

KING COUNTY AGRICULTURE COMMISSION

MEETING NOTICE

THURSDAY DECEMBER 9, 2021

6:00-8:00 P.M.

ZOOM VIDEO CALL

CALL IN:

One tap mobile: +12532158782,,83379476743#,,,,*870300#

Land line: +1 253 215 8782, Meeting ID: 833 7947 6743, Passcode: 870300

OR

LOG IN FROM A COMPUTER OR SMARTPHONE:

<https://us06web.zoom.us/j/83379476743?pwd=dXZrZk5sYjIzSzRlZUZRnlzR0Mwdz09>

MEETING AGENDA

6:00	Call to Order <ul style="list-style-type: none">For the public record, please sign in via the chat feature or announce yourself by name and whether you are a commissioner, staff or member of the publicApproval of AgendaApproval of Meeting Minutes: <i>October 14</i>	Nayab Khan, Chair
6:05	Public Comment related to a specific agenda item <i>3 minutes/person</i>	Nayab Khan
6:10	Old Business - Updates (approx. 3 min each) <ul style="list-style-type: none">Commission Details<ul style="list-style-type: none">Ag policy and eventsSelection CommitteeKing County Ag ProgramKing Conservation DistrictLocal Food InitiativeKing-Pierce Farm BureauFarm Fish Flood	<ul style="list-style-type: none">Patrice BarrentineKevin ScottRichard MartinCarrie KingMike LufkinLeann KrainickBeth Ledoux
6:30	Strategic Climate Action Plan (SCAP) <ul style="list-style-type: none">Greenhouse Gas (GHG), Power SystemsPresentationQ&A	Intro: Leann Krainick, Krainick Dairy Matt Kuharic, KC SCAP GHG Manager
6:50	New Business Officer Elections <ul style="list-style-type: none">Nomination slateNominations from the floorMotion for chair and voteMotion for vice-chair and vote	Nayab Khan, Patrice Barrentine
7:10	King County's Farmland Leasing Program <ul style="list-style-type: none">Farmland Property PortfolioFarmland ManagementHorseneck Farm 2021Horseneck Farm RFP for 2022 farmersInput from Commission	Melissa Borsting, Farmland Program Manager
7:50	General Public Comment <i>3 minutes/person</i>	Nayab Khan
7:55	Concerns of Commissioners	Nayab Khan
8:00	Adjourn	Nayab Khan

Next Meeting: January 13th, 2022



King County
Water and Land Resources Division
 Department of Natural Resources and Parks
 King Street Center
 201 South Jackson Street, Suite 5600
 Seattle, WA 98104-3855
206-477-4800 Fax 206-296-0192
 TTY Relay: 711

King County Agriculture Commission
DRAFT Meeting Minutes
Thursday, October 14, 2021 – 6:00 pm to 8:00 pm
Zoom Video Conference Call

Commissioners Present (Y/N)					
Nayab Khan, Chair	N	Andrew Ely	Y	Shelly Pasco	Y
Kevin Scott-Vandenberg, Vice-Chair	N	Lily Gottlieb-McHale	Y	Henry Wong	Y
Jessi Bloom	Y	Janet Keller	Y		
Roger Calhoun	Y	Darron Marzolf, acting Chair	Y		
Ex Officio Members Present (Y/N)					
Fereshteh Dehkordi, DLS	Y	Jordan Jobe, WSU	Y	Carrie King, KCD	Y
County Staff/Representatives Present					
Patrice Barrentine, DNRP	Beth leDoux, DNRP		Megan Moore, DNRP		
Emily Coleman, DNRP	Richard Martin, DNRP		Rick Reinlasoder, DNRP		
Guests Present					
Mark Baker	Leann Krainick, Krainick Dairy		Rosa Méndez-Perez, KCD		

Meeting Summary

- **Actions: Approvals of Agenda and September 2021 Meeting Minutes**
- **Old Business: Commission, County, and Agriculture Organization Updates**
- **New Business: Preparation for Commission Officer Elections and Selection Committee**
- **Presentations: Compost Pilot & Food Waste to Feed – Update and Strategies; New KCD Director**

Meeting called to order by acting Chair Darron Marzolf at 6:02 pm

Roll Call/Announcement of Staff & Public (Darron Marzolf)

Roll call of Commissioners and announcement of staff and public guests was done via the Zoom chat function.

ACTION: Approval of Meeting Agenda (Darron Marzolf)

Shelly Pasco motioned to accept tonight’s agenda as written. Janet Keller seconded the motion, which carried with unanimous approval.

ACTION: Approval of September 2021 Meeting Minutes (Darron Marzolf)

Shelly Pasco motioned to accept the prior meeting’s minutes as written. Henry Wong seconded the motion, which carried with unanimous approval.

Compost Pilot & Food Waste to Feed – Update and Strategies (Emily Coleman, Rick Reinlasoder)

Emily Coleman of DNRP’s Solid Waste Division (SWD) spoke to the Commission on the response to a meeting she and colleague Andy Smith held with the Commission’s committee addressing the topic of food waste and animal feed. This also included a pilot project to demonstrate the benefits of compost use to farmers.

Farm Compost Pilot: About a year ago, SWD began partnering with WLRD to reach out to small farmers from diverse backgrounds to demonstrate compost benefits to encourage its use in farming. This focus is part of the County’s Equity and Social Justice (ESJ) commitment; the program worked with the Black Farmers Collective in 2020 and other farms this year. A survey was conducted at the start of the season, and end-of-season survey results are now being compiled. The County wants to work with farmers to mitigate any concerns and barriers about compost use. They are interested in the Commission’s input on this work, and are willing to share the final report when available.

Food Waste to Livestock Feed: The County is engaging on this at the state level with Department of Ecology (DOE), through the Use Food Well Washington Plan and the Washington Organics Stakeholder Workgroup. DOE’s stance is that more foundational research is needed to find opportunities for this at the state level. Once opportunities are located, the hope is to develop more state programs around livestock feed and work with the County. Feeding people is their primary focus. It was noted Washington state law may allow opportunities for livestock feed in the future.

The Pacific Coast Collaborative’s Food Waste Reduction Workgroup is also working on this issue. They offer networking opportunities with food waste generators. Their current focus is large-scale pilot programs with major regional grocers. This helps create a network with grocers to leverage for future education opportunities for food waste generators, including how farmers can donate livestock feed.

SWD also has the Re+ Plan, which is to be launched in the next few months to reach a target of “zero waste to resources” by 2030. The focus is organics/food waste diversion. They will provide commercial and technical assistance on how to divert food waste from landfills, how farmers can donate livestock feed, and educating food waste generators. The next step would be a large grant program offered to those willing to donate food waste to feed, starting spring of next year. De-packaging of food waste is also a concern, and SWD is in the process of optimizing their transfer stations to investigate de-packaging equipment.

Patrice Barrentine recalled that the Commission brought this issue to DNR Director Christie True’s attention when they noticed nothing in the County’s Strategic Climate Action Plan (SCAP) addressed food waste to feed, and True asked SWD to work on it. Major obstacles in progress include policy, farmer education, and regulation on doing the “right thing” with waste and animals. It is proposed that, with input of a Commission committee, workshops be held next year for farmers on how to make food waste into feed for their farms. Information would cover determining whether the concept is a good fit, the pros and cons, regulations, product sources, scale, and the right connection-to-customer base. Another idea is a certificate of completion, to indicate when generators have participated in the training.

A key outcome of this work is to connect farmers with food waste opportunities through SWD and WLRD. A survey is planned for producers, to gain information on what kinds and what volume of food waste are needed for feed demands. The County is trying to build a supply chain of food waste to feed by working on the policy and education side for generators and livestock producers. County Livestock Program Specialist Rick Reinlasoder noted this process wouldn’t work for every livestock operator; there are specific species and types of receptacles needed, and other details to work through on the generator as well as the user side. Patrice Barrentine asked if the Commission needs more information to move forward on this issue.

Follow-Up Discussion Points:

- SWD needs to hear from farmers and other waste generators on what specifically will best work for them, and this information will be used to provide the best educational product for the generators.
- Different livestock species have different feed requirements, but the primary target species will likely be cattle, as they consume the most and are the bulk of livestock in King County. Their operations also have the best-suited infrastructure.
- Both farmers and grocers are being solicited to supply food waste as feed. There should be an opportunity for farmers to participate in both sides of this process, though.
- There are two tiers to this food waste rerouting: what can be brought back into the human food supply chain (such as food banks), and what can be used as animal feed.
- In terms of what it takes for a generator to “break even” in this process, that will need to be determined by the individual entity. It’s about scale, and has to be the right match.
- It was suggested that any workshops for this program include education on the permitting aspect, and for County permitting staff to be briefed so code enforcement can sort out any issues. Patrice Barrentine agreed to bring these ideas to the attention of the agriculture permitting team.
- Any Commissioners interested in being part of this work group should let Barrentine know. The hope is to have a meeting the first quarter of 2022, as well as a start on workshop coordination and running information by the agriculture permitting team.

King Conservation District – New Executive Director (Carrie King, Rosa Méndez-Perez)

Carrie King introduced Rosa Méndez-Perez, the new executive director for the King Conservation District (KCD). Méndez-Perez has a professional background in conservation and environmental justice, and finds resonance in KCD’s values in collaborating and coordinating community-based stewardship.

Public Comment – Related to Specific Agenda Item (Darron Marzolf)

There was no public comment given during this period.

Old Business – Updates

- **Commission Details/Policy & Events (Patrice Barrentine):**
 - Washington State has a new long-term care funding program, established by the state legislature. More information is available at <https://wacaresfund.wa.gov/>
 - COVID-19 vaccination pop-up locations are still available in King County.
 - King County Council (KCC) holds meetings every Tuesday at 1 pm. The proposed Commercial Property Assessed Clean Energy and Resiliency (C-PACER) program is being taken up by KCC’s Mobility and Environment Committee this month.
 - A \$20 million climate equity capital pool has been proposed, to improve climate equity for King County residents. In the proposal is a major point for farms: infrastructure to improve opportunities for BIPOC farmers to grow and harvest culturally relevant foods in King County.
 - The status of Commissioner appointments and reappointments was reviewed.
 - There is a new free online documentary this week celebrating the 50th anniversary of saving Pike Place Market from destruction.
 - The Tilth Conference is being held November 19-21 and the Washington Farm Bureau state conference is November 15-18 in Yakima.
 - WSU’s Cover Crop Field Day and No-Till Training Workshop are scheduled for October 19.
 - Fall agritourism is in full swing, with many farms offering activities.
 - The Local Food Initiative’s (LFI) latest newsletter features articles on Horseneck Farm and the Farmland Leasing Program, which is accepting proposals.
 - The USDA is launching many programs, including: an organic certification cost share program, a pandemic safety grant program, and a micro-farm crop insurance policy. It is time to register for the 2022 agriculture census, and USDA is also accepting comments on a new climate-smart agriculture and forestry partnership initiative. Any comments on this should be sent to Patrice Barrentine or Richard Martin; while the Commission normally comments on County policy, there are sometimes opportunities to comment through DNRP to outside entities.
 - Business Impact Northwest is offering free one-on-one business coaching.
- **King County Agriculture Program (Richard Martin):** The County owns and manages about 325 acres of mostly farmable land as part of its Farmland Leasing Program (FLP). There are five core farms in the program, a total of about 100 farmable acres. The current focus is on providing farmland access to new and BIPOC farmers, and providing the infrastructure to succeed on those five farms. Bee Cha is manager of the core farms, operating on a budget of \$20-30K annually. Current infrastructure needs are estimated to cost \$1 million. The agriculture program has submitted a proposal to a \$20 million County biennial fund, asking for \$1 million to meet these infrastructure needs. This proposal was packaged with the Executive’s budget, with hopes that KCC will approve. If so, the funded projects must be completed within two years. It was asked if there is a Commission committee to help with FLP. Martin replied there is a list that the County would be glad to vet through the Commission’s land committee, to look for areas to advance this work.
- **King Conservation District (Carrie King):**
 - The new Executive Director’s highest priority is filling the vacancies for: head of Human Resources, finance director, and director of stewardship. The budget is close to being finalized and recruitment will begin soon.
 - Plant sale pre-orders begin mid-November.
 - The Regional Food Systems program received 24 grant applications this year. Half are BIPOC, up from 25% last year.
 - Farm equipment rental season is winding down.
 - About 20K linear feet were successfully drained this year, double the usual target. About 8,000 feet of drainage tile were laid. Things are queuing up for next year’s field season. Anyone interesting in dredging, culvert replacement, drain tile replacement, or bridges will be put in touch with Liz Stockton.
- **Local Food Initiative (Mike Lufkin):** There was no update available.
- **King-Pierce Farm Bureau (Leann Krainick):**
 - All present are encouraged to return their ballots for the coming election.
 - The My Fork Supports Farms campaign continues. Anyone with ideas should send them to Leann Krainick.
 - A coming Town Hall meeting is open to all state FB members, with a conversation on the “Rural-Urban Divide.”

- **WSU Extension (Jordan Jobe):**
 - Next Tuesday is WSU’s Cover Crop Day.
 - Pierce County’s agriculture committee is hosting a round table conference call on October 21 about the state DOE’s plastic bag ban, with a DOE representative present.
 - The AgAID institute website is now live.
- **Meat Processing Update (Patrice Barrentine, Darron Marzolf):** The planned USDA/WSDA meat processing facility is close to launch, with paperwork mostly in order to acquire the new location. Darron Marzolf has been awarded a USDA grant to update the facility, a former horse arena, to pass USDA inspector standards. This includes having the potential to “overnight” animals that need to be dropped off for slaughter, as well as concrete added to handle the blood, which is treated as a hazardous substance. PCC has signed a letter of intent to work with the new facility, which will be a benefit to small farms; unsold animals from small farmers can now come into this process and local meats can be routed into the food stream. The hope is to be up and running in less than six months. Marzolf is also hosting the planned USDA mobile slaughter facility and converting his custom meat shop to USDA. This will be the closest such facility to the Seattle area.
- **Farm Fish Flood 2.0 (Beth leDoux):** The FFF Implementation Oversight Committee (IOC) has worked to develop progress milestones, action items that need to be accelerated. The top three priorities for the farm caucus to uphold the FFF agreement include: having a reliable stream of funding, improving drainage (the caucus’s top priority), and work on alluvial fans. The fish caucus wants habitat projects to move at a steady pace, and the flood caucus is interested in public safety and improving flood resiliency of roads. Patrice Barrentine is working on the agriculture strategic plan for the Snoqualmie Valley; a report will be available for review in the first quarter of 2022.

New Business: Preparation for Officer Elections, Forming Selection Committee (Patrice Barrentine)

Commission officer elections, along with formation of a selection committee to nominate new Commissioners, are slated for next month. Six Commission seats will open at the end of February 2022, including that of current chair Nayab Khan, who may not renew.

Patrice Barrentine reviewed the nomination process and explained the reporting hierarchy for the Commission, that they communicate to the Executive and KCC through DNRP. Nominations were requested, but none were volunteered. Barrentine will reach out to Commissioners before next Commission meeting to gauge interest and confirm nominees.

Barrentine also reviewed the current list of Commission committees. During the pandemic, committee work has paused, but will be restarted in 2022. The make-up and duties of the selection committee were also reviewed; Jessi Bloom volunteered to serve on this committee.

Public Comment – General (Darron Marzolf)

There was no public comment given during this period.

Concerns of Commissioners (Darron Marzolf)

There were no concerns raised during this time.

Meeting adjourned at 7:58 pm

Next Meeting(s)

November 4, 2021, 6:00 pm to 8:00 pm (Zoom Video Conference Call) – **CANCELED due to weather**

December 9, 2021, 6:00 pm to 8:00 pm (Zoom Video Conference Call)



Legislation, Conferences, Events and Key Dates

REGARDING KING COUNTY
AGRICULTURE

NOVEMBER/DECEMBER 2021



King County Events and Public Meetings



The King County Flood Control District will hold two public scoping meetings on January 6, 2022 (2:30 – 4 PM and 6 – 7:30 PM).

- <https://www.kingcounty.gov/about/news/events.aspx>
- Covid-19 Vaccination Pop-ups around the County
 - <https://kingcounty.gov/depts/health/covid-19/vaccine/schedule.aspx>
 - Veteran's Day Holiday – observed Nov 11
 - Thanksgiving Holiday - Nov 25 & 26
 - Christmas Day Observed - Dec 24
 - New Year's Day Observed – Dec 31
- Council Meetings every Tuesday, except Nov 30

Mobility and Environment Committee

Proposed Ordinance No. [2021-0301](#)

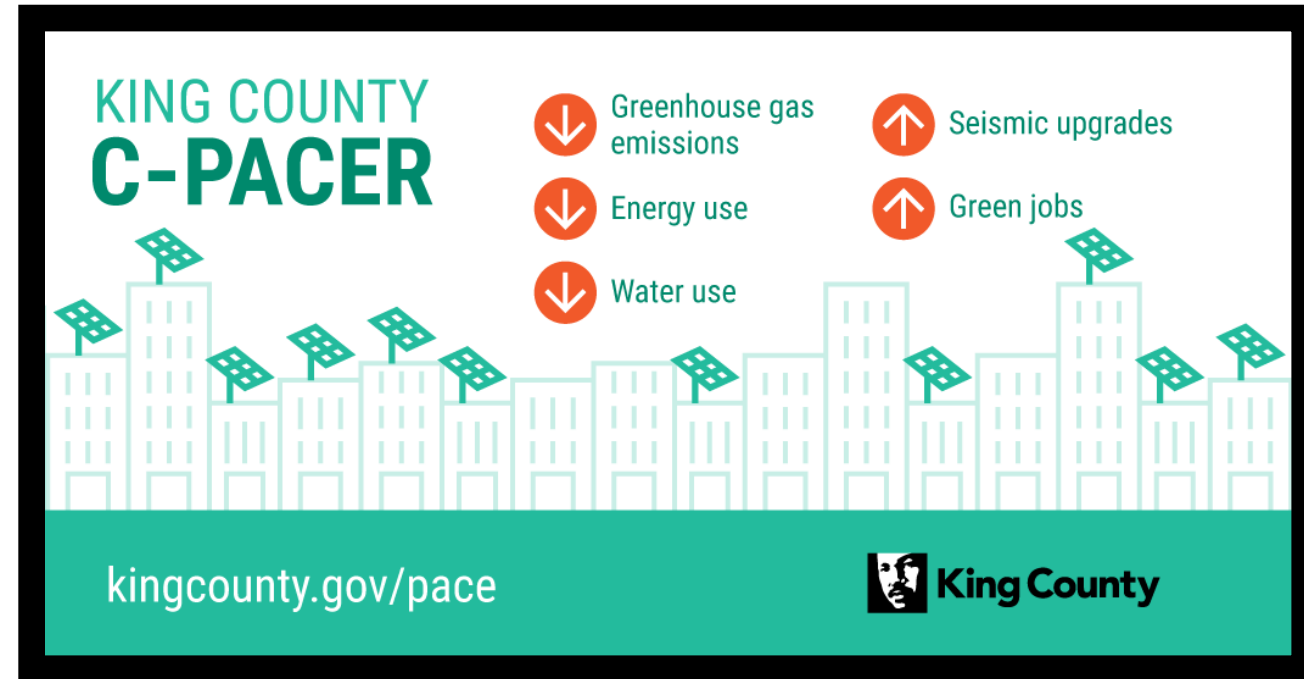
October 27th


Action: **Passed Out of Committee Without a Recommendation**

November 16

Action: **Passed as Amended**

AN ORDINANCE establishing a commercial property assessed clean energy and resiliency financing program; amending Ordinance 4461, Section 2, as amended, and K.C.C. 20.22.040 and Ordinance 4461, Section 2, as amended, and K.C.C. 20.22.040 and adding a new chapter to K.C.C Title 18.





New \$20
Million Climate
Equity Capital
Pool Proposed

On September 30, Executive Constantine transmitted his \$617 million mid-biennial proposed supplemental budget, which includes **\$20 million of Climate Equity bond funds for projects to support frontline communities disproportionately affected by climate change and increase opportunities for those communities to benefit from emissions reductions and energy efficiency.** Through a six-month process, the Climate Equity Community Task Force crafted the goals of this Climate Equity funding, developed criteria for project proposals, and, ultimately, selected project proposals for the mid-biennial budget process. The projects include:

- White Center Community Hub funding, which will have a significant solar array and provide holistic support to frontline communities disproportionately affected by climate change.
- Grants to enhance green building components of affordable housing projects.
- Parks solar lighting to improve safety, walkability, and gathering spaces in underinvested areas.
- Environmental investments for income-qualified homes, including home energy retrofits and onsite sewage system repairs and replacements.
- ADA pedestrian improvements in White Center to boost walkability and transit access.
- **Infrastructure to improve opportunities for BIPOC farmers to grow and harvest culturally relevant foods in King County.**

Please note, all projects are subject to Council approval, which is expected in late November.



Teufel Nursery and Lakeside Community during January 1996 flooding.

*The King County
Flood Control District
will hold two public
scoping meetings on
January 6, 2022
(2:30 – 4 PM and 6 –
7:30 PM).*



LOWER GREEN RIVER CORRIDOR FLOOD HAZARD MANAGEMENT PLAN

**Programmatic Environmental Impact
Statement Scoping Fact Sheet**

December 2021

FLOOD RISK IS REAL

The Lower Green River is at risk of severe flooding. Floods are dangerous and destructive. They threaten our safety, block the movement of people and goods, harm the environment, and cause severe damage.

The King County Flood Control District (the District) protects people, property, and communities from the harmful impacts of floods. The District wants to make sure the Lower Green River Corridor is a safe place to live, fish, work, farm, and play for generations to come.

The District is developing a Flood Hazard Management Plan to protect the Lower Green River Valley. The Valley includes:

-  22,000 people living in the Valley and floodplain
-  Over 100,000 jobs
-  2nd largest industrial park on the West Coast and 3rd largest warehouse and distribution center in the country
-  Over \$37 million in income from businesses of all sizes, including companies like Boeing, Starbucks, REI, IKEA, and Blue Origin
-  Major transportation routes and public facilities, including hospitals and schools
-  Threatened salmon and other aquatic animals
-  Farming
-  Parks, trails, and natural areas



Near the Holiday Kennel revetment during December 2015 flooding.

FLOOD FACTS



- Flooding is the state's most expensive natural disaster; the costs of flooding exceed all other natural dangers.
- Even though flooding usually happens in the winter, King County rivers can flood almost any time of year.
- As the climate changes, flooding will be more common.

Source: King County & Washington State Department of Ecology

PROTECTION TAKES PLANNING

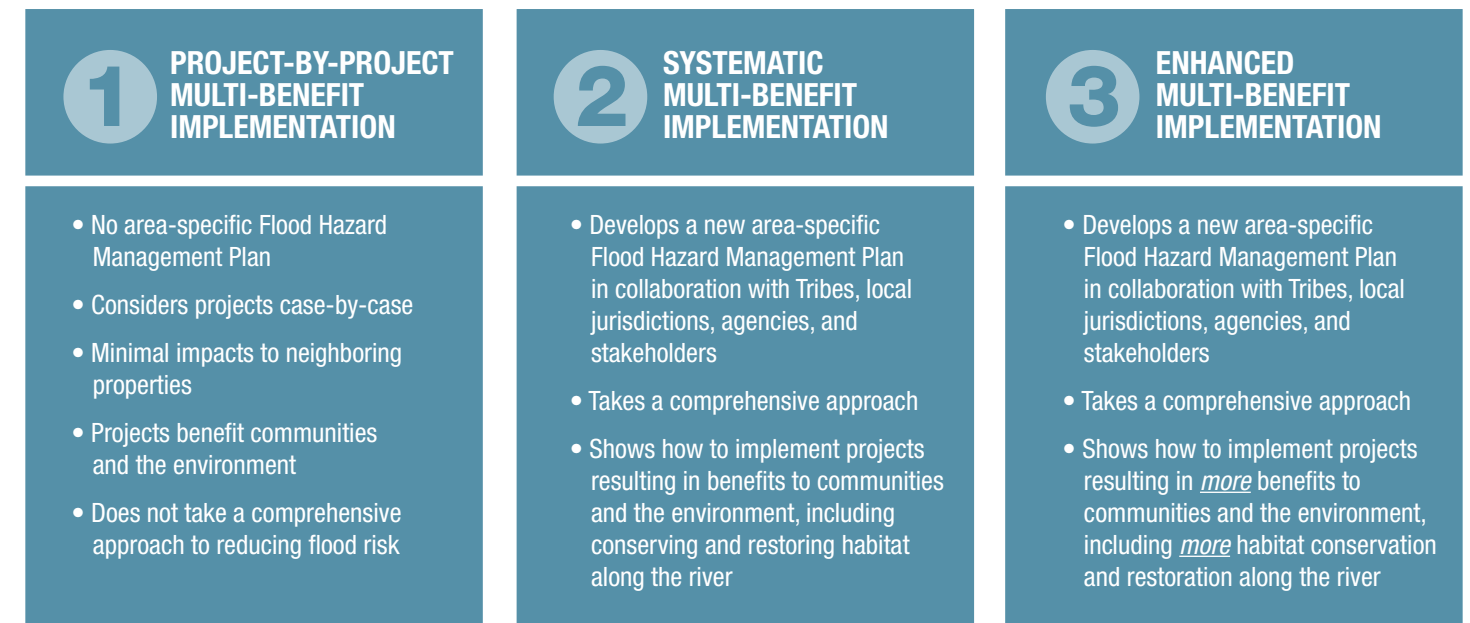
The District is developing a Lower Green River Corridor Flood Hazard Management Plan. The plan will guide future investments to reduce flooding.

A study called a **Programmatic Environmental Impact Statement (PEIS)** is underway. This study will analyze ways to provide flood protection and meet other important objectives, including equity, habitat and salmon recovery, community, agriculture, development, water quality, and recreation.

WE NEED TO HEAR FROM YOU

You can help by providing feedback on three alternatives for the draft PEIS. Each alternative takes a different approach to managing flood risk. And each will describe environmental impacts and ways to mitigate them.

LOWER GREEN RIVER CORRIDOR FLOOD HAZARD MANAGEMENT PLAN PEIS ALTERNATIVES



2019

2020

2021

2022

INITIAL SCOPING

REVISED ALTERNATIVES DEVELOPED

NEW SCOPING PERIOD

PREPARE DRAFT PEIS

FALL 2022

- Comments on the Draft PEIS are addressed and the evaluation is refined as warranted
- Final PEIS issued

DRAFT PEIS REVIEW

FINAL PEIS

NOVEMBER 2018-APRIL 2019

- PEIS begins
- Initial scoping
- Stakeholders and public provide comments on initial alternatives

MAY 2019-OCTOBER 2021

- District sets direction on alternatives and prioritizes multi-benefit projects
- Prepare for additional scoping period

DECEMBER 2021-JANUARY 2022

- Public provides comments on the revised alternatives and the environmental issues that should be part of the evaluation

WINTER-SPRING 2022

- Revised alternatives may be refined based on scoping comments
- Analysis to determine the potential impacts of each alternative

SUMMER 2022

- Draft PEIS released for public review
- Public provides comments on the analysis conducted on revised alternatives

PROJECT STUDY AREA

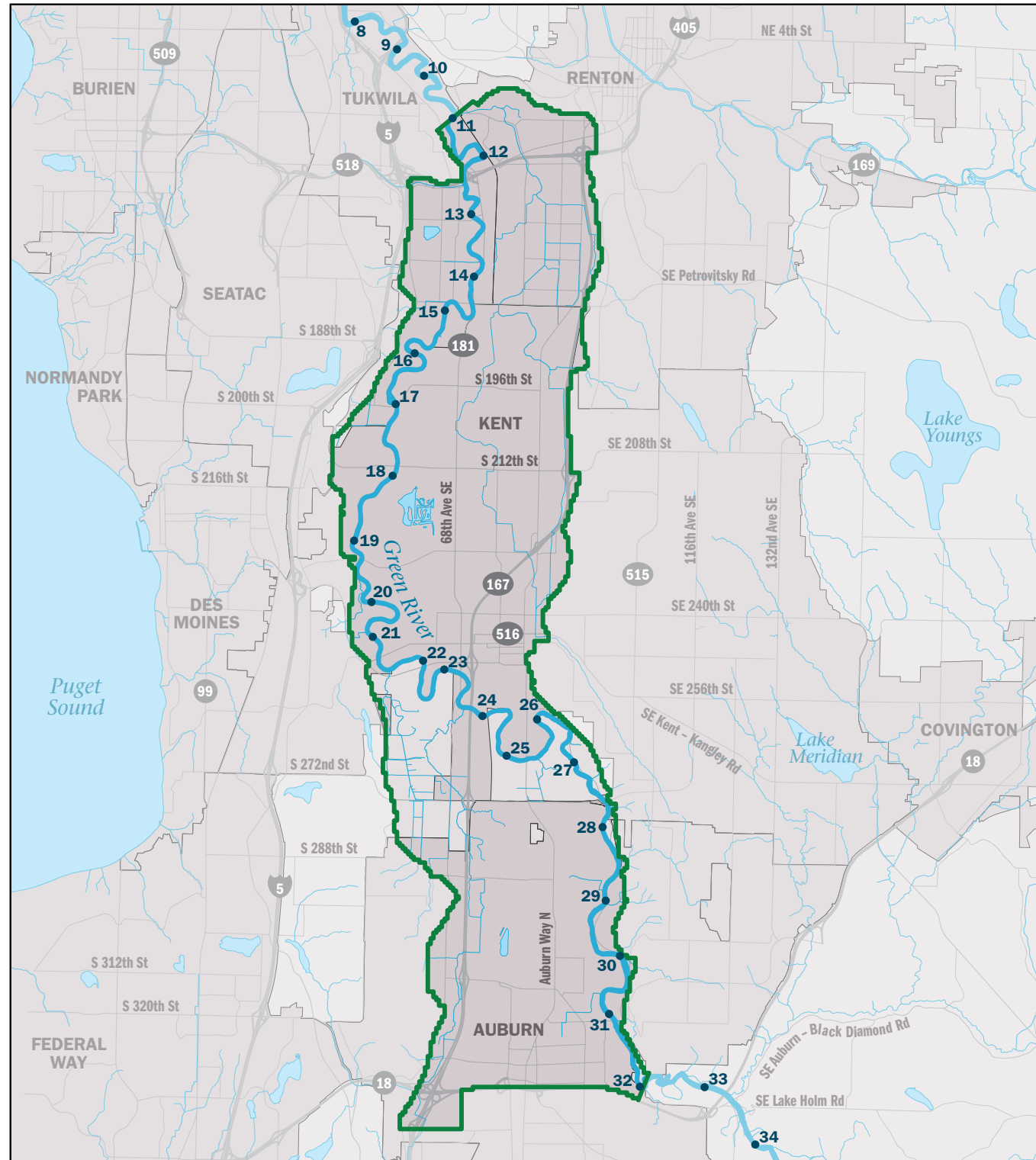
The study area addresses approximately 21 miles of the Green River through the cities of Auburn, Kent, Renton, and Tukwila, and unincorporated King County.



Near Dykstra Park during February 2020 flooding.



Downey Farm and Signature Pointe Development.

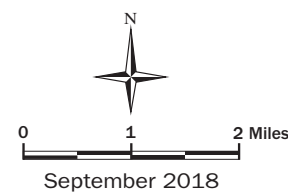


Lower Green River Corridor Flood Hazard Management Plan and Programmatic Environmental Impact Statement

Study Area

Study Area
 Green River

30 River Mile
 City Area



The use of the information in this map is subject to the terms and conditions found at: www.kingcounty.gov/services/gis/Maps/terms-of-use.aspx. Your access and use is conditioned on your acceptance of these terms and conditions.
 Data: King County GIS File: 1809_9290w_green_ctrl_zn_map.ai



LET US KNOW WHAT YOU THINK

Your input will help shape flood protection planning. Please share your thoughts!

- **Email:** lowergreensepa@kingcounty.gov
- **Mail:** King County Flood Control District
 Attn: Michelle Clark, SEPA Responsible Official
 516 Third Avenue, Room 1200
 Seattle, WA 98104
- **Attend an upcoming meeting:**
 Go to www.LowerGreenSEPA.org for more about future opportunities.

Informacion disponible en espanol; por favor llame al (206) 349-6361.

索取中國人版本的可用資訊; 請撥打 (206) 349-6361.

Để xem thông tin bằng Tiếng Việt, xin gọi (206) 349-6361.

Имеется перевод этой информации на РУССКИЙ; обращайтесь по телефону (206) 349-6361.

Macluumaadka waxaa lagu heli karaa somaliyeed; Fadlan la hadal (206) 349-6361.

한국어로 정보를 확인할 수 있습니다. (206) 349-6361 로 전화하십시오.

Інформація доступна українською мовою. Зверніться за номером (206) 349-6361.

Available ang impormasyon sa Tagalog; pakitawagan ang (206) 349-6361.

Council Legislation
regarding
Commissioner
Appointments

King County Council

November 2, 2021

Confirmed to date

Reappointments

Motion No. [2021-0293](#): **Darron Marzolf**

Motion No. [2021-0294](#): **Roger Calhoon**

Motion No. [2021-0292](#): **Kevin Scott-Vanderberge**

Agriculture Commissioner *Reappointments*

Proposed Motion No. [2021-0292](#)

A MOTION confirming the executive's reappointment of **Kevin Scott-Vanderberge**, who resides in council district two, to the King County agriculture commission.

Sponsors: Mr. Zahilay

Nov 2: Consent Agenda; **Passed**

Proposed Motion No. [2021-0292](#)

A MOTION confirming the executive's reappointment of **Lily Gottlieb-McHale**, who resides in council district nine, to the King County agriculture commission.

No Action Yet

Agriculture Commissioners *New Appointees*

Council Legislation
regarding
Commissioner
Appointments

Confirmed to Date:

Andrew Ely
Jessi Bloom
Janet Keller

Motion No. [2021-0299](#)

A MOTION confirming the executive's appointment of **Jessica Bloom**, who resides in council district three, to the King County agriculture commission.

Sponsors: Kathy Lambert

Sept 7: Introduced and Referred to Local Services Committee

Oct 26: Local Services Vote: Do Pass Consent

Nov 16: Metropolitan King County Council: Passed

Motion No. [2021-0300](#)

A MOTION confirming the executive's appointment of **Janet Keller**, who resides in council district three, to the King County agriculture commission.

Sponsors: Kathy Lambert

Oct 12: Introduced and Referred to Local Services Committee

Oct 26: Local Services Committee: Do Pass Consent

Nov 16: Metropolitan King County Council: Passed

Council Legislation
regarding
Commissioner
Appointments

Agriculture Commissioners *New Appointees*

Motion No. A MOTION confirming the executive's appointment of **Henry Wong**, who resides in council district two, to the King County agriculture commission.

Sponsors: Girmay Zahilay

Nov 2: Introduced and Referred to Local Services Committee

Nov 30: Local Services Vote: Do Pass Consent

Motion No. [2021-0297](#)

A MOTION confirming the executive's appointment of **Shelley Pasco**, who resides in council district five, to the King County agriculture commission.

Sponsors: Dave Upthegrove

Aug 17: Introduced and Referred to Local Services Committee

Nov 30: Local Services Vote: Do Pass Consent



Washington state Senate approves hybrid model for upcoming legislative session

The Legislature will convene for a Regular Session on January 10, 2022.

Rosella Mosby
President



Congratulations Rosella!

NEWLY ELECTED WA STATE FARM BUREAU PRESIDENT
GREEN RIVER APD FARMER, MOSBY FARMS
FORMER KC AG COMMISSIONER
1ST WOMAN PRESIDENT OF WSFB



FARMING ON THE URBAN EDGE

VIRTUAL CONFERENCE
WINTER 21 - SPRING 22

**WSU Launches New “Farming
on the Urban Edge” a 5-
Part Virtual Conference
starting November 12th, 2021**

*Videos, Events, Resources and Networking
for Farmers, Policy-makers, Educators, and
Food Systems Stakeholders on the urban
edge*

Events

WSU FARMING ON THE EDGE
[HTTPS://WWW.PERIURBANAGRICULTURE.ORG/CONFERENCESESSIONS](https://www.periurbanagriculture.org/conferencesessions)

LOCAL FOOD

Initiative News



KING COUNTY Department of Natural Resources and Parks

[Pacific Coast Harvest and Farmstand Local Foods: Sending out and scaling up local food](#)

[Pumpkin patches and other seasonal activities](#)

[Sovereignty Farm's Victoria Plumage reflects on the project's first year](#)



Sign up
for our
newsletter

USDA



Updates from the USDA

[Register to be counted in the 2022 Census of Agriculture](#): Conducted by the USDA once every five years, this census looks at land use and ownership, operator characteristics, production practices, income, and expenditures.

USDA Farm Service Agency Webinar: Supporting Organic and Transitioning Farmers through New Cost-Share and Conservation Programs

- **[Organic and Transitional Education and Certification Program \(OTECP\)](#),**
- **[Organic Certification Cost Share Program \(OCCSP\)](#),** and
- **[Conservation Reserve Program \(CRP\) Organic Buffers](#).**

When: Thursday, Nov. 18, 202, 3-4 p.m. ET

Description: support for organic and transitioning farmers through climate and environmentally-friendly farming practices.

[Register for the Webinar](#)

King County DNRP WLRD Events



Coming up in November

- 11/12 – WLRD and DNRP staff will take the King County Executive on a tour of open spaces permanently protected through our Land Conservation Initiative and projects completed by the Fish Passage Restoration Program. (Learn more about projects like these in Tracks.)
- 11/16 – Public meeting about the new draft study of the Greenwater River's channel migration zone.
- 11/30 – Lones Levee Setback and Floodplain Restoration Project completion celebration

October ICYMI...

- 10/1 – King County leaders urge flood preparedness now as forecast for 'La Nina' winter hints at wetter, cooler weather - King County
- 10/4 – It's Salmon Viewing Season: Here's Where To Go In King County | Sammamish, WA Patch
- 10/14 – 📺 SR 169 Flood Risk Reduction Project video [Featuring Evan Lewis]
- 10/14 – Closure of State Route 169 in Maple Valley, Friday, Oct. 15 at 9 p.m. to Monday, Oct. 18 at 5 a.m., for construction to reduce flood risk - King County
- 10/17 – State Route 169 in Maple Valley closure extended through Oct. 20 following discovery of remnant bridge at project site - King County
- 10/20 – State Route 169 to begin reopening tonight, Oct. 20, as work wraps up on critical flood risk reduction project - King County
- 10/21 – Can 'bug seeding' improve the health of local creeks? | Encyclopedia of Puget Sound (eopugetsound.org) [Featuring Kate McNeale, Beth Sosik, Emily Schwabe, Ella Wagner, Amani Moyer-Ali, Morgan Smith and Nathan Rutledge-Gorman]
- 10/28 – King County opens Flood Warning Center to monitor rising flows as rain brings minor flood threat to Snoqualmie River - King County
- 10/28 -- King County Flood Warning Center issues Phase 2 flood alert for Tolt River with minor flooding possible from heavy rain - King County
- 10/28 -- King County Flood Warning Center issues Phase 3 flood alerts for Snoqualmie, Tolt rivers as heavy rain pushes rivers higher - King County
- 10/29 – WA fish researchers use tiny sensors and other tech to save salmon | Crosscut [Featuring Chris Gregersen and Matt Goehring]
- 10/29 – Northwest Now (kbtv.org) – Making the Connections: Stormwater threatens Puget Sound
- Puget Sound Marine Waters 2020 Overview

Ag Commission Planning for 2021

Q1

Q2

Q3

Q4

Recycled Water Project in Sammamish APD

KC DNRP and Commission re: Social Media and Ag in KC

ECY's Watershed Restoration Enhancement Committee (WREC) planning process results for WRIAs 8 and 9: Protecting Irrigation Water

County Assessor Current Use Program

Emergency Preparation for Farms; wildfire evac: fairgrounds; evacuation plans: Emergency Mgmt (Kimmy Devaney)

FFF Ag Strategic Plan Update

Compost Pilot and Food Waste to Feed Update and Strategies

Meeting new KCD Executive Director

Starting Selection Committee and preparing for Electing Officers

Selection Committee

Wildlife and Livestock: Predators

Revising KC Farmland Leasing Program

Surface Water Design and Stormwater Pollution Prevention Manual

SCAP: Food Waste to Feed; SWM fees

Farm Practices Illustrated: Farmworker Housing

X

Election of Officers

KC Farmland Leasing Program: Progress and Input

Land: Farm Real Estate and Covid

X

Welcoming new Commissioners

X

Farmland Preservation Program Update

40th Anniversary of Farmland Preservation Program

Pulse of the KC Ag Sector

Ag Commission (Draft) Planning for 2022

Q1

Q2

Q3

Q4

Farming and Wildlife: Beavers
Planning for 2022

Working Farmland Partnership

Ag Commission Communications
Plan

Farm Fish Flood Agriculture Land Resource Strategic
Plan: Update and Feedback

Farm Practices Illustrated

X

KC Compost, Trial Results, Field
Trip?

Update on Recycled Water Project in Sammamish
APD; Research and Trial Results from UW and WSU

X

Farming and Wildlife: Waterfowl

X

King County Agriculture Commission

2022 Meeting Schedule

Date	Time	Location
January 13	6-8 pm	Via Zoom
February 10	6-8 pm	Via Zoom
March 10	6-8 pm	Via Zoom
April 14	6-8 pm	Via Zoom
May 12	6-8 pm	Via Zoom
June	none	
July 14	6-8 pm	Via Zoom
August	none	
September 8	6-8 pm	Via Zoom
October 13	6-8 pm	Via Zoom
November 10	6-8 pm	Via Zoom
December	none	

Selection Committee (Ad Hoc)

- ◇ Reviews needs of commission membership per charter legislation and adopts commission membership priorities for each recruitment
- ◇ Generates outreach list of organizations and individuals
- ◇ Reviews applications
- ◇ Conducts interviews, as needed
- ◇ Makes recommendation of nominees to DNRP
- ◇ Reports progress to Commission
- ◇ Staff liaison coordinates all elements for committee

◇ Kevin Scott

◇ Jessi Bloom

◇ Janet Keller

Timeline

01

AUGUST-OCTOBER
RECRUITMENT

02

NOVEMBER
APPLICATIONS DUE
15TH

COMMITTEE REVIEWS
APPLICATIONS

03

DECEMBER/JANUARY
MAKE
RECOMMENDATION
TO DNRP

Recruitment 2022 Priorities

- ◇ APD or Area
 - ◇ Vashon
 - ◇ Snoqualmie
- ◇ Equity and Social Justice
- ◇ Policy/Regulatory/Land Use experience
- ◇ Farmers Market experience
- ◇ Farm, Fish, Flood experience

Selection Committee

- ◆ 8 highly competitive applications received for five seats
- ◆ Committee reviewed applications and made recommendation of five applicants that best fit this recruitment priority ; Asked Executive Committee to review and support recommendation
- ◆ Executive Committee agreed to support recommendation 12/2
- ◆ Recommendation will be transmitted to DNRP leadership review in December/early January

◆ Kevin Scott

◆ Jessi Bloom

◆ Janet Keller



Preparing for Officer Elections

Policies and Procedures

Officer Nomination Slate for 2022

◆Chair: Kevin Scott

◆Vice Chair: Darron Marzolf

◆Are there any additional nominations from the floor?