

KING COUNTY AGRICULTURE COMMISSION

MEETING NOTICE

THURSDAY, JANUARY 14, 2021

6:00-8:00 P.M.

ZOOM VIDEO CALL

CALL IN:

One tap mobile: +12532158782,,94414136150#,,,,*134352#

Land line: +1 253 215 8782 US, Meeting ID: 944 1413 6150, Passcode: 134352

OR

LOG IN FROM A COMPUTER OR SMARTPHONE:

<https://zoom.us/j/94414136150?pwd=NS9xVGcrWk5TRTJzN1VOcEJURFBtZz09>

MEETING AGENDA

6:00	Call to Order <ul style="list-style-type: none">• Roll call of commissioners• Announcement of staff and public for the record (please sign in to chat feature)• Approval of Agenda• Approval of November and December minutes	Nayab Khan, Chair
6:05	Old Business - Updates (approx. 3 min each) <ul style="list-style-type: none">• Commission Details -SCAP letter and response, selection committee<ul style="list-style-type: none">◦ Upcoming events• KC Ag Program• CARES Act funding for Farm Businesses• Farm Bureau• LCI• King Conservation District• Local Food Initiative	<ul style="list-style-type: none">• Patrice Barrentine• Richard Martin• Richard, Mike, Patrice• Leann Krainick• Leann Krainick• Carrie King• Mike Lufkin
6:25	Public Comment related to a specific agenda item <i>3 minutes/person</i>	Nayab Khan
6:30	Commission 2020 Year in Review and Topics for the year	Patrice Barrentine
6:40	Renew relationship with your Councilmember	Kevin Scott
6:45	New Business Recycled Water Farm Trial, Farmer Education and Consumer Research <ul style="list-style-type: none">• Q&A/Discussion	Nicole Gutierrez, and Jason Hatch WA Water Trust
7:20	Social Media Promotions of King County Agriculture <ul style="list-style-type: none">• Presentation• Q&A• Discussion	Saffa Bardaro, Communications Manager, DNRP WLRD
7:50	General Public Comment <i>3 minutes/person</i>	Nayab Khan
7:55	Concerns of Commissioners	Nayab Khan
8:00	Adjourn	Nayab Khan

Next Meeting: February 11

**King County****Water and Land Resources Division**

Department of Natural Resources and Parks

King Street Center

201 South Jackson Street, Suite 600

Seattle, WA 98104-3855

206-477-4800 Fax 206-296-0192

TTY Relay: 711

King County Agriculture Commission
DRAFT Meeting Minutes
Thursday, November 12, 2020 – 6:00 pm to 8:00 pm
Zoom Video Conference Call

Commissioners Present					
Nayab Khan, Chair	Y	Sarah Collier	Y	Darron Marzolf	Y
Kevin Scott-Vanderberge, Vice-Chair	Y	Lily Gottlieb-McHale	Y	Paul Pink	N
Roger Calhoon	Y	Leann Krainick	Y		
Ex Officio Members Present					
Fereshteh Dehkordi, DLS	N	Kevin Wright, WSU	Y		
County Staff/Representatives Present					
Patrice Barrentine, DNRP	Megan Moore, DNRP				
Richard Martin, DNRP	Jackie White, KCC Staff (Lambert)				
Guests Present					
Carrie King, KCD					

Action Summary

- **Actions: Approvals of Meeting Agenda; October 2020 Meeting Minutes**
- **Old Business: Commission, County, and Organization Updates**
- **Discussion/Action: 2020 Strategic Climate Action Plan & Vote on Potential KCC Letter**
- **Discussion/Action: Election of 2021 Commission Officers**

Meeting called to order by chair Nayab Khan at 6:05 pm

Roll Call/Announcement of Staff & Public (Nayab Khan)

Roll call of Commissioners and announcement of staff and public guests was done via Zoom chat function.

ACTION: Approval of Meeting Agenda (Nayab Khan)

Sarah Collier motioned to approve today's agenda as is. Kevin Scott-Vanderberge seconded the motion, which carried unanimously.

ACTION: Approval of October 2020 Meeting Minutes (Nayab Khan)

Leann Krainick motioned to approve the October meeting minutes as is. Kevin Scott-Vanderberge seconded the motion, which carried unanimously.

Old Business – Updates

- **Commission Details (Patrice Barrentine):**
 - Today is Sarah Collier's last meeting as a Commissioner, as she is moving out-of-county. Ms. Barrentine thanked Ms. Collier for her service. Ms. Collier said while she is sad to leave, she is happy to continue serving the Commission in any capacity she can.
 - Three candidates are to be interviewed before names can be put forward to fill Commission seats. Ms. Barrentine hopes to have this done by the end of the year.
 - It was noted that with the loss of Ms. Collier, four Commissioners will be a quorum, and Commissioners should be careful to avoid violation of public meeting laws and policies if gathering. Ms. Barrentine also advised Commissioners to email her, and not directly email other Commissioners.
- **Upcoming Public Meetings Involving King County Agriculture (Patrice Barrentine):**

It was agreed in Commission executive committee meetings to do a monthly highlight of local agriculture events. Ms. Barrentine listed several such recent and upcoming events:

- CARES Act Funding Deadline: The deadline for applications is November 15. The limit for per-farm business funding is now \$25K.
- WA Farm Bureau Centennial Annual Conference: This will be held virtually via Zoom conference call on November 17. Farm Bureau membership is not required to attend.
- Tilth Conference: This was November 9-10, a virtual event with much of it recorded. King County was a sponsor with the Local Food Finder.
- Fall City Floodplain Restoration Project Public Meeting: This was held virtually via Zoom webinar on October 28, and many of the resources are online on the project's webpage.

It was suggested that Rural Forest Commission meetings, and perhaps those of other County commissions, should also be highlighted in these updates if any are doing work relevant to Commission issues.

- **King County Agriculture Program (Richard Martin):**

- Green Where We Work: About half of DNR's staff now work from home permanently. Mr. Martin said while this is challenging in some ways, it distributes agriculture team staff around the County more effectively than when centralized out of King Street Center in Seattle.
- Water Needs Assessment: A contract is in the works with a consultant to conduct a countywide water needs assessment. This will be a one-year project, with preliminary results expected about this time next year. A goal is to fill gaps in areas where it is more difficult to secure water for farmers.
- County Agriculture Lands: Solid management plans are being developed for each property. Also underway is an overall management plan for the agriculture leasing program. The intent is to clarify why the County owns farmlands and what is to be done with them; Commission guidance is sought on this.
- Fish Farm Flood 2.0: FFF is now heading into its third year. The next Implementation Oversight Committee meeting will be held in December via Zoom virtual conference call and will focus on where FFF is to go in the coming years. Patrice Barrentine can provide more information.

- **CARES Act Funding (Richard Martin, Patrice Barrentine):**

- Farm Businesses: There is about \$500K available in funding, and it is expected the County will be able to fully reimburse about 80% of applicants' expenses. The application deadline was extended to November 15 to include farmers with fall seasonal business such as pumpkin patches. There is a later December 1 deadline only for Christmas tree farms. There is still plenty of room for more applications.
- Farmers Markets: 31 of 41 farmers markets in King County opened this year, with 26 applying for CARES funds. Two markets have been successfully paid so far, with several more in process. Progress is on track for all applicants to be paid by the end of the year. Since some leftover funds are expected, the program will likely extend to other markets that did not open this year but still incurred COVID-related expenses. Total funding for the program is \$410K. Ms. Barrentine thanked the markets and the WA State Farmers Market Association for their work in this process.
- Farm-to-Food Banks and Senior Centers: This part is nearly finished and has met great demand and success.
- E-Commerce: This has focused on the Hmong community but is available to farmers throughout King County.

- **King Conservation District (Lily Gottlieb-McHale, Kevin Scott-Vanderberge):**

- Mr. Scott-Vanderberge attended the most recent KCD Advisory Committee meeting in place of Commission representative Paul Pink. The meeting covered introductions and reviewed numbers for the past five years of KCD work; KCD has done well in achieving their goals. They have many more volunteers as well, especially recently. Mr. Scott-Vanderberge has reached out to KCD to obtain the minutes for the meeting and will also reach out to Ms. Gottlieb-McHale and Mr. Pink. Patrice Barrentine offered to contact Dierdre with KCD to ensure all three Commissioners are added to KCD's email list.
- The Commission welcomed Carrie King, who manages farm services programs for KCD. Ms. King has been with KCD for two years.

- **Farm Bureau (Leann Krainick):**

- Last month, Ms. Krainick was elected to the board of the King-Pierce Farm Bureau. She sits in the slot vacated by the recent passing of Dennis West. Her focus will largely be legislative and policy issues. She also co-chairs the "I Eat, I Vote" program, also known by the tag line "My Fork Supports Farms." This program is a non-partisan look at how legislative policy affects agriculture.
- The WA State Supreme Court ruled 5-4 last Wednesday that immediately, dairy farms must pay overtime to all employees working more than 40 hours weekly. Pending ruling in the next 30 days is a further provision to allow these employees to sue for up to three years of back wages. Ms. Krainick says this will likely affect all agriculture in the state and put a lot of dairy farms out of business. She believes the state will be placed at a

financial disadvantage. Her own business will see a 20% increase in payroll costs. She expects employees will be relegated to 40-hour weeks, which is a cut for many of them. She further said there is no appeal to this ruling, and it has been 30 years since the legislature overturned a state Supreme Court ruling. She encouraged all farmers to evaluate their business plans just in case and promised to continue following the issue. Farm Bureau has more information on their website.

- **Land Conservation Initiative (Sarah Collier):** There was no information to report.
- **Local Food Initiative (Richard Martin)**
 - Mike Lufkin and his team are close to completing their food feasibility study, which will explore opportunities to increase availability of local food infrastructure. The report should be posted on the LFI website by next week, as well as a summary in the next LFI newsletter. Patrice Barrentine can send out a link to the report.
 - The Food and Farm Data Center, part of FarmKingCounty.org, has been updated to include more information on individual farm demographics.
 - The KCD Regional Food Systems Grant program is accepting applications through November 23.

Public Comment – Related to Specific Agenda Item (Nayab Khan)

There was no public comment given during this period.

DISCUSSION/ACTION: 2020 Strategic Climate Action Plan (SCAP) & Possible KCC Letter (Richard Martin)

- **Presentation**

Mr. Martin reviewed the County's 2020 draft SCAP, now at King County Council (KCC) for review, and its potential implications for agriculture. The 2020 SCAP update guides the County's work related to climate policy and how it operates. It builds on the 2015 plan and incorporates new data and community input. KCC will hold hearings to consider the plan for adoption in late 2020 to early 2021.

The Climate Impacts Group at the University of Washington projects that by 2080, the state of Washington will see higher annual temperatures with more days above 90 degrees Fahrenheit, less snowpack but heavier winter precipitation, with higher stream flows in winter and lower flows in summer. Crops and livestock will be affected by the increasing temperatures and water stress, availability of irrigation water, rising carbon dioxide levels in the atmosphere, and changing pressures from pests, weeds, and pathogens. However, the overall vulnerability of Washington's agriculture sector is expected to be "low to moderate" compared to other regions of the country.

Mr. Martin listed guiding principles for the SCAP, which include but are not limited to: acting with urgency and intention; leading with racial justice/equity; using and developing best available science; responding to community needs; and stakeholder engagement. Engagement strategies for agriculture include but are not limited to: enhancing access to local food; preserving farmland; supporting management practices with environmental and agricultural benefits; and maintaining a strong local food production system to buffer climate challenges in southern regions.

The SCAP consists of three sections:

- Reduce Greenhouse Gas (GHG) Emissions: The goals are for 50% reduction by 2030, and 80% reduction by 2050. King County produced almost 20 million metric tons of GHG emissions in 2017. While agriculture is not called out as a major source of emissions, it can still contribute. There are several strategies listed in the plan that are relevant to agriculture:
 - GHG Section 6.1 is to implement the Land Conservation Initiative.
 - GHG 6.2 is to provide forestry- and agriculture-related technical assistance/incentives to landowners to encourage sustainable practices.
 - GHG 6.3 is to assess, prioritize, and plan projects to maximize carbon sequestration potential of County owned lands.
- Sustainable and Resilient Frontline Communities: This involves working with communities to provide food, and provide access to farmland for these communities.
- Preparing for Climate Change: Several strategies here are also relevant to agriculture.
 - Strategy 2 is to invest in and use best available science and other technical information to inform climate preparedness work at King County.
 - Strategy 4 is to strengthen collaboration to address climate change and increase regional resilience. The latter includes elevating homes in the Snoqualmie 100-year floodplain, and possible expanded use of recycled water in areas such as the Sammamish Valley. Some Commissioners voiced reluctance to the recycled water idea; Mr. Martin offered to bring in someone from the County's Brightwater treatment facility to present to the Commission on this. Patrice Barrentine added that the WA Water Trust is

researching the issue and wants to use farmers' markets to test public opinion. Several Commissioners voiced interest in having someone from this group present to the Commission as well.

- Strategy 5 of this subsection is to invest in public outreach, engagement and tech assistance related to climate preparedness, such as encouraging farmers to join federal disaster insurance programs.

- **Q & A/Follow-Up Discussion**

Richard Martin said it was up to the Commission what, if any, follow-up action they should take with KCC on this issue. He stressed the goal of this presented summary is to balance agriculture with climate change preparedness, and no one type of agriculture should be singled out over others. It was suggested a Commission response to KCC be in the form of a strategy, based on King County's position in Washington State as a leader in terms of food processing and population. Patrice Barrentine said if the Commission wishes to send a letter to KCC, action would need to be taken before January. Jackie White, staff for Councilmember Kathy Lambert, advised KCC would review this item the second week of January at earliest.

- **Possible KCC Letter:**

Commissioners agreed they would like to send a letter to KCC. Richard Martin noted a letter would not have to be an exhaustive review of SCAP, but could focus on issues the Commission thinks KCC should consider. It was suggested to open the letter with a statement recognizing and supporting County efforts on this issue. Another Commissioner suggested Commissioners write as individuals to their Councilmember or KCC with their thoughts.

Darron Marzolf motioned for the Commission to meet in December to discuss the climate action plan and comments to KCC, write and send a letter to KCC about agriculture impacts from climate change. Kevin Scott-Vanderberge seconded the motion, which carried unanimously.

DISCUSSION/ACTION: Election of 2021 Commission Officers (Nayab Khan, Patrice Barrentine)

Ms. Barrentine reported that prior to this meeting, she reached out to Commissioners to gauge any interest in serving as chair or vice-chair in the coming year. They were either unavailable or provided no response. She said Mr. Khan and Kevin Scott-Vanderberge were willing to serve in these roles again in 2021, if no one else was able. No one present voiced an inclination to serve as an officer.

Leann Krainick motioned to re-elect Mr. Khan and Mr. Scott-Vanderberge, respectively, to the Commission chair and vice-chair positions for 2021. Darron Marzolf seconded the motion, which carried unanimously.

General Public Comment (Nayab Khan)

There was no public comment during this period.

Concerns of Commissioners (Nayab Khan)

- **Leann Krainick** said they would miss Sarah Collier immensely and thanked her for her work and support. Ms. Krainick also congratulated Lily Gottlieb-McHale on the coming birth of her child.
- **Patrice Barrentine** thanked the executive committee for their service this year. She said Ms. Krainick's term expires in February but may be extended depending on how long it takes to on-board new Commissioners.
- **Sarah Collier** praised Ms. Krainick's leadership and staying informed on issues. She thanked Ms. Barrentine for her shepherding of the Commission, and Richard Martin for always coming in with substantive updates.

Meeting adjourned at 8:01 pm

Next Meeting

Special Meeting: December 2020, Date/Time TBD (Zoom Video Conference Call)

Regular Meeting: January 14, 2021, 6:00 pm to 8:00 pm (Zoom Video Conference Call)

**King County****Water and Land Resources Division**

Department of Natural Resources and Parks

King Street Center

201 South Jackson Street, Suite 600

Seattle, WA 98104-3855

206-477-4800 Fax 206-296-0192

TTY Relay: 711

King County Agriculture Commission
DRAFT Special Meeting Minutes
Thursday, December 10, 2020 – 6:00 pm to 7:00 pm
Zoom Video Conference Call

Commissioners Present					
Nayab Khan, Chair	Y	Lily Gottlieb-McHale	N	Paul Pink	Y
Kevin Scott-Vanderberge, Vice-Chair	Y	Leann Krainick	Y		
Roger Calhoon	Y	Darron Marzolf	N		
Ex Officio Members Present					
Fereshteh Dehkordi, DLS	N	Kevin Wright, WSU	Y	Carrie King, KCD	Y
County Staff/Representatives Present					
Patrice Barrentine, DNRP		Richard Martin, DNRP		Megan Moore, DNRP	
Guests Present					
No guests present.					

Action Summary

- **Actions: Approval of Meeting Agenda; Deferral of Minutes Vote**
- **Old Business: Commission, County, and Organization Updates**
- **Discussion/Action: Strategic Climate Action Plan Proposed Letter to King County Council**

Meeting called to order by chair Nayab Khan at 6:03 pm

Roll Call/Announcement of Staff & Public (Nayab Khan)

Roll call of Commissioners and announcement of staff and public guests was done via the Zoom chat function.

ACTION: Approval of Meeting Agenda (Nayab Khan)

Paul Pink motioned to approve today's meeting agenda as-is. Kevin Scott-Vanderberge seconded the motion, which carried with unanimous approval.

ACTION: Approval of November Meeting Minutes (Nayab Khan)

Leann Krainick motioned to vote on the November and December meeting minutes at January's regular meeting. Kevin Scott-Vanderberge seconded the motion, which carried with unanimous approval.

Old Business – Updates

- **Commission Details (Patrice Barrentine):**
 - Carrie King was introduced as the new ex officio Commissioner representing King Conservation District.
 - Two past/present Commissioners recently received King County Historic Preservation Awards: Leann Krainick with her husband Mike Krainick, and former Commissioner Bob Tidball.
- **COVID-19 Updates (Patrice Barrentine):**
 - Leann Krainick reported a King County tool which helps facilitate safe returns to work for workers following COVID-19 infection. Two of her staff caught the virus outside of the farm. King County Public Health provided a letter to one employee confirming they had tested negative for the virus and met quarantine requirements to be allowed to return to work. Ms. Krainick praised this move by the County and offered to discuss it further in private if anyone wished.
 - Ms. Barrentine reported that of 26 farmers market organizations in the county (which run 41 markets), 21 have applied for COVID-19 expense reimbursements through the CARES program. 32 of the 41 markets will receive reimbursements. Richard Martin added that program participation on the farm business side, however,

did not meet expectations: as of today's date, 27 out of just 30 applicants had qualified for reimbursement, out of 1,800 total farms in the county. This does mean that reimbursement amounts for those who qualify can be greatly increased. However, an evaluation will likely occur to learn why more farms did not apply for the program. An evaluation of the farmers market portion is already underway.

- **King County Agriculture Program (Richard Martin):**
 - King County Council (KCC) has approved its budget for the next two years, with no expected cuts to the agriculture program.
 - The agriculture team is still tracking farmland acreage changes in the county, with the annual memo coming after the new year. Anyone with information on acreage changes was urged to let the agriculture team know.
- **King Conservation District (Carrie King):**
 - KCD is still recruiting for its agriculture drainage coordinator position, which has remained vacant for a year. Funds for the position, in the meantime, have been moved to support the Snoqualmie Watershed Improvement District's (WID) work to meet drainage work targets. However, with the position vacant there has been no outreach to forge relationships and line up summer field work. This means the hire for the position will have to act quickly on that front. Those with agriculture drainage issues should still be directed to KCD for assistance.
 - KCD's interim Executive Director reports that recruitment for the position recently vacated by Josh Monaghan should be posted next month.
- **Farm Bureau (Leann Krainick):**
 - Farm Bureau just held their 100th anniversary celebration, virtually. Hot topics included the election and legislative session.
 - Work continues for the "My Fork Supports Farms" campaign and the January budget.
 - The King-Pierce Farm Bureau (KPFb) has a new webpage with a "request a speaker" feature.
 - The next meeting of the KPFb is next week.
- **Local Food Initiative (Richard Martin):** There was no new information to report.

Public Comment – Related to Specific Agenda Item (Nayab Khan)

There was no public comment given during this period.

New Business - DISCUSSION/ACTION: Strategic Climate Action Plan (SCAP) Proposed Letter to KCC (Richard Martin)

Patrice Barrentine briefly recapped the presentation and discussion from November's meeting. She observed much of the Commission's November discussion focused on public input sessions, such as a vegetarian diet recommendation, that were ultimately not included as SCAP policy recommendations. She said while much work is needed to communicate with the public, she wanted to "reset" the Commission's discussion on SCAP to be able to delve more into its core issues.

A Commissioner noted while they didn't believe anything could be changed in the current SCAP document, the Commission could still recommend what they'd like to include in the future, what farmers need to reach SCAP goals. Richard Martin explained that while the County tried to incorporate agricultural concerns when drafting the plan, it would help in any letters to KCC for the Commission to clarify areas it does or doesn't support. This includes ideas to advance visions for the future and needed actions to affect those changes. The letter should be clear and concise. Mr. Martin further added if there are ideas in SCAP that the Commission has concerns about and wants to be involved in those discussions, those issues can be put on Commission agendas.

Ms. Barrentine presented a draft letter for Commission review, which had passed through DNRP internal review but could still include minor amendments. Commissioners reviewed the draft and made several suggestions to clarify language and intent. Suggested revisions included:

- Use "further implement" instead of "explore" to address strategies the County already utilizes for recycling of FDA-approved food waste via methods such as livestock feed.
- When addressing tractor technology, replace "low gear technology" with language along the lines of "alternatives to diesel, or cleaner diesel tech."
- Add language urging financial incentives for farmers to invest in cleaner diesel alternatives.
- Add a statement encouraging growth of local food, noting Commission support for the Local Food Initiative.

Leann Krainick motioned to approve and transmit the proposed letter to those addressed, with the changes made on Ms. Barrentine's draft. Paul Pink seconded the motion, which carried with unanimous approval.

Concerns of Commissioners (Nayab Khan)

- **Leann Krainick** thanked all Commissioners for their work in 2020, noting the unusually high number of letters sent by the Commission this year.

Meeting adjourned at 7:18 pm

Next Meeting

January 14, 2021, 6:00 pm to 8:00 pm (Zoom Video Conference Call)



Meetings, Conferences, Events and Key Dates

REGARDING KING COUNTY
AGRICULTURE

JANUARY 2021



Coming Up



Food Events



Farm Events



Public Meetings

Meetings, Conferences, Events and Key Dates

King County Events and Public Meetings

- <https://www.kingcounty.gov/about/news/events.aspx>
- MLK, Jr Holiday January 18th
- Council Meetings 1.19.21
 - [Proposed Motion No. 2021-0047](#) A MOTION providing direction to the *conservation futures advisory committee on priorities for allocating conservation futures tax levy proceeds*. Sponsors: Mr. Dembowski First Reading and Referral to the Mobility and Environment Committee
 - [Proposed Motion No. 2020-0288](#) A MOTION relating to the *2020 Strategic Climate Action Plan*, submitted in compliance with K.C.C 18.25.010. Sponsors: Mr. Dembowski and Mr. Upthegrove First Reading and Referral to the Mobility and Environment Committee



WA State Legislative Session began Monday January 11th – and will last 105 days (this is a regular, not a short session) and is taking place Virtually this year

WASHINGTON STATE LEGISLATURE

Legislature Home

House of Representatives

Senate

Find Your District

Laws & Agency Rules

Bill Information

Agendas, Schedules, & Calendars

Legislative Committees

Coming to the Legislature

Legislative Agencies

Legislative Information Center

Email Updates (GovDelivery)

Legislature Home

COVID-19 Update: Access Services COVID-19 Information

What's happening

Today is Day 4 of the 2021

House Floor Calendar

Please check the Comm

Scheduled hearings

Business, Financial

Capital Budget (H)

Finance (H)

Housing & Local Gov

Labor, Commerce & T

PRO FORMA HOUSE SE

Health Care & Wellnes

Highlights

Legislative Hotline: 1.800.

Accessing the Legislature R

Employment Opportunities

Public Records Requests

Premiered Jan 12, 2021

Washington Grown Season 8 Episode 2 "Livestock"

King County Agriculture
Commissioner, Darron
Marzolf, featured on
Washington Grown

[https://youtu.be/3059
PNy68EA](https://youtu.be/3059PNy68EA)

17:42-20:21



washington
grown

▶ 🔊 1:11 / 26:46

Scroll for details

Country Living Expo & Cattlemen's

Winterschool 2021

3 Day Virtual Event 80 Classes Choose 12!

Schedule Your Own Free Family Viewing of

Kiss The Ground

Adults: \$55.00 Students \$10.00

We've brought our most popular classes/instructors
to this year's Expo along with 10 Brand New Classes!

Brochure with Class Descriptions: skagit.wsu.edu/countrylivingexpo

<https://countrylivingexpo.wufoo.com/forms/q82f10dlv1sdn9/>

January 29,30,31 via Zoom

12 classes for \$55.00

Registration form:

<https://countrylivingexpo.wufoo.com/forms/q193i2ad0vnknm9/>





Sessions from 9:30-11:00 AM and 1:00-2:30 PM (PST) each day.

These topics will be relevant to producers, consultants, agricultural professionals, University faculty and students, policy makers, conservation districts, and interested members of the general public.

FREE

For more info: <https://soilhealth.wsu.edu/soilcon-washington-soil-health-week>

WA State Farmers Market Association Conference

- February 23 – 26,
2021: Farmers Market
Conference
- 9:30 am to 1:00 pm
each day.

<http://wafarmersmarkets.org/2021-wsfma-conference/>



Food Biz Week

- **What is Food Biz Week?**
- A free opportunity for food and farm businesses at all levels of food production and food retail in the Pacific Northwest to learn from industry experts and fellow experienced colleagues through a curated week of virtual panels, presentations, and networking activities. The event will be all virtual and free so food and farm entrepreneurs are invited to attend from **anywhere in the region**.
- This year Business Impact NW partnered with the [Seattle Good Business Network](#) and [Sustainable Connections](#) to host Food Biz Week.
- When you register for Food Biz Week you are given access to Monday, Wednesday, Thursday, and Friday's events, please indicate below one or all of the sessions you would like to attend.
- On Tuesday, February 23rd of Food Biz Week, our partners Sustainable Connections and the Seattle Good Business Network are hosting the [Farm-To-Table Trade Meeting](#) - a half-day virtual event that invites folks working in the food and farm community to connect, create and strengthen market partnerships, and learn from each other about programs and solutions to support the needs of your business and organization in 2021. This is a paid event run by our event partners [Sustainable Connections](#) and the [Seattle Good Business Network](#). Learn more about the Farm-To-Table Trade Meeting and register [here](#).
- Preview of Daily Events:
- **Monday February 22nd** – *Farm Businesses*
- **Tuesday February 23rd** – *Farm-to-Table Trade Meeting* ([register here](#))
- **Wednesday February 24th** – *Packaged Food/Value-Add Businesses*
- **Thursday February 25th** – *Financing for Food & Farm*
- **Friday February 26th** – *Foodservice Businesses*

COVID VACCINATIONS FOR ESSENTIAL WORKERS

INCLUDING AGRICULTURE, FOOD PROCESSING, GROCERY
RETAIL



PHASE 1B - TIER 2 “PHASE 1, B2”

- Critical workers 50 years and older with significantly high risk of exposure and transmission in congregate settings [note: congregate setting suggests an environment where individuals work and/or live in an enclosed space where they are interacting with a high volume of people over extended time and not able to consistently social distance] Specific groups and guidance are included below – although discretion is left to the employer to assess risk (note: workers who are able to socially distance, work remotely or work off-site not in a congregate setting should not be included):
- **Congregate agriculture** – specifically those who work and/or live in a congregate setting interacting with a high volume of co-workers (vs. animals) over extended periods of time (i.e., >3 hours in 24 hour day). Relevant roles are more likely to include crop selection, production and packaging vs. equipment maintenance
- **Congregate food processing** – specifically those who work and/or live in a congregate setting interacting with high volume of co-workers (vs. animals) over extended periods of time (i.e., >3 hours in 24 hour day)
- **Congregate grocery store workers** - specifically those who work in a congregate setting interacting with high volume of co-workers over extended periods of time (i.e., >3 hours in 24 hour day). We encourage considering prioritizing retail stores of higher density/volume.

WASHINGTON'S COVID-19 VACCINE PHASES

Phase 1 Estimated Start Dates (Tiers A and B)

Find out if it's your turn at **FindYourPhaseWA.org**

DECEMBER 2020

JANUARY 2021

FEBRUARY

MARCH

APRIL

MAY- DECEMBER

Each group will become eligible for the vaccine one at a time and will continue to be eligible throughout the vaccine distribution.

**A1
A2**

- High-risk healthcare workers in health care settings
- High-risk first responders
- Long-term care facility residents
- All other workers at risk in health care settings

B1

- All people **70 years or older**
- All people **50 years or older** in multigenerational households (home where individuals from 2 or more generations reside such as an elder and a grandchild)

B2

- High-risk critical workers **50 years or older** who work in certain congregate settings: Agriculture; food processing; grocery stores; K-12 (educators & staff); childcare; corrections; prisons, jails or detention centers; public transit; fire; law enforcement

B3

- People **16 years or older** with 2 or more co-morbidities or underlying conditions

B4

- High-risk critical workers **under 50 years** who work in certain congregate settings (as noted in B2)
- People, staff, and volunteers in congregate living settings: Correctional facilities; group homes for people with disabilities; people experiencing homelessness that live in or access services in congregate settings

FUTURE PHASES

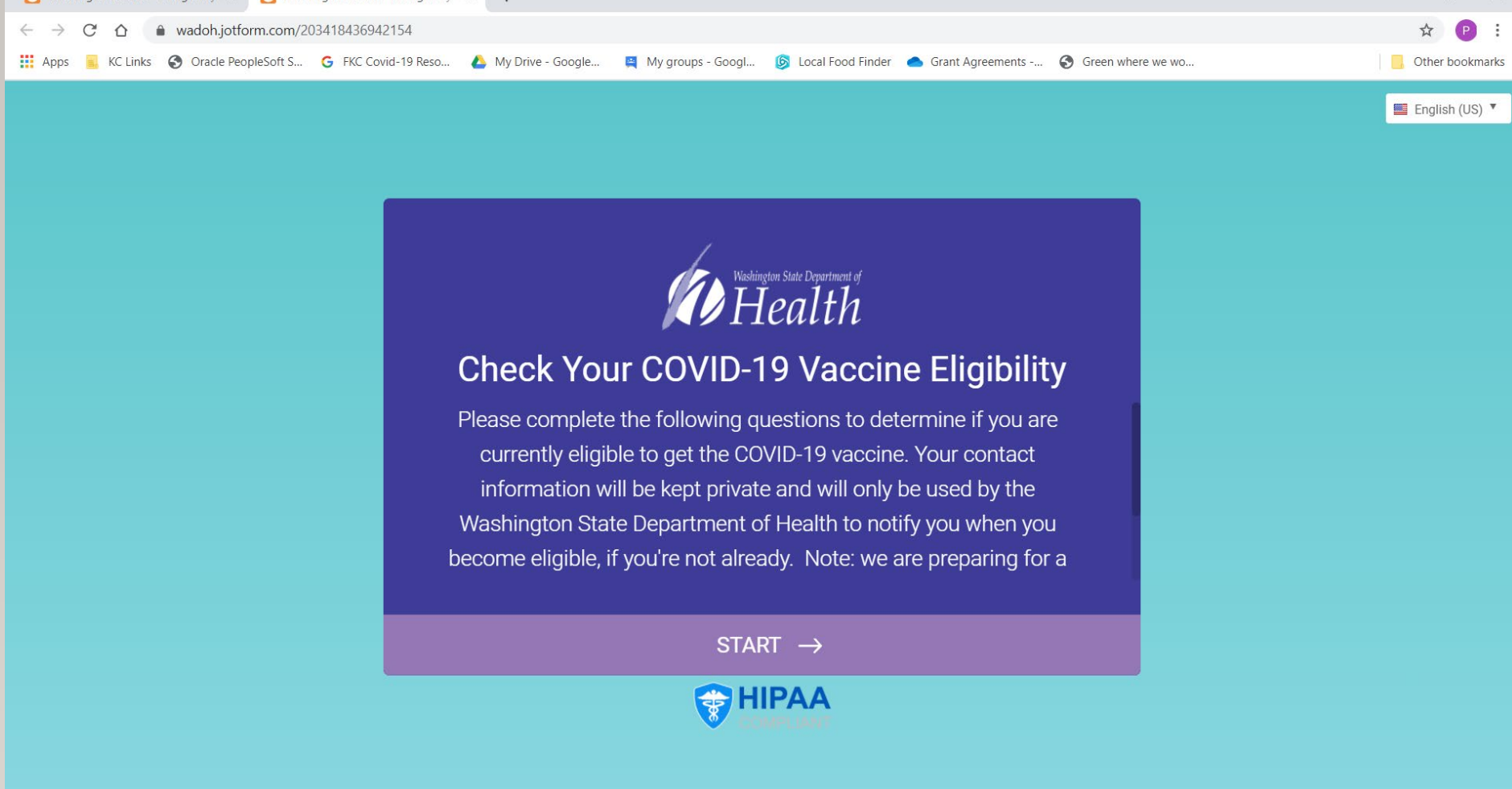
- Information on who is eligible for Phases 2, 3 & 4 coming soon.

FOCUS ON EQUITY: This approach prioritizes population groups that have been disproportionately impacted by COVID-19 due to external social factors and systemic inequities.

The timelines represented here are estimates and subject to change.

**Vaccinate
WA**

CovidVaccineWA.org



Washington State DOH is piloting the [Phase Finder](#) tool, an online self-assessment to help people find out if they are eligible for vaccination under Phase 1a.

Phase Finder will also provide:

- confirmation of eligibility that can be shown at a vaccination site
- a link to a list of available sites for vaccination.



Commission 2020 Year in Review and Topics for 2021

KING COUNTY AG COMMISSION

JANUARY, 2021

2020: What a year!



2020 Ag Commission in Review

Q1	Q2	Q3	Q4
Farm Fish Flood Progress Review and Feedback, Regulatory and Permitting program review	Virtual Meetings begin	Covid Response: Agriculture Biz Impacts, KC CARES Act relief funding for farms, farmers markets, and food banks	10.29.20 Letter to Council re: Budget items of appreciation and concern
Commissioner Recognition of Service, WA State Legislature Agriculture Bills – WSFB	4.9.20 Letter to Executive and Council in Support of Farmers Markets being open during Covid	9.10.20 Letter to Executive Broadband in Snoq Grant proposal letter of support	12.10.20 Letter to Council re: Strategic Climate Action Plan (SCAP)
Meeting cancelled due to Covid outbreak	Covid Response: Co-host of County-wide Farmer Call, Farm King County website and team activation	WSFB covid resources, Local Food Finder Map, Webpages updated with meeting info, photo refresh, Tourism and Promotion Discussion	Election of Officers for 2021

Ag Commission Planning for 2021

Q1

Recycled Water Project in
Sammamish APD
KC DNRP and Commission
re: Social Media and Ag in KC

Q2

Farm Fish Flood Update and
Feedback

Q3

Q4

Selection Committee,
Wildlife and Livestock,
WDFW, Livestock Program
Review

Land: Farm Real Estate and
Covid, FPP Program Update,
County Assessor Current Use
Program

Commissioners by District 2021

Pos.	Name	KC Dist
1	Lily Gottlieb-McHale	9
2	Paul Pink	9
3		
4		
5		
6		
7		
8	Kevin Scott-Vanderberge	2
9	Leann Krainick	9
10		
11	Darron Marzolf	3
12	Nayab Khan	3
13		
14		
15	Roger Calhoon	3

King County Councilmembers



King County Councilmembers (from left): Council Vice Chair [Joe McDermott](#) (District 8), [Kathy Lambert](#) (District 3), [Girmay Zahilay](#) (District 2), Council Chair [Claudia Balducci](#) (District 6), [Dave Upthegrove](#) (District 5), [Jeanne Kohl-Welles](#) (District 4), Council Vice Chair [Reagan Dunn](#) (District 9), [Pete von Reichbauer](#) (District 7), and [Rod Dembowski](#) (District 1).

RECYCLED WATER

Increasing Adoption of Recycled Water for Irrigation Supply:
Water Security and Salmon Restoration

Nicole Gutierrez, WWT Project Associate
Jason Hatch, WWT Program Director



WASHINGTON WATER TRUST



WASHINGTON WATER TRUST

Working to restore our state's rivers and streams.

- Nonprofit Organization
- Improve and protect stream flows throughout Washington.
- Develop mitigation programs
- Voluntary, cooperative, market-based strategies

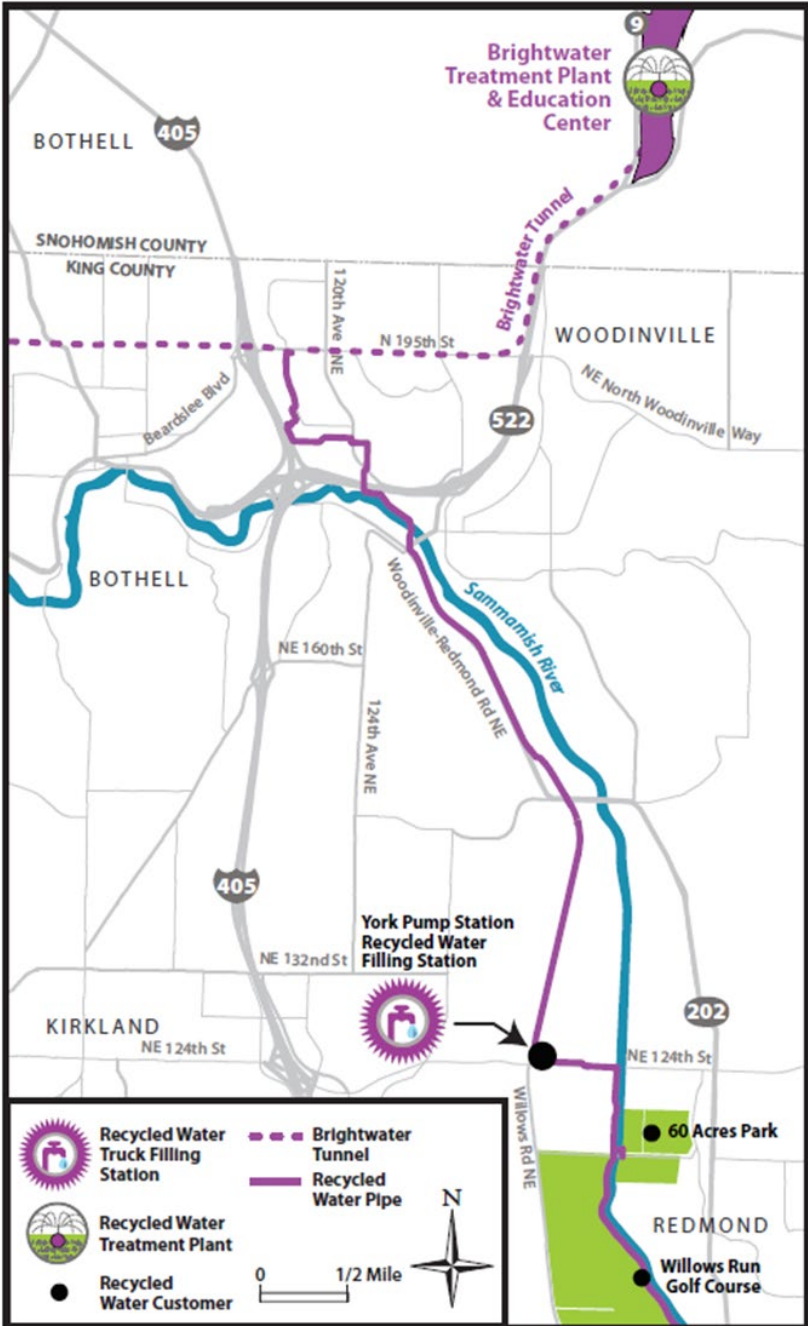


WASHINGTON
WATER TRUST

FLOW RESTORATION TOOLS

- ✓ Water Rights Assessments
- ✓ Dry-year “options”
- ✓ Source substitution
- ✓ Changing point of diversion
- ✓ Water conservation (efficiencies)
- ✓ Water banking
- ✓ Water Lease/Purchase
- ✓ New Crop Rotations
- ✓ New Supply
 - Rainwater
 - Off Channel Storage
 - Stormwater
 - Public Water
 - Recycled Water
 - Natural System Storage





SAMMAMISH VALLEY

King County
Department of Natural Resources and Parks
Wastewater Treatment Division



SUSTAINABLE WATER PRACTICES

Project Partners

- Washington Water Trust
- Washington State University Puyallup Extension
- King County Wastewater Treatment Division

Project Components

- Recycled water research garden in the Sammamish Valley
 - ✓ Will evaluate the impact recycled water vs. river water on soil and produce
- Outreach conducted within the food supply chain to address concerns and increase consumer demand for recycled water

3-5 CFS Potential Restoration-Irrigation Water Rights

THE SAMMAMISH VALLEY

- Sammamish River supports populations of Chinook, coho, sockeye, kokanee, steelhead, and coastal cutthroat.
- Home to some of the most productive agricultural lands in WA state.
- Growing demand for water resources.
- King County Brightwater Treatment Plant/pipeline.





PROJECT OBJECTIVES

- **Evaluate perceptions and concerns along the food supply chain related to the use of recycled water for irrigation.**
- Conduct in basin research study to address/improve food supply perception of the use of recycled water on food crops.
- Reduce the reliance on surface diversions from Sammamish River.

FOOD SUPPLY CHAIN OUTREACH

- *Key Contacts*-directory of all producers in the Valley.
- *Questionnaire*-baseline understanding of their knowledge, concerns, and interest in recycled water.
- *Interviews*-13 producers to date
- *2021: Food Supply Chain*-Producers, Restaurateurs/Grocers and consumer outreach



PRODUCER FIELD DAY





PROJECT OBJECTIVES

- Evaluate perceptions and concerns along the food supply chain related to the use of recycled water for irrigation.
- Conduct in basin research study to address/improve food supply perception of the use of recycled water on food crops.
- Reduce the reliance on surface diversions from Sammamish River.

RECYCLED WATER RESEARCH GARDEN

Partners

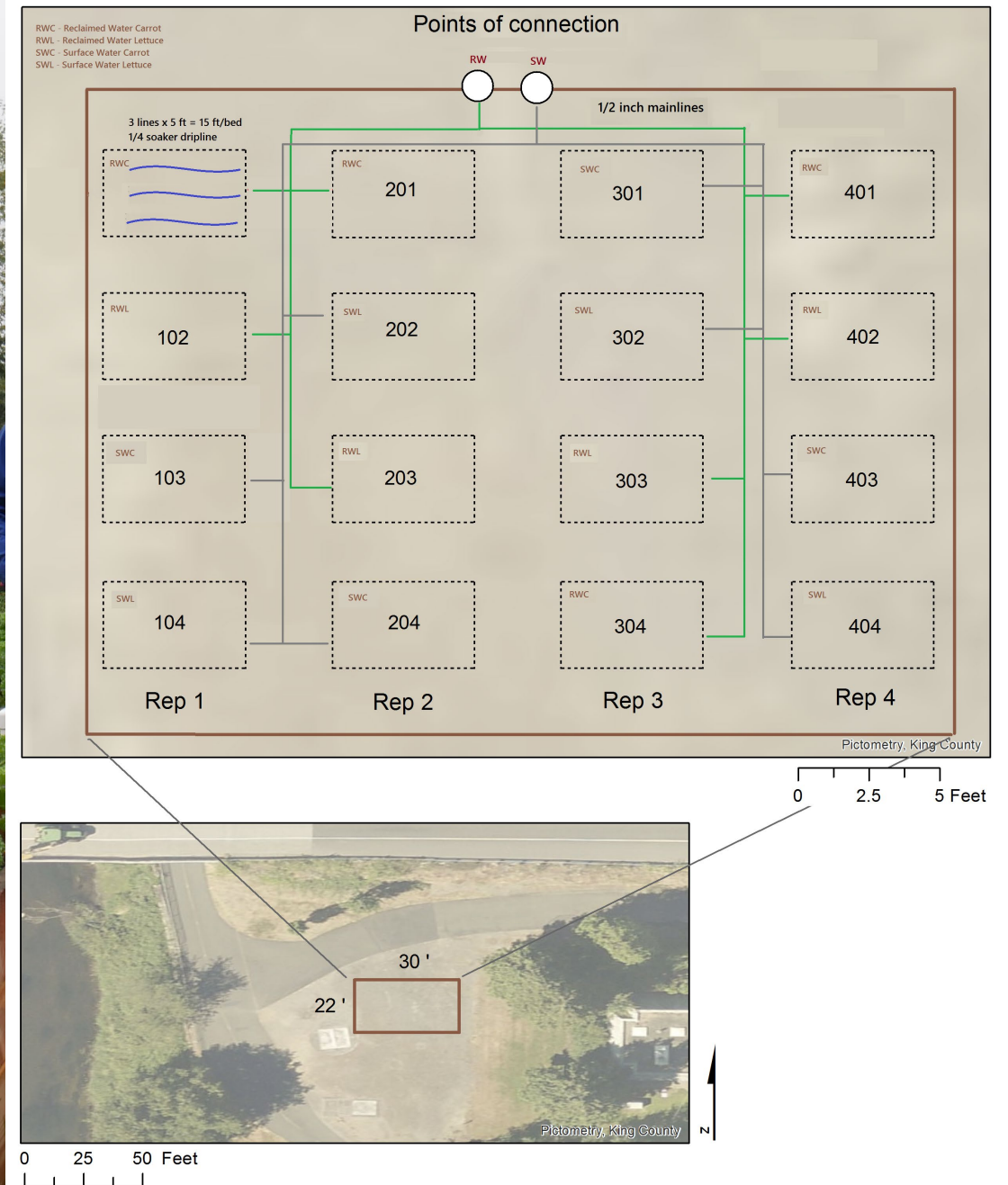
Washington Water Trust

Washington State University Puyallup Extension

King County Wastewater Treatment Division

Consultant – University of Washington

Study: evaluate the impact of recycled water vs. Sammamish River water on soil and produce.



SAMPLING PLAN



RESEARCH GARDEN PROGRESS (2020)





GARDEN HARVEST







PROJECT OBJECTIVES

- Evaluate perceptions and concerns along the food supply chain related to the use of recycled water for irrigation.
- Conduct in basin research study to address/improve food supply perception of the use of recycled water on food crops.
- **Reduce the reliance on surface diversions from Sammamish River.**

PRODUCERS WITH
IRRIGATION WATER
RIGHTS SWITCHING TO
RECYCLED WATER FOR
THEIR IRRIGATION

=

MORE WATER
INSTREAM

3-5 CFS POTENTIAL RESTORATION-
IRRIGATION WATER RIGHTS

+

CLIMATE RESILIENT
WATER SUPPLY FOR
IRRIGATORS



Carol Hook Courtesy Woodinville Media Group



2021

Continued Outreach along
the Food Supply Chain
Share Year 1 Study Results
(Technical Report)
Year 2 of the Research Study

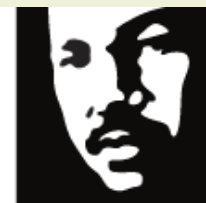


QUESTIONS?



PROJECT
FUNDERS:

BULLITT
FOUNDATION



King County

K&D
King Conservation District


WASHINGTON
WATER TRUST

Communication & The Ag Commission



King County

Department of Natural Resources and Parks

Saffa Bardaro, Communications Manager

Water and Land Resources Division



Let's talk about communication


1. How to increase the visibility of the Ag Commission's work.
2. How to amplify stories and messaging.
3. What platforms are available through King County.
4. Why you should write a communication plan.

Increase visibility

- Identify gaps in awareness.
- Identify where people get their information.
- Identify all the ways you can share information.
- Identify what you want people to know.
 - Resources?
 - Regulations/requirements?
 - Opportunities/need for input, feedback, engagement?

Amplify stories and messaging

1. Share your stories, announcements, news among partners (e.g., the Local Food Initiative).
2. Newsletters
3. Social media
4. Tours (virtual and in person, observing social distancing guidelines).
5. Community events.
6. Web sites/social media channels.
 - Not just “build it and they will come.”



[Home](#)
[How do I... ▾](#)
[Services ▾](#)
[About King County ▾](#)
[Departments ▾](#)

Water and land services

Agriculture

Farm products

Documents

Cost-share guidelines for livestock BMP's

Manure management

Agriculture Commission

Commissioners

Activities calendar

Contact the Commission

Farmers markets

Market Managers

Home ▸ Services ▸ Environment ▸ Water and land services ▸ Agriculture ▸ Agriculture Commission

King County Agriculture Commission

The Commission consists of 15 members, all appointed by the County Executive. Eight of the commissioners must be producers engaged in the business of producing an agricultural commodity for market in commercial quantities. All members serve three-year terms.

The Agriculture Commission represents the diversity of the King County agricultural economy and consists of 15 members appointed by the County Executive and confirmed by County Council. Within the agriculture sector, eight of the commissioners must be commercial producers of an agricultural product. Additional commissioners must be persons with demonstrated knowledge, experience and interest in food and feed processing, wholesale and retail marketing, produce buying, direct marketing, supply and finance, or agricultural real estate. Commissioner terms are three years.

Activities

Commissioners meet nine times each year to discuss and make recommendations to staff, the Executive and Council on King County agriculture policy, recommendations and programs as well as conduct the business of the commission. Public comment is offered at commission meetings to hear concerns of farmers and the agriculture sector at large. Annual topics at commission meetings include King County's:

- Agricultural Drainage Assistance Program
- Farmland Preservation Program
- Livestock Program
- Code or Regulatory changes
- Permitting Barriers and Barrier Removal
- County Executive Initiatives
 - Local Food Initiative
 - Land Conservation Initiative
- Council Directives
 - Farm, Fish, Flood

In addition, Council Members, agriculture organizations, Washington State University Extension, county departments, and other county, state and federal agencies come to commission meetings as speakers or for outreach on agricultural opportunities or challenges.

Roster of current commissioners

The Agriculture Commission holds committee meetings to delve into specific areas of interest. Additionally, the commission conducts educational field trips each year to inform commissioners, staff, King County leadership and Council Members on highlights and key challenges within the agriculture sector.

For questions about the King County Agriculture Commission, please contact Patricia Barrentine.

Related information

- Agriculture Program
- Rural service directory
- Agriculture in King County, Washington

Related agencies

- Water and Land Resources Division
- Department of Natural Resources and Parks

Share

Tweet

Print

Last Updated June 13, 2017

kingcounty.gov/AgComm

- How do you use your web site?
- Is it optimized?
- How do people know the information exists?
- Where do you share your own news and stories and look for news that interests you?

King County & DNRP platforms available



- News releases (for earned media).
 - KC/DNRP can support distribution
- Social media – distribution via DNRP
 - Facebook - facebook.com/KingCountyDNRP
 - Twitter - twitter.com/KCDNRP
 - Instagram - instagram.com/kingcountydnrp
 - DNRP Blog – kingcountygreen.com
 - WLRD Blog – kingcountydownstream.org
- Email list serve - kingcounty.gov/subscribe
- Engagement Hub - publicinput.com/kingcounty



King County Engagement Hub

Welcome! Our King County Engagement Hub is where you can help shape the future of your community. We invite your comments, feedback and ideas on important initiatives.

155K

VIEWS

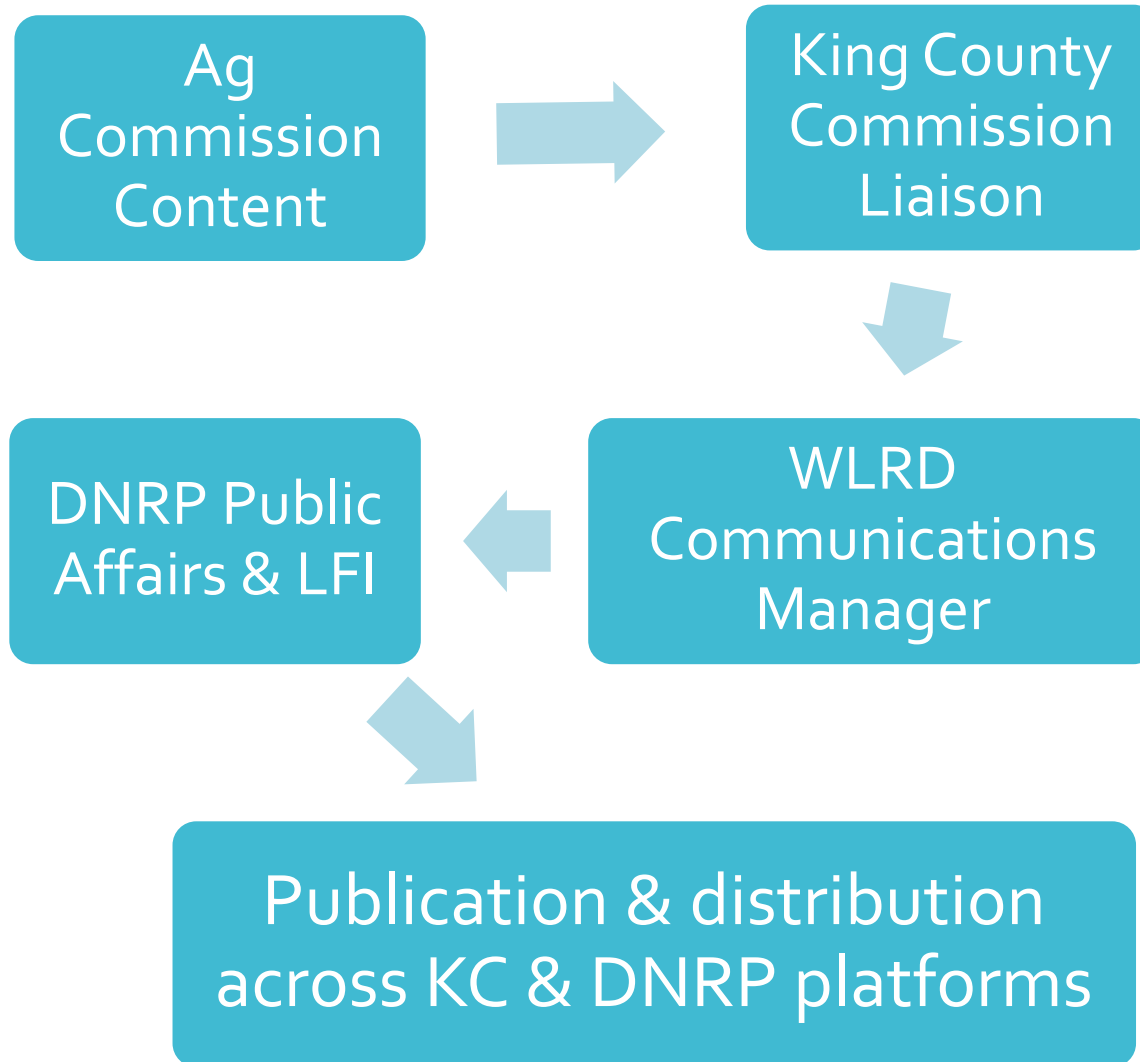
29K

PARTICIPANTS

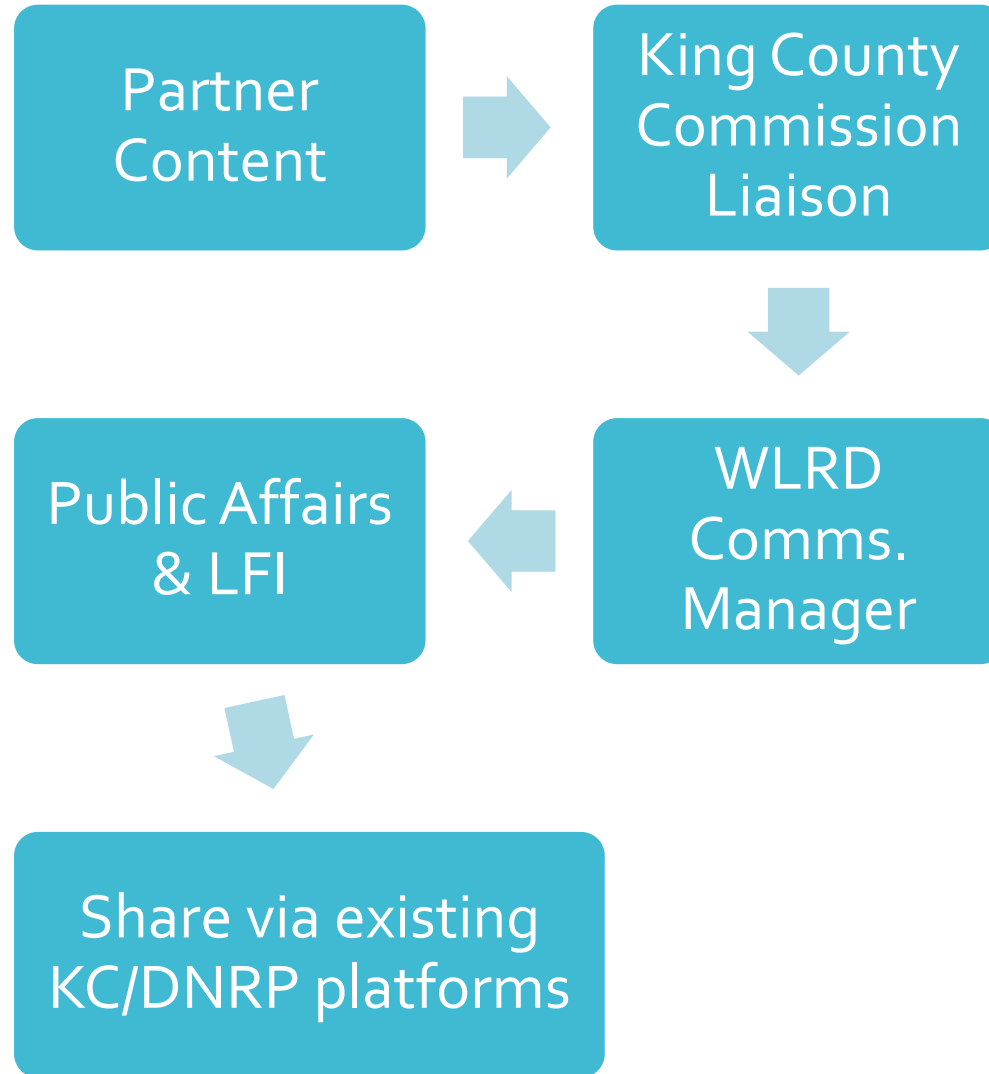
609K

RESPONSES

Communication coordination for original content



Communication
coordination for
amplifying
partner content



Communication planning

A communication plan covers:

1. Define your communication goals.
2. Define how to reach those goals.
3. Define who you want to reach (your audience).
4. Define how you will reach those audiences.
 - What tactics and platforms will you use?
5. Define who will implement the plan.
6. Create an editorial or event calendar to plan what you want to communicate about (annual events, announcements, accomplishments).
 - This gets updated throughout the year.

Questions?

Saffa Bardaro, Communications Manager

Water and Land Resources Division

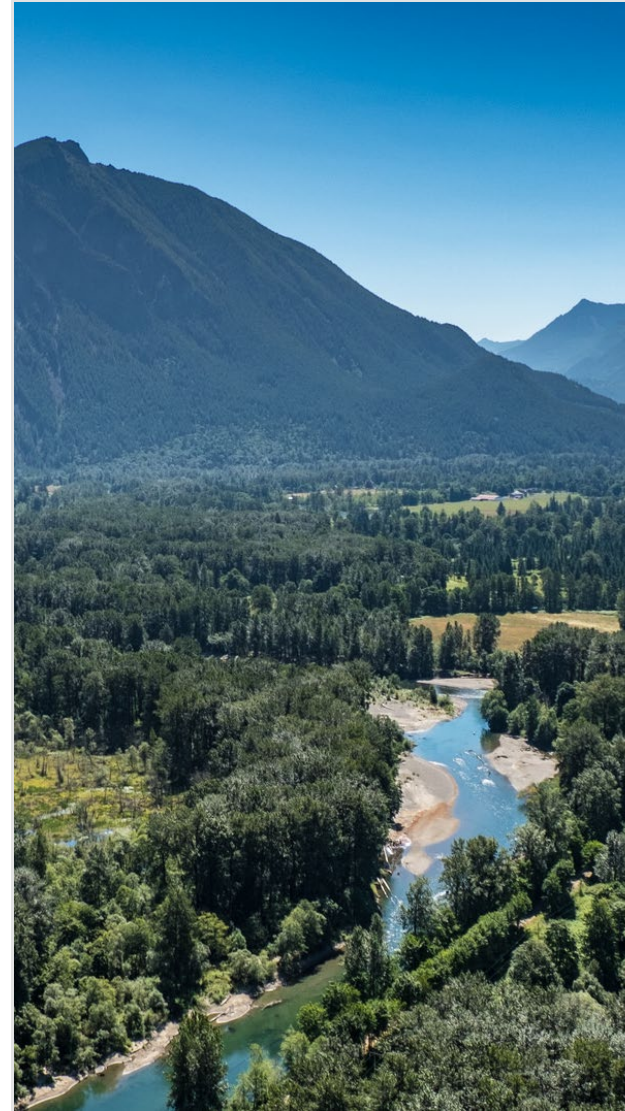
206-477-4610

Saffa.Bardaro@kingcounty.gov



King County

Department of Natural Resources and Parks





King County
Agriculture Commission
Water and Land Resources Division
Department of Natural Resources and Parks
King Street Center
201 South Jackson Street, Suite 600
Seattle, WA 98104-3855
206.477-4800 Fax 206.296.0192

December 10, 2020

The Honorable Claudia Balducci
Chair, King County Council
516 Third Ave, Room 1200
Seattle, WA 98104

Dear Councilmember Balducci:

The King County Agriculture Commission is concerned about climate change impacts on farming and food businesses including flooding, increased demand for irrigation water, and the challenge of producing food while facing new pathogens, pests and diseases in this region.

The commission supports elements in the 2020 Strategic Climate Action Plan (SCAP) including accelerating acquisitions of farmland preservation program easements, assessing impacts of climate change on King County agriculture, updating the vulnerable roads assessment, expanding use of recycled water, increasing home elevations, flood risk outreach, and participation in disaster relief programs. The commission also supports adopting comprehensive planning for County owned farmland and incorporating regenerative farming practices, increasing PBRs enrollment, supporting immigrant and refugee farming program, exploring benefits of compost, and amending the farm plan public rule to include climate resiliency and preparedness.

While farmers would like to adopt many of these strategies to address climate change, the commission stresses that financial incentives are needed to make that happen. In technology research and development, alternatives to diesel or clean diesel technology is needed for farming and distribution. Resources are needed to fund technical assistance and cost-share programming so that farm and food businesses have the knowledge and financial incentives to adopt SCAP strategic actions. The SCAP plan documented a wide range of public understanding about the impacts of climate change to farmers and the importance of a “climate friendly” agricultural practices. The Commission has long been an advocate for public education regarding agriculture and climate change and this, too, will require resources.

Although not explicitly included in the SCAP update, the Commission encourages the County to further implement strategies that incorporate FDA approved food processing waste into livestock feed. King County leads the state in food processing and there is significant opportunity to re-route landfill waste to livestock operations. The Commission supports the Local Food Initiative and encourages a key link between SCAP to local food consumption and production.

We appreciate the County’s leadership to both reduce greenhouse gas emissions and positioning

landowners to be able to adapt to a changing climate. The Agriculture Commission looks forward to working with staff to fully develop and implement ag-related strategies included in the SCAP, including pursuit of funding options to assist with implementation. We recognize that this plan is only the next step in a steady progression toward a more resilient future and the Agriculture Commission will contribute to future revisions as the science develops and the needs of farmers become more apparent.

Sincerely,



Nayab Khan, Chair
King County Agriculture Commission

cc: Dow Constantine, County Executive, King County
King County Councilmembers
Christie True, Director, Department of Natural Resources and Parks (DNRP)
Mo McBroom, Deputy Director, DNRP
John Taylor, Director, Department of Local Services
Josh Baldi, Division Director, Water and Land Resources Division (WLRD),
DNRP
Pat McLaughlin, Division Director, Solid Waste Division, DNRP
Mark Isaacson, Division Director, Wastewater Treatment Division, DNRP
Katherine Taylor, Government Relations, DNRP
Richard Martin, Manager, AFI, WLRD, DNRP
Patrice Barrentine, Staff Liaison, Agriculture Commission, WLRD, DNRP