

COMPREHENSIVE PLAN 2024 UPDATE

BACKGROUND






In Washington state, the Growth Management Act was adopted in 1990 as a response to rapid and uncoordinated development



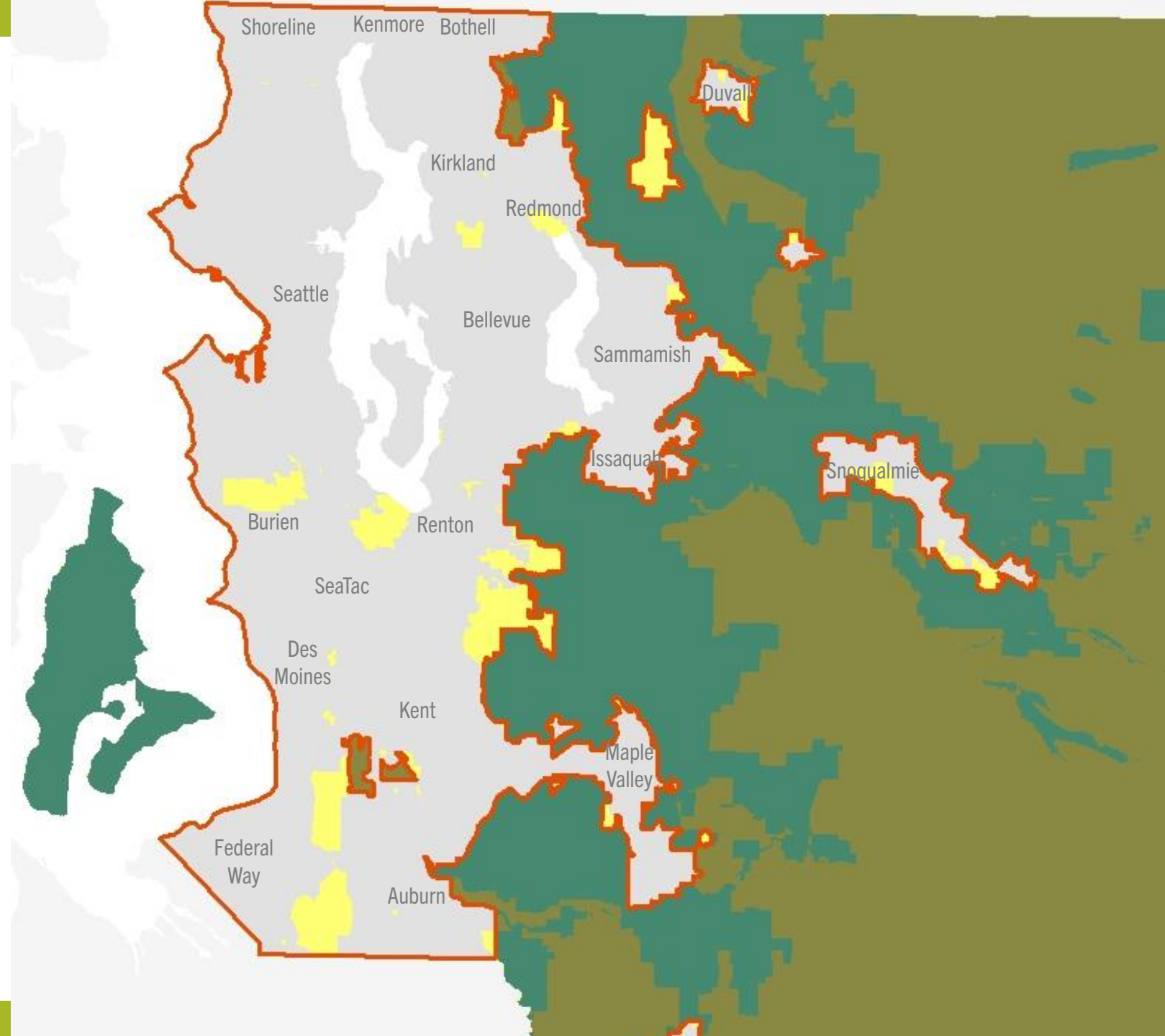
Key geographic areas

 **Urban Growth Area** Housing and job growth is focused in the Urban Growth Area to protect rural and resource lands and deliver efficient services, characterized by higher density development

 **Urban Unincorporated Area** Portions of the Urban Growth Area outside of city limits

 **Rural Area** Outside the Urban Growth Area and Resource Lands, characterized by small-scale farming and forestry and low-density residential development

 **Natural Resource Lands** Designated for agriculture, forestry, or mining





Regionally, **96%** of permitted housing units are in cities and urban areas, helping keep our working lands working

King County's Comprehensive Plan

- The Comprehensive Plan is unincorporated King County's **local land use plan**.
- Unincorporated King County also has **a key ecological role** in the Puget Sound region. Most of the region's farm, forest, and mineral production areas are located here, as are critical environmental conservation areas.
- The plan also guides how **local and regional services** are provided by the County, such as roads, parks, buses and ferries, wastewater, and solid waste.

Scoping & public feedback themes

Social Equity	Housing	Climate Change
<ul style="list-style-type: none">• Address racially discriminatory policies• Address housing, cultural, and economic displacement• Improving health disparities by race and place	<ul style="list-style-type: none">• Plan for and accommodate housing for all incomes• Expand housing choices• Improve housing equity, access, and stability<ul style="list-style-type: none">○ especially for those earning less than 80 percent of the area median income and those who are Black, Indigenous, People of Color, immigrants, and/or refugees	<ul style="list-style-type: none">• Advance Strategic Climate Action Plan and greenhouse gas reduction goals• Reduce climate-related impacts for frontline communities• Heat islands and urban green spaces

Schedule

2022				2023				2024
Q1	Q2	Q3	Q4	Q1	Q2	Q3	Q4	Q1-Q4
Create scope	Public input on scope Scope approved	Public survey to inform plan development	Develop early plan proposal concepts	Public input on early concepts (Comment period in February)	Develop and issue Public Review Draft plan for public input (45-day comment period from June - July)	Refine & report back	Final Executive-Recommended Plan (Submitted Dec 2023)	Council Review, Amendment, & Adoption (Adopt by Dec 2024)



Opportunities to meaningfully shape Plan content

Implementing the Plan

After King County Council adoption, the Plan is **implemented** and **reflected** through a variety of ways:

- ✓ King County Code > Review and approval of development proposals
- ✓ Subarea plans
- ✓ Topic-specific functional and implementation plans > Planning for new or updated facilities, programs, and services
- ✓ King County Budget > Community needs lists
- ✓ Public information materials and engagement activities
- ✓ Work with other jurisdictions and service providers

PROPOSALS



<https://kingcounty.gov/~media/depts/executive/performance-strategy-budget/regional-planning/2024-KCCP-Update/PubRevDraft/01-2024-KCCP-PRD-060123.ashx?la=en>

Key Equity Scope Topics



- Integrate a **pro-equity and anti-racist policy framework** into the Comprehensive Plan.
- Reduce **housing displacement**.
- Improve **health equity outcomes** in communities with the greatest and most acute needs.

Key Housing Scope Topics



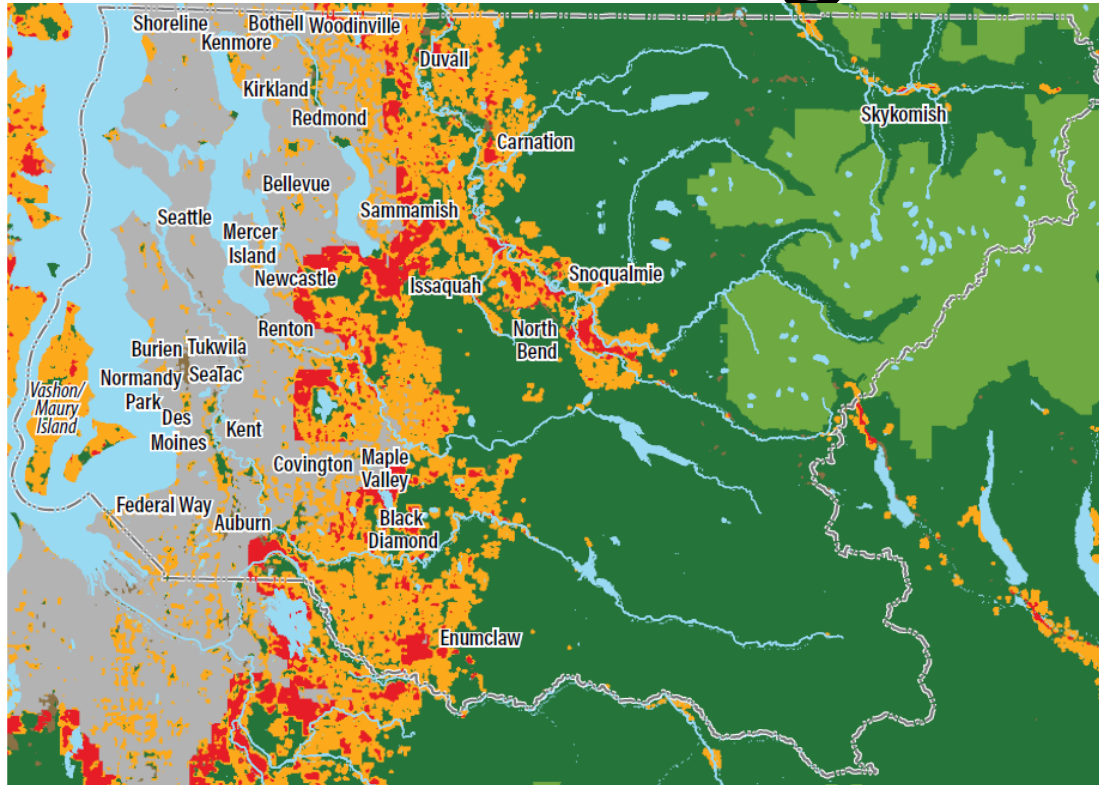
- **Improve affordable housing supply**, especially for those who are Black, Indigenous, People of Color, immigrants, and/or refugees and that earn less than 80 percent of the area median income.
- **Expand range of housing options** available at all income levels.

Key Climate Change & Environment Scope Topics



- Reduce greenhouse gas emissions, support sustainable and resilient communities, and prepare for **climate change**.
- Integrate and implement **Clean Water, Healthy Habitat** goals.
- Increase **land conservation**.

Climate Change & Environment



Require the County to take steps to **plan for and reduce wildfire impacts** in the wildland-urban interface in unincorporated King County.

King County Wildland-Urban Interface (WUI)

- Long-term Non-Buildable Areas
- WUI - Interface
- WUI - Intermix
- Non-Vegetated Inhabited
- Non-Vegetated Uninhabited
- Vegetated Uninhabited



220720_12894m_WUIRisk_Map.apr
K:\arom\ForGraphics\WildlandUrbanInterface\WildfireRisk_To_Megann.mxd
Department of Natural Resources (DNR), Wildlife Division, Forest Health Division

The use of the information in this map is subject to the terms and conditions found at www.kingcounty.gov/services/gis/Maps/terms-of-use.aspx. Your access and use is conditioned on your acceptance of these terms and conditions.

Climate Change & Environment



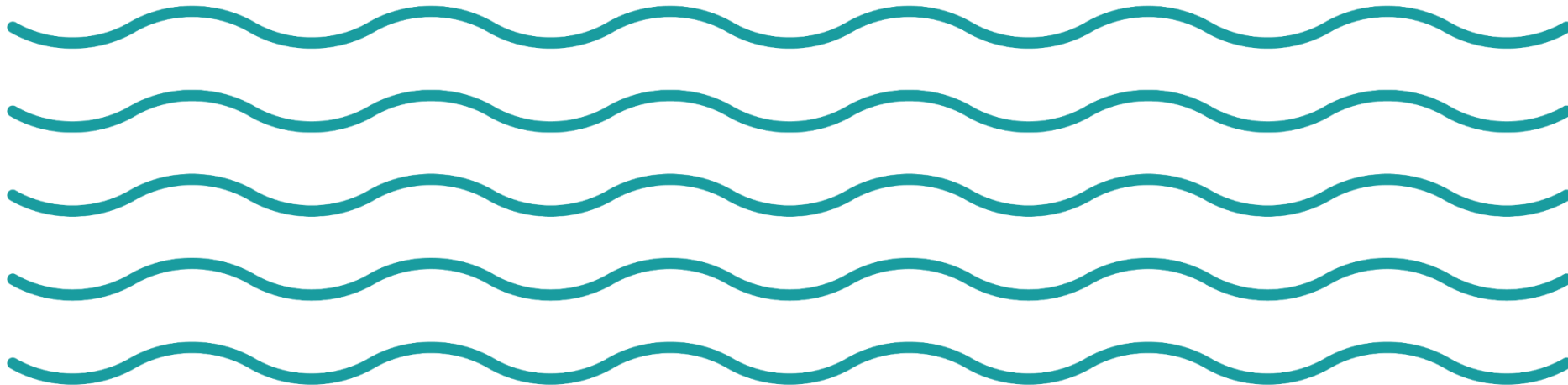
Review and update of the County's **critical areas regulations** using best available science.

Climate Change & Environment



Update **Transfer of Development Rights program** regulations to support conservation goals.

Continue to work on **clean water, healthy habitat,** and **land conservation goals**



King County Strategic Climate Action Plan

Act fast to reduce emissions

How much climate changes depends on how quickly we slow emissions. We are nearing critical thresholds for irreversible changes.

Address climate change equitably

Place those most impacted by climate change at the center of our decision-making.

Prepare for climate impacts

Past and ongoing emissions have locked in change – a question of how much, not if.

Key General Planning Scope Topics



- Update **transportation policies**
- Review **rural and natural resources** regulations
- **Subarea Planning** program actions
- **Land Use and Zoning** studies

General Planning



Adopt the **Snoqualmie Valley/Northeast King County** Community Service Area Subarea Plan, as well as implementing land use and zoning changes and development regulations. Topics covered include:

- land use and zoning, housing and human services, transportation, environment, open space and parks, services and utilities, and economic development.

Learn more at: <https://publicinput.com/SnoValleyNEKC>



KING COUNTY AGRICULTURE POLICIES IN THE COMPREHENSIVE PLAN



How to access, navigate, and interpret changes to the public review draft

<https://kingcounty.gov/~media/depts/executive/performance-strategy-budget/regional-planning/2024-KCCP-Update/PubRevDraft/01-2024-KCCP-PRD-060123.ashx?la=en>

Narrative →

Ctrl + f = search

Underlined text = proposed new language

Policy →

Comments provide rationale / background

Chapter and page →

((Double parentheses and strikethrough)) = proposed deletion

((R-640)) R-641e

Regional Collaboration on Wildfire Risk Reduction
Wildfire risk reduction benefits from ongoing opportunities to leverage resources and partnerships that support action around shared priorities and promote learning between organizations and subject matter experts. Partners includes local planners, first responders, natural resource managers, emergency management officials, and researchers.

Collaboration with small forest landowners and residents is also important. King County works in partnership with King Conservation District and Washington State University Extension Forestry to provide technical assistance to small forest landowners and residents related to wildfire mitigation. This includes providing education and technical training about forest management, working with forest landowners to develop and implement forest stewardship plans that account for climate change and wildfire risk, increasing access to cost-share programs that incentivize forest management, and hosting neighborhood-based workshops focused on identifying and acting on wildfire risks and community wildfire planning.

King County ~~((should continue to))~~ shall collaborate with key partners, such as the University of Washington, Washington State University including Extension, state and federal agencies, cities, first responders, and ~~((forest))~~ landowners, to improve forest resilience and reduce wildfire risks by:

a. ~~((monitor))~~ monitoring and ~~((evaluate))~~ evaluating impacts of climate change on forests and wildfire potential in King County

b. promoting species and structural diversity within and across forest stands in King County:

Commented [JC131]: Strengthens the policy while creating flexibility to work with partners beyond the listed partners.

Commented [JC132]: Updated to reflect current policy goals related to wildfire risk reduction

Rural Areas and Natural Resource Lands – Page 3-58



KC Comprehensive Plan agriculture policies

Chapter 3: Rural and Resource Areas

Section II. Rural Area Designation

Subsection B: Forestry and Agriculture in the Rural Area Geography

2. Farming

- Narrative revisions for brevity and clarity
- Adds language creating nexus with the King County Local Food Initiative
- *Should it also include in the narrative as a nexus with the*
 - *Land Conservation Initiative (LCI)*
 - *Strategic Climate Action Plan*
 - *And other Plans, such as Watershed Plans- FFF SVAPD Ag Land Resource Strategic Plan*
- R-209: proposed edit to clarify and reflect existing intent to "develop incentives to encourage agricultural activities on prime farmlands", not just "in the remaining prime farmlands."



KC Comprehensive Plan agriculture policies

Chapter 3: Rural and Resource Areas

Section VI. Natural Resource Lands

Subsection A. Ensuring Conservation and Sustainable Use of Resource Lands

- Narrative updates streamlining dated references
- R-602 [Agriculture Commission] updated to reflect current scope
- *See discussion slide if today's time allows*



KC Comprehensive Plan agriculture policies

Chapter 3: Rural and Resource Areas Section VI. Natural Resource Lands Subsection D. Agriculture

- Narrative updating data for acreage, eliminating redundancies, outdated text, technical corrections, matching existing intent and changes in terminology adopted in 2017 code
- Adds language creating nexus with the Land Conservation Initiative



KC Comprehensive Plan Ag policies

Chapter 3: Rural and Resource Areas Section VI. Natural Resource Lands Subsection D. Agriculture

- FFF policies
- Narrative: Suite of changes to address current status and future plans for Fish, Farm, Flood based on lessons learned coming out of the Snoqualmie Fish, Farm, Flood work.
- R-649: Updated with new balance of Fish, Farm, Flood needs based on planning processes and lessons learned to date. More details on how this will be implemented are in the updated R-650 below.
- R-650 New, required project review process that would be implemented with the adoption of the 2024 update
- R-650a Replaced with streamlined Snoqualmie Fish, Farm, Flood policy
- R-650b New policy about planning in other geographies



Best Available Science Updates

State law requires periodic review of Best available Science (BAS) to support Comprehensive Plan policies and implementing codes. Current BAS guidance strengthens requirements for “no net loss” of critical areas functions and values, and includes guidance related to protection of wetland and riparian areas.

KC is reviewing and updating BAS now and developing draft policy and code recommendations.

Anticipate that the county will be proposing code updates to reflect updated science, but that we also intend to sustain long-standing policy support for existing commercial agriculture. Plan to come back to Agriculture Commission soon with more information.

What's next? (Agriculture Commission)

- **Approximately 4 weeks for Agriculture Commission review; Patrice will coordinate review process and comment development.**
- **Formal comments to be discussed and approved during August 10 meeting.**
- **Comments must be submitted no later than August 25 for consideration of edits to the Executive Proposed Comp Plan.**



DISCUSSION and QUESTIONS...

Michael Murphy

DNRP Comprehensive Plan Liaison

Michael.Murphy@kingcounty.gov

206-477-4781

For Discussion: R-602, Ag Commission

~~((In 1994, the Agriculture Commission was established as a forum for farmers to take an active role in land use decisions, policies and regulations affecting commercial agriculture. The commission solicits input from agricultural agency technical advisors and others with land use and technical expertise, as well as other affected groups.))~~

Commented [JC91]: Streamlining dated references.

R-602

The Agriculture Commission shall advise the King County Executive and Council on ~~((agricultural issues and programs, including, but not limited to:~~

- a. ~~Existing and proposed legislation and regulations affecting commercial agriculture;~~
- b. ~~Land use issues that affect agriculture; and~~
- c. ~~Ways to maintain, enhance and promote agriculture and agricultural products in the region.))~~ programs, policies, regulations, and land use issues that affect agriculture, encourage retention of farmland, support farmland access for traditionally underserved communities, and contribute to a strong local food system. King County shall continue to support the Agriculture Commission with staff and other resources.

Commented [JC92]: Updated to reflect current scope



For Discussion: R-649, FFF

- Agriculture must remain the predominant use in any Agricultural Production District and aquatic habitat or floodplain restoration projects, as well as, King County mitigation reserves program projects shall not reduce the ability to farm in the Agricultural Production District.
- King County, through implementation of projects and programs, shall ensure sufficient land within Agricultural Production Districts remains available to support long term viability of **commercial agriculture** and that its programmatic and project actions support the maintenance or improvement of drainage and other agricultural support infrastructure. To the maximum extent practicable, King County should tailor measures to protect threatened or endangered species to support continued operation of **working farms** within the Agricultural Production Districts and should strive for outcomes consistent with goals King County may establish for optimal area of productive agricultural lands within the Agricultural Production Districts.