

PRIORITY HIRE ZIP CODES

King, Pierce, and Snohomish Counties

Zip Code Neighborhood or City		Zip Code	Neighborhood or City
		98106	Delridge
98001	Auburn	98107	Ballard
98002	Auburn	98108	S. Beacon Hill/South Park
98003	Federal Way	98109	Queen Anne
98007	Bellevue	98118	Rainier Valley/Rainier Beach
98023	Federal Way	98121	Belltown
98030	Kent	98122	Central District
98031	Kent	98125	Lake City
98032	Kent	98126	Delridge
98036	Lynnwood	98133	Bitter Lake
98037	Lynnwood	98134	Industrial District
98043	Mountlake Terrace	98144	Mount Baker
98047	Pacific	98146	White Center
98055	Renton	98148	Burien
98057	Renton	98168	SeaTac/Tukwila
98087	Lynnwood	98178	Rainier Beach
98092	Auburn	98188	SeaTac/Tukwila
98101	Downtown	98198	Des Moines
98102	Capitol Hill/Eastlake	98204	Everett
98103	Green Lake	98208	Everett
98104	Downtown/ID	98251	Gold Bar
98105	Laurelhurst/University District	98321	Buckley

King County Priority Hire Program



Finance & Business Operation Division
Business Development & Contract Compliance

King County's Priority Hire program improves access to employment and training programs for workers needing family-wages jobs, by supporting the hiring of residents who live in economically distressed areas of King County, and areas of Pierce and Snohomish counties that have King County rate payers.

Priority Hire Goals

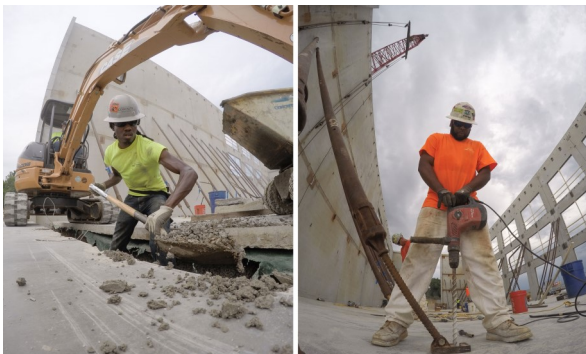
- ◆ Develop a diverse workforce
- ◆ Create economic growth in economically distressed areas for local workers
- ◆ Create pathways to construction careers
- ◆ Increase retention rates and broaden access to apprenticeships and family wage jobs for women and people of color
- ◆ Provide contractors access to a skilled workforce

Benefits

- ◆ Training and job opportunities in the construction industry for local residents needing family-wage jobs
- ◆ Assistance to Contractors in meeting their workforce needs
- ◆ Active efforts to address the gap between the expected supply and demand for construction workers in our region

Eligibility

- ◆ Individuals must reside in a Priority Hire ZIP code to be eligible



Project Requirements

- ◆ Requirements are established on a contract-by-contract basis
- ◆ Attend monthly Project Administrative Committee (PAC) meeting

Pre-Job Conferences

- ◆ CWA requirement that covers scope of work and workforce trade assignments
- ◆ Signed Letter of Assent

Workforce Requirements

- ◆ Hire Priority Hire workers and apprentices
- ◆ Hire Preferred Entry candidates from a recognized pre-apprenticeship program
- ◆ Dispatch all workers through union hiring halls
- ◆ Standard work hours and weekly pay days
- ◆ Use the King County CARTs online system to report

Wages and Trust Payments

- ◆ Wage rates and fringe benefits follow local Collective Bargaining Agreements
- ◆ Submit monthly trust remittance forms and hours

Bid Considerations

- ◆ Annual Wage Escalation
- ◆ Dual Benefit Payments (Open Shop Contractors)
- ◆ Administrative Support (Prime Contractors)

For additional information

Contact:

Samantha Kealoha

Labor Equity Program Manager

(206) 263-5856

Skealoha@kingcounty.gov