

SNOQUALMIE VALLEY
AGRICULTURAL
STRATEGIC PLAN

November 2023

SVAPD Agriculture Task Force

Ag Strategic Plan Overview & Completion: Adoption by Task Force Member Entities

Abstract

The SVAPD Agriculture Task Force, made up of farmers and industry professionals in the commercial farm sector drafted the plan over four years to elevate the land resource needs for farmers in the SVAPD, policy makers and service providers alike, to understand the agriculture needs based on facts, implement the solutions, and gain the results needed in the next 25 years. From drainage to climate change to farmland preservation, this plan has 17 short issue papers and 283 strategies to achieve the desired condition for each issue.

Ag Strategic Plan Task Force

King County Agriculture Commission Mtg

1.11.24

Adoption of the Plan

1. The plan reflects the needs of the agriculture sector in the Snoqualmie APD
2. Support for and utilization of the plan to raise awareness of agriculture (see Plan purpose)
3. Implementation of the plan related to items connected with the entity/service provider
 - a) In this regard, it may be that the Commission supports and/or prompts implementation for County actions through advisory letters

Task Force Members & Affiliation

Members	Affiliation
Janet Keller, Jordan Jobe, Carrie King	King County Agriculture Commission
Andrew Stout, Erin Ericson	Snoqualmie Valley Watershed Improvement District (SVWID)
Janet Keller, Lauren Silver	Snoqualmie Valley Preservation Alliance (SVPA)
Libby Reed, Dave Glenn	SnoValley Tilth
Bobbi Lindemulder	Fish, Farm, Flood Implementation Oversight Committee
Carrie King	King Conservation District
Jordan Jobe	WSU CSANR, Puyallup Research Center
<u>Patrice Barrentine, Coordinator</u>	King County Water & Land Resources Division (KC WLRD)

April – Nov 2023

Public Review
Draft

Actions and
Outreach
Accomplished

Outreach

1. Sent out Social Media messages for posting and advertising the plan with paid ad
2. Sent out emails to all partner lists on May 4

Outreach Actions/Events

1. Presentation to KCD Staff, May 2, 9-10 – Libby and Patrice
2. Parks and WLRD management, May 2, 3-4 -Erin and Patrice
3. Sno/Sky Staff May 8, Patrice
4. LFI Newsletter Interview – Bobbi and Lauren, Patrice
5. Tuesday 10-12, Thursday 9-3, and Friday 9-11
6. Ag Commission, May 11
7. FYI Briefing KC DNRP Director Christie True, May 16, 1:30-2 – Lauren and Patrice
8. SVT/SVPA – EFP at Snoq River Farm, May 22
9. Interview with Conor Wilson, Valley Record, (no print yet), May 23 - Libby and Patrice
10. KCD Board of Supervisors, June 5, 5-7pm – Patrice (& Libby tried)


~100 specific
Comments

from ~25
people/entities

+ in-person Q&A

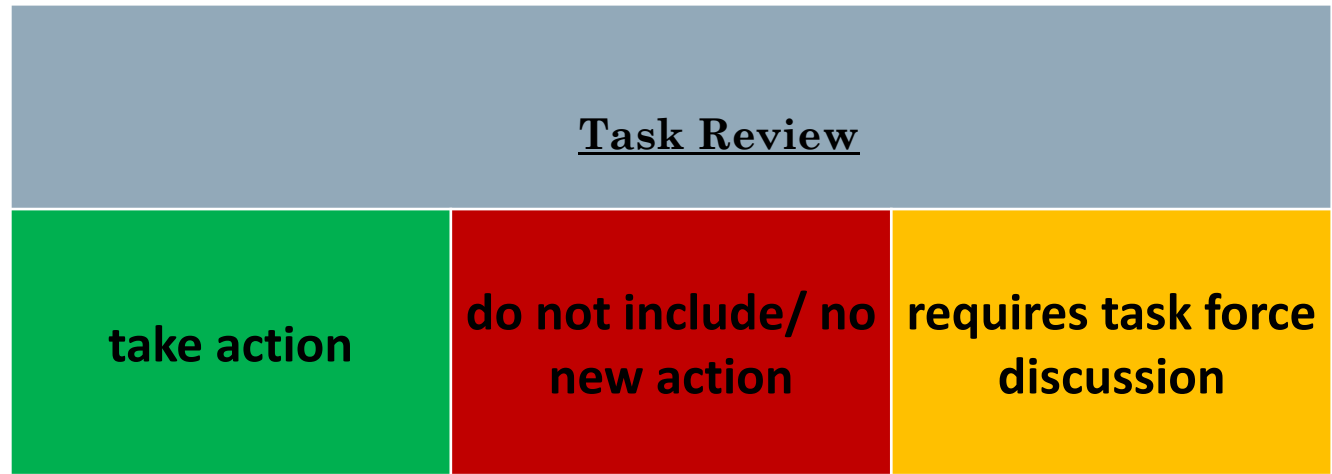
Methods of input

- Survey: none
- Email: ~20
- Mtg: 3
- Events: Ag Commission and SVT & SVPA's Farm Open House



Comments from
farmers, task force
entities, subject
matter experts, the
Snoqualmie Tribe,
The Tulalip Tribes,
KC Roads, FFF
Fish Caucus

All comments were reviewed, decided upon & then selected comments incorporated from July-November



Changes include:
text, maps, tables,
appendices,
& commitment for
adding an Aquatic
Species issue paper



improve the long-term productivity of farmland



bring more acres into production, especially food production,



increase opportunities for farmers to develop the necessary infrastructure to support or increase their farm businesses



proposed acreage needs for long-term, viable sector

Purpose



assessment of specific farmland
resource property needs and
assets in the SVAPD



create an implementation plan
for project improvements to land
(e.g., drainage) and water access

Method

Appendix G

Table G: Sub-goals and Issue Papers by Priority Ranking of Importance

Sub-goals and Issue Papers	Priority Ranking of Importance
A1. Profile of the Commercial Agriculture Sector	High
1. Improved Farmland Productivity	
1.1 Drainage	High
1.1.1 Drainage Maintenance for ADAP Eligible Waterways	High
1.1.2 Drain Tiles	Medium/High
1.1.3 Flap gates, Floodgates, and Pumps	Medium/High
1.1.4 Culverts	High
1.1.5 Drainage Maintenance for non-ADAP Waterways	Medium/High
1.1.6 Beavers	High
1.2 Flood Safety	High
1.2.7 High Ground Refuge and Farm Pads	High
1.2.8 Home Preservation in the APD	High
1.3 Irrigation	High
1.3.9 Water Rights and Irrigation	High
1.4 Transportation	Medium
1.4.10 Revetments	Medium
1.4.11 Transportation Corridors and Bridges	Medium
1.5 Climate Change	Medium
1.5.12 Climate Change Predictions	High
1.5.13 Invasive Species	Medium/Low
2. Increased Farmland Protections	
2.1 Population Growth and Development Impacts	Medium
2.1.14 Population Pressure	Medium
2.2 Wildlife	High
1.1.6 Beavers	High
2.2.15 Elk and Deer	High
2.2.16 Fish and Habitat Recovery	High
2.3 Farmland Preservation	High
2.3.17 Farmland Preservation	High
2.4 Proposed acreage for a long-term, viable sector	High
2.4.18 Acreage Challenges, Needs and Recommendation	High

High Priorities include the majority of Drainage, Flood Safety, Irrigation, Climate Change, Wildlife, Farmland Preservation and Acreage Recommendation.



Appendix E

Table E: Issue Papers by Organization/Agency Strategic Plans, Missions, Programs

	King County Strategic Plans							Organization/Agency Strategic Plans, Missions, Programs						
	Comprehensive Plan & NEKC	Equity and Social Justice Strategic Plan	Farm, Fish, Flood 1.0	Flood Hazard Management Plan	Land Conservation Initiative	Local Food Initiative	Strategic Climate Action Plan	Beavers NW	King Conservation District	King County Agriculture Commission	Snohomish Conservation District's Agriculture Resiliency Plan	Snoqualmie Valley Preservation Alliance (SVPA)	Snoqualmie Valley Watershed Improvement District (SVWID) / Wetness Prioritization Plan	SnoValley Tith
A1. Profile of the Commercial Agriculture Sector	x	x				x			x			x	x	
1. Improved Farmland Productivity														
1.1 Drainage														
1.1.1 Drainage Maintenance for ADAP Eligible Waterways			x			x			x			x		
1.1.2 Drain Tiles			x						x	x		x		
1.1.3 Flap gates, Floodgates, and Pumps			x						x			x		
1.1.4 Culverts			x						x	x		x		
1.1.5 Drainage Maintenance for non-ADAP Waterways									x	x		x		
1.1.6 Beavers			x				x		x			x	x	
1.2 Flood Safety														
1.2.7 High Ground Refuge and Farm Pads			x	x					x	x		x	x	
1.2.8 Home Preservation in the APD	x	x	x			x			x			x		
1.3 Irrigation														
1.3.9 Water Rights and Irrigation	x								x	x		x	x	
1.4 Transportation														
1.4.10 Revetments			x						x					
1.4.11 Transportation Corridors and Bridges									x		x			
1.5 Climate Change														
1.5.12 Climate Change Predictions	x					x			x	x	x	x		
1.5.13 Invasive Species									x	x				
2. Increased Farmland Protections														
2.1 Population Growth and Development Impacts														
2.1.14 Population Pressure	x								x				x	
2.2 Wildlife														
1.1.6 Beavers			x				x		x			x	x	
2.2.15 Elk and Deer							x	x	x					
2.3 Farmland Preservation														
2.3.16 Farmland Preservation	x	x		x	x				x		x	x	x	
2.4 Proposed acreage for a long-term, viable sector														
2.4.17 Acreage Challenges, Needs and Recommendation	x	x	x		x	x		x	x	x	x	x	x	

The plan has important links to and works to support other plans, programs, organizations, and agencies including:

- King County Plans
 - Comprehensive Plan and NEKC
 - Farm Fish Flood 1.0
 - Flood Hazard Management Plan
 - Local Food Initiative
 - Land Conservation Initiative
 - Strategic Climate Action Plan
- King Conservation District
- Snohomish Conservation District Ag Resiliency Plan
- SVWID

Appendix F

Table F: Strategies by Key Values and Themes

Strategy #	Strategy is located in the following issue paper(s) by number	Individual Strategies grouped in 5 categories: Farmland Infrastructure and Productivity: strategies for specific improvements to the land resource for agriculture Education, Outreach, Technical and Financial Assistance (cost-share): strategies for any of these components Water Storage: strategies to manage flood waters for increased summer flows for fish and crop irrigation Policy: strategies to change policy or code Planning, Studies and Collaboration: strategies for planning, studies and partnerships to accomplish goals	1. Responsible stewardship/sustainable farming	2. Flood and climate change preparedness	3. Equity and social justice	4. Multi-benefit projects	5. Innovative thinking	6. Regulatory certainty	7. Resource investments	8. Alignment with related plans and programs
		Farmland Infrastructure and Productivity								
1	1.1.1	Complete initial maintenance and establish recurring maintenance intervals on remaining 73 miles of unmaintained waterways within 10 years, which is a 3- to 4-fold increase over recent rates of maintenance.	x							
2	1.1.1	Secure stable funding of approximately \$2 million per year from King County and project partners to achieve increased rate of maintenance.	x						x	
5	1.1.1	Conduct maintenance through SVWID's priority basin or emergency needs rather than first come, first serve basis.			x					x
6	1.1.1	While undergoing maintenance, waterways are assessed and scheduled for follow-up maintenance; not all waterways need to be maintained at the same frequency.	x							
7	1.1.1	Expand ADAP's fish and water quality capacity to match increased pace and timeline.				x			x	
8	1.1.1	Add alternative mitigation strategies for required plantings to ADAP agreement.					x			
10	1.1.2	Secure long-term funding for service providers to purchase equipment for drainage tile installation.							x	x
11	1.1.3	Use sub-basin hydrological analysis to identify key points and strategic locations for gate repair and pump installation.					x			

For searchability by the 8 key values and themes, all strategies are grouped in an additional 5 categories:

- 1) Farmland Infrastructure and Productivity
- 2) Education, Outreach, Technical and Financial Assistance (cost-share)
- 3) Water Storage
- 4) Policy
- 5) Planning, Studies and Collaboration

Acreage

1. Increase infrastructure improvements and protections

Increase the productivity of **8,668 farmable acres** through infrastructure improvements and protections **as captured in strategies and timelines within Issue Papers 1-18** in the Plan

18 Issue Papers



Improve Farmland Productivity

- A. Introduction and Profile of the Commercial Agriculture Sector in the SVAPD
- 1. Waterway Maintenance – ADAP eligible
- 2. Agricultural Drainage Tiles
- 3. Flap/Flood Control Gates and Pumps
- 4. Culverts
- 5. Waterway Maintenance – non-ADAP eligible
- 6. Beavers
- 7. Farm Pads and High Ground Refuge
- 8. Home Preservation
- 9. Water Rights and Irrigation
- 10. Revetments
- 11. Transportation
- 12. Invasive Species
- 13. Climate Change



Increase Farmland Protections

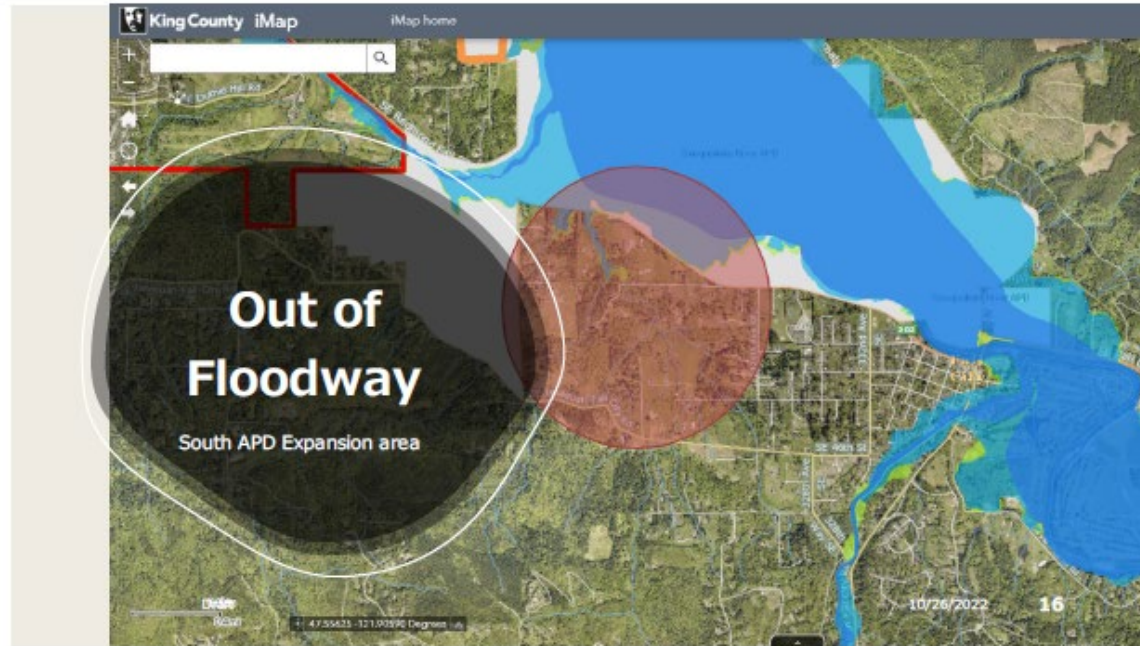
- 14. Population Pressure
- 15. Elk and Deer
- 16. Aquatic Species**
- 17. Farmland Preservation
- 18. Acreage

Acreage

2. Expand the APD

Expand the APD to the Southwest by 278 farmable acres to preserve additional farmable land and valuable habitat

Figure 50. Proposed South SVAPD Expansion Area. General farmable area outside of the floodway recommended for expanding the APD.

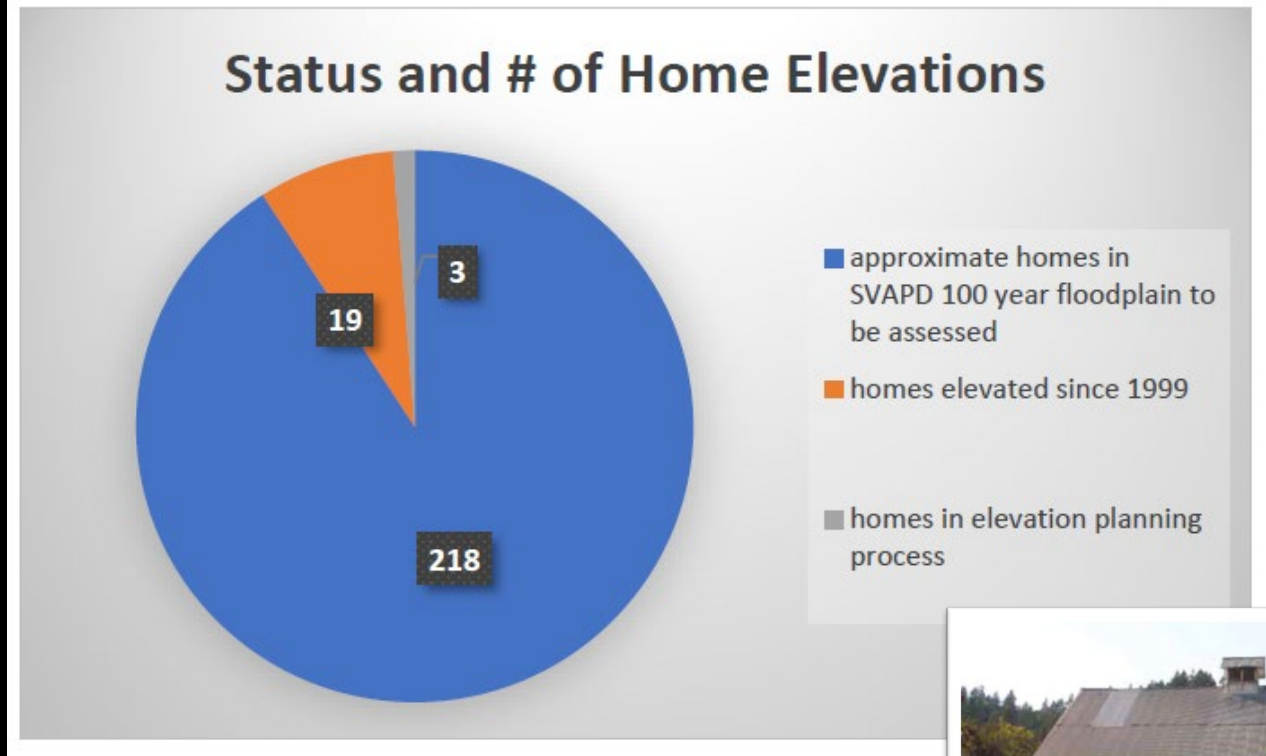


Acreage

3. Gain Regulatory Relief

Gain Regulatory Relief to permit more agricultural infrastructure improvements on farmable land while quickening the pace and lowering the cost.

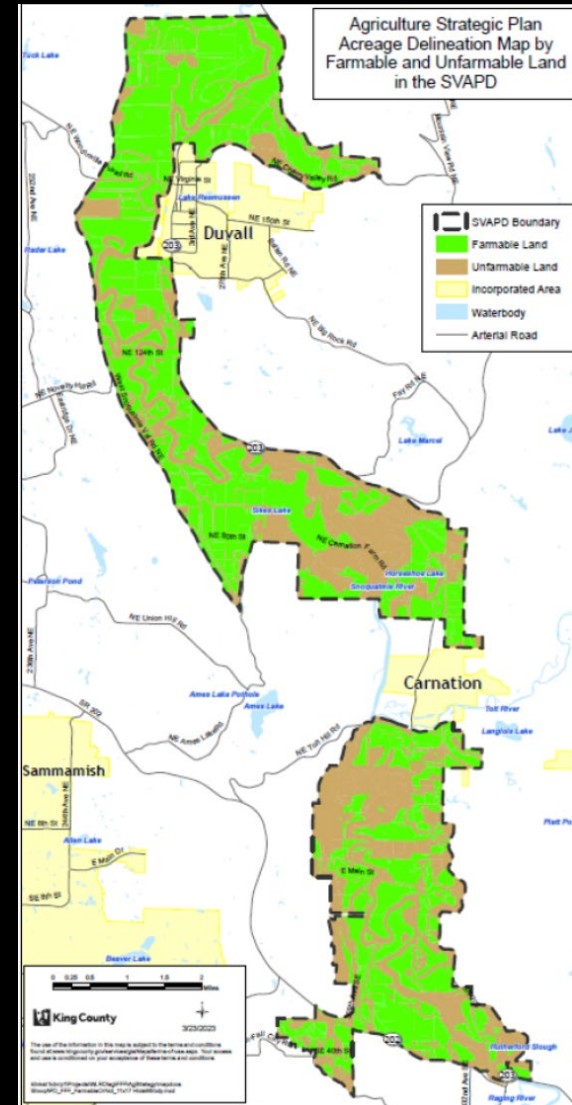
Figure 17. Status and # of Home Elevations to Date



Acreage

4. Ensure Predominant use of agriculture

Ensure predominant use of agriculture in the SVAPD by protecting at least 7,696 farmable acres to be permanently preserved within the next 25 years to and long-term, commercial agriculture viability in the SVAPD.

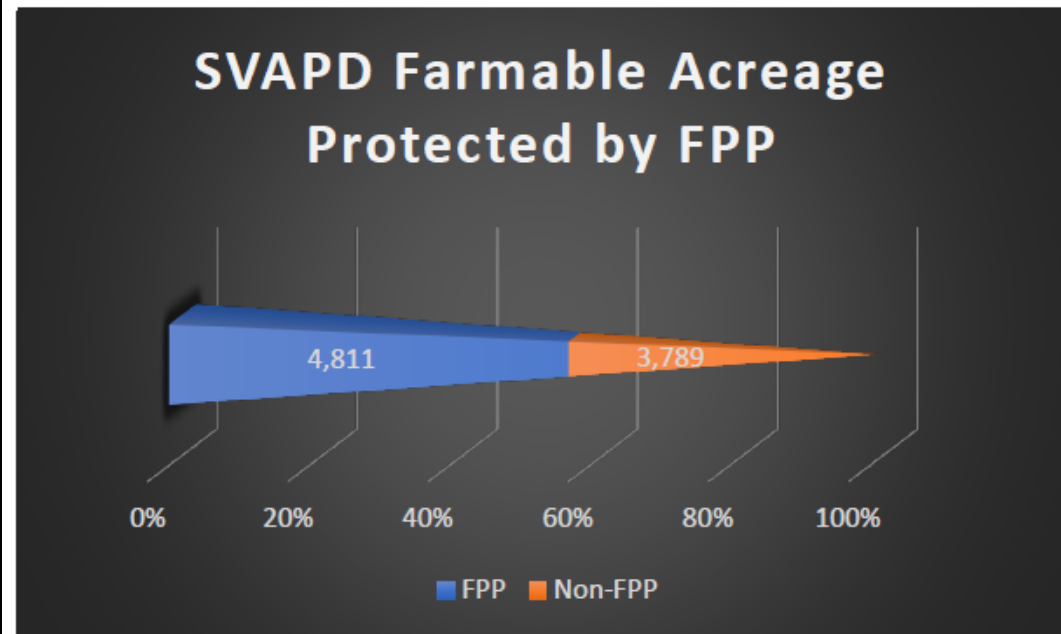


Acreage

5. Target 3,789 acres FPP deeds

Target eligible 3,789 farmable acres currently unprotected by FPP with King County's Farmland Preservation Program deed.

Figure 43. Farmland Preservation Program: SVAPD Farmable Acreage Permanently Protected



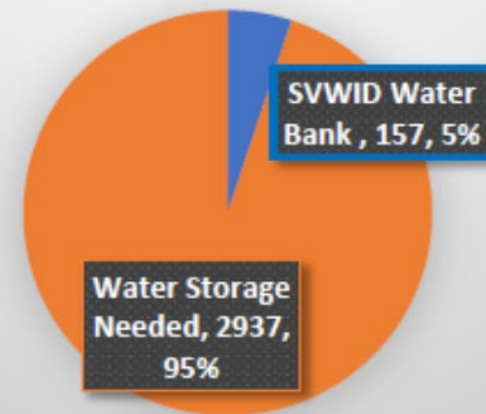
Multi-Benefit Example

Multi-Benefit Water Storage

- Advocate and gain political support with FEMA, Tribes, WA Dept of Ecology, WA Fish and Wildlife, WSDA, KC WLRD, KC Council Members, King Conservation District, WA Conservation Commission, and others to accomplish multi-benefit water storage as related to climate change and irrigation needs

Figure 25. Projected Water Supply Needed to Meet 3,250 AF

Projected Water Supply Needed to Meet 3,250 AF
(to irrigate 6,500 acres without water rights)

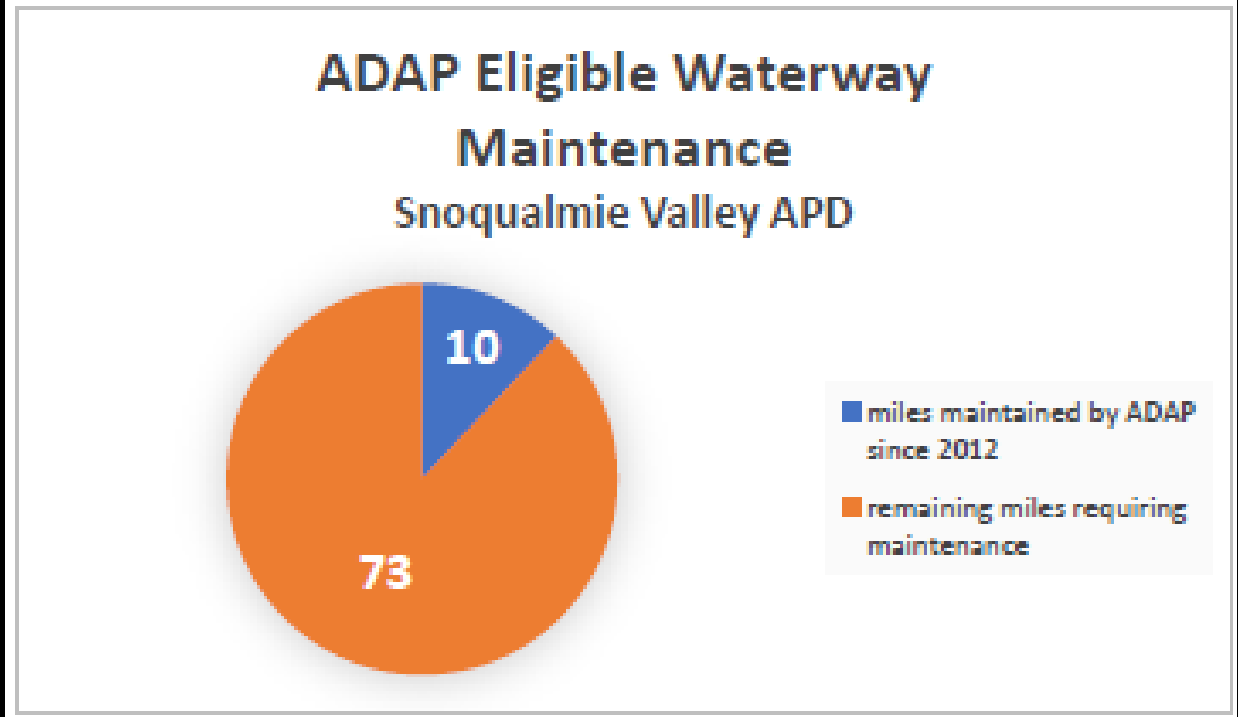


Multi-Benefit Example

Multi-Benefit Waterway Maintenance and Plantings

- *An estimated 264 acres of mature habitat could be planted in partnership with the agriculture sector's drainage priorities and timeline in the next 10 years.*
- *That equates to nearly a third of the Buffer Task Force goal of 950 acres in 25 years.*

Figure 2. ADAP Eligible Waterway Maintenance: Snoqualmie Valley APD



What's Next?

- January Adoption of the Plan by Task Force Member Entities
- January IOC Transmittal Letter to the Executive
 - Conveying completion of the Ag Task Force Scope and Plan
 - Recommending some key strategies/components of the Plan be implemented
- Plan implementation balanced with other Fs
- IOC takes up the BTF and ATF acreage recommendations and finalizes them



Questions?

We can solve this.

We're not powerless.

Here's what we can
do and make
happen.