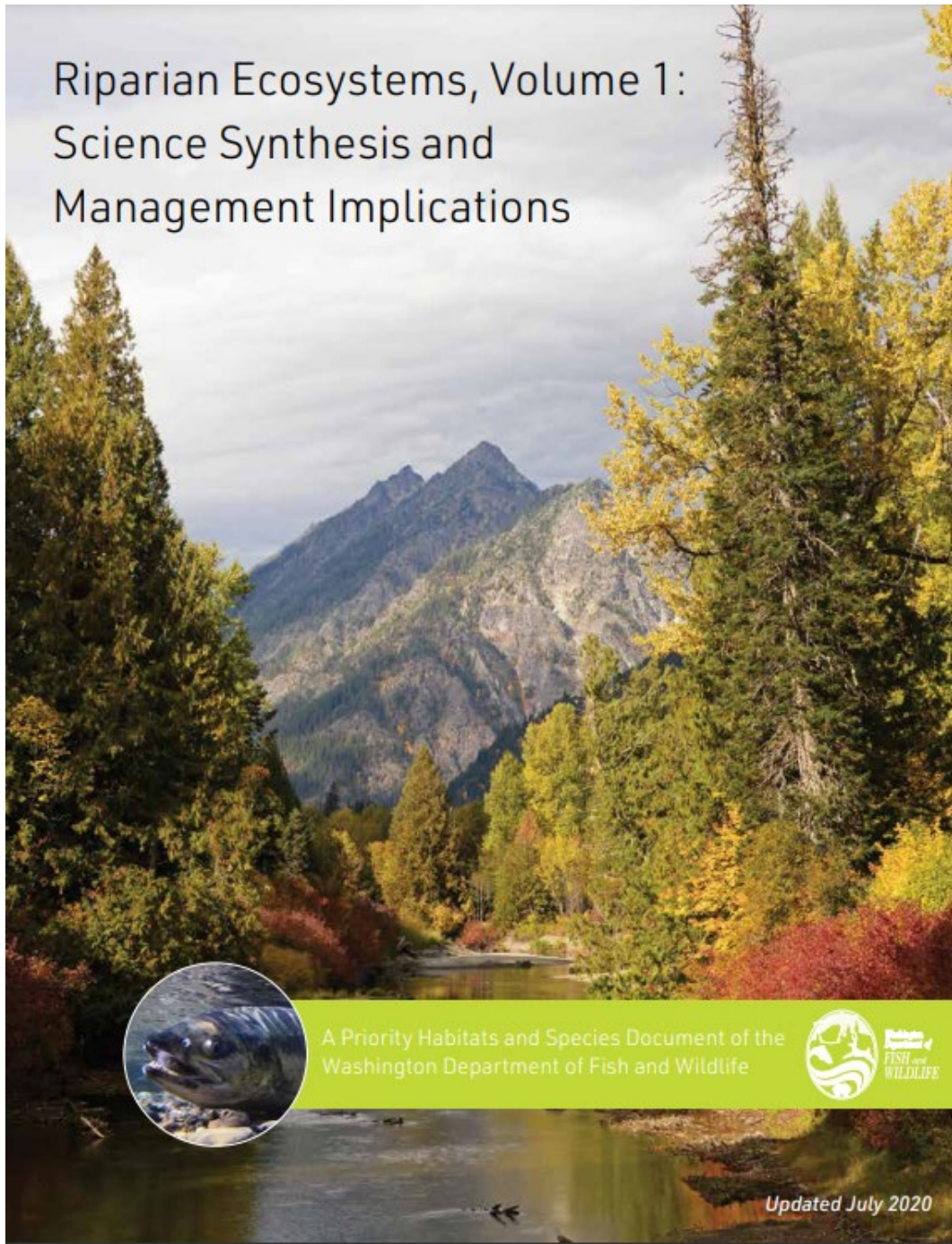


Updates on Best
Available Science
(BAS) and the
Livestock
Management
Ordinance (LMO)



Riparian Ecosystems, Volume 1: Science Synthesis and Management Implications

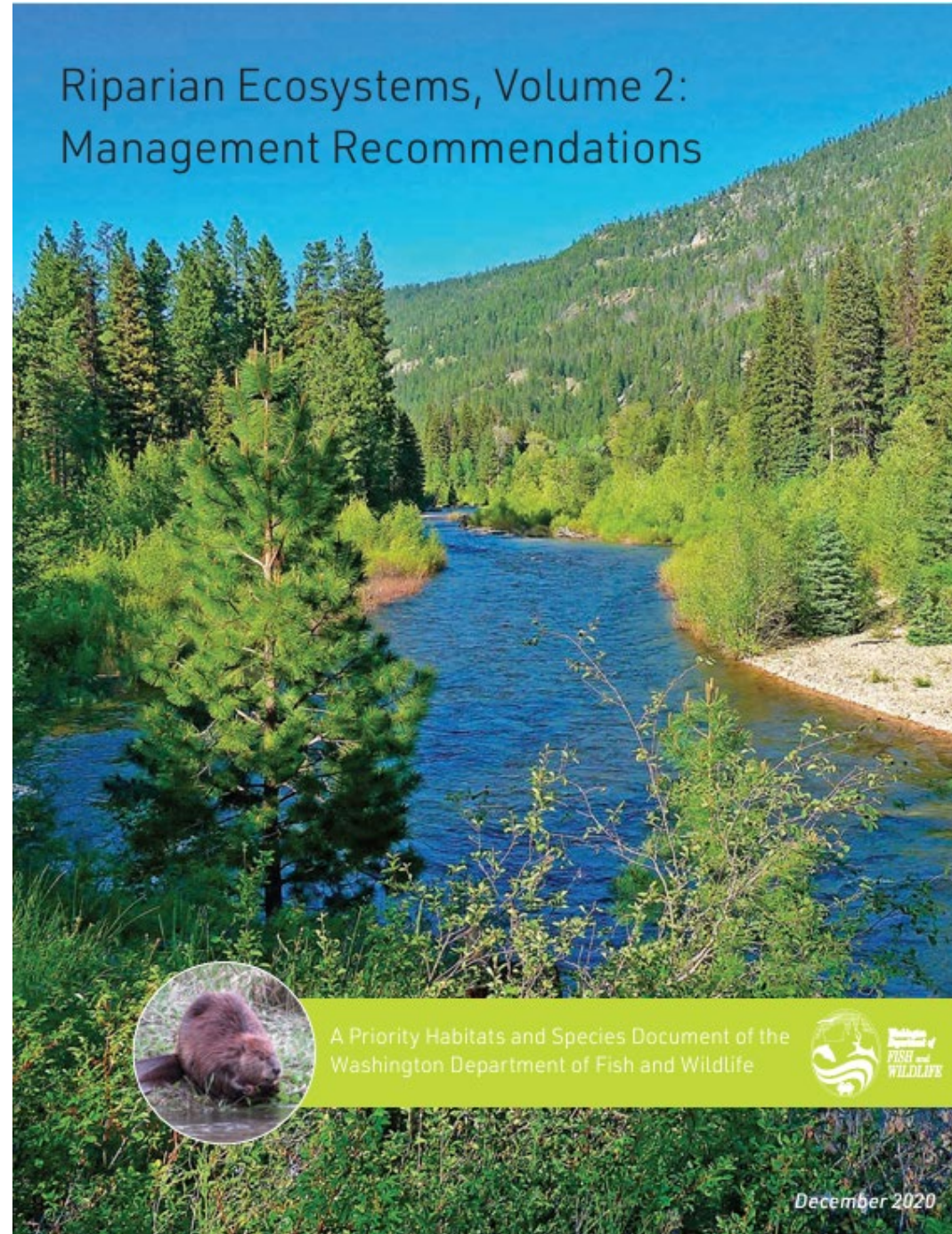


A Priority Habitats and Species Document of the
Washington Department of Fish and Wildlife



Updated July 2020

Riparian Ecosystems, Volume 2: Management Recommendations

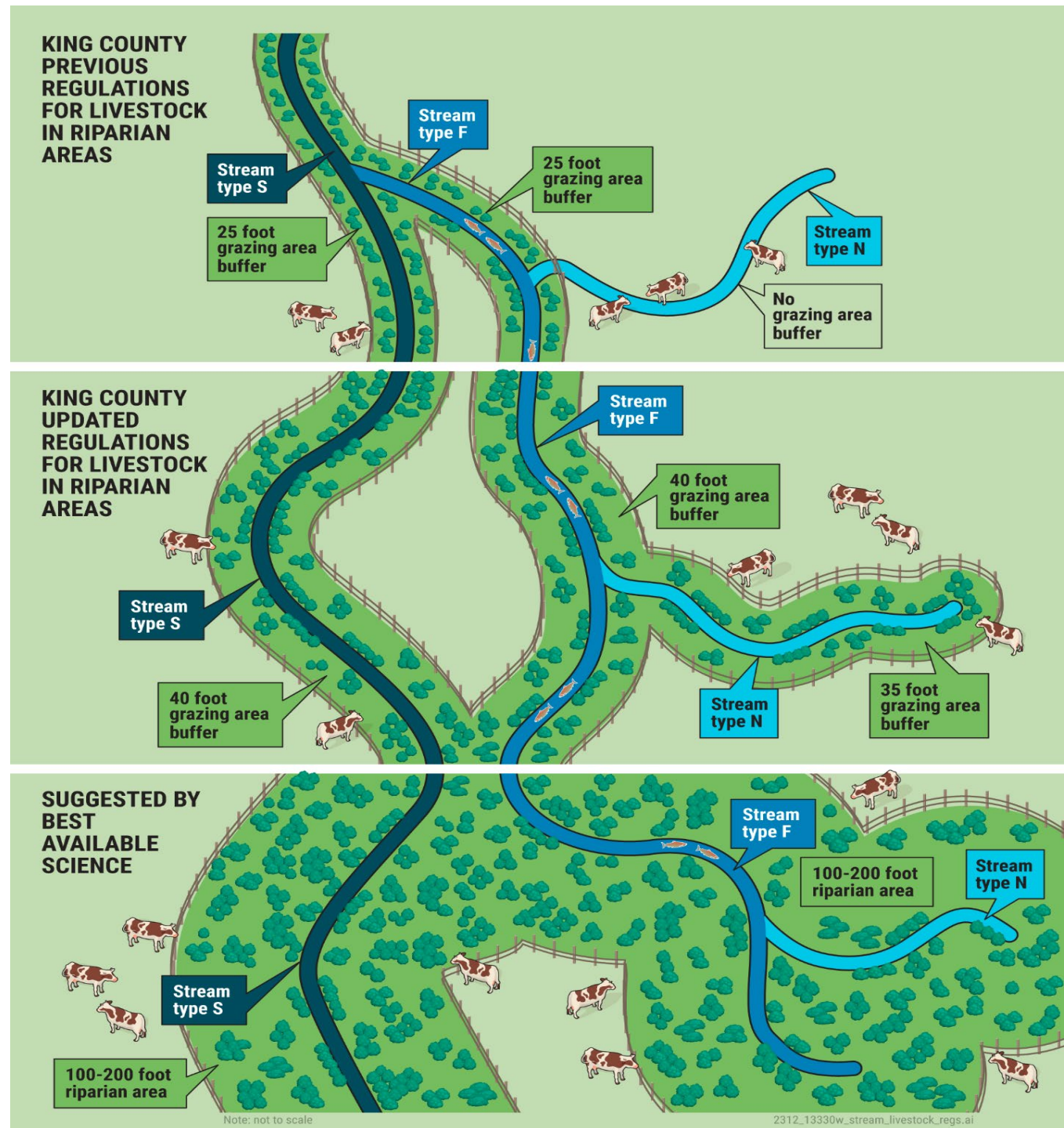


A Priority Habitats and Species Document of the
Washington Department of Fish and Wildlife



December 2020

“Water quality was recently evaluated for a limited number of agricultural streams and showed that water quality in these streams is more degraded than streams associated with other land uses (King County 2023b). This higher degradation is associated with higher nutrients and fecal coliform concentrations.”



Current Grazing Area Buffer Setbacks and WA Department of Fish and Wildlife BAS Recommendation

Critical Area Type	Grazing Area Buffer Width (ft)		
	Current Requirement With Farm Plan or Existing Mature Vegetation	Current Requirement Without Farm Plan	WDFW BAS Recommendation
Shoreline (S) or Fish Bearing (F) Aquatic Area and Category I, II or III Wetlands	25 ¹	50	200
Non-fish Bearing (N) and	0 ²	0 ²	100 -200
Category IV Wetlands	-	-	40 - 50
Other (O)	0 ²	0 ²	100 - 200

¹Livestock Management Ordinance offers pathway for smaller buffer if mutually agreed upon by King Conservation District and King County

²Manure can't accumulate within 10 feet

Current and Proposed Grazing Area Buffer Widths with and without a Farm Conservation Plan

	Grazing Area Buffer Width (ft)			
Aquatic Area Type	With Approved Farm Plan (achieve diverse, mature vegetation)		Without Approved Farm Plan	
	Current	Proposed	Current	Proposed
Shoreline (S) or Fish Bearing (F) Aquatic Area and Category I, II or III Wetlands	25	40	50	50
Non-fish Bearing (N)	0	35*	0	50
Category IV Wetland	-	20	-	25
Other (O)	0	0	0	0

* Would require some form of exclusion, likely fencing

Hypothetical assessment of potential impacts

- Selected four King County-owned farms
- Used existing waterway classifications; likely that not all waterways are typed correctly
- Overlaid 25-, 40-, 50-, 100-, and 200-foot buffers on Type S and F waterways
- Overlaid 35- foot buffers on Type N waterways
- Two farms with only Type N waterways, one farm with a complex of Type F and N waterways, one farm, with Type S and F waterways

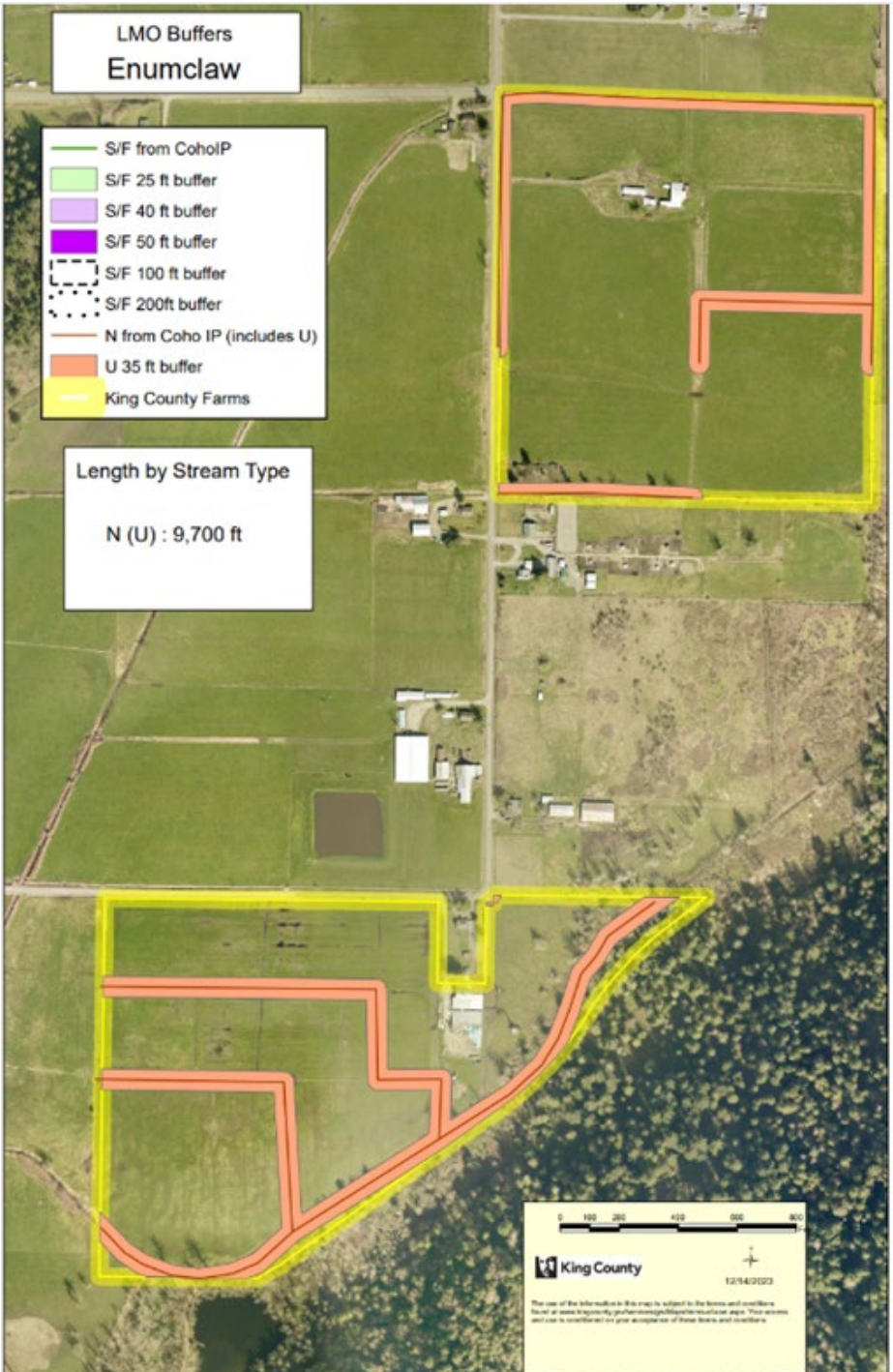


LMO Buffers
Enumclaw

- S/F from CohoIP
- S/F 25 ft buffer
- S/F 40 ft buffer
- S/F 50 ft buffer
- S/F 100 ft buffer
- S/F 200ft buffer
- N from Coho IP (includes U)
- U 35 ft buffer
- King County Farms

Length by Stream Type

N (U) : 9,700 ft



0 100 200 400 600 800

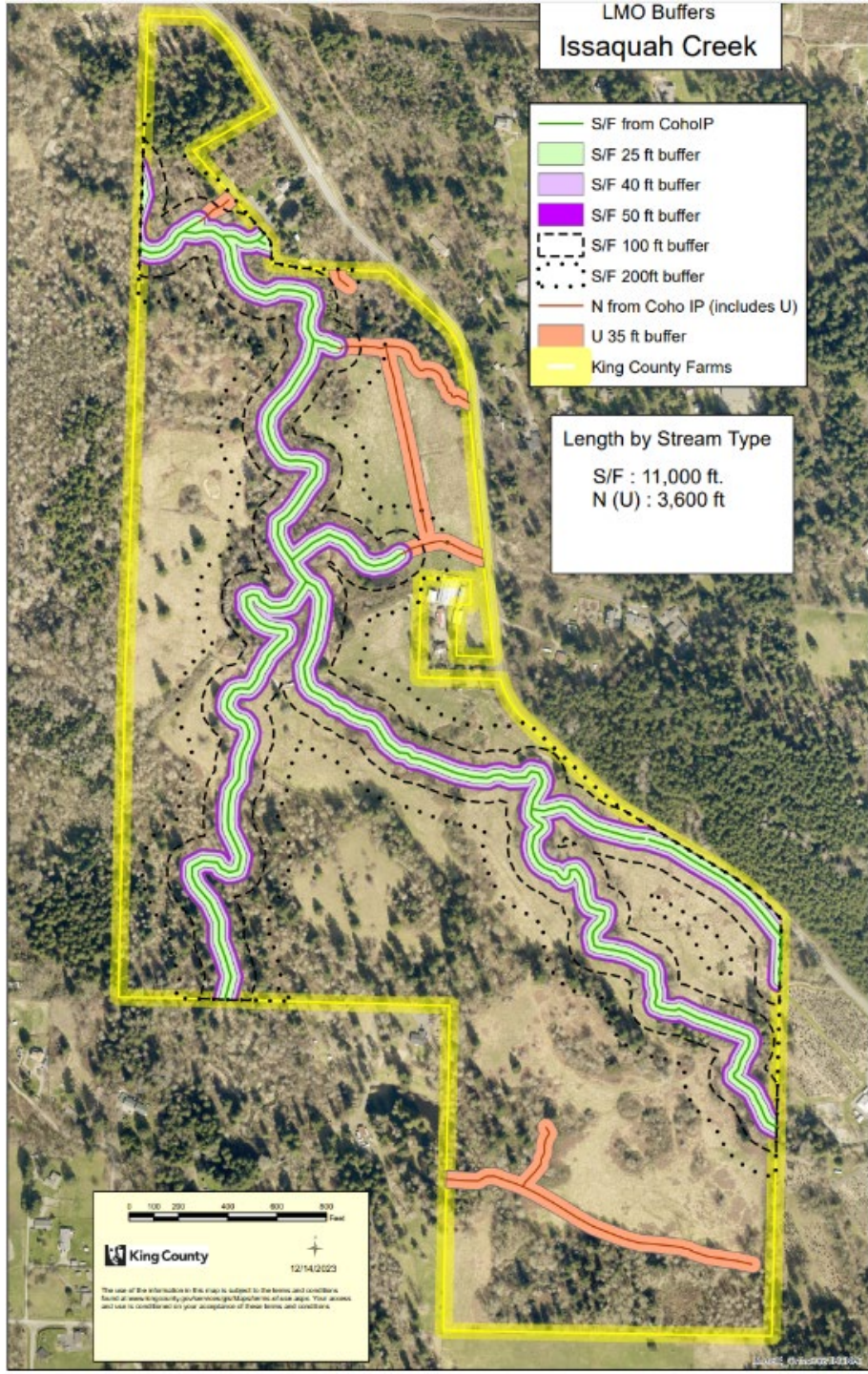
King County 12/14/2023

The use of the data made available in this map is subject to the terms and conditions of the data provider. The accuracy of the data is not guaranteed. This system and user is responsible for any application of these data and results.

LMO Buffers Issaquah Creek

- S/F from CohoIP
- S/F 25 ft buffer
- S/F 40 ft buffer
- S/F 50 ft buffer
- S/F 100 ft buffer
- S/F 200ft buffer
- N from Coho IP (includes U)
- U 35 ft buffer
- King County Farms

Length by Stream Type
S/F : 11,000 ft.
N (U) : 3,600 ft



0 100 200 400 800 Feet

King County

12/14/2023


The use of this information in this map is subject to the terms and conditions of the license agreement. The information is provided for informational purposes only and does not constitute a warranty. The accuracy and use is considered at your own risk and discretion.

LMO Buffers
Snoqualmie

Length by Stream Type
Streams S/F : 2,600 ft
Mainstem S/F : 3,100 ft

- S/F from CohoIP
- S/F Snoq Mainstem
- S/F 25 ft buffer
- S/F 40 ft buffer
- S/F 50 ft buffer
- S/F 100 ft buffer
- S/F 200ft buffer
- N from Coho IP (includes U)
- U 35 ft buffer
- King County Farms

0 100 200 400 600 Feet

 King County

12/14/2023

The use of the information in this map is subject to the terms and conditions found at www.kingcounty.gov/services/gis/maps/terms-of-use.aspx. Your access and use is conditioned on your acceptance of these terms and conditions.

Requirements to establish and maintain buffers:

Fence buffers to exclude livestock

Management within buffer

Rick Reinlasoder

Livestock Program Specialist

rick.reinlasoder@kingcounty.gov

(206) 477-4810