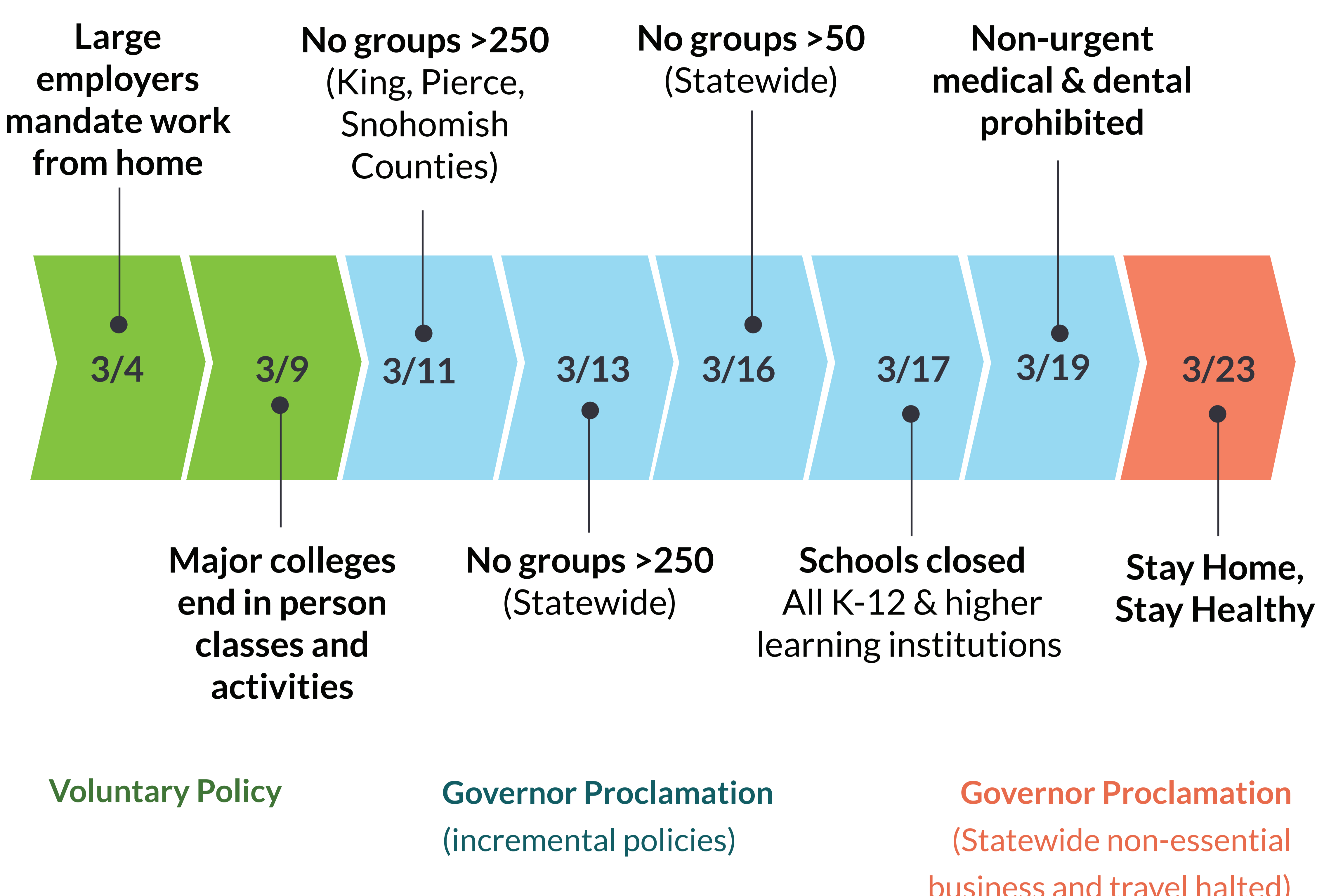


# CHANGES IN HOW WE MOVE AROUND

Economic, Social and Overall Health Impacts:  
Changes in transportation patterns follow community mitigation policies

King County, WA  
February - May, 2020

## Policy Implementation Timeline



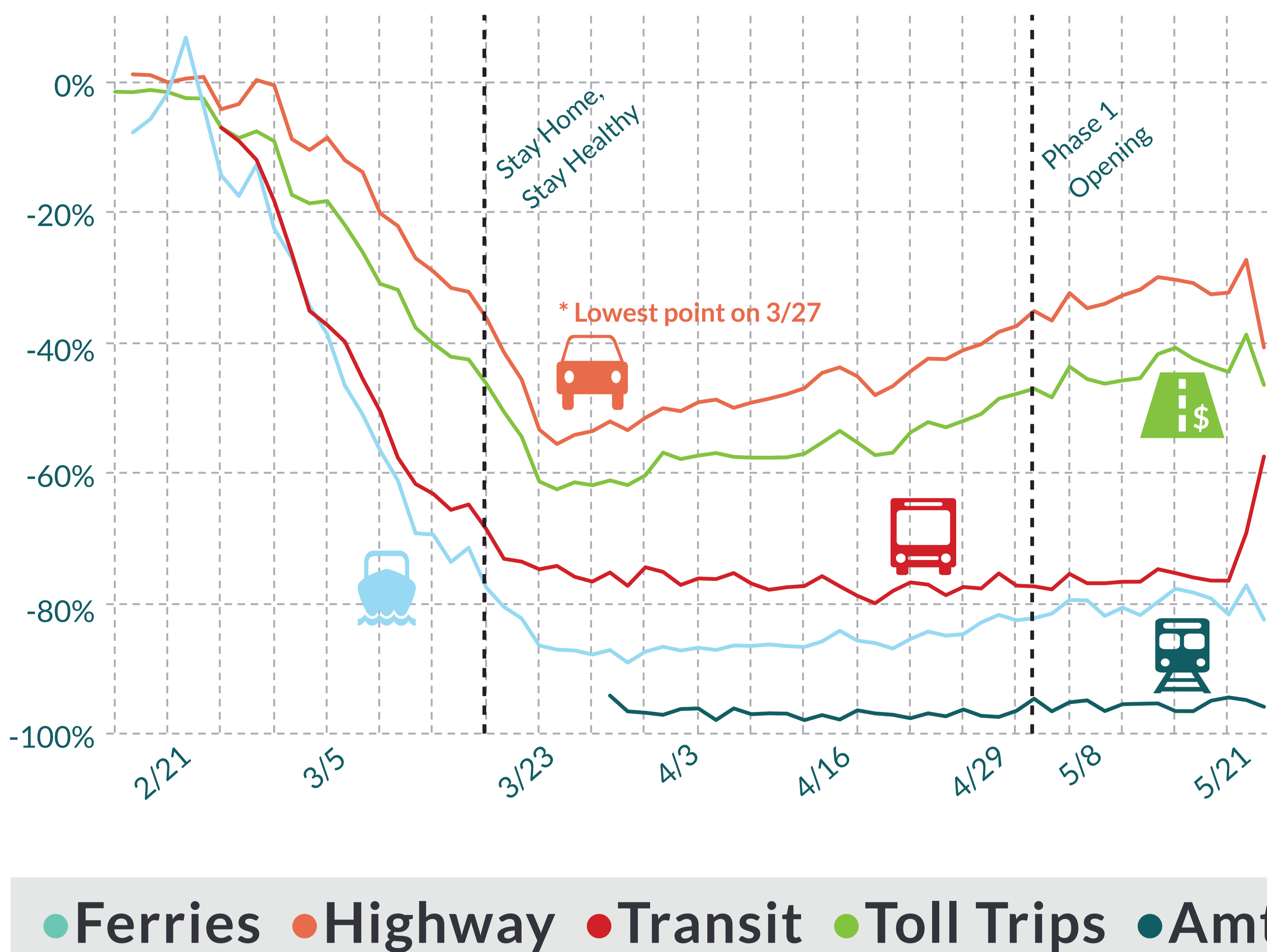
Highway traffic volumes fell dramatically following voluntary and state ordered policies to stay/work from home

**56%**  
decline on weekdays

**67%**  
decline on weekends

Then gradually increased through April and May

Daily traffic percentage change from 2019



**74%**

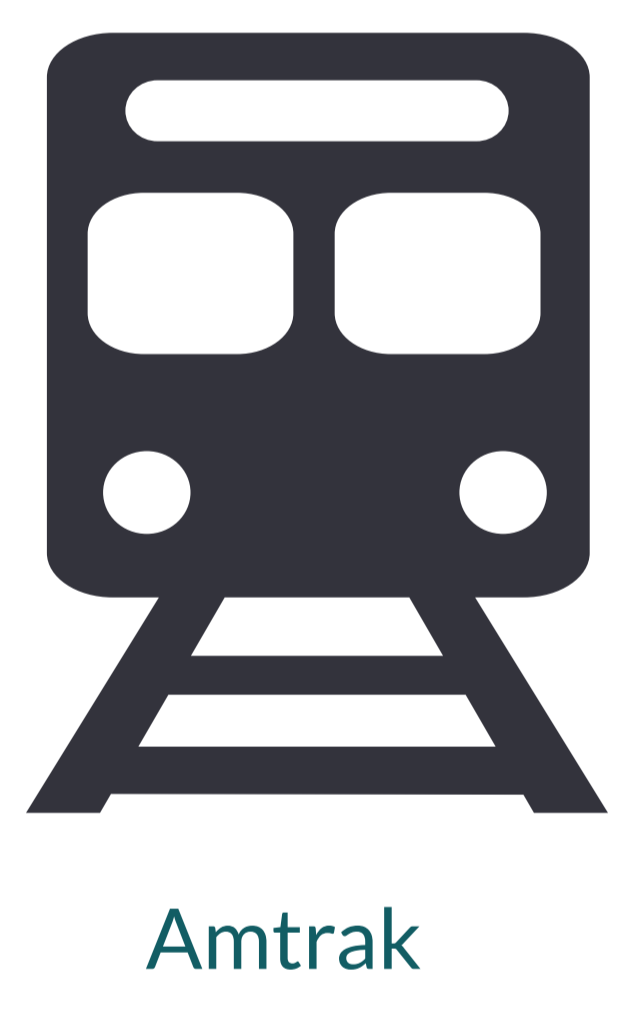
**97%**

**87%**

Ridership on public transit fell dramatically in early March from 2019



Metro, Sound Transit, Community Transit



Amtrak



WA State Ferries

## All highways saw declines

**Greatest** decline on SR-520, which remains low

**167**

**520**

**Smallest** decline on SR-167 which is almost back at baseline

**37%**

**78%**

Neighborhood trail use is steady or higher than usual



## motor vehicle crashes declined

The number of fatal crashes remain similar to April 2019 levels (statewide data)

**38**

Motor vehicle crashes in March fell by 22% compared to 2019

**37%**

Motor vehicle crashes April fell by 55% compared to 2019

**62%**

