

Howard Hanson Dam Update

Seattle District

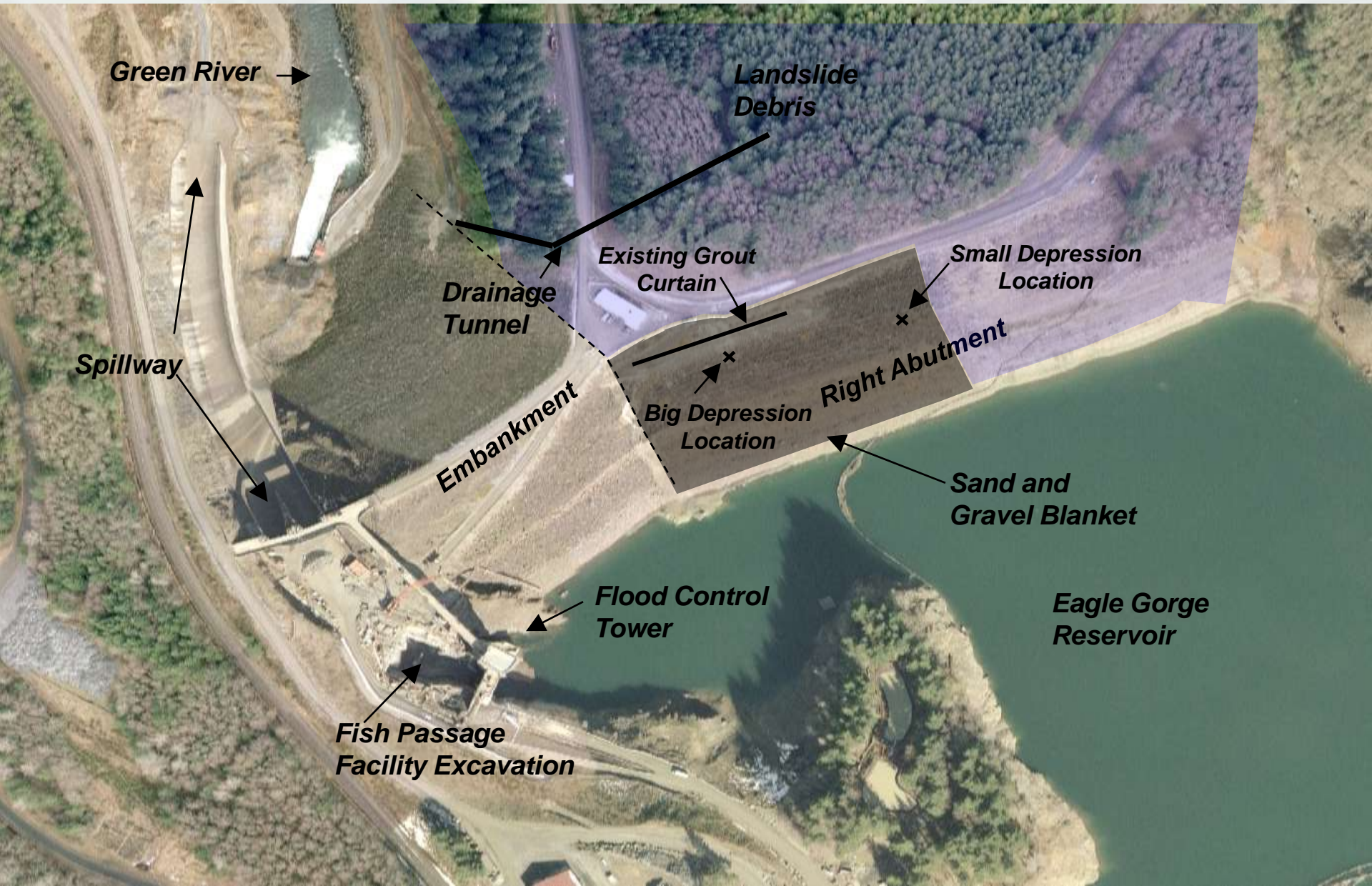
U.S. Army Corps of Engineers



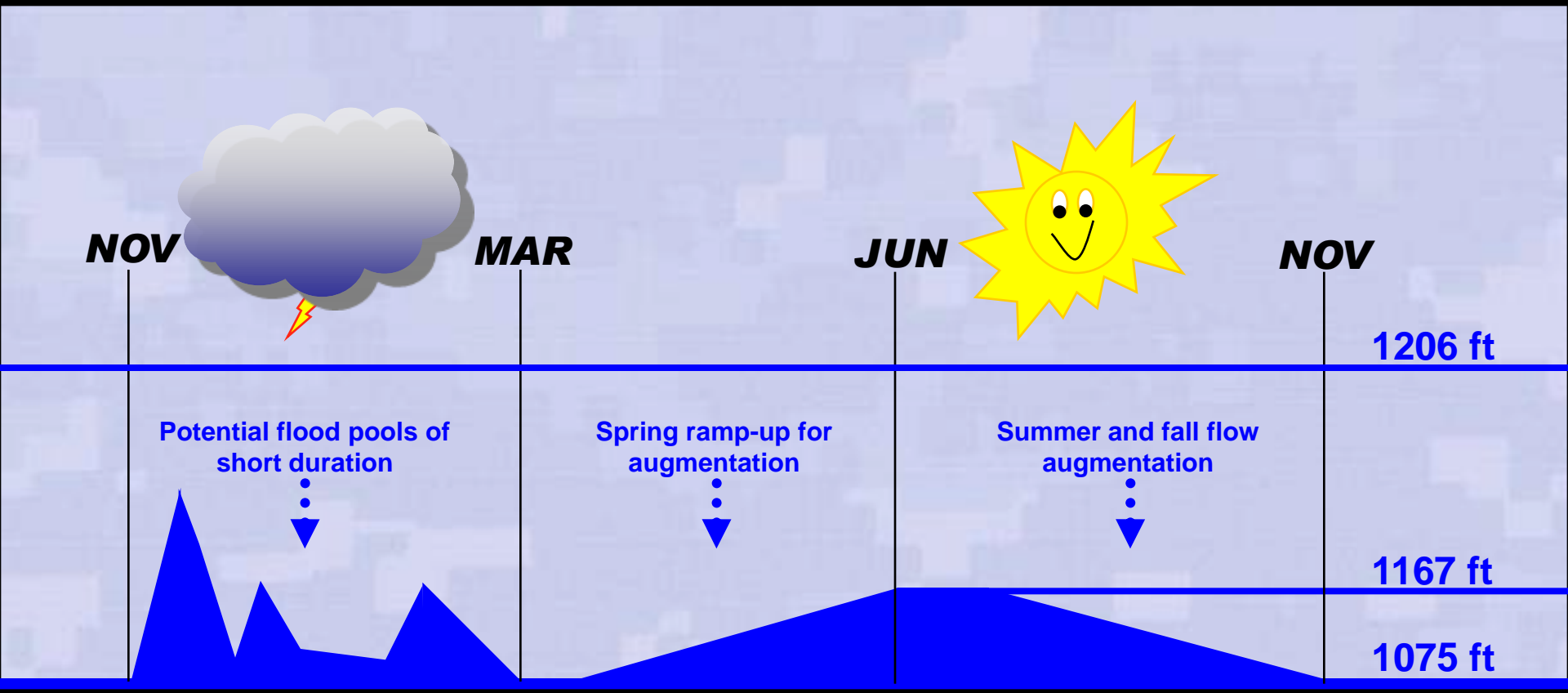
US Army Corps of Engineers
BUILDING STRONG®



Howard Hanson Dam



Normal Project Operations



Pool elevation in feet above sea level

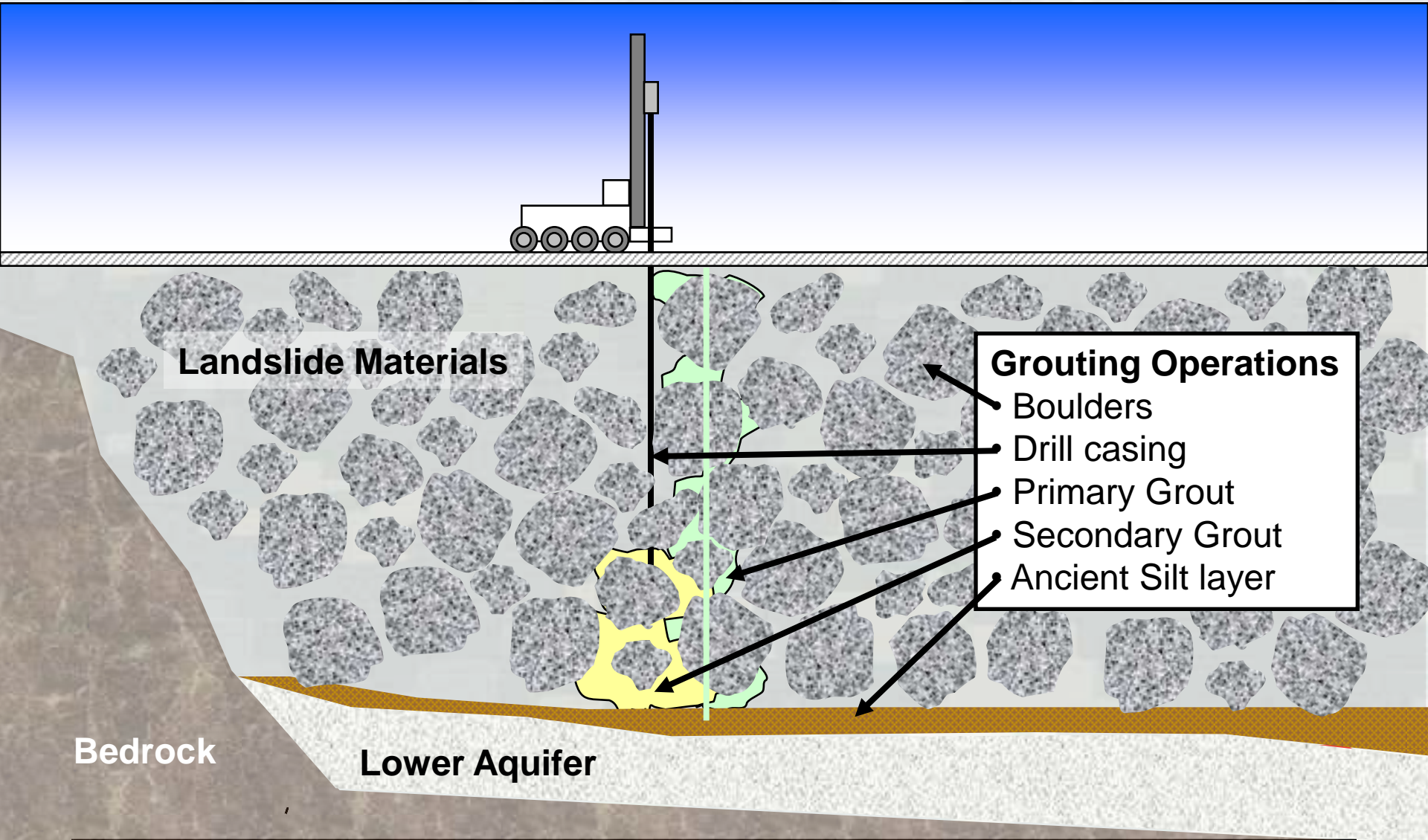


BUILDING STRONG®

Grout Curtain Construction



Grout Curtain Construction

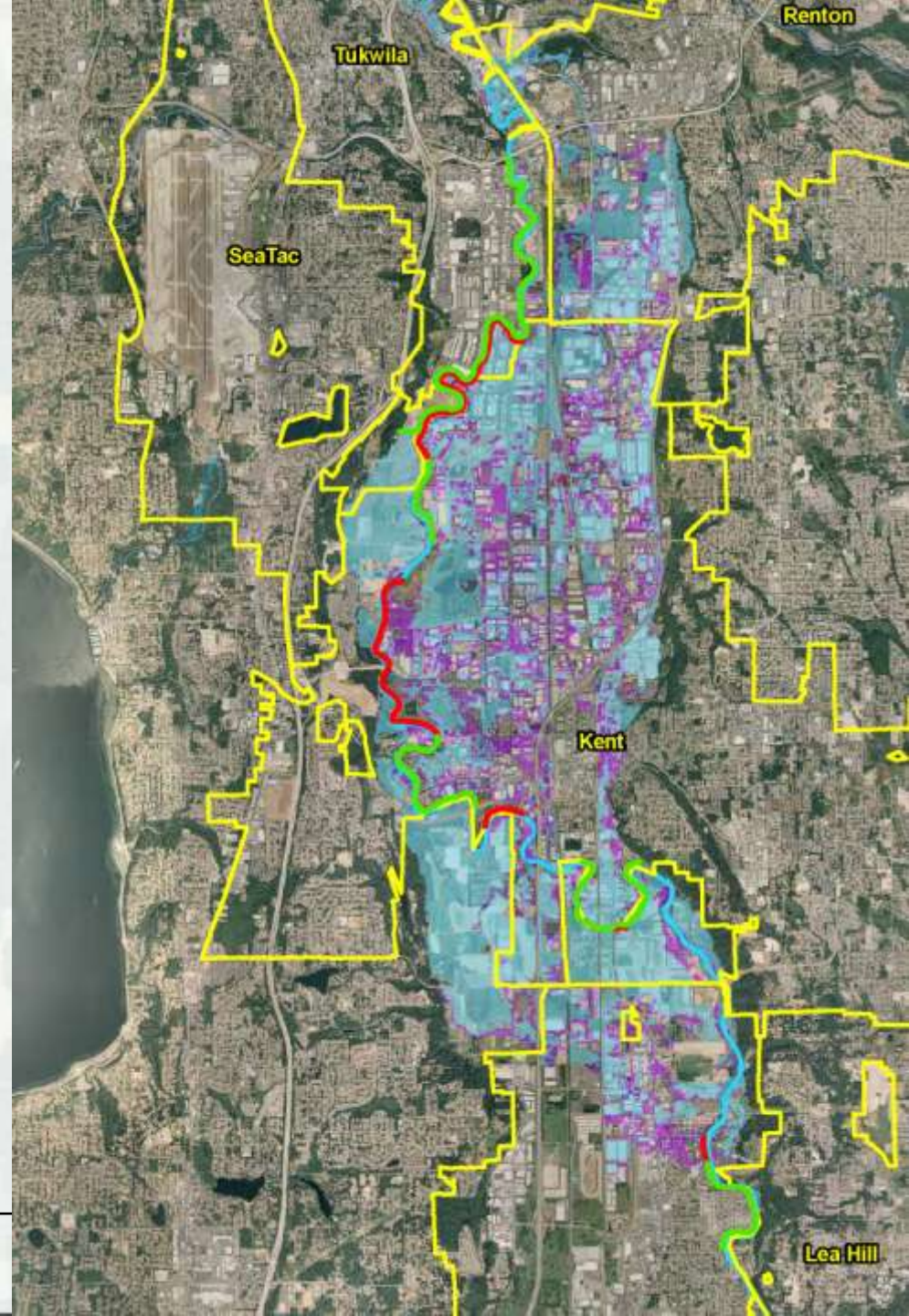


Drainage Tunnel Improvement Construction



Green River Valley

- Blue and Purple shading is the FEMA mapped floodplain.





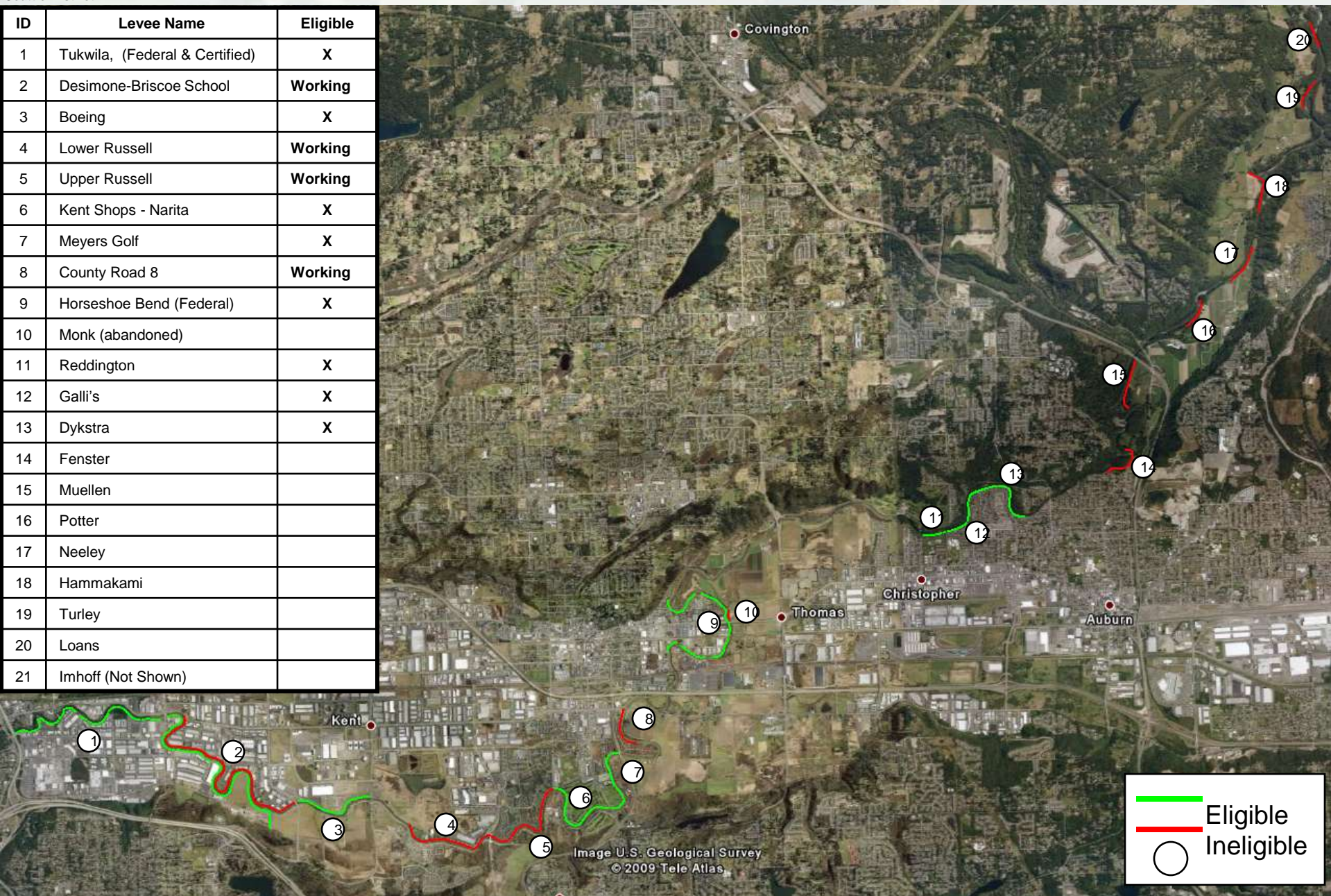
US Army Corps
Of Engineers
Seattle District

As of 20FEB09



Green River Levees

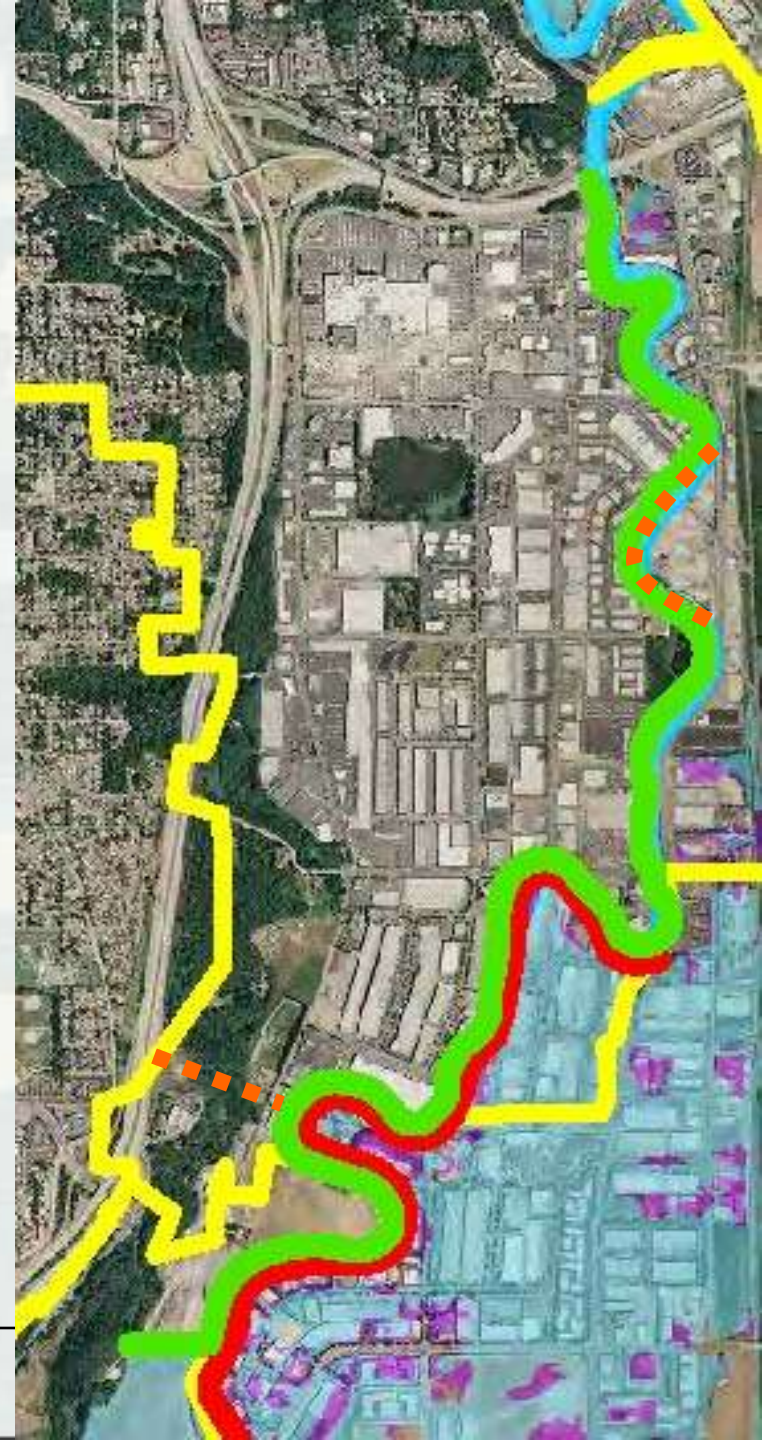
ID	Levee Name	Eligible
1	Tukwila, (Federal & Certified)	X
2	Desimone-Briscoe School	Working
3	Boeing	X
4	Lower Russell	Working
5	Upper Russell	Working
6	Kent Shops - Narita	X
7	Meyers Golf	X
8	County Road 8	Working
9	Horseshoe Bend (Federal)	X
10	Monk (abandoned)	
11	Reddington	X
12	Galli's	X
13	Dykstra	X
14	Fenster	
15	Mueller	
16	Potter	
17	Neeley	
18	Hammakami	
19	Turley	
20	Loans	
21	Imhoff (Not Shown)	



Tukwila

Temporary Measures

- Raise low areas using Hesco systems and supersacks to provide 13,900 cfs capacity.
- Add a cut off levee
- Add 3' of freeboard to levee.



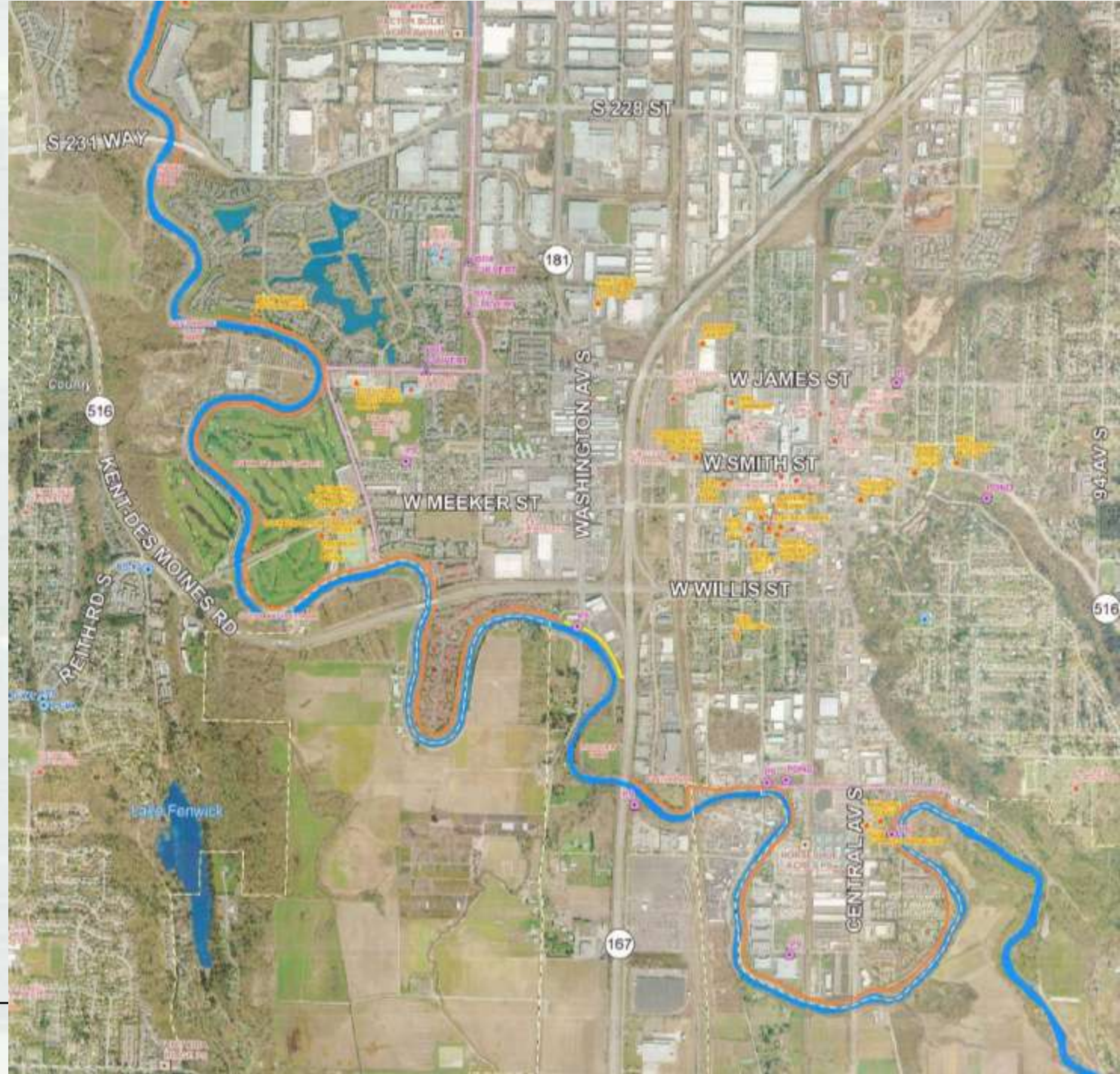
Kent

Temporary Measures

- Raise low areas using Supersacks to provide 3,900 cfs containment.
- Secondary Containment off of levees
- Add 3' Freeboard to right bank levees



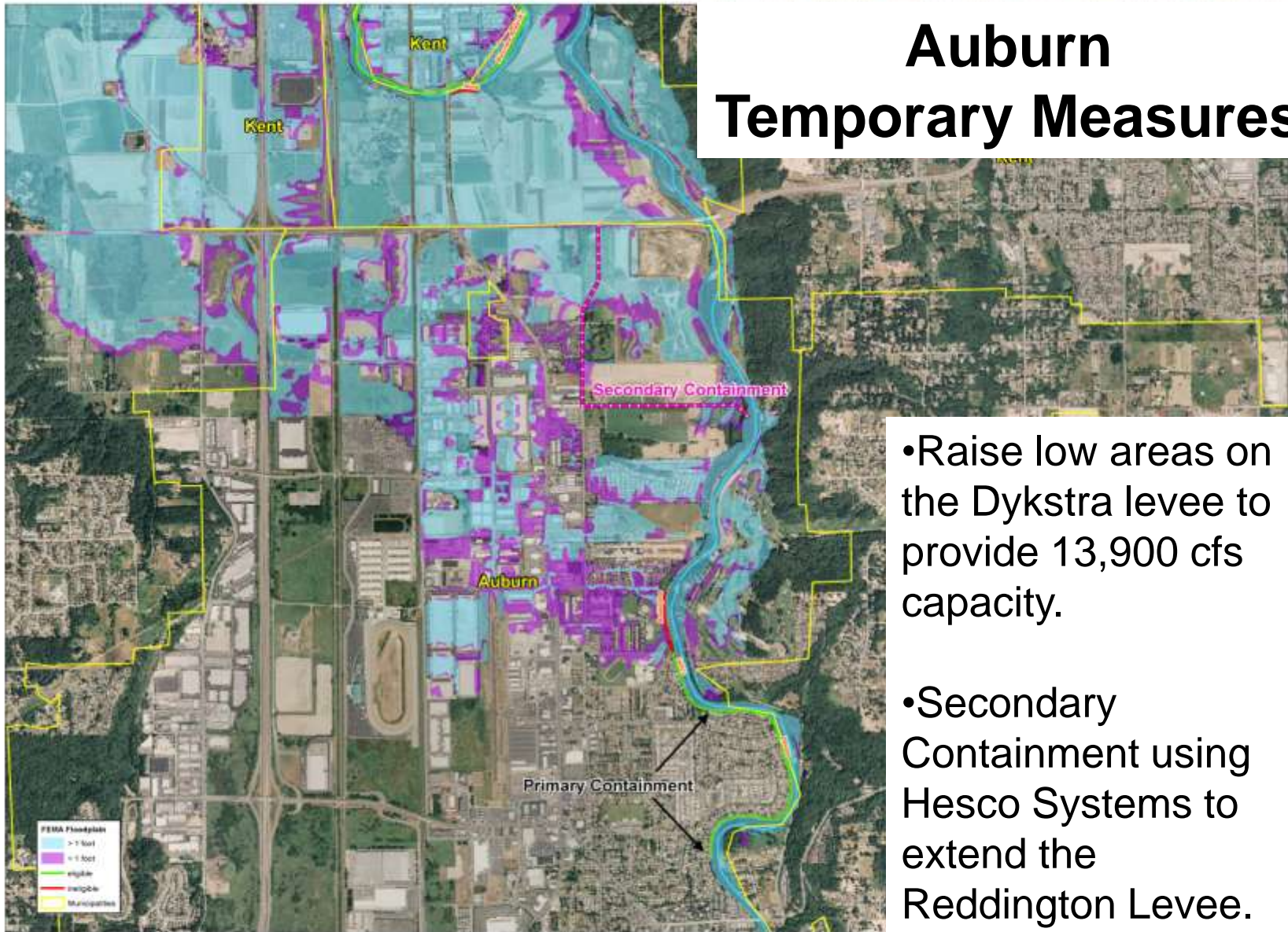
Kent South



Kent North



Auburn Temporary Measures



- Raise low areas on the Dykstra levee to provide 13,900 cfs capacity.
- Secondary Containment using Hesco Systems to extend the Reddington Levee.



Howard Hanson Dam
to the Duwamish River

GREEN RIVER

CREATION DATE: 25 AUG 00

LAST REVISION

MAP AUTHOR: J. Jones

DEPT: Geospatial

Green River Temporary Measures

Locations	Deliveries		
	Hesco	Super Sacks	Sandbags
Auburn	10,500		100,000
Kent		21,000	500,000
Renton		11,000	250,000
Tukwila	10,500	9,000	100,000
King County	6,500		100,000
Seattle District		34,000	1,250,000
Totals	27,500	75,000	2,300,000