



# Youth Action Plan Kick-Off Task Force Meeting

**Date:** Wednesday, May 21, 2014  
**Time:** 1:30-4:30 p.m.  
**Location:** Mercer Island Community Center, 8236 SE 24<sup>th</sup> Street [[MAP](#)] - Mercer Island, WA

Attendance		
Task Force Members Present	Task Force Members Absent	Staff & Consultants Present
<ul style="list-style-type: none"> <li>• Adrienne Quinn</li> <li>• Anne Kirkpatrick (for Sheriff John Urquhart)</li> <li>• Beratta Gomillion</li> <li>• Bobbe Bridge</li> <li>• Bruce Knutson (for Judge Saint Clair)</li> <li>• Calvin Lyons (with Meg Pitman, delegate)</li> <li>• Darryck Dwelle</li> <li>• Darryl Cook</li> <li>• Deanna Dawson</li> <li>• Janis Avery</li> <li>• Katie Hong</li> <li>• Kelly Goodsell</li> </ul>	<ul style="list-style-type: none"> <li>• Leesa Manion</li> <li>• Mahnaz Eshetu</li> <li>• Mark Putnam</li> <li>• Miguel Maestas</li> <li>• Mike Heinisch</li> <li>• Rochelle Clayton-Strunk</li> <li>• Rod Dembowski</li> <li>• Sam Whiting</li> <li>• Shomari Jones</li> <li>• Sorya Svy</li> <li>• Terry Pottmeyer</li> <li>• Terry Smith</li> </ul>	<ul style="list-style-type: none"> <li>• Kelli Carroll</li> <li>• Kristina Logsdon</li> <li>• Mary Bourguignon</li> <li>• Betsy Jones</li> <li>• Elizabeth Gaines</li> <li>• Wendy Watanabe</li> <li>• Ruth Lett</li> <li>• Barbara Rosen (for Chris Strausz-Clark)</li> </ul>
		Public Participants Present
		<ul style="list-style-type: none"> <li>• Kapena Pflum, King Co. Office of Performance, Strategy &amp; Budget</li> <li>• Meg Pitman, Boys and Girls Club</li> <li>• Lori Guilfoye, United Way of King County</li> <li>• Casey Smith, United Way of King County</li> <li>• Jerry DeGriek – Public Health Seattle, King Co.</li> </ul>

## Notes

### I. Welcome

#### A. Welcome, History, Context & Purpose

- King Co. Councilman, Rod Dembowski presented opening remarks
- King Co. Executive, Dow Constantine, presented welcoming remarks

#### B. Consultant Introductions

- King Co. Councilman, Rod Dembowski

##### 1. Elizabeth Gaines, [Forum for Youth Investment](#) (Forum)

- a. The Forum for Youth Investment is a nonprofit, nonpartisan “action tank” dedicated to helping communities and the nation make sure all young people are Ready by 21 -- ready for college, work and life.
- b. The Forum works in partnership with government, business, education and nonprofits, we provide a framework, coaching and tools for leaders who care about youth and care about change.

##### 2. Consulting Team members

- a. Project Leadership at the Forum
  1. [Elizabeth Gaines](#), VP of Policy Solutions (Project Lead)
  2. [Larry Pasti](#), Senior Director of Field Services (expert facilitator)
  3. [Jenny Bonilla Moreno](#) (Project Manager)

- b. Local Consultants
  - 1. [Wendy Watanabe](#), Wantanabe Consultation (expert facilitator)
  - 2. [Chris Strausz-Clarke](#), Third Sector Intelligence (data specialist)
  - 3. [Ruth Lett](#), Third Sector Intelligence (data specialist)
- 3. Core King County Staff from working with Consulting Team
  - a. Kelli Carroll, KCC/CC - Principal Legislative Analyst Sr.
  - b. Kristina Logsdon, KCC –Chief of Staff, Councilmember Dembowski
  - c. Betsy Jones, KCEO/PS Strategic Initiatives
  - d. Mary Bourguignon – Principal Legislative Analyst

**II. Setting Expectations & Task Force Mission**

A. Overall Timeframe & Meeting Desired Results (see table at right)

Target dates	Activity
May 21	Task Force Kickoff Meeting
Week of June 16 <sup>th</sup> or 23 <sup>rd</sup>	Strategy team meetings (possible full task force meeting)
July 23	Full task force meeting with continued work in strategy teams
August	Drafting progress report informed by strategy teams' work
September 1	Task force review of progress report
September 11	Submit progress report to King County Council
Late September	Task Force Meeting
Oct./Nov.	Host three Community Conversations
Nov./Dec.	Task Force Meeting
Jan – March 2015	Approx. three Task Force Meetings
April 2015	Submit Report to County Council

B. Task Force Operating Guidelines

- Commit to continuous attendance (designees must attend all sessions)
- Do the work inside and outside Task Force meetings
- Stay updated and come prepared
- Speak to the interests of all (and identify conflicts of interest)
- Apply your expertise and networks
- Listen intently, speak thoughtfully and attend to the interest of the whole
- Consider feedback in all forms
- Voice your issues and offer proposals
- Strike a balance between gathering input and moving forward
- Confirm decisions as we go (aim for consensus but use exception of one if needed)

C. Process for Receiving Public Comment

- Public signs in
- Write on comment cards
- Is asked to share at end of meeting
- Recorded in meeting notes
- Will also look for ways to engage public attendees with activities
- Additional opportunity for public input online and in community conversations

D. Task Force Mission & Deliverables (per Ordinance 17738 )

- To develop a youth action plan that recommends to the Council a set of priorities for King County in serving infants through young adulthood.

a. Deliverables associated with:

1. Visioning
2. Data
3. Outreach
4. Policy recommendations
5. Prioritizing resources
6. Accountability system recommendations
  - b. Specific deliverables articulated in Strategy Team discussions (see attachment)

- Discussion of what Task Force members want to accomplish (see box at right).

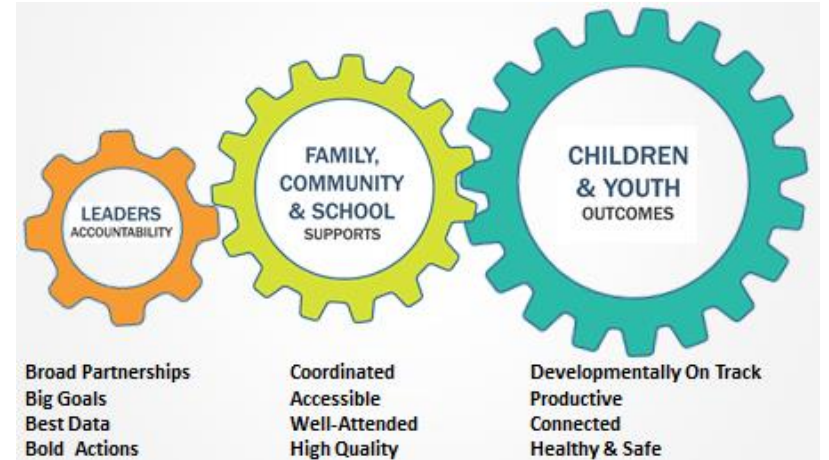
What members wish to accomplish – Recurring Themes

- Wanting to help the “most vulnerable” - homeless, refugees, etc. – intersection with equity issues
- Looking at the county’s role:
  - Funding
  - Early learning
  - Prioritize
- Full range of continuum
- Data research – evidence base
- Influence Public and get public input

### III. Affirming the Vision

#### A. Ready by 21 Theory of Change (The Forum for Youth Investment)

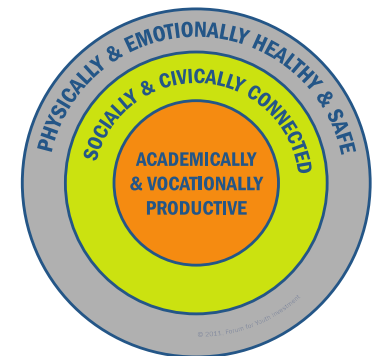
1. Overview:
  - a. A methodology for planning, participation and evaluation
  - b. Long term goal “All youth ready for college, work and life”
  - c. Linked to intermediate goals (prerequisites) of improved supports and settings and more effective leaders.
  - d. Adaptive based on meeting local leaders where they are and inclusive of many perspectives in achieving solutions.
2. How it works: The 3 Gears
  - a. Big Gear (turquoise):
    - At the end of the day, we’re all in this work to improve outcomes for children and youth. That’s hard work, and difficult to show immediate results, at least at population level. To move some stubborn indicators at population level, you’ve got to have patience. (appx. 5-10 years.)
  - b. Middle Gear (yellow):
    - But our experience says there are ways to build your muscle and systems to begin making this work easier and more efficient.
    - To improve outcomes for children and youth, we need to take a hard look at the family, community and school supports that are available. Are they coordinated? Of high quality? Reaching all the kids who need them? Continuously available across the developmental stages?
    - With concentrated effort, we can make an impact on these supports more quickly, but even then, we can still be looking at a 2-5 year horizon for significant, systemic change.
  - c. Small gear (orange):
    - Focuses on Leaders. At the heart of our theory of change is the belief, rooted in our experience working with state and local leaders, that if you build critical capacities at the leadership level (and we define leaders broadly), it makes a big difference in your ability to have an impact on the supports we provide, and ultimately the outcomes we achieve, with and for our young people.
    - Though this leadership work is not necessarily easy, it is possible to make a real impact on this gear within 1-2 years, building core leadership capacities that will make it possible to turn the other two gears more easily, more regularly.



#### B. Present vision statement from Ordinance Affirming (KCC Ordinance 17738, line 196)

***“All infants reach adulthood healthy and safe, academically and vocationally succeeding, and socially and civically engaged.”***

1. The original language provided in briefing by executive staff to Council Committee of the Whole briefing (in June 2013)
2. Age range birth – 24 as starting point and thinking behind a broad age range
3. Samples of Existing King County Plans & Visions
  - a. King County Strategic Plan vision
    - King County: a diverse and dynamic community with a healthy economy and environment where all people and businesses have the opportunity to thrive.
  - b. Health and Human Services Transformation Plan vision
    - All people in King County have the opportunity to thrive and reach their full potential.
  - c. King County Equity and Social Justice principles
    - Fair and Just – We serve all residents of King County by promoting fairness and opportunity and eliminating inequities.
4. Task Force members expressed a desire to incorporate equity into the vision statement
  - a. Issue of unequal conditions of life
5. Desire to add community/family domain to dashboard



C. Youth Action Plan Core Principles

1. Core Principles Exercise – Task Force members discussed individual principles, whether any should be added, and then identified most compelling King Co. example of each core principle listed in the graphic below.
2. In a pre-meeting survey, Task Force members were asked to evaluate the following statements on a scale from 1 to 5 based on the core principles identified below:

### Core Principles

<p><b>ABOUT YOUTH</b></p> <ul style="list-style-type: none"> <li>• Invest early and sustain investments over time.</li> <li>• Support the whole child.</li> <li>• Focus attention on those most in need.</li> <li>• Build on strengths, don't just focus on problem-reduction.</li> </ul>	<p><b>ABOUT COMMUNITY SUPPORTS</b></p> <ul style="list-style-type: none"> <li>• Children don't grow up in programs, they grow up in families &amp; communities.</li> <li>• Support a full range of learning opportunities, formal/informal, in school and out.</li> <li>• Assess and improve quality, reach and impact across all the places young people spend their time.</li> <li>• Recruit, train and retain good staff.</li> </ul>	<p><b>ABOUT LEADERS</b></p> <ul style="list-style-type: none"> <li>• See youth and families as change agents, not clients.</li> <li>• Engage all sectors and stakeholders.</li> <li>• Coordinate efforts, align resources.</li> <li>• Inspire and inform the public.</li> </ul>
---	---	---

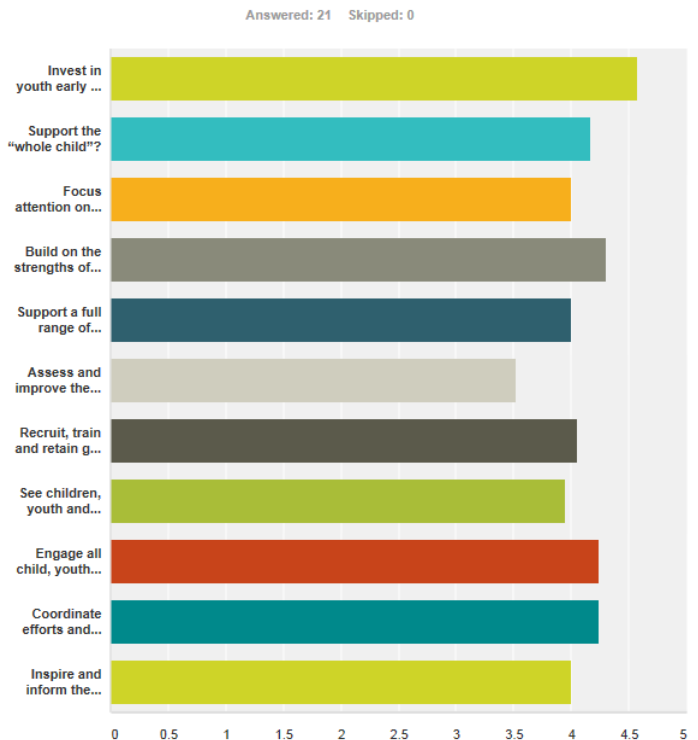
**How important is it that King County...**

- Invest in youth early and sustain those investments over time? **(Avg. Rating = 4.55)**
- Support the “whole child”? **(Avg. Rating = 4.15)**  
Focus attention on the children and youth that are most in need? **(Avg. Rating = 4.05)**
- Build on the strengths of children and youth, and not just focus on problem-reduction? **(Avg. Rating = 4.33)**  
Supporting a full range of learning opportunities for children and youth (formal/informal, in school and out of school)? **(Avg. Rating = 4.00)**  
Assess and improve the quality, scale and impact of all settings where children and young people spend their time? **(Avg. Rating = 3.59)**
- Recruit, train and retain good staff in its child and youth community supports? **(Avg. Rating = 4.10)**
- See children, youth and families as change agents, not clients? **(Avg. Rating = 4.00)**
- Engage all sectors and stakeholders, especially those that are disproportionately impacted? **(Avg. Rating = 4.27)**
- Coordinate efforts and aligning resources for children, youth and families? **(Avg. Rating = 4.23)**
- Inspire and inform the public? **(Avg. Rating = 4.00)**

**KEY**

1 = not at all important  
 2 = somewhat important  
 3 = moderately important  
 4 = very important

**Evaluate the following statements. How important is it that King County...**



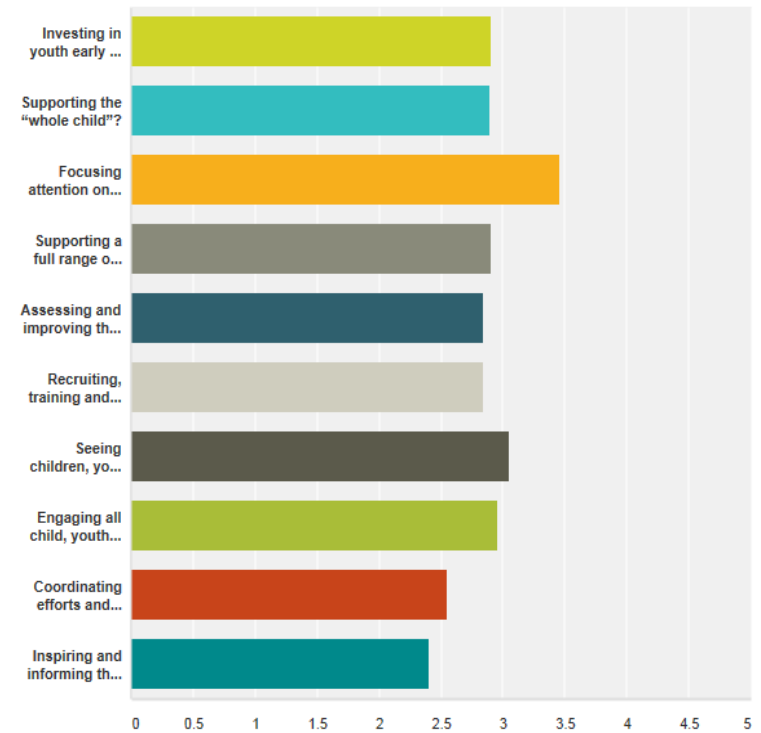
**How well is King County doing at...**

- a. Investing in youth early and sustaining those investments over time?  
**(Avg. Rating = 2.90)**
- b. Supporting the “whole child”? **(Avg. Rating = 2.89)**
- c. Focusing attention on the children and youth that are most in need?  
**(Avg. Rating = 3.43)**
- d. Supporting a full range of learning opportunities for children and youth (formal/informal, in school and out of school)? **(Avg. Rating = 2.90)**
- e. Assessing and improving the quality, scale and impact of all settings where children and young people spend their time? **(Avg. Rating = 2.85)**
- f. Recruiting, training and retaining high quality staff in its child and youth community supports? **(Avg. Rating = 2.85)**
- g. Seeing children, youth and families as change agents, not clients? **(Avg. Rating = 3.1)**
- h. Engaging all sectors and stakeholders, especially those that are disproportionately impacted? **(Avg. Rating = 2.90)**
- i. Coordinating efforts and aligning resources for children, youth and families?  
**(Avg. Rating = 2.57)**
- j. Inspiring and inform the public? **(Avg. Rating = 2.43)**

**KEY**  
1 = very poor  
2 = poor  
3 = fair  
4 = very good  
5 = excellent

**Evaluate the following statements. How is King County at...**

Answered: 20 Skipped: 1



**IV. Overview of Strategy Teams**

- A. Expectations
  - 1. Meet as needed (at least twice this summer)
  - 2. Bring in your own wisdom and resources and connections
  - 3. Respond to the work of the consultants with constructive feedback
  - 4. Own and present the data and information back to the full task force in late July
  
- B. Strategy Team Discussions
  - 1. Review Charge and Tasks of Each Team (see handout attachment)
  - 2. Introduction of staff leadership for each team
  - 3. Scheduled work meetings for summer
  - 4. Discussion team leadership
  
- C. Strategy Teams Composition (see next page)

➤ Youth & Community Leadership/Engagement

1. *Consultant Lead = Wendy Watanabe*
2. *County Staff Lead = Kristina Logsdon*
3. *Team members*
  - Terry Pottmeyer
  - Sorya Svy
  - Kelly Goodsell
  - Shomari Jones
  - Terry Smith
  - Judge St. Clair

➤ Partnerships

1. *Consultant Lead = Elizabeth Gaines*
2. *County Staff Lead = Kelli Carroll*
3. *Team members*
  - Mike Putnam
  - Miguel Maestas
  - Deanna Dawson
  - John Urquhart
  - Adrienne Quinn
  - Mike Heinisch

➤ Programs & Services (*Barbara Rosen/Chris Strausz-Clark*)

1. *Consultant Lead = Chris Strausz-Clark*
2. *County Staff Lead = Betsy Jones*
3. *Team members*
  - Melinda Giovengo
  - Beratta Gomillion
  - Rochelle Clayton-Strunk
  - Leesa Manion
  - Janis Avery
  - Rod Dembowski
  - Sam Whiting

➤ Child & Youth Data

1. *Consultant Lead = Ruth Lett*
2. *County Staff Lead = Mary Bourguignon*
3. *Team members*
  - Bobbe Bridge
  - Katie Hong
  - Mahnaz Eshetu
  - Derryck Dwelle
  - Darryl Cook
  - Calvin Lyons

**V. Next Steps**

A. Strategy Team Meeting dates/times/locations for June

**1. Community/Youth Engagement & Leadership**

- Thursday - June 26, 2014
- 10am – 1pm
- Location: Kent Youth & Family

**2. Partnerships**

- Thursday – June 26, 2014
- 8am – 10am
- Location: Kent Youth & Family

**3. Child & Youth Data**

- Wednesday – June 11, 2014
- 10am – 1pm
- Location: Raikes Foundation

**4. Programs & Services**

- Wednesday - June 25, 2014
- 9am – 11am
- Location: 2100 Building

**Suggestion Box**

- ✓ Get input from school superintendents
- ✓ Send out power point slides in advance
- ✓ More dialogue/talking among taskforce members
- ✓ Site considerations
  - More space/comfortable seating
  - Water
  - Better light

B. Parking Lot Questions

1. Revision vision elements and outcomes dashboard
2. Deeper discussion of additional core principles at next Task Force meeting

C. Housekeeping Items

1. Collected County Ethics forms
2. Reviewed County email protocol
3. Pre-meeting surveys likely be the norm going forward
4. Confirm June dates per questionnaire, July date per doodle poll results
5. will send out time and location for June and July via email
6. Co-Chair Discussion
  - Discussion of pros/cons of having co-chairs
  - Possibility of using strategy team chairs as leadership voice
  - Will send out survey where you can voice your opinion

UPCOMING TASK FORCE MEETINGS

**WEDNESDAY, JULY 23**

**12:30PM - 4:30PM**

**FRIDAY, AUGUST 22**

**8:30AM – 12:00PM**

VI. Adjourn