

Early childhood (0-8 year olds) Packet

In this packet you have the data and information collected from the Indicators Strategy Team work plus the Community Conversations “Common Causes” and Solutions. Also included are a summary of the relevant Programs and Services for early childhood from the inventory and a listing of relevant Partnerships (from mapping moving trains) and Strategic Plans.

1 Indicators – *see attached*

- Low Birth Weight Babies
- Prenatal Care
- Elementary Education Outcomes
- Unexcused Absences
- Homeless Students
- Child Abuse and Neglect

2 Common Causes – clusters of underlying local conditions – *see handout & attached*

- a. Heat Map Overview – to be provided
- b. By theme (for 0-8)

3 Solutions – generated from Community Conversations – *see attached*

Summary chart answers 4 questions: Are there King County programs and services that are currently doing a good job in addressing the common root causes? Are there King County programs and services that could be doing a good job in addressing the common root causes? What could we, as community members in this room – with the power, ability and connections we represent – do to make a difference in those underlying issues? How can King County support us as community leaders in this work?

4 King County Programs – *see attached*

- a. For 0-8
- b. For Families

5 Partnerships & Strategic Plans – *see below & attached*

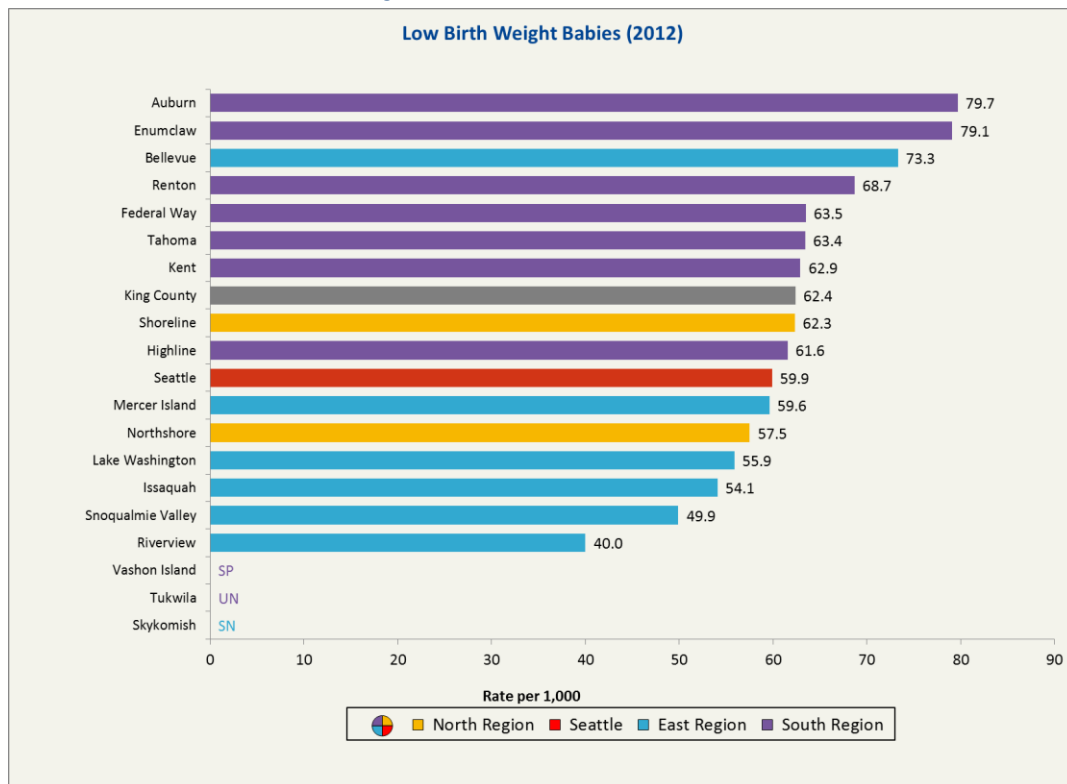
Partnerships

- SOAR Early Learning Coalition and Promotores Network
- King County United Way
- Youth and Family Services Association
- The Roadmap Project
- Community and Human Services and Public Health Agencies; City Govts.
- Dept of Community and Human Services

Plans

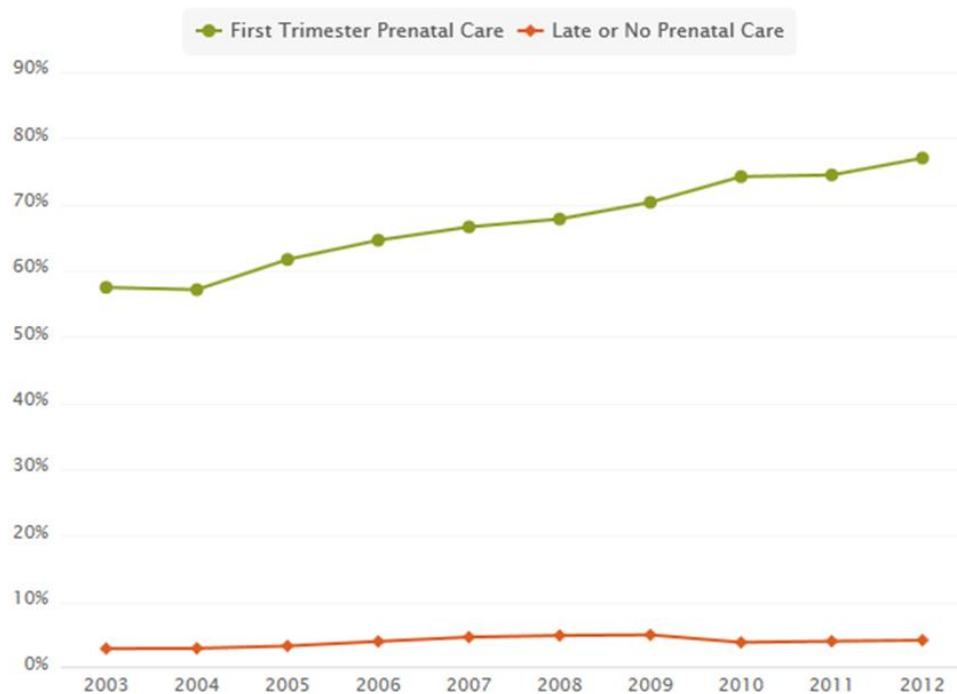
The Roadmap Project Baseline Report
Health and Human Services Transformation Plan
K.C. Mental Illness and Drug Dependency Action Plan

Early Childhood Indicators

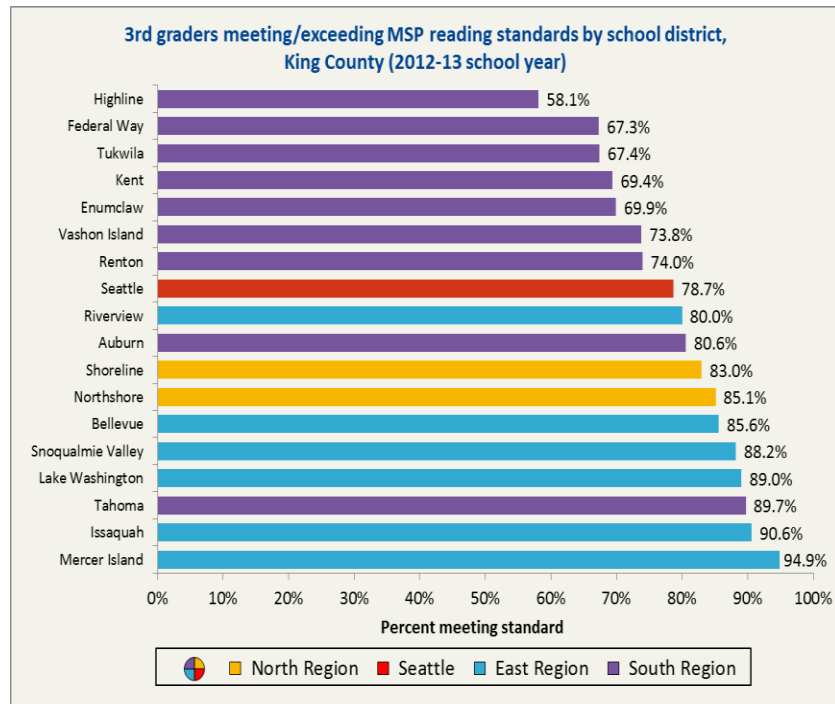


Prenatal Care

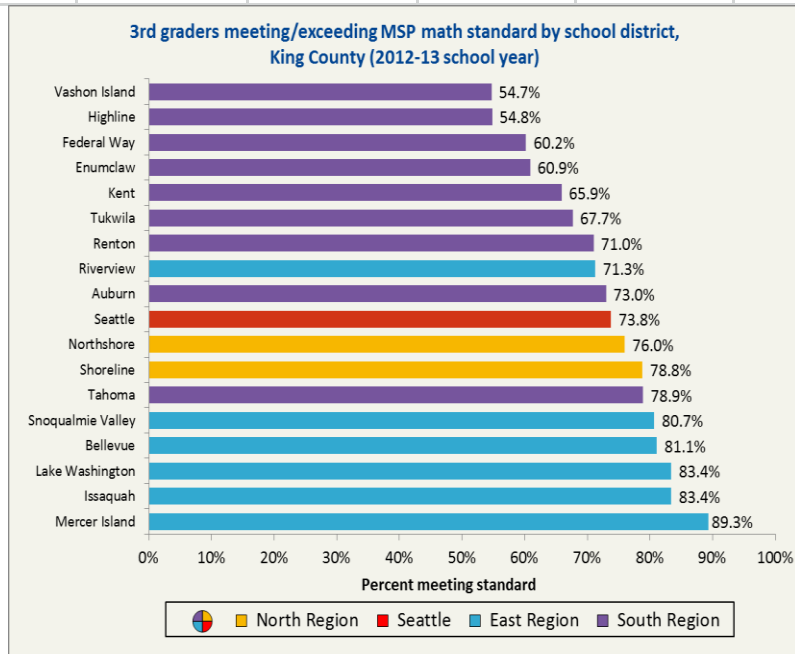
King



Elementary Education Outcomes

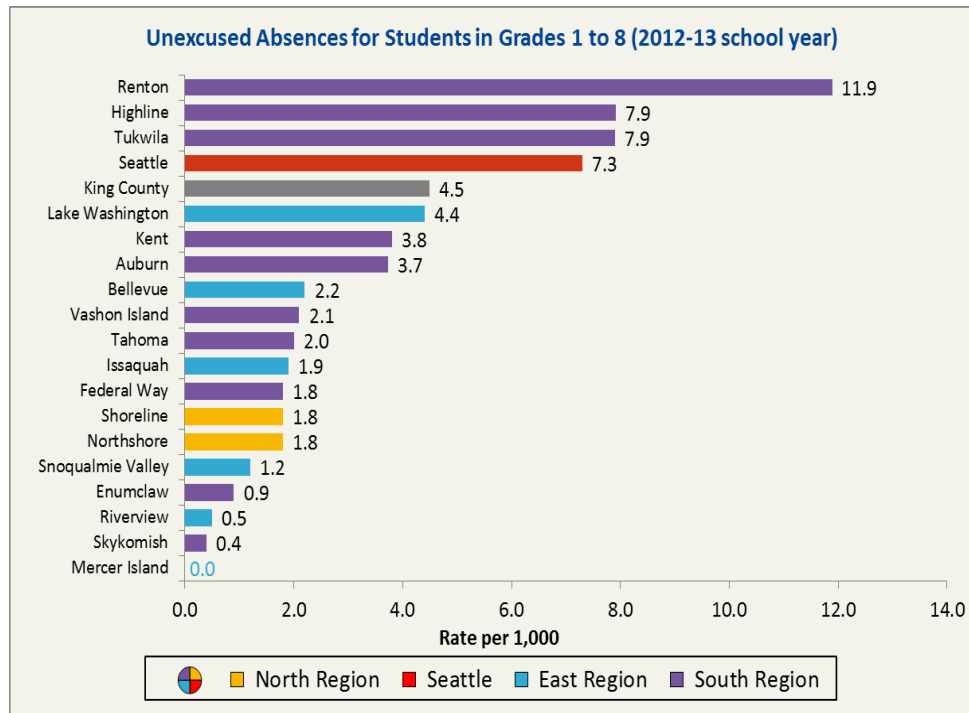


2007 - 08	2008 - 09	2009 - 10	2010 - 11	2011 - 12	2012 - 13
76%	77%	77%	79%	75%	79%

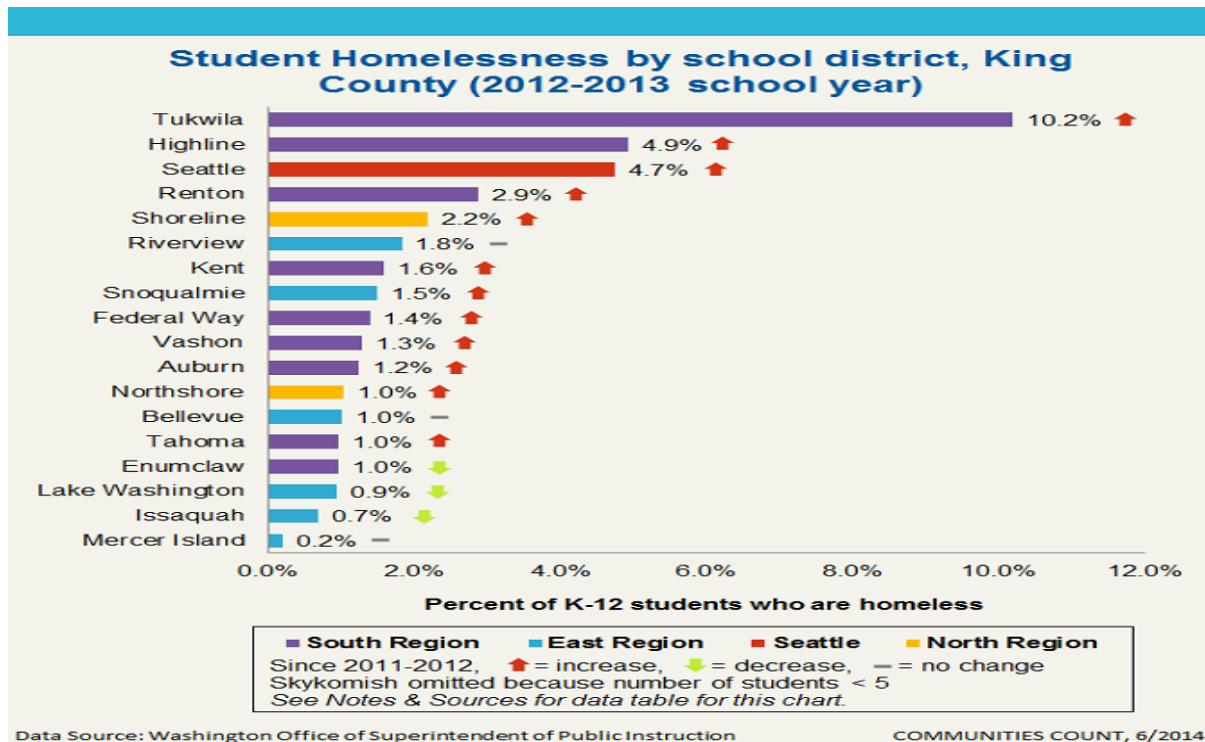


2008 - 09	2009 - 10	2010 - 11	2011 - 12	2012 - 13
73%	69%	69%	73%	73%

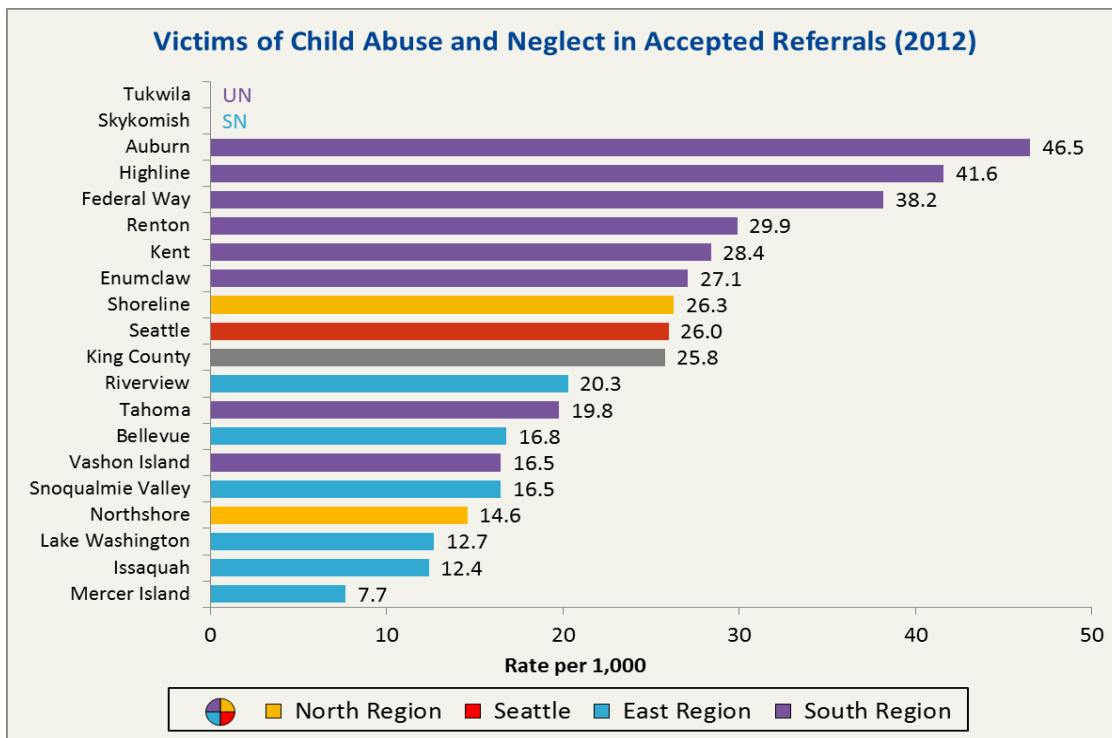
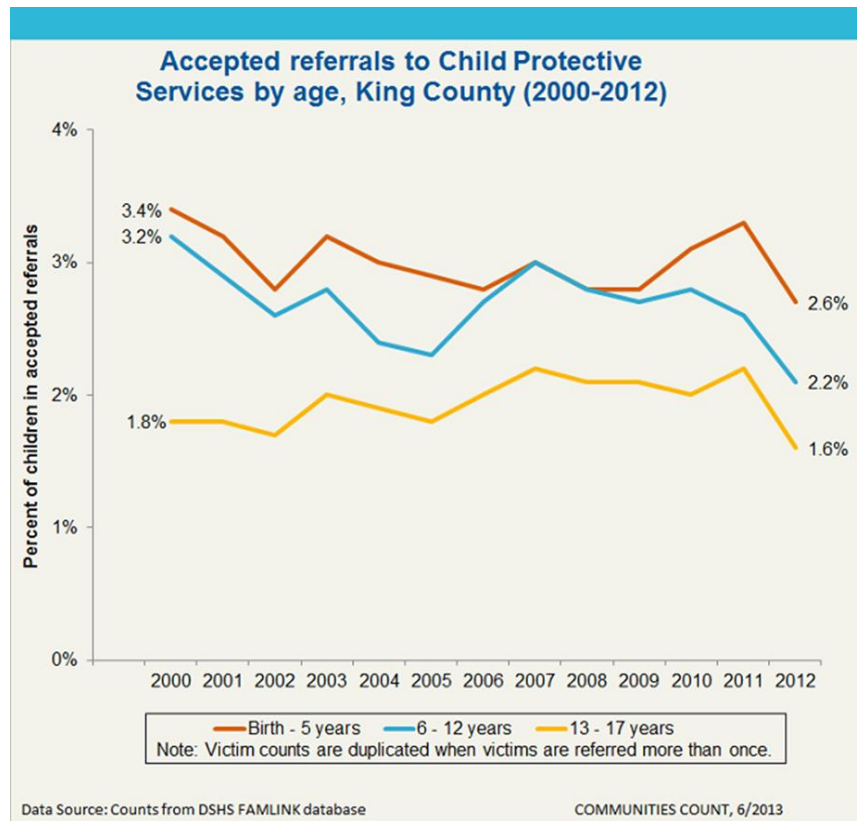
Unexcused Absences



Homeless Students



Child Abuse and Neglect



Common Causes by Theme (0-8) – Clusters of underlying local conditions

2

Theme	Local Condition	Related Indicator	Community Conversation
COMPETENT ADULTS Caring, Competent Families Professionals & Role Models	FAMILY/PARENT CHALLENGES		
	Lack of Parent Supports	Lack of support for parents	Child Abuse and Neglect
		Parental Support	Elementary Education Outcomes
	Lack of Parental Involvement	Parental Engagement	Elementary Education Outcomes
		Lack of Parental Involvement	Unexcused Absences
		Parents not engaged or don't know school policies on absences	Unexcused Absences
	Family Issues	Family issues and attitudes around education	Unexcused Absences
		Family issues at home, family not involved in child's education	Unexcused Absences
		Family obligations, lack of hope for further schooling, boredom, need to work	Unexcused Absences
	Family Expectations	Family issues and attitudes around education	Unexcused Absences
		Rebelling against parents' expectations	High School Dropout Rate
CARING COMPETENT ADULTS			
	Lack of Teachers / School Connection	Lack of teachers	Elementary Education Outcomes
BASIC NEEDS & SERVICES Safety, Housing & Transportation	HOUSING & TRANSPORTATION		
	Transportation	Transportation (lack of resources)	Elementary Education Outcomes
	Lack of Affordable/Safe Housing	Lack of affordable/safe housing	Homeless Students
	Many Faces of Homelessness	Many faces of homelessness	Homeless Students
	SAFETY		
	Community Environment	Acceptance of violence	Child Abuse and Neglect
		Community Structure	Elementary Education Outcomes
		Community Atmosphere	Elementary Education Outcomes
	Negative Media	Negative culture/media	Elementary Education Outcomes
WELLNESS SUPPORTS Stress, Mental Health, Physical Health	STRESS // HOPELESSNESS		
	Stress / Trauma / Pressure	Stress: Limited access to resources	Child Abuse and Neglect
		PTSD-refugees' experience	Child Abuse and Neglect
		Trauma/intergenerational	Child Abuse and Neglect
		Inability to manage emotions	Unexcused Absences
		Pressure/rigor of school work; Lack of sleep due to homework load and early start time; Family issues; Lack of motivation/energy	Unexcused Absences
	Lost / Not Motivated	Feeling lost	Unexcused Absences
		Motivated	Unexcused Absences
	Peer Pressure	Peer pressure to skip w/ friends (nobody skips alone anyway)	Unexcused Absences
		As grade increases, students become more academically challenged and feel they don't have as much time to bully	Unexcused Absences
	School Pressure		Unexcused Absences
	MENTAL HEALTH & PEER PRESSURE		
	Stigma	Stigma of mental health	Child Abuse and Neglect
		Stigma of mental health	Child Abuse and Neglect
	Drugs & Mental Health	Mental health, chemical dependency	Unexcused Absences
	Mental Health	Mental Health	Homeless Students
	HEALTH (including substance abuse)		
	Poor Nutrition & Lifestyle	Culture of poor eating/nutrition	Elementary Education Outcomes
		Sedentary lifestyle	Elementary Education Outcomes
		School education focuses on prevention of pregnancy, not what to do when pregnant later in life	Prenatal Care
	Parental Health	Parents themselves don't have self discipline about self care/nutrition	Prenatal Care
		Substance use by mom	Birth Weight Babies
		Lack of access to prenatal care	Birth Weight Babies
		Medical practices relational, c-section	Birth Weight Babies
	Drugs & Alcohol	Alcohol abuse	Child Abuse and Neglect

Common Causes by Theme (0-8)– Clusters of underlying local conditions

Theme	Local Condition	Related Indicator	Conversation
EDUCATION & EMPLOYMENT	EDUCATION Y& EMPLOYMENT OPPORTUNITIES		
	Limited Ed / Structures	Lack of education	Homeless Students Kent
	Lack of access to jobs/training	Low-paying jobs	Homeless Students Kent
LACK OF ACCESS, AWARENESS, & ENGAGEMENT	LACK OF AWARENESS OF SERVICES & SUPPORTS		
	Lack of Access	Access to Resources/Healthcare, knowing about it	Prenatal Care Shoreline
		Lack of access or late access to pre-natal care	Birth Weight Babies Shoreline
		Schools Infrastructure for homeless	Homeless Students Kent
	Lack of Awareness/Knowledge	Lack of awareness of community resources	Obesity Rate Snoqualmie
		Lack of access or knowledge of resources for homeless	Homeless Students South Seattle
		Those who are homeless might be ashamed of the fact they are homeless and don't seek help	Homeless Students Shoreline
	LACK OF ENGAGEMENT		
	Hopelessness/Fear	Hopeless/Helpless cycle	Unexcused Absences Snoqualmie
	Struggle/bored/Irrelevant	Students who struggle in certain subjects skip classes to avoid work/test	Unexcused Absences Shoreline
		Students find themselves uninterested in school, thinking what they learn won't help in the future, associating school with being bored, etc	Unexcused Absences Shoreline
		Not being challenged to their potential/not interested, engaged	Unexcused Absences Shoreline
		When students feel that what they are learning in school is pointless, they may feel less inclined to attend school and they skip	Unexcused Absences Shoreline
			Unexcused Absences Shoreline
ECONOMIC & FINANCIAL FACTORS	RESOURCES		
	Limited Knowledge of resources	No insurance; Lack of knowledge of resources available; Difficulty accessing resources	Prenatal Care Shoreline
		Unmet needs	Child Abuse and Neglect South Seattle
			Elementary Education Outcomes Snoqualmie
	Lack of resources for rural & small towns	Lack of resources/lack of programs in rural areas	Homeless Students South Seattle
		Small cities have few resources and can't prioritize youth and young adults	Homeless Students South Seattle
	Uneven resources, eligibility	Restricted funding and eligibility	Homeless Students South Seattle
		Uneven/unequal distribution of funding	Homeless Students South Seattle
	Lack of funding for programs	Lack of outside-of-school help , poverty, other problems at home	Elementary Education Outcomes Shoreline
	Lack of quality	Lack of quality	Elementary Education Outcomes Kirkland
	INSTITUTIONAL STRUCTURES		
	POVERTY & ECONOMIC STRUGGLE		
	Poverty, Cost, Funding, Limited Resources	Extreme poverty	Child Abuse and Neglect South Seattle
		Poverty	Child Abuse and Neglect Kent
		Abuse might be occurring when parents struggle financially and are too tired to teach their children good work habits and what they should do - when this happens the student might struggle in school and as punishment the parent releases their stress and rage by abusing their struggling child	Child Abuse and Neglect Shoreline
		Economic struggles could trigger abusive parents ; substance abuse; history of abuse; mental health	Child Abuse and Neglect Shoreline
		Poverty, lack of support	Elementary Education Outcomes Shoreline
		Poverty, immigration/refugee status (English-language learners)	Elementary Education Outcomes Shoreline
		Economy (Losing Homes)	Unexcused Absences EXTRAS
CULTURAL & SOCIETAL FACTORS	CULTURAL DIFFERENCES		
	Language, Culture, "Isms"	Lack of cultural awareness	Child Abuse and Neglect South Seattle
	Cultural Differences	Cultural differences, belief that it is acceptable , vicious cycle, parents pass on to children Lack of awareness about psychological/emotional affects	Child Abuse and Neglect Shoreline
		Cultural differences, western education not as important, educational system not as understanding of said cultural differences, lack of emphasis on the benefits of holistic education	High School Graduation Shoreline
	Language Differences	Immigrant communities English as a second language	Elementary Education Outcomes Shoreline
	Rural	Lack of internal access, rural- wanting kids to be farmers	Elementary Education Outcomes Shoreline
	RACISM/SEXISM		

	OVERALL SUMMARY THEMES
Are there King County programs and services that are currently doing a good job in addressing the common root causes? Be specific. Give examples.	Many programs and services were listed but top ones were: Hopelink, YMCA, Nurse Family Partnership, Home Visits, Boys and Girls Club, WIC, Parenting Classes, School lunch program, All day kindergarten.
Are there King County programs and services that could be doing a better job in addressing the common root causes? Be specific. Give examples. What could be improved?	Connect families to existing services, increase wraparound/integrated services, access for multilingual, address resource gaps. many approaches listed including parent education, SEL programming, early intervention, family needs assessment, living wage job development, financial literacy, holistic services for children and families.
What could we, as community members in this room – with the power, ability and connections we represent – do to make a difference in those underlying issues?	Advocacy, increased funding, provide more information to community leaders/advocates, increase programming & daycare were top themes. Suggestions included better understanding frontline worker needs, support parent engagement, increase cultural competence, increase youth voice, among many others.
How can the King County support us as community leaders in this work?	Listen. Funding. Provide information. Experiment with new programming. Educate community about programs, poverty & changing demographics, convene community forums, ensure equitable distribution of resources, parenting classes, afterschool opportunities. Partner with community organizations.

King County Programs for 0-8

4

Dept.	Program/Project	Description	Total Program Budget*
DCHS	DDD / Early Intervention Birth to Three Program	BT3 (Birth to Three) Program works with organizations throughout King County to provide services to children birth to three who have disabilities and/ or developmental delays. Eligible infants and toddlers and their families are entitled to individualized, quality early intervention services in accordance with the federal Individuals with Disabilities Education Act (IDEA) Part C. Link to provider network: http://www.kingcounty.gov/healthservices/DDD/services/babiesAndToddlers/navigate.aspx	\$6,355,330.00
DPH	Cultural Navigator	(VHSL) Strengthen families by supporting the healthy interactions between parent and child by providing cultural navigators and access to services for minority and immigrant populations with limited and non-English speaking individuals and families. Provides referral and information; family support and Play and Learn groups to model to caregivers how children learn through play.	\$70,000.00
DPH	Family, Friend, and Neighbor & Kaleidoscope Play and Learn Project	(VHSL) FFN is a comprehensive, community-based network of supports and resources for family, friend, and neighbor caregivers and the children in their care. FFN provide care	\$53,000.00
DNRP	Waste Reduction and Recycling School Education Program	Provides an assembly program to elementary schools on resource conservation. Provides classroom workshops to K-12 classrooms. Provides project ideas for student Green Teams.	\$251,400.00
DNRP	King County Green Schools Program	Assists K-12 schools to improve conservation practices, engage their school communities in environmental stewardship, and operate environmentally efficient facilities	\$201,000.00
DNRP	Brightwater Center Family Programs	Monthly family programs are offered at Brightwater Center that teach about the natural world and how to protect our environment.	\$20,000
DCHS	Mental Health Outpatient Services	Provided at over 30 agencies throughout the county - A wide range of mental health services provided in an outpatient format that address symptoms of emotional disturbance and trauma with a goal of developing pro-social skills and resiliency.	\$26,000,000.00
DPH	Pediatric dental services	The Dental Program provides preventative and restorative dental services to low income children. Services include comprehensive and periodic (6-month) exams, X-rays, cleaning, and restorations.	\$11,385,000.00
DPH	Women, Infants, and Children (WIC)	The purpose of WIC is to improve pregnancy outcomes and children's growth and development through checks for healthy food and nutrition education. Nutrition education helps families learn how to select a healthy diet on a limited budget. The program serves low-income pregnant women and children five and younger. WIC services include conducting brief health screenings to monitor growth (weight and height), review blood iron levels, identify health risks, and assess diet and eating patterns. Dietitians provide nutritional counseling. Each client receives checks to buy healthy foods each month.	\$10,287,000.00
DPH	Seattle School Based Health Centers (SBHC)	A full range of primary care, reproductive care, health education services, mental health counseling, and dental care are offered in support of academic success at all of Seattle's comprehensive high schools and selected elementary and middle schools, within the context of well child and adolescent primary care. 26 centers are run by 6 sponsor agencies: PHSKC, Neighborcare Health, Group Health Cooperative, International Community Health Centers, Odessa Brown, & Swedish Medical Center. During the 2012-2013 School Year there were over 33,000 medical and mental health visits.	\$6,012,000.00
DPH	Primary Medical Care for children and youth	Services include primary medical care for children: illness care, well child check-ups, immunizations, child's health, growth and development, and referrals to specialists.	\$4,903,000.00

King County Programs for 0-8

Dept.	Program/Project	Description	Total Program Budget*
DCHS	6a. Wraparound Services	An evidence based practice providing facilitated child/youth and family teams for multi-system- involved youth. Five agencies provide Wraparound Delivery Teams: Valley Cities Counseling and Consultation, Community Psychiatric Clinic, Sound Mental Health, Therapeutic Health Services and Center for Human Services.	\$ 4,500,000.00
DCHS	Children's Crisis Outreach Response System (CCORS) - YMCA Crisis Services	Provides emergent and urgent crisis response for children/youth and their families experiencing behavioral health crises. These are children/youth who are not enrolled in outpatient services. This program includes a partnership with Region Two South Division of Children and Family Services (Child Welfare).	\$ 2,877,313.00
DPH	WA State Immunization Information System & Child Profile Health Promotion	Staff works on contract with Washington Department of Health (DOH) to conduct day-to-day operations of the statewide Immunization Registry and Health Promotion system. Through the Health Promotion component, parents across Washington are sent a series of mailings for their children between birth and age 6 with well-child visit and immunization reminders, nutrition, development, safety and more child health information. The Immunization Registry is used by 95% of health care providers who give immunizations to track and forecast immunizations on people of all ages. The Health Promotion mailings reach 90% of the target audience statewide.	\$ 1,705,000.00
DPH	Child Care Health Program	Offers health direct consultation and training to improve the health and safety of child care environments throughout Seattle & King County. Onsite consultation identifies strategies to address communicable disease prevention, environmental health, nutrition, disaster preparedness, immunizations, child development, social/emotional/behavioral concerns. Supporting children with special needs and advocates for the needs of children in child care through community partnerships and policy development. Indirect serves are provider via phone, email and website. Number of children served varies.	\$ 1,333,000.00
Healthy			

King County Programs for Families

Dept.	Program/Project	Description	Total Program Budget*
DPH	Children with Special Health Care Needs Program	Home visiting by Public Health Nurse to children with medically fragile/complex health or developmental conditions to assist families with transition from hospital to home, assure coordination of care and establish a Healthcare home. For birth to three children with developmental delays, assure connection to Early Intervention Services. PHNs provide assessment on children with special needs and the impact of that health condition on the parent ability to participate in WorkFirst activities. Phone services to assist establishing specialty and community based services. Consultation available to community providers that are working with high risk, high needs children.	\$ 864,000.00
DPH	King County Dirt Alert	Raise awareness about lead and arsenic exposure in soil from the former Asarco smelter. Long term exposure can lead to severe immediate and lifelong health consequences, especially for children. KCDA has awarded three community grants to Latino Community Fund, Korean Women's Association and Child Care Resources. They will work together to deliver culturally and linguistically appropriate outreach to Spanish, Korean and Somali residents and child care providers in South King County.	\$ 500,000.00
DCHS	1f. Parent Partner Youth Peer	Funds a family support organization, called Guided Pathways-Support for Youth and Families (GPS), to provide information, resources and supports to parents/caregivers of youth with serious emotional disturbances and/or substance abuse including access to Parent Partners and Youth Peer mentors.	\$375,000.00
KCSC	Family Integrated Transition (FIT)	Intensive 24/7, home-based intervention and support for 5-6 months with Dialectic Behavioral Therapy. Families may also receive psychiatric services and medication management.	\$ 284,900.00
DCHS	DDD / Children's BeST Program	Children's Behavior Support Team (BeST) Program. Empower families with the knowledge and skills necessary to understand the causes of problem behavior and to effectively implement positive behavior supports in natural family contexts. Provide effective prevention and intervention strategies for those most at risk and most in need to prevent or reduce more acute illness, high-risk behaviors, incarceration, and other emergency medical or crisis responses.	\$ 259,596.00
DPH	Healthy Outcomes Prevention and Education (HOPE)	Preventing infant mortality and improving infant health outcomes by linking women and their families in minority communities to health care and needed services. Research shows that linking women of color and their families to health care and other services and providing culturally appropriate support will reduce stress and lead to improved birth outcomes.	\$175,000.00
DCHS	Institute For Family Development	Provides Functional Family Therapy (FFT), an evidence-based program, to youth and their families. FFT includes assessment, development of family goals, specific intervention techniques, and teaches skills necessary for success.	\$149,600.00
KCSC	Multi-Systemic Therapy (MST)	Intensive 24/7, home-based intervention and support for 4-6 months. Family structure required, but can serve foster and extended families and families in crisis.	\$127,400.00
DPH	Volunteer Training Network	A train-the-trainer program that equips community members (speaking a language other than English) to educate their peers (friends, family and neighbors). The trainers teach workshops and build capacity to reduce toxins in the home setting. Trainers receive training and teaching resources (in their first language) from subject matter experts from the Local Hazardous Waste Management Program.	\$ 65,000.00
Healthy			

King County Programs for Families

Dept.	Program/Project	Description	Total Program Budget*
KCSC	Functional Family Therapy (FFT)	Weekly in-home family counseling sessions for 3-4 months. Family structure/committed caregiver is required; foster families eligible.	\$50,500.00
DPH	Healthier and Toxic Free Homes	A community-directed partnership with SOAR Coalition to raise awareness and build capacity to reduce toxics in the home setting. Communities involved in this project include Bhutanese/Nepalese, Chinese, Filipino, Latino, and Purepecha. Community members play a leadership role in identifying issues and solutions for household toxics.	\$ 50,000.00
DPH	Eco-Healthy Childcare	Offers county-wide training and chemical-related technical assistance visits to the child care industry. On-site services emphasize reducing children's exposure to toxics.	\$ 31,000.00
DPH	Childhood Lead Poisoning Prevention	Environmental case management services to families of children identified as having above average blood lead levels (≥ 5 $\mu\text{g}/\text{dL}$). Includes a wide range of services: mailings, phone consultations, in-home consultations, environmental sampling and analysis, and case coordination and technical assistance with health care providers. Provide on-going analytical capacity to Public Health Centers and other low-income health centers to test for blood lead levels in children.	\$ 12,000.00
KCSC	Juvenile Courtroom Support	Court support staff ensures the efficient running of the court & assist youth & families navigate court process.	\$ 1,132,000.00
DPH	Early Intervention Program (EIP)	Public Health Nursing services for high risk families involved with or referred by DSHS Children's Administration to reduce the risk of abuse or neglect of children in the home, enhance parenting skills and family functioning and reduce stress on the family.	\$1,035,000.00
KCSC	Family Treatment Court	Family Treatment Court is an alternative to regular dependency court and is designed to improve the safety and well-being of children in the dependency system by providing parents access to drug and alcohol treatment, judicial monitoring of their sobriety and individualized services to support the entire family.	\$ 534,400.00
DJA	Step Up Program	Group intervention program for youth domestic violence toward family members. The program is court based and designed to serve youth in the juvenile justice system who are on diversion, probation or At-Risk-Youth petitions referred for DV toward parents/family members, as well as self or community referred families. The program uses a 21 session cognitive behavioral, skills and strengths based curriculum including teen groups, parent groups and family groups. A Restorative Practice model is used to engage change process.	\$ 206,715.00
KCSC	Interpreters	Interpreters assist litigants during attorney-client consultations and arraignments, hearings, trials, and other court events. They also interpret for deaf jurors, classes for parents and truant youth, and appointments with court personnel. Interpreter services have been provided in 143 languages.	\$ 158,700.00
DCHS	Family Reunification Program Pilot	Family and Youth Focused in-home family reunification and diversion support. To provide prevention services and family reunification services to youth and young adults at risk of homelessness or homeless.	\$ 150,000.00
DCHS	Project SAFE	Project SAFE: phone-based clinical consultation for parents/caregivers responsible for a youth ages 12-17 in crisis or youth who have run away from home or who are at risk of running away. Referrals are made directly from parents, via sister agencies or through National Safe Place. The family therapist assists parents and caregivers in developing an action plan that confronts issues that may be underlying their teen's behaviors, often making referrals for ongoing outside individual or family counseling.	\$ 150,000.00

King County Programs for Families

Dept.	Program/Project	Description	Total Program Budget*
DCHS	Coming Up	Focus upon parenting youth. Provides rental assistance and case management to maintain non-time limited housing.	\$ 143,000.00
KCSC	Parent for Parent Program	Parent to Parent Program assists families by providing peer parents who are approachable and a culturally relevant connection to the dependency process. The program promotes early engagement in the dependency process which is critical for improving the chance of reunification.	\$ 95,000.00
KCSC	Dependency Mediation	This program provides mediation for families in the dependency system at the YSC courthouse to help resolve issues related to child abuse and neglect prior to adjudication by the court.	\$ 94,500.00
KCSC	FJCIIP	This program ensure the efficient running of the dependency related services and court processes and makes recommendations for improved programs and efficiencies.	\$ 85,200.00
DCHS	Open Doors	Focus upon parenting youth. Provides rental assistance and case management to maintain non-time limited housing.	\$ 85,000.00
KCSC	Juvenile Justice 101	The Juvenile Justice 101 program helps close the information and support gap for families at the initial court phase of the juvenile justice process. Using a peer support model, the program informs families of court basics and community resources through onsite orientation and one-on-one support. The community outreach component of the JJ 101 program has worked with the Somali community through a series of workshops and community meetings. Additional grant funding will continue the outreach with the Somali community and expand into the Hispanic community in 2014 and 2015.	\$ 55,000.00
KCSC	Family Court Services	MSW level social workers provide mediation, evaluation, domestic violence assessment and other services to families with children who are involved in the family law court process. FCS also provides adoption related services including assistance with paperwork, confirmations of consent, and non-identifying adoption searches.	\$ 1,977,900.00
KCSC	UFC Judges	King County Superior Court Judges assigned to handle family law cases with children.	\$1,229,800.00
KCSC	Family Law Commissioners	Commissioner assigned to family law handle pre-trial family law matters and child support related cases.	\$ 883,000.00
KCSC	Family Law Facilitators, Early Resolution Case Managers & Family Law Orientation	Facilitators assist family law pro-se parties (people not represented by an attorney) by explaining forms and processes. Inform parties of possible settlement options and review court documents prior to their submittal to court. Family Law Orientation is a one-hour orientation class for pro-se litigants in family law cases which provides them with information on court rules, court processes and resources to help them throughout their case. All of these programs work together to assist pro se families in family law matters.	\$ 556,600.00
KCSC	Family Law Support	Court support staff ensures the efficient running of the court and assist youth and families navigate the court process.	\$ 394,600.00
KCSC	Parent Seminar	This is a three-hour seminar required for all parents that are party to a family law case. The seminar provides detailed information on how to write a parenting plan and what kinds of issues that they should expect.	\$ 141,100.00
KCSC	Parent Youth Connections Seminar (PYCS)	Thirteen hours of education, skill building and resource connection. Evidence-based program for low risk and diversion youth. Family member participation required.	\$ 129,500.00
DCHS	Youth Development Services	Provides case management and youth development services	\$ 10,000.00

King County Document Scan, Early Childhood

The Forum for Youth Investment conducted a limited scan of key planning documents developed by various entities across King County. Each of these plans outlines priorities for improving services and supports to children, youth and families living in King County. In this review, we summarized the following questions: How are core elements of these plans currently funded? How do they define outcomes? What ages are they focused on (and broken down by our age categories)? What level of intervention do these plans address (youth development, prevention, intervention, treatment, etc)? Is it King County government led? Which agencies? Do these plans emphasize any of the common causes generated in community forums?

Key Document	Current Funding	Defined Outcomes	Ages of Focus	Level of Intervention	King County Government Leadership	Common Cause Connections
King County Health & Human Services Transformation Plan (2014 – 2018)	KC Department of Community & Human Services	<u>Thriving</u> <ul style="list-style-type: none"> • Increase the number of healthy years that residents live. • Protect the health of communities • Increase supports for optimal growth & development of children & youth • Network of integrated & effective health and human services is available to people in need 	All ages.	Prevention, Intervention, Treatment with greater emphasis on prevention than in previous years	King County Department of Community and Human Services and Public Health-Seattle & King County City governments (Seattle, Bellevue, Sea Tac)	Health Barriers to Access Institutional Structures
King County Mental Illness & Drug Dependency Action Plan	King County Council	<u>Thriving</u> <ul style="list-style-type: none"> • Increased access to mental health & substance abuse services 	0 – 18	Intervention, Treatment	KC Department of Community & Human Services	Family/Parent Challenges Safety Mental Health Barriers to Access Lack of Resources