

An aerial photograph showing a large area of flooding. A river flows through the center, with water overflowing its banks and inundating surrounding fields and some residential areas. The sky is overcast and grey. The text is overlaid on the top half of the image.

Committee of the Whole Briefing

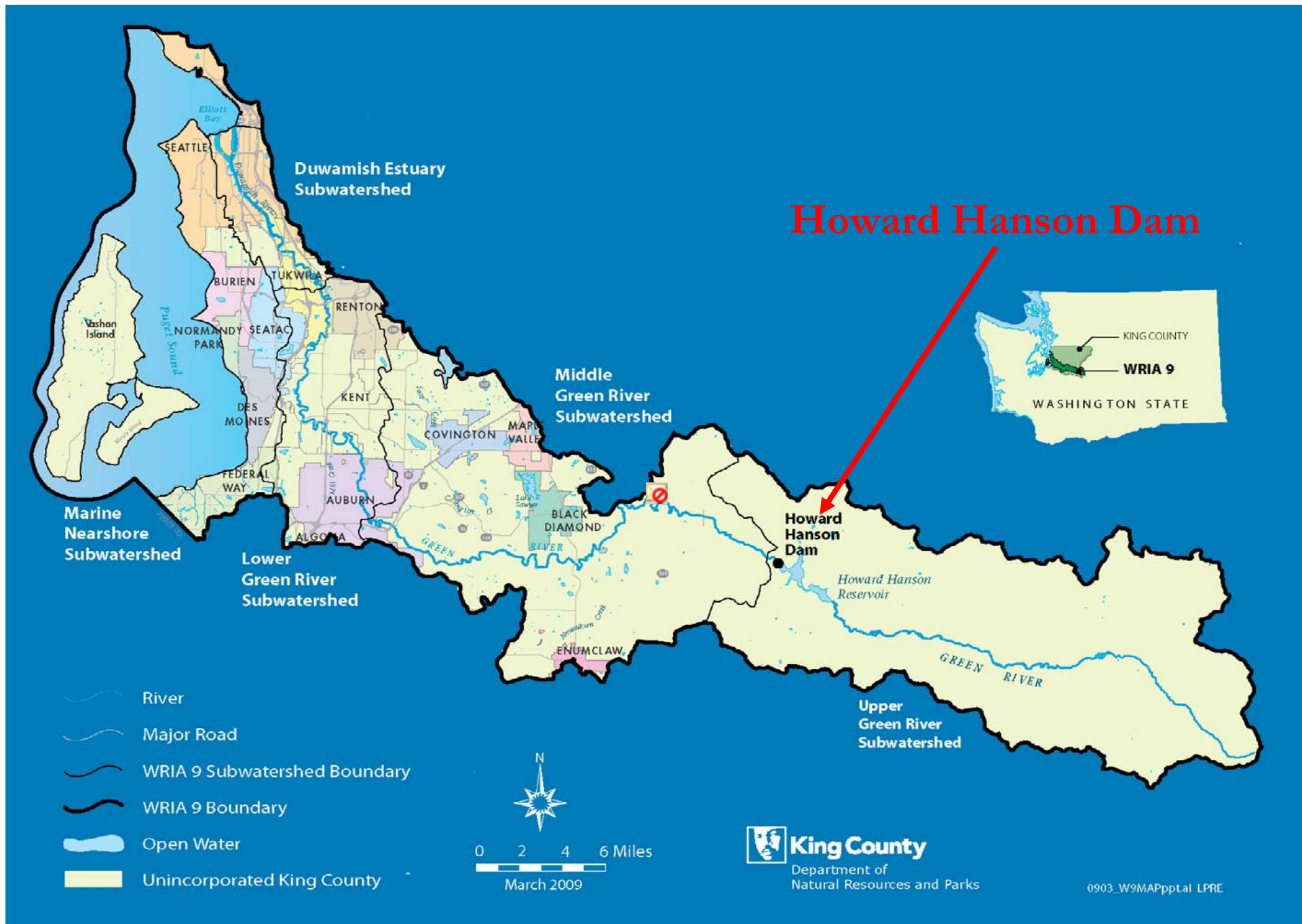
August 26, 2009

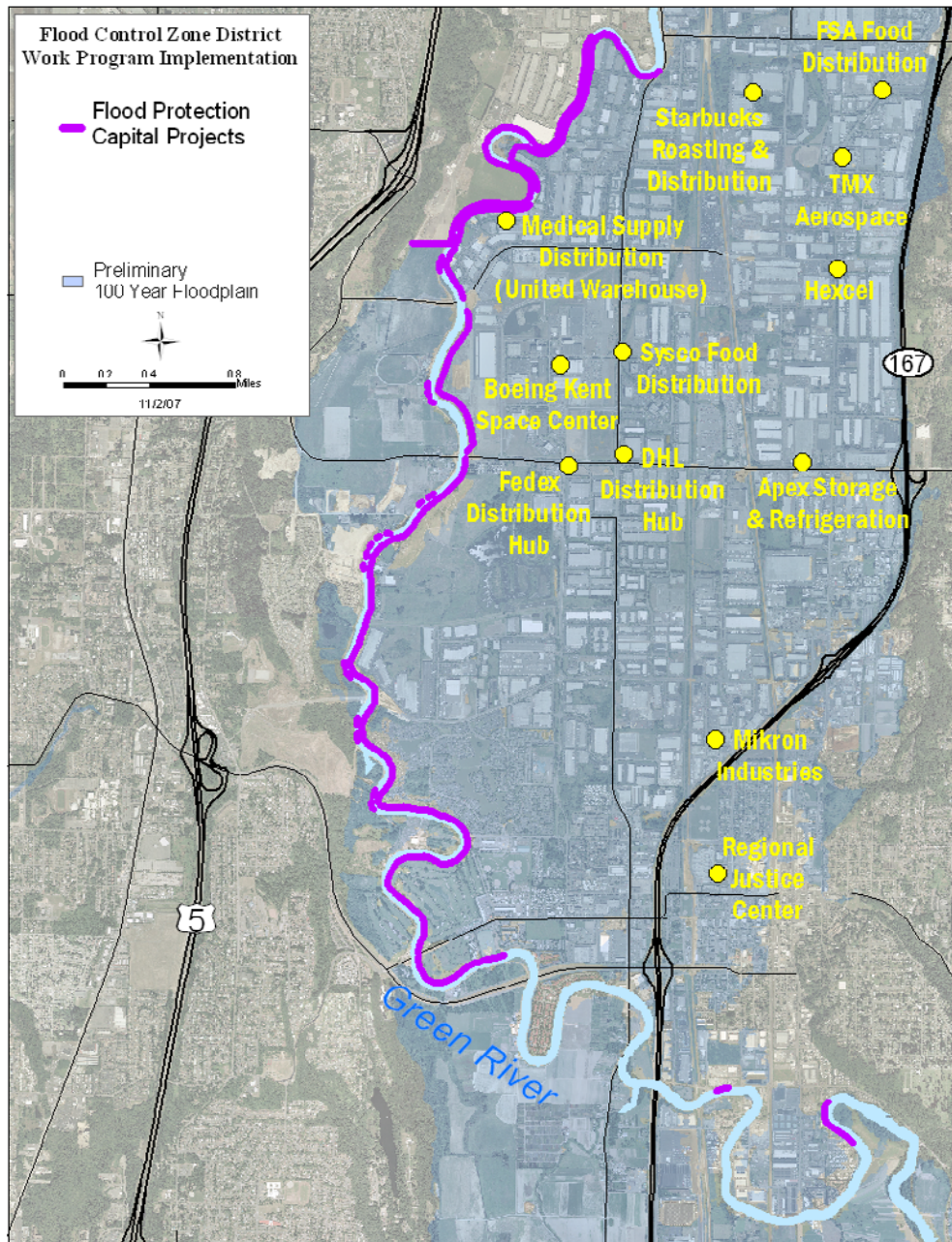
Green River Flooding Briefing

Presenters: Pam Bissonnette, Assistant County Executive
Carolyn Duncan, Communications Director
Mark Wesolowski, PSE Emergency Planning Manager

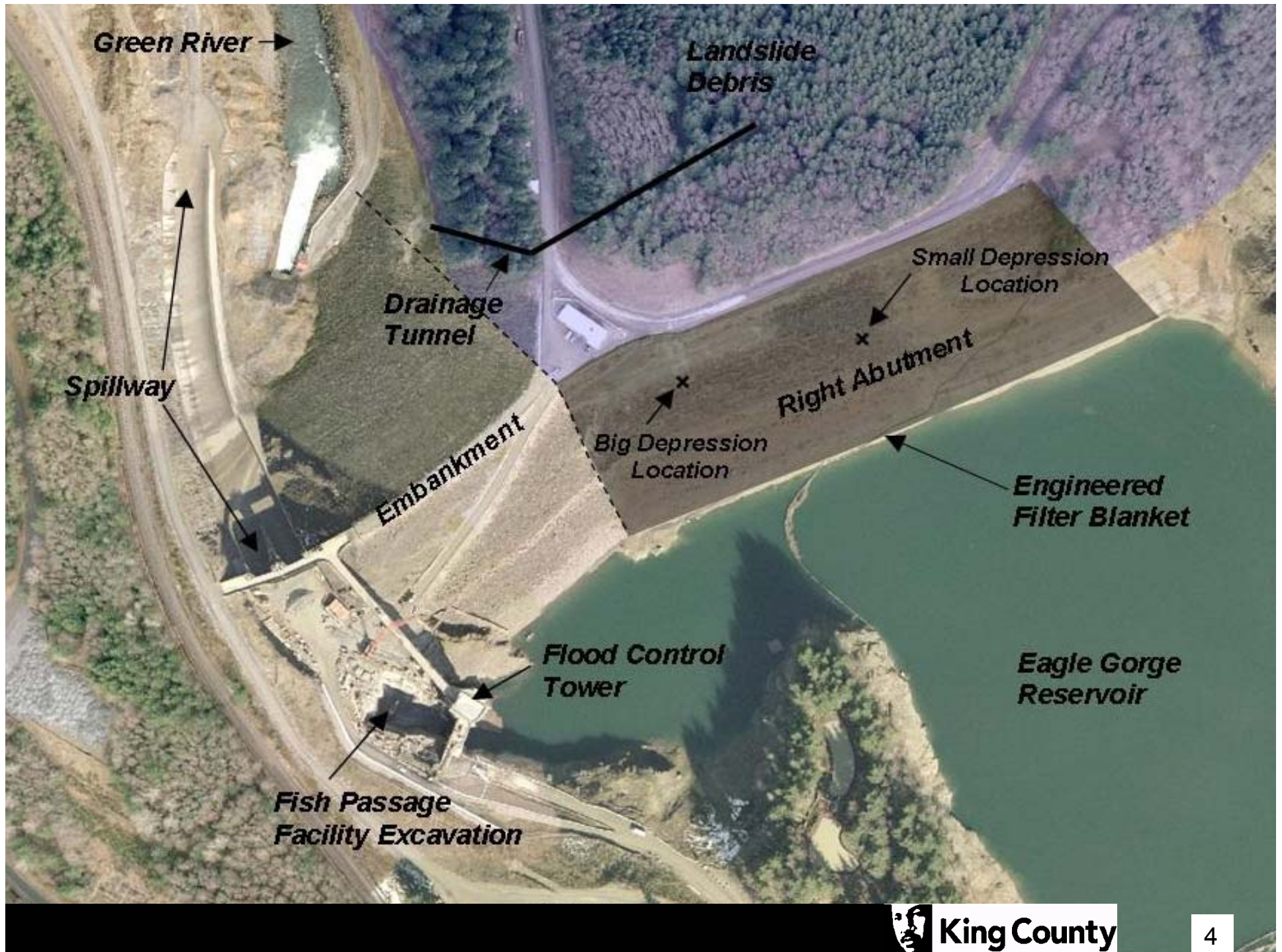


King County





Howard Hanson
Dam protects
the region's
manufacturing and
distribution centers
and public facilities
in the lower Green
River floodplain and
residential areas in
the middle Green
River floodplain





Historic pool level of 1,189 feet on January 8, 2009



King County



When water levels dropped, depressions were found in the abutment



King County

Expected Consequences

- Howard Hanson Dam will not protect the valley as it has since 1962



King County

Expected Consequences



- Levee system downstream not designed for expected flows from Howard Hanson Dam

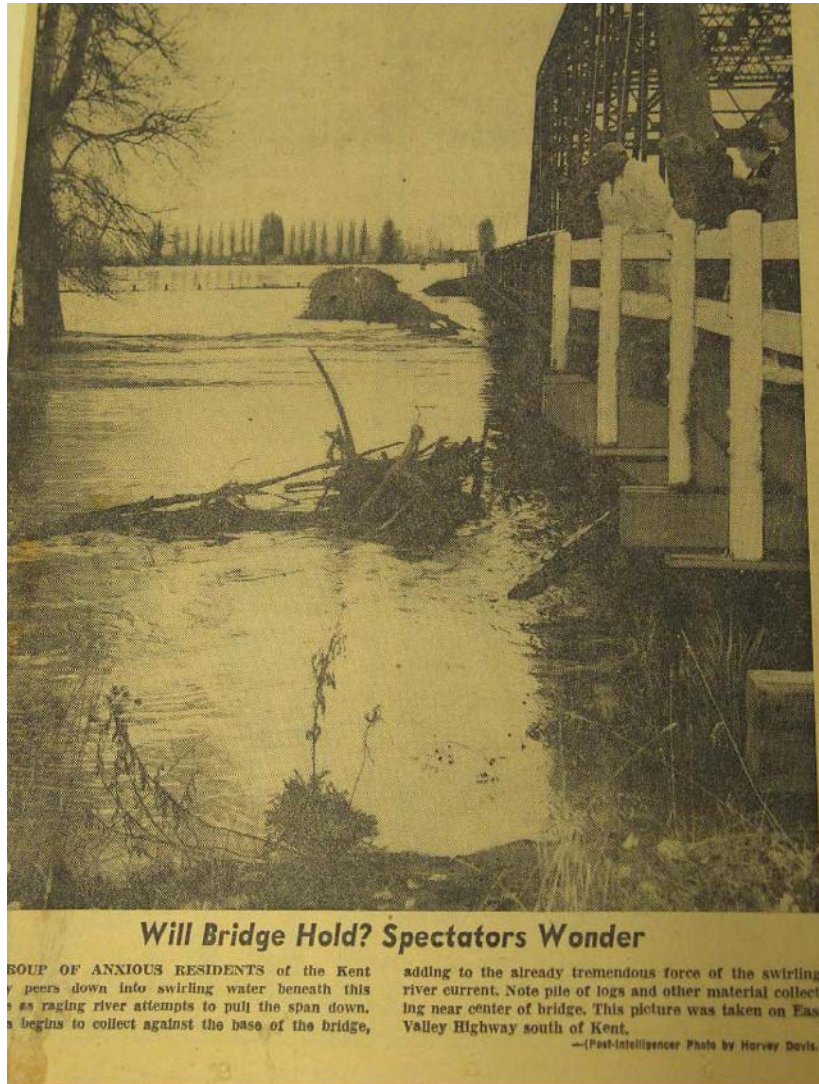


- Levees old and in need of repair; only two years of downstream levee repair projects constructed to date since Flood Control District establishment in 2007



King County

Expected Consequences



- Permanent Howard Hanson Dam repair projected not for 3-5 years according to USACE Expected result: wide spread flooding of Green River Valley for 3-5 years, from 1 to over 10 feet in depth
- Wide spread flooding expected to result in Valley power outages (electricity & gas), sewer system surcharges, water supply interruptions, potential interruptions of communications, major closures of transportation corridors (e.g., Hwy 167, parts of I-5)
- PSE commentary



Expected Consequences



- Flooding due to weather
And
- 2/3s capacity of federal dam may be unusable
And
- Downstream levees not designed for resulting flows



Expected Consequences



- Unique situation where problem with a federal dam is pushed downstream to become a local and regional problem

Tukwila Manufacturing and Industrial Center, 2006



King County

King County Response to Howard Hanson Dam Operational Changes

- Collaborating with the Corps of Engineers to prepare dam operation and inundation scenarios
- Determining flood fight strategies with levees and within river
- Performing evaluation of levee conditions and overtopping locations
- Working with the Corps of Engineers to complete critical levee repairs
- Working with cities of Auburn, Kent, Tukwila and Renton on coordinated planning and communications



Critical Levee Repairs



Build on Completed Work

- 600 Feet – Briscoe #4 in 2007
- 9,300 linear feet at 6 sites in 2008

Implement 2009 Construction

- 2,200 linear feet at Horseshoe Bend, Kent
- Critical repairs at 3 other sites to protect critical public infrastructure and commercial and industrial land uses
- Pursuing Corps partnerships to address the low spots near Auburn

Preparing for 2010 Levee Setbacks

- Acquire sufficient right of way to set back the levee during 2010
- 18,000 linear feet of construction at 14 sites
- Corps ERP partnership – Upper Russell



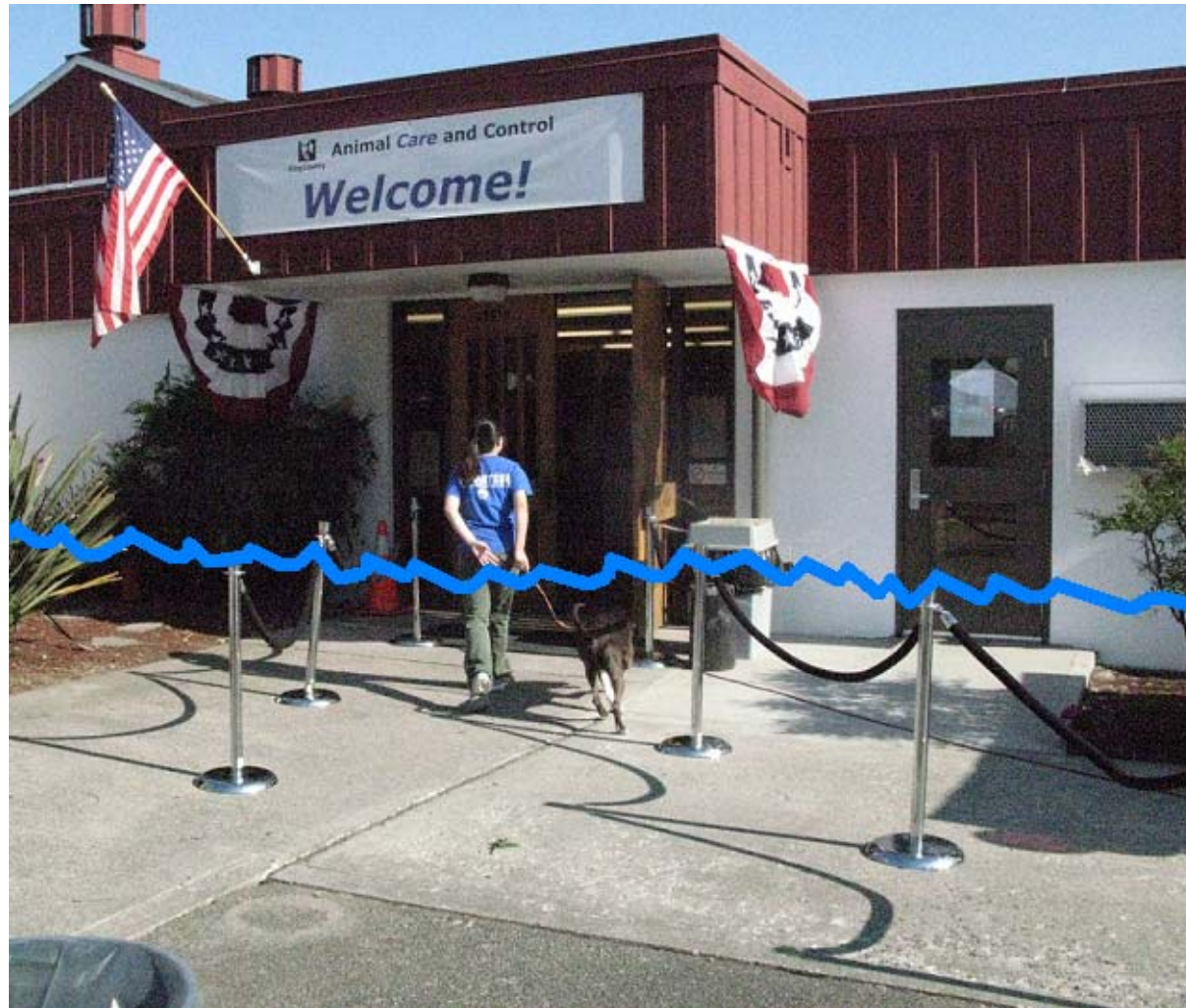
King County

Owned General Government Buildings in Flood Area

- **Maleng Regional Justice Center**
 - Flood levels will range from 0' to 4' (Pmx Planning)
- **Aukeen Court**
 - Flood levels will range from 0' to 1' (Pmx Planning)
- **Animal Shelter**
 - Flood levels will range from 0' to 3' (USACE Flood Map)
- **Black River Building**
 - Flood levels will range from 0' to 7' (Pmx Planning)
- **Earlington Building**
 - Flood levels will range from 0' to 10' (Pmx Planning)



Kent Animal Shelter, projected flood levels, 2-3 feet



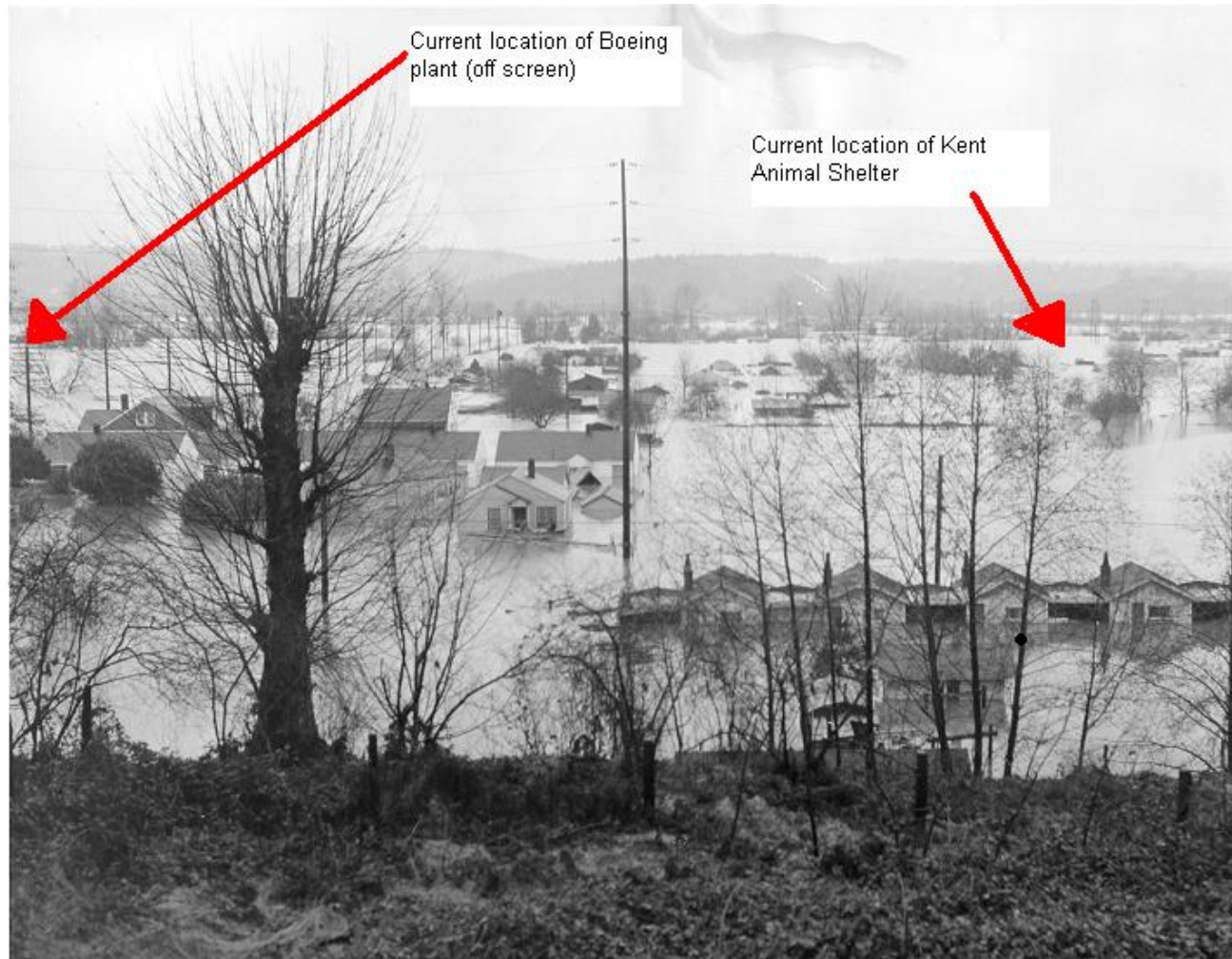
King County

Elections (Earlington Building) Projected Flood Levels



King County

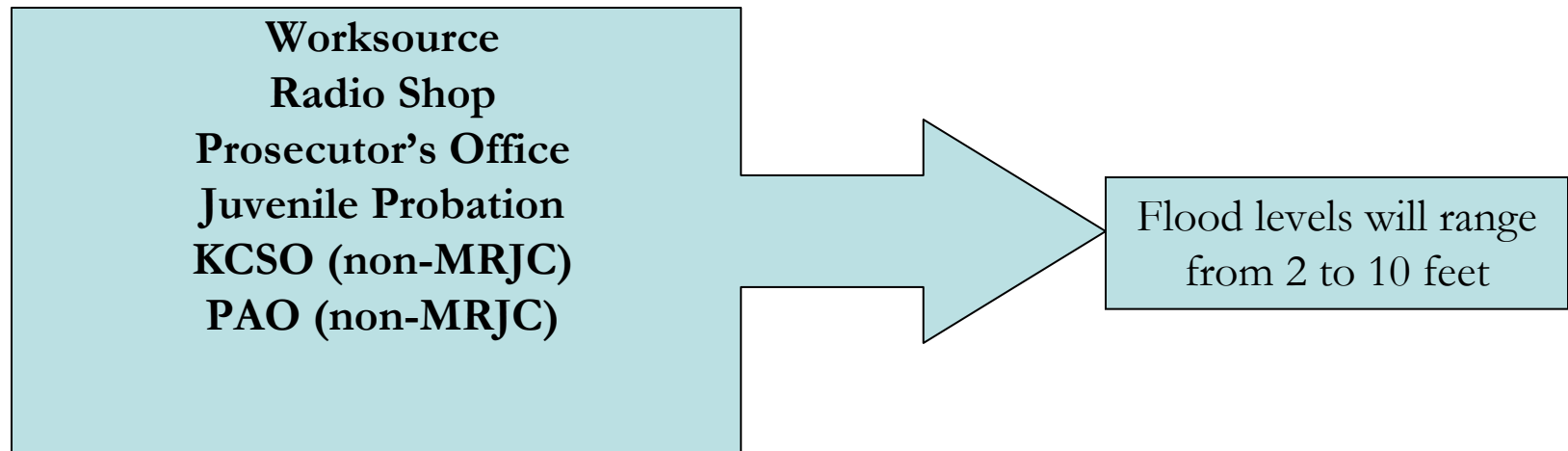
Kent/Renton Valley Flood, December 1946



King County

Leased General Government Buildings in Flood Area

- Multiple Public Health Clinics
 - Flood levels will range from 0' to 4'
 - Relocation efforts underway



King County Response to Howard Hanson Dam Operation Changes

- Determination of needed resources:
 - Supplemental in preparation for King County
 - Supplemental request of the Flood Control District
 - Pre-request for state and federal resources now; advanced measures
 - Requesting state and federal commitment for reimbursement when flooding occurs
- King County early Emergency Proclamation: faster procurement; permitting
- Working with Valley cities, U.S. Army Corps of Engineers, FEMA, State Emergency Management, Mutual Aid Agreements, PSE, others
- Reviewed organization and decision-making



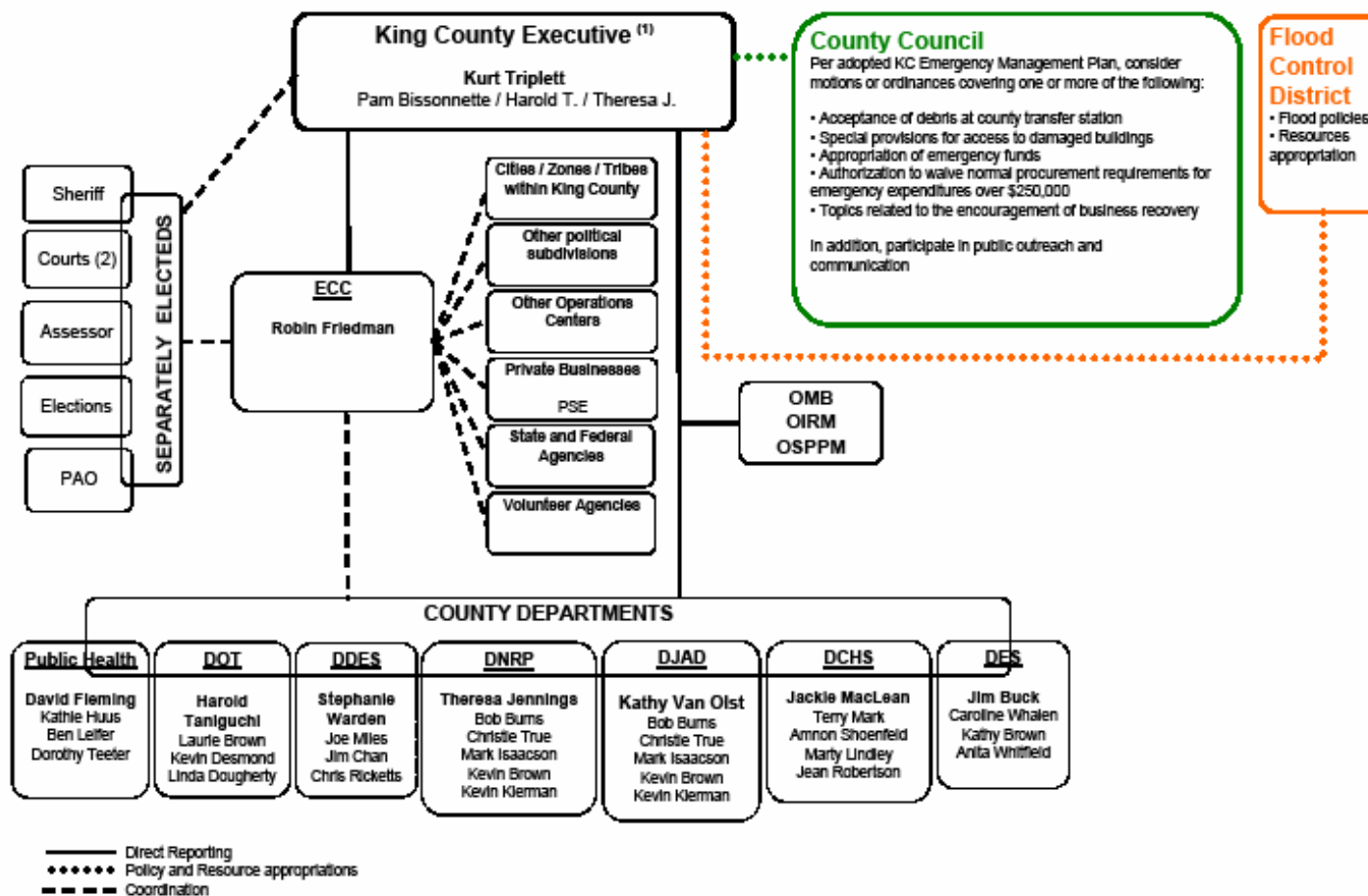
King County

Potential Federal and State Reimbursements

- **FEMA Rules**
 - o For costs after Presidential Emergency Declaration
 - o Covers 75% of what is eligible
 - o Examples of eligible costs include temporary evacuation, transport and sheltering; flood fighting costs
 - o Examples of ineligible costs include permanent relocations, upgrades and equipment; public education and communications; training
- **Emergency Proclamations and Declarations**
 - o Local & Regional: each jurisdiction does individually
 - o State: may cover up to an additional 12.5% of reimbursement of eligible costs
 - o Federal: usually only after emergency happens and after local and state emergency proclamations
- **Requesting Pre-Commitments for Reimbursement**
- **Current Estimates from \$10-\$35 million**



King County Government Emergency Management Linkage Chart

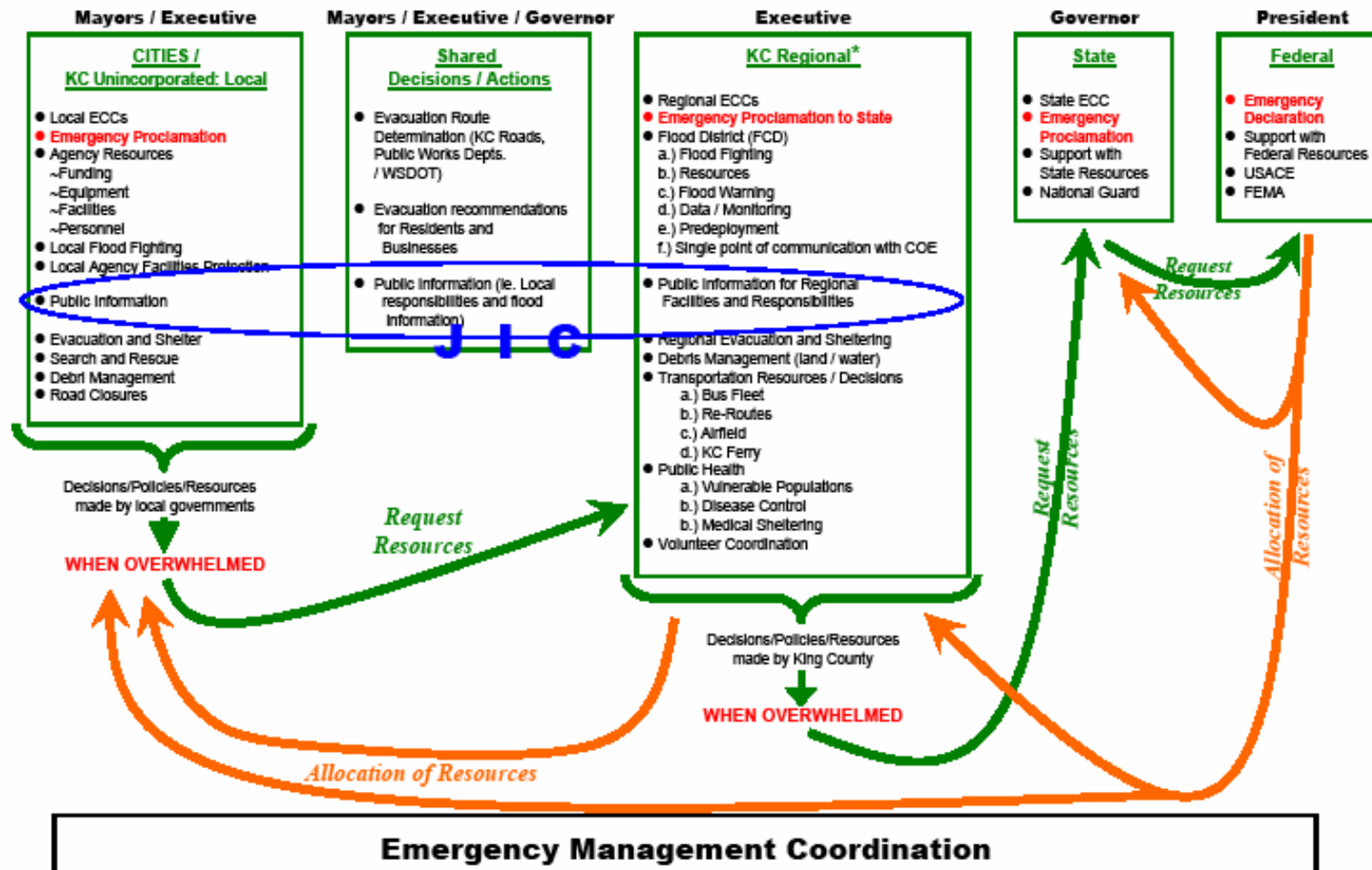


(1) See "Green River Flood Emergency Management Coordination Responsibilities and Decisions for Response" chart



King County

Green River Flood Emergency Management Coordination Responsibilities and Decisions for Response



* PSE and SCL are regional providers for power

REVISED: 8/19/2009



King County

Public Outreach and Communications

Pre-flood Communication

Created external and internal communication plans

An aggressive goal for external

- Inform, educate and move residents to action
- Recommend a mix of earned (free) media and paid (advertising) media

Coordinating with local, state and federal communications leads

- Puget Sound Energy, Red Cross, others

Media relations

- General goal is a story per week
- Nine news releases produced equivalent to \$500,000 worth of coverage this year

Outreach

- Hosting regional Web site www.kingcounty.gov/floodplan
- Bilingual brochure and Web pages
- Letter and brochure mailed to 165,000 addresses
- Generating response—residents and businesses: am I in inundation area

Survey will help refine messages and define best mediums



King County

Outreach and Communications Plan

Summer/Fall 2009

Pump up the volume-post Labor Day

- More news stories—survey results, immigrant outreach, events
- KCTV producing programming
- Events—town hall, workshops, joint chamber meeting
- Sept. 14 kick off with state and federal electeds
- Another mailing
- Mid-Oct launch of annual Take Winter by Storm

Challenge: Time and money

- A lot of existing materials on general hazards
- Extraordinary situation, multi-year risk—Green River specific needed
- Partner contributions likely—PSE, corporations, FEMA
- Much of the paid media we buy will see 100% match

Internal Communication

- Speakers Bureau, Brown Bag presentations
- PowerPoint and video
- Employee Web site launched Sept. 1—accessible from home
- Working with Human Relations—policies



King County

King County Activities Underway from Now Until Flood Season

- Complete plans for sheltering, evacuation, transport and flood fighting
- Fully assess emergency operations of critical facilities
- Test readiness through table-top and training exercises
- Request pre-declaration of emergency
- Extensive public information & outreach
- Continue monitoring Howard Hansen status with the Corps of Engineers
- Flood Warning Center on alert



King County

Response During Flood Emergency



- Activation of King County Emergency Response Plan
- Activation of Joint Information Center
- Activation of Regional Emergency Response Plan



King County

King County Response During Flood Emergency



- Open Flood Warning Center earlier in response to major storm forecasts and issue flood warning notifications sooner
- Increased Flood Patrols by King County, Corps of Engineers and City staff
- Automated callouts through MyStateUSA



King County

Preparedness – Elected Officials

- Action on emergency ordinance
- Expeditious consideration and action on Green River flooding supplemental
- Review council roles outlined in King County Emergency Management Plan and Flood Control District Agreement
- Provide consistent messages to the public, working with the regional Joint Information System and Center, to result in public preparation now, and reasoned and calm responses during a flood emergency
- Schedule additional briefings for specific significant flood responses, e.g. protection of county facilities in the Green River Valley, continuity of government operations, recovery



Preparedness – What Can Citizens Do?

- Sign up for automated flood notifications through MyStateUSA
- Buy a Weather Radio; battery powered AM Radio
- Purchase flood insurance (30 day wait period)
- Check sewer back-up insurance
- Determine evacuation route
- Create a disaster plan for you and your family

