

7/2/2020

KL - BC Adult

Sponsor: Lambert

am

Proposed No.: 2019-0413

AMENDMENT TO STRIKING AMENDMENT S3 TO PROPOSED ORDINANCE 2019-0413, VERSION 1

In Attachment D, on page 46, strike line 461 and insert:

""The following uses are prohibited in the Village at Redmond Ridge:
Gasoline Service Stations, and any associated underground fuel storage tanks, and
Adult Entertainment Business.""

In Attachment D, on page 46, after line 477 insert:

"5. Add P-Suffix condition BC-Pxx to the following parcels:

7202250140	7202320200
7202250240	7202320220
7202320040	7202320230
7202320050	7202370010
7202320060	7202370020
7202320070	7202450010
7202320080	7202450020
7202320190	720245TRCT
720237TRCT	

P-Suffix condition BC-Pxx shall read as follows:

"Adult entertainment businesses are prohibited.""

Renumber the remaining sections consecutively and correct any internal references accordingly

In Attachment D, on page 47, line 486, after "**prohibit**" insert "**adult entertainment businesses,**

and"

19


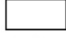



20 In Attachment D, on page 47, line 487, after "**tanks**" strike "**due to concerns with potential**

21 **contamination of private water well systems in the adjacent rural area**"

22

23 In Attachment D, on page 49, strike the map on page 49 and insert: "

Map Amendment 7.b: Bear Creek UPD Community Business Land Use and Zoning Zoning Map Amendment

-  Study Area
-  Parcels
-  Incorporated Area
-  Waterbodies
-  Urban Growth Area Boundary

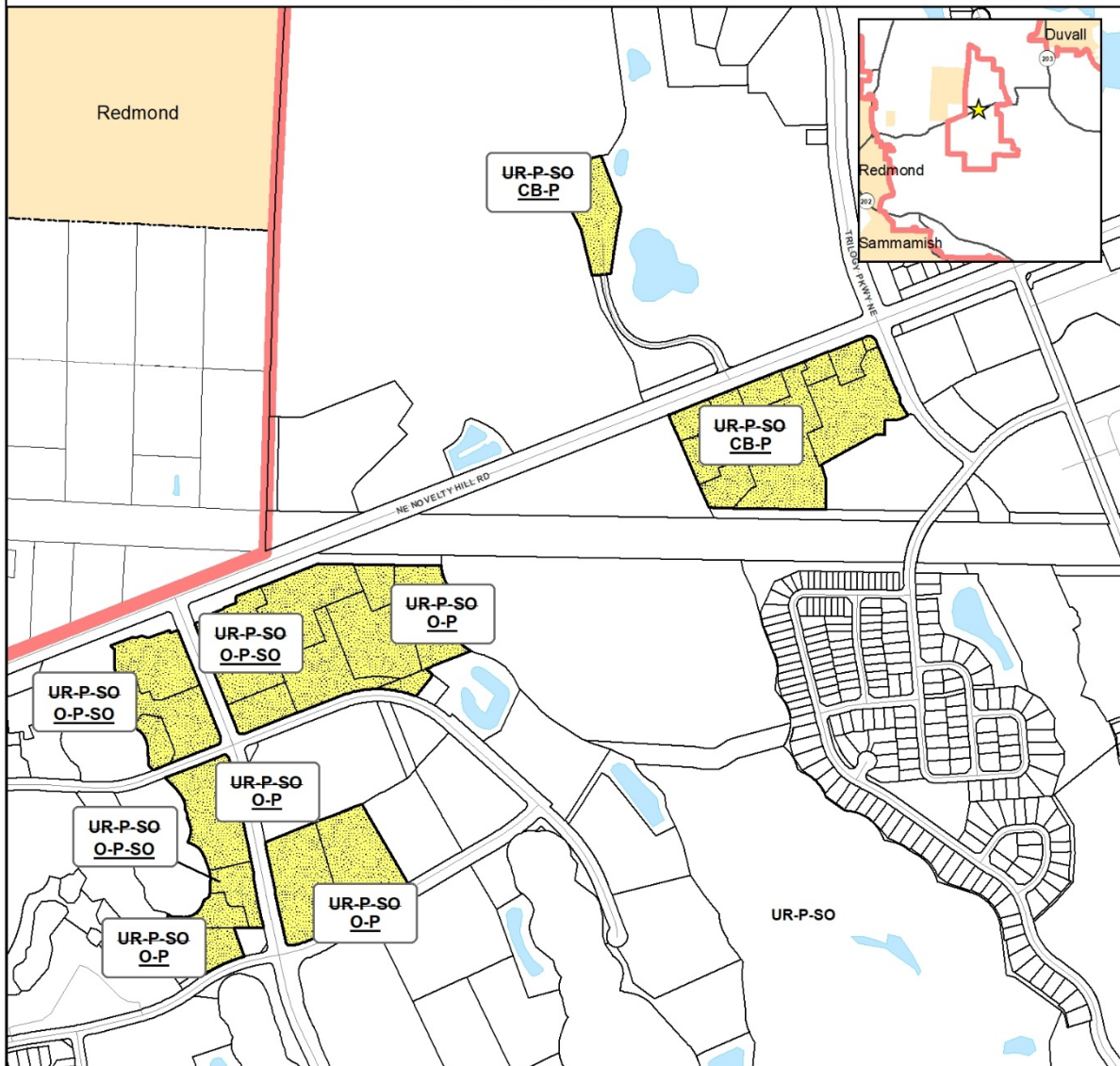
- UR Urban Reserve
- CB Community Business
- O Office

P = P-Suffix Condition
SO = Special District Overlay

0 500 1,000
Feet



Date: 6/26/2020



The information included on this map has been compiled by King County staff from a variety of sources and is subject to change without notice. King County makes no representations or warranties, express or implied, as to accuracy, completeness, timeliness, or rights to the use of such information. This document is not intended for use as a survey product. King County shall not be liable for any general, special, indirect, incidental, or consequential damages including, but not limited to, lost revenues or lost profits resulting from the use or misuse of the information contained on this map. Any sale of this map or information on this map is prohibited except by written permission of King County.

27 **EFFECT:** Amends a proposed P-suffix development condition limiting the uses in the Village at
28 Redmond Ridge in Map Amendment 7.b to also prohibit Adult Entertainment Business in the CB
29 zone. Adds new P-Suffix prohibiting Adult Entertainment Businesses in the Redmond Ridge
30 Business Park in the O zone.