

King County Superior Court  
Criminal Department Statistical Report

May 2012

Department of Judicial Administration  
Prepared by: Shiquan Liao, Ph.D., Statistician

Release date: June 20, 2012

**Report #: CRM-2012-05**

## Terminology

### **Age of Pending Case**

Time (days) from filing to resolution, less suspense time if applicable.

### **Age of Resolved Case**

Time (days) from filing to resolution, less suspense time if applicable.

### **End Pending**

Number of pending cases at the end of reporting period.

### **Net Change in Pending**

The change in number of pending cases (end pending minus previous pending).

### **Pending Case**

A case is defined as pending if it is unresolved and not on suspense status.

### **Previous Pending**

Number of pending cases at the beginning of reporting period.

### **Reactivated Case**

A case returns to active from suspense status during the reporting period.

### **Resolution**

A case is resolved if all issues in the complaint are fully adjudicated. However, a drug court case is reported as resolved only when dispositive document is also filed (completed).

### **Resolution Category**

Five resolution categories are used to report resolution of criminal cases: jury trial (CVJV, AQJV), non-jury trial (CVCT, AQCT), guilty plea (GP, GPAT, GPJT), dismissal (DSM), and other (all other resolution codes). For criminal RALJ cases, the resolution categories are: RALJ decision (CDTA, CDTM, CDTR), dismissal (DSRM), and others (any other resolution codes).

### **Suspended Case**

A case is placed in suspense status (removing from active) during the reporting period.

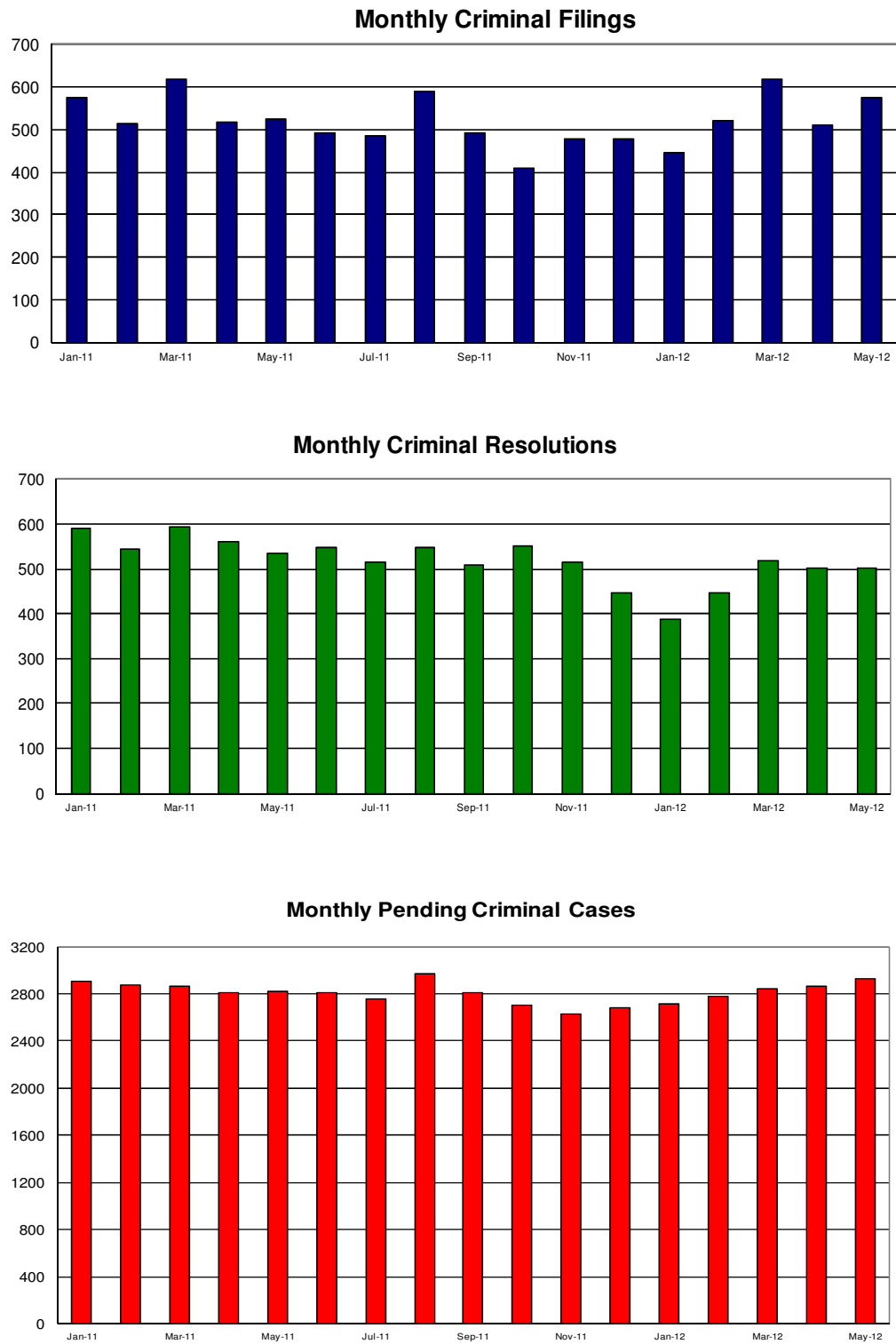
### **Suspense Status**

A case is said to be on suspense status if it is on warrant or appeal.

### **Suspense Time**

Time (days) a case is on suspense status.

Figure 1. Number of Criminal Filings, Resolutions and Pending Caseload by Month



Note: Starting January 2010, RALJ cases are included.

Figure 2. Crime Category as a Percentage of Total Filings by Year

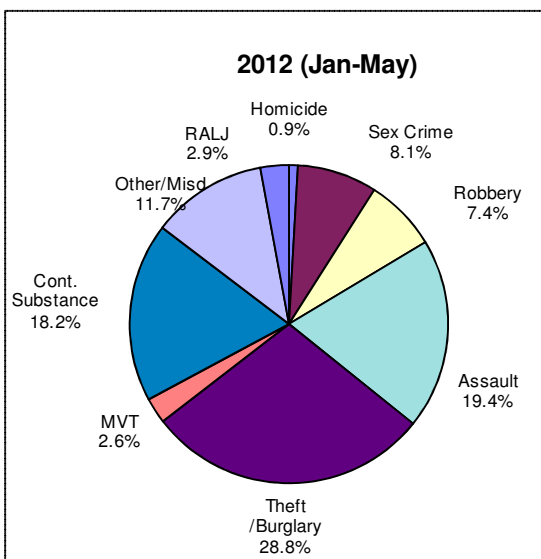
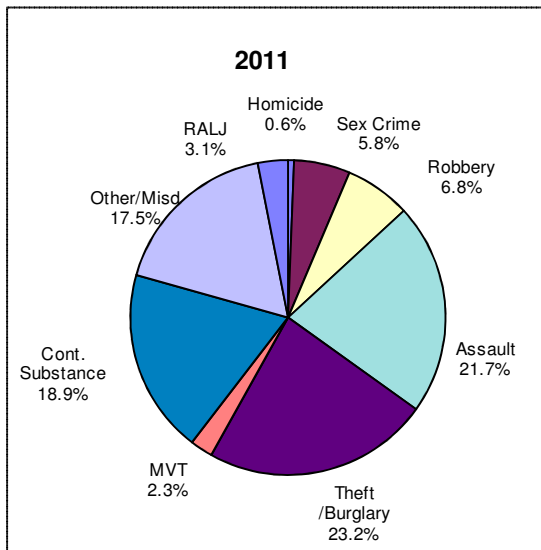
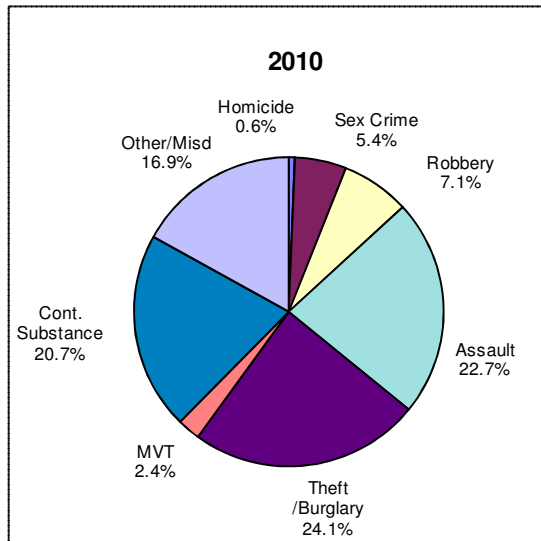


Table 1. Monthly Criminal New Filings by Crime Category (\*)  
King County Superior Court

	Jan	Feb	Mar	Apr	May	Jun	Jul	Aug	Sep	Oct	Nov	Dec	ADJ <sup>(1)</sup>	Annual
<b>Total</b>														
2010	515	554	610	512	587	666	574	563	532	608	535	611	(0)	6867
2011	576	513	620	518	525	492	486	590	491	409	478	478	(+2)	6178
2012 <sup>(2)</sup>	445	522	618	512	576									
<b>Total – DV Subset</b>														
2009	NA	NA	NA	NA	NA	NA	NA	NA	NA	NA	NA	NA	NA	NA
2010	102	67	127	116	92	114	116	100	87	80	78	96	NA	1174
2011 <sup>(2)</sup>	76	82	90	77	92									
<b>Homicide</b>														
2010	4	3	5	5	2	3	2	1	4	9	2	2	(0)	42
2011	3	3	2	1	3	5	3	4	2	3	2	7	(0)	38
2012 <sup>(2)</sup>	4	2	7	4	7									
<b>Homicide – DV Subset</b>														
2010	NA	NA	NA	NA	NA	NA	NA	NA	NA	NA	NA	NA	NA	NA
2011	1	1	0	0	0	1	0	4	2	2	0	0	(0)	11
2012 <sup>(2)</sup>	0	0	0	0	1									
<b>Sex Crime</b>														
2010	31	32	27	24	36	37	39	39	28	19	21	28	(+3)	364
2011	34	32	22	36	23	28	23	30	22	28	26	52	(0)	356
2012 <sup>(2)</sup>	34	49	34	60	40									
<b>Sex Crime – DV Subset</b>														
2010	NA	NA	NA	NA	NA	NA	NA	NA	NA	NA	NA	NA	NA	NA
2011	6	4	2	4	3	3	0	4	2	7	3	1	(0)	39
2012 <sup>(2)</sup>	2	6	3	0	3									
<b>Robbery</b>														
2010	54	43	58	42	34	39	32	35	37	33	23	48	(0)	478
2011	50	27	58	29	25	35	23	36	30	34	36	35	(0)	418
2012 <sup>(2)</sup>	33	38	57	19	50									
<b>Robbery – DV Subset</b>														
2010	NA	NA	NA	NA	NA	NA	NA	NA	NA	NA	NA	NA	NA	NA
2011	3	1	3	4	2	1	1	0	1	0	2	0	(0)	18
2012 <sup>(2)</sup>	3	0	1	0	0									
<b>Aggravated Assault</b>														
2010	107	122	125	117	119	138	139	133	136	132	115	137	(+26)	1546
2011	105	84	139	105	108	126	126	117	118	98	101	116	(0)	1343
2012 <sup>(2)</sup>	91	95	110	104	118									
<b>Aggravated Assault – DV Subset</b>														
2010	NA	NA	NA	NA	NA	NA	NA	NA	NA	NA	NA	NA	NA	NA
2011	62	42	86	66	69	80	89	77	71	58	55	36	(0)	791
2012 <sup>(2)</sup>	55	56	74	62	65									
<b>Burglary/Theft /Larceny</b>														
2010	125	149	141	125	126	137	125	137	134	147	115	153	(+12)	1626
2011	147	124	141	114	141	100	119	140	107	86	92	122	(1)	1434
2012 <sup>(2)</sup>	141	134	178	160	156									
<b>Burglary/Theft /Larceny – DV Subset</b>														
2010	NA	NA	NA	NA	NA	NA	NA	NA	NA	NA	NA	NA	NA	NA
2011	14	8	11	8	7	7	11	9	7	5	3	0	(0)	90
2012 <sup>(2)</sup>	6	5	6	8	2									
<b>Motor Vehicle Theft</b>														
2010	9	8	12	10	10	17	13	13	17	21	13	18	(0)	161
2011	14	20	12	9	5	9	12	18	12	10	13	11	(0)	145
2012 <sup>(2)</sup>	18	19	15	5	13									
<b>Motor Vehicle Theft – DV Subset</b>														
2010	NA	NA	NA	NA	NA	NA	NA	NA	NA	NA	NA	NA	NA	NA
2011	1	0	0	0	0	0	1	2	1	0	1	1	(0)	7
2012 <sup>(2)</sup>	1	1	1	0	1									

(\*) The highest crime category in a case’s history is used to classify cases. For example, a case charged with homicide at any time in the case’s history is reported as a homicide regardless of whether the charge is reduced at resolution.

(1) “ADJ” = year-end adjustment.

(2) Reflects all documents received by **06/15/2012**.

(3) DV Subset includes cases with a DV flag in at least one of the charges within the specific crime category at the time of the reporting.

Table 1 (cont.). Monthly Criminal New Filings by Crime Category <sup>(\*)</sup>  
King County Superior Court

	Jan	Feb	Mar	Apr	May	Jun	Jul	Aug	Sep	Oct	Nov	Dec	ADJ <sup>(1)</sup>	Annual
<b>Controlled Substance</b>														
2010	80	86	127	98	154	188	124	91	74	115	130	115	(-2)	1380
2011	120	108	107	99	104	97	65	120	100	82	99	67	(1)	1169
2012 <sup>(2)</sup>	57	102	147	88	93									
<b>Controlled Substance - DV Subset</b>														
2010	NA	NA	NA	NA	NA	NA	NA	NA	NA	NA	NA	NA	NA	NA
2011	0	0	0	0	0	0	0	0	0	0	1	0	(0)	1
2012 <sup>(2)</sup>	0	2	0	0	1									
<b>Others/Misdemeanor</b>														
2010	94	96	100	76	87	92	93	96	88	115	101	96	(-40)	1094
2011	83	97	123	110	97	71	99	108	84	57	99	56	(0)	1084
2012 <sup>(2)</sup>	51	64	58	61	80									
<b>Others/Misdemeanor - DV Subset</b>														
2010	NA	NA	NA	NA	NA	NA	NA	NA	NA	NA	NA	NA	NA	NA
2011	13	11	25	38	11	22	14	8	5	7	13	52	(0)	219
2012 <sup>(2)</sup>	9	12	5	7	19									
<b>Criminal RALJ</b>														
2010	11	15	15	15	19	15	7	18	14	17	15	14	(0)	176
2011	20	18	16	15	19	21	16	17	16	11	10	12	(0)	191
2012 <sup>(2)</sup>	16	19	12	11	19									
<b>RALJ - DV Subset</b>														
2010	NA	NA	NA	NA	NA	NA	NA	NA	NA	NA	NA	NA	NA	NA
2011	2	0	0	0	0	0	0	0	0	0	0	0	(0)	2
2012 <sup>(2)</sup>	0	0	0	0	0									
<b>KNT Filing as % of Total</b>														
2010	36%	40%	40%	39%	36%	38%	40%	36%	43%	39%	34%	41%		38%
2011	40%	42%	46%	43%	44%	45%	44%	41%	43%	47%	41%	47%		44%
2012 <sup>(2)</sup>	41%	41%	39%	40%	43%									

(\*) The highest crime category in a case's history is used to classify cases. For example, a case charged with homicide at any time in the case's history is reported as a homicide regardless of whether the charge is reduced at resolution.

(1) "ADJ" = year-end adjustment.

(2) Reflects all documents received by **06/15/2012**.

(3) DV Subset includes cases with a DV flag in at least one of the charges within the specific crime category at the time of the reporting.

Table 2. Monthly Criminal Case Resolutions by Crime Category  
King County Superior Court

	Jan	Feb	Mar	Apr	May	Jun	Jul	Aug	Sep	Oct	Nov	Dec	ADJ <sup>(1)</sup>	Annual
<b>Total</b>														
2010	535	528	582	587	554	556	597	601	570	599	454	510	(+70)	6743
2011	590	546	595	560	536	549	514	547	508	552	514	446	(+16)	6463
2012 <sup>(2)</sup>	388	447	520	502	501									
<b>Total – DV Subset</b>														
2010	NA	NA	NA	NA	NA	NA	NA	NA	NA	NA	NA	NA	NA	NA
2011	109	103	49	121	105	92	110	122	117	108	102	89	(0)	1174
2012 <sup>(2)</sup>	65	78	113	89	85									
<b>Homicide</b>														
2010	6	4	2	4	6	7	1	7	3	7	7	3	(0)	57
2011	5	6	3	5	4	3	2	5	3	8	4	1	(0)	49
2012 <sup>(2)</sup>	1	5	2	6	3									
<b>Homicide – DV Subset</b>														
2010	NA	NA	NA	NA	NA	NA	NA	NA	NA	NA	NA	NA	NA	NA
2011	0	0	0	0	1	1	0	1	0	0	0	0	(0)	3
2012 <sup>(2)</sup>	0	0	0	2	0									
<b>Sex Crime</b>														
2010	27	30	25	20	32	32	32	22	34	22	27	26	(+4)	333
2011	30	42	21	21	18	19	31	30	36	31	24	41	(+2)	346
2012 <sup>(2)</sup>	37	27	37	39	33									
<b>Sex Crime – DV Subset</b>														
2010	NA	NA	NA	NA	NA	NA	NA	NA	NA	NA	NA	NA	NA	NA
2011	7	7	4	9	1	2	4	5	4	3	3	2	(0)	52
2012 <sup>(2)</sup>	4	2	8	4	4									
<b>Robbery</b>														
2010	27	39	35	58	55	25	55	43	36	42	38	27	(+3)	483
2011	39	38	45	39	33	40	34	31	31	29	34	36	(-1)	428
2012 <sup>(2)</sup>	31	42	34	38	32									
<b>Robbery – DV Subset</b>														
2010	NA	NA	NA	NA	NA	NA	NA	NA	NA	NA	NA	NA	NA	NA
2011	0	1	1	3	0	3	0	1	1	0	2	0	(0)	12
2012 <sup>(2)</sup>	2	2	1	0	0									
<b>Aggravated Assault</b>														
2010	101	112	140	127	98	112	127	138	137	154	95	122	(+22)	1485
2011	117	123	131	121	117	100	107	119	129	133	127	98	(+2)	1424
2012 <sup>(2)</sup>	74	96	137	111	126									
<b>Aggravated Assault – DV Subset</b>														
2010	NA	NA	NA	NA	NA	NA	NA	NA	NA	NA	NA	NA	NA	NA
2011	73	73	35	76	69	62	77	88	90	92	74	42	(0)	819
2012 <sup>(2)</sup>	43	60	81	65	69									
<b>Burglary/Theft /Larceny</b>														
2010	115	107	137	140	123	124	114	151	112	115	92	109	(+17)	1456
2011	122	120	128	129	150	135	112	131	106	151	125	105	(+1)	1515
2012 <sup>(2)</sup>	81	116	112	132	124									
<b>Burglary/Theft /Larceny – DV Subset</b>														
2010	NA	NA	NA	NA	NA	NA	NA	NA	NA	NA	NA	NA	NA	NA
2011	11	6	3	9	13	8	8	9	9	5	10	6	(0)	97
2012 <sup>(2)</sup>	5	4	7	6	6									
<b>Motor Vehicle Theft</b>														
2010	12	12	20	13	7	7	9	13	13	19	6	14	(0)	145
2011	16	10	14	13	12	7	13	9	10	10	9	10	(0)	133
2012 <sup>(2)</sup>	12	8	13	14	20									
<b>Motor Vehicle Theft – DV Subset</b>														
2010	NA	NA	NA	NA	NA	NA	NA	NA	NA	NA	NA	NA	NA	NA
2011	0	0	0	0	0	0	0	1	1	0	1	0	(0)	3
2012 <sup>(2)</sup>	1	0	0	2	0									

The highest crime category in a case's history is used to classify cases. For example, a case charged with homicide at any time in the case's history is reported as a homicide regardless of whether the charge is reduced at resolution.

- (1) "ADJ" = year-end adjustment.
- (2) Reflects all documents received by 06/15/2012.
- (3) "Controlled Substance - Non Drug Court" are drug related cases that have never been accepted into drug court.
- (4) "Controlled Substance - Drug Court" are drug related cases that have been formally accepted into drug court (identified by "Order of Participation").
- (5) DV Subset includes cases with a DV flag in at least one of the charges within the specific crime category at the time of the reporting.

Table 2 (cont.). Monthly Criminal Case Resolutions by Crime Category  
King County Superior Court

	Jan	Feb	Mar	Apr	May	Jun	Jul	Aug	Sep	Oct	Nov	Dec	ADJ <sup>(1)</sup>	Annual
<b>Controlled Substance – Non Drug Court</b>														
2010	103	104	102	96	87	103	108	105	97	88	87	92	(+14)	1186
2011	101	82	111	97	77	102	89	113	78	81	78	74	(+8)	1088
2012 <sup>(2)</sup>	69	67	79	76	81									
<b>Controlled Substance – Non Drug Court DV Subset</b>														
2010	NA	NA	NA	NA	NA	NA	NA	NA	NA	NA	NA	NA	NA	NA
2011	0	0	1	0	1	0	0	0	1	0	0	3	(0)	6
2012 <sup>(2)</sup>	0	0	1	1	1									
<b>Drug Court</b>														
2010	43	14	24	30	34	36	34	23	18	24	15	5	(+2)	302
2011	29	20	21	21	9	16	23	13	15	15	27	6	(0)	218
2012 <sup>(2)</sup>	22	11	21	16	10									
<b>Drug Court -DV Subset</b>														
2010	NA	NA	NA	NA	NA	NA	NA	NA	NA	NA	NA	NA	NA	NA
2011	1	0	0	0	0	0	1	0	0	0	0	0	(0)	2
2012 <sup>(2)</sup>	0	1	1	0	0									
<b>Others/Misdemeanor</b>														
2010	85	82	83	87	101	86	99	84	97	98	78	90	(+8)	1078
2011	111	91	105	100	104	107	88	81	83	80	72	57	(-4)	1075
2012 <sup>(2)</sup>	45	62	68	60	53									
<b>Others/Misdemeanor – DV Subset</b>														
2010	NA	NA	NA	NA	NA	NA	NA	NA	NA	NA	NA	NA	NA	NA
2011	17	12	5	24	20	16	20	17	11	8	12	36	(0)	198
2012 <sup>(2)</sup>	10	9	14	9	5									
<b>Criminal RALJ</b>														
2010	16	24	14	12	11	24	18	15	23	30	9	22	(0)	218
2011	20	14	16	14	12	20	15	15	17	14	14	18	(-2)	187
2012 <sup>(2)</sup>	16	13	17	10	19									
<b>RALJ - DV Subset</b>														
2010	NA	NA	NA	NA	NA	NA	NA	NA	NA	NA	NA	NA	NA	NA
2011	0	2	0	0	0	0	0	0	0	0	0	0	(0)	2
2012 <sup>(2)</sup>	0	0	0	0	0									
<b>KNT Filing as % of Total</b>														
2010	41%	44%	38%	36%	38%	39%	37%	37%	35%	37%	36%	37%		37%
2011	38%	34%	37%	40%	40%	33%	34%	40%	42%	40%	41%	38%		38%
2012 <sup>(2)</sup>	41%	45%	44%	41%	43%									

The highest crime category in a case's history is used to classify cases. For example, a case charged with homicide at any time in the case's history is reported as a homicide regardless of whether the charge is reduced at resolution.

- (1) "ADJ" = year-end adjustment.
- (2) Reflects all documents received by **06/15/2012**.
- (3) "Controlled Substance - Non Drug Court" are drug related cases that have never been accepted into drug court.
- (4) "Controlled Substance - Drug Court" are drug related cases that have been formally accepted into drug court (identified by "Order of Participation").
- (5) DV Subset includes cases with a DV flag in at least one of the charges within the specific crime category at the time of the reporting.



Table 3. Number of Cases Resolved and Resolution Category  
King County Superior Court

Crime Category (*)	Jun 2011	Jul 2011	Aug 2011	Sep 2011	Oct 2011	Nov 2011	Dec 2011	Jan 2012	Feb 2012	Mar 2012	Apr 2012	May 2012
<b>Homicide</b>	<b>3</b>	<b>2</b>	<b>5</b>	<b>3</b>	<b>8</b>	<b>4</b>	<b>1</b>	<b>1</b>	<b>5</b>	<b>2</b>	<b>6</b>	<b>3</b>
Resolved by Jury Trial	3	1	1	0	3	1	1	0	3	0	1	0
Resolved by Non-Jury Trial	0	0	0	0	0	0	0	0	0	0	0	0
Resolved by Guilty Plea	0	1	4	3	5	3	0	1	2	2	4	2
Dismissal	0	0	0	0	0	0	0	0	0	0	1	1
Others	0	0	0	0	0	0	0	0	0	0	0	0
<b>Sex Crime</b>	<b>19</b>	<b>31</b>	<b>30</b>	<b>36</b>	<b>31</b>	<b>24</b>	<b>41</b>	<b>37</b>	<b>27</b>	<b>37</b>	<b>39</b>	<b>33</b>
Resolved by Jury Trial	3	5	2	3	3	5	3	1	3	5	2	1
Resolved by Non-Jury Trial	0	0	0	0	0	0	0	0	0	0	0	0
Resolved by Guilty Plea	15	23	26	32	25	16	32	28	20	26	36	27
Dismissal	1	3	2	1	3	3	6	8	4	6	1	5
Others	0	0	0	0	0	0	0	0	0	0	0	0
<b>Robbery</b>	<b>40</b>	<b>34</b>	<b>31</b>	<b>31</b>	<b>29</b>	<b>34</b>	<b>36</b>	<b>31</b>	<b>42</b>	<b>34</b>	<b>38</b>	<b>32</b>
Resolved by Jury Trial	5	0	4	3	1	1	2	3	3	1	2	1
Resolved by Non-Jury Trial	0	0	0	1	0	0	0	0	0	0	0	0
Resolved by Guilty Plea	31	25	22	23	24	26	29	26	39	29	34	25
Dismissal	4	9	5	4	4	7	5	2	0	3	2	6
Others	0	0	0	0	0	0	0	0	0	1	0	0
<b>Aggravated Assault</b>	<b>100</b>	<b>107</b>	<b>119</b>	<b>129</b>	<b>133</b>	<b>127</b>	<b>98</b>	<b>74</b>	<b>96</b>	<b>137</b>	<b>111</b>	<b>126</b>
Resolved by Jury Trial	10	9	8	5	5	5	8	1	6	11	6	3
Resolved by Non-Jury Trial	1	0	0	1	0	0	0	0	0	0	0	0
Resolved by Guilty Plea	74	89	94	110	107	109	77	64	78	108	90	111
Dismissal	15	9	17	13	21	13	13	9	12	18	15	12
Others	0	0	0	0	0	0	0	0	0	0	0	0
<b>Burglary/Theft/Larceny</b>	<b>135</b>	<b>112</b>	<b>131</b>	<b>106</b>	<b>151</b>	<b>125</b>	<b>105</b>	<b>81</b>	<b>116</b>	<b>112</b>	<b>132</b>	<b>124</b>
Resolved by Jury Trial	6	3	6	3	2	6	0	6	4	1	2	5
Resolved by Non-Jury Trial	1	1	0	1	1	0	0	0	0	0	0	0
Resolved by Guilty Plea	100	101	113	91	131	111	91	70	100	93	109	106
Dismissal	19	7	12	11	17	8	14	5	12	18	21	13
Others	1	0	0	0	0	0	0	0	0	0	0	0
<b>Motor Vehicle Theft</b>	<b>7</b>	<b>13</b>	<b>9</b>	<b>10</b>	<b>10</b>	<b>9</b>	<b>10</b>	<b>12</b>	<b>8</b>	<b>13</b>	<b>14</b>	<b>20</b>
Resolved by Jury Trial	0	0	0	0	0	0	0	0	0	0	0	0
Resolved by Non-Jury Trial	0	0	0	0	0	0	0	0	0	0	0	0
Resolved by Guilty Plea	6	11	6	9	7	9	9	11	7	12	13	14
Dismissal	1	2	3	1	3	0	1	1	1	1	1	6
Others	0	0	0	0	0	0	0	0	0	0	0	0
<b>Controlled Substance - Non Drug Court<sup>(1)</sup></b>	<b>102</b>	<b>89</b>	<b>113</b>	<b>78</b>	<b>81</b>	<b>78</b>	<b>74</b>	<b>69</b>	<b>67</b>	<b>79</b>	<b>76</b>	<b>81</b>
Resolved by Jury Trial	3	3	3	3	2	4	1	0	3	3	1	0
Resolved by Non-Jury Trial	0	0	2	0	0	0	1	1	1	1	0	0
Resolved by Guilty Plea	81	74	83	65	68	65	53	61	59	64	65	63
Dismissal	18	12	25	10	11	9	19	7	4	11	10	18
Others	0	0	0	0	0	0	0	0	0	0	0	0
<b>Drug Court<sup>(2)</sup></b>	<b>16</b>	<b>23</b>	<b>13</b>	<b>15</b>	<b>15</b>	<b>27</b>	<b>6</b>	<b>22</b>	<b>11</b>	<b>21</b>	<b>16</b>	<b>10</b>
Resolved by Non-Jury Trial	6	4	1	4	0	5	2	3	2	5	1	1
Resolved by Guilty Plea	0	2	5	2	3	2	3	1	2	0	3	1
Dismissal	10	17	7	9	12	20	1	18	7	16	12	8
Others	0	0	0	0	0	0	0	0	0	0	0	0
<b>Others/Misdemeanor</b>	<b>107</b>	<b>88</b>	<b>81</b>	<b>83</b>	<b>80</b>	<b>72</b>	<b>57</b>	<b>45</b>	<b>62</b>	<b>68</b>	<b>60</b>	<b>53</b>
Resolved by Jury Trial	1	4	2	2	3	2	2	2	5	5	3	1
Resolved by Non-Jury Trial	0	1	0	0	0	0	0	0	0	0	0	0
Resolved by Guilty Plea	87	61	56	58	55	49	41	33	40	48	47	40
Dismissal	17	18	20	21	20	20	13	8	17	14	10	11
Others	2	4	3	2	2	1	1	2	0	1	0	1
<b>Criminal RALJ</b>	<b>20</b>	<b>15</b>	<b>15</b>	<b>17</b>	<b>14</b>	<b>14</b>	<b>18</b>	<b>16</b>	<b>13</b>	<b>17</b>	<b>10</b>	<b>19</b>
RALJ Decision	15	9	8	16	10	12	15	10	10	14	8	12
Dismissal	3	5	7	1	4	2	1	6	3	3	2	6
Others	2	1	0	0	0	0	2	0	0	0	0	1

(\*) The highest crime category in a case's history is used to classify cases.

Reflects all documents received by **06/15/2012**.

(1) "Controlled Substance - Non Drug Court" are drug related cases that have never been accepted into drug court.

(2) "Controlled Substance - Drug Court" are drug related cases that have been formally accepted into drug court (identified by "Order of Participation").

(3) DV Subset includes cases with a DV flag in at least one of the charges within the specific crime category at the time of the reporting.

Table 4. Age (days) of Resolved Cases  
King County Superior Court

Crime Category <sup>(*)</sup>	Jun 2011	Jul 2011	Aug 2011	Sep 2011	Oct 2011	Nov 2011	Dec 2011	Jan 2012	Feb 2012	Mar 2012	Apr 2012	May 2012
<b>Homicide <sup>(**)</sup></b>												
50% Cases Resolved by Day	2850	424	589	285	508	359	119	96	216	321	813	764
90% Cases Resolved by Day	3928	562	1191	357	1082	505	119	96	930	347	916	877
Average Time (days)	2509	424	598	241	528	336	119	96	418	321	644	597
<b>Sex Crime</b>												
50% Cases Resolved by Day	198	205	210	267	232	202	166	157	107	266	146	134
90% Cases Resolved by Day	539	586	602	479	430	458	539	380	501	811	426	414
Average Time (days)	326	298	295	310	240	213	235	171	180	338	186	183
<b>DV - Subset</b>												
50% Cases Resolved by Day	406	134	108	258	379	308	379	254	562	419	150	180
90% Cases Resolved by Day	539	659	337	270	430	666	650	369	763	1739	426	628
Average Time (days)	406	243	163	249	358	360	397	240	562	515	211	259
<b>Robbery</b>												
50% Cases Resolved by Day	95	106	192	112	83	140	89	125	130	138	92	111
90% Cases Resolved by Day	235	258	308	276	216	274	339	448	367	382	276	292
Average Time (days)	129	135	175	151	110	154	138	168	130	178	145	156
<b>Aggravated Assault</b>												
50% Cases Resolved by Day	81	82	86	87	85	95	83	84	74	95	96	93
90% Cases Resolved by Day	283	240	273	246	232	249	225	255	252	353	273	225
Average Time (days)	119	107	135	121	115	136	107	127	120	140	137	116
<b>DV - Subset</b>												
50% Cases Resolved by Day	73	77	73	78	82	76	76	78	71	84	81	68
90% Cases Resolved by Day	261	253	311	225	192	246	212	202	222	318	223	183
Average Time (days)	110	104	134	118	102	120	93	98	108	118	106	94
<b>Burglary/Theft/Larceny</b>												
50% Cases Resolved by Day	97	89	104	115	129	116	99	116	118	99	91	83
90% Cases Resolved by Day	259	291	309	314	345	286	290	265	324	277	344	276
Average Time (days)	129	136	175	197	184	164	128	134	154	130	142	120
<b>DV - Subset</b>												
50% Cases Resolved by Day	66	114	77	57	78	100	108	77	50	177	41	90
90% Cases Resolved by Day	111	167	209	234	185	191	241	210	714	232	87	276
Average Time (days)	67	101	86	96	94	104	118	116	207	139	47	124
<b>Motor Vehicle Theft</b>												
50% Cases Resolved by Day	35	84	152	68	66	51	104	110	76	125	120	97
90% Cases Resolved by Day	93	165	403	135	289	280	224	203	471	277	442	241
Average Time (days)	51	91	130	74	116	95	110	117	142	138	216	109
<b>Controlled Substance - Non Drug Court <sup>(1)</sup></b>												
50% Cases Resolved by Day	94	91	114	118	86	113	107	98	92	112	108	88
90% Cases Resolved by Day	318	232	253	400	237	300	300	238	332	344	280	206
Average Time (days)	174	113	197	161	114	151	142	125	137	141	132	115

(\*) The highest crime category in a case's history is used to classify cases. For example, a case charged with homicide at any time during the case's history is reported as a homicide regardless of whether the charge is reduced at resolution.

(\*\*) Due to small number of resolutions in this category, the age statistics for homicides are expected to vary considerably.

Reflects all documents received by 06/15/2012.

(1) "Controlled Substance - Non Drug Court" are drug related cases that have never been accepted into drug court.

(2) "Controlled Substance - Drug Court" are drug related cases that have been formally accepted into drug court (identified by "Order of Participation").

(3) DV Subset includes cases with a DV flag in at least one of the charges within the specific crime category at the time of the reporting.

Table 4 (cont.). Age (days) of Resolved Cases  
King County Superior Court

Crime Category <sup>(*)</sup>	Jun 2011	Jul 2011	Aug 2011	Sep 2011	Oct 2011	Nov 2011	Dec 2011	Jan 2012	Feb 2012	Mar 2012	Apr 2012	May 2012
<b>Drug Court <sup>(2)</sup></b>												
50% Cases Resolved by Day	613	554	581	550	540	622	570	582	525	643	499	642
90% Cases Resolved by Day	958	1244	4510	939	1318	1205	847	1245	842	1165	1320	928
Average Time (days)	616	832	1478	592	726	732	587	757	567	724	650	655
<b>Others/Misdemeanor</b>												
50% Cases Resolved by Day	63	71	86	68	74	81	104	86	86	92	83	78
90% Cases Resolved by Day	213	308	326	334	266	173	351	273	301	350	420	229
Average Time (days)	226	153	426	156	115	95	135	107	152	133	179	115
<b>DV - Subset</b>												
50% Cases Resolved by Day	66	63	86	56	94	71	64	73	217	78	70	73
90% Cases Resolved by Day	210	142	245	149	131	163	298	324	385	216	98	174
Average Time (days)	79	78	117	89	89	90	111	121	169	104	67	92
<b>Criminal RALJ</b>												
50% Cases Resolved by Day	254	266	266	245	245	264	256	234	228	276	262	260
90% Cases Resolved by Day	414	424	348	346	415	430	367	345	347	343	414	417
Average Time (days)	272	263	256	226	302	302	282	244	259	271	279	254

(\*) The highest crime category in a case's history is used to classify cases. For example, a case charged with homicide at any time during the case's history is reported as a homicide regardless of whether the charge is reduced at resolution.

(\*\*) Due to small number of resolutions in this category, the age statistics for homicides are expected to vary considerably.

Reflects all documents received by **06/15/2012**.

- (1) "Controlled Substance - Non Drug Court" are drug related cases that have never been accepted into drug court.
- (2) "Controlled Substance - Drug Court" are drug related cases that have been formally accepted into drug court (identified by "Order of Participation").
- (3) DV Subset includes cases with a DV flag in at least one of the charges within the specific crime category at the time of the reporting.

Table 5. Pending Criminal Cases  
King County Superior Court

Crime Category <sup>(*)</sup>	May 2011	Jun 2011	Jul 2011	Aug 2011	Sep 2011	Oct 2011	Nov 2011	Dec 2011	Jan 2012	Feb 2012	Mar 2012	Apr 2012	May 2012
<b>Total</b>													
Previous Pending	2812	2827	2815	2757	2979	2806	2699	2629	2681	2719	2784	2847	2868
New Filing (+)	525	492	486	590	491	409	478	478	445	522	618	512	576
Resolved (-)	536	549	514	547	508	552	514	449	388	447	520	502	501
<b>End Pending</b>	<b>2827</b>	<b>2815</b>	<b>2757</b>	<b>2979</b>	<b>2806</b>	<b>2699</b>	<b>2629</b>	<b>2681</b>	<b>2719</b>	<b>2784</b>	<b>2847</b>	<b>2868</b>	<b>2924</b>
<b>End Pending- DV Subset</b>	<b>397</b>	<b>436</b>	<b>420</b>	<b>440</b>	<b>384</b>	<b>365</b>	<b>344</b>	<b>350</b>	<b>357</b>	<b>363</b>	<b>350</b>	<b>343</b>	<b>357</b>
<b>Homicide</b>													
Previous Pending	42	41	43	46	46	46	42	41	46	47	46	49	52
New Filing (+)	3	5	3	4	2	3	2	7	4	2	7	4	7
Resolved (-)	4	3	2	5	3	8	4	1	1	5	2	6	3
<b>End Pending</b>	<b>41</b>	<b>43</b>	<b>46</b>	<b>46</b>	<b>46</b>	<b>42</b>	<b>41</b>	<b>46</b>	<b>47</b>	<b>46</b>	<b>49</b>	<b>52</b>	<b>51</b>
<b>End Pending- DV Subset</b>	<b>5</b>	<b>4</b>	<b>5</b>	<b>4</b>	<b>4</b>	<b>5</b>	<b>6</b>	<b>6</b>	<b>6</b>	<b>6</b>	<b>6</b>	<b>5</b>	<b>6</b>
<b>Sex Crime</b>													
Previous Pending	253	260	262	249	256	238	230	229	239	243	265	260	259
New Filing (+)	23	28	23	30	22	28	26	52	34	49	34	60	40
Resolved (-)	18	19	31	30	36	31	24	41	37	27	37	39	33
<b>End Pending</b>	<b>260</b>	<b>262</b>	<b>249</b>	<b>256</b>	<b>238</b>	<b>230</b>	<b>229</b>	<b>239</b>	<b>243</b>	<b>265</b>	<b>260</b>	<b>259</b>	<b>281</b>
<b>End Pending- DV Subset</b>	<b>41</b>	<b>44</b>	<b>38</b>	<b>39</b>	<b>34</b>	<b>32</b>	<b>37</b>	<b>33</b>	<b>33</b>	<b>40</b>	<b>37</b>	<b>33</b>	<b>33</b>
<b>Robbery</b>													
Previous Pending	177	170	168	157	173	165	171	171	173	179	168	188	180
New Filing (+)	25	35	23	36	30	34	36	35	33	38	57	19	50
Resolved (-)	33	40	34	31	31	29	34	36	31	42	34	38	32
<b>End Pending</b>	<b>170</b>	<b>168</b>	<b>157</b>	<b>173</b>	<b>165</b>	<b>171</b>	<b>171</b>	<b>173</b>	<b>179</b>	<b>168</b>	<b>188</b>	<b>180</b>	<b>191</b>
<b>End Pending- DV Subset</b>	<b>5</b>	<b>4</b>	<b>4</b>	<b>4</b>	<b>4</b>	<b>4</b>	<b>3</b>	<b>5</b>	<b>5</b>	<b>4</b>	<b>3</b>	<b>5</b>	<b>5</b>
<b>Aggravated Assault</b>													
Previous Pending	452	452	484	483	525	479	464	438	460	472	476	459	459
New Filing (+)	108	126	126	117	118	98	101	116	91	95	110	104	118
Resolved (-)	117	100	107	119	129	133	127	98	74	96	137	111	126
<b>End Pending</b>	<b>452</b>	<b>484</b>	<b>483</b>	<b>525</b>	<b>479</b>	<b>464</b>	<b>438</b>	<b>460</b>	<b>472</b>	<b>476</b>	<b>459</b>	<b>459</b>	<b>449</b>
<b>End Pending- DV Subset</b>	<b>255</b>	<b>280</b>	<b>279</b>	<b>298</b>	<b>282</b>	<b>248</b>	<b>232</b>	<b>240</b>	<b>241</b>	<b>236</b>	<b>237</b>	<b>236</b>	<b>239</b>
<b>Burglary/Theft/Larceny</b>													
Previous Pending	590	598	597	591	642	602	538	516	529	569	581	632	662
New Filing (+)	141	100	119	140	107	86	92	122	141	134	178	160	156
Resolved (-)	150	135	112	131	106	151	125	105	81	116	112	132	124
<b>End Pending</b>	<b>598</b>	<b>597</b>	<b>591</b>	<b>642</b>	<b>602</b>	<b>538</b>	<b>516</b>	<b>529</b>	<b>569</b>	<b>581</b>	<b>632</b>	<b>662</b>	<b>696</b>
<b>End Pending- DV Subset</b>	<b>26</b>	<b>30</b>	<b>32</b>	<b>35</b>	<b>29</b>	<b>27</b>	<b>20</b>	<b>18</b>	<b>21</b>	<b>21</b>	<b>19</b>	<b>19</b>	<b>17</b>
<b>Motor Vehicle Theft</b>													
Previous Pending	56	45	49	57	68	61	62	60	64	63	73	76	72
New Filing (+)	5	9	12	18	12	10	13	11	18	19	15	5	13
Resolved (-)	12	7	13	9	10	10	9	10	12	9	13	14	20
<b>End Pending</b>	<b>45</b>	<b>49</b>	<b>57</b>	<b>68</b>	<b>61</b>	<b>62</b>	<b>60</b>	<b>64</b>	<b>63</b>	<b>73</b>	<b>76</b>	<b>72</b>	<b>66</b>
<b>End Pending- DV Subset</b>	<b>1</b>	<b>1</b>	<b>2</b>	<b>3</b>	<b>3</b>	<b>4</b>	<b>4</b>	<b>4</b>	<b>4</b>	<b>4</b>	<b>6</b>	<b>5</b>	<b>6</b>
<b>Controlled Substance - Non Drug Court <sup>(1)</sup></b>													
Previous Pending	473	487	461	441	468	439	424	420	417	397	435	466	470
Resolved (-)	77	102	89	113	78	81	78	74	69	67	79	76	81
<b>End Pending</b>	<b>487</b>	<b>461</b>	<b>441</b>	<b>468</b>	<b>439</b>	<b>424</b>	<b>420</b>	<b>417</b>	<b>397</b>	<b>435</b>	<b>466</b>	<b>470</b>	<b>457</b>
<b>End Pending- DV Subset</b>	<b>1</b>	<b>0</b>	<b>1</b>	<b>1</b>	<b>0</b>	<b>0</b>	<b>1</b>	<b>0</b>	<b>0</b>	<b>2</b>	<b>2</b>	<b>1</b>	<b>1</b>
<b>Drug Court <sup>(2)</sup></b>													
Previous Pending	235	252	252	238	245	252	258	248	273	255	253	242	243
New Filing (+)	24	19	9	19	18	23	15	13	23	5	15	14	23
Resolved (-)	9	16	23	13	15	15	27	6	22	11	21	16	10
<b>End Pending</b>	<b>252</b>	<b>252</b>	<b>238</b>	<b>245</b>	<b>252</b>	<b>258</b>	<b>248</b>	<b>273</b>	<b>255</b>	<b>253</b>	<b>242</b>	<b>243</b>	<b>255</b>
<b>End Pending- DV Subset</b>	<b>1</b>	<b>3</b>	<b>2</b>	<b>3</b>	<b>4</b>	<b>4</b>	<b>4</b>	<b>6</b>	<b>6</b>	<b>5</b>	<b>4</b>	<b>4</b>	<b>6</b>

(\*) Information from filing to the reporting time is used to determine crime category for pending cases. The category for a case in this table is the highest crime category since filing. For example, a case initially charged with homicide is reported as a homicide regardless of whether or not the charge is reduced since filing. On the other hand, if the charge for a case is upgraded later, then the reporting category in later reports will reflect the upgraded (higher) crime category.

Reflects all documents received by **06/15/2012**. Drug court cases are identified by docket code "ORPAR" (Order for Participation).

DV Subset includes cases with a DV flag in at least one of the charges within the specific crime category at the time of the reporting.

Table 5 (Cont.). Pending Criminal Cases  
King County Superior Court

Crime Category (*)	May 2011	Jun 2011	Jul 2011	Aug 2011	Sep 2011	Oct 2011	Nov 2011	Dec 2011	Jan 2012	Feb 2012	Mar 2012	Apr 2012	May 2012
<b>Other/Misdemeanor</b>													
Previous Pending	400	379	355	351	410	379	368	368	348	362	350	343	339
New Filing (+)	97	71	99	108	84	57	99	56	51	64	58	61	80
Resolved (-)	104	107	88	81	83	80	72	57	45	62	68	60	53
<b>End Pending</b>	<b>379</b>	<b>355</b>	<b>351</b>	<b>410</b>	<b>379</b>	<b>368</b>	<b>368</b>	<b>348</b>	<b>362</b>	<b>350</b>	<b>343</b>	<b>339</b>	<b>343</b>
<b>End Pending- DV Subset</b>	<b>60</b>	<b>70</b>	<b>57</b>	<b>32</b>	<b>44</b>	<b>41</b>	<b>37</b>	<b>38</b>	<b>74</b>	<b>45</b>	<b>36</b>	<b>35</b>	<b>44</b>
<b>Criminal RALJ</b>													
Previous Pending	134	143	144	144	146	145	142	138	132	132	137	132	132
New Filing (+)	19	21	16	17	16	11	10	12	16	19	12	11	19
Resolved (-)	12	20	15	15	17	14	14	18	16	13	17	10	19
<b>End Pending</b>	<b>143</b>	<b>144</b>	<b>144</b>	<b>146</b>	<b>145</b>	<b>142</b>	<b>138</b>	<b>132</b>	<b>132</b>	<b>137</b>	<b>132</b>	<b>132</b>	<b>135</b>
<b>Total Pending Caseload</b>													
SEA (%)	56%	54%	52%	53%	52%	51%	52%	50%	50%	52%	53%	53%	53%
KNT (%)	44%	46%	48%	47%	48%	49%	48%	50%	50%	48%	47%	47%	47%

(\*) Information from filing to the reporting time is used to determine crime category for pending cases. The category for a case in this table is the highest crime category since filing. For example, a case initially charged with homicide is reported as a homicide regardless of whether or not the charge is reduced since filing. On the other hand, if the charge for a case is upgraded later, then the reporting category in later reports will reflect the upgraded (higher) crime category.

Reflects all documents received by **06/15/2012**. Drug court cases are identified by docket code "ORPAR" (Order for Participation).

DV Subset includes cases with a DV flag in at least one of the charges within the specific crime category at the time of the reporting.

Table 6. Age of Pending Criminal Cases  
King County Superior Court

Crime Category (*)	May 2011	Jun 2011	Jul 2011	Aug 2011	Sep 2011	Oct 2011	Nov 2011	Dec 2011	Jan 2012	Feb 2012	Mar 2012	Apr 2012	May 2012
<b>Total</b>													
<b>Age (days)</b>													
Median (50 <sup>th</sup> percentile)	106	108	117	105	113	119	121	122	119	119	106	99	104
95 <sup>th</sup> percentile	548	561	568	547	565	592	583	596	607	629	643	650	669
<b># of Cases in Age Interval</b>													
0 - 60 days (0 - 2 months)	919	914	814	1024	884	761	784	835	802	863	1011	967	967
61-120 days (3 - 4 months)	662	588	600	602	574	605	524	499	569	549	512	610	640
121-180 days (5 - 6 months)	353	428	420	364	377	372	356	371	321	340	371	341	333
181-270 days (7 - 9 months)	353	337	363	404	389	356	353	346	368	358	319	306	327
> 270 days (> 9 months)	540	537	560	585	582	605	612	630	659	674	634	644	657
<b>DV Subset - Age (days)</b>													
Median (50 <sup>th</sup> percentile)	71	76	83	75	81	89	91	79	90	86	82	83	81
95 <sup>th</sup> percentile	460	485	506	497	480	511	531	557	588	577	593	598	624
<b># of Cases in Age Interval</b>													
0 - 60 days (0 - 2 months)	167	182	175	191	153	134	131	144	142	134	152	139	153
61-120 days (3 - 4 months)	94	109	96	92	93	94	76	66	71	83	67	74	72
121-180 days (5 - 6 months)	45	60	52	60	46	42	51	51	38	40	49	46	34
181-270 days (7 - 9 months)	36	24	35	40	43	42	34	33	42	45	31	27	37
> 270 days (> 9 months)	55	61	62	57	49	53	52	56	64	61	51	57	61
<b>Homicide</b>													
<b>Age (days)</b>													
Median (50 <sup>th</sup> percentile)	237	239	245	205	222	240	252	208	230	233	209	178	170
95 <sup>th</sup> percentile	944	793	824	756	786	817	847	878	909	687	732	762	784
<b># of Cases in Age Interval</b>													
0 - 60 days (0 - 2 months)	4	7	9	10	6	4	5	8	11	9	9	10	10
61-120 days (3 - 4 months)	7	4	4	7	8	8	5	5	2	9	11	8	9
121-180 days (5 - 6 months)	2	5	7	3	4	6	7	7	5	2	3	9	8
181-270 days (7 - 9 months)	9	9	7	6	8	6	6	6	9	6	5	3	3
> 270 days (> 9 months)	19	18	19	20	20	18	18	20	20	20	21	22	21
<b>Sex Crime</b>													
<b>Age (days)</b>													
Median (50 <sup>th</sup> percentile)	147	160	174	177	164	176	175	163	174	143	140	145	130
95 <sup>th</sup> percentile	551	577	593	603	614	645	675	706	659	636	664	693	669
<b># of Cases in Age Interval</b>													
0 - 60 days (0 - 2 months)	61	51	38	51	42	47	46	61	64	74	67	57	74
61-120 days (3 - 4 months)	50	45	55	47	42	40	31	38	45	41	49	62	54
121-180 days (5 - 6 months)	41	50	39	31	44	33	39	30	18	32	39	30	39
181-270 days (7 - 9 months)	39	40	42	50	42	41	34	36	38	35	31	32	35
> 270 days (> 9 months)	69	76	75	77	68	69	79	74	78	83	74	78	79
<b>DV Subset - Age (days)</b>													
Median (50 <sup>th</sup> percentile)	239	178	224	240	315	256	224	237	284	209	159	190	211
95 <sup>th</sup> percentile	618	648	966	997	1027	1058	1088	1119	1150	992	1210	1240	1271
<b># of Cases in Age Interval</b>													
0 - 60 days (0 - 2 months)	7	7	3	4	1	3	9	7	3	10	11	4	4
61-120 days (3 - 4 months)	6	5	6	4	5	4	1	3	8	6	2	8	9
121-180 days (5 - 6 months)	7	11	5	2	4	4	5	4	1	3	8	3	1
181-270 days (7 - 9 months)	6	2	6	11	7	6	4	5	4	4	3	4	6
> 270 days (> 9 months)	15	19	18	18	17	15	18	14	17	16	13	14	13
<b>Robbery</b>													
<b>Age (days)</b>													
Median (50 <sup>th</sup> percentile)	85	99	119	91	94	96	93	101	105	107	75	90	88
95 <sup>th</sup> percentile	445	421	460	479	509	540	582	601	580	609	618	634	542
<b># of Cases in Age Interval</b>													
0 - 60 days (0 - 2 months)	49	51	49	64	59	55	68	58	58	62	91	70	64
61-120 days (3 - 4 months)	55	50	30	37	37	42	34	39	47	32	44	47	52
121-180 days (5 - 6 months)	22	21	36	32	20	22	20	29	23	24	25	19	31
181-270 days (7 - 9 months)	20	22	18	13	20	21	19	15	17	24	16	21	21
> 270 days (> 9 months)	24	24	24	27	29	31	30	32	34	26	22	23	23

(\*) The highest crime category since filing is used to classify cases. For example, a case initially charged with homicide is reported as a homicide regardless of whether or not the charge is reduced since filing. On the other hand, if the charge for a case is upgraded later, then the reporting category in later reports will reflect the upgraded (higher) crime category.

Reflects all documents received by 06/15/2012.

- (1) "Controlled Substance - Non Drug Court" are drug related cases that have never been accepted into drug court.
- (2) "Controlled Substance - Drug Court" are drug related cases that have been formally accepted into drug court (identified by "Order of Participation").
- (3) DV Subset includes cases with a DV flag in at least one of the charges within the specific crime category at the time of the reporting.

Table 6 (cont.). Age of Pending Criminal Cases  
King County Superior Court

Crime Category <sup>(*)</sup>	May 2011	Jun 2011	Jul 2011	Aug 2011	Sep 2011	Oct 2011	Nov 2011	Dec 2011	Jan 2012	Feb 2012	Mar 2012	Apr 2012	May 2012
<b>Aggravated Assault</b>													
<b>Age (days)</b>													
Median (50 <sup>th</sup> percentile)	72	79	83	76	81	89	84	80	90	93	93	84	79
95 <sup>th</sup> percentile	411	388	411	405	435	466	496	471	477	496	488	512	543
<b># of Cases in Age Interval</b>													
0 - 60 days (0 - 2 months)	191	203	191	225	193	176	173	186	186	158	178	185	195
61-120 days (3 - 4 months)	108	124	119	120	107	113	96	98	105	119	100	97	88
121-180 days (5 - 6 months)	54	59	65	70	68	58	61	60	46	68	67	60	46
181-270 days (7 - 9 months)	51	49	51	50	52	55	46	51	62	51	48	41	45
> 270 days (> 9 months)	48	49	57	60	59	62	62	65	73	80	66	76	75
<b>DV Subset - Age (days)</b>													
<b>Age (days)</b>													
Median (50 <sup>th</sup> percentile)	69	70	75	62	66	77	72	67	92	78	68	63	71
95 <sup>th</sup> percentile	434	461	488	421	375	419	431	453	511	484	465	418	449
<b># of Cases in Age Interval</b>													
0 - 60 days (0 - 2 months)	114	126	125	143	122	106	100	109	107	89	113	113	111
61-120 days (3 - 4 months)	62	72	67	64	59	65	57	52	52	59	48	46	52
121-180 days (5 - 6 months)	26	34	36	40	33	27	32	32	24	31	31	32	23
181-270 days (7 - 9 months)	24	18	19	20	25	26	22	20	27	24	20	15	21
> 270 days (> 9 months)	29	30	32	28	23	24	21	27	31	33	25	30	32
<b>Burglary/Theft/Larceny</b>													
<b>Age (days)</b>													
Median (50 <sup>th</sup> percentile)	93	85	91	91	98	99	111	96	86	78	69	68	73
95 <sup>th</sup> percentile	391	395	426	412	442	463	483	465	471	472	458	440	452
<b># of Cases in Age Interval</b>													
0 - 60 days (0 - 2 months)	216	232	203	245	208	166	171	194	223	239	290	300	287
121-180 days (5 - 6 months)	149	126	150	150	137	146	116	107	117	131	131	155	198
61-120 days (3 - 4 months)	89	101	84	76	92	85	84	83	65	62	69	71	75
181-270 days (7 - 9 months)	82	74	81	93	79	69	70	65	73	66	61	46	50
> 270 days (> 9 months)	62	64	73	78	86	72	75	80	91	83	81	88	86
<b>DV Subset - Age (days)</b>													
<b>Age (days)</b>													
Median (50 <sup>th</sup> percentile)	64	73	68	57	57	84	106	103	60	77	83	50	52
95 <sup>th</sup> percentile	190	220	251	230	260	291	440	683	176	205	236	266	296
<b># of Cases in Age Interval</b>													
0 - 60 days (0 - 2 months)	11	11	15	19	16	9	4	5	10	8	8	10	10
61-120 days (3 - 4 months)	9	11	10	7	8	12	9	5	2	4	5	3	3
121-180 days (5 - 6 months)	4	6	2	6	3	3	5	6	8	3	2	2	1
181-270 days (7 - 9 months)	1	1	4	2	1	1	1	1	0	6	4	4	2
> 270 days (> 9 months)	1	1	1	1	1	2	1	1	1	0	0	0	1
<b>Motor Vehicle Theft</b>													
<b>Age (days)</b>													
Median (50 <sup>th</sup> percentile)	84	113	96	77	81	94	110	111	100	93	90	97	108
95 <sup>th</sup> percentile	327	357	388	313	335	320	373	427	458	441	472	483	479
<b># of Cases in Age Interval</b>													
0 - 60 days (0 - 2 months)	13	15	20	30	23	21	16	22	21	32	26	19	26
61-120 days (3 - 4 months)	19	11	10	13	15	16	16	12	12	11	16	24	11
121-180 days (5 - 6 months)	7	15	15	6	6	8	9	9	8	9	9	5	8
181-270 days (7 - 9 months)	2	4	6	13	11	9	9	9	8	8	9	11	10
> 270 days (> 9 months)	4	4	6	6	6	8	10	12	14	13	16	13	11

(\*) The highest crime category since filing is used to classify cases. For example, a case initially charged with homicide is reported as a homicide regardless of whether or not the charge is reduced since filing. On the other hand, if the charge for a case is upgraded later, then the reporting category in later reports will reflect the upgraded (higher) crime category.

Reflects all documents received by **06/15/2012**.

- (1) "Controlled Substance - Non Drug Court" are drug related cases that have never been accepted into drug court.
- (2) "Controlled Substance - Drug Court" are drug related cases that have been formally accepted into drug court (identified by "Order of Participation").
- (3) DV Subset includes cases with a DV flag in at least one of the charges within the specific crime category at the time of the reporting.

Table 6 (cont.) . Age of Pending Criminal Cases  
King County Superior Court

Crime Category (*)	May 2011	Jun 2011	Jul 2011	Aug 2011	Sep 2011	Oct 2011	Nov 2011	Dec 2011	Jan 2012	Feb 2012	Mar 2012	Apr 2012	May 2012
<b>Controlled Substance - Non Drug Court<sup>(1)</sup></b>													
<b>Age (days)</b>	84	80	98	85	86	91	82	87	100	105	70	77	87
Median (50 <sup>th</sup> percentile)	358	385	413	439	472	500	526	555	590	589	528	558	589
95 <sup>th</sup> percentile													
<b># of Cases in Age Interval</b>	189	186	141	185	172	144	164	151	114	148	211	194	164
0 - 60 days (0 - 2 months)	134	116	121	110	105	109	99	101	115	100	79	114	130
61-120 days (3 - 4 months)	49	68	78	60	55	60	42	64	64	66	64	57	51
121-180 days (5 - 6 months)	51	42	46	52	50	50	50	39	38	56	54	45	48
181-270 days (7 - 9 months)	64	49	55	61	57	61	65	62	66	65	58	60	64
> 270 days (> 9 months)													
<b>Drug Court<sup>(2)</sup></b>													
<b>Age (days)</b>													
Median (50 <sup>th</sup> percentile)	385	404	416	415	416	406	399	397	401	421	431	446	441
95 <sup>th</sup> percentile	1209	1239	1249	1136	1163	1183	1146	1095	931	1010	926	897	912
<b># of Cases in Age Interval</b>													
0 - 60 days (0 - 2 months)	0	0	0	0	1	2	1	4	0	0	0	0	1
61-120 days (3 - 4 months)	9	5	1	5	2	5	7	6	6	4	2	2	
121-180 days (5 - 6 months)	20	24	14	10	15	15	11	19	15	8	12	12	10
181-270 days (7 - 9 months)	36	37	41	40	43	35	40	43	38	33	27	30	31
> 270 days (> 9 months)	187	186	182	190	191	201	189	201	196	208	201	199	210
<b>Others/Misdemeanor</b>													
<b>Age (days)</b>													
Median (50 <sup>th</sup> percentile)	72	88	95	78	75	95	106	101	107	112	117	112	108
95 <sup>th</sup> percentile	405	435	430	434	438	455	471	502	533	562	592	543	569
<b># of Cases in Age Interval</b>													
0 - 60 days (0 - 2 months)	164	131	128	185	150	121	119	130	100	106	118	111	117
61-120 days (3 - 4 months)	95	90	81	75	88	98	91	68	97	82	55	66	69
121-180 days (5 - 6 months)	44	53	52	49	44	49	52	42	48	45	60	56	37
181-270 days (7 - 9 months)	32	35	39	50	49	41	43	46	51	46	37	42	56
> 270 days (> 9 months)	44	46	51	51	48	59	63	62	66	71	73	62	64
<b>DV Subset - Age (days)</b>													
Median (50 <sup>th</sup> percentile)	58	58	62	78	107	95	119	71	48	70	71	89	52
95 <sup>th</sup> percentile	306	318	384	380	410	441	513	544	352	562	635	665	654
<b># of Cases in Age Interval</b>													
0 - 60 days (0 - 2 months)	31	35	28	21	11	12	14	18	17	21	15	10	23
61-120 days (3 - 4 months)	15	20	12	16	19	10	5	3	7	11	8	12	7
121-180 days (5 - 6 months)	5	6	6	10	5	8	8	5	2	2	6	7	4
181-270 days (7 - 9 months)	5	3	4	3	5	5	5	7	9	6	1	1	5
> 270 days (> 9 months)	4	6	7	6	4	6	5	5	6	5	6	5	5
<b>Criminal RALJ</b>													
<b>Age (days)</b>													
Median (50 <sup>th</sup> percentile)	131	139	136	136	136	149	159	162	160	155	141	152	143
95 <sup>th</sup> percentile	394	311	335	338	368	327	344	334	365	328	424	449	480
<b># of Cases in Age Interval</b>													
0 - 60 days (0 - 2 months)	32	38	35	29	30	25	21	21	25	35	31	21	29
61-120 days (3 - 4 months)	36	28	29	38	33	28	29	25	23	20	25	35	26
121-180 days (5 - 6 months)	25	32	30	27	29	36	31	28	29	24	23	20	28
181-270 days (7 - 9 months)	31	25	32	37	35	29	36	36	34	33	31	33	28
> 270 days (> 9 months)	19	21	18	15	18	24	21	22	21	25	22	23	24

(\*) The highest crime category since filing is used to classify cases. For example, a case initially charged with homicide is reported as a homicide regardless of whether or not the charge is reduced since filing. On the other hand, if the charge for a case is upgraded later, then the reporting category in later reports will reflect the upgraded (higher) crime category.

Reflects all documents received by **06/15/2012**.

- (1) "Controlled Substance - Non Drug Court" are drug related cases that have never been accepted into drug court.
- (2) "Controlled Substance - Drug Court" are drug related cases that have been formally accepted into drug court (identified by "Order of Participation").
- (3) DV Subset includes cases with a DV flag in at least one of the charges within the specific crime category at the time of the reporting.



Table 7. Comparison between SEA/KNT: Filings, Resolutions, and Pending Caseload  
King County Superior Court

	Jun 2011	Jul 2011	Aug 2011	Sep 2011	Oct 2011	Nov 2011	Dec 2011	Jan 2012	Feb 2012	Mar 2012	Apr 2012	May 2012 <sup>(1)</sup>
<b># of Criminal Judges <sup>(2)</sup></b>												
SEA - # of Criminal Judges	15	15	15	15	15	15	15	15	15	15	15	15
KNT - # of Criminal Judges	7	7	7	7	7	7	7	7	7	7	7	7
SEA - Drug Court Judge	1	1	1	1	1	1	1	1	1	1	1	1
<b>Total Filings</b>												
SEA - # of Cases Filed	270	270	349	279	217	283	254	261	308	377	306	326
KNT - # of Cases Filed	222	216	241	212	192	195	224	184	214	241	206	250
SEA %	55%	56%	59%	57%	53%	59%	53%	59%	59%	61%	60%	57%
KNT %	45%	44%	41%	43%	47%	41%	47%	41%	41%	39%	40%	43%
SEA - # of Cases per Judge	17	17	22	17	14	18	17	17	19	24	19	20
KNT - # of Cases per Judge	32	31	34	30	27	28	32	26	31	34	29	36
<b>Total Resolutions</b>												
SEA - # of Cases Resolved	355	320	318	283	321	281	271	214	242	275	286	280
KNT - # of Cases Resolved	178	171	216	210	216	206	169	152	194	224	200	211
SEA - Drug Court Cases Resolved	15	19	12	11	11	21	4	14	6	19	10	8
KNT - Drug Court Cases Resolved	1	4	1	4	4	6	2	8	5	2	6	2
SEA %	65%	62%	58%	56%	58%	55%	61%	55%	54%	53%	57%	56%
KNT %	33%	33%	39%	41%	39%	40%	38%	39%	43%	43%	40%	42%
SEA - Drug Court %	3%	4%	2%	2%	2%	4%	1%	4%	1%	4%	2%	2%
KNT - Drug Court %	0%	1%	0%	1%	1%	1%	0%	2%	1%	0%	1%	0%
SEA - # of Cases per Judge	22	21	21	18	21	19	18	15	16	18	19	18
KNT - # of Cases per Judge	26	25	31	30	31	30	24	23	28	32	29	30
<b>Total Pending</b>												
SEA - # of Cases Pending	1339	1255	1401	1287	1205	1185	1170	1214	1270	1352	1370	1390
KNT - # of Cases Pending	1224	1264	1333	1267	1236	1196	1238	1260	1261	1253	1255	1279
SEA - Drug Court Cases Pending	181	168	173	175	176	168	178	165	167	156	157	164
KNT - Drug Court Cases Pending	71	70	72	77	82	80	95	90	86	86	86	91
SEA %	48%	46%	47%	46%	45%	45%	44%	45%	46%	47%	48%	48%
KNT %	43%	46%	45%	45%	46%	45%	46%	46%	45%	44%	44%	44%
SEA - Drug Court %	6%	6%	6%	6%	7%	6%	6%	6%	6%	5%	5%	6%
KNT - Drug Court %	3%	3%	3%	3%	3%	4%	4%	3%	3%	3%	3%	3%
SEA - # of Cases per Judge	95	89	98	91	86	85	90	91	90	94	95	97
KNT - # of Cases per Judge	185	191	201	192	188	182	190	192	190	191	191	196

(1) Reflects all documents received by **06/15/2012**.

(2) The number of judges does not include RJC chief judge and the criminal chief judge at SEA.

Table 8. Drug Court Statistics

King County Superior Court

Categories	May 2011	Jun 2011	Jul 2011	Aug 2011	Sep 2011	Oct 2011	Nov 2011	Dec 2011	Jan 2012	Feb 2012	Mar 2012	Apr 2012	May 2012
Referrals - Total	37	31	23	58	47	32	37	33	34	60	76	41	43
Directly from PA	24	23	17	43	28	21	34	11	15	46	49	22	34
From Mainstream	13	8	8	15	19	11	3	21	19	14	17	19	9
Arraignments in Drug Court <sup>(1)</sup>	20	25	13	20	30	24	26	10	10	24	40	30	25
GP in Drug Court <sup>(2)</sup>	3	6	8	3	3	7	2	5	2	4	2	2	5
Return to mainstream <sup>(3)</sup>	19	16	17	17	24	13	18	10	8	14	17	16	4
Opt-in <sup>(4)</sup>	24	19	9	19	18	23	15	13	23	5	15	13	23
Graduations <sup>(5)</sup>	5	10	17	7	9	12	20	1	18	7	16	12	8
Terminations <sup>(6)</sup>	4	6	6	6	6	3	7	5	4	4	5	4	2

- (1) Arraignments held in drug court regardless opt-in status of the cases.
- (2) Guilty pleas entered in drug court before opt-in.
- (3) Referred to drug court but decision by court order to go to mainstream.
- (4) Opt-in reflects the court order of participation.
- (5) Graduations are dismissals of opted-in cases after the completion of program.
- (6) Terminations are cases that fail in drug court.