

King County Superior Court
Criminal Department Statistical Report

June 2012

Department of Judicial Administration
Prepared by: Shiquan Liao, Ph.D., Statistician

Release date: July 20, 2012

Report #: CRM-2012-06

Terminology

Age of Pending Case

Time (days) from filing to resolution, less suspense time if applicable.

Age of Resolved Case

Time (days) from filing to resolution, less suspense time if applicable.

End Pending

Number of pending cases at the end of reporting period.

Net Change in Pending

The change in number of pending cases (end pending minus previous pending).

Pending Case

A case is defined as pending if it is unresolved and not on suspense status.

Previous Pending

Number of pending cases at the beginning of reporting period.

Reactivated Case

A case returns to active from suspense status during the reporting period.

Resolution

A case is resolved if all issues in the complaint are fully adjudicated. However, a drug court case is reported as resolved only when dispositive document is also filed (completed).

Resolution Category

Five resolution categories are used to report resolution of criminal cases: jury trial (CVJV, AQJV), non-jury trial (CVCT, AQCT), guilty plea (GP, GPAT, GPJT), dismissal (DSM), and other (all other resolution codes). For criminal RALJ cases, the resolution categories are: RALJ decision (CDTA, CDTM, CDTR), dismissal (DSRM), and others (any other resolution codes).

Suspended Case

A case is placed in suspense status (removing from active) during the reporting period.

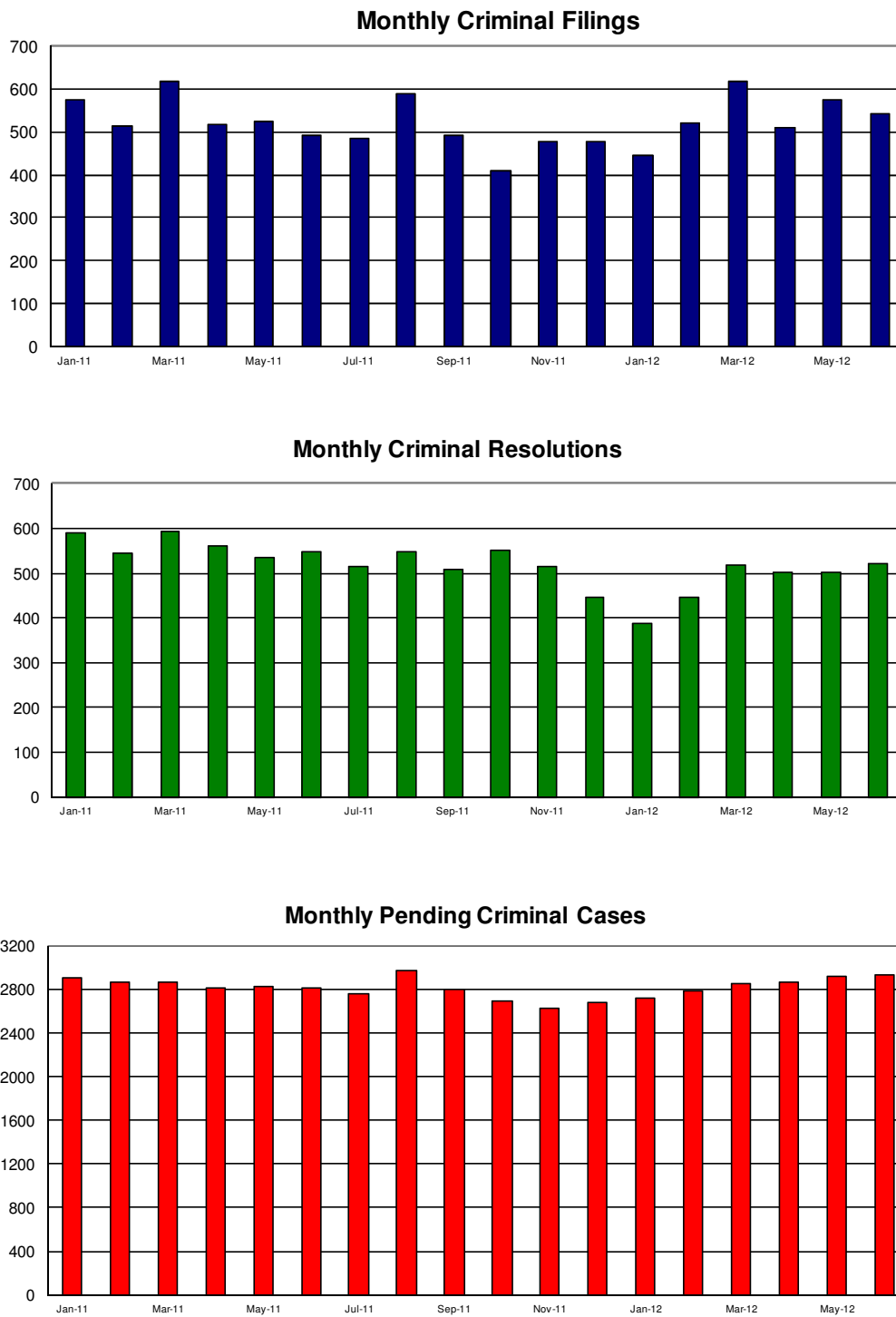
Suspense Status

A case is said to be on suspense status if it is on warrant or appeal.

Suspense Time

Time (days) a case is on suspense status.

Figure 1. Number of Criminal Filings, Resolutions and Pending Caseload by Month



Note: Starting January 2010, RALJ cases are included.

Figure 2. Crime Category as a Percentage of Total Filings by Year

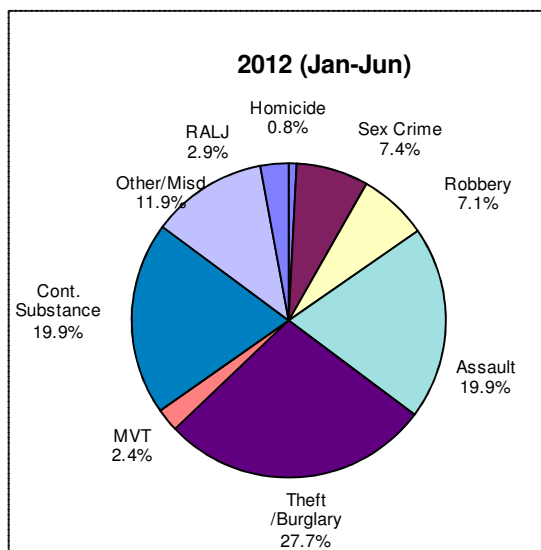
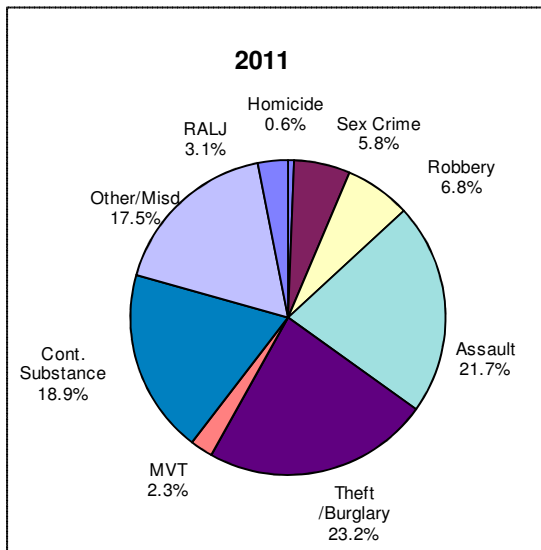
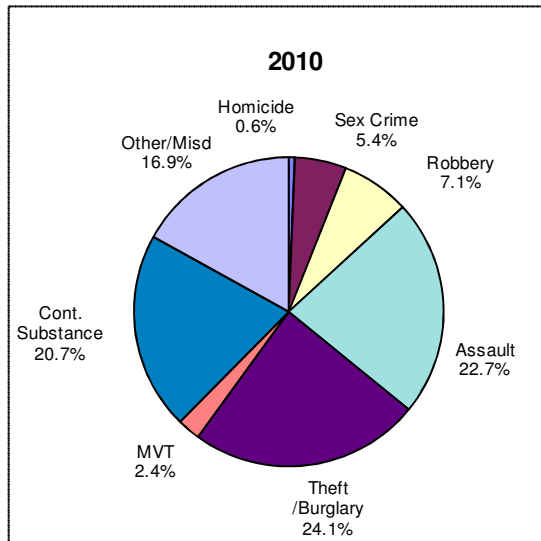


Table 1. Monthly Criminal New Filings by Crime Category (*)
King County Superior Court

	Jan	Feb	Mar	Apr	May	Jun	Jul	Aug	Sep	Oct	Nov	Dec	ADJ ⁽¹⁾	Annual
Total														
2010	515	554	610	512	587	666	574	563	532	608	535	611	(0)	6867
2011	576	513	620	518	525	492	486	590	491	409	478	478	(+2)	6178
2012 ⁽²⁾	445	522	618	512	576	544								
Total – DV Subset														
2009	NA	NA	NA	NA	NA	NA	NA	NA	NA	NA	NA	NA	NA	NA
2010	102	67	127	116	92	114	116	100	87	80	78	96	NA	1174
2011 ⁽²⁾	76	82	90	77	92	93								
Homicide														
2010	4	3	5	5	2	3	2	1	4	9	2	2	(0)	42
2011	3	3	2	1	3	5	3	4	2	3	2	7	(0)	38
2012 ⁽²⁾	4	2	7	4	7	2								
Homicide – DV Subset														
2010	NA	NA	NA	NA	NA	NA	NA	NA	NA	NA	NA	NA	NA	NA
2011	1	1	0	0	0	1	0	4	2	2	0	0	(0)	11
2012 ⁽²⁾	0	0	0	0	1	0								
Sex Crime														
2010	31	32	27	24	36	37	39	39	28	19	21	28	(+3)	364
2011	34	32	22	36	23	28	23	30	22	28	26	52	(0)	356
2012 ⁽²⁾	34	49	34	60	40	22								
Sex Crime – DV Subset														
2010	NA	NA	NA	NA	NA	NA	NA	NA	NA	NA	NA	NA	NA	NA
2011	6	4	2	4	3	3	0	4	2	7	3	1	(0)	39
2012 ⁽²⁾	2	6	3	0	3	1								
Robbery														
2010	54	43	58	42	34	39	32	35	37	33	23	48	(0)	478
2011	50	27	58	29	25	35	23	36	30	34	36	35	(0)	418
2012 ⁽²⁾	33	38	57	19	50	32								
Robbery – DV Subset														
2010	NA	NA	NA	NA	NA	NA	NA	NA	NA	NA	NA	NA	NA	NA
2011	3	1	3	4	2	1	1	0	1	0	2	0	(0)	18
2012 ⁽²⁾	3	0	1	0	0	0								
Aggravated Assault														
2010	107	122	125	117	119	138	139	133	136	132	115	137	(+26)	1546
2011	105	84	139	105	108	126	126	117	118	98	101	116	(0)	1343
2012 ⁽²⁾	91	95	110	104	118	121								
Aggravated Assault – DV Subset														
2010	NA	NA	NA	NA	NA	NA	NA	NA	NA	NA	NA	NA	NA	NA
2011	62	42	86	66	69	80	89	77	71	58	55	36	(0)	791
2012 ⁽²⁾	55	56	74	62	65	69								
Burglary/Theft /Larceny														
2010	125	149	141	125	126	137	125	137	134	147	115	153	(+12)	1626
2011	147	124	141	114	141	100	119	140	107	86	92	122	(1)	1434
2012 ⁽²⁾	141	134	178	160	156	121								
Burglary/Theft /Larceny – DV Subset														
2010	NA	NA	NA	NA	NA	NA	NA	NA	NA	NA	NA	NA	NA	NA
2011	14	8	11	8	7	7	11	9	7	5	3	0	(0)	90
2012 ⁽²⁾	6	5	6	8	2	7								
Motor Vehicle Theft														
2010	9	8	12	10	10	17	13	13	17	21	13	18	(0)	161
2011	14	20	12	9	5	9	12	18	12	10	13	11	(0)	145
2012 ⁽²⁾	18	19	15	5	13	7								
Motor Vehicle Theft – DV Subset														
2010	NA	NA	NA	NA	NA	NA	NA	NA	NA	NA	NA	NA	NA	NA
2011	1	0	0	0	0	0	1	2	1	0	1	1	(0)	7
2012 ⁽²⁾	1	1	1	0	1	0								

(*) The highest crime category in a case's history is used to classify cases. For example, a case charged with homicide at any time in the case's history is reported as a homicide regardless of whether the charge is reduced at resolution.

(1) "ADJ" = year-end adjustment.

(2) Reflects all documents received by 07/15/2012.

(3) DV Subset includes cases with a DV flag in at least one of the charges within the specific crime category at the time of the reporting.

Table 1 (cont.). Monthly Criminal New Filings by Crime Category ^(*)
King County Superior Court

	Jan	Feb	Mar	Apr	May	Jun	Jul	Aug	Sep	Oct	Nov	Dec	ADJ ⁽¹⁾	Annual
Controlled Substance														
2010	80	86	127	98	154	188	124	91	74	115	130	115	(-2)	1380
2011	120	108	107	99	104	97	65	120	100	82	99	67	(1)	1169
2012 ⁽²⁾	57	102	147	88	93	152								
Controlled Substance - DV Subset														
2010	NA	NA	NA	NA	NA	NA	NA	NA	NA	NA	NA	NA	NA	NA
2011	0	0	0	0	0	0	0	0	0	0	1	0	(0)	1
2012 ⁽²⁾	0	2	0	0	1	0								
Others/Misdemeanor														
2010	94	96	100	76	87	92	93	96	88	115	101	96	(-40)	1094
2011	83	97	123	110	97	71	99	108	84	57	99	56	(0)	1084
2012 ⁽²⁾	51	64	58	61	80	70								
Others/Misdemeanor - DV Subset														
2010	NA	NA	NA	NA	NA	NA	NA	NA	NA	NA	NA	NA	NA	NA
2011	13	11	25	38	11	22	14	8	5	7	13	52	(0)	219
2012 ⁽²⁾	9	12	5	7	19	16								
Criminal RALJ														
2010	11	15	15	15	19	15	7	18	14	17	15	14	(0)	176
2011	20	18	16	15	19	21	16	17	16	11	10	12	(0)	191
2012 ⁽²⁾	16	19	12	11	19	17								
RALJ - DV Subset														
2010	NA	NA	NA	NA	NA	NA	NA	NA	NA	NA	NA	NA	NA	NA
2011	2	0	0	0	0	0	0	0	0	0	0	0	(0)	2
2012 ⁽²⁾	0	0	0	0	0	0								
KNT Filing as % of Total														
2010	36%	40%	40%	39%	36%	38%	40%	36%	43%	39%	34%	41%		38%
2011	40%	42%	46%	43%	44%	45%	44%	41%	43%	47%	41%	47%		44%
2012 ⁽²⁾	41%	41%	39%	40%	43%	39%								

(*) The highest crime category in a case's history is used to classify cases. For example, a case charged with homicide at any time in the case's history is reported as a homicide regardless of whether the charge is reduced at resolution.

(1) "ADJ" = year-end adjustment.

(2) Reflects all documents received by **07/15/2012**.

(3) DV Subset includes cases with a DV flag in at least one of the charges within the specific crime category at the time of the reporting.

Table 2. Monthly Criminal Case Resolutions by Crime Category
King County Superior Court

	Jan	Feb	Mar	Apr	May	Jun	Jul	Aug	Sep	Oct	Nov	Dec	ADJ ⁽¹⁾	Annual
Total														
2010	535	528	582	587	554	556	597	601	570	599	454	510	(+70)	6743
2011	590	546	595	560	536	549	514	547	508	552	514	446	(+16)	6463
2012 ⁽²⁾	388	447	520	502	501	521								
Total – DV Subset														
2010	NA	NA	NA	NA	NA	NA	NA	NA	NA	NA	NA	NA	NA	NA
2011	109	103	49	121	105	92	110	122	117	108	102	89	(0)	1174
2012 ⁽²⁾	65	78	113	89	85	88								
Homicide														
2010	6	4	2	4	6	7	1	7	3	7	7	3	(0)	57
2011	5	6	3	5	4	3	2	5	3	8	4	1	(0)	49
2012 ⁽²⁾	1	5	2	6	3	5								
Homicide – DV Subset														
2010	NA	NA	NA	NA	NA	NA	NA	NA	NA	NA	NA	NA	NA	NA
2011	0	0	0	0	1	1	0	1	0	0	0	0	(0)	3
2012 ⁽²⁾	0	0	0	2	0	0								
Sex Crime														
2010	27	30	25	20	32	32	32	22	34	22	27	26	(+4)	333
2011	30	42	21	21	18	19	31	30	36	31	24	41	(+2)	346
2012 ⁽²⁾	37	27	37	39	33	38								
Sex Crime – DV Subset														
2010	NA	NA	NA	NA	NA	NA	NA	NA	NA	NA	NA	NA	NA	NA
2011	7	7	4	9	1	2	4	5	4	3	3	2	(0)	52
2012 ⁽²⁾	4	2	8	4	4	6								
Robbery														
2010	27	39	35	58	55	25	55	43	36	42	38	27	(+3)	483
2011	39	38	45	39	33	40	34	31	31	29	34	36	(-1)	428
2012 ⁽²⁾	31	42	34	38	32	52								
Robbery – DV Subset														
2010	NA	NA	NA	NA	NA	NA	NA	NA	NA	NA	NA	NA	NA	NA
2011	0	1	1	3	0	3	0	1	1	0	2	0	(0)	12
2012 ⁽²⁾	2	2	1	0	0	2								
Aggravated Assault														
2010	101	112	140	127	98	112	127	138	137	154	95	122	(+22)	1485
2011	117	123	131	121	117	100	107	119	129	133	127	98	(+2)	1424
2012 ⁽²⁾	74	96	137	111	126	99								
Aggravated Assault – DV Subset														
2010	NA	NA	NA	NA	NA	NA	NA	NA	NA	NA	NA	NA	NA	NA
2011	73	73	35	76	69	62	77	88	90	92	74	42	(0)	819
2012 ⁽²⁾	43	60	81	65	69	65								
Burglary/Theft /Larceny														
2010	115	107	137	140	123	124	114	151	112	115	92	109	(+17)	1456
2011	122	120	128	129	150	135	112	131	106	151	125	105	(+1)	1515
2012 ⁽²⁾	81	116	112	132	124	134								
Burglary/Theft /Larceny – DV Subset														
2010	NA	NA	NA	NA	NA	NA	NA	NA	NA	NA	NA	NA	NA	NA
2011	11	6	3	9	13	8	8	9	9	5	10	6	(0)	97
2012 ⁽²⁾	5	4	7	6	6	5								
Motor Vehicle Theft														
2010	12	12	20	13	7	7	9	13	13	19	6	14	(0)	145
2011	16	10	14	13	12	7	13	9	10	10	9	10	(0)	133
2012 ⁽²⁾	12	8	13	14	20	7								
Motor Vehicle Theft – DV Subset														
2010	NA	NA	NA	NA	NA	NA	NA	NA	NA	NA	NA	NA	NA	NA
2011	0	0	0	0	0	0	0	1	1	0	1	0	(0)	3
2012 ⁽²⁾	1	0	0	2	0	0								

The highest crime category in a case's history is used to classify cases. For example, a case charged with homicide at any time in the case's history is reported as a homicide regardless of whether the charge is reduced at resolution.

- (1) "ADJ" = year-end adjustment.
- (2) Reflects all documents received by 07/15/2012.
- (3) "Controlled Substance - Non Drug Court" are drug related cases that have never been accepted into drug court.
- (4) "Controlled Substance - Drug Court" are drug related cases that have been formally accepted into drug court (identified by "Order of Participation").
- (5) DV Subset includes cases with a DV flag in at least one of the charges within the specific crime category at the time of the reporting.

Table 2 (cont.). Monthly Criminal Case Resolutions by Crime Category
King County Superior Court

	Jan	Feb	Mar	Apr	May	Jun	Jul	Aug	Sep	Oct	Nov	Dec	ADJ ⁽¹⁾	Annual
Controlled Substance - Non Drug Court														
2010	103	104	102	96	87	103	108	105	97	88	87	92	(+14)	1186
2011	101	82	111	97	77	102	89	113	78	81	78	74	(+8)	1088
2012 ⁽²⁾	69	67	79	76	81	71								
Controlled Substance - Non Drug Court DV Subset														
2010	NA	NA	NA	NA	NA	NA	NA	NA	NA	NA	NA	NA	NA	NA
2011	0	0	1	0	1	0	0	0	1	0	0	3	(0)	6
2012 ⁽²⁾	0	0	1	1	1	0								
Drug Court														
2010	43	14	24	30	34	36	34	23	18	24	15	5	(+2)	302
2011	29	20	21	21	9	16	23	13	15	15	27	6	(0)	218
2012 ⁽²⁾	22	11	21	16	10	22								
Drug Court -DV Subset														
2010	NA	NA	NA	NA	NA	NA	NA	NA	NA	NA	NA	NA	NA	NA
2011	1	0	0	0	0	0	1	0	0	0	0	0	(0)	2
2012 ⁽²⁾	0	1	1	0	0	0								
Others/Misdemeanor														
2010	85	82	83	87	101	86	99	84	97	98	78	90	(+8)	1078
2011	111	91	105	100	104	107	88	81	83	80	72	57	(-4)	1075
2012 ⁽²⁾	45	62	68	60	53	76								
Others/Misdemeanor - DV Subset														
2010	NA	NA	NA	NA	NA	NA	NA	NA	NA	NA	NA	NA	NA	NA
2011	17	12	5	24	20	16	20	17	11	8	12	36	(0)	198
2012 ⁽²⁾	10	9	14	9	5	10								
Criminal RALJ														
2010	16	24	14	12	11	24	18	15	23	30	9	22	(0)	218
2011	20	14	16	14	12	20	15	15	17	14	14	18	(-2)	187
2012 ⁽²⁾	16	13	17	10	19	17								
RALJ - DV Subset														
2010	NA	NA	NA	NA	NA	NA	NA	NA	NA	NA	NA	NA	NA	NA
2011	0	2	0	0	0	0	0	0	0	0	0	0	(0)	2
2012 ⁽²⁾	0	0	0	0	0	0								
KNT Filing as % of Total														
2010	41%	44%	38%	36%	38%	39%	37%	37%	35%	37%	36%	37%		37%
2011	38%	34%	37%	40%	40%	33%	34%	40%	42%	40%	41%	38%		38%
2012 ⁽²⁾	41%	45%	44%	41%	43%	46%								

The highest crime category in a case's history is used to classify cases. For example, a case charged with homicide at any time in the case's history is reported as a homicide regardless of whether the charge is reduced at resolution.

- (1) "ADJ" = year-end adjustment.
- (2) Reflects all documents received by **07/15/2012**.
- (3) "Controlled Substance - Non Drug Court" are drug related cases that have never been accepted into drug court.
- (4) "Controlled Substance - Drug Court" are drug related cases that have been formally accepted into drug court (identified by "Order of Participation").
- (5) DV Subset includes cases with a DV flag in at least one of the charges within the specific crime category at the time of the reporting.

Table 3. Number of Cases Resolved and Resolution Category
King County Superior Court

Crime Category (*)	Jul 2011	Aug 2011	Sep 2011	Oct 2011	Nov 2011	Dec 2011	Jan 2012	Feb 2012	Mar 2012	Apr 2012	May 2012	Jun 2012
Homicide	2	5	3	8	4	1	1	5	2	6	3	5
Resolved by Jury Trial	1	1	0	3	1	1	0	3	0	1	0	0
Resolved by Non-Jury Trial	0	0	0	0	0	0	0	0	0	0	0	0
Resolved by Guilty Plea	1	4	3	5	3	0	1	2	2	4	2	4
Dismissal	0	0	0	0	0	0	0	0	0	1	1	1
Others	0	0	0	0	0	0	0	0	0	0	0	0
Sex Crime	31	30	36	31	24	41	37	27	37	39	33	38
Resolved by Jury Trial	5	2	3	3	5	3	1	3	5	2	1	5
Resolved by Non-Jury Trial	0	0	0	0	0	0	0	0	0	0	0	0
Resolved by Guilty Plea	23	26	32	25	16	32	28	20	26	36	27	26
Dismissal	3	2	1	3	3	6	8	4	6	1	5	7
Others	0	0	0	0	0	0	0	0	0	0	0	0
Robbery	34	31	31	29	34	36	31	42	34	38	32	52
Resolved by Jury Trial	0	4	3	1	1	2	3	3	1	2	1	4
Resolved by Non-Jury Trial	0	0	1	0	0	0	0	0	0	0	0	0
Resolved by Guilty Plea	25	22	23	24	26	29	26	39	29	34	25	46
Dismissal	9	5	4	4	7	5	2	0	3	2	6	2
Others	0	0	0	0	0	0	0	0	1	0	0	0
Aggravated Assault	107	119	129	133	127	98	74	96	137	111	126	99
Resolved by Jury Trial	9	8	5	5	5	8	1	6	11	6	3	4
Resolved by Non-Jury Trial	0	0	1	0	0	0	0	0	0	0	0	1
Resolved by Guilty Plea	89	94	110	107	109	77	64	78	108	90	111	87
Dismissal	9	17	13	21	13	13	9	12	18	15	12	7
Others	0	0	0	0	0	0	0	0	0	0	0	0
Burglary/Theft/Larceny	112	131	106	151	125	105	81	116	112	132	124	134
Resolved by Jury Trial	3	6	3	2	6	0	6	4	1	2	5	2
Resolved by Non-Jury Trial	1	0	1	1	0	0	0	0	0	0	0	0
Resolved by Guilty Plea	101	113	91	131	111	91	70	100	93	109	106	115
Dismissal	7	12	11	17	8	14	5	12	18	21	13	17
Others	0	0	0	0	0	0	0	0	0	0	0	0
Motor Vehicle Theft	13	9	10	10	9	10	12	8	13	14	20	7
Resolved by Jury Trial	0	0	0	0	0	0	0	0	0	0	0	1
Resolved by Non-Jury Trial	0	0	0	0	0	0	0	0	0	0	0	0
Resolved by Guilty Plea	11	6	9	7	9	9	11	7	12	13	14	6
Dismissal	2	3	1	3	0	1	1	1	1	1	6	0
Others	0	0	0	0	0	0	0	0	0	0	0	0
Controlled Substance - Non Drug Court⁽¹⁾	89	113	78	81	78	74	69	67	79	76	81	71
Resolved by Jury Trial	3	3	3	2	4	1	0	3	3	1	0	2
Resolved by Non-Jury Trial	0	2	0	0	0	1	1	1	1	0	0	1
Resolved by Guilty Plea	74	83	65	68	65	53	61	59	64	65	63	60
Dismissal	12	25	10	11	9	19	7	4	11	10	18	8
Others	0	0	0	0	0	0	0	0	0	0	0	0
Drug Court⁽²⁾	23	13	15	15	27	6	22	11	21	16	10	22
Resolved by Non-Jury Trial	4	1	4	0	5	2	3	2	5	1	1	4
Resolved by Guilty Plea	2	5	2	3	2	3	1	2	0	3	1	0
Dismissal	17	7	9	12	20	1	18	7	16	12	8	18
Others	0	0	0	0	0	0	0	0	0	0	0	0
Others/Misdemeanor	88	81	83	80	72	57	45	62	68	60	53	76
Resolved by Jury Trial	4	2	2	3	2	2	2	5	5	3	1	5
Resolved by Non-Jury Trial	1	0	0	0	0	0	0	0	0	0	0	1
Resolved by Guilty Plea	61	56	58	55	49	41	33	40	48	47	40	47
Dismissal	18	20	21	20	20	13	8	17	14	10	11	22
Others	4	3	2	2	1	1	2	0	1	0	1	1
Criminal RALJ	15	15	17	14	14	18	16	13	17	10	19	17
RALJ Decision	9	8	16	10	12	15	10	10	14	8	12	15
Dismissal	5	7	1	4	2	1	6	3	3	2	6	2
Others	1	0	0	0	0	2	0	0	0	0	1	0

(*) The highest crime category in a case's history is used to classify cases.

Reflects all documents received by **07/15/2012**.

(1) "Controlled Substance - Non Drug Court" are drug related cases that have never been accepted into drug court.

(2) "Controlled Substance - Drug Court" are drug related cases that have been formally accepted into drug court (identified by "Order of Participation").

(3) DV Subset includes cases with a DV flag in at least one of the charges within the specific crime category at the time of the reporting.

Table 4. Age (days) of Resolved Cases
King County Superior Court

Crime Category ^(*)	Jul 2011	Aug 2011	Sep 2011	Oct 2011	Nov 2011	Dec 2011	Jan 2012	Feb 2012	Mar 2012	Apr 2012	May 2012	Jun 2012
Homicide ^(**)												
50% Cases Resolved by Day	424	589	285	508	359	119	96	216	321	813	764	469
90% Cases Resolved by Day	562	1191	357	1082	505	119	96	930	347	916	877	1638
Average Time (days)	424	598	241	528	336	119	96	418	321	644	597	586
Sex Crime												
50% Cases Resolved by Day	205	210	267	232	202	166	157	107	266	146	134	117
90% Cases Resolved by Day	586	602	479	430	458	539	380	501	811	426	414	403
Average Time (days)	298	295	310	240	213	235	171	180	338	186	183	215
DV - Subset												
50% Cases Resolved by Day	134	108	258	379	308	379	254	562	419	150	180	272
90% Cases Resolved by Day	659	337	270	430	666	650	369	763	1739	426	628	648
Average Time (days)	243	163	249	358	360	397	240	562	515	211	259	297
Robbery												
50% Cases Resolved by Day	106	192	112	83	140	89	125	130	138	92	111	137
90% Cases Resolved by Day	258	308	276	216	274	339	448	367	382	276	292	352
Average Time (days)	135	175	151	110	154	138	168	130	178	145	156	188
Aggravated Assault												
50% Cases Resolved by Day	82	86	87	85	95	83	84	74	95	96	93	84
90% Cases Resolved by Day	240	273	246	232	249	225	255	252	353	273	225	279
Average Time (days)	107	135	121	115	136	107	127	120	140	137	116	134
DV - Subset												
50% Cases Resolved by Day	77	73	78	82	76	76	78	71	84	81	68	82
90% Cases Resolved by Day	253	311	225	192	246	212	202	222	318	223	183	304
Average Time (days)	104	134	118	102	120	93	98	108	118	106	94	138
Burglary/Theft/Larceny												
50% Cases Resolved by Day	89	104	115	129	116	99	116	118	99	91	83	99
90% Cases Resolved by Day	291	309	314	345	286	290	265	324	277	344	276	237
Average Time (days)	136	175	197	184	164	128	134	154	130	142	120	128
DV - Subset												
50% Cases Resolved by Day	114	77	57	78	100	108	77	50	177	41	90	42
90% Cases Resolved by Day	167	209	234	185	191	241	210	714	232	87	276	320
Average Time (days)	101	86	96	94	104	118	116	207	139	47	124	146
Motor Vehicle Theft												
50% Cases Resolved by Day	84	152	68	66	51	104	110	76	125	120	97	119
90% Cases Resolved by Day	165	403	135	289	280	224	203	471	277	442	241	541
Average Time (days)	91	130	74	116	95	110	117	142	138	216	109	194
Controlled Substance - Non Drug Court ⁽¹⁾												
50% Cases Resolved by Day	91	114	118	86	113	107	98	92	112	108	88	98
90% Cases Resolved by Day	232	253	400	237	300	300	238	332	344	280	206	237
Average Time (days)	113	197	161	114	151	142	125	137	141	132	115	125

(*) The highest crime category in a case's history is used to classify cases. For example, a case charged with homicide at any time during the case's history is reported as a homicide regardless of whether the charge is reduced at resolution.

(**) Due to small number of resolutions in this category, the age statistics for homicides are expected to vary considerably.

Reflects all documents received by 07/15/2012.

(1) "Controlled Substance - Non Drug Court" are drug related cases that have never been accepted into drug court.

(2) "Controlled Substance - Drug Court" are drug related cases that have been formally accepted into drug court (identified by "Order of Participation").

(3) DV Subset includes cases with a DV flag in at least one of the charges within the specific crime category at the time of the reporting.

Table 4 (cont.). Age (days) of Resolved Cases
King County Superior Court

Crime Category ^(*)	Jul 2011	Aug 2011	Sep 2011	Oct 2011	Nov 2011	Dec 2011	Jan 2012	Feb 2012	Mar 2012	Apr 2012	May 2012	Jun 2012
Drug Court ⁽²⁾												
50% Cases Resolved by Day	554	581	550	540	622	570	582	525	643	499	642	497
90% Cases Resolved by Day	1244	4510	939	1318	1205	847	1245	842	1165	1320	928	840
Average Time (days)	832	1478	592	726	732	587	757	567	724	650	655	562
Others/Misdemeanor												
50% Cases Resolved by Day	71	86	68	74	81	104	86	86	92	83	78	91
90% Cases Resolved by Day	308	326	334	266	173	351	273	301	350	420	229	362
Average Time (days)	153	426	156	115	95	135	107	152	133	179	115	143
DV - Subset												
50% Cases Resolved by Day	63	86	56	94	71	64	73	217	78	70	73	68
90% Cases Resolved by Day	142	245	149	131	163	298	324	385	216	98	174	405
Average Time (days)	78	117	89	89	90	111	121	169	104	67	92	125
Criminal RALJ												
50% Cases Resolved by Day	266	266	245	245	264	256	234	228	276	262	260	296
90% Cases Resolved by Day	424	348	346	415	430	367	345	347	343	414	417	477
Average Time (days)	263	256	226	302	302	282	244	259	271	279	254	320

(*) The highest crime category in a case's history is used to classify cases. For example, a case charged with homicide at any time during the case's history is reported as a homicide regardless of whether the charge is reduced at resolution.

(**) Due to small number of resolutions in this category, the age statistics for homicides are expected to vary considerably.

Reflects all documents received by **07/15/2012**.

(1) "Controlled Substance - Non Drug Court" are drug related cases that have never been accepted into drug court.

(2) "Controlled Substance - Drug Court" are drug related cases that have been formally accepted into drug court (identified by "Order of Participation").

(3) DV Subset includes cases with a DV flag in at least one of the charges within the specific crime category at the time of the reporting.

Table 5. Pending Criminal Cases
King County Superior Court

Crime Category ^(*)	Jun 2011	Jul 2011	Aug 2011	Sep 2011	Oct 2011	Nov 2011	Dec 2011	Jan 2012	Feb 2012	Mar 2012	Apr 2012	May 2012	Jun 2012
Total													
Previous Pending	2827	2815	2757	2979	2806	2699	2629	2681	2719	2784	2847	2868	2924
New Filing (+)	492	486	590	491	409	478	478	445	522	618	512	576	544
Resolved (-)	549	514	547	508	552	514	449	388	447	520	502	501	521
End Pending	2815	2757	2979	2806	2699	2629	2681	2719	2784	2847	2868	2924	2934
End Pending- DV Subset	436	420	440	384	365	344	350	357	363	350	343	357	344
Homicide													
Previous Pending	41	43	46	46	46	42	41	46	47	46	49	52	51
New Filing (+)	5	3	4	2	3	2	7	4	2	7	4	7	2
Resolved (-)	3	2	5	3	8	4	1	1	5	2	6	3	5
End Pending	43	46	46	46	42	41	46	47	46	49	52	51	53
End Pending- DV Subset	4	5	4	4	5	6	6	6	6	6	5	6	6
Sex Crime													
Previous Pending	260	262	249	256	238	230	229	239	243	265	260	259	281
New Filing (+)	28	23	30	22	28	26	52	34	49	34	60	40	22
Resolved (-)	19	31	30	36	31	24	41	37	27	37	39	33	38
End Pending	262	249	256	238	230	229	239	243	265	260	259	281	272
End Pending- DV Subset	44	38	39	34	32	37	33	33	40	37	33	33	27
Robbery													
Previous Pending	170	168	157	173	165	171	171	173	179	168	188	180	191
New Filing (+)	35	23	36	30	34	36	35	33	38	57	19	50	32
Resolved (-)	40	34	31	31	29	34	36	31	42	34	38	32	52
End Pending	168	157	173	165	171	171	173	179	168	188	180	191	174
End Pending- DV Subset	4	4	4	4	4	3	5	5	4	3	5	5	3
Aggravated Assault													
Previous Pending	452	484	483	525	479	464	438	460	472	476	459	459	449
New Filing (+)	126	126	117	118	98	101	116	91	95	110	104	118	121
Resolved (-)	100	107	119	129	133	127	98	74	96	137	111	126	99
End Pending	484	483	525	479	464	438	460	472	476	459	459	449	462
End Pending- DV Subset	280	279	298	282	248	232	240	241	236	237	236	239	227
Burglary/Theft/Larceny													
Previous Pending	598	597	591	642	602	538	516	529	569	581	632	662	696
New Filing (+)	100	119	140	107	86	92	122	141	134	178	160	156	121
Resolved (-)	135	112	131	106	151	125	105	81	116	112	132	124	134
End Pending	597	591	642	602	538	516	529	569	581	632	662	696	666
End Pending- DV Subset	30	32	35	29	27	20	18	21	21	19	19	17	18
Motor Vehicle Theft													
Previous Pending	45	49	57	68	61	62	60	64	63	73	76	72	66
New Filing (+)	9	12	18	12	10	13	11	18	19	15	5	13	7
Resolved (-)	7	13	9	10	10	9	10	12	9	13	14	20	7
End Pending	49	57	68	61	62	60	64	63	73	76	72	66	56
End Pending- DV Subset	1	2	3	3	4	4	4	4	4	6	5	6	6
Controlled Substance - Non Drug Court ⁽¹⁾													
Previous Pending	487	461	441	468	439	424	420	417	397	435	466	470	457
Resolved (-)	102	89	113	78	81	78	74	69	67	79	76	81	71
End Pending	461	441	468	439	424	420	417	397	435	466	470	457	514
End Pending- DV Subset	0	1	1	0	0	1	0	0	2	2	1	1	1
Drug Court ⁽²⁾													
Previous Pending	252	252	238	245	252	258	248	273	255	253	242	243	255
New Filing (+)	19	9	19	18	23	15	13	23	5	15	14	23	20
Resolved (-)	16	23	13	15	15	27	6	22	11	21	16	10	22
End Pending	252	238	245	252	258	248	273	255	253	242	243	255	252
End Pending- DV Subset	3	2	3	4	4	4	6	6	5	4	4	6	6

(*) Information from filing to the reporting time is used to determine crime category for pending cases. The category for a case in this table is the highest crime category since filing. For example, a case initially charged with homicide is reported as a homicide regardless of whether or not the charge is reduced since filing. On the other hand, if the charge for a case is upgraded later, then the reporting category in later reports will reflect the upgraded (higher) crime category.

Reflects all documents received by **07/15/2012**. Drug court cases are identified by docket code "ORPAR" (Order for Participation).

DV Subset includes cases with a DV flag in at least one of the charges within the specific crime category at the time of the reporting.

Table 5 (Cont.). Pending Criminal Cases
King County Superior Court

Crime Category (*)	Jun 2011	Jul 2011	Aug 2011	Sep 2011	Oct 2011	Nov 2011	Dec 2011	Jan 2012	Feb 2012	Mar 2012	Apr 2012	May 2012	Jun 2012
Other/Misdemeanor													
Previous Pending	379	355	351	410	379	368	368	348	362	350	343	339	343
New Filing (+)	71	99	108	84	57	99	56	51	64	58	61	80	70
Resolved (-)	107	88	81	83	80	72	57	45	62	68	60	53	76
End Pending	355	351	410	379	368	368	348	362	350	343	339	343	329
End Pending- DV Subset	70	57	32	44	41	37	38	74	45	36	35	44	50
Criminal RALJ													
Previous Pending	143	144	144	146	145	142	138	132	132	137	132	132	135
New Filing (+)	21	16	17	16	11	10	12	16	19	12	11	19	17
Resolved (-)	20	15	15	17	14	14	18	16	13	17	10	19	17
End Pending	144	144	146	145	142	138	132	132	137	132	132	135	136
Total Pending Caseload													
SEA (%)	54%	52%	53%	52%	51%	52%	50%	50%	52%	53%	53%	53%	54%
KNT (%)	46%	48%	47%	48%	49%	48%	50%	50%	48%	47%	47%	47%	46%

(*) Information from filing to the reporting time is used to determine crime category for pending cases. The category for a case in this table is the highest crime category since filing. For example, a case initially charged with homicide is reported as a homicide regardless of whether or not the charge is reduced since filing. On the other hand, if the charge for a case is upgraded later, then the reporting category in later reports will reflect the upgraded (higher) crime category.

Reflects all documents received by **07/15/2012**. Drug court cases are identified by docket code "ORPAR" (Order for Participation).

DV Subset includes cases with a DV flag in at least one of the charges within the specific crime category at the time of the reporting.

Table 6. Age of Pending Criminal Cases
King County Superior Court

Crime Category (*)	Jun 2011	Jul 2011	Aug 2011	Sep 2011	Oct 2011	Nov 2011	Dec 2011	Jan 2012	Feb 2012	Mar 2012	Apr 2012	May 2012	Jun 2012
Total													
Age (days)													
Median (50 th percentile)	108	117	105	113	119	121	122	119	119	106	99	104	107
95 th percentile	561	568	547	565	592	583	596	607	629	643	650	669	675
# of Cases in Age Interval													
0 - 60 days (0 - 2 months)	914	814	1024	884	761	784	835	802	863	1011	967	967	964
61-120 days (3 - 4 months)	588	600	602	574	605	524	499	569	549	512	610	640	638
121-180 days (5 - 6 months)	428	420	364	377	372	356	371	321	340	371	341	333	397
181-270 days (7 - 9 months)	337	363	404	389	356	353	346	368	358	319	306	327	293
> 270 days (> 9 months)	537	560	585	582	605	612	630	659	674	634	644	657	642
DV Subset - Age (days)													
Median (50 th percentile)	76	83	75	81	89	91	79	90	86	82	83	81	80
95 th percentile	485	506	497	480	511	531	557	588	577	593	598	624	580
# of Cases in Age Interval													
0 - 60 days (0 - 2 months)	182	175	191	153	134	131	144	142	134	152	139	153	146
61-120 days (3 - 4 months)	109	96	92	93	94	76	66	71	83	67	74	72	71
121-180 days (5 - 6 months)	60	52	60	46	42	51	51	38	40	49	46	34	37
181-270 days (7 - 9 months)	24	35	40	43	42	34	33	42	45	31	27	37	38
> 270 days (> 9 months)	61	62	57	49	53	52	56	64	61	51	57	61	52
Homicide													
Age (days)													
Median (50 th percentile)	239	245	205	222	240	252	208	230	233	209	178	170	177
95 th percentile	793	824	756	786	817	847	878	909	687	732	762	784	814
# of Cases in Age Interval													
0 - 60 days (0 - 2 months)	7	9	10	6	4	5	8	11	9	9	10	10	8
61-120 days (3 - 4 months)	4	4	7	8	8	5	5	2	9	11	8	9	10
121-180 days (5 - 6 months)	5	7	3	4	6	7	7	5	2	3	9	8	9
181-270 days (7 - 9 months)	9	7	6	8	6	6	6	9	6	5	3	3	6
> 270 days (> 9 months)	18	19	20	20	18	18	20	20	20	21	22	21	20
Sex Crime													
Age (days)													
Median (50 th percentile)	160	174	177	164	176	175	163	174	143	140	145	130	148
95 th percentile	577	593	603	614	645	675	706	659	636	664	693	669	709
# of Cases in Age Interval													
0 - 60 days (0 - 2 months)	51	38	51	42	47	46	61	64	74	67	57	74	64
61-120 days (3 - 4 months)	45	55	47	42	40	31	38	45	41	49	62	54	47
121-180 days (5 - 6 months)	50	39	31	44	33	39	30	18	32	39	30	39	50
181-270 days (7 - 9 months)	40	42	50	42	41	34	36	38	35	31	32	35	34
> 270 days (> 9 months)	76	75	77	68	69	79	74	78	83	74	78	79	77
DV Subset - Age (days)													
Median (50 th percentile)	178	224	240	315	256	224	237	284	209	159	190	211	234
95 th percentile	648	966	997	1027	1058	1088	1119	1150	992	1210	1240	1271	1301
# of Cases in Age Interval													
0 - 60 days (0 - 2 months)	7	3	4	1	3	9	7	3	10	11	4	4	3
61-120 days (3 - 4 months)	5	6	4	5	4	1	3	8	6	2	8	9	3
121-180 days (5 - 6 months)	11	5	2	4	4	5	4	1	3	8	3	1	6
181-270 days (7 - 9 months)	2	6	11	7	6	4	5	4	4	3	4	6	5
> 270 days (> 9 months)	19	18	18	17	15	18	14	17	16	13	14	13	10
Robbery													
Age (days)													
Median (50 th percentile)	99	119	91	94	96	93	101	105	107	75	90	88	94
95 th percentile	421	460	479	509	540	582	601	580	609	618	634	542	572
# of Cases in Age Interval													
0 - 60 days (0 - 2 months)	51	49	64	59	55	68	58	58	62	91	70	64	65
61-120 days (3 - 4 months)	50	30	37	37	42	34	39	47	32	44	47	52	49
121-180 days (5 - 6 months)	21	36	32	20	22	20	29	23	24	25	19	31	25
181-270 days (7 - 9 months)	22	18	13	20	21	19	15	17	24	16	21	21	17
> 270 days (> 9 months)	24	24	27	29	31	30	32	34	26	22	23	23	18

(*) The highest crime category since filing is used to classify cases. For example, a case initially charged with homicide is reported as a homicide regardless of whether or not the charge is reduced since filing. On the other hand, if the charge for a case is upgraded later, then the reporting category in later reports will reflect the upgraded (higher) crime category.

Reflects all documents received by 07/15/2012.

- (1) "Controlled Substance - Non Drug Court" are drug related cases that have never been accepted into drug court.
- (2) "Controlled Substance - Drug Court" are drug related cases that have been formally accepted into drug court (identified by "Order of Participation").
- (3) DV Subset includes cases with a DV flag in at least one of the charges within the specific crime category at the time of the reporting.

Table 6 (cont.). Age of Pending Criminal Cases
King County Superior Court

Crime Category (*)	Jun 2011	Jul 2011	Aug 2011	Sep 2011	Oct 2011	Nov 2011	Dec 2011	Jan 2012	Feb 2012	Mar 2012	Apr 2012	May 2012	Jun 2012
Aggravated Assault													
Age (days)													
Median (50 th percentile)	79	83	76	81	89	84	80	90	93	93	84	79	81
95 th percentile	388	411	405	435	466	496	471	477	496	488	512	543	523
# of Cases in Age Interval													
0 - 60 days (0 - 2 months)	203	191	225	193	176	173	186	186	158	178	185	195	195
61-120 days (3 - 4 months)	124	119	120	107	113	96	98	105	119	100	97	88	100
121-180 days (5 - 6 months)	59	65	70	68	58	61	60	46	68	67	60	46	47
181-270 days (7 - 9 months)	49	51	50	52	55	46	51	62	51	48	41	45	44
> 270 days (> 9 months)	49	57	60	59	62	62	65	73	80	66	76	75	76
DV Subset - Age (days)													
Age (days)													
Median (50 th percentile)	70	75	62	66	77	72	67	92	78	68	63	71	68
95 th percentile	461	488	421	375	419	431	453	511	484	465	418	449	420
# of Cases in Age Interval													
0 - 60 days (0 - 2 months)	126	125	143	122	106	100	109	107	89	113	113	111	101
61-120 days (3 - 4 months)	72	67	64	59	65	57	52	52	59	48	46	52	55
121-180 days (5 - 6 months)	34	36	40	33	27	32	32	24	31	31	32	23	22
181-270 days (7 - 9 months)	18	19	20	25	26	22	20	27	24	20	15	21	22
> 270 days (> 9 months)	30	32	28	23	24	21	27	31	33	25	30	32	27
Burglary/Theft/Larceny													
Age (days)													
Median (50 th percentile)	85	91	91	98	99	111	96	86	78	69	68	73	83
95 th percentile	395	426	412	442	463	483	465	471	472	458	440	452	468
# of Cases in Age Interval													
0 - 60 days (0 - 2 months)	232	203	245	208	166	171	194	223	239	290	300	287	254
61-120 days (3 - 4 months)	126	150	150	137	146	116	107	117	131	131	155	198	206
121-180 days (5 - 6 months)	101	84	76	92	85	84	83	65	62	69	71	75	89
181-270 days (7 - 9 months)	74	81	93	79	69	70	65	73	66	61	46	50	47
> 270 days (> 9 months)	64	73	78	86	72	75	80	91	83	81	88	86	90
DV Subset - Age (days)													
Age (days)													
Median (50 th percentile)	73	68	57	57	84	106	103	60	77	83	50	52	57
95 th percentile	220	251	230	260	291	440	683	176	205	236	266	296	242
# of Cases in Age Interval													
0 - 60 days (0 - 2 months)	11	15	19	16	9	4	5	10	8	8	10	10	11
61-120 days (3 - 4 months)	11	10	7	8	12	9	5	2	4	5	3	3	5
121-180 days (5 - 6 months)	6	2	6	3	3	5	6	8	3	2	2	1	0
181-270 days (7 - 9 months)	1	4	2	1	1	1	1	0	6	4	4	2	2
> 270 days (> 9 months)	1	1	1	1	2	1	1	1	0	0	0	1	0
Motor Vehicle Theft													
Age (days)													
Median (50 th percentile)	113	96	77	81	94	110	111	100	93	90	97	108	109
95 th percentile	357	388	313	335	320	373	427	458	441	472	483	479	509
# of Cases in Age Interval													
0 - 60 days (0 - 2 months)	15	20	30	23	21	16	22	21	32	26	19	26	14
61-120 days (3 - 4 months)	11	10	13	15	16	16	12	12	11	16	24	11	15
121-180 days (5 - 6 months)	15	15	6	6	8	9	9	8	9	9	5	8	10
181-270 days (7 - 9 months)	4	6	13	11	9	9	9	8	8	9	11	10	5
> 270 days (> 9 months)	4	6	6	6	8	10	12	14	13	16	13	11	12

(*) The highest crime category since filing is used to classify cases. For example, a case initially charged with homicide is reported as a homicide regardless of whether or not the charge is reduced since filing. On the other hand, if the charge for a case is upgraded later, then the reporting category in later reports will reflect the upgraded (higher) crime category.

Reflects all documents received by **07/15/2012**.

- (1) "Controlled Substance - Non Drug Court" are drug related cases that have never been accepted into drug court.
- (2) "Controlled Substance - Drug Court" are drug related cases that have been formally accepted into drug court (identified by "Order of Participation").
- (3) DV Subset includes cases with a DV flag in at least one of the charges within the specific crime category at the time of the reporting.

Table 6 (cont.) . Age of Pending Criminal Cases
King County Superior Court

Crime Category (*)	Jun 2011	Jul 2011	Aug 2011	Sep 2011	Oct 2011	Nov 2011	Dec 2011	Jan 2012	Feb 2012	Mar 2012	Apr 2012	May 2012	Jun 2012
Controlled Substance - Non Drug Court⁽¹⁾													
Age (days)	80	98	85	86	91	82	87	100	105	70	77	87	82
Median (50 th percentile)	385	413	439	472	500	526	555	590	589	528	558	589	514
95 th percentile													
# of Cases in Age Interval	186	141	185	172	144	164	151	114	148	211	194	164	205
0 - 60 days (0 - 2 months)	116	121	110	105	109	99	101	115	100	79	114	130	125
61-120 days (3 - 4 months)	68	78	60	55	60	42	64	64	66	64	57	51	82
121-180 days (5 - 6 months)	42	46	52	50	50	50	39	38	56	54	45	48	34
181-270 days (7 - 9 months)	49	55	61	57	61	65	62	66	65	58	60	64	68
> 270 days (> 9 months)													
Drug Court⁽²⁾													
Age (days)													
Median (50 th percentile)	404	416	415	416	406	399	397	401	421	431	446	441	437
95 th percentile	1239	1249	1136	1163	1183	1146	1095	931	1010	926	897	912	942
# of Cases in Age Interval													
0 - 60 days (0 - 2 months)	0	0	0	1	2	1	4	0	0	0	0	1	2
61-120 days (3 - 4 months)	5	1	5	2	5	7	6	6	4	2	2	0	7
121-180 days (5 - 6 months)	24	14	10	15	15	11	19	15	8	12	12	10	12
181-270 days (7 - 9 months)	37	41	40	43	35	40	43	38	33	27	30	31	31
> 270 days (> 9 months)	186	182	190	191	201	189	201	196	208	201	199	210	200
Others/Misdemeanor													
Age (days)													
Median (50 th percentile)	88	95	78	75	95	106	101	107	112	117	112	108	107
95 th percentile	435	430	434	438	455	471	502	533	562	592	543	569	559
# of Cases in Age Interval													
0 - 60 days (0 - 2 months)	131	128	185	150	121	119	130	100	106	118	111	117	121
61-120 days (3 - 4 months)	90	81	75	88	98	91	68	97	82	55	66	69	60
121-180 days (5 - 6 months)	53	52	49	44	49	52	42	48	45	60	56	37	38
181-270 days (7 - 9 months)	35	39	50	49	41	43	46	51	46	37	42	56	51
> 270 days (> 9 months)	46	51	51	48	59	63	62	66	71	73	62	64	59
DV Subset - Age (days)													
Median (50 th percentile)	58	62	78	107	95	119	71	48	70	71	89	52	49
95 th percentile	318	384	380	410	441	513	544	352	562	635	665	654	430
# of Cases in Age Interval													
0 - 60 days (0 - 2 months)	35	28	21	11	12	14	18	17	21	15	10	23	28
61-120 days (3 - 4 months)	20	12	16	19	10	5	3	7	11	8	12	7	6
121-180 days (5 - 6 months)	6	6	10	5	8	8	5	2	2	6	7	4	7
181-270 days (7 - 9 months)	3	4	3	5	5	5	7	9	6	1	1	5	5
> 270 days (> 9 months)	6	7	6	4	6	5	5	6	5	6	5	5	4
Criminal RALJ													
Age (days)													
Median (50 th percentile)	139	136	136	136	149	159	162	160	155	141	152	143	144
95 th percentile	311	335	338	368	327	344	334	365	328	424	449	480	510
# of Cases in Age Interval													
0 - 60 days (0 - 2 months)	38	35	29	30	25	21	21	25	35	31	21	29	36
61-120 days (3 - 4 months)	28	29	38	33	28	29	25	23	20	25	35	26	19
121-180 days (5 - 6 months)	32	30	27	29	36	31	28	29	24	23	20	28	35
181-270 days (7 - 9 months)	25	32	37	35	29	36	36	34	33	31	33	28	24
> 270 days (> 9 months)	21	18	15	18	24	21	22	21	25	22	23	24	22

(*) The highest crime category since filing is used to classify cases. For example, a case initially charged with homicide is reported as a homicide regardless of whether or not the charge is reduced since filing. On the other hand, if the charge for a case is upgraded later, then the reporting category in later reports will reflect the upgraded (higher) crime category.

Reflects all documents received by 07/15/2012.

- (1) "Controlled Substance - Non Drug Court" are drug related cases that have never been accepted into drug court.
- (2) "Controlled Substance - Drug Court" are drug related cases that have been formally accepted into drug court (identified by "Order of Participation").
- (3) DV Subset includes cases with a DV flag in at least one of the charges within the specific crime category at the time of the reporting.

Table 7. Comparison between SEA/KNT: Filings, Resolutions, and Pending Caseload
King County Superior Court

	Jul 2011	Aug 2011	Sep 2011	Oct 2011	Nov 2011	Dec 2011	Jan 2012	Feb 2012	Mar 2012	Apr 2012	May 2012	Jun 2012 ⁽¹⁾
# of Criminal Judges ⁽²⁾												
SEA - # of Criminal Judges	15	15	15	15	15	15	15	15	15	15	15	15
KNT - # of Criminal Judges	7	7	7	7	7	7	7	7	7	7	7	7
SEA - Drug Court Judge	1	1	1	1	1	1	1	1	1	1	1	1
Total Filings												
SEA - # of Cases Filed	270	349	279	217	283	254	261	308	377	306	326	331
KNT - # of Cases Filed	216	241	212	192	195	224	184	214	241	206	250	213
SEA %	56%	59%	57%	53%	59%	53%	59%	59%	61%	60%	57%	61%
KNT %	44%	41%	43%	47%	41%	47%	41%	41%	39%	40%	43%	39%
SEA - # of Cases per Judge	17	22	17	14	18	17	17	19	24	19	20	21
KNT - # of Cases per Judge	31	34	30	27	28	32	26	31	34	29	36	30
Total Resolutions												
SEA - # of Cases Resolved	320	318	283	321	281	271	214	242	275	286	280	271
KNT - # of Cases Resolved	171	216	210	216	206	169	152	194	224	200	211	228
SEA - Drug Court Cases Resolved	19	12	11	11	21	4	14	6	19	10	8	13
KNT - Drug Court Cases Resolved	4	1	4	4	6	2	8	5	2	6	2	9
SEA %	62%	58%	56%	58%	55%	61%	55%	54%	53%	57%	56%	52%
KNT %	33%	39%	41%	39%	40%	38%	39%	43%	43%	40%	42%	43%
SEA - Drug Court %	4%	2%	2%	2%	4%	1%	4%	1%	4%	2%	2%	2%
KNT - Drug Court %	1%	0%	1%	1%	1%	0%	2%	1%	0%	1%	0%	2%
SEA - # of Cases per Judge	21	21	18	21	19	18	15	16	18	19	18	18
KNT - # of Cases per Judge	25	31	30	31	30	24	23	28	32	29	30	34
Total Pending												
SEA - # of Cases Pending	1255	1401	1287	1205	1185	1170	1214	1270	1352	1370	1390	1422
KNT - # of Cases Pending	1264	1333	1267	1236	1196	1238	1260	1261	1253	1255	1279	1260
SEA - Drug Court Cases Pending	168	173	175	176	168	178	165	167	156	157	164	163
KNT - Drug Court Cases Pending	70	72	77	82	80	95	90	86	86	86	91	89
SEA %	46%	47%	46%	45%	45%	44%	45%	46%	47%	48%	48%	48%
KNT %	46%	45%	45%	46%	45%	46%	46%	45%	44%	44%	44%	43%
SEA - Drug Court %	6%	6%	6%	7%	6%	6%	6%	6%	5%	5%	6%	6%
KNT - Drug Court %	3%	3%	3%	3%	4%	4%	3%	3%	3%	3%	3%	3%
SEA - # of Cases per Judge	89	98	91	86	85	90	91	90	94	95	97	99
KNT - # of Cases per Judge	191	201	192	188	182	190	192	190	191	191	196	193

(1) Reflects all documents received by 07/15/2012.

(2) The number of judges does not include RJC chief judge and the criminal chief judge at SEA.

Table 8. Drug Court Statistics

King County Superior Court

Categories	Jun 2011	Jul 2011	Aug 2011	Sep 2011	Oct 2011	Nov 2011	Dec 2011	Jan 2012	Feb 2012	Mar 2012	Apr 2012	May 2012	Jun 2012
Referrals - Total	31	23	58	47	32	37	33	34	60	76	41	43	91
Directly from PA	23	17	43	28	21	34	11	15	46	49	22	34	63
From Mainstream	8	8	15	19	11	3	21	19	14	17	19	9	28
Arrestments in Drug Court ⁽¹⁾	25	13	20	30	24	26	10	10	24	40	30	25	37
GP in Drug Court ⁽²⁾	6	8	3	3	7	2	5	2	4	2	2	5	5
Return to mainstream ⁽³⁾	16	17	17	24	13	18	10	8	14	17	16	4	8
Opt-in ⁽⁴⁾	19	9	19	18	23	15	13	23	5	15	13	23	20
Graduations ⁽⁵⁾	10	17	7	9	12	20	1	18	7	16	12	8	18
Terminations ⁽⁶⁾	6	6	6	6	3	7	5	4	4	5	4	2	4

- (1) Arrestments held in drug court regardless opt-in status of the cases.
- (2) Guilty pleas entered in drug court before opt-in.
- (3) Referred to drug court but decision by court order to go to mainstream.
- (4) Opt-in reflects the court order of participation.
- (5) Graduations are dismissals of opted-in cases after the completion of program.
- (6) Terminations are cases that fail in drug court.