

King County Superior Court
Criminal Department Statistical Report

October 2012

Department of Judicial Administration
Prepared by: Shiquan Liao, Ph.D., Statistician

Release date: November 20, 2012

Report #: CRM-2012-10

Terminology

Age of Pending Case

Time (days) from filing to resolution, less suspense time if applicable.

Age of Resolved Case

Time (days) from filing to resolution, less suspense time if applicable.

End Pending

Number of pending cases at the end of reporting period.

Net Change in Pending

The change in number of pending cases (end pending minus previous pending).

Pending Case

A case is defined as pending if it is unresolved and not on suspense status.

Previous Pending

Number of pending cases at the beginning of reporting period.

Reactivated Case

A case returns to active from suspense status during the reporting period.

Resolution

A case is resolved if all issues in the complaint are fully adjudicated. However, a drug court case is reported as resolved only when dispositive document is also filed (completed).

Resolution Category

Five resolution categories are used to report resolution of criminal cases: jury trial (CVJV, AQJV), non-jury trial (CVCT, AQCT), guilty plea (GP, GPAT, GPJT), dismissal (DSM), and other (all other resolution codes). For criminal RALJ cases, the resolution categories are: RALJ decision (CDTA, CDTM, CDTR), dismissal (DSRM), and others (any other resolution codes).

Suspended Case

A case is placed in suspense status (removing from active) during the reporting period.

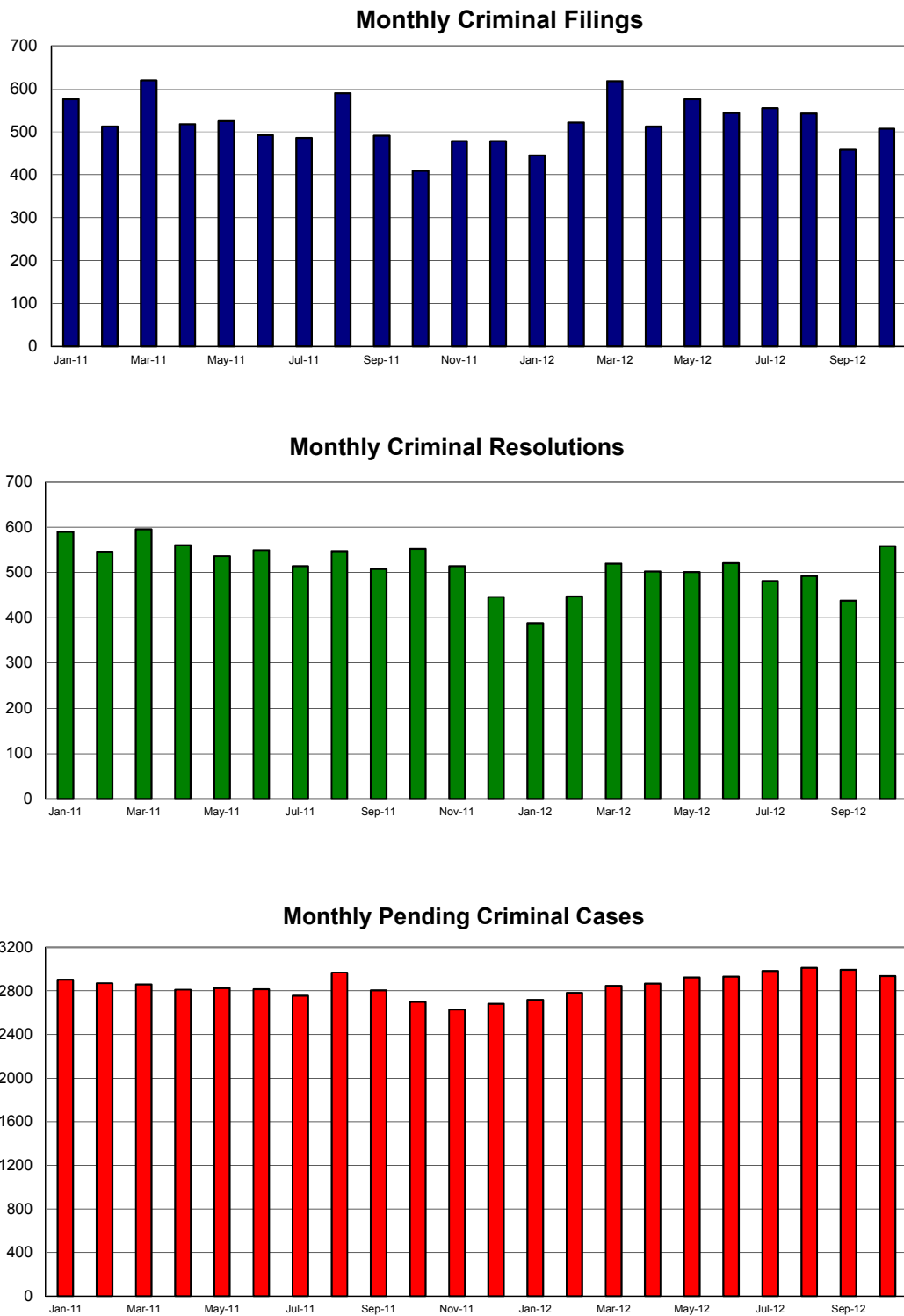
Suspense Status

A case is said to be on suspense status if it is on warrant or appeal.

Suspense Time

Time (days) a case is on suspense status.

Figure 1. Number of Criminal Filings, Resolutions and Pending Caseload by Month



Note: Starting January 2010, RALJ cases are included.

Figure 2. Crime Category as a Percentage of Total Filings by Year

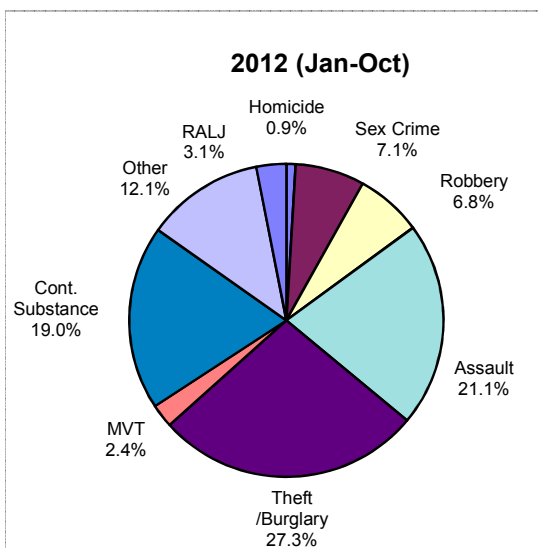
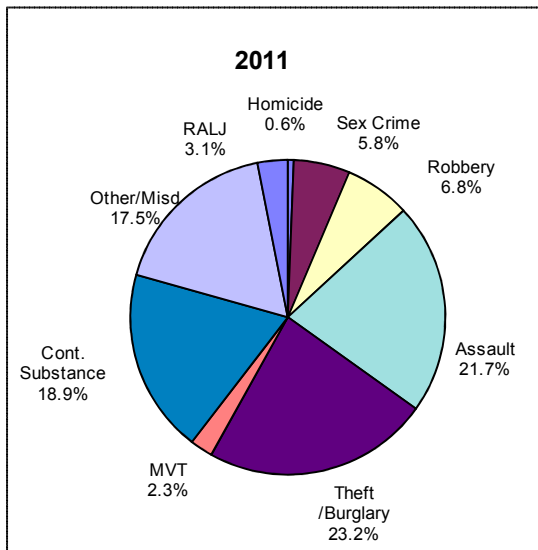
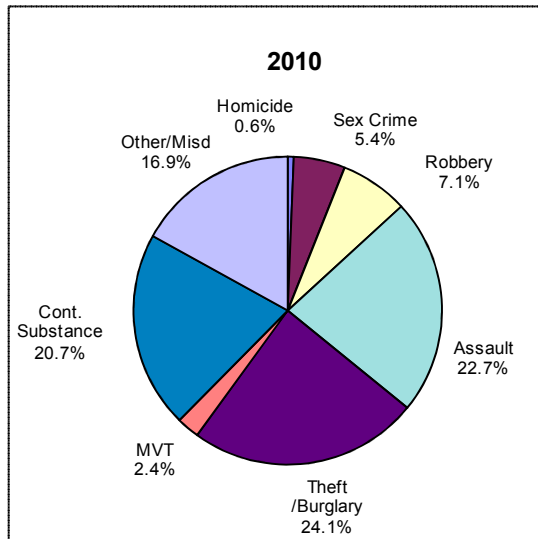


Table 1. Monthly Criminal New Filings by Crime Category (*)
King County Superior Court

	Jan	Feb	Mar	Apr	May	Jun	Jul	Aug	Sep	Oct	Nov	Dec	ADJ ⁽¹⁾	Annual
Total														
2010	515	554	610	512	587	666	574	563	532	608	535	611	(0)	6867
2011	576	513	620	518	525	492	486	590	491	409	478	478	(+2)	6178
2012 ⁽²⁾	445	522	618	512	576	544	555	543	458	507				
Total – DV Subset														
2009	NA	NA	NA	NA	NA	NA	NA	NA	NA	NA	NA	NA	NA	NA
2010	102	67	127	116	92	114	116	100	87	80	78	96	NA	1174
2011 ⁽²⁾	76	82	90	77	92	93	81	109	84	85				
Homicide														
2010	4	3	5	5	2	3	2	1	4	9	2	2	(0)	42
2011	3	3	2	1	3	5	3	4	2	3	2	7	(0)	38
2012 ⁽²⁾	4	2	7	4	7	2	7	7	7	3				
Homicide – DV Subset														
2010	NA	NA	NA	NA	NA	NA	NA	NA	NA	NA	NA	NA	NA	NA
2011	1	1	0	0	0	1	0	4	2	2	0	0	(0)	11
2012 ⁽²⁾	0	0	0	0	1	0	0	0	0	0				
Sex Crime														
2010	31	32	27	24	36	37	39	39	28	19	21	28	(+3)	364
2011	34	32	22	36	23	28	23	30	22	28	26	52	(0)	356
2012 ⁽²⁾	34	49	34	60	40	22	38	47	33	20				
Sex Crime – DV Subset														
2010	NA	NA	NA	NA	NA	NA	NA	NA	NA	NA	NA	NA	NA	NA
2011	6	4	2	4	3	3	0	4	2	7	3	1	(0)	39
2012 ⁽²⁾	2	6	3	0	3	1	2	7	4	2				
Robbery														
2010	54	43	58	42	34	39	32	35	37	33	23	48	(0)	478
2011	50	27	58	29	25	35	23	36	30	34	36	35	(0)	418
2012 ⁽²⁾	33	38	57	19	50	32	17	32	36	47				
Robbery – DV Subset														
2010	NA	NA	NA	NA	NA	NA	NA	NA	NA	NA	NA	NA	NA	NA
2011	3	1	3	4	2	1	1	0	1	0	2	0	(0)	18
2012 ⁽²⁾	3	0	1	0	0	0	1	2	0	5				
Aggravated Assault														
2010	107	122	125	117	119	138	139	133	136	132	115	137	(+26)	1546
2011	105	84	139	105	108	126	126	117	118	98	101	116	(0)	1343
2012 ⁽²⁾	91	95	110	104	118	121	115	123	114	124				
Aggravated Assault – DV Subset														
2010	NA	NA	NA	NA	NA	NA	NA	NA	NA	NA	NA	NA	NA	NA
2011	62	42	86	66	69	80	89	77	71	58	55	36	(0)	791
2012 ⁽²⁾	55	56	74	62	65	69	58	78	61	64				
Burglary/Theft /Larceny														
2010	125	149	141	125	126	137	125	137	134	147	115	153	(+12)	1626
2011	147	124	141	114	141	100	119	140	107	86	92	122	(1)	1434
2012 ⁽²⁾	141	134	178	160	156	121	175	144	119	114				
Burglary/Theft /Larceny – DV Subset														
2010	NA	NA	NA	NA	NA	NA	NA	NA	NA	NA	NA	NA	NA	NA
2011	14	8	11	8	7	7	11	9	7	5	3	0	(0)	90
2012 ⁽²⁾	6	5	6	8	2	7	8	4	9	4				
Motor Vehicle Theft														
2010	9	8	12	10	10	17	13	13	17	21	13	18	(0)	161
2011	14	20	12	9	5	9	12	18	12	10	13	11	(0)	145
2012 ⁽²⁾	18	19	15	5	13	7	10	19	11	10				
Motor Vehicle Theft – DV Subset														
2010	NA	NA	NA	NA	NA	NA	NA	NA	NA	NA	NA	NA	NA	NA
2011	1	0	0	0	0	0	1	2	1	0	1	1	(0)	7
2012 ⁽²⁾	1	1	1	0	1	0	0	2	0	0				

(*) The highest crime category in a case's history is used to classify cases. For example, a case charged with homicide at any time in the case's history is reported as a homicide regardless of whether the charge is reduced at resolution.

(1) "ADJ" = year-end adjustment.

(2) Reflects all documents received by 11/15/2012.

(3) DV Subset includes cases with a DV flag in at least one of the charges within the specific crime category at the time of the reporting.

Table 1 (cont.). Monthly Criminal New Filings by Crime Category (*)
King County Superior Court

	Jan	Feb	Mar	Apr	May	Jun	Jul	Aug	Sep	Oct	Nov	Dec	ADJ ⁽¹⁾	Annual
Controlled Substance														
2010	80	86	127	98	154	188	124	91	74	115	130	115	(-2)	1380
2011	120	108	107	99	104	97	65	120	100	82	99	67	(1)	1169
2012 ⁽²⁾	57	102	147	88	93	152	116	85	75	90				
Controlled Substance – DV Subset														
2010	NA	NA	NA	NA	NA	NA	NA	NA	NA	NA	NA	NA	NA	NA
2011	0	0	0	0	0	0	0	0	0	0	1	0	(0)	1
2012 ⁽²⁾	0	2	0	0	1	0	0	1	0	1				
Other														
2010	94	96	100	76	87	92	93	96	88	115	101	96	(-40)	1094
2011	83	97	123	110	97	71	99	108	84	57	99	56	(0)	1084
2012 ⁽²⁾	51	64	58	61	80	70	65	65	53	74				
Other – DV Subset														
2010	NA	NA	NA	NA	NA	NA	NA	NA	NA	NA	NA	NA	NA	NA
2011	13	11	25	38	11	22	14	8	5	7	13	52	(0)	219
2012 ⁽²⁾	9	12	5	7	19	16	13	15	10	9				
Criminal RALJ														
2010	11	15	15	15	19	15	7	18	14	17	15	14	(0)	176
2011	20	18	16	15	19	21	16	17	16	11	10	12	(0)	191
2012 ⁽²⁾	16	19	12	11	19	17	12	21	10	25				
RALJ - DV Subset														
2010	NA	NA	NA	NA	NA	NA	NA	NA	NA	NA	NA	NA	NA	NA
2011	2	0	0	0	0	0	0	0	0	0	0	0	(0)	2
2012 ⁽²⁾	0	0	0	0	0	0	0	0	0	0				
KNT Filing as % of Total														
2010	36%	40%	40%	39%	36%	38%	40%	36%	43%	39%	34%	41%		38%
2011	40%	42%	46%	43%	44%	45%	44%	41%	43%	47%	41%	47%		44%
2012 ⁽²⁾	41%	41%	39%	40%	43%	39%	43%	45%	41%	45%				

(*) The highest crime category in a case's history is used to classify cases. For example, a case charged with homicide at any time in the case's history is reported as a homicide regardless of whether the charge is reduced at resolution.

(1) "ADJ" = year-end adjustment.

(2) Reflects all documents received by **11/15/2012**.

(3) DV Subset includes cases with a DV flag in at least one of the charges within the specific crime category at the time of the reporting.

Table 2. Monthly Criminal Case Resolutions by Crime Category
King County Superior Court

	Jan	Feb	Mar	Apr	May	Jun	Jul	Aug	Sep	Oct	Nov	Dec	ADJ ⁽¹⁾	Annual
Total														
2010	535	528	582	587	554	556	597	601	570	599	454	510	(+70)	6743
2011	590	546	595	560	536	549	514	547	508	552	514	446	(+16)	6463
2012 ⁽²⁾	388	447	520	502	501	521	481	492	438	558				
Total – DV Subset														
2010	NA	NA	NA	NA	NA	NA	NA	NA	NA	NA	NA	NA	NA	NA
2011	109	103	49	121	105	92	110	122	117	108	102	89	(0)	1174
2012 ⁽²⁾	65	78	113	89	85	88	86	75	79	106				
Homicide														
2010	6	4	2	4	6	7	1	7	3	7	7	3	(0)	57
2011	5	6	3	5	4	3	2	5	3	8	4	1	(0)	49
2012 ⁽²⁾	1	5	2	6	3	5	4	1	5	2				
Homicide – DV Subset														
2010	NA	NA	NA	NA	NA	NA	NA	NA	NA	NA	NA	NA	NA	NA
2011	0	0	0	0	1	1	0	1	0	0	0	0	(0)	3
2012 ⁽²⁾	0	0	0	2	0	0	1	1	0	1				
Sex Crime														
2010	27	30	25	20	32	32	32	22	34	22	27	26	(+4)	333
2011	30	42	21	21	18	19	31	30	36	31	24	41	(+2)	346
2012 ⁽²⁾	37	27	37	39	33	38	33	47	31	56				
Sex Crime – DV Subset														
2010	NA	NA	NA	NA	NA	NA	NA	NA	NA	NA	NA	NA	NA	NA
2011	7	7	4	9	1	2	4	5	4	3	3	2	(0)	52
2012 ⁽²⁾	4	2	8	4	4	6	4	1	1	6				
Robbery														
2010	27	39	35	58	55	25	55	43	36	42	38	27	(+3)	483
2011	39	38	45	39	33	40	34	31	31	29	34	36	(-1)	428
2012 ⁽²⁾	31	42	34	38	32	52	33	37	29	33				
Robbery – DV Subset														
2010	NA	NA	NA	NA	NA	NA	NA	NA	NA	NA	NA	NA	NA	NA
2011	0	1	1	3	0	3	0	1	1	0	2	0	(0)	12
2012 ⁽²⁾	2	2	1	0	0	2	2	0	0	0				
Aggravated Assault														
2010	101	112	140	127	98	112	127	138	137	154	95	122	(+22)	1485
2011	117	123	131	121	117	100	107	119	129	133	127	98	(+2)	1424
2012 ⁽²⁾	74	96	137	111	126	99	108	85	94	123				
Aggravated Assault – DV Subset														
2010	NA	NA	NA	NA	NA	NA	NA	NA	NA	NA	NA	NA	NA	NA
2011	73	73	35	76	69	62	77	88	90	92	74	42	(0)	819
2012 ⁽²⁾	43	60	81	65	69	65	66	52	61	74				
Burglary/Theft /Larceny														
2010	115	107	137	140	123	124	114	151	112	115	92	109	(+17)	1456
2011	122	120	128	129	150	135	112	131	106	151	125	105	(+1)	1515
2012 ⁽²⁾	81	116	112	132	124	134	133	141	100	132				
Burglary/Theft /Larceny – DV Subset														
2010	NA	NA	NA	NA	NA	NA	NA	NA	NA	NA	NA	NA	NA	NA
2011	11	6	3	9	13	8	8	9	9	5	10	6	(0)	97
2012 ⁽²⁾	5	4	7	6	6	5	4	4	6	6				
Motor Vehicle Theft														
2010	12	12	20	13	7	7	9	13	13	19	6	14	(0)	145
2011	16	10	14	13	12	7	13	9	10	10	9	10	(0)	133
2012 ⁽²⁾	12	8	13	14	20	7	7	17	11	11				
Motor Vehicle Theft – DV Subset														
2010	NA	NA	NA	NA	NA	NA	NA	NA	NA	NA	NA	NA	NA	NA
2011	0	0	0	0	0	0	0	1	1	0	1	0	(0)	3
2012 ⁽²⁾	1	0	0	2	0	0	0	2	0	1				

The highest crime category in a case's history is used to classify cases. For example, a case charged with homicide at any time in the case's history is reported as a homicide regardless of whether the charge is reduced at resolution.

- (1) "ADJ" = year-end adjustment.
- (2) Reflects all documents received by 11/15/2012.
- (3) "Controlled Substance - Non Drug Court" are drug related cases that have never been accepted into drug court.
- (4) "Controlled Substance - Drug Court" are drug related cases that have been formally accepted into drug court (identified by "Order of Participation").
- (5) DV Subset includes cases with a DV flag in at least one of the charges within the specific crime category at the time of the reporting.

Table 2 (cont.). Monthly Criminal Case Resolutions by Crime Category
King County Superior Court

	Jan	Feb	Mar	Apr	May	Jun	Jul	Aug	Sep	Oct	Nov	Dec	ADJ ⁽¹⁾	Annual
Controlled Substance														
– Non Drug Court														
2010	103	104	102	96	87	103	108	105	97	88	87	92	(+14)	1186
2011	101	82	111	97	77	102	89	113	78	81	78	74	(+8)	1088
2012 ⁽²⁾	69	67	79	76	81	71	81	79	82	93				
Controlled Substance														
– Non Drug Court DV														
Subset														
2010	NA	NA	NA	NA	NA	NA	NA	NA	NA	NA	NA	NA	NA	NA
2011	0	0	1	0	1	0	0	0	1	0	0	3	(0)	6
2012 ⁽²⁾	0	0	1	1	1	0	1	0	0	2				
Drug Court														
2010	43	14	24	30	34	36	34	23	18	24	15	5	(+2)	302
2011	29	20	21	21	9	16	23	13	15	15	27	6	(0)	218
2012 ⁽²⁾	22	11	21	16	10	22	14	16	17	22				
Drug Court -DV Subset														
2010	NA	NA	NA	NA	NA	NA	NA	NA	NA	NA	NA	NA	NA	NA
2011	1	0	0	0	0	0	1	0	0	0	0	0	(0)	2
2012 ⁽²⁾	0	1	1	0	0	0	1	0	0	0				
Other														
2010	85	82	83	87	101	86	99	84	97	98	78	90	(+8)	1078
2011	111	91	105	100	104	107	88	81	83	80	72	57	(-4)	1075
2012 ⁽²⁾	45	62	68	60	53	76	54	55	51	73				
Other														
– DV Subset														
2010	NA	NA	NA	NA	NA	NA	NA	NA	NA	NA	NA	NA	NA	NA
2011	17	12	5	24	20	16	20	17	11	8	12	36	(0)	198
2012 ⁽²⁾	10	9	14	9	5	10	7	15	11	16				
Criminal RALJ														
2010	16	24	14	12	11	24	18	15	23	30	9	22	(0)	218
2011	20	14	16	14	12	20	15	15	17	14	14	18	(-2)	187
2012 ⁽²⁾	16	13	17	10	19	17	14	14	18	13				
RALJ - DV Subset														
2010	NA	NA	NA	NA	NA	NA	NA	NA	NA	NA	NA	NA	NA	NA
2011	0	2	0	0	0	0	0	0	0	0	0	0	(0)	2
2012 ⁽²⁾	0	0	0	0	0	0	0	0	0	0				
KNT Filing as % of Total														
2010	41%	44%	38%	36%	38%	39%	37%	37%	35%	37%	36%	37%		37%
2011	38%	34%	37%	40%	40%	33%	34%	40%	42%	40%	41%	38%		38%
2012 ⁽²⁾	41%	45%	44%	41%	43%	46%	39%	43%	44%	39%				

The highest crime category in a case's history is used to classify cases. For example, a case charged with homicide at any time in the case's history is reported as a homicide regardless of whether the charge is reduced at resolution.

- (1) "ADJ" = year-end adjustment.
- (2) Reflects all documents received by **11/15/2012**.
- (3) "Controlled Substance - Non Drug Court" are drug related cases that have never been accepted into drug court.
- (4) "Controlled Substance - Drug Court" are drug related cases that have been formally accepted into drug court (identified by "Order of Participation").
- (5) DV Subset includes cases with a DV flag in at least one of the charges within the specific crime category at the time of the reporting.

Table 3. Number of Cases Resolved and Resolution Category
King County Superior Court

Crime Category (*)	Nov 2011	Dec 2011	Jan 2012	Feb 2012	Mar 2012	Apr 2012	May 2012	Jun 2012	Jul 2012	Aug 2012	Sep 2012	Oct 2012
Homicide	4	1	1	5	2	6	3	5	4	1	5	2
Resolved by Jury Trial	1	1	0	3	0	1	0	0	0	0	1	0
Resolved by Non-Jury Trial	0	0	0	0	0	0	0	0	0	0	0	0
Resolved by Guilty Plea	3	0	1	2	2	4	2	4	4	1	4	2
Dismissal	0	0	0	0	0	1	1	1	0	0	0	0
Others	0	0	0	0	0	0	0	0	0	0	0	0
Sex Crime	24	41	37	27	37	39	33	38	33	47	31	56
Resolved by Jury Trial	5	3	1	3	5	2	1	5	1	2	3	4
Resolved by Non-Jury Trial	0	0	0	0	0	0	0	0	0	2	0	0
Resolved by Guilty Plea	16	32	28	20	26	36	27	26	29	36	25	44
Dismissal	3	6	8	4	6	1	5	7	9	7	3	8
Others	0	0	0	0	0	0	0	0	0	0	0	0
Robbery	34	36	31	42	34	38	32	52	33	37	29	33
Resolved by Jury Trial	1	2	3	3	1	2	1	4	3	5	2	1
Resolved by Non-Jury Trial	0	0	0	0	0	0	0	0	0	0	0	1
Resolved by Guilty Plea	26	29	26	39	29	34	25	46	25	30	23	27
Dismissal	7	5	2	0	3	2	6	2	5	2	4	4
Others	0	0	0	0	1	0	0	0	0	0	0	0
Aggravated Assault	127	98	74	96	137	111	126	99	108	85	94	123
Resolved by Jury Trial	5	8	1	6	11	6	3	4	7	4	0	5
Resolved by Non-Jury Trial	0	0	0	0	0	0	0	1	0	0	0	0
Resolved by Guilty Plea	109	77	64	78	108	90	111	87	84	69	85	105
Dismissal	13	13	9	12	18	15	12	7	16	12	9	13
Others	0	0	0	0	0	0	0	0	1	0	0	0
Burglary/Theft/Larceny	125	105	81	116	112	132	124	134	133	141	100	132
Resolved by Jury Trial	6	0	6	4	1	2	5	2	3	2	1	2
Resolved by Non-Jury Trial	0	0	0	0	0	0	0	0	0	0	0	1
Resolved by Guilty Plea	111	91	70	100	93	109	106	115	118	119	88	120
Dismissal	8	14	5	12	18	21	13	17	12	20	11	9
Others	0	0	0	0	0	0	0	0	0	0	0	0
Motor Vehicle Theft	9	10	12	8	13	14	20	7	7	17	11	11
Resolved by Jury Trial	0	0	0	0	0	0	0	1	0	0	1	0
Resolved by Non-Jury Trial	0	0	0	0	0	0	0	0	0	0	0	0
Resolved by Guilty Plea	9	9	11	7	12	13	14	6	6	14	8	11
Dismissal	0	1	1	1	1	1	6	0	1	3	2	0
Others	0	0	0	0	0	0	0	0	0	0	0	0
Controlled Substance - Non Drug Court⁽¹⁾	78	74	69	67	79	76	81	71	81	79	82	93
Resolved by Jury Trial	4	1	0	3	3	1	0	2	0	1	1	2
Resolved by Non-Jury Trial	0	1	1	1	1	0	0	1	0	0	0	0
Resolved by Guilty Plea	65	53	61	59	64	65	63	60	64	69	69	82
Dismissal	9	19	7	4	11	10	18	8	17	9	12	9
Others	0	0	0	0	0	0	0	0	0	0	0	0
Drug Court⁽²⁾	27	6	22	11	21	16	10	22	14	16	17	22
Resolved by Non-Jury Trial	5	2	3	2	5	1	1	4	4	2	1	1
Resolved by Guilty Plea	2	3	1	2	0	3	1	0	3	2	1	6
Dismissal	20	1	18	7	16	12	8	18	7	12	15	15
Others	0	0	0	0	0	0	0	0	0	0	0	0
Other	72	57	45	62	68	60	53	76	54	55	51	73
Resolved by Jury Trial	2	2	2	5	5	3	1	5	2	0	2	3
Resolved by Non-Jury Trial	0	0	0	0	0	0	0	1	0	0	0	1
Resolved by Guilty Plea	49	41	33	40	48	47	40	47	38	44	33	54
Dismissal	20	13	8	17	14	10	11	22	12	11	14	13
Others	1	1	2	0	1	0	1	1	2	0	2	1
Criminal RALJ	14	18	16	13	17	10	19	17	14	14	18	13
RALJ Decision	12	15	10	10	14	8	12	15	8	11	7	12
Dismissal	2	1	6	3	3	2	6	2	5	3	8	1
Others	0	2	0	0	0	0	1	0	1	0	3	0

(*) The highest crime category in a case's history is used to classify cases.

Reflects all documents received by **11/15/2012**.

(1) "Controlled Substance - Non Drug Court" are drug related cases that have never been accepted into drug court.

(2) "Controlled Substance - Drug Court" are drug related cases that have been formally accepted into drug court (identified by "Order of Participation").

(3) DV Subset includes cases with a DV flag in at least one of the charges within the specific crime category at the time of the reporting.

Table 4. Age (days) of Resolved Cases
King County Superior Court

Crime Category (*)	Nov 2011	Dec 2011	Jan 2012	Feb 2012	Mar 2012	Apr 2012	May 2012	Jun 2012	Jul 2012	Aug 2012	Sep 2012	Oct 2012
Homicide (**)												
50% Cases Resolved by Day	359	119	96	216	321	813	764	469	561	283	203	261
90% Cases Resolved by Day	505	119	96	930	347	916	877	1638	1189	283	559	462
Average Time (days)	336	119	96	418	321	644	597	586	630	283	278	261
Sex Crime												
50% Cases Resolved by Day	202	166	157	107	266	146	134	117	182	196	212	204
90% Cases Resolved by Day	458	539	380	501	811	426	414	403	354	549	765	528
Average Time (days)	213	235	171	180	338	186	183	215	188	256	302	251
DV - Subset												
50% Cases Resolved by Day	308	379	254	562	419	150	180	272	298	746	222	239
90% Cases Resolved by Day	666	650	369	763	1739	426	628	648	579	746	222	286
Average Time (days)	360	397	240	562	515	211	259	297	334	746	222	241
Robbery												
50% Cases Resolved by Day	140	89	125	130	138	92	111	137	104	160	110	117
90% Cases Resolved by Day	274	339	448	367	382	276	292	352	218	440	342	326
Average Time (days)	154	138	168	130	178	145	156	188	126	198	175	181
Aggravated Assault												
50% Cases Resolved by Day	95	83	84	74	95	96	93	84	95	85	81	92
90% Cases Resolved by Day	249	225	255	252	353	273	225	279	295	292	267	242
Average Time (days)	136	107	127	120	140	137	116	134	130	130	133	116
DV - Subset												
50% Cases Resolved by Day	76	76	78	71	84	81	68	82	78	77	64	78
90% Cases Resolved by Day	246	212	202	222	318	223	183	304	263	220	214	187
Average Time (days)	120	93	98	108	118	106	94	138	110	98	96	99
Burglary/Theft/Larceny												
50% Cases Resolved by Day	116	99	116	118	99	91	83	99	110	120	102	100
90% Cases Resolved by Day	286	290	265	324	277	344	276	237	232	371	295	224
Average Time (days)	164	128	134	154	130	142	120	128	129	154	140	130
DV - Subset												
50% Cases Resolved by Day	100	108	77	50	177	41	90	42	48	111	60	101
90% Cases Resolved by Day	191	241	210	714	232	87	276	320	112	231	243	140
Average Time (days)	104	118	116	207	139	47	124	146	60	128	90	92
Motor Vehicle Theft												
50% Cases Resolved by Day	51	104	110	76	125	120	97	119	70	95	73	67
90% Cases Resolved by Day	280	224	203	471	277	442	241	541	157	511	224	174
Average Time (days)	95	110	117	142	138	216	109	194	80	144	151	112
Controlled Substance - Non Drug Court ⁽¹⁾												
50% Cases Resolved by Day	113	107	98	92	112	108	88	98	83	77	104	109
90% Cases Resolved by Day	300	300	238	332	344	280	206	237	194	188	280	234
Average Time (days)	151	142	125	137	141	132	115	125	104	98	139	129

(*) The highest crime category in a case's history is used to classify cases. For example, a case charged with homicide at any time during the case's history is reported as a homicide regardless of whether the charge is reduced at resolution.

(**) Due to small number of resolutions in this category, the age statistics for homicides are expected to vary considerably.

Reflects all documents received by 11/15/2012.

(1) "Controlled Substance - Non Drug Court" are drug related cases that have never been accepted into drug court.

(2) "Controlled Substance - Drug Court" are drug related cases that have been formally accepted into drug court (identified by "Order of Participation").

(3) DV Subset includes cases with a DV flag in at least one of the charges within the specific crime category at the time of the reporting.

Table 4 (cont.). Age (days) of Resolved Cases
King County Superior Court

Crime Category ^(*)	Nov 2011	Dec 2011	Jan 2012	Feb 2012	Mar 2012	Apr 2012	May 2012	Jun 2012	Jul 2012	Aug 2012	Sep 2012	Oct 2012
Drug Court ⁽²⁾												
50% Cases Resolved by Day	622	570	582	525	643	499	642	497	623	609	509	578
90% Cases Resolved by Day	1205	847	1245	842	1165	1320	928	840	834	873	697	977
Average Time (days)	732	587	757	567	724	650	655	562	615	624	511	651
Other												
50% Cases Resolved by Day	81	104	86	86	92	83	78	91	89	77	76	127
90% Cases Resolved by Day	173	351	273	301	350	420	229	362	240	233	195	325
Average Time (days)	95	135	107	152	133	179	115	143	173	104	113	144
DV - Subset												
50% Cases Resolved by Day	71	64	73	217	78	70	73	68	96	49	108	69
90% Cases Resolved by Day	163	298	324	385	216	98	174	405	255	182	169	156
Average Time (days)	90	111	121	169	104	67	92	125	108	80	111	79
Criminal RALJ												
50% Cases Resolved by Day	264	256	234	228	276	262	260	296	254	290	231	292
90% Cases Resolved by Day	430	367	345	347	343	414	417	477	542	620	603	382
Average Time (days)	302	282	244	259	271	279	254	320	297	360	293	301

(*) The highest crime category in a case's history is used to classify cases. For example, a case charged with homicide at any time during the case's history is reported as a homicide regardless of whether the charge is reduced at resolution.

(**) Due to small number of resolutions in this category, the age statistics for homicides are expected to vary considerably.

Reflects all documents received by **11/15/2012**.

(1) "Controlled Substance - Non Drug Court" are drug related cases that have never been accepted into drug court.

(2) "Controlled Substance - Drug Court" are drug related cases that have been formally accepted into drug court (identified by "Order of Participation").

(3) DV Subset includes cases with a DV flag in at least one of the charges within the specific crime category at the time of the reporting.

Table 5. Pending Criminal Cases
King County Superior Court

Crime Category ^(*)	Oct 2011	Nov 2011	Dec 2011	Jan 2012	Feb 2012	Mar 2012	Apr 2012	May 2012	Jun 2012	Jul 2012	Aug 2012	Sep 2012	Oct 2012
Total													
Previous Pending	2806	2699	2629	2681	2719	2784	2847	2868	2924	2934	2985	3012	2994
New Filing (+)	409	478	478	445	522	618	512	576	544	555	543	458	507
Resolved (-)	552	514	449	388	447	520	502	501	521	481	492	438	558
End Pending	2699	2629	2681	2719	2784	2847	2868	2924	2934	2985	3012	2994	2938
End Pending- DV Subset	365	344	350	357	363	350	343	357	344	350	357	369	361
Homicide													
Previous Pending	46	42	41	46	47	46	49	52	51	53	56	64	63
New Filing (+)	3	2	7	4	2	7	4	7	2	7	7	7	3
Resolved (-)	8	4	1	1	5	2	6	3	5	4	1	5	2
End Pending	42	41	46	47	46	49	52	51	53	56	64	63	68
End Pending- DV Subset	5	6	6	6	6	6	5	6	6	6	5	5	4
Sex Crime													
Previous Pending	238	230	229	239	243	265	260	259	281	272	286	282	277
New Filing (+)	28	26	52	34	49	34	60	40	22	38	47	33	20
Resolved (-)	31	24	41	37	27	37	39	33	38	33	47	31	56
End Pending	230	229	239	243	265	260	259	281	272	286	282	277	251
End Pending- DV Subset	32	37	33	33	40	37	33	33	27	29	31	35	32
Robbery													
Previous Pending	165	171	171	173	179	168	188	180	191	174	169	163	162
New Filing (+)	34	36	35	33	38	57	19	50	32	17	32	36	47
Resolved (-)	29	34	36	31	42	34	38	32	52	33	37	29	33
End Pending	171	171	173	179	168	188	180	191	174	169	163	162	172
End Pending- DV Subset	4	3	5	5	4	3	5	5	3	2	2	3	7
Aggravated Assault													
Previous Pending	479	464	438	460	472	476	459	459	449	462	471	504	513
New Filing (+)	98	101	116	91	95	110	104	118	121	115	123	114	124
Resolved (-)	133	127	98	74	96	137	111	126	99	108	85	94	123
End Pending	464	438	460	472	476	459	459	449	462	471	504	513	518
End Pending- DV Subset	248	232	240	241	236	237	236	239	227	226	238	243	240
Burglary/Theft/Larceny													
Previous Pending	602	538	516	529	569	581	632	662	696	666	695	699	696
New Filing (+)	86	92	122	141	134	178	160	156	121	175	144	119	114
Resolved (-)	151	125	105	81	116	112	132	124	134	133	141	100	132
End Pending	538	516	529	569	581	632	662	696	666	695	699	696	663
End Pending- DV Subset	27	20	18	21	21	19	19	17	18	22	19	23	21
Motor Vehicle Theft													
Previous Pending	61	62	60	64	63	73	76	72	66	56	62	50	48
New Filing (+)	10	13	11	18	19	15	5	13	7	10	19	11	10
Resolved (-)	10	9	10	12	9	13	14	20	7	7	16	11	11
End Pending	62	60	64	63	73	76	72	66	56	62	50	48	44
End Pending- DV Subset	4	4	4	4	4	6	5	6	6	6	4	4	3
Controlled Substance - Non Drug Court ⁽¹⁾													
Previous Pending	439	424	420	417	397	435	466	470	457	514	530	516	483
Resolved (-)	81	78	74	69	67	79	76	81	71	81	79	82	93
End Pending	424	420	417	397	435	466	470	457	514	530	516	483	468
End Pending- DV Subset	0	1	0	0	2	2	1	1	1	0	1	2	1
Drug Court ⁽²⁾													
Previous Pending	252	258	248	273	255	253	242	243	255	252	247	254	274
New Filing (+)	23	15	13	23	5	15	14	23	20	15	24	42	25
Resolved (-)	15	27	6	22	11	21	16	10	22	14	16	17	22
End Pending	258	248	273	255	253	242	243	255	252	247	254	274	271
End Pending- DV Subset	4	4	6	6	5	4	4	6	6	4	5	6	6

(*) Information from filing to the reporting time is used to determine crime category for pending cases. The category for a case in this table is the highest crime category since filing. For example, a case initially charged with homicide is reported as a homicide regardless of whether or not the charge is reduced since filing. On the other hand, if the charge for a case is upgraded later, then the reporting category in later reports will reflect the upgraded (higher) crime category.

Reflects all documents received by **11/15/2012**. Drug court cases are identified by docket code "ORPAR" (Order for Participation).

DV Subset includes cases with a DV flag in at least one of the charges within the specific crime category at the time of the reporting.

Table 5 (Cont.). Pending Criminal Cases
King County Superior Court

Crime Category (*)	Oct 2011	Nov 2011	Dec 2011	Jan 2012	Feb 2012	Mar 2012	Apr 2012	May 2012	Jun 2012	Jul 2012	Aug 2012	Sep 2012	Oct 2012
Other													
Previous Pending	379	368	368	348	362	350	343	339	343	329	335	339	344
New Filing (+)	57	99	56	51	64	58	61	80	70	65	65	53	74
Resolved (-)	80	72	57	45	62	68	60	53	76	54	55	51	73
End Pending	368	368	348	362	350	343	339	343	329	335	339	344	335
End Pending- DV Subset	41	37	38	74	45	36	35	44	50	55	52	48	47
Criminal RALJ													
Previous Pending	145	142	138	132	132	137	132	132	135	136	134	141	134
New Filing (+)	11	10	12	16	19	12	11	19	17	12	21	10	25
Resolved (-)	14	14	18	16	13	17	10	19	17	14	14	18	13
End Pending	142	138	132	132	137	132	132	135	136	134	141	134	148
Total Pending Caseload													
SEA (%)	51%	52%	50%	50%	52%	53%	53%	53%	54%	54%	54%	54%	53%
KNT (%)	49%	48%	50%	50%	48%	47%	47%	47%	46%	46%	46%	46%	47%

(*) Information from filing to the reporting time is used to determine crime category for pending cases. The category for a case in this table is the highest crime category since filing. For example, a case initially charged with homicide is reported as a homicide regardless of whether or not the charge is reduced since filing. On the other hand, if the charge for a case is upgraded later, then the reporting category in later reports will reflect the upgraded (higher) crime category.

Reflects all documents received by **11/15/2012**. Drug court cases are identified by docket code "ORPAR" (Order for Participation).

DV Subset includes cases with a DV flag in at least one of the charges within the specific crime category at the time of the reporting.

Table 6. Age of Pending Criminal Cases
King County Superior Court

Crime Category (*)	Oct 2011	Nov 2011	Dec 2011	Jan 2012	Feb 2012	Mar 2012	Apr 2012	May 2012	Jun 2012	Jul 2012	Aug 2012	Sep 2012	Oct 2012
Total													
Age (days)													
Median (50 th percentile)	119	121	122	119	119	106	99	104	107	107	108	111	115
95 th percentile	592	583	596	607	629	643	650	669	675	669	677	679	660
# of Cases in Age Interval													
0 - 60 days (0 - 2 months)	761	784	835	802	863	1011	967	967	964	982	993	873	846
61-120 days (3 - 4 months)	605	524	499	569	549	512	610	640	638	639	629	705	678
121-180 days (5 - 6 months)	372	356	371	321	340	371	341	333	397	390	424	430	417
181-270 days (7 - 9 months)	356	353	346	368	358	319	306	327	293	314	319	363	374
> 270 days (> 9 months)	605	612	630	659	674	634	644	657	642	660	647	623	623
DV Subset - Age (days)													
Median (50 th percentile)	89	91	79	90	86	82	83	81	80	75	74	81	79
95 th percentile	511	531	557	588	577	593	598	624	580	587	579	584	615
# of Cases in Age Interval													
0 - 60 days (0 - 2 months)	134	131	144	142	134	152	139	153	146	149	159	147	147
61-120 days (3 - 4 months)	94	76	66	71	83	67	74	72	71	84	79	93	91
121-180 days (5 - 6 months)	42	51	51	38	40	49	46	34	37	34	37	45	44
181-270 days (7 - 9 months)	42	34	33	42	45	31	27	37	38	31	23	26	23
> 270 days (> 9 months)	53	52	56	64	61	51	57	61	52	52	59	58	56
Homicide													
Age (days)													
Median (50 th percentile)	240	252	208	230	233	209	178	170	177	197	199	217	223
95 th percentile	817	847	878	909	687	732	762	784	814	845	876	906	937
# of Cases in Age Interval													
0 - 60 days (0 - 2 months)	4	5	8	11	9	9	10	10	8	9	14	12	10
61-120 days (3 - 4 months)	8	5	5	2	9	11	8	9	10	8	7	9	13
121-180 days (5 - 6 months)	6	7	7	5	2	3	9	8	9	8	9	6	7
181-270 days (7 - 9 months)	6	6	6	9	6	5	3	3	6	10	12	12	8
> 270 days (> 9 months)	18	18	20	20	20	21	22	21	20	21	22	24	30
Sex Crime													
Age (days)													
Median (50 th percentile)	176	175	163	174	143	140	145	130	148	149	149	152	170
95 th percentile	645	675	706	659	636	664	693	669	709	730	700	692	680
# of Cases in Age Interval													
0 - 60 days (0 - 2 months)	47	46	61	64	74	67	57	74	64	60	73	58	42
61-120 days (3 - 4 months)	40	31	38	45	41	49	62	54	47	60	51	47	59
121-180 days (5 - 6 months)	33	39	30	18	32	39	30	39	50	47	44	50	38
181-270 days (7 - 9 months)	41	34	36	38	35	31	32	35	34	37	41	50	48
> 270 days (> 9 months)	69	79	74	78	83	74	78	79	77	82	73	72	64
DV Subset - Age (days)													
Median (50 th percentile)	256	224	237	284	209	159	190	211	234	168	197	193	118
95 th percentile	1058	1088	1119	1150	992	1210	1240	1271	1301	1332	1363	1393	1424
# of Cases in Age Interval													
0 - 60 days (0 - 2 months)	3	9	7	3	10	11	4	4	3	5	9	9	7
61-120 days (3 - 4 months)	4	1	3	8	6	2	8	9	3	3	1	5	9
121-180 days (5 - 6 months)	4	5	4	1	3	8	3	1	6	7	4	2	2
181-270 days (7 - 9 months)	6	4	5	4	4	3	4	6	5	3	5	7	4
> 270 days (> 9 months)	15	18	14	17	16	13	14	13	10	11	12	12	10
Robbery													
Age (days)													
Median (50 th percentile)	96	93	101	105	107	75	90	88	94	100	92	109	85
95 th percentile	540	582	601	580	609	618	634	542	572	603	537	542	476
# of Cases in Age Interval													
0 - 60 days (0 - 2 months)	55	68	58	58	62	91	70	64	65	55	54	57	72
61-120 days (3 - 4 months)	42	34	39	47	32	44	47	52	49	41	43	39	33
121-180 days (5 - 6 months)	22	20	29	23	24	25	19	31	25	28	30	26	25
181-270 days (7 - 9 months)	21	19	15	17	24	16	21	21	17	20	18	23	25
> 270 days (> 9 months)	31	30	32	34	26	22	23	23	18	25	18	17	17

(*) The highest crime category since filing is used to classify cases. For example, a case initially charged with homicide is reported as a homicide regardless of whether or not the charge is reduced since filing. On the other hand, if the charge for a case is upgraded later, then the reporting category in later reports will reflect the upgraded (higher) crime category.

Reflects all documents received by 11/15/2012.

- (1) "Controlled Substance - Non Drug Court" are drug related cases that have never been accepted into drug court.
- (2) "Controlled Substance - Drug Court" are drug related cases that have been formally accepted into drug court (identified by "Order of Participation").
- (3) DV Subset includes cases with a DV flag in at least one of the charges within the specific crime category at the time of the reporting.

Table 6 (cont.). Age of Pending Criminal Cases
King County Superior Court

Crime Category (*)	Oct 2011	Nov 2011	Dec 2011	Jan 2012	Feb 2012	Mar 2012	Apr 2012	May 2012	Jun 2012	Jul 2012	Aug 2012	Sep 2012	Oct 2012
Aggravated Assault													
Age (days)													
Median (50 th percentile)	89	84	80	90	93	93	84	79	81	75	74	83	80
95 th percentile	466	496	471	477	496	488	512	543	523	510	480	487	507
# of Cases in Age Interval													
0 - 60 days (0 - 2 months)	176	173	186	186	158	178	185	195	195	204	218	200	204
61-120 days (3 - 4 months)	113	96	98	105	119	100	97	88	100	110	126	145	135
121-180 days (5 - 6 months)	58	61	60	46	68	67	60	46	47	45	56	65	77
181-270 days (7 - 9 months)	55	46	51	62	51	48	41	45	44	39	37	38	37
> 270 days (> 9 months)	62	62	65	73	80	66	76	75	76	73	67	65	65
DV Subset - Age (days)													
Age (days)													
Median (50 th percentile)	77	72	67	92	78	68	63	71	68	68	67	74	69
95 th percentile	419	431	453	511	484	465	418	449	420	449	480	508	540
# of Cases in Age Interval													
0 - 60 days (0 - 2 months)	106	100	109	107	89	113	113	111	101	105	116	105	106
61-120 days (3 - 4 months)	65	57	52	52	59	48	46	52	55	57	55	65	62
121-180 days (5 - 6 months)	27	32	32	24	31	31	32	23	22	20	24	31	30
181-270 days (7 - 9 months)	26	22	20	27	24	20	15	21	22	19	15	15	14
> 270 days (> 9 months)	24	21	27	31	33	25	30	32	27	25	28	27	28
Burglary/Theft/Larceny													
Age (days)													
Median (50 th percentile)	99	111	96	86	78	69	68	73	83	89	87	88	99
95 th percentile	463	483	465	471	472	458	440	452	468	498	481	476	506
# of Cases in Age Interval													
0 - 60 days (0 - 2 months)	166	171	194	223	239	290	300	287	254	262	272	231	203
61-120 days (3 - 4 months)	146	116	107	117	131	131	155	198	206	180	162	191	193
121-180 days (5 - 6 months)	85	84	83	65	62	69	71	75	89	110	128	127	93
181-270 days (7 - 9 months)	69	70	65	73	66	61	46	50	47	50	55	68	94
> 270 days (> 9 months)	72	75	80	91	83	81	88	86	90	93	82	79	80
DV Subset - Age (days)													
Age (days)													
Median (50 th percentile)	84	106	103	60	77	83	50	52	57	50	46	69	66
95 th percentile	291	440	683	176	205	236	266	296	242	151	166	196	218
# of Cases in Age Interval													
0 - 60 days (0 - 2 months)	9	4	5	10	8	8	10	10	11	13	10	10	10
61-120 days (3 - 4 months)	12	9	5	2	4	5	3	3	5	5	5	7	5
121-180 days (5 - 6 months)	3	5	6	8	3	2	2	1	0	3	4	3	3
181-270 days (7 - 9 months)	1	1	1	0	6	4	4	2	2	1	0	2	3
> 270 days (> 9 months)	2	1	1	1	0	0	0	1	0	0	0	1	0
Motor Vehicle Theft													
Age (days)													
Median (50 th percentile)	94	110	111	100	93	90	97	108	109	115	91	75	98
95 th percentile	320	373	427	458	441	472	483	479	509	533	571	594	625
# of Cases in Age Interval													
0 - 60 days (0 - 2 months)	21	16	22	21	32	26	19	26	14	18	23	23	14
61-120 days (3 - 4 months)	16	16	12	12	11	16	24	11	15	16	4	6	11
121-180 days (5 - 6 months)	8	9	9	8	9	9	5	8	10	6	6	6	5
181-270 days (7 - 9 months)	9	9	9	8	8	9	11	10	5	7	6	3	4
> 270 days (> 9 months)	8	10	12	14	13	16	13	11	12	15	11	10	10

(*) The highest crime category since filing is used to classify cases. For example, a case initially charged with homicide is reported as a homicide regardless of whether or not the charge is reduced since filing. On the other hand, if the charge for a case is upgraded later, then the reporting category in later reports will reflect the upgraded (higher) crime category.

Reflects all documents received by 11/15/2012.

- (1) "Controlled Substance - Non Drug Court" are drug related cases that have never been accepted into drug court.
- (2) "Controlled Substance - Drug Court" are drug related cases that have been formally accepted into drug court (identified by "Order of Participation").
- (3) DV Subset includes cases with a DV flag in at least one of the charges within the specific crime category at the time of the reporting.

Table 6 (cont.) . Age of Pending Criminal Cases
King County Superior Court

Crime Category (*)	Oct 2011	Nov 2011	Dec 2011	Jan 2012	Feb 2012	Mar 2012	Apr 2012	May 2012	Jun 2012	Jul 2012	Aug 2012	Sep 2012	Oct 2012
Controlled Substance - Non Drug Court⁽¹⁾													
Age (days)	91	82	87	100	105	70	77	87	82	77	85	83	101
Median (50 th percentile)	500	526	555	590	589	528	558	589	514	485	548	546	577
95 th percentile													
# of Cases in Age Interval	144	164	151	114	148	211	194	164	205	236	195	153	153
0 - 60 days (0 - 2 months)	109	99	101	115	100	79	114	130	125	115	127	154	129
61-120 days (3 - 4 months)	60	42	64	64	66	64	57	51	82	72	74	62	71
121-180 days (5 - 6 months)	50	50	39	38	56	54	45	48	34	40	48	53	50
181-270 days (7 - 9 months)	61	65	62	66	65	58	60	64	68	67	72	61	65
> 270 days (> 9 months)													
Drug Court⁽²⁾													
Age (days)													
Median (50 th percentile)	406	399	397	401	421	431	446	441	437	442	448	411	393
95 th percentile	1183	1146	1095	931	1010	926	897	912	942	973	978	991	999
# of Cases in Age Interval													
0 - 60 days (0 - 2 months)	2	1	4	0	0	0	0	1	2	0	0	1	0
61-120 days (3 - 4 months)	5	7	6	6	4	2	2	0	7	8	7	9	2
121-180 days (5 - 6 months)	15	11	19	15	8	12	12	10	12	10	18	22	23
181-270 days (7 - 9 months)	35	40	43	38	33	27	30	31	31	29	26	44	48
> 270 days (> 9 months)	201	189	201	196	208	201	199	210	200	200	203	198	198
Other													
Age (days)													
Median (50 th percentile)	95	106	101	107	112	117	112	108	107	104	110	107	102
95 th percentile	455	471	502	533	562	592	543	569	559	590	621	578	630
# of Cases in Age Interval													
0 - 60 days (0 - 2 months)	121	119	130	100	106	118	111	117	121	109	113	109	113
61-120 days (3 - 4 months)	98	91	68	97	82	55	66	69	60	74	68	76	74
121-180 days (5 - 6 months)	49	52	42	48	45	60	56	37	38	38	38	41	44
181-270 days (7 - 9 months)	41	43	46	51	46	37	42	56	51	50	39	39	31
> 270 days (> 9 months)	59	63	62	66	71	73	62	64	59	64	81	79	73
DV Subset - Age (days)													
Median (50 th percentile)	95	119	71	48	70	71	89	52	49	63	76	81	83
95 th percentile	441	513	544	352	562	635	665	654	430	461	492	420	451
# of Cases in Age Interval													
0 - 60 days (0 - 2 months)	12	14	18	17	21	15	10	23	28	25	21	19	18
61-120 days (3 - 4 months)	10	5	3	7	11	8	12	7	6	16	16	14	3
121-180 days (5 - 6 months)	8	8	5	2	2	6	7	4	7	3	4	7	8
181-270 days (7 - 9 months)	5	5	7	9	6	1	1	5	5	7	3	2	1
> 270 days (> 9 months)	6	5	5	6	5	6	5	5	4	4	8	6	7
Criminal RALJ													
Age (days)													
Median (50 th percentile)	149	159	162	160	155	141	152	143	144	154	135	139	136
95 th percentile	327	344	334	365	328	424	449	480	510	425	355	371	357
# of Cases in Age Interval													
0 - 60 days (0 - 2 months)	25	21	21	25	35	31	21	29	36	29	31	29	35
61-120 days (3 - 4 months)	28	29	25	23	20	25	35	26	19	27	34	29	29
121-180 days (5 - 6 months)	36	31	28	29	24	23	20	28	35	26	21	25	34
181-270 days (7 - 9 months)	29	36	36	34	33	31	33	28	24	32	37	33	29
> 270 days (> 9 months)	24	21	22	21	25	22	23	24	22	20	18	18	21

(*) The highest crime category since filing is used to classify cases. For example, a case initially charged with homicide is reported as a homicide regardless of whether or not the charge is reduced since filing. On the other hand, if the charge for a case is upgraded later, then the reporting category in later reports will reflect the upgraded (higher) crime category.

Reflects all documents received by 11/15/2012.

- (1) "Controlled Substance - Non Drug Court" are drug related cases that have never been accepted into drug court.
- (2) "Controlled Substance - Drug Court" are drug related cases that have been formally accepted into drug court (identified by "Order of Participation").
- (3) DV Subset includes cases with a DV flag in at least one of the charges within the specific crime category at the time of the reporting.

Table 7. Comparison between SEA/KNT: Filings, Resolutions, and Pending Caseload
King County Superior Court

	Nov 2011	Dec 2011	Jan 2012	Feb 2012	Mar 2012	Apr 2012	May 2012	Jun 2012	Jul 2012	Aug 2012	Sep 2012	Oct 2012 ⁽¹⁾
# of Criminal Judges ⁽²⁾												
SEA - # of Criminal Judges	15	15	15	15	15	15	15	15	15	15	15	15
KNT - # of Criminal Judges	7	7	7	7	7	7	7	7	7	7	7	7
SEA - Drug Court Judge	1	1	1	1	1	1	1	1	1	1	1	1
Total Filings												
SEA - # of Cases Filed	283	254	261	308	377	306	326	331	314	299	269	279
KNT - # of Cases Filed	195	224	184	214	241	206	250	213	241	244	189	228
SEA %	59%	53%	59%	59%	61%	60%	57%	61%	57%	55%	59%	55%
KNT %	41%	47%	41%	41%	39%	40%	43%	39%	43%	45%	41%	45%
SEA - # of Cases per Judge	18	17	17	19	24	19	20	21	20	19	17	17
KNT - # of Cases per Judge	28	32	26	31	34	29	36	30	34	35	27	33
Total Resolutions												
SEA - # of Cases Resolved	281	271	214	242	275	286	280	271	284	270	233	327
KNT - # of Cases Resolved	206	169	152	194	224	200	211	228	185	206	188	209
SEA - Drug Court Cases Resolved	21	4	14	6	19	10	8	13	12	13	13	15
KNT - Drug Court Cases Resolved	6	2	8	5	2	6	2	9	2	3	4	7
SEA %	55%	61%	55%	54%	53%	57%	56%	52%	59%	55%	53%	59%
KNT %	40%	38%	39%	43%	43%	40%	42%	43%	38%	42%	43%	37%
SEA - Drug Court %	4%	1%	4%	1%	4%	2%	2%	2%	2%	3%	3%	3%
KNT - Drug Court %	1%	0%	2%	1%	0%	1%	0%	2%	0%	1%	1%	1%
SEA - # of Cases per Judge	19	18	15	16	18	19	18	18	18	17	14	21
KNT - # of Cases per Judge	30	24	23	28	32	29	30	34	27	30	27	31
Total Pending												
SEA - # of Cases Pending	1185	1170	1214	1270	1352	1370	1390	1422	1444	1472	1464	1415
KNT - # of Cases Pending	1196	1238	1260	1261	1253	1255	1279	1260	1294	1286	1256	1252
SEA - Drug Court Cases Pending	168	178	165	167	156	157	164	163	157	156	163	154
KNT - Drug Court Cases Pending	80	95	90	86	86	86	91	89	90	98	111	117
SEA %	45%	44%	45%	46%	47%	48%	48%	48%	48%	49%	49%	48%
KNT %	45%	46%	46%	45%	44%	44%	44%	43%	43%	43%	42%	43%
SEA - Drug Court %	6%	6%	6%	6%	5%	5%	6%	6%	5%	5%	5%	5%
KNT - Drug Court %	4%	4%	3%	3%	3%	3%	3%	3%	3%	3%	4%	4%
SEA - # of Cases per Judge	85	90	91	90	94	95	97	99	100	102	96	98
KNT - # of Cases per Judge	182	190	192	190	191	191	196	193	198	198	195	195

(1) Reflects all documents received by 11/15/2012.

(2) The number of judges does not include RJC chief judge and the criminal chief judge at SEA.

Table 8. Drug Court Statistics
King County Superior Court

Categories	Oct 2011	Nov 2011	Dec 2011	Jan 2012	Feb 2012	Mar 2012	Apr 2012	May 2012	Jun 2012	Jul 2012	Aug 2012	Sep 2012	Oct 2012
Referrals - Total	32	37	33	34	60	76	41	43	91	42	50	36	38
Directly from PA	21	34	11	15	46	49	22	34	63	26	28	22	18
From Mainstream	11	3	21	19	14	17	19	9	28	16	22	14	20
Arrestments in Drug Court ⁽¹⁾	24	26	10	10	24	40	30	25	37	36	25	15	35
GP in Drug Court ⁽²⁾	7	2	5	2	4	2	2	5	5	5	11	5	14
Return to mainstream ⁽³⁾	13	18	10	8	14	17	16	4	8	13	17	27	24
Opt-in ⁽⁴⁾	23	15	13	23	5	15	13	23	20	15	24	42	25
Graduations ⁽⁵⁾	12	20	1	18	7	16	12	8	18	7	12	15	15
Terminations ⁽⁶⁾	3	7	5	4	4	5	4	2	4	7	4	2	7

- (1) Arrestments held in drug court regardless opt-in status of the cases.
- (2) Guilty pleas entered in drug court before opt-in.
- (3) Referred to drug court but decision by court order to go to mainstream.
- (4) Opt-in reflects the court order of participation.
- (5) Graduations are dismissals of opted-in cases after the completion of program.
- (6) Terminations are cases that fail in drug court.