

King County Superior Court  
Criminal Department Statistical Report

December 2012

Department of Judicial Administration  
Prepared by: Shiquan Liao, Ph.D., Statistician

Release date: January 20, 2013

**Report #: CRM-2012-12**

## Terminology

### **Age of Pending Case**

Time (days) from filing to resolution, less suspense time if applicable.

### **Age of Resolved Case**

Time (days) from filing to resolution, less suspense time if applicable.

### **End Pending**

Number of pending cases at the end of reporting period.

### **Net Change in Pending**

The change in number of pending cases (end pending minus previous pending).

### **Pending Case**

A case is defined as pending if it is unresolved and not on suspense status.

### **Previous Pending**

Number of pending cases at the beginning of reporting period.

### **Reactivated Case**

A case returns to active from suspense status during the reporting period.

### **Resolution**

A case is resolved if all issues in the complaint are fully adjudicated. However, a drug court case is reported as resolved only when dispositive document is also filed (completed).

### **Resolution Category**

Five resolution categories are used to report resolution of criminal cases: jury trial (CVJV, AQJV), non-jury trial (CVCT, AQCT), guilty plea (GP, GPAT, GPJT), dismissal (DSM), and other (all other resolution codes). For criminal RALJ cases, the resolution categories are: RALJ decision (CDTA, CDTM, CDTR), dismissal (DSRM), and others (any other resolution codes).

### **Suspended Case**

A case is placed in suspense status (removing from active) during the reporting period.

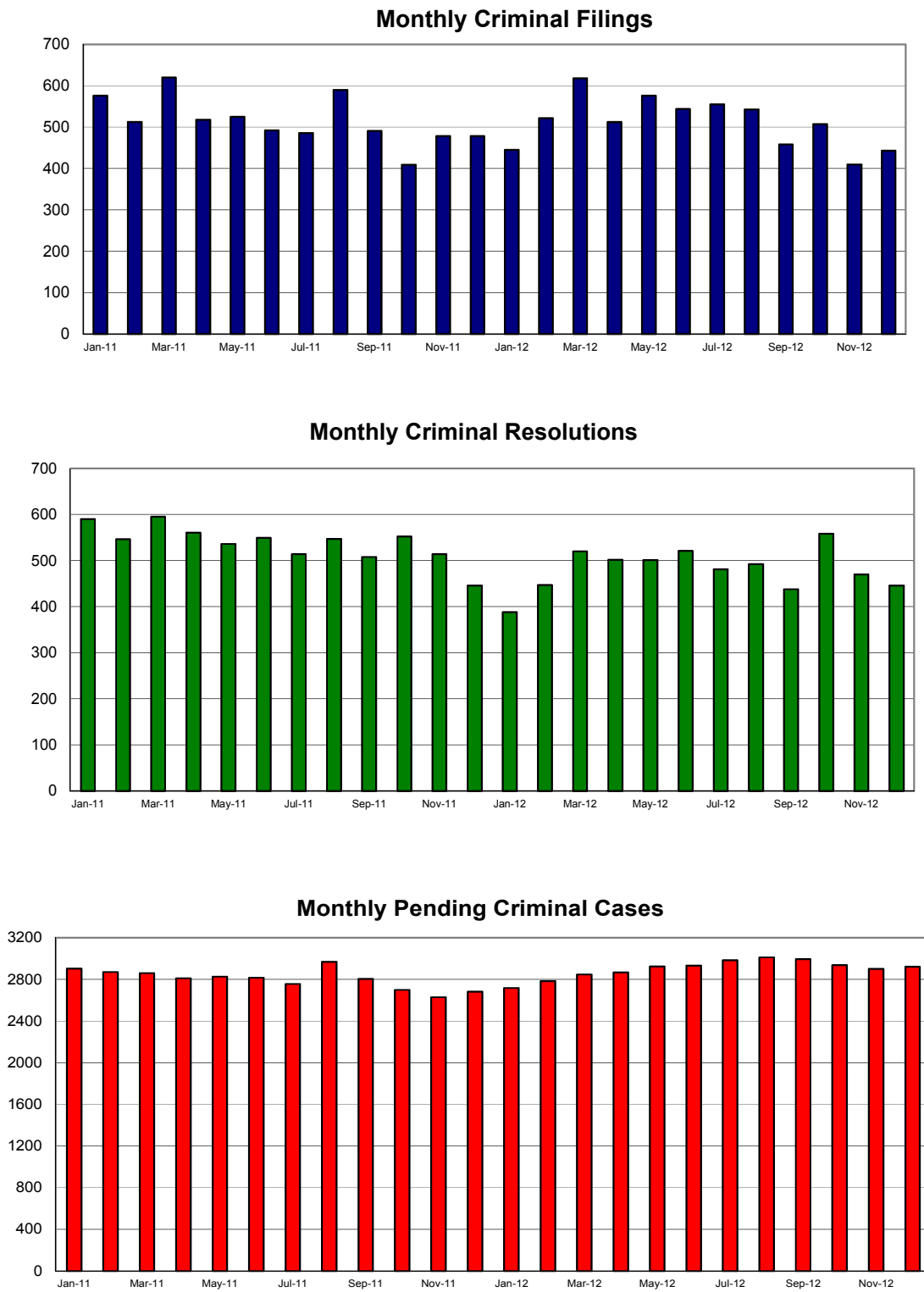
### **Suspense Status**

A case is said to be on suspense status if it is on warrant or appeal.

### **Suspense Time**

Time (days) a case is on suspense status.

Figure 1. Number of Criminal Filings, Resolutions and Pending Caseload by Month



Note: Starting January 2010, RALJ cases are included.

Figure 2. Crime Category as a Percentage of Total Filings by Year

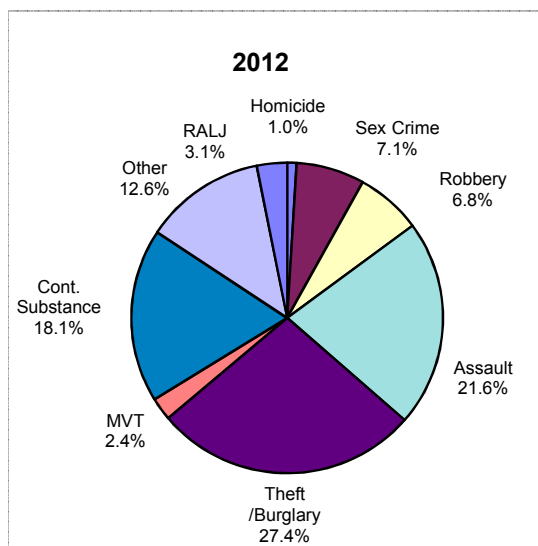
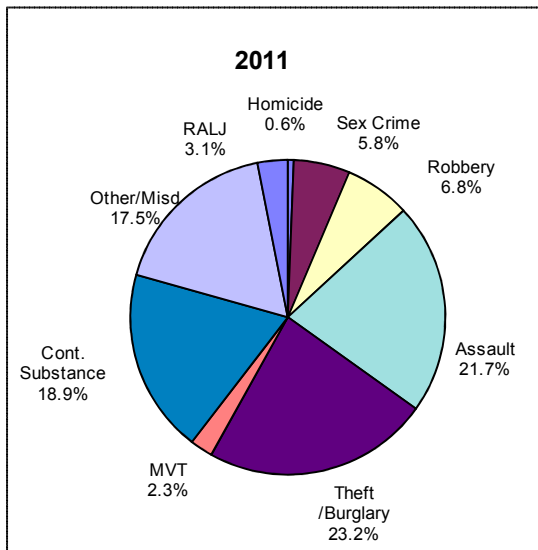
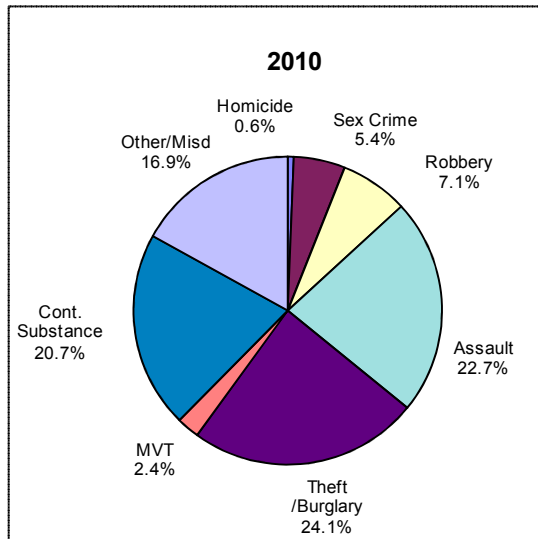


Table 1. Monthly Criminal New Filings by Crime Category (\*)  
King County Superior Court

	Jan	Feb	Mar	Apr	May	Jun	Jul	Aug	Sep	Oct	Nov	Dec	ADJ <sup>(1)</sup>	Annual
<b>Total</b>														
2010	515	554	610	512	587	666	574	563	532	608	535	611	(0)	6867
2011	576	513	620	518	525	492	486	590	491	409	478	478	(+2)	6178
2012 <sup>(2)</sup>	445	522	618	512	576	544	555	543	458	507	410	443	(+2)	6135
<b>Total – DV Subset</b>														
2009	NA	NA	NA	NA	NA	NA	NA	NA	NA	NA	NA	NA	NA	NA
2010	102	67	127	116	92	114	116	100	87	80	78	96	NA	1174
2011 <sup>(2)</sup>	76	82	90	77	92	93	81	109	84	85	101	82		
<b>Homicide</b>														
2010	4	3	5	5	2	3	2	1	4	9	2	2	(0)	42
2011	3	3	2	1	3	5	3	4	2	3	2	7	(0)	38
2012 <sup>(2)</sup>	4	2	7	4	7	2	7	7	7	3	6	4	(+2)	62
<b>Homicide – DV Subset</b>														
2010	NA	NA	NA	NA	NA	NA	NA	NA	NA	NA	NA	NA	NA	NA
2011	1	1	0	0	0	1	0	4	2	2	0	0	(0)	11
2012 <sup>(2)</sup>	0	0	0	0	1	0	0	0	0	0	1	0		
<b>Sex Crime</b>														
2010	31	32	27	24	36	37	39	39	28	19	21	28	(+3)	364
2011	34	32	22	36	23	28	23	30	22	28	26	52	(0)	356
2012 <sup>(2)</sup>	34	49	34	60	40	22	38	47	33	20	30	27	(+1)	435
<b>Sex Crime – DV Subset</b>														
2010	NA	NA	NA	NA	NA	NA	NA	NA	NA	NA	NA	NA	NA	NA
2011	6	4	2	4	3	3	0	4	2	7	3	1	(0)	39
2012 <sup>(2)</sup>	2	6	3	0	3	1	2	7	4	2	4	1		
<b>Robbery</b>														
2010	54	43	58	42	34	39	32	35	37	33	23	48	(0)	478
2011	50	27	58	29	25	35	23	36	30	34	36	35	(0)	418
2012 <sup>(2)</sup>	33	38	57	19	50	32	17	32	36	47	24	33	(+1)	419
<b>Robbery – DV Subset</b>														
2010	NA	NA	NA	NA	NA	NA	NA	NA	NA	NA	NA	NA	NA	NA
2011	3	1	3	4	2	1	1	0	1	0	2	0	(0)	18
2012 <sup>(2)</sup>	3	0	1	0	0	0	1	2	0	5	1	0		
<b>Aggravated Assault</b>														
2010	107	122	125	117	119	138	139	133	136	132	115	137	(+26)	1546
2011	105	84	139	105	108	126	126	117	118	98	101	116	(0)	1343
2012 <sup>(2)</sup>	91	95	110	104	118	121	115	123	114	124	106	101	(+14)	1336
<b>Aggravated Assault – DV Subset</b>														
2010	NA	NA	NA	NA	NA	NA	NA	NA	NA	NA	NA	NA	NA	NA
2011	62	42	86	66	69	80	89	77	71	58	55	36	(0)	791
2012 <sup>(2)</sup>	55	56	74	62	65	69	58	78	61	64	73	57		
<b>Burglary/Theft /Larceny</b>														
2010	125	149	141	125	126	137	125	137	134	147	115	153	(+12)	1626
2011	147	124	141	114	141	100	119	140	107	86	92	122	(1)	1434
2012 <sup>(2)</sup>	141	134	178	160	156	121	175	144	119	114	106	133	(+13)	1694
<b>Burglary/Theft /Larceny – DV Subset</b>														
2010	NA	NA	NA	NA	NA	NA	NA	NA	NA	NA	NA	NA	NA	NA
2011	14	8	11	8	7	7	11	9	7	5	3	0	(0)	90
2012 <sup>(2)</sup>	6	5	6	8	2	7	8	4	9	4	5	8		
<b>Motor Vehicle Theft</b>														
2010	9	8	12	10	10	17	13	13	17	21	13	18	(0)	161
2011	14	20	12	9	5	9	12	18	12	10	13	11	(0)	145
2012 <sup>(2)</sup>	18	19	15	5	13	7	10	19	11	10	7	12	(-6)	140
<b>Motor Vehicle Theft – DV Subset</b>														
2010	NA	NA	NA	NA	NA	NA	NA	NA	NA	NA	NA	NA	NA	NA
2011	1	0	0	0	0	0	1	2	1	0	1	1	(0)	7
2012 <sup>(2)</sup>	1	1	1	0	1	0	0	2	0	0	0	1		

(\*) The highest crime category in a case's history is used to classify cases. For example, a case charged with homicide at any time in the case's history is reported as a homicide regardless of whether the charge is reduced at resolution.

(1) "ADJ" = year-end adjustment.

(2) Reflects all documents received by 01/15/2013.

(3) DV Subset includes cases with a DV flag in at least one of the charges within the specific crime category at the time of the reporting.

Table 1 (cont.). Monthly Criminal New Filings by Crime Category (\*)  
King County Superior Court

	Jan	Feb	Mar	Apr	May	Jun	Jul	Aug	Sep	Oct	Nov	Dec	ADJ <sup>(1)</sup>	Annual
<b>Controlled Substance</b>														
2010	80	86	127	98	154	188	124	91	74	115	130	115	(-2)	1380
2011	120	108	107	99	104	97	65	120	100	82	99	67	(1)	1169
2012 <sup>(2)</sup>	57	102	147	88	93	152	116	85	75	90	53	51	(-1)	1108
<b>Controlled Substance - DV Subset</b>														
2010	NA	NA	NA	NA	NA	NA	NA	NA	NA	NA	NA	NA	NA	NA
2011	0	0	0	0	0	0	0	0	0	0	1	0	(0)	1
2012 <sup>(2)</sup>	0	2	0	0	1	0	0	1	0	1	1	0		
<b>Other</b>														
2010	94	96	100	76	87	92	93	96	88	115	101	96	(-40)	1094
2011	83	97	123	110	97	71	99	108	84	57	99	56	(0)	1084
2012 <sup>(2)</sup>	51	64	58	61	80	70	65	65	53	74	64	66	(-22)	749
<b>Other - DV Subset</b>														
2010	NA	NA	NA	NA	NA	NA	NA	NA	NA	NA	NA	NA	NA	NA
2011	13	11	25	38	11	22	14	8	5	7	13	52	(0)	219
2012 <sup>(2)</sup>	9	12	5	7	19	16	13	15	10	9	16	15		
<b>Criminal RALJ</b>														
2010	11	15	15	15	19	15	7	18	14	17	15	14	(0)	176
2011	20	18	16	15	19	21	16	17	16	11	10	12	(0)	191
2012 <sup>(2)</sup>	16	19	12	11	19	17	12	21	10	25	14	16	(0)	192
<b>RALJ - DV Subset</b>														
2010	NA	NA	NA	NA	NA	NA	NA	NA	NA	NA	NA	NA	NA	NA
2011	2	0	0	0	0	0	0	0	0	0	0	0	(0)	2
2012 <sup>(2)</sup>	0	0	0	0	0	0	0	0	0	0	0	0		
<b>KNT Filing as % of Total</b>														
2010	36%	40%	40%	39%	36%	38%	40%	36%	43%	39%	34%	41%		38%
2011	40%	42%	46%	43%	44%	45%	44%	41%	43%	47%	41%	47%		44%
2012 <sup>(2)</sup>	41%	41%	39%	40%	43%	39%	43%	45%	41%	45%	47%	47%		42%

(\*) The highest crime category in a case's history is used to classify cases. For example, a case charged with homicide at any time in the case's history is reported as a homicide regardless of whether the charge is reduced at resolution.

(1) "ADJ" = year-end adjustment.

(2) Reflects all documents received by **01/15/2013**.

(3) DV Subset includes cases with a DV flag in at least one of the charges within the specific crime category at the time of the reporting.

Table 2. Monthly Criminal Case Resolutions by Crime Category  
King County Superior Court

	Jan	Feb	Mar	Apr	May	Jun	Jul	Aug	Sep	Oct	Nov	Dec	ADJ <sup>(1)</sup>	Annual
<b>Total</b>														
2010	535	528	582	587	554	556	597	601	570	599	454	510	(+70)	6743
2011	590	546	595	560	536	549	514	547	508	552	514	446	(+16)	6463
2012 <sup>(2)</sup>	388	447	520	502	501	521	481	492	438	558	470	446	(+18)	5782
<b>Total – DV Subset</b>														
2010	NA	NA	NA	NA	NA	NA	NA	NA	NA	NA	NA	NA	NA	NA
2011	109	103	49	121	105	92	110	122	117	108	102	89	(0)	1174
2012 <sup>(2)</sup>	65	78	113	89	85	88	86	75	79	106	106			
<b>Homicide</b>														
2010	6	4	2	4	6	7	1	7	3	7	7	3	(0)	57
2011	5	6	3	5	4	3	2	5	3	8	4	1	(0)	49
2012 <sup>(2)</sup>	1	5	2	6	3	5	4	1	5	2	2	5	(0)	41
<b>Homicide – DV Subset</b>														
2010	NA	NA	NA	NA	NA	NA	NA	NA	NA	NA	NA	NA	NA	NA
2011	0	0	0	0	1	1	0	1	0	0	0	0	(0)	3
2012 <sup>(2)</sup>	0	0	0	2	0	0	1	1	0	1	0	0		
<b>Sex Crime</b>														
2010	27	30	25	20	32	32	32	22	34	22	27	26	(+4)	333
2011	30	42	21	21	18	19	31	30	36	31	24	41	(+2)	346
2012 <sup>(2)</sup>	37	27	37	39	33	38	33	47	31	56	28	25	(+4)	435
<b>Sex Crime – DV Subset</b>														
2010	NA	NA	NA	NA	NA	NA	NA	NA	NA	NA	NA	NA	NA	NA
2011	7	7	4	9	1	2	4	5	4	3	3	2	(0)	52
2012 <sup>(2)</sup>	4	2	8	4	4	6	4	1	1	6	4	1		
<b>Robbery</b>														
2010	27	39	35	58	55	25	55	43	36	42	38	27	(+3)	483
2011	39	38	45	39	33	40	34	31	31	29	34	36	(-1)	428
2012 <sup>(2)</sup>	31	42	34	38	32	52	33	37	29	33	27	25	(0)	413
<b>Robbery – DV Subset</b>														
2010	NA	NA	NA	NA	NA	NA	NA	NA	NA	NA	NA	NA	NA	NA
2011	0	1	1	3	0	3	0	1	1	0	2	0	(0)	12
2012 <sup>(2)</sup>	2	2	1	0	0	2	2	0	0	0	0	0		
<b>Aggravated Assault</b>														
2010	101	112	140	127	98	112	127	138	137	154	95	122	(+22)	1485
2011	117	123	131	121	117	100	107	119	129	133	127	98	(+2)	1424
2012 <sup>(2)</sup>	74	96	137	111	126	99	108	85	94	123	128	107	(+3)	1291
<b>Aggravated Assault – DV Subset</b>														
2010	NA	NA	NA	NA	NA	NA	NA	NA	NA	NA	NA	NA	NA	NA
2011	73	73	35	76	69	62	77	88	90	92	74	42	(0)	819
2012 <sup>(2)</sup>	43	60	81	65	69	65	66	52	61	74	79	51		
<b>Burglary/Theft /Larceny</b>														
2010	115	107	137	140	123	124	114	151	112	115	92	109	(+17)	1456
2011	122	120	128	129	150	135	112	131	106	151	125	105	(+1)	1515
2012 <sup>(2)</sup>	81	116	112	132	124	134	133	141	100	132	103	115	(+3)	1426
<b>Burglary/Theft /Larceny – DV Subset</b>														
2010	NA	NA	NA	NA	NA	NA	NA	NA	NA	NA	NA	NA	NA	NA
2011	11	6	3	9	13	8	8	9	9	5	10	6	(0)	97
2012 <sup>(2)</sup>	5	4	7	6	6	5	4	4	6	6	10	5		
<b>Motor Vehicle Theft</b>														
2010	12	12	20	13	7	7	9	13	13	19	6	14	(0)	145
2011	16	10	14	13	12	7	13	9	10	10	9	10	(0)	133
2012 <sup>(2)</sup>	12	8	13	14	20	7	7	17	11	11	9	8	(+1)	138
<b>Motor Vehicle Theft – DV Subset</b>														
2010	NA	NA	NA	NA	NA	NA	NA	NA	NA	NA	NA	NA	NA	NA
2011	0	0	0	0	0	0	0	1	1	0	1	0	(0)	3
2012 <sup>(2)</sup>	1	0	0	2	0	0	0	2	0	1	0	0		

The highest crime category in a case's history is used to classify cases. For example, a case charged with homicide at any time in the case's history is reported as a homicide regardless of whether the charge is reduced at resolution.

- (1) "ADJ" = year-end adjustment.
- (2) Reflects all documents received by 01/15/2013.
- (3) "Controlled Substance - Non Drug Court" are drug related cases that have never been accepted into drug court.
- (4) "Controlled Substance - Drug Court" are drug related cases that have been formally accepted into drug court (identified by "Order of Participation").
- (5) DV Subset includes cases with a DV flag in at least one of the charges within the specific crime category at the time of the reporting.

Table 2 (cont.). Monthly Criminal Case Resolutions by Crime Category  
King County Superior Court

	Jan	Feb	Mar	Apr	May	Jun	Jul	Aug	Sep	Oct	Nov	Dec	ADJ <sup>(1)</sup>	Annual
<b>Controlled Substance</b>														
<b>- Non Drug Court</b>														
2010	103	104	102	96	87	103	108	105	97	88	87	92	(+14)	1186
2011	101	82	111	97	77	102	89	113	78	81	78	74	(+8)	1088
2012 <sup>(2)</sup>	69	67	79	76	81	71	81	79	82	93	57	78	(+11)	916
<b>Controlled Substance</b>														
<b>- Non Drug Court DV</b>														
<b>Subset</b>														
2010	NA	NA	NA	NA	NA	NA	NA	NA	NA	NA	NA	NA	NA	NA
2011	0	0	1	0	1	0	0	0	1	0	0	3	(0)	6
2012 <sup>(2)</sup>	0	0	1	1	1	0	1	0	0	2	1	0		
<b>Drug Court</b>														
2010	43	14	24	30	34	36	34	23	18	24	15	5	(+2)	302
2011	29	20	21	21	9	16	23	13	15	15	27	6	(0)	218
2012 <sup>(2)</sup>	22	11	21	16	10	22	14	16	17	22	23	2	(0)	204
<b>Drug Court -DV Subset</b>														
2010	NA	NA	NA	NA	NA	NA	NA	NA	NA	NA	NA	NA	NA	NA
2011	1	0	0	0	0	0	1	0	0	0	0	0	(0)	2
2012 <sup>(2)</sup>	0	1	1	0	0	0	1	0	0	0	1	1		
<b>Other</b>														
2010	85	82	83	87	101	86	99	84	97	98	78	90	(+8)	1078
2011	111	91	105	100	104	107	88	81	83	80	72	57	(-4)	1075
2012 <sup>(2)</sup>	45	62	68	60	53	76	54	55	51	73	69	67	(-1)	732
<b>Other</b>														
<b>- DV Subset</b>														
2010	NA	NA	NA	NA	NA	NA	NA	NA	NA	NA	NA	NA	NA	NA
2011	17	12	5	24	20	16	20	17	11	8	12	36	(0)	198
2012 <sup>(2)</sup>	10	9	14	9	5	10	7	15	11	16	11	9		
<b>Criminal RALJ</b>														
2010	16	24	14	12	11	24	18	15	23	30	9	22	(0)	218
2011	20	14	16	14	12	20	15	15	17	14	14	18	(-2)	187
2012 <sup>(2)</sup>	16	13	17	10	19	17	14	14	18	13	24	14	(-3)	186
<b>RALJ - DV Subset</b>														
2010	NA	NA	NA	NA	NA	NA	NA	NA	NA	NA	NA	NA	NA	NA
2011	0	2	0	0	0	0	0	0	0	0	0	0	(0)	2
2012 <sup>(2)</sup>	0	0	0	0	0	0	0	0	0	0	0	0		
<b>KNT Filing as % of Total</b>														
2010	41%	44%	38%	36%	38%	39%	37%	37%	35%	37%	36%	37%		37%
2011	38%	34%	37%	40%	40%	33%	34%	40%	42%	40%	41%	38%		38%
2012 <sup>(2)</sup>	41%	45%	44%	41%	43%	46%	39%	43%	44%	39%	42%	41%		42%

The highest crime category in a case's history is used to classify cases. For example, a case charged with homicide at any time in the case's history is reported as a homicide regardless of whether the charge is reduced at resolution.

- (1) "ADJ" = year-end adjustment.
- (2) Reflects all documents received by **01/15/2013**.
- (3) "Controlled Substance - Non Drug Court" are drug related cases that have never been accepted into drug court.
- (4) "Controlled Substance - Drug Court" are drug related cases that have been formally accepted into drug court (identified by "Order of Participation").
- (5) DV Subset includes cases with a DV flag in at least one of the charges within the specific crime category at the time of the reporting.



Table 3. Number of Cases Resolved and Resolution Category  
King County Superior Court

Crime Category (*)	Jan 2012	Feb 2012	Mar 2012	Apr 2012	May 2012	Jun 2012	Jul 2012	Aug 2012	Sep 2012	Oct 2012	Nov 2012	Dec 2012
<b>Homicide</b>	<b>1</b>	<b>5</b>	<b>2</b>	<b>6</b>	<b>3</b>	<b>5</b>	<b>4</b>	<b>1</b>	<b>5</b>	<b>2</b>	<b>2</b>	
Resolved by Jury Trial	0	3	0	1	0	0	0	0	1	0	0	5
Resolved by Non-Jury Trial	0	0	0	0	0	0	0	0	0	0	0	2
Resolved by Guilty Plea	1	2	2	4	2	4	4	1	4	2	2	1
Dismissal	0	0	0	1	1	1	0	0	0	0	0	2
Others	0	0	0	0	0	0	0	0	0	0	0	0
<b>Sex Crime</b>	<b>37</b>	<b>27</b>	<b>37</b>	<b>39</b>	<b>33</b>	<b>38</b>	<b>33</b>	<b>47</b>	<b>31</b>	<b>56</b>	<b>28</b>	<b>25</b>
Resolved by Jury Trial	1	3	5	2	1	5	1	2	3	4	0	1
Resolved by Non-Jury Trial	0	0	0	0	0	0	0	2	0	0	0	0
Resolved by Guilty Plea	28	20	26	36	27	26	29	36	25	44	27	21
Dismissal	8	4	6	1	5	7	9	7	3	8	1	3
Others	0	0	0	0	0	0	0	0	0	0	0	0
<b>Robbery</b>	<b>31</b>	<b>42</b>	<b>34</b>	<b>38</b>	<b>32</b>	<b>52</b>	<b>33</b>	<b>37</b>	<b>29</b>	<b>33</b>	<b>27</b>	<b>25</b>
Resolved by Jury Trial	3	3	1	2	1	4	3	5	2	1	3	0
Resolved by Non-Jury Trial	0	0	0	0	0	0	0	0	0	1	0	0
Resolved by Guilty Plea	26	39	29	34	25	46	25	30	23	27	21	21
Dismissal	2	0	3	2	6	2	5	2	4	4	3	4
Others	0	0	1	0	0	0	0	0	0	0	0	0
<b>Aggravated Assault</b>	<b>74</b>	<b>96</b>	<b>137</b>	<b>111</b>	<b>126</b>	<b>99</b>	<b>108</b>	<b>85</b>	<b>94</b>	<b>123</b>	<b>128</b>	<b>107</b>
Resolved by Jury Trial	1	6	11	6	3	4	7	4	0	5	7	6
Resolved by Non-Jury Trial	0	0	0	0	0	1	0	0	0	0	2	0
Resolved by Guilty Plea	64	78	108	90	111	87	84	69	85	105	108	92
Dismissal	9	12	18	15	12	7	16	12	9	13	10	9
Others	0	0	0	0	0	0	1	0	0	0	1	0
<b>Burglary/Theft/Larceny</b>	<b>81</b>	<b>116</b>	<b>112</b>	<b>132</b>	<b>124</b>	<b>134</b>	<b>133</b>	<b>141</b>	<b>100</b>	<b>132</b>	<b>103</b>	<b>115</b>
Resolved by Jury Trial	6	4	1	2	5	2	3	2	1	2	2	2
Resolved by Non-Jury Trial	0	0	0	0	0	0	0	0	0	1	0	1
Resolved by Guilty Plea	70	100	93	109	106	115	118	119	88	120	89	106
Dismissal	5	12	18	21	13	17	12	20	11	9	12	6
Others	0	0	0	0	0	0	0	0	0	0	0	0
<b>Motor Vehicle Theft</b>	<b>12</b>	<b>8</b>	<b>13</b>	<b>14</b>	<b>20</b>	<b>7</b>	<b>7</b>	<b>17</b>	<b>11</b>	<b>11</b>	<b>9</b>	<b>8</b>
Resolved by Jury Trial	0	0	0	0	0	1	0	0	1	0	0	0
Resolved by Non-Jury Trial	0	0	0	0	0	0	0	0	0	0	0	0
Resolved by Guilty Plea	11	7	12	13	14	6	6	14	8	11	8	8
Dismissal	1	1	1	1	6	0	1	3	2	0	1	0
Others	0	0	0	0	0	0	0	0	0	0	0	0
<b>Controlled Substance - Non Drug Court<sup>(1)</sup></b>	<b>69</b>	<b>67</b>	<b>79</b>	<b>76</b>	<b>81</b>	<b>71</b>	<b>81</b>	<b>79</b>	<b>82</b>	<b>93</b>	<b>57</b>	<b>78</b>
Resolved by Jury Trial	0	3	3	1	0	2	0	1	1	2	0	0
Resolved by Non-Jury Trial	1	1	1	0	0	1	0	0	0	0	0	0
Resolved by Guilty Plea	61	59	64	65	63	60	64	69	69	82	50	65
Dismissal	7	4	11	10	18	8	17	9	12	9	7	13
Others	0	0	0	0	0	0	0	0	0	0	0	0
<b>Drug Court<sup>(2)</sup></b>	<b>22</b>	<b>11</b>	<b>21</b>	<b>16</b>	<b>10</b>	<b>22</b>	<b>14</b>	<b>16</b>	<b>17</b>	<b>22</b>	<b>23</b>	<b>2</b>
Resolved by Non-Jury Trial	3	2	5	1	1	4	4	2	1	1	4	1
Resolved by Guilty Plea	1	2	0	3	1	0	3	2	1	6	4	1
Dismissal	18	7	16	12	8	18	7	12	15	15	15	0
Others	0	0	0	0	0	0	0	0	0	0	0	0
<b>Other</b>	<b>45</b>	<b>62</b>	<b>68</b>	<b>60</b>	<b>53</b>	<b>76</b>	<b>54</b>	<b>55</b>	<b>51</b>	<b>73</b>	<b>69</b>	<b>67</b>
Resolved by Jury Trial	2	5	5	3	1	5	2	0	2	3	2	2
Resolved by Non-Jury Trial	0	0	0	0	0	1	0	0	0	1	1	1
Resolved by Guilty Plea	33	40	48	47	40	47	38	44	33	54	49	46
Dismissal	8	17	14	10	11	22	12	11	14	13	16	17
Others	2	0	1	0	1	1	2	0	2	1	1	1
<b>Criminal RALJ</b>	<b>16</b>	<b>13</b>	<b>17</b>	<b>10</b>	<b>19</b>	<b>17</b>	<b>14</b>	<b>14</b>	<b>18</b>	<b>13</b>	<b>24</b>	<b>14</b>
RALJ Decision	10	10	14	8	12	15	8	11	7	12	6	6
Dismissal	6	3	3	2	6	2	5	3	8	1	10	4
Others	0	0	0	0	1	0	1	0	3	0	6	4

(\*) The highest crime category in a case's history is used to classify cases.

Reflects all documents received by **01/15/2013**.

(1) "Controlled Substance - Non Drug Court" are drug related cases that have never been accepted into drug court.

(2) "Controlled Substance - Drug Court" are drug related cases that have been formally accepted into drug court (identified by "Order of Participation").

(3) DV Subset includes cases with a DV flag in at least one of the charges within the specific crime category at the time of the reporting.

Table 4. Age (days) of Resolved Cases  
King County Superior Court

Crime Category (*)	Jan 2012	Feb 2012	Mar 2012	Apr 2012	May 2012	Jun 2012	Jul 2012	Aug 2012	Sep 2012	Oct 2012	Nov 2012	Dec 2012
<b>Homicide (**)</b>												
50% Cases Resolved by Day	96	216	321	813	764	469	561	283	203	261	667	357
90% Cases Resolved by Day	96	930	347	916	877	1638	1189	283	559	462	678	972
Average Time (days)	96	418	321	644	597	586	630	283	278	261	667	397
<b>Sex Crime</b>												
50% Cases Resolved by Day	157	107	266	146	134	117	182	196	212	204	93	201
90% Cases Resolved by Day	380	501	811	426	414	403	354	549	765	528	287	701
Average Time (days)	171	180	338	186	183	215	188	256	302	251	170	308
<b>DV - Subset</b>												
50% Cases Resolved by Day	254	562	419	150	180	272	298	746	222	239	166	1842
90% Cases Resolved by Day	369	763	1739	426	628	648	579	746	222	286	893	1842
Average Time (days)	240	562	515	211	259	297	334	746	222	241	326	1842
<b>Robbery</b>												
50% Cases Resolved by Day	125	130	138	92	111	137	104	160	110	117	109	146
90% Cases Resolved by Day	448	367	382	276	292	352	218	440	342	326	254	266
Average Time (days)	168	130	178	145	156	188	126	198	175	181	140	165
<b>Aggravated Assault</b>												
50% Cases Resolved by Day	84	74	95	96	93	84	95	85	81	92	102	88
90% Cases Resolved by Day	255	252	353	273	225	279	295	292	267	242	300	182
Average Time (days)	127	120	140	137	116	134	130	130	133	116	130	101
<b>DV - Subset</b>												
50% Cases Resolved by Day	78	71	84	81	68	82	78	77	64	78	84	64
90% Cases Resolved by Day	202	222	318	223	183	304	263	220	214	187	260	168
Average Time (days)	98	108	118	106	94	138	110	98	96	99	110	82
<b>Burglary/Theft/Larceny</b>												
50% Cases Resolved by Day	116	118	99	91	83	99	110	120	102	100	111	111
90% Cases Resolved by Day	265	324	277	344	276	237	232	371	295	224	247	237
Average Time (days)	134	154	130	142	120	128	129	154	140	130	127	136
<b>DV - Subset</b>												
50% Cases Resolved by Day	77	50	177	41	90	42	48	111	60	101	134	58
90% Cases Resolved by Day	210	714	232	87	276	320	112	231	243	140	211	146
Average Time (days)	116	207	139	47	124	146	60	128	90	92	122	81
<b>Motor Vehicle Theft</b>												
50% Cases Resolved by Day	110	76	125	120	97	119	70	95	73	67	86	73
90% Cases Resolved by Day	203	471	277	442	241	541	157	511	224	174	256	139
Average Time (days)	117	142	138	216	109	194	80	144	151	112	99	74
<b>Controlled Substance - Non Drug Court (1)</b>												
50% Cases Resolved by Day	98	92	112	108	88	98	83	77	104	109	116	137
90% Cases Resolved by Day	238	332	344	280	206	237	194	188	280	234	217	263
Average Time (days)	125	137	141	132	115	125	104	98	139	129	141	152

(\*) The highest crime category in a case's history is used to classify cases. For example, a case charged with homicide at any time during the case's history is reported as a homicide regardless of whether the charge is reduced at resolution.

(\*\*) Due to small number of resolutions in this category, the age statistics for homicides are expected to vary considerably.

Reflects all documents received by 01/15/2013.

(1) "Controlled Substance - Non Drug Court" are drug related cases that have never been accepted into drug court.

(2) "Controlled Substance - Drug Court" are drug related cases that have been formally accepted into drug court (identified by "Order of Participation").

(3) DV Subset includes cases with a DV flag in at least one of the charges within the specific crime category at the time of the reporting.

Table 4 (cont.). Age (days) of Resolved Cases  
King County Superior Court

Crime Category <sup>(*)</sup>	Jan 2012	Feb 2012	Mar 2012	Apr 2012	May 2012	Jun 2012	Jul 2012	Aug 2012	Sep 2012	Oct 2012	Nov 2012	Dec 2012
<b>Drug Court <sup>(2)</sup></b>												
50% Cases Resolved by Day	582	525	643	499	642	497	623	609	509	578	588	325
90% Cases Resolved by Day	1245	842	1165	1320	928	840	834	873	697	977	983	437
Average Time (days)	757	567	724	650	655	562	615	624	511	651	673	325
<b>Other</b>												
50% Cases Resolved by Day	86	86	92	83	78	91	89	77	76	127	113	100
90% Cases Resolved by Day	273	301	350	420	229	362	240	233	195	325	308	254
Average Time (days)	107	152	133	179	115	143	173	104	113	144	131	123
<b>DV - Subset</b>												
50% Cases Resolved by Day	73	217	78	70	73	68	96	49	108	69	91	117
90% Cases Resolved by Day	324	385	216	98	174	405	255	182	169	156	220	301
Average Time (days)	121	169	104	67	92	125	108	80	111	79	118	133
<b>Criminal RALJ</b>												
50% Cases Resolved by Day	234	228	276	262	260	296	254	290	231	292	234	241
90% Cases Resolved by Day	345	347	343	414	417	477	542	620	603	382	517	343
Average Time (days)	244	259	271	279	254	320	297	360	293	301	217	280

(\*) The highest crime category in a case's history is used to classify cases. For example, a case charged with homicide at any time during the case's history is reported as a homicide regardless of whether the charge is reduced at resolution.

(\*\*) Due to small number of resolutions in this category, the age statistics for homicides are expected to vary considerably.

Reflects all documents received by **01/15/2013**.

(1) "Controlled Substance - Non Drug Court" are drug related cases that have never been accepted into drug court.

(2) "Controlled Substance - Drug Court" are drug related cases that have been formally accepted into drug court (identified by "Order of Participation").

(3) DV Subset includes cases with a DV flag in at least one of the charges within the specific crime category at the time of the reporting.

Table 5. Pending Criminal Cases  
King County Superior Court

Crime Category <sup>(*)</sup>	Dec 2011	Jan 2012	Feb 2012	Mar 2012	Apr 2012	May 2012	Jun 2012	Jul 2012	Aug 2012	Sep 2012	Oct 2012	Nov 2012	Dec 2012
<b>Total</b>													
Previous Pending	2629	2681	2719	2784	2847	2868	2924	2934	2985	3012	2994	2938	2900
New Filing (+)	478	445	522	618	512	576	544	555	543	458	507	410	443
Resolved (-)	449	388	447	520	502	501	521	481	492	438	558	470	446
<b>End Pending</b>	<b>2681</b>	<b>2719</b>	<b>2784</b>	<b>2847</b>	<b>2868</b>	<b>2924</b>	<b>2934</b>	<b>2985</b>	<b>3012</b>	<b>2994</b>	<b>2938</b>	<b>2900</b>	<b>2922</b>
<b>End Pending- DV Subset</b>	<b>350</b>	<b>357</b>	<b>363</b>	<b>350</b>	<b>343</b>	<b>357</b>	<b>344</b>	<b>350</b>	<b>357</b>	<b>369</b>	<b>361</b>	<b>349</b>	<b>390</b>
<b>Homicide</b>													
Previous Pending	41	46	47	46	49	52	51	53	56	64	63	68	75
New Filing (+)	7	4	2	7	4	7	2	7	7	7	3	6	4
Resolved (-)	1	1	5	2	6	3	5	4	1	5	2	2	5
<b>End Pending</b>	<b>46</b>	<b>47</b>	<b>46</b>	<b>49</b>	<b>52</b>	<b>51</b>	<b>53</b>	<b>56</b>	<b>64</b>	<b>63</b>	<b>68</b>	<b>75</b>	<b>72</b>
<b>End Pending- DV Subset</b>	<b>6</b>	<b>6</b>	<b>6</b>	<b>6</b>	<b>5</b>	<b>6</b>	<b>6</b>	<b>6</b>	<b>5</b>	<b>5</b>	<b>4</b>	<b>5</b>	<b>4</b>
<b>Sex Crime</b>													
Previous Pending	229	239	243	265	260	259	281	272	286	282	277	251	248
New Filing (+)	52	34	49	34	60	40	22	38	47	33	20	30	27
Resolved (-)	41	37	27	37	39	33	38	33	47	31	56	28	25
<b>End Pending</b>	<b>239</b>	<b>243</b>	<b>265</b>	<b>260</b>	<b>259</b>	<b>281</b>	<b>272</b>	<b>286</b>	<b>282</b>	<b>277</b>	<b>251</b>	<b>248</b>	<b>247</b>
<b>End Pending- DV Subset</b>	<b>33</b>	<b>33</b>	<b>40</b>	<b>37</b>	<b>33</b>	<b>33</b>	<b>27</b>	<b>29</b>	<b>31</b>	<b>35</b>	<b>32</b>	<b>30</b>	<b>31</b>
<b>Robbery</b>													
Previous Pending	171	173	179	168	188	180	191	174	169	163	162	172	184
New Filing (+)	35	33	38	57	19	50	32	17	32	36	47	24	33
Resolved (-)	36	31	42	34	38	32	52	33	37	29	33	27	25
<b>End Pending</b>	<b>173</b>	<b>179</b>	<b>168</b>	<b>188</b>	<b>180</b>	<b>191</b>	<b>174</b>	<b>169</b>	<b>163</b>	<b>162</b>	<b>172</b>	<b>184</b>	<b>187</b>
<b>End Pending- DV Subset</b>	<b>5</b>	<b>5</b>	<b>4</b>	<b>3</b>	<b>5</b>	<b>5</b>	<b>3</b>	<b>2</b>	<b>2</b>	<b>3</b>	<b>7</b>	<b>10</b>	<b>9</b>
<b>Aggravated Assault</b>													
Previous Pending	438	460	472	476	459	459	449	462	471	504	513	518	488
New Filing (+)	116	91	95	110	104	118	121	115	123	114	124	106	101
Resolved (-)	98	74	96	137	111	126	99	108	85	94	123	128	107
<b>End Pending</b>	<b>460</b>	<b>472</b>	<b>476</b>	<b>459</b>	<b>459</b>	<b>449</b>	<b>462</b>	<b>471</b>	<b>504</b>	<b>513</b>	<b>518</b>	<b>488</b>	<b>505</b>
<b>End Pending- DV Subset</b>	<b>240</b>	<b>241</b>	<b>236</b>	<b>237</b>	<b>236</b>	<b>239</b>	<b>227</b>	<b>226</b>	<b>238</b>	<b>243</b>	<b>240</b>	<b>228</b>	<b>262</b>
<b>Burglary/Theft/Larceny</b>													
Previous Pending	516	529	569	581	632	662	696	666	695	699	696	663	670
New Filing (+)	122	141	134	178	160	156	121	175	144	119	114	106	133
Resolved (-)	105	81	116	112	132	124	134	133	141	100	132	103	115
<b>End Pending</b>	<b>529</b>	<b>569</b>	<b>581</b>	<b>632</b>	<b>662</b>	<b>696</b>	<b>666</b>	<b>695</b>	<b>699</b>	<b>696</b>	<b>663</b>	<b>670</b>	<b>692</b>
<b>End Pending- DV Subset</b>	<b>18</b>	<b>21</b>	<b>21</b>	<b>19</b>	<b>19</b>	<b>17</b>	<b>18</b>	<b>22</b>	<b>19</b>	<b>23</b>	<b>21</b>	<b>20</b>	<b>25</b>
<b>Motor Vehicle Theft</b>													
Previous Pending	60	64	63	73	76	72	66	56	62	50	48	44	46
New Filing (+)	11	18	19	15	5	13	7	10	19	11	10	7	12
Resolved (-)	10	12	9	13	14	20	7	7	16	11	11	9	8
<b>End Pending</b>	<b>64</b>	<b>63</b>	<b>73</b>	<b>76</b>	<b>72</b>	<b>66</b>	<b>56</b>	<b>62</b>	<b>50</b>	<b>48</b>	<b>44</b>	<b>46</b>	<b>50</b>
<b>End Pending- DV Subset</b>	<b>4</b>	<b>4</b>	<b>4</b>	<b>6</b>	<b>5</b>	<b>6</b>	<b>6</b>	<b>6</b>	<b>4</b>	<b>4</b>	<b>3</b>	<b>3</b>	<b>3</b>
<b>Controlled Substance - Non Drug Court <sup>(1)</sup></b>													
Previous Pending	420	417	397	435	466	470	457	514	530	516	483	468	451
Resolved (-)	74	69	67	79	76	81	71	81	79	82	93	57	78
<b>End Pending</b>	<b>417</b>	<b>397</b>	<b>435</b>	<b>466</b>	<b>470</b>	<b>457</b>	<b>514</b>	<b>530</b>	<b>516</b>	<b>483</b>	<b>468</b>	<b>451</b>	<b>425</b>
<b>End Pending- DV Subset</b>	<b>0</b>	<b>0</b>	<b>2</b>	<b>2</b>	<b>1</b>	<b>1</b>	<b>1</b>	<b>0</b>	<b>1</b>	<b>2</b>	<b>1</b>	<b>1</b>	<b>1</b>
<b>Drug Court <sup>(2)</sup></b>													
Previous Pending	248	273	255	253	242	243	255	252	247	254	274	271	270
New Filing (+)	13	23	5	15	14	23	20	15	24	42	25	25	13
Resolved (-)	6	22	11	21	16	10	22	14	16	17	22	23	2
<b>End Pending</b>	<b>273</b>	<b>255</b>	<b>253</b>	<b>242</b>	<b>243</b>	<b>255</b>	<b>252</b>	<b>247</b>	<b>254</b>	<b>274</b>	<b>271</b>	<b>270</b>	<b>276</b>
<b>End Pending- DV Subset</b>	<b>6</b>	<b>6</b>	<b>5</b>	<b>4</b>	<b>4</b>	<b>6</b>	<b>6</b>	<b>4</b>	<b>5</b>	<b>6</b>	<b>6</b>	<b>5</b>	<b>5</b>

(\*) Information from filing to the reporting time is used to determine crime category for pending cases. The category for a case in this table is the highest crime category since filing. For example, a case initially charged with homicide is reported as a homicide regardless of whether or not the charge is reduced since filing. On the other hand, if the charge for a case is upgraded later, then the reporting category in later reports will reflect the upgraded (higher) crime category.

Reflects all documents received by **01/15/2013**. Drug court cases are identified by docket code "ORPAR" (Order for Participation).

DV Subset includes cases with a DV flag in at least one of the charges within the specific crime category at the time of the reporting.

Table 5 (Cont.). Pending Criminal Cases  
King County Superior Court

Crime Category (*)	Dec 2011	Jan 2012	Feb 2012	Mar 2012	Apr 2012	May 2012	Jun 2012	Jul 2012	Aug 2012	Sep 2012	Oct 2012	Nov 2012	Dec 2012
<b>Other</b>													
Previous Pending	368	348	362	350	343	339	343	329	335	339	344	335	328
New Filing (+)	56	51	64	58	61	80	70	65	65	53	74	64	66
Resolved (-)	57	45	62	68	60	53	76	54	55	51	73	69	67
<b>End Pending</b>	<b>348</b>	<b>362</b>	<b>350</b>	<b>343</b>	<b>339</b>	<b>343</b>	<b>329</b>	<b>335</b>	<b>339</b>	<b>344</b>	<b>335</b>	<b>328</b>	<b>326</b>
<b>End Pending- DV Subset</b>	<b>38</b>	<b>74</b>	<b>45</b>	<b>36</b>	<b>35</b>	<b>44</b>	<b>50</b>	<b>55</b>	<b>52</b>	<b>48</b>	<b>47</b>	<b>47</b>	<b>50</b>
<b>Criminal RALJ</b>													
Previous Pending	138	132	132	137	132	132	135	136	134	141	134	148	140
New Filing (+)	12	16	19	12	11	19	17	12	21	10	25	14	16
Resolved (-)	18	16	13	17	10	19	17	14	14	18	13	24	14
<b>End Pending</b>	<b>132</b>	<b>132</b>	<b>137</b>	<b>132</b>	<b>132</b>	<b>135</b>	<b>136</b>	<b>134</b>	<b>141</b>	<b>134</b>	<b>148</b>	<b>140</b>	<b>142</b>
<b>Total Pending Caseload</b>													
SEA (%)	50%	50%	52%	53%	53%	53%	54%	54%	54%	54%	53%	54%	52%
KNT (%)	50%	50%	48%	47%	47%	47%	46%	46%	46%	46%	47%	46%	48%

(\*) Information from filing to the reporting time is used to determine crime category for pending cases. The category for a case in this table is the highest crime category since filing. For example, a case initially charged with homicide is reported as a homicide regardless of whether or not the charge is reduced since filing. On the other hand, if the charge for a case is upgraded later, then the reporting category in later reports will reflect the upgraded (higher) crime category.

Reflects all documents received by **01/15/2013**. Drug court cases are identified by docket code "ORPAR" (Order for Participation).

DV Subset includes cases with a DV flag in at least one of the charges within the specific crime category at the time of the reporting.

Table 6. Age of Pending Criminal Cases  
King County Superior Court

Crime Category (*)	Dec 2011	Jan 2012	Feb 2012	Mar 2012	Apr 2012	May 2012	Jun 2012	Jul 2012	Aug 2012	Sep 2012	Oct 2012	Nov 2012	Dec 2012
<b>Total</b>													
<b>Age (days)</b>													
Median (50 <sup>th</sup> percentile)	122	119	119	106	99	104	107	107	108	111	115	124	127
95 <sup>th</sup> percentile	596	607	629	643	650	669	675	669	677	679	660	671	691
<b># of Cases in Age Interval</b>													
0 - 60 days (0 - 2 months)	835	802	863	1011	967	967	964	982	993	873	846	823	787
61-120 days (3 - 4 months)	499	569	549	512	610	640	638	639	629	705	678	592	620
121-180 days (5 - 6 months)	371	321	340	371	341	333	397	390	424	430	417	464	450
181-270 days (7 - 9 months)	346	368	358	319	306	327	293	314	319	363	374	404	398
> 270 days (> 9 months)	630	659	674	634	644	657	642	660	647	623	623	617	667
<b>DV Subset - Age (days)</b>													
Median (50 <sup>th</sup> percentile)	79	90	86	82	83	81	80	75	74	81	79	81	78
95 <sup>th</sup> percentile	557	588	577	593	598	624	580	587	579	584	615	645	604
<b># of Cases in Age Interval</b>													
0 - 60 days (0 - 2 months)	144	142	134	152	139	153	146	149	159	147	147	148	163
61-120 days (3 - 4 months)	66	71	83	67	74	72	71	84	79	93	91	75	88
121-180 days (5 - 6 months)	51	38	40	49	46	34	37	34	37	45	44	46	54
181-270 days (7 - 9 months)	33	42	45	31	27	37	38	31	23	26	23	30	33
> 270 days (> 9 months)	56	64	61	51	57	61	52	52	59	58	56	50	52
<b>Homicide</b>													
<b>Age (days)</b>													
Median (50 <sup>th</sup> percentile)	208	230	233	209	178	170	177	197	199	217	223	232	249
95 <sup>th</sup> percentile	878	909	687	732	762	784	814	845	876	906	937	976	1007
<b># of Cases in Age Interval</b>													
0 - 60 days (0 - 2 months)	8	11	9	9	10	10	8	9	14	12	10	13	7
61-120 days (3 - 4 months)	5	2	9	11	8	9	10	8	7	9	13	12	10
121-180 days (5 - 6 months)	7	5	2	3	9	8	9	8	9	6	7	9	12
181-270 days (7 - 9 months)	6	9	6	5	3	3	6	10	12	12	8	10	9
> 270 days (> 9 months)	20	20	20	21	22	21	20	21	22	24	30	31	34
<b>Sex Crime</b>													
<b>Age (days)</b>													
Median (50 <sup>th</sup> percentile)	163	174	143	140	145	130	148	149	149	152	170	182	176
95 <sup>th</sup> percentile	706	659	636	664	693	669	709	730	700	692	680	690	708
<b># of Cases in Age Interval</b>													
0 - 60 days (0 - 2 months)	61	64	74	67	57	74	64	60	73	58	42	43	46
61-120 days (3 - 4 months)	38	45	41	49	62	54	47	60	51	47	59	43	34
121-180 days (5 - 6 months)	30	18	32	39	30	39	50	47	44	50	38	38	46
181-270 days (7 - 9 months)	36	38	35	31	32	35	34	37	41	50	48	52	38
> 270 days (> 9 months)	74	78	83	74	78	79	77	82	73	72	64	72	83
<b>DV Subset - Age (days)</b>													
Median (50 <sup>th</sup> percentile)	237	284	209	159	190	211	234	168	197	193	118	148	172
95 <sup>th</sup> percentile	1119	1150	992	1210	1240	1271	1301	1332	1363	1393	1424	1454	938
<b># of Cases in Age Interval</b>													
0 - 60 days (0 - 2 months)	7	3	10	11	4	4	3	5	9	9	7	3	3
61-120 days (3 - 4 months)	3	8	6	2	8	9	3	3	1	5	9	7	7
121-180 days (5 - 6 months)	4	1	3	8	3	1	6	7	4	2	2	6	7
181-270 days (7 - 9 months)	5	4	4	3	4	6	5	3	5	7	4	3	2
> 270 days (> 9 months)	14	17	16	13	14	13	10	11	12	12	10	11	12
<b>Robbery</b>													
<b>Age (days)</b>													
Median (50 <sup>th</sup> percentile)	101	105	107	75	90	88	94	100	92	109	85	83	92
95 <sup>th</sup> percentile	601	580	609	618	634	542	572	603	537	542	476	459	474
<b># of Cases in Age Interval</b>													
0 - 60 days (0 - 2 months)	58	58	62	91	70	64	65	55	54	57	72	70	57
61-120 days (3 - 4 months)	39	47	32	44	47	52	49	41	43	39	33	42	58
121-180 days (5 - 6 months)	29	23	24	25	19	31	25	28	30	26	25	27	26
181-270 days (7 - 9 months)	15	17	24	16	21	21	17	20	18	23	25	27	23
> 270 days (> 9 months)	32	34	26	22	23	23	18	25	18	17	17	18	23

(\*) The highest crime category since filing is used to classify cases. For example, a case initially charged with homicide is reported as a homicide regardless of whether or not the charge is reduced since filing. On the other hand, if the charge for a case is upgraded later, then the reporting category in later reports will reflect the upgraded (higher) crime category.

Reflects all documents received by 01/15/2013.

- (1) "Controlled Substance - Non Drug Court" are drug related cases that have never been accepted into drug court.
- (2) "Controlled Substance - Drug Court" are drug related cases that have been formally accepted into drug court (identified by "Order of Participation").
- (3) DV Subset includes cases with a DV flag in at least one of the charges within the specific crime category at the time of the reporting.

Table 6 (cont.). Age of Pending Criminal Cases  
King County Superior Court

Crime Category (*)	Dec 2011	Jan 2012	Feb 2012	Mar 2012	Apr 2012	May 2012	Jun 2012	Jul 2012	Aug 2012	Sep 2012	Oct 2012	Nov 2012	Dec 2012
<b>Aggravated Assault</b>													
<b>Age (days)</b>													
Median (50 <sup>th</sup> percentile)	80	90	93	93	84	79	81	75	74	83	80	86	89
95 <sup>th</sup> percentile	471	477	496	488	512	543	523	510	480	487	507	495	524
<b># of Cases in Age Interval</b>													
0 - 60 days (0 - 2 months)	186	186	158	178	185	195	195	204	218	200	204	189	187
61-120 days (3 - 4 months)	98	105	119	100	97	88	100	110	126	145	135	116	128
121-180 days (5 - 6 months)	60	46	68	67	60	46	47	45	56	65	77	84	77
181-270 days (7 - 9 months)	51	62	51	48	41	45	44	39	37	38	37	42	51
> 270 days (> 9 months)	65	73	80	66	76	75	76	73	67	65	65	57	62
<b>DV Subset - Age (days)</b>													
<b>Age (days)</b>													
Median (50 <sup>th</sup> percentile)	67	92	78	68	63	71	68	68	67	74	69	74	70
95 <sup>th</sup> percentile	453	511	484	465	418	449	420	449	480	508	540	571	499
<b># of Cases in Age Interval</b>													
0 - 60 days (0 - 2 months)	109	107	89	113	113	111	101	105	116	105	106	105	116
61-120 days (3 - 4 months)	52	52	59	48	46	52	55	57	55	65	62	53	64
121-180 days (5 - 6 months)	32	24	31	31	32	23	22	20	24	31	30	29	36
181-270 days (7 - 9 months)	20	27	24	20	15	21	22	19	15	15	14	18	20
> 270 days (> 9 months)	27	31	33	25	30	32	27	25	28	27	28	23	26
<b>Burglary/Theft/Larceny</b>													
<b>Age (days)</b>													
Median (50 <sup>th</sup> percentile)	96	86	78	69	68	73	83	89	87	88	99	108	103
95 <sup>th</sup> percentile	465	471	472	458	440	452	468	498	481	476	506	500	512
<b># of Cases in Age Interval</b>													
0 - 60 days (0 - 2 months)	194	223	239	290	300	287	254	262	272	231	203	212	230
61-120 days (3 - 4 months)	107	117	131	131	155	198	206	180	162	191	193	156	145
121-180 days (5 - 6 months)	83	65	62	69	71	75	89	110	128	127	93	119	131
181-270 days (7 - 9 months)	65	73	66	61	46	50	47	50	55	68	94	107	97
> 270 days (> 9 months)	80	91	83	81	88	86	90	93	82	79	80	76	89
<b>DV Subset - Age (days)</b>													
<b>Age (days)</b>													
Median (50 <sup>th</sup> percentile)	103	60	77	83	50	52	57	50	46	69	66	59	69
95 <sup>th</sup> percentile	683	176	205	236	266	296	242	151	166	196	218	235	288
<b># of Cases in Age Interval</b>													
0 - 60 days (0 - 2 months)	5	10	8	8	10	10	11	13	10	10	10	11	11
61-120 days (3 - 4 months)	5	2	4	5	3	3	5	5	5	7	5	4	6
121-180 days (5 - 6 months)	6	8	3	2	2	1	0	3	4	3	3	2	3
181-270 days (7 - 9 months)	1	0	6	4	4	2	2	1	0	2	3	3	3
> 270 days (> 9 months)	1	1	0	0	0	1	0	0	0	1	0	0	2
<b>Motor Vehicle Theft</b>													
<b>Age (days)</b>													
Median (50 <sup>th</sup> percentile)	111	100	93	90	97	108	109	115	91	75	98	107	93
95 <sup>th</sup> percentile	427	458	441	472	483	479	509	533	571	594	625	655	568
<b># of Cases in Age Interval</b>													
0 - 60 days (0 - 2 months)	22	21	32	26	19	26	14	18	23	23	14	14	18
61-120 days (3 - 4 months)	12	12	11	16	24	11	15	16	4	6	11	11	9
121-180 days (5 - 6 months)	9	8	9	9	5	8	10	6	6	6	5	5	8
181-270 days (7 - 9 months)	9	8	8	9	11	10	5	7	6	3	4	6	7
> 270 days (> 9 months)	12	14	13	16	13	11	12	15	11	10	10	10	8

(\*) The highest crime category since filing is used to classify cases. For example, a case initially charged with homicide is reported as a homicide regardless of whether or not the charge is reduced since filing. On the other hand, if the charge for a case is upgraded later, then the reporting category in later reports will reflect the upgraded (higher) crime category.

Reflects all documents received by 01/15/2013.

- (1) "Controlled Substance - Non Drug Court" are drug related cases that have never been accepted into drug court.
- (2) "Controlled Substance - Drug Court" are drug related cases that have been formally accepted into drug court (identified by "Order of Participation").
- (3) DV Subset includes cases with a DV flag in at least one of the charges within the specific crime category at the time of the reporting.

Table 6 (cont.) . Age of Pending Criminal Cases  
King County Superior Court

Crime Category (*)	Dec 2011	Jan 2012	Feb 2012	Mar 2012	Apr 2012	May 2012	Jun 2012	Jul 2012	Aug 2012	Sep 2012	Oct 2012	Nov 2012	Dec 2012
<b>Controlled Substance - Non Drug Court<sup>(1)</sup></b>													
<b>Age (days)</b>	87	100	105	70	77	87	82	77	85	83	101	106	104
Median (50 <sup>th</sup> percentile)	555	590	589	528	558	589	514	485	548	546	577	667	771
95 <sup>th</sup> percentile													
<b># of Cases in Age Interval</b>	151	114	148	211	194	164	205	236	195	153	153	142	101
0 - 60 days (0 - 2 months)	101	115	100	79	114	130	125	115	127	154	129	108	132
61-120 days (3 - 4 months)	64	64	66	64	57	51	82	72	74	62	71	86	72
121-180 days (5 - 6 months)	39	38	56	54	45	48	34	40	48	53	50	47	52
181-270 days (7 - 9 months)	62	66	65	58	60	64	68	67	72	61	65	68	68
> 270 days (> 9 months)													
<b>Drug Court<sup>(2)</sup></b>													
<b>Age (days)</b>													
Median (50 <sup>th</sup> percentile)	397	401	421	431	446	441	437	442	448	411	393	389	414
95 <sup>th</sup> percentile	1095	931	1010	926	897	912	942	973	978	991	999	935	966
<b># of Cases in Age Interval</b>													
0 - 60 days (0 - 2 months)	4	0	0	0	0	1	2	0	0	1	0	0	0
61-120 days (3 - 4 months)	6	6	4	2	2	0	7	8	7	9	2	4	2
121-180 days (5 - 6 months)	19	15	8	12	12	10	12	10	18	22	23	20	11
181-270 days (7 - 9 months)	43	38	33	27	30	31	31	29	26	44	48	54	54
> 270 days (> 9 months)	201	196	208	201	199	210	200	200	203	198	198	192	209
<b>Other</b>													
<b>Age (days)</b>													
Median (50 <sup>th</sup> percentile)	101	107	112	117	112	108	107	104	110	107	102	104	97
95 <sup>th</sup> percentile	502	533	562	592	543	569	559	590	621	578	630	660	693
<b># of Cases in Age Interval</b>													
0 - 60 days (0 - 2 months)	130	100	106	118	111	117	121	109	113	109	113	109	114
61-120 days (3 - 4 months)	68	97	82	55	66	69	60	74	68	76	74	71	72
121-180 days (5 - 6 months)	42	48	45	60	56	37	38	38	38	41	44	47	39
181-270 days (7 - 9 months)	46	51	46	37	42	56	51	50	39	39	31	29	32
> 270 days (> 9 months)	62	66	71	73	62	64	59	64	81	79	73	72	69
<b>DV Subset - Age (days)</b>													
Median (50 <sup>th</sup> percentile)	71	48	70	71	89	52	49	63	76	81	83	86	49
95 <sup>th</sup> percentile	544	352	562	635	665	654	430	461	492	420	451	481	512
<b># of Cases in Age Interval</b>													
0 - 60 days (0 - 2 months)	18	17	21	15	10	23	28	25	21	19	18	20	27
61-120 days (3 - 4 months)	3	7	11	8	12	7	6	16	16	14	3	9	7
121-180 days (5 - 6 months)	5	2	2	6	7	4	7	3	4	7	8	8	6
181-270 days (7 - 9 months)	7	9	6	1	1	5	5	7	3	2	1	3	5
> 270 days (> 9 months)	5	6	5	6	5	5	4	4	8	6	7	7	5
<b>Criminal RALJ</b>													
<b>Age (days)</b>													
Median (50 <sup>th</sup> percentile)	162	160	155	141	152	143	144	154	135	139	136	144	147
95 <sup>th</sup> percentile	334	365	328	424	449	480	510	425	355	371	357	385	400
<b># of Cases in Age Interval</b>													
0 - 60 days (0 - 2 months)	21	25	35	31	21	29	36	29	31	29	35	31	27
61-120 days (3 - 4 months)	25	23	20	25	35	26	19	27	34	29	29	29	30
121-180 days (5 - 6 months)	28	29	24	23	20	28	35	26	21	25	34	29	28
181-270 days (7 - 9 months)	36	34	33	31	33	28	24	32	37	33	29	30	35
> 270 days (> 9 months)	22	21	25	22	23	24	22	20	18	18	21	21	22

(\*) The highest crime category since filing is used to classify cases. For example, a case initially charged with homicide is reported as a homicide regardless of whether or not the charge is reduced since filing. On the other hand, if the charge for a case is upgraded later, then the reporting category in later reports will reflect the upgraded (higher) crime category.

Reflects all documents received by 01/15/2013.

- (1) "Controlled Substance - Non Drug Court" are drug related cases that have never been accepted into drug court.
- (2) "Controlled Substance - Drug Court" are drug related cases that have been formally accepted into drug court (identified by "Order of Participation").
- (3) DV Subset includes cases with a DV flag in at least one of the charges within the specific crime category at the time of the reporting.



Table 7. Comparison between SEA/KNT: Filings, Resolutions, and Pending Caseload  
King County Superior Court

	Jan 2012	Feb 2012	Mar 2012	Apr 2012	May 2012	Jun 2012	Jul 2012	Aug 2012	Sep 2012	Oct 2012	Nov 2012	Dec 2012 <sup>(1)</sup>
<b>Total Filings</b>												
SEA - # of Cases Filed	261	308	377	306	326	331	314	299	269	279	219	237
KNT - # of Cases Filed	184	214	241	206	250	213	241	244	189	228	191	206
SEA %	59%	59%	61%	60%	57%	61%	57%	55%	59%	55%	53%	54%
KNT %	41%	41%	39%	40%	43%	39%	43%	45%	41%	45%	47%	46%
<b>Total Resolutions</b>												
SEA - # of Cases Resolved	214	242	275	286	280	271	284	270	233	327	263	260
KNT - # of Cases Resolved	152	194	224	200	211	228	185	206	188	209	184	184
SEA - Drug Court Cases Resolved	14	6	19	10	8	13	12	13	13	15	8	2
KNT - Drug Court Cases Resolved	8	5	2	6	2	9	2	3	4	7	15	0
SEA %	55%	54%	53%	57%	56%	52%	59%	55%	53%	59%	56%	59%
KNT %	39%	43%	43%	40%	42%	43%	38%	42%	43%	37%	39%	41%
SEA - Drug Court %	4%	1%	4%	2%	2%	2%	2%	3%	3%	3%	2%	0%
KNT - Drug Court %	2%	1%	0%	1%	0%	2%	0%	1%	1%	1%	3%	0%
<b>Total Pending</b>												
SEA - # of Cases Pending	1214	1270	1352	1370	1390	1422	1444	1472	1464	1415	1387	1371
KNT - # of Cases Pending	1260	1261	1253	1255	1279	1260	1294	1286	1256	1252	1243	1275
SEA - Drug Court Cases Pending	165	167	156	157	164	163	157	156	163	154	165	
KNT - Drug Court Cases Pending	90	86	86	86	91	89	90	98	111	117	105	
SEA %	45%	46%	47%	48%	48%	48%	48%	49%	49%	48%	48%	47%
KNT %	46%	45%	44%	44%	44%	43%	43%	43%	42%	43%	43%	44%
SEA - Drug Court %	6%	6%	5%	5%	6%	6%	5%	5%	5%	5%	6%	6%
KNT - Drug Court %	3%	3%	3%	3%	3%	3%	3%	3%	4%	4%	4%	4%

(1) Reflects all documents received by **01/15/2013**.

(2) The number of judges does not include RJC chief judge and the criminal chief judge at SEA.

Table 8. Drug Court Statistics  
King County Superior Court

Categories	Nov 2011	Dec 2011	Jan 2012	Feb 2012	Mar 2012	Apr 2012	May 2012	Jun 2012	Jul 2012	Aug 2012	Sep 2012	Oct 2012	Nov 2012	Dec 2012
Referrals - Total	37	33	34	60	76	41	43	91	42	50	36	38	25	17
Directly from PA	34	11	15	46	49	22	34	63	26	28	22	18	12	10
From Mainstream	3	21	19	14	17	19	9	28	16	22	14	20	13	7
Arraignments in Drug Court <sup>(1)</sup>	26	10	10	24	40	30	25	37	36	25	15	35	12	7
GP in Drug Court <sup>(2)</sup>	2	5	2	4	2	2	5	5	5	11	5	14	5	4
Return to mainstream <sup>(3)</sup>	18	10	8	14	17	16	4	8	13	17	27	24	20	19
Opt-in <sup>(4)</sup>	15	13	23	5	15	13	23	20	15	24	42	25	25	13
Graduations <sup>(5)</sup>	20	1	18	7	16	12	8	18	7	12	15	15	15	0
Terminations <sup>(6)</sup>	7	5	4	4	5	4	2	4	7	4	2	7	8	2

- (1) Arraignments held in drug court regardless opt-in status of the cases.
- (2) Guilty pleas entered in drug court before opt-in.
- (3) Referred to drug court but decision by court order to go to mainstream.
- (4) Opt-in reflects the court order of participation.
- (5) Graduations are dismissals of opted-in cases after the completion of program.
- (6) Terminations are cases that fail in drug court.