

King County Superior Court
Criminal Department Statistical Report

February 2013

Department of Judicial Administration
Prepared by: Shiquan Liao, Ph.D., Statistician

Release date: March 20, 2013

Report #: CRM-2013-02

Terminology

Age of Pending Case

Time (days) from filing to resolution, less suspense time if applicable.

Age of Resolved Case

Time (days) from filing to resolution, less suspense time if applicable.

End Pending

Number of pending cases at the end of reporting period.

Net Change in Pending

The change in number of pending cases (end pending minus previous pending).

Pending Case

A case is defined as pending if it is unresolved and not on suspense status.

Previous Pending

Number of pending cases at the beginning of reporting period.

Reactivated Case

A case returns to active from suspense status during the reporting period.

Resolution

A case is resolved if all issues in the complaint are fully adjudicated. However, a drug court case is reported as resolved only when dispositive document is also filed (completed).

Resolution Category

Five resolution categories are used to report resolution of criminal cases: jury trial (CVJV, AQJV), non-jury trial (CVCT, AQCT), guilty plea (GP, GPAT, GPJT), dismissal (DSM), and other (all other resolution codes). For criminal RALJ cases, the resolution categories are: RALJ decision (CDTA, CDTM, CDTR), dismissal (DSRM), and others (any other resolution codes).

Suspended Case

A case is placed in suspense status (removing from active) during the reporting period.

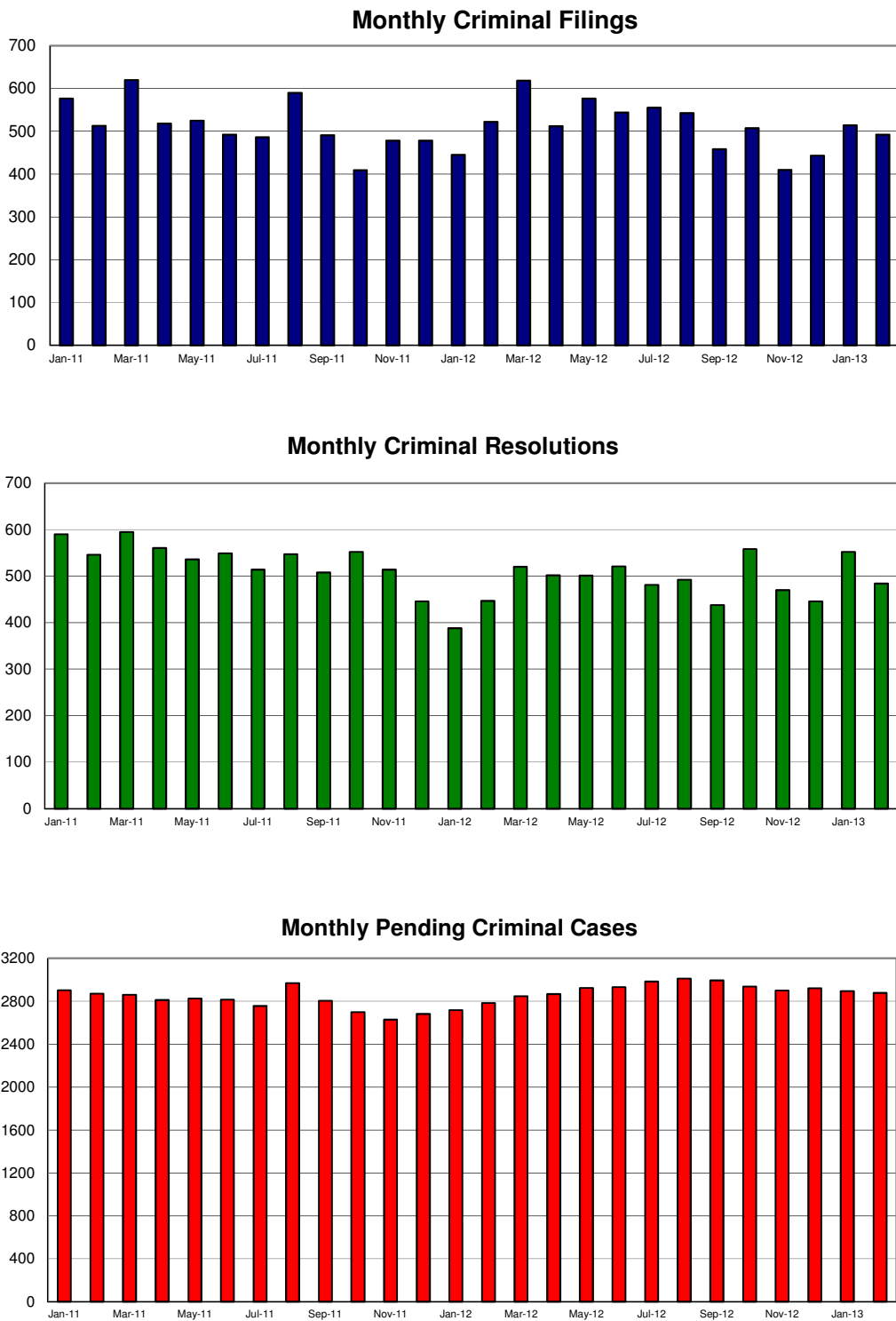
Suspense Status

A case is said to be on suspense status if it is on warrant or appeal.

Suspense Time

Time (days) a case is on suspense status.

Figure 1. Number of Criminal Filings, Resolutions and Pending Caseload by Month



Note: Starting January 2010, RALJ cases are included.

Figure 2. Crime Category as a Percentage of Total Filings by Year

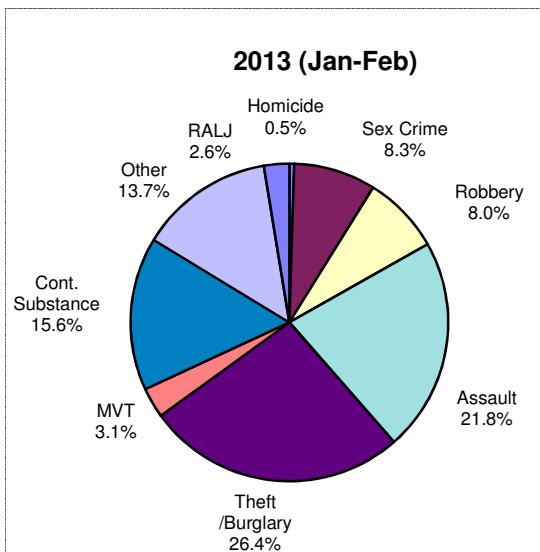
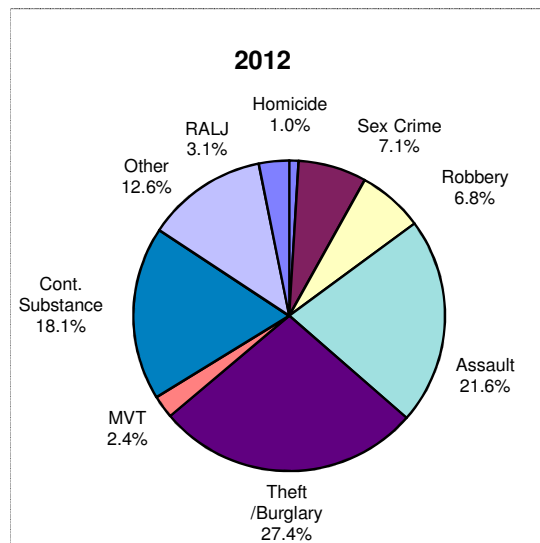
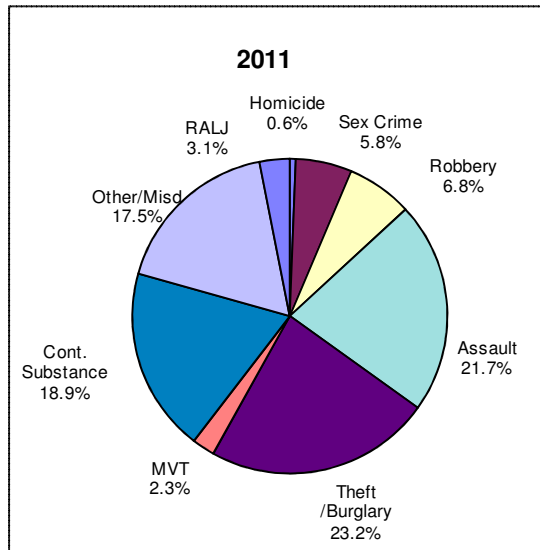


Table 1. Monthly Criminal New Filings by Crime Category ^(*)
King County Superior Court

	Jan	Feb	Mar	Apr	May	Jun	Jul	Aug	Sep	Oct	Nov	Dec	ADJ ⁽¹⁾	Annual
Total														
2010	515	554	610	512	587	666	574	563	532	608	535	611	(0)	6867
2011	576	513	620	518	525	492	486	590	491	409	478	478	(+2)	6178
2012	445	522	618	512	576	544	555	543	458	507	410	443	(+2)	6135
2013 ⁽²⁾	514	492												
Homicide														
2010	4	3	5	5	2	3	2	1	4	9	2	2	(0)	42
2011	3	3	2	1	3	5	3	4	2	3	2	7	(0)	38
2012	4	2	7	4	7	2	7	7	7	3	6	4	(+2)	62
2013 ⁽²⁾	3	2												
Sex Crime														
2010	31	32	27	24	36	37	39	39	28	19	21	28	(+3)	364
2011	34	32	22	36	23	28	23	30	22	28	26	52	(0)	356
2012	34	49	34	60	40	22	38	47	33	20	30	27	(+1)	435
2013 ⁽²⁾	45	39												
Robbery														
2010	54	43	58	42	34	39	32	35	37	33	23	48	(0)	478
2011	50	27	58	29	25	35	23	36	30	34	36	35	(0)	418
2012	33	38	57	19	50	32	17	32	36	47	24	33	(+1)	419
2013 ⁽²⁾	44	36												
Aggravated Assault														
2010	107	122	125	117	119	138	139	133	136	132	115	137	(+26)	1546
2011	105	84	139	105	108	126	126	117	118	98	101	116	(0)	1343
2012	91	95	110	104	118	121	115	123	114	124	106	101	(+14)	1336
2013 ⁽²⁾	103	116												
Burglary/Theft /Larceny														
2010	125	149	141	125	126	137	125	137	134	147	115	153	(+12)	1626
2011	147	124	141	114	141	100	119	140	107	86	92	122	(1)	1434
2012	141	134	178	160	156	121	175	144	119	114	106	133	(+13)	1694
2013 ⁽²⁾	139	127												
Motor Vehicle Theft														
2010	9	8	12	10	10	17	13	13	17	21	13	18	(0)	161
2011	14	20	12	9	5	9	12	18	12	10	13	11	(0)	145
2012	18	19	15	5	13	7	10	19	11	10	7	12	(-6)	140
2013 ⁽²⁾	17	14												
Controlled Substance														
2010	80	86	127	98	154	188	124	91	74	115	130	115	(-2)	1380
2011	120	108	107	99	104	97	65	120	100	82	99	67	(1)	1169
2012	57	102	147	88	93	152	116	85	75	90	53	51	(-1)	1108
2013 ⁽²⁾	88	69												
Other														
2010	94	96	100	76	87	92	93	96	88	115	101	96	(-40)	1094
2011	83	97	123	110	97	71	99	108	84	57	99	56	(0)	1084
2012	51	64	58	61	80	70	65	65	53	74	64	66	(-22)	749
2013 ⁽²⁾	61	77												
Criminal RALJ														
2010	11	15	15	15	19	15	7	18	14	17	15	14	(0)	176
2011	20	18	16	15	19	21	16	17	16	11	10	12	(0)	191
2012	16	19	12	11	19	17	12	21	10	25	14	16	(0)	192
2013 ⁽²⁾	14	12												
KNT Filing as % of Total														
2010	36%	40%	40%	39%	36%	38%	40%	36%	43%	39%	34%	41%		38%
2011	40%	42%	46%	43%	44%	45%	44%	41%	43%	47%	41%	47%		44%
2012	41%	41%	39%	40%	43%	39%	43%	45%	41%	45%	47%	47%		42%
2013 ⁽²⁾	43%	46%												

(*) The highest crime category in a case's history is used to classify cases. For example, a case charged with homicide at any time in the case's history is reported as a homicide regardless of whether the charge is reduced at resolution.

(1) "ADJ" = year-end adjustment.

(2) Reflects all documents received by 03/15/2013.

Table 2. Monthly Criminal Case Resolutions by Crime Category
King County Superior Court

	Jan	Feb	Mar	Apr	May	Jun	Jul	Aug	Sep	Oct	Nov	Dec	ADJ ⁽¹⁾	Annual
Total														
2010	535	528	582	587	554	556	597	601	570	599	454	510	(+70)	6743
2011	590	546	595	560	536	549	514	547	508	552	514	446	(+16)	6463
2012	388	447	520	502	501	521	481	492	438	558	470	446	(+18)	5782
2013 ⁽²⁾	552	484												
Homicide														
2010	6	4	2	4	6	7	1	7	3	7	7	3	(0)	57
2011	5	6	3	5	4	3	2	5	3	8	4	1	(0)	49
2012	1	5	2	6	3	5	4	1	5	2	2	5	(0)	41
2013 ⁽²⁾	3	3												
Sex Crime														
2010	27	30	25	20	32	32	32	22	34	22	27	26	(+4)	333
2011	30	42	21	21	18	19	31	30	36	31	24	41	(+2)	346
2012	37	27	37	39	33	38	33	47	31	56	28	25	(+4)	435
2013 ⁽²⁾	34	39												
Robbery														
2010	27	39	35	58	55	25	55	43	36	42	38	27	(+3)	483
2011	39	38	45	39	33	40	34	31	31	29	34	36	(-1)	428
2012	31	42	34	38	32	52	33	37	29	33	27	25	(0)	413
2013 ⁽²⁾	42	30												
Aggravated Assault														
2010	101	112	140	127	98	112	127	138	137	154	95	122	(+22)	1485
2011	117	123	131	121	117	100	107	119	129	133	127	98	(+2)	1424
2012	74	96	137	111	126	99	108	85	94	123	128	107	(+3)	1291
2013 ⁽²⁾	102	109												
Burglary/Theft /Larceny														
2010	115	107	137	140	123	124	114	151	112	115	92	109	(+17)	1456
2011	122	120	128	129	150	135	112	131	106	151	125	105	(+1)	1515
2012	81	116	112	132	124	134	133	141	100	132	103	115	(+3)	1426
2013 ⁽²⁾	148	135												
Motor Vehicle Theft														
2010	12	12	20	13	7	7	9	13	13	19	6	14	(0)	145
2011	16	10	14	13	12	7	13	9	10	10	9	10	(0)	133
2012	12	8	13	14	20	7	7	17	11	11	9	8	(+1)	138
2013 ⁽²⁾	15	7												
Controlled Substance - Non Drug Court														
2010	103	104	102	96	87	103	108	105	97	88	87	92	(+14)	1186
2011	101	82	111	97	77	102	89	113	78	81	78	74	(+8)	1088
2012	69	67	79	76	81	71	81	79	82	93	57	78	(+11)	916
2013 ⁽²⁾	104	61												
Drug Court														
2010	43	14	24	30	34	36	34	23	18	24	15	5	(+2)	302
2011	29	20	21	21	9	16	23	13	15	15	27	6	(0)	218
2012	22	11	21	16	10	22	14	16	17	22	23	2	(0)	204
2013 ⁽²⁾	21	21												
Other														
2010	85	82	83	87	101	86	99	84	97	98	78	90	(+8)	1078
2011	111	91	105	100	104	107	88	81	83	80	72	57	(-4)	1075
2012 ⁽²⁾	45	62	68	60	53	76	54	55	51	73	69	67	(-1)	732
2013 ⁽²⁾	70	66												
Criminal RALJ														
2010	16	24	14	12	11	24	18	15	23	30	9	22	(0)	218
2011	20	14	16	14	12	20	15	15	17	14	14	18	(-2)	187
2012	16	13	17	10	19	17	14	14	18	13	24	14	(-3)	186
2013 ⁽²⁾	13	13												
KNT Filing as % of Total														
2010	41%	44%	38%	36%	38%	39%	37%	37%	35%	37%	36%	37%		37%
2011	38%	34%	37%	40%	40%	33%	34%	40%	42%	40%	41%	38%		38%
2012	41%	45%	44%	41%	43%	46%	39%	43%	44%	39%	42%	41%		42%
2013 ⁽²⁾	44%	40%												

The highest crime category in a case's history is used to classify cases. For example, a case charged with homicide at any time in the case's history is reported as a homicide regardless of whether the charge is reduced at resolution.

- (1) "ADJ" = year-end adjustment.
- (2) Reflects all documents received by 03/15/2013.
- (3) "Controlled Substance - Non Drug Court" are drug related cases that have never been accepted into drug court.
- (4) "Controlled Substance - Drug Court" are drug related cases that have been formally accepted into drug court (identified by "Order of Participation").

Table 3. Number of Cases Resolved and Resolution Category
King County Superior Court

Crime Category (*)	Mar 2012	Apr 2012	May 2012	Jun 2012	Jul 2012	Aug 2012	Sep 2012	Oct 2012	Nov 2012	Dec 2012	Jan 2013	Feb 2013
Homicide	2	6	3	5	4	1	5	2	2	10	3	3
Resolved by Jury Trial	0	1	0	0	0	0	1	0	0	5	2	0
Resolved by Non-Jury Trial	0	0	0	0	0	0	0	0	0	2	0	0
Resolved by Guilty Plea	2	4	2	4	4	1	4	2	2	1	1	2
Dismissal	0	1	1	1	0	0	0	0	0	2	0	1
Others	0	0	0	0	0	0	0	0	0	0	0	0
Sex Crime	37	39	33	38	33	47	31	56	28	25	34	39
Resolved by Jury Trial	5	2	1	5	1	2	3	4	0	1	2	3
Resolved by Non-Jury Trial	0	0	0	0	0	2	0	0	0	0	0	0
Resolved by Guilty Plea	26	36	27	26	29	36	25	44	27	21	26	32
Dismissal	6	1	5	7	9	7	3	8	1	3	6	4
Others	0	0	0	0	0	0	0	0	0	0	0	0
Robbery	34	38	32	52	33	37	29	33	27	25	42	30
Resolved by Jury Trial	1	2	1	4	3	5	2	1	3	0	1	0
Resolved by Non-Jury Trial	0	0	0	0	0	0	0	1	0	0	0	0
Resolved by Guilty Plea	29	34	25	46	25	30	23	27	21	21	38	25
Dismissal	3	2	6	2	5	2	4	4	3	4	3	5
Others	1	0	0	0	0	0	0	0	0	0	0	0
Aggravated Assault	137	111	126	99	108	85	94	123	128	107	102	109
Resolved by Jury Trial	11	6	3	4	7	4	0	5	7	6	6	7
Resolved by Non-Jury Trial	0	0	0	1	0	0	0	0	2	0	0	1
Resolved by Guilty Plea	108	90	111	87	84	69	85	105	108	92	81	86
Dismissal	18	15	12	7	16	12	9	13	10	9	14	15
Others	0	0	0	0	1	0	0	0	1	0	1	0
Burglary/Theft/Larceny	112	132	124	134	133	141	100	132	103	115	148	135
Resolved by Jury Trial	1	2	5	2	3	2	1	2	2	2	4	4
Resolved by Non-Jury Trial	0	0	0	0	0	0	0	1	0	1	0	1
Resolved by Guilty Plea	93	109	106	115	118	119	88	120	89	106	132	116
Dismissal	18	21	13	17	12	20	11	9	12	6	12	14
Others	0	0	0	0	0	0	0	0	0	0	0	0
Motor Vehicle Theft	13	14	20	7	7	17	11	11	9	8	15	7
Resolved by Jury Trial	0	0	0	1	0	0	1	0	0	0	0	0
Resolved by Non-Jury Trial	0	0	0	0	0	0	0	0	0	0	0	0
Resolved by Guilty Plea	12	13	14	6	6	14	8	11	8	8	10	7
Dismissal	1	1	6	0	1	3	2	0	1	0	5	0
Others	0	0	0	0	0	0	0	0	0	0	0	0
Controlled Substance - Non Drug Court⁽¹⁾	79	76	81	71	81	79	82	93	57	78	104	61
Resolved by Jury Trial	3	1	0	2	0	1	1	2	0	0	0	1
Resolved by Non-Jury Trial	1	0	0	1	0	0	0	0	0	0	2	0
Resolved by Guilty Plea	64	65	63	60	64	69	69	82	50	65	85	55
Dismissal	11	10	18	8	17	9	12	9	7	13	17	5
Others	0	0	0	0	0	0	0	0	0	0	0	0
Drug Court⁽²⁾	21	16	10	22	14	16	17	22	23	2	21	21
Resolved by Non-Jury Trial	5	1	1	4	4	2	1	1	4	1	4	9
Resolved by Guilty Plea	0	3	1	0	3	2	1	6	4	1	5	3
Dismissal	16	12	8	18	7	12	15	15	15	0	12	9
Others	0	0	0	0	0	0	0	0	0	0	0	0
Other	68	60	53	76	54	55	51	73	69	67	70	66
Resolved by Jury Trial	5	3	1	5	2	0	2	3	2	2	5	3
Resolved by Non-Jury Trial	0	0	0	1	0	0	0	1	1	1	1	0
Resolved by Guilty Plea	48	47	40	47	38	44	33	54	49	46	49	46
Dismissal	14	10	11	22	12	11	14	13	16	17	12	17
Others	1	0	1	1	2	0	2	1	1	1	3	0
Criminal RALJ	17	10	19	17	14	14	18	13	24	14	13	13
RALJ Decision	14	8	12	15	8	11	7	12	6	6	9	7
Dismissal	3	2	6	2	5	3	8	1	10	4	3	6
Others	0	0	1	0	1	0	3	0	6	4	1	0

(*) The highest crime category in a case's history is used to classify cases.

Reflects all documents received by **03/15/2013**.

(1) "Controlled Substance - Non Drug Court" are drug related cases that have never been accepted into drug court.

(2) "Controlled Substance - Drug Court" are drug related cases that have been formally accepted into drug court (identified by "Order of Participation").

(3) DV Subset includes cases with a DV flag in at least one of the charges within the specific crime category at the time of the reporting.

Table 4. Age (days) of Resolved Cases
King County Superior Court

Crime Category ^(*)	Mar 2012	Apr 2012	May 2012	Jun 2012	Jul 2012	Aug 2012	Sep 2012	Oct 2012	Nov 2012	Dec 2012	Jan 2013	Feb 2013
Homicide ^(**)												
50% Cases Resolved by Day	321	813	764	469	561	283	203	261	667	357	525	566
90% Cases Resolved by Day	347	916	877	1638	1189	283	559	462	678	972	621	703
Average Time (days)	321	644	597	586	630	283	278	261	667	397	436	469
Sex Crime												
50% Cases Resolved by Day	266	146	134	117	182	196	212	204	93	201	182	166
90% Cases Resolved by Day	811	426	414	403	354	549	765	528	287	701	450	443
Average Time (days)	338	186	183	215	188	256	302	251	170	308	222	210
Robbery												
50% Cases Resolved by Day	138	92	111	137	104	160	110	117	109	146	129	126
90% Cases Resolved by Day	382	276	292	352	218	440	342	326	254	266	243	311
Average Time (days)	178	145	156	188	126	198	175	181	140	165	159	156
Aggravated Assault												
50% Cases Resolved by Day	95	96	93	84	95	85	81	92	102	88	94	110
90% Cases Resolved by Day	353	273	225	279	295	292	267	242	300	182	223	303
Average Time (days)	140	137	116	134	130	130	133	116	130	101	118	146
Burglary/Theft/Larceny												
50% Cases Resolved by Day	99	91	83	99	110	120	102	100	111	111	115	132
90% Cases Resolved by Day	277	344	276	237	232	371	295	224	247	237	277	298
Average Time (days)	130	142	120	128	129	154	140	130	127	136	142	152
Motor Vehicle Theft												
50% Cases Resolved by Day	125	120	97	119	70	95	73	67	86	73	61	97
90% Cases Resolved by Day	277	442	241	541	157	511	224	174	256	139	254	247
Average Time (days)	138	216	109	194	80	144	151	112	99	74	115	98
Controlled Substance												
50% Cases Resolved by Day	112	108	88	98	83	77	104	109	116	137	128	130
90% Cases Resolved by Day	344	280	206	237	194	188	280	234	217	263	307	302
Average Time (days)	141	132	115	125	104	98	139	129	141	152	151	149
Drug Court ⁽²⁾												
50% Cases Resolved by Day	643	499	642	497	623	609	509	578	588	325	525	506
90% Cases Resolved by Day	1165	1320	928	840	834	873	697	977	983	437	912	961
Average Time (days)	724	650	655	562	615	624	511	651	673	325	573	581
Other												
50% Cases Resolved by Day	92	83	78	91	89	77	76	127	113	100	97	84
90% Cases Resolved by Day	350	420	229	362	240	233	195	325	308	254	315	267
Average Time (days)	133	179	115	143	173	104	113	144	131	123	138	153
Criminal RALJ												
50% Cases Resolved by Day	276	262	260	296	254	290	231	292	234	241	247	259
90% Cases Resolved by Day	343	414	417	477	542	620	603	382	517	343	435	325
Average Time (days)	271	279	254	320	297	360	293	301	217	280	257	276

(*) The highest crime category in a case's history is used to classify cases. For example, a case charged with homicide at any time during the case's history is reported as a homicide regardless of whether the charge is reduced at resolution.

(**) Due to small number of resolutions in this category, the age statistics for homicides are expected to vary considerably.

Reflects all documents received by 03/15/2013.

(1) "Controlled Substance - Non Drug Court" are drug related cases that have never been accepted into drug court.

(2) "Controlled Substance - Drug Court" are drug related cases that have been formally accepted into drug court (identified by "Order of Participation").

(3) DV Subset includes cases with a DV flag in at least one of the charges within the specific crime category at the time of the reporting.

Table 5. Pending Criminal Cases
King County Superior Court

Crime Category (*)	Feb 2012	Mar 2012	Apr 2012	May 2012	Jun 2012	Jul 2012	Aug 2012	Sep 2012	Oct 2012	Nov 2012	Dec 2012	Jan 2013	Feb 2013
Total													
Previous Pending	2719	2784	2847	2868	2924	2934	2985	3012	2994	2938	2900	2922	2895
New Filing (+)	522	618	512	576	544	555	543	458	507	410	443	514	492
Resolved (-)	447	520	502	501	521	481	492	438	558	470	446	552	484
End Pending	2784	2847	2868	2924	2934	2985	3012	2994	2938	2900	2922	2895	2877
Homicide													
Previous Pending	47	46	49	52	51	53	56	64	63	68	75	72	76
New Filing (+)	2	7	4	7	2	7	7	7	3	6	4	3	2
Resolved (-)	5	2	6	3	5	4	1	5	2	2	5	3	3
End Pending	46	49	52	51	53	56	64	63	68	75	72	76	74
Sex Crime													
Previous Pending	243	265	260	259	281	272	286	282	277	251	248	247	251
New Filing (+)	49	34	60	40	22	38	47	33	20	30	27	45	39
Resolved (-)	27	37	39	33	38	33	47	31	56	28	25	34	39
End Pending	265	260	259	281	272	286	282	277	251	248	247	251	252
Robbery													
Previous Pending	179	168	188	180	191	174	169	163	162	172	184	187	186
New Filing (+)	38	57	19	50	32	17	32	36	47	24	33	44	36
Resolved (-)	42	34	38	32	52	33	37	29	33	27	25	42	30
End Pending	168	188	180	191	174	169	163	162	172	184	187	186	183
Aggravated Assault													
Previous Pending	472	476	459	459	449	462	471	504	513	518	488	505	510
New Filing (+)	95	110	104	118	121	115	123	114	124	106	101	103	116
Resolved (-)	96	137	111	126	99	108	85	94	123	128	107	102	109
End Pending	476	459	459	449	462	471	504	513	518	488	505	510	510
Burglary/Theft/Larceny													
Previous Pending	569	581	632	662	696	666	695	699	696	663	670	692	677
New Filing (+)	134	178	160	156	121	175	144	119	114	106	133	139	127
Resolved (-)	116	112	132	124	134	133	141	100	132	103	115	148	135
End Pending	581	632	662	696	666	695	699	696	663	670	692	677	669
Motor Vehicle Theft													
Previous Pending	63	73	76	72	66	56	62	50	48	44	46	50	53
New Filing (+)	19	15	5	13	7	10	19	11	10	7	12	17	14
Resolved (-)	9	13	14	20	7	7	16	11	11	9	8	15	7
End Pending	73	76	72	66	56	62	50	48	44	46	50	53	58
Controlled Substance - Non Drug Court (1)													
Previous Pending	397	435	466	470	457	514	530	516	483	468	451	425	380
Resolved (-)	67	79	76	81	71	81	79	82	93	57	78	104	61
End Pending	435	466	470	457	514	530	516	483	468	451	425	380	374
Drug Court (2)													
Previous Pending	255	253	242	243	255	252	247	254	274	271	270	276	289
New Filing (+)	5	15	14	23	20	15	24	42	25	25	13	30	11
Resolved (-)	11	21	16	10	22	14	16	17	22	23	2	21	21
End Pending	253	242	243	255	252	247	254	274	271	270	276	289	277
Other													
Previous Pending	362	350	343	339	343	329	335	339	344	335	328	326	330
New Filing (+)	64	58	61	80	70	65	65	53	74	64	66	61	77
Resolved (-)	62	68	60	53	76	54	55	51	73	69	67	70	66
End Pending	350	343	339	343	329	335	339	344	335	328	326	330	338
Criminal RALJ													
Previous Pending	132	137	132	132	135	136	134	141	134	148	140	142	143
New Filing (+)	19	12	11	19	17	12	21	10	25	14	16	14	12
Resolved (-)	13	17	10	19	17	14	14	18	13	24	14	13	13
End Pending	137	132	132	135	136	134	141	134	148	140	142	143	142
Total Pending Caseload													
SEA (%)	52%	53%	53%	53%	54%	54%	54%	54%	53%	54%	52%	53%	52%
KNT (%)	48%	47%	47%	47%	46%	46%	46%	46%	47%	46%	48%	47%	48%

(*) Information from filing to the reporting time is used to determine crime category for pending cases. The category for a case in this table is the highest crime category since filing. For example, a case initially charged with homicide is reported as a homicide regardless of whether or not the charge is reduced since filing. On the other hand, if the charge for a case is upgraded later, then the reporting category in later reports will reflect the upgraded (higher) crime category.

Reflects all documents received by 03/15/2013. Drug court cases are identified by docket code "ORPAR" (Order for Participation).

Table 6. Age of Pending Criminal Cases
King County Superior Court

Crime Category (*)	Feb 2012	Mar 2012	Apr 2012	May 2012	Jun 2012	Jul 2012	Aug 2012	Sep 2012	Oct 2012	Nov 2012	Dec 2012	Jan 2013	Feb 2013
Total													
Age (days)													
Median (50 th percentile)	119	106	99	104	107	107	108	111	115	124	127	123	123
95 th percentile	629	643	650	669	675	669	677	679	660	671	691	701	681
# of Cases in Age Interval													
0 - 60 days (0 - 2 months)	863	1011	967	967	964	982	993	873	846	823	787	877	854
61-120 days (3 - 4 months)	549	512	610	640	638	639	629	705	678	592	620	548	569
121-180 days (5 - 6 months)	340	371	341	333	397	390	424	430	417	464	450	379	372
181-270 days (7 - 9 months)	358	319	306	327	293	314	319	363	374	404	398	412	400
> 270 days (> 9 months)	674	634	644	657	642	660	647	623	623	617	667	679	682
Homicide													
Age (days)													
Median (50 th percentile)	233	209	178	170	177	197	199	217	223	232	249	253	265
95 th percentile	687	732	762	784	814	845	876	906	937	976	1007	1038	843
# of Cases in Age Interval													
0 - 60 days (0 - 2 months)	9	9	10	10	8	9	14	12	10	13	7	5	8
61-120 days (3 - 4 months)	9	11	8	9	10	8	7	9	13	12	10	6	6
121-180 days (5 - 6 months)	2	3	9	8	9	8	9	6	7	9	12	15	10
181-270 days (7 - 9 months)	6	5	3	3	6	10	12	12	8	10	9	12	15
> 270 days (> 9 months)	20	21	22	21	20	21	22	24	30	31	34	36	35
Sex Crime													
Age (days)													
Median (50 th percentile)	143	140	145	130	148	149	149	152	170	182	176	172	171
95 th percentile	636	664	693	669	709	730	700	692	680	690	708	729	736
# of Cases in Age Interval													
0 - 60 days (0 - 2 months)	74	67	57	74	64	60	73	58	42	43	46	57	62
61-120 days (3 - 4 months)	41	49	62	54	47	60	51	47	59	43	34	35	39
121-180 days (5 - 6 months)	32	39	30	39	50	47	44	50	38	38	46	36	29
181-270 days (7 - 9 months)	35	31	32	35	34	37	41	50	48	52	38	42	38
> 270 days (> 9 months)	83	74	78	79	77	82	73	72	64	72	83	81	84
Robbery													
Age (days)													
Median (50 th percentile)	107	75	90	88	94	100	92	109	85	83	92	94	102
95 th percentile	609	618	634	542	572	603	537	542	476	459	474	379	407
# of Cases in Age Interval													
0 - 60 days (0 - 2 months)	62	91	70	64	65	55	54	57	72	70	57	68	61
61-120 days (3 - 4 months)	32	44	47	52	49	41	43	39	33	42	58	48	46
121-180 days (5 - 6 months)	24	25	19	31	25	28	30	26	25	27	26	26	34
181-270 days (7 - 9 months)	24	16	21	21	17	20	18	23	25	27	23	18	17
> 270 days (> 9 months)	26	22	23	23	18	25	18	17	17	18	23	26	25
Aggravated Assault													
Age (days)													
Median (50 th percentile)	93	93	84	79	81	75	74	83	80	86	89	87	87
95 th percentile	496	488	512	543	523	510	480	487	507	495	524	555	575
# of Cases in Age Interval													
0 - 60 days (0 - 2 months)	158	178	185	195	195	204	218	200	204	189	187	206	181
61-120 days (3 - 4 months)	119	100	97	88	100	110	126	145	135	116	128	108	126
121-180 days (5 - 6 months)	68	67	60	46	47	45	56	65	77	84	77	72	72
181-270 days (7 - 9 months)	51	48	41	45	44	39	37	38	37	42	51	61	65
> 270 days (> 9 months)	80	66	76	75	76	73	67	65	65	57	62	63	66
Burglary/Theft/Larceny													
Age (days)													
Median (50 th percentile)	78	69	68	73	83	89	87	88	99	108	103	94	87
95 th percentile	472	458	440	452	468	498	481	476	506	500	512	547	539
# of Cases in Age Interval													
0 - 60 days (0 - 2 months)	239	290	300	287	254	262	272	231	203	212	230	247	241
121-180 days (5 - 6 months)	131	131	155	198	206	180	162	191	193	156	145	143	170
61-120 days (3 - 4 months)	62	69	71	75	89	110	128	127	93	119	131	94	72
181-270 days (7 - 9 months)	66	61	46	50	47	50	55	68	94	107	97	101	94
> 270 days (> 9 months)	83	81	88	86	90	93	82	79	80	76	89	92	92

(*) The highest crime category since filing is used to classify cases. For example, a case initially charged with homicide is reported as a homicide regardless of whether or not the charge is reduced since filing. On the other hand, if the charge for a case is upgraded later, then the reporting category in later reports will reflect the upgraded (higher) crime category.

Reflects all documents received by **03/15/2013**.

(1) "Controlled Substance - Non Drug Court" are drug related cases that have never been accepted into drug court.

(2) "Controlled Substance - Drug Court" are drug related cases that have been formally accepted into drug court (identified by "Order of Participation").

Table 6 (cont.). Age of Pending Criminal Cases
King County Superior Court

Crime Category ^(*)	Feb 2012	Mar 2012	Apr 2012	May 2012	Jun 2012	Jul 2012	Aug 2012	Sep 2012	Oct 2012	Nov 2012	Dec 2012	Jan 2013	Feb 2013
Motor Vehicle Theft													
Age (days)													
Median (50 th percentile)	93	90	97	108	109	115	91	75	98	107	93	94	75
95 th percentile	441	472	483	479	509	533	571	594	625	655	568	599	603
# of Cases in Age Interval													
0 - 60 days (0 - 2 months)	32	26	19	26	14	18	23	23	14	14	18	25	27
61-120 days (3 - 4 months)	11	16	24	11	15	16	4	6	11	11	9	7	7
121-180 days (5 - 6 months)	9	9	5	8	10	6	6	6	5	5	8	6	7
181-270 days (7 - 9 months)	8	9	11	10	5	7	6	3	4	6	7	5	7
> 270 days (> 9 months)	13	16	13	11	12	15	11	10	10	10	8	10	10
Controlled Substance - Non Drug Court⁽¹⁾													
Age (days)													
Median (50 th percentile)	105	70	77	87	82	77	85	83	101	106	104	108	109
95 th percentile	589	528	558	589	514	485	548	546	577	667	771	864	905
# of Cases in Age Interval													
0 - 60 days (0 - 2 months)	148	211	194	164	205	236	195	153	153	142	101	119	128
61-120 days (3 - 4 months)	100	79	114	130	125	115	127	154	129	108	132	97	70
121-180 days (5 - 6 months)	66	64	57	51	82	72	74	62	71	86	72	50	71
181-270 days (7 - 9 months)	56	54	45	48	34	40	48	53	50	47	52	51	47
> 270 days (> 9 months)	65	58	60	64	68	67	72	61	65	68	68	63	58
Drug Court⁽²⁾													
Age (days)													
Median (50 th percentile)	421	431	446	441	437	442	448	411	393	389	414	393	398
95 th percentile	1010	926	897	912	942	973	978	991	999	935	966	950	976
# of Cases in Age Interval													
0 - 60 days (0 - 2 months)	0	0	0	1	2	0	0	1	0	0	0	0	0
61-120 days (3 - 4 months)	4	2	2	0	7	8	7	9	2	4	2	3	1
121-180 days (5 - 6 months)	8	12	12	10	12	10	18	22	23	20	11	16	8
181-270 days (7 - 9 months)	33	27	30	31	31	29	26	44	48	54	54	48	46
> 270 days (> 9 months)	208	201	199	210	200	200	203	198	198	192	209	222	222
Other													
Age (days)													
Median (50 th percentile)	112	117	112	108	107	104	110	107	102	104	97	94	92
95 th percentile	562	592	543	569	559	590	621	578	630	660	693	701	655
# of Cases in Age Interval													
0 - 60 days (0 - 2 months)	106	118	111	117	121	109	113	109	113	109	114	121	120
61-120 days (3 - 4 months)	82	55	66	69	60	74	68	76	74	71	72	69	77
121-180 days (5 - 6 months)	45	60	56	37	38	38	38	41	44	47	39	37	40
181-270 days (7 - 9 months)	46	37	42	56	51	50	39	39	31	29	32	39	34
> 270 days (> 9 months)	71	73	62	64	59	64	81	79	73	72	69	64	67
Criminal RALJ													
Age (days)													
Median (50 th percentile)	155	141	152	143	144	154	135	139	136	144	147	156	147
95 th percentile	328	424	449	480	510	425	355	371	357	385	400	392	402
# of Cases in Age Interval													
0 - 60 days (0 - 2 months)	35	31	21	29	36	29	31	29	35	31	27	29	26
61-120 days (3 - 4 months)	20	25	35	26	19	27	34	29	29	29	30	30	27
121-180 days (5 - 6 months)	24	23	20	28	35	26	21	25	34	29	28	27	29
181-270 days (7 - 9 months)	33	31	33	28	24	32	37	33	29	30	35	35	37
> 270 days (> 9 months)	25	22	23	24	22	20	18	18	21	21	22	22	23

(*) The highest crime category since filing is used to classify cases. For example, a case initially charged with homicide is reported as a homicide regardless of whether or not the charge is reduced since filing. On the other hand, if the charge for a case is upgraded later, then the reporting category in later reports will reflect the upgraded (higher) crime category.

Reflects all documents received by **03/15/2013**.

(1) "Controlled Substance - Non Drug Court" are drug related cases that have never been accepted into drug court.

(2) "Controlled Substance - Drug Court" are drug related cases that have been formally accepted into drug court (identified by "Order of Participation").

Table 7. Comparison between SEA/KNT: Filings, Resolutions, and Pending Caseload
King County Superior Court

	Apr 2012	May 2012	Jun 2012	Jul 2012	Aug 2012	Sep 2012	Oct 2012	Nov 2012	Nov 2012	Dec 2012	Jan 2013	Feb 2013 ⁽¹⁾
Total Filings												
SEA - # of Cases Filed	377	306	326	331	314	299	269	279	219	237	293	267
KNT - # of Cases Filed	241	206	250	213	241	244	189	228	191	206	221	225
SEA %	61%	60%	57%	61%	57%	55%	59%	55%	53%	54%	57%	54%
KNT %	39%	40%	43%	39%	43%	45%	41%	45%	47%	46%	43%	46%
Total Resolutions												
SEA - # of Cases Resolved	275	286	280	271	284	270	233	327	263	260	291	275
KNT - # of Cases Resolved	224	200	211	228	185	206	188	209	184	184	240	188
SEA - Drug Court Cases Resolved	19	10	8	13	12	13	13	15	8	2	20	14
KNT - Drug Court Cases Resolved	2	6	2	9	2	3	4	7	15	0	1	7
SEA %	53%	57%	56%	52%	59%	55%	53%	59%	56%	59%	53%	57%
KNT %	43%	40%	42%	43%	38%	42%	43%	37%	39%	41%	43%	39%
SEA - Drug Court %	4%	2%	2%	2%	2%	3%	3%	3%	2%	0%	4%	2%
KNT - Drug Court %	0%	1%	0%	2%	0%	1%	1%	1%	3%	0%	0%	1%
Total Pending												
SEA - # of Cases Pending	1352	1370	1390	1422	1444	1472	1464	1415	1387	1371	1359	1332
KNT - # of Cases Pending	1253	1255	1279	1260	1294	1286	1256	1252	1243	1275	1247	1268
SEA - Drug Court Cases Pending	156	157	164	163	157	156	163	154	165	167	166	154
KNT - Drug Court Cases Pending	86	86	91	89	90	98	111	117	105	109	123	123
SEA %	47%	48%	48%	48%	48%	49%	49%	48%	48%	47%	47%	46%
KNT %	44%	44%	44%	43%	43%	43%	42%	43%	43%	44%	43%	44%
SEA - Drug Court %	5%	5%	6%	6%	5%	5%	5%	5%	6%	6%	6%	5%
KNT - Drug Court %	3%	3%	3%	3%	3%	3%	4%	4%	4%	4%	4%	4%

(1) Reflects all documents received by **03/15/2013**.

(2) The number of judges does not include RJC chief judge and the criminal chief judge at SEA.

Table 8. Drug Court Statistics

King County Superior Court

Categories	Jan 2012	Feb 2012	Mar 2012	Apr 2012	May 2012	Jun 2012	Jul 2012	Aug 2012	Sep 2012	Oct 2012	Nov 2012	Dec 2012	Jan 2013	Feb 2013
Referrals - Total	34	60	76	41	43	91	42	50	36	38	25	17	38	30
Directly from PA	15	46	49	22	34	63	26	28	22	18	12	10	25	22
From Mainstream	19	14	17	19	9	28	16	22	14	20	13	7	13	8
Arrestments in Drug Court ⁽¹⁾	10	24	40	30	25	37	36	25	15	35	12	7	20	23
GP in Drug Court ⁽²⁾	2	4	2	2	5	5	5	11	5	14	5	4	8	5
Return to mainstream ⁽³⁾	8	14	17	16	4	8	13	17	27	24	20	19	16	17
Opt-in ⁽⁴⁾	23	5	15	13	23	20	15	24	42	25	25	13	30	11
Graduations ⁽⁵⁾	18	7	16	12	8	18	7	12	15	15	15	0	12	9
Terminations ⁽⁶⁾	4	4	5	4	2	4	7	4	2	7	8	2	9	12

- (1) Arrestments held in drug court regardless opt-in status of the cases.
- (2) Guilty pleas entered in drug court before opt-in.
- (3) Referred to drug court but decision by court order to go to mainstream.
- (4) Opt-in reflects the court order of participation.
- (5) Graduations are dismissals of opted-in cases after the completion of program.
- (6) Terminations are cases that fail in drug court.