

King County Superior Court  
Criminal Department Statistical Report

October 2013

Department of Judicial Administration  
Prepared by: Shiquan Liao, Ph.D., Statistician

Release date: November 20, 2013

**Report #: CRM-2013-10**

## Terminology

### **Age of Pending Case**

Time (days) from filing to resolution, less suspense time if applicable.

### **Age of Resolved Case**

Time (days) from filing to resolution, less suspense time if applicable.

### **End Pending**

Number of pending cases at the end of reporting period.

### **Net Change in Pending**

The change in number of pending cases (end pending minus previous pending).

### **Pending Case**

A case is defined as pending if it is unresolved and not on suspense status.

### **Previous Pending**

Number of pending cases at the beginning of reporting period.

### **Reactivated Case**

A case returns to active from suspense status during the reporting period.

### **Resolution**

A case is resolved if all issues in the complaint are fully adjudicated. However, a drug court case is reported as resolved only when dispositive document is also filed (completed).

### **Resolution Category**

Five resolution categories are used to report resolution of criminal cases: jury trial (CVJV, AQJV), non-jury trial (CVCT, AQCT), guilty plea (GP, GPAT, GPJT), dismissal (DSM), and other (all other resolution codes). For criminal RALJ cases, the resolution categories are: RALJ decision (CDTA, CDTM, CDTR), dismissal (DSRM), and others (any other resolution codes).

### **Suspended Case**

A case is placed in suspense status (removing from active) during the reporting period.

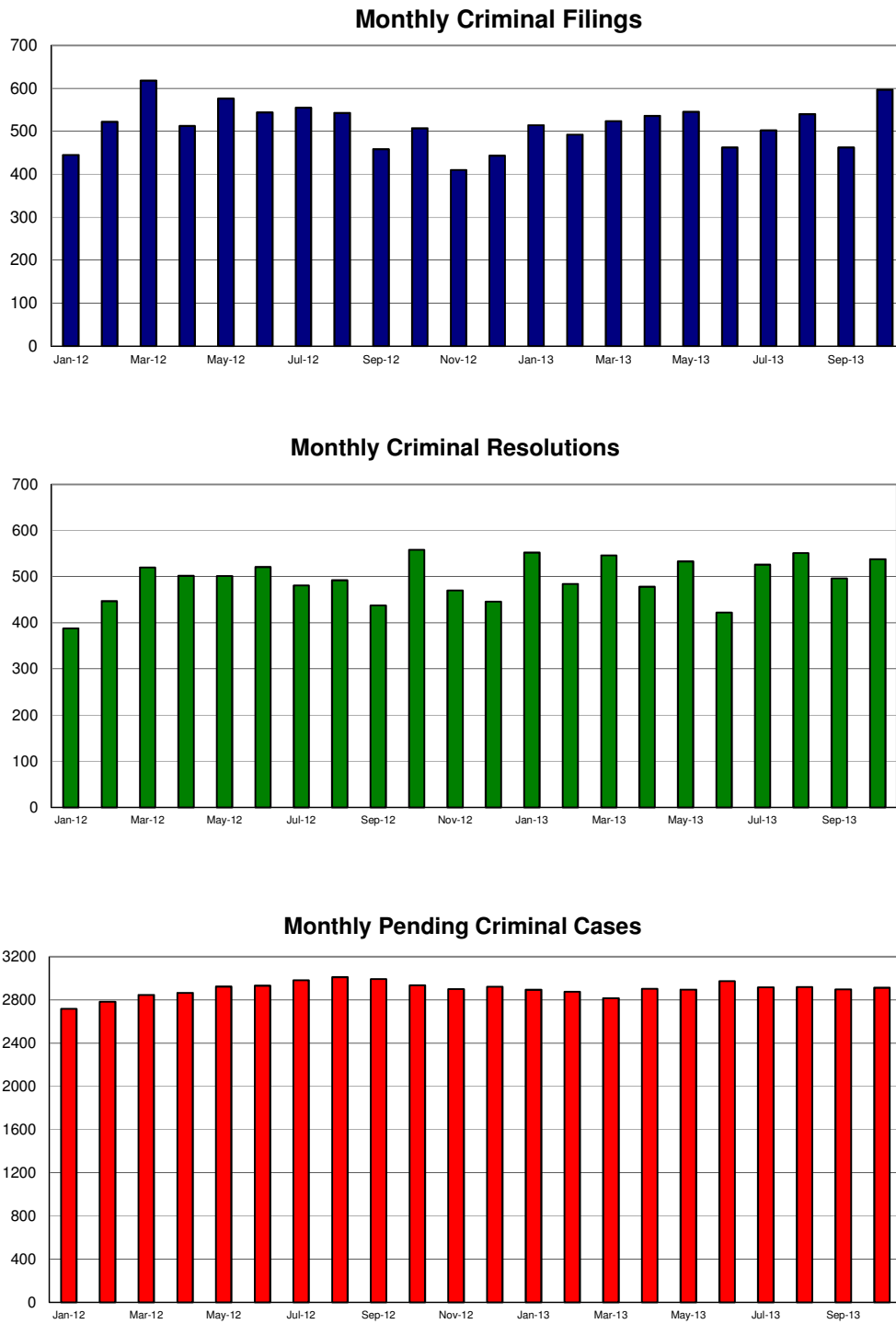
### **Suspense Status**

A case is said to be on suspense status if it is on warrant or appeal.

### **Suspense Time**

Time (days) a case is on suspense status.

Figure 1. Number of Criminal Filings, Resolutions and Pending Caseload by Month



Note: Starting January 2010, RALJ cases are included.

Figure 2. Crime Category as a Percentage of Total Filings by Year

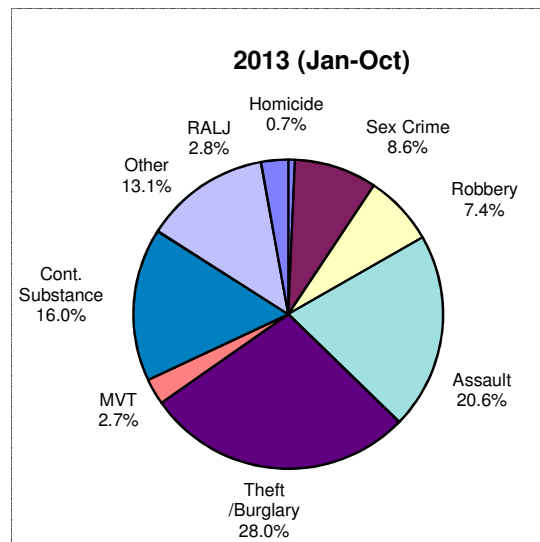
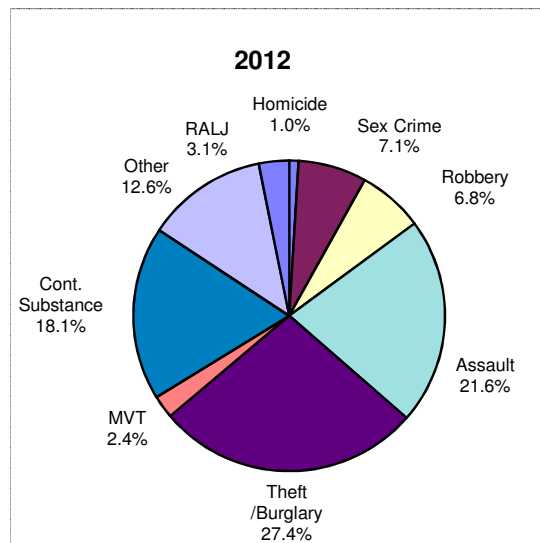
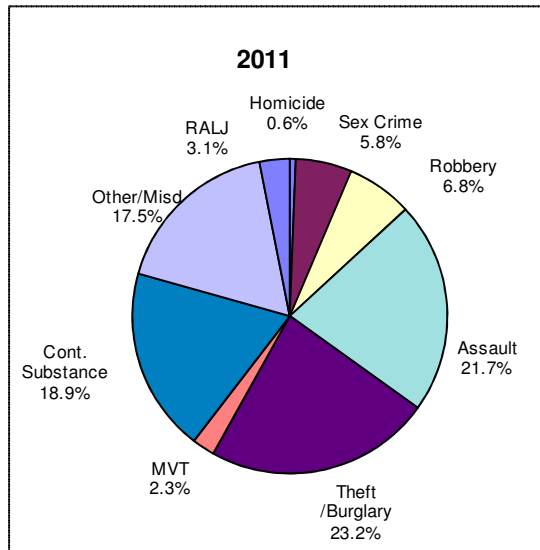


Table 1. Monthly Criminal New Filings by Crime Category <sup>(\*)</sup>  
King County Superior Court

	Jan	Feb	Mar	Apr	May	Jun	Jul	Aug	Sep	Oct	Nov	Dec	ADJ <sup>(1)</sup>	Annual
<b>Total</b>														
2010	515	554	610	512	587	666	574	563	532	608	535	611	(0)	6867
2011	576	513	620	518	525	492	486	590	491	409	478	478	(+2)	6178
2012	445	522	618	512	576	544	555	543	458	507	410	443	(+2)	6135
2013 <sup>(2)</sup>	514	492	524	536	545	462	502	540	462	597				
<b>Homicide</b>														
2010	4	3	5	5	2	3	2	1	4	9	2	2	(0)	42
2011	3	3	2	1	3	5	3	4	2	3	2	7	(0)	38
2012	4	2	7	4	7	2	7	7	7	3	6	4	(+2)	62
2013 <sup>(2)</sup>	3	2	5	3	2	2	4	3	6	6				
<b>Sex Crime</b>														
2010	31	32	27	24	36	37	39	39	28	19	21	28	(+3)	364
2011	34	32	22	36	23	28	23	30	22	28	26	52	(0)	356
2012	34	49	34	60	40	22	38	47	33	20	30	27	(+1)	435
2013 <sup>(2)</sup>	45	39	79	54	49	27	54	43	19	38				
<b>Robbery</b>														
2010	54	43	58	42	34	39	32	35	37	33	23	48	(0)	478
2011	50	27	58	29	25	35	23	36	30	34	36	35	(0)	418
2012	33	38	57	19	50	32	17	32	36	47	24	33	(+1)	419
2013 <sup>(2)</sup>	44	36	33	33	31	40	27	41	48	49				
<b>Aggravated Assault</b>														
2010	107	122	125	117	119	138	139	133	136	132	115	137	(+26)	1546
2011	105	84	139	105	108	126	126	117	118	98	101	116	(0)	1343
2012	91	95	110	104	118	121	115	123	114	124	106	101	(+14)	1336
2013 <sup>(2)</sup>	103	116	102	121	119	76	122	98	103	104				
<b>Burglary/Theft /Larceny</b>														
2010	125	149	141	125	126	137	125	137	134	147	115	153	(+12)	1626
2011	147	124	141	114	141	100	119	140	107	86	92	122	(1)	1434
2012	141	134	178	160	156	121	175	144	119	114	106	133	(+13)	1694
2013 <sup>(2)</sup>	139	127	138	162	147	144	148	147	130	167				
<b>Motor Vehicle Theft</b>														
2010	9	8	12	10	10	17	13	13	17	21	13	18	(0)	161
2011	14	20	12	9	5	9	12	18	12	10	13	11	(0)	145
2012	18	19	15	5	13	7	10	19	11	10	7	12	(-6)	140
2013 <sup>(2)</sup>	17	14	12	15	11	9	16	10	17	19				
<b>Controlled Substance</b>														
2010	80	86	127	98	154	188	124	91	74	115	130	115	(-2)	1380
2011	120	108	107	99	104	97	65	120	100	82	99	67	(1)	1169
2012	57	102	147	88	93	152	116	85	75	90	53	51	(-1)	1108
2013 <sup>(2)</sup>	88	69	82	62	95	94	66	86	58	130				
<b>Other</b>														
2010	94	96	100	76	87	92	93	96	88	115	101	96	(-40)	1094
2011	83	97	123	110	97	71	99	108	84	57	99	56	(0)	1084
2012	51	64	58	61	80	70	65	65	53	74	64	66	(-22)	749
2013 <sup>(2)</sup>	61	77	59	72	71	56	55	88	71	70				
<b>Criminal RALJ</b>														
2010	11	15	15	15	19	15	7	18	14	17	15	14	(0)	176
2011	20	18	16	15	19	21	16	17	16	11	10	12	(0)	191
2012	16	19	12	11	19	17	12	21	10	25	14	16	(0)	192
2013 <sup>(2)</sup>	14	12	14	14	20	14	10	24	10	14				
<b>KNT Filing as % of Total</b>														
2010	36%	40%	40%	39%	36%	38%	40%	36%	43%	39%	34%	41%		38%
2011	40%	42%	46%	43%	44%	45%	44%	41%	43%	47%	41%	47%		44%
2012	41%	41%	39%	40%	43%	39%	43%	45%	41%	45%	47%	47%		42%
2013 <sup>(2)</sup>	43%	46%	44%	46%	46%	39%	41%	35%	43%	41%				

(\*) The highest crime category in a case's history is used to classify cases. For example, a case charged with homicide at any time in the case's history is reported as a homicide regardless of whether the charge is reduced at resolution.

(1) "ADJ" = year-end adjustment.

(2) Reflects all documents received by 11/15/2013.

Table 2. Monthly Criminal Case Resolutions by Crime Category  
King County Superior Court

	Jan	Feb	Mar	Apr	May	Jun	Jul	Aug	Sep	Oct	Nov	Dec	ADJ <sup>(1)</sup>	Annual
<b>Total</b>														
2010	535	528	582	587	554	556	597	601	570	599	454	510	(+70)	6743
2011	590	546	595	560	536	549	514	547	508	552	514	446	(+16)	6463
2012	388	447	520	502	501	521	481	492	438	558	470	446	(+18)	5782
2013 <sup>(2)</sup>	552	484	546	478	533	422	526	551	496	538				
<b>Homicide</b>														
2010	6	4	2	4	6	7	1	7	3	7	7	3	(0)	57
2011	5	6	3	5	4	3	2	5	3	8	4	1	(0)	49
2012	1	5	2	6	3	5	4	1	5	2	2	5	(0)	41
2013 <sup>(2)</sup>	3	3	3	5	10	7	3	4	2	8				
<b>Sex Crime</b>														
2010	27	30	25	20	32	32	32	22	34	22	27	26	(+4)	333
2011	30	42	21	21	18	19	31	30	36	31	24	41	(+2)	346
2012	37	27	37	39	33	38	33	47	31	56	28	25	(+4)	435
2013 <sup>(2)</sup>	34	39	39	47	43	36	33	54	45	47				
<b>Robbery</b>														
2010	27	39	35	58	55	25	55	43	36	42	38	27	(+3)	483
2011	39	38	45	39	33	40	34	31	31	29	34	36	(-1)	428
2012	31	42	34	38	32	52	33	37	29	33	27	25	(0)	413
2013 <sup>(2)</sup>	42	30	40	32	36	38	38	35	45	29				
<b>Aggravated Assault</b>														
2010	101	112	140	127	98	112	127	138	137	154	95	122	(+22)	1485
2011	117	123	131	121	117	100	107	119	129	133	127	98	(+2)	1424
2012	74	96	137	111	126	99	108	85	94	123	128	107	(+3)	1291
2013 <sup>(2)</sup>	102	109	132	98	127	86	120	108	97	138				
<b>Burglary/Theft /Larceny</b>														
2010	115	107	137	140	123	124	114	151	112	115	92	109	(+17)	1456
2011	122	120	128	129	150	135	112	131	106	151	125	105	(+1)	1515
2012	81	116	112	132	124	134	133	141	100	132	103	115	(+3)	1426
2013 <sup>(2)</sup>	148	135	137	113	137	106	148	149	136	124				
<b>Motor Vehicle Theft</b>														
2010	12	12	20	13	7	7	9	13	13	19	6	14	(0)	145
2011	16	10	14	13	12	7	13	9	10	10	9	10	(0)	133
2012	12	8	13	14	20	7	7	17	11	11	9	8	(+1)	138
2013 <sup>(2)</sup>	15	7	13	12	14	8	13	9	13	14				
<b>Controlled Substance - Non Drug Court</b>														
2010	103	104	102	96	87	103	108	105	97	88	87	92	(+14)	1186
2011	101	82	111	97	77	102	89	113	78	81	78	74	(+8)	1088
2012	69	67	79	76	81	71	81	79	82	93	57	78	(+11)	916
2013 <sup>(2)</sup>	104	61	70	64	75	46	70	74	71	62				
<b>Drug Court</b>														
2010	43	14	24	30	34	36	34	23	18	24	15	5	(+2)	302
2011	29	20	21	21	9	16	23	13	15	15	27	6	(0)	218
2012	22	11	21	16	10	22	14	16	17	22	23	2	(0)	204
2013 <sup>(2)</sup>	21	21	30	27	18	20	24	29	20	27				
<b>Other</b>														
2010	85	82	83	87	101	86	99	84	97	98	78	90	(+8)	1078
2011	111	91	105	100	104	107	88	81	83	80	72	57	(-4)	1075
2012 <sup>(2)</sup>	45	62	68	60	53	76	54	55	51	73	69	67	(-1)	732
2013 <sup>(2)</sup>	70	66	70	65	62	56	61	71	55	77				
<b>Criminal RALJ</b>														
2010	16	24	14	12	11	24	18	15	23	30	9	22	(0)	218
2011	20	14	16	14	12	20	15	15	17	14	14	18	(-2)	187
2012	16	13	17	10	19	17	14	14	18	13	24	14	(-3)	186
2013 <sup>(2)</sup>	13	13	12	15	11	19	16	18	12	12				
<b>KNT Filing as % of Total</b>														
2010	41%	44%	38%	36%	38%	39%	37%	37%	35%	37%	36%	37%		37%
2011	38%	34%	37%	40%	40%	33%	34%	40%	42%	40%	41%	38%		38%
2012	41%	45%	44%	41%	43%	46%	39%	43%	44%	39%	42%	41%		42%
2013 <sup>(2)</sup>	44%	40%	46%	44%	45%	38%	41%	49%	42%	38%				

The highest crime category in a case's history is used to classify cases. For example, a case charged with homicide at any time in the case's history is reported as a homicide regardless of whether the charge is reduced at resolution.

- (1) "ADJ" = year-end adjustment.
- (2) Reflects all documents received by 11/15/2013.
- (3) "Controlled Substance - Non Drug Court" are drug related cases that have never been accepted into drug court.
- (4) "Controlled Substance - Drug Court" are drug related cases that have been formally accepted into drug court (identified by "Order of Participation").

Table 3. Number of Cases Resolved and Resolution Category  
King County Superior Court

Crime Category (*)	Nov 2012	Dec 2012	Jan 2013	Feb 2013	Mar 2013	Apr 2013	May 2013	Jun 2013	Jul 2013	Aug 2013	Sep 2013	Oct 2013
<b>Homicide</b>	<b>2</b>	<b>10</b>	<b>3</b>	<b>3</b>	<b>3</b>	<b>5</b>	<b>10</b>	<b>7</b>	<b>3</b>	<b>4</b>	<b>2</b>	<b>8</b>
Resolved by Jury Trial	0	5	2	0	0	2	2	3	0	1	0	2
Resolved by Non-Jury Trial	0	2	0	0	0	0	1	0	0	0	0	0
Resolved by Guilty Plea	2	1	1	2	3	3	7	3	3	3	2	6
Dismissal	0	2	0	1	0	0	0	1	0	0	0	0
Others	0	0	0	0	0	0	0	0	0	0	0	0
<b>Sex Crime</b>	<b>28</b>	<b>25</b>	<b>34</b>	<b>39</b>	<b>39</b>	<b>47</b>	<b>43</b>	<b>36</b>	<b>33</b>	<b>54</b>	<b>45</b>	<b>47</b>
Resolved by Jury Trial	0	1	2	3	3	2	2	0	2	4	2	2
Resolved by Non-Jury Trial	0	0	0	0	0	1	0	0	0	0	0	1
Resolved by Guilty Plea	27	21	26	32	30	42	36	33	28	44	41	40
Dismissal	1	3	6	4	6	2	5	3	3	6	2	4
Others	0	0	0	0	0	0	0	0	0	0	0	0
<b>Robbery</b>	<b>27</b>	<b>25</b>	<b>42</b>	<b>30</b>	<b>40</b>	<b>32</b>	<b>36</b>	<b>38</b>	<b>38</b>	<b>35</b>	<b>45</b>	<b>29</b>
Resolved by Jury Trial	3	0	1	0	4	0	1	6	2	2	2	0
Resolved by Non-Jury Trial	0	0	0	0	0	0	0	0	1	0	0	0
Resolved by Guilty Plea	21	21	38	25	33	30	31	31	32	29	37	26
Dismissal	3	4	3	5	3	2	4	1	4	4	6	3
Others	0	0	0	0	0	0	0	0	0	0	0	0
<b>Aggravated Assault</b>	<b>128</b>	<b>107</b>	<b>102</b>	<b>109</b>	<b>132</b>	<b>98</b>	<b>127</b>	<b>86</b>	<b>120</b>	<b>108</b>	<b>97</b>	<b>138</b>
Resolved by Jury Trial	7	6	6	7	5	9	5	3	8	5	4	7
Resolved by Non-Jury Trial	2	0	0	1	0	0	0	0	0	0	0	0
Resolved by Guilty Plea	108	92	81	86	112	78	103	76	102	93	80	110
Dismissal	10	9	14	15	14	11	19	7	10	10	13	20
Others	1	0	1	0	1	0	0	0	0	0	0	1
<b>Burglary/Theft/Larceny</b>	<b>103</b>	<b>115</b>	<b>148</b>	<b>135</b>	<b>137</b>	<b>113</b>	<b>137</b>	<b>106</b>	<b>148</b>	<b>149</b>	<b>136</b>	<b>124</b>
Resolved by Jury Trial	2	2	4	4	4	3	8	4	3	5	3	1
Resolved by Non-Jury Trial	0	1	0	1	0	0	0	0	0	0	0	0
Resolved by Guilty Plea	89	106	132	116	126	102	113	90	127	127	128	105
Dismissal	12	6	12	14	7	8	16	12	18	17	5	18
Others	0	0	0	0	0	0	0	0	0	0	0	0
<b>Motor Vehicle Theft</b>	<b>9</b>	<b>8</b>	<b>15</b>	<b>7</b>	<b>13</b>	<b>12</b>	<b>14</b>	<b>8</b>	<b>13</b>	<b>9</b>	<b>13</b>	<b>14</b>
Resolved by Jury Trial	0	0	0	0	0	0	0	0	0	0	0	0
Resolved by Non-Jury Trial	0	0	0	0	0	0	0	0	0	0	0	0
Resolved by Guilty Plea	8	8	10	7	10	11	12	4	11	9	10	12
Dismissal	1	0	5	0	3	1	2	4	2	0	3	2
Others	0	0	0	0	0	0	0	0	0	0	0	0
<b>Controlled Substance - Non Drug Court<sup>(1)</sup></b>	<b>57</b>	<b>78</b>	<b>104</b>	<b>61</b>	<b>70</b>	<b>64</b>	<b>75</b>	<b>46</b>	<b>70</b>	<b>74</b>	<b>71</b>	<b>62</b>
Resolved by Jury Trial	0	0	0	1	2	0	3	0	0	0	2	1
Resolved by Non-Jury Trial	0	0	2	0	0	1	0	1	0	0	1	0
Resolved by Guilty Plea	50	65	85	55	49	52	66	40	59	62	50	50
Dismissal	7	13	17	5	19	11	6	5	11	12	18	11
Others	0	0	0	0	0	0	0	0	0	0	0	0
<b>Drug Court<sup>(2)</sup></b>	<b>23</b>	<b>2</b>	<b>21</b>	<b>21</b>	<b>30</b>	<b>27</b>	<b>18</b>	<b>20</b>	<b>24</b>	<b>29</b>	<b>20</b>	<b>27</b>
Resolved by Non-Jury Trial	4	1	4	9	6	5	2	5	11	5	0	7
Resolved by Guilty Plea	4	1	5	3	1	2	3	1	0	1	9	2
Dismissal	15	0	12	9	23	20	13	14	13	23	11	28
Others	0	0	0	0	0	0	0	0	0	0	0	0
<b>Other</b>	<b>69</b>	<b>67</b>	<b>70</b>	<b>66</b>	<b>70</b>	<b>65</b>	<b>62</b>	<b>56</b>	<b>61</b>	<b>71</b>	<b>55</b>	<b>77</b>
Resolved by Jury Trial	2	2	5	3	2	3	2	2	3	1	1	3
Resolved by Non-Jury Trial	1	1	1	0	1	0	0	0	1	0	0	0
Resolved by Guilty Plea	49	46	49	46	50	47	43	47	42	55	42	55
Dismissal	16	17	12	17	14	13	17	7	13	13	12	18
Others	1	1	3	0	3	2	0	0	2	2	0	1
<b>Criminal RALJ</b>	<b>24</b>	<b>14</b>	<b>13</b>	<b>13</b>	<b>12</b>	<b>15</b>	<b>11</b>	<b>19</b>	<b>16</b>	<b>18</b>	<b>12</b>	<b>12</b>
RALJ Decision	6	6	9	7	7	7	9	14	8	12	7	9
Dismissal	10	4	3	6	4	7	2	5	7	6	5	3
Others	6	4	1	0	1	1	0	0	1	0	0	0

(\*) The highest crime category in a case's history is used to classify cases.

Reflects all documents received by **11/15/2013**.

(1) "Controlled Substance - Non Drug Court" are drug related cases that have never been accepted into drug court.

(2) "Controlled Substance - Drug Court" are drug related cases that have been formally accepted into drug court (identified by "Order of Participation").

(3) DV Subset includes cases with a DV flag in at least one of the charges within the specific crime category at the time of the reporting.

Table 4. Age (days) of Resolved Cases  
King County Superior Court

Crime Category <sup>(*)</sup>	Nov 2012	Dec 2012	Jan 2013	Feb 2013	Mar 2013	Apr 2013	May 2013	Jun 2013	Jul 2013	Aug 2013	Sep 2013	Oct 2013
<b>Homicide <sup>(**)</sup></b>												
50% Cases Resolved by Day	667	357	525	566	350	226	341	429	458	592	446	281
90% Cases Resolved by Day	678	972	621	703	475	1108	715	525	732	1003	488	684
Average Time (days)	667	397	436	469	370	433	387	333	509	653	446	345
<b>Sex Crime</b>												
50% Cases Resolved by Day	93	201	182	166	140	220	99	66	140	139	159	145
90% Cases Resolved by Day	287	701	450	443	605	548	498	543	351	392	657	504
Average Time (days)	170	308	222	210	249	236	192	154	202	189	220	213
<b>Robbery</b>												
50% Cases Resolved by Day	109	146	129	126	93	140	94	113	166	110	191	115
90% Cases Resolved by Day	254	266	243	311	283	353	278	412	326	280	446	218
Average Time (days)	140	165	159	156	133	184	129	203	189	136	202	128
<b>Aggravated Assault</b>												
50% Cases Resolved by Day	102	88	94	110	113	111	94	102	82	112	110	113
90% Cases Resolved by Day	300	182	223	303	295	300	291	232	293	259	333	274
Average Time (days)	130	101	118	146	149	145	168	134	128	133	151	142
<b>Burglary/Theft/Larceny</b>												
50% Cases Resolved by Day	111	111	115	132	99	112	95	97	102	117	112	118
90% Cases Resolved by Day	247	237	277	298	244	289	243	270	324	276	257	281
Average Time (days)	127	136	142	152	132	147	138	132	142	150	132	144
<b>Motor Vehicle Theft</b>												
50% Cases Resolved by Day	86	73	61	97	108	145	54	161	133	106	94	68
90% Cases Resolved by Day	256	139	254	247	350	283	99	634	270	298	152	182
Average Time (days)	99	74	115	98	151	159	80	209	140	152	108	78
<b>Controlled Substance</b>												
50% Cases Resolved by Day	116	137	128	130	110	97	104	88	112	100	122	112
90% Cases Resolved by Day	217	263	307	302	224	328	292	218	281	291	253	318
Average Time (days)	141	152	151	149	121	141	134	99	175	136	149	154
<b>Drug Court <sup>(2)</sup></b>												
50% Cases Resolved by Day	588	325	525	506	656	537	658	590	463	537	455	460
90% Cases Resolved by Day	983	437	912	961	989	847	1099	1062	680	658	791	747
Average Time (days)	673	325	573	581	746	589	716	615	478	551	496	507
<b>Other</b>												
50% Cases Resolved by Day	113	100	97	84	98	83	93	109	82	103	90	76
90% Cases Resolved by Day	308	254	315	267	292	357	447	333	281	312	272	342
Average Time (days)	131	123	138	153	132	201	164	141	124	135	126	129
<b>Criminal RALJ</b>												
50% Cases Resolved by Day	234	241	247	259	251	226	295	277	260	278	294	295
90% Cases Resolved by Day	517	343	435	325	408	406	561	453	518	420	447	658
Average Time (days)	217	280	257	276	285	250	339	315	302	309	302	350

(\*) The highest crime category in a case's history is used to classify cases. For example, a case charged with homicide at any time during the case's history is reported as a homicide regardless of whether the charge is reduced at resolution.

(\*\*) Due to small number of resolutions in this category, the age statistics for homicides are expected to vary considerably.

Reflects all documents received by 11/15/2013.

(1) "Controlled Substance - Non Drug Court" are drug related cases that have never been accepted into drug court.

(2) "Controlled Substance - Drug Court" are drug related cases that have been formally accepted into drug court (identified by "Order of Participation").

(3) DV Subset includes cases with a DV flag in at least one of the charges within the specific crime category at the time of the reporting.



Table 5. Pending Criminal Cases  
King County Superior Court

Crime Category <sup>(*)</sup>	Oct 2012	Nov 2012	Dec 2012	Jan 2013	Feb 2013	Mar 2013	Apr 2013	May 2013	Jun 2013	Jul 2013	Aug 2013	Sep 2013	Oct 2013
<b>Total</b>													
Previous Pending	2994	2938	2900	2922	2895	2877	2817	2903	2897	2975	2917	2921	2899
New Filing (+)	507	410	443	514	492	524	536	545	462	502	540	462	597
Resolved (-)	558	470	446	552	484	546	478	533	422	526	551	496	538
<b>End Pending</b>	<b>2938</b>	<b>2900</b>	<b>2922</b>	<b>2895</b>	<b>2877</b>	<b>2817</b>	<b>2903</b>	<b>2897</b>	<b>2975</b>	<b>2917</b>	<b>2921</b>	<b>2899</b>	<b>2914</b>
<b>Homicide</b>													
Previous Pending	63	68	75	72	76	74	72	72	66	61	61	62	66
New Filing (+)	3	6	4	3	2	5	3	2	2	4	3	6	6
Resolved (-)	2	2	5	3	3	3	5	10	7	3	4	2	8
<b>End Pending</b>	<b>68</b>	<b>75</b>	<b>72</b>	<b>76</b>	<b>74</b>	<b>72</b>	<b>72</b>	<b>66</b>	<b>61</b>	<b>61</b>	<b>62</b>	<b>66</b>	<b>62</b>
<b>Sex Crime</b>													
Previous Pending	277	251	248	247	251	252	261	274	281	286	295	302	280
New Filing (+)	20	30	27	45	39	79	54	49	27	54	43	19	38
Resolved (-)	56	28	25	34	39	39	47	43	36	33	54	45	47
<b>End Pending</b>	<b>251</b>	<b>248</b>	<b>247</b>	<b>251</b>	<b>252</b>	<b>261</b>	<b>274</b>	<b>281</b>	<b>286</b>	<b>295</b>	<b>302</b>	<b>280</b>	<b>268</b>
<b>Robbery</b>													
Previous Pending	162	172	184	187	186	183	184	184	181	184	180	167	181
New Filing (+)	47	24	33	44	36	33	33	31	40	27	41	48	49
Resolved (-)	33	27	25	42	30	40	32	36	38	38	35	45	29
<b>End Pending</b>	<b>172</b>	<b>184</b>	<b>187</b>	<b>186</b>	<b>183</b>	<b>184</b>	<b>184</b>	<b>181</b>	<b>184</b>	<b>180</b>	<b>167</b>	<b>181</b>	<b>192</b>
<b>Aggravated Assault</b>													
Previous Pending	513	518	488	505	510	510	489	518	514	505	494	501	506
New Filing (+)	124	106	101	103	116	102	121	119	76	122	98	103	104
Resolved (-)	123	128	107	102	109	132	98	127	86	120	108	97	138
<b>End Pending</b>	<b>518</b>	<b>488</b>	<b>505</b>	<b>510</b>	<b>510</b>	<b>489</b>	<b>518</b>	<b>514</b>	<b>505</b>	<b>494</b>	<b>501</b>	<b>506</b>	<b>466</b>
<b>Burglary/Theft/Larceny</b>													
Previous Pending	696	663	670	692	677	669	645	692	690	745	722	720	702
New Filing (+)	114	106	133	139	127	138	162	147	144	148	147	130	167
Resolved (-)	132	103	115	148	135	137	113	137	106	148	149	136	124
<b>End Pending</b>	<b>663</b>	<b>670</b>	<b>692</b>	<b>677</b>	<b>669</b>	<b>645</b>	<b>692</b>	<b>690</b>	<b>745</b>	<b>722</b>	<b>720</b>	<b>702</b>	<b>721</b>
<b>Motor Vehicle Theft</b>													
Previous Pending	48	44	46	50	53	58	57	55	61	54	54	58	64
New Filing (+)	10	7	12	17	14	12	15	11	9	16	10	17	19
Resolved (-)	11	9	8	15	7	13	12	14	8	13	9	13	14
<b>End Pending</b>	<b>44</b>	<b>46</b>	<b>50</b>	<b>53</b>	<b>58</b>	<b>57</b>	<b>55</b>	<b>61</b>	<b>54</b>	<b>54</b>	<b>58</b>	<b>64</b>	<b>65</b>
<b>Controlled Substance - Non Drug Court <sup>(1)</sup></b>													
Previous Pending	483	468	451	425	380	374	374	390	393	421	418	390	373
Resolved (-)	93	57	78	104	61	70	62	75	46	70	74	71	62
<b>End Pending</b>	<b>468</b>	<b>451</b>	<b>425</b>	<b>380</b>	<b>374</b>	<b>374</b>	<b>390</b>	<b>393</b>	<b>421</b>	<b>418</b>	<b>390</b>	<b>373</b>	<b>423</b>
<b>Drug Court <sup>(2)</sup></b>													
Previous Pending	274	271	270	276	289	277	272	265	260	253	240	242	239
New Filing (+)	25	25	13	30	11	22	12	19	14	11	27	20	15
Resolved (-)	22	23	2	21	21	30	27	18	20	24	29	20	27
<b>End Pending</b>	<b>271</b>	<b>270</b>	<b>276</b>	<b>289</b>	<b>277</b>	<b>272</b>	<b>265</b>	<b>260</b>	<b>253</b>	<b>240</b>	<b>242</b>	<b>239</b>	<b>232</b>
<b>Other</b>													
Previous Pending	344	335	328	326	330	338	319	310	299	319	311	330	341
New Filing (+)	74	64	66	61	77	59	72	71	56	55	88	71	70
Resolved (-)	73	69	67	70	66	70	65	62	56	61	71	50	77
<b>End Pending</b>	<b>335</b>	<b>328</b>	<b>326</b>	<b>330</b>	<b>338</b>	<b>319</b>	<b>310</b>	<b>299</b>	<b>319</b>	<b>311</b>	<b>330</b>	<b>341</b>	<b>334</b>
<b>Criminal RALJ</b>													
Previous Pending	134	148	140	142	143	142	144	143	152	147	142	149	147
New Filing (+)	25	14	16	14	12	14	14	20	14	10	24	10	14
Resolved (-)	13	24	14	13	13	12	15	11	19	16	18	12	12
<b>End Pending</b>	<b>148</b>	<b>140</b>	<b>142</b>	<b>143</b>	<b>142</b>	<b>144</b>	<b>143</b>	<b>152</b>	<b>147</b>	<b>142</b>	<b>149</b>	<b>147</b>	<b>151</b>
<b>Total Pending Caseload</b>													
SEA (%)	53%	54%	52%	53%	52%	51%	52%	52%	52%	51%	54%	54%	54%
KNT (%)	47%	46%	48%	47%	48%	49%	48%	48%	48%	49%	46%	46%	46%

(\*) Information from filing to the reporting time is used to determine crime category for pending cases. The category for a case in this table is the highest crime category since filing. For example, a case initially charged with homicide is reported as a homicide regardless of whether or not the charge is reduced since filing. On the other hand, if the charge for a case is upgraded later, then the reporting category in later reports will reflect the upgraded (higher) crime category.

Reflects all documents received by 11/15/2013. Drug court cases are identified by docket code "ORPAR" (Order for Participation).

Table 6. Age of Pending Criminal Cases  
King County Superior Court

Crime Category (*)	Oct 2012	Nov 2012	Dec 2012	Jan 2013	Feb 2013	Mar 2013	Apr 2013	May 2013	Jun 2013	Jul 2013	Aug 2013	Sep 2013	Oct 2013
<b>Total</b>													
<b>Age (days)</b>													
Median (50 <sup>th</sup> percentile)	115	124	127	123	123	117	111	113	112	115	115	118	112
95 <sup>th</sup> percentile	660	671	691	701	681	685	674	677	693	710	725	739	738
<b># of Cases in Age Interval</b>													
0 - 60 days (0 - 2 months)	846	823	787	877	854	859	938	927	923	867	863	895	941
61-120 days (3 - 4 months)	678	592	620	548	569	575	585	589	626	638	634	592	576
121-180 days (5 - 6 months)	417	464	450	379	372	345	355	382	406	399	421	403	406
181-270 days (7 - 9 months)	374	404	398	412	400	354	330	311	329	345	348	374	375
> 270 days (> 9 months)	623	617	667	679	682	684	695	688	691	668	655	635	616
<b>Homicide</b>													
<b>Age (days)</b>													
Median (50 <sup>th</sup> percentile)	223	232	249	253	265	261	279	298	328	309	332	314	321
95 <sup>th</sup> percentile	937	976	1007	1038	843	873	772	803	833	864	838	868	899
<b># of Cases in Age Interval</b>													
0 - 60 days (0 - 2 months)	10	13	7	5	8	6	8	7	3	4	7	10	9
61-120 days (3 - 4 months)	13	12	10	6	6	5	8	6	7	6	4	4	7
121-180 days (5 - 6 months)	7	9	12	15	10	12	5	5	7	6	7	7	2
181-270 days (7 - 9 months)	8	10	9	12	15	14	14	12	5	9	8	10	8
> 270 days (> 9 months)	30	31	34	36	35	35	37	36	39	36	36	35	36
<b>Sex Crime</b>													
<b>Age (days)</b>													
Median (50 <sup>th</sup> percentile)	170	182	176	172	171	168	118	117	125	136	139	149	163
95 <sup>th</sup> percentile	680	690	708	729	736	695	692	712	742	743	717	684	694
<b># of Cases in Age Interval</b>													
0 - 60 days (0 - 2 months)	42	43	46	57	62	75	89	81	69	69	86	66	54
61-120 days (3 - 4 months)	59	43	34	35	39	42	49	62	68	62	52	46	55
121-180 days (5 - 6 months)	38	38	46	36	29	25	29	37	41	56	59	49	39
181-270 days (7 - 9 months)	48	52	38	42	38	42	33	27	32	36	33	50	55
> 270 days (> 9 months)	64	72	83	81	84	77	74	74	76	72	72	69	65
<b>Robbery</b>													
<b>Age (days)</b>													
Median (50 <sup>th</sup> percentile)	85	83	92	94	102	97	93	95	93	92	104	92	71
95 <sup>th</sup> percentile	476	459	474	379	407	401	411	442	452	478	503	434	465
<b># of Cases in Age Interval</b>													
0 - 60 days (0 - 2 months)	72	70	57	68	61	68	64	62	63	69	45	71	90
61-120 days (3 - 4 months)	33	42	58	48	46	40	43	44	43	40	51	48	30
121-180 days (5 - 6 months)	25	27	26	26	34	33	26	23	27	25	22	25	32
181-270 days (7 - 9 months)	25	27	23	18	17	20	25	28	24	20	20	16	16
> 270 days (> 9 months)	17	18	23	26	25	23	26	24	27	26	29	21	24
<b>Aggravated Assault</b>													
<b>Age (days)</b>													
Median (50 <sup>th</sup> percentile)	80	86	89	87	87	91	79	79	84	98	102	91	86
95 <sup>th</sup> percentile	507	495	524	555	575	584	583	614	570	645	598	572	659
<b># of Cases in Age Interval</b>													
0 - 60 days (0 - 2 months)	204	189	187	206	181	184	208	211	183	165	178	184	182
61-120 days (3 - 4 months)	135	116	128	108	126	124	115	113	130	129	109	113	106
121-180 days (5 - 6 months)	77	84	77	72	72	55	70	75	69	71	78	76	58
181-270 days (7 - 9 months)	37	42	51	61	65	61	56	45	51	54	59	63	56
> 270 days (> 9 months)	65	57	62	63	66	65	69	70	72	75	77	70	64
<b>Burglary/Theft/Larceny</b>													
<b>Age (days)</b>													
Median (50 <sup>th</sup> percentile)	99	108	103	94	87	95	84	87	88	91	90	95	90
95 <sup>th</sup> percentile	506	500	512	547	539	602	541	572	530	552	533	561	540
<b># of Cases in Age Interval</b>													
0 - 60 days (0 - 2 months)	203	212	230	247	241	230	274	266	279	250	252	253	268
121-180 days (5 - 6 months)	193	156	145	143	170	162	160	159	182	180	189	167	167
61-120 days (3 - 4 months)	93	119	131	94	72	86	102	99	103	96	100	99	108
181-270 days (7 - 9 months)	94	107	97	101	94	75	57	62	76	83	74	74	72
> 270 days (> 9 months)	80	76	89	92	92	92	99	104	105	103	105	109	106

(\*) The highest crime category since filing is used to classify cases. For example, a case initially charged with homicide is reported as a homicide regardless of whether or not the charge is reduced since filing. On the other hand, if the charge for a case is upgraded later, then the reporting category in later reports will reflect the upgraded (higher) crime category.

Reflects all documents received by 11/15/2013.

(1) "Controlled Substance - Non Drug Court" are drug related cases that have never been accepted into drug court.

(2) "Controlled Substance - Drug Court" are drug related cases that have been formally accepted into drug court (identified by "Order of Participation").

Table 6 (cont.). Age of Pending Criminal Cases  
King County Superior Court

Crime Category <sup>(*)</sup>	Oct 2012	Nov 2012	Dec 2012	Jan 2013	Feb 2013	Mar 2013	Apr 2013	May 2013	Jun 2013	Jul 2013	Aug 2013	Sep 2013	Oct 2013
<b>Motor Vehicle Theft</b>													
<b>Age (days)</b>													
Median (50 <sup>th</sup> percentile)	98	107	93	94	75	73	82	110	117	72	78	77	91
95 <sup>th</sup> percentile	625	655	568	599	603	634	664	628	725	401	432	454	485
<b># of Cases in Age Interval</b>													
0 - 60 days (0 - 2 months)	14	14	18	25	27	24	19	20	18	23	24	26	27
61-120 days (3 - 4 months)	11	11	9	7	7	15	18	18	9	11	12	16	14
121-180 days (5 - 6 months)	5	5	8	6	7	5	4	9	15	9	6	4	6
181-270 days (7 - 9 months)	4	6	7	5	7	3	5	5	4	5	10	13	10
> 270 days (> 9 months)	10	10	8	10	10	10	9	9	8	6	6	5	8
<b>Controlled Substance - Non Drug Court<sup>(1)</sup></b>													
<b>Age (days)</b>													
Median (50 <sup>th</sup> percentile)	101	106	104	108	109	95	91	89	95	95	103	105	88
95 <sup>th</sup> percentile	577	667	771	864	905	910	919	922	711	730	748	778	735
<b># of Cases in Age Interval</b>													
0 - 60 days (0 - 2 months)	153	142	101	119	128	134	141	151	155	149	114	121	165
61-120 days (3 - 4 months)	129	108	132	97	70	83	91	87	90	100	103	92	87
121-180 days (5 - 6 months)	71	86	72	50	71	50	45	52	61	55	61	54	64
181-270 days (7 - 9 months)	50	47	52	51	47	48	47	35	41	42	45	38	47
> 270 days (> 9 months)	65	68	68	63	58	59	66	68	74	72	67	68	60
<b>Drug Court<sup>(2)</sup></b>													
<b>Age (days)</b>													
Median (50 <sup>th</sup> percentile)	393	389	414	393	398	396	404	411	417	440	429	427	408
95 <sup>th</sup> percentile	999	935	966	950	976	913	933	900	870	902	941	971	1002
<b># of Cases in Age Interval</b>													
0 - 60 days (0 - 2 months)	0	0	0	0	0	0	0	0	0	0	1	1	0
61-120 days (3 - 4 months)	2	4	2	3	1	4	8	9	3	5	6	12	8
121-180 days (5 - 6 months)	23	20	11	16	8	11	9	11	19	15	12	9	18
181-270 days (7 - 9 months)	48	54	54	48	46	31	29	29	30	31	45	46	38
> 270 days (> 9 months)	198	192	209	222	222	226	219	211	201	189	178	171	168
<b>Other</b>													
<b>Age (days)</b>													
Median (50 <sup>th</sup> percentile)	102	104	97	94	92	104	96	104	95	97	90	100	98
95 <sup>th</sup> percentile	630	660	693	701	655	783	772	676	700	731	755	781	808
<b># of Cases in Age Interval</b>													
0 - 60 days (0 - 2 months)	113	109	114	121	120	112	108	99	119	104	122	129	122
61-120 days (3 - 4 months)	74	71	72	69	77	71	68	63	67	75	76	70	69
121-180 days (5 - 6 months)	44	47	39	37	40	38	40	42	40	39	48	50	46
181-270 days (7 - 9 months)	31	29	32	39	34	30	27	34	33	35	27	36	41
> 270 days (> 9 months)	73	72	69	64	67	68	67	61	60	58	57	56	56
<b>Criminal RALJ</b>													
<b>Age (days)</b>													
Median (50 <sup>th</sup> percentile)	136	144	147	156	147	160	163	157	157	147	132	144	162
95 <sup>th</sup> percentile	357	385	400	392	402	420	434	395	392	379	391	384	414
<b># of Cases in Age Interval</b>													
0 - 60 days (0 - 2 months)	35	31	27	29	26	26	27	30	34	24	34	34	24
61-120 days (3 - 4 months)	29	29	30	30	27	29	25	28	27	30	32	24	33
121-180 days (5 - 6 months)	34	29	28	27	29	30	25	29	24	27	28	30	33
181-270 days (7 - 9 months)	29	30	35	35	37	30	37	34	33	30	27	28	32
> 270 days (> 9 months)	21	21	22	22	23	29	29	31	29	31	28	31	29

(\*) The highest crime category since filing is used to classify cases. For example, a case initially charged with homicide is reported as a homicide regardless of whether or not the charge is reduced since filing. On the other hand, if the charge for a case is upgraded later, then the reporting category in later reports will reflect the upgraded (higher) crime category.

Reflects all documents received by 11/15/2013.

(1) "Controlled Substance - Non Drug Court" are drug related cases that have never been accepted into drug court.

(2) "Controlled Substance - Drug Court" are drug related cases that have been formally accepted into drug court (identified by "Order of Participation").

Table 7. Comparison between SEA/KNT: Filings, Resolutions, and Pending Caseload  
King County Superior Court

	Nov 2012	Dec 2012	Jan 2013	Feb 2013	Mar 2013	Apr 2013	May 2013	Jun 2013	Jul 2013	Aug 2013	Sep 2013	Oct 2013 <sup>(1)</sup>
<b>Total Filings</b>												
SEA - # of Cases Filed	219	237	293	267	295	292	292	284	294	351	264	353
KNT - # of Cases Filed	191	206	221	225	229	244	253	178	208	189	198	244
SEA %	53%	54%	57%	54%	56%	55%	54%	62%	59%	65%	57%	59%
KNT %	47%	46%	43%	46%	44%	45%	46%	38%	41%	35%	43%	41%
<b>Total Resolutions</b>												
SEA - # of Cases Resolved	263	260	291	275	286	250	279	247	297	259	271	316
KNT - # of Cases Resolved	184	184	240	188	230	201	236	155	215	263	205	194
SEA - Drug Court Cases Resolved	8	2	20	14	11	19	12	13	15	12	16	19
KNT - Drug Court Cases Resolved	15	0	1	7	19	8	6	7	9	17	4	8
SEA %	56%	59%	53%	57%	52%	52%	52%	59%	56%	47%	55%	59%
KNT %	39%	41%	43%	39%	42%	42%	44%	36%	41%	48%	41%	36%
SEA - Drug Court %	2%	0%	4%	2%	2%	4%	2%	3%	3%	2%	3%	4%
KNT - Drug Court %	3%	0%	0%	1%	3%	2%	1%	2%	2%	3%	1%	1%
<b>Total Pending</b>												
SEA - # of Cases Pending	1387	1371	1359	1332	1291	1348	1350	1401	1369	1439	1439	1431
KNT - # of Cases Pending	1243	1275	1247	1268	1254	1290	1287	1321	1308	1240	1221	1251
SEA - Drug Court Cases Pending	165	167	166	154	157	150	148	146	134	141	141	139
KNT - Drug Court Cases Pending	105	109	123	123	115	115	112	107	106	101	98	93
SEA %	48%	47%	47%	46%	46%	46%	47%	47%	47%	49%	50%	49%
KNT %	43%	44%	43%	44%	45%	44%	44%	44%	45%	42%	42%	43%
SEA - Drug Court %	6%	6%	6%	5%	6%	5%	5%	5%	5%	5%	5%	5%
KNT - Drug Court %	4%	4%	4%	4%	4%	4%	4%	4%	4%	3%	3%	3%

(1) Reflects all documents received by 11/15/2013.

(2) The number of judges does not include RJC chief judge and the criminal chief judge at SEA.

Table 8. Drug Court Statistics

King County Superior Court

Categories	Sep 2012	Oct 2012	Nov 2012	Dec 2012	Jan 2013	Feb 2013	Mar 2013	Apr 2013	May 2013	Jun 2013	Jul 2013	Aug 2013	Sep 2013	Oct 2013
Referrals - Total	36	38	25	17	38	30	50	28	41	23	31	28	26	50
Directly from PA	22	18	12	10	25	22	34	17	29	19	14	12	19	41
From Mainstream	14	20	13	7	13	8	16	11	12	4	17	16	7	9
Arraignments in Drug Court <sup>(1)</sup>	15	35	12	7	20	23	15	30	16	17	15	13	14	20
GP in Drug Court <sup>(2)</sup>	5	14	5	4	8	5	4	1	6	1	3	4	4	1
Return to mainstream <sup>(3)</sup>	27	24	20	19	16	17	21	17	23	18	10	14	9	8
Opt-in <sup>(4)</sup>	42	25	25	13	30	11	22	12	19	13	11	27	20	15
Graduations <sup>(5)</sup>	15	15	15	0	12	9	23	20	13	14	13	23	11	18
Terminations <sup>(6)</sup>	2	7	8	2	9	12	7	7	5	6	11	6	9	9

- (1) Arraignments held in drug court regardless opt-in status of the cases.
- (2) Guilty pleas entered in drug court before opt-in.
- (3) Referred to drug court but decision by court order to go to mainstream.
- (4) Opt-in reflects the court order of participation.
- (5) Graduations are dismissals of opted-in cases after the completion of program.
- (6) Terminations are cases that fail in drug court.