

King County Superior Court  
Criminal Department Statistical Report

October 2014

Department of Judicial Administration  
Prepared by: Shiquan Liao, Ph.D., Statistician

Release date: November 20, 2014

**Report #: CRM-2014-10**

## Terminology

### **Age of Pending Case**

Time (days) from filing to resolution, less suspense time if applicable.

### **Age of Resolved Case**

Time (days) from filing to resolution, less suspense time if applicable.

### **End Pending**

Number of pending cases at the end of reporting period.

### **Net Change in Pending**

The change in number of pending cases (end pending minus previous pending).

### **Pending Case**

A case is defined as pending if it is unresolved and not on suspense status.

### **Previous Pending**

Number of pending cases at the beginning of reporting period.

### **Reactivated Case**

A case returns to active from suspense status during the reporting period.

### **Resolution**

A case is resolved if all issues in the complaint are fully adjudicated. However, a drug court case is reported as resolved only when dispositive document is also filed (completed).

### **Resolution Category**

Five resolution categories are used to report resolution of criminal cases: jury trial (CVJV, AQJV), non-jury trial (CVCT, AQCT), guilty plea (GP, GPAT, GPJT), dismissal (DSM), and other (all other resolution codes). For criminal RALJ cases, the resolution categories are: RALJ decision (CDTA, CDTM, CDTR), dismissal (DSRM), and others (any other resolution codes).

### **Suspended Case**

A case is placed in suspense status (removing from active) during the reporting period.

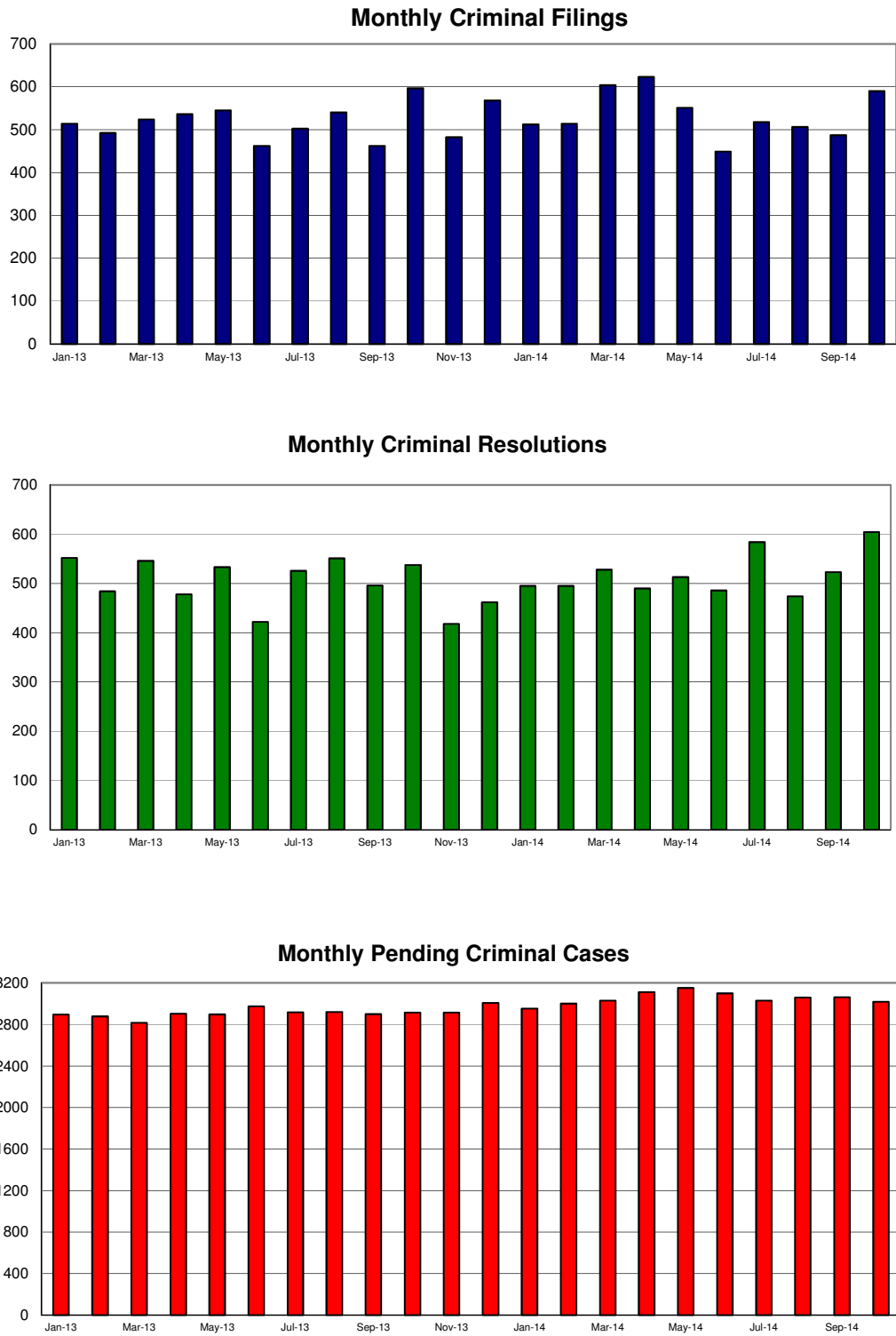
### **Suspense Status**

A case is said to be on suspense status if it is on warrant or appeal.

### **Suspense Time**

Time (days) a case is on suspense status.

Figure 1. Number of Criminal Filings, Resolutions and Pending Caseload by Month



Note: Starting January 2010, RALJ cases are included.

Figure 2. Crime Category as a Percentage of Total Filings by Year

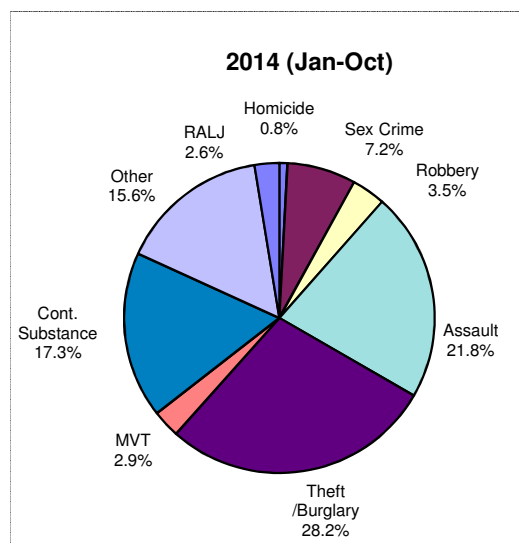
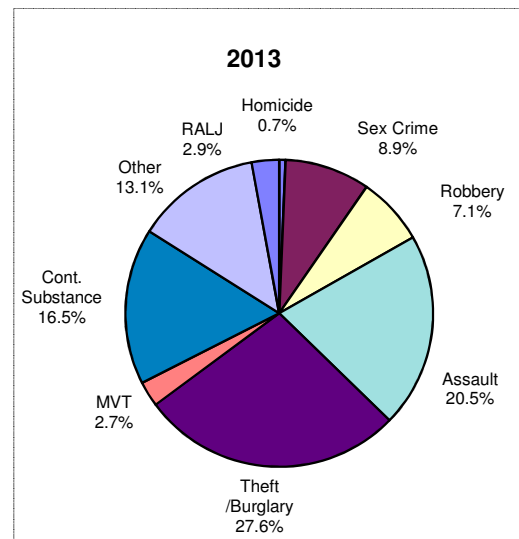
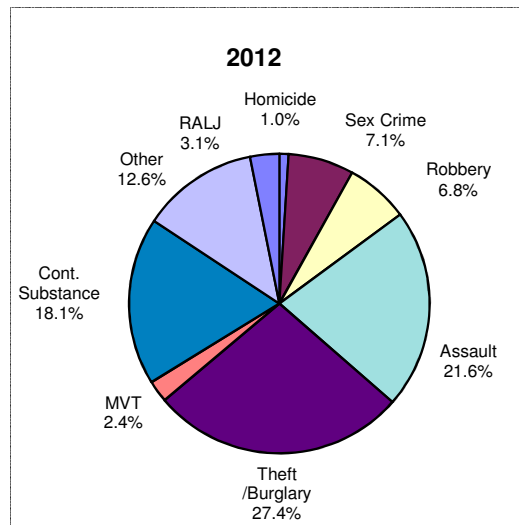


Table 1. Monthly Criminal New Filings by Crime Category <sup>(\*)</sup>  
King County Superior Court

	Jan	Feb	Mar	Apr	May	Jun	Jul	Aug	Sep	Oct	Nov	Dec	ADJ <sup>(1)</sup>	Annual
<b>Total</b>														
2011	576	513	620	518	525	492	486	590	491	409	478	478	(+2)	6178
2012	445	522	618	512	576	544	555	543	458	507	410	443	(+2)	6135
2013	514	492	524	536	545	462	502	540	462	597	482	568	(+2)	6226
2014 <sup>(2)</sup>	512	514	604	623	551	449	518	506	487	590				
<b>Homicide</b>														
2011	3	3	2	1	3	5	3	4	2	3	2	7	(0)	38
2012	4	2	7	4	7	2	7	7	7	3	6	4	(+2)	62
2013	3	2	5	3	2	2	4	3	6	6	0	5	(+1)	42
2014 <sup>(2)</sup>	3	2	9	4	4	4	11	5	2	1				
<b>Sex Crime</b>														
2011	34	32	22	36	23	28	23	30	22	28	26	52	(0)	356
2012	34	49	34	60	40	22	38	47	33	20	30	27	(+1)	435
2013	45	39	79	54	49	27	54	43	19	38	59	51	(+6)	563
2014 <sup>(2)</sup>	37	38	52	42	24	36	37	30	49	38				
<b>Robbery</b>														
2011	50	27	58	29	25	35	23	36	30	34	36	35	(0)	418
2012	33	38	57	19	50	32	17	32	36	47	24	33	(+1)	419
2013	44	36	33	33	31	40	27	41	48	49	29	34	(+7)	452
2014 <sup>(2)</sup>	50	28	26	13	11	9	12	9	14	16				
<b>Aggravated Assault</b>														
2010	105	84	139	105	108	126	126	117	118	98	101	116	(0)	1343
2011	91	95	110	104	118	121	115	123	114	124	106	101	(+14)	1336
2012	103	116	102	121	119	76	122	98	103	104	110	104	(+24)	1302
2013 <sup>(2)</sup>	128	109	137	109	113	116	130	121	100	106				
<b>Burglary/Theft /Larceny</b>														
2011	147	124	141	114	141	100	119	140	107	86	92	122	(1)	1434
2012	141	134	178	160	156	121	175	144	119	114	106	133	(+13)	1694
2013	139	127	138	162	147	144	148	147	130	167	110	157	(+10)	1726
2014 <sup>(2)</sup>	122	140	162	182	167	109	132	145	148	205				
<b>Motor Vehicle Theft</b>														
2011	14	20	12	9	5	9	12	18	12	10	13	11	(0)	145
2012	18	19	15	5	13	7	10	19	11	10	7	12	(-6)	140
2013	17	14	12	15	11	9	16	10	17	19	9	16	(-3)	162
2014 <sup>(2)</sup>	13	15	24	23	19	10	16	6	13	16				
<b>Controlled Substance</b>														
2011	120	108	107	99	104	97	65	120	100	82	99	67	(1)	1169
2012	57	102	147	88	93	152	116	85	75	90	53	51	(-1)	1108
2013	88	69	82	62	95	94	66	86	58	130	82	112	(0)	1024
2014 <sup>(2)</sup>	74	87	116	142	104	80	68	84	74	99				
<b>Other</b>														
2011	83	97	123	110	97	71	99	108	84	57	99	56	(0)	1084
2012	51	64	58	61	80	70	65	65	53	74	64	66	(-22)	749
2013	61	77	59	72	71	56	55	88	71	70	70	68	(-44)	774
2014 <sup>(2)</sup>	73	77	65	98	100	71	99	85	75	93				
<b>Criminal RALJ</b>														
2011	20	18	16	15	19	21	16	17	16	11	10	12	(0)	191
2012	16	19	12	11	19	17	12	21	10	25	14	16	(0)	192
2013	14	12	14	14	20	14	10	24	10	14	13	21	(+1)	181
2014 <sup>(2)</sup>	12	18	13	10	9	14	13	21	12	16				
<b>KNT Filing as % of Total</b>														
2011	40%	42%	46%	43%	44%	45%	44%	41%	43%	47%	41%	47%		44%
2012	41%	41%	39%	40%	43%	39%	43%	45%	41%	45%	47%	47%		42%
2013	43%	46%	44%	46%	46%	39%	41%	35%	43%	41%	38%	37%		42%
2014 <sup>(2)</sup>	46%	47%	48%	47%	46%	44%	43%	46%	43%	50%				

(\*) The highest crime category in a case's history is used to classify cases. For example, a case charged with homicide at any time in the case's history is reported as a homicide regardless of whether the charge is reduced at resolution.

(1) "ADJ" = year-end adjustment.

(2) Reflects all documents received by 11/15/2014.

Table 2. Monthly Criminal Case Resolutions by Crime Category  
King County Superior Court

	Jan	Feb	Mar	Apr	May	Jun	Jul	Aug	Sep	Oct	Nov	Dec	ADJ <sup>(1)</sup>	Annual
<b>Total</b>														
2011	590	546	595	560	536	549	514	547	508	552	514	446	(+16)	6463
2012	388	447	520	502	501	521	481	492	438	558	470	446	(+18)	5782
2013	552	484	546	478	533	422	526	551	496	538	418	462	(+13)	6019
2014 <sup>(2)</sup>	495	495	528	490	513	486	584	474	523	605				
<b>Homicide</b>														
2011	5	6	3	5	4	3	2	5	3	8	4	1	(0)	49
2012	1	5	2	6	3	5	4	1	5	2	2	5	(0)	41
2013	3	3	3	5	10	7	3	4	2	8	4	8	(+1)	61
2014 <sup>(2)</sup>	2	5	6	6	3	1	3	2	5	2				
<b>Sex Crime</b>														
2011	30	42	21	21	18	19	31	30	36	31	24	41	(+2)	346
2012	37	27	37	39	33	38	33	47	31	56	28	25	(+4)	435
2013	34	39	39	47	43	36	33	54	45	47	29	27	(0)	473
2014 <sup>(2)</sup>	40	47	40	36	50	34	39	34	36	42				
<b>Robbery</b>														
2011	39	38	45	39	33	40	34	31	31	29	34	36	(-1)	428
2012	31	42	34	38	32	52	33	37	29	33	27	25	(0)	413
2013	42	30	40	32	36	38	38	35	45	29	39	28	(+1)	433
2014 <sup>(2)</sup>	43	41	41	24	24	17	26	25	15	14				
<b>Aggravated Assault</b>														
2010	117	123	131	121	117	100	107	119	129	133	127	98	(+2)	1424
2011	74	96	137	111	126	99	108	85	94	123	128	107	(+3)	1291
2012	102	109	132	98	127	86	120	108	97	138	89	83	(0)	1289
2013 <sup>(2)</sup>	101	103	113	112	104	107	125	119	103	153				
<b>Burglary/Theft /Larceny</b>														
2011	122	120	128	129	150	135	112	131	106	151	125	105	(+1)	1515
2012	81	116	112	132	124	134	133	141	100	132	103	115	(+3)	1426
2013	148	135	137	113	137	106	148	149	136	124	109	127	(+11)	1580
2014 <sup>(2)</sup>	123	133	150	125	141	122	171	126	171	149				
<b>Motor Vehicle Theft</b>														
2011	16	10	14	13	12	7	13	9	10	10	9	10	(0)	133
2012	12	8	13	14	20	7	7	17	11	11	9	8	(+1)	138
2013	15	7	13	12	14	8	13	9	13	14	8	6	(0)	132
2014 <sup>(2)</sup>	14	16	8	16	15	28	11	11	13	16				
<b>Controlled Substance - Non Drug Court</b>														
2011	101	82	111	97	77	102	89	113	78	81	78	74	(+8)	1088
2012	69	67	79	76	81	71	81	79	82	93	57	78	(+11)	916
2013	104	61	70	64	75	46	70	74	71	62	49	81	(-2)	825
2014 <sup>(2)</sup>	69	62	74	72	65	73	86	70	81	94				
<b>Drug Court</b>														
2011	29	20	21	21	9	16	23	13	15	15	27	6	(0)	218
2012	22	11	21	16	10	22	14	16	17	22	23	2	(0)	204
2013	21	21	30	27	18	20	24	29	20	27	12	8	(0)	261
2014 <sup>(2)</sup>	20	25	14	15	17	22	20	18	14	21				
<b>Other</b>														
2011	111	91	105	100	104	107	88	81	83	80	72	57	(-4)	1075
2012	45	62	68	60	53	76	54	55	51	73	69	67	(-1)	732
2013	70	66	70	65	62	56	61	71	55	77	59	72	(-5)	786
2014 <sup>(2)</sup>	66	54	67	73	75	64	87	57	72	97				
<b>Criminal RALJ</b>														
2011	20	14	16	14	12	20	15	15	17	14	14	18	(-2)	187
2012	16	13	17	10	19	17	14	14	18	13	24	14	(-3)	186
2013	13	13	12	15	11	19	16	18	12	12	20	22	(-4)	179
2014 <sup>(2)</sup>	17	9	15	11	19	18	16	12	13	17				
<b>KNT Filing as % of Total</b>														
2011	38%	34%	37%	40%	40%	33%	34%	40%	42%	40%	41%	38%		38%
2012	41%	45%	44%	41%	43%	46%	39%	43%	44%	39%	42%	41%		42%
2013	44%	40%	46%	44%	45%	38%	41%	49%	42%	38%	41%	41%		42%
2014 <sup>(2)</sup>	38%	45%	40%	40%	42%	49%	44%	46%	49%	44%				

The highest crime category in a case's history is used to classify cases. For example, a case charged with homicide at any time in the case's history is reported as a homicide regardless of whether the charge is reduced at resolution.

- (1) "ADJ" = year-end adjustment.
- (2) Reflects all documents received by 11/15/2014.
- (3) "Controlled Substance - Non Drug Court" are drug related cases that have never been accepted into drug court.
- (4) "Controlled Substance - Drug Court" are drug related cases that have been formally accepted into drug court (identified by "Order of Participation").

Table 3. Number of Cases Resolved and Resolution Category  
King County Superior Court

Crime Category <sup>(*)</sup>	Nov 2013	Dec 2013	Jan 2014	Feb 2014	Mar 2014	Apr 2014	May 2014	Jun 2014	Jul 2014	Aug 2014	Sep 2014	Oct 2014
<b>Homicide</b>	<b>4</b>	<b>8</b>	<b>2</b>	<b>5</b>	<b>6</b>	<b>6</b>	<b>3</b>	<b>1</b>	<b>3</b>	<b>2</b>	<b>5</b>	<b>2</b>
Resolved by Jury Trial	2	3	0	0	0	2	0	0	1	1	0	2
Resolved by Non-Jury Trial	0	0	1	0	0	0	0	0	0	0	0	0
Resolved by Guilty Plea	2	5	1	5	6	4	3	1	2	1	5	0
Dismissal	0	0	0	0	0	0	0	0	0	0	0	0
Others	0	0	0	0	0	0	0	0	0	0	0	0
<b>Sex Crime</b>	<b>29</b>	<b>27</b>	<b>40</b>	<b>47</b>	<b>40</b>	<b>36</b>	<b>50</b>	<b>34</b>	<b>39</b>	<b>34</b>	<b>36</b>	<b>42</b>
Resolved by Jury Trial	3	2	3	4	5	2	3	2	4	2	2	3
Resolved by Non-Jury Trial	0	0	0	0	1	0	0	0	0	1	0	1
Resolved by Guilty Plea	24	22	33	38	32	28	42	29	32	26	28	35
Dismissal	2	3	4	4	2	6	5	3	3	5	6	3
Others	0	0	0	1	0	0	0	0	0	0	0	0
<b>Robbery</b>	<b>39</b>	<b>28</b>	<b>43</b>	<b>41</b>	<b>41</b>	<b>24</b>	<b>24</b>	<b>17</b>	<b>26</b>	<b>25</b>	<b>15</b>	<b>14</b>
Resolved by Jury Trial	1	2	1	5	4	2	0	2	0	0	0	1
Resolved by Non-Jury Trial	0	0	0	0	0	0	0	0	0	0	0	0
Resolved by Guilty Plea	31	23	40	30	33	11	21	11	24	21	14	11
Dismissal	7	2	2	6	4	11	3	4	2	4	1	2
Others	0	1	0	0	0	0	0	0	0	0	0	0
<b>Aggravated Assault</b>	<b>89</b>	<b>83</b>	<b>101</b>	<b>103</b>	<b>113</b>	<b>112</b>	<b>104</b>	<b>107</b>	<b>125</b>	<b>119</b>	<b>103</b>	<b>153</b>
Resolved by Jury Trial	4	8	5	5	6	2	7	7	8	5	6	5
Resolved by Non-Jury Trial	0	0	0	0	0	1	0	1	0	1	0	1
Resolved by Guilty Plea	74	64	81	81	94	85	87	84	97	97	88	122
Dismissal	11	11	14	17	13	24	10	14	20	16	9	25
Others	0	0	1	0	0	0	0	1	0	0	0	0
<b>Burglary/Theft/Larceny</b>	<b>109</b>	<b>127</b>	<b>123</b>	<b>133</b>	<b>150</b>	<b>125</b>	<b>141</b>	<b>122</b>	<b>171</b>	<b>126</b>	<b>171</b>	<b>149</b>
Resolved by Jury Trial	4	5	2	3	3	4	5	4	6	2	2	3
Resolved by Non-Jury Trial	0	0	0	0	0	0	0	0	2	0	1	0
Resolved by Guilty Plea	94	109	103	114	131	107	117	108	151	114	151	130
Dismissal	11	13	18	16	16	14	19	10	12	10	17	16
Others	0	0	0	0	0	0	0	0	0	0	0	0
<b>Motor Vehicle Theft</b>	<b>8</b>	<b>6</b>	<b>14</b>	<b>16</b>	<b>8</b>	<b>16</b>	<b>15</b>	<b>28</b>	<b>11</b>	<b>11</b>	<b>13</b>	<b>16</b>
Resolved by Jury Trial	0	0	0	0	1	0	0	1	0	0	0	0
Resolved by Non-Jury Trial	0	0	0	0	0	0	0	0	0	0	0	0
Resolved by Guilty Plea	7	4	14	12	7	10	10	26	10	8	13	11
Dismissal	1	2	0	4	0	6	5	1	1	3	0	5
Others	0	0	0	0	0	0	0	0	0	0	0	0
<b>Controlled Substance - Non Drug Court<sup>(1)</sup></b>	<b>49</b>	<b>81</b>	<b>69</b>	<b>62</b>	<b>74</b>	<b>72</b>	<b>65</b>	<b>73</b>	<b>86</b>	<b>70</b>	<b>81</b>	<b>94</b>
Resolved by Jury Trial	0	0	1	0	3	0	1	2	2	1	0	0
Resolved by Non-Jury Trial	0	0	0	0	0	0	0	2	0	1	0	3
Resolved by Guilty Plea	42	68	54	58	58	64	50	56	68	59	69	82
Dismissal	7	13	14	4	13	8	14	13	16	9	12	9
Others	0	0	0	0	0	0	0	0	0	0	0	0
<b>Drug Court<sup>(2)</sup></b>	<b>12</b>	<b>8</b>	<b>20</b>	<b>25</b>	<b>14</b>	<b>15</b>	<b>17</b>	<b>22</b>	<b>20</b>	<b>18</b>	<b>14</b>	<b>21</b>
Resolved by Non-Jury Trial	1	8	6	5	1	4	5	6	1	8	0	11
Resolved by Guilty Plea	1	1	0	2	1	1	1	1	0	0	1	5
Dismissal	10	0	14	18	12	10	11	15	19	10	13	5
Others	0	0	0	0	0	0	0	0	0	0	0	0
<b>Other</b>	<b>59</b>	<b>72</b>	<b>66</b>	<b>54</b>	<b>67</b>	<b>73</b>	<b>75</b>	<b>64</b>	<b>87</b>	<b>57</b>	<b>72</b>	<b>97</b>
Resolved by Jury Trial	1	0	4	1	2	4	2	3	4	2	1	4
Resolved by Non-Jury Trial	0	0	0	0	0	0	0	0	0	0	0	2
Resolved by Guilty Plea	46	48	43	43	49	53	57	45	66	42	54	67
Dismissal	12	23	17	10	16	15	16	15	16	10	17	23
Others	0	1	2	0	0	1	0	1	0	3	0	1
<b>Criminal RALJ</b>	<b>20</b>	<b>22</b>	<b>17</b>	<b>9</b>	<b>15</b>	<b>11</b>	<b>19</b>	<b>18</b>	<b>16</b>	<b>12</b>	<b>13</b>	<b>17</b>
RALJ Decision	15	10	13	6	11	8	13	14	9	7	7	14
Dismissal	4	11	4	2	4	2	6	4	7	3	5	3
Others	1	1	0	1	0	1	0	0	0	2	1	0

(\*) The highest crime category in a case's history is used to classify cases.

Reflects all documents received by 11/15/2014.

(1) "Controlled Substance - Non Drug Court" are drug related cases that have never been accepted into drug court.

(2) "Controlled Substance - Drug Court" are drug related cases that have been formally accepted into drug court (identified by "Order of Participation").

(3) DV Subset includes cases with a DV flag in at least one of the charges within the specific crime category at the time of the reporting.

Table 4. Age (days) of Resolved Cases  
King County Superior Court

Crime Category <sup>(*)</sup>	Nov 2013	Dec 2013	Jan 2014	Feb 2014	Mar 2014	Apr 2014	May 2014	Jun 2014	Jul 2014	Aug 2014	Sep 2014	Oct 2014
<b>Homicide <sup>(**)</sup></b>												
50% Cases Resolved by Day	511	295	464	241	544	626	289	519	722	447	297	1254
90% Cases Resolved by Day	851	1086	643	455	1782	1117	836	519	777	686	375	1731
Average Time (days)	559	390	464	257	687	611	457	519	530	447	301	1254
<b>Sex Crime</b>												
50% Cases Resolved by Day	180	276	144	142	175	120	157	167	134	167	160	145
90% Cases Resolved by Day	533	652	330	618	783	347	459	318	405	548	395	525
Average Time (days)	201	316	186	234	265	166	218	185	193	234	180	213
<b>Robbery</b>												
50% Cases Resolved by Day	140	109	99	137	94	89	160	139	174	148	79	140
90% Cases Resolved by Day	273	318	284	318	195	270	350	309	299	281	502	260
Average Time (days)	146	157	137	168	125	118	181	152	157	184	151	187
<b>Aggravated Assault</b>												
50% Cases Resolved by Day	96	91	101	108	83	91	119	106	100	98	91	116
90% Cases Resolved by Day	265	262	269	287	329	270	316	335	296	289	273	263
Average Time (days)	141	140	132	143	125	147	162	146	151	133	129	143
<b>Burglary/Theft/Larceny</b>												
50% Cases Resolved by Day	105	120	119	113	129	104	116	111	100	126	116	101
90% Cases Resolved by Day	352	251	384	405	267	275	311	294	264	308	281	279
Average Time (days)	149	141	167	172	146	139	330	141	128	146	147	141
<b>Motor Vehicle Theft</b>												
50% Cases Resolved by Day	127	68	109	177	116	108	125	91	69	127	64	125
90% Cases Resolved by Day	498	132	281	384	516	388	262	277	141	193	114	235
Average Time (days)	178	62	136	203	150	139	138	121	84	121	74	129
<b>Controlled Substance</b>												
50% Cases Resolved by Day	121	101	118	106	115	112	143	105	106	116	138	128
90% Cases Resolved by Day	267	247	322	287	274	320	299	254	258	285	317	309
Average Time (days)	144	130	153	146	143	150	165	137	130	138	159	167
<b>Drug Court <sup>(2)</sup></b>												
50% Cases Resolved by Day	602	601	599	643	545	521	478	537	589	551	540	475
90% Cases Resolved by Day	608	1045	899	889	748	1038	1099	833	840	1030	1216	841
Average Time (days)	516	616	602	663	535	595	544	589	617	574	735	533
<b>Other</b>												
50% Cases Resolved by Day	74	64	109	131	91	106	96	115	113	124	95	103
90% Cases Resolved by Day	245	246	323	295	268	267	312	341	310	234	214	293
Average Time (days)	111	116	146	151	116	122	143	159	143	137	217	144
<b>Criminal RALJ</b>												
50% Cases Resolved by Day	321	220	249	318	273	304	270	281	225	253	219	239
90% Cases Resolved by Day	470	451	340	502	371	482	577	476	345	353	354	350
Average Time (days)	325	264	255	311	277	513	303	304	260	279	238	261

(\*) The highest crime category in a case's history is used to classify cases. For example, a case charged with homicide at any time during the case's history is reported as a homicide regardless of whether the charge is reduced at resolution.

(\*\*) Due to small number of resolutions in this category, the age statistics for homicides are expected to vary considerably.

Reflects all documents received by **11/15/2014**.

(1) "Controlled Substance - Non Drug Court" are drug related cases that have never been accepted into drug court.

(2) "Controlled Substance - Drug Court" are drug related cases that have been formally accepted into drug court (identified by "Order of Participation").

(3) DV Subset includes cases with a DV flag in at least one of the charges within the specific crime category at the time of the reporting.



Table 5. Pending Criminal Cases  
King County Superior Court

Crime Category (*)	Oct 2013	Nov 2013	Dec 2013	Jan 2014	Feb 2014	Mar 2014	Apr 2014	May 2014	Jun 2014	Jul 2014	Aug 2014	Sep 2014	Oct 2014
<b>Total</b>													
Previous Pending	2899	2914	2914	3008	2954	3001	3029	3112	3150	3099	3028	3060	3061
New Filing (+)	597	482	568	512	514	604	623	551	449	518	506	487	590
Resolved (-)	538	418	462	495	495	528	490	513	486	584	474	523	605
<b>End Pending</b>	<b>2914</b>	<b>2914</b>	<b>3008</b>	<b>2954</b>	<b>3001</b>	<b>3029</b>	<b>3112</b>	<b>3150</b>	<b>3099</b>	<b>3028</b>	<b>3060</b>	<b>3061</b>	<b>3019</b>
<b>Homicide</b>													
Previous Pending	66	62	60	62	63	59	60	61	61	66	73	73	67
New Filing (+)	6	0	5	3	2	9	4	4	4	11	5	2	1
Resolved (-)	8	4	8	2	5	6	6	3	1	3	2	5	2
<b>End Pending</b>	<b>62</b>	<b>60</b>	<b>62</b>	<b>63</b>	<b>59</b>	<b>60</b>	<b>61</b>	<b>61</b>	<b>66</b>	<b>73</b>	<b>71</b>	<b>67</b>	<b>65</b>
<b>Sex Crime</b>													
Previous Pending	280	268	275	295	289	283	283	286	273	267	267	263	259
New Filing (+)	38	59	51	37	38	52	42	24	36	37	30	49	38
Resolved (-)	47	29	27	40	47	40	36	50	34	39	34	36	42
<b>End Pending</b>	<b>268</b>	<b>275</b>	<b>295</b>	<b>289</b>	<b>283</b>	<b>283</b>	<b>286</b>	<b>273</b>	<b>267</b>	<b>267</b>	<b>263</b>	<b>259</b>	<b>252</b>
<b>Robbery</b>													
Previous Pending	181	192	188	194	197	190	182	166	147	137	121	91	88
New Filing (+)	49	29	34	50	28	26	13	11	9	12	9	14	16
Resolved (-)	29	39	28	43	41	41	24	24	17	26	25	15	14
<b>End Pending</b>	<b>192</b>	<b>188</b>	<b>194</b>	<b>197</b>	<b>190</b>	<b>182</b>	<b>166</b>	<b>147</b>	<b>137</b>	<b>121</b>	<b>91</b>	<b>88</b>	<b>87</b>
<b>Aggravated Assault</b>													
Previous Pending	506	466	472	502	507	516	536	537	548	560	555	549	569
New Filing (+)	104	110	104	128	109	137	109	113	116	130	121	100	106
Resolved (-)	138	89	83	101	103	113	112	104	107	125	119	103	153
<b>End Pending</b>	<b>466</b>	<b>472</b>	<b>502</b>	<b>507</b>	<b>516</b>	<b>536</b>	<b>537</b>	<b>548</b>	<b>560</b>	<b>555</b>	<b>549</b>	<b>569</b>	<b>523</b>
<b>Burglary/Theft/Larceny</b>													
Previous Pending	702	721	717	732	693	695	705	728	748	717	700	726	705
New Filing (+)	167	110	157	122	140	162	182	167	109	132	145	148	205
Resolved (-)	124	109	127	123	133	150	125	141	122	171	126	171	149
<b>End Pending</b>	<b>721</b>	<b>717</b>	<b>732</b>	<b>693</b>	<b>695</b>	<b>705</b>	<b>728</b>	<b>748</b>	<b>717</b>	<b>700</b>	<b>726</b>	<b>705</b>	<b>720</b>
<b>Motor Vehicle Theft</b>													
Previous Pending	64	65	60	69	64	68	79	85	88	69	72	72	73
New Filing (+)	19	9	16	13	15	24	23	19	10	16	6	13	16
Resolved (-)	14	8	6	14	16	8	16	15	28	11	11	14	16
<b>End Pending</b>	<b>65</b>	<b>60</b>	<b>69</b>	<b>64</b>	<b>68</b>	<b>79</b>	<b>85</b>	<b>88</b>	<b>69</b>	<b>72</b>	<b>72</b>	<b>73</b>	<b>70</b>
<b>Controlled Substance - Non Drug Court (1)</b>													
Previous Pending	373	423	429	446	454	464	463	498	516	507	465	475	466
Resolved (-)	62	49	81	69	62	74	72	65	73	86	70	81	94
<b>End Pending</b>	<b>423</b>	<b>429</b>	<b>446</b>	<b>454</b>	<b>464</b>	<b>463</b>	<b>498</b>	<b>516</b>	<b>507</b>	<b>465</b>	<b>475</b>	<b>466</b>	<b>466</b>
<b>Drug Court (2)</b>													
Previous Pending	239	232	239	228	226	235	241	241	240	252	252	256	268
New Filing (+)	15	19	7	15	31	21	24	4	22	24	14	20	20
Resolved (-)	27	12	8	20	25	14	15	17	22	20	18	14	21
<b>End Pending</b>	<b>232</b>	<b>239</b>	<b>228</b>	<b>226</b>	<b>235</b>	<b>241</b>	<b>246</b>	<b>240</b>	<b>252</b>	<b>252</b>	<b>256</b>	<b>268</b>	<b>268</b>
<b>Other</b>													
Previous Pending	341	334	330	337	323	344	334	359	391	391	394	418	428
New Filing (+)	70	70	68	73	77	65	98	100	71	99	85	75	93
Resolved (-)	77	59	72	66	54	67	73	75	64	87	57	72	97
<b>End Pending</b>	<b>334</b>	<b>330</b>	<b>337</b>	<b>323</b>	<b>344</b>	<b>334</b>	<b>359</b>	<b>391</b>	<b>391</b>	<b>394</b>	<b>418</b>	<b>428</b>	<b>431</b>
<b>Criminal RALJ</b>													
Previous Pending	147	151	144	143	138	147	146	146	138	133	129	139	138
New Filing (+)	14	13	21	12	18	13	10	9	14	13	21	12	16
Resolved (-)	12	20	22	17	9	15	11	19	18	16	12	13	17
<b>End Pending</b>	<b>151</b>	<b>144</b>	<b>143</b>	<b>138</b>	<b>147</b>	<b>146</b>	<b>146</b>	<b>138</b>	<b>133</b>	<b>129</b>	<b>139</b>	<b>138</b>	<b>137</b>
<b>Total Pending Caseload</b>													
SEA (%)	54%	55%	56%	55%	55%	53%	53%	51%	52%	51%	52%	52%	51%
KNT (%)	46%	45%	44%	45%	45%	47%	47%	49%	48%	49%	48%	48%	49%

(\*) Information from filing to the reporting time is used to determine crime category for pending cases. The category for a case in this table is the highest crime category since filing. For example, a case initially charged with homicide is reported as a homicide regardless of whether or not the charge is reduced since filing. On the other hand, if the charge for a case is upgraded later, then the reporting category in later reports will reflect the upgraded (higher) crime category.

Reflects all documents received by 11/15/2014. Drug court cases are identified by docket code "ORPAR" (Order for Participation).

Table 6. Age of Pending Criminal Cases  
King County Superior Court

Crime Category (*)	Oct 2013	Nov 2013	Dec 2013	Jan 2014	Feb 2014	Mar 2014	Apr 2014	May 2014	Jun 2014	Jul 2014	Aug 2014	Sep 2014	Oct 2014
<b>Total</b>													
<b>Age (days)</b>													
Median (50 <sup>th</sup> percentile)	112	116	113	117	113	111	107	103	110	114	118	121	114
95 <sup>th</sup> percentile	738	759	755	758	730	728	719	725	735	746	759	765	760
<b># of Cases in Age Interval</b>													
0 - 60 days (0 - 2 months)	941	878	901	882	946	997	1043	1022	919	903	895	885	930
61-120 days (3 - 4 months)	576	618	674	628	614	614	623	694	765	667	659	640	621
121-180 days (5 - 6 months)	406	398	394	423	429	401	410	417	409	461	481	455	415
181-270 days (7 - 9 months)	375	372	365	361	359	359	387	357	358	353	370	406	386
> 270 days (> 9 months)	616	648	674	660	653	658	649	660	648	644	655	675	667
<b>Homicide</b>													
<b>Age (days)</b>													
Median (50 <sup>th</sup> percentile)	321	315	324	355	380	252	239	237	235	233	244	215	240
95 <sup>th</sup> percentile	899	958	1148	1179	1076	1047	1074	1105	1135	1360	1391	1421	1240
<b># of Cases in Age Interval</b>													
0 - 60 days (0 - 2 months)	9	7	9	6	3	10	14	8	9	15	10	6	4
61-120 days (3 - 4 months)	7	9	9	8	9	5	4	10	13	7	9	13	9
121-180 days (5 - 6 months)	2	4	6	8	8	7	7	6	4	9	13	6	7
181-270 days (7 - 9 months)	8	5	3	5	6	10	9	9	11	10	7	11	15
> 270 days (> 9 months)	36	35	35	36	33	28	27	28	29	32	32	31	30
<b>Sex Crime</b>													
<b>Age (days)</b>													
Median (50 <sup>th</sup> percentile)	163	149	142	156	144	144	147	142	137	148	154	155	138
95 <sup>th</sup> percentile	694	671	664	695	708	691	622	750	683	714	735	775	796
<b># of Cases in Age Interval</b>													
0 - 60 days (0 - 2 months)	54	66	73	72	71	76	76	71	63	70	60	58	68
61-120 days (3 - 4 months)	55	47	53	55	54	49	50	52	60	43	47	55	48
121-180 days (5 - 6 months)	39	36	50	37	36	45	42	35	35	46	43	30	32
181-270 days (7 - 9 months)	55	55	41	45	44	41	39	42	39	38	45	43	40
> 270 days (> 9 months)	65	71	78	80	78	72	79	73	70	70	68	73	64
<b>Robbery</b>													
<b>Age (days)</b>													
Median (50 <sup>th</sup> percentile)	71	82	92	89	81	85	105	129	141	151	173	197	179
95 <sup>th</sup> percentile	465	495	484	465	493	524	604	635	707	696	769	799	788
<b># of Cases in Age Interval</b>													
0 - 60 days (0 - 2 months)	90	65	62	73	79	57	48	28	24	26	19	15	28
61-120 days (3 - 4 months)	30	55	69	47	36	56	51	40	35	20	12	13	12
121-180 days (5 - 6 months)	32	27	16	36	35	23	21	36	34	29	15	13	5
181-270 days (7 - 9 months)	16	17	23	19	16	18	21	17	18	23	25	25	15
> 270 days (> 9 months)	24	24	24	22	24	28	25	26	26	23	20	22	27
<b>Aggravated Assault</b>													
<b>Age (days)</b>													
Median (50 <sup>th</sup> percentile)	86	88	89	88	82	82	84	85	90	92	91	97	87
95 <sup>th</sup> percentile	659	559	531	544	572	602	581	488	514	483	487	505	535
<b># of Cases in Age Interval</b>													
0 - 60 days (0 - 2 months)	182	172	185	192	218	215	214	199	205	213	194	205	191
61-120 days (3 - 4 months)	106	116	120	116	103	115	120	144	150	124	132	130	121
121-180 days (5 - 6 months)	58	59	72	77	67	73	67	71	74	88	89	81	73
181-270 days (7 - 9 months)	56	51	51	46	50	61	64	62	58	57	62	82	67
> 270 days (> 9 months)	64	74	74	76	78	72	72	72	73	73	72	71	71
<b>Burglary/Theft/Larceny</b>													
<b>Age (days)</b>													
Median (50 <sup>th</sup> percentile)	90	97	99	108	96	91	83	86	95	100	103	88	86
95 <sup>th</sup> percentile	540	566	551	565	512	528	545	565	595	615	585	615	623
<b># of Cases in Age Interval</b>													
0 - 60 days (0 - 2 months)	268	234	231	223	244	270	288	274	239	223	261	251	272
121-180 days (5 - 6 months)	167	182	198	155	149	162	159	190	197	174	166	153	178
61-120 days (3 - 4 months)	108	114	100	110	119	82	90	105	101	115	112	111	92
181-270 days (7 - 9 months)	72	75	89	93	81	79	84	69	64	72	77	82	67
> 270 days (> 9 months)	106	112	114	112	102	112	107	110	116	116	110	108	111

(\*) The highest crime category since filing is used to classify cases. For example, a case initially charged with homicide is reported as a homicide regardless of whether or not the charge is reduced since filing. On the other hand, if the charge for a case is upgraded later, then the reporting category in later reports will reflect the upgraded (higher) crime category.

Reflects all documents received by 11/15/2014.

(1) "Controlled Substance - Non Drug Court" are drug related cases that have never been accepted into drug court.

(2) "Controlled Substance - Drug Court" are drug related cases that have been formally accepted into drug court (identified by "Order of Participation").

Table 6 (cont.). Age of Pending Criminal Cases  
King County Superior Court

Crime Category (*)	Oct 2013	Nov 2013	Dec 2013	Jan 2014	Feb 2014	Mar 2014	Apr 2014	May 2014	Jun 2014	Jul 2014	Aug 2014	Sep 2014	Oct 2014
<b>Motor Vehicle Theft</b>													
<b>Age (days)</b>													
Median (50 <sup>th</sup> percentile)	91	91	98	98	83	61	69	64	84	85	89	120	121
95 <sup>th</sup> percentile	485	462	432	463	387	379	287	318	348	379	337	367	398
<b># of Cases in Age Interval</b>													
0 - 60 days (0 - 2 months)	27	22	21	23	28	39	38	43	26	28	27	20	21
61-120 days (3 - 4 months)	14	12	17	13	17	17	22	23	25	20	19	17	14
121-180 days (5 - 6 months)	6	12	13	7	10	10	13	11	7	11	12	15	15
181-270 days (7 - 9 months)	10	5	5	9	6	8	7	5	6	8	8	13	9
> 270 days (> 9 months)	8	9	13	12	7	5	5	6	5	5	6	8	11
<b>Controlled Substance - Non Drug Court<sup>(1)</sup></b>													
<b>Age (days)</b>													
Median (50 <sup>th</sup> percentile)	88	89	82	93	95	99	82	77	81	98	104	105	95
95 <sup>th</sup> percentile	735	765	780	758	681	712	708	684	681	745	776	806	837
<b># of Cases in Age Interval</b>													
0 - 60 days (0 - 2 months)	165	175	166	158	149	163	205	217	183	151	137	163	166
61-120 days (3 - 4 months)	87	83	104	127	126	108	97	107	146	141	129	103	97
121-180 days (5 - 6 months)	64	61	57	55	62	75	78	67	56	56	91	85	78
181-270 days (7 - 9 months)	47	42	45	45	58	43	48	52	59	48	41	40	57
> 270 days (> 9 months)	60	68	74	69	69	74	70	73	63	69	77	75	68
<b>Drug Court<sup>(2)</sup></b>													
<b>Age (days)</b>													
Median (50 <sup>th</sup> percentile)	408	394	424	403	389	399	393	413	371	351	354	357	360
95 <sup>th</sup> percentile	1002	1032	1113	1094	1038	1056	1084	1110	998	1029	1032	1034	1060
<b># of Cases in Age Interval</b>													
0 - 60 days (0 - 2 months)	0	0	1	1	2	1	4	0	1	0	0	1	3
61-120 days (3 - 4 months)	8	8	5	6	8	8	9	8	21	13	7	5	4
121-180 days (5 - 6 months)	18	20	14	12	18	23	16	16	20	26	34	28	16
181-270 days (7 - 9 months)	38	35	30	34	31	32	44	40	39	45	41	49	59
> 270 days (> 9 months)	168	176	178	173	176	177	173	176	171	168	174	185	186
<b>Other</b>													
<b>Age (days)</b>													
Median (50 <sup>th</sup> percentile)	98	103	103	102	90	96	84	85	83	79	90	91	95
95 <sup>th</sup> percentile	808	838	834	865	892	924	951	809	879	829	795	825	793
<b># of Cases in Age Interval</b>													
0 - 60 days (0 - 2 months)	122	112	119	101	122	135	133	164	146	150	154	135	149
61-120 days (3 - 4 months)	69	71	75	76	79	61	81	89	96	108	114	127	106
121-180 days (5 - 6 months)	46	41	38	53	50	40	44	40	49	50	53	66	74
181-270 days (7 - 9 months)	41	50	46	36	32	36	37	33	32	27	33	32	36
> 270 days (> 9 months)	56	56	59	57	61	62	64	65	68	59	32	68	66
<b>Criminal RALJ</b>													
<b>Age (days)</b>													
Median (50 <sup>th</sup> percentile)	162	165	141	150	145	147	149	169	169	162	166	154	144
95 <sup>th</sup> percentile	414	383	391	422	380	400	430	458	410	438	469	499	530
<b># of Cases in Age Interval</b>													
0 - 60 days (0 - 2 months)	24	25	34	33	30	31	23	18	23	27	33	31	28
61-120 days (3 - 4 months)	33	35	24	25	33	33	30	31	22	17	24	24	32
121-180 days (5 - 6 months)	33	24	28	28	24	23	32	30	29	31	19	20	23
181-270 days (7 - 9 months)	32	37	32	29	35	31	34	28	32	25	31	29	21
> 270 days (> 9 months)	29	23	25	23	25	28	27	31	27	29	32	34	33

(\*) The highest crime category since filing is used to classify cases. For example, a case initially charged with homicide is reported as a homicide regardless of whether or not the charge is reduced since filing. On the other hand, if the charge for a case is upgraded later, then the reporting category in later reports will reflect the upgraded (higher) crime category.

Reflects all documents received by 11/15/2014.

(1) "Controlled Substance - Non Drug Court" are drug related cases that have never been accepted into drug court.

(2) "Controlled Substance - Drug Court" are drug related cases that have been formally accepted into drug court (identified by "Order of Participation").

Table 7. Comparison between SEA/KNT: Filings, Resolutions, and Pending Caseload  
King County Superior Court

	Nov 2013	Dec 2013	Jan 2014	Feb 2014	Mar 2014	Apr 2014	May 2014	Jun 2014	Jul 2014	Aug 2014	Sep 2014	Oct 2014 <sup>(1)</sup>
<b>Total Filings</b>												
SEA - # of Cases Filed	298	357	278	271	314	330	255	252	296	276	278	296
KNT - # of Cases Filed	184	211	234	243	290	293	296	197	222	230	209	294
SEA %	62%	63%	54%	53%	52%	53%	54%	56%	57%	54%	57%	50%
KNT %	38%	37%	46%	47%	48%	47%	46%	44%	43%	46%	43%	50%
<b>Total Resolutions</b>												
SEA - # of Cases Resolved	238	266	291	264	306	286	284	233	311	241	259	323
KNT - # of Cases Resolved	168	188	184	206	208	189	212	231	253	215	250	261
SEA - Drug Court Cases Resolved	9	7	14	10	11	9	16	16	17	13	7	19
KNT - Drug Court Cases Resolved	3	1	6	15	3	6	1	6	3	5	7	2
SEA %	57%	58%	59%	53%	58%	58%	55%	48%	53%	51%	50%	53%
KNT %	40%	41%	37%	42%	39%	39%	42%	48%	43%	45%	48%	43%
SEA - Drug Court %	2%	2%	3%	2%	2%	2%	3%	3%	3%	3%	1%	3%
KNT - Drug Court %	1%	0%	1%	3%	1%	1%	0%	1%	1%	1%	1%	0%
<b>Total Pending</b>												
SEA - # of Cases Pending	1448	1536	1489	1492	1455	1475	1448	1433	1383	1414	1414	1384
KNT - # of Cases Pending	1227	1244	1239	1274	1333	1391	1462	1416	1393	1390	1379	1367
SEA - Drug Court Cases Pending	143	140	137	149	158	162	156	166	163	165	176	166
KNT - Drug Court Cases Pending	96	88	89	86	83	84	84	86	89	91	92	102
SEA %	50%	51%	50%	50%	48%	47%	46%	46%	46%	46%	46%	46%
KNT %	42%	41%	42%	42%	44%	45%	46%	46%	46%	45%	45%	45%
SEA - Drug Court %	5%	5%	5%	5%	5%	5%	5%	5%	5%	5%	6%	5%
KNT - Drug Court %	3%	3%	3%	3%	3%	3%	3%	3%	3%	3%	3%	3%

(1) Reflects all documents received by 11/15/2014.

(2) The number of judges does not include RJC chief judge and the criminal chief judge at SEA.

Table 8. Drug Court Statistics

King County Superior Court

Categories	Sep 2013	Oct 2013	Nov 2013	Dec 2013	Jan 2014	Feb 2014	Mar 2014	Apr 2014	May 2014	Jun 2014	Jul 2014	Aug 2014	Sep 2014	Oct 2014
Referrals - Total	26	50	37	39	41	39	61	48	42	28	50	52	36	46
Directly from PA	19	41	28	25	19	26	39	33	26	13	28	22	22	29
From Mainstream	7	9	9	14	22	13	22	15	16	15	22	30	14	17
Arraignments in Drug Court <sup>(1)</sup>	14	20	20	27	20	17	28	39	19	26	21	22	17	23
GP in Drug Court <sup>(2)</sup>	4	1	2	2	0	4	5	3	3	2	1	2	1	1
Return to mainstream <sup>(3)</sup>	9	8	7	12	10	7	10	17	16	17	22	17	15	21
Opt-in <sup>(4)</sup>	20	15	19	7	15	31	21	24	4	22	24	14	20	20
Graduations <sup>(5)</sup>	11	18	10	0	14	18	12	10	11	15	19	10	13	5
Terminations <sup>(6)</sup>	9	9	2	8	6	7	2	5	6	7	1	8	1	16

- (1) Arraignments held in drug court regardless opt-in status of the cases.
- (2) Guilty pleas entered in drug court before opt-in.
- (3) Referred to drug court but decision by court order to go to mainstream.
- (4) Opt-in reflects the court order of participation.
- (5) Graduations are dismissals of opted-in cases after the completion of program.
- (6) Terminations are cases that fail in drug court.