

King County Superior Court
Criminal Department Statistical Report

December 2014

Department of Judicial Administration
Prepared by: Shiquan Liao, Ph.D., Statistician

Release date: January 20, 2015

Report #: CRM-2014-12

Terminology

Age of Pending Case

Time (days) from filing to resolution, less suspense time if applicable.

Age of Resolved Case

Time (days) from filing to resolution, less suspense time if applicable.

End Pending

Number of pending cases at the end of reporting period.

Net Change in Pending

The change in number of pending cases (end pending minus previous pending).

Pending Case

A case is defined as pending if it is unresolved and not on suspense status.

Previous Pending

Number of pending cases at the beginning of reporting period.

Reactivated Case

A case returns to active from suspense status during the reporting period.

Resolution

A case is resolved if all issues in the complaint are fully adjudicated. However, a drug court case is reported as resolved only when dispositive document is also filed (completed).

Resolution Category

Five resolution categories are used to report resolution of criminal cases: jury trial (CVJV, AQJV), non-jury trial (CVCT, AQCT), guilty plea (GP, GPAT, GPJT), dismissal (DSM), and other (all other resolution codes). For criminal RALJ cases, the resolution categories are: RALJ decision (CDTA, CDTM, CDTR), dismissal (DSRM), and others (any other resolution codes).

Suspended Case

A case is placed in suspense status (removing from active) during the reporting period.

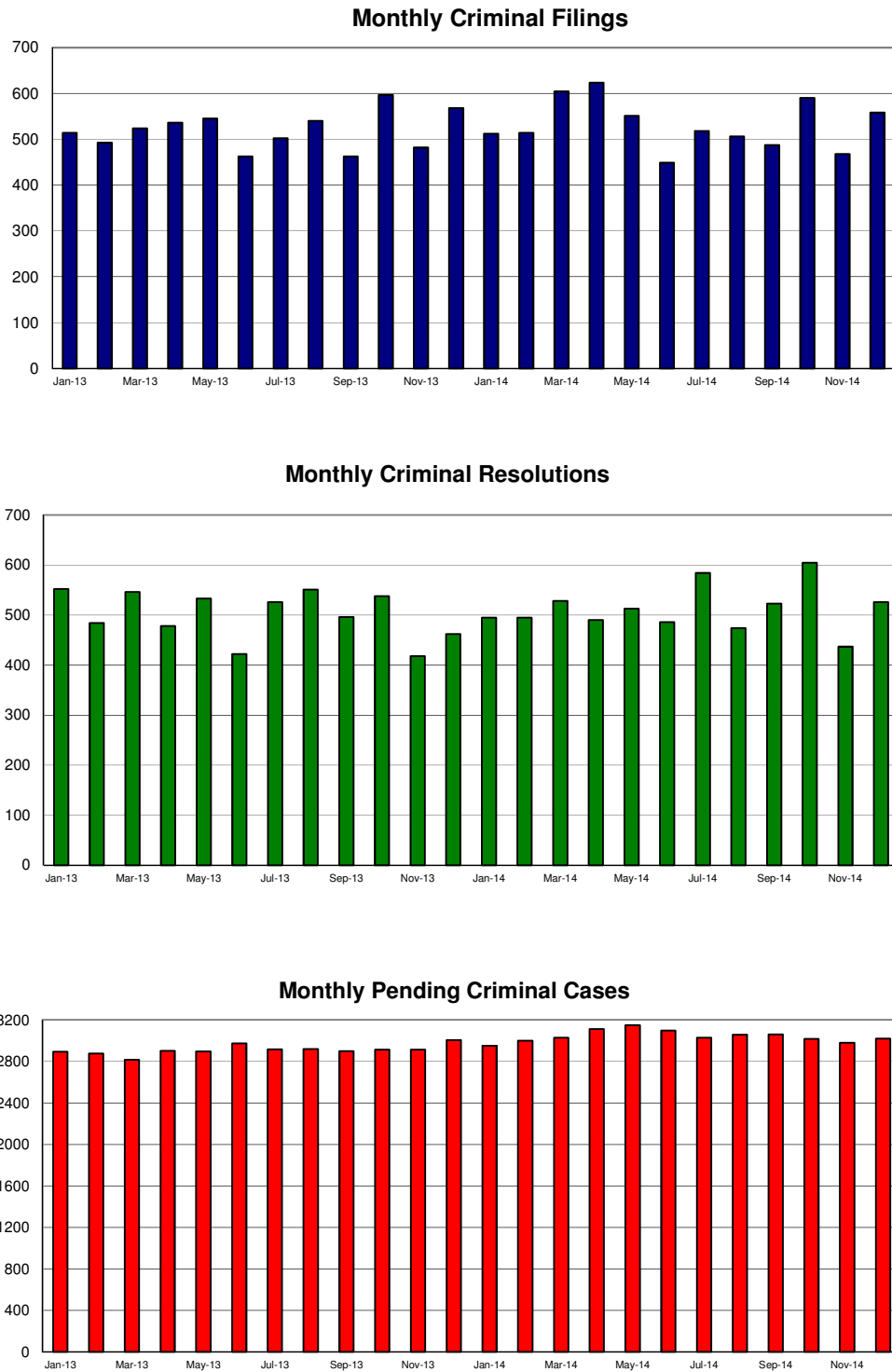
Suspense Status

A case is said to be on suspense status if it is on warrant or appeal.

Suspense Time

Time (days) a case is on suspense status.

Figure 1. Number of Criminal Filings, Resolutions and Pending Caseload by Month



Note: Starting January 2010, RALJ cases are included.

Figure 2. Crime Category as a Percentage of Total Filings by Year

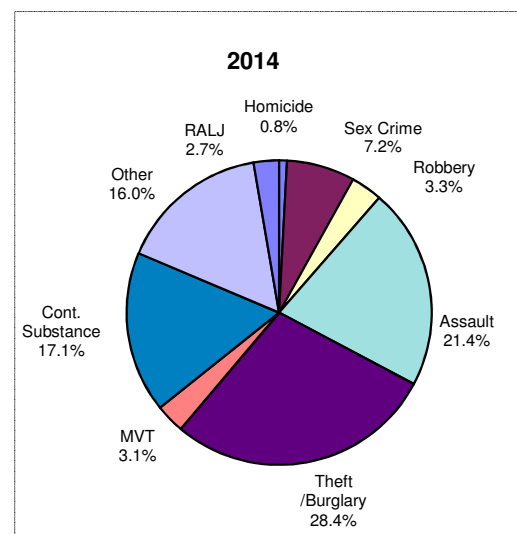
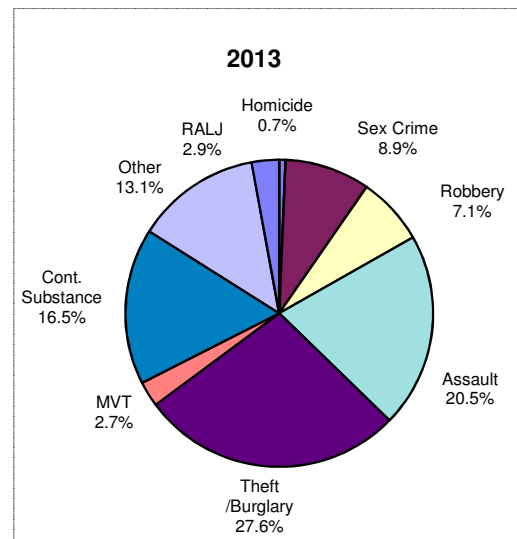
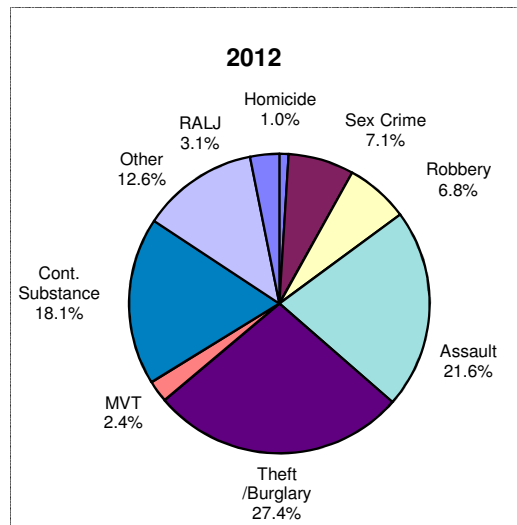


Table 1. Monthly Criminal New Filings by Crime Category ^(*)
King County Superior Court

	Jan	Feb	Mar	Apr	May	Jun	Jul	Aug	Sep	Oct	Nov	Dec	ADJ ⁽¹⁾	Annual
Total														
2011	576	513	620	518	525	492	486	590	491	409	478	478	(+2)	6178
2012	445	522	618	512	576	544	555	543	458	507	410	443	(+2)	6135
2013	514	492	524	536	545	462	502	540	462	597	482	568	(+2)	6226
2014 ⁽²⁾	512	514	604	623	551	449	518	506	487	590	468	558	(+6)	6383
Homicide														
2011	3	3	2	1	3	5	3	4	2	3	2	7	(0)	38
2012	4	2	7	4	7	2	7	7	7	3	6	4	(+2)	62
2013	3	2	5	3	2	2	4	3	6	6	0	5	(+1)	42
2014 ⁽²⁾	3	2	9	4	4	4	11	5	2	1	6	2	(-2)	51
Sex Crime														
2011	34	32	22	36	23	28	23	30	22	28	26	52	(0)	356
2012	34	49	34	60	40	22	38	47	33	20	30	27	(+1)	435
2013	45	39	79	54	49	27	54	43	19	38	59	51	(+6)	563
2014 ⁽²⁾	37	38	52	42	24	36	37	30	49	38	36	43	(-6)	456
Robbery														
2011	50	27	58	29	25	35	23	36	30	34	36	35	(0)	418
2012	33	38	57	19	50	32	17	32	36	47	24	33	(+1)	419
2013	44	36	33	33	31	40	27	41	48	49	29	34	(+7)	452
2014 ⁽²⁾	50	28	26	13	11	9	12	9	14	16	11	13	(-35)	177
Aggravated Assault														
2010	105	84	139	105	108	126	126	117	118	98	101	116	(0)	1343
2011	91	95	110	104	118	121	115	123	114	124	106	101	(+14)	1336
2012	103	116	102	121	119	76	122	98	103	104	110	104	(+24)	1302
2013 ⁽²⁾	128	109	137	109	113	116	130	121	100	106	87	108	(+29)	1393
Burglary/Theft /Larceny														
2011	147	124	141	114	141	100	119	140	107	86	92	122	(1)	1434
2012	141	134	178	160	156	121	175	144	119	114	106	133	(+13)	1694
2013	139	127	138	162	147	144	148	147	130	167	110	157	(+10)	1726
2014 ⁽²⁾	122	140	162	182	167	109	132	145	148	205	127	172	(+17)	1928
Motor Vehicle Theft														
2011	14	20	12	9	5	9	12	18	12	10	13	11	(0)	145
2012	18	19	15	5	13	7	10	19	11	10	7	12	(-6)	140
2013	17	14	12	15	11	9	16	10	17	19	9	16	(-3)	162
2014 ⁽²⁾	13	15	24	23	19	10	16	6	13	16	10	33	(+3)	201
Controlled Substance														
2011	120	108	107	99	104	97	65	120	100	82	99	67	(1)	1169
2012	57	102	147	88	93	152	116	85	75	90	53	51	(-1)	1108
2013	88	69	82	62	95	94	66	86	58	130	82	112	(0)	1024
2014 ⁽²⁾	74	87	116	142	104	80	68	84	74	99	81	82	(+7)	1098
Other														
2011	83	97	123	110	97	71	99	108	84	57	99	56	(0)	1084
2012	51	64	58	61	80	70	65	65	53	74	64	66	(-22)	749
2013	61	77	59	72	71	56	55	88	71	70	70	68	(-44)	774
2014 ⁽²⁾	73	77	65	98	100	71	99	85	75	93	96	86	(-8)	1010
Criminal RALJ														
2011	20	18	16	15	19	21	16	17	16	11	10	12	(0)	191
2012	16	19	12	11	19	17	12	21	10	25	14	16	(0)	192
2013	14	12	14	14	20	14	10	24	10	14	13	21	(+1)	181
2014 ⁽²⁾	12	18	13	10	9	14	13	21	12	16	14	19	(+1)	172
KNT Filing as % of Total														
2011	40%	42%	46%	43%	44%	45%	44%	41%	43%	47%	41%	47%		44%
2012	41%	41%	39%	40%	43%	39%	43%	45%	41%	45%	47%	47%		42%
2013	43%	46%	44%	46%	46%	39%	41%	35%	43%	41%	38%	37%		42%
2014 ⁽²⁾	46%	47%	48%	47%	46%	44%	43%	46%	43%	50%	46%	46%		45%

(*) The highest crime category in a case's history is used to classify cases. For example, a case charged with homicide at any time in the case's history is reported as a homicide regardless of whether the charge is reduced at resolution.

(1) "ADJ" = year-end adjustment.

(2) Reflects all documents received by 01/15/2015.

Table 2. Monthly Criminal Case Resolutions by Crime Category
King County Superior Court

	Jan	Feb	Mar	Apr	May	Jun	Jul	Aug	Sep	Oct	Nov	Dec	ADJ ⁽¹⁾	Annual
Total														
2011	590	546	595	560	536	549	514	547	508	552	514	446	(+16)	6463
2012	388	447	520	502	501	521	481	492	438	558	470	446	(+18)	5782
2013	552	484	546	478	533	422	526	551	496	538	418	462	(+13)	6019
2014 ⁽²⁾	495	495	528	490	513	486	584	474	523	605	437	526	(+11)	6167
Homicide														
2011	5	6	3	5	4	3	2	5	3	8	4	1	(0)	49
2012	1	5	2	6	3	5	4	1	5	2	2	5	(0)	41
2013	3	3	3	5	10	7	3	4	2	8	4	8	(+1)	61
2014 ⁽²⁾	2	5	6	6	3	1	3	2	5	2	3	6	(+1)	45
Sex Crime														
2011	30	42	21	21	18	19	31	30	36	31	24	41	(+2)	346
2012	37	27	37	39	33	38	33	47	31	56	28	25	(+4)	435
2013	34	39	39	47	43	36	33	54	45	47	29	27	(0)	473
2014 ⁽²⁾	40	47	40	36	50	34	39	34	36	42	20	34	(-1)	451
Robbery														
2011	39	38	45	39	33	40	34	31	31	29	34	36	(-1)	428
2012	31	42	34	38	32	52	33	37	29	33	27	25	(0)	413
2013	42	30	40	32	36	38	38	35	45	29	39	28	(+1)	433
2014 ⁽²⁾	43	41	41	24	24	17	26	25	15	14	14	23	(-44)	263
Aggravated Assault														
2010	117	123	131	121	117	100	107	119	129	133	127	98	(+2)	1424
2011	74	96	137	111	126	99	108	85	94	123	128	107	(+3)	1291
2012	102	109	132	98	127	86	120	108	97	138	89	83	(0)	1289
2013 ⁽²⁾	101	103	113	112	104	107	125	119	103	153	129	112	(+17)	1398
Burglary/Theft /Larceny														
2011	122	120	128	129	150	135	112	131	106	151	125	105	(+1)	1515
2012	81	116	112	132	124	134	133	141	100	132	103	115	(+3)	1426
2013	148	135	137	113	137	106	148	149	136	124	109	127	(+11)	1580
2014 ⁽²⁾	123	133	150	125	141	122	171	126	171	149	115	145	(=7)	1678
Motor Vehicle Theft														
2011	16	10	14	13	12	7	13	9	10	10	9	10	(0)	133
2012	12	8	13	14	20	7	7	17	11	11	9	8	(+1)	138
2013	15	7	13	12	14	8	13	9	13	14	8	6	(0)	132
2014 ⁽²⁾	14	16	8	16	15	28	11	11	13	16	16	13	(0)	177
Controlled Substance – Non Drug Court														
2011	101	82	111	97	77	102	89	113	78	81	78	74	(+8)	1088
2012	69	67	79	76	81	71	81	79	82	93	57	78	(+11)	916
2013	104	61	70	64	75	46	70	74	71	62	49	81	(-2)	825
2014 ⁽²⁾	69	62	74	72	65	73	86	70	81	94	61	83	(+1)	891
Drug Court														
2011	29	20	21	21	9	16	23	13	15	15	27	6	(0)	218
2012	22	11	21	16	10	22	14	16	17	22	23	2	(0)	204
2013	21	21	30	27	18	20	24	29	20	27	12	8	(0)	261
2014 ⁽²⁾	20	25	14	15	17	22	20	18	14	21	12	8	(+4)	210
Other														
2011	111	91	105	100	104	107	88	81	83	80	72	57	(-4)	1075
2012	45	62	68	60	53	76	54	55	51	73	69	67	(-1)	732
2013	70	66	70	65	62	56	61	71	55	77	59	72	(-5)	786
2014 ⁽²⁾	66	54	67	73	75	64	87	57	72	97	60	94	(+27)	893
Criminal RALJ														
2011	20	14	16	14	12	20	15	15	17	14	14	18	(-2)	187
2012	16	13	17	10	19	17	14	14	18	13	24	14	(-3)	186
2013	13	13	12	15	11	19	16	18	12	12	20	22	(-4)	179
2014 ⁽²⁾	17	9	15	11	19	18	16	12	13	17	7	8	(-1)	161
KNT Filing as % of Total														
2011	38%	34%	37%	40%	40%	33%	34%	40%	42%	40%	41%	38%		38%
2012	41%	45%	44%	41%	43%	46%	39%	43%	44%	39%	42%	41%		42%
2013	44%	40%	46%	44%	45%	38%	41%	49%	42%	38%	41%	41%		42%
2014 ⁽²⁾	38%	45%	40%	40%	42%	49%	44%	46%	49%	44%	43%	43%		42%

The highest crime category in a case's history is used to classify cases. For example, a case charged with homicide at any time in the case's history is reported as a homicide regardless of whether the charge is reduced at resolution.

- (1) "ADJ" = year-end adjustment.
- (2) Reflects all documents received by 01/15/2015.
- (3) "Controlled Substance - Non Drug Court" are drug related cases that have never been accepted into drug court.
- (4) "Controlled Substance - Drug Court" are drug related cases that have been formally accepted into drug court (identified by "Order of Participation").

Table 3. Number of Cases Resolved and Resolution Category
King County Superior Court

Crime Category (*)	Jan 2014	Feb 2014	Mar 2014	Apr 2014	May 2014	Jun 2014	Jul 2014	Aug 2014	Sep 2014	Oct 2014	Nov 2014	Dec 2014
Homicide	2	5	6	6	3	1	3	2	5	2	3	6
Resolved by Jury Trial	0	0	0	2	0	0	1	1	0	2	1	1
Resolved by Non-Jury Trial	1	0	0	0	0	0	0	0	0	0	0	1
Resolved by Guilty Plea	1	5	6	4	3	1	2	1	5	0	2	4
Dismissal	0	0	0	0	0	0	0	0	0	0	0	0
Others	0	0	0	0	0	0	0	0	0	0	0	0
Sex Crime	40	47	40	36	50	34	39	34	36	42	20	34
Resolved by Jury Trial	3	4	5	2	3	2	4	2	2	3	3	2
Resolved by Non-Jury Trial	0	0	1	0	0	0	0	1	0	1	0	0
Resolved by Guilty Plea	33	38	32	28	42	29	32	26	28	35	15	28
Dismissal	4	4	2	6	5	3	3	5	6	3	2	4
Others	0	1	0	0	0	0	0	0	0	0	0	0
Robbery	43	41	41	24	24	17	26	25	15	14	14	23
Resolved by Jury Trial	1	5	4	2	0	2	0	0	0	1	0	0
Resolved by Non-Jury Trial	0	0	0	0	0	0	0	0	0	0	0	0
Resolved by Guilty Plea	40	30	33	11	21	11	24	21	14	11	14	19
Dismissal	2	6	4	11	3	4	2	4	1	2	0	4
Others	0	0	0	0	0	0	0	0	0	0	0	0
Aggravated Assault	101	103	113	112	104	107	125	119	103	153	129	112
Resolved by Jury Trial	5	5	6	2	7	7	8	5	6	5	7	3
Resolved by Non-Jury Trial	0	0	0	1	0	1	0	1	0	1	0	0
Resolved by Guilty Plea	81	81	94	85	87	84	97	97	88	122	111	96
Dismissal	14	17	13	24	10	14	20	16	9	25	10	13
Others	1	0	0	0	0	1	0	0	0	0	1	0
Burglary/Theft/Larceny	123	133	150	125	141	122	171	126	171	149	115	145
Resolved by Jury Trial	2	3	3	4	5	4	6	2	2	3	2	3
Resolved by Non-Jury Trial	0	0	0	0	0	0	2	0	1	0	0	1
Resolved by Guilty Plea	103	114	131	107	117	108	151	114	151	130	104	126
Dismissal	18	16	16	14	19	10	12	10	17	16	9	15
Others	0	0	0	0	0	0	0	0	0	0	0	0
Motor Vehicle Theft	14	16	8	16	15	28	11	11	13	16	16	13
Resolved by Jury Trial	0	0	1	0	0	1	0	0	0	0	1	0
Resolved by Non-Jury Trial	0	0	0	0	0	0	0	0	0	0	0	0
Resolved by Guilty Plea	14	12	7	10	10	26	10	8	13	11	13	11
Dismissal	0	4	0	6	5	1	1	3	0	5	2	2
Others	0	0	0	0	0	0	0	0	0	0	0	0
Controlled Substance - Non Drug Court⁽¹⁾	69	62	74	72	65	73	86	70	81	94	61	83
Resolved by Jury Trial	1	0	3	0	1	2	2	1	0	0	1	3
Resolved by Non-Jury Trial	0	0	0	0	0	2	0	1	0	3	0	1
Resolved by Guilty Plea	54	58	58	64	50	56	68	59	69	82	51	63
Dismissal	14	4	13	8	14	13	16	9	12	9	9	16
Others	0	0	0	0	0	0	0	0	0	0	0	0
Drug Court⁽²⁾	20	25	14	15	17	22	20	18	14	21	12	8
Resolved by Non-Jury Trial	6	5	1	4	5	6	1	8	0	11	4	3
Resolved by Guilty Plea	0	2	1	1	1	1	0	0	1	5	2	5
Dismissal	14	18	12	10	11	15	19	10	13	5	6	0
Others	0	0	0	0	0	0	0	0	0	0	0	0
Other	66	54	67	73	75	64	87	57	72	97	61	94
Resolved by Jury Trial	4	1	2	4	2	3	4	2	1	4	2	5
Resolved by Non-Jury Trial	0	0	0	0	0	0	0	0	0	2	1	1
Resolved by Guilty Plea	43	43	49	53	57	45	66	42	54	67	45	63
Dismissal	17	10	16	15	16	15	16	10	17	23	12	20
Others	2	0	0	1	0	1	0	3	0	1	0	5
Criminal RALJ	17	9	15	11	19	18	16	12	13	17	7	8
RALJ Decision	13	6	11	8	13	14	9	7	7	14	5	6
Dismissal	4	2	4	2	6	4	7	3	5	3	2	2
Others	0	1	0	1	0	0	0	2	1	0	0	0

(*) The highest crime category in a case's history is used to classify cases.

Reflects all documents received by 01/15/2015.

(1) "Controlled Substance - Non Drug Court" are drug related cases that have never been accepted into drug court.

(2) "Controlled Substance - Drug Court" are drug related cases that have been formally accepted into drug court (identified by "Order of Participation").

(3) DV Subset includes cases with a DV flag in at least one of the charges within the specific crime category at the time of the reporting.

Table 4. Age (days) of Resolved Cases
King County Superior Court

Crime Category ^(*)	Jan 2014	Feb 2014	Mar 2014	Apr 2014	May 2014	Jun 2014	Jul 2014	Aug 2014	Sep 2014	Oct 2014	Nov 2014	Dec 2014
Homicide ^(**)												
50% Cases Resolved by Day	464	241	544	626	289	519	722	447	297	1254	330	567
90% Cases Resolved by Day	643	455	1782	1117	836	519	777	686	375	1731	390	897
Average Time (days)	464	257	687	611	457	519	530	447	301	1254	313	566
Sex Crime												
50% Cases Resolved by Day	144	142	175	120	157	167	134	167	160	145	149	205
90% Cases Resolved by Day	330	618	783	347	459	318	405	548	395	525	672	417
Average Time (days)	186	234	265	166	218	185	193	234	180	213	230	243
Robbery												
50% Cases Resolved by Day	99	137	94	89	160	139	174	148	79	140	114	86
90% Cases Resolved by Day	284	318	195	270	350	309	299	281	502	260	292	309
Average Time (days)	137	168	125	118	181	152	157	184	151	187	136	185
Aggravated Assault												
50% Cases Resolved by Day	101	108	83	91	119	106	100	98	91	116	106	105
90% Cases Resolved by Day	269	287	329	270	316	335	296	289	273	263	321	259
Average Time (days)	132	143	125	147	162	146	151	133	129	143	172	131
Burglary/Theft/Larceny												
50% Cases Resolved by Day	119	113	129	104	116	111	100	126	116	101	111	108
90% Cases Resolved by Day	384	405	267	275	311	294	264	308	281	279	291	267
Average Time (days)	167	172	146	139	330	141	128	146	147	141	141	133
Motor Vehicle Theft												
50% Cases Resolved by Day	109	177	116	108	125	91	69	127	64	125	112	143
90% Cases Resolved by Day	281	384	516	388	262	277	141	193	114	235	170	340
Average Time (days)	136	203	150	139	138	121	84	121	74	129	102	172
Controlled Substance												
50% Cases Resolved by Day	118	106	115	112	143	105	106	116	138	128	126	133
90% Cases Resolved by Day	322	287	274	320	299	254	258	285	317	309	280	379
Average Time (days)	153	146	143	150	165	137	130	138	159	167	137	181
Drug Court ⁽²⁾												
50% Cases Resolved by Day	599	643	545	521	478	537	589	551	540	475	684	425
90% Cases Resolved by Day	899	889	748	1038	1099	833	840	1030	1216	841	1503	764
Average Time (days)	602	663	535	595	544	589	617	574	735	533	844	484
Other												
50% Cases Resolved by Day	109	131	91	106	96	115	113	124	95	103	109	103
90% Cases Resolved by Day	323	295	268	267	312	341	310	234	214	293	254	218
Average Time (days)	146	151	116	122	143	159	143	137	217	144	122	116
Criminal RALJ												
50% Cases Resolved by Day	249	318	273	304	270	281	225	253	219	239	352	231
90% Cases Resolved by Day	340	502	371	482	577	476	345	353	354	350	534	437
Average Time (days)	255	311	277	513	303	304	260	279	238	261	373	248

(*) The highest crime category in a case's history is used to classify cases. For example, a case charged with homicide at any time during the case's history is reported as a homicide regardless of whether the charge is reduced at resolution.

(**) Due to small number of resolutions in this category, the age statistics for homicides are expected to vary considerably.

Reflects all documents received by **01/15/2015**.

(1) "Controlled Substance - Non Drug Court" are drug related cases that have never been accepted into drug court.

(2) "Controlled Substance - Drug Court" are drug related cases that have been formally accepted into drug court (identified by "Order of Participation").

(3) DV Subset includes cases with a DV flag in at least one of the charges within the specific crime category at the time of the reporting.

Table 5. Pending Criminal Cases
King County Superior Court

Crime Category (*)	Dec 2013	Jan 2014	Feb 2014	Mar 2014	Apr 2014	May 2014	Jun 2014	Jul 2014	Aug 2014	Sep 2014	Oct 2014	Nov 2014	Dec 2014
Total													
Previous Pending	2914	3008	2954	3001	3029	3112	3150	3099	3028	3060	3061	3019	2982
New Filing (+)	568	512	514	604	623	551	449	518	506	487	590	468	558
Resolved (-)	462	495	495	528	490	513	486	584	474	523	605	437	526
End Pending	3008	2954	3001	3029	3112	3150	3099	3028	3060	3061	3019	2982	3021
Homicide													
Previous Pending	60	62	63	59	60	61	61	66	73	73	67	65	66
New Filing (+)	5	3	2	9	4	4	4	11	5	2	1	6	2
Resolved (-)	8	2	5	6	6	3	1	3	2	5	2	3	6
End Pending	62	63	59	60	61	61	66	73	71	67	65	66	65
Sex Crime													
Previous Pending	275	295	289	283	283	286	273	267	267	263	259	252	264
New Filing (+)	51	37	38	52	42	24	36	37	30	49	38	36	43
Resolved (-)	27	40	47	40	36	50	34	39	34	36	42	20	34
End Pending	295	289	283	283	286	273	267	267	263	259	252	264	270
Robbery													
Previous Pending	188	194	197	190	182	166	147	137	121	91	88	87	81
New Filing (+)	34	50	28	26	13	11	9	12	9	14	16	11	13
Resolved (-)	28	43	41	41	24	24	17	26	25	15	14	14	23
End Pending	194	197	190	182	166	147	137	121	91	88	87	81	65
Aggravated Assault													
Previous Pending	472	502	507	516	536	537	548	560	555	549	569	523	487
New Filing (+)	104	128	109	137	109	113	116	130	121	100	106	87	108
Resolved (-)	83	101	103	113	112	104	107	125	119	103	153	129	112
End Pending	502	507	516	536	537	548	560	555	549	569	523	487	504
Burglary/Theft/Larceny													
Previous Pending	717	732	693	695	705	728	748	717	700	726	705	720	710
New Filing (+)	157	122	140	162	182	167	109	132	145	148	205	127	172
Resolved (-)	127	123	133	150	125	141	122	171	126	171	149	115	145
End Pending	732	693	695	705	728	748	717	700	726	705	720	710	719
Motor Vehicle Theft													
Previous Pending	60	69	64	68	79	85	88	69	72	72	73	70	61
New Filing (+)	16	13	15	24	23	19	10	16	6	13	16	10	33
Resolved (-)	6	14	16	8	16	15	28	11	11	14	16	12	13
End Pending	69	64	68	79	85	88	69	72	72	73	70	61	70
Controlled Substance - Non Drug Court (1)													
Previous Pending	429	446	454	464	463	498	516	507	465	475	466	466	456
Resolved (-)	81	69	62	74	72	65	73	86	70	81	94	61	83
End Pending	446	454	464	463	498	516	507	465	475	466	466	456	427
Drug Court (2)													
Previous Pending	239	228	226	235	241	241	240	252	252	256	268	268	284
New Filing (+)	7	15	31	21	24	4	22	24	14	20	20	31	20
Resolved (-)	8	20	25	14	15	17	22	20	18	14	21	12	8
End Pending	228	226	235	241	246	240	252	252	256	268	268	284	293
Other													
Previous Pending	330	337	323	344	334	359	391	391	394	418	428	431	429
New Filing (+)	68	73	77	65	98	100	71	99	85	75	93	96	86
Resolved (-)	72	66	54	67	73	75	64	87	57	72	97	60	94
End Pending	337	323	344	334	359	391	391	394	418	428	431	429	453
Criminal RALJ													
Previous Pending	144	143	138	147	146	146	138	133	129	139	138	137	144
New Filing (+)	21	12	18	13	10	9	14	13	21	12	16	14	19
Resolved (-)	22	17	9	15	11	19	18	16	12	13	17	7	8
End Pending	143	138	147	146	146	138	133	129	139	138	137	144	155
Total Pending Caseload													
SEA (%)	56%	55%	55%	53%	53%	51%	52%	51%	52%	52%	51%	51%	51%
KNT (%)	44%	45%	45%	47%	47%	49%	48%	49%	48%	48%	49%	49%	49%

(*) Information from filing to the reporting time is used to determine crime category for pending cases. The category for a case in this table is the highest crime category since filing. For example, a case initially charged with homicide is reported as a homicide regardless of whether or not the charge is reduced since filing. On the other hand, if the charge for a case is upgraded later, then the reporting category in later reports will reflect the upgraded (higher) crime category.

Reflects all documents received by 01/15/2015. Drug court cases are identified by docket code "ORPAR" (Order for Participation).

Table 6. Age of Pending Criminal Cases
King County Superior Court

Crime Category (*)	Dec 2013	Jan 2014	Feb 2014	Mar 2014	Apr 2014	May 2014	Jun 2014	Jul 2014	Aug 2014	Sep 2014	Oct 2014	Nov 2014	Dec 2014
Total													
Age (days)													
Median (50 th percentile)	113	117	113	111	107	103	110	114	118	121	114	123	121
95 th percentile	755	758	730	728	719	725	735	746	759	765	760	785	771
# of Cases in Age Interval													
0 - 60 days (0 - 2 months)	901	882	946	997	1043	1022	919	903	895	885	930	884	868
61-120 days (3 - 4 months)	674	628	614	614	623	694	765	667	659	640	621	593	640
121-180 days (5 - 6 months)	394	423	429	401	410	417	409	461	481	455	415	391	413
181-270 days (7 - 9 months)	365	361	359	359	387	357	358	353	370	406	386	413	365
> 270 days (> 9 months)	674	660	653	658	649	660	648	644	655	675	667	701	735
Homicide													
Age (days)													
Median (50 th percentile)	324	355	380	252	239	237	235	233	244	215	240	262	262
95 th percentile	1148	1179	1076	1047	1074	1105	1135	1360	1391	1421	1240	1270	1124
# of Cases in Age Interval													
0 - 60 days (0 - 2 months)	9	6	3	10	14	8	9	15	10	6	4	4	11
61-120 days (3 - 4 months)	9	8	9	5	4	10	13	7	9	13	9	5	4
121-180 days (5 - 6 months)	6	8	8	7	7	6	4	9	13	6	7	13	9
181-270 days (7 - 9 months)	3	5	6	10	9	9	11	10	7	11	15	13	10
> 270 days (> 9 months)	35	36	33	28	27	28	29	32	32	31	30	31	31
Sex Crime													
Age (days)													
Median (50 th percentile)	142	156	144	144	147	142	137	148	154	155	138	142	136
95 th percentile	664	695	708	691	622	750	683	714	735	775	796	740	681
# of Cases in Age Interval													
0 - 60 days (0 - 2 months)	73	72	71	76	76	71	63	70	60	58	68	62	68
61-120 days (3 - 4 months)	53	55	54	49	50	52	60	43	47	55	48	49	56
121-180 days (5 - 6 months)	50	37	36	45	42	35	35	46	43	30	32	45	43
181-270 days (7 - 9 months)	41	45	44	41	39	42	39	38	45	43	40	33	34
> 270 days (> 9 months)	78	80	78	72	79	73	70	70	68	73	64	75	69
Robbery													
Age (days)													
Median (50 th percentile)	92	89	81	85	105	129	141	151	173	197	179	155	79
95 th percentile	484	465	493	524	604	635	707	696	769	799	788	818	849
# of Cases in Age Interval													
0 - 60 days (0 - 2 months)	62	73	79	57	48	28	24	26	19	15	28	24	22
61-120 days (3 - 4 months)	69	47	36	56	51	40	35	20	12	13	12	9	15
121-180 days (5 - 6 months)	16	36	35	23	21	36	34	29	15	13	5	9	4
181-270 days (7 - 9 months)	23	19	16	18	21	17	18	23	25	25	15	13	3
> 270 days (> 9 months)	24	22	24	28	25	26	26	23	20	22	27	26	21
Aggravated Assault													
Age (days)													
Median (50 th percentile)	89	88	82	82	84	85	90	92	91	97	87	97	100
95 th percentile	531	544	572	602	581	488	514	483	487	505	535	565	517
# of Cases in Age Interval													
0 - 60 days (0 - 2 months)	185	192	218	215	214	199	205	213	194	205	191	163	167
61-120 days (3 - 4 months)	120	116	103	115	120	144	150	124	132	130	121	117	120
121-180 days (5 - 6 months)	72	77	67	73	67	71	74	88	89	81	73	63	74
181-270 days (7 - 9 months)	51	46	50	61	64	62	58	57	62	82	67	68	57
> 270 days (> 9 months)	74	76	78	72	72	72	73	73	72	71	71	76	86
Burglary/Theft/Larceny													
Age (days)													
Median (50 th percentile)	99	108	96	91	83	86	95	100	103	88	86	92	85
95 th percentile	551	565	512	528	545	565	595	615	585	615	623	658	588
# of Cases in Age Interval													
0 - 60 days (0 - 2 months)	231	223	244	270	288	274	239	223	261	251	272	275	262
121-180 days (5 - 6 months)	198	155	149	162	159	190	197	174	166	153	178	160	177
61-120 days (3 - 4 months)	100	110	119	82	90	105	101	115	112	111	92	88	99
181-270 days (7 - 9 months)	89	93	81	79	84	69	64	72	77	82	67	76	71
> 270 days (> 9 months)	114	112	102	112	107	110	116	116	110	108	111	111	110

(*) The highest crime category since filing is used to classify cases. For example, a case initially charged with homicide is reported as a homicide regardless of whether or not the charge is reduced since filing. On the other hand, if the charge for a case is upgraded later, then the reporting category in later reports will reflect the upgraded (higher) crime category.

Reflects all documents received by 01/15/2015.

(1) "Controlled Substance - Non Drug Court" are drug related cases that have never been accepted into drug court.

(2) "Controlled Substance - Drug Court" are drug related cases that have been formally accepted into drug court (identified by "Order of Participation").

Table 6 (cont.). Age of Pending Criminal Cases
King County Superior Court

Crime Category (*)	Dec 2013	Jan 2014	Feb 2014	Mar 2014	Apr 2014	May 2014	Jun 2014	Jul 2014	Aug 2014	Sep 2014	Oct 2014	Nov 2014	Dec 2014
Motor Vehicle Theft													
Age (days)													
Median (50 th percentile)	98	98	83	61	69	64	84	85	89	120	121	117	84
95 th percentile	432	463	387	379	287	318	348	379	337	367	398	428	400
# of Cases in Age Interval													
0 - 60 days (0 - 2 months)	21	23	28	39	38	43	26	28	27	20	21	18	30
61-120 days (3 - 4 months)	17	13	17	17	22	23	25	20	19	17	14	13	13
121-180 days (5 - 6 months)	13	7	10	10	13	11	7	11	12	15	15	7	9
181-270 days (7 - 9 months)	5	9	6	8	7	5	6	8	8	13	9	11	6
> 270 days (> 9 months)	13	12	7	5	5	6	5	5	6	8	11	12	12
Controlled Substance - Non Drug Court⁽¹⁾													
Age (days)													
Median (50 th percentile)	82	93	95	99	82	77	81	98	104	105	95	98	96
95 th percentile	780	758	681	712	708	684	681	745	776	806	837	922	953
# of Cases in Age Interval													
0 - 60 days (0 - 2 months)	166	158	149	163	205	217	183	151	137	163	166	165	127
61-120 days (3 - 4 months)	104	127	126	108	97	107	146	141	129	103	97	108	127
121-180 days (5 - 6 months)	57	55	62	75	78	67	56	56	91	85	78	53	58
181-270 days (7 - 9 months)	45	45	58	43	48	52	59	48	41	40	57	56	49
> 270 days (> 9 months)	74	69	69	74	70	73	63	69	77	75	68	74	66
Drug Court⁽²⁾													
Age (days)													
Median (50 th percentile)	424	403	389	399	393	413	371	351	354	357	360	369	374
95 th percentile	1113	1094	1038	1056	1084	1110	998	1029	1032	1034	1060	966	997
# of Cases in Age Interval													
0 - 60 days (0 - 2 months)	1	1	2	1	4	0	1	0	0	1	3	2	0
61-120 days (3 - 4 months)	5	6	8	8	9	8	21	13	7	5	4	8	6
121-180 days (5 - 6 months)	14	12	18	23	16	16	20	26	34	28	16	18	17
181-270 days (7 - 9 months)	30	34	31	32	44	40	39	45	41	49	59	67	56
> 270 days (> 9 months)	178	173	176	177	173	176	171	168	174	185	186	189	214
Other													
Age (days)													
Median (50 th percentile)	103	102	90	96	84	85	83	79	90	91	95	109	111
95 th percentile	834	865	892	924	951	809	879	829	795	825	793	790	756
# of Cases in Age Interval													
0 - 60 days (0 - 2 months)	119	101	122	135	133	164	146	150	154	135	149	141	148
61-120 days (3 - 4 months)	75	76	79	61	81	89	96	108	114	127	106	93	94
121-180 days (5 - 6 months)	38	53	50	40	44	40	49	50	53	66	74	72	70
181-270 days (7 - 9 months)	46	36	32	36	37	33	32	27	33	32	36	53	51
> 270 days (> 9 months)	59	57	61	62	64	65	68	59	32	68	66	70	90
Criminal RALJ													
Age (days)													
Median (50 th percentile)	141	150	145	147	149	169	169	162	166	154	144	144	146
95 th percentile	391	422	380	400	430	458	410	438	469	499	530	560	591
# of Cases in Age Interval													
0 - 60 days (0 - 2 months)	34	33	30	31	23	18	23	27	33	31	28	30	33
61-120 days (3 - 4 months)	24	25	33	33	30	31	22	17	24	24	32	31	28
121-180 days (5 - 6 months)	28	28	24	23	32	30	29	31	19	20	23	23	30
181-270 days (7 - 9 months)	32	29	35	31	34	28	32	25	31	29	21	23	28
> 270 days (> 9 months)	25	23	25	28	27	31	27	29	32	34	33	37	36

(*) The highest crime category since filing is used to classify cases. For example, a case initially charged with homicide is reported as a homicide regardless of whether or not the charge is reduced since filing. On the other hand, if the charge for a case is upgraded later, then the reporting category in later reports will reflect the upgraded (higher) crime category.

Reflects all documents received by **01/15/2015**.

(1) "Controlled Substance - Non Drug Court" are drug related cases that have never been accepted into drug court.

(2) "Controlled Substance - Drug Court" are drug related cases that have been formally accepted into drug court (identified by "Order of Participation").

Table 7. Comparison between SEA/KNT: Filings, Resolutions, and Pending Caseload
King County Superior Court

	Jan 2014	Feb 2014	Mar 2014	Apr 2014	May 2014	Jun 2014	Jul 2014	Aug 2014	Sep 2014	Oct 2014	Nov 2014	Dec 2014 ⁽¹⁾
Total Filings												
SEA - # of Cases Filed	278	271	314	330	255	252	296	276	278	296	255	303
KNT - # of Cases Filed	234	243	290	293	296	197	222	230	209	294	213	255
SEA %	54%	53%	52%	53%	54%	56%	57%	54%	57%	50%	54%	54%
KNT %	46%	47%	48%	47%	46%	44%	43%	46%	43%	50%	46%	46%
Total Resolutions												
SEA - # of Cases Resolved	291	264	306	286	284	233	311	241	259	323	242	296
KNT - # of Cases Resolved	184	206	208	189	212	231	253	215	250	261	183	222
SEA - Drug Court Cases Resolved	14	10	11	9	16	16	17	13	7	19	6	5
KNT - Drug Court Cases Resolved	6	15	3	6	1	6	3	5	7	2	6	3
SEA %	59%	53%	58%	58%	55%	48%	53%	51%	50%	53%	55%	56%
KNT %	37%	42%	39%	39%	42%	48%	43%	45%	48%	43%	42%	42%
SEA - Drug Court %	3%	2%	2%	2%	3%	3%	3%	3%	1%	3%	1%	1%
KNT - Drug Court %	1%	3%	1%	1%	0%	1%	1%	1%	1%	0%	1%	1%
Total Pending												
SEA - # of Cases Pending	1489	1492	1455	1475	1448	1433	1383	1414	1414	1384	1336	1360
KNT - # of Cases Pending	1239	1274	1333	1391	1462	1416	1393	1390	1379	1367	1362	1368
SEA - Drug Court Cases Pending	137	149	158	162	156	166	163	165	176	166	183	188
KNT - Drug Court Cases Pending	89	86	83	84	84	86	89	91	92	102	101	105
SEA %	50%	50%	48%	47%	46%	46%	46%	46%	46%	46%	45%	45%
KNT %	42%	42%	44%	45%	46%	46%	46%	45%	45%	45%	46%	45%
SEA - Drug Court %	5%	5%	5%	5%	5%	5%	5%	5%	6%	5%	6%	6%
KNT - Drug Court %	3%	3%	3%	3%	3%	3%	3%	3%	3%	3%	3%	3%

(1) Reflects all documents received by **01/15/2015**.

(2) The number of judges does not include RJC chief judge and the criminal chief judge at SEA.

Table 8. Drug Court Statistics

King County Superior Court

Categories	Nov 2013	Dec 2013	Jan 2014	Feb 2014	Mar 2014	Apr 2014	May 2014	Jun 2014	Jul 2014	Aug 2014	Sep 2014	Oct 2014	Nov 2014	Dec 2014
Referrals - Total	37	39	41	39	61	48	42	28	50	52	36	46	31	31
Directly from PA	28	25	19	26	39	33	26	13	28	22	22	29	10	10
From Mainstream	9	14	22	13	22	15	16	15	22	30	14	17	21	21
Arraignments in Drug Court ⁽¹⁾	20	27	20	17	28	39	19	26	21	22	17	23	12	12
GP in Drug Court ⁽²⁾	2	2	0	4	5	3	3	2	1	2	1	1	2	2
Return to mainstream ⁽³⁾	7	12	10	7	10	17	16	17	22	17	15	21	9	9
Opt-in ⁽⁴⁾	19	7	15	31	21	24	4	22	24	14	20	20	31	31
Graduations ⁽⁵⁾	10	0	14	18	12	10	11	15	19	10	13	5	6	6
Terminations ⁽⁶⁾	2	8	6	7	2	5	6	7	1	8	1	16	6	6

- (1) Arraignments held in drug court regardless opt-in status of the cases.
- (2) Guilty pleas entered in drug court before opt-in.
- (3) Referred to drug court but decision by court order to go to mainstream.
- (4) Opt-in reflects the court order of participation.
- (5) Graduations are dismissals of opted-in cases after the completion of program.
- (6) Terminations are cases that fail in drug court.