

King County Superior Court  
Criminal Department Statistical Report

August 2015

Department of Judicial Administration  
Prepared by: Shiquan Liao, Ph.D., Statistician

Release date: September 20, 2015

**Report #: CRM-2015-08**

## Terminology

### **Age of Pending Case**

Time (days) from filing to resolution, less suspense time if applicable.

### **Age of Resolved Case**

Time (days) from filing to resolution, less suspense time if applicable.

### **End Pending**

Number of pending cases at the end of reporting period.

### **Net Change in Pending**

The change in number of pending cases (end pending minus previous pending).

### **Pending Case**

A case is defined as pending if it is unresolved and not on suspense status.

### **Previous Pending**

Number of pending cases at the beginning of reporting period.

### **Reactivated Case**

A case returns to active from suspense status during the reporting period.

### **Resolution**

A case is resolved if all issues in the complaint are fully adjudicated. However, a drug court case is reported as resolved only when dispositive document is also filed (completed).

### **Resolution Category**

Five resolution categories are used to report resolution of criminal cases: jury trial (CVJV, AQJV), non-jury trial (CVCT, AQCT), guilty plea (GP, GPAT, GPJT), dismissal (DSM), and other (all other resolution codes). For criminal RALJ cases, the resolution categories are: RALJ decision (CDTA, CDTM, CDTR), dismissal (DSRM), and others (any other resolution codes).

### **Suspended Case**

A case is placed in suspense status (removing from active) during the reporting period.

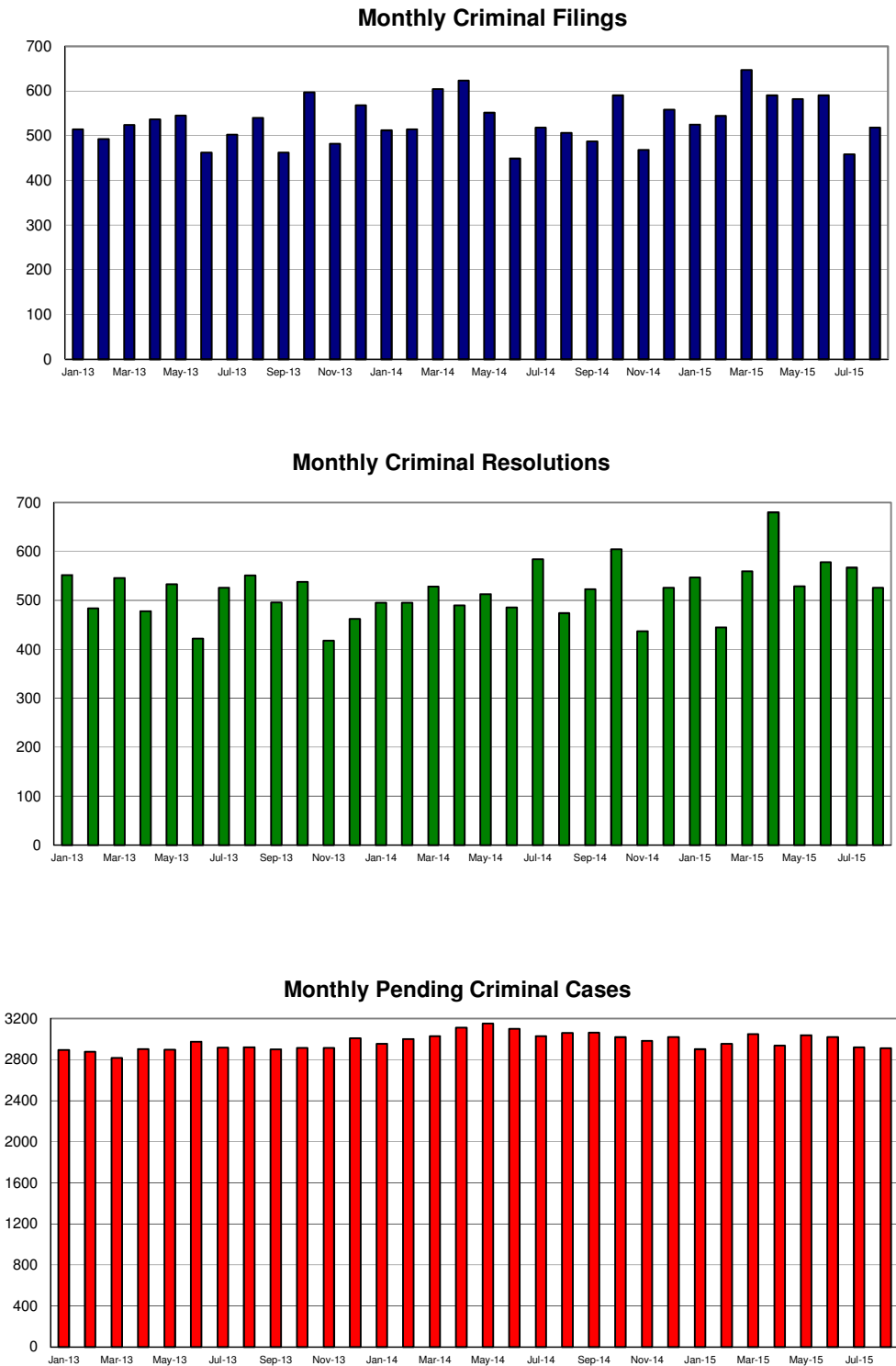
### **Suspense Status**

A case is said to be on suspense status if it is on warrant or appeal.

### **Suspense Time**

Time (days) a case is on suspense status.

Figure 1. Number of Criminal Filings, Resolutions and Pending Caseload by Month



Note: Starting January 2010, RALJ cases are included.

Figure 2. Crime Category as a Percentage of Total Filings by Year

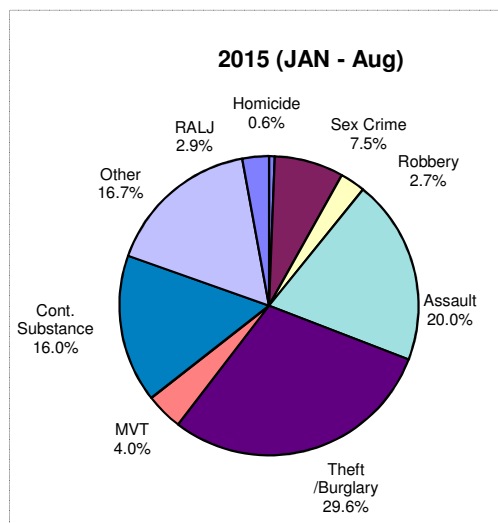
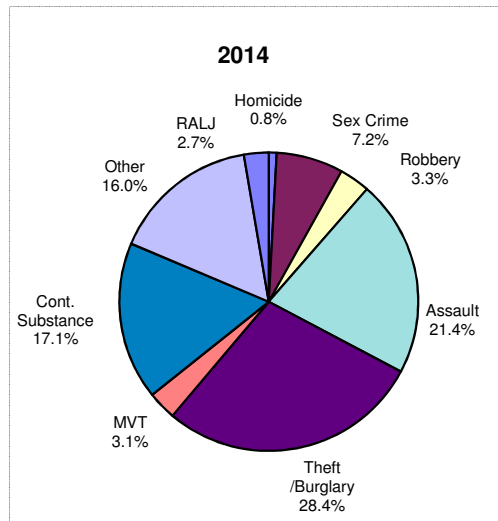
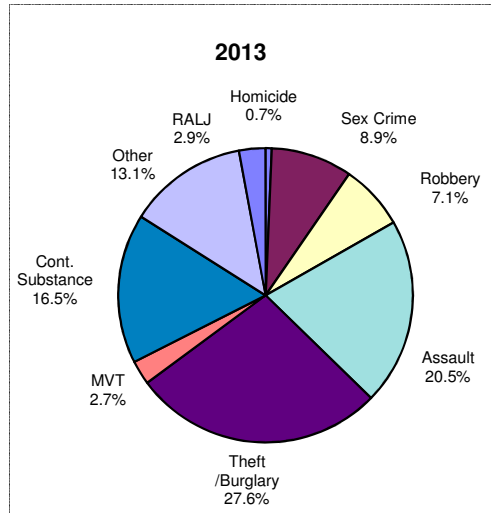


Table 1. Monthly Criminal New Filings by Crime Category <sup>(\*)</sup>  
King County Superior Court

	Jan	Feb	Mar	Apr	May	Jun	Jul	Aug	Sep	Oct	Nov	Dec	ADJ <sup>(1)</sup>	Annual
<b>Total</b>														
2012	445	522	618	512	576	544	555	543	458	507	410	443	(+2)	6135
2013	514	492	524	536	545	462	502	540	462	597	482	568	(+2)	6226
2014	512	514	604	623	551	449	518	506	487	590	468	558	(+6)	6383
2015 <sup>(2)</sup>	525	544	647	590	582	590	458	518						
<b>Homicide</b>														
2012	4	2	7	4	7	2	7	7	7	3	6	4	(+2)	62
2013	3	2	5	3	2	2	4	3	6	6	0	5	(+1)	42
2014	3	2	9	4	4	4	11	5	2	1	6	2	(-2)	51
2015 <sup>(2)</sup>	4	0	3	5	0	6	3	6						
<b>Sex Crime</b>														
2012	34	49	34	60	40	22	38	47	33	20	30	27	(+1)	435
2013	45	39	79	54	49	27	54	43	19	38	59	51	(+6)	563
2014	37	38	52	42	24	36	37	30	49	38	36	43	(-6)	456
2015 <sup>(2)</sup>	37	46	42	38	52	37	32	49						
<b>Robbery</b>														
2012	33	38	57	19	50	32	17	32	36	47	24	33	(+1)	419
2013	44	36	33	33	31	40	27	41	48	49	29	34	(+7)	452
2014	50	28	26	13	11	9	12	9	14	16	11	13	(-35)	177
2015 <sup>(2)</sup>	20	10	20	18	18	18	10	8						
<b>Aggravated Assault</b>														
2012	91	95	110	104	118	121	115	123	114	124	106	101	(+14)	1336
2013	103	116	102	121	119	76	122	98	103	104	110	104	(+24)	1302
2014	128	109	137	109	113	116	130	121	100	106	87	108	(+29)	1393
2015 <sup>(2)</sup>	107	105	99	115	117	99	120	130						
<b>Burglary/Theft /Larceny</b>														
2012	141	134	178	160	156	121	175	144	119	114	106	133	(+13)	1694
2013	139	127	138	162	147	144	148	147	130	167	110	157	(+10)	1726
2014	122	140	162	182	167	109	132	145	148	205	127	172	(+17)	1928
2015 <sup>(2)</sup>	144	159	243	185	165	177	119	125						
<b>Motor Vehicle Theft</b>														
2012	18	19	15	5	13	7	10	19	11	10	7	12	(-6)	140
2013	17	14	12	15	11	9	16	10	17	19	9	16	(-3)	162
2014	13	15	24	23	19	10	16	6	13	16	10	33	(+3)	201
2015 <sup>(2)</sup>	22	26	34	21	23	21	12	20						
<b>Controlled Substance</b>														
2012	57	102	147	88	93	152	116	85	75	90	53	51	(-1)	1108
2013	88	69	82	62	95	94	66	86	58	130	82	112	(0)	1024
2014	74	87	116	142	104	80	68	84	74	99	81	82	(+7)	1098
2015 <sup>(2)</sup>	77	91	90	110	104	115	62	63						
<b>Other</b>														
2012	51	64	58	61	80	70	65	65	53	74	64	66	(-22)	749
2013	61	77	59	72	71	56	55	88	71	70	70	68	(-44)	774
2014	73	77	65	98	100	71	99	85	75	93	96	86	(-8)	1010
2015 <sup>(2)</sup>	111	93	99	84	83	100	80	94						
<b>Criminal RALJ</b>														
2012	16	19	12	11	19	17	12	21	10	25	14	16	(0)	192
2013	14	12	14	14	20	14	10	24	10	14	13	21	(+1)	181
2014	12	18	13	10	9	14	13	21	12	16	14	19	(+1)	172
2015 <sup>(2)</sup>	3	14	17	14	20	17	20	23						
<b>KNT Filing as % of Total</b>														
2012	41%	41%	39%	40%	43%	39%	43%	45%	41%	45%	47%	47%		42%
2013	43%	46%	44%	46%	46%	39%	41%	35%	43%	41%	38%	37%		42%
2014	46%	47%	48%	47%	46%	44%	43%	46%	43%	50%	46%	46%		45%
2015 <sup>(2)</sup>	46%	47%	48%	42%	44%	44%	42%	49%						

(\*) The highest crime category in a case's history is used to classify cases. For example, a case charged with homicide at any time in the case's history is reported as a homicide regardless of whether the charge is reduced at resolution.

(1) "ADJ" = year-end adjustment.

(2) Reflects all documents received by 09/15/2015.

Table 2. Monthly Criminal Case Resolutions by Crime Category  
King County Superior Court

	Jan	Feb	Mar	Apr	May	Jun	Jul	Aug	Sep	Oct	Nov	Dec	ADJ <sup>(1)</sup>	Annual
<b>Total</b>														
2012	388	447	520	502	501	521	481	492	438	558	470	446	(+18)	5782
2013	552	484	546	478	533	422	526	551	496	538	418	462	(+13)	6019
2014	495	495	528	490	513	486	584	474	523	605	437	526	(+11)	6167
2015 <sup>(2)</sup>	547	445	560	680	529	578	567	526						
<b>Homicide</b>														
2012	1	5	2	6	3	5	4	1	5	2	2	5	(0)	41
2013	3	3	3	5	10	7	3	4	2	8	4	8	(+1)	61
2014	2	5	6	6	3	1	3	2	5	2	3	6	(+1)	45
2015 <sup>(2)</sup>	3	2	5	7	5	6	4	5						
<b>Sex Crime</b>														
2012	37	27	37	39	33	38	33	47	31	56	28	25	(+4)	435
2013	34	39	39	47	43	36	33	54	45	47	29	27	(0)	473
2014	40	47	40	36	50	34	39	34	36	42	20	34	(-1)	451
2015 <sup>(2)</sup>	28	29	36	42	42	33	46	36						
<b>Robbery</b>														
2012	31	42	34	38	32	52	33	37	29	33	27	25	(0)	413
2013	42	30	40	32	36	38	38	35	45	29	39	28	(+1)	433
2014	43	41	41	24	24	17	26	25	15	14	14	23	(-44)	263
2015 <sup>(2)</sup>	15	14	19	13	18	27	23	19						
<b>Aggravated Assault</b>														
2012	74	96	137	111	126	99	108	85	94	123	128	107	(+3)	1291
2013	102	109	132	98	127	86	120	108	97	138	89	83	(0)	1289
2014	101	103	113	112	104	107	125	119	103	153	129	112	(+17)	1398
2015 <sup>(2)</sup>	126	96	118	136	124	106	110	83						
<b>Burglary/Theft /Larceny</b>														
2012	81	116	112	132	124	134	133	141	100	132	103	115	(+3)	1426
2013	148	135	137	113	137	106	148	149	136	124	109	127	(+11)	1580
2014	123	133	150	125	141	122	171	126	171	149	115	145	(+7)	1678
2015 <sup>(2)</sup>	138	122	176	224	141	189	165	181						
<b>Motor Vehicle Theft</b>														
2012	12	8	13	14	20	7	7	17	11	11	9	8	(+1)	138
2013	15	7	13	12	14	8	13	9	13	14	8	6	(0)	132
2014	14	16	8	16	15	28	11	11	13	16	16	13	(0)	177
2015 <sup>(2)</sup>	13	21	14	20	19	24	13	16						
<b>Controlled Substance – Non Drug Court</b>														
2012	69	67	79	76	81	71	81	79	82	93	57	78	(+11)	916
2013	104	61	70	64	75	46	70	74	71	62	49	81	(-2)	825
2014	69	62	74	72	65	73	86	70	81	94	61	83	(+1)	891
2015 <sup>(2)</sup>	85	64	78	116	68	76	93	75						
<b>Drug Court</b>														
2012	22	11	21	16	10	22	14	16	17	22	23	2	(0)	204
2013	21	21	30	27	18	20	24	29	20	27	12	8	(0)	261
2014	20	25	14	15	17	22	20	18	14	21	12	8	(+4)	210
2015 <sup>(2)</sup>	30	14	16	13	18	17	15	21						
<b>Other</b>														
2012	45	62	68	60	53	76	54	55	51	73	69	67	(-1)	732
2013	70	66	70	65	62	56	61	71	55	77	59	72	(-5)	786
2014	66	54	67	73	75	64	87	57	72	97	60	94	(+27)	893
2015 <sup>(2)</sup>	90	71	84	91	78	79	86	79						
<b>Criminal RALJ</b>														
2012	16	13	17	10	19	17	14	14	18	13	24	14	(-3)	186
2013	13	13	12	15	11	19	16	18	12	12	20	22	(-4)	179
2014	17	9	15	11	19	18	16	12	13	17	7	8	(-1)	161
2015 <sup>(2)</sup>	19	12	14	18	16	21	12	11						
<b>KNT as % of Total</b>														
2012	41%	45%	44%	41%	43%	46%	39%	43%	44%	39%	42%	41%		42%
2013	44%	40%	46%	44%	45%	38%	41%	49%	42%	38%	41%	41%		42%
2014	38%	45%	40%	40%	42%	49%	44%	46%	49%	44%	43%	43%		42%
2015 <sup>(2)</sup>	46%	46%	52%	55%	50%	52%	43%	47%						

The highest crime category in a case's history is used to classify cases. For example, a case charged with homicide at any time in the case's history is reported as a homicide regardless of whether the charge is reduced at resolution.

- (1) "ADJ" = year-end adjustment.
- (2) Reflects all documents received by 09/15/2015.
- (3) "Controlled Substance - Non Drug Court" are drug related cases that have never been accepted into drug court.
- (4) "Controlled Substance - Drug Court" are drug related cases that have been formally accepted into drug court (identified by "Order of Participation").

Table 3. Number of Cases Resolved and Resolution Category  
King County Superior Court

Crime Category (*)	Sep 2014	Oct 2014	Nov 2014	Dec 2014	Jan 2015	Feb 2015	Mar 2015	Apr 2015	May 2015	Jun 2015	Jul 2015	Aug 2015
<b>Homicide</b>	<b>5</b>	<b>2</b>	<b>3</b>	<b>6</b>	<b>3</b>	<b>2</b>	<b>5</b>	<b>7</b>	<b>5</b>	<b>6</b>	<b>4</b>	<b>5</b>
Resolved by Jury Trial	0	2	1	1	0	0	2	0	1	1	2	0
Resolved by Non-Jury Trial	0	0	0	1	0	0	0	0	0	0	0	0
Resolved by Guilty Plea	5	0	2	4	3	2	3	5	3	3	2	5
Dismissal	0	0	0	0	0	0	0	2	1	2	0	0
Others	0	0	0	0	0	0	0	0	0	0	0	0
<b>Sex Crime</b>	<b>36</b>	<b>42</b>	<b>20</b>	<b>34</b>	<b>28</b>	<b>29</b>	<b>36</b>	<b>42</b>	<b>42</b>	<b>33</b>	<b>46</b>	<b>36</b>
Resolved by Jury Trial	2	3	3	2	1	2	4	1	3	1	1	3
Resolved by Non-Jury Trial	0	1	0	0	0	0	0	0	0	0	0	0
Resolved by Guilty Plea	28	35	15	28	24	22	26	36	35	29	42	30
Dismissal	6	3	2	4	3	5	6	5	4	3	3	3
Others	0	0	0	0	0	0	0	0	0	0	0	0
<b>Robbery</b>	<b>15</b>	<b>14</b>	<b>14</b>	<b>23</b>	<b>15</b>	<b>14</b>	<b>19</b>	<b>13</b>	<b>18</b>	<b>27</b>	<b>23</b>	<b>19</b>
Resolved by Jury Trial	0	1	0	0	0	1	0	0	0	1	0	0
Resolved by Non-Jury Trial	0	0	0	0	0	0	0	1	0	0	0	0
Resolved by Guilty Plea	14	11	14	19	15	12	19	12	14	23	23	19
Dismissal	1	2	0	4	0	1	0	0	4	3	0	0
Others	0	0	0	0	0	0	0	0	0	0	0	0
<b>Aggravated Assault</b>	<b>103</b>	<b>153</b>	<b>129</b>	<b>112</b>	<b>126</b>	<b>96</b>	<b>118</b>	<b>136</b>	<b>124</b>	<b>106</b>	<b>110</b>	<b>83</b>
Resolved by Jury Trial	6	5	7	3	5	0	6	7	7	2	4	7
Resolved by Non-Jury Trial	0	1	0	0	0	0	0	0	0	0	0	0
Resolved by Guilty Plea	88	122	111	96	104	80	89	118	98	84	89	55
Dismissal	9	25	10	13	16	16	23	11	19	20	17	21
Others	0	0	1	0	1	0	0	0	0	0	0	0
<b>Burglary/Theft/Larceny</b>	<b>171</b>	<b>149</b>	<b>115</b>	<b>145</b>	<b>138</b>	<b>122</b>	<b>176</b>	<b>224</b>	<b>141</b>	<b>189</b>	<b>165</b>	<b>181</b>
Resolved by Jury Trial	2	3	2	3	5	3	2	3	2	4	1	3
Resolved by Non-Jury Trial	1	0	0	1	0	0	0	1	0	0	0	0
Resolved by Guilty Plea	151	130	104	126	113	110	152	201	124	166	153	163
Dismissal	17	16	9	15	20	9	22	19	15	19	11	15
Others	0	0	0	0	0	0	0	0	0	0	0	0
<b>Motor Vehicle Theft</b>	<b>13</b>	<b>16</b>	<b>16</b>	<b>13</b>	<b>13</b>	<b>21</b>	<b>14</b>	<b>20</b>	<b>19</b>	<b>24</b>	<b>13</b>	<b>16</b>
Resolved by Jury Trial	0	0	1	0	0	1	0	0	0	1	0	0
Resolved by Non-Jury Trial	0	0	0	0	0	0	0	0	0	0	0	0
Resolved by Guilty Plea	13	11	13	11	11	17	14	18	15	21	12	16
Dismissal	0	5	2	2	2	3	0	2	4	2	1	0
Others	0	0	0	0	0	0	0	0	0	0	0	0
<b>Controlled Substance - Non Drug Court<sup>(1)</sup></b>	<b>81</b>	<b>94</b>	<b>61</b>	<b>83</b>	<b>85</b>	<b>64</b>	<b>78</b>	<b>116</b>	<b>68</b>	<b>76</b>	<b>93</b>	<b>75</b>
Resolved by Jury Trial	0	0	1	3	3	3	0	3	4	0	0	0
Resolved by Non-Jury Trial	0	3	0	1	0	0	0	0	0	0	0	0
Resolved by Guilty Plea	69	82	51	63	61	50	69	89	39	58	72	61
Dismissal	12	9	9	16	21	11	9	24	25	18	21	14
Others	0	0	0	0	0	0	0	0	0	0	0	0
<b>Drug Court<sup>(2)</sup></b>	<b>14</b>	<b>21</b>	<b>12</b>	<b>8</b>	<b>30</b>	<b>14</b>	<b>16</b>	<b>13</b>	<b>18</b>	<b>17</b>	<b>15</b>	<b>21</b>
Resolved by Non-Jury Trial	0	11	4	3	2	4	3	0	1	0	3	2
Resolved by Guilty Plea	1	5	2	5	4	3	3	2	3	3	0	2
Dismissal	13	5	6	0	24	7	10	11	14	14	12	17
Others	0	0	0	0	0	0	0	0	0	0	0	0
<b>Other</b>	<b>72</b>	<b>97</b>	<b>61</b>	<b>94</b>	<b>90</b>	<b>71</b>	<b>84</b>	<b>91</b>	<b>68</b>	<b>79</b>	<b>86</b>	<b>79</b>
Resolved by Jury Trial	1	4	2	5	2	4	10	3	4	4	5	2
Resolved by Non-Jury Trial	0	2	1	1	0	0	1	0	0	1	0	0
Resolved by Guilty Plea	54	67	45	63	68	51	50	66	39	63	63	61
Dismissal	17	23	12	20	20	16	22	21	25	11	18	14
Others	0	1	0	5	0	0	1	1	0	0	0	2
<b>Criminal RALJ</b>	<b>13</b>	<b>17</b>	<b>7</b>	<b>8</b>	<b>19</b>	<b>12</b>	<b>14</b>	<b>18</b>	<b>16</b>	<b>21</b>	<b>12</b>	<b>11</b>
RALJ Decision	7	14	5	6	10	11	11	13	9	16	7	4
Dismissal	5	3	2	2	9	1	3	5	6	5	4	6
Others	1	0	0	0	0	0	0	0	1	0	1	1

(\*) The highest crime category in a case's history is used to classify cases.

Reflects all documents received by 09/15/2015.

(1) "Controlled Substance - Non Drug Court" are drug related cases that have never been accepted into drug court.

(2) "Controlled Substance - Drug Court" are drug related cases that have been formally accepted into drug court (identified by "Order of Participation").

(3) DV Subset includes cases with a DV flag in at least one of the charges within the specific crime category at the time of the reporting.

Table 4. Age (days) of Resolved Cases  
King County Superior Court

Crime Category <sup>(*)</sup>	Sep 2014	Oct 2014	Nov 2014	Dec 2014	Jan 2015	Feb 2015	Mar 2015	Apr 2015	May 2015	Jun 2015	Jul 2015	Aug 2015
<b>Homicide <sup>(**)</sup></b>												
50% Cases Resolved by Day	297	1254	330	567	314	201	905	379	245	588	348	517
90% Cases Resolved by Day	375	1731	390	897	433	218	1618	974	412	1456	1306	675
Average Time (days)	301	1254	313	566	299	201	919	435	228	699	556	489
<b>Sex Crime</b>												
50% Cases Resolved by Day	160	145	149	205	154	190	185	168	226	118	202	191
90% Cases Resolved by Day	395	525	672	417	390	356	556	528	497	371	365	549
Average Time (days)	180	213	230	243	186	173	241	228	255	169	193	250
<b>Robbery</b>												
50% Cases Resolved by Day	79	140	114	86	99	73	82	150	82	97	116	91
90% Cases Resolved by Day	502	260	292	309	341	302	367	282	301	218	274	195
Average Time (days)	151	187	136	185	133	120	124	199	114	110	145	108
<b>Aggravated Assault</b>												
50% Cases Resolved by Day	91	116	106	105	115	119	102	94	106	122	93	89
90% Cases Resolved by Day	273	263	321	259	316	321	291	294	351	343	267	268
Average Time (days)	129	143	172	131	176	147	153	138	184	163	130	139
<b>Burglary/Theft/Larceny</b>												
50% Cases Resolved by Day	116	101	111	108	110	117	119	89	106	92	102	110
90% Cases Resolved by Day	281	279	291	267	321	274	318	269	226	229	207	263
Average Time (days)	147	141	141	133	151	158	153	129	122	122	118	132
<b>Motor Vehicle Theft</b>												
50% Cases Resolved by Day	64	125	112	143	118	70	71	77	64	88	62	100
90% Cases Resolved by Day	114	235	170	340	338	232	318	259	180	127	150	152
Average Time (days)	74	129	102	172	132	115	141	118	75	98	72	103
<b>Controlled Substance</b>												
50% Cases Resolved by Day	138	128	126	133	125	126	145	145	95	100	113	111
90% Cases Resolved by Day	317	309	280	379	273	265	318	342	238	255	254	296
Average Time (days)	159	167	137	181	144	169	179	167	156	146	128	151
<b>Drug Court <sup>(2)</sup></b>												
50% Cases Resolved by Day	540	475	684	425	577	497	595	621	573	474	510	567
90% Cases Resolved by Day	1216	841	1503	764	707	835	1021	828	947	700	1127	699
Average Time (days)	735	533	844	484	567	512	611	666	622	146	583	575
<b>Other</b>												
50% Cases Resolved by Day	95	103	109	103	131	102	104	92	83	102	107	97
90% Cases Resolved by Day	214	293	254	218	336	299	344	279	231	363	245	288
Average Time (days)	217	144	122	116	155	139	156	241	103	304	129	132
<b>Criminal RALJ</b>												
50% Cases Resolved by Day	219	239	352	231	371	294	237	253	226	288	239	253
90% Cases Resolved by Day	354	350	534	437	784	631	574	687	355	412	350	438
Average Time (days)	238	261	373	248	469	376	340	318	235	304	263	250

(\*) The highest crime category in a case's history is used to classify cases. For example, a case charged with homicide at any time during the case's history is reported as a homicide regardless of whether the charge is reduced at resolution.

(\*\*) Due to small number of resolutions in this category, the age statistics for homicides are expected to vary considerably.

Reflects all documents received by **09/15/2015**.

(1) "Controlled Substance - Non Drug Court" are drug related cases that have never been accepted into drug court.

(2) "Controlled Substance - Drug Court" are drug related cases that have been formally accepted into drug court (identified by "Order of Participation").

(3) DV Subset includes cases with a DV flag in at least one of the charges within the specific crime category at the time of the reporting.



Table 5. Pending Criminal Cases  
King County Superior Court

Crime Category (*)	Aug 2014	Sep 2014	Oct 2014	Nov 2014	Dec 2014	Jan 2015	Feb 2015	Mar 2015	Apr 2015	May 2015	Jun 2015	Jul 2015	Aug 2015
<b>Total</b>													
Previous Pending	3028	3060	3061	3019	2982	3021	2900	2954	3048	2935	3037	3020	2937
New Filing (+)	506	487	590	468	558	525	544	647	590	582	590	458	518
Resolved (-)	474	523	605	437	526	547	445	560	680	529	578	567	526
<b>End Pending</b>	<b>3060</b>	<b>3061</b>	<b>3019</b>	<b>2982</b>	<b>3021</b>	<b>2900</b>	<b>2954</b>	<b>3048</b>	<b>2935</b>	<b>3037</b>	<b>3020</b>	<b>2937</b>	<b>2910</b>
<b>Homicide</b>													
Previous Pending	73	73	67	65	66	65	66	65	62	59	57	58	58
New Filing (+)	5	2	1	6	2	4	0	3	5	0	6	3	6
Resolved (-)	2	5	2	3	6	3	2	5	7	5	6	4	5
<b>End Pending</b>	<b>71</b>	<b>67</b>	<b>65</b>	<b>66</b>	<b>65</b>	<b>66</b>	<b>65</b>	<b>62</b>	<b>59</b>	<b>57</b>	<b>58</b>	<b>58</b>	<b>57</b>
<b>Sex Crime</b>													
Previous Pending	267	263	259	252	264	270	270	270	278	273	268	274	264
New Filing (+)	30	49	38	36	43	37	46	42	38	52	37	32	49
Resolved (-)	34	36	42	20	34	28	29	36	42	42	33	46	36
<b>End Pending</b>	<b>263</b>	<b>259</b>	<b>252</b>	<b>264</b>	<b>270</b>	<b>270</b>	<b>270</b>	<b>278</b>	<b>273</b>	<b>268</b>	<b>274</b>	<b>264</b>	<b>272</b>
<b>Robbery</b>													
Previous Pending	121	91	88	87	81	65	61	59	60	67	70	67	60
New Filing (+)	9	14	16	11	13	20	10	20	18	18	18	10	8
Resolved (-)	25	15	14	14	23	15	14	19	13	18	27	23	19
<b>End Pending</b>	<b>91</b>	<b>88</b>	<b>87</b>	<b>81</b>	<b>65</b>	<b>61</b>	<b>59</b>	<b>60</b>	<b>67</b>	<b>70</b>	<b>67</b>	<b>60</b>	<b>60</b>
<b>Aggravated Assault</b>													
Previous Pending	555	549	569	523	487	504	470	467	463	443	454	468	455
New Filing (+)	121	100	106	87	108	107	105	99	115	117	99	120	130
Resolved (-)	119	103	153	129	112	126	96	118	136	124	106	110	83
<b>End Pending</b>	<b>549</b>	<b>569</b>	<b>523</b>	<b>487</b>	<b>504</b>	<b>470</b>	<b>467</b>	<b>463</b>	<b>443</b>	<b>454</b>	<b>468</b>	<b>455</b>	<b>493</b>
<b>Burglary/Theft/Larceny</b>													
Previous Pending	700	726	705	720	710	719	686	713	779	744	795	762	737
New Filing (+)	145	148	205	127	172	144	159	246	185	165	177	119	125
Resolved (-)	126	171	149	115	145	138	122	176	224	141	189	165	181
<b>End Pending</b>	<b>726</b>	<b>705</b>	<b>720</b>	<b>710</b>	<b>719</b>	<b>686</b>	<b>713</b>	<b>779</b>	<b>744</b>	<b>795</b>	<b>762</b>	<b>737</b>	<b>688</b>
<b>Motor Vehicle Theft</b>													
Previous Pending	72	72	73	70	61	70	70	63	89	85	93	79	77
New Filing (+)	6	13	16	10	33	22	26	34	21	23	21	12	20
Resolved (-)	11	14	16	12	13	13	21	14	20	19	24	13	16
<b>End Pending</b>	<b>72</b>	<b>73</b>	<b>70</b>	<b>61</b>	<b>70</b>	<b>70</b>	<b>63</b>	<b>89</b>	<b>85</b>	<b>93</b>	<b>79</b>	<b>77</b>	<b>78</b>
<b>Controlled Substance - Non Drug Court (1)</b>													
Previous Pending	465	475	466	466	456	427	416	433	447	393	445	431	417
Resolved (-)	70	81	94	61	83	85	64	78	116	68	76	93	75
<b>End Pending</b>	<b>475</b>	<b>466</b>	<b>466</b>	<b>456</b>	<b>427</b>	<b>416</b>	<b>433</b>	<b>447</b>	<b>393</b>	<b>445</b>	<b>431</b>	<b>417</b>	<b>390</b>
<b>Drug Court (2)</b>													
Previous Pending	252	256	268	268	284	293	289	305	300	293	281	300	300
New Filing (+)	14	20	20	31	20	26	21	14	17	2	28	15	20
Resolved (-)	18	14	21	12	8	30	14	16	13	18	17	15	21
<b>End Pending</b>	<b>256</b>	<b>268</b>	<b>268</b>	<b>284</b>	<b>293</b>	<b>289</b>	<b>305</b>	<b>300</b>	<b>293</b>	<b>281</b>	<b>300</b>	<b>300</b>	<b>299</b>
<b>Other</b>													
Previous Pending	394	418	428	431	429	453	435	442	447	441	432	443	424
New Filing (+)	85	75	93	96	86	111	93	99	84	83	100	80	94
Resolved (-)	57	72	97	60	94	90	71	84	91	78	79	86	79
<b>End Pending</b>	<b>418</b>	<b>428</b>	<b>431</b>	<b>429</b>	<b>453</b>	<b>435</b>	<b>442</b>	<b>447</b>	<b>441</b>	<b>432</b>	<b>443</b>	<b>424</b>	<b>416</b>
<b>Criminal RALJ</b>													
Previous Pending	129	139	138	137	144	155	137	137	140	137	142	138	145
New Filing (+)	21	12	16	14	19	3	14	17	14	20	17	20	23
Resolved (-)	12	13	17	7	8	19	12	14	18	16	21	12	11
<b>End Pending</b>	<b>139</b>	<b>138</b>	<b>137</b>	<b>144</b>	<b>155</b>	<b>137</b>	<b>137</b>	<b>140</b>	<b>137</b>	<b>142</b>	<b>138</b>	<b>145</b>	<b>157</b>
<b>Total Pending Caseload</b>													
SEA (%)	52%	52%	51%	51%	51%	51%	51%	52%	55%	55%	57%	57%	
KNT (%)	48%	48%	49%	49%	49%	49%	49%	48%	45%	45%	43%	43%	

(\*) Information from filing to the reporting time is used to determine crime category for pending cases. The category for a case in this table is the highest crime category since filing. For example, a case initially charged with homicide is reported as a homicide regardless of whether or not the charge is reduced since filing. On the other hand, if the charge for a case is upgraded later, then the reporting category in later reports will reflect the upgraded (higher) crime category.

Reflects all documents received by 09/15/2015. Drug court cases are identified by docket code "ORPAR" (Order for Participation).

Table 6. Age of Pending Criminal Cases  
King County Superior Court

Crime Category (*)	Aug 2014	Sep 2014	Oct 2014	Nov 2014	Dec 2014	Jan 2015	Feb 2015	Mar 2015	Apr 2015	May 2015	Jun 2015	Jul 2015	Aug 2015
<b>Total</b>													
<b>Age (days)</b>													
Median (50 <sup>th</sup> percentile)	118	121	114	123	121	108	108	98	94	95	98	106	110
95 <sup>th</sup> percentile	759	765	760	785	771	550	557	525	526	537	549	565	567
<b># of Cases in Age Interval</b>													
0 - 60 days (0 - 2 months)	895	885	930	884	868	936	963	1103	1064	1030	1028	923	877
61-120 days (3 - 4 months)	659	640	621	593	640	636	626	647	613	740	717	689	698
121-180 days (5 - 6 months)	481	455	415	391	413	376	419	391	388	396	396	445	439
181-270 days (7 - 9 months)	370	406	386	413	365	365	359	339	322	322	351	326	346
> 270 days (> 9 months)	655	675	667	701	735	587	587	568	548	549	528	554	550
<b>Homicide</b>													
<b>Age (days)</b>													
Median (50 <sup>th</sup> percentile)	244	215	240	262	262	237	293	296	309	340	333	344	326
95 <sup>th</sup> percentile	1391	1421	1240	1270	1124	1203	1321	1214	1421	1452	1305	1336	1367
<b># of Cases in Age Interval</b>													
0 - 60 days (0 - 2 months)	10	6	4	4	11	10	4	2	4	4	6	8	6
61-120 days (3 - 4 months)	9	13	9	5	4	7	11	10	4	2	5	4	6
121-180 days (5 - 6 months)	13	6	7	13	9	3	4	6	9	8	5	2	5
181-270 days (7 - 9 months)	7	11	15	13	10	15	13	10	6	6	10	12	7
> 270 days (> 9 months)	32	31	30	31	31	31	33	34	36	37	32	32	33
<b>Sex Crime</b>													
<b>Age (days)</b>													
Median (50 <sup>th</sup> percentile)	154	155	138	142	136	125	130	128	130	130	134	129	131
95 <sup>th</sup> percentile	735	775	796	740	681	601	586	524	520	514	530	536	530
<b># of Cases in Age Interval</b>													
0 - 60 days (0 - 2 months)	60	58	68	62	68	78	63	69	69	70	71	70	71
61-120 days (3 - 4 months)	47	55	48	49	56	51	59	67	53	54	58	51	59
121-180 days (5 - 6 months)	43	30	32	45	43	41	49	42	48	53	38	38	44
181-270 days (7 - 9 months)	45	43	40	33	34	38	37	43	46	43	49	47	41
> 270 days (> 9 months)	68	73	64	75	69	62	62	57	57	48	58	58	57
<b>Robbery</b>													
<b>Age (days)</b>													
Median (50 <sup>th</sup> percentile)	173	197	179	155	79	55	61	63	70	69	77	70	71
95 <sup>th</sup> percentile	769	799	788	818	849	488	583	581	428	459	468	287	318
<b># of Cases in Age Interval</b>													
0 - 60 days (0 - 2 months)	19	15	28	24	22	32	29	26	32	33	24	25	25
61-120 days (3 - 4 months)	12	13	12	9	15	16	12	17	18	16	25	17	12
121-180 days (5 - 6 months)	15	13	5	9	4	2	10	9	7	10	7	10	13
181-270 days (7 - 9 months)	25	25	15	13	3	1	0	1	4	6	7	4	4
> 270 days (> 9 months)	20	22	27	26	21	10	8	7	6	5	4	4	6
<b>Aggravated Assault</b>													
<b>Age (days)</b>													
Median (50 <sup>th</sup> percentile)	91	97	87	97	100	94	87	76	78	74	69	79	78
95 <sup>th</sup> percentile	487	505	535	565	517	373	388	407	407	417	401	352	330
<b># of Cases in Age Interval</b>													
0 - 60 days (0 - 2 months)	194	205	191	163	167	177	184	193	187	201	211	185	203
61-120 days (3 - 4 months)	132	130	121	117	120	99	104	109	108	111	114	126	139
121-180 days (5 - 6 months)	89	81	73	63	74	76	68	50	53	61	65	68	68
181-270 days (7 - 9 months)	62	82	67	68	57	58	53	55	41	36	41	38	46
> 270 days (> 9 months)	72	71	71	76	86	60	58	56	54	45	37	38	37
<b>Burglary/Theft/Larceny</b>													
<b>Age (days)</b>													
Median (50 <sup>th</sup> percentile)	103	88	86	92	85	79	79	65	65	73	79	89	97
95 <sup>th</sup> percentile	585	615	623	658	588	370	327	316	314	321	306	332	350
<b># of Cases in Age Interval</b>													
0 - 60 days (0 - 2 months)	261	251	272	275	262	280	292	364	349	327	297	250	229
121-180 days (5 - 6 months)	166	153	178	160	177	190	191	199	171	239	238	226	184
61-120 days (3 - 4 months)	112	111	92	88	99	78	94	102	108	106	106	129	136
181-270 days (7 - 9 months)	77	82	67	76	71	68	75	58	66	66	71	75	81
> 270 days (> 9 months)	110	108	111	111	110	70	61	56	50	57	50	57	58

(\*) The highest crime category since filing is used to classify cases. For example, a case initially charged with homicide is reported as a homicide regardless of whether or not the charge is reduced since filing. On the other hand, if the charge for a case is upgraded later, then the reporting category in later reports will reflect the upgraded (higher) crime category.

Reflects all documents received by 09/15/2015.

- (1) "Controlled Substance - Non Drug Court" are drug related cases that have never been accepted into drug court.
- (2) "Controlled Substance - Drug Court" are drug related cases that have been formally accepted into drug court (identified by "Order of Participation").

Table 6 (cont.). Age of Pending Criminal Cases  
King County Superior Court

Crime Category (*)	Aug 2014	Sep 2014	Oct 2014	Nov 2014	Dec 2014	Jan 2015	Feb 2015	Mar 2015	Apr 2015	May 2015	Jun 2015	Jul 2015	Aug 2015
<b>Motor Vehicle Theft</b>													
<b>Age (days)</b>													
Median (50 <sup>th</sup> percentile)	89	120	121	117	84	56	54	35	58	70	82	80	95
95 <sup>th</sup> percentile	337	367	398	428	400	413	441	343	263	294	324	355	386
<b># of Cases in Age Interval</b>													
0 - 60 days (0 - 2 months)	27	20	21	18	30	36	35	58	47	40	34	29	29
61-120 days (3 - 4 months)	19	17	14	13	13	12	13	16	24	35	23	19	19
121-180 days (5 - 6 months)	12	15	15	7	9	7	3	7	7	11	12	18	15
181-270 days (7 - 9 months)	8	13	9	11	6	6	5	3	3	2	6	7	11
> 270 days (> 9 months)	6	8	11	12	12	9	7	5	4	5	4	4	4
<b>Controlled Substance - Non Drug Court<sup>(1)</sup></b>													
<b>Age (days)</b>													
Median (50 <sup>th</sup> percentile)	104	105	95	98	96	97	90	83	77	79	71	82	96
95 <sup>th</sup> percentile	776	806	837	922	953	416	339	366	345	366	387	409	415
<b># of Cases in Age Interval</b>													
0 - 60 days (0 - 2 months)	137	163	166	165	127	137	161	175	173	181	191	155	126
61-120 days (3 - 4 months)	129	103	97	108	127	118	102	96	92	120	97	118	127
121-180 days (5 - 6 months)	91	85	78	53	58	65	78	68	54	56	51	54	49
181-270 days (7 - 9 months)	41	40	57	56	49	52	49	49	39	45	51	42	39
> 270 days (> 9 months)	77	75	68	74	66	44	43	42	35	43	41	48	49
<b>Drug Court<sup>(2)</sup></b>													
<b>Age (days)</b>													
Median (50 <sup>th</sup> percentile)	354	357	360	369	374	369	380	387	399	421	429	434	428
95 <sup>th</sup> percentile	1032	1034	1060	966	997	939	995	996	1023	1038	1076	1068	1084
<b># of Cases in Age Interval</b>													
0 - 60 days (0 - 2 months)	0	1	3	2	0	3	2	3	3	0	3	4	2
61-120 days (3 - 4 months)	7	5	4	8	6	8	9	14	10	9	17	11	15
121-180 days (5 - 6 months)	34	28	16	18	17	17	23	17	12	14	21	22	23
181-270 days (7 - 9 months)	41	49	59	67	56	46	41	34	41	33	37	32	39
> 270 days (> 9 months)	174	185	186	189	214	215	230	232	227	225	222	231	220
<b>Other</b>													
<b>Age (days)</b>													
Median (50 <sup>th</sup> percentile)	90	91	95	109	111	89	87	79	81	95	93	94	87
95 <sup>th</sup> percentile	795	825	793	790	756	385	394	377	386	417	410	428	421
<b># of Cases in Age Interval</b>													
0 - 60 days (0 - 2 months)	154	135	149	141	148	165	176	182	171	140	156	162	146
61-120 days (3 - 4 months)	114	127	106	93	94	104	92	99	116	127	112	82	101
121-180 days (5 - 6 months)	53	66	74	72	70	55	63	61	58	61	74	79	61
181-270 days (7 - 9 months)	33	32	36	53	51	52	54	55	43	51	49	50	54
> 270 days (> 9 months)	32	68	66	70	90	59	57	50	53	53	52	51	54
<b>Criminal RALJ</b>													
<b>Age (days)</b>													
Median (50 <sup>th</sup> percentile)	166	154	144	144	146	164	166	158	170	165	133	135	124
95 <sup>th</sup> percentile	469	499	530	560	591	489	495	451	457	476	506	520	551
<b># of Cases in Age Interval</b>													
0 - 60 days (0 - 2 months)	33	31	28	30	33	18	17	31	29	34	35	35	40
61-120 days (3 - 4 months)	24	24	32	31	28	31	33	20	17	27	28	35	36
121-180 days (5 - 6 months)	19	20	23	23	30	32	27	29	32	16	17	25	25
181-270 days (7 - 9 months)	31	29	21	23	28	29	32	31	33	34	30	19	24
> 270 days (> 9 months)	32	34	33	37	36	27	28	29	26	31	28	31	32

(\*) The highest crime category since filing is used to classify cases. For example, a case initially charged with homicide is reported as a homicide regardless of whether or not the charge is reduced since filing. On the other hand, if the charge for a case is upgraded later, then the reporting category in later reports will reflect the upgraded (higher) crime category.

Reflects all documents received by 09/15/2015.

(1) "Controlled Substance - Non Drug Court" are drug related cases that have never been accepted into drug court.

(2) "Controlled Substance - Drug Court" are drug related cases that have been formally accepted into drug court (identified by "Order of Participation").

Table 7. Comparison between SEA/KNT: Filings, Resolutions, and Pending Caseload  
King County Superior Court

	Sep 2014	Oct 2014	Nov 2014	Dec 2014	Jan 2015	Feb 2015	Mar 2015	Apr 2015	May 2015	Jun 2015	Jul 2015	Aug 2015 <sup>(1)</sup>
<b>Total Filings</b>												
SEA - # of Cases Filed	278	296	255	303	283	291	339	341	325	332	264	266
KNT - # of Cases Filed	209	294	213	255	242	253	308	249	257	258	194	252
SEA %	57%	50%	54%	54%	54%	53%	52%	58%	56%	56%	58%	51%
KNT %	43%	50%	46%	46%	46%	47%	48%	42%	44%	44%	42%	49%
<b>Total Resolutions</b>												
SEA - # of Cases Resolved	259	323	242	296	273	228	259	296	256	265	315	262
KNT - # of Cases Resolved	250	261	183	222	244	203	285	371	255	296	237	243
SEA - Drug Court Cases Resolved	7	19	6	5	22	12	8	8	11	15	11	16
KNT - Drug Court Cases Resolved	7	2	6	3	8	2	8	5	7	2	4	5
SEA %	50%	53%	55%	56%	50%	51%	46%	44%	48%	46%	56%	50%
KNT %	48%	43%	42%	42%	45%	46%	51%	55%	48%	51%	42%	46%
SEA - Drug Court %	1%	3%	1%	1%	4%	3%	1%	1%	2%	3%	2%	3%
KNT - Drug Court %	1%	0%	1%	1%	1%	0%	1%	1%	1%	0%	1%	1%
<b>Total Pending</b>												
SEA - # of Cases Pending	1414	1384	1336	1360	1294	1314	1408	1424	1490	1512	1471	1435
KNT - # of Cases Pending	1379	1367	1362	1368	1317	1335	1340	1218	1266	1208	1166	1176
SEA - Drug Court Cases Pending	176	166	183	188	184	195	193	192	192	198	199	205
KNT - Drug Court Cases Pending	92	102	101	105	105	110	107	101	89	102	101	94
SEA %	46%	46%	45%	45%	45%	44%	46%	49%	49%	50%	50%	49%
KNT %	45%	45%	46%	45%	45%	45%	44%	42%	42%	40%	40%	40%
SEA - Drug Court %	6%	5%	6%	6%	6%	7%	6%	7%	6%	7%	7%	7%
KNT - Drug Court %	3%	3%	3%	3%	4%	4%	4%	3%	3%	3%	3%	3%

(1) Reflects all documents received by 09/15/2015.

(2) The number of judges does not include RJC chief judge and the criminal chief judge at SEA.

Table 8. Drug Court Statistics

King County Superior Court

Categories	Jul 2014	Aug 2014	Sep 2014	Oct 2014	Nov 2014	Dec 2014	Jan 2015	Feb 2015	Mar 2015	Apr 2015	May 2015	Jun 2015	Jul 2015	Aug 2015
Referrals - Total	50	52	36	46	31	31	38	24	33	52	54	56	27	43
Directly from PA	28	22	22	29	10	10	20	19	22	45	37	37	16	24
From Mainstream	22	30	14	17	21	21	18	5	11	7	17	19	11	19
Arraignments in Drug Court <sup>(1)</sup>	21	22	17	23	12	12	15	19	23	32	35	26	22	16
GP in Drug Court <sup>(2)</sup>	1	2	1	1	2	2	4	1	1	2	2	3	1	2
Return to mainstream <sup>(3)</sup>	22	17	15	21	9	9	17	14	8	12	9	17	7	6
Opt-in <sup>(4)</sup>	24	14	20	20	31	31	26	21	14	17	2	28	15	20
Graduations <sup>(5)</sup>	19	10	13	5	6	6	24	7	10	11	14	12	12	17
Terminations <sup>(6)</sup>	1	8	1	16	6	6	6	7	6	2	4	3	3	2

- (1) Arraignments held in drug court regardless opt-in status of the cases.
- (2) Guilty pleas entered in drug court before opt-in.
- (3) Referred to drug court but decision by court order to go to mainstream.
- (4) Opt-in reflects the court order of participation.
- (5) Graduations are dismissals of opted-in cases after the completion of program.
- (6) Terminations are cases that fail in drug court.