

King County Superior Court
Criminal Department Statistical Report

September 2015

Department of Judicial Administration
Prepared by: Shiquan Liao, Ph.D., Statistician

Release date: October 20, 2015

Report #: CRM-2015-09

Terminology

Age of Pending Case

Time (days) from filing to resolution, less suspense time if applicable.

Age of Resolved Case

Time (days) from filing to resolution, less suspense time if applicable.

End Pending

Number of pending cases at the end of reporting period.

Net Change in Pending

The change in number of pending cases (end pending minus previous pending).

Pending Case

A case is defined as pending if it is unresolved and not on suspense status.

Previous Pending

Number of pending cases at the beginning of reporting period.

Reactivated Case

A case returns to active from suspense status during the reporting period.

Resolution

A case is resolved if all issues in the complaint are fully adjudicated. However, a drug court case is reported as resolved only when dispositive document is also filed (completed).

Resolution Category

Five resolution categories are used to report resolution of criminal cases: jury trial (CVJV, AQJV), non-jury trial (CVCT, AQCT), guilty plea (GP, GPAT, GPJT), dismissal (DSM), and other (all other resolution codes). For criminal RALJ cases, the resolution categories are: RALJ decision (CDTA, CDTM, CDTR), dismissal (DSRM), and others (any other resolution codes).

Suspended Case

A case is placed in suspense status (removing from active) during the reporting period.

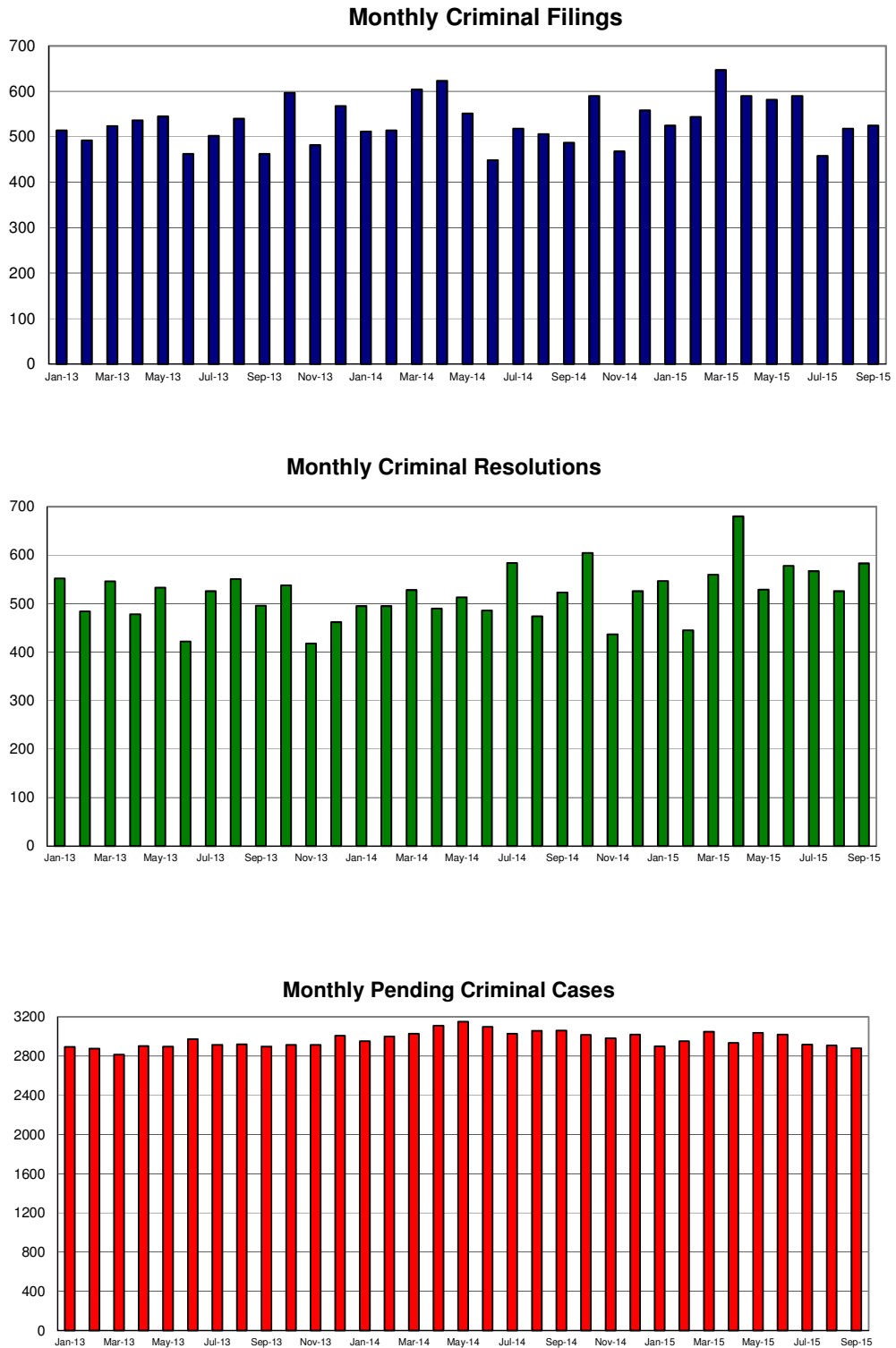
Suspense Status

A case is said to be on suspense status if it is on warrant or appeal.

Suspense Time

Time (days) a case is on suspense status.

Figure 1. Number of Criminal Filings, Resolutions and Pending Caseload by Month



Note: Starting January 2010, RALJ cases are included.

Figure 2. Crime Category as a Percentage of Total Filings by Year

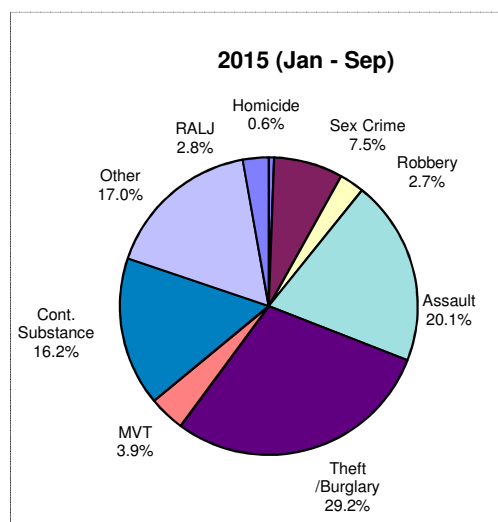
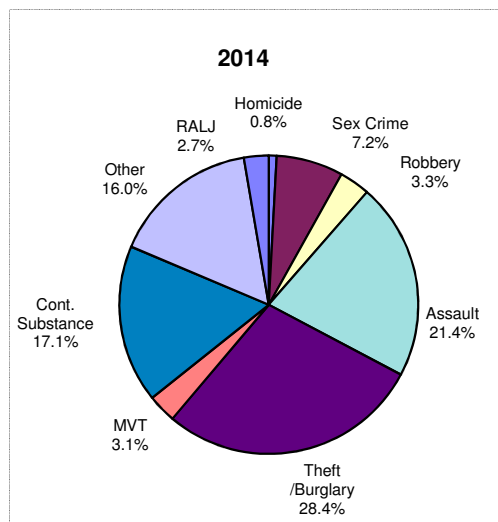
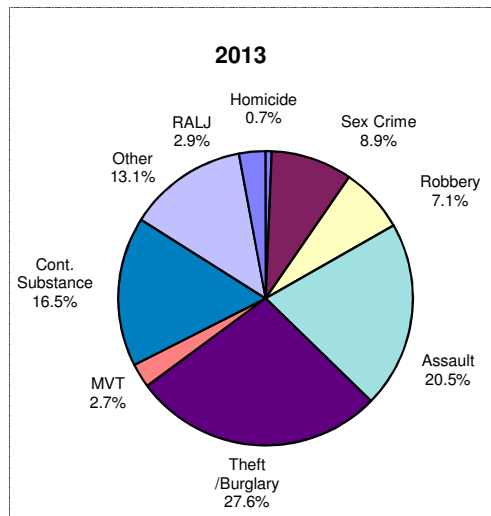


Table 1. Monthly Criminal New Filings by Crime Category ^(*)
King County Superior Court

	Jan	Feb	Mar	Apr	May	Jun	Jul	Aug	Sep	Oct	Nov	Dec	ADJ ⁽¹⁾	Annual
Total														
2012	445	522	618	512	576	544	555	543	458	507	410	443	(+2)	6135
2013	514	492	524	536	545	462	502	540	462	597	482	568	(+2)	6226
2014	512	514	604	623	551	449	518	506	487	590	468	558	(+6)	6383
2015 ⁽²⁾	525	544	647	590	582	590	458	518	525					
Homicide														
2012	4	2	7	4	7	2	7	7	7	3	6	4	(+2)	62
2013	3	2	5	3	2	2	4	3	6	6	0	5	(+1)	42
2014	3	2	9	4	4	4	11	5	2	1	6	2	(-2)	51
2015 ⁽²⁾	4	0	3	5	0	6	3	6	2					
Sex Crime														
2012	34	49	34	60	40	22	38	47	33	20	30	27	(+1)	435
2013	45	39	79	54	49	27	54	43	19	38	59	51	(+6)	563
2014	37	38	52	42	24	36	37	30	49	38	36	43	(-6)	456
2015 ⁽²⁾	37	46	42	38	52	37	32	49	40					
Robbery														
2012	33	38	57	19	50	32	17	32	36	47	24	33	(+1)	419
2013	44	36	33	33	31	40	27	41	48	49	29	34	(+7)	452
2014	50	28	26	13	11	9	12	9	14	16	11	13	(-35)	177
2015 ⁽²⁾	20	10	20	18	18	18	10	8	12					
Aggravated Assault														
2012	91	95	110	104	118	121	115	123	114	124	106	101	(+14)	1336
2013	103	116	102	121	119	76	122	98	103	104	110	104	(+24)	1302
2014	128	109	137	109	113	116	130	121	100	106	87	108	(+29)	1393
2015 ⁽²⁾	107	105	99	115	117	99	120	130	111					
Burglary/Theft /Larceny														
2012	141	134	178	160	156	121	175	144	119	114	106	133	(+13)	1694
2013	139	127	138	162	147	144	148	147	130	167	110	157	(+10)	1726
2014	122	140	162	182	167	109	132	145	148	205	127	172	(+17)	1928
2015 ⁽²⁾	144	159	243	185	165	177	119	125	136					
Motor Vehicle Theft														
2012	18	19	15	5	13	7	10	19	11	10	7	12	(-6)	140
2013	17	14	12	15	11	9	16	10	17	19	9	16	(-3)	162
2014	13	15	24	23	19	10	16	6	13	16	10	33	(+3)	201
2015 ⁽²⁾	22	26	34	21	23	21	12	20	16					
Controlled Substance														
2012	57	102	147	88	93	152	116	85	75	90	53	51	(-1)	1108
2013	88	69	82	62	95	94	66	86	58	130	82	112	(0)	1024
2014	74	87	116	142	104	80	68	84	74	99	81	82	(+7)	1098
2015 ⁽²⁾	77	91	90	110	104	115	62	63	94					
Other														
2012	51	64	58	61	80	70	65	65	53	74	64	66	(-22)	749
2013	61	77	59	72	71	56	55	88	71	70	70	68	(-44)	774
2014	73	77	65	98	100	71	99	85	75	93	96	86	(-8)	1010
2015 ⁽²⁾	111	93	99	84	83	100	80	94	102					
Criminal RALJ														
2012	16	19	12	11	19	17	12	21	10	25	14	16	(0)	192
2013	14	12	14	14	20	14	10	24	10	14	13	21	(+1)	181
2014	12	18	13	10	9	14	13	21	12	16	14	19	(+1)	172
2015 ⁽²⁾	3	14	17	14	20	17	20	23	12					
KNT Filing as % of Total														
2012	41%	41%	39%	40%	43%	39%	43%	45%	41%	45%	47%	47%		42%
2013	43%	46%	44%	46%	46%	39%	41%	35%	43%	41%	38%	37%		42%
2014	46%	47%	48%	47%	46%	44%	43%	46%	43%	50%	46%	46%		45%
2015 ⁽²⁾	46%	47%	48%	42%	44%	44%	42%	49%	44%					

(*) The highest crime category in a case's history is used to classify cases. For example, a case charged with homicide at any time in the case's history is reported as a homicide regardless of whether the charge is reduced at resolution.

(1) "ADJ" = year-end adjustment.

(2) Reflects all documents received by 10/15/2015.

Table 2. Monthly Criminal Case Resolutions by Crime Category
King County Superior Court

	Jan	Feb	Mar	Apr	May	Jun	Jul	Aug	Sep	Oct	Nov	Dec	ADJ ⁽¹⁾	Annual
Total														
2012	388	447	520	502	501	521	481	492	438	558	470	446	(+18)	5782
2013	552	484	546	478	533	422	526	551	496	538	418	462	(+13)	6019
2014	495	495	528	490	513	486	584	474	523	605	437	526	(+11)	6167
2015 ⁽²⁾	547	445	560	680	529	578	567	526	583					
Homicide														
2012	1	5	2	6	3	5	4	1	5	2	2	5	(0)	41
2013	3	3	3	5	10	7	3	4	2	8	4	8	(+1)	61
2014	2	5	6	6	3	1	3	2	5	2	3	6	(+1)	45
2015 ⁽²⁾	3	2	5	7	5	6	4	5	2					
Sex Crime														
2012	37	27	37	39	33	38	33	47	31	56	28	25	(+4)	435
2013	34	39	39	47	43	36	33	54	45	47	29	27	(0)	473
2014	40	47	40	36	50	34	39	34	36	42	20	34	(-1)	451
2015 ⁽²⁾	28	29	36	42	42	33	46	36	36					
Robbery														
2012	31	42	34	38	32	52	33	37	29	33	27	25	(0)	413
2013	42	30	40	32	36	38	38	35	45	29	39	28	(+1)	433
2014	43	41	41	24	24	17	26	25	15	14	14	23	(-44)	263
2015 ⁽²⁾	15	14	19	13	18	27	23	19	14					
Aggravated Assault														
2012	74	96	137	111	126	99	108	85	94	123	128	107	(+3)	1291
2013	102	109	132	98	127	86	120	108	97	138	89	83	(0)	1289
2014	101	103	113	112	104	107	125	119	103	153	129	112	(+17)	1398
2015 ⁽²⁾	126	96	118	136	124	106	110	83	128					
Burglary/Theft /Larceny														
2012	81	116	112	132	124	134	133	141	100	132	103	115	(+3)	1426
2013	148	135	137	113	137	106	148	149	136	124	109	127	(+11)	1580
2014	123	133	150	125	141	122	171	126	171	149	115	145	(+7)	1678
2015 ⁽²⁾	138	122	176	224	141	189	165	181	168					
Motor Vehicle Theft														
2012	12	8	13	14	20	7	7	17	11	11	9	8	(+1)	138
2013	15	7	13	12	14	8	13	9	13	14	8	6	(0)	132
2014	14	16	8	16	15	28	11	11	13	16	16	13	(0)	177
2015 ⁽²⁾	13	21	14	20	19	24	13	16	29					
Controlled Substance – Non Drug Court														
2012	69	67	79	76	81	71	81	79	82	93	57	78	(+11)	916
2013	104	61	70	64	75	46	70	74	71	62	49	81	(-2)	825
2014	69	62	74	72	65	73	86	70	81	94	61	83	(+1)	891
2015 ⁽²⁾	85	64	78	116	68	76	93	75	69					
Drug Court														
2012	22	11	21	16	10	22	14	16	17	22	23	2	(0)	204
2013	21	21	30	27	18	20	24	29	20	27	12	8	(0)	261
2014	20	25	14	15	17	22	20	18	14	21	12	8	(+4)	210
2015 ⁽²⁾	30	14	16	13	18	17	15	21	13					
Other														
2012	45	62	68	60	53	76	54	55	51	73	69	67	(-1)	732
2013	70	66	70	65	62	56	61	71	55	77	59	72	(-5)	786
2014	66	54	67	73	75	64	87	57	72	97	60	94	(+27)	893
2015 ⁽²⁾	90	71	84	91	78	79	86	79	108					
Criminal RALJ														
2012	16	13	17	10	19	17	14	14	18	13	24	14	(-3)	186
2013	13	13	12	15	11	19	16	18	12	12	20	22	(-4)	179
2014	17	9	15	11	19	18	16	12	13	17	7	8	(-1)	161
2015 ⁽²⁾	19	12	14	18	16	21	12	11	16					
KNT as % of Total														
2012	41%	45%	44%	41%	43%	46%	39%	43%	44%	39%	42%	41%		42%
2013	44%	40%	46%	44%	45%	38%	41%	49%	42%	38%	41%	41%		42%
2014	38%	45%	40%	40%	42%	49%	44%	46%	49%	44%	43%	43%		42%
2015 ⁽²⁾	46%	46%	52%	55%	50%	52%	43%	47%	45%					

The highest crime category in a case's history is used to classify cases. For example, a case charged with homicide at any time in the case's history is reported as a homicide regardless of whether the charge is reduced at resolution.

- (1) "ADJ" = year-end adjustment.
- (2) Reflects all documents received by 10/15/2015.
- (3) "Controlled Substance - Non Drug Court" are drug related cases that have never been accepted into drug court.
- (4) "Controlled Substance - Drug Court" are drug related cases that have been formally accepted into drug court (identified by "Order of Participation").

Table 3. Number of Cases Resolved and Resolution Category
King County Superior Court

Crime Category (*)	Oct 2014	Nov 2014	Dec 2014	Jan 2015	Feb 2015	Mar 2015	Apr 2015	May 2015	Jun 2015	Jul 2015	Aug 2015	Sep 2015
Homicide	2	3	6	3	2	5	7	5	6	4	5	2
Resolved by Jury Trial	2	1	1	0	0	2	0	1	1	2	0	0
Resolved by Non-Jury Trial	0	0	1	0	0	0	0	0	0	0	0	0
Resolved by Guilty Plea	0	2	4	3	2	3	5	3	3	2	5	1
Dismissal	0	0	0	0	0	0	2	1	2	0	0	0
Others	0	0	0	0	0	0	0	0	0	0	0	1
Sex Crime	42	20	34	28	29	36	42	42	33	46	36	36
Resolved by Jury Trial	3	3	2	1	2	4	1	3	1	1	3	2
Resolved by Non-Jury Trial	1	0	0	0	0	0	0	0	0	0	0	0
Resolved by Guilty Plea	35	15	28	24	22	26	36	35	29	42	30	32
Dismissal	3	2	4	3	5	6	5	4	3	3	3	2
Others	0	0	0	0	0	0	0	0	0	0	0	0
Robbery	14	14	23	15	14	19	13	18	27	23	19	14
Resolved by Jury Trial	1	0	0	0	1	0	0	0	1	0	0	0
Resolved by Non-Jury Trial	0	0	0	0	0	0	1	0	0	0	0	0
Resolved by Guilty Plea	11	14	19	15	12	19	12	14	23	23	19	14
Dismissal	2	0	4	0	1	0	0	4	3	0	0	0
Others	0	0	0	0	0	0	0	0	0	0	0	0
Aggravated Assault	153	129	112	126	96	118	136	124	106	110	83	128
Resolved by Jury Trial	5	7	3	5	0	6	7	7	2	4	7	5
Resolved by Non-Jury Trial	1	0	0	0	0	0	0	0	0	0	0	0
Resolved by Guilty Plea	122	111	96	104	80	89	118	98	84	89	55	109
Dismissal	25	10	13	16	16	23	11	19	20	17	21	14
Others	0	1	0	1	0	0	0	0	0	0	0	0
Burglary/Theft/Larceny	149	115	145	138	122	176	224	141	189	165	181	168
Resolved by Jury Trial	3	2	3	5	3	2	3	2	4	1	3	4
Resolved by Non-Jury Trial	0	0	1	0	0	0	1	0	0	0	0	1
Resolved by Guilty Plea	130	104	126	113	110	152	201	124	166	153	163	152
Dismissal	16	9	15	20	9	22	19	15	19	11	15	11
Others	0	0	0	0	0	0	0	0	0	0	0	0
Motor Vehicle Theft	16	16	13	13	21	14	20	19	24	13	16	29
Resolved by Jury Trial	0	1	0	0	1	0	0	0	1	0	0	0
Resolved by Non-Jury Trial	0	0	0	0	0	0	0	0	0	0	0	0
Resolved by Guilty Plea	11	13	11	11	17	14	18	15	21	12	16	27
Dismissal	5	2	2	2	3	0	2	4	2	1	0	2
Others	0	0	0	0	0	0	0	0	0	0	0	0
Controlled Substance - Non Drug Court⁽¹⁾	94	61	83	85	64	78	116	68	76	93	75	69
Resolved by Jury Trial	0	1	3	3	3	0	3	4	0	0	0	1
Resolved by Non-Jury Trial	3	0	1	0	0	0	0	0	0	0	0	0
Resolved by Guilty Plea	82	51	63	61	50	69	89	39	58	72	61	54
Dismissal	9	9	16	21	11	9	24	25	18	21	14	13
Others	0	0	0	0	0	0	0	0	0	0	0	1
Drug Court⁽²⁾	21	12	8	30	14	16	13	18	17	15	21	13
Resolved by Non-Jury Trial	11	4	3	2	4	3	0	1	0	3	2	3
Resolved by Guilty Plea	5	2	5	4	3	3	2	3	3	0	2	0
Dismissal	5	6	0	24	7	10	11	14	14	12	17	10
Others	0	0	0	0	0	0	0	0	0	0	0	0
Other	97	61	94	90	71	84	91	68	79	86	79	108
Resolved by Jury Trial	4	2	5	2	4	10	3	4	4	5	2	3
Resolved by Non-Jury Trial	2	1	1	0	0	1	0	0	1	0	0	0
Resolved by Guilty Plea	67	45	63	68	51	50	66	39	63	63	61	79
Dismissal	23	12	20	20	16	22	21	25	11	18	14	23
Others	1	0	5	0	0	1	1	0	0	0	2	3
Criminal RALJ	17	7	8	19	12	14	18	16	21	12	11	16
RALJ Decision	14	5	6	10	11	11	13	9	16	7	4	11
Dismissal	3	2	2	9	1	3	5	6	5	4	6	4
Others	0	0	0	0	0	0	0	1	0	1	1	1

(*) The highest crime category in a case's history is used to classify cases.

Reflects all documents received by 10/15/2015.

(1) "Controlled Substance - Non Drug Court" are drug related cases that have never been accepted into drug court.

(2) "Controlled Substance - Drug Court" are drug related cases that have been formally accepted into drug court (identified by "Order of Participation").

(3) DV Subset includes cases with a DV flag in at least one of the charges within the specific crime category at the time of the reporting.

Table 4. Age (days) of Resolved Cases
King County Superior Court

Crime Category ^(*)	Oct 2014	Nov 2014	Dec 2014	Jan 2015	Feb 2015	Mar 2015	Apr 2015	May 2015	Jun 2015	Jul 2015	Aug 2015	Sep 2015
Homicide ^(**)												
50% Cases Resolved by Day	1254	330	567	314	201	905	379	245	588	348	517	806
90% Cases Resolved by Day	1731	390	897	433	218	1618	974	412	1456	1306	675	1147
Average Time (days)	1254	313	566	299	201	919	435	228	699	556	489	806
Sex Crime												
50% Cases Resolved by Day	145	149	205	154	190	185	168	226	118	202	191	191
90% Cases Resolved by Day	525	672	417	390	356	556	528	497	371	365	549	320
Average Time (days)	213	230	243	186	173	241	228	255	169	193	250	198
Robbery												
50% Cases Resolved by Day	140	114	86	99	73	82	150	82	97	116	91	76
90% Cases Resolved by Day	260	292	309	341	302	367	282	301	218	274	195	281
Average Time (days)	187	136	185	133	120	124	199	114	110	145	108	128
Aggravated Assault												
50% Cases Resolved by Day	116	106	105	115	119	102	94	106	122	93	89	109
90% Cases Resolved by Day	263	321	259	316	321	291	294	351	343	267	268	300
Average Time (days)	143	172	131	176	147	153	138	184	163	130	139	144
Burglary/Theft/Larceny												
50% Cases Resolved by Day	101	111	108	110	117	119	89	106	92	102	110	111
90% Cases Resolved by Day	279	291	267	321	274	318	269	226	229	207	263	322
Average Time (days)	141	141	133	151	158	153	129	122	122	118	132	148
Motor Vehicle Theft												
50% Cases Resolved by Day	125	112	143	118	70	71	77	64	88	62	100	90
90% Cases Resolved by Day	235	170	340	338	232	318	259	180	127	150	152	174
Average Time (days)	129	102	172	132	115	141	118	75	98	72	103	98
Controlled Substance												
50% Cases Resolved by Day	128	126	133	125	126	145	145	95	100	113	111	134
90% Cases Resolved by Day	309	280	379	273	265	318	342	238	255	254	296	364
Average Time (days)	167	137	181	144	169	179	167	156	146	128	151	179
Drug Court ⁽²⁾												
50% Cases Resolved by Day	475	684	425	577	497	595	621	573	474	510	567	604
90% Cases Resolved by Day	841	1503	764	707	835	1021	828	947	700	1127	699	947
Average Time (days)	533	844	484	567	512	611	666	622	146	583	575	703
Other												
50% Cases Resolved by Day	103	109	103	131	102	104	92	83	102	107	97	98
90% Cases Resolved by Day	293	254	218	336	299	344	279	231	363	245	288	339
Average Time (days)	144	122	116	155	139	156	241	103	304	129	132	147
Criminal RALJ												
50% Cases Resolved by Day	239	352	231	371	294	237	253	226	288	239	253	304
90% Cases Resolved by Day	350	534	437	784	631	574	687	355	412	350	438	358
Average Time (days)	261	373	248	469	376	340	318	235	304	263	250	288

(*) The highest crime category in a case's history is used to classify cases. For example, a case charged with homicide at any time during the case's history is reported as a homicide regardless of whether the charge is reduced at resolution.

(**) Due to small number of resolutions in this category, the age statistics for homicides are expected to vary considerably.

Reflects all documents received by **10/15/2015**.

(1) "Controlled Substance - Non Drug Court" are drug related cases that have never been accepted into drug court.

(2) "Controlled Substance - Drug Court" are drug related cases that have been formally accepted into drug court (identified by "Order of Participation").

(3) DV Subset includes cases with a DV flag in at least one of the charges within the specific crime category at the time of the reporting.

Table 5. Pending Criminal Cases
King County Superior Court

Crime Category (*)	Sep 2014	Oct 2014	Nov 2014	Dec 2014	Jan 2015	Feb 2015	Mar 2015	Apr 2015	May 2015	Jun 2015	Jul 2015	Aug 2015	Sep 2015
Total													
Previous Pending	3060	3061	3019	2982	3021	2900	2954	3048	2935	3037	3020	2937	2910
New Filing (+)	487	590	468	558	525	544	647	590	582	590	458	518	525
Resolved (-)	523	605	437	526	547	445	560	680	529	578	567	526	583
End Pending	3061	3019	2982	3021	2900	2954	3048	2935	3037	3020	2937	2910	2881
Homicide													
Previous Pending	73	67	65	66	65	66	65	62	59	57	58	58	57
New Filing (+)	2	1	6	2	4	0	3	5	0	6	3	6	2
Resolved (-)	5	2	3	6	3	2	5	7	5	6	4	5	2
End Pending	67	65	66	65	66	65	62	59	57	58	58	57	59
Sex Crime													
Previous Pending	263	259	252	264	270	270	270	278	273	268	274	264	272
New Filing (+)	49	38	36	43	37	46	42	38	52	37	32	49	40
Resolved (-)	36	42	20	34	28	29	36	42	42	33	46	36	36
End Pending	259	252	264	270	270	270	278	273	268	274	264	272	280
Robbery													
Previous Pending	91	88	87	81	65	61	59	60	67	70	67	60	60
New Filing (+)	14	16	11	13	20	10	20	18	18	18	10	8	12
Resolved (-)	15	14	14	23	15	14	19	13	18	27	23	19	14
End Pending	88	87	81	65	61	59	60	67	70	67	60	60	53
Aggravated Assault													
Previous Pending	549	569	523	487	504	470	467	463	443	454	468	455	493
New Filing (+)	100	106	87	108	107	105	99	115	117	99	120	130	111
Resolved (-)	103	153	129	112	126	96	118	136	124	106	110	83	128
End Pending	569	523	487	504	470	467	463	443	454	468	455	493	496
Burglary/Theft/Larceny													
Previous Pending	726	705	720	710	719	686	713	779	744	795	762	737	688
New Filing (+)	148	205	127	172	144	159	246	185	165	177	119	125	136
Resolved (-)	171	149	115	145	138	122	176	224	141	189	165	181	168
End Pending	705	720	710	719	686	713	779	744	795	762	737	688	675
Motor Vehicle Theft													
Previous Pending	72	73	70	61	70	70	63	89	85	93	79	77	78
New Filing (+)	13	16	10	33	22	26	34	21	23	21	12	20	16
Resolved (-)	14	16	12	13	13	21	14	20	19	24	13	16	29
End Pending	73	70	61	70	70	63	89	85	93	79	77	78	69
Controlled Substance - Non Drug Court (1)													
Previous Pending	475	466	466	456	427	416	433	447	393	445	431	417	390
Resolved (-)	81	94	61	83	85	64	78	116	68	76	93	75	69
End Pending	466	466	456	427	416	433	447	393	445	431	417	390	385
Drug Court (2)													
Previous Pending	256	268	268	284	293	289	305	300	293	281	300	300	299
New Filing (+)	20	20	31	20	26	21	14	17	2	28	15	20	21
Resolved (-)	14	21	12	8	30	14	16	13	18	17	15	21	13
End Pending	268	268	284	293	289	305	300	293	281	300	300	299	310
Other													
Previous Pending	418	428	431	429	453	435	442	447	441	432	443	424	416
New Filing (+)	75	93	96	86	111	93	99	84	83	100	80	94	102
Resolved (-)	72	97	60	94	90	71	84	91	78	79	86	79	108
End Pending	428	431	429	453	435	442	447	441	432	443	424	416	400
Criminal RALJ													
Previous Pending	139	138	137	144	155	137	137	140	137	142	138	145	157
New Filing (+)	12	16	14	19	3	14	17	14	20	17	20	23	12
Resolved (-)	13	17	7	8	19	12	14	18	16	21	12	11	16
End Pending	138	137	144	155	137	137	140	137	142	138	145	157	154
Total Pending Caseload													
SEA (%)	52%	51%	51%	51%	51%	51%	52%	55%	55%	57%	57%	56%	56%
KNT (%)	48%	49%	49%	49%	49%	49%	48%	45%	45%	43%	43%	44%	44%

(*) Information from filing to the reporting time is used to determine crime category for pending cases. The category for a case in this table is the highest crime category since filing. For example, a case initially charged with homicide is reported as a homicide regardless of whether or not the charge is reduced since filing. On the other hand, if the charge for a case is upgraded later, then the reporting category in later reports will reflect the upgraded (higher) crime category.

Reflects all documents received by 10/15/2015. Drug court cases are identified by docket code "ORPAR" (Order for Participation).

Table 6. Age of Pending Criminal Cases
King County Superior Court

Crime Category (*)	Sep 2014	Oct 2014	Nov 2014	Dec 2014	Jan 2015	Feb 2015	Mar 2015	Apr 2015	May 2015	Jun 2015	Jul 2015	Aug 2015	Sep 2015
Total													
Age (days)													
Median (50 th percentile)	121	114	123	121	108	108	98	94	95	98	106	110	107
95 th percentile	765	760	785	771	550	557	525	526	537	549	565	567	572
# of Cases in Age Interval													
0 - 60 days (0 - 2 months)	885	930	884	868	936	963	1103	1064	1030	1028	923	877	963
61-120 days (3 - 4 months)	640	621	593	640	636	626	647	613	740	717	689	698	604
121-180 days (5 - 6 months)	455	415	391	413	376	419	391	388	396	396	445	439	439
181-270 days (7 - 9 months)	406	386	413	365	365	359	339	322	322	351	326	346	356
> 270 days (> 9 months)	675	667	701	735	587	587	568	548	549	528	554	550	519
Homicide													
Age (days)													
Median (50 th percentile)	215	240	262	262	237	293	296	309	340	333	344	326	317
95 th percentile	1421	1240	1270	1124	1203	1321	1214	1421	1452	1305	1336	1367	1397
# of Cases in Age Interval													
0 - 60 days (0 - 2 months)	6	4	4	11	10	4	2	4	4	6	8	6	8
61-120 days (3 - 4 months)	13	9	5	4	7	11	10	4	2	5	4	6	7
121-180 days (5 - 6 months)	6	7	13	9	3	4	6	9	8	5	2	5	4
181-270 days (7 - 9 months)	11	15	13	10	15	13	10	6	6	10	12	7	6
> 270 days (> 9 months)	31	30	31	31	31	33	34	36	37	32	32	33	34
Sex Crime													
Age (days)													
Median (50 th percentile)	155	138	142	136	125	130	128	130	130	134	129	131	127
95 th percentile	775	796	740	681	601	586	524	520	514	530	536	530	554
# of Cases in Age Interval													
0 - 60 days (0 - 2 months)	58	68	62	68	78	63	69	69	70	71	70	71	77
61-120 days (3 - 4 months)	55	48	49	56	51	59	67	53	54	58	51	59	60
121-180 days (5 - 6 months)	30	32	45	43	41	49	42	48	53	38	38	44	44
181-270 days (7 - 9 months)	43	40	33	34	38	37	43	46	43	49	47	41	40
> 270 days (> 9 months)	73	64	75	69	62	62	57	57	48	58	58	57	59
Robbery													
Age (days)													
Median (50 th percentile)	197	179	155	79	55	61	63	70	69	77	70	71	79
95 th percentile	799	788	818	849	488	583	581	428	459	468	287	318	330
# of Cases in Age Interval													
0 - 60 days (0 - 2 months)	15	28	24	22	32	29	26	32	33	24	25	25	20
61-120 days (3 - 4 months)	13	12	9	15	16	12	17	18	16	25	17	12	13
121-180 days (5 - 6 months)	13	5	9	4	2	10	9	7	10	7	10	13	11
181-270 days (7 - 9 months)	25	15	13	3	1	0	1	4	6	7	4	4	5
> 270 days (> 9 months)	22	27	26	21	10	8	7	6	5	4	4	6	4
Aggravated Assault													
Age (days)													
Median (50 th percentile)	97	87	97	100	94	87	76	78	74	69	79	78	72
95 th percentile	505	535	565	517	373	388	407	407	417	401	352	330	289
# of Cases in Age Interval													
0 - 60 days (0 - 2 months)	205	191	163	167	177	184	193	187	201	211	185	203	224
61-120 days (3 - 4 months)	130	121	117	120	99	104	109	108	111	114	126	139	120
121-180 days (5 - 6 months)	81	73	63	74	76	68	50	53	61	65	68	68	76
181-270 days (7 - 9 months)	82	67	68	57	58	53	55	41	36	41	38	46	48
> 270 days (> 9 months)	71	71	76	86	60	58	56	54	45	37	38	37	28
Burglary/Theft/Larceny													
Age (days)													
Median (50 th percentile)	88	86	92	85	79	79	65	65	73	79	89	97	87
95 th percentile	615	623	658	588	370	327	316	314	321	306	332	350	319
# of Cases in Age Interval													
0 - 60 days (0 - 2 months)	251	272	275	262	280	292	364	349	327	297	250	229	253
121-180 days (5 - 6 months)	153	178	160	177	190	191	199	171	239	238	226	184	156
61-120 days (3 - 4 months)	111	92	88	99	78	94	102	108	106	106	129	136	124
181-270 days (7 - 9 months)	82	67	76	71	68	75	58	66	66	71	75	81	89
> 270 days (> 9 months)	108	111	111	110	70	61	56	50	57	50	57	58	53

(*) The highest crime category since filing is used to classify cases. For example, a case initially charged with homicide is reported as a homicide regardless of whether or not the charge is reduced since filing. On the other hand, if the charge for a case is upgraded later, then the reporting category in later reports will reflect the upgraded (higher) crime category.

Reflects all documents received by 10/15/2015.

- (1) "Controlled Substance - Non Drug Court" are drug related cases that have never been accepted into drug court.
- (2) "Controlled Substance - Drug Court" are drug related cases that have been formally accepted into drug court (identified by "Order of Participation").

Table 6 (cont.). Age of Pending Criminal Cases
King County Superior Court

Crime Category (*)	Sep 2014	Oct 2014	Nov 2014	Dec 2014	Jan 2015	Feb 2015	Mar 2015	Apr 2015	May 2015	Jun 2015	Jul 2015	Aug 2015	Sep 2015
Motor Vehicle Theft													
Age (days)													
Median (50 th percentile)	120	121	117	84	56	54	35	58	70	82	80	95	66
95 th percentile	367	398	428	400	413	441	343	263	294	324	355	386	416
# of Cases in Age Interval													
0 - 60 days (0 - 2 months)	20	21	18	30	36	35	58	47	40	34	29	29	31
61-120 days (3 - 4 months)	17	14	13	13	12	13	16	24	35	23	19	19	13
121-180 days (5 - 6 months)	15	15	7	9	7	3	7	7	11	12	18	15	11
181-270 days (7 - 9 months)	13	9	11	6	6	5	3	3	2	6	7	11	9
> 270 days (> 9 months)	8	11	12	12	9	7	5	4	5	4	4	4	5
Controlled Substance - Non Drug Court⁽¹⁾													
Age (days)													
Median (50 th percentile)	105	95	98	96	97	90	83	77	79	71	82	96	86
95 th percentile	806	837	922	953	416	339	366	345	366	387	409	415	410
# of Cases in Age Interval													
0 - 60 days (0 - 2 months)	163	166	165	127	137	161	175	173	181	191	155	126	152
61-120 days (3 - 4 months)	103	97	108	127	118	102	96	92	120	97	118	127	97
121-180 days (5 - 6 months)	85	78	53	58	65	78	68	54	56	51	54	49	62
181-270 days (7 - 9 months)	40	57	56	49	52	49	49	39	45	51	42	39	36
> 270 days (> 9 months)	75	68	74	66	44	43	42	35	43	41	48	49	38
Drug Court⁽²⁾													
Age (days)													
Median (50 th percentile)	357	360	369	374	369	380	387	399	421	429	434	428	435
95 th percentile	1034	1060	966	997	939	995	996	1023	1038	1076	1068	1084	959
# of Cases in Age Interval													
0 - 60 days (0 - 2 months)	1	3	2	0	3	2	3	3	0	3	4	2	1
61-120 days (3 - 4 months)	5	4	8	6	8	9	14	10	9	17	11	15	14
121-180 days (5 - 6 months)	28	16	18	17	17	23	17	12	14	21	22	23	24
181-270 days (7 - 9 months)	49	59	67	56	46	41	34	41	33	37	32	39	46
> 270 days (> 9 months)	185	186	189	214	215	230	232	227	225	222	231	220	225
Other													
Age (days)													
Median (50 th percentile)	91	95	109	111	89	87	79	81	95	93	94	87	86
95 th percentile	825	793	790	756	385	394	377	386	417	410	428	421	364
# of Cases in Age Interval													
0 - 60 days (0 - 2 months)	135	149	141	148	165	176	182	171	140	156	162	146	163
61-120 days (3 - 4 months)	127	106	93	94	104	92	99	116	127	112	82	101	92
121-180 days (5 - 6 months)	66	74	72	70	55	63	61	58	61	74	79	61	50
181-270 days (7 - 9 months)	32	36	53	51	52	54	55	43	51	49	50	54	52
> 270 days (> 9 months)	68	66	70	90	59	57	50	53	53	52	51	54	43
Criminal RALJ													
Age (days)													
Median (50 th percentile)	154	144	144	146	164	166	158	170	165	133	135	124	136
95 th percentile	499	530	560	591	489	495	451	457	476	506	520	551	581
# of Cases in Age Interval													
0 - 60 days (0 - 2 months)	31	28	30	33	18	17	31	29	34	35	35	40	34
61-120 days (3 - 4 months)	24	32	31	28	31	33	20	17	27	28	35	36	32
121-180 days (5 - 6 months)	20	23	23	30	32	27	29	32	16	17	25	25	33
181-270 days (7 - 9 months)	29	21	23	28	29	32	31	33	34	30	19	24	25
> 270 days (> 9 months)	34	33	37	36	27	28	29	26	31	28	31	32	30

(*) The highest crime category since filing is used to classify cases. For example, a case initially charged with homicide is reported as a homicide regardless of whether or not the charge is reduced since filing. On the other hand, if the charge for a case is upgraded later, then the reporting category in later reports will reflect the upgraded (higher) crime category.

Reflects all documents received by 10/15/2015.

- (1) "Controlled Substance - Non Drug Court" are drug related cases that have never been accepted into drug court.
- (2) "Controlled Substance - Drug Court" are drug related cases that have been formally accepted into drug court (identified by "Order of Participation").

Table 7. Comparison between SEA/KNT: Filings, Resolutions, and Pending Caseload
King County Superior Court

	Oct 2014	Nov 2014	Dec 2014	Jan 2015	Feb 2015	Mar 2015	Apr 2015	May 2015	Jun 2015	Jul 2015	Aug 2015	Sep 2015 ⁽¹⁾
Total Filings												
SEA - # of Cases Filed	296	255	303	283	291	339	341	325	332	264	266	292
KNT - # of Cases Filed	294	213	255	242	253	308	249	257	258	194	252	233
SEA %	50%	54%	54%	54%	53%	52%	58%	56%	56%	58%	51%	56%
KNT %	50%	46%	46%	46%	47%	48%	42%	44%	44%	42%	49%	44%
Total Resolutions												
SEA - # of Cases Resolved	323	242	296	273	228	259	296	256	265	315	262	310
KNT - # of Cases Resolved	261	183	222	244	203	285	371	255	296	237	243	260
SEA - Drug Court Cases Resolved	19	6	5	22	12	8	8	11	15	11	16	12
KNT - Drug Court Cases Resolved	2	6	3	8	2	8	5	7	2	4	5	1
SEA %	53%	55%	56%	50%	51%	46%	44%	48%	46%	56%	50%	53%
KNT %	43%	42%	42%	45%	46%	51%	55%	48%	51%	42%	46%	45%
SEA - Drug Court %	3%	1%	1%	4%	3%	1%	1%	2%	3%	2%	3%	2%
KNT - Drug Court %	0%	1%	1%	1%	0%	1%	1%	1%	0%	1%	1%	0%
Total Pending												
SEA - # of Cases Pending	1384	1336	1360	1294	1314	1408	1424	1490	1512	1471	1435	1406
KNT - # of Cases Pending	1367	1362	1368	1317	1335	1340	1218	1266	1208	1166	1176	1165
SEA - Drug Court Cases Pending	166	183	188	184	195	193	192	192	198	199	205	208
KNT - Drug Court Cases Pending	102	101	105	105	110	107	101	89	102	101	94	102
SEA %	46%	45%	45%	45%	44%	46%	49%	49%	50%	50%	49%	49%
KNT %	45%	46%	45%	45%	45%	44%	42%	42%	40%	40%	40%	40%
SEA - Drug Court %	5%	6%	6%	6%	7%	6%	7%	6%	7%	7%	7%	7%
KNT - Drug Court %	3%	3%	3%	4%	4%	4%	3%	3%	3%	3%	3%	4%

(1) Reflects all documents received by **10/15/2015**.

(2) The number of judges does not include RJC chief judge and the criminal chief judge at SEA.

Table 8. Drug Court Statistics

King County Superior Court

Categories	Aug 2014	Sep 2014	Oct 2014	Nov 2014	Dec 2014	Jan 2015	Feb 2015	Mar 2015	Apr 2015	May 2015	Jun 2015	Jul 2015	Aug 2015	Sep 2015
Referrals - Total	52	36	46	31	31	38	24	33	52	54	56	27	43	48
Directly from PA	22	22	29	10	10	20	19	22	45	37	37	16	24	35
From Mainstream	30	14	17	21	21	18	5	11	7	17	19	11	19	14
Arraignments in Drug Court ⁽¹⁾	22	17	23	12	12	15	19	23	32	35	26	22	16	29
GP in Drug Court ⁽²⁾	2	1	1	2	2	4	1	1	2	2	3	1	2	0
Return to mainstream ⁽³⁾	17	15	21	9	9	17	14	8	12	9	17	7	6	17
Opt-in ⁽⁴⁾	14	20	20	31	31	26	21	14	17	2	28	15	20	21
Graduations ⁽⁵⁾	10	13	5	6	6	24	7	10	11	14	12	12	17	10
Terminations ⁽⁶⁾	8	1	16	6	6	6	7	6	2	4	3	3	2	3

- (1) Arraignments held in drug court regardless opt-in status of the cases.
- (2) Guilty pleas entered in drug court before opt-in.
- (3) Referred to drug court but decision by court order to go to mainstream.
- (4) Opt-in reflects the court order of participation.
- (5) Graduations are dismissals of opted-in cases after the completion of program.
- (6) Terminations are cases that fail in drug court.