

King County Superior Court
Criminal Department Statistical Report

October 2016

Department of Judicial Administration
Prepared by: Shiquan Liao, Ph.D., Statistician

Release date: November 20, 2016

Report #: CRM-2016-10

Terminology

Age of Pending Case

Time (days) from filing to resolution, less suspense time if applicable.

Age of Resolved Case

Time (days) from filing to resolution, less suspense time if applicable.

End Pending

Number of pending cases at the end of reporting period.

Net Change in Pending

The change in number of pending cases (end pending minus previous pending).

Pending Case

A case is defined as pending if it is unresolved and not on suspense status.

Previous Pending

Number of pending cases at the beginning of reporting period.

Reactivated Case

A case returns to active from suspense status during the reporting period.

Resolution

A case is resolved if all issues in the complaint are fully adjudicated. However, a drug court case is reported as resolved only when dispositive document is also filed (completed).

Resolution Category

Five resolution categories are used to report resolution of criminal cases: jury trial (CVJV, AQJV), non-jury trial (CVCT, AQCT), guilty plea (GP, GPAT, GPJT), dismissal (DSM), and other (all other resolution codes). For criminal RALJ cases, the resolution categories are: RALJ decision (CDTA, CDTM, CDTR), dismissal (DSRM), and others (any other resolution codes).

Suspended Case

A case is placed in suspense status (removing from active) during the reporting period.

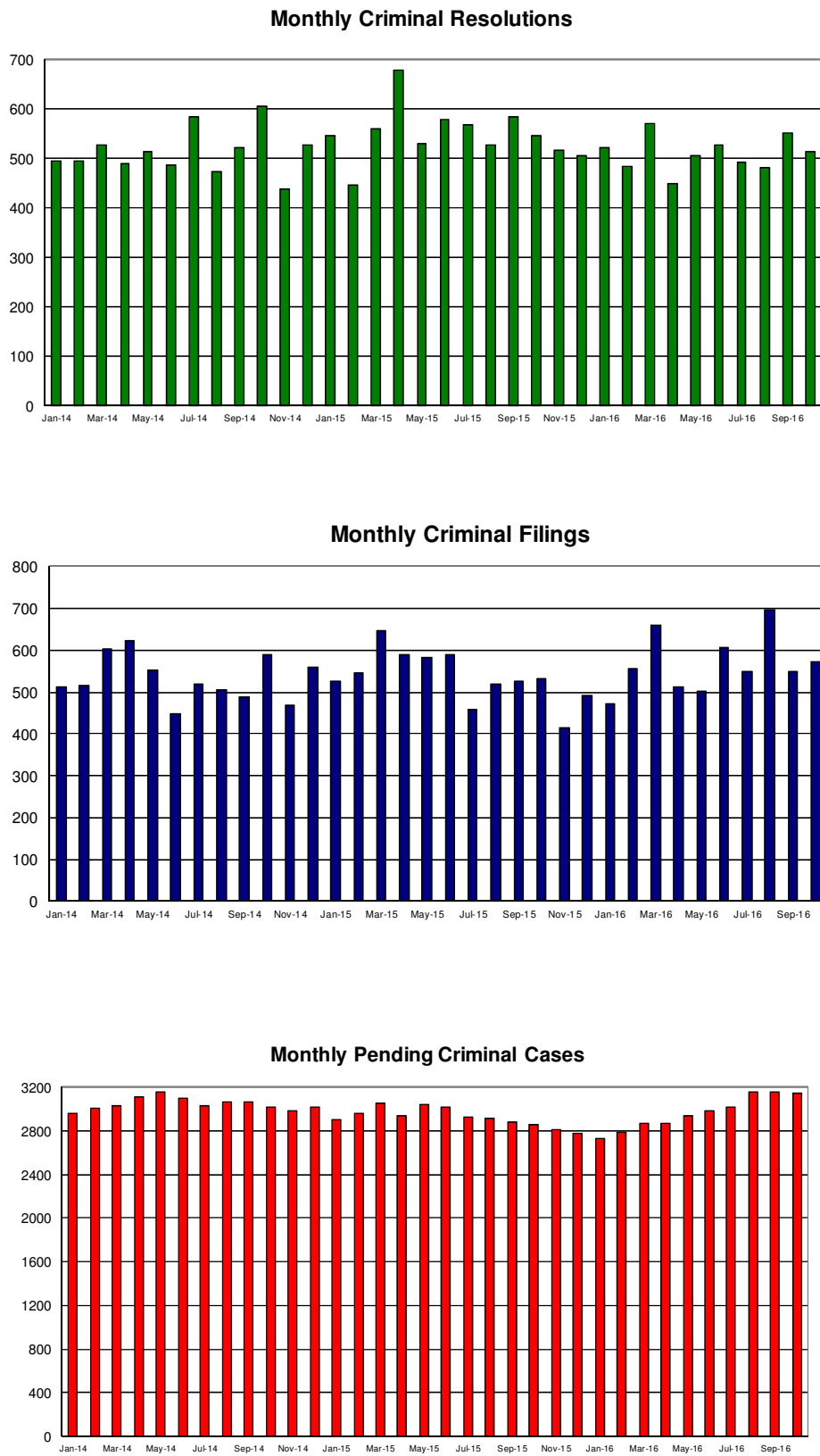
Suspense Status

A case is said to be on suspense status if it is on warrant or appeal.

Suspense Time

Time (days) a case is on suspense status.

Figure 1. Number of Criminal Filings, Resolutions and Pending Caseload by Month



Note: Starting January 2010, RALJ cases are included.

Figure 2. Crime Category as a Percentage of Total Filings by Year

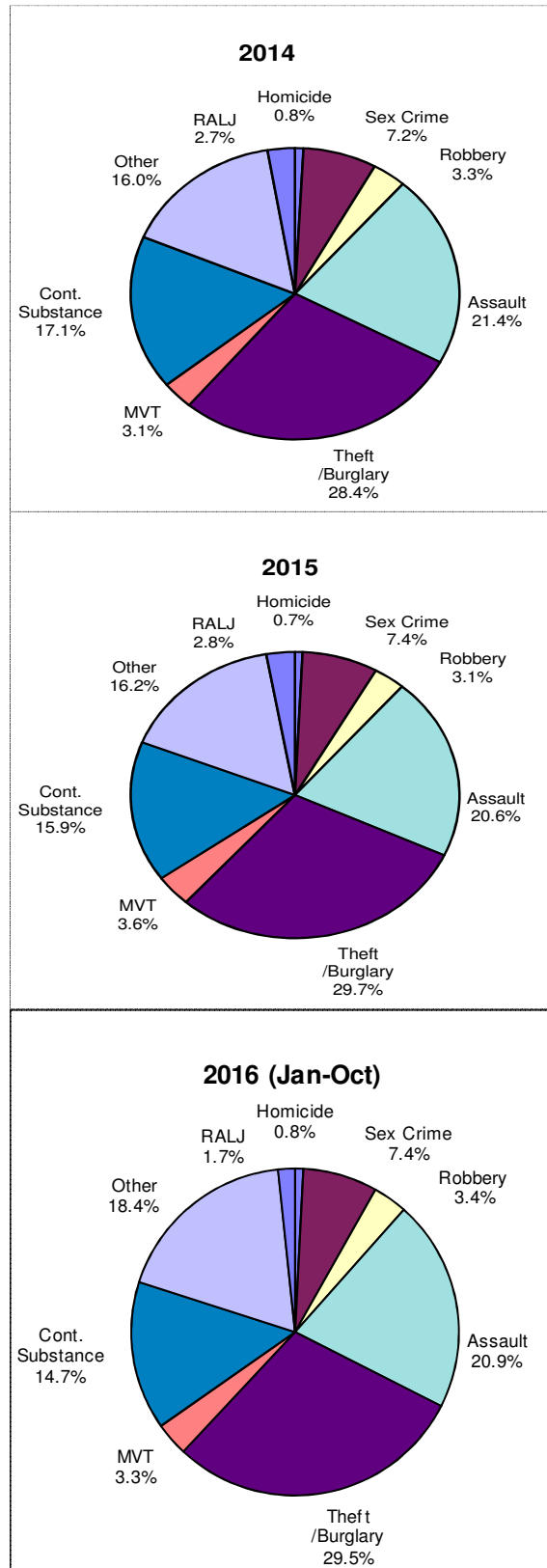


Table 1. Monthly Criminal New Filings by Crime Category (*)
King County Superior Court

	Jan	Feb	Mar	Apr	May	Jun	Jul	Aug	Sep	Oct	Nov	Dec	ADJ ⁽¹⁾	Annual
Total														
2013	514	492	524	536	545	462	502	540	462	597	482	568	(+2)	6226
2014	512	514	604	623	551	449	518	506	487	590	468	558	(+6)	6383
2015	525	544	647	590	582	590	458	518	525	531	413	491	(+4)	6418
2016 ⁽²⁾	473	556	658	512	501	605	549	695	550	573				
Homicide														
2013	3	2	5	3	2	2	4	3	6	6	0	5	(+1)	42
2014	3	2	9	4	4	4	11	5	2	1	6	2	(-2)	51
2015	4	0	3	5	0	6	3	6	2	4	4	6	(+4)	47
2016 ⁽²⁾	2	3	7	6	4	4	7	4	4	5				
Sex Crime														
2013	45	39	79	54	49	27	54	43	19	38	59	51	(+6)	563
2014	37	38	52	42	24	36	37	30	49	38	36	43	(-6)	456
2015	37	46	42	38	52	37	32	49	40	38	23	42	(+2)	478
2016 ⁽²⁾	39	46	53	40	60	36	42	40	24	37				
Robbery														
2013	44	36	33	33	31	40	27	41	48	49	29	34	(+7)	452
2014	50	28	26	13	11	9	12	9	14	16	11	13	(-35)	177
2015	20	10	20	18	18	18	10	8	12	20	11	18	(+17)	200
2016 ⁽²⁾	14	18	16	19	24	22	22	22	22	13				
Aggravated Assault														
2013	103	116	102	121	119	76	122	98	103	104	110	104	(+24)	1302
2014	128	109	137	109	113	116	130	121	100	106	87	108	(+29)	1393
2015	107	105	99	115	117	99	120	130	111	107	83	100	(+30)	1323
2016 ⁽²⁾	99	124	116	102	115	123	120	139	109	140				
Burglary/Theft /Larceny														
2013	139	127	138	162	147	144	148	147	130	167	110	157	(+10)	1726
2014	122	140	162	182	167	109	132	145	148	205	127	172	(+17)	1928
2015	144	159	243	185	165	177	119	125	136	139	137	140	(+34)	1903
2016 ⁽²⁾	137	162	241	148	139	174	160	184	171	156				
Motor Vehicle Theft														
2013	17	14	12	15	11	9	16	10	17	19	9	16	(-3)	162
2014	13	15	24	23	19	10	16	6	13	16	10	33	(+3)	201
2015	22	26	34	21	23	21	12	20	16	19	8	16	(-9)	229
2016 ⁽²⁾	15	18	22	20	17	19	18	26	15	18				
Controlled Substance														
2013	88	69	82	62	95	94	66	86	58	130	82	112	(0)	1024
2014	74	87	116	142	104	80	68	84	74	99	81	82	(+7)	1098
2015	77	91	90	110	104	115	62	63	94	79	67	66	(+1)	1019
2016 ⁽²⁾	67	81	92	71	40	91	82	133	95	80				
Other														
2013	61	77	59	72	71	56	55	88	71	70	70	68	(-44)	774
2014	73	77	65	98	100	71	99	85	75	93	96	86	(-8)	1010
2015	111	93	99	84	83	100	80	94	102	113	65	90	(-75)	1039
2016 ⁽²⁾	88	93	94	98	90	123	92	142	107	108				
Criminal RALJ														
2013	14	12	14	14	20	14	10	24	10	14	13	21	(+1)	181
2014	12	18	13	10	9	14	13	21	12	16	14	19	(+1)	172
2015	3	14	17	14	20	17	20	23	12	12	15	13	(0)	180
2016 ⁽²⁾	12	11	17	8	3	13	6	5	3	16				
KNT Filing as % of Total														
2013	43%	46%	44%	46%	46%	39%	41%	35%	43%	41%	38%	37%		42%
2014	46%	47%	48%	47%	46%	44%	43%	46%	43%	50%	46%	46%		45%
2015	46%	47%	48%	42%	44%	44%	42%	49%	44%	45%	44%	42%		45%
2016 ⁽²⁾	40%	41%	45%	40%	47%	43%	39%	46%	46%	45%				

(*) The highest crime category in a case's history is used to classify cases. For example, a case charged with homicide at any time in the case's history is reported as a homicide regardless of whether the charge is reduced at resolution.

(1) "ADJ" = year-end adjustment.

(2) Reflects all documents received by 11/15/2016.

Table 2. Monthly Criminal Case Resolutions by Crime Category
King County Superior Court

	Jan	Feb	Mar	Apr	May	Jun	Jul	Aug	Sep	Oct	Nov	Dec	ADJ ⁽¹⁾	Annual
Total														
2013	552	484	546	478	533	422	526	551	496	538	418	462	(+13)	6019
2014	495	495	528	490	513	486	584	474	523	605	437	526	(+11)	6167
2015	547	445	560	680	529	578	567	526	583	546	516	505	(+7)	6589
2016 ⁽²⁾	522	484	571	449	507	527	491	482	553	513				
Homicide														
2013	3	3	3	5	10	7	3	4	2	8	4	8	(+1)	61
2014	2	5	6	6	3	1	3	2	5	2	3	6	(+1)	45
2015	3	2	5	7	5	6	4	5	2	3	6	4	(0)	52
2016 ⁽²⁾	1	3	7	1	5	3	7	5	4	7				
Sex Crime														
2013	34	39	39	47	43	36	33	54	45	47	29	27	(0)	473
2014	40	47	40	36	50	34	39	34	36	42	20	34	(-1)	451
2015	28	29	36	42	42	33	46	36	36	38	39	40	(+1)	446
2016 ⁽²⁾	51	31	51	34	40	33	38	44	33	30				
Robbery														
2013	42	30	40	32	36	38	38	35	45	29	39	28	(+1)	433
2014	43	41	41	24	24	17	26	25	15	14	14	23	(-44)	263
2015	15	14	19	13	18	27	23	19	14	11	25	20	(+1)	219
2016 ⁽²⁾	12	20	11	8	22	21	29	17	22	25				
Aggravated Assault														
2013	102	109	132	98	127	86	120	108	97	138	89	83	(0)	1289
2014	101	103	113	112	104	107	125	119	103	153	129	112	(+17)	1398
2015	126	96	118	136	124	106	110	83	128	136	113	104	(+3)	1383
2016 ⁽²⁾	102	79	135	118	122	105	113	110	121	99				
Burglary/Theft /Larceny														
2013	148	135	137	113	137	106	148	149	136	124	109	127	(+11)	1580
2014	123	133	150	125	141	122	171	126	171	149	115	145	(+7)	1678
2015	138	122	176	224	141	189	165	181	168	155	144	169	(-3)	1969
2016 ⁽²⁾	122	144	158	135	127	160	145	146	170	148				
Motor Vehicle Theft														
2013	15	7	13	12	14	8	13	9	13	14	8	6	(0)	132
2014	14	16	8	16	15	28	11	11	13	16	16	13	(0)	177
2015	13	21	14	20	19	24	13	16	29	17	22	14	(0)	222
2016 ⁽²⁾	12	23	9	17	10	21	9	19	20	15				
Controlled Substance - Non Drug Court														
2013	104	61	70	64	75	46	70	74	71	62	49	81	(-2)	825
2014	69	62	74	72	65	73	86	70	81	94	61	83	(+1)	891
2015	85	64	78	116	68	76	93	75	69	59	73	64	(0)	920
2016 ⁽²⁾	85	63	80	54	68	71	53	54	62	68				
Drug Court														
2013	21	21	30	27	18	20	24	29	20	27	12	8	(0)	261
2014	20	25	14	15	17	22	20	18	14	21	12	8	(+4)	210
2015	30	14	16	13	18	17	15	21	13	21	15	3	(+4)	200
2016 ⁽²⁾	39	17	18	14	27	7	19	15	31	18				
Other														
2013	70	66	70	65	62	56	61	71	55	77	59	72	(-5)	786
2014	66	54	67	73	75	64	87	57	72	97	60	94	(+27)	893
2015	90	71	84	91	78	79	86	79	108	91	74	72	(+2)	1005
2016 ⁽²⁾	78	94	84	55	75	91	63	61	76	84				
Criminal RALJ														
2013	13	13	12	15	11	19	16	18	12	12	20	22	(-4)	179
2014	17	9	15	11	19	18	16	12	13	17	7	8	(-1)	161
2015	19	12	14	18	16	21	12	11	16	15	5	15	(-1)	173
2016 ⁽²⁾	20	10	18	13	11	15	15	11	14	19				
KNT as % of Total														
2013	44%	40%	46%	44%	45%	38%	41%	49%	42%	38%	41%	41%		42%
2014	38%	45%	40%	40%	42%	49%	44%	46%	49%	44%	43%	43%		42%
2015	46%	46%	52%	55%	50%	52%	43%	47%	45%	46%	48%	46%		47%
2016 ⁽²⁾	39%	41%	48%	51%	46%	42%	40%	43%	45%	46%				

The highest crime category in a case's history is used to classify cases. For example, a case charged with homicide at any time in the case's history is reported as a homicide regardless of whether the charge is reduced at resolution.

- (1) "ADJ" = year-end adjustment.
- (2) Reflects all documents received by 11/15/2016.
- (3) "Controlled Substance - Non Drug Court" are drug related cases that have never been accepted into drug court.
- (4) "Controlled Substance - Drug Court" are drug related cases that have been formally accepted into drug court (identified by "Order of Participation").

Table 3. Number of Cases Resolved and Resolution Category
King County Superior Court

Crime Category (*)	Nov 2015	Dec 2015	Jan 2016	Feb 2016	Mar 2016	Apr 2016	May 2016	Jun 2016	Jul 2016	Aug 2016	Sep 2016	Oct 2016
Homicide	6	4	1	3	7	1	5	3	7	5	4	7
Resolved by Jury Trial	3	0	0	1	2	0	1	2	1	1	1	2
Resolved by Non-Jury Trial	0	0	0	0	0	0	0	0	1	1	0	0
Resolved by Guilty Plea	3	4	1	2	5	1	4	1	5	3	3	5
Dismissal	0	0	0	0	0	0	0	0	0	0	0	0
Others	0	0	0	0	0	0	0	0	0	0	0	0
Sex Crime	39	40	51	31	51	34	40	33	38	44	33	30
Resolved by Jury Trial	5	2	4	3	3	1	1	5	3	0	2	2
Resolved by Non-Jury Trial	0	0	0	0	0	1	1	0	0	0	0	0
Resolved by Guilty Plea	32	33	37	24	45	28	36	25	32	38	30	23
Dismissal	2	5	10	4	3	4	2	3	3	6	1	5
Others	0	0	0	0	0	0	0	0	0	0	0	0
Robbery	25	20	12	20	11	8	22	21	29	17	22	25
Resolved by Jury Trial	0	0	0	1	0	0	1	0	0	0	0	1
Resolved by Non-Jury Trial	0	0	0	0	0	0	0	0	0	0	0	0
Resolved by Guilty Plea	24	18	11	17	10	6	17	19	27	14	20	19
Dismissal	1	2	1	2	1	2	4	1	2	2	2	5
Others	0	0	0	0	0	0	0	1	0	1	0	0
Aggravated Assault	113	104	102	79	135	118	122	105	113	110	121	99
Resolved by Jury Trial	2	8	2	5	12	3	4	3	6	6	5	4
Resolved by Non-Jury Trial	0	0	2	0	2	1	0	2	3	2	0	0
Resolved by Guilty Plea	92	85	79	71	110	97	105	80	6	84	107	78
Dismissal	19	11	18	3	11	17	12	19	18	18	9	17
Others	0	0	1	0	0	0	1	1	0	0	0	0
Burglary/Theft/Larceny	144	169	122	144	158	135	127	160	145	146	170	148
Resolved by Jury Trial	6	4	3	4	4	2	6	1	3	1	1	4
Resolved by Non-Jury Trial	0	0	0	0	0	0	0	1	0	0	0	0
Resolved by Guilty Plea	120	155	111	134	141	119	113	146	124	130	154	129
Dismissal	18	10	8	6	13	14	8	12	18	12	15	15
Others	0	0	0	0	0	0	0	0	0	3	0	0
Motor Vehicle Theft	22	14	12	23	9	17	10	21	9	19	20	15
Resolved by Jury Trial	0	0	0	0	1	0	0	0	0	0	0	0
Resolved by Non-Jury Trial	0	0	0	0	0	0	0	0	0	0	0	0
Resolved by Guilty Plea	20	13	8	21	6	16	10	20	7	14	18	10
Dismissal	2	1	4	2	2	1	0	1	2	5	2	5
Others	0	0	0	0	0	0	0	0	0	0	0	0
Controlled Substance - Non Drug Court⁽¹⁾	73	64	85	63	80	54	68	71	53	54	62	68
Resolved by Jury Trial	0	1	1	2	3	0	0	2	0	0	0	0
Resolved by Non-Jury Trial	0	0	1	0	0	0	3	1	0	0	0	0
Resolved by Guilty Plea	59	57	75	52	68	48	52	56	44	47	50	53
Dismissal	14	6	8	9	9	6	10	12	9	7	12	15
Others	0	0	0	0	0	0	3	0	0	0	0	0
Drug Court⁽²⁾	15	3	39	17	18	14	27	7	19	15	31	18
Resolved by Non-Jury Trial	1	2	3	2	4	1	2	0	1	3	1	0
Resolved by Guilty Plea	2	1	9	1	5	2	3	2	4	4	8	0
Dismissal	12	0	27	14	9	11	11	5	14	8	22	12
Others	0	0	0	0	0	0	0	0	0	0	0	6
Other	74	72	78	94	84	55	75	91	63	61	76	84
Resolved by Jury Trial	2	2	2	7	6	0	1	0	2	2	3	8
Resolved by Non-Jury Trial	0	1	2	0	0	0	2	0	2	0	0	2
Resolved by Guilty Plea	52	52	63	67	60	41	57	67	42	42	55	54
Dismissal	19	14	9	20	18	14	15	21	13	15	17	20
Others	1	3	2	0	0	0	0	3	4	2	1	0
Criminal RALJ	5	15	20	10	18	13	11	15	15	11	14	19
RALJ Decision	3	7	16	4	8	12	8	11	13	6	14	13
Dismissal	2	8	4	5	8	1	2	2	1	3	0	3
Others	0	0	0	1	2	0	1	2	1	2	0	3

(*) The highest crime category in a case's history is used to classify cases.

Reflects all documents received by **11/15/2016**.

(1) "Controlled Substance - Non Drug Court" are drug related cases that have never been accepted into drug court.

(2) "Controlled Substance - Drug Court" are drug related cases that have been formally accepted into drug court (identified by "Order of Participation").

(3) DV Subset includes cases with a DV flag in at least one of the charges within the specific crime category at the time of the reporting.

Table 4. Age (days) of Resolved Cases
King County Superior Court

Crime Category (*)	Nov 2015	Dec 2015	Jan 2016	Feb 2016	Mar 2016	Apr 2016	May 2016	Jun 2016	Jul 2016	Aug 2016	Sep 2016	Oct 2016
Homicide (**)												
50% Cases Resolved by Day	460	193	545	610	718	316	401	237	729	223	373	368
90% Cases Resolved by Day	1332	727	545	1104	2098	316	1636	500	1296	720	4959	965
Average Time (days)	643	310	545	625	826	316	541	319	547	286	1468	486
Sex Crime												
50% Cases Resolved by Day	173	156	195	208	198	218	207	183	153	172	174	210
90% Cases Resolved by Day	386	317	498	490	455	498	327	412	391	393	329	390
Average Time (days)	184	198	239	246	243	251	193	205	180	200	190	198
Robbery												
50% Cases Resolved by Day	91	102	125	91	88	60	87	132	89	102	96	54
90% Cases Resolved by Day	365	245	209	302	245	187	219	242	207	165	178	306
Average Time (days)	131	141	125	160	111	81	100	143	107	97	98	131
Aggravated Assault												
50% Cases Resolved by Day	89	109	107	135	109	113	90	115	96	103	98	83
90% Cases Resolved by Day	273	224	277	251	349	420	259	298	231	256	293	241
Average Time (days)	121	132	139	139	157	153	129	138	117	142	128	117
Burglary/Theft/Larceny												
50% Cases Resolved by Day	113	107	102	117	98	86	99	92	86	111	105	113
90% Cases Resolved by Day	251	284	246	304	300	297	257	239	188	239	259	245
Average Time (days)	135	148	119	150	138	137	127	123	102	136	133	144
Motor Vehicle Theft												
50% Cases Resolved by Day	49	126	83	96	61	80	63	90	79	78	89	69
90% Cases Resolved by Day	156	288	314	179	117	291	209	268	125	150	324	228
Average Time (days)	75	166	128	109	64	133	91	122	82	76	125	96
Controlled Substance												
50% Cases Resolved by Day	146	123	146	118	113	130	124	114	103	122	116	77
90% Cases Resolved by Day	279	378	258	238	209	301	343	269	180	294	276	252
Average Time (days)	152	162	146	126	116	158	162	139	116	140	146	127
Drug Court (2)												
50% Cases Resolved by Day	611	365	544	651	617	545	566	792	573	525	621	672
90% Cases Resolved by Day	910	600	828	849	884	938	866	959	818	994	1023	1056
Average Time (days)	650	442	573	621	580	600	595	684	611	590	654	736
Other												
50% Cases Resolved by Day	98	85	98	124	93	104	98	112	78	99	111	124
90% Cases Resolved by Day	252	259	243	289	242	224	332	336	267	290	253	275
Average Time (days)	215	124	127	142	130	131	135	139	111	158	131	135
Criminal RALJ												
50% Cases Resolved by Day	287	306	230	268	263	315	303	259	333	245	259	265
90% Cases Resolved by Day	445	446	289	493	822	591	422	402	457	327	488	425
Average Time (days)	296	297	239	276	387	333	289	258	330	260	294	292

(*) The highest crime category in a case's history is used to classify cases. For example, a case charged with homicide at any time during the case's history is reported as a homicide regardless of whether the charge is reduced at resolution.

(**) Due to small number of resolutions in this category, the age statistics for homicides are expected to vary considerably.

Reflects all documents received by 11/15/2016.

(1) "Controlled Substance - Non Drug Court" are drug related cases that have never been accepted into drug court.

(2) "Controlled Substance - Drug Court" are drug related cases that have been formally accepted into drug court (identified by "Order of Participation").

(3) DV Subset includes cases with a DV flag in at least one of the charges within the specific crime category at the time of the reporting.

Table 5. Pending Criminal Cases
King County Superior Court

Crime Category (*)	Oct 2015	Nov 2015	Dec 2015	Jan 2016	Feb 2016	Mar 2016	Apr 2016	May 2016	Jun 2016	Jul 2016	Aug 2016	Sep 2016	Oct 2016
Total													
Previous Pending	2881	2861	2804	2776	2734	2789	2871	2870	2939	2980	3017	3152	3157
New Filing (+)	531	413	491	473	556	658	512	501	605	549	695	550	573
Resolved (-)	546	516	505	522	484	571	449	507	527	491	482	553	513
End Pending	2861	2804	2776	2734	2789	2871	2870	2939	2980	3017	3152	3157	3145
Homicide													
Previous Pending	59	62	61	64	68	65	64	70	70	72	69	69	71
New Filing (+)	4	4	6	2	3	7	6	4	4	7	4	4	5
Resolved (-)	3	6	4	1	3	7	1	5	3	7	5	4	7
End Pending	62	61	64	68	65	64	70	70	72	69	70	71	70
Sex Crime													
Previous Pending	280	276	263	273	249	260	269	271	285	293	295	293	292
New Filing (+)	38	23	42	39	46	53	40	60	36	42	40	24	37
Resolved (-)	38	39	40	51	31	51	34	40	33	38	44	33	30
End Pending	276	263	273	249	260	269	271	285	293	295	293	292	299
Robbery													
Previous Pending	53	64	55	54	49	52	53	62	76	71	72	74	81
New Filing (+)	20	11	18	14	18	16	19	24	22	22	22	22	13
Resolved (-)	11	25	20	12	20	11	8	22	21	29	17	22	25
End Pending	64	55	54	49	52	53	62	76	71	72	74	81	73
Aggravated Assault													
Previous Pending	496	477	447	468	467	492	479	459	463	476	476	501	477
New Filing (+)	107	83	100	99	124	116	102	115	123	120	139	109	140
Resolved (-)	136	113	104	102	79	135	118	122	105	113	110	121	99
End Pending	477	447	468	467	492	479	459	463	476	476	501	477	509
Burglary/Theft/Larceny													
Previous Pending	675	646	657	638	661	688	746	727	760	771	776	774	797
New Filing (+)	139	137	140	137	162	241	148	139	174	160	184	171	156
Resolved (-)	155	144	169	122	144	158	135	127	160	145	146	170	148
End Pending	646	657	638	661	688	746	727	760	771	776	774	797	763
Motor Vehicle Theft													
Previous Pending	69	67	65	56	59	56	60	62	68	58	69	76	69
New Filing (+)	19	8	16	15	18	22	20	17	19	18	26	15	18
Resolved (-)	17	22	14	12	23	9	17	10	21	9	19	20	15
End Pending	67	65	56	59	56	60	62	68	58	69	76	69	66
Controlled Substance - Non Drug Court (1)													
Previous Pending	385	392	387	351	326	340	344	361	329	345	348	382	412
Resolved (-)	59	73	64	85	63	80	54	68	71	53	54	62	68
End Pending	392	387	351	326	340	344	361	329	345	348	382	412	416
Drug Court (2)													
Previous Pending	310	314	314	324	302	303	309	311	301	300	307	326	309
New Filing (+)	23	18	25	25	15	21	17	16	15	27	31	13	16
Resolved (-)	21	15	3	39	14	18	14	27	7	19	15	31	18
End Pending	314	314	324	302	303	309	311	301	300	307	326	309	303
Other													
Previous Pending	400	413	396	392	405	384	401	407	454	463	482	538	542
New Filing (+)	113	65	90	88	93	94	98	99	123	92	142	107	108
Resolved (-)	91	74	72	78	94	84	55	75	91	63	61	76	84
End Pending	413	396	392	405	384	401	407	454	463	482	538	542	544
Criminal RALJ													
Previous Pending	154	150	159	156	148	149	146	140	133	131	123	118	107
New Filing (+)	12	15	13	12	11	17	8	3	1	6	5	3	16
Resolved (-)	15	5	15	20	10	18	13	11	15	15	11	14	19
End Pending	150	159	156	148	149	146	140	133	131	123	118	107	102
Total Pending Caseload													
SEA (%)	56%	57%	59%	58%	58%	59%	60%	60%	60%	60%	60%	60%	60%
KNT (%)	44%	43%	41%	42%	42%	41%	40%	40%	40%	40%	40%	40%	40%

(*) Information from filing to the reporting time is used to determine crime category for pending cases. The category for a case in this table is the highest crime category since filing. For example, a case initially charged with homicide is reported as a homicide regardless of whether or not the charge is reduced since filing. On the other hand, if the charge for a case is upgraded later, then the reporting category in later reports will reflect the upgraded (higher) crime category.

Reflects all documents received by 11/15/2016. Drug court cases are identified by docket code "ORPAR" (Order for Participation).

Table 6. Age of Pending Criminal Cases
King County Superior Court

Crime Category (*)	Oct 2015	Nov 2015	Dec 2015	Jan 2016	Feb 2016	Mar 2016	Apr 2016	May 2016	Jun 2016	Jul 2016	Aug 2016	Sep 2016	Oct 2016
Total													
Age (days)													
Median (50 th percentile)	109	112	114	112	110	100	100	99	101	109	108	107	109
95 th percentile	578	594	611	593	594	541	536	534	541	544	541	547	550
# of Cases in Age Interval													
0 - 60 days (0 - 2 months)	922	830	836	833	908	1047	990	941	1013	943	1037	1054	959
61-120 days (3 - 4 months)	626	650	606	600	588	570	633	722	692	674	676	646	744
121-180 days (5 - 6 months)	422	395	397	402	396	372	369	380	411	478	474	452	429
181-270 days (7 - 9 months)	370	382	379	348	345	343	336	344	319	359	367	416	413
> 270 days (> 9 months)	521	547	558	551	552	539	542	552	545	563	598	589	600
Homicide													
Age (days)													
Median (50 th percentile)	322	309	288	293	303	270	246	251	268	272	271	284	225
95 th percentile	1329	1062	1093	1124	1153	921	951	818	848	746	694	724	753
# of Cases in Age Interval													
0 - 60 days (0 - 2 months)	9	8	10	8	6	8	12	10	9	7	12	10	10
61-120 days (3 - 4 months)	6	8	8	9	10	8	6	9	11	10	6	8	12
121-180 days (5 - 6 months)	5	7	4	7	8	8	8	7	7	7	9	8	6
181-270 days (7 - 9 months)	5	6	8	6	7	8	10	11	9	10	8	8	10
> 270 days (> 9 months)	37	32	34	38	34	32	34	33	36	35	35	37	32
Sex Crime													
Age (days)													
Median (50 th percentile)	124	141	136	144	133	109	110	103	115	130	128	142	150
95 th percentile	506	509	499	508	475	477	430	412	422	433	422	452	462
# of Cases in Age Interval													
0 - 60 days (0 - 2 months)	63	56	66	58	68	98	91	81	82	68	78	65	64
61-120 days (3 - 4 months)	65	61	55	49	52	42	53	78	80	70	64	60	67
121-180 days (5 - 6 months)	47	47	50	49	43	42	41	42	47	66	61	56	51
181-270 days (7 - 9 months)	43	44	47	43	45	46	44	39	40	45	42	59	60
> 270 days (> 9 months)	58	55	55	50	52	41	42	45	44	46	48	52	57
Robbery													
Age (days)													
Median (50 th percentile)	70	81	57	58	51	56	64	54	57	74	70	58	77
95 th percentile	341	287	318	286	278	203	233	264	184	215	246	258	271
# of Cases in Age Interval													
0 - 60 days (0 - 2 months)	28	24	28	25	28	31	28	40	38	30	35	42	30
61-120 days (3 - 4 months)	16	11	12	11	12	11	20	18	17	20	18	15	21
121-180 days (5 - 6 months)	8	7	5	6	7	7	5	9	12	13	8	8	10
181-270 days (7 - 9 months)	8	10	6	3	2	2	7	7	2	7	11	12	8
> 270 days (> 9 months)	4	3	3	4	3	2	2	2	2	2	2	4	4
Aggravated Assault													
Age (days)													
Median (50 th percentile)	79	92	87	89	83	78	82	83	76	82	77	75	83
95 th percentile	299	321	352	346	358	444	390	329	333	357	351	351	379
# of Cases in Age Interval													
0 - 60 days (0 - 2 months)	194	147	181	185	196	199	173	176	212	192	217	198	199
61-120 days (3 - 4 months)	132	137	101	104	113	119	133	118	101	112	117	114	133
121-180 days (5 - 6 months)	73	76	83	74	72	62	57	76	74	76	62	72	71
181-270 days (7 - 9 months)	47	53	58	55	58	55	55	50	48	52	60	53	56
> 270 days (> 9 months)	31	34	45	49	53	44	41	43	41	46	45	40	50
Burglary/Theft/Larceny													
Age (days)													
Median (50 th percentile)	89	84	92	88	78	69	69	77	84	90	88	90	91
95 th percentile	321	344	350	346	349	358	452	377	386	417	411	424	403
# of Cases in Age Interval													
0 - 60 days (0 - 2 months)	249	245	238	244	276	345	321	296	296	292	273	301	262
121-180 days (5 - 6 months)	149	168	157	165	174	165	174	226	221	195	196	192	205
61-120 days (3 - 4 months)	101	91	88	90	86	98	105	91	109	128	139	125	108
181-270 days (7 - 9 months)	100	94	88	86	75	62	56	71	70	81	73	87	95
> 270 days (> 9 months)	47	59	67	76	77	76	71	76	75	80	93	92	93

(*) The highest crime category since filing is used to classify cases. For example, a case initially charged with homicide is reported as a homicide regardless of whether or not the charge is reduced since filing. On the other hand, if the charge for a case is upgraded later, then the reporting category in later reports will reflect the upgraded (higher) crime category.

Reflects all documents received by 11/15/2016.

(1) "Controlled Substance - Non Drug Court" are drug related cases that have never been accepted into drug court.

(2) "Controlled Substance - Drug Court" are drug related cases that have been formally accepted into drug court (identified by "Order of Participation").

Table 6 (cont.). Age of Pending Criminal Cases
King County Superior Court

Crime Category (*)	Oct 2015	Nov 2015	Dec 2015	Jan 2016	Feb 2016	Mar 2016	Apr 2016	May 2016	Jun 2016	Jul 2016	Aug 2016	Sep 2016	Oct 2016
Motor Vehicle Theft													
Age (days)													
Median (50 th percentile)	60	77	74	62	60	58	54	60	64	56	66	80	61
95 th percentile	255	290	355	327	344	365	230	266	284	311	342	316	347
# of Cases in Age Interval													
0 - 60 days (0 - 2 months)	35	23	21	29	28	31	35	34	28	35	34	30	31
61-120 days (3 - 4 months)	10	18	18	14	11	10	13	18	17	16	21	19	13
121-180 days (5 - 6 months)	8	7	4	9	10	9	4	3	4	8	9	8	10
181-270 days (7 - 9 months)	11	9	5	1	3	4	7	10	5	5	5	6	6
4 > 270 days (> 9 months)	3	8	8	6	4	6	3	3	4	5	7	6	6
Controlled Substance - Non Drug Court⁽¹⁾													
Age (days)													
Median (50 th percentile)	88	83	87	95	89	79	81	90	89	92	73	66	77
95 th percentile	369	389	426	446	409	395	347	350	379	381	398	399	429
# of Cases in Age Interval													
0 - 60 days (0 - 2 months)	143	144	112	108	130	144	146	102	120	134	165	194	169
61-120 days (3 - 4 months)	104	100	110	104	79	79	90	104	107	77	81	94	114
121-180 days (5 - 6 months)	67	58	58	48	61	45	49	49	56	62	57	45	49
181-270 days (7 - 9 months)	40	42	35	38	39	45	43	37	30	36	39	43	42
> 270 days (> 9 months)	38	43	36	28	31	31	33	37	32	39	40	36	42
Drug Court⁽²⁾													
Age (days)													
Median (50 th percentile)	406	418	427	394	389	396	408	418	414	417	412	402	411
95 th percentile	1020	1046	895	866	876	897	913	944	922	956	943	962	918
# of Cases in Age Interval													
0 - 60 days (0 - 2 months)	3	2	2	3	1	3	1	0	0	2	1	2	0
61-120 days (3 - 4 months)	7	10	17	10	13	10	11	11	11	11	10	5	8
121-180 days (5 - 6 months)	29	22	16	30	26	18	23	18	17	22	30	20	16
181-270 days (7 - 9 months)	46	49	48	42	42	47	40	43	43	45	48	51	49
> 270 days (> 9 months)	229	231	241	217	221	231	236	229	229	227	237	231	230
Other													
Age (days)													
Median (50 th percentile)	76	83	83	89	81	77	81	75	72	83	90	90	89
95 th percentile	387	411	414	409	392	367	380	349	312	329	346	333	336
# of Cases in Age Interval													
0 - 60 days (0 - 2 months)	174	154	150	149	153	161	159	191	212	165	212	204	176
61-120 days (3 - 4 months)	97	103	108	107	96	103	112	114	106	153	146	122	160
121-180 days (5 - 6 months)	49	48	49	63	64	59	50	64	64	71	78	100	92
181-270 days (7 - 9 months)	45	40	42	36	29	37	48	49	45	51	56	70	69
> 270 days (> 9 months)	48	51	43	50	42	41	38	36	36	42	46	46	47
Criminal RALJ													
Age (days)													
Median (50 th percentile)	145	152	171	166	188	169	174	191	198	199	213	227	216
95 th percentile	612	642	673	704	733	486	473	530	506	486	626	656	687
# of Cases in Age Interval													
0 - 60 days (0 - 2 months)	24	27	28	24	22	27	24	11	16	18	10	8	18
61-120 days (3 - 4 months)	40	34	20	27	28	23	21	26	21	10	17	7	11
121-180 days (5 - 6 months)	35	32	40	26	19	24	27	21	21	25	21	10	16
181-270 days (7 - 9 months)	25	35	42	38	45	37	26	27	27	29	25	27	18
> 270 days (> 9 months)	26	31	26	33	35	35	42	48	46	41	45	45	39

(*) The highest crime category since filing is used to classify cases. For example, a case initially charged with homicide is reported as a homicide regardless of whether or not the charge is reduced since filing. On the other hand, if the charge for a case is upgraded later, then the reporting category in later reports will reflect the upgraded (higher) crime category.

Reflects all documents received by 11/15/2016.

(1) "Controlled Substance - Non Drug Court" are drug related cases that have never been accepted into drug court.

(2) "Controlled Substance - Drug Court" are drug related cases that have been formally accepted into drug court (identified by "Order of Participation").

Table 7. Comparison between SEA/KNT: Filings, Resolutions, and Pending Caseload
King County Superior Court

	Nov 2015	Dec 2015	Jan 2016	Feb 2016	Mar 2016	Apr 2016	May 2016	Jun 2016	Jul 2016	Aug 2016	Sep 2016	Oct 2016 ⁽¹⁾
Total Filings												
SEA - # of Cases Filed	231	284	284	331	360	306	265	347	337	379	297	315
KNT - # of Cases Filed	182	207	189	225	298	206	236	258	212	316	253	258
SEA %	56%	58%	60%	59%	55%	60%	53%	57%	61%	54%	54%	55%
KNT %	44%	42%	40%	41%	45%	40%	47%	43%	39%	46%	46%	45%
Total Resolutions												
SEA - # of Cases Resolved	255	273	294	273	283	211	257	302	278	262	283	268
KNT - # of Cases Resolved	246	231	189	194	270	224	223	218	194	205	239	227
SEA - Drug Court Cases Resolved	13	3	25	15	13	8	19	5	17	13	20	11
KNT - Drug Court Cases Resolved	2	0	14	2	5	6	8	2	2	2	11	7
SEA %	49%	53%	56%	56%	50%	47%	51%	57%	57%	54%	51%	52%
KNT %	48%	46%	36%	40%	47%	50%	44%	41%	40%	43%	43%	44%
SEA - Drug Court %	3%	1%	5%	3%	2%	2%	4%	1%	3%	3%	4%	2%
KNT - Drug Court %	0%	0%	3%	1%	1%	1%	2%	0%	0%	0%	2%	1%
Total Pending												
SEA - # of Cases Pending	1378	1397	1361	1392	1471	1511	1566	1571	1606	1650	1675	1674
KNT - # of Cases Pending	1112	1055	1071	1094	1091	1048	1072	1109	1104	1176	1173	1168
SEA - Drug Court Cases Pending	212	233	218	216	215	214	209	212	217	232	220	215
KNT - Drug Court Cases Pending	102	91	84	87	94	97	92	88	90	94	89	88
SEA %	49%	50%	50%	50%	51%	53%	53%	53%	53%	52%	53%	53%
KNT %	40%	38%	39%	39%	38%	37%	36%	37%	37%	37%	37%	37%
SEA - Drug Court %	8%	8%	8%	8%	7%	7%	7%	7%	7%	7%	7%	7%
KNT - Drug Court %	4%	3%	3%	3%	3%	3%	3%	3%	3%	3%	3%	3%

(1) Reflects all documents received by 11/15/2016.

(2) The number of judges does not include RJC chief judge and the criminal chief judge at SEA.

Table 8. Drug Court Statistics

King County Superior Court

Categories	Sep 2015	Oct 2015	Oct 2015	Dec 2015	Jan 2016	Feb 2016	Mar 2016	Apr 2016	May 2016	Jun 2016	Jul 2016	Aug 2016	Sep 2016	Oct 2016
Referrals - Total	48	25	34	28	31	28	23	51	31	56	46	63	45	42
Directly from PA	35	13	22	17	18	17	11	24	10	27	22	38	29	14
From Mainstream	14	12	12	11	13	11	22	27	21	39	24	25	16	28
Arraignments in Drug Court ⁽¹⁾	29	24	13	24	13	13	15	16	17	15	11	26	27	23
GP in Drug Court ⁽²⁾	0	0	5	1	1	3	2	0	0	1	0	1	0	1
Return to mainstream ⁽³⁾	17	25	13	8	31	12	13	7	10	12	11	11	24	13
Opt-in ⁽⁴⁾	21	23	18	25	25	15	21	17	16	15	27	31	13	16
Graduations ⁽⁵⁾	10	17	12	0	27	14	9	11	22	5	14	8	22	6
Terminations ⁽⁶⁾	3	4	3	3	12	3	9	3	5	2	5	7	9	12

- (1) Arraignments held in drug court regardless opt-in status of the cases.
- (2) Guilty pleas entered in drug court before opt-in.
- (3) Referred to drug court but decision by court order to go to mainstream.
- (4) Opt-in reflects the court order of participation.
- (5) Graduations are dismissals of opted-in cases after the completion of program.
- (6) Terminations are cases that fail in drug court.