

King County Superior Court  
Criminal Department Statistical Report

October 2017

Department of Judicial Administration  
Prepared by: Shiquan Liao, Ph.D., Statistician

Release date: November 20, 2017

**Report #: CRM-2017-10**

## Terminology

### **Age of Pending Case**

Time (days) from filing to resolution, less suspense time if applicable.

### **Age of Resolved Case**

Time (days) from filing to resolution, less suspense time if applicable.

### **End Pending**

Number of pending cases at the end of reporting period.

### **Net Change in Pending**

The change in number of pending cases (end pending minus previous pending).

### **Pending Case**

A case is defined as pending if it is unresolved and not on suspense status.

### **Previous Pending**

Number of pending cases at the beginning of reporting period.

### **Reactivated Case**

A case returns to active from suspense status during the reporting period.

### **Resolution**

A case is resolved if all issues in the complaint are fully adjudicated. However, a drug court case is reported as resolved only when dispositive document is also filed (completed).

### **Resolution Category**

Five resolution categories are used to report resolution of criminal cases: jury trial (CVJV, AQJV), non-jury trial (CVCT, AQCT), guilty plea (GP, GPAT, GPJT), dismissal (DSM), and other (all other resolution codes). For criminal RALJ cases, the resolution categories are: RALJ decision (CDTA, CDTM, CDTR), dismissal (DSRM), and others (any other resolution codes).

### **Suspended Case**

A case is placed in suspense status (removing from active) during the reporting period.

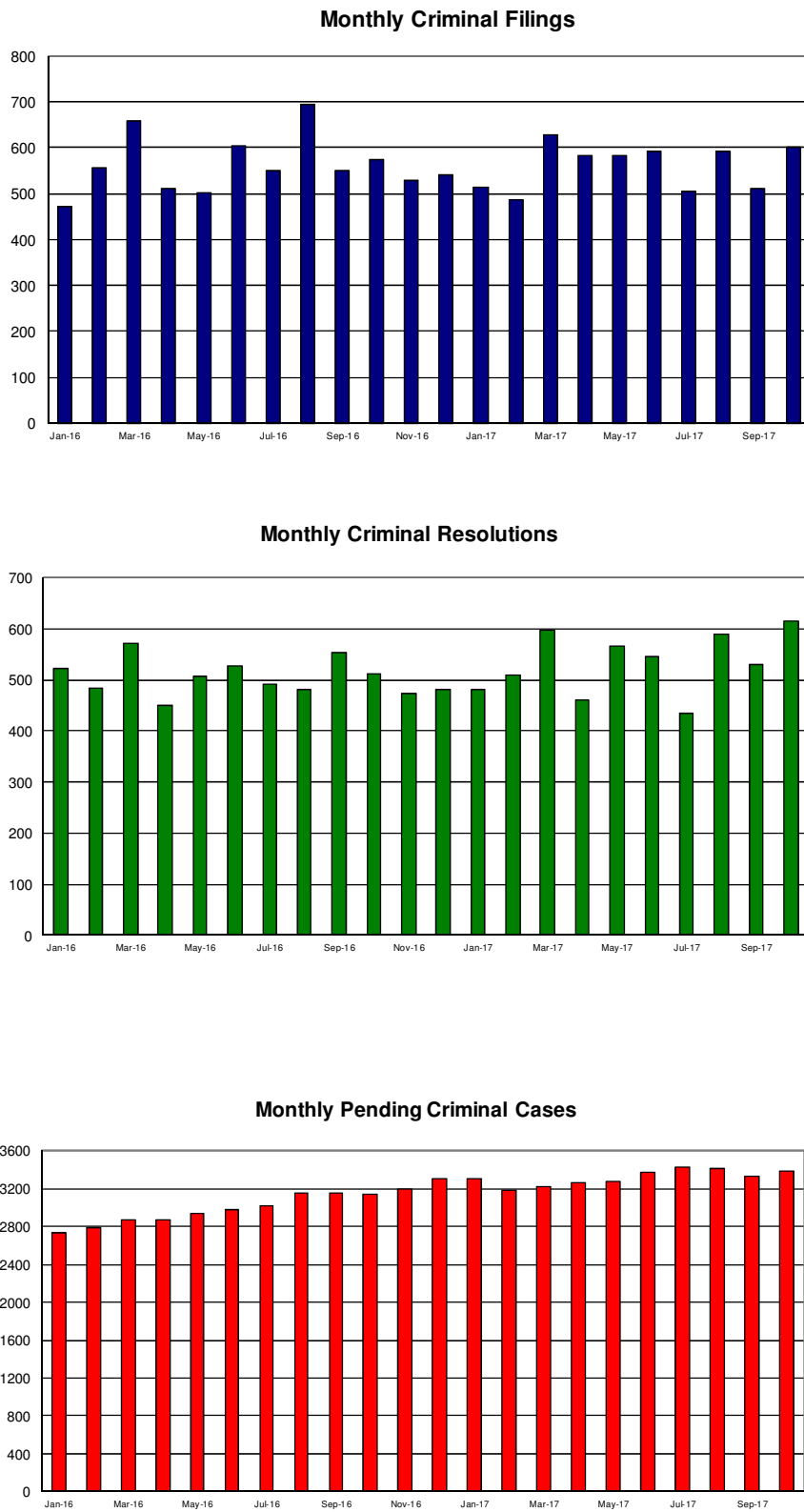
### **Suspense Status**

A case is said to be on suspense status if it is on warrant or appeal.

### **Suspense Time**

Time (days) a case is on suspense status.

Figure 1. Number of Criminal Filings, Resolutions and Pending Caseload by Month



Note: Starting January 2010, RALJ cases are included.

Figure 2. Crime Category as a Percentage of Total Filings by Year

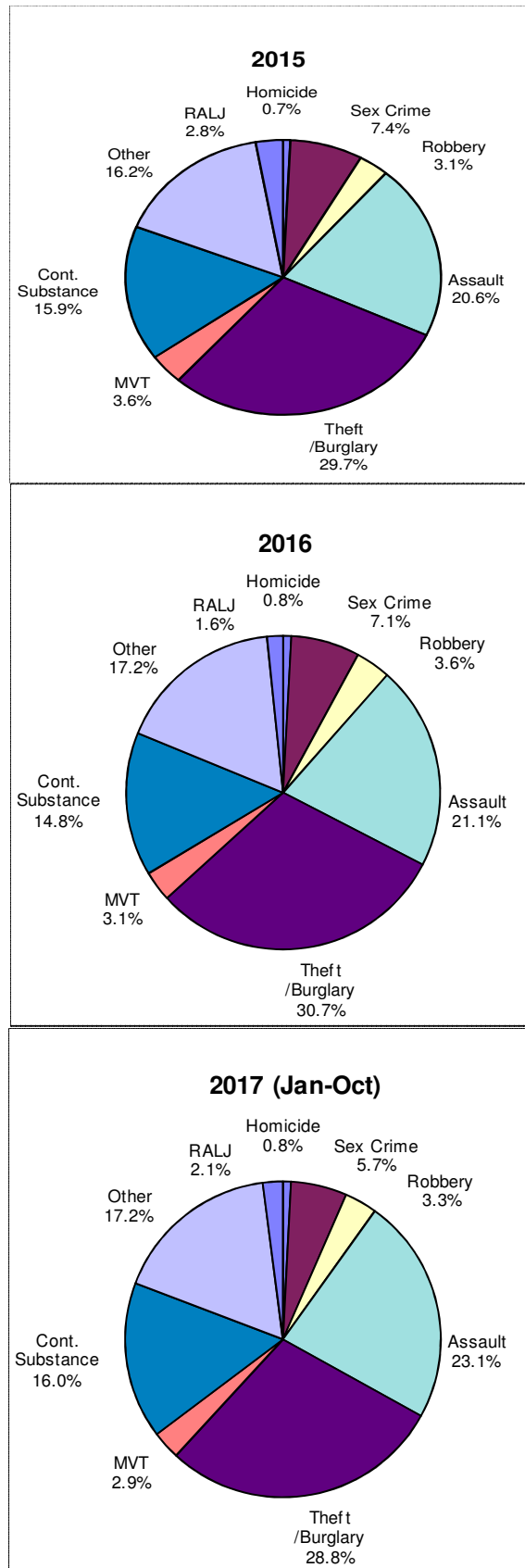


Table 1. Monthly Criminal New Filings by Crime Category (\*)  
King County Superior Court

	Jan	Feb	Mar	Apr	May	Jun	Jul	Aug	Sep	Oct	Nov	Dec	ADJ <sup>(1)</sup>	Annual
<b>Total</b>														
2014	512	514	604	623	551	449	518	506	487	590	468	558	(+6)	6383
2015	525	544	647	590	582	590	458	518	525	531	413	491	(+4)	6418
2016	473	556	658	512	501	605	549	695	550	573	528	542	(+1)	6743
2017 <sup>(2)</sup>	515	486	629	582	583	591	506	593	510	600				
<b>Homicide</b>														
2014	3	2	9	4	4	4	11	5	2	1	6	2	(-2)	51
2015	4	0	3	5	0	6	3	6	2	4	4	6	(+4)	47
2016	2	3	7	6	4	4	7	4	4	5	4	5	(+1)	56
2017 <sup>(2)</sup>	7	2	1	5	2	7	3	9	5	5				
<b>Sex Crime</b>														
2014	37	38	52	42	24	36	37	30	49	38	36	43	(-6)	456
2015	37	46	42	38	52	37	32	49	40	38	23	42	(+2)	478
2016	39	46	53	40	60	36	42	40	24	37	32	24	(+5)	478
2017 <sup>(2)</sup>	15	27	24	44	55	24	27	46	27	32				
<b>Robbery</b>														
2014	50	28	26	13	11	9	12	9	14	16	11	13	(-35)	177
2015	20	10	20	18	18	18	10	8	12	20	11	18	(+17)	200
2016	14	18	16	19	24	22	22	22	22	13	12	19	(+19)	242
2017 <sup>(2)</sup>	16	22	28	17	23	18	20	14	14	15				
<b>Aggravated Assault</b>														
2014	128	109	137	109	113	116	130	121	100	106	87	108	(+29)	1393
2015	107	105	99	115	117	99	120	130	111	107	83	100	(+30)	1323
2016	99	124	116	102	115	123	120	139	109	140	90	110	(+35)	1422
2017 <sup>(2)</sup>	115	105	146	125	128	136	117	148	132	143				
<b>Burglary/Theft /Larceny</b>														
2014	122	140	162	182	167	109	132	145	148	205	127	172	(+17)	1928
2015	144	159	243	185	165	177	119	125	136	139	137	140	(+34)	1903
2016	137	162	241	148	139	174	160	184	171	156	186	180	(+30)	2068
2017 <sup>(2)</sup>	173	164	190	167	166	160	140	142	139	170				
<b>Motor Vehicle Theft</b>														
2014	13	15	24	23	19	10	16	6	13	16	10	33	(+3)	201
2015	22	26	34	21	23	21	12	20	16	19	8	16	(-9)	229
2016	15	18	22	20	17	19	18	26	15	18	23	10	(-10)	211
2017 <sup>(2)</sup>	16	11	18	22	11	21	12	20	13	19				
<b>Controlled Substance</b>														
2014	74	87	116	142	104	80	68	84	74	99	81	82	(+7)	1098
2015	77	91	90	110	104	115	62	63	94	79	67	66	(+1)	1019
2016	67	81	92	71	40	91	82	133	95	80	74	93	(-2)	997
2017 <sup>(2)</sup>	79	80	91	79	92	99	79	109	80	109				
<b>Other</b>														
2014	73	77	65	98	100	71	99	85	75	93	96	86	(-8)	1010
2015	111	93	99	84	83	100	80	94	102	113	65	90	(-75)	1039
2016	88	93	94	98	90	123	92	142	107	108	96	95	(-77)	1158
2017 <sup>(2)</sup>	93	69	114	109	87	107	101	95	91	94				
<b>Criminal RALJ</b>														
2014	12	18	13	10	9	14	13	21	12	16	14	19	(+1)	172
2015	3	14	17	14	20	17	20	23	12	12	15	13	(0)	180
2016	12	11	17	8	3	13	6	5	3	16	11	6	(0)	111
2017 <sup>(2)</sup>	1	6	17	14	19	19	7	10	9	13				
<b>KNT Filing as % of Total</b>														
2014	46%	47%	48%	47%	46%	44%	43%	46%	43%	50%	46%	46%		45%
2015	46%	47%	48%	42%	44%	44%	42%	49%	44%	45%	44%	42%		45%
2016	40%	41%	45%	40%	47%	43%	39%	46%	46%	45%	46%	44%		44%
2017 <sup>(2)</sup>	48%	44%	45%	42%	46%	41%	40%	47%	48%	44%				

(\*) The highest crime category in a case's history is used to classify cases. For example, a case charged with homicide at any time in the case's history is reported as a homicide regardless of whether the charge is reduced at resolution.

(1) "ADJ" = year-end adjustment.

(2) Reflects all documents received by 11/15/2017.

Table 2. Monthly Criminal Case Resolutions by Crime Category  
King County Superior Court

	Jan	Feb	Mar	Apr	May	Jun	Jul	Aug	Sep	Oct	Nov	Dec	ADJ <sup>(1)</sup>	Annual
<b>Total</b>														
2014	495	495	528	490	513	486	584	474	523	605	437	526	(+11)	6167
2015	547	445	560	680	529	578	567	526	583	546	516	505	(+7)	6589
2016	522	484	571	449	507	527	491	482	553	513	472	480	(+26)	6077
2017 <sup>(2)</sup>	480	509	596	461	565	546	434	589	529	614				
<b>Homicide</b>														
2014	2	5	6	6	3	1	3	2	5	2	3	6	(+1)	45
2015	3	2	5	7	5	6	4	5	2	3	6	4	(0)	52
2016	1	3	7	1	5	3	7	5	4	7	5	2	(0)	50
2017 <sup>(2)</sup>	3	4	2	4	6	2	4	4	4	6				
<b>Sex Crime</b>														
2014	40	47	40	36	50	34	39	34	36	42	20	34	(-1)	451
2015	28	29	36	42	42	33	46	36	36	38	39	40	(+1)	446
2016	51	31	51	34	40	33	38	44	33	30	34	32	(+4)	455
2017 <sup>(2)</sup>	37	34	37	18	37	31	23	36	34	35				
<b>Robbery</b>														
2014	43	41	41	24	24	17	26	25	15	14	14	23	(-44)	263
2015	15	14	19	13	18	27	23	19	14	11	25	20	(+1)	219
2016	12	20	11	8	22	21	29	17	22	25	29	16	(0)	232
2017 <sup>(2)</sup>	22	24	28	20	20	20	13	25	23	26				
<b>Aggravated Assault</b>														
2014	101	103	113	112	104	107	125	119	103	153	129	112	(+17)	1398
2015	126	96	118	136	124	106	110	83	128	136	113	104	(+3)	1383
2016	102	79	135	118	122	105	113	110	121	99	101	107	(+12)	1324
2017 <sup>(2)</sup>	116	104	147	108	105	111	108	108	118	137				
<b>Burglary/Theft /Larceny</b>														
2014	123	133	150	125	141	122	171	126	171	149	115	145	(+7)	1678
2015	138	122	176	224	141	189	165	181	168	155	144	169	(-3)	1969
2016	122	144	158	135	127	160	145	146	170	148	134	146	(0)	1735
2017 <sup>(2)</sup>	127	157	158	128	171	180	121	171	129	169				
<b>Motor Vehicle Theft</b>														
2014	14	16	8	16	15	28	11	11	13	16	16	13	(0)	177
2015	13	21	14	20	19	24	13	16	29	17	22	14	(0)	222
2016	12	23	9	17	10	21	9	19	20	15	17	17	(0)	189
2017 <sup>(2)</sup>	14	18	13	10	18	14	10	12	18	14				
<b>Controlled Substance - Non Drug Court</b>														
2014	69	62	74	72	65	73	86	70	81	94	61	83	(+1)	891
2015	85	64	78	116	68	76	93	75	69	59	73	64	(0)	920
2016	85	63	80	54	68	71	53	54	62	68	59	72	(+1)	790
2017 <sup>(2)</sup>	51	65	71	66	71	82	57	100	76	90				
<b>Drug Court</b>														
2014	20	25	14	15	17	22	20	18	14	21	12	8	(+4)	210
2015	30	14	16	13	18	17	15	21	13	21	15	3	(+4)	200
2016	39	17	18	14	27	7	19	15	31	18	16	18	(+5)	244
2017 <sup>(2)</sup>	31	23	28	18	39	19	16	21	25	31				
<b>Other</b>														
2014	66	54	67	73	75	64	87	57	72	97	60	94	(+27)	893
2015	90	71	84	91	78	79	86	79	108	91	74	72	(+2)	1005
2016	78	94	84	55	75	91	63	61	76	84	70	63	(+5)	899
2017 <sup>(2)</sup>	69	71	101	79	85	76	76	100	88	94				
<b>Criminal RALJ</b>														
2014	17	9	15	11	19	18	16	12	13	17	7	8	(-1)	161
2015	19	12	14	18	16	21	12	11	16	15	5	15	(-1)	173
2016	20	10	18	13	11	15	15	11	14	19	7	7	(-1)	159
2017 <sup>(2)</sup>	10	9	11	10	13	11	6	12	14	12				
<b>KNT as % of Total</b>														
2014	38%	45%	40%	40%	42%	49%	44%	46%	49%	44%	43%	43%		42%
2015	46%	46%	52%	55%	50%	52%	43%	47%	45%	46%	48%	46%		47%
2016	39%	41%	48%	51%	46%	42%	40%	43%	45%	46%	41%	40%		43%
2017 <sup>(2)</sup>	43%	40%	42%	45%	43%	43%	41%	40%	42%	44%				

The highest crime category in a case's history is used to classify cases. For example, a case charged with homicide at any time in the case's history is reported as a homicide regardless of whether the charge is reduced at resolution.

- (1) "ADJ" = year-end adjustment.
- (2) Reflects all documents received by 11/15/2017.
- (3) "Controlled Substance - Non Drug Court" are drug related cases that have never been accepted into drug court.
- (4) "Controlled Substance - Drug Court" are drug related cases that have been formally accepted into drug court (identified by "Order of Participation").

Table 3. Number of Cases Resolved and Resolution Category  
King County Superior Court

Crime Category (*)	Nov 2016	Dec 2016	Jan 2017	Feb 2017	Mar 2017	Apr 2017	May 2017	Jun 2017	Jul 2017	Aug 2017	Sep 2017	Oct 2017
<b>Homicide</b>	<b>5</b>	<b>2</b>	<b>3</b>	<b>4</b>	<b>2</b>	<b>4</b>	<b>6</b>	<b>2</b>	<b>4</b>	<b>4</b>	<b>4</b>	<b>6</b>
Resolved by Jury Trial	1	2	0	0	1	0	1	1	1	1	0	2
Resolved by Non-Jury Trial	0	0	0	0	0	1	0	0	0	0	0	0
Resolved by Guilty Plea	4	0	3	4	1	2	5	1	3	3	4	4
Dismissal	0	0	0	0	0	0	0	0	0	0	0	0
Others	0	0	0	0	0	1	0	0	0	0	0	0
<b>Sex Crime</b>	<b>34</b>	<b>32</b>	<b>37</b>	<b>34</b>	<b>37</b>	<b>18</b>	<b>37</b>	<b>31</b>	<b>23</b>	<b>36</b>	<b>34</b>	<b>35</b>
Resolved by Jury Trial	1	2	1	3	3	3	2	5	0	4	2	2
Resolved by Non-Jury Trial	0	0	0	0	0	0	0	0	0	0	0	0
Resolved by Guilty Plea	27	27	28	26	32	11	33	24	21	28	24	29
Dismissal	6	3	8	5	2	4	2	2	2	4	8	4
Others	0	0	0	0	0	0	0	0	0	0	0	0
<b>Robbery</b>	<b>29</b>	<b>16</b>	<b>22</b>	<b>24</b>	<b>28</b>	<b>20</b>	<b>20</b>	<b>20</b>	<b>13</b>	<b>25</b>	<b>23</b>	<b>26</b>
Resolved by Jury Trial	0	1	0	0	0	0	2	1	2	1	0	0
Resolved by Non-Jury Trial	0	0	0	0	0	0	0	0	0	0	0	0
Resolved by Guilty Plea	29	12	21	21	26	18	14	19	11	23	23	25
Dismissal	0	3	1	3	2	2	4	0	0	1	0	1
Others	0	0	0	0	0	0	0	0	0	0	0	0
<b>Aggravated Assault</b>	<b>101</b>	<b>107</b>	<b>116</b>	<b>104</b>	<b>147</b>	<b>108</b>	<b>105</b>	<b>111</b>	<b>108</b>	<b>108</b>	<b>118</b>	<b>137</b>
Resolved by Jury Trial	3	2	7	9	0	4	5	8	7	7	10	7
Resolved by Non-Jury Trial	0	1	0	1	124	0	0	0	1	0	0	0
Resolved by Guilty Plea	84	91	92	80	16	84	86	84	84	89	91	116
Dismissal	14	13	17	13	0	20	14	19	17	12	16	13
Others	0	0	0	1	0	0	0	0	0	0	1	1
<b>Burglary/Theft/Larceny</b>	<b>134</b>	<b>146</b>	<b>127</b>	<b>157</b>	<b>158</b>	<b>128</b>	<b>171</b>	<b>180</b>	<b>121</b>	<b>171</b>	<b>129</b>	<b>169</b>
Resolved by Jury Trial	3	1	2	3	5	1	2	1	2	3	0	5
Resolved by Non-Jury Trial	0	0	0	0	0	0	0	1	0	0	1	0
Resolved by Guilty Plea	119	134	116	139	136	116	155	164	107	159	113	152
Dismissal	12	11	9	15	17	11	14	14	12	9	15	12
Others	0	0	0	0	0	0	0	0	0	0	0	0
<b>Motor Vehicle Theft</b>	<b>17</b>	<b>17</b>	<b>14</b>	<b>18</b>	<b>13</b>	<b>10</b>	<b>18</b>	<b>14</b>	<b>10</b>	<b>12</b>	<b>18</b>	<b>14</b>
Resolved by Jury Trial	0	0	0	0	0	0	0	0	0	0	0	0
Resolved by Non-Jury Trial	0	0	0	0	0	0	0	0	0	0	0	0
Resolved by Guilty Plea	16	14	10	14	8	8	17	12	10	12	16	13
Dismissal	1	3	4	4	5	2	1	2	0	0	2	1
Others	0	0	0	0	0	0	0	0	0	0	0	0
<b>Controlled Substance - Non Drug Court<sup>(1)</sup></b>	<b>59</b>	<b>72</b>	<b>51</b>	<b>65</b>	<b>71</b>	<b>66</b>	<b>71</b>	<b>82</b>	<b>57</b>	<b>100</b>	<b>76</b>	<b>90</b>
Resolved by Jury Trial	0	1	1	0	0	1	0	2	0	0	1	0
Resolved by Non-Jury Trial	0	0	0	0	0	0	0	0	0	2	1	0
Resolved by Guilty Plea	47	59	41	54	60	49	55	67	43	82	59	74
Dismissal	12	12	9	11	11	16	16	13	14	16	15	16
Others	0	0	0	0	0	0	0	0	0	0	0	0
<b>Drug Court<sup>(2)</sup></b>	<b>16</b>	<b>18</b>	<b>31</b>	<b>23</b>	<b>28</b>	<b>18</b>	<b>39</b>	<b>19</b>	<b>16</b>	<b>21</b>	<b>25</b>	<b>31</b>
Resolved by Non-Jury Trial	0	1	0	0	0	1	1	1	4	1	7	5
Resolved by Guilty Plea	5	12	7	11	2	9	9	1	8	3	6	7
Dismissal	11	5	24	12	18	8	29	16	4	17	12	19
Others	0	0	0	0	8	0	0	0	0	0	0	0
<b>Other</b>	<b>70</b>	<b>63</b>	<b>69</b>	<b>71</b>	<b>101</b>	<b>79</b>	<b>85</b>	<b>76</b>	<b>76</b>	<b>100</b>	<b>88</b>	<b>94</b>
Resolved by Jury Trial	2	1	1	2	6	1	3	3	6	1	3	2
Resolved by Non-Jury Trial	0	0	1	0	0	2	0	0	0	0	0	0
Resolved by Guilty Plea	55	41	47	46	71	51	62	47	47	74	62	65
Dismissal	9	12	15	19	17	15	14	18	16	20	17	23
Others	4	9	5	4	7	10	6	8	7	5	6	4
<b>Criminal RALJ</b>	<b>7</b>	<b>7</b>	<b>10</b>	<b>9</b>	<b>11</b>	<b>10</b>	<b>13</b>	<b>11</b>	<b>6</b>	<b>12</b>	<b>14</b>	<b>1</b>
RALJ Decision	4	5	7	7	9	9	7	8	2	6	9	9
Dismissal	2	0	3	1	2	1	3	2	4	6	5	3
Others	1	2	0	1	0	0	3	1	0	0	0	0

(\*) The highest crime category in a case's history is used to classify cases.

Reflects all documents received by **11/15/2017**.

(1) "Controlled Substance - Non Drug Court" are drug related cases that have never been accepted into drug court.

(2) "Controlled Substance - Drug Court" are drug related cases that have been formally accepted into drug court (identified by "Order of Participation").

(3) DV Subset includes cases with a DV flag in at least one of the charges within the specific crime category at the time of the reporting.

Table 4. Age (days) of Resolved Cases  
King County Superior Court

Crime Category (*)	Nov 2016	Dec 2016	Jan 2017	Feb 2017	Mar 2017	Apr 2017	May 2017	Jun 2017	Jul 2017	Aug 2017	Sep 2017	Oct 2017
<b>Homicide (**)</b>												
50% Cases Resolved by Day	450	498	430	597	563	330	334	497	601	396	421	486
90% Cases Resolved by Day	770	594	653	831	823	3997	856	839	913	941	1076	909
Average Time (days)	460	498	403	543	563	1179	365	497	654	484	501	489
<b>Sex Crime</b>												
50% Cases Resolved by Day	183	211	271	189	218	202	232	233	229	299	269	196
90% Cases Resolved by Day	398	457	379	423	428	490	488	454	526	622	681	469
Average Time (days)	224	218	273	220	234	232	245	234	260	316	318	252
<b>Robbery</b>												
50% Cases Resolved by Day	91	92	122	144	120	89	98	114	130	108	139	92
90% Cases Resolved by Day	261	203	246	338	357	512	322	244	294	208	304	203
Average Time (days)	106	115	139	183	166	190	149	132	866	128	164	117
<b>Aggravated Assault</b>												
50% Cases Resolved by Day	113	85	122	106	99	95	113	98	109	104	114	120
90% Cases Resolved by Day	309	249	270	250	306	270	285	271	275	293	304	323
Average Time (days)	151	119	213	121	136	135	144	146	133	149	144	161
<b>Burglary/Theft/Larceny</b>												
50% Cases Resolved by Day	112	101	112	127	120	100	113	102	125	113	118	118
90% Cases Resolved by Day	305	269	274	279	316	358	292	299	312	278	274	284
Average Time (days)	146	132	143	141	148	146	146	142	150	147	140	155
<b>Motor Vehicle Theft</b>												
50% Cases Resolved by Day	69	73	66	132	62	130	101	91	98	94	102	149
90% Cases Resolved by Day	145	237	146	441	211	170	269	221	207	268	237	295
Average Time (days)	86	101	94	179	102	113	113	102	113	127	116	160
<b>Controlled Substance</b>												
50% Cases Resolved by Day	105	96	127	102	133	104	121	128	102	117	125	126
90% Cases Resolved by Day	239	265	275	247	280	310	234	297	273	335	262	300
Average Time (days)	126	126	140	150	162	133	135	149	140	150	138	152
<b>Drug Court (2)</b>												
50% Cases Resolved by Day	620	421	554	483	606	537	615	661	420	665	546	575
90% Cases Resolved by Day	820	741	816	872	1101	847	1052	928	731	834	707	977
Average Time (days)	603	419	598	538	597	573	664	674	427	614	533	620
<b>Other</b>												
50% Cases Resolved by Day	92	125	114	113	126	162	141	128	119	122	109	118
90% Cases Resolved by Day	271	220	286	213	310	298	319	324	328	338	313	336
Average Time (days)	129	132	191	121	251	162	157	262	155	166	149	246
<b>Criminal RALJ</b>												
50% Cases Resolved by Day	269	373	389	310	333	399	214	241	316	338	327	242
90% Cases Resolved by Day	521	1099	586	693	463	778	350	457	525	655	629	505
Average Time (days)	279	494	383	360	355	487	289	281	332	374	373	288

(\*) The highest crime category in a case's history is used to classify cases. For example, a case charged with homicide at any time during the case's history is reported as a homicide regardless of whether the charge is reduced at resolution.

(\*\*) Due to small number of resolutions in this category, the age statistics for homicides are expected to vary considerably.

Reflects all documents received by 11/15/2017.

(1) "Controlled Substance - Non Drug Court" are drug related cases that have never been accepted into drug court.

(2) "Controlled Substance - Drug Court" are drug related cases that have been formally accepted into drug court (identified by "Order of Participation").

(3) DV Subset includes cases with a DV flag in at least one of the charges within the specific crime category at the time of the reporting.



Table 5. Pending Criminal Cases  
King County Superior Court

Crime Category (*)	Oct 2016	Nov 2016	Dec 2016	Jan 2017	Feb 2017	Mar 2017	Apr 2017	May 2017	Jun 2017	Jul 2017	Aug 2017	Sep 2017	Oct 2017
<b>Total</b>													
Previous Pending	3157	3145	3195	3300	3301	3182	3224	3268	3278	3371	3425	3417	3330
New Filing (+)	573	528	542	515	486	629	582	583	591	506	593	510	600
Resolved (-)	513	472	480	480	509	596	461	565	546	434	589	529	614
<b>End Pending</b>	<b>3145</b>	<b>3195</b>	<b>3300</b>	<b>3301</b>	<b>3182</b>	<b>3224</b>	<b>3268</b>	<b>3278</b>	<b>3371</b>	<b>3425</b>	<b>3417</b>	<b>3330</b>	<b>3381</b>
<b>Homicide</b>													
Previous Pending	71	70	65	70	71	70	72	74	69	70	72	73	75
New Filing (+)	5	4	5	7	2	1	5	2	7	3	9	5	5
Resolved (-)	7	5	2	3	4	2	4	6	2	4	4	4	6
<b>End Pending</b>	<b>70</b>	<b>65</b>	<b>70</b>	<b>71</b>	<b>70</b>	<b>72</b>	<b>74</b>	<b>69</b>	<b>70</b>	<b>72</b>	<b>73</b>	<b>75</b>	<b>72</b>
<b>Sex Crime</b>													
Previous Pending	292	299	290	299	273	273	261	276	282	293	299	289	280
New Filing (+)	37	32	24	15	27	24	44	55	24	27	46	27	32
Resolved (-)	30	34	32	37	34	37	18	37	31	23	36	34	35
<b>End Pending</b>	<b>299</b>	<b>290</b>	<b>299</b>	<b>273</b>	<b>271</b>	<b>261</b>	<b>276</b>	<b>282</b>	<b>293</b>	<b>299</b>	<b>289</b>	<b>280</b>	<b>274</b>
<b>Robbery</b>													
Previous Pending	81	73	67	80	68	68	77	79	74	83	90	85	70
New Filing (+)	13	12	19	16	22	28	17	23	18	20	14	14	15
Resolved (-)	25	29	16	22	24	28	20	20	20	13	25	23	26
<b>End Pending</b>	<b>73</b>	<b>67</b>	<b>80</b>	<b>68</b>	<b>68</b>	<b>77</b>	<b>79</b>	<b>74</b>	<b>83</b>	<b>90</b>	<b>85</b>	<b>70</b>	<b>70</b>
<b>Aggravated Assault</b>													
Previous Pending	477	509	528	551	548	528	516	518	563	598	607	645	658
New Filing (+)	140	90	110	115	105	146	125	128	136	117	148	132	143
Resolved (-)	99	101	107	116	104	147	108	105	111	108	108	118	137
<b>End Pending</b>	<b>509</b>	<b>528</b>	<b>551</b>	<b>548</b>	<b>528</b>	<b>516</b>	<b>518</b>	<b>563</b>	<b>598</b>	<b>607</b>	<b>645</b>	<b>658</b>	<b>675</b>
<b>Burglary/Theft/Larceny</b>													
Previous Pending	797	763	789	830	846	816	838	851	853	853	855	849	810
New Filing (+)	156	186	180	173	164	190	167	166	160	140	142	139	170
Resolved (-)	148	134	146	127	157	158	128	171	180	121	171	129	169
<b>End Pending</b>	<b>763</b>	<b>789</b>	<b>830</b>	<b>846</b>	<b>816</b>	<b>838</b>	<b>851</b>	<b>853</b>	<b>853</b>	<b>855</b>	<b>849</b>	<b>810</b>	<b>837</b>
<b>Motor Vehicle Theft</b>													
Previous Pending	69	66	74	67	69	64	70	79	73	68	71	82	71
New Filing (+)	18	23	10	16	11	18	22	11	21	12	20	13	19
Resolved (-)	15	17	17	14	18	13	10	18	14	10	12	18	14
<b>End Pending</b>	<b>66</b>	<b>74</b>	<b>67</b>	<b>69</b>	<b>64</b>	<b>70</b>	<b>79</b>	<b>73</b>	<b>68</b>	<b>71</b>	<b>82</b>	<b>71</b>	<b>76</b>
<b>Controlled Substance - Non Drug Court <sup>(1)</sup></b>													
Previous Pending	412	416	413	406	441	429	434	427	438	444	457	445	442
Resolved (-)	68	70	72	51	65	71	66	71	82	57	100	76	90
<b>End Pending</b>	<b>416</b>	<b>413</b>	<b>406</b>	<b>441</b>	<b>429</b>	<b>434</b>	<b>427</b>	<b>438</b>	<b>444</b>	<b>457</b>	<b>445</b>	<b>442</b>	<b>460</b>
<b>Drug Court <sup>(2)</sup></b>													
Previous Pending	309	303	314	321	313	296	308	293	265	274	271	262	262
New Filing (+)	16	22	19	23	14	29	12	17	21	16	26	17	20
Resolved (-)	18	16	18	31	23	28	18	39	19	16	21	25	31
<b>End Pending</b>	<b>303</b>	<b>314</b>	<b>321</b>	<b>313</b>	<b>296</b>	<b>308</b>	<b>293</b>	<b>265</b>	<b>274</b>	<b>271</b>	<b>262</b>	<b>262</b>	<b>256</b>
<b>Other</b>													
Previous Pending	542	544	549	569	574	542	540	558	541	559	571	555	533
New Filing (+)	108	96	95	93	69	114	109	87	107	101	95	91	94
Resolved (-)	84	70	63	69	71	101	79	85	76	76	100	88	94
<b>End Pending</b>	<b>544</b>	<b>549</b>	<b>569</b>	<b>574</b>	<b>542</b>	<b>540</b>	<b>558</b>	<b>541</b>	<b>559</b>	<b>571</b>	<b>555</b>	<b>533</b>	<b>530</b>
<b>Criminal RALJ</b>													
Previous Pending	107	102	106	107	98	98	108	113	120	129	132	132	129
New Filing (+)	16	11	6	1	6	17	14	19	19	7	10	9	13
Resolved (-)	19	7	7	10	9	11	10	13	11	6	12	14	12
<b>End Pending</b>	<b>102</b>	<b>106</b>	<b>107</b>	<b>98</b>	<b>98</b>	<b>108</b>	<b>113</b>	<b>120</b>	<b>129</b>	<b>132</b>	<b>132</b>	<b>129</b>	<b>131</b>
<b>Total Pending Caseload</b>													
SEA (%)	60%	59%	59%	58%	58%	57%	58%	58%	58%	58%	56%	56%	57%
KNT (%)	40%	41%	41%	42%	42%	43%	42%	42%	42%	42%	44%	44%	43%

(\*) Information from filing to the reporting time is used to determine crime category for pending cases. The category for a case in this table is the highest crime category since filing. For example, a case initially charged with homicide is reported as a homicide regardless of whether or not the charge is reduced since filing. On the other hand, if the charge for a case is upgraded later, then the reporting category in later reports will reflect the upgraded (higher) crime category.

Reflects all documents received by 11/15/2017. Drug court cases are identified by docket code "ORPAR" (Order for Participation).

Table 6. Age of Pending Criminal Cases  
King County Superior Court

Crime Category (*)	Oct 2016	Nov 2016	Dec 2016	Jan 2017	Feb 2017	Mar 2017	Apr 2017	May 2017	Jun 2017	Jul 2017	Aug 2017	Sep 2017	Oct 2017
<b>Total</b>													
<b>Age (days)</b>													
Median (50 <sup>th</sup> percentile)	109	112	115	117	124	117	116	109	107	112	114	118	114
95 <sup>th</sup> percentile	550	562	572	572	583	575	563	557	549	558	557	573	565
<b># of Cases in Age Interval</b>													
0 - 60 days (0 - 2 months)	959	995	981	962	902	1016	1047	1039	1104	1011	1001	907	1041
61-120 days (3 - 4 months)	744	699	725	740	672	608	630	710	730	798	780	767	708
121-180 days (5 - 6 months)	429	455	522	495	476	498	444	400	424	469	530	528	532
181-270 days (7 - 9 months)	413	437	407	448	465	448	465	448	425	406	392	426	420
> 270 days (> 9 months)	600	609	665	656	667	654	682	681	688	741	714	702	680
<b>Homicide</b>													
<b>Age (days)</b>													
Median (50 <sup>th</sup> percentile)	225	244	235	254	252	262	280	304	328	303	317	297	272
95 <sup>th</sup> percentile	753	731	773	804	821	835	840	871	901	819	777	804	790
<b># of Cases in Age Interval</b>													
0 - 60 days (0 - 2 months)	10	8	8	10	7	5	7	7	6	12	11	12	17
61-120 days (3 - 4 months)	12	9	9	8	7	10	7	3	7	6	7	11	9
121-180 days (5 - 6 months)	6	8	12	7	8	8	6	8	5	3	6	6	8
181-270 days (7 - 9 months)	10	11	10	14	14	15	14	11	11	9	8	6	7
> 270 days (> 9 months)	32	29	31	32	34	34	40	40	41	42	41	40	36
<b>Sex Crime</b>													
<b>Age (days)</b>													
Median (50 <sup>th</sup> percentile)	150	152	163	175	183	189	196	188	155	166	157	158	170
95 <sup>th</sup> percentile	462	490	524	540	488	514	544	560	579	606	583	566	545
<b># of Cases in Age Interval</b>													
0 - 60 days (0 - 2 months)	64	57	54	42	45	51	56	69	72	56	53	50	56
61-120 days (3 - 4 months)	67	55	56	56	39	31	39	45	51	67	60	45	38
121-180 days (5 - 6 months)	51	49	57	40	50	45	31	25	33	39	47	58	56
181-270 days (7 - 9 months)	60	70	57	64	60	57	61	51	43	32	35	43	50
> 270 days (> 9 months)	57	59	75	71	77	77	89	92	94	105	94	84	74
<b>Robbery</b>													
<b>Age (days)</b>													
Median (50 <sup>th</sup> percentile)	77	79	80	80	63	50	63	79	64	83	78	88	91
95 <sup>th</sup> percentile	271	265	293	327	355	312	277	265	256	287	317	310	331
<b># of Cases in Age Interval</b>													
0 - 60 days (0 - 2 months)	30	25	35	28	31	44	39	25	36	36	33	22	24
61-120 days (3 - 4 months)	21	21	18	14	15	15	20	32	24	24	22	25	20
121-180 days (5 - 6 months)	10	8	14	10	9	7	7	9	13	18	16	9	10
181-270 days (7 - 9 months)	8	10	5	8	6	6	9	5	7	6	7	8	9
> 270 days (> 9 months)	4	3	8	8	7	5	4	3	3	6	7	6	7
<b>Aggravated Assault</b>													
<b>Age (days)</b>													
Median (50 <sup>th</sup> percentile)	83	77	80	89	90	81	83	79	74	84	87	88	85
95 <sup>th</sup> percentile	379	351	347	355	370	343	346	357	334	364	344	368	357
<b># of Cases in Age Interval</b>													
0 - 60 days (0 - 2 months)	199	221	209	207	201	207	213	239	261	225	239	238	256
61-120 days (3 - 4 months)	133	122	148	157	126	113	114	122	137	180	170	173	171
121-180 days (5 - 6 months)	71	76	80	74	86	90	71	78	74	63	99	111	106
181-270 days (7 - 9 months)	56	58	64	57	58	60	70	73	70	70	69	67	76
> 270 days (> 9 months)	50	51	50	53	57	46	50	51	56	69	68	69	66
<b>Burglary/Theft/Larceny</b>													
<b>Age (days)</b>													
Median (50 <sup>th</sup> percentile)	91	91	91	91	91	83	83	87	93	97	99	107	100
95 <sup>th</sup> percentile	403	374	383	381	408	413	411	417	424	455	458	492	469
<b># of Cases in Age Interval</b>													
0 - 60 days (0 - 2 months)	262	288	301	308	294	333	335	301	303	274	281	235	295
121-180 days (5 - 6 months)	205	187	206	194	199	191	194	231	223	226	206	211	192
61-120 days (3 - 4 months)	108	126	129	139	116	116	120	111	123	145	150	141	139
181-270 days (7 - 9 months)	95	95	101	107	112	101	92	100	99	105	108	114	97
> 270 days (> 9 months)	93	93	93	98	95	97	110	110	105	105	104	109	114

(\*) The highest crime category since filing is used to classify cases. For example, a case initially charged with homicide is reported as a homicide regardless of whether or not the charge is reduced since filing. On the other hand, if the charge for a case is upgraded later, then the reporting category in later reports will reflect the upgraded (higher) crime category.

Reflects all documents received by 11/15/2017.

(1) "Controlled Substance - Non Drug Court" are drug related cases that have never been accepted into drug court.

(2) "Controlled Substance - Drug Court" are drug related cases that have been formally accepted into drug court (identified by "Order of Participation").

Table 6 (cont.). Age of Pending Criminal Cases  
King County Superior Court

Crime Category (*)	Oct 2016	Nov 2016	Dec 2016	Jan 2017	Feb 2017	Mar 2017	Apr 2017	May 2017	Jun 2017	Jul 2017	Aug 2017	Sep 2017	Oct 2017
<b>Motor Vehicle Theft</b>													
<b>Age (days)</b>													
Median (50 <sup>th</sup> percentile)	61	67	73	84	88	63	81	83	75	74	80	97	93
95 <sup>th</sup> percentile	347	377	408	414	285	306	336	367	390	284	291	303	334
<b># of Cases in Age Interval</b>													
0 - 60 days (0 - 2 months)	31	35	26	25	24	34	32	32	30	35	29	21	25
61-120 days (3 - 4 months)	13	18	20	23	19	14	23	22	16	12	22	24	23
121-180 days (5 - 6 months)	10	9	7	9	10	14	11	8	12	13	17	10	9
181-270 days (7 - 9 months)	6	5	7	6	6	2	7	10	6	7	7	11	13
> 270 days (> 9 months)	6	7	7	6	5	6	6	6	4	4	7	5	6
<b>Controlled Substance - Non Drug Court<sup>(1)</sup></b>													
<b>Age (days)</b>													
Median (50 <sup>th</sup> percentile)	77	84	99	85	92	89	98	91	88	88	85	92	83
95 <sup>th</sup> percentile	429	431	465	455	451	406	393	408	409	383	388	402	379
<b># of Cases in Age Interval</b>													
0 - 60 days (0 - 2 months)	169	154	140	163	153	156	137	156	183	163	168	161	18
61-120 days (3 - 4 months)	114	124	111	109	111	109	117	104	87	110	125	118	115
121-180 days (5 - 6 months)	49	56	78	87	75	79	75	67	67	68	51	59	70
181-270 days (7 - 9 months)	42	34	30	40	52	54	59	63	60	61	51	50	40
> 270 days (> 9 months)	42	45	47	42	40	36	39	48	47	55	50	54	54
<b>Drug Court<sup>(2)</sup></b>													
<b>Age (days)</b>													
Median (50 <sup>th</sup> percentile)	411	413	414	411	424	408	421	415	418	417	412	424	419
95 <sup>th</sup> percentile	918	948	937	968	996	1014	1043	994	975	979	1010	1040	1036
<b># of Cases in Age Interval</b>													
0 - 60 days (0 - 2 months)	0	2	1	1	0	2	0	0	0	1	0	1	1
61-120 days (3 - 4 months)	8	11	6	7	4	7	8	11	6	5	9	6	4
121-180 days (5 - 6 months)	16	15	23	18	13	16	13	13	20	16	12	14	17
181-270 days (7 - 9 months)	49	52	39	43	41	47	44	32	34	33	33	34	35
> 270 days (> 9 months)	230	234	252	244	238	236	228	209	214	216	208	207	199
<b>Other</b>													
<b>Age (days)</b>													
Median (50 <sup>th</sup> percentile)	89	101	100	106	119	116	110	98	100	105	108	114	106
95 <sup>th</sup> percentile	336	322	346	357	372	392	406	434	458	464	463	493	454
<b># of Cases in Age Interval</b>													
0 - 60 days (0 - 2 months)	176	179	190	172	140	161	197	183	177	183	170	161	170
61-120 days (3 - 4 months)	160	144	135	148	136	112	101	117	148	136	124	130	120
121-180 days (5 - 6 months)	92	92	111	102	95	98	94	75	70	82	103	90	83
181-270 days (7 - 9 months)	69	86	74	90	96	94	88	83	78	72	63	74	67
> 270 days (> 9 months)	47	48	59	62	75	75	78	83	86	98	95	91	90
<b>Criminal RALJ</b>													
<b>Age (days)</b>													
Median (50 <sup>th</sup> percentile)	216	195	208	227	237	183	188	174	115	139	151	163	166
95 <sup>th</sup> percentile	687	717	639	670	698	694	661	690	718	749	601	810	841
<b># of Cases in Age Interval</b>													
0 - 60 days (0 - 2 months)	18	26	17	6	7	23	31	32	36	26	17	19	21
61-120 days (3 - 4 months)	11	8	16	24	16	6	7	23	31	32	35	24	16
121-180 days (5 - 6 months)	16	16	11	9	16	25	16	6	7	22	29	30	34
181-270 days (7 - 9 months)	18	16	20	19	20	12	21	20	17	11	11	19	26
> 270 days (> 9 months)	39	40	43	40	39	42	38	39	38	41	40	37	34

(\*) The highest crime category since filing is used to classify cases. For example, a case initially charged with homicide is reported as a homicide regardless of whether or not the charge is reduced since filing. On the other hand, if the charge for a case is upgraded later, then the reporting category in later reports will reflect the upgraded (higher) crime category.

Reflects all documents received by 11/15/2017.

(1) "Controlled Substance - Non Drug Court" are drug related cases that have never been accepted into drug court.

(2) "Controlled Substance - Drug Court" are drug related cases that have been formally accepted into drug court (identified by "Order of Participation").

Table 7. Comparison between SEA/KNT: Filings, Resolutions, and Pending Caseload  
King County Superior Court

	Nov 2016	Dec 2016	Jan 2017	Feb 2017	Mar 2017	Apr 2017	May 2017	Jun 2017	Jul 2017	Aug 2017	Sep 2017	Oct 2017 <sup>(1)</sup>
<b>Total Filings</b>												
SEA - # of Cases Filed	283	304	268	273	349	337	318	349	303	316	264	339
KNT - # of Cases Filed	245	238	247	213	280	245	265	242	203	277	246	261
SEA %	54%	56%	52%	56%	55%	58%	55%	59%	60%	53%	52%	56%
KNT %	46%	44%	48%	44%	45%	42%	45%	41%	40%	47%	48%	44%
<b>Total Resolutions</b>												
SEA - # of Cases Resolved	270	277	257	293	319	241	293	294	242	338	289	322
KNT - # of Cases Resolved	191	185	192	193	249	202	233	233	176	230	215	261
SEA - Drug Court Cases Resolved	13	13	16	13	26	11	30	15	15	15	17	25
KNT - Drug Court Cases Resolved	3	5	15	10	2	7	9	4	1	6	8	6
SEA %	57%	58%	54%	58%	54%	52%	52%	54%	56%	57%	55%	52%
KNT %	40%	39%	40%	39%	42%	44%	41%	43%	41%	39%	41%	43%
SEA - Drug Court %	3%	3%	3%	3%	4%	2%	5%	3%	3%	3%	3%	4%
KNT - Drug Court %	1%	1%	3%	2%	0%	2%	2%	1%	0%	1%	2%	1%
<b>Total Pending</b>												
SEA - # of Cases Pending	1672	1714	1675	1628	1630	1686	1695	1758	1800	1729	1683	1736
KNT - # of Cases Pending	1209	1265	1313	1258	1286	1289	1318	1339	1354	1426	1385	1389
SEA - Drug Court Cases Pending	226	234	232	221	222	217	195	196	186	184	184	182
KNT - Drug Court Cases Pending	88	87	81	75	86	76	70	78	85	78	78	74
SEA %	52%	52%	51%	51%	51%	52%	52%	52%	53%	51%	51%	51%
KNT %	38%	38%	40%	40%	40%	39%	40%	40%	40%	42%	42%	41%
SEA - Drug Court %	7%	7%	7%	7%	7%	7%	6%	6%	5%	5%	6%	5%
KNT - Drug Court %	3%	3%	3%	2%	3%	2%	2%	2%	2%	2%	2%	2%

(1) Reflects all documents received by 11/15/2017.

(2) The number of judges does not include RJC chief judge and the criminal chief judge at SEA.

Table 8. Drug Court Statistics

King County Superior Court

Categories	Sep 2016	Oct 2016	Nov 2016	Dec 2016	Jan 2017	Feb 2017	Mar 2017	Apr 2017	May 2017	Jun 2017	Jul 2017	Aug 2017	Sep 2017	Oct 2017
Referrals - Total	45	42	36	37	35	38	33	38	47	46	47	66	35	52
Directly from PA	29	14	19	27	19	25	18	19	24	23	25	32	19	30
From Mainstream	16	28	17	10	16	13	25	19	23	23	22	34	16	22
Arraignments in Drug Court <sup>(1)</sup>	27	23	13	19	19	18	19	18	23	22	16	16	28	15
GP in Drug Court <sup>(2)</sup>	0	1	0	2	0	0	0	1	1	0	1	5	0	4
Return to mainstream <sup>(3)</sup>	24	13	19	22	21	18	12	22	11	18	16	36	20	13
Opt-in <sup>(4)</sup>	13	16	22	19	23	14	29	12	17	21	16	26	17	20
Graduations <sup>(5)</sup>	22	6	11	5	24	12	8	8	29	16	4	17	12	19
Terminations <sup>(6)</sup>	9	12	5	13	7	11	20	10	10	3	12	4	13	12

- (1) Arraignments held in drug court regardless opt-in status of the cases.
- (2) Guilty pleas entered in drug court before opt-in.
- (3) Referred to drug court but decision by court order to go to mainstream.
- (4) Opt-in reflects the court order of participation.
- (5) Graduations are dismissals of opted-in cases after the completion of program.
- (6) Terminations are cases that fail in drug court.