

King County Superior Court
Criminal Department Statistical Report

February 2018

Department of Judicial Administration
Prepared by: Shiquan Liao, Ph.D., Statistician

Release date: March 20, 2018

Report #: CRM-2018-02

Terminology

Age of Pending Case

Time (days) from filing to resolution, less suspense time if applicable.

Age of Resolved Case

Time (days) from filing to resolution, less suspense time if applicable.

End Pending

Number of pending cases at the end of reporting period.

Net Change in Pending

The change in number of pending cases (end pending minus previous pending).

Pending Case

A case is defined as pending if it is unresolved and not on suspense status.

Previous Pending

Number of pending cases at the beginning of reporting period.

Reactivated Case

A case returns to active from suspense status during the reporting period.

Resolution

A case is resolved if all issues in the complaint are fully adjudicated. However, a drug court case is reported as resolved only when dispositive document is also filed (completed).

Resolution Category

Five resolution categories are used to report resolution of criminal cases: jury trial (CVJV, AQJV), non-jury trial (CVCT, AQCT), guilty plea (GP, GPAT, GPJT), dismissal (DSM), and other (all other resolution codes). For criminal RALJ cases, the resolution categories are: RALJ decision (CDTA, CDTM, CDTR), dismissal (DSRM), and others (any other resolution codes).

Suspended Case

A case is placed in suspense status (removing from active) during the reporting period.

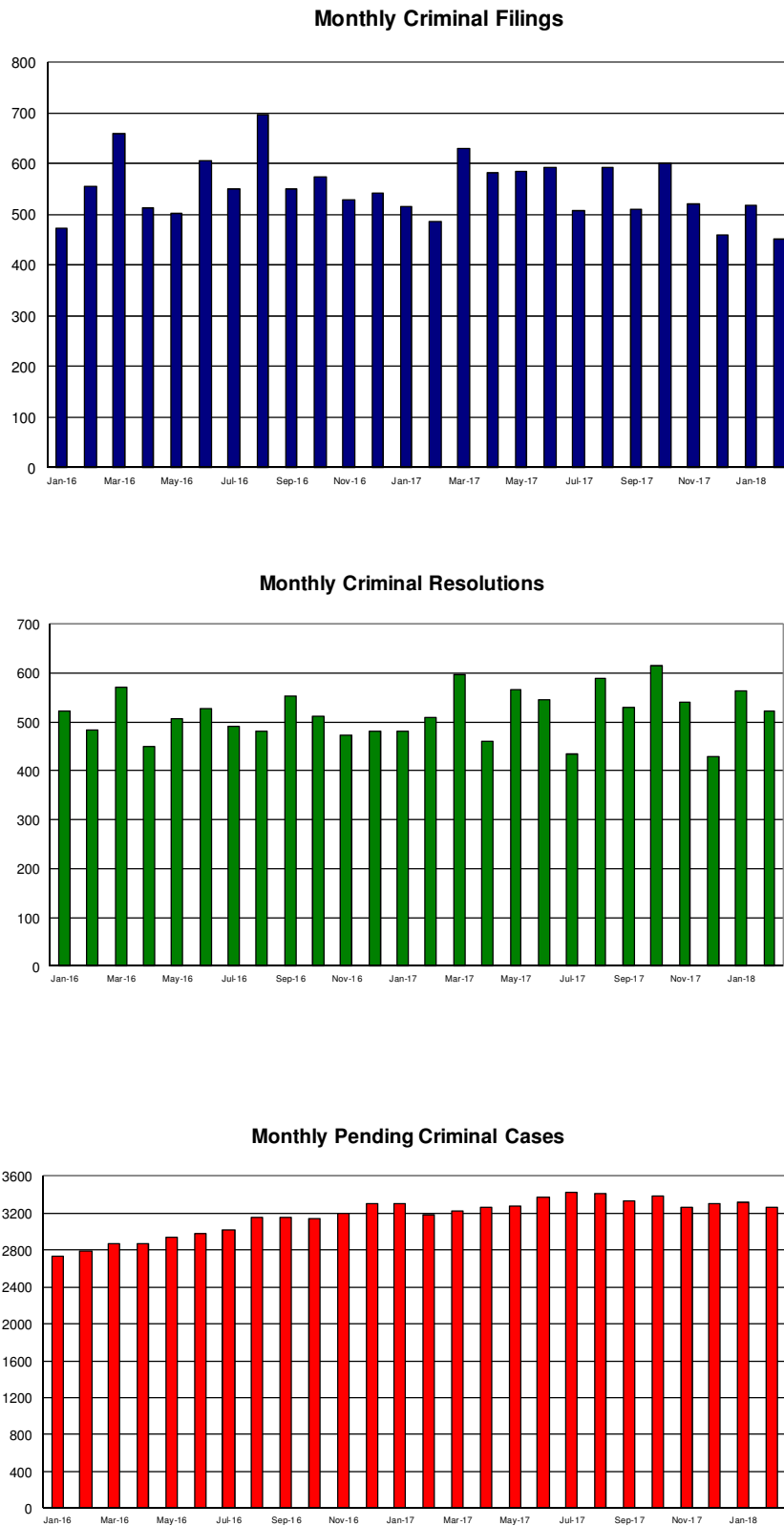
Suspense Status

A case is said to be on suspense status if it is on warrant or appeal.

Suspense Time

Time (days) a case is on suspense status.

Figure 1. Number of Criminal Filings, Resolutions and Pending Caseload by Month



Note: Starting January 2010, RALJ cases are included.

Figure 2. Crime Category as a Percentage of Total Filings by Year

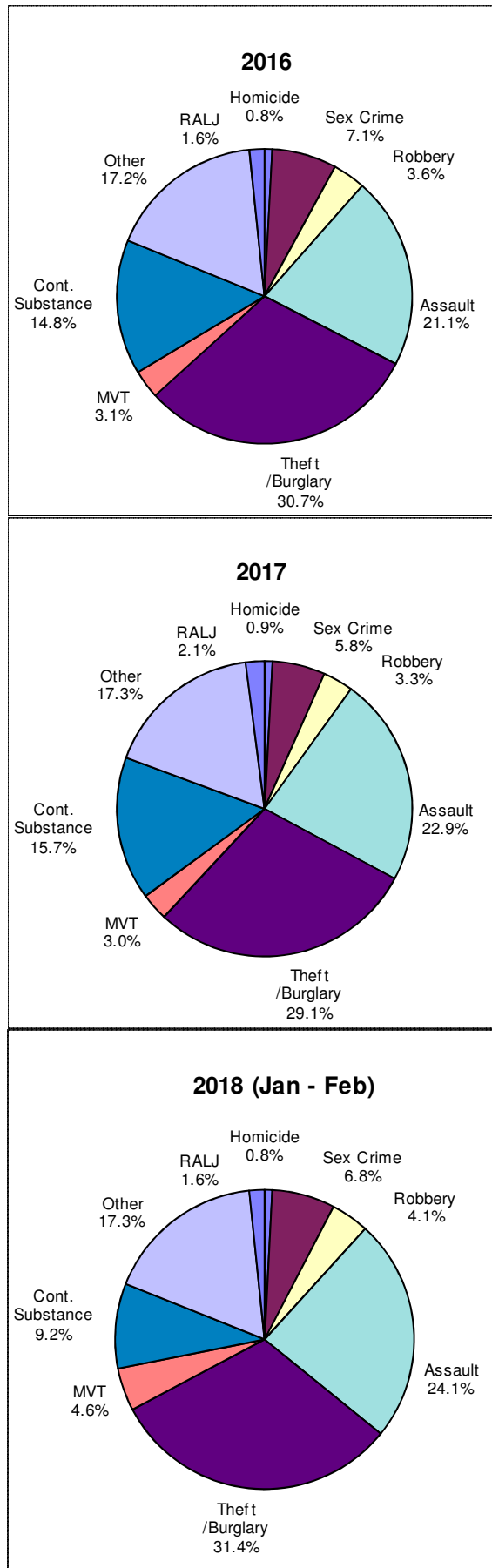


Table 1. Monthly Criminal New Filings by Crime Category (*)
King County Superior Court

	Jan	Feb	Mar	Apr	May	Jun	Jul	Aug	Sep	Oct	Nov	Dec	ADJ ⁽¹⁾	Annual
Total														
2015	525	544	647	590	582	590	458	518	525	531	413	491	(+4)	6418
2016	473	556	658	512	501	605	549	695	550	573	528	542	(+1)	6743
2017	515	486	629	582	583	591	506	593	510	600	520	460	(+2)	6577
2018 ⁽²⁾	519	452												
Homicide														
2015	4	0	3	5	0	6	3	6	2	4	4	6	(+4)	47
2016	2	3	7	6	4	4	7	4	4	5	4	5	(+1)	56
2017	7	2	1	5	2	7	3	9	5	5	6	5	(0)	57
2018 ⁽²⁾	6	2												
Sex Crime														
2015	37	46	42	38	52	37	32	49	40	38	23	42	(+2)	478
2016	39	46	53	40	60	36	42	40	24	37	32	24	(+5)	478
2017	15	27	24	44	55	24	27	46	27	32	22	37	(+1)	381
2018 ⁽²⁾	36	30												
Robbery														
2015	20	10	20	18	18	18	10	8	12	20	11	18	(+17)	200
2016	14	18	16	19	24	22	22	22	22	13	12	19	(+19)	242
2017	16	22	28	17	23	18	20	14	14	15	16	15	(+20)	238
2018 ⁽²⁾	25	15												
Aggravated Assault														
2015	107	105	99	115	117	99	120	130	111	107	83	100	(+30)	1323
2016	99	124	116	102	115	123	120	139	109	140	90	110	(+35)	1422
2017	115	105	146	125	128	136	117	148	132	143	112	98	(+41)	1546
2018 ⁽²⁾	117	117												
Burglary/Theft /Larceny														
2015	144	159	243	185	165	177	119	125	136	139	137	140	(+34)	1903
2016	137	162	241	148	139	174	160	184	171	156	186	180	(+30)	2068
2017	173	164	190	167	166	160	140	142	139	170	155	146	(-4)	1916
2018 ⁽²⁾	157	148												
Motor Vehicle Theft														
2015	22	26	34	21	23	21	12	20	16	19	8	16	(-9)	229
2016	15	18	22	20	17	19	18	26	15	18	23	10	(-10)	211
2017	16	11	18	22	11	21	12	20	13	19	16	18	(-5)	192
2018 ⁽²⁾	21	24												
Controlled Substance														
2015	77	91	90	110	104	115	62	63	94	79	67	66	(+1)	1019
2016	67	81	92	71	40	91	82	133	95	80	74	93	(-2)	997
2017	79	80	91	79	92	99	79	109	80	109	90	45	(+2)	1034
2018 ⁽²⁾	47	42												
Other														
2015	111	93	99	84	83	100	80	94	102	113	65	90	(-75)	1039
2016	88	93	94	98	90	123	92	142	107	108	96	95	(-77)	1158
2017	93	69	114	109	87	107	101	95	91	94	93	85	(-61)	1077
2018 ⁽²⁾	99	69												
Criminal RALJ														
2015	3	14	17	14	20	17	20	23	12	12	15	13	(0)	180
2016	12	11	17	8	3	13	6	5	3	16	11	6	(0)	111
2017	1	6	17	14	19	19	7	10	9	13	10	11	(+2)	136
2018 ⁽²⁾	11	5												
KNT Filing as % of Total														
2015	46%	47%	48%	42%	44%	44%	42%	49%	44%	45%	44%	42%		45%
2016	40%	41%	45%	40%	47%	43%	39%	46%	46%	45%	46%	44%		44%
2017	48%	44%	45%	42%	46%	41%	40%	47%	48%	44%	46%	44%		44%
2018 ⁽²⁾	44%	44%												

(*) The highest crime category in a case's history is used to classify cases. For example, a case charged with homicide at any time in the case's history is reported as a homicide regardless of whether the charge is reduced at resolution.

(1) "ADJ" = year-end adjustment.

(2) Reflects all documents received by 03/15/2018.

Table 2. Monthly Criminal Case Resolutions by Crime Category
King County Superior Court

	Jan	Feb	Mar	Apr	May	Jun	Jul	Aug	Sep	Oct	Nov	Dec	ADJ ⁽¹⁾	Annual
Total														
2015	547	445	560	680	529	578	567	526	583	546	516	505	(+7)	6589
2016	522	484	571	449	507	527	491	482	553	513	472	480	(+26)	6077
2017	480	509	596	461	565	546	434	589	529	614	541	429	(+26)	6295
2018 ⁽²⁾	562	523												
Homicide														
2015	3	2	5	7	5	6	4	5	2	3	6	4	(0)	52
2016	1	3	7	1	5	3	7	5	4	7	5	2	(0)	50
2017	3	4	2	4	6	2	4	4	4	6	6	1	(+2)	48
2018 ⁽²⁾	6	5												
Sex Crime														
2015	28	29	36	42	42	33	46	36	36	38	39	40	(+1)	446
2016	51	31	51	34	40	33	38	44	33	30	34	32	(+4)	455
2017	37	34	37	18	37	31	23	36	34	35	34	32	(+1)	389
2018 ⁽²⁾	39	31												
Robbery														
2015	15	14	19	13	18	27	23	19	14	11	25	20	(+1)	219
2016	12	20	11	8	22	21	29	17	22	25	29	16	(0)	232
2017	22	24	28	20	20	20	13	25	23	26	17	17	(0)	255
2018 ⁽²⁾	13	21												
Aggravated Assault														
2015	126	96	118	136	124	106	110	83	128	136	113	104	(+3)	1383
2016	102	79	135	118	122	105	113	110	121	99	101	107	(+12)	1324
2017	116	104	147	108	105	111	108	108	118	137	141	107	(+2)	1412
2018 ⁽²⁾	146	116												
Burglary/Theft /Larceny														
2015	138	122	176	224	141	189	165	181	168	155	144	169	(-3)	1969
2016	122	144	158	135	127	160	145	146	170	148	134	146	(0)	1735
2017	127	157	158	128	171	180	121	171	129	169	150	104	(-3)	1762
2018 ⁽²⁾	143	151												
Motor Vehicle Theft														
2015	13	21	14	20	19	24	13	16	29	17	22	14	(0)	222
2016	12	23	9	17	10	21	9	19	20	15	17	17	(0)	189
2017	14	18	13	10	18	14	10	12	18	14	15	15	(0)	171
2018 ⁽²⁾	12	11												
Controlled Substance - Non Drug Court														
2015	85	64	78	116	68	76	93	75	69	59	73	64	(0)	920
2016	85	63	80	54	68	71	53	54	62	68	59	72	(+1)	790
2017	51	65	71	66	71	82	57	100	76	90	58	62	(+2)	846
2018 ⁽²⁾	79	99												
Drug Court														
2015	30	14	16	13	18	17	15	21	13	21	15	3	(+4)	200
2016	39	17	18	14	27	7	19	15	31	18	16	18	(+5)	244
2017	31	23	28	18	39	19	16	21	25	31	31	17	(-1)	301
2018 ⁽²⁾	33	11												
Other														
2015	90	71	84	91	78	79	86	79	108	91	74	72	(+2)	1005
2016	78	94	84	55	75	91	63	61	76	84	70	63	(+5)	899
2017	69	71	101	79	85	76	76	100	88	94	78	64	(-1)	983
2018 ⁽²⁾	81	58												
Criminal RALJ														
2015	19	12	14	18	16	21	12	11	16	15	5	15	(-1)	173
2016	20	10	18	13	11	15	15	11	14	19	7	7	(-1)	159
2017	10	9	11	10	13	11	6	12	14	12	11	10	(+2)	128
2018 ⁽²⁾	11	20												
KNT as % of Total														
2015	46%	46%	52%	55%	50%	52%	43%	47%	45%	46%	48%	46%		47%
2016	39%	41%	48%	51%	46%	42%	40%	43%	45%	46%	41%	40%		43%
2017	43%	40%	42%	45%	43%	43%	41%	40%	42%	44%	47%	44%		43%
2018 ⁽²⁾	43%	35%												

The highest crime category in a case's history is used to classify cases. For example, a case charged with homicide at any time in the case's history is reported as a homicide regardless of whether the charge is reduced at resolution.

- (1) "ADJ" = year-end adjustment.
- (2) Reflects all documents received by 03/15/2018.
- (3) "Controlled Substance - Non Drug Court" are drug related cases that have never been accepted into drug court.
- (4) "Controlled Substance - Drug Court" are drug related cases that have been formally accepted into drug court (identified by "Order of Participation").

Table 3. Number of Cases Resolved and Resolution Category
King County Superior Court

Crime Category ^(*)	Mar 2017	Apr 2017	May 2017	Jun 2017	Jul 2017	Aug 2017	Sep 2017	Oct 2017	Nov 2017	Dec 2017	Jan 2018	Feb 2018
Homicide	2	4	6	2	4	4	4	6	6	1	6	5
Resolved by Jury Trial	1	0	1	1	1	1	0	2	1	0	2	0
Resolved by Non-Jury Trial	0	1	0	0	0	0	0	0	0	0	0	0
Resolved by Guilty Plea	1	2	5	1	3	3	4	4	5	1	4	5
Dismissal	0	0	0	0	0	0	0	0	0	0	0	0
Others	0	1	0	0	0	0	0	0	0	0	0	0
Sex Crime	37	18	37	31	23	36	34	35	34	32	39	31
Resolved by Jury Trial	3	3	2	5	0	4	2	2	3	1	1	1
Resolved by Non-Jury Trial	0	0	0	0	0	0	0	0	0	0	1	0
Resolved by Guilty Plea	32	11	33	24	21	28	24	29	26	28	36	27
Dismissal	2	4	2	2	2	4	8	4	5	3	1	3
Others	0	0	0	0	0	0	0	0	0	0	0	0
Robbery	28	20	20	20	13	25	23	26	17	17	13	21
Resolved by Jury Trial	0	0	2	1	2	1	0	0	0	0	1	0
Resolved by Non-Jury Trial	0	0	0	0	0	0	0	0	0	0	0	0
Resolved by Guilty Plea	26	18	14	19	11	23	23	25	15	15	10	19
Dismissal	2	2	4	0	0	1	0	1	2	2	2	2
Others	0	0	0	0	0	0	0	0	0	0	0	0
Aggravated Assault	147	108	105	111	108	108	118	137	141	107	146	116
Resolved by Jury Trial	0	4	5	8	7	7	10	7	5	10	1	5
Resolved by Non-Jury Trial	124	0	0	0	1	0	0	0	0	0	0	0
Resolved by Guilty Plea	16	84	86	84	84	89	91	116	117	81	112	87
Dismissal	0	20	14	19	17	12	16	13	18	16	33	24
Others	0	0	0	0	0	0	1	1	1	0	0	0
Burglary/Theft/Larceny	158	128	171	180	121	171	129	169	150	104	143	151
Resolved by Jury Trial	5	1	2	1	2	3	0	5	3	3	1	1
Resolved by Non-Jury Trial	0	0	0	1	0	0	1	0	0	1	0	1
Resolved by Guilty Plea	136	116	155	164	107	159	113	152	130	90	131	130
Dismissal	17	11	14	14	12	9	15	12	17	10	11	19
Others	0	0	0	0	0	0	0	0	0	0	0	0
Motor Vehicle Theft	13	10	18	14	10	12	18	14	15	15	12	11
Resolved by Jury Trial	0	0	0	0	0	0	0	0	0	0	0	0
Resolved by Non-Jury Trial	0	0	0	0	0	0	0	0	0	0	0	0
Resolved by Guilty Plea	8	8	17	12	10	12	16	13	11	13	12	10
Dismissal	5	2	1	2	0	0	2	1	4	2	0	1
Others	0	0	0	0	0	0	0	0	0	0	0	0
Controlled Substance - Non Drug Court⁽¹⁾	71	66	71	82	57	100	76	90	58	62	79	99
Resolved by Jury Trial	0	1	0	2	0	0	1	0	0	0	0	3
Resolved by Non-Jury Trial	0	0	0	0	0	2	1	0	0	0	0	0
Resolved by Guilty Plea	60	49	55	67	43	82	59	74	44	48	62	80
Dismissal	11	16	16	13	14	16	15	16	13	14	17	15
Others	0	0	0	0	0	0	0	0	1	0	0	1
Drug Court⁽²⁾	28	18	39	19	16	21	25	31	31	17	33	11
Resolved by Non-Jury Trial	0	1	1	1	4	1	7	5	1	1	6	3
Resolved by Guilty Plea	2	9	9	1	8	3	6	7	7	8	11	2
Dismissal	18	8	29	16	4	17	12	19	23	8	16	6
Others	8	0	0	0	0	0	0	0	0	0	0	0
Other	101	79	85	76	76	100	88	94	78	64	81	58
Resolved by Jury Trial	6	1	3	3	6	1	3	2	2	5	3	1
Resolved by Non-Jury Trial	0	2	0	0	0	0	0	0	0	1	0	0
Resolved by Guilty Plea	71	51	62	47	47	74	62	65	51	41	49	41
Dismissal	17	15	14	18	16	20	17	23	21	14	19	13
Others	7	10	6	8	7	5	6	4	4	3	10	3
Criminal RALJ	11	10	13	11	6	12	14	1	11	10	11	20
RALJ Decision	9	9	7	8	2	6	9	9	6	7	5	16
Dismissal	2	1	3	2	4	6	5	3	5	2	6	2
Others	0	0	3	1	0	0	0	0	0	1	0	2

(*) The highest crime category in a case's history is used to classify cases.

Reflects all documents received by **03/15/2018**.

(1) "Controlled Substance - Non Drug Court" are drug related cases that have never been accepted into drug court.

(2) "Controlled Substance - Drug Court" are drug related cases that have been formally accepted into drug court (identified by "Order of Participation").

(3) DV Subset includes cases with a DV flag in at least one of the charges within the specific crime category at the time of the reporting.

Table 4. Age (days) of Resolved Cases
King County Superior Court

Crime Category (*)	Mar 2017	Apr 2017	May 2017	Jun 2017	Jul 2017	Aug 2017	Sep 2017	Oct 2017	Nov 2017	Dec 2017	Jan 2018	Feb 2018
Homicide (**)												
50% Cases Resolved by Day	563	330	334	497	601	396	421	486	182	452	399	574
90% Cases Resolved by Day	823	3997	856	839	913	941	1076	909	783	452	1132	805
Average Time (days)	563	1179	365	497	654	484	501	489	334	452	442	439
Sex Crime												
50% Cases Resolved by Day	218	202	232	233	229	299	269	196	192	211	267	238
90% Cases Resolved by Day	428	490	488	454	526	622	681	469	517	530	580	388
Average Time (days)	234	232	245	234	260	316	318	252	229	237	325	300
Robbery												
50% Cases Resolved by Day	120	89	98	114	130	108	139	92	77	127	66	122
90% Cases Resolved by Day	357	512	322	244	294	208	304	203	198	238	176	377
Average Time (days)	166	190	149	132	866	128	164	117	109	131	87	187
Aggravated Assault												
50% Cases Resolved by Day	99	95	113	98	109	104	114	120	94	127	138	116
90% Cases Resolved by Day	306	270	285	271	275	293	304	323	301	270	304	323
Average Time (days)	136	135	144	146	133	149	144	161	143	147	163	151
Burglary/Theft/Larceny												
50% Cases Resolved by Day	120	100	113	102	125	113	118	118	117	158	108	132
90% Cases Resolved by Day	316	358	292	299	312	278	274	284	334	327	333	486
Average Time (days)	148	146	146	142	150	147	140	155	158	170	153	203
Motor Vehicle Theft												
50% Cases Resolved by Day	62	130	101	91	98	94	102	149	68	144	57	104
90% Cases Resolved by Day	211	170	269	221	207	268	237	295	207	273	157	228
Average Time (days)	102	113	113	102	113	127	116	160	107	139	80	128
Controlled Substance												
50% Cases Resolved by Day	133	104	121	128	102	117	125	126	103	120	109	139
90% Cases Resolved by Day	280	310	234	297	273	335	262	300	274	285	324	346
Average Time (days)	162	133	135	149	140	150	138	152	164	189	170	168
Drug Court (2)												
50% Cases Resolved by Day	606	537	615	661	420	665	546	575	618	519	545	575
90% Cases Resolved by Day	1101	847	1052	928	731	834	707	977	966	953	866	732
Average Time (days)	597	573	664	674	427	614	533	620	636	558	585	567
Other												
50% Cases Resolved by Day	126	162	141	128	119	122	109	118	144	114	151	118
90% Cases Resolved by Day	310	298	319	324	328	338	313	336	336	423	428	367
Average Time (days)	251	162	157	262	155	166	149	246	177	315	180	159
Criminal RALJ												
50% Cases Resolved by Day	333	399	214	241	316	338	327	242	365	224	252	304
90% Cases Resolved by Day	463	778	350	457	525	655	629	505	636	692	526	575
Average Time (days)	355	487	289	281	332	374	373	288	418	320	327	368

(*) The highest crime category in a case's history is used to classify cases. For example, a case charged with homicide at any time during the case's history is reported as a homicide regardless of whether the charge is reduced at resolution.

(**) Due to small number of resolutions in this category, the age statistics for homicides are expected to vary considerably.

Reflects all documents received by 03/15/2018.

(1) "Controlled Substance - Non Drug Court" are drug related cases that have never been accepted into drug court.

(2) "Controlled Substance - Drug Court" are drug related cases that have been formally accepted into drug court (identified by "Order of Participation").

(3) DV Subset includes cases with a DV flag in at least one of the charges within the specific crime category at the time of the reporting.

Table 5. Pending Criminal Cases
King County Superior Court

Crime Category (*)	Feb 2017	Mar 2017	Apr 2017	May 2017	Jun 2017	Jul 2017	Aug 2017	Sep 2017	Oct 2017	Nov 2017	Dec 2017	Jan 2018	Feb 2018
Total													
Previous Pending	3301	3182	3224	3268	3278	3371	3425	3417	3330	3381	3264	3304	3324
New Filing (+)	486	629	582	583	591	506	593	510	600	520	460	519	452
Resolved (-)	509	596	461	565	546	434	589	529	614	541	429	563	523
End Pending	3182	3224	3268	3278	3371	3425	3417	3330	3381	3264	3304	3324	3265
Homicide													
Previous Pending	71	70	72	74	69	70	72	73	75	72	73	79	80
New Filing (+)	2	1	5	2	7	3	9	5	5	6	5	6	2
Resolved (-)	4	2	4	6	2	4	4	4	6	6	1	6	5
End Pending	70	72	74	69	70	72	73	75	72	73	79	80	78
Sex Crime													
Previous Pending	273	273	261	276	282	293	299	289	280	274	269	262	256
New Filing (+)	27	24	44	55	24	27	46	27	32	22	37	36	30
Resolved (-)	34	37	18	37	31	23	36	34	35	34	32	39	31
End Pending	271	261	276	282	293	299	289	280	274	269	262	256	253
Robbery													
Previous Pending	68	68	77	79	74	83	90	85	70	70	70	73	86
New Filing (+)	22	28	17	23	18	20	14	14	15	16	15	25	15
Resolved (-)	24	28	20	20	20	13	25	23	26	17	17	13	21
End Pending	68	77	79	74	83	90	85	70	70	70	73	86	81
Aggravated Assault													
Previous Pending	548	528	516	518	563	598	607	645	658	675	641	635	620
New Filing (+)	105	146	125	128	136	117	148	132	143	112	98	117	117
Resolved (-)	104	147	108	105	111	108	108	118	137	141	107	146	116
End Pending	528	516	518	563	598	607	645	658	675	641	635	620	622
Burglary/Theft/Larceny													
Previous Pending	846	816	838	851	853	853	855	849	810	873	812	821	858
New Filing (+)	164	190	167	166	160	140	142	139	170	155	146	157	148
Resolved (-)	157	158	128	171	180	121	171	129	169	150	104	143	151
End Pending	816	838	851	853	853	855	849	810	837	812	821	858	852
Motor Vehicle Theft													
Previous Pending	69	64	70	79	73	68	71	82	71	76	69	74	74
New Filing (+)	11	18	22	11	21	12	20	13	19	16	18	21	24
Resolved (-)	18	13	10	18	14	10	12	18	14	15	15	33	11
End Pending	64	70	79	73	68	71	82	71	76	69	74	74	82
Controlled Substance - Non Drug Court (1)													
Previous Pending	441	429	434	427	438	444	457	445	442	460	453	452	450
Resolved (-)	65	71	66	71	82	57	100	76	90	58	62	79	99
End Pending	429	434	427	438	444	457	445	442	460	453	452	450	394
Drug Court (2)													
Previous Pending	313	296	308	293	265	274	271	262	262	256	235	234	228
New Filing (+)	14	29	12	17	21	16	26	17	20	14	13	18	20
Resolved (-)	23	28	18	39	19	16	21	25	31	31	17	33	11
End Pending	296	308	293	265	274	271	262	262	256	235	234	228	237
Other													
Previous Pending	574	542	540	558	541	559	571	555	533	530	512	542	539
New Filing (+)	69	114	109	87	107	101	95	91	94	93	85	99	69
Resolved (-)	71	101	79	85	76	76	100	88	94	78	64	81	58
End Pending	542	540	558	541	559	571	555	533	530	512	542	539	547
Criminal RALJ													
Previous Pending	98	98	108	113	120	129	132	132	129	131	130	132	133
New Filing (+)	6	17	14	19	19	7	10	9	13	10	11	11	5
Resolved (-)	9	11	10	13	11	6	12	14	12	11	10	11	20
End Pending	98	108	113	120	129	132	132	129	131	130	132	133	119
Total Pending Caseload													
SEA (%)	58%	57%	58%	58%	58%	58%	56%	56%	57%	56%	57%	56%	55%
KNT (%)	42%	43%	42%	42%	42%	42%	44%	44%	43%	44%	43%	44%	45%

(*) Information from filing to the reporting time is used to determine crime category for pending cases. The category for a case in this table is the highest crime category since filing. For example, a case initially charged with homicide is reported as a homicide regardless of whether or not the charge is reduced since filing. On the other hand, if the charge for a case is upgraded later, then the reporting category in later reports will reflect the upgraded (higher) crime category.

Reflects all documents received by 03/15/2018. Drug court cases are identified by docket code "ORPAR" (Order for Participation).

Table 6. Age of Pending Criminal Cases
King County Superior Court

Crime Category (*)	Feb 2017	Mar 2017	Apr 2017	May 2017	Jun 2017	Jul 2017	Aug 2017	Sep 2017	Oct 2017	Nov 2017	Dec 2017	Jan 2018	Feb 2018
Total													
Age (days)													
Median (50 th percentile)	124	117	116	109	107	112	114	118	114	121	123	122	126
95 th percentile	583	575	563	557	549	558	557	573	565	555	556	559	549
# of Cases in Age Interval													
0 - 60 days (0 - 2 months)	902	1016	1047	1039	1104	1011	1001	907	1041	996	866	879	917
61-120 days (3 - 4 months)	672	608	630	710	730	798	780	767	708	636	768	769	667
121-180 days (5 - 6 months)	476	498	444	400	424	469	530	528	532	513	492	480	506
181-270 days (7 - 9 months)	465	448	465	448	425	406	392	426	420	482	503	519	494
> 270 days (> 9 months)	667	654	682	681	688	741	714	702	680	637	675	677	681
Homicide													
Age (days)													
Median (50 th percentile)	252	262	280	304	328	303	317	297	272	273	255	234	249
95 th percentile	821	835	840	871	901	819	777	804	790	820	851	792	834
# of Cases in Age Interval													
0 - 60 days (0 - 2 months)	7	5	7	7	6	12	11	12	17	11	12	13	9
61-120 days (3 - 4 months)	7	10	7	3	7	6	7	11	9	10	10	9	10
121-180 days (5 - 6 months)	8	8	6	8	5	3	6	6	8	10	9	10	10
181-270 days (7 - 9 months)	14	15	14	11	11	9	8	6	7	5	11	11	14
> 270 days (> 9 months)	34	34	40	40	41	42	41	40	36	37	37	37	35
Sex Crime													
Age (days)													
Median (50 th percentile)	183	189	196	188	155	166	157	158	170	197	200	185	175
95 th percentile	488	514	544	560	579	606	583	566	545	561	551	559	580
# of Cases in Age Interval													
0 - 60 days (0 - 2 months)	45	51	56	69	72	56	53	50	56	55	46	51	55
61-120 days (3 - 4 months)	39	31	39	45	51	67	60	45	38	35	40	47	39
121-180 days (5 - 6 months)	50	45	31	25	33	39	47	58	56	38	32	26	34
181-270 days (7 - 9 months)	60	57	61	51	43	32	35	43	50	64	66	53	34
> 270 days (> 9 months)	77	77	89	92	94	105	94	84	74	77	78	79	91
Robbery													
Age (days)													
Median (50 th percentile)	63	50	63	79	64	83	78	88	91	107	88	88	73
95 th percentile	355	312	277	265	256	287	317	310	331	344	375	371	307
# of Cases in Age Interval													
0 - 60 days (0 - 2 months)	31	44	39	25	36	36	33	22	24	25	27	35	35
61-120 days (3 - 4 months)	15	15	20	32	24	24	22	25	20	14	18	20	18
121-180 days (5 - 6 months)	9	7	7	9	13	18	16	9	10	16	13	10	9
181-270 days (7 - 9 months)	6	6	9	5	7	6	7	8	9	10	7	11	14
> 270 days (> 9 months)	7	5	4	3	3	6	7	6	7	5	8	10	5
Aggravated Assault													
Age (days)													
Median (50 th percentile)	90	81	83	79	74	84	87	88	85	94	104	100	105
95 th percentile	370	343	346	357	334	364	344	368	357	342	368	373	348
# of Cases in Age Interval													
0 - 60 days (0 - 2 months)	201	207	213	239	261	225	239	238	256	229	184	195	218
61-120 days (3 - 4 months)	126	113	114	122	137	180	170	173	171	151	176	168	133
121-180 days (5 - 6 months)	86	90	71	78	74	63	99	111	106	118	110	93	108
181-270 days (7 - 9 months)	58	60	70	73	70	70	69	67	76	86	100	95	90
> 270 days (> 9 months)	57	46	50	51	56	69	68	69	66	57	65	69	73
Burglary/Theft/Larceny													
Age (days)													
Median (50 th percentile)	91	83	83	87	93	97	99	107	100	101	100	105	104
95 th percentile	408	413	411	417	424	455	458	492	469	436	441	426	379
# of Cases in Age Interval													
0 - 60 days (0 - 2 months)	294	333	335	301	303	274	281	235	295	286	256	263	283
121-180 days (5 - 6 months)	199	191	194	231	223	226	206	211	192	174	218	219	201
61-120 days (3 - 4 months)	116	116	120	111	123	145	150	141	139	136	128	135	140
181-270 days (7 - 9 months)	112	101	92	100	99	105	108	114	97	113	110	129	126
> 270 days (> 9 months)	95	97	110	110	105	105	104	109	114	103	109	112	102

(*) The highest crime category since filing is used to classify cases. For example, a case initially charged with homicide is reported as a homicide regardless of whether or not the charge is reduced since filing. On the other hand, if the charge for a case is upgraded later, then the reporting category in later reports will reflect the upgraded (higher) crime category.

Reflects all documents received by **03/15/2018**.

(1) "Controlled Substance - Non Drug Court" are drug related cases that have never been accepted into drug court.

(2) "Controlled Substance - Drug Court" are drug related cases that have been formally accepted into drug court (identified by "Order of Participation").

Table 6 (cont.). Age of Pending Criminal Cases
King County Superior Court

Crime Category (*)	Feb 2017	Mar 2017	Apr 2017	May 2017	Jun 2017	Jul 2017	Aug 2017	Sep 2017	Oct 2017	Nov 2017	Dec 2017	Jan 2018	Feb 2018
Motor Vehicle Theft													
Age (days)													
Median (50 th percentile)	88	63	81	83	75	74	80	97	93	105	77	71	58
95 th percentile	285	306	336	367	390	284	291	303	334	364	395	375	325
# of Cases in Age Interval													
0 - 60 days (0 - 2 months)	24	34	32	32	30	35	29	21	25	24	32	33	42
61-120 days (3 - 4 months)	19	14	23	22	16	12	22	24	23	17	16	18	19
121-180 days (5 - 6 months)	10	14	11	8	12	13	17	10	9	13	12	7	6
181-270 days (7 - 9 months)	6	2	7	10	6	7	7	11	13	7	8	8	8
> 270 days (> 9 months)	5	6	6	6	4	4	7	5	6	8	6	8	7
Controlled Substance - Non Drug Court⁽¹⁾													
Age (days)													
Median (50 th percentile)	92	89	98	91	88	88	85	92	83	93	104	115	120
95 th percentile	451	406	393	408	409	383	388	402	379	405	419	426	428
# of Cases in Age Interval													
0 - 60 days (0 - 2 months)	153	156	137	156	183	163	168	161	181	173	119	106	103
61-120 days (3 - 4 months)	111	109	117	104	87	110	125	118	115	105	139	131	96
121-180 days (5 - 6 months)	75	79	75	67	67	68	51	59	70	67	75	83	77
181-270 days (7 - 9 months)	52	54	59	63	60	61	51	50	40	51	58	70	61
> 270 days (> 9 months)	40	36	39	48	47	55	50	54	54	57	61	60	57
Drug Court⁽²⁾													
Age (days)													
Median (50 th percentile)	424	408	421	415	418	417	412	424	419	420	439	437	428
95 th percentile	996	1014	1043	994	975	979	1010	1040	1036	968	999	963	991
# of Cases in Age Interval													
0 - 60 days (0 - 2 months)	0	2	0	0	0	1	0	1	1	1	0	0	1
61-120 days (3 - 4 months)	4	7	8	11	6	5	9	6	4	4	3	6	1
121-180 days (5 - 6 months)	13	16	13	13	20	16	12	14	17	14	10	8	10
181-270 days (7 - 9 months)	41	47	44	32	34	33	33	34	35	31	31	38	36
> 270 days (> 9 months)	238	236	228	209	214	216	208	207	199	185	190	176	189
Other													
Age (days)													
Median (50 th percentile)	119	116	110	98	100	105	108	114	106	109	105	108	115
95 th percentile	372	392	406	434	458	464	463	493	454	458	447	453	444
# of Cases in Age Interval													
0 - 60 days (0 - 2 months)	140	161	197	183	177	183	170	161	170	169	169	161	155
61-120 days (3 - 4 months)	136	112	101	117	148	136	124	130	120	107	127	129	129
121-180 days (5 - 6 months)	95	98	94	75	70	82	103	90	83	78	87	89	93
181-270 days (7 - 9 months)	96	94	88	83	78	72	63	74	67	78	74	75	83
> 270 days (> 9 months)	75	75	78	83	86	98	95	91	90	80	85	85	87
Criminal RALJ													
Age (days)													
Median (50 th percentile)	237	183	188	174	115	139	151	163	166	180	196	204	189
95 th percentile	698	694	661	690	718	749	601	810	841	863	894	925	953
# of Cases in Age Interval													
0 - 60 days (0 - 2 months)	7	23	31	32	36	26	17	19	21	23	21	22	16
61-120 days (3 - 4 months)	16	6	7	23	31	32	35	24	16	19	21	22	21
121-180 days (5 - 6 months)	16	25	16	6	7	22	29	30	34	23	16	19	19
181-270 days (7 - 9 months)	20	12	21	20	17	11	11	19	26	37	38	29	28
> 270 days (> 9 months)	39	42	38	39	38	41	40	37	34	28	36	41	35

(*) The highest crime category since filing is used to classify cases. For example, a case initially charged with homicide is reported as a homicide regardless of whether or not the charge is reduced since filing. On the other hand, if the charge for a case is upgraded later, then the reporting category in later reports will reflect the upgraded (higher) crime category.

Reflects all documents received by 03/15/2018.

(1) "Controlled Substance - Non Drug Court" are drug related cases that have never been accepted into drug court.

(2) "Controlled Substance - Drug Court" are drug related cases that have been formally accepted into drug court (identified by "Order of Participation").

Table 7. Comparison between SEA/KNT: Filings, Resolutions, and Pending Caseload
King County Superior Court

	Mar 2017	Apr 2017	May 2017	Jun 2017	Jul 2017	Aug 2017	Sep 2017	Oct 2017	Nov 2017	Dec 2017	Jan 2018	Feb 2018 ⁽¹⁾
Total Filings												
SEA - # of Cases Filed	349	337	318	349	303	316	264	339	279	260	290	252
KNT - # of Cases Filed	280	245	265	242	203	277	246	261	241	200	229	200
SEA %	55%	58%	55%	59%	60%	53%	52%	56%	54%	56%	56%	56%
KNT %	45%	42%	45%	41%	40%	47%	48%	44%	46%	44%	44%	44%
Total Resolutions												
SEA - # of Cases Resolved	319	241	293	294	242	338	289	322	269	229	292	329
KNT - # of Cases Resolved	249	202	233	233	176	230	215	261	241	183	238	183
SEA - Drug Court Cases Resolved	26	11	30	15	15	15	17	25	20	13	27	9
KNT - Drug Court Cases Resolved	2	7	9	4	1	6	8	6	11	4	6	2
SEA %	54%	52%	52%	54%	56%	57%	55%	52%	50%	53%	52%	63%
KNT %	42%	44%	41%	43%	41%	39%	41%	43%	45%	43%	42%	35%
SEA - Drug Court %	4%	2%	5%	3%	3%	3%	3%	4%	4%	3%	5%	2%
KNT - Drug Court %	0%	2%	2%	1%	0%	1%	2%	1%	2%	1%	1%	1%
Total Pending												
SEA - # of Cases Pending	1630	1686	1695	1758	1800	1729	1683	1736	1673	1712	1708	1623
KNT - # of Cases Pending	1286	1289	1318	1339	1354	1426	1385	1389	1356	1358	1388	1405
SEA - Drug Court Cases Pending	222	217	195	196	186	184	184	182	172	167	162	162
KNT - Drug Court Cases Pending	86	76	70	78	85	78	78	74	63	67	66	75
SEA %	51%	52%	52%	52%	53%	51%	51%	51%	51%	52%	51%	50%
KNT %	40%	39%	40%	40%	40%	42%	42%	41%	42%	41%	42%	43%
SEA - Drug Court %	7%	7%	6%	6%	5%	5%	6%	5%	5%	5%	5%	5%
KNT - Drug Court %	3%	2%	2%	2%	2%	2%	2%	2%	2%	2%	2%	2%

(1) Reflects all documents received by 03/15/2018.

(2) The number of judges does not include RJC chief judge and the criminal chief judge at SEA.

Table 8. Drug Court Statistics

King County Superior Court

Categories	Jan 2017	Feb 2017	Mar 2017	Apr 2017	May 2017	Jun 2017	Jul 2017	Aug 2017	Sep 2017	Oct 2017	Nov 2017	Dec 2017	Jan 2018	Feb 2018
Referrals - Total	35	38	33	38	47	46	47	66	35	52	46	43	36	44
Directly from PA	19	25	18	19	24	23	25	32	19	30	25	10	11	11
From Mainstream	16	13	25	19	23	23	22	34	16	22	21	33	25	33
Arraignments in Drug Court ⁽¹⁾	19	18	19	18	23	22	16	16	28	15	17	17	16	10
GP in Drug Court ⁽²⁾	0	0	0	1	1	0	1	5	0	4	2	3	5	3
Return to mainstream ⁽³⁾	21	18	12	22	11	18	16	36	20	13	17	24	24	9
Opt-in ⁽⁴⁾	23	14	29	12	17	21	16	26	17	20	14	13	18	20
Graduations ⁽⁵⁾	24	12	8	8	29	16	4	17	12	19	23	8	16	6
Terminations ⁽⁶⁾	7	11	20	10	10	3	12	4	13	12	8	9	17	5

- (1) Arraignments held in drug court regardless opt-in status of the cases.
- (2) Guilty pleas entered in drug court before opt-in.
- (3) Referred to drug court but decision by court order to go to mainstream.
- (4) Opt-in reflects the court order of participation.
- (5) Graduations are dismissals of opted-in cases after the completion of program.
- (6) Terminations are cases that fail in drug court.