



King County

Department of Judicial Administration

Barbara Miner

Director and Superior Court Clerk

(206) 296-9300 (206) 296-0100 TTY/TDD

King County Superior Court

Juvenile Offender Statistical Report

November 2020

Department of Judicial Administration

Prepared by: Shiquan Liao, Ph.D., Statistician

December 15, 2020

Report #: JO-202011

Seattle:
516 Third Avenue Room E609
Seattle, WA 98104-2386

Regional Justice Center:
401 Fourth Avenue North Room 2C
Kent, WA 98032-4429

Juvenile Division:
1211 East Alder Room 3015
Seattle, WA 98122-5598

Juvenile Offender Summary

NOTE: Washington State Supreme Court orders related to the coronavirus pandemic, beginning March 2020, affect the statistics for the foreseeable future.

- **Filings (Table 1)**

The juvenile offender filings in November 2020 were 33 cases. In 2020, the year-to-date monthly average filings were 63 cases. This compares with a monthly average of 280, 208, 187, 151, 150, 137, 108, 110, 102, and 93 cases in 2010, 2011, 2012, 2013, 2014, 2015, 2016, 2017, 2018, and 2019 respectively.

- **Resolutions (Table 2-A)**

The number of resolutions in November 2020 was 65 cases. In 2020, the year-to-date monthly average resolutions were 68 cases. This compares with the average number of resolutions of 289, 220, 196, 145, 135, 128, 117, 98, 102, and 86 cases in 2010, 2011, 2012, 2013, 2014, 2015, 2016, 2017, 2018, and 2019 respectively.

- **Age of Resolved Cases (Tables 2-C)**

Because of the relatively small number of resolutions each month, the average age is likely to fluctuate significantly. Therefore, a more robust measurement of the age is the “median age” (i.e., the days at which 50% of the cases were resolved below the “median age” and 50% beyond the “median age”).

The time to resolve juvenile offender cases has not shown any significant change.

- **Pending Caseload (Tables 3-A and 3-B)**

The pending active caseload (those cases not on warrant, deferred disposition, stay or appeal status, and not yet resolved) at the end of November 2020 was 574 cases.

- **Age of Pending Cases (Table 3-C)**

At the end of November 2020, the median age of the pending cases was 231 days, namely, 50% of the pending cases were about 8 months old (231 days). However, 255 cases are older than 9 months.

CONCLUSION: The average monthly filings in 2020 continued at a low level, with a monthly average of 63 cases. The resolutions in the same time period matched the filing pace, with an average of 68 cases per month in 2020. The pending caseload was 574 cases at the end of November 2020. Half of the pending cases were less than 231 days old.

Terminology

Age of Pending Case

Time (days) from filing to resolution, less suspense time if applicable.

Age of Resolved Case

Time (days) from filing to resolution, less suspense time if applicable.

Filing

A juvenile offender case filed at the King County Superior Court with a new case number assigned.

Median Age

Half cases are less and half cases are more (the 50 percentile).

Pending Case

A case is defined as pending if it is unresolved and not on suspense status.

Pending Caseload

Number of pending cases at the end of reporting period.

Resolution

A case is resolved if all issues in the complaint are fully adjudicated.

Resolution Category

Four resolution categories are used to report resolution of criminal cases: Fact-findings (CVCT, AQCT), guilty plea (GP, GPAT), dismissal (DSM, DAT), and other (all other resolution codes).

Suspended Case

A case is placed in suspense status (removing from active) during the reporting period.

Suspense Status

A case is said to be on suspense status if it is on warrant or appeal.

Suspense Time

Time (days) a case is on suspense status.

DDSP – Deferred Dispositions

Entered – A case listed as entered means that a youth has stipulated to the facts in support of the charge and is considered adjudicated per RCW 13.4-0.127 however the court defers imposition of the disposition based on conditions being met.

Completed by Dismissal – The youth complied with all terms of the deferred disposition conditions and the case is dismissed and charges vacated.

Completed by Order of Disposition – The youth did NOT comply with all terms of the deferred disposition and is sentenced.

Figure 1. Number of Juvenile Offender Filings, Resolutions and Pending Caseload by Month

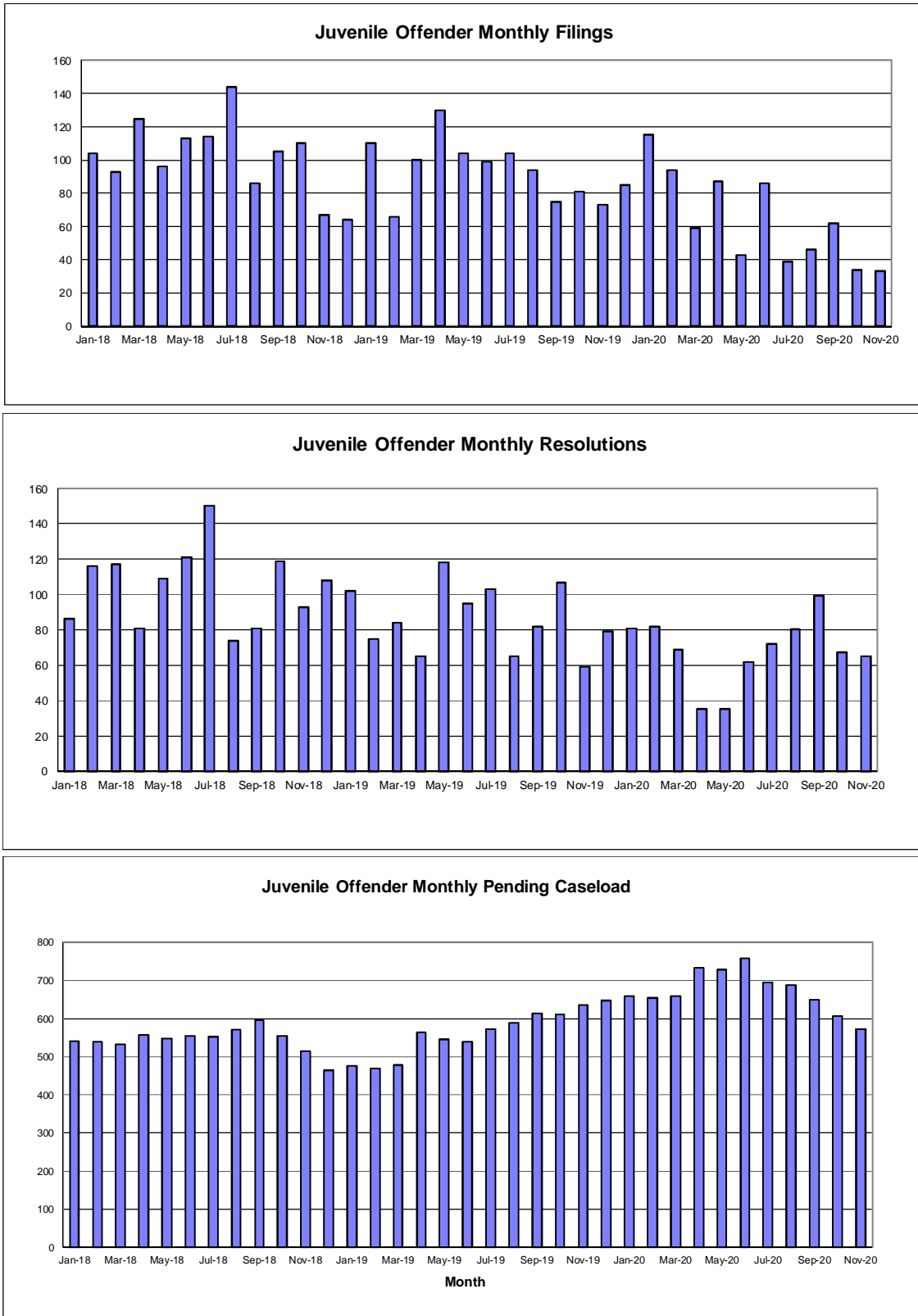


Table 1. Monthly Juvenile Offender New Filings
King County Superior Court

	Jan	Feb	Mar	Apr	May	Jun	Jul	Aug	Sep	Oct	Nov	Dec
All Cases												
2018	104	93	125	96	113	114	144	86	105	110	67	64
2019	110	66	100	130	104	99	104	94	75	81	73	85
2020	115	94	59	87	43	86	39	46	62	34	33	
Felony												
2018	56	55	81	56	73	56	85	47	48	79	46	32
2019	44	41	74	66	63	49	68	55	42	44	37	52
2020	65	50	34	56	28	56	24	29	35	27	23	
Misdemeanor												
2018	42	34	39	35	36	55	55	34	48	28	13	22
2019	49	15	9	34	28	29	34	31	23	24	25	25
2020	45	32	18	29	12	27	11	13	18	6	8	
Other												
2018	6	4	5	5	4	3	4	5	9	3	8	10
2019	17	10	17	30	13	21	2	8	10	13	11	8
2020	5	12	7	3	3	3	4	4	9	1	2	

Table 2-A. Monthly Juvenile Offender Resolutions
King County Superior Court

	Jan	Feb	Mar	Apr	May	Jun	Jul	Aug	Sep	Oct	Nov	Dec
All Cases												
2018	86	116	117	81	109	121	150	74	81	119	93	108
2019	102	75	84	65	118	95	103	65	82	107	59	79
2020	81	82	69	35	35	62	72	80	99	67	65	
Felony												
2018	52	53	66	44	53	66	78	42	45	65	47	63
2019	43	41	49	32	65	49	54	40	52	70	35	37
2020	42	52	34	24	22	36	31	51	52	45	39	
Misdemeanor												
2018	29	34	41	30	44	42	58	26	29	46	39	35
2019	41	25	28	20	37	38	38	15	19	24	18	30
2020	27	19	25	8	9	17	34	21	37	17	19	
Other												
2018	5	5	5	6	4	2	4	3	5	2	7	10
2019	17	7	7	10	9	8	11	10	11	13	6	7
2020	12	11	10	3	4	7	7	8	10	5	6	
Drug Court												
2018	0	24	5	1	8	11	10	3	2	6	0	0
2019	1	2	0	3	7	0	0	0	0	0	0	5
2020	0	0	0	0	0	2	0	0	0	0	1	

Table 2-B. Monthly Juvenile Offender Resolution Category
King County Superior Court

	Jan	Feb	Mar	Apr	May	Jun	Jul	Aug	Sep	Oct	Nov	Dec
All Cases												
2019 # of Resolutions	101	73	84	62	111	95	103	65	82	107	59	74
Resolved by F.F. (%)	1%	3%	0%	0%	0%	0%	0%	0%	0%	0%	0%	0%
Resolved by G.P. (%)	38%	38%	49%	29%	45%	27%	37%	38%	48%	36%	42%	39%
Dismissed (%)	29%	29%	35%	39%	33%	51%	46%	42%	32%	33%	49%	45%
Deferred Disposition (%)	8%	16%	12%	13%	14%	15%	14%	15%	16%	26%	5%	14%
Other Resolutions (%)	25%	14%	5%	19%	7%	7%	4%	5%	5%	6%	3%	3%
2020 # of Resolutions	81	82	69	35	35	60	72	80	99	67	64	
Resolved by F.F. (%)	4%	1%	1%	0%	3%	0%	0%	1%	0%	2%	0%	
Resolved by G.P. (%)	38%	34%	30%	49%	24%	32%	19%	24%	29%	25%	28%	
Dismissed (%)	37%	43%	51%	43%	43%	50%	60%	45%	43%	54%	52%	
Deferred Disposition (%)	16%	9%	9%	0%	31%	15%	15%	25%	18%	18%	17%	
Other Resolutions (%)	5%	13%	9%	9%	9%	3%	6%	5%	9%	2%	3%	
Felony												
2019 # of Resolutions	43	41	49	32	65	49	54	40	52	70	35	37
Resolved by F.F. (%)	2%	2%	0%	0%	0%	0%	0%	0%	0%	0%	0%	0%
Resolved by G.P. (%)	65%	51%	63%	41%	49%	35%	54%	55%	52%	41%	63%	43%
Dismissed (%)	7%	15%	24%	34%	23%	37%	24%	20%	25%	21%	31%	32%
Deferred Disposition (%)	14%	22%	12%	19%	17%	29%	20%	23%	23%	37%	6%	24%
Other Resolutions (%)	12%	10%	0%	6%	11%	0%	2%	3%	0%	0%	0%	0%
2020 # of Resolutions	42	52	34	24	22	36	31	51	52	45	39	
Resolved by F.F. (%)	7%	2%	3%	0%	5%	0%	0%	2%	0%	2%	0%	
Resolved by G.P. (%)	55%	46%	50%	67%	9%	36%	26%	33%	42%	33%	41%	
Dismissed (%)	17%	38%	38%	33%	41%	42%	42%	31%	35%	42%	36%	
Deferred Disposition (%)	21%	12%	9%	0%	45%	22%	32%	33%	23%	22%	23%	
Other Resolutions (%)	0%	2%	0%	0%	0%	0%	0%	0%	0%	0%	0%	
Misdemeanor												
2019 # of Resolutions	41	25	28	20	37	38	38	15	19	24	18	30
Resolved by F.F. (%)	0%	4%	0%	0%	0%	0%	0%	0%	0%	0%	0%	0%
Resolved by G.P. (%)	24%	28%	29%	20%	35%	21%	21%	13%	47%	29%	11%	33%
Dismissed (%)	63%	56%	57%	65%	57%	76%	71%	80%	53%	63%	83%	63%
Deferred Disposition (%)	5%	12%	14%	10%	8%	0%	5%	7%	0%	8%	6%	3%
Other Resolutions (%)	7%	0%	0%	5%	0%	3%	3%	0%	0%	0%	0%	0%
2020 # of Resolutions	27	19	25	8	9	17	34	21	37	17	19	
Resolved by F.F. (%)	0%	0%	3%	0%	0%	0%	0%	0%	0%	0%	0%	
Resolved by G.P. (%)	22%	16%	50%	88%	33%	29%	18%	10%	19%	6%	11%	
Dismissed (%)	70%	79%	38%	12%	56%	65%	79%	81%	65%	88%	84%	
Deferred Disposition (%)	7%	5%	9%	0%	11%	6%	3%	10%	16%	6%	5%	
Other Resolutions (%)	0%	0%	0%	0%	0%	0%	0%	0%	0%	0%	0%	

Resolution categories:

F.F. = Convicted by Court (CVCT) or Acquittal by Court (AQCT);

G.P. = Guilty Plea before Adjudicatory Hearing (GP) or Guilty Plea after Adjudicatory Hearing Commencement (GPAT);

Dismissed = Dismissal before Adjudicatory Hearing (DSM) or Dismissal after Adjudicatory Hearing Commencement (DAT);

Other Resolutions = Uncontested (UNDS) or Change of Venue (CHV) or Declination of Jurisdiction (DECL) or Consolidated Case (CONS).

Age = time between filing and resolution. Suspend time on warrant, diversion, appeal or stay status is excluded.

Drug Court cases are excluded.

Table 2-C. Age (days) of Resolved Juvenile Offender Cases vs. Time Standard

King County Superior Court

	Jan	Feb	Mar	Apr	May	Jun	Jul	Aug	Sep	Oct	Nov	Dec
All Cases												
2018: # of Cases Resolved	86	92	112	80	101	110	140	71	79	113	93	108
Median Age (days)	82	103	106	71	100	109	111	97	116	118	116	124
% in 0 - 4 months (goal=90%)	74%	59%	61%	78%	57%	56%	54%	58%	54%	52%	60%	54%
% in 0 - 6 months (goal=98%)	86%	81%	76%	90%	76%	81%	68%	79%	82%	78%	85%	81%
% in 0 - 9 months (goal=100%)	96%	92%	94%	96%	88%	91%	86%	93%	95%	94%	93%	93%
2019: # of Cases Resolved	101	73	84	62	111	95	103	65	82	107	59	74
Median Age (days)	103	140	149	80	100	140	161	115	147	139	146	109
% in 0 - 4 months (goal=90%)	56%	47%	44%	61%	58%	44%	40%	57%	37%	47%	41%	54%
% in 0 - 6 months (goal=98%)	78%	65%	61%	74%	73%	64%	61%	72%	70%	67%	63%	69%
% in 0 - 9 months (goal=100%)	91%	90%	86%	90%	87%	85%	87%	80%	85%	82%	92%	85%
2020: # of Cases Resolved	81	82	69	35	35	60	72	80	99	67	64	
Median Age (days)	137	151	98	86	174	168	190	253	197	189	269	
% in 0 - 4 months (goal=90%)	42%	43%	58%	69%	23%	38%	28%	14%	29%	15%	15%	
% in 0 - 6 months (goal=98%)	67%	61%	71%	80%	43%	52%	43%	28%	45%	46%	32%	
% in 0 - 9 months (goal=100%)	87%	74%	88%	97%	51%	73%	79%	53%	73%	67%	49%	
Felony												
2018: # of Cases Resolved	52	53	66	44	53	66	78	42	45	65	47	63
Median Age (days)	90	119	111	72	91	106	111	120	134	118	102	119
% in 0 - 4 months (goal=90%)	69%	51%	59%	80%	60%	58%	55%	52%	47%	52%	64%	50%
% in 0 - 6 months (goal=98%)	85%	77%	80%	91%	77%	81%	77%	78%	78%	80%	83%	80%
% in 0 - 9 months (goal=100%)	94%	91%	94%	94%	91%	89%	86%	95%	91%	95%	94%	94%
2019: # of Cases Resolved	43	41	49	32	65	49	54	40	52	70	35	37
Median Age (days)	119	140	166	93	123	167	173	115	156	154	155	154
% in 0 - 4 months (goal=90%)	51%	44%	37%	59%	49%	35%	31%	60%	31%	37%	37%	41%
% in 0 - 6 months (goal=98%)	72%	66%	59%	78%	64%	57%	53%	68%	62%	63%	54%	60%
% in 0 - 9 months (goal=100%)	93%	95%	86%	84%	79%	81%	86%	73%	85%	80%	91%	79%
2020: # of Cases Resolved	42	52	34	24	22	36	31	51	52	45	39	
Median Age (days)	149	182	98	96	178	196	206	296	209	242	271	
% in 0 - 4 months (goal=90%)	33%	31%	59%	67%	23%	33%	19%	6%	19%	11%	21%	
% in 0 - 6 months (goal=98%)	64%	50%	68%	79%	50%	44%	32%	18%	38%	38%	31%	
% in 0 - 9 months (goal=100%)	85%	67%	82%	96%	64%	67%	71%	47%	67%	58%	49%	
Misdemeanor												
2018: # of Cases Resolved	29	34	41	30	44	42	58	26	29	46	39	35
Median Age (days)	80	87	106	74	121	114	132	83	92	123	124	127
% in 0 - 4 months (goal=90%)	79%	68%	59%	73%	50%	52%	50%	62%	59%	50%	49%	49%
% in 0 - 6 months (goal=98%)	86%	82%	66%	87%	73%	79%	53%	77%	86%	74%	85%	78%
% in 0 - 9 months (goal=100%)	100%	94%	93%	100%	84%	93%	86%	89%	100%	91%	90%	89%
2019: # of Cases Resolved	41	25	28	20	37	38	38	15	19	24	18	30
Median Age (days)	115	173	142	176	99	126	156	121	148	116	143	89
% in 0 - 4 months (goal=90%)	54%	44%	43%	45%	65%	47%	45%	47%	42%	67%	44%	67%
% in 0 - 6 months (goal=98%)	86%	60%	54%	55%	84%	68%	66%	74%	74%	75%	72%	80%
% in 0 - 9 months (goal=100%)	96%	84%	83%	95%	95%	86%	87%	87%	74%	83%	89%	93%
2020: # of Cases Resolved	27	19	25	8	9	17	34	21	37	17	19	
Median Age (days)	120	153	110	97	147	143	177	225	202	169	259	
% in 0 - 4 months (goal=90%)	52%	37%	56%	63%	23%	47%	29%	19%	27%	12%	0%	
% in 0 - 6 months (goal=98%)	74%	63%	72%	75%	34%	71%	50%	38%	41%	53%	37%	
% in 0 - 9 months (goal=100%)	89%	74%	92%	100%	34%	88%	88%	62%	76%	82%	53%	

Age = time between filing and resolution. Suspense time on warrant, appeal or stay status is excluded.
Drug Court cases are excluded.

Table 3-A. Monthly Juvenile Offender Pending Caseload

King County Superior Court

	Jan	Feb	Mar	Apr	May	Jun	Jul	Aug	Sep	Oct	Nov	Dec
All Cases												
2017	473	469	430	472	491	488	467	496	502	498	517	504
2018	542	540	532	557	548	554	553	570	595	556	515	464
2019	477	469	479	565	547	539	573	588	614	611	636	647
2020	659	654	659	733	729	758	694	688	649	606	574	
Felony												
2017	230	221	213	225	250	236	240	249	254	263	269	251
2018	260	270	277	292	307	302	310	325	328	320	314	277
2019	275	271	290	339	324	323	355	365	374	358	371	388
2020	405	386	393	435	433	454	427	419	396	373	355	
Misdemeanor												
2017	165	176	144	167	152	163	151	160	170	149	165	172
2018	194	198	190	199	184	208	205	208	226	204	174	157
2019	166	160	139	160	159	138	146	153	165	174	182	178
2020	180	194	192	219	217	231	191	195	178	159	149	
Other												
2017	7	7	7	8	8	10	11	12	11	11	11	11
2018	12	12	12	13	12	13	14	16	21	17	16	19
2019	22	25	37	56	61	75	69	67	70	71	75	78
2020	70	70	69	74	74	71	72	70	71	70	67	
Drug Court												
2017	71	65	66	72	81	79	65	75	67	75	72	70
2018	76	60	53	53	45	31	24	21	20	15	11	11
2019	14	13	13	10	3	3	3	3	5	8	8	3
2020	4	4	5	5	5	2	4	4	4	4	3	

The pending caseload is total number of active cases, excluding cases on warrant/appeal/stay status.

Table 3-B. Month-to-Month Change (%) in Juvenile Offender Pending Caseload

King County Superior Court

	Jan	Feb	Mar	Apr	May	Jun	Jul	Aug	Sep	Oct	Nov	Dec
All Cases												
2017	+7.3%	-0.8%	-8.3%	+9.8%	+4.0%	-0.6%	-4.3%	+6.2%	+1.2%	-0.8%	+3.8%	-2.5%
2018	+7.5%	-0.4%	-1.5%	+4.7%	-1.6%	+1.1%	-0.2%	+3.1%	+4.4%	-6.6%	-7.4%	-9.9%
2019	+2.8%	-1.7%	+2.1%	+18.0%	-3.2%	-1.5%	+6.3%	+2.6%	+4.4%	-0.5%	+4.1%	+1.7%
2020	+1.9%	-0.8%	+0.8%	+11.2%	-0.5%	+4.0%	-8.4%	-0.9%	-5.7%	-6.6%	-5.3%	
Felony												
2017	+9.5%	-3.9%	-3.6%	+5.6%	+11.1%	-5.6%	+1.7%	+3.8%	+2.0%	+3.5%	+2.3%	-6.7%
2018	+3.6%	+3.8%	+2.6%	+5.4%	+5.1%	-1.6%	+2.6%	+4.8%	+0.9%	-2.4%	-1.9%	-11.8%
2019	-0.7%	-1.5%	+7.0%	+16.9%	-4.4%	-0.3%	+9.9%	+2.8%	+2.5%	-4.3%	+3.6%	+4.6%
2020	+4.4%	-4.7%	+1.8%	+10.7%	-0.5%	+4.8%	-5.9%	-1.9%	-5.5%	-5.8%	-4.8%	
Misdemeanor												
2017	+5.1%	+6.7%	-18.2%	+16.0%	-9.0%	+7.2%	-7.4%	+6.0%	+6.3%	-12.4%	+10.7%	+4.2%
2018	+12.8%	+2.1%	-4.0%	+4.7%	-7.5%	+13.0%	-1.4%	+1.5%	+8.7%	-9.7%	-14.7%	-9.8%
2019	+5.7%	-3.6%	-13.1%	+15.1%	-0.6%	-13.2%	+5.8%	+4.8%	+7.8%	+5.5%	+4.6%	-2.2%
2020	+1.1%	+7.8%	-1.0%	+14.1%	-0.9%	+6.5%	-17.3%	+2.1%	-8.7%	-10.7%	-6.3%	

The pending caseload is total number of active cases, excluding cases on warrant/appeal/stay status.
Drug Court cases are excluded.

Table 3-C. Age (days) of Pending Juvenile Offender Cases
(Excluding drug court cases, and suspense time subtracted)

King County Superior Court

	Jan	Feb	Mar	Apr	May	Jun	Jul	Aug	Sep	Oct	Nov	Dec
All Cases												
2019: # of Pending Cases	463	456	466	555	544	536	570	585	609	603	628	644
<i>Median Age (days)</i>	<i>121</i>	<i>127</i>	<i>110</i>	<i>95</i>	<i>98</i>	<i>101</i>	<i>97</i>	<i>110</i>	<i>109</i>	<i>118</i>	<i>130</i>	<i>142</i>
# of cases within 0 - 2 mo.	138	138	156	217	201	163	198	195	173	165	162	164
# of cases within 3 - 4 mo.	93	83	88	106	98	138	156	116	151	143	135	124
# of cases within 5 - 6 mo.	87	86	70	63	75	74	66	120	107	90	108	104
# of cases within 7 - 9 mo.	89	82	80	81	75	55	40	48	70	99	112	124
# of cases > 9 mo.	56	67	72	88	95	106	110	106	108	106	111	128
2020: # of Pending Cases	655	650	654	728	724	756	690	684	645	602	571	
<i>Median Age (days)</i>	<i>140</i>	<i>130</i>	<i>151</i>	<i>148</i>	<i>160</i>	<i>167</i>	<i>191</i>	<i>207</i>	<i>211</i>	<i>234</i>	<i>231</i>	
# of cases within 0 - 2 mo.	194	203	143	161	146	142	124	77	109	86	63	
# of cases within 3 - 4 mo.	109	104	150	151	115	138	105	121	98	67	97	
# of cases within 5 - 6 mo.	91	88	77	93	131	129	101	97	88	89	64	
# of cases within 7 - 9 mo.	107	105	106	105	101	107	108	131	108	102	92	
# of cases > 9 mo.	154	150	178	218	231	240	252	258	242	258	255	
Felony												
2019: # of Pending Cases	275	271	290	339	324	323	355	365	374	358	371	388
<i>Median Age (days)</i>	<i>121</i>	<i>128</i>	<i>112</i>	<i>97</i>	<i>98</i>	<i>103</i>	<i>99</i>	<i>117</i>	<i>117</i>	<i>119</i>	<i>130</i>	<i>141</i>
# of cases within 0 - 2 mo.	69	74	101	140	116	91	121	124	100	96	95	100
# of cases within 3 - 4 mo.	67	50	50	52	64	90	99	64	91	87	75	74
# of cases within 5 - 6 mo.	48	55	51	41	38	45	48	84	73	49	66	64
# of cases within 7 - 9 mo.	57	47	41	51	51	38	22	32	48	69	72	76
# of cases > 9 mo.	34	45	47	55	55	59	65	61	62	57	63	74
2020: # of Pending Cases	405	386	393	435	433	454	427	419	396	373	355	
<i>Median Age (days)</i>	<i>133</i>	<i>127</i>	<i>144</i>	<i>148</i>	<i>159</i>	<i>161</i>	<i>184</i>	<i>195</i>	<i>197</i>	<i>201</i>	<i>215</i>	
# of cases within 0 - 2 mo.	123	118	88	102	92	87	74	52	69	59	45	
# of cases within 3 - 4 mo.	71	69	89	85	73	88	67	73	66	45	62	
# of cases within 5 - 6 mo.	55	55	53	60	74	77	69	67	54	59	49	
# of cases within 7 - 9 mo.	65	61	66	68	66	66	72	84	75	69	60	
# of cases > 9 mo.	91	83	97	120	128	136	145	143	132	141	139	
Misdemeanor												
2019: # of Pending Cases	166	160	139	160	159	138	146	153	165	174	182	178
<i>Median Age (days)</i>	<i>102</i>	<i>105</i>	<i>116</i>	<i>105</i>	<i>121</i>	<i>126</i>	<i>84</i>	<i>77</i>	<i>83</i>	<i>98</i>	<i>103</i>	<i>117</i>
# of cases within 0 - 2 mo.	63	56	37	46	58	43	59	62	62	57	55	53
# of cases within 3 - 4 mo.	24	31	35	46	20	25	32	32	44	47	49	39
# of cases within 5 - 6 mo.	33	26	16	20	32	23	9	16	16	26	30	32
# of cases within 7 - 9 mo.	30	31	32	23	19	14	15	12	12	11	17	21
# of cases > 9 mo.	16	16	19	25	30	33	31	31	31	33	31	33
2020: # of Pending Cases	180	194	192	219	217	231	191	195	178	159	149	
<i>Median Age (days)</i>	<i>113</i>	<i>86</i>	<i>98</i>	<i>113</i>	<i>139</i>	<i>145</i>	<i>161</i>	<i>192</i>	<i>177</i>	<i>208</i>	<i>231</i>	
# of cases within 0 - 2 mo.	66	82	51	53	48	51	44	24	36	26	18	
# of cases within 3 - 4 mo.	29	28	56	63	39	46	35	40	27	17	28	
# of cases within 5 - 6 mo.	26	20	16	27	52	49	27	26	30	26	12	
# of cases within 7 - 9 mo.	26	31	31	25	23	30	31	41	27	27	27	
# of cases > 9 mo.	33	33	38	51	55	55	54	64	58	63	64	

Age = time between filing and the end of the month. Suspense time on warrant, appeal or stay status is excluded.
Drug Court cases are excluded.