



King County

Department of Judicial Administration

Barbara Miner

Director and Superior Court Clerk

(206) 296-9300 (206) 296-0100 TTY/TDD

King County Superior Court

Juvenile Offender Statistical Report

December 2021

Department of Judicial Administration

Prepared by: Shiquan Liao, Ph.D., Statistician

January 15, 2022

Report #: JO-2021-12

Seattle:
516 Third Avenue Room E609
Seattle, WA 98104-2386

Regional Justice Center:
401 Fourth Avenue North Room 2C
Kent, WA 98032-4429

Juvenile Division:
1211 East Alder Room 3015
Seattle, WA 98122-5598

Juvenile Offender Summary

NOTE: Washington State Supreme Court orders related to the coronavirus pandemic, beginning March 2020, affect the statistics for the foreseeable future.

- **Filings (Table 1)**

The number of juvenile offender filings in December 2021 was 25 cases. In 2021, the average number of filing is 30 cases per month. This compares with a monthly average of 137, 108, 110, 102, 93, and 66 cases in 2015, 2016, 2017, 2018, 2019, and 2020 respectively.

- **Resolutions (Table 2-A)**

The number of resolutions in December 2021 was 21 cases. In 2021, the monthly average number of resolutions is 52 cases. This compares with the average number of resolutions of 128, 117, 98, 102, 86, and 69 cases in 2015, 2016, 2017, 2018, 2019, and 2020 respectively.

- **Age of Resolved Cases (Tables 2-C)**

Because of the relatively small number of resolutions each month, the average age is likely to fluctuate significantly. Therefore, a more robust measurement of the age is the “median age” (i.e., the days at which 50% of the cases were resolved below the “median age” and 50% beyond the “median age”).

The time to resolve juvenile offender cases has shown an increasing pattern during the COVID-19 pandemic. For example, the median age of all resolved cases was 346 days in December 2021.

- **Pending Caseload (Tables 3-A and 3-B)**

The pending active caseload (those cases not on warrant, deferred disposition, stay or appeal status, and not yet resolved) at the end of December 2021 was 286 cases, a very low volume.

- **Age of Pending Cases (Table 3-C)**

At the end of December 2021, the median age of the pending cases was 241 days, namely, 50% of the pending cases were just about 8 months old (241 days), with 135 cases older than 9 months.

CONCLUSION: The filings in 2021 remain at a low level, averaging 30 cases per month. The resolutions in the same time period exceeded the filing pace, with an average of 52 cases per month. The pending caseload was 286 cases at the end of December 2021, a very low volume. Half of the pending cases were less than 241 days old.

Terminology

Age of Pending Case

Time (days) from filing to resolution, less suspense time if applicable.

Age of Resolved Case

Time (days) from filing to resolution, less suspense time if applicable.

Filing

A juvenile offender case filed at the King County Superior Court with a new case number assigned.

Median Age

Half cases are less and half cases are more (the 50 percentile).

Pending Case

A case is defined as pending if it is unresolved and not on suspense status.

Pending Caseload

Number of pending cases at the end of reporting period.

Resolution

A case is resolved if all issues in the complaint are fully adjudicated.

Resolution Category

Four resolution categories are used to report resolution of criminal cases: Fact-findings (CVCT, AQCT), guilty plea (GP, GPAT), dismissal (DSM, DAT), and other (all other resolution codes).

Suspended Case

A case is placed in suspense status (removing from active) during the reporting period.

Suspense Status

A case is said to be on suspense status if it is on warrant or appeal.

Suspense Time

Time (days) a case is on suspense status.

DDSP – Deferred Dispositions

Entered – A case listed as entered means that a youth has stipulated to the facts in support of the charge and is considered adjudicated per RCW 13.4-0.127 however the court defers imposition of the disposition based on conditions being met.

Completed by Dismissal – The youth complied with all terms of the deferred disposition conditions and the case is dismissed and charges vacated.

Completed by Order of Disposition – The youth did NOT comply with all terms of the deferred disposition and is sentenced.

Figure 1. Number of Juvenile Offender Filings, Resolutions and Pending Caseload by Month

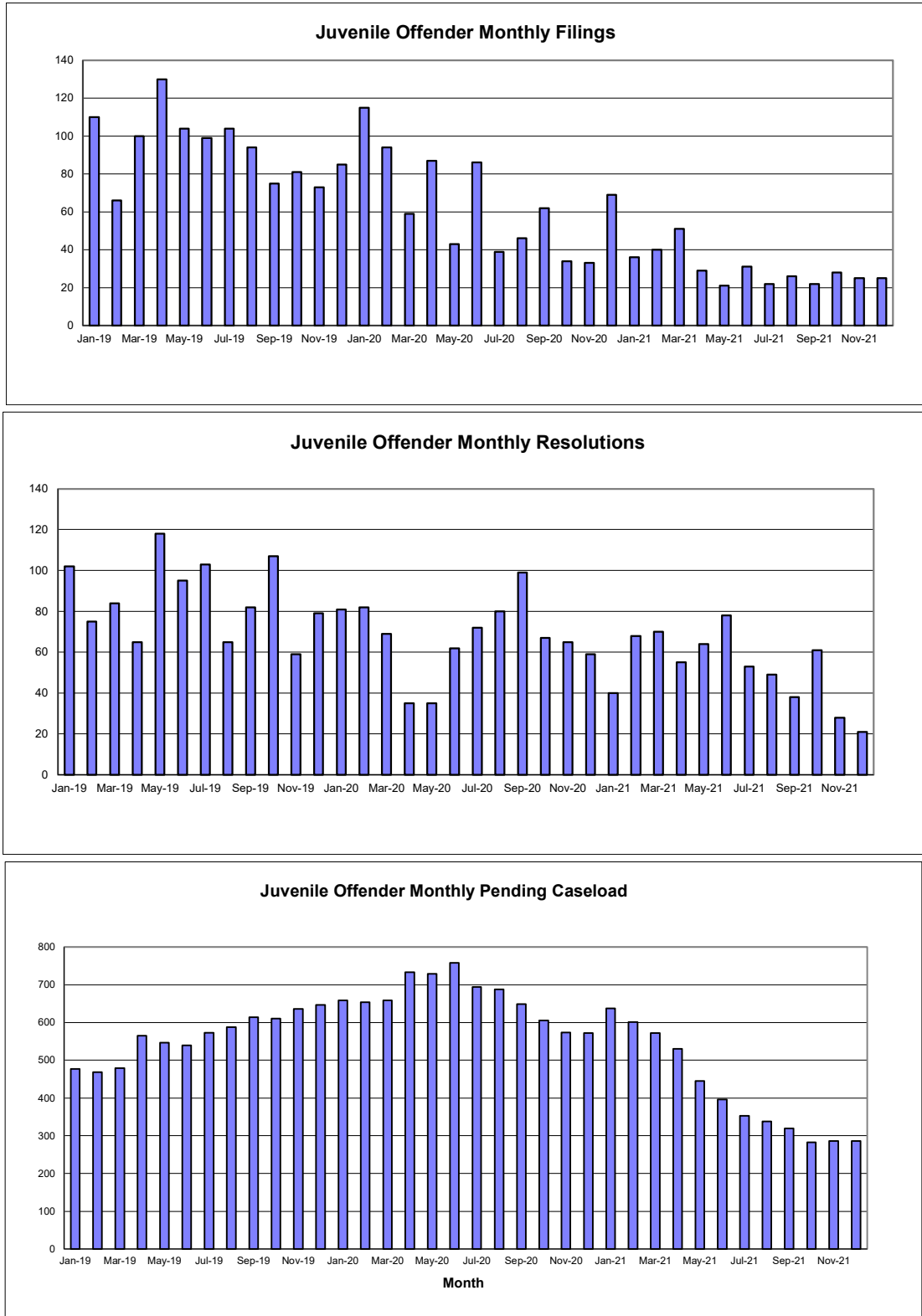


Table 1. Monthly Juvenile Offender New Filings
King County Superior Court

	Jan	Feb	Mar	Apr	May	Jun	Jul	Aug	Sep	Oct	Nov	Dec
All Cases												
2018	104	93	125	96	113	114	144	86	105	110	67	64
2019	110	66	100	130	104	99	104	94	75	81	73	85
2020	115	94	59	87	43	86	39	46	62	34	33	69
2021	36	40	51	29	21	31	22	26	22	28	25	25
Felony												
2018	56	55	81	56	73	56	85	47	48	79	46	32
2019	44	41	74	66	63	49	68	55	42	44	37	52
2020	65	50	34	56	28	56	24	29	35	27	23	44
2021	30	35	33	21	18	23	14	19	13	18	18	17
Misdemeanor												
2018	42	34	39	35	36	55	55	34	48	28	13	22
2019	49	15	9	34	28	29	34	31	23	24	25	25
2020	45	32	18	29	12	27	11	13	18	6	8	22
2021	6	2	14	5	3	8	6	5	7	9	6	6
Other												
2018	6	4	5	5	4	3	4	5	9	3	8	10
2019	17	10	17	30	13	21	2	8	10	13	11	8
2020	5	12	7	3	3	3	4	4	9	1	2	3
2021	0	3	4	3	0	0	2	2	2	1	1	2

Table 2-A. Monthly Juvenile Offender Resolutions
King County Superior Court

	Jan	Feb	Mar	Apr	May	Jun	Jul	Aug	Sep	Oct	Nov	Dec
All Cases												
2018	86	116	117	81	109	121	150	74	81	119	93	108
2019	102	75	84	65	118	95	103	65	82	107	59	79
2020	81	82	69	35	35	62	72	80	99	67	65	59
2021	40	68	70	55	64	78	53	49	38	61	28	21
Felony												
2018	52	53	66	44	53	66	78	42	45	65	47	63
2019	43	41	49	32	65	49	54	40	52	70	35	37
2020	42	52	34	24	22	36	31	51	52	45	39	31
2021	20	31	41	26	33	43	25	32	27	32	19	12
Misdemeanor												
2018	29	34	41	30	44	42	58	26	29	46	39	35
2019	41	25	28	20	37	38	38	15	19	24	18	30
2020	27	19	25	8	9	17	34	21	37	17	19	23
2021	20	32	27	22	25	25	15	12	8	24	7	6
Other												
2018	5	5	5	6	4	2	4	3	5	2	7	10
2019	17	7	7	10	9	8	11	10	11	13	6	7
2020	12	11	10	3	4	7	7	8	10	5	6	4
2021	0	5	2	7	6	10	13	5	3	5	2	3

Table 2-B. Monthly Juvenile Offender Resolution Category

King County Superior Court

	Jan	Feb	Mar	Apr	May	Jun	Jul	Aug	Sep	Oct	Nov	Dec
All Cases												
2020 # of Resolutions	81	82	69	35	35	60	72	80	99	67	64	58
Resolved by F.F. (%)	4%	1%	1%	0%	3%	0%	0%	1%	0%	2%	0%	0%
Resolved by G.P. (%)	38%	34%	30%	49%	24%	32%	19%	24%	29%	25%	28%	45%
Dismissed (%)	37%	43%	51%	43%	43%	50%	60%	45%	43%	54%	52%	36%
Deferred Disposition (%)	16%	9%	9%	0%	31%	15%	15%	25%	18%	18%	17%	14%
Other Resolutions (%)	5%	13%	9%	9%	9%	3%	6%	5%	9%	2%	3%	5%
2021 # of Resolutions	40	68	70	55	64	78	53	49	38	61	28	21
Resolved by F.F. (%)	0%	0%	1%	0%	0%	0%	0%	0%	0%	2%	7%	0%
Resolved by G.P. (%)	35%	32%	37%	47%	47%	46%	38%	51%	47%	36%	29%	24%
Dismissed (%)	60%	44%	46%	36%	38%	40%	49%	33%	40%	48%	43%	48%
Deferred Disposition (%)	5%	18%	13%	11%	14%	14%	9%	14%	13%	15%	11%	14%
Other Resolutions (%)	0%	6%	3%	6%	2%	0%	4%	2%	0%	0%	11%	14%
Felony												
2020 # of Resolutions	42	52	34	24	22	36	31	51	52	45	39	31
Resolved by F.F. (%)	7%	2%	3%	0%	5%	0%	0%	2%	0%	2%	0%	0%
Resolved by G.P. (%)	55%	46%	50%	67%	9%	36%	26%	33%	42%	33%	41%	52%
Dismissed (%)	17%	38%	38%	33%	41%	42%	42%	31%	35%	42%	36%	29%
Deferred Disposition (%)	21%	12%	9%	0%	45%	22%	32%	33%	23%	22%	23%	19%
Other Resolutions (%)	0%	2%	0%	0%	0%	0%	0%	0%	0%	0%	0%	0%
2021 # of Resolutions	20	31	41	26	33	43	25	32	27	32	19	12
Resolved by F.F. (%)	0%	0%	2%	0%	0%	0%	0%	0%	0%	3%	11%	0%
Resolved by G.P. (%)	35%	36%	32%	65%	61%	56%	56%	59%	59%	44%	32%	42%
Dismissed (%)	60%	39%	49%	12%	18%	21%	28%	22%	22%	25%	32%	25%
Deferred Disposition (%)	5%	26%	17%	23%	21%	23%	16%	19%	19%	28%	16%	25%
Other Resolutions (%)	0%	0%	0%	0%	0%	0%	0%	0%	0%	0%	11%	8%
Misdemeanor												
2020 # of Resolutions	27	19	25	8	9	17	34	21	37	17	19	23
Resolved by F.F. (%)	0%	0%	3%	0%	0%	0%	0%	0%	0%	0%	0%	0%
Resolved by G.P. (%)	22%	16%	50%	88%	33%	29%	18%	10%	19%	6%	11%	39%
Dismissed (%)	70%	79%	38%	12%	56%	65%	79%	81%	65%	88%	84%	52%
Deferred Disposition (%)	7%	5%	9%	0%	11%	6%	3%	10%	16%	6%	5%	9%
Other Resolutions (%)	0%	0%	0%	0%	0%	0%	0%	0%	0%	0%	0%	0%
2021 # of Resolutions	20	32	27	22	25	25	15	12	8	24	7	6
Resolved by F.F. (%)	0%	0%	0%	0%	0%	0%	0%	0%	0%	0%	0%	0%
Resolved by G.P. (%)	35%	34%	48%	41%	24%	40%	27%	50%	13%	33%	29%	0%
Dismissed (%)	60%	50%	44%	59%	68%	56%	67%	50%	88%	67%	71%	100%
Deferred Disposition (%)	5%	13%	7%	0%	8%	4%	7%	0%	0%	0%	0%	0%
Other Resolutions (%)	0%	3%	0%	0%	0%	0%	0%	0%	0%	0%	0%	0%

Resolution categories:

F.F. = Convicted by Court (CVCT) or Acquittal by Court (AQCT);

G.P. = Guilty Plea before Adjudicatory Hearing (GP) or Guilty Plea after Adjudicatory Hearing Commencement (GPAT);

Dismissed = Dismissal before Adjudicatory Hearing (DSM) or Dismissal after Adjudicatory Hearing Commencement (DAT);

Other Resolutions = Uncontested (UNDS) or Change of Venue (CHV) or Declination of Jurisdiction (DECL) or Consolidated Case (CONS).

Age = time between filing and resolution. Suspense time on warrant, diversion, appeal or stay status is excluded.

Table 2-C. Age (days) of Resolved Juvenile Offender Cases vs. Time Standard

King County Superior Court

	Jan	Feb	Mar	Apr	May	Jun	Jul	Aug	Sep	Oct	Nov	Dec
All Cases												
2019: # of Cases Resolved	101	73	84	62	111	95	103	65	82	107	59	74
Median Age (days)	103	140	149	80	100	140	161	115	147	139	146	109
% in 0 - 4 months (goal=90%)	56%	47%	44%	61%	58%	44%	40%	57%	37%	47%	41%	54%
% in 0 - 6 months (goal=98%)	78%	65%	61%	74%	73%	64%	61%	72%	70%	67%	63%	69%
% in 0 - 9 months (goal=100%)	91%	90%	86%	90%	87%	85%	87%	80%	85%	82%	92%	85%
2020: # of Cases Resolved	81	82	69	35	35	60	72	80	99	67	64	58
Median Age (days)	137	151	98	86	174	168	190	253	197	189	269	216
% in 0 - 4 months (goal=90%)	42%	43%	58%	69%	23%	38%	28%	14%	29%	15%	15%	25%
% in 0 - 6 months (goal=98%)	67%	61%	71%	80%	43%	52%	43%	28%	45%	46%	32%	41%
% in 0 - 9 months (goal=100%)	87%	74%	88%	97%	51%	73%	79%	53%	73%	67%	49%	61%
2021: # of Cases Resolved	40	68	70	55	64	78	53	49	38	61	28	21
Median Age (days)	252	249	202	176	186	161	344	202	284	245	284	346
% in 0 - 4 months (goal=90%)	20%	24%	30%	36%	25%	30%	11%	18%	13%	20%	21%	24%
% in 0 - 6 months (goal=98%)	35%	37%	44%	51%	48%	53%	21%	41%	29%	30%	29%	24%
% in 0 - 9 months (goal=100%)	60%	59%	66%	65%	66%	76%	36%	55%	45%	56%	46%	48%
Felony												
2019: # of Cases Resolved	43	41	49	32	65	49	54	40	52	70	35	37
Median Age (days)	119	140	166	93	123	167	173	115	156	154	155	154
% in 0 - 4 months (goal=90%)	51%	44%	37%	59%	49%	35%	31%	60%	31%	37%	37%	41%
% in 0 - 6 months (goal=98%)	72%	66%	59%	78%	64%	57%	53%	68%	62%	63%	54%	60%
% in 0 - 9 months (goal=100%)	93%	95%	86%	84%	79%	81%	86%	73%	85%	80%	91%	79%
2020: # of Cases Resolved	42	52	34	24	22	36	31	51	52	45	39	31
Median Age (days)	149	182	98	96	178	196	206	296	209	242	271	230
% in 0 - 4 months (goal=90%)	33%	31%	59%	67%	23%	33%	19%	6%	19%	11%	21%	19%
% in 0 - 6 months (goal=98%)	64%	50%	68%	79%	50%	44%	32%	18%	38%	38%	31%	39%
% in 0 - 9 months (goal=100%)	85%	67%	82%	96%	64%	67%	71%	47%	67%	58%	49%	61%
2021: # of Cases Resolved	20	31	41	26	33	43	25	32	27	32	19	12
Median Age (days)	239	252	198	137	196	157	301	217	265	238	439	316
% in 0 - 4 months (goal=90%)	15%	10%	27%	42%	24%	28%	12%	16%	11%	22%	16%	17%
% in 0 - 6 months (goal=98%)	30%	23%	41%	62%	45%	56%	24%	38%	33%	34%	16%	17%
% in 0 - 9 months (goal=100%)	55%	55%	68%	65%	70%	77%	36%	56%	52%	63%	37%	50%
Misdemeanor												
2019: # of Cases Resolved	41	25	28	20	37	38	38	15	19	24	18	30
Median Age (days)	115	173	142	176	99	126	156	121	148	116	143	89
% in 0 - 4 months (goal=90%)	54%	44%	43%	45%	65%	47%	45%	47%	42%	67%	44%	67%
% in 0 - 6 months (goal=98%)	86%	60%	54%	55%	84%	68%	66%	74%	74%	75%	72%	80%
% in 0 - 9 months (goal=100%)	96%	84%	83%	95%	95%	86%	87%	87%	74%	83%	89%	93%
2020: # of Cases Resolved	27	19	25	8	9	17	34	21	37	17	19	23
Median Age (days)	120	153	110	97	147	143	177	225	202	169	259	159
% in 0 - 4 months (goal=90%)	52%	37%	56%	63%	23%	47%	29%	19%	27%	12%	0%	26%
% in 0 - 6 months (goal=98%)	74%	63%	72%	75%	34%	71%	50%	38%	41%	53%	37%	39%
% in 0 - 9 months (goal=100%)	89%	74%	92%	100%	34%	88%	88%	62%	76%	82%	53%	61%
2021: # of Cases Resolved	20	32	27	22	25	25	15	12	8	24	7	6
Median Age (days)	253	252	230	238	150	182	331	298	316	280	234	368
% in 0 - 4 months (goal=90%)	25%	31%	30%	27%	28%	32%	7%	17%	25%	17%	29%	17%
% in 0 - 6 months (goal=98%)	40%	47%	44%	41%	52%	48%	14%	42%	25%	21%	43%	17%
% in 0 - 9 months (goal=100%)	65%	63%	59%	64%	64%	76%	47%	42%	38%	46%	57%	33%

Age = time between filing and resolution. Suspense time on warrant, appeal or stay status is excluded.

Table 3-A. Monthly Juvenile Offender Pending Caseload

King County Superior Court

	Jan	Feb	Mar	Apr	May	Jun	Jul	Aug	Sep	Oct	Nov	Dec
All Cases												
2018	542	540	532	557	548	554	553	570	595	556	515	464
2019	477	469	479	565	547	539	573	588	614	611	636	647
2020	659	654	659	733	729	758	694	688	649	606	574	572
2021	638	601	572	530	445	396	353	338	319	283	286	286
Felony												
2018	260	270	277	292	307	302	310	325	328	320	314	277
2019	275	271	290	339	324	323	355	365	374	358	371	388
2020	405	386	393	435	433	454	427	419	396	373	355	366
2021	408	392	363	346	296	257	230	214	195	171	175	177
Misdemeanor												
2018	194	198	190	199	184	208	205	208	226	204	174	157
2019	166	160	139	160	159	138	146	153	165	174	182	178
2020	180	194	192	219	217	231	191	195	178	159	149	153
2021	184	164	164	145	110	101	86	86	85	73	73	71
Other												
2018	12	12	12	13	12	13	14	16	21	17	16	19
2019	22	25	37	56	61	75	69	67	70	71	75	78
2020	70	70	69	74	74	71	72	70	71	70	67	51
2021	46	45	45	39	39	38	37	38	39	39	38	38

The pending caseload is total number of active cases, excluding cases on warrant/appeal/stay status.

Table 3-B. Month-to-Month Change (%) in Juvenile Offender Pending Caseload

King County Superior Court

	Jan	Feb	Mar	Apr	May	Jun	Jul	Aug	Sep	Oct	Nov	Dec
All Cases												
2018	+7.5%	-0.4%	-1.5%	+4.7%	-1.6%	+1.1%	-0.2%	+3.1%	+4.4%	-6.6%	-7.4%	-9.9%
2019	+2.8%	-1.7%	+2.1%	+18.0%	-3.2%	-1.5%	+6.3%	+2.6%	+4.4%	-0.5%	+4.1%	+1.7%
2020	+1.9%	-0.8%	+0.8%	+11.2%	-0.5%	+4.0%	-8.4%	-0.9%	-5.7%	-6.6%	-5.3%	-0.3%
2021	+11.5%	-5.8%	-4.8%	-7.3%	-16.0%	-11.0%	-10.9%	-4.2%	-5.9%	-11.3%	+1.1%	+0.0%
Felony												
2018	+3.6%	+3.8%	+2.6%	+5.4%	+5.1%	-1.6%	+2.6%	+4.8%	+0.9%	-2.4%	-1.9%	-11.8%
2019	-0.7%	-1.5%	+7.0%	+16.9%	-4.4%	-0.3%	+9.9%	+2.8%	+2.5%	-4.3%	+3.6%	+4.6%
2020	+4.4%	-4.7%	+1.8%	+10.7%	-0.5%	+4.8%	-5.9%	-1.9%	-5.5%	-5.8%	-4.8%	+3.1%
2021	+11.5%	-3.9%	-7.4%	-4.7%	-14.5%	-13.2%	-10.5%	-7.0%	-8.9%	-12.3%	+2.3%	+1.1%
Misdemeanor												
2018	+12.8%	+2.1%	-4.0%	+4.7%	-7.5%	+13.0%	-1.4%	+1.5%	+8.7%	-9.7%	-14.7%	-9.8%
2019	+5.7%	-3.6%	-13.1%	+15.1%	-0.6%	-13.2%	+5.8%	+4.8%	+7.8%	+5.5%	+4.6%	-2.2%
2020	+1.1%	+7.8%	-1.0%	+14.1%	-0.9%	+6.5%	-17.3%	+2.1%	-8.7%	-10.7%	-6.3%	+2.7%
2021	+20.3%	-10.9%	+0.0%	-11.6%	-24.1%	-8.2%	-14.9%	0.0%	-1.2%	-14.1%	0.0%	-2.7%

The pending caseload is total number of active cases, excluding cases on warrant/appeal/stay status.

Table 3-C. Age (days) of Pending Juvenile Offender Cases

King County Superior Court

	Jan	Feb	Mar	Apr	May	Jun	Jul	Aug	Sep	Oct	Nov	Dec
All Cases												
2020: # of Pending Cases	655	650	654	728	724	756	690	684	645	602	571	570
Median Age (days)	140	130	151	148	160	167	191	207	211	234	231	241
# of cases within 0 - 2 mo.	194	203	143	161	146	142	124	77	109	86	63	95
# of cases within 3 - 4 mo.	109	104	150	151	115	138	105	121	98	67	97	66
# of cases within 5 - 6 mo.	91	88	77	93	131	129	101	97	88	89	64	55
# of cases within 7 - 9 mo.	107	105	106	105	101	107	108	131	108	102	92	108
# of cases > 9 mo.	154	150	178	218	231	240	252	258	242	258	255	246
2021: # of Pending Cases	638	601	572	530	445	396	353	338	319	283	286	286
Median Age (days)	223	219	226	240	229	254	243	258	275	284	269	241
# of cases within 0 - 2 mo.	136	97	99	79	60	54	47	46	44	41	51	50
# of cases within 3 - 4 mo.	66	100	94	69	70	49	41	43	39	38	32	37
# of cases within 5 - 6 mo.	81	61	45	72	64	43	49	30	27	32	32	29
# of cases within 7 - 9 mo.	85	87	77	70	58	59	53	56	46	27	28	35
# of cases > 9 mo.	270	256	257	240	193	191	163	163	163	145	143	135
Felony												
2020: # of Pending Cases	405	386	393	435	433	454	427	419	396	373	355	366
Median Age (days)	133	127	144	148	159	161	184	195	197	201	215	206
# of cases within 0 - 2 mo.	123	118	88	102	92	87	74	52	69	59	45	63
# of cases within 3 - 4 mo.	71	69	89	85	73	88	67	73	66	45	62	50
# of cases within 5 - 6 mo.	55	55	53	60	74	77	69	67	54	59	49	43
# of cases within 7 - 9 mo.	65	61	66	68	66	66	72	84	75	69	60	73
# of cases > 9 mo.	91	83	97	120	128	136	145	143	132	141	139	137
2021: # of Pending Cases	408	392	363	346	296	257	230	214	195	171	175	177
Median Age (days)	194	181	202	206	176	198	192	204	217	229	203	199
# of cases within 0 - 2 mo.	91	78	74	53	45	41	32	32	28	25	36	38
# of cases within 3 - 4 mo.	48	68	63	60	58	35	35	36	28	25	22	24
# of cases within 5 - 6 mo.	58	47	33	48	47	41	43	23	24	26	21	21
# of cases within 7 - 9 mo.	57	57	53	50	43	40	37	45	38	24	25	28
# of cases > 9 mo.	154	142	140	135	103	100	83	78	77	71	71	66
Misdemeanor												
2020: # of Pending Cases	180	194	192	219	217	231	191	195	178	159	149	153
Median Age (days)	113	86	98	113	139	145	161	192	177	208	231	226
# of cases within 0 - 2 mo.	66	82	51	53	48	51	44	24	36	26	18	32
# of cases within 3 - 4 mo.	29	28	56	63	39	46	35	40	27	17	28	16
# of cases within 5 - 6 mo.	26	20	16	27	52	49	27	26	30	26	12	12
# of cases within 7 - 9 mo.	26	31	31	25	23	30	31	41	27	27	27	34
# of cases > 9 mo.	33	33	38	51	55	55	54	64	58	63	64	59
2021: # of Pending Cases	184	164	164	145	110	101	86	86	85	73	73	71
Median Age (days)	209	225	227	249	251	282	268	295	301	300	239	193
# of cases within 0 - 2 mo.	45	19	25	26	15	13	15	13	14	16	15	12
# of cases within 3 - 4 mo.	18	32	31	9	12	14	6	7	11	11	9	13
# of cases within 5 - 6 mo.	23	14	12	24	17	2	6	7	3	6	11	7
# of cases within 7 - 9 mo.	27	30	24	20	15	19	16	11	8	3	3	7
# of cases > 9 mo.	71	69	72	66	51	53	43	48	49	37	35	32

Age = time between filing and the end of the reporting month. Suspense time on warrant, appeal or stay status is excluded.