

King County Superior Court  
Quarterly Statistical Report

First Quarter 2012

Department of Judicial Administration  
Prepared by: Shiquan Liao, Ph.D., Statistician

*Release Date: April 20, 2012*

**Report #: QTR-2012-1**

Table 1. Year-to-Date Filing Activity

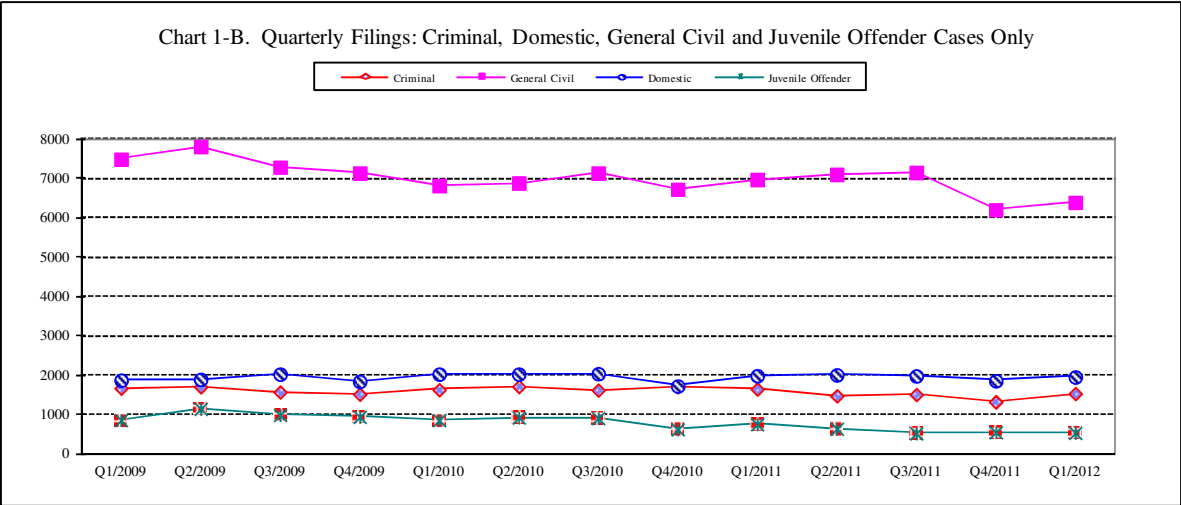
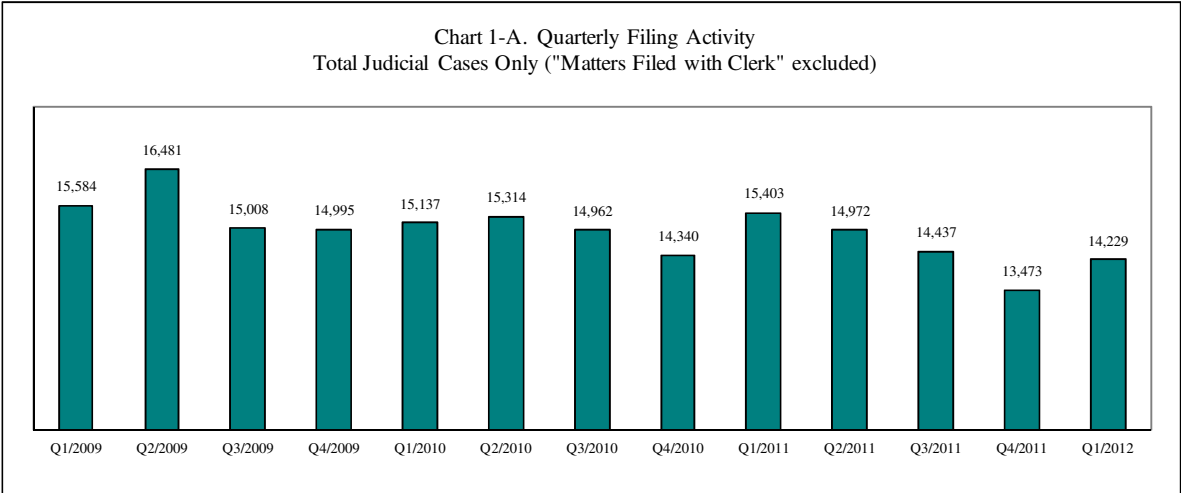
King County Superior Court

Reporting Category	Year-to-Date (Jan 1 to Mar 31) and Annual Filing Activity <sup>(1)</sup>					2011-2012 change (+ means "increase")		% of 2012 Total Filing <sup>(2)</sup>
	2008	2009	2010	2011	2012	Cases	Percentage	
<b>Total (incl. RALJ)</b>								
Year-to-Date Filing	15504	15584	15137	15403	14229	-1174	-7.6%	
Annual Filing	62018	62148	59798	58337				
<b>Criminal (excl. RALJ)</b>								
Year-to-Date Filing	2298	1675	1638	1655	1538	-117	-7.1%	10.8%
Annual Filing	8667	6498	6691	5986				
<b>General Civil (excl. Asbestos)</b>								
Year-to-Date Filing	6397	7499	6825	6984	6400	-584	-8.4%	45.0%
Annual Filing	27509	29789	27603	27499				
<b>Asbestos Cases (civil) <sup>(3)</sup></b>								
Year-to-Date Filing	12	5	5	9	7	-2	-22.2%	0.0%
Annual Filing	68	32	29	43				
<b>Domestic</b>								
Year-to-Date Filing	1785	1880	2034	1993	1961	-32	-1.6%	13.8%
Annual Filing	7254	7673	7850	7865				
<b>Probate</b>								
Year-to-Date Filing	1525	1270	1275	1490	1405	-85	-6.0%	9.9%
Annual Filing	5373	5110	5203	5417				
<b>Guardianship</b>								
Year-to-Date Filing	212	228	221	204	204	+0	0.0%	1.4%
Annual Filing	901	841	893	837				
<b>Adoption</b>								
Year-to-Date Filing	196	177	173	163	119	-44	-27.0%	0.8%
Annual Filing	772	685	686	688				
<b>Paternity</b>								
Year-to-Date Filing	303	237	332	264	334	+70	+26.5%	2.3%
Annual Filing	1147	1233	1189	1039				
<b>Mental Illness</b>								
Year-to-Date Filing	613	644	730	827	888	+61	+7.4%	6.2%
Annual Filing	2420	2727	3059	3506				
<b>Juvenile Dependency</b>								
Year-to-Date Filing	227	250	280	288	255	-33	-11.5%	1.8%
Annual Filing	888	903	1038	1060				
<b>Juvenile ARY/CHINS</b>								
Year-to-Date Filing	124	89	108	89	70	-19	-21.3%	0.5%
Annual Filing	417	341	347	303				
<b>Juvenile Truancy</b>								
Year-to-Date Filing	840	714	595	606	451	-155	-25.6%	3.2%
Annual Filing	2512	2083	1614	1350				
<b>Juvenile Offender</b>								
Year-to-Date Filing	899	865	862	762	538	-224	-29.4%	3.8%
Annual Filing	3803	3967	3356	2496				
<b>Criminal RALJ</b>								
Year-to-Date Filing	54	35	41	54	47	-7	-13.0%	0.3%
Annual Filing	214	180	176	191				
<b>Civil RALJ</b>								
Year-to-Date Filing	19	16	18	15	12	-3	-20.0%	0.1%
Annual Filing	73	86	64	57				
<b>Matters Filed with Clerk <sup>(4)</sup></b>								
Year-to-Date Filing	3214	3569	3782	3741	3825	+84	+2.2%	
Annual Filing	13881	14662	15586	14799				

(1) New filings only (based on filing date), excluding re-opened cases (unable to count), and reflecting all documents received by 04/15/2012.

(2) New filings of each reporting category as percentage of "Year-to-Date Filing".

(3) "Matters Filed with Clerk" and "Additional Filings with Clerk" are not included in the "Total".



\* Note: "General Civil" is specifically defined in this report. The category of "General Civil" does **not** include the following case types: domestic, probate, guardianship, adoption, paternity, mental illness, juvenile cases (dependency, at-risk youth, child-in-need of service, civil RALJ, and tax filings that don't require judicial resources ("matters filed with clerk"). Please check the Appendix for the cause codes in the "General Civil" category.

Table 1-A. Post-Resolution Modifications (Domestic and Paternity Cases)

*Based on Tracks Opened After Original Resolution Date*

		2010Q1			2010Q2			2010Q3			2010Q4			Year 2010		
Location	Case Type	DMOD	DTBA	Total	DMOD	DTBA	Total	DMOD	DTBA	Total	DMOD	DTBA	Total	DMOD	DTBA	Total
KNT	Domestic	134	75	209	155	86	241	153	69	222	117	53	170	559	283	842
	Paternity	20	20	40	11	19	30	24	13	37	20	10	30	75	62	137
<b>KNT Total</b>		<b>154</b>	<b>95</b>	<b>249</b>	<b>166</b>	<b>105</b>	<b>271</b>	<b>177</b>	<b>82</b>	<b>259</b>	<b>137</b>	<b>63</b>	<b>200</b>	<b>634</b>	<b>345</b>	<b>979</b>
SEA	Domestic	116	79	195	142	105	247	133	71	204	116	77	193	507	332	839
	Paternity	16	13	29	16	23	39	22	19	41	17	20	37	71	75	146
<b>SEA Total</b>		<b>132</b>	<b>92</b>	<b>224</b>	<b>158</b>	<b>128</b>	<b>286</b>	<b>155</b>	<b>90</b>	<b>245</b>	<b>133</b>	<b>97</b>	<b>230</b>	<b>578</b>	<b>407</b>	<b>985</b>
<b>KNT/SEA Total</b>		<b>286</b>	<b>187</b>	<b>473</b>	<b>324</b>	<b>233</b>	<b>557</b>	<b>332</b>	<b>172</b>	<b>504</b>	<b>270</b>	<b>160</b>	<b>430</b>	<b>1212</b>	<b>752</b>	<b>1964</b>
		2011Q1			2011Q2			2011Q3			2011Q4			Year 2011		
Location	Case Type	DMOD	DTBA	Total	DMOD	DTBA	Total	DMOD	DTBA	Total	DMOD	DTBA	Total	DMOD	DTBA	Total
KNT	Domestic	151	65	216	165	76	241	135	54	189	150	67	217	601	262	863
	Paternity	22	6	28	23	10	33	20	3	23	18	3	21	83	22	105
<b>KNT Total</b>		<b>173</b>	<b>71</b>	<b>244</b>	<b>188</b>	<b>86</b>	<b>274</b>	<b>155</b>	<b>57</b>	<b>212</b>	<b>168</b>	<b>70</b>	<b>238</b>	<b>684</b>	<b>284</b>	<b>968</b>
SEA	Domestic	118	75	193	151	106	257	143	75	218	155	76	231	567	332	899
	Paternity	19	19	38	17	23	40	19	30	49	7	17	24	62	89	151
<b>SEA Total</b>		<b>137</b>	<b>94</b>	<b>231</b>	<b>168</b>	<b>129</b>	<b>297</b>	<b>162</b>	<b>105</b>	<b>267</b>	<b>162</b>	<b>93</b>	<b>255</b>	<b>629</b>	<b>421</b>	<b>1050</b>
<b>KNT/SEA Total</b>		<b>310</b>	<b>165</b>	<b>475</b>	<b>356</b>	<b>215</b>	<b>571</b>	<b>317</b>	<b>162</b>	<b>479</b>	<b>330</b>	<b>163</b>	<b>493</b>	<b>1313</b>	<b>705</b>	<b>2018</b>
		2012Q1			2012Q2			2012Q3			2012Q4			Year 2012		
Location	Case Type	DMOD	DTBA	Total	DMOD	DTBA	Total	DMOD	DTBA	Total	DMOD	DTBA	Total	DMOD	DTBA	Total
KNT	Domestic	183	55	238										183	55	238
	Paternity	15	4	19										15	4	19
<b>KNT Total</b>		<b>198</b>	<b>59</b>	<b>257</b>										<b>198</b>	<b>59</b>	<b>257</b>
SEA	Domestic	153	68	221										153	68	221
	Paternity	6	18	24										6	18	24
<b>SEA Total</b>		<b>159</b>	<b>86</b>	<b>245</b>										<b>159</b>	<b>86</b>	<b>245</b>
<b>KNT/SEA Total</b>		<b>357</b>	<b>145</b>	<b>502</b>										<b>357</b>	<b>145</b>	<b>502</b>

\* DMOD = parenting plan modification track; DTBA = support modification track.

Table 2. Number of Cases Resolved and Resolution Category (%)

## King County Superior Court

Reporting Category	Q2/10	Q3/10	Q4/10	Q1/11	Q2/11	Q3/11	Q4/11	Q1/12*
<b>Total Resolutions (excl. "Matters Filed with Clerk")</b>	<b>16358</b>	<b>16552</b>	<b>14957</b>	<b>15842</b>	<b>16070</b>	<b>15396</b>	<b>14291</b>	<b>13683</b>
<b>Criminal (excl. RALJ): # Resolved</b>	<b>1649</b>	<b>1712</b>	<b>1500</b>	<b>1680</b>	<b>1599</b>	<b>1522</b>	<b>1466</b>	<b>1309</b>
Resolved by Jury Trial	3.9%	4.1%	4.2%	4.8%	3.8%	4.6%	4.1%	5.0%
Resolved by Non-Jury Trial	2.8%	1.5%	1.2%	1.6%	1.3%	1.1%	0.6%	1.0%
Resolved by Guilty Plea	77.2%	79.4%	80.4%	76.3%	78.4%	78.1%	78.4%	78.2%
Dismissal	16.0%	14.8%	13.6%	16.8%	16.1%	15.6%	16.6%	15.4%
Others	0.2%	0.3%	0.6%	0.5%	0.4%	0.6%	0.3%	0.3%
<b>General Civil: # Resolved</b>	<b>7680</b>	<b>7610</b>	<b>7280</b>	<b>7652</b>	<b>7866</b>	<b>7293</b>	<b>6905</b>	<b>6502</b>
Resolved by Jury Trial	0.3%	0.5%	0.5%	0.5%	0.4%	0.4%	0.5%	0.5%
Resolved by Non-Jury Trial	0.3%	0.5%	0.4%	0.4%	0.4%	0.3%	0.3%	0.4%
Summary Judgment	2.3%	2.0%	2.3%	1.7%	1.8%	1.7%	1.9%	2.3%
Default/ Uncontested	40.2%	41.7%	39.6%	38.9%	42.2%	43.6%	40.5%	42.5%
Arbitration	1.7%	1.9%	2.1%	1.8%	2.0%	2.3%	2.5%	2.3%
Settlement/Dismissal	51.1%	50.3%	50.9%	52.5%	49.5%	48.4%	50.1%	48.7%
Closure by Clerk	3.0%	2.2%	3.5%	3.4%	2.8%	2.6%	3.6%	2.3%
Others	1.1%	0.9%	0.8%	0.9%	0.8%	0.7%	0.7%	1.0%
<b>Asbestos Cases (civil): # Resolved</b>	<b>26</b>	<b>11</b>	<b>10</b>	<b>4</b>	<b>21</b>	<b>8</b>	<b>18</b>	<b>12</b>
Resolved by Jury Trial	0.0%	0.0%	10.0%	0.0%	0.0%	0.0%	5.6%	0.0%
Resolved by Non-Jury Trial	0.0%	0.0%	0.0%	0.0%	0.0%	0.0%	0.0%	0.0%
Summary Judgment	3.9%	9.1%	10.0%	25.0%	0.0%	0.0%	5.6%	0.0%
Default/ Uncontested	0.0%	9.1%	30.0%	25.0%	4.8%	25.0%	0.0%	25.0%
Arbitration	0.0%	0.0%	0.0%	0.0%	0.0%	0.0%	0.0%	0.0%
Settlement/Dismissal	96.2%	81.8%	40.0%	50.0%	95.2%	75.0%	88.9%	75.0%
Closure by Clerk	0.0%	0.0%	0.0%	0.0%	0.0%	0.0%	0.0%	0.0%
Others	0.0%	0.0%	10.0%	0.0%	0.0%	0.0%	0.0%	0.0%
<b>Domestic: # Resolved</b>	<b>2021</b>	<b>2030</b>	<b>1966</b>	<b>1991</b>	<b>2002</b>	<b>2004</b>	<b>2024</b>	<b>1838</b>
Resolved by Trial	4.8%	4.0%	4.7%	4.4%	4.9%	3.5%	3.7%	4.2%
Default/ Uncontested	8.8%	9.8%	7.9%	8.4%	9.5%	9.8%	9.0%	8.6%
Settlement /Dismissal	85.3%	84.8%	85.0%	86.0%	84.4%	85.1%	85.7%	85.6%
Closure by Clerk	0.7%	0.8%	1.8%	0.7%	0.8%	1.3%	1.5%	1.0%
Others	0.5%	0.6%	0.6%	0.5%	0.5%	0.3%	0.1%	0.7%
<b>Probate: # Resolved</b>	<b>1348</b>	<b>1356</b>	<b>1274</b>	<b>1495</b>	<b>1497</b>	<b>1265</b>	<b>1200</b>	<b>1355</b>
Personal Rep. Appointed	74.4%	72.6%	74.2%	72.2%	71.1%	72.2%	72.5%	72.3%
Dismissal	3.6%	2.7%	2.8%	2.1%	3.3%	2.3%	2.56%	2.2%
Closure by Clerk	0.2%	0.2%	0.6%	0.2%	0.0%	0.1%	0.1%	0.0%
Others	21.7%	24.6%	22.5%	25.5%	25.5%	25.5%	24.8%	25.5%
<b>Guardianship: # Resolved</b>	<b>256</b>	<b>241</b>	<b>225</b>	<b>207</b>	<b>203</b>	<b>222</b>	<b>190</b>	<b>180</b>
Guardian Appointed	51.2%	60.6%	60.4%	53.1%	55.2%	47.8%	52.6%	52.2%
Dismissal	48.8%	39.0%	38.7%	45.9%	44.3%	52.3%	46.8%	46.7%
Closure by Clerk	0.0%	0.0%	0.0%	0.0%	0.0%	0.0%	0.0%	0.0%
Others	0.0%	0.4%	0.9%	1.0%	0.5%	0.0%	0.5%	1.1%
<b>Adoption: # Resolved</b>	<b>196</b>	<b>164</b>	<b>186</b>	<b>154</b>	<b>173</b>	<b>151</b>	<b>237</b>	<b>83</b>
Resolved by Trial	0.0%	0.6%	0.0%	0.0%	0.0%	0.7%	0.0%	0.0%
Uncontested	2.6%	3.7%	0.5%	9.7%	2.3%	2.0%	3.0%	9.6%
Settlement /Dismissal	96.9%	95.7%	98.9%	88.3%	94.8%	96.7%	96.6%	90.4%
Closure by Clerk	0.0%	0.0%	0.0%	0.0%	1.2%	0.7%	0.4%	0.0%
Others	0.5%	0.0%	0.5%	2.0%	1.2%	0.0%	0.0%	0.0%
<b>Paternity: # Resolved</b>	<b>374</b>	<b>332</b>	<b>352</b>	<b>332</b>	<b>250</b>	<b>270</b>	<b>256</b>	<b>257</b>
Resolved by Trial	2.1%	0.9%	0.6%	1.2%	0.4%	1.1%	0.4%	0.4%
Summary Judgment	36.6%	42.8%	50.3%	45.2%	40.0%	42.6%	43.0%	36.6%
Default/ Uncontested	31.8%	23.8%	21.9%	21.4%	21.2%	21.9%	23.1%	28.0%
Settlement/Dismissal	29.4%	32.5%	27.3%	32.2%	38.0%	34.1%	33.2%	34.6%
Closure by Clerk	0.0%	0.0%	0.0%	0.0%	0.0%	0.4%	0.4%	0.4%
Others	0.0%	0.0%	0.0%	0.0%	0.4%	0.0%	0.0%	0.0%

Reflecting all documents received by 04/15/2012.

Table 2 (cont.). Number of Cases Resolved and Resolution Category (%)

## King County Superior Court

Reporting Category	Q2/10	Q3/10	Q4/10	Q1/11	Q2/11	Q3/11	Q4/11	Q1/12*
<b>Mental Illness: # Resolved</b>	<b>813</b>	<b>801</b>	<b>738</b>	<b>829</b>	<b>865</b>	<b>841</b>	<b>895</b>	<b>865</b>
Court Decision to Commit	65.3%	69.5%	71.3%	65.9%	67.5%	70.1%	64.0%	74.2%
Closed by Court	0.0%	0.1%	0.0%	0.0%	0.0%	0.0%	0.0%	0.0%
Dismissal	27.1%	21.7%	21.1%	19.8%	22.1%	23.2%	21.7%	15.4%
Others	7.6%	8.6%	7.6%	14.4%	10.4%	6.4%	14.3%	10.4%
<b>Juvenile Dependency: # Resolved</b>	<b>284</b>	<b>336</b>	<b>217</b>	<b>305</b>	<b>227</b>	<b>277</b>	<b>272</b>	<b>228</b>
Finding of Dependency	58.8%	58.0%	58.1%	72.5%	58.6%	74.0%	68.8%	70.2%
Dismissal	40.1%	41.7%	41.9%	26.9%	40.5%	26.0%	30.9%	28.5%
Others	1.1%	0.3%	0.0%	0.7%	0.9%	0.0%	0.4%	1.3%
<b>Juvenile ARY/CHINS: # Resolved</b>	<b>99</b>	<b>88</b>	<b>165</b>	<b>92</b>	<b>82</b>	<b>76</b>	<b>58</b>	<b>67</b>
Approve of Petition	30.3%	36.4%	55.8%	41.3%	40.2%	46.1%	53.5%	56.7%
Dismissal	69.7%	63.6%	44.3%	58.7%	59.8%	54.0%	43.1%	43.3%
Others	0.0%	0.0%	0.0%	0.0%	0.0%	0.0%	3.5%	0.0%
<b>Juvenile Truancy: # Resolved</b>	<b>751</b>	<b>1061</b>	<b>147</b>	<b>282</b>	<b>514</b>	<b>743</b>	<b>219</b>	<b>282</b>
Approve of Petition	4.8%	0.0%	15.0%	26.6%	16.7%	0.0%	5.5%	21.3%
Dismissal	95.2%	99.8%	83.0%	73.4%	82.5%	38.2%	94.5%	78.4%
Others	0.0%	0.2%	2.0%	0.0%	0.8%	61.8%	0.0%	0.4%
<b>Juvenile Offender: # Resolved</b>	<b>789</b>	<b>736</b>	<b>815</b>	<b>754</b>	<b>747</b>	<b>664</b>	<b>492</b>	<b>651</b>
Resolved by Trial (Fact Finding)	5.7%	9.0%	6.4%	5.6%	7.1%	3.3%	5.7%	7.8%
Resolved by Guilty Plea	38.0%	43.9%	33.9%	40.2%	39.2%	35.2%	38.0%	40.6%
Dismissal	53.0%	44.6%	56.4%	49.7%	45.5%	42.3%	39.0%	36.9%
Deferred Disposition (DDSP)	NA	NA	NA	NA	4.7%	15.5%	11.8%	11.7%
Others (including Deferred Prosecution)	3.3%	2.6%	3.3%	4.5%	3.5%	3.6%	5.5%	3.1%
<b>Criminal RALJ: # Resolved</b>	<b>47</b>	<b>56</b>	<b>61</b>	<b>50</b>	<b>46</b>	<b>47</b>	<b>46</b>	<b>46</b>
RALJ Decision	70.2%	64.3%	57.4%	56.0%	73.9%	70.2%	80.4%	73.9%
Dismissal	23.4%	26.8%	39.3%	28.0%	19.6%	27.7%	15.2%	26.1%
Others	6.4%	8.9%	3.3%	16.0%	6.5%	2.1%	4.4%	0.0%
<b>Civil RALJ: # Resolved</b>	<b>25</b>	<b>18</b>	<b>21</b>	<b>15</b>	<b>13</b>	<b>13</b>	<b>13</b>	<b>8</b>
RALJ Decision	48.0%	55.6%	47.6%	40.0%	53.9%	69.2%	23.1%	62.5%
Dismissal	44.0%	33.3%	47.6%	60.0%	46.1%	30.8%	38.5%	25.0%
Others	8.0%	11.1%	4.8%	0.0%	0.0%	0.0%	38.5%	12.5%

\* Reflecting all documents received by 04/15/2012.

Chart 2-A. Quarterly Resolutions  
Total Judicial Cases Only ("Matters Filed with Clerk" excluded)

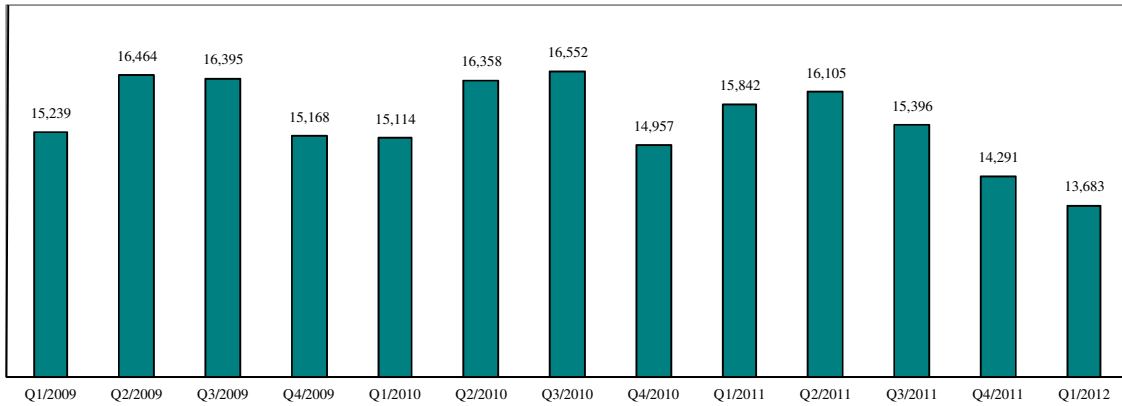
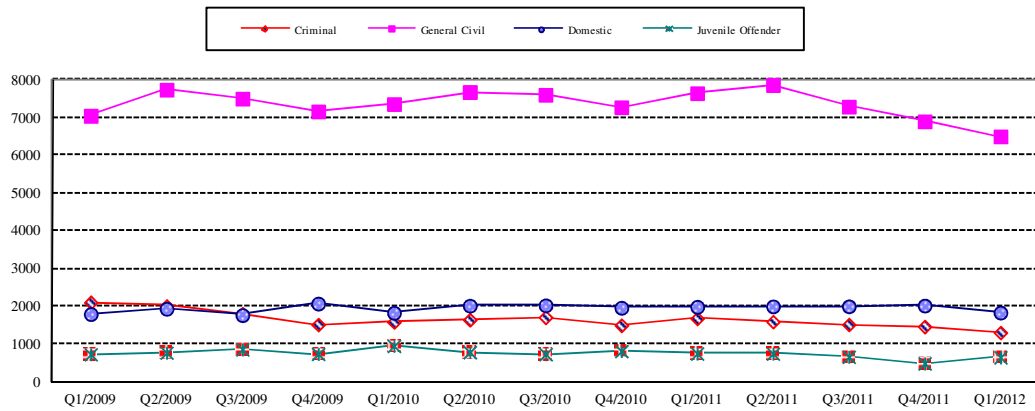


Chart 2-B. Quarterly Resolutions: Criminal, Dmestic, General Civil and Juvenile Offender Cases Only



\* Note: "General Civil" is specifically defined in this report. The category of "General Civil" does **not** include the following case types: domestic, probate, guardianship, adoption, paternity, mental illness, juvenile cases (dependency, at-risk youth, child-in-need of service), civil RALJ, and tax filings that don't require judicial resources ("matters filed with clerk"). Please check the Appendix for the cause codes in the "General Civil" category.

Table 3. Age of Resolved Cases  
King County Superior Court

Reporting Category	Age of Cases at Resolution							
	Q2/10	Q3/10	Q4/10	Q1/11	Q2/11	Q3/11	Q4/11	Q1/12*
<b>Criminal (excl. RALJ)</b>								
Age (days)								
50% Cases Resolved by Day	95	97	89	105	93	105	105	109
90% Cases Resolved by Day	367	345	298	357	302	361	347	380
98% Cases Resolved by Day	946	945	811	867	777	1097	722	752
<b>Comparison with Court Standard of</b>								
90% in 4 months	60%	61%	61%	57%	63%	56%	56%	55%
98% in 6 months	74%	77%	78%	73%	77%	72%	72%	69%
100% in 9 months	84%	87%	88%	85%	88%	84%	85%	83%
<b>General Civil <sup>(1)</sup></b>								
Age (days)								
50% Cases Resolved by Day	35	26	28	28	22	26	34	28
90% Cases Resolved by Day	525	476	518	518	494	491	502	481
98% Cases Resolved by Day	777	667	742	713	702	672	705	674
<b>Comparison with Court Standard of</b>								
90% in 12 months	82%	87%	82%	84%	85%	86%	83%	85%
98% in 18 months	92%	95%	92%	93%	94%	95%	93%	91%
100% in 24 months	97%	99%	98%	98%	98%	99%	98%	99%
<b>Domestic</b>								
Age (days)								
50% Cases Resolved by Day	158	150	169	182	166	162	158	172
90% Cases Resolved by Day	370	375	424	394	385	390	384	395
98% Cases Resolved by Day	591	581	600	579	599	2641	628	657
<b>Comparison with Court Standard of</b>								
90% in 8 months	67%	68%	65%	63%	64%	67%	69%	65%
98% in 10 months	75%	75%	74%	72%	73%	74%	76%	73%
100% in 14 months	94%	93%	90%	92%	91%	92%	92%	92%
<b>Probate</b>								
Age (days)								
50% Cases Resolved by Day	0	0	0	0	0	0	0	0
90% Cases Resolved by Day	13	16	6	15	15	12	6	4
98% Cases Resolved by Day	659	630	282	283	401	281	165	87
<b>Comparison with Court Standard of</b>								
90% in 8 months	95%	96%	97%	98%	97%	97%	98%	99%
98% in 18 months	97%	97%	99%	99%	99%	99%	99%	99%
100% in 36 months	99%	99%	100%	99%	99%	100%	100%	100%
<b>Guardianship</b>								
Age (days)								
50% Cases Resolved by Day	62	62	61	64	63	62	60	75
90% Cases Resolved by Day	393	244	197	237	469	191	203	213
98% Cases Resolved by Day	1355	665	728	576	800	535	644	521
<b>Comparison with Court Standard of</b>								
90% in 8 months	87%	89%	92%	90%	82%	92%	92%	92%
98% in 18 months	94%	98%	99%	98%	94%	98%	97%	98%
100% in 36 months	97%	99%	100%	100%	99%	100%	100%	100%
<b>Adoption</b>								
Age (days)								
50% Cases Resolved by Day	36	58	48	67	46	70	31	75
90% Cases Resolved by Day	259	518	221	658	259	260	259	178
98% Cases Resolved by Day	647	890	556	1421	735	829	332	362
<b>Comparison with Court Standard of</b>								
90% in 8 months	90%	82%	90%	80%	89%	90%	88%	95%
98% in 10 months	94%	85%	92%	82%	91%	92%	89%	95%
100% in 14 months	95%	87%	96%	83%	95%	93%	93%	100%
<b>Paternity</b>								
Age (days)								
50% Cases Resolved by Day	170	161	169	160	121	128	117	134
90% Cases Resolved by Day	298	297	280	287	253	290	244	245
98% Cases Resolved by Day	505	444	447	435	346	441	441	470
<b>Comparison with Court Standard of</b>								
90% in 8 months	80%	79%	80%	84%	89%	85%	89%	89%
98% in 10 months	90%	90%	93%	91%	97%	92%	94%	93%
100% in 14 months	95%	97%	96%	98%	100%	97%	97%	96%



Table 3 (cont.) Age of Resolved Cases  
King County Superior Court

Reporting Category	Age of Cases at Resolution							
	Q2/10	Q3/10	Q4/10	Q1/11	Q2/11	Q3/11	Q4/11	Q1/12*
<b>Mental Illness**</b>								
Age (days)								
50% Cases Resolved by Day	3	3	2	3	3	2	3	3
90% Cases Resolved by Day	29	14	9	15	11	8	14	10
98% Cases Resolved by Day	356	346	22	324	29	16	449	81
<b>Juvenile Dependency</b>								
Age (days)								
50% Cases Resolved by Day	122	106	82	133	99	91	129	107
90% Cases Resolved by Day	1337	1029	759	495	470	329	573	328
98% Cases Resolved by Day	2906	3716	2187	1704	3421	648	1553	889
<b>Comparison with Court Standard of</b>								
90% in 8 months	68%	73%	81%	62%	82%	88%	75%	85%
98% in 10 months	71%	74%	83%	69%	84%	89%	77%	88%
100% in 14 months	74%	75%	87%	83%	88%	93%	86%	92%
<b>Juvenile ARY/CHINS</b>								
Age (days)								
50% Cases Resolved by Day	38	49	151	26	26	35	36	27
90% Cases Resolved by Day	262	242	342	257	226	310	231	111
98% Cases Resolved by Day	1585	300	1317	1037	330	644	646	199
<b>Comparison with Court Standard of</b>								
90% in 8 months	86%	88%	80%	87%	91%	93%	94%	98%
98% in 10 months	93%	98%	88%	91%	94%	94%	96%	99%
100% in 14 months	97%	100%	92%	98%	100%	96%	96%	100%
<b>Juvenile Truancy**</b>								
Age (days)								
50% Cases Resolved by Day	56	20	13	13	22	48	19	22
90% Cases Resolved by Day	1284	644	62	46	70	2401	204	77
98% Cases Resolved by Day	1640	1546	390	259	148	2775	282	228
<b>Juvenile Offender</b>								
Age (days)								
50% Cases Resolved by Day	61	59	68	72	69	78	69	75
90% Cases Resolved by Day	190	175	295	203	220	219	199	228
98% Cases Resolved by Day	647	408	1901	626	593	869	813	565
<b>Comparison with Court Standard of</b>								
90% in 4 months	80%	78%	75%	71%	79%	73%	74%	74%
98% in 6 months	89%	91%	84%	87%	86%	86%	88%	86%
100% in 9 months	94%	95%	89%	93%	93%	92%	89%	92%
<b>Criminal RALJ</b>								
Age (days)								
50% Cases Resolved by Day	294	272	252	224	245	257	253	244
90% Cases Resolved by Day	455	431	459	323	423	360	415	347
98% Cases Resolved by Day	616	590	669	758	834	427	784	373
<b>Comparison with Court Standard of</b>								
90% in 4 months	0%	5%	3%	20%	7%	13%	0%	2%
98% in 5 months	0%	5%	3%	22%	7%	13%	4%	4%
100% in 6 months	0%	7%	5%	26%	14%	15%	6%	4%
<b>Civil RALJ</b>								
Age (days)								
50% Cases Resolved by Day	171	163	165	172	163	163	179	170
90% Cases Resolved by Day	247	218	315	379	283	210	205	225
98% Cases Resolved by Day	325	245	399	504	612	247	210	225
<b>Comparison with Court Standard of</b>								
90% in 4 months	12%	22%	14%	20%	0%	15%	31%	13%
98% in 5 months	16%	33%	19%	67%	23%	23%	31%	13%
100% in 6 months	60%	72%	62%	73%	69%	85%	54%	76%

\* Reflecting all documents received by 04/15/2012.

\*\* No standard yet.

Table 4. Active Pending Caseload Statistics

King County Superior Court

Reporting Category	Q2/10	Q3/10	Q4/10	Q1/11	Q2/11	Q3/11	Q4/11	Q1/12*
<b>Total (incl. RALJ)</b>								
Previous Pending (+)	22982	22169	21682	21051	20676	20219	20411	19797
New Filing (+)	15314	14962	14340	15403	14972	14437	13473	14229
Resolved (-)	16358	16552	14957	15842	16070	15396	14291	13683
<b>End Pending</b>	<b>22169</b>	<b>21682</b>	<b>21051</b>	<b>20676</b>	<b>20219</b>	<b>20411</b>	<b>19797</b>	<b>20235</b>
<b>Resolution Rate**</b>	<b>1.068</b>	<b>1.106</b>	<b>1.043</b>	<b>1.023</b>	<b>1.073</b>	<b>1.066</b>	<b>1.061</b>	<b>0.962</b>
<b>Criminal (excl. RALJ)</b>								
Previous Pending (+)	2595	2837	2660	2791	2730	2671	2661	2549
New Filing (+)	1716	1630	1708	1655	1480	1518	1332	1538
Resolved (-)	1649	1712	1500	1680	1599	1522	1466	1309
<b>End Pending</b>	<b>2837</b>	<b>2660</b>	<b>2791</b>	<b>2730</b>	<b>2671</b>	<b>2661</b>	<b>2549</b>	<b>2715</b>
<b>Resolution Rate**</b>	<b>0.961</b>	<b>1.050</b>	<b>0.878</b>	<b>1.015</b>	<b>1.080</b>	<b>1.003</b>	<b>1.101</b>	<b>0.851</b>
<b>General Civil</b>								
Previous Pending (+)	10779	10117	10059	9883	9594	9279	9597	9153
New Filing (+)	6891	7148	6734	6984	7115	7160	6214	6400
Resolved (-)	7681	7610	7280	7652	7866	7293	6905	6502
<b>End Pending</b>	<b>10117</b>	<b>10059</b>	<b>9883</b>	<b>9594</b>	<b>9279</b>	<b>9597</b>	<b>9153</b>	<b>9243</b>
<b>Resolution Rate**</b>	<b>1.114</b>	<b>1.065</b>	<b>1.081</b>	<b>1.096</b>	<b>1.400</b>	<b>1.143</b>	<b>1.111</b>	<b>1.016</b>
<b>Asbestos Cases (civil) <sup>(1)</sup></b>								
Previous Pending (+)	91	83	95	86	91	86	90	85
New Filing (+)	6	11	3	9	15	7	8	7
Resolved (-)	26	11	10	4	21	8	18	12
<b>End Pending</b>	<b>83</b>	<b>95</b>	<b>86</b>	<b>91</b>	<b>86</b>	<b>90</b>	<b>85</b>	<b>81</b>
<b>Resolution Rate**</b>	<b>4.337</b>	<b>1.000</b>	<b>3.333</b>	<b>0.444</b>	<b>1.106</b>	<b>1.019</b>	<b>2.250</b>	<b>1.714</b>
<b>Domestic</b>								
Previous Pending (+)	4624	4650	4673	4453	4479	4532	4538	4421
New Filing (+)	2033	2045	1731	1993	2015	1988	1865	1961
Resolved (-)	2021	2030	1966	1991	2002	2004	2024	1838
<b>End Pending</b>	<b>4650</b>	<b>4673</b>	<b>4453</b>	<b>4479</b>	<b>4532</b>	<b>4538</b>	<b>4421</b>	<b>4556</b>
<b>Resolution Rate**</b>	<b>0.994</b>	<b>0.993</b>	<b>1.136</b>	<b>0.999</b>	<b>0.994</b>	<b>1.008</b>	<b>1.085</b>	<b>0.937</b>
<b>Probate</b>								
Previous Pending (+)	657	614	616	579	555	515	531	559
New Filing (+)	1333	1327	1268	1490	1462	1261	1204	1405
Resolved (-)	1348	1356	1274	1495	1497	1265	1200	1355
<b>End Pending</b>	<b>614</b>	<b>616</b>	<b>579</b>	<b>555</b>	<b>515</b>	<b>531</b>	<b>559</b>	<b>579</b>
<b>Resolution Rate**</b>	<b>1.011</b>	<b>1.022</b>	<b>1.005</b>	<b>1.003</b>	<b>1.024</b>	<b>1.003</b>	<b>0.997</b>	<b>0.964</b>
<b>Guardianship</b>								
Previous Pending (+)	308	277	269	248	242	250	250	261
New Filing (+)	236	227	207	204	209	220	203	204
Resolved (-)	256	241	225	207	203	222	190	180
<b>End Pending</b>	<b>277</b>	<b>269</b>	<b>248</b>	<b>242</b>	<b>250</b>	<b>250</b>	<b>261</b>	<b>276</b>
<b>Resolution Rate**</b>	<b>1.085</b>	<b>1.062</b>	<b>1.087</b>	<b>1.015</b>	<b>0.971</b>	<b>1.009</b>	<b>0.936</b>	<b>0.882</b>
<b>Adoption</b>								
Previous Pending (+)	250	232	242	215	224	226	211	192
New Filing (+)	177	172	164	163	173	134	218	119
Resolved (-)	196	164	186	154	173	151	237	83
<b>End Pending</b>	<b>232</b>	<b>242</b>	<b>215</b>	<b>224</b>	<b>226</b>	<b>211</b>	<b>192</b>	<b>226</b>
<b>Resolution Rate**</b>	<b>1.107</b>	<b>0.953</b>	<b>1.134</b>	<b>0.945</b>	<b>1.000</b>	<b>1.127</b>	<b>1.087</b>	<b>0.697</b>
<b>Paternity</b>								
Previous Pending (+)	622	572	560	436	369	372	401	377
New Filing (+)	308	314	234	264	247	298	230	334
Resolved (-)	374	332	352	332	250	270	256	257
<b>End Pending</b>	<b>572</b>	<b>560</b>	<b>436</b>	<b>369</b>	<b>372</b>	<b>401</b>	<b>377</b>	<b>456</b>
<b>Resolution Rate**</b>	<b>1.214</b>	<b>1.057</b>	<b>1.504</b>	<b>1.258</b>	<b>1.012</b>	<b>0.906</b>	<b>1.113</b>	<b>0.769</b>

\* Reflecting all documents received by 04/15/2012.

\*\* A value of "Resolution Rate" less than one indicates the resolution pace is slower than the filing pace.

Table 4 (cont.) Active Pending Caseload Statistics  
King County Superior Court

Reporting Category		Q2/10	Q3/10	Q4/10	Q1/11	Q2/11	Q3/11	Q4/11	Q1/12*
<b>Mental Illness</b>									
Previous Pending	(+)	487	436	447	463	454	463	548	530
New Filing	(+)	769	805	754	827	873	926	878	888
Resolved	(-)	813	801	738	829	865	841	895	865
<b>End Pending</b>		<b>436</b>	<b>447</b>	<b>463</b>	<b>454</b>	<b>463</b>	<b>548</b>	<b>530</b>	<b>540</b>
<b>Resolution Rate**</b>		<b>1.057</b>	<b>0.995</b>	<b>0.979</b>	<b>1.002</b>	<b>0.991</b>	<b>0.908</b>	<b>1.019</b>	<b>0.974</b>
<b>Juvenile Dependency</b>									
Previous Pending	(+)	542	459	453	446	442	503	518	522
New Filing	(+)	264	236	259	288	271	261	240	255
Resolved	(-)	284	336	217	305	227	277	272	228
<b>End Pending</b>		<b>459</b>	<b>453</b>	<b>446</b>	<b>442</b>	<b>503</b>	<b>518</b>	<b>522</b>	<b>503</b>
<b>Resolution Rate**</b>		<b>1.076</b>	<b>1.424</b>	<b>0.838</b>	<b>1.059</b>	<b>0.838</b>	<b>1.061</b>	<b>1.133</b>	<b>0.894</b>
<b>Juvenile ARY/CHINS</b>									
Previous Pending	(+)	160	156	149	68	71	90	92	94
New Filing	(+)	105	68	65	89	90	62	62	70
Resolved	(-)	99	88	165	92	82	76	58	67
<b>End Pending</b>		<b>156</b>	<b>149</b>	<b>68</b>	<b>71</b>	<b>90</b>	<b>92</b>	<b>94</b>	<b>91</b>
<b>Resolution Rate**</b>		<b>0.943</b>	<b>1.294</b>	<b>2.538</b>	<b>1.034</b>	<b>0.911</b>	<b>1.226</b>	<b>0.935</b>	<b>0.957</b>
<b>Juvenile Truancy</b>									
Previous Pending	(+)	692	475	219	313	398	329	129	165
New Filing	(+)	474	14	529	606	311	16	414	451
Resolved	(-)	751	1061	147	282	514	763	219	282
<b>End Pending</b>		<b>475</b>	<b>219</b>	<b>313</b>	<b>398</b>	<b>329</b>	<b>129</b>	<b>165</b>	<b>145</b>
<b>Resolution Rate**</b>		<b>1.584</b>	<b>75.79</b>	<b>0.278</b>	<b>0.465</b>	<b>1.653</b>	<b>46.438</b>	<b>0.529</b>	<b>0.625</b>
<b>Juvenile Offender</b>									
Previous Pending	(+)	967	1055	1070	913	863	726	670	723
New Filing	(+)	932	914	625	762	642	527	554	538
Resolved	(-)	789	736	815	754	743	664	492	651
<b>End Pending</b>		<b>1055</b>	<b>1070</b>	<b>913</b>	<b>865</b>	<b>726</b>	<b>670</b>	<b>723</b>	<b>653</b>
<b>Resolution Rate**</b>		<b>0.847</b>	<b>0.805</b>	<b>1.304</b>	<b>0.990</b>	<b>1.164</b>	<b>1.260</b>	<b>0.888</b>	<b>1.210</b>
<b>Criminal RALJ</b>									
Previous Pending	(+)	160	161	141	126	131	144	145	132
New Filing	(+)	49	39	46	54	55	49	33	47
Resolved	(-)	47	56	61	50	46	47	46	46
<b>End Pending</b>		<b>161</b>	<b>141</b>	<b>126</b>	<b>131</b>	<b>144</b>	<b>145</b>	<b>132</b>	<b>132</b>
<b>Resolution Rate**</b>		<b>0.959</b>	<b>1.436</b>	<b>1.326</b>	<b>0.926</b>	<b>0.836</b>	<b>0.959</b>	<b>1.394</b>	<b>0.979</b>
<b>Civil RALJ</b>									
Previous Pending	(+)	48	45	39	31	31	33	30	34
New Filing	(+)	21	12	13	15	14	10	18	12
Resolved	(-)	25	18	21	15	13	13	13	8
<b>End Pending</b>		<b>45</b>	<b>39</b>	<b>31</b>	<b>31</b>	<b>33</b>	<b>30</b>	<b>34</b>	<b>39</b>
<b>Resolution Rate**</b>		<b>1.190</b>	<b>1.550</b>	<b>1.615</b>	<b>1.000</b>	<b>0.929</b>	<b>1.300</b>	<b>0.702</b>	<b>0.667</b>

\* Reflecting all documents received by 04/15/2012.

\*\* A value of "Resolution Rate" less than one indicates the resolution pace is slower than the filing pace.

Chart 4-A. Active Pending Caseload at Quarter End  
Total Judicial Cases Only ("Matters Filed with Clerk" excluded)

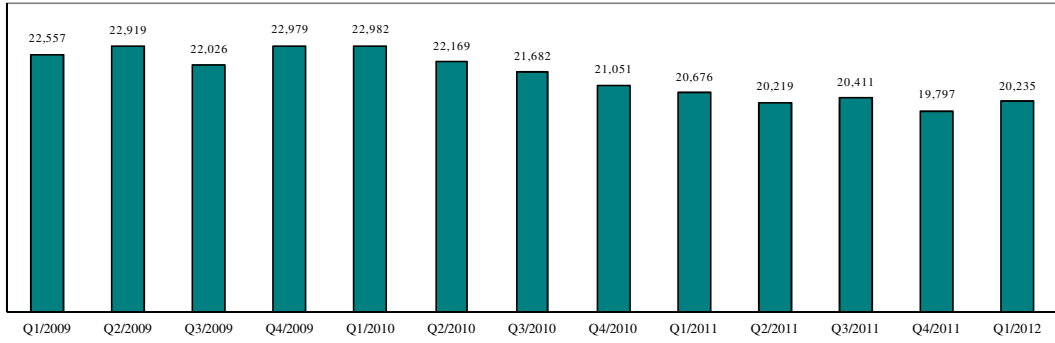


Chart 4-B. Active Pending Caseload at Quarter End: Domestic and General Civil Cases Only

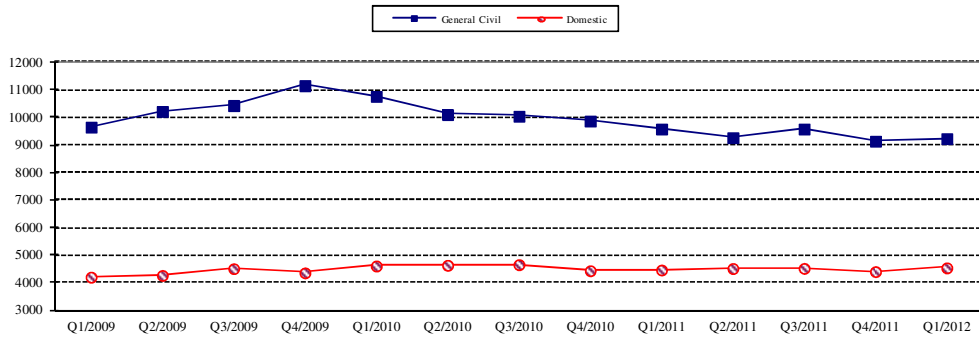
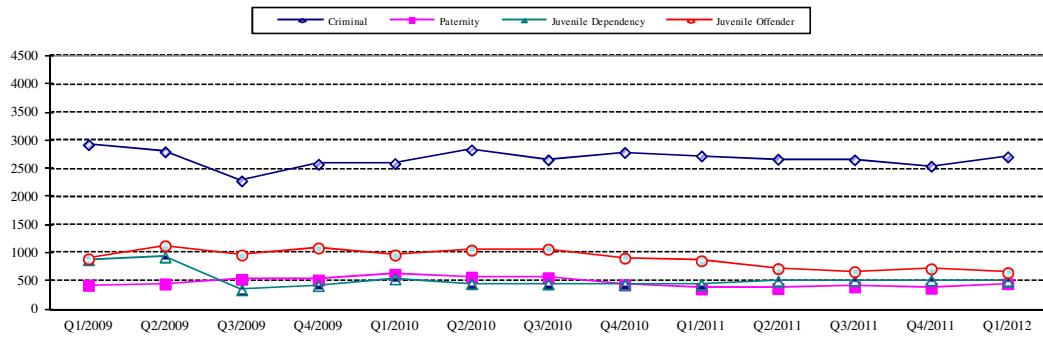


Chart 4-C. Active Pending Caseload at Quarter End:  
Criminal, Juvenile Offender, Paternity and Dependency Cases Only



\* Note: "General Civil" is specifically defined in this report. The category of "General Civil" does **not** include the following case types: domestic, probate, guardianship, adoption, paternity, mental illness, juvenile cases (dependency, at-risk youth, child-in-need of service), civil RALJ, and tax filings that don't require judicial resources ("matters filed with clerk"). Please check the Appendix for the cause codes in the "General Civil" category.

Table 5. Age of Pending Cases

King County Superior Court

Reporting Category	Age of Pending Cases and # of Cases in Each Age Interval							
	Q2/10	Q3/10	Q4/10	Q1/11	Q2/11	Q3/11	Q4/11	Q1/12*
<b>Criminal (excl. RALJ): # of Cases</b>	<b>2837</b>	<b>2660</b>	<b>2791</b>	<b>2730</b>	<b>2671</b>	<b>2661</b>	<b>2549</b>	<b>2715</b>
<b>Age (days)</b>								
Median (50 percentile)	79	100	95	95	106	109	116	103
95 percentile	687	711	694	596	570	577	601	648
<b># of Cases in Age Interval</b>								
0 - 60 days (0 - 2 months)	1208	933	962	997	876	854	814	980
61 - 120 days (3 - 4 months)	566	605	624	569	571	541	474	487
121 - 180 days (5 - 6 months)	326	366	374	383	396	348	343	348
181 - 270 days (7 - 9 months)	229	277	336	293	312	354	310	288
> 270 days (> 9 months)	508	479	459	488	516	564	608	612
<b>General Civil: # of Cases</b>	<b>10117</b>	<b>10059</b>	<b>9883</b>	<b>9594</b>	<b>9279</b>	<b>9597</b>	<b>9153</b>	<b>9243</b>
<b>Age (days)</b>								
Median (50 percentile)	163	176	177	171	164	166	173	173
95 percentile	548	571	575	567	575	576	578	597
<b># of Cases in Age Interval</b>								
0 - 120 days (0 - 4 months)	4123	3965	3776	3884	3724	3858	3508	3671
121 - 240 days (5 - 8 months)	2094	2143	2232	1964	1976	2191	2089	1903
241 - 360 days (9 - 12 months)	1625	1565	1545	1574	1463	1411	1548	1513
361 - 540 days (13 - 18 months)	1738	1726	1676	1582	1538	1514	1397	1479
541 - 720 days (19 - 24 months)	371	472	489	410	404	438	425	468
> 720 days (> 24 months)	166	188	165	180	174	185	186	209
<b>Asbestos Cases (civil)<sup>(1)</sup> : # of Cases</b>	<b>83</b>	<b>85</b>	<b>86</b>	<b>91</b>	<b>86</b>	<b>90</b>	<b>85</b>	<b>81</b>
<b>Age (days)</b>								
Median (50 percentile)	566	519	618	701	542	550	485	522
95 percentile	2239	2326	2418	2513	2599	2416	1802	1893
<b># of Cases in Age Interval</b>								
0 - 120 days (0 - 4 months)	10	15	16	10	23	13	7	7
121 - 240 days (5 - 8 months)	9	8	9	6	1	17	14	8
241 - 360 days (9 - 12 months)	13	7	7	6	7	3	16	16
361 - 540 days (13 - 18 months)	9	15	14	12	12	11	9	11
541 - 720 days (19 - 24 months)	9	7	8	14	10	11	12	9
> 720 days (> 24 months)	33	33	32	43	33	35	27	30
<b>Domestic: # of Cases</b>	<b>4650</b>	<b>4673</b>	<b>4453</b>	<b>4479</b>	<b>4532</b>	<b>4538</b>	<b>4421</b>	<b>4556</b>
<b>Age (days)</b>								
Median (50 percentile)	114	119	128	115	107	114	122	122
95 percentile	457	477	484	473	490	487	527	491
<b># of Cases in Age Interval</b>								
0 - 120 days (0 - 4 months)	2444	2354	2127	2312	2443	2379	2188	2258
121 - 240 days (5 - 8 months)	1149	1291	1245	1114	1056	1226	1250	1244
241 - 360 days (9 - 12 months)	652	570	688	629	603	514	579	653
361 - 540 days (13 - 18 months)	246	283	214	241	243	227	201	211
> 540 days (> 18 months)	159	175	179	183	187	192	212	190
<b>Probate: # of Cases</b>	<b>614</b>	<b>616</b>	<b>579</b>	<b>555</b>	<b>515</b>	<b>531</b>	<b>559</b>	<b>579</b>
<b>Age (days)</b>								
Median (50 percentile)	368	386	428	508	602	659	706	663
95 percentile	1655	1696	1836	1926	2040	2112	2201	2175
<b># of Cases in Age Interval</b>								
0 - 120 days (0 - 4 months)	114	108	95	109	99	100	104	119
121 - 240 days (5 - 8 months)	111	97	65	33	28	44	54	74
241 - 360 days (9 - 12 months)	79	90	80	47	31	20	37	38
361 - 540 days (13 - 18 months)	80	93	105	113	70	47	29	32
> 540 days (> 18 months)	230	228	234	253	287	320	335	316

Reflecting all documents received by 04/15/2012.

Table 5 (cont.). Age of Pending Cases

King County Superior Court

Reporting Category	Age of Pending Cases and # of Cases in Each Age Interval							
	Q2/10	Q3/10	Q4/10	Q1/11	Q2/11	Q3/11	Q4/11	Q1/12*
<b>Guardianship: # of Cases</b>	<b>277</b>	<b>269</b>	<b>248</b>	<b>242</b>	<b>250</b>	<b>250</b>	<b>261</b>	<b>276</b>
Age (days)								
Median (50 percentile)	63	63	71	71	67	60	80	60
95 percentile	609	632	613	679	617	652	507	550
<b># of Cases in Age Interval</b>								
0 - 120 days (0 - 4 months)	173	164	159	153	165	162	158	173
121 - 240 days (5 - 8 months)	35	41	21	33	39	38	46	48
241 - 360 days (9 - 12 months)	30	22	23	12	22	22	29	21
361 - 540 days (13 - 18 months)	22	23	26	24	8	13	16	20
> 540 days (> 18 months)	17	19	19	20	16	15	12	14
<b>Adoption: # of Cases</b>	<b>232</b>	<b>242</b>	<b>215</b>	<b>224</b>	<b>226</b>	<b>211</b>	<b>192</b>	<b>226</b>
Age (days)								
Median (50 percentile)	163	129	162	123	119	150	141	150
95 percentile	2724	2751	2963	2998	2900	2731	1619	1431
<b># of Cases in Age Interval</b>								
0 - 120 days (0 - 4 months)	100	116	88	108	113	99	92	102
121 - 240 days (5 - 8 months)	42	37	39	39	31	30	25	41
241 - 360 days (9 - 12 months)	16	26	17	19	24	22	23	19
361 - 540 days (13 - 18 months)	26	22	22	23	16	16	12	22
> 540 days (> 18 months)	48	41	49	35	42	44	40	42
<b>Paternity: # of Cases</b>	<b>572</b>	<b>560</b>	<b>436</b>	<b>369</b>	<b>372</b>	<b>401</b>	<b>377</b>	<b>456</b>
Age (days)								
Median (50 percentile)	99	102	107	85	90	74	94	59
95 percentile	328	345	288	277	312	269	277	264
<b># of Cases in Age Interval</b>								
0 - 120 days (0 - 4 months)	338	317	239	240	246	281	225	318
121 - 240 days (5 - 8 months)	159	193	152	102	88	96	119	106
241 - 360 days (9 - 12 months)	57	30	32	22	28	13	22	25
361 - 540 days (13 - 18 months)	18	19	12	3	7	10	9	6
> 540 days (> 18 months)	0	1	1	2	3	1	2	1
<b>Mental Illness: # of Cases</b>	<b>436</b>	<b>447</b>	<b>463</b>	<b>454</b>	<b>463</b>	<b>548</b>	<b>530</b>	<b>540</b>
Age (days)								
Median (50 percentile)	535	590	665	757	836	770	894	962
95 percentile	1785	1869	1957	2051	2138	2153	2246	2337
<b># of Cases in Age Interval</b>								
0 - 120 days (0 - 4 months)	74	82	63	76	62	124	100	95
121 - 240 days (5 - 8 months)	59	47	42	19	27	32	63	49
> 240 days (> 8 months)	303	318	358	359	374	392	367	396
<b>Juvenile Dependency: # of Cases</b>	<b>459</b>	<b>453</b>	<b>446</b>	<b>442</b>	<b>503</b>	<b>518</b>	<b>522</b>	<b>503</b>
Age (days)								
Median (50 percentile)	91	122	94	71	100	131	129	110
95 percentile	275	367	459	529	560	652	711	788
<b># of Cases in Age Interval</b>								
0 - 60 days (0 - 2 months)	166	148	142	204	182	166	148	156
61 - 120 days (3 - 4 months)	121	78	112	96	22	79	91	102
121 - 180 days (5 - 6 months)	83	47	39	36	90	61	69	58
181 - 270 days (7 - 9 months)	57	100	38	41	45	97	36	48
> 270 days (> 9 months)	32	80	115	65	77	115	178	139
<b>Juvenile ARY/CHINS: # of Cases</b>	<b>156</b>	<b>149</b>	<b>68</b>	<b>71</b>	<b>90</b>	<b>92</b>	<b>94</b>	<b>91</b>
Age (days)								
Median (50 percentile)	127	214	454	401	136	217	222	244
95 percentile	1582	1674	1782	1872	1947	2039	2131	2222
<b># of Cases in Age Interval</b>								
0 - 60 days (0 - 2 months)	40	30	18	26	29	19	26	29
61 - 120 days (3 - 4 months)	31	15	4	6	14	11	11	6
121 - 180 days (5 - 6 months)	26	19	0	2	6	15	8	6
181 - 270 days (7 - 9 months)	10	33	2	0	5	6	7	7
> 270 days (> 9 months)	49	52	44	37	36	41	42	43

\* Reflecting all documents received by 04/15/2012.

Table 5 (cont.). Age of Pending Cases

King County Superior Court

Reporting Category	Age of Pending Cases and # of Cases in Each Age Interval							
	Q2/10	Q3/10	Q4/10	Q1/11	Q2/11	Q3/11	Q4/11	Q1/12*
<b>Juvenile Truancy: # of Cases</b>	<b>475</b>	<b>219</b>	<b>313</b>	<b>398</b>	<b>329</b>	<b>129</b>	<b>165</b>	<b>145</b>
<b>Age (days)</b>								
Median (50 percentile)	398	1977	561	110	561	137	46	11
95 percentile	2290	2537	2587	2662	2768	298	381	472
<b># of Cases in Age Interval</b>								
0 - 60 days (0 - 2 months)	58	13	115	180	79	16	96	97
61 - 120 days (3 - 4 months)	79	2	5	24	38	5	4	4
121 - 180 days (5 - 6 months)	41	11	1	7	17	64	1	13
181 - 270 days (7 - 9 months)	20	14	9	0	11	32	41	0
> 270 days (> 9 months)	277	179	183	187	184	12	23	31
<b>Juvenile Offender: # of Cases</b>	<b>1055</b>	<b>1070</b>	<b>913</b>	<b>865</b>	<b>726</b>	<b>670</b>	<b>723</b>	<b>653</b>
<b>Age (days)</b>								
Median (50 percentile)	55	68	88	63	73	78	66	59
95 percentile	442	535	628	613	629	735	657	682
<b># of Cases in Age Interval</b>								
0 - 60 days (0 - 2 months)	555	500	343	429	315	289	344	332
61 - 120 days (3 - 4 months)	234	221	214	145	151	118	132	129
121 - 180 days (5 - 6 months)	70	117	111	55	70	62	59	50
181 - 270 days (7 - 9 months)	64	74	95	71	46	54	38	34
> 270 days (> 9 months)	132	158	150	165	144	147	150	108
<b>Criminal RALJ: # of Cases</b>	<b>161</b>	<b>141</b>	<b>126</b>	<b>131</b>	<b>144</b>	<b>145</b>	<b>132</b>	<b>132</b>
<b>Age (days)</b>								
Median (50 percentile)	153	151	128	140	139	136	162	141
95 percentile	479	508	373	351	311	368	334	424
<b># of Cases in Age Interval</b>								
0 - 60 days (0 - 2 months)	34	23	29	34	38	30	21	31
61 - 120 days (3 - 4 months)	29	13	27	26	28	33	25	25
121 - 180 days (5 - 6 months)	26	24	27	25	32	29	28	23
181 - 270 days (7 - 9 months)	34	22	31	30	25	35	36	31
> 270 days (> 9 months)	38	18	12	16	21	18	22	22
<b>Civil RALJ: # of Cases</b>	<b>45</b>	<b>39</b>	<b>31</b>	<b>31</b>	<b>33</b>	<b>30</b>	<b>34</b>	<b>39</b>
<b>Age (days)</b>								
Median (50 percentile)	102	140	157	107	94	152	120	125
95 percentile	356	1107	1199	1289	1380	1472	1564	1655
<b># of Cases in Age Interval</b>								
0 - 60 days (0 - 2 months)	15	5	10	12	7	7	10	7
61 - 120 days (3 - 4 months)	14	11	2	8	12	3	7	10
121 - 180 days (5 - 6 months)	7	12	9	3	6	12	5	7
181 - 270 days (7 - 9 months)	5	4	3	1	2	1	2	3
> 270 days (> 9 months)	4	7	7	7	6	7	10	12

\* Reflecting all documents received by 04/15/2012.

Table 6. Seattle vs. Regional Justice Center (KNT): Filing, Resolution, Pending Caseload (%)

King County Superior Court

	Q1/11		Q2/11		Q3/11		Q4/11		Q1/12	
	SEA	KNT	SEA	KNT	SEA	KNT	SEA	KNT	SEA	KNT
<b>Filings Total</b> <i>(excl. filings with clerk)</i>	<b>64%</b>	<b>36%</b>	<b>64%</b>	<b>36%</b>	<b>65%</b>	<b>35%</b>	<b>64%</b>	<b>36%</b>	<b>65%</b>	<b>35%</b>
Criminal (excl. RALJ)	56%	44%	55%	45%	56%	44%	54%	46%	59%	41%
General Civil (excl. RALJ)	58%	42%	57%	43%	59%	41%	58%	42%	59%	41%
Domestic	60%	40%	63%	37%	64%	36%	64%	36%	62%	38%
Probate	79%	21%	77%	23%	79%	21%	79%	21%	79%	21%
Guardianship	68%	32%	63%	37%	60%	40%	65%	35%	57%	43%
Adoption	74%	26%	75%	25%	81%	19%	73%	27%	81%	19%
Paternity	50%	50%	42%	58%	47%	53%	45%	55%	48%	52%
Mental Illness	100%	---	100%	---	100%	---	100%	---	100%	---
Juvenile Dependency	54%	46%	44%	56%	43%	57%	50%	50%	52%	48%
Juvenile ARY/CHINS	64%	36%	54%	46%	42%	58%	42%	58%	46%	54%
Juvenile Truancy	46%	54%	49%	51%	31%	69%	32%	68%	40%	60%
Juvenile Offender	100%	---	100%	---	100%	---	100%	---	100%	---
Criminal RALJ	93%	7%	95%	5%	92%	8%	88%	12%	96%	4%
Civil RALJ	87%	13%	79%	21%	90%	10%	89%	11%	67%	33%
<b>Resolution Total</b> <i>(excl. filings with clerk)</i>	<b>65%</b>	<b>35%</b>	<b>64%</b>	<b>36%</b>	<b>65%</b>	<b>35%</b>	<b>65%</b>	<b>35%</b>	<b>65%</b>	<b>35%</b>
Criminal (excl. RALJ)	63%	37%	61%	39%	60%	40%	59%	41%	56%	44%
General Civil (excl. RALJ)	57%	43%	57%	43%	59%	41%	59%	41%	59%	41%
Domestic	64%	36%	62%	38%	62%	38%	65%	35%	60%	40%
Probate	79%	21%	78%	22%	79%	21%	78%	22%	79%	21%
Guardianship	56%	44%	69%	31%	60%	40%	61%	39%	62%	38%
Adoption	75%	25%	70%	30%	80%	20%	70%	30%	81%	19%
Paternity	55%	45%	48%	52%	50%	50%	45%	55%	49%	51%
Mental Illness	100%	---	100%	---	100%	---	100%	---	100%	---
Juvenile Dependency	66%	34%	37%	63%	39%	61%	47%	53%	40%	60%
Juvenile ARY/CHINS	57%	43%	52%	48%	38%	62%	55%	45%	43%	57%
Juvenile Truancy	47%	53%	37%	63%	60%	40%	56%	44%	38%	62%
Juvenile Offender	100%	---	100%	---	100%	---	100%	---	100%	---
Criminal RALJ	80%	20%	98%	2%	92%	8%	96%	4%	94%	6%
Civil RALJ	100%	---	100%	---	77%	23%	100%	---	75%	25%
<b>Pending Total</b> <i>(excl. filings with clerk)</i>	<b>68%</b>	<b>32%</b>	<b>67%</b>	<b>33%</b>	<b>67%</b>	<b>33%</b>	<b>66%</b>	<b>34%</b>	<b>67%</b>	<b>33%</b>
Criminal (excl. RALJ)	53%	47%	52%	48%	50%	50%	48%	52%	51%	49%
General Civil (excl. RALJ)	70%	30%	70%	30%	70%	30%	70%	30%	69%	31%
Domestic	60%	40%	60%	40%	61%	39%	60%	40%	61%	39%
Probate	88%	12%	85%	15%	85%	15%	85%	15%	86%	14%
Guardianship	66%	34%	61%	39%	61%	39%	64%	36%	61%	39%
Adoption	71%	29%	74%	26%	74%	26%	78%	22%	78%	22%
Paternity	52%	48%	47%	53%	46%	54%	45%	55%	45%	55%
Mental Illness	100%	---	100%	---	100%	---	100%	---	100%	---
Juvenile Dependency	65%	35%	60%	40%	58%	42%	56%	44%	65%	35%
Juvenile ARY/CHINS	85%	15%	76%	24%	72%	28%	64%	36%	69%	31%
Juvenile Truancy	66%	34%	76%	24%	63%	37%	49%	51%	46%	54%
Juvenile Offender	100%	---	100%	---	100%	---	100%	---	100%	---
Criminal RALJ	93%	7%	92%	8%	92%	8%	89%	11%	90%	10%
Civil RALJ	94%	6%	85%	15%	90%	10%	88%	12%	85%	15%

Reflecting all documents received by 04/15/2012.



Table 7. Quarterly Utilization of Pro Tem Judges/Commissioners <sup>(1)</sup>

Category	Q3/09	Q4/09	Q1/10	Q2/10	Q3/10	Q4/10	Q1/11	Q2/11	Q3/11	Q4/11	Q1/12
<b>Grand Total</b>	<b>1246</b>	<b>1407</b>	<b>884</b>	<b>1466</b>	<b>1029</b>	<b>1337</b>	<b>932</b>	<b>1354</b>	<b>850</b>	<b>1157</b>	<b>869</b>
<i>Paid hours</i>	1246	1407	884	1466	1029	1337	932	1354	850	1157	869
<i>Donated hours</i>	---	---	---	---	---	---	---	---	---	---	---
<b>Judge FTE Equivalent <sup>(3)</sup></b>	<b>2.8</b>	<b>3.1</b>	<b>2.0</b>	<b>3.3</b>	<b>2.3</b>	<b>3.0</b>	<b>2.1</b>	<b>3.0</b>	<b>1.9</b>	<b>2.6</b>	<b>1.9</b>
<b>By Work Type</b>											
On Trial/Hearings	1077	1133	757	1282	859	1103	773	1110	552	856	367
On Preparation	169	274	127	184	168	235	159	200	151	250	231
Other or Unspecified Activity	0	0	0	0	2	0	0	43	147	51	272
<b>By Case Type</b>											
Criminal	1	43	6	20	0	62	43	23	0	14	17
Civil	807	767	397	570	541	692	590	654	487	501	266
Domestic	264	238	97	331	162	297	129	414	220	409	426
Probate	0	0	0	0	0	0	0	0	0	0	0
Guardianship	0	0	0	0	0	0	0	0	0	0	0
Adoption	0	0	0	0	0	0	0	0	0	0	0
Paternity	0	0	0	0	0	0	0	0	0	0	0
Mental Illness	0	0	0	0	0	0	0	0	0	0	0
Juvenile Dependency	48	90	78	59	69	47	34	34	79	178	138
Juvenile Truancy	20	24	108	87	43	30	54	84	24	0	0
Juvenile Offender	107	246	199	204	214	211	83	139	39	54	23
Other or Unspecified	0	0	0	195	0	0	0	7	0	0	0
<b>By Calendar Type</b>											
Criminal Plea	0	0	0	0	0	0	35	19	0	14	17
Criminal Trial	1	0	0	0	0	0	52	0	0	0	0
Civil Trial	190	113	28	29	30	66	0	22	83	20	25
Individual Calendar	0	0	0	0	0	0	0	0	0	0	0
Family Law	310	543	173	392	290	429	279	426	227	405	426
Ex Parte	323	163	186	292	273	316	234	343	312	206	133
Mental Illness	131	64	51	55	51	81	66	145	45	262	108
Juvenile Dependency	89	117	104	158	118	109	89	147	95	192	131
Juvenile CHINS/ARY	0	0	0	0	0	0	0	0	0	0	0
Juvenile Truancy	20	24	108	87	43	30	54	80	30	0	7
Juvenile Offender	107	246	199	204	214	211	83	139	39	44	23
Other or Unspecified	76	139	37	249	9	96	41	33	21	0	0
<b>By Reason</b>											
Congestion	287	283	67	612	222	303	227	164	159	306	125
Medical Coverage	195	240	180	134	132	215	255	91	114	134	73
Vacation	649	599	425	529	547	623	319	672	314	603	451
Training	95	213	135	424	129	196	131	155	227	85	191
Judicial Conference	0	0	0	12	0	0	0	272	0	0	0
Others	20	73	78	0	0	0	0	0	36	27	29

(1) This table is based on the time sheet for compensation

(2) Judge FTE Equivalent = # of hours / [7.5 hours/day \* 20 days/month \* 3 months] = # of hours/450.

*The statistics on Pro Tem judge/commissioner use provide information on the external help the court has obtained in order to handle the workload. The data are collected on the time sheet for compensation (therefore it does not include unpaid volunteering or visiting judges/commissioners). The database on Pro Tem judges/commissioners is managed by the Administrative Services Department (ASD) of King County Superior Court. The Pro Tem total hours presented in this section are provided quarterly by ASD.*

Table 8. Family Law Activity

	3RD QTR, 2010		4TH QTR, 2010		1ST QTR, 2011		2ND QTR, 2011		3RD QTR, 2011		4TH QTR, 2011		1ST QTR, 2012	
	HRGS	ORDS	HRGS	ORDS	HRGS	ORDS	HRGS	ORDS	HRGS	ORDS	HRGS	ORDS	HRGS	ORDS
<b>SEATTLE</b>														
FAM.LAW	911	2366	938	2091	958	2169	869	2152	769	2220	765	2096	686	2255
DAILY AVG.	15	39	15	34	16	36	14	35	13	36	13	34	11	37
PATERNITY	691	1978	775	2036	831	1944	669	1763	465	1900	476	1602	523	1727
DAILY AVG.	11	32	13	33	14	32	11	29	8	31	8	26	9	28
DOM. VIOL.	483	589	474	543	474	571	448	529	354	497	303	477	309	498
DAILY AVG.	8	10	8	9	8	9	7	9	6	8	5	8	5	8
<b>KENT</b>														
FAM.LAW	646	1903	552	1568	562	1734	535	1745	519	1913	620	1759	808	1955
DAILY AVG.	11	31	9	26	9	28	9	29	9	31	10	29	13	32
PATERNITY	480	1583	443	1427	414	1340	361	1336	321	1281	380	1247	442	1279
DAILY AVG.	8	26	7	23	7	22	6	22	5	21	6	20	7	21
DOM. VIOL.	402	496	393	477	408	519	360	491	373	571	381	512	373	467
DAILY AVG.	7	8	6	8	7	9	6	8	6	9	6	8	6	8
<b>GRAND TOTAL</b>														
FAM.LAW	3613	8915	3575	8142	3647	8277	3242	8016	2801	8382	2925	7693	3141	8181
<b>OVERALL DAILY AVG.</b>	59	146	59	133	60	136	53	131	46	137	48	126	51	134

The statistics on family law and Ex Parte activity are obtained directly from SCOMIS using the appropriate docket codes.

Table 9. Ex Parte Activity

SEATTLE	1ST QTR, 2011		2ND QTR, 2011		3RD QTR, 2011		4TH QTR, 2011		1ST QTR, 2012	
	HRGS	ORDS	HRGS	ORDS	HRGS	ORDS	HRGS	ORDS	HRGS	ORDS
ADOP/PAT	91	301	120	337	169	328	191	532	86	233
DOM. VIOL.	7	335	9	341	38	330	29	301	21	355
OTH. CIVIL	419	843	361	795	429	552	360	562	327	589
DOMESTIC	891	2392	832	2470	1019	2227	889	2507	762	2163
PROB/GDN	1407	2635	1293	2582	1298	2248	1114	2205	1116	2502
SUBTOTAL	2815	6506	2615	6525	2953	5685	2583	6107	2312	5842
DAILY AVG.	46	107	43	107	48	93	42	100	38	96

SEATTLE VIA CLERK (starting Jan 2009)	1ST QTR, 2011		2ND QTR, 2011		3RD QTR, 2011		4TH QTR, 2011		1ST QTR, 2012	
	----	ORDS	----	ORDS	----	ORDS	----	ORDS	----	ORDS
ADOP/PAT	----	137	----	174	----	161	----	216	----	118
DOM. VIOL.	----	5	----	2	----	3	----	3	----	3
OTH. CIVIL	----	5990	----	8377	----	8644	----	8168	----	7957
DOMESTIC	----	884	----	1172	----	1299	----	1232	----	1220
PROB/GDN	----	684	----	666	----	714	----	690	----	715
SUBTOTAL	----	7700	----	10391	----	10821	----	10309	----	10013
DAILY AVG.	----	126	----	170	----	177	----	169	----	164

SEATTLE MAIL-IN	1ST QTR, 2011		2ND QTR, 2011		3RD QTR, 2011		4TH QTR, 2011		1ST QTR, 2012	
	----	ORDS	----	ORDS	----	ORDS	----	ORDS	----	ORDS
ADOP/PAT	----	3	----	2	----	4	----	2	----	2
DOM. VIOL.	----	0	----	0	----	0	----	0	----	0
OTH. CIVIL	----	243	----	218	----	189	----	153	----	142
DOMESTIC	----	50	----	42	----	47	----	55	----	28
PROB/GDN	----	94	----	116	----	68	----	63	----	84
SUBTOTAL	----	390	----	378	----	308	----	273	----	256
DAILY AVG.	----	6	----	6	----	5	----	4	----	4

Note: Ex Parte via Clerk started in January 2009.

Table 9 (cont). Ex Parte Activity

KENT	1ST QTR, 2011		2ND QTR, 2011		3RD QTR, 2011		4TH QTR, 2011		1ST QTR, 2012	
	HRGS	ORDS	HRGS	ORDS	HRGS	ORDS	HRGS	ORDS	HRGS	ORDS
ADOP/PAT	40	136	46	141	38	124	84	221	19	72
DOM. VIOL.	2	437	1	378	3	486	3	382	3	432
OTH. CIVIL	328	901	314	1091	291	628	311	520	272	411
DOMESTIC	441	1478	482	1683	481	1596	437	1548	425	1432
PROB/GDN	418	951	425	873	427	874	435	855	375	837
SUBTOTAL	1229	3903	1268	4166	1240	3708	1270	3526	1094	3184
DAILY AVG.	20	64	21	68	20	61	21	58	18	52

KENT VIA CLERK (starting Jan 2009)	1ST QTR, 2011		2ND QTR, 2011		3RD QTR, 2011		4TH QTR, 2011		1ST QTR, 2012	
	HRGS	ORDS	HRGS	ORDS	HRGS	ORDS	HRGS	ORDS	HRGS	ORDS
ADOP/PAT	----	74	----	39	----	40	----	37	----	37
DOM. VIOL.	----	1	----	0	----	2	----	3	----	1
OTH. CIVIL	----	3566	----	1654	----	1242	----	1104	----	1196
DOMESTIC	----	446	----	350	----	336	----	363	----	331
PROB/GDN	----	269	----	252	----	234	----	242	----	118
SUBTOTAL	----	4356	----	2295	----	1854	----	1749	----	1683
DAILY AVG.	----	71	----	38	----	30	----	29	----	28

KENT MAIL-IN	1ST QTR, 2011		2ND QTR, 2011		3RD QTR, 2011		4TH QTR, 2011		1ST QTR, 2012	
	HRGS	ORDS	HRGS	ORDS	HRGS	ORDS	HRGS	ORDS	HRGS	ORDS
ADOP/PAT	----	2	----	1	----	2	----	1	----	0
DOM. VIOL.	----	0	----	0	----	0	----	1	----	0
OTH. CIVIL	----	62	----	60	----	63	----	32	----	64
DOMESTIC	----	23	----	28	----	16	----	18	----	25
PROB/GDN	----	48	----	26	----	29	----	33	----	25
SUBTOTAL	----	135	----	115	----	110	----	85	----	114
DAILY AVG.	----	2	----	2	----	2	----	1	----	2

ALL SEATTLE KENT and EASTSIDE	1ST QTR, 2011		2ND QTR, 2011		3RD QTR, 2011		4TH QTR, 2011		1ST QTR, 2012	
	HRGS	ORDS	HRGS	ORDS	HRGS	ORDS	HRGS	ORDS	HRGS	ORDS
GRAND TOTAL	4044	22991	3883	23871	4193	22487	3853	22050	3406	21093
DAILY AVERAGE	66.3	376.9	63.7	391.3	68.7	368.6	63.2	361.5	55.8	345.8

Note: Ex Parte via Clerk started in January 2009.

# Appendix Glossary and Definition

## General Definition

### **Active Status**

A case is active if it is not on suspense status (see Suspense Status).

### **Case**

A case is defined as a filing with an assigned case number (or a case number plus a defendant connection code in pre-1990 criminal filings).

### **Completion**

A case is completed when dispositive document is filed with the court following resolution.

### **Jury Trial**

A hearing is reported as a jury trial if the jury is impaneled.

### **New Case**

A new case is an original filing with new case number assigned.

### **Non-Jury Trial**

A hearing is reported as a non-jury trial if an opening statement is made, waived, or reserved. A juvenile fact finding hearings is reported as a non-jury trial.

### **Pending Case**

A case is defined as pending if it is unresolved and active (not in suspense).

### **Reactivated Case**

A case returns to active status from suspense status during the reporting period.

### **Re-opened Cases**

A case is re-opened if it has been previously completed but returns to the court for supplement or change of the original case resolution. A re-opened case does not have a new case number. Only resolved cases can be "re-opened". (Note: measurement not available as of July 1996. SCOMIS capacity may exist after conversion to DB2 in the future).

### **Resolution**

A case is resolved if all issues in the complaint are fully adjudicated.

### **Suspended Case**

A case is placed in suspense status from active status during the reporting period.

### **Suspense Status**

A case is on suspense status if it is on warrant, appeal, stay, mediation, arbitration ("Deferred Prosecution" is not a suspense status, but is treated as a resolution).

### **Trial**

A hearing set before a judge or jury in which all the issues in the case are meant to be resolved. A trial normally includes opening statements to the court or jury stating what the evidence will show, introduction of witnesses and exhibits for direct and cross examination, final arguments to the court or jury in which counsel argue both the evidence and the law, and judgment by the court or jury stating what the facts of the case are and what law applies to the facts. In a jury case, it also includes the selection of the jury. A trial can be held

for one or more cases. A single trial may be held to adjudicate more than one case (as defined above).

### **Post-resolution Modifications**

In this report, we also report the post-resolution modifications for case type 3 (domestic) and 5 (paternity). These numbers are based on the tracks (DMOD and DTBA) opened after the original resolution date (i.e., if the track beginning date is after the resolution date).

## Section I. Filing Activity

### **Additional Filings with Clerk**

Filings with clerk without assigning a SCOMIS case number. This reporting category consists of search warrants, wire taps, extradition, oaths and orders pertaining to Pro Tem judge/commissioners/Court

Reporters/Bailiffs, and other "non-case" filings as recorded under 12050 system.

### **Annual Filings**

Total number of new case filings during the calendar year (January 1 to December 31).

### **Adoption Cases**

This reporting category includes the following "cause-of-action" codes within SCOMIS case type 5:

- Relinquishment (REL)
- Termination of Parent/Child Relationship (TER)
- Adoption (ADP)
- Miscellaneous (MSC)
- Name Change - Confidential (CHN)
- Initial Pre-Placement Report Filed with Clerk (PPR)

### **General Civil Cases**

"General Civil" cases include all civil matters other than Domestic, Probate, Guardianship, Adoption, Paternity and appeals from courts of limited jurisdiction and "Matters Filed with Clerk". "General civil" cases include small claims as identified by the "Small Claim Track". This reporting category includes the following "cause-of-action" codes within SCOMIS case type 2:

- Administrative Law Review (ALR)
- Change of Name - Non-Confidential (CHN)
- Collection (COL)
- Commercial (COM)
- Condemnation (CON)
- Domestic Violence Protection (DVP)
- Emancipation of Minor (EOM)
- Foreclosure (FOR)
- Civil Harassment (HAR)
- Injunction (INJ)
- Other Malpractice (MAL)
- Medical Malpractice (MED)
- Meretricious Relationship (MER)
- Malicious Harassment (MHA)
- Miscellaneous (MSC)
- Minor Settlement (MST) - as of 10/1/96, under Guardianship
- Petition of Civil Commitment- Sexual Predator (PCC)
- Property Fairness (PFA)

- Personal Injury (PIN)
- Property Damage (PRP)
- Quiet Title (QTI)
- Small Claims (LCA/LCI on “Small Claim Track”)
- Seizure of Property from the Commission of a Crime (SPC)
- Seizure of Property Resulting from a Crime (SPR)
- Tort Motor Vehicle (TMV)
- Tort Other (TTO)
- Unlawful Detainer (UND)
- Wrongful Death (WDE)
- Writ of Habeas Corpus (WHC)
- Miscellaneous Writ (WMW)
- Writ of Mandamus (WRM)
- Writ of Restitution (WRR)
- Writ of Review (WRV)

**Civil RALJ Cases**

Civil appeals from courts of limited jurisdiction (excluding small claims as identified by the “Small Claim Track”). Civil RALJ includes the following “cause-of-action” reporting categories:

- Lower Court Appeal - Civil and “Not a Small Claim”
- Lower Court Appeal - Infraction and “Not a Small Claim”

Note: The Civil RALJ cases are determined based on both SCOMIS “cause-of-action” code (LCA and LCI) within SCOMIS case type 2 and the “Small Claim Track”.

**Criminal Cases (excl. RALJ)**

Adult criminal cases, excluding appeals from courts of limited jurisdiction. This reporting category includes the following crime categories within SCOMIS case type 1:

- Homicide
- Sex Crime
- Robbery
- Assault
- Theft/Burglary
- Motor Vehicle Theft
- Controlled Substance
- Other Felony
- Others (Misdemeanor, Non-charge Case)

**Criminal RALJ Cases**

Criminal appeals from courts of limited jurisdiction. This reporting category includes all SCOMIS case type 1 cases that have an appeal from lower court field of “Yes”.

**Domestic Cases**

This reporting category includes the following “cause-of-action” codes within SCOMIS case type 3:

- Annulment – Invalidity (INV)
- Child Custody (CUS)
- Dissolution With Children Of The Marriage (DIC)
- Dissolution With No Children Of The Marriage (DIN)
- Dissolution of Domestic Partnership – With Children (DPC)
- Dissolution of Domestic Partnership – With No Children (DPN)
- Foreign Judgment (FJU)
- Invalidity – Domestic Partnership (INP)
- Mandatory Wage Assignment (MWA)
- Miscellaneous (MSC)
- Modification (MOD)
- Modification – Support Only (MDS)
- Out-Of-State Child Custody (OSC)
- Parenting Plan / Child Support (PPS)
- Reciprocal, Respondent In-County (RIC)
- Reciprocal, Respondent Out-of-County (ROC)
- Legal Separation (SEP)
- Legal Separation – Domestic Partnership (SPD)

**Guardianship Cases**

This reporting category includes the following “cause-of-action” codes within SCOMIS case type 4:

- Guardianship/Estate (G/E)
- Guardianship (GND)

- Limited Guardianship (LGD)
- Minor Settlement (MST)

**Juvenile ARY/CHINS Cases**

Juvenile dependency cases, excluding truancy cases and DEP cause code. This reporting category includes following “cause-of-action” codes within SCOMIS case type 7:

- Alternative Residential Placement (ARP)
- At-Risk Youth (ARY)
- Child in Need of Service (CNS)
- Termination (TER)

**Juvenile Dependency Cases**

This reporting category includes following “cause-of-action” codes within SCOMIS case type 7:

- Dependency (DEP)

**Juvenile Offender Cases**

This reporting category includes the following crime categories in SCOMIS case type 8:

- Homicide
- Sex Crime
- Robbery
- Assault
- Theft/Burglary
- Motor Vehicle Theft
- Controlled Substance
- Other Felony
- Others (Misdemeanor, Non-charge Case)

**Juvenile Truancy Cases**

Mandatory truancy filings started on 10/01/1995. This reporting category includes the following “cause-of-action” code within SCOMIS case type 7:

- Truancy (TRU)

**Matters Filed with Clerk**

Filings with clerk (case numbers assigned), but requiring little or no judicial action. This reporting category includes the following “cause-of-action” codes within SCOMIS case type 2:

- Abstract of Judgment (ABJ)
- Foreign Judgment (FJU)
- Tax Warrant (TAX)
- Transcripts of Judgment (TRJ)

**Mental Illness Cases**

This reporting category includes all “cause-of-action” codes within SCOMIS case type 6:

- Alcoholic Treatment (ALT)
- Mental Illness - Adult (MI)
- Mental Illness - Juvenile (MIJ)

**Paternity Cases**

This reporting category includes the following “cause-of-action” codes within SCOMIS case type 5:

- Modification (MOD)
- Paternity (PAT)
- Paternity/URESA/UIFSA (PUR)

**Probate Cases**

This reporting category includes the following “cause-of-action” codes within SCOMIS case type 4:

- Absentee (ABS)
- Disclaimer (DSC)
- Estate (EST)
- Foreign Will (FNW)
- Miscellaneous (MSC)
- Non-Probate Notice to Creditors (NNC)
- Will Only (WLL)

### **Total Cases**

New cases with case numbers assigned, excluding “Matters Filed with Clerk” and “Additional Filings with Clerk”.

### **Year-to-Date Filings**

Total number of new filings since the beginning of calendar year (January 1) to the end of reporting period.

## **Section II. Resolution Category**

### **Adoption - Resolved by Trial**

Court Decision after Non-Jury Trial (CDAT)

### **Adoption - Uncontested**

Consolidated Case (CONS)  
Uncontested Resolution (UNDS)

### **Adoption - Settlement/Dismissal**

Closed by Court Order after a Hearing (CLCO)  
Dismissal without Trial (DSM)  
Dismissal after Non-Jury Trial Commencement (DAT)  
Settled after Non-Jury Trial Commencement (SAT)  
Settled by Parties/Agreed Judgment (STPR)

### **Adoption - Closure by Clerk**

Dismissal/Closure by Clerk (DSCK)

### **Adoption - Others**

Change of Venue/Jurisdiction (CHV)  
Other Non-specified Resolutions

### **Civil - Resolved by Jury Trial**

Jury Verdict after Trial (JVAT)

### **Civil - Resolved by Non-Jury Trial**

Court Decision after Non-Jury Trial (CDAT)

### **Civil - Summary Judgment**

Summary Judgment (SMJG)

### **Civil - Default/Uncontested**

Consolidated Case (CONS)  
Default Judgment (DFJG)  
Uncontested Resolution (UNDS)

### **Civil - Arbitration**

Settle by Arbitration (ARBA)

### **Civil - Settlement/Dismissal**

Closed by Court Order after a Hearing (CLCO)  
Dismissal after Non-Jury Trial (DAT)  
Dismissal after Jury Trial (DJT)  
Dismissal (DSM)  
Settled after Non-Jury Trial Commencement (SAT)  
Settled after Jury Trial Commencement (SJT)  
Settled by Parties/Agreed Judgment (STPR)

### **Civil - Closure by Clerk**

Dismissal/Closure by Clerk (DSCK)

### **Civil - Others**

Transferred to Federal bankruptcy Court (BANK)  
Change of Venue/Jurisdiction (CHV)  
Other Non-specified Resolutions

### **Civil RALJ - RALJ Decision**

Court Decision to Affirm Appeal/review (CDTA)  
Court Decision to Modify Appeal/Review (CDTM)  
Court Decision to Reverse Appeal/review (CDTR)

### **Civil RALJ - Dismissal**

Dismissal and Remand of Appeal/Review (DSRM)

### **Civil RALJ - Others**

Other Non-specified Resolutions

### **Comparison with Court Standard**

Percentage of cases actually falling within the Court’s standard benchmark.

### **Court Standard**

Benchmarks set by a state advisory committee and adopted by the court indicating percentage of cases to be resolved at certain age (in months, 1 month = 30 days as used in the Advisory Case Processing Time Standard as published in the Court Rule).

Court standard is based on timelines as suggested by State Advisory Committee. For a case type with no time standard, the standard for a similar case type is adopted if appropriate.

*Criminal: 90% by 4 months, 98% by 6 months, 100% by 9 months.*

*Civil: 90% by 12 months, 98% by 18 months, 100% by 24 months.*

*Domestic: 90% by 8 months, 98% by 10 months, 100% by 14 months.*

*Probate/Guardianship: 90% by 8 months, 98% by 18 months, 100% by 36 months.*

*Adoption/Paternity: 90% by 8 months, 98% by 10 months, 100% by 14 months.*

*Mental Illness/Juvenile Truancy: No standard yet.*

*Juvenile Dependency: 90% by 8 months, 98% by 10 months, 100% by 14 months.*

*Juvenile Offender: 90% by 4 months, 98% by 6 months, 100% by 9 months.*

*Criminal RALJ/Civil RALJ: 90% by 4 months, 98% by 5 months, 100% by 6 months.*

### **Criminal - Resolved by Jury Trial**

Acquittal by Jury (AQJV)  
Convicted - Jury Verdict after Trial (CVJV)

### **Criminal - Resolved by Non-Jury Trial**

Acquittal by Court (AQCT)  
Convicted - Court Decision after Non-Jury Trial (CVCT)

### **Criminal - Resolved by Guilty Plea**

Guilty Plea (GP)  
Guilty Plea after Non-Jury Trial Commencement (GPAT)  
Guilty Plea after Jury Trial Commencement (GPJT)

### **Criminal - Dismissal**

Dismissal after Non-Jury Trial Commencement (DAT)  
Dismissal after Jury Trial Commencement (DJT)  
Dismissal (DSM)

### **Criminal - Others**

Change of Venue (CHV)  
Consolidated Case (CONS)  
Continued Order of Prosecution with Completion (CTOP)\*  
Deferred Prosecution (DFPD)  
Dismissal/Closure by Clerk (DSCK)  
Governor’s warrant (GW)  
Not Guilty by Reason of Insanity (NGRI)  
Uncontested Resolution (UNDS)  
Waiver of Extradition (WE)  
Other Non-specified Resolutions

\* Note: For adult criminal cases, “CTOP” does not necessarily constitute resolution. An adult criminal case with a “CTOP” as resolution code is counted as a resolved case only if a completion code exists along with the “CTOP”. If the resolution code is CTOP and there is no completion code, then the case is treated as unresolved. The primary reason for combining “CTOP” with a completion code is to determine

resolution for drug court cases (CTOP is entered in the SCOMIS resolution field as soon as a defendant enrolls in Drug Court). This rule on “CTOP” applies to adult criminal cases only.

### ***Criminal RALJ - RALJ Decision***

Court Decision to Affirm Appeal/review (CDTA)  
Court Decision to Modify Appeal/Review (CDTM)  
Court Decision to Reverse Appeal/review (CDTR)

### ***Criminal RALJ - Dismissal***

Dismissal and Remand of Appeal/Review (DSRM)

### ***Criminal RALJ - Others***

Other Non-specified Resolutions

### ***Domestic - Resolved by Trial***

Court Decision after Non-Jury Trial (CDAT)

### ***Domestic - Default/Uncontested***

Consolidated Case (CONS)  
Default Judgment (DFJG)  
Uncontested Resolution (UNDS)

### ***Domestic - Settlement/Dismissal***

Settled by Arbitration (ARBA)  
Closed by Court Order after a Hearing (CLCO)  
Dismissal after Non-Jury Trial Commencement (DAT)  
Dismissal (DSM)  
Settled after Non-Jury Trial Commencement (SAT)  
Settled by Parties/Agreed Judgment (STPR)

### ***Domestic - Closure by Clerk***

Dismissal/Closure by Clerk (DSCK)

### ***Domestic - Others***

Change of Venue/Jurisdiction (CHV)  
Summary Judgment (SMJG)  
Other Non-specified Resolutions

### ***Guardianship - Guardian Appointed***

Guardian Appointed (PRGA)

### ***Guardianship - Dismissal***

Closed by Court Order after a Hearing (CLCO)  
Dismissal (DSM)

### ***Guardianship - Closure by Clerk***

Dismissal/Closure by Clerk (DSCK)

### ***Guardianship - Others***

Change of Venue/Jurisdiction (CHV)  
Consolidated Case (CONS)  
Uncontested Resolution (UNDS)  
Other Non-specified Resolutions

### ***Juvenile Dependency - Finding of Dependency***

Approved Petition (APP)

### ***Juvenile Dependency - Dismissal***

Dismissal (DSM)

### ***Juvenile Dependency - Others***

Change of Venue/Jurisdiction (CHV)  
Consolidated Case (CONS)  
Transfer of Jurisdiction (TRJU)  
Other Non-specified Resolutions

### ***Juvenile Offender - Resolved by Trial***

Acquittal by Court (AQCT)  
Convicted - Court Decision after Adjudictory Hearing (CVCT)

### ***Juvenile Offender - Resolved by Guilty Plea***

Guilty Plea before Adjudictory Hearing Commencement (GP)  
Guilty Plea after Adjudictory Hearing Commencement (GPAT)

### ***Juvenile Offender - Dismissal***

Dismissal after Adjudictory Hearing Commencement (DAT)  
Dismissal (DSM)

### ***Juvenile Offender - Others***

Change of venue (CHV)  
Dismissal/Closure by Clerk (DSCK)  
Consolidated Case (CONS)

Continued Prosecution (CTOP)  
Decline of Jurisdiction (DECL)  
Uncontested Resolution (UNDS)  
Other Non-specified Resolutions

### ***Juvenile Truancy - Finding of Truancy***

Approved Petition (APP)

### ***Juvenile Truancy - Dismissal***

Dismissal (DSM)

### ***Juvenile Truancy - Others***

Change of Venue (CHV)  
Consolidated Case (CONS)  
Transfer of Jurisdiction (TRJU)  
Other Non-specified Resolutions

### ***Mental Illness - Court Decision to Commit***

Court Decision to Commit (CDTC)

### ***Mental Illness - Closed by Court***

Closed by Court (CLCO)

### ***Mental Illness - Dismissal***

Dismissal (DSM)

### ***Mental Illness - Others***

Change of Venue/Jurisdiction (CHV)  
Uncontested Resolution (UNDS)  
Other Non-specified Resolutions

### ***Paternity - Resolved by Trial***

Court Decision after Non-Jury Trial (CDAT)

### ***Paternity - Summary Judgment***

Summary Judgment (SMJG)

### ***Paternity - Default/Uncontested***

Consolidated Case (CONS)  
Default Judgment (DFJG)  
Uncontested Resolution (UNDS)

### ***Paternity - Settlement/Dismissal***

Settled by Arbitration (ARBA)  
Closed by Court Order after a Hearing (CLCO)  
Dismissal after Non-Jury Trial Commencement (DAT)  
Dismissal (DSM)  
Settled after Non-Jury Trial Commencement (SAT)  
Settled by Partied/Agreed Judgment (STPR)

### ***Paternity - Closure by Clerk***

Dismissal/Closure by Clerk (DSCK)

### ***Paternity - Others***

Change of Venue (CHV)  
Other Non-specified Resolutions

### ***Percentile***

Percent of cases resolved at a given age. For example, if resolved cases had a 98 percentile of 12 months, it means that 98% of the cases were resolved within the age of 12 months, or conversely 2% of the cases were resolved after 12 months, not counting suspense time.



**Probate - Personal Representative Appointed**

Non-Intervention Probate (NIP)  
Personal Representative Appointed (PRGA)

**Probate - Dismissal**

Closed by Court Order after a Hearing (CLCO)  
Dismissal (DSM)

**Probate - Closure by Clerk**

Dismissal/Closure by Clerk (DSCK)

**Probate - Others**

Change of Venue (CHV)  
Consolidated Case (CONS)  
Uncontested Resolution (UNDS)  
Other Non-specified Resolutions

**Backlogged Cases**

Active pending cases with an age exceeding the court-adopted time standard for each specific case type (recommended by the State Advisory Committee, see definition for *Court Standard*).

**Section III. Pending Caseload**

**Adjustment**

Adjustment made because of vacating of resolutions, or change in suspense status between two reporting period.

**End Pending**

Total number of pending cases at the end of reporting period.

**Previous Pending**

Total number of pending cases at the beginning of reporting period.

**Resolution Rate**

Resolution rate is defined as the ratio of number of resolutions to number of new filings (i.e., number of resolutions divided by number of new filings) during the reporting period. The resolution rate measures the relative pace of resolution in relation to the pace of new filings. A resolution rate of greater than 1 indicates the number of resolutions exceeds the number of new filings.

**On-review Status**

Cases that have been resolved (post-resolution) but still need court resources for periodic review and other remaining outstanding issues.

*Probate (EST), Paternity (PAT) and Dependency (DEP): Resolved and not completed (paternity or dependency established, but outstanding issues remain).*

*Guardianship (GDN,LGD,G/E): Resolved and on tracks of G1,G2,G3,GE or GD; Minor Settlement (MST): Resolved with a future hearing date.*

**Section IV. Age of Pending Cases**

**Case Age**

The age of a case is the time (number of days) since the filing date, less any suspense time if applicable.

**Median Age**

The median age is the time that 50% of the cases are under and 50% are above the given age. For example, if pending cases have a median age of 12 months, it means that 50% of the pending cases are within the age of 12 months, and 50% of pending cases are over 12 months. The median age is more robust to cases with extreme age values than the average age.

**Suspense Time**

Time (days) that a case is on suspense status before its resolution. If a case has more than one suspense between filing and resolution, the suspense time is the total from all suspenses. Time on suspense status after resolution (e.g., appeals) is not counted.