

King County Superior Court  
Quarterly Statistical Report

Fourth Quarter 2012

Department of Judicial Administration  
Prepared by: Shiquan Liao, Ph.D., Statistician

*Release Date: January 20, 2013*

**Report #: QTR-2012-4**

Table 1. Year-to-Date Filing Activity

King County Superior Court

Reporting Category	Year-to-Date and Annual Filing Activity <sup>(1)</sup>					2011-2012 change (+ means "increase")		% of 2012 Total Filing <sup>(2)</sup>
	2008	2009	2010	2011	2012	Cases	Percentage	
<b>Total (incl. RALJ)</b>								
Year-to-Date Filing	62018	62148	59798	58337	54834	-3503	-6.0%	
Annual Filing	62018	62148	59798	58337	54834			
<b>Criminal (excl. RALJ)</b>								
Year-to-Date Filing	8667	6498	6691	5986	5942	-44	-0.7%	10.8%
Annual Filing	8667	6498	6691	5986	5942			
<b>General Civil (excl. Asbestos)</b>								
Year-to-Date Filing	27509	29789	27603	27499	24477	-3022	-11.0%	44.7%
Annual Filing	27509	29789	27603	27499	24477			
<b>Asbestos Cases (civil) <sup>(3)</sup></b>								
Year-to-Date Filing	68	32	29	43	36	-7	-16.3%	0.1%
Annual Filing	68	32	29	43	36			
<b>Domestic</b>								
Year-to-Date Filing	7254	7673	7850	7865	7678	-187	-2.3%	14.0%
Annual Filing	7254	7673	7850	7865	7678			
<b>Probate</b>								
Year-to-Date Filing	5373	5110	5203	5417	5492	+75	+1.4%	10.0%
Annual Filing	5373	5110	5203	5417	5492			
<b>Guardianship</b>								
Year-to-Date Filing	901	841	893	837	879	+42	+5.0%	1.6%
Annual Filing	901	841	893	837	879			
<b>Adoption</b>								
Year-to-Date Filing	772	685	686	688	511	-177	-25.7%	0.9%
Annual Filing	772	685	686	688	511			
<b>Paternity</b>								
Year-to-Date Filing	1147	1233	1189	1039	1161	+122	+11.7%	2.1%
Annual Filing	1147	1233	1189	1039	1161			
<b>Mental Illness</b>								
Year-to-Date Filing	2420	2727	3059	3506	3591	+85	+2.4%	6.6%
Annual Filing	2420	2727	3059	3506	3591			
<b>Juvenile Dependency</b>								
Year-to-Date Filing	888	903	1038	1060	1050	-10	-0.9%	1.9%
Annual Filing	888	903	1038	1060	1050			
<b>Juvenile ARY/CHINS</b>								
Year-to-Date Filing	417	341	347	303	242	-61	-20.1%	0.4%
Annual Filing	417	341	347	303	242			
<b>Juvenile Truancy</b>								
Year-to-Date Filing	2512	2083	1614	1350	1271	-79	-5.9%	2.3%
Annual Filing	2512	2083	1614	1350	1271			
<b>Juvenile Offender</b>								
Year-to-Date Filing	3803	3967	3356	2496	2249	-247	-9.9%	4.1%
Annual Filing	3803	3967	3356	2496	2249			
<b>Criminal RALJ</b>								
Year-to-Date Filing	214	180	176	191	192	+1	+0.5%	0.4%
Annual Filing	214	180	176	191	192			
<b>Civil RALJ</b>								
Year-to-Date Filing	73	86	64	57	63	+6	+10.0%	0.1%
Annual Filing	73	86	64	57	63			
<b>Matters Filed with Clerk <sup>(4)</sup></b>								
Year-to-Date Filing	13881	14662	15586	14799	15046	+247	+1.7%	
Annual Filing	13881	14662	15586	14799	15046			

(1) New filings only (based on filing date), excluding re-opened cases (unable to count), and reflecting all documents received by 01/15/2013.

(2) New filings of each reporting category as percentage of "Year-to-Date Filing".

(3) "Matters Filed with Clerk" and "Additional Filings with Clerk" are not included in the "Total".

Chart 1-A. Quarterly Filing Activity  
Total Judicial Cases Only ("Matters Filed with Clerk" excluded)

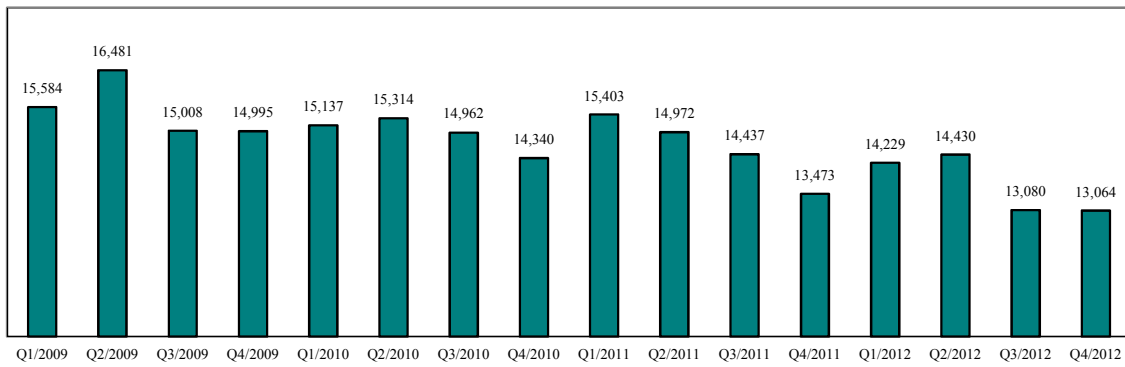
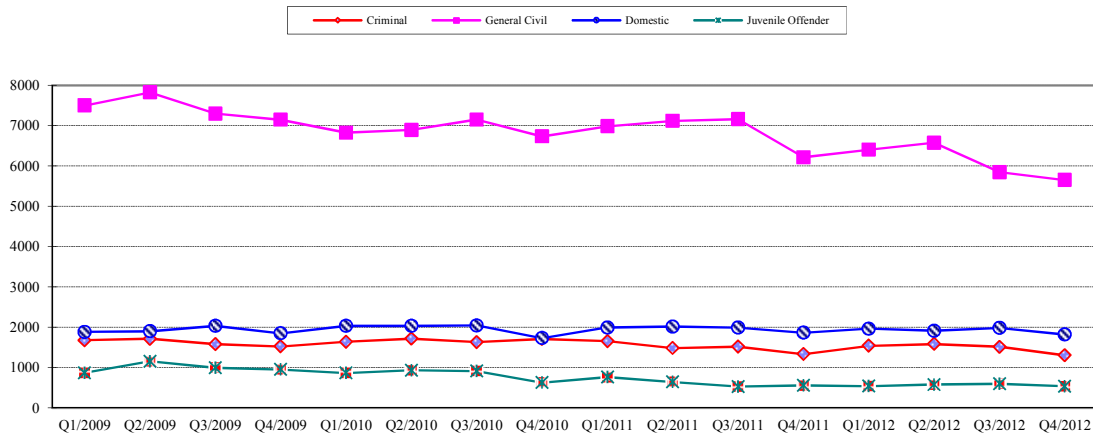


Chart 1-B. Quarterly Filings: Criminal, Domestic, General Civil and Juvenile Offender Cases Only



\* Note: "General Civil" is specifically defined in this report. The category of "General Civil" does **not** include the following case types: domestic, probate, guardianship, adoption, paternity, mental illness, juvenile cases (dependency, at-risk youth, child-in-need of service, civil RALJ, and tax filings that don't require judicial resources ("matters filed with clerk"). Please check the Appendix for the cause codes in the "General Civil" category.

Table 1-A. Post-Resolution Modifications (Domestic and Paternity Cases)

*Based on Tracks Opened After Original Resolution Date*

		2010Q1			2010Q2			2010Q3			2010Q4			Year 2010		
Location	Case Type	DMOD	DTBA	Total	DMOD	DTBA	Total	DMOD	DTBA	Total	DMOD	DTBA	Total	DMOD	DTBA	Total
KNT	Domestic	134	75	209	155	86	241	153	69	222	117	53	170	559	283	842
	Paternity	20	20	40	11	19	30	24	13	37	20	10	30	75	62	137
<b>KNT Total</b>		<b>154</b>	<b>95</b>	<b>249</b>	<b>166</b>	<b>105</b>	<b>271</b>	<b>177</b>	<b>82</b>	<b>259</b>	<b>137</b>	<b>63</b>	<b>200</b>	<b>634</b>	<b>345</b>	<b>979</b>
SEA	Domestic	116	79	195	142	105	247	133	71	204	116	77	193	507	332	839
	Paternity	16	13	29	16	23	39	22	19	41	17	20	37	71	75	146
<b>SEA Total</b>		<b>132</b>	<b>92</b>	<b>224</b>	<b>158</b>	<b>128</b>	<b>286</b>	<b>155</b>	<b>90</b>	<b>245</b>	<b>133</b>	<b>97</b>	<b>230</b>	<b>578</b>	<b>407</b>	<b>985</b>
<b>KNT/SEA Total</b>		<b>286</b>	<b>187</b>	<b>473</b>	<b>324</b>	<b>233</b>	<b>557</b>	<b>332</b>	<b>172</b>	<b>504</b>	<b>270</b>	<b>160</b>	<b>430</b>	<b>1212</b>	<b>752</b>	<b>1964</b>
		2011Q1			2011Q2			2011Q3			2011Q4			Year 2011		
Location	Case Type	DMOD	DTBA	Total	DMOD	DTBA	Total	DMOD	DTBA	Total	DMOD	DTBA	Total	DMOD	DTBA	Total
KNT	Domestic	151	65	216	165	76	241	135	54	189	150	67	217	601	262	863
	Paternity	22	6	28	23	10	33	20	3	23	18	3	21	83	22	105
<b>KNT Total</b>		<b>173</b>	<b>71</b>	<b>244</b>	<b>188</b>	<b>86</b>	<b>274</b>	<b>155</b>	<b>57</b>	<b>212</b>	<b>168</b>	<b>70</b>	<b>238</b>	<b>684</b>	<b>284</b>	<b>968</b>
SEA	Domestic	118	75	193	151	106	257	143	75	218	155	76	231	567	332	899
	Paternity	19	19	38	17	23	40	19	30	49	7	17	24	62	89	151
<b>SEA Total</b>		<b>137</b>	<b>94</b>	<b>231</b>	<b>168</b>	<b>129</b>	<b>297</b>	<b>162</b>	<b>105</b>	<b>267</b>	<b>162</b>	<b>93</b>	<b>255</b>	<b>629</b>	<b>421</b>	<b>1050</b>
<b>KNT/SEA Total</b>		<b>310</b>	<b>165</b>	<b>475</b>	<b>356</b>	<b>215</b>	<b>571</b>	<b>317</b>	<b>162</b>	<b>479</b>	<b>330</b>	<b>163</b>	<b>493</b>	<b>1313</b>	<b>705</b>	<b>2018</b>
		2012Q1			2012Q2			2012Q3			2012Q4			Year 2012		
Location	Case Type	DMOD	DTBA	Total	DMOD	DTBA	Total	DMOD	DTBA	Total	DMOD	DTBA	Total	DMOD	DTBA	Total
KNT	Domestic	183	55	238	153	56	209	150	61	211	159	38	197	645	210	855
	Paternity	15	4	19	14	8	22	16	4	20	13	6	19	58	22	80
<b>KNT Total</b>		<b>198</b>	<b>59</b>	<b>257</b>	<b>167</b>	<b>64</b>	<b>231</b>	<b>166</b>	<b>65</b>	<b>231</b>	<b>172</b>	<b>44</b>	<b>216</b>	<b>703</b>	<b>232</b>	<b>935</b>
SEA	Domestic	153	68	221	156	84	240	192	71	263	149	68	217	650	291	941
	Paternity	6	18	24	13	22	35	16	10	26	4	7	11	39	57	96
<b>SEA Total</b>		<b>159</b>	<b>86</b>	<b>245</b>	<b>169</b>	<b>106</b>	<b>275</b>	<b>208</b>	<b>81</b>	<b>289</b>	<b>153</b>	<b>75</b>	<b>228</b>	<b>689</b>	<b>348</b>	<b>1037</b>
<b>KNT/SEA Total</b>		<b>357</b>	<b>145</b>	<b>502</b>	<b>336</b>	<b>170</b>	<b>506</b>	<b>374</b>	<b>146</b>	<b>520</b>	<b>325</b>	<b>119</b>	<b>444</b>	<b>1392</b>	<b>580</b>	<b>1972</b>

\* DMOD = parenting plan modification track; DTBA = support modification track.

Table 2. Number of Cases Resolved and Resolution Category (%)

King County Superior Court

Reporting Category	Q1/11	Q2/11	Q3/11	Q4/11	Q1/12	Q2/12	Q3/12	Q4/12*
<b>Total Resolutions (excl. "Matters Filed with Clerk")</b>	<b>15842</b>	<b>16070</b>	<b>15396</b>	<b>14291</b>	<b>13683</b>	<b>15255</b>	<b>13962</b>	<b>13730</b>
<b>Criminal (excl. RALJ): # Resolved</b>	<b>1680</b>	<b>1599</b>	<b>1522</b>	<b>1466</b>	<b>1309</b>	<b>1477</b>	<b>1365</b>	<b>1423</b>
Resolved by Jury Trial	4.8%	3.8%	4.6%	4.1%	5.0%	3.5%	3.0%	3.1%
Resolved by Non-Jury Trial	1.6%	1.3%	1.1%	0.6%	1.0%	0.6%	0.7%	1.1%
Resolved by Guilty Plea	76.3%	78.4%	78.1%	78.4%	78.2%	80.0%	79.9%	82.3%
Dismissal	16.8%	16.1%	15.6%	16.6%	15.4%	15.8%	16.0%	13.2%
Others	0.5%	0.4%	0.6%	0.3%	0.3%	0.1%	0.4%	0.4%
<b>General Civil: # Resolved</b>	<b>7652</b>	<b>7866</b>	<b>7293</b>	<b>6905</b>	<b>6502</b>	<b>7295</b>	<b>6473</b>	<b>6274</b>
Resolved by Jury Trial	0.5%	0.4%	0.4%	0.5%	0.5%	0.6%	0.5%	0.4%
Resolved by Non-Jury Trial	0.4%	0.4%	0.3%	0.3%	0.4%	0.3%	0.4%	0.4%
Summary Judgment	1.7%	1.8%	1.7%	1.9%	2.3%	2.3%	1.9%	1.8%
Default/ Uncontested	38.9%	42.2%	43.6%	40.5%	42.5%	44.5%	40.5%	41.5%
Arbitration	1.8%	2.0%	2.3%	2.5%	2.3%	2.1%	2.1%	2.6%
Settlement/Dismissal	52.5%	49.5%	48.4%	50.1%	48.7%	46.6%	50.9%	50.0%
Closure by Clerk	3.4%	2.8%	2.6%	3.6%	2.3%	2.9%	3.0%	2.2%
Others	0.9%	0.8%	0.7%	0.7%	1.0%	0.9%	0.8%	1.1%
<b>Asbestos Cases (civil): # Resolved</b>	<b>4</b>	<b>21</b>	<b>8</b>	<b>18</b>	<b>12</b>	<b>11</b>	<b>36</b>	<b>31</b>
Resolved by Jury Trial	0.0%	0.0%	0.0%	5.6%	0.0%	0.0%	0.0%	0.0%
Resolved by Non-Jury Trial	0.0%	0.0%	0.0%	0.0%	0.0%	0.0%	0.0%	0.0%
Summary Judgment	25.0%	0.0%	0.0%	5.6%	0.0%	0.0%	0.0%	0.0%
Default/ Uncontested	25.0%	4.8%	25.0%	0.0%	25.0%	0.0%	2.8%	0.0%
Arbitration	0.0%	0.0%	0.0%	0.0%	0.0%	0.0%	0.0%	0.0%
Settlement/Dismissal	50.0%	95.2%	75.0%	88.9%	75.0%	100%	16.7%	100%
Closure by Clerk	0.0%	0.0%	0.0%	0.0%	0.0%	0.0%	80.6%	0.0%
Others	0.0%	0.0%	0.0%	0.0%	0.0%	0.0%	0.0%	0.0%
<b>Domestic: # Resolved</b>	<b>1991</b>	<b>2002</b>	<b>2004</b>	<b>2024</b>	<b>1838</b>	<b>1947</b>	<b>1929</b>	<b>2081</b>
Resolved by Trial	4.4%	4.9%	3.5%	3.7%	4.2%	4.3%	4.2%	4.9%
Default/ Uncontested	8.4%	9.5%	9.8%	9.0%	8.6%	7.7%	9.5%	10.0%
Settlement /Dismissal	86.0%	84.4%	85.1%	85.7%	85.6%	86.4%	84.8%	84.5%
Closure by Clerk	0.7%	0.8%	1.3%	1.5%	1.0%	1.3%	1.1%	0.5%
Others	0.5%	0.5%	0.3%	0.1%	0.7%	0.3%	0.4%	0.0%
<b>Probate: # Resolved</b>	<b>1495</b>	<b>1497</b>	<b>1265</b>	<b>1200</b>	<b>1355</b>	<b>1438</b>	<b>1266</b>	<b>1336</b>
Personal Rep. Appointed	72.2%	71.1%	72.2%	72.5%	72.3%	72.3%	70.5%	72.8%
Dismissal	2.1%	3.3%	2.3%	2.56%	2.2%	2.5%	2.0%	2.0%
Closure by Clerk	0.2%	0.0%	0.1%	0.1%	0.0%	0.1%	0.0%	0.0%
Others	25.5%	25.5%	25.5%	24.8%	25.5%	25.0%	27.6%	25.3%
<b>Guardianship: # Resolved</b>	<b>207</b>	<b>203</b>	<b>222</b>	<b>190</b>	<b>180</b>	<b>246</b>	<b>222</b>	<b>219</b>
Guardian Appointed	53.1%	55.2%	47.8%	52.6%	52.2%	51.6%	62.2%	58.0%
Dismissal	45.9%	44.3%	52.3%	46.8%	46.7%	48.0%	36.9%	42.0%
Closure by Clerk	0.0%	0.0%	0.0%	0.0%	0.0%	0.0%	0.0%	0.0%
Others	1.0%	0.5%	0.0%	0.5%	1.1%	0.4%	0.9%	0.0%
<b>Adoption: # Resolved</b>	<b>154</b>	<b>173</b>	<b>151</b>	<b>237</b>	<b>83</b>	<b>118</b>	<b>113</b>	<b>190</b>
Resolved by Trial	0.0%	0.0%	0.7%	0.0%	0.0%	0.9%	0.0%	0.0%
Uncontested	9.7%	2.3%	2.0%	3.0%	9.6%	0.9%	3.5%	0.0%
Settlement /Dismissal	88.3%	94.8%	96.7%	96.6%	90.4%	96.6%	96.5%	100%
Closure by Clerk	0.0%	1.2%	0.7%	0.4%	0.0%	1.7%	0.0%	0.0%
Others	2.0%	1.2%	0.0%	0.0%	0.0%	0.0%	0.0%	0.0%
<b>Paternity: # Resolved</b>	<b>332</b>	<b>250</b>	<b>270</b>	<b>256</b>	<b>257</b>	<b>285</b>	<b>275</b>	<b>230</b>
Resolved by Trial	1.2%	0.4%	1.1%	0.4%	0.4%	0.0%	0.7%	0.4%
Summary Judgment	45.2%	40.0%	42.6%	43.0%	36.6%	34.7%	40.4%	49.1%
Default/ Uncontested	21.4%	21.2%	21.9%	23.1%	28.0%	29.8%	25.1%	25.2%
Settlement/Dismissal	32.2%	38.0%	34.1%	33.2%	34.6%	34.7%	33.8%	25.2%
Closure by Clerk	0.0%	0.0%	0.4%	0.4%	0.4%	0.7%	0.0%	0.0%
Others	0.0%	0.4%	0.0%	0.0%	0.0%	0.0%	0.0%	0.0%

Reflecting all documents received by 01/15/2013.

Table 2 (cont.). Number of Cases Resolved and Resolution Category (%)

## King County Superior Court

Reporting Category	Q1/11	Q2/11	Q3/11	Q4/11	Q1/12	Q2/12	Q3/12	Q4/12*
<b>Mental Illness: # Resolved</b>	<b>829</b>	<b>865</b>	<b>841</b>	<b>895</b>	<b>865</b>	<b>1078</b>	<b>996</b>	<b>844</b>
Court Decision to Commit	65.9%	67.5%	70.1%	64.0%	74.2%	57.7%	62.0%	68.3%
Closed by Court	0.0%	0.0%	0.0%	0.0%	0.0%	0.0%	0.0%	0.0%
Dismissal	19.8%	22.1%	23.2%	21.7%	15.4%	12.8%	18.8%	24.5%
Others	14.4%	10.4%	6.4%	14.3%	10.4%	29.5%	19.3%	7.2%
<b>Juvenile Dependency: # Resolved</b>	<b>305</b>	<b>227</b>	<b>277</b>	<b>272</b>	<b>228</b>	<b>259</b>	<b>273</b>	<b>282</b>
Finding of Dependency	72.5%	58.6%	74.0%	68.8%	70.2%	69.9%	62.3%	68.4%
Dismissal	26.9%	40.5%	26.0%	30.9%	28.5%	29.7%	37.7%	30.5%
Others	0.7%	0.9%	0.0%	0.4%	1.3%	0.4%	0.0%	1.1%
<b>Juvenile ARY/CHINS: # Resolved</b>	<b>92</b>	<b>82</b>	<b>76</b>	<b>58</b>	<b>67</b>	<b>77</b>	<b>56</b>	<b>42</b>
Approve of Petition	41.3%	40.2%	46.1%	53.5%	56.7%	32.5%	51.8%	50.0%
Dismissal	58.7%	59.8%	54.0%	43.1%	43.3%	66.2%	48.2%	50.0%
Others	0.0%	0.0%	0.0%	3.5%	0.0%	1.3%	0.0%	0.0%
<b>Juvenile Truancy: # Resolved</b>	<b>282</b>	<b>514</b>	<b>743</b>	<b>219</b>	<b>282</b>	<b>347</b>	<b>328</b>	<b>192</b>
Approve of Petition	26.6%	16.7%	0.0%	5.5%	21.3%	15.9%	0.0%	18.8%
Dismissal	73.4%	82.5%	38.2%	94.5%	78.4%	83.9%	100%	81.3%
Others	0.0%	0.8%	61.8%	0.0%	0.4%	0.3%	0.0%	0.0%
<b>Juvenile Offender: # Resolved</b>	<b>754</b>	<b>747</b>	<b>664</b>	<b>492</b>	<b>651</b>	<b>619</b>	<b>561</b>	<b>522</b>
Resolved by Trial (Fact Finding)	5.6%	7.1%	3.3%	5.7%	7.8%	5.3%	3.9%	6.3%
Resolved by Guilty Plea	40.2%	39.2%	35.2%	38.0%	40.6%	42.8%	42.1%	40.8%
Dismissal	49.7%	45.5%	42.3%	39.0%	36.9%	31.7%	35.8%	37.9%
Deferred Disposition (DDSP)	NA	4.7%	15.5%	11.8%	11.7%	17.1%	15.3%	12.8%
Others (including Deferred Prosecution)	4.5%	3.5%	3.6%	5.5%	3.1%	3.1%	3.9%	2.1%
<b>Criminal RALJ: # Resolved</b>	<b>50</b>	<b>46</b>	<b>47</b>	<b>46</b>	<b>46</b>	<b>46</b>	<b>46</b>	<b>51</b>
RALJ Decision	56.0%	73.9%	70.2%	80.4%	73.9%	76.1%	56.5%	51.0%
Dismissal	28.0%	19.6%	27.7%	15.2%	26.1%	21.7%	34.8%	29.4%
Others	16.0%	6.5%	2.1%	4.4%	0.0%	2.2%	8.7%	19.6%
<b>Civil RALJ: # Resolved</b>	<b>15</b>	<b>13</b>	<b>13</b>	<b>13</b>	<b>8</b>	<b>12</b>	<b>23</b>	<b>17</b>
RALJ Decision	40.0%	53.9%	69.2%	23.1%	62.5%	41.7%	52.2%	30.8%
Dismissal	60.0%	46.1%	30.8%	38.5%	25.0%	50.0%	34.8%	69.2%
Others	0.0%	0.0%	0.0%	38.5%	12.5%	8.3%	13.0%	0.0%

\* Reflecting all documents received by 01/15/2013.

Chart 2-A. Quarterly Resolutions  
Total Judicial Cases Only ("Matters Filed with Clerk" excluded)

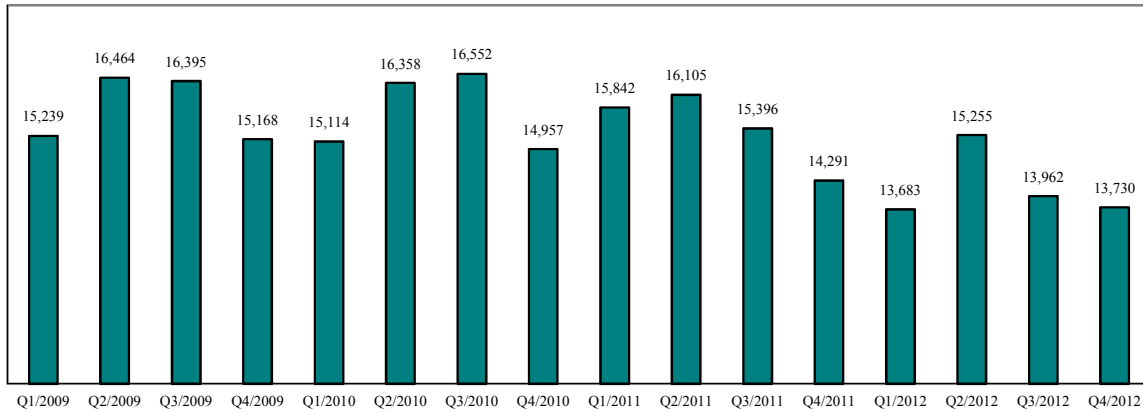
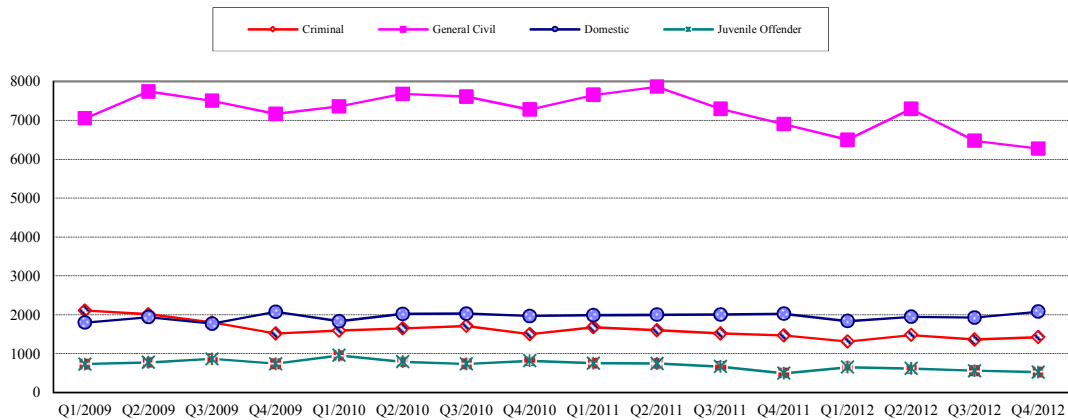


Chart 2-B. Quarterly Resolutions: Criminal, Dmestic, General Civil and Juvenile Offender Cases Only



\* Note: "General Civil" is specifically defined in this report. The category of "General Civil" does **not** include the following case types: domestic, probate, guardianship, adoption, paternity, mental illness, juvenile cases (dependency, at-risk youth, child-in-need of service), civil RALJ, and tax filings that don't require judicial resources ("matters filed with clerk"). Please check the Appendix for the cause codes in the "General Civil" category.

Table 3. Age of Resolved Cases  
King County Superior Court

Reporting Category	Age of Cases at Resolution							
	Q1/11	Q2/11	Q3/11	Q4/11	Q1/12	Q2/12	Q3/12	Q4/12*
<b>Criminal (excl. RALJ)</b>								
<b>Age (days)</b>								
50% Cases Resolved by Day	105	93	105	105	109	98	106	112
90% Cases Resolved by Day	357	302	361	347	380	370	373	309
98% Cases Resolved by Day	867	777	1097	722	752	734	697	736
<b>Comparison with Court Standard of</b>								
90% in 4 months	57%	63%	56%	56%	55%	58%	56%	54%
98% in 6 months	73%	77%	72%	72%	69%	73%	72%	73%
100% in 9 months	85%	88%	84%	85%	83%	84%	85%	87%
<b>General Civil <sup>(1)</sup></b>								
<b>Age (days)</b>								
50% Cases Resolved by Day	28	22	26	34	28	26	27	29
90% Cases Resolved by Day	518	494	491	502	481	498	514	504
98% Cases Resolved by Day	713	702	672	705	674	712	728	735
<b>Comparison with Court Standard of</b>								
90% in 12 months	84%	85%	86%	83%	85%	85%	84%	83%
98% in 18 months	93%	94%	95%	93%	91%	93%	92%	92%
100% in 24 months	98%	98%	99%	98%	99%	98%	97%	98%
<b>Domestic</b>								
<b>Age (days)</b>								
50% Cases Resolved by Day	182	166	162	158	172	175	169	170
90% Cases Resolved by Day	394	385	390	384	395	378	385	391
98% Cases Resolved by Day	579	599	2641	628	657	581	589	643
<b>Comparison with Court Standard of</b>								
90% in 8 months	63%	64%	67%	69%	65%	64%	64%	64%
98% in 10 months	72%	73%	74%	76%	73%	73%	72%	73%
100% in 14 months	92%	91%	92%	92%	92%	92%	93%	97%
<b>Probate</b>								
<b>Age (days)</b>								
50% Cases Resolved by Day	0	0	0	0	0	0	0	0
90% Cases Resolved by Day	15	15	12	6	4	6	9	4
98% Cases Resolved by Day	283	401	281	165	87	125	151	151
<b>Comparison with Court Standard of</b>								
90% in 8 months	98%	97%	97%	98%	99%	98%	99%	98%
98% in 18 months	99%	99%	99%	99%	99%	99%	100%	99%
100% in 36 months	99%	99%	100%	100%	100%	100%	100%	99%
<b>Guardianship</b>								
<b>Age (days)</b>								
50% Cases Resolved by Day	64	63	62	60	75	57	65	57
90% Cases Resolved by Day	237	469	191	203	213	207	158	166
98% Cases Resolved by Day	576	800	535	644	521	601	555	614
<b>Comparison with Court Standard of</b>								
90% in 8 months	90%	82%	92%	92%	92%	92%	90%	93%
98% in 18 months	98%	94%	98%	97%	98%	97%	97%	98%
100% in 36 months	100%	99%	100%	100%	100%	99%	99%	100%
<b>Adoption</b>								
<b>Age (days)</b>								
50% Cases Resolved by Day	67	46	70	31	75	89	81	52
90% Cases Resolved by Day	658	259	260	259	178	270	253	206
98% Cases Resolved by Day	1421	735	829	332	362	896	511	910
<b>Comparison with Court Standard of</b>								
90% in 8 months	80%	89%	90%	88%	95%	64%	88%	92%
98% in 10 months	82%	91%	92%	89%	95%	71%	93%	93%
100% in 14 months	83%	95%	93%	93%	100%	98%	97%	94%
<b>Paternity</b>								
<b>Age (days)</b>								
50% Cases Resolved by Day	160	121	128	117	134	111	152	155
90% Cases Resolved by Day	287	253	290	244	245	285	271	272
98% Cases Resolved by Day	435	346	441	441	470	418	407	435
<b>Comparison with Court Standard of</b>								
90% in 8 months	84%	89%	85%	89%	89%	87%	82%	84%
98% in 10 months	91%	97%	92%	94%	93%	93%	93%	93%
100% in 14 months	98%	100%	97%	97%	96%	98%	99%	98%



Table 3 (cont.) Age of Resolved Cases

King County Superior Court

Reporting Category	Age of Cases at Resolution							
	Q1/11	Q2/11	Q3/11	Q4/11	Q1/12	Q2/12	Q3/12	Q4/12*
<b>Mental Illness**</b>								
<b>Age (days)</b>								
50% Cases Resolved by Day	3	3	2	3	3	4	3	3
90% Cases Resolved by Day	15	11	8	14	10	1553	182	10
98% Cases Resolved by Day	324	29	16	449	81	2397	417	820
<b>Juvenile Dependency</b>								
<b>Age (days)</b>								
50% Cases Resolved by Day	133	99	91	129	107	98	94	104
90% Cases Resolved by Day	495	470	329	573	328	391	432	839
98% Cases Resolved by Day	1704	3421	648	1553	889	763	993	1014
<b>Comparison with Court Standard of</b>								
90% in 8 months	62%	82%	88%	75%	85%	84%	80%	81%
98% in 10 months	69%	84%	89%	77%	88%	88%	83%	84%
100% in 14 months	83%	88%	93%	86%	92%	90%	90%	86%
<b>Juvenile ARY/CHINS</b>								
<b>Age (days)</b>								
50% Cases Resolved by Day	26	26	35	36	27	28	44	73
90% Cases Resolved by Day	257	226	310	231	111	232	245	282
98% Cases Resolved by Day	1037	330	644	646	199	329	293	1637
<b>Comparison with Court Standard of</b>								
90% in 8 months	87%	91%	93%	94%	98%	82%	88%	85%
98% in 10 months	91%	94%	94%	96%	99%	94%	99%	89%
100% in 14 months	98%	100%	96%	96%	100%	99%	100%	95%
<b>Juvenile Truancy**</b>								
<b>Age (days)</b>								
50% Cases Resolved by Day	13	22	48	19	22	22	68	27
90% Cases Resolved by Day	46	70	2401	204	77	65	158	198
98% Cases Resolved by Day	259	148	2775	282	228	128	442	324
<b>Juvenile Offender</b>								
<b>Age (days)</b>								
50% Cases Resolved by Day	72	69	78	69	75	64	69	73
90% Cases Resolved by Day	203	220	219	199	228	173	175	258
98% Cases Resolved by Day	626	593	869	813	565	648	768	935
<b>Comparison with Court Standard of</b>								
90% in 4 months	71%	79%	73%	74%	74%	82%	78%	75%
98% in 6 months	87%	86%	86%	88%	86%	90%	85%	86%
100% in 9 months	93%	93%	92%	89%	92%	94%	95%	93%
<b>Criminal RALJ</b>								
<b>Age (days)</b>								
50% Cases Resolved by Day	224	245	257	253	244	267	258	254
90% Cases Resolved by Day	323	423	360	415	347	428	603	382
98% Cases Resolved by Day	758	834	427	784	373	689	953	517
<b>Comparison with Court Standard of</b>								
90% in 4 months	20%	7%	13%	0%	2%	9%	4%	18%
98% in 5 months	22%	7%	13%	4%	4%	9%	6%	18%
100% in 6 months	26%	14%	15%	6%	4%	9%	6%	20%
<b>Civil RALJ</b>								
<b>Age (days)</b>								
50% Cases Resolved by Day	172	163	163	179	170	179	234	202
90% Cases Resolved by Day	379	283	210	205	225	364	1018	1030
98% Cases Resolved by Day	504	612	247	210	225	405	3542	1859
<b>Comparison with Court Standard of</b>								
90% in 4 months	20%	0%	15%	31%	13%	8%	0%	0%
98% in 5 months	67%	23%	23%	31%	13%	8%	9%	15%
100% in 6 months	73%	69%	85%	54%	76%	13%	31%	23%

\* Reflecting all documents received by 01/15/2013.

\*\* No standard yet.

Table 4. Active Pending Caseload Statistics  
King County Superior Court

Reporting Category	Q1/11	Q2/11	Q3/11	Q4/11	Q1/12	Q2/12	Q3/12	Q4/12*
<b>Total (incl. RALJ)</b>								
Previous Pending (+)	21051	20676	20219	20411	19797	20235	20098	19729
New Filing (+)	15403	14972	14437	13473	14229	14430	13080	13064
Resolved (-)	15842	16070	15396	14291	13683	15255	13962	13730
<b>End Pending</b>	<b>20676</b>	<b>20219</b>	<b>20411</b>	<b>19797</b>	<b>20235</b>	<b>20098</b>	<b>19729</b>	<b>19396</b>
<b>Resolution Rate**</b>	<b>1.023</b>	<b>1.073</b>	<b>1.066</b>	<b>1.061</b>	<b>0.962</b>	<b>1.057</b>	<b>1.067</b>	<b>1.051</b>
<b>Criminal (excl. RALJ)</b>								
Previous Pending (+)	2791	2730	2671	2661	2549	2715	2798	2860
New Filing (+)	1655	1480	1518	1332	1538	1585	1513	1305
Resolved (-)	1680	1599	1522	1466	1309	1477	1365	1423
<b>End Pending</b>	<b>2730</b>	<b>2671</b>	<b>2661</b>	<b>2549</b>	<b>2715</b>	<b>2798</b>	<b>2860</b>	<b>2780</b>
<b>Resolution Rate**</b>	<b>1.015</b>	<b>1.080</b>	<b>1.003</b>	<b>1.101</b>	<b>0.851</b>	<b>0.932</b>	<b>0.902</b>	<b>1.090</b>
<b>General Civil</b>								
Previous Pending (+)	9883	9594	9279	9597	9153	9243	8912	8611
New Filing (+)	6984	7115	7160	6214	6400	6576	5844	5650
Resolved (-)	7652	7866	7293	6905	6502	7295	6473	6274
<b>End Pending</b>	<b>9594</b>	<b>9279</b>	<b>9597</b>	<b>9153</b>	<b>9243</b>	<b>8912</b>	<b>8611</b>	<b>8431</b>
<b>Resolution Rate**</b>	<b>1.096</b>	<b>1.400</b>	<b>1.143</b>	<b>1.111</b>	<b>1.016</b>	<b>1.109</b>	<b>1.108</b>	<b>1.110</b>
<b>Asbestos Cases (civil) <sup>(1)</sup></b>								
Previous Pending (+)	86	91	86	90	85	81	81	71
New Filing (+)	9	15	7	8	7	9	8	7
Resolved (-)	4	21	8	18	12	11	36	31
<b>End Pending</b>	<b>91</b>	<b>86</b>	<b>90</b>	<b>85</b>	<b>81</b>	<b>81</b>	<b>71</b>	<b>76</b>
<b>Resolution Rate**</b>	<b>0.444</b>	<b>1.106</b>	<b>1.019</b>	<b>2.250</b>	<b>1.714</b>	<b>1.212</b>	<b>4.500</b>	<b>4.429</b>
<b>Domestic</b>								
Previous Pending (+)	4453	4479	4532	4538	4421	4556	4544	4637
New Filing (+)	1993	2015	1988	1865	1961	1913	1982	1818
Resolved (-)	1991	2002	2004	2024	1838	1947	1929	2081
<b>End Pending</b>	<b>4479</b>	<b>4532</b>	<b>4538</b>	<b>4421</b>	<b>4556</b>	<b>4544</b>	<b>4637</b>	<b>4458</b>
<b>Resolution Rate**</b>	<b>0.999</b>	<b>0.994</b>	<b>1.008</b>	<b>1.085</b>	<b>0.937</b>	<b>1.018</b>	<b>0.973</b>	<b>1.145</b>
<b>Probate</b>								
Previous Pending (+)	579	555	515	531	559	579	631	655
New Filing (+)	1490	1462	1261	1204	1405	1453	1262	1365
Resolved (-)	1495	1497	1265	1200	1355	1438	1266	1336
<b>End Pending</b>	<b>555</b>	<b>515</b>	<b>531</b>	<b>559</b>	<b>579</b>	<b>631</b>	<b>655</b>	<b>615</b>
<b>Resolution Rate**</b>	<b>1.003</b>	<b>1.024</b>	<b>1.003</b>	<b>0.997</b>	<b>0.964</b>	<b>0.990</b>	<b>1.003</b>	<b>0.979</b>
<b>Guardianship</b>								
Previous Pending (+)	248	242	250	250	261	276	277	274
New Filing (+)	204	209	220	203	204	247	216	215
Resolved (-)	207	203	222	190	180	246	222	219
<b>End Pending</b>	<b>242</b>	<b>250</b>	<b>250</b>	<b>261</b>	<b>276</b>	<b>277</b>	<b>274</b>	<b>248</b>
<b>Resolution Rate**</b>	<b>1.015</b>	<b>0.971</b>	<b>1.009</b>	<b>0.936</b>	<b>0.882</b>	<b>0.996</b>	<b>1.028</b>	<b>1.019</b>
<b>Adoption</b>								
Previous Pending (+)	215	224	226	211	192	226	230	240
New Filing (+)	163	173	134	218	119	122	120	149
Resolved (-)	154	173	151	237	83	118	113	190
<b>End Pending</b>	<b>224</b>	<b>226</b>	<b>211</b>	<b>192</b>	<b>226</b>	<b>230</b>	<b>240</b>	<b>199</b>
<b>Resolution Rate**</b>	<b>0.945</b>	<b>1.000</b>	<b>1.127</b>	<b>1.087</b>	<b>0.697</b>	<b>0.967</b>	<b>0.942</b>	<b>1.275</b>
<b>Paternity</b>								
Previous Pending (+)	436	369	372	401	377	456	468	448
New Filing (+)	264	247	298	230	334	299	255	273
Resolved (-)	332	250	270	256	257	285	275	230
<b>End Pending</b>	<b>369</b>	<b>372</b>	<b>401</b>	<b>377</b>	<b>456</b>	<b>468</b>	<b>448</b>	<b>500</b>
<b>Resolution Rate**</b>	<b>1.258</b>	<b>1.012</b>	<b>0.906</b>	<b>1.113</b>	<b>0.769</b>	<b>0.953</b>	<b>1.078</b>	<b>0.842</b>

\* Reflecting all documents received by 01/15/2013.

\*\* A value of "Resolution Rate" less than one indicates the resolution pace is slower than the filing pace.

Table 4 (cont.) Active Pending Caseload Statistics  
King County Superior Court

Reporting Category		Q1/11	Q2/11	Q3/11	Q4/11	Q1/12	Q2/12	Q3/12	Q4/12*
<b>Mental Illness</b>									
Previous Pending	(+)	463	454	463	548	530	540	350	281
New Filing	(+)	827	873	926	878	888	883	926	894
Resolved	(-)	829	865	841	895	865	1078	996	844
<b>End Pending</b>		<b>454</b>	<b>463</b>	<b>548</b>	<b>530</b>	<b>540</b>	<b>350</b>	<b>281</b>	<b>311</b>
<b>Resolution Rate**</b>		<b>1.002</b>	<b>0.991</b>	<b>0.908</b>	<b>1.019</b>	<b>0.974</b>	<b>1.221</b>	<b>1.076</b>	<b>0.944</b>
<b>Juvenile Dependency</b>									
Previous Pending	(+)	446	442	503	518	522	503	534	523
New Filing	(+)	288	271	261	240	255	271	235	289
Resolved	(-)	305	227	277	272	228	259	273	282
<b>End Pending</b>		<b>442</b>	<b>503</b>	<b>518</b>	<b>522</b>	<b>503</b>	<b>534</b>	<b>523</b>	<b>516</b>
<b>Resolution Rate**</b>		<b>1.059</b>	<b>0.838</b>	<b>1.061</b>	<b>1.133</b>	<b>0.894</b>	<b>0.956</b>	<b>1.162</b>	<b>0.976</b>
<b>Juvenile ARY/CHINS</b>									
Previous Pending	(+)	68	71	90	92	94	91	98	89
New Filing	(+)	89	90	62	62	70	77	43	52
Resolved	(-)	92	82	76	58	67	77	56	42
<b>End Pending</b>		<b>71</b>	<b>90</b>	<b>92</b>	<b>94</b>	<b>91</b>	<b>98</b>	<b>89</b>	<b>104</b>
<b>Resolution Rate**</b>		<b>1.034</b>	<b>0.911</b>	<b>1.226</b>	<b>0.935</b>	<b>0.957</b>	<b>1.000</b>	<b>1.302</b>	<b>0.808</b>
<b>Juvenile Truancy</b>									
Previous Pending	(+)	313	398	329	129	165	145	364	208
New Filing	(+)	606	311	16	414	451	355	19	446
Resolved	(-)	282	514	763	219	282	347	328	192
<b>End Pending</b>		<b>398</b>	<b>329</b>	<b>129</b>	<b>165</b>	<b>145</b>	<b>364</b>	<b>208</b>	<b>308</b>
<b>Resolution Rate**</b>		<b>0.465</b>	<b>1.653</b>	<b>46.438</b>	<b>0.529</b>	<b>0.625</b>	<b>0.977</b>	<b>17.263</b>	<b>0.430</b>
<b>Juvenile Offender</b>									
Previous Pending	(+)	913	863	726	670	723	653	631	655
New Filing	(+)	762	642	527	554	538	576	595	532
Resolved	(-)	754	743	664	492	651	619	561	522
<b>End Pending</b>		<b>865</b>	<b>726</b>	<b>670</b>	<b>723</b>	<b>653</b>	<b>631</b>	<b>655</b>	<b>663</b>
<b>Resolution Rate**</b>		<b>0.990</b>	<b>1.164</b>	<b>1.260</b>	<b>0.888</b>	<b>1.210</b>	<b>1.075</b>	<b>0.943</b>	<b>0.981</b>
<b>Criminal RALJ</b>									
Previous Pending	(+)	126	131	144	145	132	132	136	134
New Filing	(+)	54	55	49	33	47	47	43	55
Resolved	(-)	50	46	47	46	46	46	46	51
<b>End Pending</b>		<b>131</b>	<b>144</b>	<b>145</b>	<b>132</b>	<b>132</b>	<b>136</b>	<b>134</b>	<b>142</b>
<b>Resolution Rate**</b>		<b>0.926</b>	<b>0.836</b>	<b>0.959</b>	<b>1.394</b>	<b>0.979</b>	<b>0.979</b>	<b>1.070</b>	<b>0.927</b>
<b>Civil RALJ</b>									
Previous Pending	(+)	31	31	33	30	34	39	44	43
New Filing	(+)	15	14	10	18	12	17	19	14
Resolved	(-)	15	13	13	13	8	12	23	13
<b>End Pending</b>		<b>31</b>	<b>33</b>	<b>30</b>	<b>34</b>	<b>39</b>	<b>44</b>	<b>43</b>	<b>45</b>
<b>Resolution Rate**</b>		<b>1.000</b>	<b>0.929</b>	<b>1.300</b>	<b>0.702</b>	<b>0.667</b>	<b>0.706</b>	<b>1.211</b>	<b>0.929</b>

\* Reflecting all documents received by 01/15/2013.

\*\* A value of "Resolution Rate" less than one indicates the resolution pace is slower than the filing pace.

Chart 4-A. Active Pending Caseload at Quarter End  
Total Judicial Cases Only ("Matters Filed with Clerk" excluded)

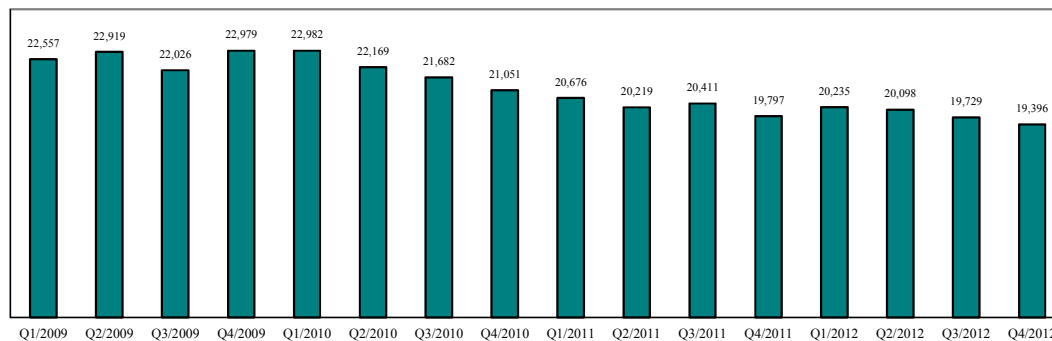


Chart 4-B. Active Pending Caseload at Quarter End: Domestic and General Civil Cases Only

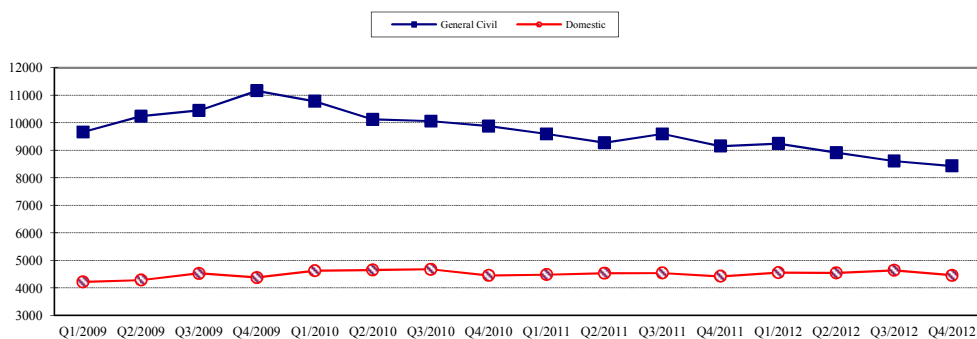
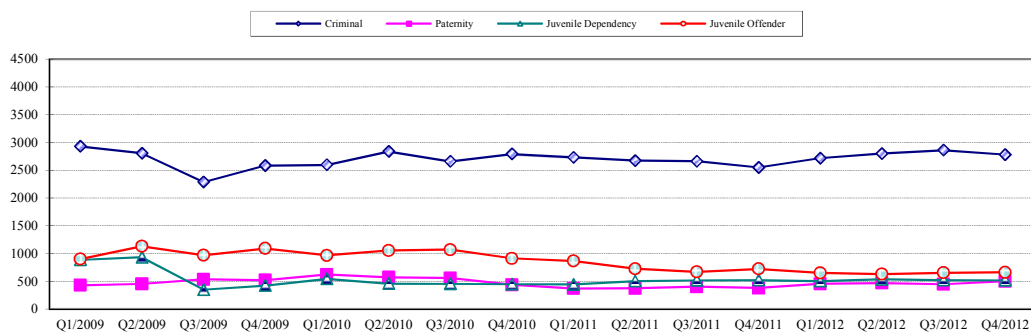


Chart 4-C. Active Pending Caseload at Quarter End:  
Criminal, Juvenile Offender, Paternity and Dependency Cases Only



\* Note: "General Civil" is specifically defined in this report. The category of "General Civil" does **not** include the following case types: domestic, probate, guardianship, adoption, paternity, mental illness, juvenile cases (dependency, at-risk youth, child-in-need of service), civil RALJ, and tax filings that don't require judicial resources ("matters filed with clerk"). Please check the Appendix for the cause codes in the "General Civil" category.

Table 5. Age of Pending Cases

King County Superior Court

Reporting Category	Age of Pending Cases and # of Cases in Each Age Interval							
	Q1/11	Q2/11	Q3/11	Q4/11	Q1/12	Q2/12	Q3/12	Q4/12*
<b>Criminal (excl. RALJ): # of Cases</b>	<b>2730</b>	<b>2671</b>	<b>2661</b>	<b>2549</b>	<b>2715</b>	<b>2798</b>	<b>2860</b>	<b>2780</b>
<b>Age (days)</b>								
Median (50 percentile)	95	106	109	116	103	104	110	126
95 percentile	596	570	577	601	648	691	692	706
<b># of Cases in Age Interval</b>								
0 - 60 days (0 - 2 months)	997	876	854	814	980	928	844	760
61 - 120 days (3 - 4 months)	569	571	541	474	487	619	676	590
121 - 180 days (5 - 6 months)	383	396	348	343	348	362	405	422
181 - 270 days (7 - 9 months)	293	312	354	310	288	269	330	363
> 270 days (> 9 months)	488	516	564	608	612	620	605	645
<b>General Civil: # of Cases</b>	<b>9594</b>	<b>9279</b>	<b>9597</b>	<b>9153</b>	<b>9243</b>	<b>8912</b>	<b>8611</b>	<b>8431</b>
<b>Age (days)</b>								
Median (50 percentile)	171	164	166	173	173	172	188	189
95 percentile	567	575	576	578	597	594	601	641
<b># of Cases in Age Interval</b>								
0 - 120 days (0 - 4 months)	3884	3724	3858	3508	3671	3538	3148	3108
121 - 240 days (5 - 8 months)	1964	1976	2191	2089	1903	1846	2020	1804
241 - 360 days (9 - 12 months)	1574	1463	1411	1548	1513	1366	1327	1332
361 - 540 days (13 - 18 months)	1582	1538	1514	1397	1479	1524	1473	1410
541 - 720 days (19 - 24 months)	410	404	438	425	468	422	405	487
> 720 days (> 24 months)	180	174	185	186	209	216	238	290
<b>Asbestos Cases (civil)<sup>(1)</sup> : # of Cases</b>	<b>91</b>	<b>86</b>	<b>90</b>	<b>85</b>	<b>81</b>	<b>81</b>	<b>71</b>	<b>76</b>
<b>Age (days)</b>								
Median (50 percentile)	701	542	550	485	522	563	410	524
95 percentile	2513	2599	2416	1802	1893	1984	1747	3168
<b># of Cases in Age Interval</b>								
0 - 120 days (0 - 4 months)	10	23	13	7	7	12	11	7
121 - 240 days (5 - 8 months)	6	1	17	14	8	5	14	10
241 - 360 days (9 - 12 months)	6	7	3	16	16	12	8	11
361 - 540 days (13 - 18 months)	12	12	11	9	11	11	11	11
541 - 720 days (19 - 24 months)	14	10	11	12	9	7	6	7
> 720 days (> 24 months)	43	33	35	27	30	34	21	30
<b>Domestic: # of Cases</b>	<b>4479</b>	<b>4532</b>	<b>4538</b>	<b>4421</b>	<b>4556</b>	<b>4544</b>	<b>4637</b>	<b>4458</b>
<b>Age (days)</b>								
Median (50 percentile)	115	107	114	122	122	118	122	125
95 percentile	473	490	487	527	491	475	516	528
<b># of Cases in Age Interval</b>								
0 - 120 days (0 - 4 months)	2312	2443	2379	2188	2258	2275	2313	2158
121 - 240 days (5 - 8 months)	1114	1056	1226	1250	1244	1193	1274	1185
241 - 360 days (9 - 12 months)	629	603	514	579	653	648	605	675
361 - 540 days (13 - 18 months)	241	243	227	201	211	236	239	227
> 540 days (> 18 months)	183	187	192	212	190	192	206	213
<b>Probate: # of Cases</b>	<b>555</b>	<b>515</b>	<b>531</b>	<b>559</b>	<b>579</b>	<b>631</b>	<b>655</b>	<b>615</b>
<b>Age (days)</b>								
Median (50 percentile)	508	602	659	706	663	608	605	697
95 percentile	1926	2040	2112	2201	2175	2218	2243	2335
<b># of Cases in Age Interval</b>								
0 - 120 days (0 - 4 months)	109	99	100	104	119	122	93	109
121 - 240 days (5 - 8 months)	33	28	44	54	74	70	85	67
241 - 360 days (9 - 12 months)	47	31	20	37	38	65	68	59
361 - 540 days (13 - 18 months)	113	70	47	29	32	51	64	47
> 540 days (> 18 months)	253	287	320	335	316	323	345	333

Reflecting all documents received by 01/15/2013.

Table 5 (cont.). Age of Pending Cases

King County Superior Court

Reporting Category	Age of Pending Cases and # of Cases in Each Age Interval							
	Q1/11	Q2/11	Q3/11	Q4/11	Q1/12	Q2/12	Q3/12	Q4/12*
<b>Guardianship: # of Cases</b>	<b>242</b>	<b>250</b>	<b>250</b>	<b>261</b>	<b>276</b>	<b>277</b>	<b>274</b>	<b>248</b>
<b>Age (days)</b>								
Median (50 percentile)	71	67	60	80	60	62	73	69
95 percentile	679	617	652	507	550	538	605	543
<b># of Cases in Age Interval</b>								
0 - 120 days (0 - 4 months)	153	165	162	158	173	186	169	157
121 - 240 days (5 - 8 months)	33	39	38	46	48	25	37	36
241 - 360 days (9 - 12 months)	12	22	22	29	21	31	22	21
361 - 540 days (13 - 18 months)	24	8	13	16	20	22	28	21
> 540 days (> 18 months)	20	16	15	12	14	13	18	13
<b>Adoption: # of Cases</b>	<b>224</b>	<b>226</b>	<b>211</b>	<b>192</b>	<b>226</b>	<b>230</b>	<b>240</b>	<b>199</b>
<b>Age (days)</b>								
Median (50 percentile)	123	119	150	141	150	145	172	271
95 percentile	2998	2900	2731	1619	1431	1220	1282	1706
<b># of Cases in Age Interval</b>								
0 - 120 days (0 - 4 months)	108	113	99	92	102	107	90	55
121 - 240 days (5 - 8 months)	39	31	30	25	41	35	51	34
241 - 360 days (9 - 12 months)	19	24	22	23	19	18	21	28
361 - 540 days (13 - 18 months)	23	16	16	12	22	25	20	21
> 540 days (> 18 months)	35	42	44	40	42	45	58	61
<b>Paternity: # of Cases</b>	<b>369</b>	<b>372</b>	<b>401</b>	<b>377</b>	<b>456</b>	<b>468</b>	<b>448</b>	<b>500</b>
<b>Age (days)</b>								
Median (50 percentile)	85	90	74	94	59	85	95	92
95 percentile	277	312	269	277	264	263	235	251
<b># of Cases in Age Interval</b>								
0 - 120 days (0 - 4 months)	240	246	281	225	318	320	291	303
121 - 240 days (5 - 8 months)	102	88	96	119	106	116	138	165
241 - 360 days (9 - 12 months)	22	28	13	22	25	25	12	25
361 - 540 days (13 - 18 months)	3	7	10	9	6	5	6	5
> 540 days (> 18 months)	2	3	1	2	1	2	1	2
<b>Mental Illness: # of Cases</b>	<b>454</b>	<b>463</b>	<b>548</b>	<b>530</b>	<b>540</b>	<b>350</b>	<b>281</b>	<b>311</b>
<b>Age (days)</b>								
Median (50 percentile)	757	836	770	894	962	186	97	104
95 percentile	2051	2138	2153	2246	2337	1334	1512	1595
<b># of Cases in Age Interval</b>								
0 - 120 days (0 - 4 months)	76	62	124	100	95	150	163	181
121 - 240 days (5 - 8 months)	19	27	32	63	49	42	27	93
> 240 days (> 8 months)	359	374	392	367	396	158	91	37
<b>Juvenile Dependency: # of Cases</b>	<b>442</b>	<b>503</b>	<b>518</b>	<b>522</b>	<b>503</b>	<b>534</b>	<b>523</b>	<b>516</b>
<b>Age (days)</b>								
Median (50 percentile)	71	100	131	129	110	108	150	113
95 percentile	529	560	652	711	788	878	949	1026
<b># of Cases in Age Interval</b>								
0 - 60 days (0 - 2 months)	204	182	166	148	156	185	137	169
61 - 120 days (3 - 4 months)	96	22	79	91	102	100	93	103
121 - 180 days (5 - 6 months)	36	90	61	69	58	46	67	39
181 - 270 days (7 - 9 months)	41	45	97	36	48	44	46	50
> 270 days (> 9 months)	65	77	115	178	139	159	180	155
<b>Juvenile ARY/CHINS: # of Cases</b>	<b>71</b>	<b>90</b>	<b>92</b>	<b>94</b>	<b>91</b>	<b>98</b>	<b>89</b>	<b>104</b>
<b>Age (days)</b>								
Median (50 percentile)	401	136	217	222	244	206	333	209
95 percentile	1872	1947	2039	2131	2222	2313	2405	2444
<b># of Cases in Age Interval</b>								
0 - 60 days (0 - 2 months)	26	29	19	26	29	29	19	24
61 - 120 days (3 - 4 months)	6	14	11	11	6	11	10	17
121 - 180 days (5 - 6 months)	2	6	15	8	6	6	7	5
181 - 270 days (7 - 9 months)	0	5	6	7	7	9	6	11
> 270 days (> 9 months)	37	36	41	42	43	43	47	47

\* Reflecting all documents received by 01/15/2013.

Table 5 (cont.). Age of Pending Cases

King County Superior Court

Reporting Category	Age of Pending Cases and # of Cases in Each Age Interval							
	Q1/11	Q2/11	Q3/11	Q4/11	Q1/12	Q2/12	Q3/12	Q4/12*
<b>Juvenile Truancy: # of Cases</b>	<b>398</b>	<b>329</b>	<b>129</b>	<b>165</b>	<b>145</b>	<b>364</b>	<b>208</b>	<b>308</b>
<b>Age (days)</b>								
Median (50 percentile)	110	561	137	46	11	69	158	67
95 percentile	2662	2768	298	381	472	440	606	588
<b># of Cases in Age Interval</b>								
0 - 60 days (0 - 2 months)	180	79	16	96	97	128	11	151
61 - 120 days (3 - 4 months)	24	38	5	4	4	193	16	18
121 - 180 days (5 - 6 months)	7	17	64	1	13	1	129	0
181 - 270 days (7 - 9 months)	0	11	32	41	0	11	21	93
> 270 days (> 9 months)	187	184	12	23	31	31	31	46
<b>Juvenile Offender: # of Cases</b>	<b>865</b>	<b>726</b>	<b>670</b>	<b>723</b>	<b>653</b>	<b>631</b>	<b>655</b>	<b>663</b>
<b>Age (days)</b>								
Median (50 percentile)	63	73	78	66	59	59	63	77
95 percentile	613	629	735	657	682	738	800	552
<b># of Cases in Age Interval</b>								
0 - 60 days (0 - 2 months)	429	315	289	344	332	320	312	265
61 - 120 days (3 - 4 months)	145	151	118	132	129	129	155	194
121 - 180 days (5 - 6 months)	55	70	62	59	50	49	51	81
181 - 270 days (7 - 9 months)	71	46	54	38	34	40	25	43
> 270 days (> 9 months)	165	144	147	150	108	93	112	80
<b>Criminal RALJ: # of Cases</b>	<b>131</b>	<b>144</b>	<b>145</b>	<b>132</b>	<b>132</b>	<b>136</b>	<b>134</b>	<b>142</b>
<b>Age (days)</b>								
Median (50 percentile)	140	139	136	162	141	144	139	147
95 percentile	351	311	368	334	424	510	371	400
<b># of Cases in Age Interval</b>								
0 - 60 days (0 - 2 months)	34	38	30	21	31	36	29	27
61 - 120 days (3 - 4 months)	26	28	33	25	25	19	29	30
121 - 180 days (5 - 6 months)	25	32	29	28	23	35	25	28
181 - 270 days (7 - 9 months)	30	25	35	36	31	24	33	35
> 270 days (> 9 months)	16	21	18	22	22	22	18	22
<b>Civil RALJ: # of Cases</b>	<b>31</b>	<b>33</b>	<b>30</b>	<b>34</b>	<b>39</b>	<b>44</b>	<b>43</b>	<b>45</b>
<b>Age (days)</b>								
Median (50 percentile)	107	94	152	120	125	147	102	134
95 percentile	1289	1380	1472	1564	1655	961	837	431
<b># of Cases in Age Interval</b>								
0 - 60 days (0 - 2 months)	12	7	7	10	7	9	12	8
61 - 120 days (3 - 4 months)	8	12	3	7	10	11	12	11
121 - 180 days (5 - 6 months)	3	6	12	5	7	6	6	13
181 - 270 days (7 - 9 months)	1	2	1	2	3	7	6	7
> 270 days (> 9 months)	7	6	7	10	12	11	7	6

\* Reflecting all documents received by 01/15/2013.

Table 6. Seattle vs. Regional Justice Center (KNT): Filing, Resolution, Pending Caseload (%)

King County Superior Court

	Q4/11		Q1/12		Q2/12		Q3/12		Q4/12	
	SEA	KNT	SEA	KNT	SEA	KNT	SEA	KNT	SEA	KNT
<b>Filings Total</b> <i>(excl. filings with clerk)</i>	<b>64%</b>	<b>36%</b>	<b>65%</b>	<b>35%</b>	<b>65%</b>	<b>35%</b>	<b>65%</b>	<b>35%</b>	<b>65%</b>	<b>35%</b>
Criminal (excl. RALJ)	54%	46%	59%	41%	58%	42%	56%	44%	52%	48%
General Civil (excl. RALJ)	58%	42%	59%	41%	57%	43%	57%	43%	57%	43%
Domestic	64%	36%	62%	38%	65%	35%	62%	38%	64%	36%
Probate	79%	21%	79%	21%	78%	22%	78%	22%	78%	22%
Guardianship	65%	35%	57%	43%	64%	36%	61%	39%	63%	37%
Adoption	73%	27%	81%	19%	73%	27%	78%	22%	75%	25%
Paternity	45%	55%	48%	52%	50%	50%	47%	53%	51%	49%
Mental Illness	100%	---	100%	---	100%	---	100%	---	100%	---
Juvenile Dependency	50%	50%	52%	48%	56%	44%	55%	45%	55%	45%
Juvenile ARY/CHINS	42%	58%	46%	54%	47%	53%	61%	39%	44%	56%
Juvenile Truancy	32%	68%	40%	60%	56%	44%	68%	32%	44%	56%
Juvenile Offender	100%	---	100%	---	100%	---	100%	---	100%	---
Criminal RALJ	88%	12%	96%	4%	92%	8%	98%	2%	93%	7%
Civil RALJ	89%	11%	67%	33%	77%	23%	100%	---	79%	21%
<b>Resolution Total</b> <i>(excl. filings with clerk)</i>	<b>65%</b>	<b>35%</b>	<b>65%</b>	<b>35%</b>	<b>64%</b>	<b>36%</b>	<b>64%</b>	<b>36%</b>	<b>65%</b>	<b>35%</b>
Criminal (excl. RALJ)	59%	41%	56%	44%	56%	44%	57%	43%	58%	42%
General Civil (excl. RALJ)	59%	41%	59%	41%	57%	43%	57%	43%	57%	43%
Domestic	65%	35%	60%	40%	62%	38%	63%	37%	64%	36%
Probate	78%	22%	79%	21%	78%	22%	78%	22%	78%	22%
Guardianship	61%	39%	62%	38%	61%	39%	57%	43%	66%	34%
Adoption	70%	30%	81%	19%	76%	24%	75%	25%	77%	23%
Paternity	45%	55%	49%	51%	52%	48%	41%	59%	48%	52%
Mental Illness	100%	---	100%	---	100%	---	100%	---	100%	---
Juvenile Dependency	47%	53%	40%	60%	46%	54%	48%	52%	64%	36%
Juvenile ARY/CHINS	55%	45%	43%	57%	39%	61%	41%	59%	48%	52%
Juvenile Truancy	56%	44%	38%	62%	27%	73%	47%	53%	62%	38%
Juvenile Offender	100%	---	100%	---	100%	---	100%	---	100%	---
Criminal RALJ	96%	4%	94%	6%	89%	11%	87%	13%	96%	4%
Civil RALJ	100%	---	75%	25%	67%	33%	87%	13%	65%	35%
<b>Pending Total</b> <i>(excl. filings with clerk)</i>	<b>66%</b>	<b>34%</b>	<b>67%</b>	<b>33%</b>	<b>67%</b>	<b>33%</b>	<b>67%</b>	<b>33%</b>	<b>66%</b>	<b>34%</b>
Criminal (excl. RALJ)	48%	52%	51%	49%	52%	48%	52%	48%	51%	49%
General Civil (excl. RALJ)	70%	30%	69%	31%	69%	31%	69%	31%	69%	31%
Domestic	60%	40%	61%	39%	62%	38%	61%	39%	61%	39%
Probate	85%	15%	86%	14%	86%	14%	86%	14%	85%	15%
Guardianship	64%	36%	61%	39%	64%	36%	66%	34%	60%	40%
Adoption	78%	22%	78%	22%	76%	24%	78%	22%	76%	24%
Paternity	45%	55%	45%	55%	44%	56%	48%	52%	49%	51%
Mental Illness	100%	---	100%	---	100%	---	100%	---	100%	---
Juvenile Dependency	56%	44%	65%	35%	68%	32%	68%	32%	63%	37%
Juvenile ARY/CHINS	64%	36%	69%	31%	69%	31%	79%	21%	71%	29%
Juvenile Truancy	49%	51%	46%	54%	64%	36%	72%	28%	64%	36%
Juvenile Offender	100%	---	100%	---	100%	---	100%	---	100%	---
Criminal RALJ	89%	11%	90%	10%	91%	9%	95%	5%	93%	7%
Civil RALJ	88%	12%	85%	15%	86%	14%	93%	7%	89%	11%

Reflecting all documents received by 01/15/2013.



Table 7. Quarterly Utilization of Pro Tem Judges/Commissioners <sup>(1)</sup>

Category	Q2/10	Q3/10	Q4/10	Q1/11	Q2/11	Q3/11	Q4/11	Q1/12	Q2/12	Q3/12	Q4/12
<b>Grand Total</b>	<b>1466</b>	<b>1029</b>	<b>1337</b>	<b>932</b>	<b>1354</b>	<b>850</b>	<b>1157</b>	<b>869</b>	<b>1173</b>	<b>1304</b>	<b>864</b>
<b>Judge FTE Equivalent <sup>(3)</sup></b>	<b>3.3</b>	<b>2.3</b>	<b>3.0</b>	<b>2.1</b>	<b>3.0</b>	<b>1.9</b>	<b>2.6</b>	<b>1.9</b>	<b>2.6</b>	<b>2.9</b>	<b>1.9</b>
<b>By Work Type</b>											
On Trial/Hearings	1282	859	1103	773	1110	552	856	367	747	695	302
On Preparation	184	168	235	159	200	151	250	231	247	320	164
Other or Unspecified Activity	0	2	0	0	43	147	51	272	179	289	397
<b>By Case Type</b>											
Criminal	20	0	62	43	23	0	14	17	28	38	17
Civil	570	541	692	590	654	487	501	266	543	468	336
Domestic	331	162	297	129	414	220	409	426	424	532	298
Probate	0	0	0	0	0	0	0	0	0	0	0
Guardianship	0	0	0	0	0	0	0	0	0	0	0
Adoption	0	0	0	0	0	0	0	0	0	0	0
Paternity	0	0	0	0	0	0	0	0	0	0	0
Mental Illness	0	0	0	0	0	0	0	0	0	0	0
Juvenile Dependency	59	69	47	34	34	79	178	138	137	194	79
Juvenile Truancy	87	43	30	54	84	24	0	0	16	0	30
Juvenile Offender	204	214	211	83	139	39	54	23	25	74	7
Other or Unspecified	195	0	0	0	7	0	0	0	0	0	98
<b>By Calendar Type</b>											
Criminal Plea	0	0	0	35	19	0	14	17	28	25	17
Criminal Trial	0	0	0	52	0	0	0	0	0	13	0
Civil Trial	29	30	66	0	22	83	20	25	70	49	0
Individual Calendar	0	0	0	0	0	0	0	0	0	0	0
Family Law	392	290	429	279	426	227	405	426	432	532	298
Ex Parte	292	273	316	234	343	312	206	133	255	332	255
Mental Illness	55	51	81	66	145	45	262	108	159	86	88
Juvenile Dependency	158	118	109	89	147	95	192	131	137	179	75
Juvenile CHINS/ARY	0	0	0	0	0	0	0	0	0	0	0
Juvenile Truancy	87	43	30	54	80	30	0	7	9	15	4
Juvenile Offender	204	214	211	83	139	39	44	23	25	74	30
Other or Unspecified	249	9	96	41	33	21	0	0	0	0	98
<b>By Reason</b>											
Congestion	612	222	303	227	164	159	306	125	174	86	66
Medical Coverage	134	132	215	255	91	114	134	73	81	199	102
Vacation	529	547	623	319	672	314	603	451	524	571	421
Training	424	129	196	131	155	227	85	191	324	154	84
Judicial Conference	12	0	0	0	272	0	0	0	51	25	0
Others	0	0	0	0	0	36	27	29	15	270	192

(1) This table is based on the time sheet for compensation

(2) Judge FTE Equivalent = # of hours / [7.5 hours/day \* 20 days/month \* 3 months] = # of hours/450.

*The statistics on Pro Tem judge/commissioner use provide information on the external help the court has obtained in order to handle the workload. The data are collected on the time sheet for compensation (therefore it does not include unpaid volunteering or visiting judges/commissioners). The database on Pro Tem judges/commissioners is managed by the Administrative Services Department (ASD) of King County Superior Court. The Pro Tem total hours presented in this section are provided quarterly by ASD.*

Table 8. Family Law Activity

	2ND QTR, 2011		3RD QTR, 2011		4TH QTR, 2011		1ST QTR, 2012		2ND QTR, 2012		3RD QTR, 2012		4TH QTR, 2012	
	HRGS	ORDS	HRGS	ORDS	HRGS	ORDS	HRGS	ORDS	HRGS	ORDS	HRGS	ORDS	HRGS	ORDS
<b>SEATTLE</b>														
FAM.LAW	869	2152	769	2220	765	2096	686	2255	663	2069	677	2241	410	2103
DAILY AVG.	14	35	13	36	13	34	11	37	11	34	11	37	7	34
PATERNITY	669	1763	465	1900	476	1602	523	1727	404	1622	386	1776	62	1668
DAILY AVG.	11	29	8	31	8	26	9	28	7	27	6	29	1	27
DOM. VIOL.	448	529	354	497	303	477	309	498	397	560	285	557	183	526
DAILY AVG.	7	9	6	8	5	8	5	8	7	9	5	9	3	9
	2ND QTR, 2011		3RD QTR, 2011		4TH QTR, 2011		1ST QTR, 2012		2ND QTR, 2012		3RD QTR, 2012		4TH QTR, 2012	
	HRGS	HRGS	HRGS	ORDS	HRGS	ORDS	HRGS	ORDS	HRGS	ORDS	HRGS	ORDS	HRGS	ORDS
<b>KENT</b>														
FAM.LAW	535	1745	519	1913	620	1759	808	1955	741	1859	620	1655	713	1714
DAILY AVG.	9	29	9	31	10	29	13	32	12	30	10	27	12	28
PATERNITY	361	1336	321	1281	380	1247	442	1279	406	1241	392	1313	376	1183
DAILY AVG.	6	22	5	21	6	20	7	21	7	20	6	22	6	19
DOM. VIOL.	360	491	373	571	381	512	373	467	438	526	455	543	433	516
DAILY AVG.	6	8	6	9	6	8	6	8	7	9	7	9	7	8
	2ND QTR, 2011		3RD QTR, 2011		4TH QTR, 2011		1ST QTR, 2012		2ND QTR, 2012		3RD QTR, 2012		4TH QTR, 2012	
	HRGS	ORDS	HRGS	ORDS	HRGS	ORDS	HRGS	ORDS	HRGS	ORDS	HRGS	ORDS	HRGS	ORDS
<b>GRAND</b>														
<b>TOTAL</b>	3242	8016	2801	8382	2925	7693	3141	8181	3049	7877	2815	8085	2177	7710
<b>OVERALL</b>														
<b>DAILY AVG.</b>	53	131	46	137	48	126	51	134	50	129	46	133	36	126

The statistics on family law and Ex Parte activity are obtained directly from SCOMIS using the appropriate docket codes.

Table 9. Ex Parte Activity

SEATTLE	4TH QTR, 2011		1ST QTR, 2012		2ND QTR, 2012		3RD QTR, 2012		4TH QTR, 2012	
	HRGS	ORDS	HRGS	ORDS	HRGS	ORDS	HRGS	ORDS	HRGS	ORDS
ADOP/PAT	191	532	86	233	101	294	121	317	139	463
DOM. VIOL.	29	301	21	355	24	369	22	423	9	372
OTH. CIVIL	360	562	327	589	237	573	223	513	284	495
DOMESTIC	889	2507	762	2163	730	2185	762	2255	832	2475
PROB/GDN	1114	2205	1116	2502	953	4188	957	3211	1226	2487
SUBTOTAL	2583	6107	2312	5842	2045	7609	2085	6719	2490	6292
DAILY AVG.	42	100	38	96	34	125	34	110	41	103

SEATTLE VIA CLERK (starting Jan 2009)	4TH QTR, 2011		1ST QTR, 2012		2ND QTR, 2012		3RD QTR, 2012		4TH QTR, 2012	
	----	ORDS	----	ORDS	----	ORDS	----	ORDS	----	ORDS
ADOP/PAT	----	216	----	118	----	134	----	137	----	153
DOM. VIOL.	----	3	----	3	----	2	----	5	----	3
OTH. CIVIL	----	8168	----	7957	----	8302	----	7567	----	6421
DOMESTIC	----	1232	----	1220	----	1417	----	1320	----	1339
PROB/GDN	----	690	----	715	----	830	----	720	----	743
SUBTOTAL	----	10309	----	10013	----	10685	----	9749	----	8659
DAILY AVG.	----	169	----	164	----	175	----	160	----	142

SEATTLE MAIL-IN	4TH QTR, 2011		1ST QTR, 2012		2ND QTR, 2012		3RD QTR, 2012		4TH QTR, 2012	
	----	ORDS	----	ORDS	----	ORDS	----	ORDS	----	ORDS
ADOP/PAT	----	2	----	2	----	2	----	0	----	0
DOM. VIOL.	----	0	----	0	----	0	----	0	----	0
OTH. CIVIL	----	153	----	142	----	135	----	105	----	142
DOMESTIC	----	55	----	28	----	42	----	45	----	37
PROB/GDN	----	63	----	84	----	85	----	74	----	84
SUBTOTAL	----	273	----	256	----	264	----	224	----	263
DAILY AVG.	----	4	----	4	----	4	----	4	----	4

Note: Ex Parte via Clerk started in January 2009.

Table 9 (cont). Ex Parte Activity

KENT	4TH QTR, 2011		1ST QTR, 2012		2ND QTR, 2012		3RD QTR, 2012		4TH QTR, 2012	
	HRGS	ORDS	HRGS	ORDS	HRGS	ORDS	HRGS	ORDS	HRGS	ORDS
ADOP/PAT	84	221	19	72	41	138	47	122	52	136
DOM. VIOL.	3	382	3	432	5	457	4	441	12	409
OTH. CIVIL	311	520	272	411	307	507	325	528	303	475
DOMESTIC	437	1548	425	1432	464	1441	449	1404	441	1375
PROB/GDN	435	855	375	837	430	1357	400	1090	382	833
SUBTOTAL	1270	3526	1094	3184	1247	3900	1225	3585	1190	3228
DAILY AVG.	21	58	18	52	20	64	20	59	20	53

KENT VIA CLERK (starting Jan 2009)	4TH QTR, 2011		1ST QTR, 2012		2ND QTR, 2012		3RD QTR, 2012		4TH QTR, 2012	
	----	ORDS	----	ORDS	----	ORDS	----	ORDS	----	ORDS
ADOP/PAT	----	37	----	37	----	37	----	48	----	51
DOM. VIOL.	----	3	----	1	----	2	----	1	----	0
OTH. CIVIL	----	1104	----	1196	----	1383	----	1187	----	2247
DOMESTIC	----	363	----	331	----	314	----	322	----	450
PROB/GDN	----	242	----	118	----	309	----	285	----	297
SUBTOTAL	----	1749	----	1683	----	2045	----	1843	----	3045
DAILY AVG.	----	29	----	28	----	34	----	30	----	50

KENT MAIL-IN	4TH QTR, 2011		1ST QTR, 2012		2ND QTR, 2012		3RD QTR, 2012		4TH QTR, 2012	
	----	ORDS	----	ORDS	----	ORDS	----	ORDS	----	ORDS
ADOP/PAT	----	1	----	0	----	0	----	0	----	0
DOM. VIOL.	----	1	----	0	----	0	----	0	----	0
OTH. CIVIL	----	32	----	64	----	42	----	21	----	31
DOMESTIC	----	18	----	25	----	22	----	21	----	16
PROB/GDN	----	33	----	25	----	30	----	29	----	20
SUBTOTAL	----	85	----	114	----	94	----	71	----	67
DAILY AVG.	----	1	----	2	----	2	----	1	----	1

ALL SEATTLE KENT and EASTSIDE	4TH QTR, 2011		1ST QTR, 2012		2ND QTR, 2012		3RD QTR, 2012		4TH QTR, 2012	
	HRGS	ORDS	HRGS	ORDS	HRGS	ORDS	HRGS	ORDS	HRGS	ORDS
GRAND TOTAL	3853	22050	3406	21093	3292	24598	3310	22192	3680	21555
DAILY AVERAGE	63.2	361.5	55.8	345.8	54.0	403.2	54.3	363.8	60.3	353.4

Note: Ex Parte via Clerk started in January 2009.

# Appendix Glossary and Definition

## General Definition

### **Active Status**

A case is active if it is not on suspense status (see Suspense Status).

### **Case**

A case is defined as a filing with an assigned case number (or a case number plus a defendant connection code in pre-1990 criminal filings).

### **Completion**

A case is completed when dispositive document is filed with the court following resolution.

### **Jury Trial**

A hearing is reported as a jury trial if the jury is impaneled.

### **New Case**

A new case is an original filing with new case number assigned.

### **Non-Jury Trial**

A hearing is reported as a non-jury trial if an opening statement is made, waived, or reserved. A juvenile fact finding hearings is reported as a non-jury trial.

### **Pending Case**

A case is defined as pending if it is unresolved and active (not in suspense).

### **Reactivated Case**

A case returns to active status from suspense status during the reporting period.

### **Re-opened Cases**

A case is re-opened if it has been previously completed but returns to the court for supplement or change of the original case resolution. A re-opened case does not have a new case number. Only resolved cases can be "re-opened". (Note: measurement not available as of July 1996. SCOMIS capacity may exist after conversion to DB2 in the future).

### **Resolution**

A case is resolved if all issues in the complaint are fully adjudicated.

### **Suspended Case**

A case is placed in suspense status from active status during the reporting period.

### **Suspense Status**

A case is on suspense status if it is on warrant, appeal, stay, mediation, arbitration ("Deferred Prosecution" is not a suspense status, but is treated as a resolution).

### **Trial**

A hearing set before a judge or jury in which all the issues in the case are meant to be resolved. A trial normally includes opening statements to the court or jury stating what the evidence will show, introduction of witnesses and exhibits for direct and cross examination, final arguments to the court or jury in which counsel argue both the evidence and the law, and judgment by the court or jury stating what the facts of the case are and what law applies to the facts. In a jury case, it also includes the selection of the jury. A trial can be held

for one or more cases. A single trial may be held to adjudicate more than one case (as defined above).

### **Post-resolution Modifications**

In this report, we also report the post-resolution modifications for case type 3 (domestic) and 5 (paternity). These numbers are based on the tracks (DMOD and DTBA) opened after the original resolution date (i.e., if the track beginning date is after the resolution date).

## Section I. Filing Activity

### **Additional Filings with Clerk**

Filings with clerk without assigning a SCOMIS case number. This reporting category consists of search warrants, wire taps, extradition, oaths and orders pertaining to Pro Tem judge/commissioners/Court

Reporters/Bailiffs, and other "non-case" filings as recorded under 12050 system.

### **Annual Filings**

Total number of new case filings during the calendar year (January 1 to December 31).

### **Adoption Cases**

This reporting category includes the following "cause-of-action" codes within SCOMIS case type 5:

- Relinquishment (REL)
- Termination of Parent/Child Relationship (TER)
- Adoption (ADP)
- Miscellaneous (MSC)
- Name Change - Confidential (CHN)
- Initial Pre-Placement Report Filed with Clerk (PPR)

### **General Civil Cases**

"General Civil" cases include all civil matters other than Domestic, Probate, Guardianship, Adoption, Paternity and appeals from courts of limited jurisdiction and "Matters Filed with Clerk". "General civil" cases include small claims as identified by the "Small Claim Track". This reporting category includes the following "cause-of-action" codes within SCOMIS case type 2:

- Administrative Law Review (ALR)
- Change of Name - Non-Confidential (CHN)
- Collection (COL)
- Commercial (COM)
- Condemnation (CON)
- Domestic Violence Protection (DVP)
- Emancipation of Minor (EOM)
- Foreclosure (FOR)
- Civil Harassment (HAR)
- Injunction (INJ)
- Other Malpractice (MAL)
- Medical Malpractice (MED)
- Meretricious Relationship (MER)
- Malicious Harassment (MHA)
- Miscellaneous (MSC)
- Minor Settlement (MST) - as of 10/1/96, under Guardianship
- Petition of Civil Commitment- Sexual Predator (PCC)
- Property Fairness (PFA)

- Personal Injury (PIN)
- Property Damage (PRP)
- Quiet Title (QT)
- Small Claims (LCA/LCI on “Small Claim Track”)
- Seizure of Property from the Commission of a Crime (SPC)
- Seizure of Property Resulting from a Crime (SPR)
- Tort Motor Vehicle (TMV)
- Tort Other (TTO)
- Unlawful Detainer (UND)
- Wrongful Death (WDE)
- Writ of Habeas Corpus (WHC)
- Miscellaneous Writ (WMW)
- Writ of Mandamus (WRM)
- Writ of Restitution (WRR)
- Writ of Review (WRV)

**Civil RALJ Cases**

Civil appeals from courts of limited jurisdiction (excluding small claims as identified by the “Small Claim Track”). Civil RALJ includes the following “cause-of-action” reporting categories:

- Lower Court Appeal - Civil and “Not a Small Claim”
- Lower Court Appeal - Infraction and “Not a Small Claim”

Note: The Civil RALJ cases are determined based on both SCOMIS “cause-of-action” code (LCA and LCI) within SCOMIS case type 2 and the “Small Claim Track”.

**Criminal Cases (excl. RALJ)**

Adult criminal cases, excluding appeals from courts of limited jurisdiction. This reporting category includes the following crime categories within SCOMIS case type 1:

- Homicide
- Sex Crime
- Robbery
- Assault
- Theft/Burglary
- Motor Vehicle Theft
- Controlled Substance
- Other Felony
- Others (Misdemeanor, Non-charge Case)

**Criminal RALJ Cases**

Criminal appeals from courts of limited jurisdiction. This reporting category includes all SCOMIS case type 1 cases that have an appeal from lower court field of “Yes”.

**Domestic Cases**

This reporting category includes the following “cause-of-action” codes within SCOMIS case type 3:

- Annulment – Invalidity (INV)
- Child Custody (CUS)
- Dissolution With Children Of The Marriage (DIC)
- Dissolution With No Children Of The Marriage (DIN)
- Dissolution of Domestic Partnership – With Children (DPC)
- Dissolution of Domestic Partnership – With No Children (DPN)
- Foreign Judgment (FJU)
- Invalidity – Domestic Partnership (INP)
- Mandatory Wage Assignment (MWA)
- Miscellaneous (MSC)
- Modification (MOD)
- Modification – Support Only (MDS)
- Out-Of-State Child Custody (OSC)
- Parenting Plan / Child Support (PPS)
- Reciprocal, Respondent In-County (RIC)
- Reciprocal, Respondent Out-of-County (ROC)
- Legal Separation (SEP)
- Legal Separation – Domestic Partnership (SPD)

**Guardianship Cases**

This reporting category includes the following “cause-of-action” codes within SCOMIS case type 4:

- Guardianship/Estate (G/E)
- Guardianship (GND)

- Limited Guardianship (LGD)
- Minor Settlement (MST)

**Juvenile ARY/CHINS Cases**

Juvenile dependency cases, excluding truancy cases and DEP cause code. This reporting category includes following “cause-of-action” codes within SCOMIS case type 7:

- Alternative Residential Placement (ARP)
- At-Risk Youth (ARY)
- Child in Need of Service (CNS)
- Termination (TER)

**Juvenile Dependency Cases**

This reporting category includes following “cause-of-action” codes within SCOMIS case type 7:

- Dependency (DEP)

**Juvenile Offender Cases**

This reporting category includes the following crime categories in SCOMIS case type 8:

- Homicide
- Sex Crime
- Robbery
- Assault
- Theft/Burglary
- Motor Vehicle Theft
- Controlled Substance
- Other Felony
- Others (Misdemeanor, Non-charge Case)

**Juvenile Truancy Cases**

Mandatory truancy filings started on 10/01/1995. This reporting category includes the following “cause-of-action” code within SCOMIS case type 7:

- Truancy (TRU)

**Matters Filed with Clerk**

Filings with clerk (case numbers assigned), but requiring little or no judicial action. This reporting category includes the following “cause-of-action” codes within SCOMIS case type 2:

- Abstract of Judgment (ABJ)
- Foreign Judgment (FJU)
- Tax Warrant (TAX)
- Transcripts of Judgment (TRJ)

**Mental Illness Cases**

This reporting category includes all “cause-of-action” codes within SCOMIS case type 6:

- Alcoholic Treatment (ALT)
- Mental Illness - Adult (MI)
- Mental Illness - Juvenile (MIJ)

**Paternity Cases**

This reporting category includes the following “cause-of-action” codes within SCOMIS case type 5:

- Modification (MOD)
- Paternity (PAT)
- Paternity/URES/UFSA (PUR)

**Probate Cases**

This reporting category includes the following “cause-of-action” codes within SCOMIS case type 4:

- Absentee (ABS)
- Disclaimer (DSC)
- Estate (EST)
- Foreign Will (FNW)
- Miscellaneous (MSC)
- Non-Probate Notice to Creditors (NNC)
- Will Only (WLL)

### **Total Cases**

New cases with case numbers assigned, excluding “Matters Filed with Clerk” and “Additional Filings with Clerk”.

### **Year-to-Date Filings**

Total number of new filings since the beginning of calendar year (January 1) to the end of reporting period.

## **Section II. Resolution Category**

### **Adoption - Resolved by Trial**

Court Decision after Non-Jury Trial (CDAT)

### **Adoption - Uncontested**

Consolidated Case (CONS)  
Uncontested Resolution (UNDS)

### **Adoption - Settlement/Dismissal**

Closed by Court Order after a Hearing (CLCO)  
Dismissal without Trial (DSM)  
Dismissal after Non-Jury Trial Commencement (DAT)  
Settled after Non-Jury Trial Commencement (SAT)  
Settled by Parties/Agreed Judgment (STPR)

### **Adoption - Closure by Clerk**

Dismissal/Closure by Clerk (DSCK)

### **Adoption - Others**

Change of Venue/Jurisdiction (CHV)  
Other Non-specified Resolutions

### **Civil - Resolved by Jury Trial**

Jury Verdict after Trial (JVAT)

### **Civil - Resolved by Non-Jury Trial**

Court Decision after Non-Jury Trial (CDAT)

### **Civil - Summary Judgment**

Summary Judgment (SMJG)

### **Civil - Default/Uncontested**

Consolidated Case (CONS)  
Default Judgment (DFJG)  
Uncontested Resolution (UNDS)

### **Civil - Arbitration**

Settle by Arbitration (ARBA)

### **Civil - Settlement/Dismissal**

Closed by Court Order after a Hearing (CLCO)  
Dismissal after Non-Jury Trial (DAT)  
Dismissal after Jury Trial (DJT)  
Dismissal (DSM)  
Settled after Non-Jury Trial Commencement (SAT)  
Settled after Jury Trial Commencement (SJT)  
Settled by Parties/Agreed Judgment (STPR)

### **Civil - Closure by Clerk**

Dismissal/Closure by Clerk (DSCK)

### **Civil - Others**

Transferred to Federal bankruptcy Court (BANK)  
Change of Venue/Jurisdiction (CHV)  
Other Non-specified Resolutions

### **Civil RALJ - RALJ Decision**

Court Decision to Affirm Appeal/review (CDTA)  
Court Decision to Modify Appeal/Review (CDTM)  
Court Decision to Reverse Appeal/review (CDTR)

### **Civil RALJ - Dismissal**

Dismissal and Remand of Appeal/Review (DSRM)

### **Civil RALJ - Others**

Other Non-specified Resolutions

### **Comparison with Court Standard**

Percentage of cases actually falling within the Court’s standard benchmark.

### **Court Standard**

Benchmarks set by a state advisory committee and adopted by the court indicating percentage of cases to be resolved at certain age (in months, 1 month = 30 days as used in the Advisory Case Processing Time Standard as published in the Court Rule).

Court standard is based on timelines as suggested by State Advisory Committee. For a case type with no time standard, the standard for a similar case type is adopted if appropriate.

*Criminal: 90% by 4 months, 98% by 6 months, 100% by 9 months.*

*Civil: 90% by 12 months, 98% by 18 months, 100% by 24 months.*

*Domestic: 90% by 8 months, 98% by 10 months, 100% by 14 months.*

*Probate/Guardianship: 90% by 8 months, 98% by 18 months, 100% by 36 months.*

*Adoption/Paternity: 90% by 8 months, 98% by 10 months, 100% by 14 months.*

*Mental Illness/Juvenile Truancy: No standard yet.*

*Juvenile Dependency: 90% by 8 months, 98% by 10 months, 100% by 14 months.*

*Juvenile Offender: 90% by 4 months, 98% by 6 months, 100% by 9 months.*

*Criminal RALJ/Civil RALJ: 90% by 4 months, 98% by 5 months, 100% by 6 months.*

### **Criminal - Resolved by Jury Trial**

Acquittal by Jury (AQJV)  
Convicted - Jury Verdict after Trial (CVJV)

### **Criminal - Resolved by Non-Jury Trial**

Acquittal by Court (AQCT)  
Convicted - Court Decision after Non-Jury Trial (CVCT)

### **Criminal - Resolved by Guilty Plea**

Guilty Plea (GP)  
Guilty Plea after Non-Jury Trial Commencement (GPAT)  
Guilty Plea after Jury Trial Commencement (GPJT)

### **Criminal - Dismissal**

Dismissal after Non-Jury Trial Commencement (DAT)  
Dismissal after Jury Trial Commencement (DJT)  
Dismissal (DSM)

### **Criminal - Others**

Change of Venue (CHV)  
Consolidated Case (CONS)  
Continued Order of Prosecution with Completion (CTOP)\*  
Deferred Prosecution (DFPD)  
Dismissal/Closure by Clerk (DSCK)  
Governor’s warrant (GW)  
Not Guilty by Reason of Insanity (NGRI)  
Uncontested Resolution (UNDS)  
Waiver of Extradition (WE)  
Other Non-specified Resolutions

\* Note: For adult criminal cases, “CTOP” does not necessarily constitute resolution. An adult criminal case with a “CTOP” as resolution code is counted as a resolved case only if a completion code exists along with the “CTOP”. If the resolution code is CTOP and there is no completion code, then the case is treated as unresolved. The primary reason for combining “CTOP” with a completion code is to determine

resolution for drug court cases (CTOP is entered in the SCOMIS resolution field as soon as a defendant enrolls in Drug Court). This rule on “CTOP” applies to adult criminal cases only.

***Criminal RALJ - RALJ Decision***

Court Decision to Affirm Appeal/review (CDTA)  
Court Decision to Modify Appeal/Review (CDTM)  
Court Decision to Reverse Appeal/review (CDTR)

***Criminal RALJ - Dismissal***

Dismissal and Remand of Appeal/Review (DSRM)

***Criminal RALJ - Others***

Other Non-specified Resolutions

***Domestic - Resolved by Trial***

Court Decision after Non-Jury Trial (CDAT)

***Domestic - Default/Uncontested***

Consolidated Case (CONS)  
Default Judgment (DFJG)  
Uncontested Resolution (UNDS)

***Domestic - Settlement/Dismissal***

Settled by Arbitration (ARBA)  
Closed by Court Order after a Hearing (CLCO)  
Dismissal after Non-Jury Trial Commencement (DAT)  
Dismissal (DSM)  
Settled after Non-Jury Trial Commencement (SAT)  
Settled by Parties/Agreed Judgment (STPR)

***Domestic - Closure by Clerk***

Dismissal/Closure by Clerk (DSCK)

***Domestic - Others***

Change of Venue/Jurisdiction (CHV)  
Summary Judgment (SMJG)  
Other Non-specified Resolutions

***Guardianship - Guardian Appointed***

Guardian Appointed (PRGA)

***Guardianship - Dismissal***

Closed by Court Order after a Hearing (CLCO)  
Dismissal (DSM)

***Guardianship - Closure by Clerk***

Dismissal/Closure by Clerk (DSCK)

***Guardianship - Others***

Change of Venue/Jurisdiction (CHV)  
Consolidated Case (CONS)  
Uncontested Resolution (UNDS)  
Other Non-specified Resolutions

***Juvenile Dependency - Finding of Dependency***

Approved Petition (APP)

***Juvenile Dependency - Dismissal***

Dismissal (DSM)

***Juvenile Dependency - Others***

Change of Venue/Jurisdiction (CHV)  
Consolidated Case (CONS)  
Transfer of Jurisdiction (TRJU)  
Other Non-specified Resolutions

***Juvenile Offender - Resolved by Trial***

Acquittal by Court (AQCT)  
Convicted - Court Decision after Adjudictory Hearing (CVCT)

***Juvenile Offender - Resolved by Guilty Plea***

Guilty Plea before Adjudictory Hearing Commencement (GP)  
Guilty Plea after Adjudictory Hearing Commencement (GPAT)

***Juvenile Offender - Dismissal***

Dismissal after Adjudictory Hearing Commencement (DAT)  
Dismissal (DSM)

***Juvenile Offender - Others***

Change of venue (CHV)  
Dismissal/Closure by Clerk (DSCK)  
Consolidated Case (CONS)

Continued Prosecution (CTOP)  
Decline of Jurisdiction (DECL)  
Uncontested Resolution (UNDS)  
Other Non-specified Resolutions

***Juvenile Truancy - Finding of Truancy***

Approved Petition (APP)

***Juvenile Truancy - Dismissal***

Dismissal (DSM)

***Juvenile Truancy - Others***

Change of Venue (CHV)  
Consolidated Case (CONS)  
Transfer of Jurisdiction (TRJU)  
Other Non-specified Resolutions

***Mental Illness - Court Decision to Commit***

Court Decision to Commit (CDTC)

***Mental Illness - Closed by Court***

Closed by Court (CLCO)

***Mental Illness - Dismissal***

Dismissal (DSM)

***Mental Illness - Others***

Change of Venue/Jurisdiction (CHV)  
Uncontested Resolution (UNDS)  
Other Non-specified Resolutions

***Paternity - Resolved by Trial***

Court Decision after Non-Jury Trial (CDAT)

***Paternity - Summary Judgment***

Summary Judgment (SMJG)

***Paternity - Default/Uncontested***

Consolidated Case (CONS)  
Default Judgment (DFJG)  
Uncontested Resolution (UNDS)

***Paternity - Settlement/Dismissal***

Settled by Arbitration (ARBA)  
Closed by Court Order after a Hearing (CLCO)  
Dismissal after Non-Jury Trial Commencement (DAT)  
Dismissal (DSM)  
Settled after Non-Jury Trial Commencement (SAT)  
Settled by Partied/Agreed Judgment (STPR)

***Paternity - Closure by Clerk***

Dismissal/Closure by Clerk (DSCK)

***Paternity - Others***

Change of Venue (CHV)  
Other Non-specified Resolutions

***Percentile***

Percent of cases resolved at a given age. For example, if resolved cases had a 98 percentile of 12 months, it means that 98% of the cases were resolved within the age of 12 months, or conversely 2% of the cases were resolved after 12 months, not counting suspense time.



### ***Probate - Personal Representative Appointed***

Non-Intervention Probate (NIP)  
Personal Representative Appointed (PRGA)

### ***Probate - Dismissal***

Closed by Court Order after a Hearing (CLCO)  
Dismissal (DSM)

### ***Probate - Closure by Clerk***

Dismissal/Closure by Clerk (DSCK)

### ***Probate - Others***

Change of Venue (CHV)  
Consolidated Case (CONS)  
Uncontested Resolution (UNDS)  
Other Non-specified Resolutions

### ***Backlogged Cases***

Active pending cases with an age exceeding the court-adopted time standard for each specific case type (recommended by the State Advisory Committee, see definition for *Court Standard*).

## **Section III. Pending Caseload**

### ***Adjustment***

Adjustment made because of vacating of resolutions, or change in suspense status between two reporting period.

### ***End Pending***

Total number of pending cases at the end of reporting period.

### ***Previous Pending***

Total number of pending cases at the beginning of reporting period.

### ***Resolution Rate***

Resolution rate is defined as the ratio of number of resolutions to number of new filings (i.e., number of resolutions divided by number of new filings) during the reporting period. The resolution rate measures the relative pace of resolution in relation to the pace of new filings. A resolution rate of greater than 1 indicates the number of resolutions exceeds the number of new filings.

### ***On-review Status***

Cases that have been resolved (post-resolution) but still need court resources for periodic review and other remaining outstanding issues.

*Probate (EST), Paternity (PAT) and Dependency (DEP): Resolved and not completed (paternity or dependency established, but outstanding issues remain).*

*Guardianship (GDN,LGD,G/E): Resolved and on tracks of G1,G2,G3,GE or GD; Minor Settlement (MST): Resolved with a future hearing date.*

## **Section IV. Age of Pending Cases**

### ***Case Age***

The age of a case is the time (number of days) since the filing date, less any suspense time if applicable.

### ***Median Age***

The median age is the time that 50% of the cases are under and 50% are above the given age. For example, if pending cases have a median age of 12 months, it means that 50% of the pending cases are within the age of 12 months, and 50% of pending cases are over 12 months. The median age is more robust to cases with extreme age values than the average age.

### ***Suspense Time***

Time (days) that a case is on suspense status before its resolution. If a case has more than one suspense between filing and resolution, the suspense time is the total from all suspenses. Time on suspense status after resolution (e.g., appeals) is not counted.