

King County Superior Court
Quarterly Statistical Report

First Quarter 2013

Department of Judicial Administration
Prepared by: Shiquan Liao, Ph.D., Statistician

Release Date: April 20, 2013

Report #: QTR-2013-1

Table 1. Year-to-Date Filing Activity

King County Superior Court

Reporting Category	Year-to-Date and Annual Filing Activity ⁽¹⁾					2012-2013 change (+ means "increase")		% of 2013 Total Filing ⁽²⁾
	2009	2010	2011	2012	2013	Cases	Percentage	
Total (incl. RALJ)								
Year-to-Date Filing	15584	15137	15403	14229	13636	-593	-4.2%	
Annual Filing	62148	59798	58337	54834				
Criminal (excl. RALJ)								
Year-to-Date Filing	1675	1638	1655	1538	1490	-48	-3.1%	10.8%
Annual Filing	6498	6691	5986	5942				
General Civil (excl. Asbestos)								
Year-to-Date Filing	7499	6825	6984	6400	5834	-566	-8.8%	44.7%
Annual Filing	29789	27603	27499	24477				
Asbestos Cases (civil) ⁽³⁾								
Year-to-Date Filing	5	5	9	7	19	+12	+174%	0.1%
Annual Filing	32	29	43	36				
Domestic								
Year-to-Date Filing	1880	2034	1993	1961	2011	+50	+2.5%	14.7%
Annual Filing	7673	7850	7865	7678				
Probate								
Year-to-Date Filing	1270	1275	1490	1405	1606	+201	+14.3%	11.8%
Annual Filing	5110	5203	5417	5492				
Guardianship								
Year-to-Date Filing	228	221	204	204	210	+6	+2.9%	1.5%
Annual Filing	841	893	837	879				
Adoption								
Year-to-Date Filing	177	173	163	119	115	-4	-3.4%	0.8%
Annual Filing	685	686	688	511				
Paternity								
Year-to-Date Filing	237	332	264	334	246	-88	-26.3%	1.8%
Annual Filing	1233	1189	1039	1161				
Mental Illness								
Year-to-Date Filing	644	730	827	888	820	-68	-7.7%	6.0%
Annual Filing	2727	3059	3506	3591				
Juvenile Dependency								
Year-to-Date Filing	250	280	288	255	246	-9	-3.5%	1.8%
Annual Filing	903	1038	1060	1050				
Juvenile ARY/CHINS								
Year-to-Date Filing	89	108	89	70	55	-15	-21.4%	0.4%
Annual Filing	341	347	303	242				
Juvenile Truancy								
Year-to-Date Filing	714	595	606	451	533	+82	+18.2%	3.9%
Annual Filing	2083	1614	1350	1271				
Juvenile Offender								
Year-to-Date Filing	865	862	762	538	405	-133	-24.7%	3.0%
Annual Filing	3967	3356	2496	2249				
Criminal RALJ								
Year-to-Date Filing	35	41	54	47	40	-7	-14.9%	0.3%
Annual Filing	180	176	191	192				
Civil RALJ								
Year-to-Date Filing	16	18	15	12	6	-6	-50.0%	0.0%
Annual Filing	86	64	57	63				
Matters Filed with Clerk ⁽⁴⁾								
Year-to-Date Filing	3569	3782	3741	3825	3698	-127	-3.3%	
Annual Filing	14662	15586	14799	15046				

(1) New filings only (based on filing date), excluding re-opened cases (unable to count), and reflecting all documents received by 04/15/2013.

(2) New filings of each reporting category as percentage of "Year-to-Date Filing".

(3) "Matters Filed with Clerk" and "Additional Filings with Clerk" are not included in the "Total".

Chart 1-A. Quarterly Filing Activity
Total Judicial Cases Only ("Matters Filed with Clerk" excluded)

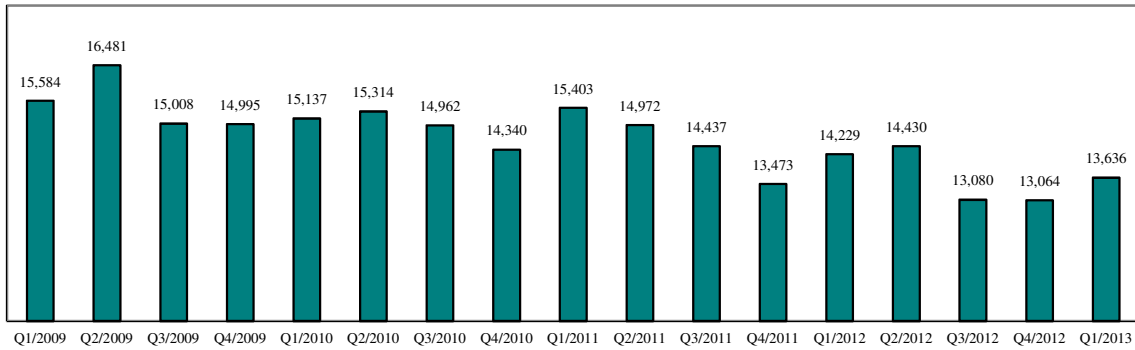
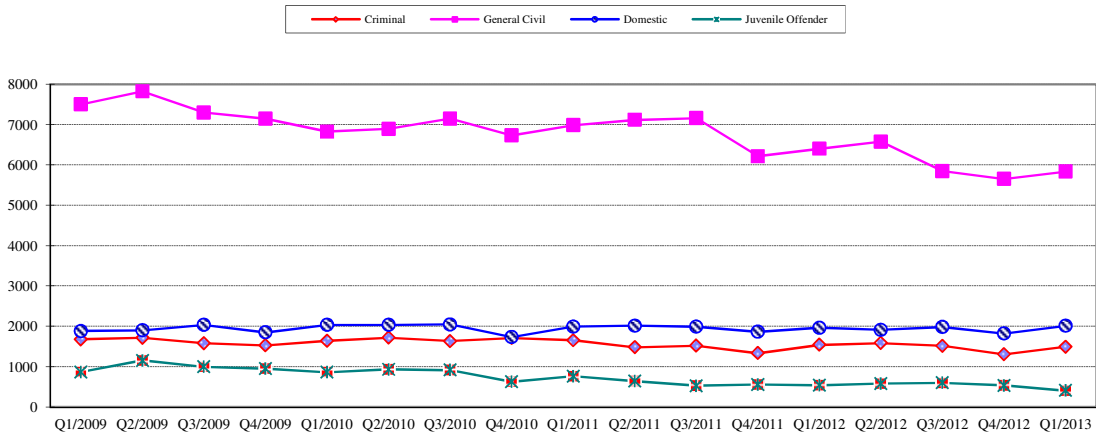


Chart 1-B. Quarterly Filings: Criminal, Domestic, General Civil and Juvenile Offender Cases Only



* Note: "General Civil" is specifically defined in this report. The category of "General Civil" does **not** include the following case types: domestic, probate, guardianship, adoption, paternity, mental illness, juvenile cases (dependency, at-risk youth, child-in-need of service, civil RALJ, and tax filings that don't require judicial resources ("matters filed with clerk")). Please check the Appendix for the cause codes in the "General Civil" category.

Table 1-A. Post-Resolution Modifications (Domestic and Paternity Cases)

Based on Tracks Opened After Original Resolution Date

		2011Q1			2011Q2			2011Q3			2011Q4			Year 2011		
Location	Case Type	DMOD	DTBA	Total	DMOD	DTBA	Total	DMOD	DTBA	Total	DMOD	DTBA	Total	DMOD	DTBA	Total
KNT	Domestic	151	65	216	165	76	241	135	54	189	150	67	217	601	262	863
	Paternity	22	6	28	23	10	33	20	3	23	18	3	21	83	22	105
KNT Total		173	71	244	188	86	274	155	57	212	168	70	238	684	284	968
SEA	Domestic	118	75	193	151	106	257	143	75	218	155	76	231	567	332	899
	Paternity	19	19	38	17	23	40	19	30	49	7	17	24	62	89	151
SEA Total		137	94	231	168	129	297	162	105	267	162	93	255	629	421	1050
KNT/SEA Total		310	165	475	356	215	571	317	162	479	330	163	493	1313	705	2018
		2012Q1			2012Q2			2012Q3			2012Q4			Year 2012		
Location	Case Type	DMOD	DTBA	Total	DMOD	DTBA	Total	DMOD	DTBA	Total	DMOD	DTBA	Total	DMOD	DTBA	Total
KNT	Domestic	183	55	238	153	56	209	150	61	211	159	38	197	645	210	855
	Paternity	15	4	19	14	8	22	16	4	20	13	6	19	58	22	80
KNT Total		198	59	257	167	64	231	166	65	231	172	44	216	703	232	935
SEA	Domestic	153	68	221	156	84	240	192	71	263	149	68	217	650	291	941
	Paternity	6	18	24	13	22	35	16	10	26	4	7	11	39	57	96
SEA Total		159	86	245	169	106	275	208	81	289	153	75	228	689	348	1037
KNT/SEA Total		357	145	502	336	170	506	374	146	520	325	119	444	1392	580	1972
		2013Q1			2013Q2			2013Q3			2013Q4			Year 2013		
Location	Case Type	DMOD	DTBA	Total	DMOD	DTBA	Total	DMOD	DTBA	Total	DMOD	DTBA	Total	DMOD	DTBA	Total
KNT	Domestic	160	47	207												
	Paternity	17	7	24												
KNT Total		177	54	231												
SEA	Domestic	132	67	199												
	Paternity	6	9	15												
SEA Total		138	76	214												
KNT/SEA Total		315	130	445												

* DMOD = parenting plan modification track; DTBA = support modification track.

Table 2. Number of Cases Resolved and Resolution Category (%)

King County Superior Court

Reporting Category	Q2/11	Q3/11	Q4/11	Q1/12	Q2/12	Q3/12	Q4/12	Q1/13*
Total Resolutions (excl. "Matters Filed with Clerk")	16070	15396	14291	13683	15255	13962	13730	14048
Criminal (excl. RALJ): # Resolved	1599	1522	1466	1309	1477	1365	1423	1539
Resolved by Jury Trial	3.8%	4.6%	4.1%	5.0%	3.5%	3.0%	3.1%	3.8%
Resolved by Non-Jury Trial	1.3%	1.1%	0.6%	1.0%	0.6%	0.7%	1.1%	1.5%
Resolved by Guilty Plea	78.4%	78.1%	78.4%	78.2%	80.0%	79.9%	82.3%	78.8%
Dismissal	16.1%	15.6%	16.6%	15.4%	15.8%	16.0%	13.2%	15.4%
Others	0.4%	0.6%	0.3%	0.3%	0.1%	0.4%	0.4%	0.5%
General Civil: # Resolved	7866	7293	6905	6502	7295	6473	6274	6503
Resolved by Jury Trial	0.4%	0.4%	0.5%	0.5%	0.6%	0.5%	0.4%	0.5%
Resolved by Non-Jury Trial	0.4%	0.3%	0.3%	0.4%	0.3%	0.4%	0.4%	0.5%
Summary Judgment	1.8%	1.7%	1.9%	2.3%	2.3%	1.9%	1.8%	1.7%
Default/ Uncontested	42.2%	43.6%	40.5%	42.5%	44.5%	40.5%	41.5%	41.3%
Arbitration	2.0%	2.3%	2.5%	2.3%	2.1%	2.1%	2.6%	2.6%
Settlement/Dismissal	49.5%	48.4%	50.1%	48.7%	46.6%	50.9%	50.0%	49.8%
Closure by Clerk	2.8%	2.6%	3.6%	2.3%	2.9%	3.0%	2.2%	2.9%
Others	0.8%	0.7%	0.7%	1.0%	0.9%	0.8%	1.1%	0.9%
Asbestos Cases (civil): # Resolved	21	8	18	12	11	36	31	15
Resolved by Jury Trial	0.0%	0.0%	5.6%	0.0%	0.0%	0.0%	0.0%	6.7%
Resolved by Non-Jury Trial	0.0%	0.0%	0.0%	0.0%	0.0%	0.0%	0.0%	0.0%
Summary Judgment	0.0%	0.0%	5.6%	0.0%	0.0%	0.0%	0.0%	0.0%
Default/ Uncontested	4.8%	25.0%	0.0%	25.0%	0.0%	2.8%	0.0%	6.7%
Arbitration	0.0%	0.0%	0.0%	0.0%	0.0%	0.0%	0.0%	0.0%
Settlement/Dismissal	95.2%	75.0%	88.9%	75.0%	100%	16.7%	100%	53.3%
Closure by Clerk	0.0%	0.0%	0.0%	0.0%	0.0%	80.6%	0.0%	33.3%
Others	0.0%	0.0%	0.0%	0.0%	0.0%	0.0%	0.0%	0.0%
Domestic: # Resolved	2002	2004	2024	1838	1947	1929	2081	1928
Resolved by Trial	4.9%	3.5%	3.7%	4.2%	4.3%	4.2%	4.9%	4.5%
Default/ Uncontested	9.5%	9.8%	9.0%	8.6%	7.7%	9.5%	10.0%	9.1%
Settlement /Dismissal	84.4%	85.1%	85.7%	85.6%	86.4%	84.8%	84.5%	84.9%
Closure by Clerk	0.8%	1.3%	1.5%	1.0%	1.3%	1.1%	0.5%	1.2%
Others	0.5%	0.3%	0.1%	0.7%	0.3%	0.4%	0.0%	0.4%
Probate: # Resolved	1497	1265	1200	1355	1438	1266	1336	1547
Personal Rep. Appointed	71.1%	72.2%	72.5%	72.3%	72.3%	70.5%	72.8%	72.9%
Dismissal	3.3%	2.3%	2.56%	2.2%	2.5%	2.0%	2.0%	1.8%
Closure by Clerk	0.0%	0.1%	0.1%	0.0%	0.1%	0.0%	0.0%	0.0%
Others	25.5%	25.5%	24.8%	25.5%	25.0%	27.6%	25.3%	25.4%
Guardianship: # Resolved	203	222	190	180	246	222	219	176
Guardian Appointed	55.2%	47.8%	52.6%	52.2%	51.6%	62.2%	58.0%	50.0%
Dismissal	44.3%	52.3%	46.8%	46.7%	48.0%	36.9%	42.0%	50.0%
Closure by Clerk	0.0%	0.0%	0.0%	0.0%	0.0%	0.0%	0.0%	0.0%
Others	0.5%	0.0%	0.5%	1.1%	0.4%	0.9%	0.0%	0.0%
Adoption: # Resolved	173	151	237	83	118	113	190	95
Resolved by Trial	0.0%	0.7%	0.0%	0.0%	0.9%	0.0%	0.0%	0.0%
Uncontested	2.3%	2.0%	3.0%	9.6%	0.9%	3.5%	0.0%	9.5%
Settlement /Dismissal	94.8%	96.7%	96.6%	90.4%	96.6%	96.5%	100%	90.5%
Closure by Clerk	1.2%	0.7%	0.4%	0.0%	1.7%	0.0%	0.0%	0.0%
Others	1.2%	0.0%	0.0%	0.0%	0.0%	0.0%	0.0%	0.0%
Paternity: # Resolved	250	270	256	257	285	275	230	265
Resolved by Trial	0.4%	1.1%	0.4%	0.4%	0.0%	0.7%	0.4%	0.4%
Summary Judgment	40.0%	42.6%	43.0%	36.6%	34.7%	40.4%	49.1%	48.3%
Default/ Uncontested	21.2%	21.9%	23.1%	28.0%	29.8%	25.1%	25.2%	22.6%
Settlement/Dismissal	38.0%	34.1%	33.2%	34.6%	34.7%	33.8%	25.2%	28.7%
Closure by Clerk	0.0%	0.4%	0.4%	0.4%	0.7%	0.0%	0.0%	0.0%
Others	0.4%	0.0%	0.0%	0.0%	0.0%	0.0%	0.0%	0.0%

Reflecting all documents received by 04/15/2013.

Table 2 (cont.). Number of Cases Resolved and Resolution Category (%)

King County Superior Court

Reporting Category	Q2/11	Q3/11	Q4/11	Q1/12	Q2/12	Q3/12	Q4/12	Q1/13*
Mental Illness: # Resolved	865	841	895	865	1078	996	844	754
Court Decision to Commit	67.5%	70.1%	64.0%	74.2%	57.7%	62.0%	68.3%	70.9%
Closed by Court	0.0%	0.0%	0.0%	0.0%	0.0%	0.0%	0.0%	0.0%
Dismissal	22.1%	23.2%	21.7%	15.4%	12.8%	18.8%	24.5%	22.2%
Others	10.4%	6.4%	14.3%	10.4%	29.5%	19.3%	7.2%	7.0%
Juvenile Dependency: # Resolved	227	277	272	228	259	273	282	294
Finding of Dependency	58.6%	74.0%	68.8%	70.2%	69.9%	62.3%	68.4%	69.7%
Dismissal	40.5%	26.0%	30.9%	28.5%	29.7%	37.7%	30.5%	29.9%
Others	0.9%	0.0%	0.4%	1.3%	0.4%	0.0%	1.1%	0.3%
Juvenile ARY/CHINS: # Resolved	82	76	58	67	77	56	42	62
Approve of Petition	40.2%	46.1%	53.5%	56.7%	32.5%	51.8%	50.0%	45.2%
Dismissal	59.8%	54.0%	43.1%	43.3%	66.2%	48.2%	50.0%	54.8%
Others	0.0%	0.0%	3.5%	0.0%	1.3%	0.0%	0.0%	0.0%
Juvenile Truancy: # Resolved	514	743	219	282	347	328	192	302
Approve of Petition	16.7%	0.0%	5.5%	21.3%	15.9%	0.0%	18.8%	36.4%
Dismissal	82.5%	38.2%	94.5%	78.4%	83.9%	100%	81.3%	63.6%
Others	0.8%	61.8%	0.0%	0.4%	0.3%	0.0%	0.0%	0.0%
Juvenile Offender: # Resolved	747	664	492	651	619	561	522	511
Resolved by Trial (Fact Finding)	7.1%	3.3%	5.7%	7.8%	5.3%	3.9%	6.3%	12.0%
Resolved by Guilty Plea	39.2%	35.2%	38.0%	40.6%	42.8%	42.1%	40.8%	40.9%
Dismissal	45.5%	42.3%	39.0%	36.9%	31.7%	35.8%	37.9%	27.2%
Deferred Disposition (DDSP)	4.7%	15.5%	11.8%	11.7%	17.1%	15.3%	12.8%	16.6%
Others (including Deferred Prosecution)	3.5%	3.6%	5.5%	3.1%	3.1%	3.9%	2.1%	3.3%
Criminal RALJ: # Resolved	46	47	46	46	46	46	51	38
RALJ Decision	73.9%	70.2%	80.4%	73.9%	76.1%	56.5%	51.0%	60.5%
Dismissal	19.6%	27.7%	15.2%	26.1%	21.7%	34.8%	29.4%	34.2%
Others	6.5%	2.1%	4.4%	0.0%	2.2%	8.7%	19.6%	5.3%
Civil RALJ: # Resolved	13	13	13	8	12	23	17	19
RALJ Decision	53.9%	69.2%	23.1%	62.5%	41.7%	52.2%	30.8%	15.8%
Dismissal	46.1%	30.8%	38.5%	25.0%	50.0%	34.8%	69.2%	84.2%
Others	0.0%	0.0%	38.5%	12.5%	8.3%	13.0%	0.0%	0.0%

* Reflecting all documents received by 04/15/2013.

Chart 2-A. Quarterly Resolutions
Total Judicial Cases Only ("Matters Filed with Clerk" excluded)

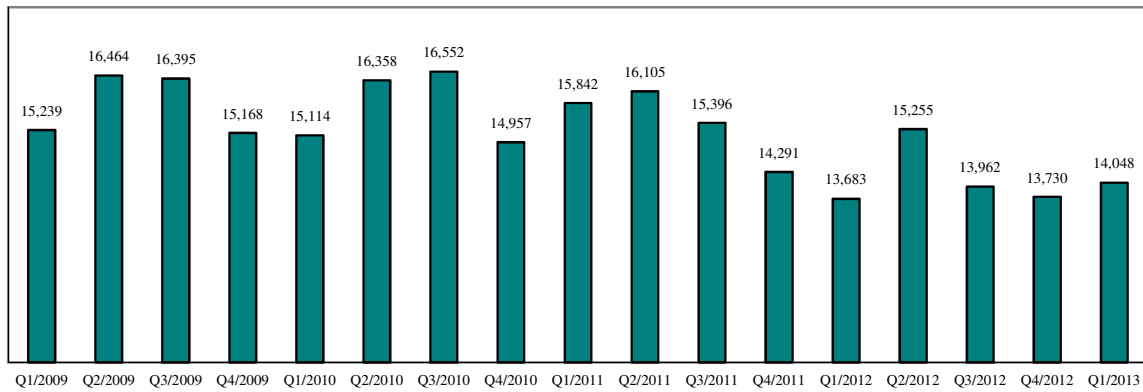
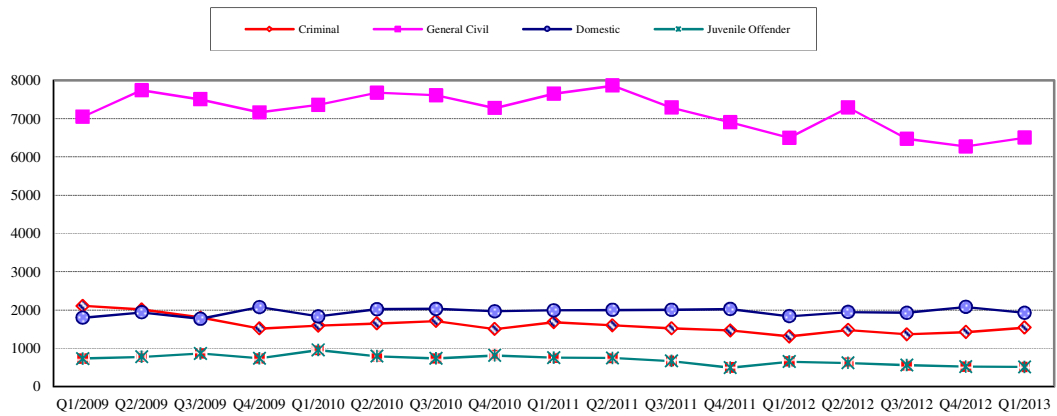


Chart 2-B. Quarterly Resolutions: Criminal, Dmestic, General Civil and Juvenile Offender Cases Only



* Note: "General Civil" is specifically defined in this report. The category of "General Civil" does **not** include the following case types: domestic, probate, guardianship, adoption, paternity, mental illness, juvenile cases (dependency, at-risk youth, child-in-need of service), civil RALJ, and tax filings that don't require judicial resources ("matters filed with clerk"). Please check the Appendix for the cause codes in the "General Civil" category.

Table 3. Age of Resolved Cases
King County Superior Court

Reporting Category	Age of Cases at Resolution							
	Q2/11	Q3/11	Q4/11	Q1/12	Q2/12	Q3/12	Q4/12	Q1/13*
Criminal (excl. RALJ)								
Age (days)								
50% Cases Resolved by Day	93	105	105	109	98	106	112	120
90% Cases Resolved by Day	302	361	347	380	370	373	309	346
98% Cases Resolved by Day	777	1097	722	752	734	697	736	737
Comparison with Court Standard of								
90% in 4 months	63%	56%	56%	55%	58%	56%	54%	50%
98% in 6 months	77%	72%	72%	69%	73%	72%	73%	69%
100% in 9 months	88%	84%	85%	83%	84%	85%	87%	84%
General Civil ⁽¹⁾								
Age (days)								
50% Cases Resolved by Day	22	26	34	28	26	27	29	28
90% Cases Resolved by Day	494	491	502	481	498	514	504	512
98% Cases Resolved by Day	702	672	705	674	712	728	735	706
Comparison with Court Standard of								
90% in 12 months	85%	86%	83%	85%	85%	84%	83%	80%
98% in 18 months	94%	95%	93%	91%	93%	92%	92%	92%
100% in 24 months	98%	99%	98%	99%	98%	97%	98%	98%
Domestic								
Age (days)								
50% Cases Resolved by Day	166	162	158	172	175	169	170	181
90% Cases Resolved by Day	385	390	384	395	378	385	391	387
98% Cases Resolved by Day	599	2641	628	657	581	589	643	596
Comparison with Court Standard of								
90% in 8 months	64%	67%	69%	65%	64%	64%	64%	63%
98% in 10 months	73%	74%	76%	73%	73%	72%	73%	71%
100% in 14 months	91%	92%	92%	92%	92%	93%	97%	92%
Probate								
Age (days)								
50% Cases Resolved by Day	0	0	0	0	0	0	0	0
90% Cases Resolved by Day	15	12	6	4	6	9	4	4
98% Cases Resolved by Day	401	281	165	87	125	151	151	78
Comparison with Court Standard of								
90% in 8 months	97%	97%	98%	99%	98%	99%	98%	98%
98% in 18 months	99%	99%	99%	99%	99%	100%	99%	100%
100% in 36 months	99%	100%	100%	100%	100%	100%	99%	100%
Guardianship								
Age (days)								
50% Cases Resolved by Day	63	62	60	75	57	65	57	61
90% Cases Resolved by Day	469	191	203	213	207	158	166	259
98% Cases Resolved by Day	800	535	644	521	601	555	614	602
Comparison with Court Standard of								
90% in 8 months	82%	92%	92%	92%	92%	90%	93%	90%
98% in 18 months	94%	98%	97%	98%	97%	97%	98%	94%
100% in 36 months	99%	100%	100%	100%	99%	99%	100%	99%
Adoption								
Age (days)								
50% Cases Resolved by Day	46	70	31	75	89	81	52	93
90% Cases Resolved by Day	259	260	259	178	270	253	206	700
98% Cases Resolved by Day	735	829	332	362	896	511	910	1026
Comparison with Court Standard of								
90% in 8 months	89%	90%	88%	95%	64%	88%	92%	69%
98% in 10 months	91%	92%	89%	95%	71%	93%	93%	75%
100% in 14 months	95%	93%	93%	100%	98%	97%	94%	81%
Paternity								
Age (days)								
50% Cases Resolved by Day	121	128	117	134	111	152	155	173
90% Cases Resolved by Day	253	290	244	245	285	271	272	273
98% Cases Resolved by Day	346	441	441	470	418	407	435	353
Comparison with Court Standard of								
90% in 8 months	89%	85%	89%	89%	87%	82%	84%	80%
98% in 10 months	97%	92%	94%	93%	93%	93%	93%	93%
100% in 14 months	100%	97%	97%	96%	98%	99%	98%	100%

Table 3 (cont.) Age of Resolved Cases

King County Superior Court

Reporting Category	Age of Cases at Resolution							
	Q2/11	Q3/11	Q4/11	Q1/12	Q2/12	Q3/12	Q4/12	Q1/13*
Mental Illness**								
Age (days)								
50% Cases Resolved by Day	3	2	3	3	4	3	3	2
90% Cases Resolved by Day	11	8	14	10	1553	182	10	9
98% Cases Resolved by Day	29	16	449	81	2397	417	820	21
Juvenile Dependency								
Age (days)								
50% Cases Resolved by Day	99	91	129	107	98	94	104	93
90% Cases Resolved by Day	470	329	573	328	391	432	839	487
98% Cases Resolved by Day	3421	648	1553	889	763	993	1014	1483
Comparison with Court Standard of								
90% in 8 months	82%	88%	75%	85%	84%	80%	81%	77%
98% in 10 months	84%	89%	77%	88%	88%	83%	84%	83%
100% in 14 months	88%	93%	86%	92%	90%	90%	86%	88%
Juvenile ARY/CHINS								
Age (days)								
50% Cases Resolved by Day	26	35	36	27	28	44	73	55
90% Cases Resolved by Day	226	310	231	111	232	245	282	238
98% Cases Resolved by Day	330	644	646	199	329	293	1637	343
Comparison with Court Standard of								
90% in 8 months	91%	93%	94%	98%	82%	88%	85%	90%
98% in 10 months	94%	94%	96%	99%	94%	99%	89%	93%
100% in 14 months	100%	96%	96%	100%	99%	100%	95%	98%
Juvenile Truancy**								
Age (days)								
50% Cases Resolved by Day	22	48	19	22	22	68	27	32
90% Cases Resolved by Day	70	2401	204	77	65	158	198	85
98% Cases Resolved by Day	148	2775	282	228	128	442	324	295
Juvenile Offender								
Age (days)								
50% Cases Resolved by Day	69	78	69	75	64	69	73	83
90% Cases Resolved by Day	220	219	199	228	173	175	258	221
98% Cases Resolved by Day	593	869	813	565	648	768	935	787
Comparison with Court Standard of								
90% in 4 months	79%	73%	74%	74%	82%	78%	75%	69%
98% in 6 months	86%	86%	88%	86%	90%	85%	86%	85%
100% in 9 months	93%	92%	89%	92%	94%	95%	93%	94%
Criminal RALJ								
Age (days)								
50% Cases Resolved by Day	245	257	253	244	267	258	254	258
90% Cases Resolved by Day	423	360	415	347	428	603	382	413
98% Cases Resolved by Day	834	427	784	373	689	953	517	477
Civil RALJ								
Age (days)								
50% Cases Resolved by Day	163	163	179	170	179	234	202	171
90% Cases Resolved by Day	283	210	205	225	364	1018	1030	704
98% Cases Resolved by Day	612	247	210	225	405	3542	1859	984

* Reflecting all documents received by 04/15/2013.

** No standard yet.

Table 4. Active Pending Caseload Statistics
King County Superior Court

Reporting Category	Q2/11	Q3/11	Q4/11	Q1/12	Q2/12	Q3/12	Q4/12	Q1/13*
Total (incl. RALJ)								
Previous Pending (+)	20676	20219	20411	19797	20235	20098	19729	19396
New Filing (+)	14972	14437	13473	14229	14430	13080	13064	13636
Resolved (-)	16070	15396	14291	13683	15255	13962	13730	14048
End Pending	20219	20411	19797	20235	20098	19729	19396	19221
Resolution Rate**	1.073	1.066	1.061	0.962	1.057	1.067	1.051	1.030
Criminal (excl. RALJ)								
Previous Pending (+)	2730	2671	2661	2549	2715	2798	2860	2780
New Filing (+)	1480	1518	1332	1538	1585	1513	1305	1490
Resolved (-)	1599	1522	1466	1309	1477	1365	1423	1539
End Pending	2671	2661	2549	2715	2798	2860	2780	2673
Resolution Rate**	1.080	1.003	1.101	0.851	0.932	0.902	1.090	1.033
General Civil								
Previous Pending (+)	9594	9279	9597	9153	9243	8912	8611	8431
New Filing (+)	7115	7160	6214	6400	6576	5844	5650	5834
Resolved (-)	7866	7293	6905	6502	7295	6473	6274	6503
End Pending	9279	9597	9153	9243	8912	8611	8431	8112
Resolution Rate**	1.400	1.143	1.111	1.016	1.109	1.108	1.110	1.115
Asbestos Cases (civil) ⁽¹⁾								
Previous Pending (+)	91	86	90	85	81	81	71	76
New Filing (+)	15	7	8	7	9	8	7	19
Resolved (-)	21	8	18	12	11	36	31	15
End Pending	86	90	85	81	81	71	76	81
Resolution Rate**	1.106	1.019	2.250	1.714	1.212	4.500	4.429	0.789
Domestic								
Previous Pending (+)	4479	4532	4538	4421	4556	4544	4637	4458
New Filing (+)	2015	1988	1865	1961	1913	1982	1818	2011
Resolved (-)	2002	2004	2024	1838	1947	1929	2081	1928
End Pending	4532	4538	4421	4556	4544	4637	4458	4562
Resolution Rate**	0.994	1.008	1.085	0.937	1.018	0.973	1.145	0.959
Probate								
Previous Pending (+)	555	515	531	559	579	631	655	615
New Filing (+)	1462	1261	1204	1405	1453	1262	1365	1606
Resolved (-)	1497	1265	1200	1355	1438	1266	1336	1547
End Pending	515	531	559	579	631	655	615	696
Resolution Rate**	1.024	1.003	0.997	0.964	0.990	1.003	0.979	0.963
Guardianship								
Previous Pending (+)	242	250	250	261	276	277	274	248
New Filing (+)	209	220	203	204	247	216	215	210
Resolved (-)	203	222	190	180	246	222	219	176
End Pending	250	250	261	276	277	274	248	279
Resolution Rate**	0.971	1.009	0.936	0.882	0.996	1.028	1.019	0.838
Adoption								
Previous Pending (+)	224	226	211	192	226	230	240	199
New Filing (+)	173	134	218	119	122	120	149	115
Resolved (-)	173	151	237	83	118	113	190	95
End Pending	226	211	192	226	230	240	199	222
Resolution Rate**	1.000	1.127	1.087	0.697	0.967	0.942	1.275	0.826
Paternity								
Previous Pending (+)	369	372	401	377	456	468	448	500
New Filing (+)	247	298	230	334	299	255	273	246
Resolved (-)	250	270	256	257	285	275	230	265
End Pending	372	401	377	456	468	448	500	479
Resolution Rate**	1.012	0.906	1.113	0.769	0.953	1.078	0.842	1.077

* Reflecting all documents received by 04/15/2013.

** A value of "Resolution Rate" less than one indicates the resolution pace is slower than the filing pace.

Table 4 (cont.) Active Pending Caseload Statistics
King County Superior Court

Reporting Category		Q2/11	Q3/11	Q4/11	Q1/12	Q2/12	Q3/12	Q4/12	Q1/13*
Mental Illness									
Previous Pending	(+)	454	463	548	530	540	350	281	311
New Filing	(+)	873	926	878	888	883	926	894	820
Resolved	(-)	865	841	895	865	1078	996	844	754
End Pending		463	548	530	540	350	281	311	378
Resolution Rate**		0.991	0.908	1.019	0.974	1.221	1.076	0.944	0.920
Juvenile Dependency									
Previous Pending	(+)	442	503	518	522	503	534	523	516
New Filing	(+)	271	261	240	255	271	235	289	246
Resolved	(-)	227	277	272	228	259	273	282	294
End Pending		503	518	522	503	534	523	516	492
Resolution Rate**		0.838	1.061	1.133	0.894	0.956	1.162	0.976	1.195
Juvenile ARY/CHINS									
Previous Pending	(+)	71	90	92	94	91	98	89	104
New Filing	(+)	90	62	62	70	77	43	52	55
Resolved	(-)	82	76	58	67	77	56	42	62
End Pending		90	92	94	91	98	89	104	101
Resolution Rate**		0.911	1.226	0.935	0.957	1.000	1.302	0.808	1.127
Juvenile Truancy									
Previous Pending	(+)	398	329	129	165	145	364	208	308
New Filing	(+)	311	16	414	451	355	19	446	533
Resolved	(-)	514	763	219	282	347	328	192	302
End Pending		329	129	165	145	364	208	308	382
Resolution Rate**		1.653	46.438	0.529	0.625	0.977	17.263	0.430	0.567
Juvenile Offender									
Previous Pending	(+)	863	726	670	723	653	631	655	663
New Filing	(+)	642	527	554	538	576	595	532	405
Resolved	(-)	743	664	492	651	619	561	522	511
End Pending		726	670	723	653	631	655	663	588
Resolution Rate**		1.164	1.260	0.888	1.210	1.075	0.943	0.981	1.262
Criminal RALJ									
Previous Pending	(+)	131	144	145	132	132	136	134	142
New Filing	(+)	55	49	33	47	47	43	55	40
Resolved	(-)	46	47	46	46	46	46	51	38
End Pending		144	145	132	132	136	134	142	144
Resolution Rate**		0.836	0.959	1.394	0.979	0.979	1.070	0.927	0.950
Civil RALJ									
Previous Pending	(+)	31	33	30	34	39	44	43	45
New Filing	(+)	14	10	18	12	17	19	14	6
Resolved	(-)	13	13	13	8	12	23	13	19
End Pending		33	30	34	39	44	43	45	32
Resolution Rate**		0.929	1.300	0.702	0.667	0.706	1.211	0.929	3.167

* Reflecting all documents received by 04/15/2013.

** A value of "Resolution Rate" less than one indicates the resolution pace is slower than the filing pace.

Chart 4-A. Active Pending Caseload at Quarter End
Total Judicial Cases Only ("Matters Filed with Clerk" excluded)

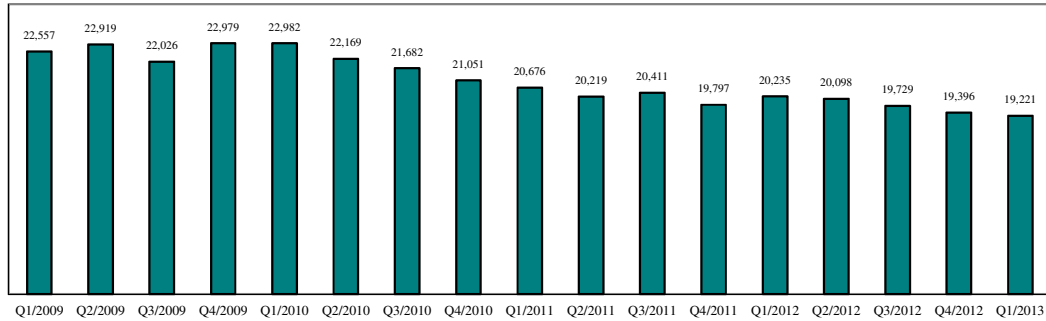


Chart 4-B. Active Pending Caseload at Quarter End: Domestic and General Civil Cases Only

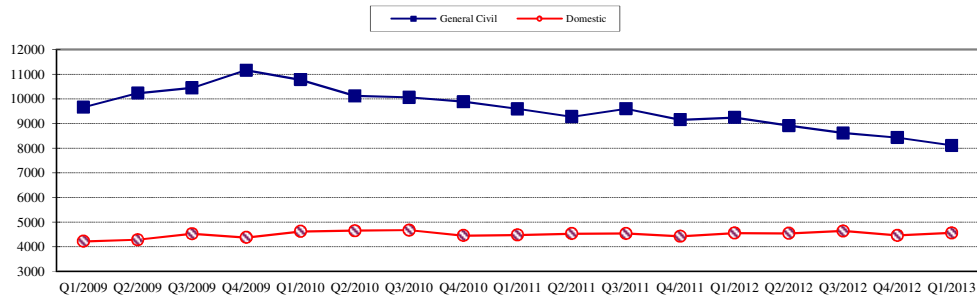
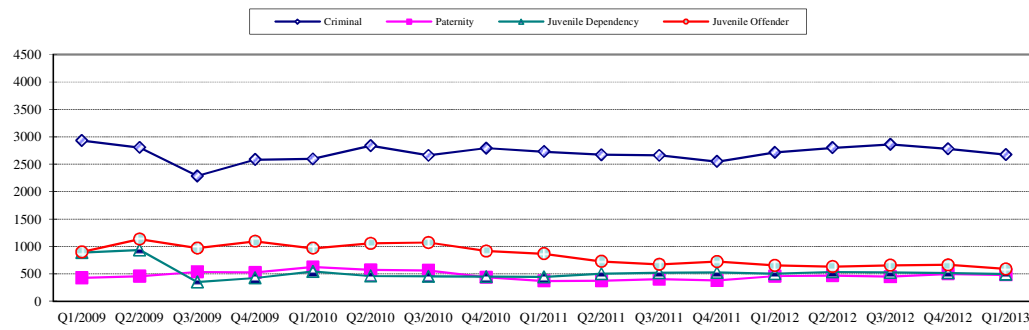


Chart 4-C. Active Pending Caseload at Quarter End:
Criminal, Juvenile Offender, Paternity and Dependency Cases Only



* Note: "General Civil" is specifically defined in this report. The category of "General Civil" does not include the following case types: domestic, probate, guardianship, adoption, paternity, mental illness, juvenile cases (dependency, at-risk youth, child-in-need of service), civil RALJ, and tax filings that don't require judicial resources ("matters filed with clerk"). Please check the Appendix for the cause codes in the "General Civil" category.

Table 5. Age of Pending Cases

King County Superior Court

Reporting Category	Age of Pending Cases and # of Cases in Each Age Interval							
	Q2/11	Q3/11	Q4/11	Q1/12	Q2/12	Q3/12	Q4/12	Q1/13*
Criminal (excl. RALJ): # of Cases	2671	2661	2549	2715	2798	2860	2780	2673
Age (days)								
Median (50 percentile)	106	109	116	103	104	110	126	116
95 percentile	570	577	601	648	691	692	706	695
# of Cases in Age Interval								
0 - 60 days (0 - 2 months)	876	854	814	980	928	844	760	833
61 - 120 days (3 - 4 months)	571	541	474	487	619	676	590	546
121 - 180 days (5 - 6 months)	396	348	343	348	362	405	422	315
181 - 270 days (7 - 9 months)	312	354	310	288	269	330	363	324
> 270 days (> 9 months)	516	564	608	612	620	605	645	655
General Civil: # of Cases	9279	9597	9153	9243	8912	8611	8431	8112
Age (days)								
Median (50 percentile)	164	166	173	173	172	188	189	179
95 percentile	575	576	578	597	594	601	641	637
# of Cases in Age Interval								
0 - 120 days (0 - 4 months)	3724	3858	3508	3671	3538	3148	3108	3112
121 - 240 days (5 - 8 months)	1976	2191	2089	1903	1846	2020	1804	1710
241 - 360 days (9 - 12 months)	1463	1411	1548	1513	1366	1327	1332	1238
361 - 540 days (13 - 18 months)	1538	1514	1397	1479	1524	1473	1410	1333
541 - 720 days (19 - 24 months)	404	438	425	468	422	405	487	419
> 720 days (> 24 months)	174	185	186	209	216	238	290	300
Asbestos Cases (civil)⁽¹⁾ : # of Cases	86	90	85	81	81	71	76	81
Age (days)								
Median (50 percentile)	542	550	485	522	563	410	524	388
95 percentile	2599	2416	1802	1893	1984	1747	3168	3244
# of Cases in Age Interval								
0 - 120 days (0 - 4 months)	23	13	7	7	12	11	7	20
121 - 240 days (5 - 8 months)	1	17	14	8	5	14	10	10
241 - 360 days (9 - 12 months)	7	3	16	16	12	8	11	8
361 - 540 days (13 - 18 months)	12	11	9	11	11	11	11	11
541 - 720 days (19 - 24 months)	10	11	12	9	7	6	7	6
> 720 days (> 24 months)	33	35	27	30	34	21	30	26
Domestic: # of Cases	4532	4538	4421	4556	4544	4637	4458	4562
Age (days)								
Median (50 percentile)	107	114	122	122	118	122	125	117
95 percentile	490	487	527	491	475	516	528	502
# of Cases in Age Interval								
0 - 120 days (0 - 4 months)	2443	2379	2188	2258	2275	2313	2158	2327
121 - 240 days (5 - 8 months)	1056	1226	1250	1244	1193	1274	1185	1218
241 - 360 days (9 - 12 months)	603	514	579	653	648	605	675	589
361 - 540 days (13 - 18 months)	243	227	201	211	236	239	227	221
> 540 days (> 18 months)	187	192	212	190	192	206	213	207
Probate: # of Cases	515	531	559	579	631	655	615	696
Age (days)								
Median (50 percentile)	602	659	706	663	608	605	697	559
95 percentile	2040	2112	2201	2175	2218	2243	2335	2371
# of Cases in Age Interval								
0 - 120 days (0 - 4 months)	99	100	104	119	122	93	109	144
121 - 240 days (5 - 8 months)	28	44	54	74	70	85	67	74
241 - 360 days (9 - 12 months)	31	20	37	38	65	68	59	64
361 - 540 days (13 - 18 months)	70	47	29	32	51	64	47	60
> 540 days (> 18 months)	287	320	335	316	323	345	333	354

Reflecting all documents received by 04/15/2013.

Table 5 (cont.). Age of Pending Cases

King County Superior Court

Reporting Category	Age of Pending Cases and # of Cases in Each Age Interval							
	Q2/11	Q3/11	Q4/11	Q1/12	Q2/12	Q3/12	Q4/12	Q1/13*
Guardianship: # of Cases	250	250	261	276	277	274	248	279
Age (days)								
Median (50 percentile)	67	60	80	60	62	73	69	73
95 percentile	617	652	507	550	538	605	543	560
# of Cases in Age Interval								
0 - 120 days (0 - 4 months)	165	162	158	173	186	169	157	172
121 - 240 days (5 - 8 months)	39	38	46	48	25	37	36	49
241 - 360 days (9 - 12 months)	22	22	29	21	31	22	21	24
361 - 540 days (13 - 18 months)	8	13	16	20	22	28	21	19
> 540 days (> 18 months)	16	15	12	14	13	18	13	15
Adoption: # of Cases	226	211	192	226	230	240	199	222
Age (days)								
Median (50 percentile)	119	150	141	150	145	172	271	216
95 percentile	2900	2731	1619	1431	1220	1282	1706	1393
# of Cases in Age Interval								
0 - 120 days (0 - 4 months)	113	99	92	102	107	90	55	88
121 - 240 days (5 - 8 months)	31	30	25	41	35	51	34	30
241 - 360 days (9 - 12 months)	24	22	23	19	18	21	28	24
361 - 540 days (13 - 18 months)	16	16	12	22	25	20	21	27
> 540 days (> 18 months)	42	44	40	42	45	58	61	53
Paternity: # of Cases	372	401	377	456	468	448	500	479
Age (days)								
Median (50 percentile)	90	74	94	59	85	95	92	102
95 percentile	312	269	277	264	263	235	251	294
# of Cases in Age Interval								
0 - 120 days (0 - 4 months)	246	281	225	318	320	291	303	262
121 - 240 days (5 - 8 months)	88	96	119	106	116	138	165	176
241 - 360 days (9 - 12 months)	28	13	22	25	25	12	25	32
361 - 540 days (13 - 18 months)	7	10	9	6	5	6	5	8
> 540 days (> 18 months)	3	1	2	1	2	1	2	1
Mental Illness: # of Cases	463	548	530	540	350	281	311	378
Age (days)								
Median (50 percentile)	836	770	894	962	186	97	104	172
95 percentile	2138	2153	2246	2337	1334	1512	1595	1595
# of Cases in Age Interval								
0 - 120 days (0 - 4 months)	62	124	100	95	150	163	181	137
121 - 240 days (5 - 8 months)	27	32	63	49	42	27	93	134
> 240 days (> 8 months)	374	392	367	396	158	91	37	107
Juvenile Dependency: # of Cases	503	518	522	503	534	523	516	492
Age (days)								
Median (50 percentile)	100	131	129	110	108	150	113	135
95 percentile	560	652	711	788	878	949	1026	1116
# of Cases in Age Interval								
0 - 60 days (0 - 2 months)	182	166	148	156	185	137	169	155
61 - 120 days (3 - 4 months)	22	79	91	102	100	93	103	72
121 - 180 days (5 - 6 months)	90	61	69	58	46	67	39	61
181 - 270 days (7 - 9 months)	45	97	36	48	44	46	50	41
> 270 days (> 9 months)	77	115	178	139	159	180	155	163
Juvenile ARY/CHINS: # of Cases	90	92	94	91	98	89	104	101
Age (days)								
Median (50 percentile)	136	217	222	244	206	333	209	276
95 percentile	1947	2039	2131	2222	2313	2405	2444	2534
# of Cases in Age Interval								
0 - 60 days (0 - 2 months)	29	19	26	29	29	19	24	26
61 - 120 days (3 - 4 months)	14	11	11	6	11	10	17	7
121 - 180 days (5 - 6 months)	6	15	8	6	6	7	5	6
181 - 270 days (7 - 9 months)	5	6	7	7	9	6	11	11
> 270 days (> 9 months)	36	41	42	43	43	47	47	51

* Reflecting all documents received by 04/15/2013.

Table 5 (cont.). Age of Pending Cases

King County Superior Court

Reporting Category	Age of Pending Cases and # of Cases in Each Age Interval							
	Q2/11	Q3/11	Q4/11	Q1/12	Q2/12	Q3/12	Q4/12	Q1/13*
Juvenile Truancy: # of Cases	329	129	165	145	364	208	308	382
Age (days)								
Median (50 percentile)	561	137	46	11	69	158	67	26
95 percentile	2768	298	381	472	440	606	588	673
# of Cases in Age Interval								
0 - 60 days (0 - 2 months)	79	16	96	97	128	11	151	226
61 - 120 days (3 - 4 months)	38	5	4	4	193	16	18	19
121 - 180 days (5 - 6 months)	17	64	1	13	1	129	0	17
181 - 270 days (7 - 9 months)	11	32	41	0	11	21	93	1
> 270 days (> 9 months)	184	12	23	31	31	31	46	119
Juvenile Offender: # of Cases	726	670	723	653	631	655	663	588
Age (days)								
Median (50 percentile)	73	78	66	59	59	63	77	80
95 percentile	629	735	657	682	738	800	552	681
# of Cases in Age Interval								
0 - 60 days (0 - 2 months)	315	289	344	332	320	312	265	250
61 - 120 days (3 - 4 months)	151	118	132	129	129	155	194	114
121 - 180 days (5 - 6 months)	70	62	59	50	49	51	81	76
181 - 270 days (7 - 9 months)	46	54	38	34	40	25	43	63
> 270 days (> 9 months)	144	147	150	108	93	112	80	85
Criminal RALJ: # of Cases	144	145	132	132	136	134	142	144
Age (days)								
Median (50 percentile)	139	136	162	141	144	139	147	160
95 percentile	311	368	334	424	510	371	400	420
# of Cases in Age Interval								
0 - 60 days (0 - 2 months)	38	30	21	31	36	29	27	26
61 - 120 days (3 - 4 months)	28	33	25	25	19	29	30	29
121 - 180 days (5 - 6 months)	32	29	28	23	35	25	28	30
181 - 270 days (7 - 9 months)	25	35	36	31	24	33	35	30
> 270 days (> 9 months)	21	18	22	22	22	18	22	29
Civil RALJ: # of Cases	33	30	34	39	44	43	45	32
Age (days)								
Median (50 percentile)	94	152	120	125	147	102	134	192
95 percentile	1380	1472	1564	1655	961	837	431	376
# of Cases in Age Interval								
0 - 60 days (0 - 2 months)	7	7	10	7	9	12	8	5
61 - 120 days (3 - 4 months)	12	3	7	10	11	12	11	3
121 - 180 days (5 - 6 months)	6	12	5	7	6	6	13	8
181 - 270 days (7 - 9 months)	2	1	2	3	7	6	7	7
> 270 days (> 9 months)	6	7	10	12	11	7	6	9

* Reflecting all documents received by 04/15/2013.

Table 6. Seattle vs. Regional Justice Center (KNT): Filing, Resolution, Pending Caseload (%)

King County Superior Court

	Q1/12		Q2/12		Q3/12		Q4/12		Q1/13	
	SEA	KNT	SEA	KNT	SEA	KNT	SEA	KNT	SEA	KNT
Filings Total <i>(excl. filings with clerk)</i>	65%	35%	65%	35%	65%	35%	65%	35%	64%	36%
Criminal (excl. RALJ)	59%	41%	58%	42%	56%	44%	52%	48%	55%	45%
General Civil (excl. RALJ)	59%	41%	57%	43%	57%	43%	57%	43%	57%	43%
Domestic	62%	38%	65%	35%	62%	38%	64%	36%	63%	37%
Probate	79%	21%	78%	22%	78%	22%	78%	22%	78%	22%
Guardianship	57%	43%	64%	36%	61%	39%	63%	37%	65%	45%
Adoption	81%	19%	73%	27%	78%	22%	75%	25%	71%	29%
Paternity	48%	52%	50%	50%	47%	53%	51%	49%	52%	48%
Mental Illness	100%	---	100%	---	100%	---	100%	---	100%	---
Juvenile Dependency	52%	48%	56%	44%	55%	45%	55%	45%	63%	37%
Juvenile ARY/CHINS	46%	54%	47%	53%	61%	39%	44%	56%	46%	54%
Juvenile Truancy	40%	60%	56%	44%	68%	32%	44%	56%	34%	66%
Juvenile Offender	100%	---	100%	---	100%	---	100%	---	100%	---
Criminal RALJ	96%	4%	92%	8%	98%	2%	93%	7%	90%	10%
Civil RALJ	67%	33%	77%	23%	100%	---	79%	21%	83%	17%
Resolution Total <i>(excl. filings with clerk)</i>	65%	35%	64%	36%	64%	36%	65%	35%	64%	36%
Criminal (excl. RALJ)	56%	44%	56%	44%	57%	43%	58%	42%	56%	44%
General Civil (excl. RALJ)	59%	41%	57%	43%	57%	43%	57%	43%	57%	43%
Domestic	60%	40%	62%	38%	63%	37%	64%	36%	63%	37%
Probate	79%	21%	78%	22%	78%	22%	78%	22%	78%	22%
Guardianship	62%	38%	61%	39%	57%	43%	66%	34%	60%	40%
Adoption	81%	19%	76%	24%	75%	25%	77%	23%	72%	28%
Paternity	49%	51%	52%	48%	41%	59%	48%	52%	56%	44%
Mental Illness	100%	---	100%	---	100%	---	100%	---	100%	---
Juvenile Dependency	40%	60%	46%	54%	48%	52%	64%	36%	49%	51%
Juvenile ARY/CHINS	43%	57%	39%	61%	41%	59%	48%	52%	39%	61%
Juvenile Truancy	38%	62%	27%	73%	47%	53%	62%	38%	39%	61%
Juvenile Offender	100%	---	100%	---	100%	---	100%	---	100%	---
Criminal RALJ	94%	6%	89%	11%	87%	13%	96%	4%	87%	13%
Civil RALJ	75%	25%	67%	33%	87%	13%	65%	35%	100%	---
Pending Total <i>(excl. filings with clerk)</i>	67%	33%	67%	33%	67%	33%	66%	34%	66%	34%
Criminal (excl. RALJ)	51%	49%	52%	48%	52%	48%	51%	49%	49%	51%
General Civil (excl. RALJ)	69%	31%	69%	31%	69%	31%	69%	31%	69%	31%
Domestic	61%	39%	62%	38%	61%	39%	61%	39%	61%	39%
Probate	86%	14%	86%	14%	86%	14%	85%	15%	84%	16%
Guardianship	61%	39%	64%	36%	66%	34%	60%	40%	63%	37%
Adoption	78%	22%	76%	24%	78%	22%	76%	24%	76%	24%
Paternity	45%	55%	44%	56%	48%	52%	49%	51%	47%	53%
Mental Illness	100%	---	100%	---	100%	---	100%	---	100%	---
Juvenile Dependency	65%	35%	68%	32%	68%	32%	63%	37%	69%	31%
Juvenile ARY/CHINS	69%	31%	69%	31%	79%	21%	71%	29%	71%	29%
Juvenile Truancy	46%	54%	64%	36%	72%	28%	64%	36%	55%	45%
Juvenile Offender	100%	---	100%	---	100%	---	100%	---	100%	---
Criminal RALJ	90%	10%	91%	9%	95%	5%	93%	7%	94%	6%
Civil RALJ	85%	15%	86%	14%	93%	7%	89%	11%	81%	19%

Reflecting all documents received by 04/15/2013.

Table 7. Quarterly Utilization of Pro Tem Judges/Commissioners ⁽¹⁾

Category	Q3/10	Q4/10	Q1/11	Q2/11	Q3/11	Q4/11	Q1/12	Q2/12	Q3/12	Q4/12	Q1/13
Grand Total	1029	1337	932	1354	850	1157	869	1173	1304	864	814
Judge FTE Equivalent ⁽³⁾	2.3	3.0	2.1	3.0	1.9	2.6	1.9	2.6	2.9	1.9	1.8
By Work Type											
On Trial/Hearings	859	1103	773	1110	552	856	367	747	695	302	408
On Preparation	168	235	159	200	151	250	231	247	320	164	193
Other or Unspecified Activity	2	0	0	43	147	51	272	179	289	397	213
By Case Type											
Criminal	0	62	43	23	0	14	17	28	38	17	0
Civil	541	692	590	654	487	501	266	543	468	336	395
Domestic	162	297	129	414	220	409	426	424	532	298	311
Probate	0	0	0	0	0	0	0	0	0	0	0
Guardianship	0	0	0	0	0	0	0	0	0	0	0
Adoption	0	0	0	0	0	0	0	0	0	0	0
Paternity	0	0	0	0	0	0	0	0	0	0	0
Mental Illness	0	0	0	0	0	0	0	0	0	0	0
Juvenile Dependency	69	47	34	34	79	178	138	137	194	79	85
Juvenile Truancy	43	30	54	84	24	0	0	16	0	30	11
Juvenile Offender	214	211	83	139	39	54	23	25	74	7	12
Other or Unspecified	0	0	0	7	0	0	0	0	0	98	0
By Calendar Type											
Criminal Plea	0	0	35	19	0	14	17	28	25	17	0
Criminal Trial	0	0	52	0	0	0	0	0	13	0	0
Civil Trial	30	66	0	22	83	20	25	70	49	0	83
Individual Calendar	0	0	0	0	0	0	0	0	0	0	0
Family Law	290	429	279	426	227	405	426	432	532	298	323
Ex Parte	273	316	234	343	312	206	133	255	332	255	157
Mental Illness	51	81	66	145	45	262	108	159	86	88	155
Juvenile Dependency	118	109	89	147	95	192	131	137	179	75	85
Juvenile CHINS/ARY	0	0	0	0	0	0	0	0	0	0	0
Juvenile Truancy	43	30	54	80	30	0	7	9	15	4	0
Juvenile Offender	214	211	83	139	39	44	23	25	74	30	12
Other or Unspecified	9	96	41	33	21	0	0	0	0	98	0
By Reason											
Congestion	222	303	227	164	159	306	125	174	86	66	155
Medical Coverage	132	215	255	91	114	134	73	81	199	102	201
Vacation	547	623	319	672	314	603	451	524	571	421	307
Training	129	196	131	155	227	85	191	324	154	84	58
Judicial Conference	0	0	0	272	0	0	0	51	25	0	4
Others	0	0	0	0	36	27	29	15	270	192	89

(1) This table is based on the time sheet for compensation

(2) Judge FTE Equivalent = # of hours / [7.5 hours/day * 20 days/month * 3 months] = # of hours/450.

The statistics on Pro Tem judge/commissioner use provide information on the external help the court has obtained in order to handle the workload. The data are collected on the time sheet for compensation (therefore it does not include unpaid volunteering or visiting judges/commissioners). The database on Pro Tem judges/commissioners is managed by the Administrative Services Department (ASD) of King County Superior Court. The Pro Tem total hours presented in this section are provided quarterly by ASD.

Table 8. Family Law Activity

	3RD QTR, 2011		4TH QTR, 2011		1ST QTR, 2012		2ND QTR, 2012		3RD QTR, 2012		4TH QTR, 2012		1ST QTR, 2013	
	HRGS	ORDS	HRGS	ORDS	HRGS	ORDS	HRGS	ORDS	HRGS	ORDS	HRGS	ORDS	HRGS	ORDS
SEATTLE														
FAM.LAW	769	2220	765	2096	686	2255	663	2069	677	2241	410	2103	354	1883
DAILY AVG.	13	36	13	34	11	37	11	34	11	37	7	34	6	31
PATERNITY	465	1900	476	1602	523	1727	404	1622	386	1776	62	1668	55	1571
DAILY AVG.	8	31	8	26	9	28	7	27	6	29	1	27	1	26
DOM. VIOL.	354	497	303	477	309	498	397	560	285	557	183	526	204	513
DAILY AVG.	6	8	5	8	5	8	7	9	5	9	3	9	3	8
KENT														
FAM.LAW	519	1913	620	1759	808	1955	741	1859	620	1655	713	1714	730	1845
DAILY AVG.	9	31	10	29	13	32	12	30	10	27	12	28	12	30
PATERNITY	321	1281	380	1247	442	1279	406	1241	392	1313	376	1183	366	1157
DAILY AVG.	5	21	6	20	7	21	7	20	6	22	6	19	6	19
DOM. VIOL.	373	571	381	512	373	467	438	526	455	543	433	516	393	489
DAILY AVG.	6	9	6	8	6	8	7	9	7	9	7	8	6	8
GRAND TOTAL														
FAM.LAW	2801	8382	2925	7693	3141	8181	3049	7877	2815	8085	2177	7710	2102	7458
OVERALL DAILY AVG.	46	137	48	126	51	134	50	129	46	133	36	126	34	122

The statistics on family law and Ex Parte activity are obtained directly from SCOMIS using the appropriate docket codes.

Table 9. Ex Parte Activity

SEATTLE	1ST QTR, 2012		2ND QTR, 2012		3RD QTR, 2012		4TH QTR, 2012		1ST QTR, 2013	
	HRGS	ORDS	HRGS	ORDS	HRGS	ORDS	HRGS	ORDS	HRGS	ORDS
ADOP/PAT	86	233	101	294	121	317	139	463	48	206
DOM. VIOL.	21	355	24	369	22	423	9	372	6	343
OTH. CIVIL	327	589	237	573	223	513	284	495	311	511
DOMESTIC	762	2163	730	2185	762	2255	832	2475	727	2137
PROB/GDN	1116	2502	953	4188	957	3211	1226	2487	1355	2489
SUBTOTAL	2312	5842	2045	7609	2085	6719	2490	6292	2447	5686
DAILY AVG.	38	96	34	125	34	110	41	103	40	93

SEATTLE VIA CLERK (starting Jan 2009)	1ST QTR, 2012		2ND QTR, 2012		3RD QTR, 2012		4TH QTR, 2012		1ST QTR, 2013	
	----	ORDS	----	ORDS	----	ORDS	----	ORDS	----	ORDS
ADOP/PAT	----	118	----	134	----	137	----	153	----	109
DOM. VIOL.	----	3	----	2	----	5	----	3	----	6
OTH. CIVIL	----	7957	----	8302	----	7567	----	6421	----	5581
DOMESTIC	----	1220	----	1417	----	1320	----	1339	----	1183
PROB/GDN	----	715	----	830	----	720	----	743	----	718
SUBTOTAL	----	10013	----	10685	----	9749	----	8659	----	7597
DAILY AVG.	----	164	----	175	----	160	----	142	----	125

SEATTLE MAIL-IN	1ST QTR, 2012		2ND QTR, 2012		3RD QTR, 2012		4TH QTR, 2012		1ST QTR, 2013	
	----	ORDS	----	ORDS	----	ORDS	----	ORDS	----	ORDS
ADOP/PAT	----	2	----	2	----	0	----	0	----	1
DOM. VIOL.	----	0	----	0	----	0	----	0	----	1
OTH. CIVIL	----	142	----	135	----	105	----	142	----	135
DOMESTIC	----	28	----	42	----	45	----	37	----	22
PROB/GDN	----	84	----	85	----	74	----	84	----	85
SUBTOTAL	----	256	----	264	----	224	----	263	----	244
DAILY AVG.	----	4	----	4	----	4	----	4	----	4

Note: Ex Parte via Clerk started in January 2009.

Table 9 (cont). Ex Parte Activity

KENT	1ST QTR, 2012		2ND QTR, 2012		3RD QTR, 2012		4TH QTR, 2012		1ST QTR, 2013	
	HRGS	ORDS	HRGS	ORDS	HRGS	ORDS	HRGS	ORDS	HRGS	ORDS
ADOP/PAT	19	72	41	138	47	122	52	136	22	72
DOM. VIOL.	3	432	5	457	4	441	12	409	3	403
OTH. CIVIL	272	411	307	507	325	528	303	475	295	483
DOMESTIC	425	1432	464	1441	449	1404	441	1375	359	1297
PROB/GDN	375	837	430	1357	400	1090	382	833	406	854
SUBTOTAL	1094	3184	1247	3900	1225	3585	1190	3228	1085	3109
DAILY AVG.	18	52	20	64	20	59	20	53	18	51

KENT VIA CLERK (starting Jan 2009)	1ST QTR, 2012		2ND QTR, 2012		3RD QTR, 2012		4TH QTR, 2012		1ST QTR, 2013	
	HRGS	ORDS	HRGS	ORDS	HRGS	ORDS	HRGS	ORDS	HRGS	ORDS
ADOP/PAT	----	37	----	37	----	48	----	51	----	60
DOM. VIOL.	----	1	----	2	----	1	----	0	----	3
OTH. CIVIL	----	1196	----	1383	----	1187	----	2247	----	3376
DOMESTIC	----	331	----	314	----	322	----	450	----	471
PROB/GDN	----	118	----	309	----	285	----	297	----	266
SUBTOTAL	----	1683	----	2045	----	1843	----	3045	----	4176
DAILY AVG.	----	28	----	34	----	30	----	50	----	68

KENT MAIL-IN	1ST QTR, 2012		2ND QTR, 2012		3RD QTR, 2012		4TH QTR, 2012		1ST QTR, 2013	
	HRGS	ORDS	HRGS	ORDS	HRGS	ORDS	HRGS	ORDS	HRGS	ORDS
ADOP/PAT	----	0	----	0	----	0	----	0	----	0
DOM. VIOL.	----	0	----	0	----	0	----	0	----	0
OTH. CIVIL	----	64	----	42	----	21	----	31	----	26
DOMESTIC	----	25	----	22	----	21	----	16	----	19
PROB/GDN	----	25	----	30	----	29	----	20	----	26
SUBTOTAL	----	114	----	94	----	71	----	67	----	71
DAILY AVG.	----	2	----	2	----	1	----	1	----	1

ALL SEATTLE KENT and EASTSIDE	1ST QTR, 2012		2ND QTR, 2012		3RD QTR, 2012		4TH QTR, 2012		1ST QTR, 2013	
	HRGS	ORDS	HRGS	ORDS	HRGS	ORDS	HRGS	ORDS	HRGS	ORDS
GRAND TOTAL	3406	21093	3292	24598	3310	22192	3680	21555	3532	20884
DAILY AVERAGE	55.8	345.8	54.0	403.2	54.3	363.8	60.3	353.4	57.9	342.4

Note: Ex Parte via Clerk started in January 2009.

Appendix Glossary and Definition

General Definition

Active Status

A case is active if it is not on suspense status (see Suspense Status).

Case

A case is defined as a filing with an assigned case number (or a case number plus a defendant connection code in pre-1990 criminal filings).

Completion

A case is completed when dispositive document is filed with the court following resolution.

Jury Trial

A hearing is reported as a jury trial if the jury is impaneled.

New Case

A new case is an original filing with new case number assigned.

Non-Jury Trial

A hearing is reported as a non-jury trial if an opening statement is made, waived, or reserved. A juvenile fact finding hearings is reported as a non-jury trial.

Pending Case

A case is defined as pending if it is unresolved and active (not in suspense).

Reactivated Case

A case returns to active status from suspense status during the reporting period.

Re-opened Cases

A case is re-opened if it has been previously completed but returns to the court for supplement or change of the original case resolution. A re-opened case does not have a new case number. Only resolved cases can be "re-opened". (Note: measurement not available as of July 1996. SCOMIS capacity may exist after conversion to DB2 in the future).

Resolution

A case is resolved if all issues in the complaint are fully adjudicated.

Suspended Case

A case is placed in suspense status from active status during the reporting period.

Suspense Status

A case is on suspense status if it is on warrant, appeal, stay, mediation, arbitration ("Deferred Prosecution" is not a suspense status, but is treated as a resolution).

Trial

A hearing set before a judge or jury in which all the issues in the case are meant to be resolved. A trial normally includes opening statements to the court or jury stating what the evidence will show, introduction of witnesses and exhibits for direct and cross examination, final arguments to the court or jury in which counsel argue both the evidence and the law, and judgment by the court or jury stating what the facts of the case are and what law applies to the facts. In a jury case, it also includes the selection of the jury. A trial can be held

for one or more cases. A single trial may be held to adjudicate more than one case (as defined above).

Post-resolution Modifications

In this report, we also report the post-resolution modifications for case type 3 (domestic) and 5 (paternity). These numbers are based on the tracks (DMOD and DTBA) opened after the original resolution date (i.e., if the track beginning date is after the resolution date).

Section I. Filing Activity

Additional Filings with Clerk

Filings with clerk without assigning a SCOMIS case number. This reporting category consists of search warrants, wire taps, extradition, oaths and orders pertaining to Pro Tem judge/commissioners/Court

Reporters/Bailiffs, and other "non-case" filings as recorded under 12050 system.

Annual Filings

Total number of new case filings during the calendar year (January 1 to December 31).

Adoption Cases

This reporting category includes the following "cause-of-action" codes within SCOMIS case type 5:

- Relinquishment (REL)
- Termination of Parent/Child Relationship (TER)
- Adoption (ADP)
- Miscellaneous (MSC)
- Name Change - Confidential (CHN)
- Initial Pre-Placement Report Filed with Clerk (PPR)

General Civil Cases

"General Civil" cases include all civil matters other than Domestic, Probate, Guardianship, Adoption, and appeals from courts of limited jurisdiction and "Matters Filed with Clerk". "General civil" cases include small claims as identified by the "Small Claim Track". This reporting category includes the following "cause-of-action" codes within SCOMIS case type 2:

- Administrative Law Review (ALR)
- Change of Name - Non-Confidential (CHN)
- Collection (COL)
- Commercial (COM)
- Condemnation (CON)
- Domestic Violence Protection (DVP)
- Emancipation of Minor (EOM)
- Foreclosure (FOR)
- Civil Harassment (HAR)
- Injunction (INJ)
- Other Malpractice (MAL)
- Medical Malpractice (MED)
- Meretricious Relationship (MER)
- Malicious Harassment (MHA)
- Miscellaneous (MSC)
- Minor Settlement (MST) - as of 10/1/96, under Guardianship
- Petition of Civil Commitment- Sexual Predator (PCC)
- Property Fairness (PFA)

- Personal Injury (PIN)
- Property Damage (PRP)
- Quiet Title (QT)
- Small Claims (LCA/LCI on “Small Claim Track”)
- Seizure of Property from the Commission of a Crime (SPC)
- Seizure of Property Resulting from a Crime (SPR)
- Tort Motor Vehicle (TMV)
- Tort Other (TTO)
- Unlawful Detainer (UND)
- Wrongful Death (WDE)
- Writ of Habeas Corpus (WHC)
- Miscellaneous Writ (WMW)
- Writ of Mandamus (WRM)
- Writ of Restitution (WRR)
- Writ of Review (WRV)

Civil RALJ Cases

Civil appeals from courts of limited jurisdiction (excluding small claims as identified by the “Small Claim Track”). Civil RALJ includes the following “cause-of-action” reporting categories:

- Lower Court Appeal - Civil and “Not a Small Claim”
- Lower Court Appeal - Infraction and “Not a Small Claim”

Note: The Civil RALJ cases are determined based on both SCOMIS “cause-of-action” code (LCA and LCI) within SCOMIS case type 2 and the “Small Claim Track”.

Criminal Cases (excl. RALJ)

Adult criminal cases, excluding appeals from courts of limited jurisdiction. This reporting category includes the following crime categories within SCOMIS case type 1:

- Homicide
- Sex Crime
- Robbery
- Assault
- Theft/Burglary
- Motor Vehicle Theft
- Controlled Substance
- Other Felony
- Others (Misdemeanor, Non-charge Case)

Criminal RALJ Cases

Criminal appeals from courts of limited jurisdiction. This reporting category includes all SCOMIS case type 1 cases that have an appeal from lower court field of “Yes”.

Domestic Cases

This reporting category includes the following “cause-of-action” codes within SCOMIS case type 3:

- Annulment – Invalidity (INV)
- Child Custody (CUS)
- Dissolution With Children Of The Marriage (DIC)
- Dissolution With No Children Of The Marriage (DIN)
- Dissolution of Domestic Partnership – With Children (DPC)
- Dissolution of Domestic Partnership – With No Children (DPN)
- Foreign Judgment (FJU)
- Invalidity – Domestic Partnership (INP)
- Mandatory Wage Assignment (MWA)
- Miscellaneous (MSC)
- Modification (MOD)
- Modification – Support Only (MDS)
- Out-Of-State Child Custody (OSC)
- Parenting Plan / Child Support (PPS)
- Reciprocal, Respondent In-County (RIC)
- Reciprocal, Respondent Out-of-County (ROC)
- Legal Separation (SEP)
- Legal Separation – Domestic Partnership (SPD)

Guardianship Cases

This reporting category includes the following “cause-of-action” codes within SCOMIS case type 4:

- Guardianship/Estate (G/E)
- Guardianship (GND)

- Limited Guardianship (LGD)
- Minor Settlement (MST)

Juvenile ARY/CHINS Cases

Juvenile dependency cases, excluding truancy cases and DEP cause code. This reporting category includes following “cause-of-action” codes within SCOMIS case type 7:

- Alternative Residential Placement (ARP)
- At-Risk Youth (ARY)
- Child in Need of Service (CNS)
- Termination (TER)

Juvenile Dependency Cases

This reporting category includes following “cause-of-action” codes within SCOMIS case type 7:

- Dependency (DEP)

Juvenile Offender Cases

This reporting category includes the following crime categories in SCOMIS case type 8:

- Homicide
- Sex Crime
- Robbery
- Assault
- Theft/Burglary
- Motor Vehicle Theft
- Controlled Substance
- Other Felony
- Others (Misdemeanor, Non-charge Case)

Juvenile Truancy Cases

Mandatory truancy filings started on 10/01/1995. This reporting category includes the following “cause-of-action” code within SCOMIS case type 7:

- Truancy (TRU)

Matters Filed with Clerk

Filings with clerk (case numbers assigned), but requiring little or no judicial action. This reporting category includes the following “cause-of-action” codes within SCOMIS case type 2:

- Abstract of Judgment (ABJ)
- Foreign Judgment (FJU)
- Tax Warrant (TAX)
- Transcripts of Judgment (TRJ)

Mental Illness Cases

This reporting category includes all “cause-of-action” codes within SCOMIS case type 6:

- Alcoholic Treatment (ALT)
- Mental Illness - Adult (MI)
- Mental Illness - Juvenile (MIJ)

Paternity Cases

This reporting category includes the following “cause-of-action” codes within SCOMIS case type 5:

- Modification (MOD)
- Paternity (PAT)
- Paternity/URES/UFSA (PUR)

Probate Cases

This reporting category includes the following “cause-of-action” codes within SCOMIS case type 4:

- Absentee (ABS)
- Disclaimer (DSC)
- Estate (EST)
- Foreign Will (FNW)
- Miscellaneous (MSC)
- Non-Probate Notice to Creditors (NNC)
- Will Only (WLL)

Total Cases

New cases with case numbers assigned, excluding “Matters Filed with Clerk” and “Additional Filings with Clerk”.

Year-to-Date Filings

Total number of new filings since the beginning of calendar year (January 1) to the end of reporting period.

Section II. Resolution Category

Adoption - Resolved by Trial

Court Decision after Non-Jury Trial (CDAT)

Adoption - Uncontested

Consolidated Case (CONS)
Uncontested Resolution (UNDS)

Adoption - Settlement/Dismissal

Closed by Court Order after a Hearing (CLCO)
Dismissal without Trial (DSM)
Dismissal after Non-Jury Trial Commencement (DAT)
Settled after Non-Jury Trial Commencement (SAT)
Settled by Parties/Agreed Judgment (STPR)

Adoption - Closure by Clerk

Dismissal/Closure by Clerk (DSCK)

Adoption - Others

Change of Venue/Jurisdiction (CHV)
Other Non-specified Resolutions

Civil - Resolved by Jury Trial

Jury Verdict after Trial (JVAT)

Civil - Resolved by Non-Jury Trial

Court Decision after Non-Jury Trial (CDAT)

Civil - Summary Judgment

Summary Judgment (SMJG)

Civil - Default/Uncontested

Consolidated Case (CONS)
Default Judgment (DFJG)
Uncontested Resolution (UNDS)

Civil - Arbitration

Settle by Arbitration (ARBA)

Civil - Settlement/Dismissal

Closed by Court Order after a Hearing (CLCO)
Dismissal after Non-Jury Trial (DAT)
Dismissal after Jury Trial (DJT)
Dismissal (DSM)
Settled after Non-Jury Trial Commencement (SAT)
Settled after Jury Trial Commencement (SJT)
Settled by Parties/Agreed Judgment (STPR)

Civil - Closure by Clerk

Dismissal/Closure by Clerk (DSCK)

Civil - Others

Transferred to Federal bankruptcy Court (BANK)
Change of Venue/Jurisdiction (CHV)
Other Non-specified Resolutions

Civil RALJ - RALJ Decision

Court Decision to Affirm Appeal/review (CDTA)
Court Decision to Modify Appeal/Review (CDTM)
Court Decision to Reverse Appeal/review (CDTR)

Civil RALJ - Dismissal

Dismissal and Remand of Appeal/Review (DSRM)

Civil RALJ - Others

Other Non-specified Resolutions

Comparison with Court Standard

Percentage of cases actually falling within the Court’s standard benchmark.

Court Standard

Benchmarks set by a state advisory committee and adopted by the court indicating percentage of cases to be resolved at certain age (in months, 1 month = 30 days as used in the Advisory Case Processing Time Standard as published in the Court Rule).

Court standard is based on timelines as suggested by State Advisory Committee. For a case type with no time standard, the standard for a similar case type is adopted if appropriate.

Criminal: 90% by 4 months, 98% by 6 months, 100% by 9 months.

Civil: 90% by 12 months, 98% by 18 months, 100% by 24 months.

Domestic: 90% by 8 months, 98% by 10 months, 100% by 14 months.

Probate/Guardianship: 90% by 8 months, 98% by 18 months, 100% by 36 months.

Adoption/Paternity: 90% by 8 months, 98% by 10 months, 100% by 14 months.

Mental Illness/Juvenile Truancy: No standard yet.

Juvenile Dependency: 90% by 8 months, 98% by 10 months, 100% by 14 months.

Juvenile Offender: 90% by 4 months, 98% by 6 months, 100% by 9 months.

Criminal RALJ/Civil RALJ: 90% by 4 months, 98% by 5 months, 100% by 6 months.

Criminal - Resolved by Jury Trial

Acquittal by Jury (AQJV)
Convicted - Jury Verdict after Trial (CVJV)

Criminal - Resolved by Non-Jury Trial

Acquittal by Court (AQCT)
Convicted - Court Decision after Non-Jury Trial (CVCT)

Criminal - Resolved by Guilty Plea

Guilty Plea (GP)
Guilty Plea after Non-Jury Trial Commencement (GPAT)
Guilty Plea after Jury Trial Commencement (GPJT)

Criminal - Dismissal

Dismissal after Non-Jury Trial Commencement (DAT)
Dismissal after Jury Trial Commencement (DJT)
Dismissal (DSM)

Criminal - Others

Change of Venue (CHV)
Consolidated Case (CONS)
Continued Order of Prosecution with Completion (CTOP)*
Deferred Prosecution (DFPD)
Dismissal/Closure by Clerk (DSCK)
Governor’s warrant (GW)
Not Guilty by Reason of Insanity (NGRI)
Uncontested Resolution (UNDS)
Waiver of Extradition (WE)
Other Non-specified Resolutions

* Note: For adult criminal cases, “CTOP” does not necessarily constitute resolution. An adult criminal case with a “CTOP” as resolution code is counted as a resolved case only if a completion code exists along with the “CTOP”. If the resolution code is CTOP and there is no completion code, then the case is treated as unresolved. The primary reason for combining “CTOP” with a completion code is to determine

resolution for drug court cases (CTOP is entered in the SCOMIS resolution field as soon as a defendant enrolls in Drug Court). This rule on “CTOP” applies to adult criminal cases only.

Criminal RALJ - RALJ Decision

Court Decision to Affirm Appeal/review (CDTA)
Court Decision to Modify Appeal/Review (CDTM)
Court Decision to Reverse Appeal/review (CDTR)

Criminal RALJ - Dismissal

Dismissal and Remand of Appeal/Review (DSRM)

Criminal RALJ - Others

Other Non-specified Resolutions

Domestic - Resolved by Trial

Court Decision after Non-Jury Trial (CDAT)

Domestic - Default/Uncontested

Consolidated Case (CONS)
Default Judgment (DFJG)
Uncontested Resolution (UNDS)

Domestic - Settlement/Dismissal

Settled by Arbitration (ARBA)
Closed by Court Order after a Hearing (CLCO)
Dismissal after Non-Jury Trial Commencement (DAT)
Dismissal (DSM)
Settled after Non-Jury Trial Commencement (SAT)
Settled by Parties/Agreed Judgment (STPR)

Domestic - Closure by Clerk

Dismissal/Closure by Clerk (DSCK)

Domestic - Others

Change of Venue/Jurisdiction (CHV)
Summary Judgment (SMJG)
Other Non-specified Resolutions

Guardianship - Guardian Appointed

Guardian Appointed (PRGA)

Guardianship - Dismissal

Closed by Court Order after a Hearing (CLCO)
Dismissal (DSM)

Guardianship - Closure by Clerk

Dismissal/Closure by Clerk (DSCK)

Guardianship - Others

Change of Venue/Jurisdiction (CHV)
Consolidated Case (CONS)
Uncontested Resolution (UNDS)
Other Non-specified Resolutions

Juvenile Dependency - Finding of Dependency

Approved Petition (APP)

Juvenile Dependency - Dismissal

Dismissal (DSM)

Juvenile Dependency - Others

Change of Venue/Jurisdiction (CHV)
Consolidated Case (CONS)
Transfer of Jurisdiction (TRJU)
Other Non-specified Resolutions

Juvenile Offender - Resolved by Trial

Acquittal by Court (AQCT)
Convicted - Court Decision after Adjudictory Hearing (CVCT)

Juvenile Offender - Resolved by Guilty Plea

Guilty Plea before Adjudictory Hearing Commencement (GP)
Guilty Plea after Adjudictory Hearing Commencement (GPAT)

Juvenile Offender - Dismissal

Dismissal after Adjudictory Hearing Commencement (DAT)
Dismissal (DSM)

Juvenile Offender - Others

Change of venue (CHV)
Dismissal/Closure by Clerk (DSCK)
Consolidated Case (CONS)

Continued Prosecution (CTOP)
Decline of Jurisdiction (DECL)
Uncontested Resolution (UNDS)
Other Non-specified Resolutions

Juvenile Truancy - Finding of Truancy

Approved Petition (APP)

Juvenile Truancy - Dismissal

Dismissal (DSM)

Juvenile Truancy - Others

Change of Venue (CHV)
Consolidated Case (CONS)
Transfer of Jurisdiction (TRJU)
Other Non-specified Resolutions

Mental Illness - Court Decision to Commit

Court Decision to Commit (CDTC)

Mental Illness - Closed by Court

Closed by Court (CLCO)

Mental Illness - Dismissal

Dismissal (DSM)

Mental Illness - Others

Change of Venue/Jurisdiction (CHV)
Uncontested Resolution (UNDS)
Other Non-specified Resolutions

Paternity - Resolved by Trial

Court Decision after Non-Jury Trial (CDAT)

Paternity - Summary Judgment

Summary Judgment (SMJG)

Paternity - Default/Uncontested

Consolidated Case (CONS)
Default Judgment (DFJG)
Uncontested Resolution (UNDS)

Paternity - Settlement/Dismissal

Settled by Arbitration (ARBA)
Closed by Court Order after a Hearing (CLCO)
Dismissal after Non-Jury Trial Commencement (DAT)
Dismissal (DSM)
Settled after Non-Jury Trial Commencement (SAT)
Settled by Partied/Agreed Judgment (STPR)

Paternity - Closure by Clerk

Dismissal/Closure by Clerk (DSCK)

Paternity - Others

Change of Venue (CHV)
Other Non-specified Resolutions

Percentile

Percent of cases resolved at a given age. For example, if resolved cases had a 98 percentile of 12 months, it means that 98% of the cases were resolved within the age of 12 months, or conversely 2% of the cases were resolved after 12 months, not counting suspense time.

Probate - Personal Representative Appointed

Non-Intervention Probate (NIP)
Personal Representative Appointed (PRGA)

Probate - Dismissal

Closed by Court Order after a Hearing (CLCO)
Dismissal (DSM)

Probate - Closure by Clerk

Dismissal/Closure by Clerk (DSCK)

Probate - Others

Change of Venue (CHV)
Consolidated Case (CONS)
Uncontested Resolution (UNDS)
Other Non-specified Resolutions

Backlogged Cases

Active pending cases with an age exceeding the court-adopted time standard for each specific case type (recommended by the State Advisory Committee, see definition for *Court Standard*).

Section III. Pending Caseload

Adjustment

Adjustment made because of vacating of resolutions, or change in suspense status between two reporting period.

End Pending

Total number of pending cases at the end of reporting period.

Previous Pending

Total number of pending cases at the beginning of reporting period.

Resolution Rate

Resolution rate is defined as the ratio of number of resolutions to number of new filings (i.e., number of resolutions divided by number of new filings) during the reporting period. The resolution rate measures the relative pace of resolution in relation to the pace of new filings. A resolution rate of greater than 1 indicates the number of resolutions exceeds the number of new filings.

On-review Status

Cases that have been resolved (post-resolution) but still need court resources for periodic review and other remaining outstanding issues.

Probate (EST), Paternity (PAT) and Dependency (DEP): Resolved and not completed (paternity or dependency established, but outstanding issues remain).

Guardianship (GDN,LGD,G/E): Resolved and on tracks of G1,G2,G3,GE or GD; Minor Settlement (MST): Resolved with a future hearing date.

Section IV. Age of Pending Cases

Case Age

The age of a case is the time (number of days) since the filing date, less any suspense time if applicable.

Median Age

The median age is the time that 50% of the cases are under and 50% are above the given age. For example, if pending cases have a median age of 12 months, it means that 50% of the pending cases are within the age of 12 months, and 50% of pending cases are over 12 months. The median age is more robust to cases with extreme age values than the average age.

Suspense Time

Time (days) that a case is on suspense status before its resolution. If a case has more than one suspense between filing and resolution, the suspense time is the total from all suspenses. Time on suspense status after resolution (e.g., appeals) is not counted.