

King County Superior Court
Quarterly Statistical Report

Fourth Quarter 2013

Department of Judicial Administration
Prepared by: Shiquan Liao, Ph.D., Statistician

Release Date: January 20, 2014

Report #: QTR-2013-4

Table 1. Year-to-Date Filing Activity

King County Superior Court

Reporting Category	Year-to-Date and Annual Filing Activity ⁽¹⁾					2012-2013 change (+ means "increase")		% of 2013 Total Filing ⁽²⁾
	2009	2010	2011	2012	2013	Cases	Percentage	
Total (incl. RALJ)								
Year-to-Date Filing	62148	59798	58337	54834	52755	-2079	-3.8%	
Annual Filing	62148	59798	58337	54834				
Criminal (excl. RALJ)								
Year-to-Date Filing	6498	6691	5986	5942	6045	+103	+1.7%	11.5%
Annual Filing	6498	6691	5986	5942				
General Civil (excl. Asbestos)								
Year-to-Date Filing	29789	27603	27499	24477	22347	-2130	-8.7%	42.4%
Annual Filing	29789	27603	27499	24477				
Asbestos Cases (civil) ⁽³⁾								
Year-to-Date Filing	32	29	43	36	63	+27	+75.0%	0.1%
Annual Filing	32	29	43	36				
Domestic								
Year-to-Date Filing	7673	7850	7865	7678	7897	+219	+2.9%	15.0%
Annual Filing	7673	7850	7865	7678				
Probate								
Year-to-Date Filing	5110	5203	5417	5492	5844	+362	+6.4%	11.1%
Annual Filing	5110	5203	5417	5492				
Guardianship								
Year-to-Date Filing	841	893	837	879	884	-15	-1.7%	1.7%
Annual Filing	841	893	837	879				
Adoption								
Year-to-Date Filing	685	686	688	511	483	-28	-5.5%	0.9%
Annual Filing	685	686	688	511				
Paternity								
Year-to-Date Filing	1233	1189	1039	1161	931	-230	-2.0%	1.8%
Annual Filing	1233	1189	1039	1161				
Mental Illness								
Year-to-Date Filing	2727	3059	3506	3591	3678	+87	+2.4%	7.0%
Annual Filing	2727	3059	3506	3591				
Juvenile DEP/TER								
Year-to-Date Filing	903	1038	1060	1050	1137	+87	+8.2%	2.2%
Annual Filing	903	1038	1060	1050				
Juvenile ARY/CHINS/OTHER								
Year-to-Date Filing	341	347	303	242	168	-74	-30.5%	0.3%
Annual Filing	341	347	303	242				
Juvenile Truancy								
Year-to-Date Filing	2083	1614	1350	1271	1236	-35	-2.8%	2.3%
Annual Filing	2083	1614	1350	1271				
Juvenile Offender								
Year-to-Date Filing	3967	3356	2496	2249	1808	-441	-19.6%	3.4%
Annual Filing	3967	3356	2496	2249				
Criminal RALJ								
Year-to-Date Filing	180	176	191	192	181	-11	-5.7%	0.3%
Annual Filing	180	176	191	192				
Civil RALJ								
Year-to-Date Filing	86	64	57	63	53	-10	-15.9%	0.1%
Annual Filing	86	64	57	63				
Matters Filed with Clerk ⁽⁴⁾								
Year-to-Date Filing	14662	15586	14799	15046	13763	-1283	-8.5%	
Annual Filing	14662	15586	14799	15046				

(1) New filings only (based on filing date), excluding re-opened cases (unable to count), and reflecting all documents received by 01/15/2014.

(2) New filings of each reporting category as percentage of "Year-to-Date Filing".

(3) "Matters Filed with Clerk" and "Additional Filings with Clerk" are not included in the "Total".

Chart 1-A. Quarterly Filing Activity
Total Judicial Cases Only ("Matters Filed with Clerk" excluded)

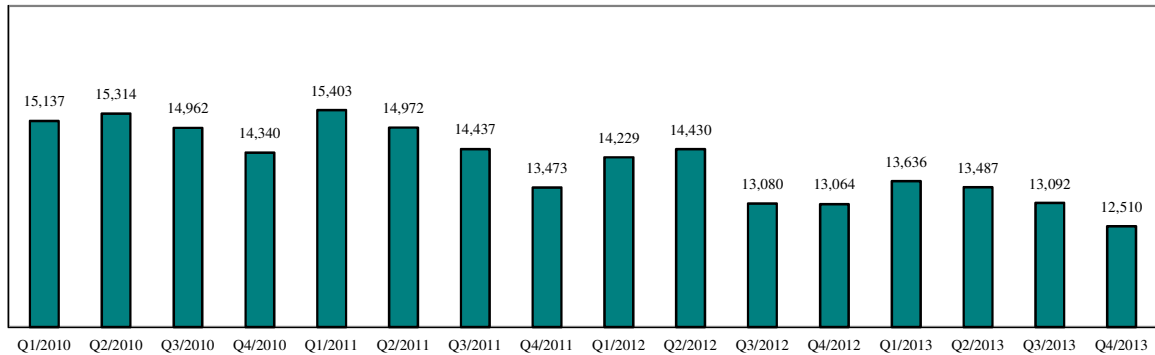
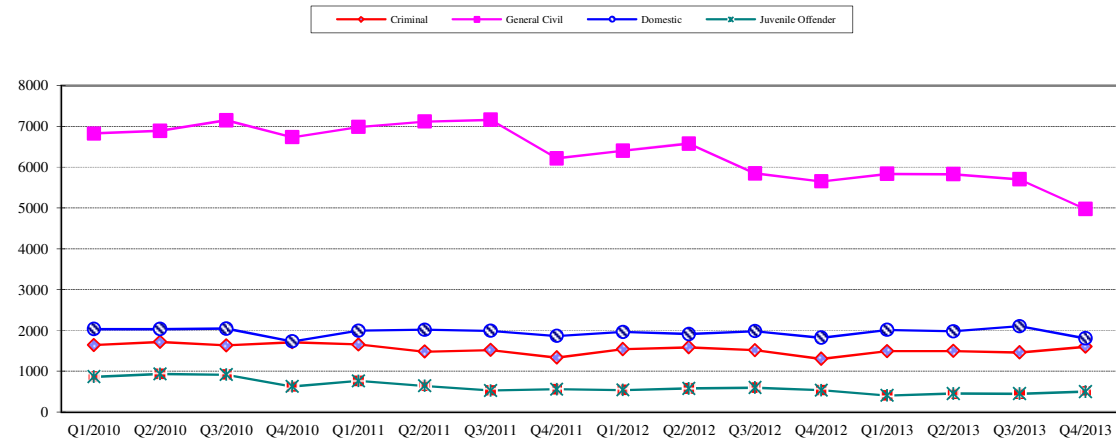


Chart 1-B. Quarterly Filings: Criminal, Domestic, General Civil and Juvenile Offender Cases Only



* Note: "General Civil" is specifically defined in this report. The category of "General Civil" does **not** include the following case types: domestic, probate, guardianship, adoption, paternity, mental illness, juvenile cases (dependency, at-risk youth, child-in-need of service, civil RALJ, and tax filings that don't require judicial resources ("matters filed with clerk")). Please check the Appendix for the cause codes in the "General Civil" category.

Table 1-A. Post-Resolution Modifications (Domestic and Paternity Cases)

Based on Tracks Opened After Original Resolution Date

		2011Q1			2011Q2			2011Q3			2011Q4			Year 2011		
Location	Case Type	DMOD	DTBA	Total	DMOD	DTBA	Total	DMOD	DTBA	Total	DMOD	DTBA	Total	DMOD	DTBA	Total
KNT	Domestic	151	65	216	165	76	241	135	54	189	150	67	217	601	262	863
	Paternity	22	6	28	23	10	33	20	3	23	18	3	21	83	22	105
KNT Total		173	71	244	188	86	274	155	57	212	168	70	238	684	284	968
SEA	Domestic	118	75	193	151	106	257	143	75	218	155	76	231	567	332	899
	Paternity	19	19	38	17	23	40	19	30	49	7	17	24	62	89	151
SEA Total		137	94	231	168	129	297	162	105	267	162	93	255	629	421	1050
KNT/SEA Total		310	165	475	356	215	571	317	162	479	330	163	493	1313	705	2018
		2012Q1			2012Q2			2012Q3			2012Q4			Year 2012		
Location	Case Type	DMOD	DTBA	Total	DMOD	DTBA	Total	DMOD	DTBA	Total	DMOD	DTBA	Total	DMOD	DTBA	Total
KNT	Domestic	183	55	238	153	56	209	150	61	211	159	38	197	645	210	855
	Paternity	15	4	19	14	8	22	16	4	20	13	6	19	58	22	80
KNT Total		198	59	257	167	64	231	166	65	231	172	44	216	703	232	935
SEA	Domestic	153	68	221	156	84	240	192	71	263	149	68	217	650	291	941
	Paternity	6	18	24	13	22	35	16	10	26	4	7	11	39	57	96
SEA Total		159	86	245	169	106	275	208	81	289	153	75	228	689	348	1037
KNT/SEA Total		357	145	502	336	170	506	374	146	520	325	119	444	1392	580	1972
		2013Q1			2013Q2			2013Q3			2013Q4			Year 2013		
Location	Case Type	DMOD	DTBA	Total	DMOD	DTBA	Total	DMOD	DTBA	Total	DMOD	DTBA	Total	DMOD	DTBA	Total
KNT	Domestic	160	47	207	149	59	208	179	45	224	152	53	205	640	204	844
	Paternity	17	7	24	13	11	24	14	3	17	11	7	18	55	28	83
KNT Total		177	54	231	162	70	232	193	48	241	163	60	223	695	232	927
SEA	Domestic	132	67	199	169	102	271	185	74	259	152	70	222	638	313	951
	Paternity	6	9	15	16	11	27	18	6	24	13	5	18	53	31	84
SEA Total		138	76	214	185	113	298	203	80	283	165	75	240	691	344	1035
KNT/SEA Total		315	130	445	347	183	530	396	128	524	328	135	463	1386	576	1962

* DMOD = parenting plan modification track; DTBA = support modification track.

Table 2. Number of Cases Resolved and Resolution Category (%)

King County Superior Court

Reporting Category	Q1/12	Q2/12	Q3/12	Q4/12	Q1/13	Q2/13	Q3/13	Q4/13*
Total Resolutions (excl. "Matters Filed with Clerk")	13683	15255	13962	13730	14048	14104	13836	13052
Criminal (excl. RALJ): # Resolved	1309	1477	1365	1423	1539	1388	1524	1364
Resolved by Jury Trial	5.0%	3.5%	3.0%	3.1%	3.8%	4.3%	3.3%	3.7%
Resolved by Non-Jury Trial	1.0%	0.6%	0.7%	1.1%	1.5%	1.2%	1.8%	1.2%
Resolved by Guilty Plea	78.2%	80.0%	79.9%	82.3%	78.8%	79.7%	79.9%	78.5%
Dismissal	15.4%	15.8%	16.0%	13.2%	15.4%	14.7%	14.8%	16.3%
Others	0.3%	0.1%	0.4%	0.4%	0.5%	0.1%	0.3%	0.3%
General Civil: # Resolved	6502	7295	6473	6274	6503	6402	6054	5478
Resolved by Jury Trial	0.5%	0.6%	0.5%	0.4%	0.5%	0.6%	0.6%	0.5%
Resolved by Non-Jury Trial	0.4%	0.3%	0.4%	0.4%	0.5%	0.4%	0.3%	0.4%
Summary Judgment	2.3%	2.3%	1.9%	1.8%	1.7%	1.8%	1.7%	1.9%
Default/ Uncontested	42.5%	44.5%	40.5%	41.5%	41.3%	41.9%	39.9%	36.6%
Arbitration	2.3%	2.1%	2.1%	2.6%	2.6%	2.4%	2.7%	2.6%
Settlement/Dismissal	48.7%	46.6%	50.9%	50.0%	49.8%	49.3%	51.3%	54.5%
Closure by Clerk	2.3%	2.9%	3.0%	2.2%	2.9%	2.5%	2.3%	2.5%
Others	1.0%	0.9%	0.8%	1.1%	0.9%	1.1%	1.2%	1.1%
Asbestos Cases (civil): # Resolved	12	11	36	31	15	20	9	4
Resolved by Jury Trial	0.0%	0.0%	0.0%	0.0%	6.7%	5.0%	0.0%	0.0%
Resolved by Non-Jury Trial	0.0%	0.0%	0.0%	0.0%	0.0%	0.0%	0.0%	0.0%
Summary Judgment	0.0%	0.0%	0.0%	0.0%	0.0%	5.0%	0.0%	0.0%
Default/ Uncontested	25.0%	0.0%	2.8%	0.0%	6.7%	5.0%	22.2%	0.0%
Arbitration	0.0%	0.0%	0.0%	0.0%	0.0%	0.0%	0.0%	0.0%
Settlement/Dismissal	75.0%	100%	16.7%	100%	53.3%	60.0%	77.8%	100%
Closure by Clerk	0.0%	0.0%	80.6%	0.0%	33.3%	20.0%	0.0%	0.0%
Others	0.0%	0.0%	0.0%	0.0%	0.0%	5.0%	0.0%	0.0%
Domestic: # Resolved	1838	1947	1929	2081	1928	1965	2055	2023
Resolved by Trial	4.2%	4.3%	4.2%	4.9%	4.5%	4.5%	3.8%	4.0%
Default/ Uncontested	8.6%	7.7%	9.5%	10.0%	9.1%	8.3%	11.1%	8.7%
Settlement /Dismissal	85.6%	86.4%	84.8%	84.5%	84.9%	86.3%	84.7%	86.4%
Closure by Clerk	1.0%	1.3%	1.1%	0.5%	1.2%	0.5%	0.3%	0.4%
Others	0.7%	0.3%	0.4%	0.0%	0.4%	0.4%	0.1%	0.6%
Probate: # Resolved	1355	1438	1266	1336	1547	1580	1319	1333
Personal Rep. Appointed	72.3%	72.3%	70.5%	72.8%	72.9%	66.3%	70.7%	74.6%
Dismissal	2.2%	2.5%	2.0%	2.0%	1.8%	5.0%	2.4%	1.5%
Closure by Clerk	0.0%	0.1%	0.0%	0.0%	0.0%	3.5%	0.0%	0.0%
Others	25.5%	25.0%	27.6%	25.3%	25.4%	25.2%	27.0%	23.9%
Guardianship: # Resolved	180	246	222	219	176	212	232	218
Guardian Appointed	52.2%	51.6%	62.2%	58.0%	50.0%	49.1%	54.7%	52.3%
Dismissal	46.7%	48.0%	36.9%	42.0%	50.0%	50.0%	44.8%	47.7%
Closure by Clerk	0.0%	0.0%	0.0%	0.0%	0.0%	0.0%	0.0%	0.0%
Others	1.1%	0.4%	0.9%	0.0%	0.0%	0.9%	0.4%	0.0%
Adoption: # Resolved	83	118	113	190	95	123	146	155
Resolved by Trial	0.0%	0.9%	0.0%	0.0%	0.0%	0.8%	0.7%	0.0%
Uncontested	9.6%	0.9%	3.5%	0.0%	9.5%	1.6%	3.4%	0.7%
Settlement /Dismissal	90.4%	96.6%	96.5%	100%	90.5%	95.9%	95.2%	98.7%
Closure by Clerk	0.0%	1.7%	0.0%	0.0%	0.0%	1.6%	0.0%	0.0%
Others	0.0%	0.0%	0.0%	0.0%	0.0%	0.0%	0.7%	0.7%
Paternity: # Resolved	257	285	275	230	265	247	242	234
Resolved by Trial	0.4%	0.0%	0.7%	0.4%	0.4%	0.8%	0.8%	1.7%
Summary Judgment	36.6%	34.7%	40.4%	49.1%	48.3%	51.4%	42.2%	49.2%
Default/ Uncontested	28.0%	29.8%	25.1%	25.2%	22.6%	23.5%	33.1%	23.9%
Settlement/Dismissal	34.6%	34.7%	33.8%	25.2%	28.7%	23.9%	24.0%	25.2%
Closure by Clerk	0.4%	0.7%	0.0%	0.0%	0.0%	0.4%	0.0%	0.0%
Others	0.0%	0.0%	0.0%	0.0%	0.0%	0.0%	0.0%	0.0%

Reflecting all documents received by 01/15/2014.

Table 2 (cont.). Number of Cases Resolved and Resolution Category (%)

King County Superior Court

Reporting Category	Q1/12	Q2/12	Q3/12	Q4/12	Q1/13	Q2/13	Q3/13	Q4/13*
Mental Illness: # Resolved	865	1078	996	844	754	893	1113	1125
Court Decision to Commit	74.2%	57.7%	62.0%	68.3%	70.9%	70.1%	55.0%	55.2%
Closed by Court	0.0%	0.0%	0.0%	0.0%	0.0%	0.0%	0.0%	0.0%
Dismissal	15.4%	12.8%	18.8%	24.5%	22.2%	21.3%	21.5%	20.5%
Others	10.4%	29.5%	19.3%	7.2%	7.0%	8.6%	23.5%	24.3%
Juv. DEP/TER: # Resolved	228	259	273	282	294	411	251	231
Finding of Dependency	70.2%	69.9%	62.3%	68.4%	69.7%	76.6%	74.5%	65.4%
Dismissal	28.5%	29.7%	37.7%	30.5%	29.9%	21.2%	23.5%	32.9%
Others	1.3%	0.4%	0.0%	1.1%	0.3%	2.2%	2.0%	1.7%
Juv. ARY/CHINS/OTHER:# Resolved	67	77	56	42	62	69	45	50
Approve of Petition	56.7%	32.5%	51.8%	50.0%	45.2%	60.9%	60.0%	56.0%
Dismissal	43.3%	66.2%	48.2%	50.0%	54.8%	37.7%	37.8%	42.0%
Others	0.0%	1.3%	0.0%	0.0%	0.0%	1.5%	2.2%	2.0%
Juvenile Truancy: # Resolved	282	347	328	192	302	226	296	336
Approve of Petition	21.3%	15.9%	0.0%	18.8%	36.4%	40.3%	0.3%	13.4%
Dismissal	78.4%	83.9%	100%	81.3%	63.6%	59.7%	99.7%	86.6%
Others	0.4%	0.3%	0.0%	0.0%	0.0%	0.0%	0.0%	0.0%
Juvenile Offender: # Resolved	651	619	561	522	511	501	491	441
Resolved by Trial (Fact Finding)	7.8%	5.3%	3.9%	6.3%	12.0%	11.2%	6.1%	7.5%
Resolved by Guilty Plea	40.6%	42.8%	42.1%	40.8%	40.9%	36.7%	35.2%	39.5%
Dismissal	36.9%	31.7%	35.8%	37.9%	27.2%	28.5%	41.6%	32.4%
Deferred Disposition (DDSP)	11.7%	17.1%	15.3%	12.8%	16.6%	16.6%	14.3%	16.1%
Others (including Deferred Prosecution)	3.1%	3.1%	3.9%	2.1%	3.3%	7.0%	0.0%	4.5%
Criminal RALJ: # Resolved	46	46	46	51	38	45	46	54
RALJ Decision	73.9%	76.1%	56.5%	51.0%	60.5%	66.7%	58.7%	63.0%
Dismissal	26.1%	21.7%	34.8%	29.4%	34.2%	31.1%	39.1%	33.3%
Others	0.0%	2.2%	8.7%	19.6%	5.3%	2.2%	2.2%	3.7%
Civil RALJ: # Resolved	8	12	23	17	19	22	13	6
RALJ Decision	62.5%	41.7%	52.2%	30.8%	15.8%	50.0%	61.5%	50.0%
Dismissal	25.0%	50.0%	34.8%	69.2%	84.2%	50.0%	38.5%	50.0%
Others	12.5%	8.3%	13.0%	0.0%	0.0%	0.0%	0.0%	0.0%

* Reflecting all documents received by 01/15/2014.

Chart 2-A. Quarterly Resolutions
Total Judicial Cases Only ("Matters Filed with Clerk" excluded)

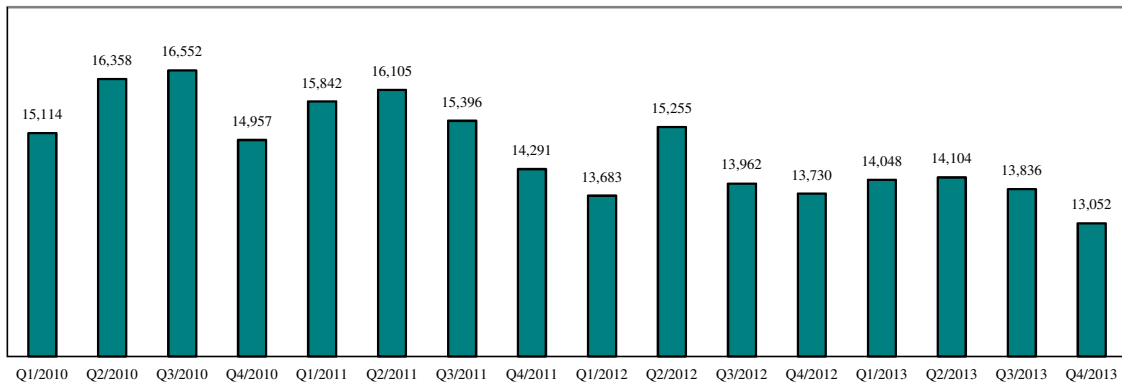
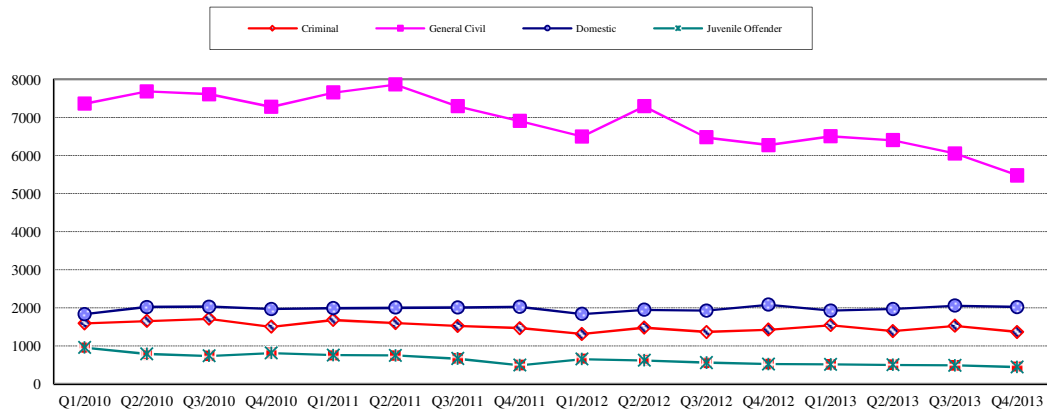


Chart 2-B. Quarterly Resolutions: Criminal, Dmestic, General Civil and Juvenile Offender Cases Only



* Note: "General Civil" is specifically defined in this report. The category of "General Civil" does **not** include the following case types: domestic, probate, guardianship, adoption, paternity, mental illness, juvenile cases (dependency, at-risk youth, child-in-need of service), civil RALJ, and tax filings that don't require judicial resources ("matters filed with clerk"). Please check the Appendix for the cause codes in the "General Civil" category.

Table 3. Age of Resolved Cases
King County Superior Court

Reporting Category	Age of Cases at Resolution							
	Q1/12	Q2/12	Q3/12	Q4/12	Q1/13	Q2/13	Q3/13	Q4/13*
Criminal (excl. RALJ)								
Age (days)								
50% Cases Resolved by Day	109	98	106	112	120	110	116	117
90% Cases Resolved by Day	380	370	373	309	346	398	371	359
98% Cases Resolved by Day	752	734	697	736	737	821	655	657
Comparison with Court Standard of								
90% in 4 months	55%	58%	56%	54%	50%	54%	52%	51%
98% in 6 months	69%	73%	72%	73%	69%	69%	69%	69%
100% in 9 months	83%	84%	85%	87%	84%	82%	84%	84%
General Civil ⁽¹⁾								
Age (days)								
50% Cases Resolved by Day	28	26	27	29	28	27	29	38
90% Cases Resolved by Day	481	498	514	504	512	515	496	484
98% Cases Resolved by Day	674	712	728	735	706	784	717	736
Comparison with Court Standard of								
90% in 12 months	85%	85%	84%	83%	80%	83%	83%	83%
98% in 18 months	91%	93%	92%	92%	92%	92%	93%	93%
100% in 24 months	99%	98%	97%	98%	98%	97%	97%	97%
Domestic								
Age (days)								
50% Cases Resolved by Day	172	175	169	170	181	164	150	155
90% Cases Resolved by Day	395	378	385	391	387	380	371	379
98% Cases Resolved by Day	657	581	589	643	596	617	553	609
Comparison with Court Standard of								
90% in 8 months	65%	64%	64%	64%	63%	66%	67%	66%
98% in 10 months	73%	73%	72%	73%	71%	75%	84%	75%
100% in 14 months	92%	92%	93%	97%	92%	92%	94%	94%
Probate								
Age (days)								
50% Cases Resolved by Day	0	0	0	0	0	0	0	0
90% Cases Resolved by Day	4	6	9	4	4	311	7	6
98% Cases Resolved by Day	87	125	151	151	78	2262	169	62
Comparison with Court Standard of								
90% in 8 months	99%	98%	99%	98%	98%	89%	98%	99%
98% in 18 months	99%	99%	100%	99%	100%	91%	100%	100%
100% in 36 months	100%	100%	100%	99%	100%	94%	100%	100%
Guardianship								
Age (days)								
50% Cases Resolved by Day	75	57	65	57	61	59	63	63
90% Cases Resolved by Day	213	207	158	166	259	342	247	172
98% Cases Resolved by Day	521	601	555	614	602	622	684	451
Comparison with Court Standard of								
90% in 8 months	92%	92%	90%	93%	90%	87%	90%	91%
98% in 18 months	98%	97%	97%	98%	94%	97%	97%	100%
100% in 36 months	100%	99%	99%	100%	99%	99%	98%	100%
Adoption								
Age (days)								
50% Cases Resolved by Day	75	89	81	52	93	108	65	49
90% Cases Resolved by Day	178	270	253	206	700	863	591	215
98% Cases Resolved by Day	362	896	511	910	1026	1465	1473	549
Comparison with Court Standard of								
90% in 8 months	95%	64%	88%	92%	69%	74%	74%	92%
98% in 10 months	95%	71%	93%	93%	75%	76%	75%	95%
100% in 14 months	100%	98%	97%	94%	81%	77%	78%	95%
Paternity								
Age (days)								
50% Cases Resolved by Day	134	111	152	155	173	180	165	181
90% Cases Resolved by Day	245	285	271	272	273	296	271	300
98% Cases Resolved by Day	470	418	407	435	353	424	429	429
Comparison with Court Standard of								
90% in 8 months	89%	87%	82%	84%	80%	79%	63%	74%
98% in 10 months	93%	93%	93%	93%	93%	91%	76%	91%
100% in 14 months	96%	98%	99%	98%	100%	98%	98%	97%

Table 3 (cont.) Age of Resolved Cases

King County Superior Court

Reporting Category	Age of Cases at Resolution							
	Q1/12	Q2/12	Q3/12	Q4/12	Q1/13	Q2/13	Q3/13	Q4/13*
Mental Illness**								
Age (days)								
50% Cases Resolved by Day	3	4	3	3	2	3	4	4
90% Cases Resolved by Day	10	1553	182	10	9	9	333	287
98% Cases Resolved by Day	81	2397	417	820	21	23	438	1457
Juvenile DEP/TER								
Age (days)								
50% Cases Resolved by Day	107	98	94	104	93	188	84	101
90% Cases Resolved by Day	328	391	432	839	487	821	218	296
98% Cases Resolved by Day	889	763	993	1014	1483	1274	804	901
Comparison with Court Standard of								
90% in 8 months	85%	84%	80%	81%	77%	56%	93%	89%
98% in 10 months	88%	88%	83%	84%	83%	59%	94%	92%
100% in 14 months	92%	90%	90%	86%	88%	72%	95%	94%
Juv ARY/CHINS/OTHER								
Age (days)								
50% Cases Resolved by Day	27	28	44	73	55	41	39	44
90% Cases Resolved by Day	111	232	245	282	238	692	235	112
98% Cases Resolved by Day	199	329	293	1637	343	3122	2257	1104
Comparison with Court Standard of								
90% in 8 months	98%	82%	88%	85%	90%	82%	91%	94%
98% in 10 months	99%	94%	99%	89%	93%	85%	91%	94%
100% in 14 months	100%	99%	100%	95%	98%	87%	96%	98%
Juvenile Truancy**								
Age (days)								
50% Cases Resolved by Day	22	22	68	27	32	22	25	67
90% Cases Resolved by Day	77	65	158	198	85	60	100	177
98% Cases Resolved by Day	228	128	442	324	295	347	267	549
Juvenile Offender								
Age (days)								
50% Cases Resolved by Day	75	64	69	73	83	73	78	77
90% Cases Resolved by Day	228	173	175	258	221	243	223	217
98% Cases Resolved by Day	565	648	768	935	787	852	357	362
Comparison with Court Standard of								
90% in 4 months	74%	82%	78%	75%	69%	70%	69%	71%
98% in 6 months	86%	90%	85%	86%	85%	81%	84%	83%
100% in 9 months	92%	94%	95%	93%	94%	91%	93%	94%
Criminal RALJ								
Age (days)								
50% Cases Resolved by Day	244	267	258	254	258	283	275	286
90% Cases Resolved by Day	347	428	603	382	413	433	447	467
98% Cases Resolved by Day	373	689	953	517	477	654	665	658
Civil RALJ								
Age (days)								
50% Cases Resolved by Day	170	179	234	202	171	266	165	176
90% Cases Resolved by Day	225	364	1018	1030	704	373	400	199
98% Cases Resolved by Day	225	405	3542	1859	984	411	454	199

* Reflecting all documents received by 01/15/2014.

** No standard yet.

Table 4. Active Pending Caseload Statistics
King County Superior Court

Reporting Category	Q1/12	Q2/12	Q3/12	Q4/12	Q1/13	Q2/13	Q3/13	Q4/13*
Total (incl. RALJ)								
Previous Pending (+)	19797	20235	20098	19729	19396	19221	19064	18930
New Filing (+)	14229	14430	13080	13064	13636	13487	13092	12510
Resolved (-)	13683	15255	13962	13730	14048	14104	13836	13052
End Pending	20235	20098	19729	19396	19221	19064	18930	18794
Resolution Rate**	0.962	1.057	1.067	1.051	1.030	1.048	1.057	1.043
Criminal (excl. RALJ)								
Previous Pending (+)	2549	2715	2798	2860	2780	2673	2828	2752
New Filing (+)	1538	1585	1513	1305	1490	1495	1460	1599
Resolved (-)	1309	1477	1365	1423	1539	1388	1524	1364
End Pending	2715	2798	2860	2780	2673	2828	2752	2865
Resolution Rate**	0.851	0.932	0.902	1.090	1.033	0.928	1.044	0.853
General Civil								
Previous Pending (+)	9153	9243	8912	8611	8431	8112	7914	8003
New Filing (+)	6400	6576	5844	5650	5834	5827	5701	4974
Resolved (-)	6502	7295	6473	6274	6503	6402	6054	5478
End Pending	9243	8912	8611	8431	8112	7914	8005	7844
Resolution Rate**	1.016	1.109	1.108	1.110	1.115	1.099	1.062	1.101
Asbestos Cases (civil) ⁽¹⁾								
Previous Pending (+)	85	81	81	71	76	81	80	81
New Filing (+)	7	9	8	7	19	18	10	14
Resolved (-)	12	11	36	31	15	20	9	4
End Pending	81	81	71	76	81	80	81	92
Resolution Rate**	1.714	1.212	4.500	4.429	0.789	1.111	0.900	0.286
Domestic								
Previous Pending (+)	4421	4556	4544	4637	4458	4562	4580	4650
New Filing (+)	1961	1913	1982	1818	2011	1979	2103	1803
Resolved (-)	1838	1947	1929	2081	1928	1965	2055	2023
End Pending	4556	4544	4637	4458	4562	4580	4650	4486
Resolution Rate**	0.937	1.018	0.973	1.145	0.959	0.998	0.977	1.122
Probate								
Previous Pending (+)	559	579	631	655	615	696	588	650
New Filing (+)	1405	1453	1262	1365	1606	1444	1352	1429
Resolved (-)	1355	1438	1266	1336	1547	1580	1319	1333
End Pending	579	631	655	615	696	588	650	768
Resolution Rate**	0.964	0.990	1.003	0.979	0.963	1.094	0.976	0.933
Guardianship								
Previous Pending (+)	261	276	277	274	248	279	302	310
New Filing (+)	204	247	216	215	210	234	237	209
Resolved (-)	180	246	222	219	176	212	232	218
End Pending	276	277	274	248	279	302	310	303
Resolution Rate**	0.882	0.996	1.028	1.019	0.838	0.906	0.979	1.043
Adoption								
Previous Pending (+)	192	226	230	240	199	222	200	187
New Filing (+)	119	122	120	149	115	101	133	134
Resolved (-)	83	118	113	190	95	123	146	155
End Pending	226	230	240	199	222	200	187	166
Resolution Rate**	0.697	0.967	0.942	1.275	0.826	1.218	1.098	1.157
Paternity								
Previous Pending (+)	377	456	468	448	500	479	506	500
New Filing (+)	334	299	255	273	246	273	235	177
Resolved (-)	257	285	275	230	265	247	242	234
End Pending	456	468	448	500	479	506	500	446
Resolution Rate**	0.769	0.953	1.078	0.842	1.077	0.905	1.030	1.322

* Reflecting all documents received by 01/15/2014.

** A value of "Resolution Rate" less than one indicates the resolution pace is slower than the filing pace.

Table 4 (cont.) Active Pending Caseload Statistics
King County Superior Court

Reporting Category	Q1/12	Q2/12	Q3/12	Q4/12	Q1/13	Q2/13	Q3/13	Q4/13*
Mental Illness								
Previous Pending (+)	530	540	350	281	311	378	390	294
New Filing (+)	888	883	926	894	820	904	1019	935
Resolved (-)	865	1078	996	844	754	893	1113	1125
End Pending	540	350	281	311	378	390	294	104
Resolution Rate**	0.974	1.221	1.076	0.944	0.920	0.988	1.092	1.203
Juvenile DEP/TER								
Previous Pending (+)	522	503	534	523	516	492	419	447
New Filing (+)	255	271	235	289	246	302	273	282
Resolved (-)	228	259	273	282	294	411	251	231
End Pending	503	534	523	516	492	419	447	507
Resolution Rate**	0.894	0.956	1.162	0.976	1.195	1.361	0.920	0.819
Juv ARY/CHINS/OTHER								
Previous Pending (+)	94	91	98	89	104	101	75	86
New Filing (+)	70	77	43	52	55	37	51	58
Resolved (-)	67	77	56	42	62	69	45	50
End Pending	91	98	89	104	101	75	86	94
Resolution Rate**	0.957	1.000	1.302	0.808	1.127	1.865	0.880	0.862
Juvenile Truancy								
Previous Pending (+)	165	145	364	208	308	382	467	210
New Filing (+)	451	355	19	446	533	361	10	331
Resolved (-)	282	347	328	192	302	226	296	336
End Pending	145	364	208	308	382	467	210	326
Resolution Rate**	0.625	0.977	17.263	0.430	0.567	0.626	29.600	1.015
Juvenile Offender								
Previous Pending (+)	723	653	631	655	663	588	546	587
New Filing (+)	538	576	595	532	405	452	449	497
Resolved (-)	651	619	561	522	511	501	491	441
End Pending	653	631	655	663	588	546	587	612
Resolution Rate**	1.210	1.075	0.943	0.981	1.262	1.108	1.094	0.887
Criminal RALJ								
Previous Pending (+)	132	132	136	134	142	144	147	147
New Filing (+)	47	47	43	55	40	48	44	48
Resolved (-)	46	46	46	51	38	45	46	54
End Pending	132	136	134	142	144	147	147	143
Resolution Rate**	0.979	0.979	1.070	0.927	0.950	0.938	1.045	1.125
Civil RALJ								
Previous Pending (+)	34	39	44	43	45	32	22	24
New Filing (+)	12	17	19	14	6	12	15	20
Resolved (-)	8	12	23	13	19	22	13	6
End Pending	39	44	43	45	32	22	24	38
Resolution Rate**	0.667	0.706	1.211	0.929	3.167	1.833	0.867	0.300

* Reflecting all documents received by 01/15/2014.

** A value of "Resolution Rate" less than one indicates the resolution pace is slower than the filing pace.

Chart 4-A. Active Pending Caseload at Quarter End
Total Judicial Cases Only ("Matters Filed with Clerk" excluded)

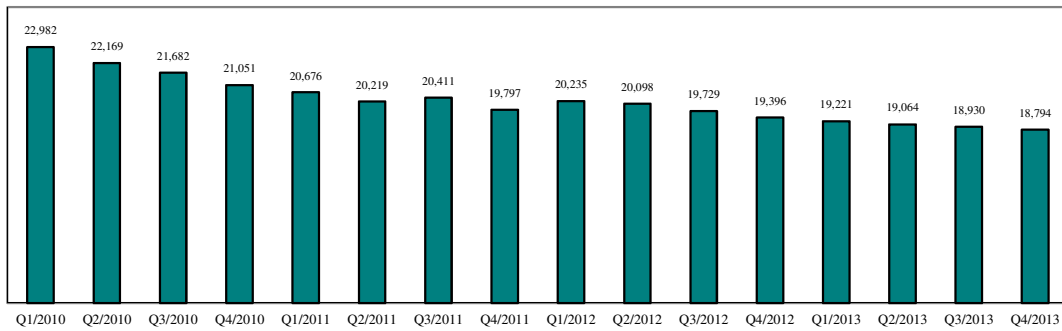


Chart 4-B. Active Pending Caseload at Quarter End: Domestic and General Civil Cases Only

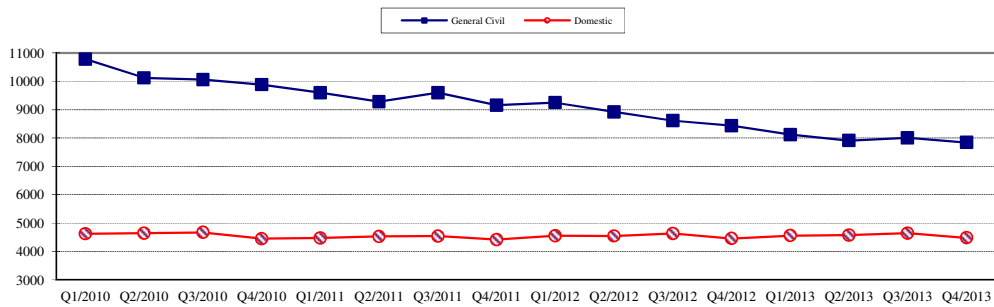
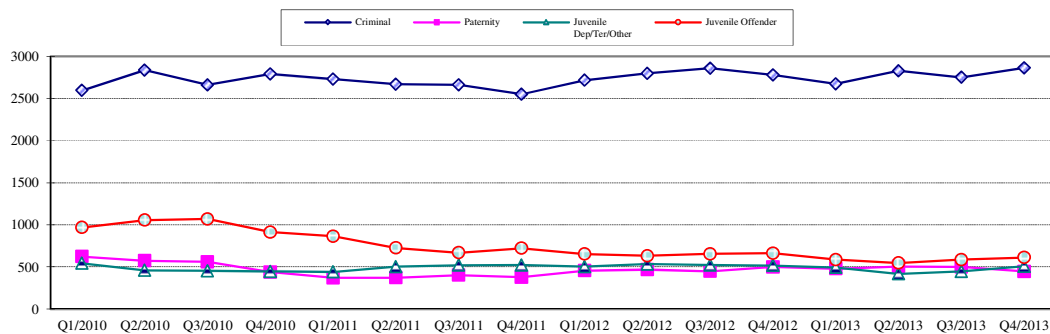


Chart 4-C. Active Pending Caseload at Quarter End:
Criminal, Juvenile Offender, Paternity and Dependency Cases Only



* Note: "General Civil" is specifically defined in this report. The category of "General Civil" does **not** include the following case types: domestic, probate, guardianship, adoption, paternity, mental illness, juvenile cases (dependency, at-risk youth, child-in-need of service), civil RALJ, and tax filings that don't require judicial resources ("matters filed with clerk"). Please check the Appendix for the cause codes in the "General Civil" category.

Table 5. Age of Pending Cases

King County Superior Court

Reporting Category	Age of Pending Cases and # of Cases in Each Age Interval							
	Q1/12	Q2/12	Q3/12	Q4/12	Q1/13	Q2/13	Q3/13	Q4/13*
Criminal (excl. RALJ): # of Cases	2715	2798	2860	2780	2673	2828	2752	2865
Age (days)								
Median (50 percentile)	103	104	110	126	116	111	117	111
95 percentile	648	691	692	706	695	703	745	771
# of Cases in Age Interval								
0 - 60 days (0 - 2 months)	980	928	844	760	833	889	861	867
61 - 120 days (3 - 4 months)	487	619	676	590	546	599	568	650
121 - 180 days (5 - 6 months)	348	362	405	422	315	382	373	366
181 - 270 days (7 - 9 months)	288	269	330	363	324	296	346	333
> 270 days (> 9 months)	612	620	605	645	655	662	604	649
General Civil: # of Cases	9243	8912	8611	8431	8112	7914	8005	7844
Age (days)								
Median (50 percentile)	173	172	188	189	179	168	165	174
95 percentile	597	594	601	641	637	633	634	658
# of Cases in Age Interval								
0 - 120 days (0 - 4 months)	3671	3538	3148	3108	3112	3212	3230	3018
121 - 240 days (5 - 8 months)	1903	1846	2020	1804	1710	1606	1829	1796
241 - 360 days (9 - 12 months)	1513	1366	1327	1332	1238	1216	1151	1250
361 - 540 days (13 - 18 months)	1479	1524	1473	1410	1333	1235	1138	1083
541 - 720 days (19 - 24 months)	468	422	405	487	419	373	357	378
> 720 days (> 24 months)	209	216	238	290	300	272	300	319
Asbestos Cases (civil)⁽¹⁾ : # of Cases	81	81	71	76	81	80	81	92
Age (days)								
Median (50 percentile)	522	563	410	524	388	280	264	296
95 percentile	1893	1984	1747	3168	3244	3342	2441	2533
# of Cases in Age Interval								
0 - 120 days (0 - 4 months)	7	12	11	7	20	26	17	18
121 - 240 days (5 - 8 months)	8	5	14	10	10	10	21	13
241 - 360 days (9 - 12 months)	16	12	8	11	8	12	9	23
361 - 540 days (13 - 18 months)	11	11	11	11	11	11	13	14
541 - 720 days (19 - 24 months)	9	7	6	7	6	2	5	8
> 720 days (> 24 months)	30	34	21	30	26	19	16	16
Domestic: # of Cases	4556	4544	4637	4458	4562	4580	4650	4486
Age (days)								
Median (50 percentile)	122	118	122	125	117	116	112	127
95 percentile	491	475	516	528	502	508	517	527
# of Cases in Age Interval								
0 - 120 days (0 - 4 months)	2258	2275	2313	2158	2327	2361	2443	2181
121 - 240 days (5 - 8 months)	1244	1193	1274	1185	1218	1128	1207	1214
241 - 360 days (9 - 12 months)	653	648	605	675	589	688	568	644
361 - 540 days (13 - 18 months)	211	236	239	227	221	198	215	229
> 540 days (> 18 months)	190	192	206	213	207	205	217	218
Probate: # of Cases	579	631	655	615	696	588	650	768
Age (days)								
Median (50 percentile)	663	608	605	697	559	403	415	382
95 percentile	2175	2218	2243	2335	2371	1970	2021	2063
# of Cases in Age Interval								
0 - 120 days (0 - 4 months)	119	122	93	109	144	133	142	192
121 - 240 days (5 - 8 months)	74	70	85	67	74	92	84	93
241 - 360 days (9 - 12 months)	38	65	68	59	64	52	74	83
361 - 540 days (13 - 18 months)	32	51	64	47	60	70	81	89
> 540 days (> 18 months)	316	323	345	333	354	241	269	311

Reflecting all documents received by 01/15/2014.

Table 5 (cont.). Age of Pending Cases

King County Superior Court

Reporting Category	Age of Pending Cases and # of Cases in Each Age Interval							
	Q1/12	Q2/12	Q3/12	Q4/12	Q1/13	Q2/13	Q3/13	Q4/13*
Guardianship: # of Cases	276	277	274	248	279	302	310	303
Age (days)								
Median (50 percentile)	60	62	73	69	73	65	76	103
95 percentile	550	538	605	543	560	474	489	575
# of Cases in Age Interval								
0 - 120 days (0 - 4 months)	173	186	169	157	172	199	190	166
121 - 240 days (5 - 8 months)	48	25	37	36	49	41	50	52
241 - 360 days (9 - 12 months)	21	31	22	21	24	30	37	35
361 - 540 days (13 - 18 months)	20	22	28	21	19	18	21	31
> 540 days (> 18 months)	14	13	18	13	15	14	12	19
Adoption: # of Cases	226	230	240	199	222	200	187	166
Age (days)								
Median (50 percentile)	150	145	172	271	216	151	137	155
95 percentile	1431	1220	1282	1706	1393	1467	1383	1629
# of Cases in Age Interval								
0 - 120 days (0 - 4 months)	102	107	90	55	88	90	89	72
121 - 240 days (5 - 8 months)	41	35	51	34	30	23	36	23
241 - 360 days (9 - 12 months)	19	18	21	28	24	19	14	20
361 - 540 days (13 - 18 months)	22	25	20	21	27	28	19	19
> 540 days (> 18 months)	42	45	58	61	53	40	29	32
Paternity: # of Cases	456	468	448	500	479	506	500	446
Age (days)								
Median (50 percentile)	59	85	95	92	102	87	106	119
95 percentile	264	263	235	251	294	279	305	279
# of Cases in Age Interval								
0 - 120 days (0 - 4 months)	318	320	291	303	262	327	309	230
121 - 240 days (5 - 8 months)	106	116	138	165	176	135	147	179
241 - 360 days (9 - 12 months)	25	25	12	25	32	35	30	24
361 - 540 days (13 - 18 months)	6	5	6	5	8	7	12	11
> 540 days (> 18 months)	1	2	1	2	1	2	2	2
Mental Illness: # of Cases	540	350	281	311	378	390	294	104
Age (days)								
Median (50 percentile)	962	186	97	104	172	256	259	197
95 percentile	2337	1334	1512	1595	1595	1680	1877	2196
# of Cases in Age Interval								
0 - 120 days (0 - 4 months)	95	150	163	181	137	79	94	47
121 - 240 days (5 - 8 months)	49	42	27	93	134	95	37	12
> 240 days (> 8 months)	396	158	91	37	107	216	163	45
Juv DEP/TER: # of Cases	503	534	523	516	492	419	447	507
Age (days)								
Median (50 percentile)	110	108	150	113	135	66	77	98
95 percentile	788	878	949	1026	1116	558	610	597
# of Cases in Age Interval								
0 - 60 days (0 - 2 months)	156	185	137	169	155	197	182	
61 - 120 days (3 - 4 months)	102	100	93	103	72	103	93	
121 - 180 days (5 - 6 months)	58	46	67	39	61	37	71	
181 - 270 days (7 - 9 months)	48	44	46	50	41	33	35	
> 270 days (> 9 months)	139	159	180	155	163	49	66	
Juv. ARY/CHINS/OTHER: # of Cases	91	98	89	104	101	75	86	94
Age (days)								
Median (50 percentile)	244	206	333	209	276	577	413	376
95 percentile	2222	2313	2405	2444	2534	2678	2717	2809
# of Cases in Age Interval								
0 - 60 days (0 - 2 months)	29	29	19	24	26	13	19	26
61 - 120 days (3 - 4 months)	6	11	10	17	7	5	12	9
121 - 180 days (5 - 6 months)	6	6	7	5	6	4	1	4
181 - 270 days (7 - 9 months)	7	9	6	11	11	5	4	3
> 270 days (> 9 months)	43	43	47	47	51	48	50	52

* Reflecting all documents received by 01/15/2014.

Table 5 (cont.). Age of Pending Cases

King County Superior Court

Reporting Category	Age of Pending Cases and # of Cases in Each Age Interval							
	Q1/12	Q2/12	Q3/12	Q4/12	Q1/13	Q2/13	Q3/13	Q4/13*
Juvenile Truancy: # of Cases	145	364	208	308	382	467	210	326
Age (days)								
Median (50 percentile)	11	69	158	67	26	68	494	167
95 percentile	472	440	606	588	673	620	971	948
# of Cases in Age Interval								
0 - 60 days (0 - 2 months)	97	128	11	151	226	182	11	139
61 - 120 days (3 - 4 months)	4	193	16	18	19	126	6	21
121 - 180 days (5 - 6 months)	13	1	129	0	17	21	28	3
181 - 270 days (7 - 9 months)	0	11	21	93	1	23	32	20
> 270 days (> 9 months)	31	31	31	46	119	115	133	143
Juvenile Offender: # of Cases	653	631	655	663	588	546	587	612
Age (days)								
Median (50 percentile)	59	59	63	77	80	76	81	74
95 percentile	682	738	800	552	681	508	545	517
# of Cases in Age Interval								
0 - 60 days (0 - 2 months)	332	320	312	265	250	219	231	267
61 - 120 days (3 - 4 months)	129	129	155	194	114	145	151	133
121 - 180 days (5 - 6 months)	50	49	51	81	76	51	67	79
181 - 270 days (7 - 9 months)	34	40	25	43	63	55	47	45
> 270 days (> 9 months)	108	93	112	80	85	76	91	88
Criminal RALJ: # of Cases	132	136	134	142	144	147	147	143
Age (days)								
Median (50 percentile)	141	144	139	147	160	157	144	141
95 percentile	424	510	371	400	420	392	384	391
# of Cases in Age Interval								
0 - 60 days (0 - 2 months)	31	36	29	27	26	34	34	34
61 - 120 days (3 - 4 months)	25	19	29	30	29	27	24	24
121 - 180 days (5 - 6 months)	23	35	25	28	30	24	30	28
181 - 270 days (7 - 9 months)	31	24	33	35	30	33	28	32
> 270 days (> 9 months)	22	22	18	22	29	29	31	25
Civil RALJ: # of Cases	39	44	43	45	32	22	24	38
Age (days)								
Median (50 percentile)	125	147	102	134	192	88	58	84
95 percentile	1655	961	837	431	376	375	231	323
# of Cases in Age Interval								
0 - 60 days (0 - 2 months)	7	9	12	8	5	5	12	12
61 - 120 days (3 - 4 months)	10	11	12	11	3	9	5	14
121 - 180 days (5 - 6 months)	7	6	6	13	8	3	5	8
181 - 270 days (7 - 9 months)	3	7	6	7	7	2	1	2
> 270 days (> 9 months)	12	11	7	6	9	3	1	2

* Reflecting all documents received by 01/15/2014.

Table 6. Seattle vs. Regional Justice Center (KNT): Filing, Resolution, Pending Caseload (%)

King County Superior Court

	Q4/12		Q1/13		Q2/13		Q3/13		Q4/13	
	SEA	KNT	SEA	KNT	SEA	KNT	SEA	KNT	SEA	KNT
Filings Total <i>(excl. filings with clerk)</i>	65%	35%	64%	36%	65%	35%	66%	34%	67%	33%
Criminal (excl. RALJ)	52%	48%	55%	45%	55%	45%	60%	40%	60%	40%
General Civil (excl. RALJ)	57%	43%	57%	43%	59%	41%	58%	42%	58%	42%
Domestic	64%	36%	63%	37%	62%	38%	65%	35%	63%	37%
Probate	78%	22%	78%	22%	79%	21%	77%	23%	80%	20%
Guardianship	63%	37%	65%	45%	60%	40%	65%	35%	65%	35%
Adoption	75%	25%	71%	29%	76%	24%	63%	37%	74%	26%
Paternity	51%	49%	52%	48%	45%	55%	49%	51%	41%	59%
Mental Illness	100%	---	100%	---	100%	---	100%	---	100%	---
Juv. DEP/TER/Other	55%	45%	63%	37%	58%	42%	48%	52%	44%	56%
Juvenile ARY/CHINS	44%	56%	46%	54%	41%	59%	37%	63%	52%	48%
Juvenile Truancy	44%	56%	34%	66%	43%	57%	90%	10%	47%	53%
Juvenile Offender	100%	---	100%	---	100%	---	100%	---	100%	---
Criminal RALJ	93%	7%	90%	10%	92%	8%	91%	9%	92%	8%
Civil RALJ	79%	21%	83%	17%	75%	25%	87%	13%	100%	---
Resolution Total <i>(excl. filings with clerk)</i>	65%	35%	64%	36%	65%	35%	64%	36%	66%	34%
Criminal (excl. RALJ)	58%	42%	56%	44%	56%	44%	54%	46%	59%	41%
General Civil (excl. RALJ)	57%	43%	57%	43%	59%	41%	57%	43%	59%	41%
Domestic	64%	36%	63%	37%	63%	37%	59%	41%	63%	37%
Probate	78%	22%	78%	22%	79%	21%	76%	24%	79%	21%
Guardianship	66%	34%	60%	40%	60%	40%	63%	37%	60%	40%
Adoption	77%	23%	72%	28%	74%	26%	67%	33%	69%	31%
Paternity	48%	52%	56%	44%	44%	56%	40%	60%	45%	55%
Mental Illness	100%	---	100%	---	100%	---	100%	---	100%	---
Juv. DEP/TER/Other	64%	36%	49%	51%	65%	35%	53%	47%	55%	45%
Juvenile ARY/CHINS	48%	52%	39%	61%	42%	58%	40%	60%	48%	52%
Juvenile Truancy	62%	38%	39%	61%	29%	71%	43%	57%	38%	62%
Juvenile Offender	100%	---	100%	---	100%	---	100%	---	100%	---
Criminal RALJ	96%	4%	87%	13%	98%	2%	96%	4%	91%	9%
Civil RALJ	65%	35%	100%	---	82%	18%	77%	23%	83%	17%
Pending Total <i>(excl. filings with clerk)</i>	66%	34%	66%	34%	65%	35%	67%	33%	66%	34%
Criminal (excl. RALJ)	51%	49%	49%	51%	50%	50%	52%	48%	54%	46%
General Civil (excl. RALJ)	69%	31%	69%	31%	70%	30%	69%	31%	69%	31%
Domestic	61%	39%	61%	39%	60%	40%	63%	37%	62%	38%
Probate	85%	15%	84%	16%	83%	17%	84%	16%	83%	17%
Guardianship	60%	40%	63%	37%	63%	37%	63%	37%	67%	33%
Adoption	76%	24%	76%	24%	77%	23%	75%	25%	80%	20%
Paternity	49%	51%	47%	53%	47%	53%	51%	49%	50%	50%
Mental Illness	100%	---	100%	---	100%	---	100%	---	100%	---
Juv. DEP/TER/Other	63%	37%	69%	31%	61%	39%	56%	44%	49%	51%
Juvenile ARY/CHINS	71%	29%	71%	29%	83%	17%	73%	27%	72%	28%
Juvenile Truancy	64%	36%	55%	45%	53%	47%	70%	30%	60%	40%
Juvenile Offender	100%	---	100%	---	100%	---	100%	---	100%	---
Criminal RALJ	93%	7%	94%	6%	92%	8%	91%	9%	91%	9%
Civil RALJ	89%	11%	81%	19%	77%	23%	83%	17%	92%	8%

Reflecting all documents received by 01/15/2014.

Table 7. Quarterly Utilization of Pro Tem Judges/Commissioners ⁽¹⁾

Category	Q2/11	Q3/11	Q4/11	Q1/12	Q2/12	Q3/12	Q4/12	Q1/13	Q2/13	Q3/13	Q4/13
Grand Total	1354	850	1157	869	1173	1304	864	814	1182	1391	2546
Judge FTE Equivalent ⁽³⁾	3.0	1.9	2.6	1.9	2.6	2.9	1.9	1.8	2.6	3.1	5.7
By Work Type											
On Trial/Hearings	1110	552	856	367	747	695	302	408	418	561	1069
On Preparation	200	151	250	231	247	320	164	193	273	291	367
Other or Unspecified Activity	43	147	51	272	179	289	397	213	491	539	1121
By Case Type											
Criminal	23	0	14	17	28	38	17	0	19	12	283
Civil	654	487	501	266	543	468	336	395	488	531	927
Domestic	414	220	409	426	424	532	298	311	505	568	1060
Probate	0	0	0	0	0	0	0	0	0	0	0
Guardianship	0	0	0	0	0	0	0	0	0	0	0
Adoption	0	0	0	0	0	0	0	0	0	0	0
Paternity	0	0	0	0	0	0	0	0	0	0	0
Mental Illness	0	0	0	0	0	0	0	0	0	0	0
Juv. DEP/TER/Other	34	79	178	138	137	194	79	85	117	181	157
Juvenile Truancy	84	24	0	0	16	0	30	11	13	29	58
Juvenile Offender	139	39	54	23	25	74	7	12	41	69	61
Other or Unspecified	7	0	0	0	0	0	98	0	0	0	0
By Calendar Type											
Criminal Plea	19	0	14	17	28	25	17	0	19	3	274
Criminal Trial	0	0	0	0	0	13	0	0	0	0	0
Civil Trial	22	83	20	25	70	49	0	83	59	0	120
Individual Calendar	0	0	0	0	0	0	0	0	0	0	0
Family Law	426	227	405	426	432	532	298	323	523	611	1118
Ex Parte	343	312	206	133	255	332	255	157	42	394	556
Mental Illness	145	45	262	108	159	86	88	155	219	124	218
Juv. DEP/TER/Other	147	95	192	131	137	179	75	85	112	181	165
Juvenile CHINS/ARY	0	0	0	0	0	0	0	0	0	0	0
Juvenile Truancy	80	30	0	7	9	15	4	0	0	0	0
Juvenile Offender	139	39	44	23	25	74	30	12	41	78	83
Other or Unspecified	33	21	0	0	0	0	98	0	0	0	0
By Reason											
Congestion	164	159	306	125	174	86	66	155	304	668	1519
Medical Coverage	91	114	134	73	81	199	102	201	153	89	8
Vacation	672	314	603	451	524	571	421	307	324	502	809
Training	155	227	85	191	324	154	84	58	323	129	200
Judicial Conference	272	0	0	0	51	25	0	4	0	0	0
Others	0	36	27	29	15	270	192	89	79	2	10

(1) This table is based on the time sheet for compensation

(2) Judge FTE Equivalent = # of hours / [7.5 hours/day * 20 days/month * 3 months] = # of hours/450.

The statistics on Pro Tem judge/commissioner use provide information on the external help the court has obtained in order to handle the workload. The data are collected on the time sheet for compensation (therefore it does not include unpaid volunteering or visiting judges/commissioners). The database on Pro Tem judges/commissioners is managed by the Administrative Services Department (ASD) of King County Superior Court. The Pro Tem total hours presented in this section are provided quarterly by ASD.

Table 8. Family Law Activity

	2ND QTR, 2012		3RD QTR, 2012		4TH QTR, 2012		1ST QTR, 2013		2ND QTR, 2013		3RD QTR, 2013		4TH QTR, 2013	
	HRGS	ORDS	HRGS	ORDS	HRGS	ORDS	HRGS	ORDS	HRGS	ORDS	HRGS	ORDS	HRGS	ORDS
SEATTLE														
FAM.LAW	663	2069	677	2241	410	2103	354	1883	473	1888	481	2227	458	2043
DAILY AVG.	11	34	11	37	7	34	6	31	8	31	8	37	8	33
PATERNITY	404	1622	386	1776	62	1668	55	1571	40	1434	42	1506	49	1207
DAILY AVG.	7	27	6	29	1	27	1	26	1	24	1	25	1	20
DOM. VIOL.	397	560	285	557	183	526	204	513	238	481	250	534	211	439
DAILY AVG.	7	9	5	9	3	9	3	8	4	8	4	9	3	7
	2ND QTR, 2012		3RD QTR, 2012		4TH QTR, 2012		1ST QTR, 2013		2ND QTR, 2013		3RD QTR, 2013		4TH QTR, 2013	
	HRGS	HRGS	HRGS	ORDS	HRGS	ORDS	HRGS	ORDS	HRGS	ORDS	HRGS	ORDS	HRGS	ORDS
KENT														
FAM.LAW	741	1859	620	1655	713	1714	730	1845	451	1635	436	1793	449	1733
DAILY AVG.	12	30	10	27	12	28	12	30	7	27	7	29	7	28
PATERNITY	406	1241	392	1313	376	1183	366	1157	144	1154	82	1227	62	1088
DAILY AVG.	7	20	6	22	6	19	6	19	2	19	1	20	1	18
DOM. VIOL.	438	526	455	543	433	516	393	489	370	443	429	546	363	532
DAILY AVG.	7	9	7	9	7	8	6	8	6	7	7	9	6	9
	2ND QTR, 2012		3RD QTR, 2012		4TH QTR, 2012		1ST QTR, 2013		2ND QTR, 2013		3RD QTR, 2013		4TH QTR, 2013	
	HRGS	ORDS	HRGS	ORDS	HRGS	ORDS	HRGS	ORDS	HRGS	ORDS	HRGS	ORDS	HRGS	ORDS
GRAND														
TOTAL	3049	7877	2815	8085	2177	7710	2102	7458	1716	7035	1720	7833	1592	7042
OVERALL														
DAILY AVG.	50	129	46	133	36	126	34	122	28	115	28	128	26	115

The statistics on family law and Ex Parte activity are obtained directly from SCOMIS using the appropriate docket codes.

Table 9. Ex Parte Activity

SEATTLE	4TH QTR, 2012		1ST QTR, 2013		2ND QTR, 2013		3RD QTR, 2013		4TH QTR, 2013	
	HRGS	ORDS	HRGS	ORDS	HRGS	ORDS	HRGS	ORDS	HRGS	ORDS
ADOP/PAT	139	463	48	206	66	276	62	299	104	322
DOM. VIOL.	9	372	6	343	5	371	5	388	9	338
OTH. CIVIL	284	495	311	511	349	562	370	631	323	573
DOMESTIC	832	2475	727	2137	718	2256	731	2284	662	2146
PROB/GDN	1226	2487	1355	2489	1437	2420	1258	2134	1336	2430
SUBTOTAL	2490	6292	2447	5686	2575	5885	2426	5736	2434	5809
DAILY AVG.	41	103	40	93	42	96	40	94	40	95

SEATTLE VIA CLERK (starting Jan 2009)	4TH QTR, 2012		1ST QTR, 2013		2ND QTR, 2013		3RD QTR, 2013		4TH QTR, 2013	
	----	ORDS	----	ORDS	----	ORDS	----	ORDS	----	ORDS
ADOP/PAT	----	153	----	109	----	107	----	101	----	151
DOM. VIOL.	----	3	----	6	----	9	----	4	----	5
OTH. CIVIL	----	6421	----	5581	----	5310	----	5343	----	4997
DOMESTIC	----	1339	----	1183	----	1401	----	1401	----	1397
PROB/GDN	----	743	----	718	----	792	----	805	----	792
SUBTOTAL	----	8659	----	7597	----	7619	----	7654	----	7342
DAILY AVG.	----	142	----	125	----	125	----	125	----	120

SEATTLE MAIL-IN	4TH QTR, 2012		1ST QTR, 2013		2ND QTR, 2013		3RD QTR, 2013		4TH QTR, 2013	
	----	ORDS	----	ORDS	----	ORDS	----	ORDS	----	ORDS
ADOP/PAT	----	0	----	1	----	3	----	4	----	0
DOM. VIOL.	----	0	----	1	----	0	----	0	----	0
OTH. CIVIL	----	142	----	135	----	130	----	167	----	125
DOMESTIC	----	37	----	22	----	31	----	35	----	37
PROB/GDN	----	84	----	85	----	74	----	118	----	65
SUBTOTAL	----	263	----	244	----	238	----	324	----	227
DAILY AVG.	----	4	----	4	----	4	----	5	----	4

Note: Ex Parte via Clerk started in January 2009.

Table 9 (cont). Ex Parte Activity

KENT	4TH QTR, 2012		1ST QTR, 2013		2ND QTR, 2013		3RD QTR, 2013		4TH QTR, 2013	
	HRGS	ORDS	HRGS	ORDS	HRGS	ORDS	HRGS	ORDS	HRGS	ORDS
ADOP/PAT	52	136	22	72	36	121	46	140	48	155
DOM. VIOL.	12	409	3	403	5	433	1	457	4	376
OTH. CIVIL	303	475	295	483	285	514	322	546	263	449
DOMESTIC	441	1375	359	1297	370	1331	463	1620	395	1366
PROB/GDN	382	833	406	854	421	856	457	822	468	894
SUBTOTAL	1190	3228	1085	3109	1117	3255	1289	3585	1178	3240
DAILY AVG.	20	53	18	51	18	53	21	59	19	53

KENT VIA CLERK (starting Jan 2009)	4TH QTR, 2012		1ST QTR, 2013		2ND QTR, 2013		3RD QTR, 2013		4TH QTR, 2013	
	----	ORDS	----	ORDS	----	ORDS	----	ORDS	----	ORDS
ADOP/PAT	----	51	----	60	----	40	----	64	----	39
DOM. VIOL.	----	0	----	3	----	0	----	0	----	3
OTH. CIVIL	----	2247	----	3376	----	3109	----	3254	----	3020
DOMESTIC	----	450	----	471	----	509	----	484	----	479
PROB/GDN	----	297	----	266	----	249	----	256	----	259
SUBTOTAL	----	3045	----	4176	----	3907	----	4058	----	3800
DAILY AVG.	----	50	----	68	----	64	----	67	----	62

KENT MAIL-IN	4TH QTR, 2012		1ST QTR, 2013		2ND QTR, 2013		3RD QTR, 2013		4TH QTR, 2013	
	----	ORDS	----	ORDS	----	ORDS	----	ORDS	----	ORDS
ADOP/PAT	----	0	----	0	----	0	----	1	----	0
DOM. VIOL.	----	0	----	0	----	0	----	0	----	0
OTH. CIVIL	----	31	----	26	----	43	----	34	----	25
DOMESTIC	----	16	----	19	----	12	----	11	----	12
PROB/GDN	----	20	----	26	----	37	----	36	----	27
SUBTOTAL	----	67	----	71	----	92	----	82	----	64
DAILY AVG.	----	1	----	1	----	2	----	1	----	1

ALL SEATTLE AND KENT	4TH QTR, 2012		1ST QTR, 2013		2ND QTR, 2013		3RD QTR, 2013		4TH QTR, 2013	
	HRGS	ORDS	HRGS	ORDS	HRGS	ORDS	HRGS	ORDS	HRGS	ORDS
GRAND TOTAL	3680	21555	3532	20884	3692	20997	3715	21440	3612	20483
DAILY AVERAGE	60.3	353.4	57.9	342.4	60.5	344.2	60.9	351.5	59.2	335.8

Note: Ex Parte via Clerk started in January 2009.

Appendix Glossary and Definition

General Definition

Active Status

A case is active if it is not on suspense status (see Suspense Status).

Case

A case is defined as a filing with an assigned case number (or a case number plus a defendant connection code in pre-1990 criminal filings).

Completion

A case is completed when dispositive document is filed with the court following resolution.

Jury Trial

A hearing is reported as a jury trial if the jury is impaneled.

New Case

A new case is an original filing with new case number assigned.

Non-Jury Trial

A hearing is reported as a non-jury trial if an opening statement is made, waived, or reserved. A juvenile fact finding hearings is reported as a non-jury trial.

Pending Case

A case is defined as pending if it is unresolved and active (not in suspense).

Reactivated Case

A case returns to active status from suspense status during the reporting period.

Re-opened Cases

A case is re-opened if it has been previously completed but returns to the court for supplement or change of the original case resolution. A re-opened case does not have a new case number. Only resolved cases can be "re-opened". (Note: measurement not available as of July 1996. SCOMIS capacity may exist after conversion to DB2 in the future).

Resolution

A case is resolved if all issues in the complaint are fully adjudicated.

Suspended Case

A case is placed in suspense status from active status during the reporting period.

Suspense Status

A case is on suspense status if it is on warrant, appeal, stay, mediation, arbitration ("Deferred Prosecution" is not a suspense status, but is treated as a resolution).

Trial

A hearing set before a judge or jury in which all the issues in the case are meant to be resolved. A trial normally includes opening statements to the court or jury stating what the evidence will show, introduction of witnesses and exhibits for direct and cross examination, final arguments to the court or jury in which counsel argue both the evidence and the law, and judgment by the court or jury stating what the facts of the case are and what law applies to the facts. In a jury case, it also includes the selection of the jury. A trial can be held

for one or more cases. A single trial may be held to adjudicate more than one case (as defined above).

Post-resolution Modifications

In this report, we also report the post-resolution modifications for case type 3 (domestic) and 5 (paternity). These numbers are based on the tracks (DMOD and DTBA) opened after the original resolution date (i.e., if the track beginning date is after the resolution date).

Section I. Filing Activity

Additional Filings with Clerk

Filings with clerk without assigning a SCOMIS case number. This reporting category consists of search warrants, wire taps, extradition, oaths and orders pertaining to Pro Tem judge/commissioners/Court

Reporters/Bailiffs, and other "non-case" filings as recorded under 12050 system.

Annual Filings

Total number of new case filings during the calendar year (January 1 to December 31).

Adoption Cases

This reporting category includes the following "cause-of-action" codes within SCOMIS case type 5:

- Relinquishment (REL)
- Termination of Parent/Child Relationship (TER)
- Adoption (ADP)
- Miscellaneous (MSC)
- Name Change - Confidential (CHN)
- Initial Pre-Placement Report Filed with Clerk (PPR)

General Civil Cases

"General Civil" cases include all civil matters other than Domestic, Probate, Guardianship, Adoption, Paternity and appeals from courts of limited jurisdiction and "Matters Filed with Clerk". "General civil" cases include small claims as identified by the "Small Claim Track". This reporting category includes the following "cause-of-action" codes within SCOMIS case type 2:

- Administrative Law Review (ALR)
- Change of Name - Non-Confidential (CHN)
- Collection (COL)
- Commercial (COM)
- Condemnation (CON)
- Domestic Violence Protection (DVP)
- Emancipation of Minor (EOM)
- Foreclosure (FOR)
- Civil Harassment (HAR)
- Injunction (INJ)
- Other Malpractice (MAL)
- Medical Malpractice (MED)
- Meretricious Relationship (MER)
- Malicious Harassment (MHA)
- Miscellaneous (MSC)
- Minor Settlement (MST) - as of 10/1/96, under Guardianship
- Petition of Civil Commitment- Sexual Predator (PCC)
- Property Fairness (PFA)

- Personal Injury (PIN)
- Property Damage (PRP)
- Quiet Title (QTI)
- Small Claims (LCA/LCI on "Small Claim Track")
- Seizure of Property from the Commission of a Crime (SPC)
- Seizure of Property Resulting from a Crime (SPR)
- Tort Motor Vehicle (TMV)
- Tort Other (TTO)
- Unlawful Detainer (UND)
- Wrongful Death (WDE)
- Writ of Habeas Corpus (WHC)
- Miscellaneous Writ (WMW)
- Writ of Mandamus (WRM)
- Writ of Restitution (WRR)
- Writ of Review (WRV)

Civil RALJ Cases

Civil appeals from courts of limited jurisdiction (excluding small claims as identified by the "Small Claim Track"). Civil RALJ includes the following "cause-of-action" reporting categories:

- Lower Court Appeal - Civil and "Not a Small Claim"
- Lower Court Appeal - Infraction and "Not a Small Claim"

Note: The Civil RALJ cases are determined based on both SCOMIS "cause-of-action" code (LCA and LCI) within SCOMIS case type 2 and the "Small Claim Track".

Criminal Cases (excl. RALJ)

Adult criminal cases, excluding appeals from courts of limited jurisdiction. This reporting category includes the following crime categories within SCOMIS case type 1:

- Homicide
- Sex Crime
- Robbery
- Assault
- Theft/Burglary
- Motor Vehicle Theft
- Controlled Substance
- Other Felony
- Others (Misdemeanor, Non-charge Case)

Criminal RALJ Cases

Criminal appeals from courts of limited jurisdiction. This reporting category includes all SCOMIS case type 1 cases that have an appeal from lower court field of "Yes".

Domestic Cases

This reporting category includes the following "cause-of-action" codes within SCOMIS case type 3:

- Annulment – Invalidity (INV)
- Child Custody (CUS)
- Dissolution With Children Of The Marriage (DIC)
- Dissolution With No Children Of The Marriage (DIN)
- Dissolution of Domestic Partnership – With Children (DPC)
- Dissolution of Domestic Partnership – With No Children (DPN)
- Foreign Judgment (FJU)
- Invalidity – Domestic Partnership (INP)
- Mandatory Wage Assignment (MWA)
- Miscellaneous (MSC)
- Modification (MOD)
- Modification – Support Only (MDS)
- Out-Of-State Child Custody (OSC)
- Parenting Plan / Child Support (PPS)
- Reciprocal, Respondent In-County (RIC)
- Reciprocal, Respondent Out-of-County (ROC)
- Legal Separation (SEP)
- Legal Separation – Domestic Partnership (SPD)

Guardianship Cases

This reporting category includes the following "cause-of-action" codes within SCOMIS case type 4:

- Guardianship/Estate (G/E)
- Guardianship (GND)
- Limited Guardianship (LGD)
- Minor Settlement (MST)

Juvenile ARY/CHINS Cases

Juvenile dependency cases, excluding truancy cases and DEP cause code. This reporting category includes following "cause-of-action" codes within SCOMIS case type 7:

- Alternative Residential Placement (ARP)
- At-Risk Youth (ARY)
- Child in Need of Service (CNS)

Juvenile Dependency Cases

This reporting category includes following "cause-of-action" codes within SCOMIS case type 7:

- Dependency (DEP)
- Termination (TER)
- Developmental Disability (DDP)
- Guardianship Foster Children (GFC)
- Reinstatement of Parental Rights (RPR)
- Extension of Foster Care (EFC)
- Relative Visitation (RVS)

Juvenile Offender Cases

This reporting category includes the following crime categories in SCOMIS case type 8:

- Homicide
- Sex Crime
- Robbery
- Assault
- Theft/Burglary
- Motor Vehicle Theft
- Controlled Substance
- Other Felony
- Others (Misdemeanor, Non-charge Case)

Juvenile Truancy Cases

Mandatory truancy filings started on 10/01/1995. This reporting category includes the following "cause-of-action" code within SCOMIS case type 7:

- Truancy (TRU)

Matters Filed with Clerk

Filings with clerk (case numbers assigned), but requiring little or no judicial action. This reporting category includes the following "cause-of-action" codes within SCOMIS case type 2:

- Abstract of Judgment (ABJ)
- Foreign Judgment (FJU)
- Tax Warrant (TAX)
- Transcripts of Judgment (TRJ)

Mental Illness Cases

This reporting category includes all "cause-of-action" codes within SCOMIS case type 6:

- Alcoholic Treatment (ALT)
- Mental Illness - Adult (MI)
- Mental Illness - Juvenile (MIJ)

Paternity Cases

This reporting category includes the following "cause-of-action" codes within SCOMIS case type 5:

- Modification (MOD)
- Paternity (PAT)
- Paternity/URES/UFSA (PUR)

Probate Cases

This reporting category includes the following "cause-of-action" codes within SCOMIS case type 4:

- Absentee (ABS)
- Disclaimer (DSC)
- Estate (EST)
- Foreign Will (FNW)
- Miscellaneous (MSC)
- Non-Probate Notice to Creditors (NNC)
- Will Only (WLL)

Total Cases

New cases with case numbers assigned, excluding “Matters Filed with Clerk” and “Additional Filings with Clerk”.

Year-to-Date Filings

Total number of new filings since the beginning of calendar year (January 1) to the end of reporting period.

Section II. Resolution Category

Adoption - Resolved by Trial

Court Decision after Non-Jury Trial (CDAT)

Adoption - Uncontested

Consolidated Case (CONS)
Uncontested Resolution (UNDS)

Adoption - Settlement/Dismissal

Closed by Court Order after a Hearing (CLCO)
Dismissal without Trial (DSM)
Dismissal after Non-Jury Trial Commencement (DAT)
Settled after Non-Jury Trial Commencement (SAT)
Settled by Parties/Agreed Judgment (STPR)

Adoption - Closure by Clerk

Dismissal/Closure by Clerk (DSCK)

Adoption - Others

Change of Venue/Jurisdiction (CHV)
Other Non-specified Resolutions

Civil - Resolved by Jury Trial

Jury Verdict after Trial (JVAT)

Civil - Resolved by Non-Jury Trial

Court Decision after Non-Jury Trial (CDAT)

Civil - Summary Judgment

Summary Judgment (SMJG)

Civil - Default/Uncontested

Consolidated Case (CONS)
Default Judgment (DFJG)
Uncontested Resolution (UNDS)

Civil - Arbitration

Settle by Arbitration (ARBA)

Civil - Settlement/Dismissal

Closed by Court Order after a Hearing (CLCO)
Dismissal after Non-Jury Trial (DAT)
Dismissal after Jury Trial (DJT)
Dismissal (DSM)
Settled after Non-Jury Trial Commencement (SAT)
Settled after Jury Trial Commencement (SJT)
Settled by Parties/Agreed Judgment (STPR)

Civil - Closure by Clerk

Dismissal/Closure by Clerk (DSCK)

Civil - Others

Transferred to Federal bankruptcy Court (BANK)
Change of Venue/Jurisdiction (CHV)
Other Non-specified Resolutions

Civil RALJ - RALJ Decision

Court Decision to Affirm Appeal/review (CDTA)
Court Decision to Modify Appeal/Review (CDTM)
Court Decision to Reverse Appeal/review (CDTR)

Civil RALJ - Dismissal

Dismissal and Remand of Appeal/Review (DSRM)

Civil RALJ - Others

Other Non-specified Resolutions

Comparison with Court Standard

Percentage of cases actually falling within the Court’s standard benchmark.

Court Standard

Benchmarks set by a state advisory committee and adopted by the court indicating percentage of cases to be resolved at certain age (in months, 1 month = 30 days as used in the Advisory Case Processing Time Standard as published in the Court Rule).

Court standard is based on timelines as suggested by State Advisory Committee. For a case type with no time standard, the standard for a similar case type is adopted if appropriate.

Criminal: 90% by 4 months, 98% by 6 months, 100% by 9 months.

Civil: 90% by 12 months, 98% by 18 months, 100% by 24 months.

Domestic: 90% by 8 months, 98% by 10 months, 100% by 14 months.

Probate/Guardianship: 90% by 8 months, 98% by 18 months, 100% by 36 months.

Adoption/Paternity: 90% by 8 months, 98% by 10 months, 100% by 14 months.

Mental Illness/Juvenile Truancy: No standard yet.

Juvenile Dependency: 90% by 8 months, 98% by 10 months, 100% by 14 months.

Juvenile Offender: 90% by 4 months, 98% by 6 months, 100% by 9 months.

Criminal RALJ/Civil RALJ: 90% by 4 months, 98% by 5 months, 100% by 6 months.

Criminal - Resolved by Jury Trial

Acquittal by Jury (AQJV)
Convicted - Jury Verdict after Trial (CVJV)

Criminal - Resolved by Non-Jury Trial

Acquittal by Court (AQCT)
Convicted - Court Decision after Non-Jury Trial (CVCT)

Criminal - Resolved by Guilty Plea

Guilty Plea (GP)
Guilty Plea after Non-Jury Trial Commencement (GPAT)
Guilty Plea after Jury Trial Commencement (GPJT)

Criminal - Dismissal

Dismissal after Non-Jury Trial Commencement (DAT)
Dismissal after Jury Trial Commencement (DJT)
Dismissal (DSM)

Criminal - Others

Change of Venue (CHV)
Consolidated Case (CONS)
Continued Order of Prosecution with Completion (CTOP)*
Deferred Prosecution (DFPD)
Dismissal/Closure by Clerk (DSCK)
Governor’s warrant (GW)
Not Guilty by Reason of Insanity (NGRI)
Uncontested Resolution (UNDS)
Waiver of Extradition (WE)
Other Non-specified Resolutions

* Note: For adult criminal cases, “CTOP” does not necessarily constitute resolution. An adult criminal case with a “CTOP” as resolution code is counted as a resolved case only if a completion code exists along with the “CTOP”. If the resolution code is CTOP and there is no completion code, then the case is treated as unresolved. The primary reason for combining “CTOP” with a completion code is to determine resolution for drug court cases (CTOP is entered in the

SCOMIS resolution field as soon as a defendant enrolls in Drug Court). This rule on “CTOP” applies to adult criminal cases only.

Criminal RALJ - RALJ Decision

Court Decision to Affirm Appeal/review (CDTA)
Court Decision to Modify Appeal/Review (CDTM)
Court Decision to Reverse Appeal/review (CDTR)

Criminal RALJ - Dismissal

Dismissal and Remand of Appeal/Review (DSRM)

Criminal RALJ - Others

Other Non-specified Resolutions

Domestic - Resolved by Trial

Court Decision after Non-Jury Trial (CDAT)

Domestic - Default/Uncontested

Consolidated Case (CONS)
Default Judgment (DFJG)
Uncontested Resolution (UNDS)

Domestic - Settlement/Dismissal

Settled by Arbitration (ARBA)
Closed by Court Order after a Hearing (CLCO)
Dismissal after Non-Jury Trial Commencement (DAT)
Dismissal (DSM)
Settled after Non-Jury Trial Commencement (SAT)
Settled by Parties/Agreed Judgment (STPR)

Domestic - Closure by Clerk

Dismissal/Closure by Clerk (DSCK)

Domestic - Others

Change of Venue/Jurisdiction (CHV)
Summary Judgment (SMJG)
Other Non-specified Resolutions

Guardianship - Guardian Appointed

Guardian Appointed (PRGA)

Guardianship - Dismissal

Closed by Court Order after a Hearing (CLCO)
Dismissal (DSM)

Guardianship - Closure by Clerk

Dismissal/Closure by Clerk (DSCK)

Guardianship - Others

Change of Venue/Jurisdiction (CHV)
Consolidated Case (CONS)
Uncontested Resolution (UNDS)
Other Non-specified Resolutions

Juvenile Dependency - Finding of Dependency

Approved Petition (APP)

Juvenile Dependency - Dismissal

Dismissal (DSM)

Juvenile Dependency - Others

Change of Venue/Jurisdiction (CHV)
Consolidated Case (CONS)
Transfer of Jurisdiction (TRJU)
Other Non-specified Resolutions

Juvenile Offender - Resolved by Trial

Acquittal by Court (AQCT)
Convicted - Court Decision after Adjudictory Hearing (CVCT)

Juvenile Offender - Resolved by Guilty Plea

Guilty Plea before Adjudictory Hearing Commencement (GP)
Guilty Plea after Adjudictory Hearing Commencement (GPAT)

Juvenile Offender - Dismissal

Dismissal after Adjudictory Hearing Commencement (DAT)
Dismissal (DSM)

Juvenile Offender - Others

Change of venue (CHV)
Dismissal/Closure by Clerk (DSCK)
Consolidated Case (CONS)

Continued Prosecution (CTOP)
Decline of Jurisdiction (DECL)
Uncontested Resolution (UNDS)
Other Non-specified Resolutions

Juvenile Truancy - Finding of Truancy

Approved Petition (APP)

Juvenile Truancy - Dismissal

Dismissal (DSM)

Juvenile Truancy - Others

Change of Venue (CHV)
Consolidated Case (CONS)
Transfer of Jurisdiction (TRJU)
Other Non-specified Resolutions

Mental Illness - Court Decision to Commit

Court Decision to Commit (CDTC)

Mental Illness - Closed by Court

Closed by Court (CLCO)

Mental Illness - Dismissal

Dismissal (DSM)

Mental Illness - Others

Change of Venue/Jurisdiction (CHV)
Uncontested Resolution (UNDS)
Other Non-specified Resolutions

Paternity - Resolved by Trial

Court Decision after Non-Jury Trial (CDAT)

Paternity - Summary Judgment

Summary Judgment (SMJG)

Paternity - Default/Uncontested

Consolidated Case (CONS)
Default Judgment (DFJG)
Uncontested Resolution (UNDS)

Paternity - Settlement/Dismissal

Settled by Arbitration (ARBA)
Closed by Court Order after a Hearing (CLCO)
Dismissal after Non-Jury Trial Commencement (DAT)
Dismissal (DSM)
Settled after Non-Jury Trial Commencement (SAT)
Settled by Partied/Agreed Judgment (STPR)

Paternity - Closure by Clerk

Dismissal/Closure by Clerk (DSCK)

Paternity - Others

Change of Venue (CHV)
Other Non-specified Resolutions

Percentile

Percent of cases resolved at a given age. For example, if resolved cases had a 98 percentile of 12 months, it means that 98% of the cases were resolved within the age of 12 months, or conversely 2% of the cases were resolved after 12 months, not counting suspense time.

Probate - Personal Representative Appointed

Non-Intervention Probate (NIP)
Personal Representative Appointed (PRGA)

Probate - Dismissal

Closed by Court Order after a Hearing (CLCO)
Dismissal (DSM)

Probate - Closure by Clerk

Dismissal/Closure by Clerk (DSCK)

Probate - Others

Change of Venue (CHV)
Consolidated Case (CONS)
Uncontested Resolution (UNDS)
Other Non-specified Resolutions

Backlogged Cases

Active pending cases with an age exceeding the court-adopted time standard for each specific case type (recommended by the State Advisory Committee, see definition for *Court Standard*).

Section III. Pending Caseload

Adjustment

Adjustment made because of vacating of resolutions, or change in suspense status between two reporting period.

End Pending

Total number of pending cases at the end of reporting period.

Previous Pending

Total number of pending cases at the beginning of reporting period.

Resolution Rate

Resolution rate is defined as the ratio of number of resolutions to number of new filings (i.e., number of resolutions divided by number of new filings) during the reporting period. The resolution rate measures the relative pace of resolution in relation to the pace of new filings. A resolution rate of greater than 1 indicates the number of resolutions exceeds the number of new filings.

On-review Status

Cases that have been resolved (post-resolution) but still need court resources for periodic review and other remaining outstanding issues.

Probate (EST), Paternity (PAT) and Dependency (DEP): Resolved and not completed (paternity or dependency established, but outstanding issues remain).

Guardianship (GDN,LGD,G/E): Resolved and on tracks of G1,G2,G3,GE or GD; Minor Settlement (MST): Resolved with a future hearing date.

Section IV. Age of Pending Cases

Case Age

The age of a case is the time (number of days) since the filing date, less any suspense time if applicable.

Median Age

The median age is the time that 50% of the cases are under and 50% are above the given age. For example, if pending cases have a median age of 12 months, it means that 50% of the pending cases are within the age of 12 months, and 50% of pending cases are over 12 months. The median age is more robust to cases with extreme age values than the average age.

Suspense Time

Time (days) that a case is on suspense status before its resolution. If a case has more than one suspense between filing and resolution, the suspense time is the total from all suspenses. Time on suspense status after resolution (e.g., appeals) is not counted.