

King County Superior Court  
Quarterly Statistical Report

First Quarter 2014

Department of Judicial Administration  
Prepared by: Shiquan Liao, Ph.D., Statistician

*Release Date: April 20, 2014*

**Report #: QTR-2014-1**

Table 1. Year-to-Date Filing Activity

King County Superior Court

Reporting Category	Year-to-Date and Annual Filing Activity <sup>(1)</sup>					2013-2014 change (+ means "increase")		% of 2014 Total Filing <sup>(2)</sup>
	2010	2011	2012	2013	2014	Cases	Percentage	
<b>Total (incl. RALJ)</b>								
Year-to-Date Filing	15137	15403	14229	13636	12743	-893	-8.5%	
Annual Filing	59798	58337	54834	52755				
<b>Criminal (excl. RALJ)</b>								
Year-to-Date Filing	1638	1655	1538	1490	1587	+97	+6.5%	12.5%
Annual Filing	6691	5986	5942	6045				
<b>General Civil (excl. Asbestos)</b>								
Year-to-Date Filing	6825	6984	6400	5834	5122	-712	-12.2%	40.2%
Annual Filing	27603	27499	24477	22347				
<b>Asbestos Cases (civil) <sup>(3)</sup></b>								
Year-to-Date Filing	5	9	7	19	9	-10	-52.6%	0.1%
Annual Filing	29	43	36	63				
<b>Domestic</b>								
Year-to-Date Filing	2034	1993	1961	2011	1903	-108	-5.4%	14.9%
Annual Filing	7850	7865	7678	7897				
<b>Probate</b>								
Year-to-Date Filing	1275	1490	1405	1606	1501	-105	-6.5%	11.8%
Annual Filing	5203	5417	5492	5844				
<b>Guardianship</b>								
Year-to-Date Filing	221	204	204	210	245	+35	+16.7%	1.9%
Annual Filing	893	837	879	884				
<b>Adoption</b>								
Year-to-Date Filing	173	163	119	115	121	+6	+5.2%	0.9%
Annual Filing	686	688	511	483				
<b>Paternity</b>								
Year-to-Date Filing	332	264	334	246	197	-49	-19.9%	1.5%
Annual Filing	1189	1039	1161	931				
<b>Mental Illness</b>								
Year-to-Date Filing	730	827	888	820	876	+56	+6.8%	6.9%
Annual Filing	3059	3506	3591	3678				
<b>Juvenile DEP/TER</b>								
Year-to-Date Filing	280	288	255	246	302	+56	+22.8%	2.4%
Annual Filing	1038	1060	1050	1137				
<b>Juvenile ARY/CHINS/OTHER</b>								
Year-to-Date Filing	108	89	70	55	76	+21	+38.2%	0.6%
Annual Filing	347	303	242	168				
<b>Juvenile Truancy</b>								
Year-to-Date Filing	595	606	451	533	390	-143	-26.8%	3.1%
Annual Filing	1614	1350	1271	1236				
<b>Juvenile Offender</b>								
Year-to-Date Filing	862	762	538	405	363	-42	-10.4%	2.8%
Annual Filing	3967	3356	2496	2249				
<b>Criminal RALJ</b>								
Year-to-Date Filing	41	54	47	40	43	+3	+7.5%	0.3%
Annual Filing	176	191	192	181				
<b>Civil RALJ</b>								
Year-to-Date Filing	18	15	12	6	8	+2	+33.3%	0.1%
Annual Filing	64	57	63	53				
<b>Matters Filed with Clerk <sup>(4)</sup></b>								
Year-to-Date Filing	3782	3741	3825	3698	3818	+120	+3.2%	
Annual Filing	15586	14799	15046	13763				

(1) New filings only (based on filing date), excluding re-opened cases (unable to count), and reflecting all documents received by 04/15/2014.

(2) New filings of each reporting category as percentage of "Year-to-Date Filing".

(3) "Matters Filed with Clerk" and "Additional Filings with Clerk" are not included in the "Total".

Chart 1-A. Quarterly Filing Activity  
Total Judicial Cases Only ("Matters Filed with Clerk" excluded)

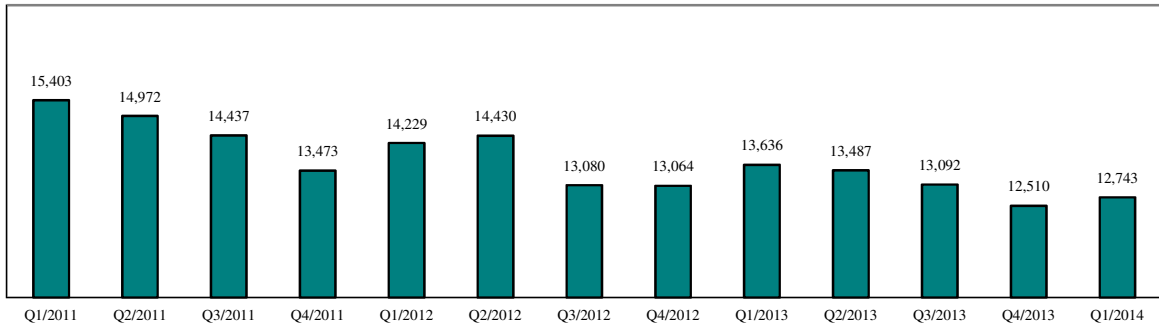
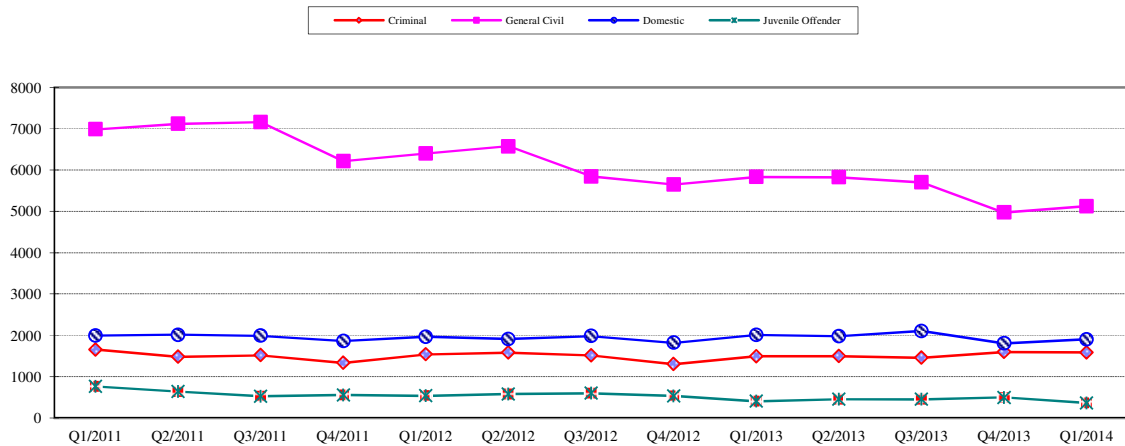


Chart 1-B. Quarterly Filings: Criminal, Domestic, General Civil and Juvenile Offender Cases Only



\* Note: "General Civil" is specifically defined in this report. The category of "General Civil" does **not** include the following case types: domestic, probate, guardianship, adoption, paternity, mental illness, juvenile cases (dependency, at-risk youth, child-in-need of service, civil RALJ, and tax filings that don't require judicial resources ("matters filed with clerk"). Please check the Appendix for the cause codes in the "General Civil" category.

Table 1-A. Post-Resolution Modifications (Domestic and Paternity Cases)

*Based on Tracks Opened After Original Resolution Date*

		2012Q1			2012Q2			2012Q3			2012Q4			Year 2012		
Location	Case Type	DMOD	DTBA	Total	DMOD	DTBA	Total	DMOD	DTBA	Total	DMOD	DTBA	Total	DMOD	DTBA	Total
KNT	Domestic	183	55	238	153	56	209	150	61	211	159	38	197	645	210	855
	Paternity	15	4	19	14	8	22	16	4	20	13	6	19	58	22	80
<b>KNT Total</b>		<b>198</b>	<b>59</b>	<b>257</b>	<b>167</b>	<b>64</b>	<b>231</b>	<b>166</b>	<b>65</b>	<b>231</b>	<b>172</b>	<b>44</b>	<b>216</b>	<b>703</b>	<b>232</b>	<b>935</b>
SEA	Domestic	153	68	221	156	84	240	192	71	263	149	68	217	650	291	941
	Paternity	6	18	24	13	22	35	16	10	26	4	7	11	39	57	96
<b>SEA Total</b>		<b>159</b>	<b>86</b>	<b>245</b>	<b>169</b>	<b>106</b>	<b>275</b>	<b>208</b>	<b>81</b>	<b>289</b>	<b>153</b>	<b>75</b>	<b>228</b>	<b>689</b>	<b>348</b>	<b>1037</b>
<b>KNT/SEA Total</b>		<b>357</b>	<b>145</b>	<b>502</b>	<b>336</b>	<b>170</b>	<b>506</b>	<b>374</b>	<b>146</b>	<b>520</b>	<b>325</b>	<b>119</b>	<b>444</b>	<b>1392</b>	<b>580</b>	<b>1972</b>
		2013Q1			2013Q2			2013Q3			2013Q4			Year 2013		
Location	Case Type	DMOD	DTBA	Total	DMOD	DTBA	Total	DMOD	DTBA	Total	DMOD	DTBA	Total	DMOD	DTBA	Total
KNT	Domestic	160	47	207	149	59	208	179	45	224	152	53	205	640	204	844
	Paternity	17	7	24	13	11	24	14	3	17	11	7	18	55	28	83
<b>KNT Total</b>		<b>177</b>	<b>54</b>	<b>231</b>	<b>162</b>	<b>70</b>	<b>232</b>	<b>193</b>	<b>48</b>	<b>241</b>	<b>163</b>	<b>60</b>	<b>223</b>	<b>695</b>	<b>232</b>	<b>927</b>
SEA	Domestic	132	67	199	169	102	271	185	74	259	152	70	222	638	313	951
	Paternity	6	9	15	16	11	27	18	6	24	13	5	18	53	31	84
<b>SEA Total</b>		<b>138</b>	<b>76</b>	<b>214</b>	<b>185</b>	<b>113</b>	<b>298</b>	<b>203</b>	<b>80</b>	<b>283</b>	<b>165</b>	<b>75</b>	<b>240</b>	<b>691</b>	<b>344</b>	<b>1035</b>
<b>KNT/SEA Total</b>		<b>315</b>	<b>130</b>	<b>445</b>	<b>347</b>	<b>183</b>	<b>530</b>	<b>396</b>	<b>128</b>	<b>524</b>	<b>328</b>	<b>135</b>	<b>463</b>	<b>1386</b>	<b>576</b>	<b>1962</b>
		2014Q1			2014Q2			2014Q3			2014Q4			Year 2014		
Location	Case Type	DMOD	DTBA	Total	DMOD	DTBA	Total	DMOD	DTBA	Total	DMOD	DTBA	Total	DMOD	DTBA	Total
KNT	Domestic	144	43	187										144	43	187
	Paternity	15	4	19										15	4	19
<b>KNT Total</b>		<b>159</b>	<b>47</b>	<b>206</b>										<b>159</b>	<b>47</b>	<b>206</b>
SEA	Domestic	155	59	214										155	59	214
	Paternity	14	6	20										14	6	20
<b>SEA Total</b>		<b>169</b>	<b>65</b>	<b>234</b>										<b>169</b>	<b>65</b>	<b>234</b>
<b>KNT/SEA Total</b>		<b>328</b>	<b>112</b>	<b>440</b>										<b>328</b>	<b>112</b>	<b>440</b>

\* DMOD = parenting plan modification track; DTBA = support modification track.

Table 2. Number of Cases Resolved and Resolution Category (%)

## King County Superior Court

Reporting Category	Q2/12	Q3/12	Q4/12	Q1/13	Q2/13	Q3/13	Q4/13	Q1/14*
<b>Total Resolutions (excl. "Matters Filed with Clerk")</b>	<b>15255</b>	<b>13962</b>	<b>13730</b>	<b>14048</b>	<b>14104</b>	<b>13836</b>	<b>13052</b>	<b>13126</b>
<b>Criminal (excl. RALJ): # Resolved</b>	<b>1477</b>	<b>1365</b>	<b>1423</b>	<b>1539</b>	<b>1388</b>	<b>1524</b>	<b>1364</b>	<b>1475</b>
Resolved by Jury Trial	3.5%	3.0%	3.1%	3.8%	4.3%	3.3%	3.7%	3.9%
Resolved by Non-Jury Trial	0.6%	0.7%	1.1%	1.5%	1.2%	1.8%	1.2%	1.0%
Resolved by Guilty Plea	80.0%	79.9%	82.3%	78.8%	79.7%	79.9%	78.5%	78.9%
Dismissal	15.8%	16.0%	13.2%	15.4%	14.7%	14.8%	16.3%	16.0%
Others	0.1%	0.4%	0.4%	0.5%	0.1%	0.3%	0.3%	0.3%
<b>General Civil: # Resolved</b>	<b>7295</b>	<b>6473</b>	<b>6274</b>	<b>6503</b>	<b>6402</b>	<b>6054</b>	<b>5478</b>	<b>5751</b>
Resolved by Jury Trial	0.6%	0.5%	0.4%	0.5%	0.6%	0.6%	0.5%	0.4%
Resolved by Non-Jury Trial	0.3%	0.4%	0.4%	0.5%	0.4%	0.3%	0.4%	0.6%
Summary Judgment	2.3%	1.9%	1.8%	1.7%	1.8%	1.7%	1.9%	1.8%
Default/ Uncontested	44.5%	40.5%	41.5%	41.3%	41.9%	39.9%	36.6%	35.8%
Arbitration	2.1%	2.1%	2.6%	2.6%	2.4%	2.7%	2.6%	2.4%
Settlement/Dismissal	46.6%	50.9%	50.0%	49.8%	49.3%	51.3%	54.5%	51.5%
Closure by Clerk	2.9%	3.0%	2.2%	2.9%	2.5%	2.3%	2.5%	3.0%
Others	0.9%	0.8%	1.1%	0.9%	1.1%	1.2%	1.1%	4.5%
<b>Asbestos Cases (civil): # Resolved</b>	<b>11</b>	<b>36</b>	<b>31</b>	<b>15</b>	<b>20</b>	<b>9</b>	<b>4</b>	<b>26</b>
Resolved by Jury Trial	0.0%	0.0%	0.0%	6.7%	5.0%	0.0%	0.0%	0.0%
Resolved by Non-Jury Trial	0.0%	0.0%	0.0%	0.0%	0.0%	0.0%	0.0%	0.0%
Summary Judgment	0.0%	0.0%	0.0%	0.0%	5.0%	0.0%	0.0%	3.9%
Default/ Uncontested	0.0%	2.8%	0.0%	6.7%	5.0%	22.2%	0.0%	7.7%
Arbitration	0.0%	0.0%	0.0%	0.0%	0.0%	0.0%	0.0%	0.0%
Settlement/Dismissal	100%	16.7%	100%	53.3%	60.0%	77.8%	100%	80.8%
Closure by Clerk	0.0%	80.6%	0.0%	33.3%	20.0%	0.0%	0.0%	0.0%
Others	0.0%	0.0%	0.0%	0.0%	5.0%	0.0%	0.0%	0.0%
<b>Domestic: # Resolved</b>	<b>1947</b>	<b>1929</b>	<b>2081</b>	<b>1928</b>	<b>1965</b>	<b>2055</b>	<b>2023</b>	<b>1933</b>
Resolved by Trial	4.3%	4.2%	4.9%	4.5%	4.5%	3.8%	4.0%	4.2%
Default/ Uncontested	7.7%	9.5%	10.0%	9.1%	8.3%	11.1%	8.7%	8.6%
Settlement /Dismissal	86.4%	84.8%	84.5%	84.9%	86.3%	84.7%	86.4%	86.3%
Closure by Clerk	1.3%	1.1%	0.5%	1.2%	0.5%	0.3%	0.4%	0.5%
Others	0.3%	0.4%	0.0%	0.4%	0.4%	0.1%	0.6%	0.5%
<b>Probate: # Resolved</b>	<b>1438</b>	<b>1266</b>	<b>1336</b>	<b>1547</b>	<b>1580</b>	<b>1319</b>	<b>1333</b>	<b>1441</b>
Personal Rep. Appointed	72.3%	70.5%	72.8%	72.9%	66.3%	70.7%	74.6%	73.6%
Dismissal	2.5%	2.0%	2.0%	1.8%	5.0%	2.4%	1.5%	1.5%
Closure by Clerk	0.1%	0.0%	0.0%	0.0%	3.5%	0.0%	0.0%	0.0%
Others	25.0%	27.6%	25.3%	25.4%	25.2%	27.0%	23.9%	24.8%
<b>Guardianship: # Resolved</b>	<b>246</b>	<b>222</b>	<b>219</b>	<b>176</b>	<b>212</b>	<b>232</b>	<b>218</b>	<b>214</b>
Guardian Appointed	51.6%	62.2%	58.0%	50.0%	49.1%	54.7%	52.3%	53.3%
Dismissal	48.0%	36.9%	42.0%	50.0%	50.0%	44.8%	47.7%	46.3%
Closure by Clerk	0.0%	0.0%	0.0%	0.0%	0.0%	0.0%	0.0%	0.0%
Others	0.4%	0.9%	0.0%	0.0%	0.9%	0.4%	0.0%	0.5%
<b>Adoption: # Resolved</b>	<b>118</b>	<b>113</b>	<b>190</b>	<b>95</b>	<b>123</b>	<b>146</b>	<b>155</b>	<b>87</b>
Resolved by Trial	0.9%	0.0%	0.0%	0.0%	0.8%	0.7%	0.0%	0.0%
Uncontested	0.9%	3.5%	0.0%	9.5%	1.6%	3.4%	0.7%	10.3%
Settlement /Dismissal	96.6%	96.5%	100%	90.5%	95.9%	95.2%	98.7%	88.5%
Closure by Clerk	1.7%	0.0%	0.0%	0.0%	1.6%	0.0%	0.0%	1.2%
Others	0.0%	0.0%	0.0%	0.0%	0.0%	0.7%	0.7%	0.0%
<b>Paternity: # Resolved</b>	<b>285</b>	<b>275</b>	<b>230</b>	<b>265</b>	<b>247</b>	<b>242</b>	<b>234</b>	<b>264</b>
Resolved by Trial	0.0%	0.7%	0.4%	0.4%	0.8%	0.8%	1.7%	0.4%
Summary Judgment	34.7%	40.4%	49.1%	48.3%	51.4%	42.2%	49.2%	48.9%
Default/ Uncontested	29.8%	25.1%	25.2%	22.6%	23.5%	33.1%	23.9%	25.8%
Settlement/Dismissal	34.7%	33.8%	25.2%	28.7%	23.9%	24.0%	25.2%	24.6%
Closure by Clerk	0.7%	0.0%	0.0%	0.0%	0.4%	0.0%	0.0%	0.4%
Others	0.0%	0.0%	0.0%	0.0%	0.0%	0.0%	0.0%	0.0%

Reflecting all documents received by 04/15/2014.

Table 2 (cont.). Number of Cases Resolved and Resolution Category (%)

## King County Superior Court

Reporting Category	Q2/12	Q3/12	Q4/12	Q1/13	Q2/13	Q3/13	Q4/13	Q1/14*
<b>Mental Illness: # Resolved</b>	<b>1078</b>	<b>996</b>	<b>844</b>	<b>754</b>	<b>893</b>	<b>1113</b>	<b>1125</b>	<b>859</b>
Court Decision to Commit	57.7%	62.0%	68.3%	70.9%	70.1%	55.0%	55.2%	66.5%
Closed by Court	0.0%	0.0%	0.0%	0.0%	0.0%	0.0%	0.0%	0.2%
Dismissal	12.8%	18.8%	24.5%	22.2%	21.3%	21.5%	20.5%	21.0%
Others	29.5%	19.3%	7.2%	7.0%	8.6%	23.5%	24.3%	12.3%
<b>Juv. DEP/TER: # Resolved</b>	<b>259</b>	<b>273</b>	<b>282</b>	<b>294</b>	<b>411</b>	<b>251</b>	<b>231</b>	<b>298</b>
Finding of Dependency	69.9%	62.3%	68.4%	69.7%	76.6%	74.5%	65.4%	72.2%
Dismissal	29.7%	37.7%	30.5%	29.9%	21.2%	23.5%	32.9%	27.2%
Others	0.4%	0.0%	1.1%	0.3%	2.2%	2.0%	1.7%	0.7%
<b>Juv. ARY/CHINS/OTHER:# Resolved</b>	<b>77</b>	<b>56</b>	<b>42</b>	<b>62</b>	<b>69</b>	<b>45</b>	<b>50</b>	<b>68</b>
Approve of Petition	32.5%	51.8%	50.0%	45.2%	60.9%	60.0%	56.0%	64.7%
Dismissal	66.2%	48.2%	50.0%	54.8%	37.7%	37.8%	42.0%	35.3%
Others	1.3%	0.0%	0.0%	0.0%	1.5%	2.2%	2.0%	0.0%
<b>Juvenile Truancy: # Resolved</b>	<b>347</b>	<b>328</b>	<b>192</b>	<b>302</b>	<b>226</b>	<b>296</b>	<b>336</b>	<b>189</b>
Approve of Petition	15.9%	0.0%	18.8%	36.4%	40.3%	0.3%	13.4%	48.7%
Dismissal	83.9%	100%	81.3%	63.6%	59.7%	99.7%	86.6%	51.3%
Others	0.3%	0.0%	0.0%	0.0%	0.0%	0.0%	0.0%	0.0%
<b>Juvenile Offender: # Resolved</b>	<b>619</b>	<b>561</b>	<b>522</b>	<b>511</b>	<b>501</b>	<b>491</b>	<b>441</b>	<b>465</b>
Resolved by Trial (Fact Finding)	5.3%	3.9%	6.3%	12.0%	11.2%	6.1%	7.5%	3.9%
Resolved by Guilty Plea	42.8%	42.1%	40.8%	40.9%	36.7%	35.2%	39.5%	41.3%
Dismissal	31.7%	35.8%	37.9%	27.2%	28.5%	41.6%	32.4%	35.5%
Deferred Disposition (DDSP)	17.1%	15.3%	12.8%	16.6%	16.6%	14.3%	16.1%	16.8%
Others (including Deferred Prosecution)	3.1%	3.9%	2.1%	3.3%	7.0%	0.0%	4.5%	2.6%
<b>Criminal RALJ: # Resolved</b>	<b>46</b>	<b>46</b>	<b>51</b>	<b>38</b>	<b>45</b>	<b>46</b>	<b>54</b>	<b>41</b>
RALJ Decision	76.1%	56.5%	51.0%	60.5%	66.7%	58.7%	63.0%	73.2%
Dismissal	21.7%	34.8%	29.4%	34.2%	31.1%	39.1%	33.3%	24.4%
Others	2.2%	8.7%	19.6%	5.3%	2.2%	2.2%	3.7%	2.4%
<b>Civil RALJ: # Resolved</b>	<b>12</b>	<b>23</b>	<b>17</b>	<b>19</b>	<b>22</b>	<b>13</b>	<b>6</b>	<b>15</b>
RALJ Decision	41.7%	52.2%	30.8%	15.8%	50.0%	61.5%	50.0%	40.0%
Dismissal	50.0%	34.8%	69.2%	84.2%	50.0%	38.5%	50.0%	46.7%
Others	8.3%	13.0%	0.0%	0.0%	0.0%	0.0%	0.0%	13.3%

\* Reflecting all documents received by 04/15/2014.

Chart 2-A. Quarterly Resolutions  
Total Judicial Cases Only ("Matters Filed with Clerk" excluded)

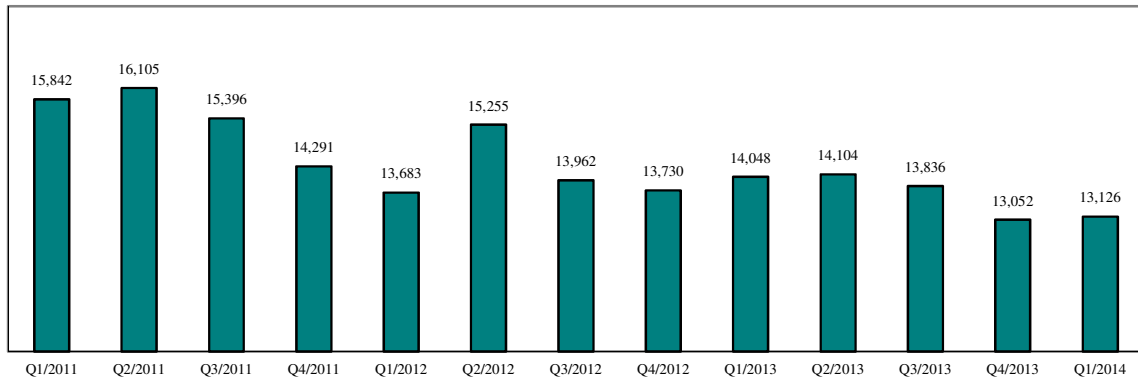
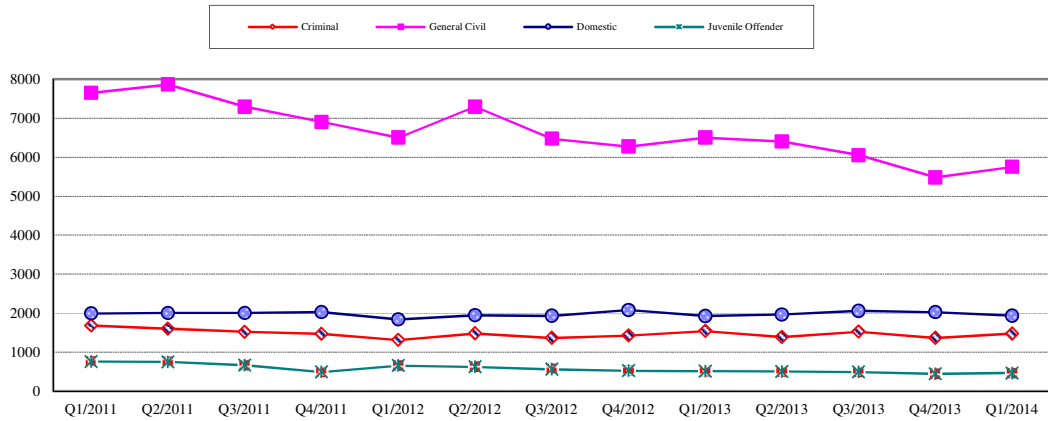


Chart 2-B. Quarterly Resolutions: Criminal, Dmestic, General Civil and Juvenile Offender Cases Only



\* Note: "General Civil" is specifically defined in this report. The category of "General Civil" does **not** include the following case types: domestic, probate, guardianship, adoption, paternity, mental illness, juvenile cases (dependency, at-risk youth, child-in-need of service), civil RALJ, and tax filings that don't require judicial resources ("matters filed with clerk"). Please check the Appendix for the cause codes in the "General Civil" category.

Table 3. Age of Resolved Cases  
King County Superior Court

Reporting Category	Age of Cases at Resolution							
	Q2/12	Q3/12	Q4/12	Q1/13	Q2/13	Q3/13	Q4/13	Q1/14*
<b>Criminal (excl. RALJ)</b>								
<b>Age (days)</b>								
50% Cases Resolved by Day	98	106	112	120	110	116	117	118
90% Cases Resolved by Day	370	373	309	346	398	371	359	378
<b>Comparison with Court Standard of</b>								
90% in 4 months	58%	56%	54%	50%	54%	52%	51%	51%
98% in 6 months	73%	72%	73%	69%	69%	69%	69%	69%
100% in 9 months	84%	85%	87%	84%	82%	84%	84%	83%
<b>General Civil <sup>(1)</sup></b>								
<b>Age (days)</b>								
50% Cases Resolved by Day	26	27	29	28	27	29	38	42
90% Cases Resolved by Day	498	514	504	512	515	496	484	520
<b>Comparison with Court Standard of</b>								
90% in 12 months	85%	84%	83%	80%	83%	83%	83%	81%
98% in 18 months	93%	92%	92%	92%	92%	93%	93%	91%
100% in 24 months	98%	97%	98%	98%	97%	97%	97%	96%
<b>Domestic</b>								
<b>Age (days)</b>								
50% Cases Resolved by Day	175	169	170	181	164	150	155	175
90% Cases Resolved by Day	378	385	391	387	380	371	379	373
<b>Comparison with Court Standard of</b>								
90% in 8 months	64%	64%	64%	63%	66%	67%	66%	62%
98% in 10 months	73%	72%	73%	71%	75%	84%	75%	73%
100% in 14 months	92%	93%	97%	92%	92%	94%	94%	94%
<b>Probate</b>								
<b>Age (days)</b>								
50% Cases Resolved by Day	0	0	0	0	0	0	0	0
90% Cases Resolved by Day	6	9	4	4	311	7	6	5
<b>Comparison with Court Standard of</b>								
90% in 8 months	98%	99%	98%	98%	89%	98%	99%	99%
98% in 18 months	99%	100%	99%	100%	91%	100%	100%	100%
100% in 36 months	100%	100%	99%	100%	94%	100%	100%	100%
<b>Guardianship</b>								
<b>Age (days)</b>								
50% Cases Resolved by Day	57	65	57	61	59	63	63	66
90% Cases Resolved by Day	207	158	166	259	342	247	172	223
<b>Comparison with Court Standard of</b>								
90% in 8 months	92%	90%	93%	90%	87%	90%	91%	93%
98% in 18 months	97%	97%	98%	94%	97%	97%	100%	100%
100% in 36 months	99%	99%	100%	99%	99%	98%	100%	100%
<b>Adoption</b>								
<b>Age (days)</b>								
50% Cases Resolved by Day	89	81	52	93	108	65	49	45
90% Cases Resolved by Day	270	253	206	700	863	591	215	185
<b>Comparison with Court Standard of</b>								
90% in 8 months	64%	88%	92%	69%	74%	74%	92%	92%
98% in 10 months	71%	93%	93%	75%	76%	75%	95%	92%
100% in 14 months	98%	97%	94%	81%	77%	78%	95%	95%
<b>Paternity</b>								
<b>Age (days)</b>								
50% Cases Resolved by Day	111	152	155	173	180	165	181	190
90% Cases Resolved by Day	285	271	272	273	296	271	300	273
<b>Comparison with Court Standard of</b>								
90% in 8 months	87%	82%	84%	80%	79%	63%	74%	76%
98% in 10 months	93%	93%	93%	93%	91%	76%	91%	95%
100% in 14 months	98%	99%	98%	100%	98%	98%	97%	98%



Table 3 (cont.) Age of Resolved Cases

King County Superior Court

Reporting Category	Age of Cases at Resolution							
	Q2/12	Q3/12	Q4/12	Q1/13	Q2/13	Q3/13	Q4/13	Q1/14*
<b>Mental Illness**</b>								
Age (days)								
50% Cases Resolved by Day	4	3	3	2	3	4	4	3
90% Cases Resolved by Day	1553	182	10	9	9	333	287	10
<b>Juvenile DEP/TER</b>								
Age (days)								
50% Cases Resolved by Day	98	94	104	93	188	84	101	141
90% Cases Resolved by Day	391	432	839	487	821	218	296	446
<b>Comparison with Court Standard of</b>								
90% in 8 months	84%	80%	81%	77%	56%	93%	89%	80%
98% in 10 months	88%	83%	84%	83%	59%	94%	92%	83%
100% in 14 months	90%	90%	86%	88%	72%	95%	94%	87%
<b>Juv ARY/CHINS/OTHER</b>								
Age (days)								
50% Cases Resolved by Day	28	44	73	55	41	39	44	48
90% Cases Resolved by Day	232	245	282	238	692	235	112	1058
<b>Comparison with Court Standard of</b>								
90% in 8 months	82%	88%	85%	90%	82%	91%	94%	83%
98% in 10 months	94%	99%	89%	93%	85%	91%	94%	86%
100% in 14 months	99%	100%	95%	98%	87%	96%	98%	86%
<b>Juvenile Truancy**</b>								
Age (days)								
50% Cases Resolved by Day	22	68	27	32	22	25	67	39
90% Cases Resolved by Day	65	158	198	85	60	100	177	150
<b>Juvenile Offender</b>								
Age (days)								
50% Cases Resolved by Day	64	69	73	83	73	78	77	71
90% Cases Resolved by Day	173	175	258	221	243	223	217	195
<b>Comparison with Court Standard of</b>								
90% in 4 months	82%	78%	75%	69%	70%	69%	71%	76%
98% in 6 months	90%	85%	86%	85%	81%	84%	83%	88%
100% in 9 months	94%	95%	93%	94%	91%	93%	94%	95%
<b>Criminal RALJ</b>								
Age (days)								
50% Cases Resolved by Day	267	258	254	258	283	275	286	264
90% Cases Resolved by Day	428	603	382	413	433	447	467	371
<b>Civil RALJ</b>								
Age (days)								
50% Cases Resolved by Day	179	234	202	171	266	165	176	157
90% Cases Resolved by Day	364	1018	1030	704	373	400	199	246

\* Reflecting all documents received by 04/15/2014.

\*\* No standard yet.

Table 4. Active Pending Caseload Statistics  
King County Superior Court

Reporting Category	Q2/12	Q3/12	Q4/12	Q1/13	Q2/13	Q3/13	Q4/13	Q1/14*
<b>Total (incl. RALJ)</b>								
Previous Pending (+)	20235	20098	19729	19396	19221	19064	18930	18749
New Filing (+)	14430	13080	13064	13636	13487	13092	12510	12743
Resolved (-)	15255	13962	13730	14048	14104	13836	13052	13126
<b>End Pending</b>	<b>20098</b>	<b>19729</b>	<b>19396</b>	<b>19221</b>	<b>19064</b>	<b>18930</b>	<b>18794</b>	<b>18514</b>
<b>Resolution Rate**</b>	<b>1.057</b>	<b>1.067</b>	<b>1.051</b>	<b>1.030</b>	<b>1.048</b>	<b>1.057</b>	<b>1.043</b>	<b>1.023</b>
<b>Criminal (excl. RALJ)</b>								
Previous Pending (+)	2715	2798	2860	2780	2673	2828	2752	2865
New Filing (+)	1585	1513	1305	1490	1495	1460	1599	1587
Resolved (-)	1477	1365	1423	1539	1388	1524	1364	1475
<b>End Pending</b>	<b>2798</b>	<b>2860</b>	<b>2780</b>	<b>2673</b>	<b>2828</b>	<b>2752</b>	<b>2865</b>	<b>2883</b>
<b>Resolution Rate**</b>	<b>0.932</b>	<b>0.902</b>	<b>1.090</b>	<b>1.033</b>	<b>0.928</b>	<b>1.044</b>	<b>0.853</b>	<b>0.929</b>
<b>General Civil</b>								
Previous Pending (+)	9243	8912	8611	8431	8112	7914	8003	8003
New Filing (+)	6576	5844	5650	5834	5827	5701	4974	5122
Resolved (-)	7295	6473	6274	6503	6402	6054	5478	5751
<b>End Pending</b>	<b>8912</b>	<b>8611</b>	<b>8431</b>	<b>8112</b>	<b>7914</b>	<b>8005</b>	<b>7844</b>	<b>7518</b>
<b>Resolution Rate**</b>	<b>1.109</b>	<b>1.108</b>	<b>1.110</b>	<b>1.115</b>	<b>1.099</b>	<b>1.062</b>	<b>1.101</b>	<b>1.123</b>
<b>Asbestos Cases (civil) <sup>(1)</sup></b>								
Previous Pending (+)	81	81	71	76	81	80	81	92
New Filing (+)	9	8	7	19	18	10	14	9
Resolved (-)	11	36	31	15	20	9	4	26
<b>End Pending</b>	<b>81</b>	<b>71</b>	<b>76</b>	<b>81</b>	<b>80</b>	<b>81</b>	<b>92</b>	<b>77</b>
<b>Resolution Rate**</b>	<b>1.212</b>	<b>4.500</b>	<b>4.429</b>	<b>0.789</b>	<b>1.111</b>	<b>0.900</b>	<b>0.286</b>	<b>2.889</b>
<b>Domestic</b>								
Previous Pending (+)	4556	4544	4637	4458	4562	4580	4650	4486
New Filing (+)	1913	1982	1818	2011	1979	2103	1803	1903
Resolved (-)	1947	1929	2081	1928	1965	2055	2023	1933
<b>End Pending</b>	<b>4544</b>	<b>4637</b>	<b>4458</b>	<b>4562</b>	<b>4580</b>	<b>4650</b>	<b>4486</b>	<b>4499</b>
<b>Resolution Rate**</b>	<b>1.018</b>	<b>0.973</b>	<b>1.145</b>	<b>0.959</b>	<b>0.998</b>	<b>0.977</b>	<b>1.122</b>	<b>1.016</b>
<b>Probate</b>								
Previous Pending (+)	579	631	655	615	696	588	650	768
New Filing (+)	1453	1262	1365	1606	1444	1352	1429	1501
Resolved (-)	1438	1266	1336	1547	1580	1319	1333	1441
<b>End Pending</b>	<b>631</b>	<b>655</b>	<b>615</b>	<b>696</b>	<b>588</b>	<b>650</b>	<b>768</b>	<b>850</b>
<b>Resolution Rate**</b>	<b>0.990</b>	<b>1.003</b>	<b>0.979</b>	<b>0.963</b>	<b>1.094</b>	<b>0.976</b>	<b>0.933</b>	<b>0.960</b>
<b>Guardianship</b>								
Previous Pending (+)	276	277	274	248	279	302	310	303
New Filing (+)	247	216	215	210	234	237	209	245
Resolved (-)	246	222	219	176	212	232	218	214
<b>End Pending</b>	<b>277</b>	<b>274</b>	<b>248</b>	<b>279</b>	<b>302</b>	<b>310</b>	<b>303</b>	<b>334</b>
<b>Resolution Rate**</b>	<b>0.996</b>	<b>1.028</b>	<b>1.019</b>	<b>0.838</b>	<b>0.906</b>	<b>0.979</b>	<b>1.043</b>	<b>0.873</b>
<b>Adoption</b>								
Previous Pending (+)	226	230	240	199	222	200	187	187
New Filing (+)	122	120	149	115	101	133	134	121
Resolved (-)	118	113	190	95	123	146	155	87
<b>End Pending</b>	<b>230</b>	<b>240</b>	<b>199</b>	<b>222</b>	<b>200</b>	<b>187</b>	<b>166</b>	<b>200</b>
<b>Resolution Rate**</b>	<b>0.967</b>	<b>0.942</b>	<b>1.275</b>	<b>0.826</b>	<b>1.218</b>	<b>1.098</b>	<b>1.157</b>	<b>0.719</b>
<b>Paternity</b>								
Previous Pending (+)	456	468	448	500	479	506	500	446
New Filing (+)	299	255	273	246	273	235	177	197
Resolved (-)	285	275	230	265	247	242	234	264
<b>End Pending</b>	<b>468</b>	<b>448</b>	<b>500</b>	<b>479</b>	<b>506</b>	<b>500</b>	<b>446</b>	<b>384</b>
<b>Resolution Rate**</b>	<b>0.953</b>	<b>1.078</b>	<b>0.842</b>	<b>1.077</b>	<b>0.905</b>	<b>1.030</b>	<b>1.322</b>	<b>1.340</b>

\* Reflecting all documents received by 04/15/2014.

\*\* A value of "Resolution Rate" less than one indicates the resolution pace is slower than the filing pace.

Table 4 (cont.) Active Pending Caseload Statistics  
King County Superior Court

Reporting Category		Q2/12	Q3/12	Q4/12	Q1/13	Q2/13	Q3/13	Q4/13	Q1/14*
<b>Mental Illness</b>									
Previous Pending	(+)	540	350	281	311	378	390	294	104
New Filing	(+)	883	926	894	820	904	1019	935	876
Resolved	(-)	1078	996	844	754	893	1113	1125	859
<b>End Pending</b>		<b>350</b>	<b>281</b>	<b>311</b>	<b>378</b>	<b>390</b>	<b>294</b>	<b>104</b>	<b>119</b>
<b>Resolution Rate**</b>		<b>1.221</b>	<b>1.076</b>	<b>0.944</b>	<b>0.920</b>	<b>0.988</b>	<b>1.092</b>	<b>1.203</b>	<b>0.981</b>
<b>Juvenile DEP/TER</b>									
Previous Pending	(+)	503	534	523	516	492	419	447	507
New Filing	(+)	271	235	289	246	302	273	282	302
Resolved	(-)	259	273	282	294	411	251	231	298
<b>End Pending</b>		<b>534</b>	<b>523</b>	<b>516</b>	<b>492</b>	<b>419</b>	<b>447</b>	<b>507</b>	<b>537</b>
<b>Resolution Rate**</b>		<b>0.956</b>	<b>1.162</b>	<b>0.976</b>	<b>1.195</b>	<b>1.361</b>	<b>0.920</b>	<b>0.819</b>	<b>0.987</b>
<b>Juv ARY/CHINS/OTHER</b>									
Previous Pending	(+)	91	98	89	104	101	75	86	94
New Filing	(+)	77	43	52	55	37	51	58	76
Resolved	(-)	77	56	42	62	69	45	50	68
<b>End Pending</b>		<b>98</b>	<b>89</b>	<b>104</b>	<b>101</b>	<b>75</b>	<b>86</b>	<b>94</b>	<b>105</b>
<b>Resolution Rate**</b>		<b>1.000</b>	<b>1.302</b>	<b>0.808</b>	<b>1.127</b>	<b>1.865</b>	<b>0.880</b>	<b>0.862</b>	<b>0.895</b>
<b>Juvenile Truancy</b>									
Previous Pending	(+)	145	364	208	308	382	467	210	326
New Filing	(+)	355	19	446	533	361	10	331	390
Resolved	(-)	347	328	192	302	226	296	336	189
<b>End Pending</b>		<b>364</b>	<b>208</b>	<b>308</b>	<b>382</b>	<b>467</b>	<b>210</b>	<b>326</b>	<b>315</b>
<b>Resolution Rate**</b>		<b>0.977</b>	<b>17.263</b>	<b>0.430</b>	<b>0.567</b>	<b>0.626</b>	<b>29.600</b>	<b>1.015</b>	<b>0.485</b>
<b>Juvenile Offender</b>									
Previous Pending	(+)	653	631	655	663	588	546	587	612
New Filing	(+)	576	595	532	405	452	449	497	363
Resolved	(-)	619	561	522	511	501	491	441	465
<b>End Pending</b>		<b>631</b>	<b>655</b>	<b>663</b>	<b>588</b>	<b>546</b>	<b>587</b>	<b>612</b>	<b>518</b>
<b>Resolution Rate**</b>		<b>1.075</b>	<b>0.943</b>	<b>0.981</b>	<b>1.262</b>	<b>1.108</b>	<b>1.094</b>	<b>0.887</b>	<b>1.281</b>
<b>Criminal RALJ</b>									
Previous Pending	(+)	132	136	134	142	144	147	147	143
New Filing	(+)	47	43	55	40	48	44	48	43
Resolved	(-)	46	46	51	38	45	46	54	41
<b>End Pending</b>		<b>136</b>	<b>134</b>	<b>142</b>	<b>144</b>	<b>147</b>	<b>147</b>	<b>143</b>	<b>146</b>
<b>Resolution Rate**</b>		<b>0.979</b>	<b>1.070</b>	<b>0.927</b>	<b>0.950</b>	<b>0.938</b>	<b>1.045</b>	<b>1.125</b>	<b>0.953</b>
<b>Civil RALJ</b>									
Previous Pending	(+)	39	44	43	45	32	22	24	38
New Filing	(+)	17	19	14	6	12	15	20	8
Resolved	(-)	12	23	13	19	22	13	6	15
<b>End Pending</b>		<b>44</b>	<b>43</b>	<b>45</b>	<b>32</b>	<b>22</b>	<b>24</b>	<b>38</b>	<b>29</b>
<b>Resolution Rate**</b>		<b>0.706</b>	<b>1.211</b>	<b>0.929</b>	<b>3.167</b>	<b>1.833</b>	<b>0.867</b>	<b>0.300</b>	<b>1.875</b>

\* Reflecting all documents received by 04/15/2014.

\*\* A value of "Resolution Rate" less than one indicates the resolution pace is slower than the filing pace.

Chart 4-A. Active Pending Caseload at Quarter End  
Total Judicial Cases Only ("Matters Filed with Clerk" excluded)

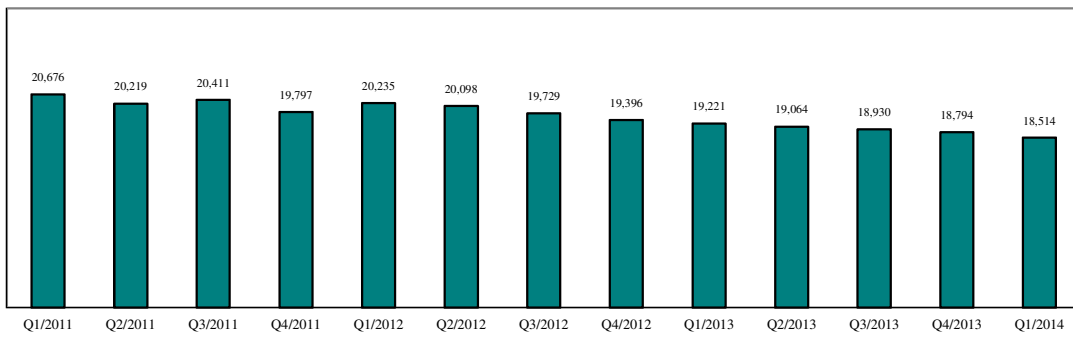


Chart 4-B. Active Pending Caseload at Quarter End: Domestic and General Civil Cases Only

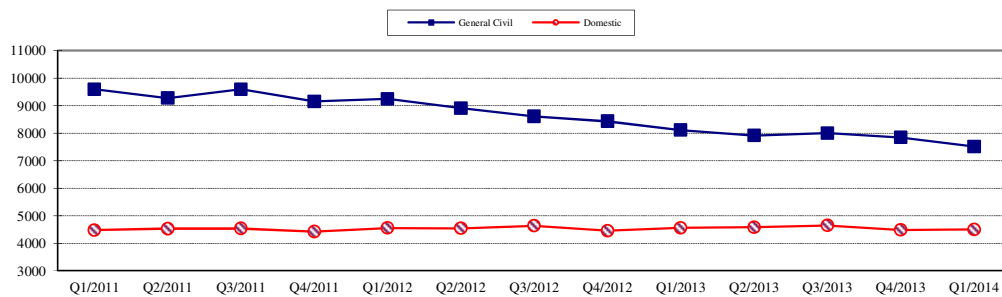
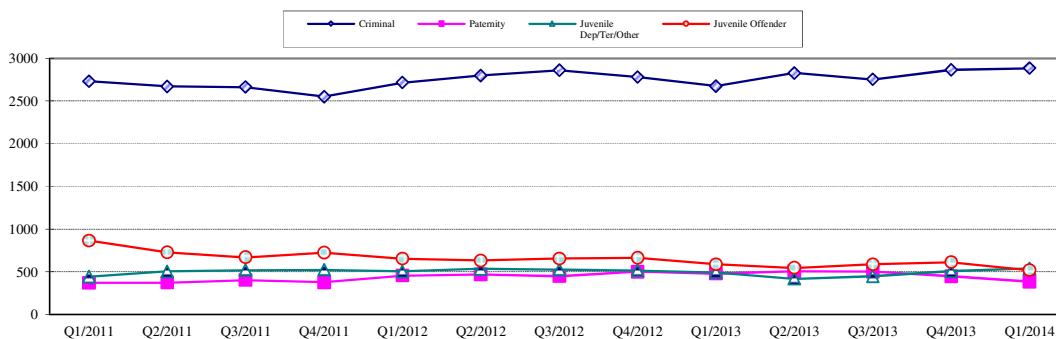


Chart 4-C. Active Pending Caseload at Quarter End:  
Criminal, Juvenile Offender, Paternity and Dependency Cases Only



\* Note: "General Civil" is specifically defined in this report. The category of "General Civil" does **not** include the following case types: domestic, probate, guardianship, adoption, paternity, mental illness, juvenile cases (dependency, at-risk youth, child-in-need of service), civil RALJ, and tax filings that don't require judicial resources ("matters filed with clerk"). Please check the Appendix for the cause codes in the "General Civil" category.

Table 5. Age of Pending Cases

King County Superior Court

Reporting Category	Age of Pending Cases and # of Cases in Each Age Interval							
	Q2/12	Q3/12	Q4/12	Q1/13	Q2/13	Q3/13	Q4/13	Q1/14*
<b>Criminal (excl. RALJ): # of Cases</b>	<b>2798</b>	<b>2860</b>	<b>2780</b>	<b>2673</b>	<b>2828</b>	<b>2752</b>	<b>2865</b>	<b>2883</b>
<b>Age (days)</b>								
Median (50 percentile)	104	110	126	116	111	117	111	110
95 percentile	691	692	706	695	703	745	771	750
<b># of Cases in Age Interval</b>								
0 - 60 days (0 - 2 months)	928	844	760	833	889	861	867	966
61 - 120 days (3 - 4 months)	619	676	590	546	599	568	650	581
121 - 180 days (5 - 6 months)	362	405	422	315	382	373	366	378
181 - 270 days (7 - 9 months)	269	330	363	324	296	346	333	328
> 270 days (> 9 months)	620	605	645	655	662	604	649	630
<b>General Civil: # of Cases</b>	<b>8912</b>	<b>8611</b>	<b>8431</b>	<b>8112</b>	<b>7914</b>	<b>8005</b>	<b>7844</b>	<b>7518</b>
<b>Age (days)</b>								
Median (50 percentile)	172	188	189	179	168	165	174	172
95 percentile	594	601	641	637	633	634	658	594
<b># of Cases in Age Interval</b>								
0 - 120 days (0 - 4 months)	3538	3148	3108	3112	3212	3230	3018	2984
121 - 240 days (5 - 8 months)	1846	2020	1804	1710	1606	1829	1796	1965
241 - 360 days (9 - 12 months)	1366	1327	1332	1238	1216	1151	1250	1239
361 - 540 days (13 - 18 months)	1524	1473	1410	1333	1235	1138	1083	1089
541 - 720 days (19 - 24 months)	422	405	487	419	373	357	378	305
> 720 days (> 24 months)	216	238	290	300	272	300	319	206
<b>Asbestos Cases (civil)<sup>(1)</sup> : # of Cases</b>	<b>81</b>	<b>71</b>	<b>76</b>	<b>81</b>	<b>80</b>	<b>81</b>	<b>92</b>	<b>77</b>
<b>Age (days)</b>								
Median (50 percentile)	563	410	524	388	280	264	296	351
95 percentile	1984	1747	3168	3244	3342	2441	2533	778
<b># of Cases in Age Interval</b>								
0 - 120 days (0 - 4 months)	12	11	7	20	26	17	18	10
121 - 240 days (5 - 8 months)	5	14	10	10	10	21	13	15
241 - 360 days (9 - 12 months)	12	8	11	8	12	9	23	14
361 - 540 days (13 - 18 months)	11	11	11	11	11	13	14	25
541 - 720 days (19 - 24 months)	7	6	7	6	2	5	8	7
> 720 days (> 24 months)	34	21	30	26	19	16	16	6
<b>Domestic: # of Cases</b>	<b>4544</b>	<b>4637</b>	<b>4458</b>	<b>4562</b>	<b>4580</b>	<b>4650</b>	<b>4486</b>	<b>4499</b>
<b>Age (days)</b>								
Median (50 percentile)	118	122	125	117	116	112	127	130
95 percentile	475	516	528	502	508	517	527	557
<b># of Cases in Age Interval</b>								
0 - 120 days (0 - 4 months)	2275	2313	2158	2327	2361	2443	2181	2182
121 - 240 days (5 - 8 months)	1193	1274	1185	1218	1128	1207	1214	1241
241 - 360 days (9 - 12 months)	648	605	675	589	688	568	644	595
361 - 540 days (13 - 18 months)	236	239	227	221	198	215	229	248
> 540 days (> 18 months)	192	206	213	207	205	217	218	233
<b>Probate: # of Cases</b>	<b>631</b>	<b>655</b>	<b>615</b>	<b>696</b>	<b>588</b>	<b>650</b>	<b>768</b>	<b>850</b>
<b>Age (days)</b>								
Median (50 percentile)	608	605	697	559	403	415	382	418
95 percentile	2218	2243	2335	2371	1970	2021	2063	2085
<b># of Cases in Age Interval</b>								
0 - 120 days (0 - 4 months)	122	93	109	144	133	142	192	173
121 - 240 days (5 - 8 months)	70	85	67	74	92	84	93	134
241 - 360 days (9 - 12 months)	65	68	59	64	52	74	83	82
361 - 540 days (13 - 18 months)	51	64	47	60	70	81	89	112
> 540 days (> 18 months)	323	345	333	354	241	269	311	349

Reflecting all documents received by 04/15/2014.

Table 5 (cont.). Age of Pending Cases

King County Superior Court

Reporting Category	Age of Pending Cases and # of Cases in Each Age Interval							
	Q2/12	Q3/12	Q4/12	Q1/13	Q2/13	Q3/13	Q4/13	Q1/14*
<b>Guardianship: # of Cases</b>	<b>277</b>	<b>274</b>	<b>248</b>	<b>279</b>	<b>302</b>	<b>310</b>	<b>303</b>	<b>334</b>
<b>Age (days)</b>								
Median (50 percentile)	62	73	69	73	65	76	103	83
95 percentile	538	605	543	560	474	489	575	580
<b># of Cases in Age Interval</b>								
0 - 120 days (0 - 4 months)	186	169	157	172	199	190	166	198
121 - 240 days (5 - 8 months)	25	37	36	49	41	50	52	43
241 - 360 days (9 - 12 months)	31	22	21	24	30	37	35	30
361 - 540 days (13 - 18 months)	22	28	21	19	18	21	31	43
> 540 days (> 18 months)	13	18	13	15	14	12	19	20
<b>Adoption: # of Cases</b>	<b>230</b>	<b>240</b>	<b>199</b>	<b>222</b>	<b>200</b>	<b>187</b>	<b>166</b>	<b>200</b>
<b>Age (days)</b>								
Median (50 percentile)	145	172	271	216	151	137	155	159
95 percentile	1220	1282	1706	1393	1467	1383	1629	1526
<b># of Cases in Age Interval</b>								
0 - 120 days (0 - 4 months)	107	90	55	88	90	89	72	86
121 - 240 days (5 - 8 months)	35	51	34	30	23	36	23	38
241 - 360 days (9 - 12 months)	18	21	28	24	19	14	20	14
361 - 540 days (13 - 18 months)	25	20	21	27	28	19	19	24
> 540 days (> 18 months)	45	58	61	53	40	29	32	38
<b>Paternity: # of Cases</b>	<b>468</b>	<b>448</b>	<b>500</b>	<b>479</b>	<b>506</b>	<b>500</b>	<b>446</b>	<b>384</b>
<b>Age (days)</b>								
Median (50 percentile)	85	95	92	102	87	106	119	91
95 percentile	263	235	251	294	279	305	279	320
<b># of Cases in Age Interval</b>								
0 - 120 days (0 - 4 months)	320	291	303	262	327	309	230	237
121 - 240 days (5 - 8 months)	116	138	165	176	135	147	179	112
241 - 360 days (9 - 12 months)	25	12	25	32	35	30	24	22
361 - 540 days (13 - 18 months)	5	6	5	8	7	12	11	9
> 540 days (> 18 months)	2	1	2	1	2	2	2	4
<b>Mental Illness: # of Cases</b>	<b>350</b>	<b>281</b>	<b>311</b>	<b>378</b>	<b>390</b>	<b>294</b>	<b>104</b>	<b>119</b>
<b>Age (days)</b>								
Median (50 percentile)	186	97	104	172	256	259	197	70
95 percentile	1334	1512	1595	1595	1680	1877	2196	546
<b># of Cases in Age Interval</b>								
0 - 120 days (0 - 4 months)	150	163	181	137	79	94	47	66
121 - 240 days (5 - 8 months)	42	27	93	134	95	37	12	10
> 240 days (> 8 months)	158	91	37	107	216	163	45	43
<b>Juv DEP/TER: # of Cases</b>	<b>534</b>	<b>523</b>	<b>516</b>	<b>492</b>	<b>419</b>	<b>447</b>	<b>507</b>	<b>537</b>
<b>Age (days)</b>								
Median (50 percentile)	108	150	113	135	66	77	98	88
95 percentile	878	949	1026	1116	558	610	597	593
<b># of Cases in Age Interval</b>								
0 - 60 days (0 - 2 months)	185	137	169	155	197	182	205	213
61 - 120 days (3 - 4 months)	100	93	103	72	103	93	100	109
121 - 180 days (5 - 6 months)	46	67	39	61	37	71	65	72
181 - 270 days (7 - 9 months)	44	46	50	41	33	35	45	59
> 270 days (> 9 months)	159	180	155	163	49	66	92	84
<b>Juv. ARY/CHINS/OTHER: # of Cases</b>	<b>98</b>	<b>89</b>	<b>104</b>	<b>101</b>	<b>75</b>	<b>86</b>	<b>94</b>	<b>105</b>
<b>Age (days)</b>								
Median (50 percentile)	206	333	209	276	577	413	376	162
95 percentile	2313	2405	2444	2534	2678	2717	2809	2850
<b># of Cases in Age Interval</b>								
0 - 60 days (0 - 2 months)	29	19	24	26	13	19	26	29
61 - 120 days (3 - 4 months)	11	10	17	7	5	12	9	15
121 - 180 days (5 - 6 months)	6	7	5	6	4	1	4	11
181 - 270 days (7 - 9 months)	9	6	11	11	5	4	3	5
> 270 days (> 9 months)	43	47	47	51	48	50	52	45

\* Reflecting all documents received by 04/15/2014.

Table 5 (cont.). Age of Pending Cases

King County Superior Court

Reporting Category	Age of Pending Cases and # of Cases in Each Age Interval							
	Q2/12	Q3/12	Q4/12	Q1/13	Q2/13	Q3/13	Q4/13	Q1/14*
<b>Juvenile Truancy: # of Cases</b>	<b>364</b>	<b>208</b>	<b>308</b>	<b>382</b>	<b>467</b>	<b>210</b>	<b>326</b>	<b>315</b>
Age (days)								
Median (50 percentile)	69	158	67	26	68	494	167	154
95 percentile	440	606	588	673	620	971	948	1041
<b># of Cases in Age Interval</b>								
0 - 60 days (0 - 2 months)	128	11	151	226	182	11	139	105
61 - 120 days (3 - 4 months)	193	16	18	19	126	6	21	41
121 - 180 days (5 - 6 months)	1	129	0	17	21	28	3	17
181 - 270 days (7 - 9 months)	11	21	93	1	23	32	20	4
> 270 days (> 9 months)	31	31	46	119	115	133	143	148
<b>Juvenile Offender: # of Cases</b>	<b>631</b>	<b>655</b>	<b>663</b>	<b>588</b>	<b>546</b>	<b>587</b>	<b>612</b>	<b>518</b>
Age (days)								
Median (50 percentile)	59	63	77	80	76	81	74	97
95 percentile	738	800	552	681	508	545	517	581
<b># of Cases in Age Interval</b>								
0 - 60 days (0 - 2 months)	320	312	265	250	219	231	267	180
61 - 120 days (3 - 4 months)	129	155	194	114	145	151	133	121
121 - 180 days (5 - 6 months)	49	51	81	76	51	67	79	63
181 - 270 days (7 - 9 months)	40	25	43	63	55	47	45	59
> 270 days (> 9 months)	93	112	80	85	76	91	88	95
<b>Criminal RALJ: # of Cases</b>	<b>136</b>	<b>134</b>	<b>142</b>	<b>144</b>	<b>147</b>	<b>147</b>	<b>143</b>	<b>146</b>
Age (days)								
Median (50 percentile)	144	139	147	160	157	144	141	147
95 percentile	510	371	400	420	392	384	391	400
<b># of Cases in Age Interval</b>								
0 - 60 days (0 - 2 months)	36	29	27	26	34	34	34	31
61 - 120 days (3 - 4 months)	19	29	30	29	27	24	24	33
121 - 180 days (5 - 6 months)	35	25	28	30	24	30	28	23
181 - 270 days (7 - 9 months)	24	33	35	30	33	28	32	31
> 270 days (> 9 months)	22	18	22	29	29	31	25	28
<b>Civil RALJ: # of Cases</b>	<b>44</b>	<b>43</b>	<b>45</b>	<b>32</b>	<b>22</b>	<b>24</b>	<b>38</b>	<b>29</b>
Age (days)								
Median (50 percentile)	147	102	134	192	88	58	84	111
95 percentile	961	837	431	376	375	231	323	334
<b># of Cases in Age Interval</b>								
0 - 60 days (0 - 2 months)	9	12	8	5	5	12	12	7
61 - 120 days (3 - 4 months)	11	12	11	3	9	5	14	10
121 - 180 days (5 - 6 months)	6	6	13	8	3	5	8	7
181 - 270 days (7 - 9 months)	7	6	7	7	2	1	2	2
> 270 days (> 9 months)	11	7	6	9	3	1	2	3

\* Reflecting all documents received by 04/15/2014.

Table 6. Seattle vs. Regional Justice Center (KNT): Filing, Resolution, Pending Caseload (%)

King County Superior Court

	Q1/13		Q2/13		Q3/13		Q4/13		Q1/14	
	SEA	KNT	SEA	KNT	SEA	KNT	SEA	KNT	SEA	KNT
<b>Filings Total</b> <i>(excl. filings with clerk)</i>	<b>64%</b>	<b>36%</b>	<b>65%</b>	<b>35%</b>	<b>66%</b>	<b>34%</b>	<b>67%</b>	<b>33%</b>	<b>63%</b>	<b>37%</b>
Criminal (excl. RALJ)	55%	45%	55%	45%	60%	40%	60%	40%	52%	48%
General Civil (excl. RALJ)	57%	43%	59%	41%	58%	42%	58%	42%	57%	43%
Domestic	63%	37%	62%	38%	65%	35%	63%	37%	64%	36%
Probate	78%	22%	79%	21%	77%	23%	80%	20%	74%	26%
Guardianship	65%	45%	60%	40%	65%	35%	65%	35%	63%	37%
Adoption	71%	29%	76%	24%	63%	37%	74%	26%	83%	17%
Paternity	52%	48%	45%	55%	49%	51%	41%	59%	49%	51%
Mental Illness	100%	---	100%	---	100%	---	100%	---	100%	---
Juv. DEP/TER/Other	63%	37%	58%	42%	48%	52%	44%	56%	44%	56%
Juvenile ARY/CHINS	46%	54%	41%	59%	37%	63%	52%	48%	46%	54%
Juvenile Truancy	34%	66%	43%	57%	90%	10%	47%	53%	48%	52%
Juvenile Offender	100%	---	100%	---	100%	---	100%	---	100%	---
Criminal RALJ	90%	10%	92%	8%	91%	9%	92%	8%	91%	9%
Civil RALJ	83%	17%	75%	25%	87%	13%	100%	---	100%	---
<b>Resolution Total</b> <i>(excl. filings with clerk)</i>	<b>64%</b>	<b>36%</b>	<b>65%</b>	<b>35%</b>	<b>64%</b>	<b>36%</b>	<b>66%</b>	<b>34%</b>	<b>65%</b>	<b>35%</b>
Criminal (excl. RALJ)	56%	44%	56%	44%	54%	46%	59%	41%	58%	42%
General Civil (excl. RALJ)	57%	43%	59%	41%	57%	43%	59%	41%	60%	40%
Domestic	63%	37%	63%	37%	59%	41%	63%	37%	63%	37%
Probate	78%	22%	79%	21%	76%	24%	79%	21%	73%	27%
Guardianship	60%	40%	60%	40%	63%	37%	60%	40%	68%	32%
Adoption	72%	28%	74%	26%	67%	33%	69%	31%	83%	17%
Paternity	56%	44%	44%	56%	40%	60%	45%	55%	45%	55%
Mental Illness	100%	---	100%	---	100%	---	100%	---	100%	---
Juv. DEP/TER/Other	49%	51%	65%	35%	53%	47%	55%	45%	49%	51%
Juvenile ARY/CHINS	39%	61%	42%	58%	40%	60%	48%	52%	53%	47%
Juvenile Truancy	39%	61%	29%	71%	43%	57%	38%	62%	47%	53%
Juvenile Offender	100%	---	100%	---	100%	---	100%	---	100%	---
Criminal RALJ	87%	13%	98%	2%	96%	4%	91%	9%	93%	7%
Civil RALJ	100%	---	82%	18%	77%	23%	83%	17%	87%	13%
<b>Pending Total</b> <i>(excl. filings with clerk)</i>	<b>66%</b>	<b>34%</b>	<b>65%</b>	<b>35%</b>	<b>67%</b>	<b>33%</b>	<b>66%</b>	<b>34%</b>	<b>65%</b>	<b>35%</b>
Criminal (excl. RALJ)	49%	51%	50%	50%	52%	48%	54%	46%	51%	49%
General Civil (excl. RALJ)	69%	31%	70%	30%	69%	31%	69%	31%	67%	33%
Domestic	61%	39%	60%	40%	63%	37%	62%	38%	62%	38%
Probate	84%	16%	83%	17%	84%	16%	83%	17%	84%	16%
Guardianship	63%	37%	63%	37%	63%	37%	67%	33%	63%	37%
Adoption	76%	24%	77%	23%	75%	25%	80%	20%	80%	20%
Paternity	47%	53%	47%	53%	51%	49%	50%	50%	53%	47%
Mental Illness	100%	---	100%	---	100%	---	100%	---	100%	---
Juv. DEP/TER/Other	69%	31%	61%	39%	56%	44%	49%	51%	45%	55%
Juvenile ARY/CHINS	71%	29%	83%	17%	73%	27%	72%	28%	66%	34%
Juvenile Truancy	55%	45%	53%	47%	70%	30%	60%	40%	62%	38%
Juvenile Offender	100%	---	100%	---	100%	---	100%	---	100%	---
Criminal RALJ	94%	6%	92%	8%	91%	9%	91%	9%	90%	10%
Civil RALJ	81%	19%	77%	23%	83%	17%	92%	8%	97%	3%

Reflecting all documents received by 04/15/2014.



Table 7. Quarterly Utilization of Pro Tem Judges/Commissioners <sup>(1)</sup>

Category	Q3/11	Q4/11	Q1/12	Q2/12	Q3/12	Q4/12	Q1/13	Q2/13	Q3/13	Q4/13	Q1/14
<b>Grand Total</b>	<b>850</b>	<b>1157</b>	<b>869</b>	<b>1173</b>	<b>1304</b>	<b>864</b>	<b>814</b>	<b>1182</b>	<b>1391</b>	<b>2546</b>	<b>1450</b>
<b>Judge FTE Equivalent <sup>(3)</sup></b>	<b>1.9</b>	<b>2.6</b>	<b>1.9</b>	<b>2.6</b>	<b>2.9</b>	<b>1.9</b>	<b>1.8</b>	<b>2.6</b>	<b>3.1</b>	<b>5.7</b>	<b>3.2</b>
<b>By Work Type</b>											
On Trial/Hearings	552	856	367	747	695	302	408	418	561	1069	708
On Preparation	151	250	231	247	320	164	193	273	291	367	474
Other or Unspecified Activity	147	51	272	179	289	397	213	491	539	1121	268
<b>By Case Type</b>											
Criminal	0	14	17	28	38	17	0	19	12	283	123
Civil	487	501	266	543	468	336	395	488	531	927	444
Domestic	220	409	426	424	532	298	311	505	568	1060	656
Probate	0	0	0	0	0	0	0	0	0	0	0
Guardianship	0	0	0	0	0	0	0	0	0	0	0
Adoption	0	0	0	0	0	0	0	0	0	0	0
Paternity	0	0	0	0	0	0	0	0	0	0	0
Mental Illness	0	0	0	0	0	0	0	0	0	0	0
Juv. DEP/TER/Other	79	178	138	137	194	79	85	117	181	157	187
Juvenile Truancy	24	0	0	16	0	30	11	13	29	58	7
Juvenile Offender	39	54	23	25	74	7	12	41	69	61	33
Other or Unspecified	0	0	0	0	0	98	0	0	0	0	0
<b>By Calendar Type</b>											
Criminal Plea	0	14	17	28	25	17	0	19	3	274	123
Criminal Trial	0	0	0	0	13	0	0	0	0	0	0
Civil Trial	83	20	25	70	49	0	83	59	0	120	52
Individual Calendar	0	0	0	0	0	0	0	0	0	0	0
Family Law	227	405	426	432	532	298	323	523	611	1118	659
Ex Parte	312	206	133	255	332	255	157	42	394	556	207
Mental Illness	45	262	108	159	86	88	155	219	124	218	171
Juv. DEP/TER/Other	95	192	131	137	179	75	85	112	181	165	187
Juvenile CHINS/ARY	0	0	0	0	0	0	0	0	0	0	0
Juvenile Truancy	30	0	7	9	15	4	0	0	0	0	4
Juvenile Offender	39	44	23	25	74	30	12	41	78	83	38
Other or Unspecified	21	0	0	0	0	98	0	0	0	0	10
<b>By Reason</b>											
Congestion	159	306	125	174	86	66	155	304	668	1519	342
Medical Coverage	114	134	73	81	199	102	201	153	89	8	91
Vacation	314	603	451	524	571	421	307	324	502	809	563
Training	227	85	191	324	154	84	58	323	129	200	453
Judicial Conference	0	0	0	51	25	0	4	0	0	0	0
Others	36	27	29	15	270	192	89	79	2	10	0

(1) This table is based on the time sheet for compensation

(2) Judge FTE Equivalent = # of hours / [7.5 hours/day \* 20 days/month \* 3 months] = # of hours/450.

*The statistics on Pro Tem judge/commissioner use provide information on the external help the court has obtained in order to handle the workload. The data are collected on the time sheet for compensation (therefore it does not include unpaid volunteering or visiting judges/commissioners). The database on Pro Tem judges/commissioners is managed by the Administrative Services Department (ASD) of King County Superior Court. The Pro Tem total hours presented in this section are provided quarterly by ASD.*

Table 8. Family Law Activity

	3RD QTR, 2012		4TH QTR, 2012		1ST QTR, 2013		2ND QTR, 2013		3RD QTR, 2013		4TH QTR, 2013		1ST QTR, 2014	
	HRGS	ORDS	HRGS	ORDS	HRGS	ORDS	HRGS	ORDS	HRGS	ORDS	HRGS	ORDS	HRGS	ORDS
<b>SEATTLE</b>														
FAM.LAW	677	2241	410	2103	354	1883	473	1888	481	2227	458	2043	409	1984
DAILY AVG.	11	37	7	34	6	31	8	31	8	37	8	33	7	33
PATERNITY	386	1776	62	1668	55	1571	40	1434	42	1506	49	1207	97	1437
DAILY AVG.	6	29	1	27	1	26	1	24	1	25	1	20	2	24
DOM. VIOL.	285	557	183	526	204	513	238	481	250	534	211	439	252	512
DAILY AVG.	5	9	3	9	3	8	4	8	4	9	3	7	4	8
	3RD QTR, 2012		4TH QTR, 2012		1ST QTR, 2013		2ND QTR, 2013		3RD QTR, 2013		4TH QTR, 2013		1ST QTR, 2014	
	HRGS	HRGS	HRGS	ORDS	HRGS	ORDS	HRGS	ORDS	HRGS	ORDS	HRGS	ORDS	HRGS	ORDS
<b>KENT</b>														
FAM.LAW	620	1655	713	1714	730	1845	451	1635	436	1793	449	1733	382	1685
DAILY AVG.	10	27	12	28	12	30	7	27	7	29	7	28	6	28
PATERNITY	392	1313	376	1183	366	1157	144	1154	82	1227	62	1088	61	1196
DAILY AVG.	6	22	6	19	6	19	2	19	1	20	1	18	1	20
DOM. VIOL.	455	543	433	516	393	489	370	443	429	546	363	532	332	501
DAILY AVG.	7	9	7	8	6	8	6	7	7	9	6	9	5	8
	3RD QTR, 2012		4TH QTR, 2012		1ST QTR, 2013		2ND QTR, 2013		3RD QTR, 2013		4TH QTR, 2013		1ST QTR, 2014	
	HRGS	ORDS	HRGS	ORDS	HRGS	ORDS	HRGS	ORDS	HRGS	ORDS	HRGS	ORDS	HRGS	ORDS
<b>GRAND TOTAL</b>	2815	8085	2177	7710	2102	7458	1716	7035	1720	7833	1592	7042	1533	7315
<b>OVERALL DAILY AVG.</b>	46	133	36	126	34	122	28	115	28	128	26	115	25	120

The statistics on family law and Ex Parte activity are obtained directly from SCOMIS using the appropriate docket codes.

Table 9. Ex Parte Activity

SEATTLE	1ST QTR, 2013		2ND QTR, 2013		3RD QTR, 2013		4TH QTR, 2013		1ST QTR, 2014	
	HRGS	ORDS	HRGS	ORDS	HRGS	ORDS	HRGS	ORDS	HRGS	ORDS
ADOP/PAT	48	206	66	276	62	299	104	322	62	216
DOM. VIOL.	6	343	5	371	5	388	9	338	9	373
OTH. CIVIL	311	511	349	562	370	631	323	573	247	531
DOMESTIC	727	2137	718	2256	731	2284	662	2146	532	1761
PROB/GDN	1355	2489	1437	2420	1258	2134	1336	2430	1220	2257
SUBTOTAL	2447	5686	2575	5885	2426	5736	2434	5809	2070	5138
DAILY AVG.	40	93	42	96	40	94	40	95	34	84

SEATTLE VIA CLERK (starting Jan 2009)	1ST QTR, 2013		2ND QTR, 2013		3RD QTR, 2013		4TH QTR, 2013		1ST QTR, 2014	
	----	ORDS	----	ORDS	----	ORDS	----	ORDS	----	ORDS
ADOP/PAT	----	109	----	107	----	101	----	151	----	108
DOM. VIOL.	----	6	----	9	----	4	----	5	----	1
OTH. CIVIL	----	5581	----	5310	----	5343	----	4997	----	4871
DOMESTIC	----	1183	----	1401	----	1401	----	1397	----	1325
PROB/GDN	----	718	----	792	----	805	----	792	----	749
SUBTOTAL	----	7597	----	7619	----	7654	----	7342	----	7054
DAILY AVG.	----	125	----	125	----	125	----	120	----	116

SEATTLE MAIL-IN	1ST QTR, 2013		2ND QTR, 2013		3RD QTR, 2013		4TH QTR, 2013		1ST QTR, 2014	
	----	ORDS	----	ORDS	----	ORDS	----	ORDS	----	ORDS
ADOP/PAT	----	1	----	3	----	4	----	0	----	2
DOM. VIOL.	----	1	----	0	----	0	----	0	----	0
OTH. CIVIL	----	135	----	130	----	167	----	125	----	159
DOMESTIC	----	22	----	31	----	35	----	37	----	35
PROB/GDN	----	85	----	74	----	118	----	65	----	79
SUBTOTAL	----	244	----	238	----	324	----	227	----	275
DAILY AVG.	----	4	----	4	----	5	----	4	----	5

Note: Ex Parte via Clerk started in January 2009.

Table 9 (cont). Ex Parte Activity

KENT	1ST QTR, 2013		2ND QTR, 2013		3RD QTR, 2013		4TH QTR, 2013		1ST QTR, 2014	
	HRGS	ORDS	HRGS	ORDS	HRGS	ORDS	HRGS	ORDS	HRGS	ORDS
ADOP/PAT	22	72	36	121	46	140	48	155	21	82
DOM. VIOL.	3	403	5	433	1	457	4	376	2	444
OTH. CIVIL	295	483	285	514	322	546	263	449	300	466
DOMESTIC	359	1297	370	1331	463	1620	395	1366	330	1281
PROB/GDN	406	854	421	856	457	822	468	894	444	912
SUBTOTAL	1085	3109	1117	3255	1289	3585	1178	3240	1097	3185
DAILY AVG.	18	51	18	53	21	59	19	53	18	52

KENT VIA CLERK (starting Jan 2009)	1ST QTR, 2013		2ND QTR, 2013		3RD QTR, 2013		4TH QTR, 2013		1ST QTR, 2014	
	HRGS	ORDS	HRGS	ORDS	HRGS	ORDS	HRGS	ORDS	HRGS	ORDS
ADOP/PAT	----	60	----	40	----	64	----	39	----	40
DOM. VIOL.	----	3	----	0	----	0	----	3	----	2
OTH. CIVIL	----	3376	----	3109	----	3254	----	3020	----	2813
DOMESTIC	----	471	----	509	----	484	----	479	----	460
PROB/GDN	----	266	----	249	----	256	----	259	----	293
SUBTOTAL	----	4176	----	3907	----	4058	----	3800	----	3608
DAILY AVG.	----	68	----	64	----	67	----	62	----	59

KENT MAIL-IN	1ST QTR, 2013		2ND QTR, 2013		3RD QTR, 2013		4TH QTR, 2013		1ST QTR, 2014	
	HRGS	ORDS	HRGS	ORDS	HRGS	ORDS	HRGS	ORDS	HRGS	ORDS
ADOP/PAT	----	0	----	0	----	1	----	0	----	0
DOM. VIOL.	----	0	----	0	----	0	----	0	----	0
OTH. CIVIL	----	26	----	43	----	34	----	25	----	25
DOMESTIC	----	19	----	12	----	11	----	12	----	14
PROB/GDN	----	26	----	37	----	36	----	27	----	22
SUBTOTAL	----	71	----	92	----	82	----	64	----	61
DAILY AVG.	----	1	----	2	----	1	----	1	----	1

ALL SEATTLE AND KENT	1ST QTR, 2013		2ND QTR, 2013		3RD QTR, 2013		4TH QTR, 2013		1ST QTR, 2014	
	HRGS	ORDS	HRGS	ORDS	HRGS	ORDS	HRGS	ORDS	HRGS	ORDS
GRAND TOTAL	3532	20884	3692	20997	3715	21440	3612	20483	3167	19322
DAILY AVERAGE	57.9	342.4	60.5	344.2	60.9	351.5	59.2	335.8	51.9	316.8

Note: Ex Parte via Clerk started in January 2009.

# Appendix Glossary and Definition

## General Definition

### **Active Status**

A case is active if it is not on suspense status (see Suspense Status).

### **Case**

A case is defined as a filing with an assigned case number (or a case number plus a defendant connection code in pre-1990 criminal filings).

### **Completion**

A case is completed when dispositive document is filed with the court following resolution.

### **Jury Trial**

A hearing is reported as a jury trial if the jury is impaneled.

### **New Case**

A new case is an original filing with new case number assigned.

### **Non-Jury Trial**

A hearing is reported as a non-jury trial if an opening statement is made, waived, or reserved. A juvenile fact finding hearings is reported as a non-jury trial.

### **Pending Case**

A case is defined as pending if it is unresolved and active (not in suspense).

### **Reactivated Case**

A case returns to active status from suspense status during the reporting period.

### **Re-opened Cases**

A case is re-opened if it has been previously completed but returns to the court for supplement or change of the original case resolution. A re-opened case does not have a new case number. Only resolved cases can be "re-opened". (Note: measurement not available as of July 1996. SCOMIS capacity may exist after conversion to DB2 in the future).

### **Resolution**

A case is resolved if all issues in the complaint are fully adjudicated.

### **Suspended Case**

A case is placed in suspense status from active status during the reporting period.

### **Suspense Status**

A case is on suspense status if it is on warrant, appeal, stay, mediation, arbitration ("Deferred Prosecution" is not a suspense status, but is treated as a resolution).

### **Trial**

A hearing set before a judge or jury in which all the issues in the case are meant to be resolved. A trial normally includes opening statements to the court or jury stating what the evidence will show, introduction of witnesses and exhibits for direct and cross examination, final arguments to the court or jury in which counsel argue both the evidence and the law, and judgment by the court or jury stating what the facts of the case are and what law applies to the facts. In a jury case, it also includes the selection of the jury. A trial can be held

for one or more cases. A single trial may be held to adjudicate more than one case (as defined above).

### **Post-resolution Modifications**

In this report, we also report the post-resolution modifications for case type 3 (domestic) and 5 (paternity). These numbers are based on the tracks (DMOD and DTBA) opened after the original resolution date (i.e., if the track beginning date is after the resolution date).

## Section I. Filing Activity

### **Additional Filings with Clerk**

Filings with clerk without assigning a SCOMIS case number. This reporting category consists of search warrants, wire taps, extradition, oaths and orders pertaining to Pro Tem judge/commissioners/Court

Reporters/Bailiffs, and other "non-case" filings as recorded under 12050 system.

### **Annual Filings**

Total number of new case filings during the calendar year (January 1 to December 31).

### **Adoption Cases**

This reporting category includes the following "cause-of-action" codes within SCOMIS case type 5:

- Relinquishment (REL)
- Termination of Parent/Child Relationship (TER)
- Adoption (ADP)
- Miscellaneous (MSC)
- Name Change - Confidential (CHN)
- Initial Pre-Placement Report Filed with Clerk (PPR)

### **General Civil Cases**

"General Civil" cases include all civil matters other than Domestic, Probate, Guardianship, Adoption, Paternity and appeals from courts of limited jurisdiction and "Matters Filed with Clerk". "General civil" cases include small claims as identified by the "Small Claim Track". This reporting category includes the following "cause-of-action" codes within SCOMIS case type 2:

- Administrative Law Review (ALR)
- Change of Name - Non-Confidential (CHN)
- Collection (COL)
- Commercial (COM)
- Condemnation (CON)
- Domestic Violence Protection (DVP)
- Emancipation of Minor (EOM)
- Foreclosure (FOR)
- Civil Harassment (HAR)
- Injunction (INJ)
- Other Malpractice (MAL)
- Medical Malpractice (MED)
- Meretricious Relationship (MER)
- Malicious Harassment (MHA)
- Miscellaneous (MSC)
- Minor Settlement (MST) - as of 10/1/96, under Guardianship
- Petition of Civil Commitment- Sexual Predator (PCC)
- Property Fairness (PFA)

- Personal Injury (PIN)
- Property Damage (PRP)
- Quiet Title (QTI)
- Small Claims (LCA/LCI on "Small Claim Track")
- Seizure of Property from the Commission of a Crime (SPC)
- Seizure of Property Resulting from a Crime (SPR)
- Tort Motor Vehicle (TMV)
- Tort Other (TTO)
- Unlawful Detainer (UND)
- Wrongful Death (WDE)
- Writ of Habeas Corpus (WHC)
- Miscellaneous Writ (WMW)
- Writ of Mandamus (WRM)
- Writ of Restitution (WRR)
- Writ of Review (WRV)

### **Civil RALJ Cases**

Civil appeals from courts of limited jurisdiction (excluding small claims as identified by the "Small Claim Track"). Civil RALJ includes the following "cause-of-action" reporting categories:

- Lower Court Appeal - Civil and "Not a Small Claim"
- Lower Court Appeal - Infraction and "Not a Small Claim"

Note: The Civil RALJ cases are determined based on both SCOMIS "cause-of-action" code (LCA and LCI) within SCOMIS case type 2 and the "Small Claim Track".

### **Criminal Cases (excl. RALJ)**

Adult criminal cases, excluding appeals from courts of limited jurisdiction. This reporting category includes the following crime categories within SCOMIS case type 1:

- Homicide
- Sex Crime
- Robbery
- Assault
- Theft/Burglary
- Motor Vehicle Theft
- Controlled Substance
- Other Felony
- Others (Misdemeanor, Non-charge Case)

### **Criminal RALJ Cases**

Criminal appeals from courts of limited jurisdiction. This reporting category includes all SCOMIS case type 1 cases that have an appeal from lower court field of "Yes".

### **Domestic Cases**

This reporting category includes the following "cause-of-action" codes within SCOMIS case type 3:

- Annulment – Invalidity (INV)
- Child Custody (CUS)
- Dissolution With Children Of The Marriage (DIC)
- Dissolution With No Children Of The Marriage (DIN)
- Dissolution of Domestic Partnership – With Children (DPC)
- Dissolution of Domestic Partnership – With No Children (DPN)
- Foreign Judgment (FJU)
- Invalidity – Domestic Partnership (INP)
- Mandatory Wage Assignment (MWA)
- Miscellaneous (MSC)
- Modification (MOD)
- Modification – Support Only (MDS)
- Out-Of-State Child Custody (OSC)
- Parenting Plan / Child Support (PPS)
- Reciprocal, Respondent In-County (RIC)
- Reciprocal, Respondent Out-of-County (ROC)
- Legal Separation (SEP)
- Legal Separation – Domestic Partnership (SPD)

### **Guardianship Cases**

This reporting category includes the following "cause-of-action" codes within SCOMIS case type 4:

- Guardianship/Estate (G/E)
- Guardianship (GND)
- Limited Guardianship (LGD)
- Minor Settlement (MST)

### **Juvenile ARY/CHINS Cases**

Juvenile dependency cases, excluding truancy cases and DEP cause code. This reporting category includes following "cause-of-action" codes within SCOMIS case type 7:

- Alternative Residential Placement (ARP)
- At-Risk Youth (ARY)
- Child in Need of Service (CNS)

### **Juvenile Dependency Cases**

This reporting category includes following "cause-of-action" codes within SCOMIS case type 7:

- Dependency (DEP)
- Termination (TER)
- Developmental Disability (DDP)
- Guardianship Foster Children (GFC)
- Reinstatement of Parental Rights (RPR)
- Extension of Foster Care (EFC)
- Relative Visitation (RVS)

### **Juvenile Offender Cases**

This reporting category includes the following crime categories in SCOMIS case type 8:

- Homicide
- Sex Crime
- Robbery
- Assault
- Theft/Burglary
- Motor Vehicle Theft
- Controlled Substance
- Other Felony
- Others (Misdemeanor, Non-charge Case)

### **Juvenile Truancy Cases**

Mandatory truancy filings started on 10/01/1995. This reporting category includes the following "cause-of-action" code within SCOMIS case type 7:

- Truancy (TRU)

### **Matters Filed with Clerk**

Filings with clerk (case numbers assigned), but requiring little or no judicial action. This reporting category includes the following "cause-of-action" codes within SCOMIS case type 2:

- Abstract of Judgment (ABJ)
- Foreign Judgment (FJU)
- Tax Warrant (TAX)
- Transcripts of Judgment (TRJ)

### **Mental Illness Cases**

This reporting category includes all "cause-of-action" codes within SCOMIS case type 6:

- Alcoholic Treatment (ALT)
- Mental Illness - Adult (MI)
- Mental Illness - Juvenile (MIJ)

### **Paternity Cases**

This reporting category includes the following "cause-of-action" codes within SCOMIS case type 5:

- Modification (MOD)
- Paternity (PAT)
- Paternity/URES/UFSA (PUR)

### **Probate Cases**

This reporting category includes the following "cause-of-action" codes within SCOMIS case type 4:

- Absentee (ABS)
- Disclaimer (DSC)
- Estate (EST)
- Foreign Will (FNW)
- Miscellaneous (MSC)
- Non-Probate Notice to Creditors (NNC)
- Will Only (WLL)

### **Total Cases**

New cases with case numbers assigned, excluding “Matters Filed with Clerk” and “Additional Filings with Clerk”.

### **Year-to-Date Filings**

Total number of new filings since the beginning of calendar year (January 1) to the end of reporting period.

## **Section II. Resolution Category**

### **Adoption - Resolved by Trial**

Court Decision after Non-Jury Trial (CDAT)

### **Adoption - Uncontested**

Consolidated Case (CONS)  
Uncontested Resolution (UNDS)

### **Adoption - Settlement/Dismissal**

Closed by Court Order after a Hearing (CLCO)  
Dismissal without Trial (DSM)  
Dismissal after Non-Jury Trial Commencement (DAT)  
Settled after Non-Jury Trial Commencement (SAT)  
Settled by Parties/Agreed Judgment (STPR)

### **Adoption - Closure by Clerk**

Dismissal/Closure by Clerk (DSCK)

### **Adoption - Others**

Change of Venue/Jurisdiction (CHV)  
Other Non-specified Resolutions

### **Civil - Resolved by Jury Trial**

Jury Verdict after Trial (JVAT)

### **Civil - Resolved by Non-Jury Trial**

Court Decision after Non-Jury Trial (CDAT)

### **Civil - Summary Judgment**

Summary Judgment (SMJG)

### **Civil - Default/Uncontested**

Consolidated Case (CONS)  
Default Judgment (DFJG)  
Uncontested Resolution (UNDS)

### **Civil - Arbitration**

Settle by Arbitration (ARBA)

### **Civil - Settlement/Dismissal**

Closed by Court Order after a Hearing (CLCO)  
Dismissal after Non-Jury Trial (DAT)  
Dismissal after Jury Trial (DJT)  
Dismissal (DSM)  
Settled after Non-Jury Trial Commencement (SAT)  
Settled after Jury Trial Commencement (SJT)  
Settled by Parties/Agreed Judgment (STPR)

### **Civil - Closure by Clerk**

Dismissal/Closure by Clerk (DSCK)

### **Civil - Others**

Transferred to Federal bankruptcy Court (BANK)  
Change of Venue/Jurisdiction (CHV)  
Other Non-specified Resolutions

### **Civil RALJ - RALJ Decision**

Court Decision to Affirm Appeal/review (CDTA)  
Court Decision to Modify Appeal/Review (CDTM)  
Court Decision to Reverse Appeal/review (CDTR)

### **Civil RALJ - Dismissal**

Dismissal and Remand of Appeal/Review (DSRM)

### **Civil RALJ - Others**

Other Non-specified Resolutions

### **Comparison with Court Standard**

Percentage of cases actually falling within the Court’s standard benchmark.

### **Court Standard**

Benchmarks set by a state advisory committee and adopted by the court indicating percentage of cases to be resolved at certain age (in months, 1 month = 30 days as used in the Advisory Case Processing Time Standard as published in the Court Rule).

Court standard is based on timelines as suggested by State Advisory Committee. For a case type with no time standard, the standard for a similar case type is adopted if appropriate.

*Criminal: 90% by 4 months, 98% by 6 months, 100% by 9 months.*

*Civil: 90% by 12 months, 98% by 18 months, 100% by 24 months.*

*Domestic: 90% by 8 months, 98% by 10 months, 100% by 14 months.*

*Probate/Guardianship: 90% by 8 months, 98% by 18 months, 100% by 36 months.*

*Adoption/Paternity: 90% by 8 months, 98% by 10 months, 100% by 14 months.*

*Mental Illness/Juvenile Truancy: No standard yet.*

*Juvenile Dependency: 90% by 8 months, 98% by 10 months, 100% by 14 months.*

*Juvenile Offender: 90% by 4 months, 98% by 6 months, 100% by 9 months.*

*Criminal RALJ/Civil RALJ: 90% by 4 months, 98% by 5 months, 100% by 6 months.*

### **Criminal - Resolved by Jury Trial**

Acquittal by Jury (AQJV)  
Convicted - Jury Verdict after Trial (CVJV)

### **Criminal - Resolved by Non-Jury Trial**

Acquittal by Court (AQCT)  
Convicted - Court Decision after Non-Jury Trial (CVCT)

### **Criminal - Resolved by Guilty Plea**

Guilty Plea (GP)  
Guilty Plea after Non-Jury Trial Commencement (GPAT)  
Guilty Plea after Jury Trial Commencement (GPJT)

### **Criminal - Dismissal**

Dismissal after Non-Jury Trial Commencement (DAT)  
Dismissal after Jury Trial Commencement (DJT)  
Dismissal (DSM)

### **Criminal - Others**

Change of Venue (CHV)  
Consolidated Case (CONS)  
Continued Order of Prosecution with Completion (CTOP)\*  
Deferred Prosecution (DFPD)  
Dismissal/Closure by Clerk (DSCK)  
Governor’s warrant (GW)  
Not Guilty by Reason of Insanity (NGRI)  
Uncontested Resolution (UNDS)  
Waiver of Extradition (WE)  
Other Non-specified Resolutions

\* Note: For adult criminal cases, “CTOP” does not necessarily constitute resolution. An adult criminal case with a “CTOP” as resolution code is counted as a resolved case only if a completion code exists along with the “CTOP”. If the resolution code is CTOP and there is no completion code, then the case is treated as unresolved. The primary reason for combining “CTOP” with a completion code is to determine resolution for drug court cases (CTOP is entered in the

SCOMIS resolution field as soon as a defendant enrolls in Drug Court). This rule on “CTOP” applies to adult criminal cases only.

***Criminal RALJ - RALJ Decision***

Court Decision to Affirm Appeal/review (CDTA)  
Court Decision to Modify Appeal/Review (CDTM)  
Court Decision to Reverse Appeal/review (CDTR)

***Criminal RALJ - Dismissal***

Dismissal and Remand of Appeal/Review (DSRM)

***Criminal RALJ - Others***

Other Non-specified Resolutions

***Domestic - Resolved by Trial***

Court Decision after Non-Jury Trial (CDAT)

***Domestic - Default/Uncontested***

Consolidated Case (CONS)  
Default Judgment (DFJG)  
Uncontested Resolution (UNDS)

***Domestic - Settlement/Dismissal***

Settled by Arbitration (ARBA)  
Closed by Court Order after a Hearing (CLCO)  
Dismissal after Non-Jury Trial Commencement (DAT)  
Dismissal (DSM)  
Settled after Non-Jury Trial Commencement (SAT)  
Settled by Parties/Agreed Judgment (STPR)

***Domestic - Closure by Clerk***

Dismissal/Closure by Clerk (DSCK)

***Domestic - Others***

Change of Venue/Jurisdiction (CHV)  
Summary Judgment (SMJG)  
Other Non-specified Resolutions

***Guardianship - Guardian Appointed***

Guardian Appointed (PRGA)

***Guardianship - Dismissal***

Closed by Court Order after a Hearing (CLCO)  
Dismissal (DSM)

***Guardianship - Closure by Clerk***

Dismissal/Closure by Clerk (DSCK)

***Guardianship - Others***

Change of Venue/Jurisdiction (CHV)  
Consolidated Case (CONS)  
Uncontested Resolution (UNDS)  
Other Non-specified Resolutions

***Juvenile Dependency - Finding of Dependency***

Approved Petition (APP)

***Juvenile Dependency - Dismissal***

Dismissal (DSM)

***Juvenile Dependency - Others***

Change of Venue/Jurisdiction (CHV)  
Consolidated Case (CONS)  
Transfer of Jurisdiction (TRJU)  
Other Non-specified Resolutions

***Juvenile Offender - Resolved by Trial***

Acquittal by Court (AQCT)  
Convicted - Court Decision after Adjudictory Hearing (CVCT)

***Juvenile Offender - Resolved by Guilty Plea***

Guilty Plea before Adjudictory Hearing Commencement (GP)  
Guilty Plea after Adjudictory Hearing Commencement (GPAT)

***Juvenile Offender - Dismissal***

Dismissal after Adjudictory Hearing Commencement (DAT)  
Dismissal (DSM)

***Juvenile Offender - Others***

Change of venue (CHV)  
Dismissal/Closure by Clerk (DSCK)  
Consolidated Case (CONS)

Continued Prosecution (CTOP)  
Decline of Jurisdiction (DECL)  
Uncontested Resolution (UNDS)  
Other Non-specified Resolutions

***Juvenile Truancy - Finding of Truancy***

Approved Petition (APP)

***Juvenile Truancy - Dismissal***

Dismissal (DSM)

***Juvenile Truancy - Others***

Change of Venue (CHV)  
Consolidated Case (CONS)  
Transfer of Jurisdiction (TRJU)  
Other Non-specified Resolutions

***Mental Illness - Court Decision to Commit***

Court Decision to Commit (CDTC)

***Mental Illness - Closed by Court***

Closed by Court (CLCO)

***Mental Illness - Dismissal***

Dismissal (DSM)

***Mental Illness - Others***

Change of Venue/Jurisdiction (CHV)  
Uncontested Resolution (UNDS)  
Other Non-specified Resolutions

***Paternity - Resolved by Trial***

Court Decision after Non-Jury Trial (CDAT)

***Paternity - Summary Judgment***

Summary Judgment (SMJG)

***Paternity - Default/Uncontested***

Consolidated Case (CONS)  
Default Judgment (DFJG)  
Uncontested Resolution (UNDS)

***Paternity - Settlement/Dismissal***

Settled by Arbitration (ARBA)  
Closed by Court Order after a Hearing (CLCO)  
Dismissal after Non-Jury Trial Commencement (DAT)  
Dismissal (DSM)  
Settled after Non-Jury Trial Commencement (SAT)  
Settled by Partied/Agreed Judgment (STPR)

***Paternity - Closure by Clerk***

Dismissal/Closure by Clerk (DSCK)

***Paternity - Others***

Change of Venue (CHV)  
Other Non-specified Resolutions

***Percentile***

Percent of cases resolved at a given age. For example, if resolved cases had a 98 percentile of 12 months, it means that 98% of the cases were resolved within the age of 12 months, or conversely 2% of the cases were resolved after 12 months, not counting suspense time.



**Probate - Personal Representative Appointed**

Non-Intervention Probate (NIP)  
Personal Representative Appointed (PRGA)

**Probate - Dismissal**

Closed by Court Order after a Hearing (CLCO)  
Dismissal (DSM)

**Probate - Closure by Clerk**

Dismissal/Closure by Clerk (DSCK)

**Probate - Others**

Change of Venue (CHV)  
Consolidated Case (CONS)  
Uncontested Resolution (UNDS)  
Other Non-specified Resolutions

**Backlogged Cases**

Active pending cases with an age exceeding the court-adopted time standard for each specific case type (recommended by the State Advisory Committee, see definition for *Court Standard*).

**Section III. Pending Caseload**

**Adjustment**

Adjustment made because of vacating of resolutions, or change in suspense status between two reporting period.

**End Pending**

Total number of pending cases at the end of reporting period.

**Previous Pending**

Total number of pending cases at the beginning of reporting period.

**Resolution Rate**

Resolution rate is defined as the ratio of number of resolutions to number of new filings (i.e., number of resolutions divided by number of new filings) during the reporting period. The resolution rate measures the relative pace of resolution in relation to the pace of new filings. A resolution rate of greater than 1 indicates the number of resolutions exceeds the number of new filings.

**On-review Status**

Cases that have been resolved (post-resolution) but still need court resources for periodic review and other remaining outstanding issues.

*Probate (EST), Paternity (PAT) and Dependency (DEP): Resolved and not completed (paternity or dependency established, but outstanding issues remain).*

*Guardianship (GDN,LGD,G/E): Resolved and on tracks of G1,G2,G3,GE or GD; Minor Settlement (MST): Resolved with a future hearing date.*

**Section IV. Age of Pending Cases**

**Case Age**

The age of a case is the time (number of days) since the filing date, less any suspense time if applicable.

**Median Age**

The median age is the time that 50% of the cases are under and 50% are above the given age. For example, if pending cases have a median age of 12 months, it means that 50% of the pending cases are within the age of 12 months, and 50% of pending cases are over 12 months. The median age is more robust to cases with extreme age values than the average age.

**Suspense Time**

Time (days) that a case is on suspense status before its resolution. If a case has more than one suspense between filing and resolution, the suspense time is the total from all suspenses. Time on suspense status after resolution (e.g., appeals) is not counted.