

King County Superior Court
Quarterly Statistical Report

Second Quarter 2014

Department of Judicial Administration
Prepared by: Shiquan Liao, Ph.D., Statistician

Release Date: July 20, 2014

Report #: QTR-2014-2

Table 1. Year-to-Date Filing Activity

King County Superior Court

Reporting Category	Year-to-Date and Annual Filing Activity ⁽¹⁾					2013-2014 change (+ means "increase")		% of 2014 Total Filing ⁽²⁾
	2010	2011	2012	2013	2014	Cases	Percentage	
Total (incl. RALJ)								
Year-to-Date Filing	30451	30375	28659	27123	26530	-593	-2.1%	
Annual Filing	59798	58337	54834	52755				
Criminal (excl. RALJ)								
Year-to-Date Filing	3354	3135	3123	2985	3177	+192	+6.4%	12.0%
Annual Filing	6691	5986	5942	6045				
General Civil (excl. Asbestos)								
Year-to-Date Filing	13716	14099	12976	11661	10826	-835	-7.2%	40.8%
Annual Filing	27603	27499	24477	22347				
Asbestos Cases (civil) ⁽³⁾								
Year-to-Date Filing	11	24	16	37	16	-21	-56.8%	0.1%
Annual Filing	29	43	36	63				
Domestic								
Year-to-Date Filing	4067	4008	3874	3990	4013	+23	+0.6%	15.1%
Annual Filing	7850	7865	7678	7897				
Probate								
Year-to-Date Filing	2608	2952	2858	3050	3010	-40	-1.3%	11.3%
Annual Filing	5203	5417	5492	5844				
Guardianship								
Year-to-Date Filing	457	413	451	444	486	+42	+9.5%	1.8%
Annual Filing	893	837	879	884				
Adoption								
Year-to-Date Filing	350	336	241	216	231	+15	+6.9%	0.9%
Annual Filing	686	688	511	483				
Paternity								
Year-to-Date Filing	640	511	633	519	376	-143	-27.6%	1.4%
Annual Filing	1189	1039	1161	931				
Mental Illness								
Year-to-Date Filing	1499	1700	1771	1724	1890	+166	+9.6%	7.1%
Annual Filing	3059	3506	3591	3678				
Juvenile DEP/TER								
Year-to-Date Filing	544	559	526	548	666	+118	+21.5%	2.5%
Annual Filing	1038	1060	1050	1137				
Juvenile ARY/CHINS/OTHER								
Year-to-Date Filing	213	179	147	92	144	+52	+56.5%	0.5%
Annual Filing	347	303	242	168				
Juvenile Truancy								
Year-to-Date Filing	1069	917	806	894	738	-156	-17.4%	2.8%
Annual Filing	1614	1350	1271	1236				
Juvenile Offender								
Year-to-Date Filing	1794	1404	1114	857	857	0	0.0%	3.2%
Annual Filing	3967	3356	2496	2249				
Criminal RALJ								
Year-to-Date Filing	90	109	94	88	76	-12	-13.6%	0.3%
Annual Filing	176	191	192	181				
Civil RALJ								
Year-to-Date Filing	39	29	29	18	24	+6	+33.3%	0.1%
Annual Filing	64	57	63	53				
Matters Filed with Clerk ⁽⁴⁾								
Year-to-Date Filing	7853	6871	7805	6655	6895	+240	+3.6%	
Annual Filing	15586	14799	15046	13763				

(1) New filings only (based on filing date), excluding re-opened cases (unable to count), and reflecting all documents received by 07/15/2014.

(2) New filings of each reporting category as percentage of "Year-to-Date Filing".

(3) "Matters Filed with Clerk" and "Additional Filings with Clerk" are not included in the "Total".

Chart 1-A. Quarterly Filing Activity
Total Judicial Cases Only ("Matters Filed with Clerk" excluded)

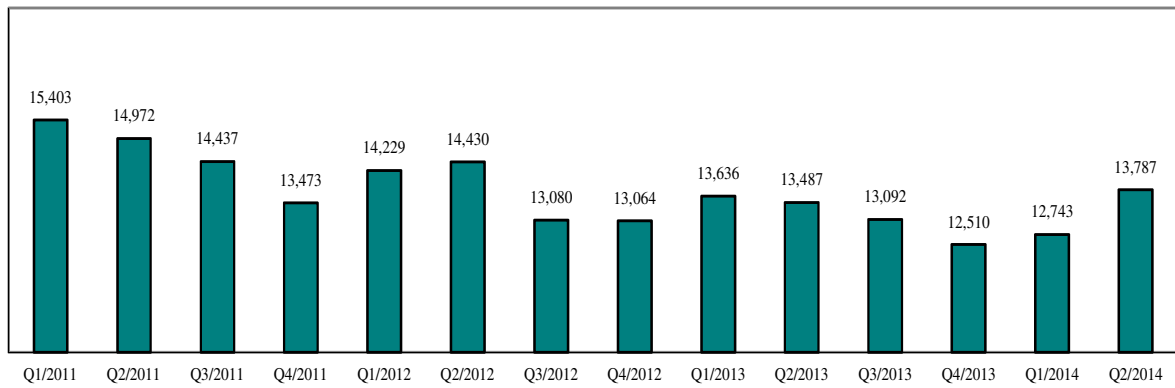
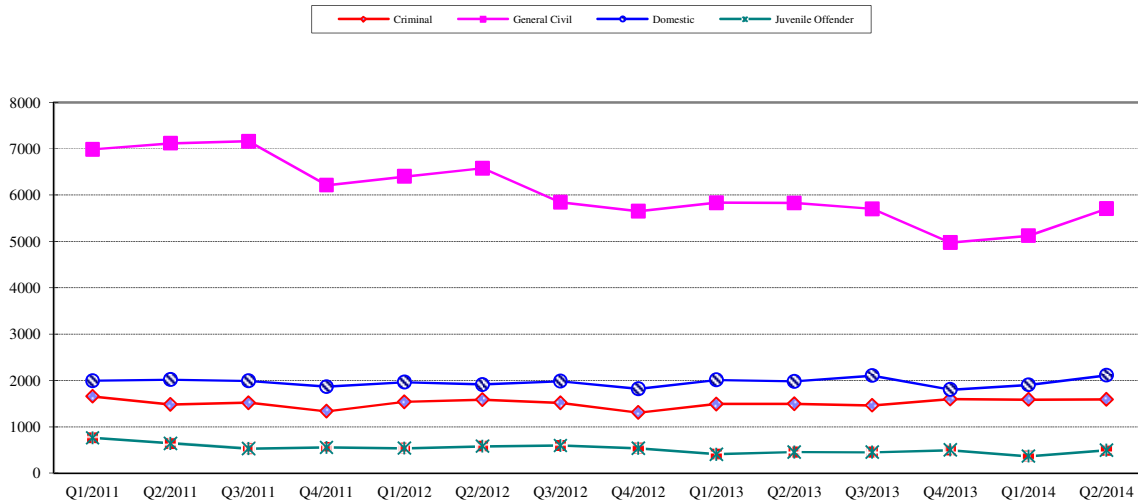


Chart 1-B. Quarterly Filings: Criminal, Domestic, General Civil and Juvenile Offender Cases Only



* Note: "General Civil" is specifically defined in this report. The category of "General Civil" does **not** include the following case types: domestic, probate, guardianship, adoption, paternity, mental illness, juvenile cases (dependency, at-risk youth, child-in-need of service, civil RALJ, and tax filings that don't require judicial resources ("matters filed with clerk"). Please check the Appendix for the cause codes in the "General Civil" category.

Table 1-A. Post-Resolution Modifications (Domestic and Paternity Cases)

Based on Tracks Opened After Original Resolution Date

		2012Q1			2012Q2			2012Q3			2012Q4			Year 2012		
Location	Case Type	DMOD	DTBA	Total	DMOD	DTBA	Total	DMOD	DTBA	Total	DMOD	DTBA	Total	DMOD	DTBA	Total
KNT	Domestic	183	55	238	153	56	209	150	61	211	159	38	197	645	210	855
	Paternity	15	4	19	14	8	22	16	4	20	13	6	19	58	22	80
KNT Total		198	59	257	167	64	231	166	65	231	172	44	216	703	232	935
SEA	Domestic	153	68	221	156	84	240	192	71	263	149	68	217	650	291	941
	Paternity	6	18	24	13	22	35	16	10	26	4	7	11	39	57	96
SEA Total		159	86	245	169	106	275	208	81	289	153	75	228	689	348	1037
KNT/SEA Total		357	145	502	336	170	506	374	146	520	325	119	444	1392	580	1972
		2013Q1			2013Q2			2013Q3			2013Q4			Year 2013		
Location	Case Type	DMOD	DTBA	Total	DMOD	DTBA	Total	DMOD	DTBA	Total	DMOD	DTBA	Total	DMOD	DTBA	Total
KNT	Domestic	160	47	207	149	59	208	179	45	224	152	53	205	640	204	844
	Paternity	17	7	24	13	11	24	14	3	17	11	7	18	55	28	83
KNT Total		177	54	231	162	70	232	193	48	241	163	60	223	695	232	927
SEA	Domestic	132	67	199	169	102	271	185	74	259	152	70	222	638	313	951
	Paternity	6	9	15	16	11	27	18	6	24	13	5	18	53	31	84
SEA Total		138	76	214	185	113	298	203	80	283	165	75	240	691	344	1035
KNT/SEA Total		315	130	445	347	183	530	396	128	524	328	135	463	1386	576	1962
		2014Q1			2014Q2			2014Q3			2014Q4			Year 2014		
Location	Case Type	DMOD	DTBA	Total	DMOD	DTBA	Total	DMOD	DTBA	Total	DMOD	DTBA	Total	DMOD	DTBA	Total
KNT	Domestic	144	43	187	172	66	238							316	109	425
	Paternity	15	4	19	11	7	18							26	11	37
KNT Total		159	47	206	183	73	256							342	120	462
SEA	Domestic	155	59	214	155	104	259							310	163	473
	Paternity	14	6	20	8	10	18							22	16	38
SEA Total		169	65	234	163	114	277							332	179	511
KNT/SEA Total		328	112	440	346	187	533							674	299	973

* DMOD = parenting plan modification track; DTBA = support modification track.

Table 2. Number of Cases Resolved and Resolution Category (%)

King County Superior Court

Reporting Category	Q3/12	Q4/12	Q1/13	Q2/13	Q3/13	Q4/13	Q1/14	Q2/14*
Total Resolutions (excl. "Matters Filed with Clerk")	13962	13730	14048	14104	13836	13052	13126	13573
Criminal (excl. RALJ): # Resolved	1365	1423	1539	1388	1524	1364	1475	1440
Resolved by Jury Trial	3.0%	3.1%	3.8%	4.3%	3.3%	3.7%	3.9%	3.8%
Resolved by Non-Jury Trial	0.7%	1.1%	1.5%	1.2%	1.8%	1.2%	1.0%	1.3%
Resolved by Guilty Plea	79.9%	82.3%	78.8%	79.7%	79.9%	78.5%	78.9%	77.2%
Dismissal	16.0%	13.2%	15.4%	14.7%	14.8%	16.3%	16.0%	17.4%
Others	0.4%	0.4%	0.5%	0.1%	0.3%	0.3%	0.3%	0.2%
General Civil: # Resolved	6473	6274	6503	6402	6054	5478	5751	6055
Resolved by Jury Trial	0.5%	0.4%	0.5%	0.6%	0.6%	0.5%	0.4%	0.4%
Resolved by Non-Jury Trial	0.4%	0.4%	0.5%	0.4%	0.3%	0.4%	0.6%	0.3%
Summary Judgment	1.9%	1.8%	1.7%	1.8%	1.7%	1.9%	1.8%	2.5%
Default/ Uncontested	40.5%	41.5%	41.3%	41.9%	39.9%	36.6%	35.8%	37.9%
Arbitration	2.1%	2.6%	2.6%	2.4%	2.7%	2.6%	2.4%	2.8%
Settlement/Dismissal	50.9%	50.0%	49.8%	49.3%	51.3%	54.5%	51.5%	50.6%
Closure by Clerk	3.0%	2.2%	2.9%	2.5%	2.3%	2.5%	3.0%	2.9%
Others	0.8%	1.1%	0.9%	1.1%	1.2%	1.1%	4.5%	2.7%
Asbestos Cases (civil): # Resolved	36	31	15	20	9	4	26	13
Resolved by Jury Trial	0.0%	0.0%	6.7%	5.0%	0.0%	0.0%	0.0%	0.0%
Resolved by Non-Jury Trial	0.0%	0.0%	0.0%	0.0%	0.0%	0.0%	0.0%	0.0%
Summary Judgment	0.0%	0.0%	0.0%	5.0%	0.0%	0.0%	3.9%	7.7%
Default/ Uncontested	2.8%	0.0%	6.7%	5.0%	22.2%	0.0%	7.7%	0.0%
Arbitration	0.0%	0.0%	0.0%	0.0%	0.0%	0.0%	0.0%	0.0%
Settlement/Dismissal	16.7%	100%	53.3%	60.0%	77.8%	100%	80.8%	69.2%
Closure by Clerk	80.6%	0.0%	33.3%	20.0%	0.0%	0.0%	0.0%	23.1%
Others	0.0%	0.0%	0.0%	5.0%	0.0%	0.0%	0.0%	0.0%
Domestic: # Resolved	1929	2081	1928	1965	2055	2023	1933	2022
Resolved by Trial	4.2%	4.9%	4.5%	4.5%	3.8%	4.0%	4.2%	4.4%
Default/ Uncontested	9.5%	10.0%	9.1%	8.3%	11.1%	8.7%	8.6%	9.3%
Settlement /Dismissal	84.8%	84.5%	84.9%	86.3%	84.7%	86.4%	86.3%	85.5%
Closure by Clerk	1.1%	0.5%	1.2%	0.5%	0.3%	0.4%	0.5%	0.5%
Others	0.4%	0.0%	0.4%	0.4%	0.1%	0.6%	0.5%	0.4%
Probate: # Resolved	1266	1336	1547	1580	1319	1333	1441	1520
Personal Rep. Appointed	70.5%	72.8%	72.9%	66.3%	70.7%	74.6%	73.6%	71.5%
Dismissal	2.0%	2.0%	1.8%	5.0%	2.4%	1.5%	1.5%	3.4%
Closure by Clerk	0.0%	0.0%	0.0%	3.5%	0.0%	0.0%	0.0%	0.2%
Others	27.6%	25.3%	25.4%	25.2%	27.0%	23.9%	24.8%	24.9%
Guardianship: # Resolved	222	219	176	212	232	218	214	257
Guardian Appointed	62.2%	58.0%	50.0%	49.1%	54.7%	52.3%	53.3%	54.5%
Dismissal	36.9%	42.0%	50.0%	50.0%	44.8%	47.7%	46.3%	44.0%
Closure by Clerk	0.0%	0.0%	0.0%	0.0%	0.0%	0.0%	0.0%	0.4%
Others	0.9%	0.0%	0.0%	0.9%	0.4%	0.0%	0.5%	1.2%
Adoption: # Resolved	113	190	95	123	146	155	87	152
Resolved by Trial	0.0%	0.0%	0.0%	0.8%	0.7%	0.0%	0.0%	2.6%
Uncontested	3.5%	0.0%	9.5%	1.6%	3.4%	0.7%	10.3%	5.3%
Settlement /Dismissal	96.5%	100%	90.5%	95.9%	95.2%	98.7%	88.5%	92.1%
Closure by Clerk	0.0%	0.0%	0.0%	1.6%	0.0%	0.0%	1.2%	0.0%
Others	0.0%	0.0%	0.0%	0.0%	0.7%	0.7%	0.0%	0.0%
Paternity: # Resolved	275	230	265	247	242	234	264	231
Resolved by Trial	0.7%	0.4%	0.4%	0.8%	0.8%	1.7%	0.4%	0.9%
Summary Judgment	40.4%	49.1%	48.3%	51.4%	42.2%	49.2%	48.9%	25.1%
Default/ Uncontested	25.1%	25.2%	22.6%	23.5%	33.1%	23.9%	25.8%	32.0%
Settlement/Dismissal	33.8%	25.2%	28.7%	23.9%	24.0%	25.2%	24.6%	28.1%
Closure by Clerk	0.0%	0.0%	0.0%	0.4%	0.0%	0.0%	0.4%	0.0%
Others	0.0%	0.0%	0.0%	0.0%	0.0%	0.0%	0.0%	0.0%

Reflecting all documents received by 07/15/2014.

Table 2 (cont.). Number of Cases Resolved and Resolution Category (%)

King County Superior Court

Reporting Category	Q3/12	Q4/12	Q1/13	Q2/13	Q3/13	Q4/13	Q1/14	Q2/14*
Mental Illness: # Resolved	996	844	754	893	1113	1125	859	996
Court Decision to Commit	62.0%	68.3%	70.9%	70.1%	55.0%	55.2%	66.5%	63.9%
Closed by Court	0.0%	0.0%	0.0%	0.0%	0.0%	0.0%	0.2%	0.0%
Dismissal	18.8%	24.5%	22.2%	21.3%	21.5%	20.5%	21.0%	20.6%
Others	19.3%	7.2%	7.0%	8.6%	23.5%	24.3%	12.3%	15.6%
Juv. DEP/TER: # Resolved	273	282	294	411	251	231	298	145
Finding of Dependency	62.3%	68.4%	69.7%	76.6%	74.5%	65.4%	72.2%	72.7%
Dismissal	37.7%	30.5%	29.9%	21.2%	23.5%	32.9%	27.2%	27.3%
Others	0.0%	1.1%	0.3%	2.2%	2.0%	1.7%	0.7%	0.0%
Juv. ARY/CHINS/OTHER:# Resolved	56	42	62	69	45	50	68	61
Approve of Petition	51.8%	50.0%	45.2%	60.9%	60.0%	56.0%	64.7%	57.4%
Dismissal	48.2%	50.0%	54.8%	37.7%	37.8%	42.0%	35.3%	42.6%
Others	0.0%	0.0%	0.0%	1.5%	2.2%	2.0%	0.0%	0.0%
Juvenile Truancy: # Resolved	328	192	302	226	296	336	189	109
Approve of Petition	0.0%	18.8%	36.4%	40.3%	0.3%	13.4%	48.7%	72.5%
Dismissal	100%	81.3%	63.6%	59.7%	99.7%	86.6%	51.3%	24.8%
Others	0.0%	0.0%	0.0%	0.0%	0.0%	0.0%	0.0%	2.8%
Juvenile Offender: # Resolved	561	522	511	501	491	441	465	413
Resolved by Trial (Fact Finding)	3.9%	6.3%	12.0%	11.2%	6.1%	7.5%	3.9%	7.8%
Resolved by Guilty Plea	42.1%	40.8%	40.9%	36.7%	35.2%	39.5%	41.3%	34.1%
Dismissal	35.8%	37.9%	27.2%	28.5%	41.6%	32.4%	35.5%	43.6%
Deferred Disposition (DDSP)	15.3%	12.8%	16.6%	16.6%	14.3%	16.1%	16.8%	11.1%
Others (including Deferred Prosecution)	3.9%	2.1%	3.3%	7.0%	0.0%	4.5%	2.6%	3.4%
Criminal RALJ: # Resolved	46	51	38	45	46	54	41	48
RALJ Decision	56.5%	51.0%	60.5%	66.7%	58.7%	63.0%	73.2%	72.9%
Dismissal	34.8%	29.4%	34.2%	31.1%	39.1%	33.3%	24.4%	25.0%
Others	8.7%	19.6%	5.3%	2.2%	2.2%	3.7%	2.4%	2.1%
Civil RALJ: # Resolved	23	17	19	22	13	6	15	11
RALJ Decision	52.2%	30.8%	15.8%	50.0%	61.5%	50.0%	40.0%	63.6%
Dismissal	34.8%	69.2%	84.2%	50.0%	38.5%	50.0%	46.7%	27.3%
Others	13.0%	0.0%	0.0%	0.0%	0.0%	0.0%	13.3%	9.1%

* Reflecting all documents received by 07/15/2014.

Chart 2-A. Quarterly Resolutions
Total Judicial Cases Only ("Matters Filed with Clerk" excluded)

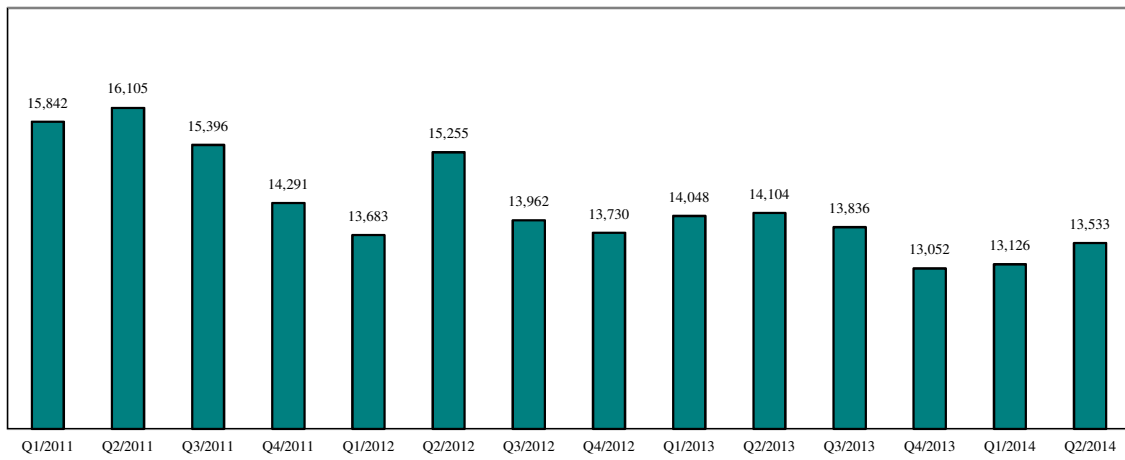
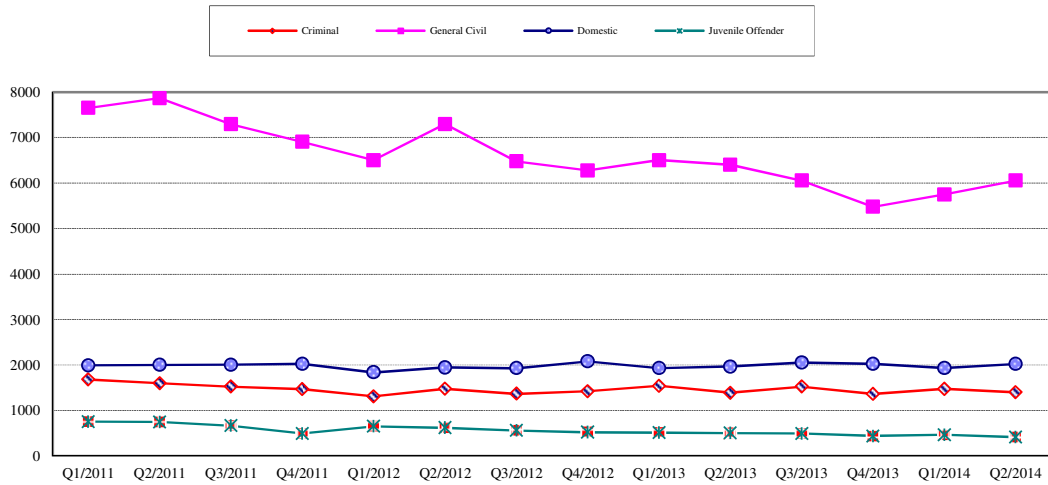


Chart 2-B. Quarterly Resolutions: Criminal, Dmestic, General Civil and Juvenile Offender Cases Only



* Note: "General Civil" is specifically defined in this report. The category of "General Civil" does **not** include the following case types: domestic, probate, guardianship, adoption, paternity, mental illness, juvenile cases (dependency, at-risk youth, child-in-need of service), civil RALJ, and tax filings that don't require judicial resources ("matters filed with clerk"). Please check the Appendix for the cause codes in the "General Civil" category.

Table 3. Age of Resolved Cases
King County Superior Court

Reporting Category	Age of Cases at Resolution							
	Q3/12	Q4/12	Q1/13	Q2/13	Q3/13	Q4/13	Q1/14	Q2/14*
Criminal (excl. RALJ)								
Age (days)								
50% Cases Resolved by Day	106	112	120	110	116	117	118	117
90% Cases Resolved by Day	373	309	346	398	371	359	378	360
Comparison with Court Standard of								
90% in 4 months	56%	54%	50%	54%	52%	51%	51%	51%
98% in 6 months	72%	73%	69%	69%	69%	69%	69%	67%
100% in 9 months	85%	87%	84%	82%	84%	84%	83%	83%
General Civil ⁽¹⁾								
Age (days)								
50% Cases Resolved by Day	27	29	28	27	29	38	42	36
90% Cases Resolved by Day	514	504	512	515	496	484	520	468
Comparison with Court Standard of								
90% in 12 months	84%	83%	80%	83%	83%	83%	81%	84%
98% in 18 months	92%	92%	92%	92%	93%	93%	91%	94%
100% in 24 months	97%	98%	98%	97%	97%	97%	96%	98%
Domestic								
Age (days)								
50% Cases Resolved by Day	169	170	181	164	150	155	175	181
90% Cases Resolved by Day	385	391	387	380	371	379	373	376
Comparison with Court Standard of								
90% in 8 months	64%	64%	63%	66%	67%	66%	62%	64%
98% in 10 months	72%	73%	71%	75%	84%	75%	73%	75%
100% in 14 months	93%	97%	92%	92%	94%	94%	94%	93%
Probate								
Age (days)								
50% Cases Resolved by Day	0	0	0	0	0	0	0	0
90% Cases Resolved by Day	9	4	4	311	7	6	5	21
Comparison with Court Standard of								
90% in 8 months	99%	98%	98%	89%	98%	99%	99%	98%
98% in 18 months	100%	99%	100%	91%	100%	100%	100%	99%
100% in 36 months	100%	99%	100%	94%	100%	100%	100%	100%
Guardianship								
Age (days)								
50% Cases Resolved by Day	65	57	61	59	63	63	66	59
90% Cases Resolved by Day	158	166	259	342	247	172	223	221
Comparison with Court Standard of								
90% in 8 months	90%	93%	90%	87%	90%	91%	93%	91%
98% in 18 months	97%	98%	94%	97%	97%	100%	100%	97%
100% in 36 months	99%	100%	99%	99%	98%	100%	100%	99%
Adoption								
Age (days)								
50% Cases Resolved by Day	81	52	93	108	65	49	45	88
90% Cases Resolved by Day	253	206	700	863	591	215	185	593
Comparison with Court Standard of								
90% in 8 months	88%	92%	69%	74%	74%	92%	92%	74%
98% in 10 months	93%	93%	75%	76%	75%	95%	92%	77%
100% in 14 months	97%	94%	81%	77%	78%	95%	95%	81%
Paternity								
Age (days)								
50% Cases Resolved by Day	152	155	173	180	165	181	190	154
90% Cases Resolved by Day	271	272	273	296	271	300	273	288
Comparison with Court Standard of								
90% in 8 months	82%	84%	80%	79%	63%	74%	76%	84%
98% in 10 months	93%	93%	93%	91%	76%	91%	95%	93%
100% in 14 months	99%	98%	100%	98%	98%	97%	98%	96%

Table 3 (cont.) Age of Resolved Cases

King County Superior Court

Reporting Category	Age of Cases at Resolution							
	Q3/12	Q4/12	Q1/13	Q2/13	Q3/13	Q4/13	Q1/14	Q2/14*
Mental Illness**								
Age (days)								
50% Cases Resolved by Day	3	3	2	3	4	4	3	3
90% Cases Resolved by Day	182	10	9	9	333	287	10	13
Juvenile DEP/TER								
Age (days)								
50% Cases Resolved by Day	94	104	93	188	84	101	141	112
90% Cases Resolved by Day	432	839	487	821	218	296	446	259
Comparison with Court Standard of								
90% in 8 months	80%	81%	77%	56%	93%	89%	80%	89%
98% in 10 months	83%	84%	83%	59%	94%	92%	83%	94%
100% in 14 months	90%	86%	88%	72%	95%	94%	87%	99%
Juv ARY/CHINS/OTHER								
Age (days)								
50% Cases Resolved by Day	44	73	55	41	39	44	48	24
90% Cases Resolved by Day	245	282	238	692	235	112	1058	109
Comparison with Court Standard of								
90% in 8 months	88%	85%	90%	82%	91%	94%	83%	95%
98% in 10 months	99%	89%	93%	85%	91%	94%	86%	99%
100% in 14 months	100%	95%	98%	87%	96%	98%	86%	100%
Juvenile Truancy**								
Age (days)								
50% Cases Resolved by Day	68	27	32	22	25	67	39	30
90% Cases Resolved by Day	158	198	85	60	100	177	150	94
Juvenile Offender								
Age (days)								
50% Cases Resolved by Day	69	73	83	73	78	77	71	78
90% Cases Resolved by Day	175	258	221	243	223	217	195	250
Comparison with Court Standard of								
90% in 4 months	78%	75%	69%	70%	69%	71%	76%	67%
98% in 6 months	85%	86%	85%	81%	84%	83%	88%	78%
100% in 9 months	95%	93%	94%	91%	93%	94%	95%	91%
Criminal RALJ								
Age (days)								
50% Cases Resolved by Day	258	254	258	283	275	286	264	282
90% Cases Resolved by Day	603	382	413	433	447	467	371	482
Civil RALJ								
Age (days)								
50% Cases Resolved by Day	234	202	171	266	165	176	157	175
90% Cases Resolved by Day	1018	1030	704	373	400	199	246	329

* Reflecting all documents received by 07/15/2014.

** No standard yet.

Table 4. Active Pending Caseload Statistics
King County Superior Court

Reporting Category	Q3/12	Q4/12	Q1/13	Q2/13	Q3/13	Q4/13	Q1/14	Q2/14*
Total (incl. RALJ)								
Previous Pending (+)	20098	19729	19396	19221	19064	18930	18749	18514
New Filing (+)	13080	13064	13636	13487	13092	12510	12743	13787
Resolved (-)	13962	13730	14048	14104	13836	13052	13126	13573
End Pending	19729	19396	19221	19064	18930	18794	18514	19112
Resolution Rate**	1.067	1.051	1.030	1.048	1.057	1.043	1.023	0.982
Criminal (excl. RALJ)								
Previous Pending (+)	2798	2860	2780	2673	2828	2752	2865	2883
New Filing (+)	1513	1305	1490	1495	1460	1599	1587	1590
Resolved (-)	1365	1423	1539	1388	1524	1364	1475	1440
End Pending	2860	2780	2673	2828	2752	2865	2883	2966
Resolution Rate**	0.902	1.090	1.033	0.928	1.044	0.853	0.929	0.881
General Civil								
Previous Pending (+)	8912	8611	8431	8112	7914	8003	8003	7518
New Filing (+)	5844	5650	5834	5827	5701	4974	5122	5704
Resolved (-)	6473	6274	6503	6402	6054	5478	5751	6055
End Pending	8611	8431	8112	7914	8005	7844	7518	7542
Resolution Rate**	1.108	1.110	1.115	1.099	1.062	1.101	1.123	1.062
Asbestos Cases (civil) ⁽¹⁾								
Previous Pending (+)	81	71	76	81	80	81	92	77
New Filing (+)	8	7	19	18	10	14	9	7
Resolved (-)	36	31	15	20	9	4	26	13
End Pending	71	76	81	80	81	92	77	70
Resolution Rate**	4.500	4.429	0.789	1.111	0.900	0.286	2.889	1.857
Domestic								
Previous Pending (+)	4544	4637	4458	4562	4580	4650	4486	4499
New Filing (+)	1982	1818	2011	1979	2103	1803	1903	2110
Resolved (-)	1929	2081	1928	1965	2055	2023	1933	2022
End Pending	4637	4458	4562	4580	4650	4486	4499	4609
Resolution Rate**	0.973	1.145	0.959	0.998	0.977	1.122	1.016	0.958
Probate								
Previous Pending (+)	631	655	615	696	588	650	768	850
New Filing (+)	1262	1365	1606	1444	1352	1429	1501	1509
Resolved (-)	1266	1336	1547	1580	1319	1333	1441	1520
End Pending	655	615	696	588	650	768	850	861
Resolution Rate**	1.003	0.979	0.963	1.094	0.976	0.933	0.960	1.007
Guardianship								
Previous Pending (+)	277	274	248	279	302	310	303	334
New Filing (+)	216	215	210	234	237	209	245	241
Resolved (-)	222	219	176	212	232	218	214	257
End Pending	274	248	279	302	310	303	334	320
Resolution Rate**	1.028	1.019	0.838	0.906	0.979	1.043	0.873	1.066
Adoption								
Previous Pending (+)	230	240	199	222	200	187	187	200
New Filing (+)	120	149	115	101	133	134	121	110
Resolved (-)	113	190	95	123	146	155	87	152
End Pending	240	199	222	200	187	166	200	158
Resolution Rate**	0.942	1.275	0.826	1.218	1.098	1.157	0.719	1.382
Paternity								
Previous Pending (+)	468	448	500	479	506	500	446	384
New Filing (+)	255	273	246	273	235	177	197	179
Resolved (-)	275	230	265	247	242	234	264	231
End Pending	448	500	479	506	500	446	384	338
Resolution Rate**	1.078	0.842	1.077	0.905	1.030	1.322	1.340	1.291

* Reflecting all documents received by 07/15/2014.

** A value of "Resolution Rate" less than one indicates the resolution pace is slower than the filing pace.

Table 4 (cont.) Active Pending Caseload Statistics
King County Superior Court

Reporting Category	Q3/12	Q4/12	Q1/13	Q2/13	Q3/13	Q4/13	Q1/14	Q2/14*
Mental Illness								
Previous Pending (+)	350	281	311	378	390	294	104	119
New Filing (+)	926	894	820	904	1019	935	876	1014
Resolved (-)	996	844	754	893	1113	1125	859	996
End Pending	281	311	378	390	294	104	119	137
Resolution Rate**	1.076	0.944	0.920	0.988	1.092	1.203	0.981	0.982
Juvenile DEP/TER								
Previous Pending (+)	534	523	516	492	419	447	507	537
New Filing (+)	235	289	246	302	273	282	302	364
Resolved (-)	273	282	294	411	251	231	298	245
End Pending	523	516	492	419	447	507	537	657
Resolution Rate**	1.162	0.976	1.195	1.361	0.920	0.819	0.987	0.673
Juv ARY/CHINS/OTHER								
Previous Pending (+)	98	89	104	101	75	86	94	105
New Filing (+)	43	52	55	37	51	58	76	68
Resolved (-)	56	42	62	69	45	50	68	61
End Pending	89	104	101	75	86	94	105	111
Resolution Rate**	1.302	0.808	1.127	1.865	0.880	0.862	0.895	0.897
Juvenile Truancy								
Previous Pending (+)	364	208	308	382	467	210	326	315
New Filing (+)	19	446	533	361	10	331	390	348
Resolved (-)	328	192	302	226	296	336	189	109
End Pending	208	308	382	467	210	326	315	508
Resolution Rate**	17.263	0.430	0.567	0.626	29.600	1.015	0.485	0.313
Juvenile Offender								
Previous Pending (+)	631	655	663	588	546	587	612	518
New Filing (+)	595	532	405	452	449	497	363	494
Resolved (-)	561	522	511	501	491	441	465	413
End Pending	655	663	588	546	587	612	518	668
Resolution Rate**	0.943	0.981	1.262	1.108	1.094	0.887	1.281	0.836
Criminal RALJ								
Previous Pending (+)	136	134	142	144	147	147	143	146
New Filing (+)	43	55	40	48	44	48	43	33
Resolved (-)	46	51	38	45	46	54	41	48
End Pending	134	142	144	147	147	143	146	133
Resolution Rate**	1.070	0.927	0.950	0.938	1.045	1.125	0.953	1.455
Civil RALJ								
Previous Pending (+)	44	43	45	32	22	24	38	29
New Filing (+)	19	14	6	12	15	20	8	16
Resolved (-)	23	13	19	22	13	6	15	11
End Pending	43	45	32	22	24	38	29	34
Resolution Rate**	1.211	0.929	3.167	1.833	0.867	0.300	1.875	0.688

* Reflecting all documents received by 07/15/2014.

** A value of "Resolution Rate" less than one indicates the resolution pace is slower than the filing pace.

Chart 4-A. Active Pending Caseload at Quarter End
Total Judicial Cases Only ("Matters Filed with Clerk" excluded)

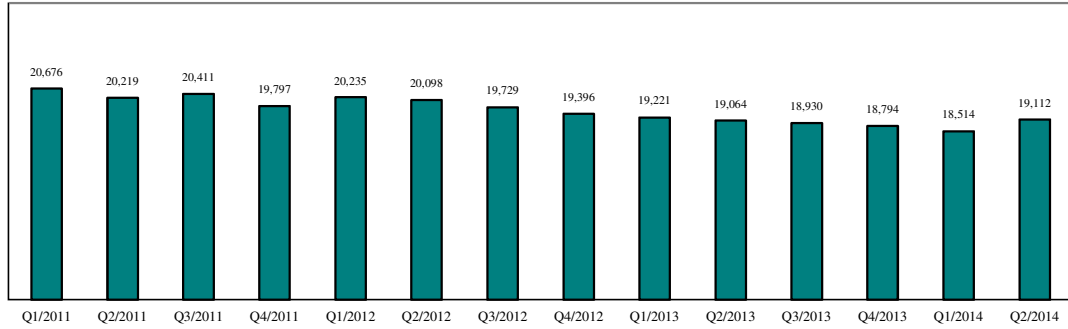


Chart 4-B. Active Pending Caseload at Quarter End: Domestic and General Civil Cases Only

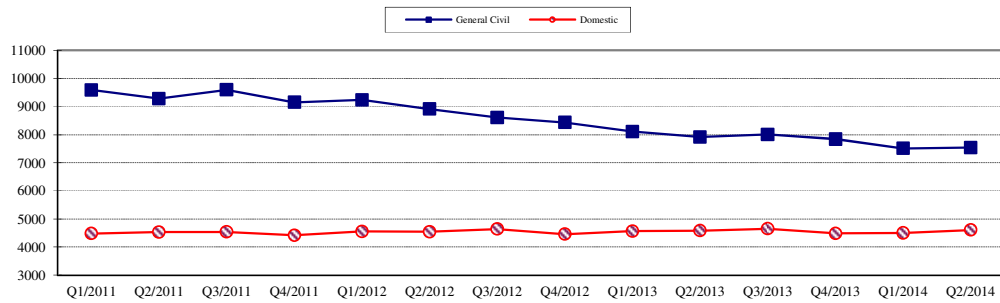
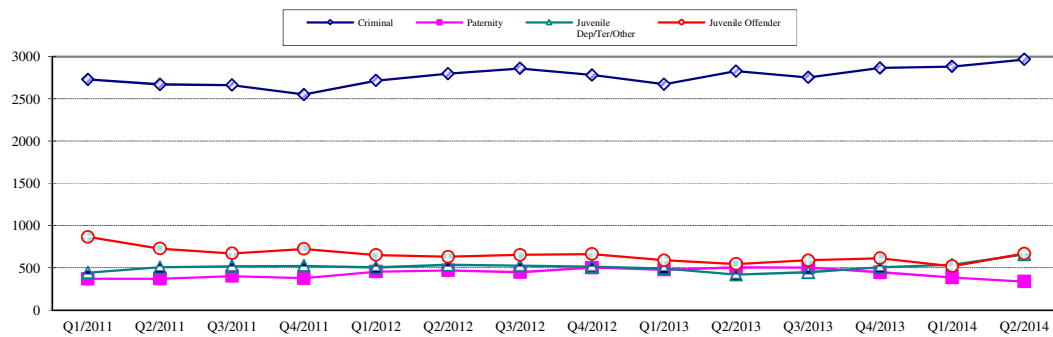


Chart 4-C. Active Pending Caseload at Quarter End:
Criminal, Juvenile Offender, Paternity and Dependency Cases Only



* Note: "General Civil" is specifically defined in this report. The category of "General Civil" does **not** include the following case types: domestic, probate, guardianship, adoption, paternity, mental illness, juvenile cases (dependency, at-risk youth, child-in-need of service), civil RALJ, and tax filings that don't require judicial resources ("matters filed with clerk"). Please check the Appendix for the cause codes in the "General Civil" category.

Table 5. Age of Pending Cases

King County Superior Court

Reporting Category	Age of Pending Cases and # of Cases in Each Age Interval							
	Q3/12	Q4/12	Q1/13	Q2/13	Q3/13	Q4/13	Q1/14	Q2/14*
Criminal (excl. RALJ): # of Cases	2860	2780	2673	2828	2752	2865	2883	2966
Age (days)								
Median (50 percentile)	110	126	116	111	117	111	110	106
95 percentile	692	706	695	703	745	771	750	754
# of Cases in Age Interval								
0 - 60 days (0 - 2 months)	844	760	833	889	861	867	966	896
61 - 120 days (3 - 4 months)	676	590	546	599	568	650	581	743
121 - 180 days (5 - 6 months)	405	422	315	382	373	366	378	380
181 - 270 days (7 - 9 months)	330	363	324	296	346	333	328	326
> 270 days (> 9 months)	605	645	655	662	604	649	630	621
General Civil: # of Cases	8611	8431	8112	7914	8005	7844	7518	7542
Age (days)								
Median (50 percentile)	188	189	179	168	165	174	172	144
95 percentile	601	641	637	633	634	658	594	566
# of Cases in Age Interval								
0 - 120 days (0 - 4 months)	3148	3108	3112	3212	3230	3018	2984	3380
121 - 240 days (5 - 8 months)	2020	1804	1710	1606	1829	1796	1965	1586
241 - 360 days (9 - 12 months)	1327	1332	1238	1216	1151	1250	1239	1176
361 - 540 days (13 - 18 months)	1473	1410	1333	1235	1138	1083	1089	941
541 - 720 days (19 - 24 months)	405	487	419	373	357	378	305	290
> 720 days (> 24 months)	238	290	300	272	300	319	206	169
Asbestos Cases (civil) ⁽¹⁾ : # of Cases	71	76	81	80	81	92	77	70
Age (days)								
Median (50 percentile)	410	524	388	280	264	296	351	372
95 percentile	1747	3168	3244	3342	2441	2533	778	851
# of Cases in Age Interval								
0 - 120 days (0 - 4 months)	11	7	20	26	17	18	10	12
121 - 240 days (5 - 8 months)	14	10	10	10	21	13	15	10
241 - 360 days (9 - 12 months)	8	11	8	12	9	23	14	11
361 - 540 days (13 - 18 months)	11	11	11	11	13	14	25	22
541 - 720 days (19 - 24 months)	6	7	6	2	5	8	7	8
> 720 days (> 24 months)	21	30	26	19	16	16	6	7
Domestic: # of Cases	4637	4458	4562	4580	4650	4486	4499	4609
Age (days)								
Median (50 percentile)	122	125	117	116	112	127	130	109
95 percentile	516	528	502	508	517	527	557	548
# of Cases in Age Interval								
0 - 120 days (0 - 4 months)	2313	2158	2327	2361	2443	2181	2182	2486
121 - 240 days (5 - 8 months)	1274	1185	1218	1128	1207	1214	1241	1065
241 - 360 days (9 - 12 months)	605	675	589	688	568	644	595	601
361 - 540 days (13 - 18 months)	239	227	221	198	215	229	248	223
> 540 days (> 18 months)	206	213	207	205	217	218	233	234
Probate: # of Cases	655	615	696	588	650	768	850	861
Age (days)								
Median (50 percentile)	605	697	559	403	415	382	418	494
95 percentile	2243	2335	2371	1970	2021	2063	2085	2164
# of Cases in Age Interval								
0 - 120 days (0 - 4 months)	93	109	144	133	142	192	173	153
121 - 240 days (5 - 8 months)	85	67	74	92	84	93	134	95
241 - 360 days (9 - 12 months)	68	59	64	52	74	83	82	104
361 - 540 days (13 - 18 months)	64	47	60	70	81	89	112	113
> 540 days (> 18 months)	345	333	354	241	269	311	349	396

Reflecting all documents received by 07/15/2014.

Table 5 (cont.). Age of Pending Cases

King County Superior Court

Reporting Category	Age of Pending Cases and # of Cases in Each Age Interval							
	Q3/12	Q4/12	Q1/13	Q2/13	Q3/13	Q4/13	Q1/14	Q2/14*
Guardianship: # of Cases	274	248	279	302	310	303	334	320
Age (days)								
Median (50 percentile)	73	69	73	65	76	103	83	91
95 percentile	605	543	560	474	489	575	580	657
# of Cases in Age Interval								
0 - 120 days (0 - 4 months)	169	157	172	199	190	166	198	181
121 - 240 days (5 - 8 months)	37	36	49	41	50	52	43	45
241 - 360 days (9 - 12 months)	22	21	24	30	37	35	30	25
361 - 540 days (13 - 18 months)	28	21	19	18	21	31	43	37
> 540 days (> 18 months)	18	13	15	14	12	19	20	32
Adoption: # of Cases	240	199	222	200	187	166	200	158
Age (days)								
Median (50 percentile)	172	271	216	151	137	155	159	120
95 percentile	1282	1706	1393	1467	1383	1629	1526	1562
# of Cases in Age Interval								
0 - 120 days (0 - 4 months)	90	55	88	90	89	72	86	81
121 - 240 days (5 - 8 months)	51	34	30	23	36	23	38	25
241 - 360 days (9 - 12 months)	21	28	24	19	14	20	14	19
361 - 540 days (13 - 18 months)	20	21	27	28	19	19	24	9
> 540 days (> 18 months)	58	61	53	40	29	32	38	24
Paternity: # of Cases	448	500	479	506	500	446	384	338
Age (days)								
Median (50 percentile)	95	92	102	87	106	119	91	96
95 percentile	235	251	294	279	305	279	320	327
# of Cases in Age Interval								
0 - 120 days (0 - 4 months)	291	303	262	327	309	230	237	210
121 - 240 days (5 - 8 months)	138	165	176	135	147	179	112	92
241 - 360 days (9 - 12 months)	12	25	32	35	30	24	22	23
361 - 540 days (13 - 18 months)	6	5	8	7	12	11	9	10
> 540 days (> 18 months)	1	2	1	2	2	2	4	3
Mental Illness: # of Cases	281	311	378	390	294	104	119	137
Age (days)								
Median (50 percentile)	97	104	172	256	259	197	70	50
95 percentile	1512	1595	1595	1680	1877	2196	546	629
# of Cases in Age Interval								
0 - 120 days (0 - 4 months)	163	181	137	79	94	47	66	79
121 - 240 days (5 - 8 months)	27	93	134	95	37	12	10	13
> 240 days (> 8 months)	91	37	107	216	163	45	43	38
Juv DEP/TER: # of Cases	523	516	492	419	447	507	537	657
Age (days)								
Median (50 percentile)	150	113	135	66	77	98	88	88
95 percentile	949	1026	1116	558	610	597	593	580
# of Cases in Age Interval								
0 - 60 days (0 - 2 months)	137	169	155	197	182	205	213	248
61 - 120 days (3 - 4 months)	93	103	72	103	93	100	109	159
121 - 180 days (5 - 6 months)	67	39	61	37	71	65	72	75
181 - 270 days (7 - 9 months)	46	50	41	33	35	45	59	63
> 270 days (> 9 months)	180	155	163	49	66	92	84	112
Juv. ARY/CHINS/OTHER: # of Cases	89	104	101	75	86	94	105	111
Age (days)								
Median (50 percentile)	333	209	276	577	413	376	162	222
95 percentile	2405	2444	2534	2678	2717	2809	2850	2941
# of Cases in Age Interval								
0 - 60 days (0 - 2 months)	19	24	26	13	19	26	29	32
61 - 120 days (3 - 4 months)	10	17	7	5	12	9	15	8
121 - 180 days (5 - 6 months)	7	5	6	4	1	4	11	12
181 - 270 days (7 - 9 months)	6	11	11	5	4	3	5	11
> 270 days (> 9 months)	47	47	51	48	50	52	45	48

* Reflecting all documents received by 07/15/2014.

Table 5 (cont.). Age of Pending Cases

King County Superior Court

Reporting Category	Age of Pending Cases and # of Cases in Each Age Interval							
	Q3/12	Q4/12	Q1/13	Q2/13	Q3/13	Q4/13	Q1/14	Q2/14*
Juvenile Truancy: # of Cases	208	308	382	467	210	326	315	508
Age (days)								
Median (50 percentile)	158	67	26	68	494	167	154	75
95 percentile	606	588	673	620	971	948	1041	837
# of Cases in Age Interval								
0 - 60 days (0 - 2 months)	11	151	226	182	11	139	105	190
61 - 120 days (3 - 4 months)	16	18	19	126	6	21	41	112
121 - 180 days (5 - 6 months)	129	0	17	21	28	3	17	24
181 - 270 days (7 - 9 months)	21	93	1	23	32	20	4	32
> 270 days (> 9 months)	31	46	119	115	133	143	148	150
Juvenile Offender: # of Cases	655	663	588	546	587	612	518	668
Age (days)								
Median (50 percentile)	63	77	80	76	81	74	97	75
95 percentile	800	552	681	508	545	517	581	620
# of Cases in Age Interval								
0 - 60 days (0 - 2 months)	312	265	250	219	231	267	180	281
61 - 120 days (3 - 4 months)	155	194	114	145	151	133	121	167
121 - 180 days (5 - 6 months)	51	81	76	51	67	79	63	70
181 - 270 days (7 - 9 months)	25	43	63	55	47	45	59	46
> 270 days (> 9 months)	112	80	85	76	91	88	95	104
Criminal RALJ: # of Cases	134	142	144	147	147	143	146	133
Age (days)								
Median (50 percentile)	139	147	160	157	144	141	147	169
95 percentile	371	400	420	392	384	391	400	410
# of Cases in Age Interval								
0 - 60 days (0 - 2 months)	29	27	26	34	34	34	31	23
61 - 120 days (3 - 4 months)	29	30	29	27	24	24	33	22
121 - 180 days (5 - 6 months)	25	28	30	24	30	28	23	29
181 - 270 days (7 - 9 months)	33	35	30	33	28	32	31	32
> 270 days (> 9 months)	18	22	29	29	31	25	28	27
Civil RALJ: # of Cases	43	45	32	22	24	38	29	34
Age (days)								
Median (50 percentile)	102	134	192	88	58	84	111	114
95 percentile	837	431	376	375	231	323	334	335
# of Cases in Age Interval								
0 - 60 days (0 - 2 months)	12	8	5	5	12	12	7	12
61 - 120 days (3 - 4 months)	12	11	3	9	5	14	10	9
121 - 180 days (5 - 6 months)	6	13	8	3	5	8	7	3
181 - 270 days (7 - 9 months)	6	7	7	2	1	2	2	8
> 270 days (> 9 months)	7	6	9	3	1	2	3	2

* Reflecting all documents received by 07/15/2014.

Table 6. Seattle vs. Regional Justice Center (KNT): Filing, Resolution, Pending Caseload (%)

King County Superior Court

	Q2/13		Q3/13		Q4/13		Q1/14		Q2/14	
	SEA	KNT	SEA	KNT	SEA	KNT	SEA	KNT	SEA	KNT
Filings Total <i>(excl. filings with clerk)</i>	65%	35%	66%	34%	67%	33%	63%	37%	64%	36%
Criminal (excl. RALJ)	55%	45%	60%	40%	60%	40%	52%	48%	51%	49%
General Civil (excl. RALJ)	59%	41%	58%	42%	58%	42%	57%	43%	57%	43%
Domestic	62%	38%	65%	35%	63%	37%	64%	36%	63%	37%
Probate	79%	21%	77%	23%	80%	20%	74%	26%	77%	23%
Guardianship	60%	40%	65%	35%	65%	35%	63%	37%	64%	36%
Adoption	76%	24%	63%	37%	74%	26%	83%	17%	81%	19%
Paternity	45%	55%	49%	51%	41%	59%	49%	51%	46%	54%
Mental Illness	100%	---	100%	---	100%	---	100%	---	100%	---
Juv. DEP/TER/Other	58%	42%	48%	52%	44%	56%	44%	56%	51%	49%
Juvenile ARY/CHINS	41%	59%	37%	63%	52%	48%	46%	54%	60%	40%
Juvenile Truancy	43%	57%	90%	10%	47%	53%	48%	52%	56%	44%
Juvenile Offender	100%	---	100%	---	100%	---	100%	---	100%	---
Criminal RALJ	92%	8%	91%	9%	92%	8%	91%	9%	94%	6%
Civil RALJ	75%	25%	87%	13%	100%	---	100%	---	88%	12%
Resolution Total <i>(excl. filings with clerk)</i>	65%	35%	64%	36%	66%	34%	65%	35%	64%	36%
Criminal (excl. RALJ)	56%	44%	54%	46%	59%	41%	58%	42%	55%	45%
General Civil (excl. RALJ)	59%	41%	57%	43%	59%	41%	60%	40%	56%	44%
Domestic	63%	37%	59%	41%	63%	37%	63%	37%	62%	38%
Probate	79%	21%	76%	24%	79%	21%	73%	27%	77%	23%
Guardianship	60%	40%	63%	37%	60%	40%	68%	32%	61%	39%
Adoption	74%	26%	67%	33%	69%	31%	83%	17%	77%	23%
Paternity	44%	56%	40%	60%	45%	55%	45%	55%	46%	54%
Mental Illness	100%	---	100%	---	100%	---	100%	---	100%	---
Juv. DEP/TER/Other	65%	35%	53%	47%	55%	45%	49%	51%	38%	62%
Juvenile ARY/CHINS	42%	58%	40%	60%	48%	52%	53%	47%	51%	49%
Juvenile Truancy	29%	71%	43%	57%	38%	62%	47%	53%	42%	58%
Juvenile Offender	100%	---	100%	---	100%	---	100%	---	100%	---
Criminal RALJ	98%	2%	96%	4%	91%	9%	93%	7%	94%	6%
Civil RALJ	82%	18%	77%	23%	83%	17%	87%	13%	91%	9%
Pending Total <i>(excl. filings with clerk)</i>	65%	35%	67%	33%	66%	34%	65%	35%	65%	35%
Criminal (excl. RALJ)	50%	50%	52%	48%	54%	46%	51%	49%	50%	50%
General Civil (excl. RALJ)	70%	30%	69%	31%	69%	31%	67%	33%	67%	33%
Domestic	60%	40%	63%	37%	62%	38%	62%	38%	63%	37%
Probate	83%	17%	84%	16%	83%	17%	84%	16%	82%	18%
Guardianship	63%	37%	63%	37%	67%	33%	63%	37%	65%	35%
Adoption	77%	23%	75%	25%	80%	20%	80%	20%	84%	16%
Paternity	47%	53%	51%	49%	50%	50%	53%	47%	54%	46%
Mental Illness	100%	---	100%	---	100%	---	100%	---	100%	---
Juv. DEP/TER/Other	61%	39%	56%	44%	49%	51%	45%	55%	50%	50%
Juvenile ARY/CHINS	83%	17%	73%	27%	72%	28%	66%	34%	73%	27%
Juvenile Truancy	53%	47%	70%	30%	60%	40%	62%	38%	59%	41%
Juvenile Offender	100%	---	100%	---	100%	---	100%	---	100%	---
Criminal RALJ	92%	8%	91%	9%	91%	9%	90%	10%	90%	10%
Civil RALJ	77%	23%	83%	17%	92%	8%	97%	3%	94%	6%

Reflecting all documents received by 07/15/2014.

Table 7. Quarterly Utilization of Pro Tem Judges/Commissioners ⁽¹⁾

Category	Q4/11	Q1/12	Q2/12	Q3/12	Q4/12	Q1/13	Q2/13	Q3/13	Q4/13	Q1/14	Q2/14
Grand Total	1157	869	1173	1304	864	814	1182	1391	2546	1450	1610
Judge FTE Equivalent ⁽³⁾	2.6	1.9	2.6	2.9	1.9	1.8	2.6	3.1	5.7	3.2	3.6
By Work Type											
Pro Tem Judge											1028
Pro Tem Commissioner											412
Unspecified											170
By Location											
KCCH											532
MRJC											505
Juvenile											282
ITA											158
Other											133
By Calendar Type											
Criminal											128
Civil											74
Ex Parte											536
Family Law/Domestic											309
Dependency											217
Juvenile Offender											103
BECCA											30
ITA											158
Juvenile Drug Court											9
Family Treatment Court											6
Plea Calendar											42
Status/Non-Compliance											0
Other or Unspecified											0
By Reason											
Vacation Backfill											565
Medical Backfill											112
Duty Time											210
Conference Coverage											259
Congestion											168
Vacancy Coverage											263
Other											34

(1) This table is based on the time sheet for compensation

(2) Judge FTE Equivalent = # of hours / [7.5 hours/day * 20 days/month * 3 months] = # of hours/450.

The statistics on Pro Tem judge/commissioner use provide information on the external help the court has obtained in order to handle the workload. The data are collected on the time sheet for compensation (therefore it does not include unpaid volunteering or visiting judges/commissioners). The database on Pro Tem judges/commissioners is managed by the Administrative Services Department (ASD) of King County Superior Court. The Pro Tem total hours presented in this section are provided quarterly by ASD.

Table 8. Family Law Activity

	4TH QTR, 2012		1ST QTR, 2013		2ND QTR, 2013		3RD QTR, 2013		4TH QTR, 2013		1ST QTR, 2014		2ND QTR, 2014	
	HRGS	ORDS	HRGS	ORDS	HRGS	ORDS	HRGS	ORDS	HRGS	ORDS	HRGS	ORDS	HRGS	ORDS
SEATTLE														
FAM.LAW	410	2103	354	1883	473	1888	481	2227	458	2043	409	1984	463	2076
DAILY AVG.	7	34	6	31	8	31	8	37	8	33	7	33	8	34
PATERNITY	62	1668	55	1571	40	1434	42	1506	49	1207	97	1437	78	1309
DAILY AVG.	1	27	1	26	1	24	1	25	1	20	2	24	1	21
DOM. VIOL.	183	526	204	513	238	481	250	534	211	439	252	512	229	476
DAILY AVG.	3	9	3	8	4	8	4	9	3	7	4	8	4	8
KENT														
FAM.LAW	713	1714	730	1845	451	1635	436	1793	449	1733	382	1685	458	1629
DAILY AVG.	12	28	12	30	7	27	7	29	7	28	6	28	8	27
PATERNITY	376	1183	366	1157	144	1154	82	1227	62	1088	61	1196	51	1008
DAILY AVG.	6	19	6	19	2	19	1	20	1	18	1	20	1	17
DOM. VIOL.	433	516	393	489	370	443	429	546	363	532	332	501	444	567
DAILY AVG.	7	8	6	8	6	7	7	9	6	9	5	8	7	9
GRAND TOTAL														
OVERALL DAILY AVG.	36	126	34	122	28	115	28	128	26	115	25	120	28	116

The statistics on family law and Ex Parte activity are obtained directly from SCOMIS using the appropriate docket codes.

Table 9. Ex Parte Activity

SEATTLE	2ND QTR, 2013		3RD QTR, 2013		4TH QTR, 2013		1ST QTR, 2014		2ND QTR, 2014	
	HRGS	ORDS	HRGS	ORDS	HRGS	ORDS	HRGS	ORDS	HRGS	ORDS
ADOP/PAT	66	276	62	299	104	322	62	216	91	311
DOM. VIOL.	5	371	5	388	9	338	9	373	10	399
OTH. CIVIL	349	562	370	631	323	573	247	531	346	528
DOMESTIC	718	2256	731	2284	662	2146	532	1761	566	1994
PROB/GDN	1437	2420	1258	2134	1336	2430	1220	2257	1342	2332
SUBTOTAL	2575	5885	2426	5736	2434	5809	2070	5138	2355	5564
DAILY AVG.	42	96	40	94	40	95	34	84	39	91

SEATTLE VIA CLERK (starting Jan 2009)	2ND QTR, 2013		3RD QTR, 2013		4TH QTR, 2013		1ST QTR, 2014		2ND QTR, 2014	
	----	ORDS	----	ORDS	----	ORDS	----	ORDS	----	ORDS
ADOP/PAT	----	107	----	101	----	151	----	108	----	115
DOM. VIOL.	----	9	----	4	----	5	----	1	----	3
OTH. CIVIL	----	5310	----	5343	----	4997	----	4871	----	4852
DOMESTIC	----	1401	----	1401	----	1397	----	1325	----	1442
PROB/GDN	----	792	----	805	----	792	----	749	----	819
SUBTOTAL	----	7619	----	7654	----	7342	----	7054	----	7231
DAILY AVG.	----	125	----	125	----	120	----	116	----	119

SEATTLE MAIL-IN	2ND QTR, 2013		3RD QTR, 2013		4TH QTR, 2013		1ST QTR, 2014		2ND QTR, 2014	
	----	ORDS	----	ORDS	----	ORDS	----	ORDS	----	ORDS
ADOP/PAT	----	3	----	4	----	0	----	2	----	3
DOM. VIOL.	----	0	----	0	----	0	----	0	----	0
OTH. CIVIL	----	130	----	167	----	125	----	159	----	100
DOMESTIC	----	31	----	35	----	37	----	35	----	30
PROB/GDN	----	74	----	118	----	65	----	79	----	92
SUBTOTAL	----	238	----	324	----	227	----	275	----	225
DAILY AVG.	----	4	----	5	----	4	----	5	----	4

Note: Ex Parte via Clerk started in January 2009.

Table 9 (cont). Ex Parte Activity

KENT	2ND QTR, 2013		3RD QTR, 2013		4TH QTR, 2013		1ST QTR, 2014		2ND QTR, 2014	
	HRGS	ORDS	HRGS	ORDS	HRGS	ORDS	HRGS	ORDS	HRGS	ORDS
ADOP/PAT	36	121	46	140	48	155	21	82	24	102
DOM. VIOL.	5	433	1	457	4	376	2	444	1	479
OTH. CIVIL	285	514	322	546	263	449	300	466	324	521
DOMESTIC	370	1331	463	1620	395	1366	330	1281	319	1282
PROB/GDN	421	856	457	822	468	894	444	912	486	900
SUBTOTAL	1117	3255	1289	3585	1178	3240	1097	3185	1154	3284
DAILY AVG.	18	53	21	59	19	53	18	52	19	54

KENT VIA CLERK (starting Jan 2009)	2ND QTR, 2013		3RD QTR, 2013		4TH QTR, 2013		1ST QTR, 2014		2ND QTR, 2014	
	----	ORDS	----	ORDS	----	ORDS	----	ORDS	----	ORDS
ADOP/PAT	----	40	----	64	----	39	----	40	----	46
DOM. VIOL.	----	0	----	0	----	3	----	2	----	1
OTH. CIVIL	----	3109	----	3254	----	3020	----	2813	----	2665
DOMESTIC	----	509	----	484	----	479	----	460	----	491
PROB/GDN	----	249	----	256	----	259	----	293	----	277
SUBTOTAL	----	3907	----	4058	----	3800	----	3608	----	3480
DAILY AVG.	----	64	----	67	----	62	----	59	----	57

KENT MAIL-IN	2ND QTR, 2013		3RD QTR, 2013		4TH QTR, 2013		1ST QTR, 2014		2ND QTR, 2014	
	----	ORDS	----	ORDS	----	ORDS	----	ORDS	----	ORDS
ADOP/PAT	----	0	----	1	----	0	----	0	----	2
DOM. VIOL.	----	0	----	0	----	0	----	0	----	0
OTH. CIVIL	----	43	----	34	----	25	----	25	----	34
DOMESTIC	----	12	----	11	----	12	----	14	----	11
PROB/GDN	----	37	----	36	----	27	----	22	----	19
SUBTOTAL	----	92	----	82	----	64	----	61	----	66
DAILY AVG.	----	2	----	1	----	1	----	1	----	1

ALL SEATTLE AND KENT	2ND QTR, 2013		3RD QTR, 2013		4TH QTR, 2013		1ST QTR, 2014		2ND QTR, 2014	
	HRGS	ORDS	HRGS	ORDS	HRGS	ORDS	HRGS	ORDS	HRGS	ORDS
GRAND TOTAL	3692	20997	3715	21440	3612	20483	3167	19322	3509	19851
DAILY AVERAGE	60.5	344.2	60.9	351.5	59.2	335.8	51.9	316.8	57.5	325.4

Note: Ex Parte via Clerk started in January 2009.

Appendix Glossary and Definition

General Definition

Active Status

A case is active if it is not on suspense status (see Suspense Status).

Case

A case is defined as a filing with an assigned case number (or a case number plus a defendant connection code in pre-1990 criminal filings).

Completion

A case is completed when dispositive document is filed with the court following resolution.

Jury Trial

A hearing is reported as a jury trial if the jury is impaneled.

New Case

A new case is an original filing with new case number assigned.

Non-Jury Trial

A hearing is reported as a non-jury trial if an opening statement is made, waived, or reserved. A juvenile fact finding hearings is reported as a non-jury trial.

Pending Case

A case is defined as pending if it is unresolved and active (not in suspense).

Reactivated Case

A case returns to active status from suspense status during the reporting period.

Re-opened Cases

A case is re-opened if it has been previously completed but returns to the court for supplement or change of the original case resolution. A re-opened case does not have a new case number. Only resolved cases can be "re-opened". (Note: measurement not available as of July 1996. SCOMIS capacity may exist after conversion to DB2 in the future).

Resolution

A case is resolved if all issues in the complaint are fully adjudicated.

Suspended Case

A case is placed in suspense status from active status during the reporting period.

Suspense Status

A case is on suspense status if it is on warrant, appeal, stay, mediation, arbitration ("Deferred Prosecution" is not a suspense status, but is treated as a resolution).

Trial

A hearing set before a judge or jury in which all the issues in the case are meant to be resolved. A trial normally includes opening statements to the court or jury stating what the evidence will show, introduction of witnesses and exhibits for direct and cross examination, final arguments to the court or jury in which counsel argue both the evidence and the law, and judgment by the court or jury stating what the facts of the case are and what law applies to the facts. In a jury case, it also includes the selection of the jury. A trial can be held

for one or more cases. A single trial may be held to adjudicate more than one case (as defined above).

Post-resolution Modifications

In this report, we also report the post-resolution modifications for case type 3 (domestic) and 5 (paternity). These numbers are based on the tracks (DMOD and DTBA) opened after the original resolution date (i.e., if the track beginning date is after the resolution date).

Section I. Filing Activity

Additional Filings with Clerk

Filings with clerk without assigning a SCOMIS case number. This reporting category consists of search warrants, wire taps, extradition, oaths and orders pertaining to Pro Tem judge/commissioners/Court

Reporters/Bailiffs, and other "non-case" filings as recorded under 12050 system.

Annual Filings

Total number of new case filings during the calendar year (January 1 to December 31).

Adoption Cases

This reporting category includes the following "cause-of-action" codes within SCOMIS case type 5:

- Relinquishment (REL)
- Termination of Parent/Child Relationship (TER)
- Adoption (ADP)
- Miscellaneous (MSC)
- Name Change - Confidential (CHN)
- Initial Pre-Placement Report Filed with Clerk (PPR)

General Civil Cases

"General Civil" cases include all civil matters other than Domestic, Probate, Guardianship, Adoption, Paternity and appeals from courts of limited jurisdiction and "Matters Filed with Clerk". "General civil" cases include small claims as identified by the "Small Claim Track". This reporting category includes the following "cause-of-action" codes within SCOMIS case type 2:

- Administrative Law Review (ALR)
- Change of Name - Non-Confidential (CHN)
- Collection (COL)
- Commercial (COM)
- Condemnation (CON)
- Domestic Violence Protection (DVP)
- Emancipation of Minor (EOM)
- Foreclosure (FOR)
- Civil Harassment (HAR)
- Injunction (INJ)
- Other Malpractice (MAL)
- Medical Malpractice (MED)
- Meretricious Relationship (MER)
- Malicious Harassment (MHA)
- Miscellaneous (MSC)
- Minor Settlement (MST) - as of 10/1/96, under Guardianship
- Petition of Civil Commitment- Sexual Predator (PCC)
- Property Fairness (PFA)

- Personal Injury (PIN)
- Property Damage (PRP)
- Quiet Title (QTI)
- Small Claims (LCA/LCI on “Small Claim Track”)
- Seizure of Property from the Commission of a Crime (SPC)
- Seizure of Property Resulting from a Crime (SPR)
- Tort Motor Vehicle (TMV)
- Tort Other (TTO)
- Unlawful Detainer (UND)
- Wrongful Death (WDE)
- Writ of Habeas Corpus (WHC)
- Miscellaneous Writ (WMW)
- Writ of Mandamus (WRM)
- Writ of Restitution (WRR)
- Writ of Review (WRV)

Civil RALJ Cases

Civil appeals from courts of limited jurisdiction (excluding small claims as identified by the “Small Claim Track”). Civil RALJ includes the following “cause-of-action” reporting categories:

- Lower Court Appeal - Civil and “Not a Small Claim”
- Lower Court Appeal - Infraction and “Not a Small Claim”

Note: The Civil RALJ cases are determined based on both SCOMIS “cause-of-action” code (LCA and LCI) within SCOMIS case type 2 and the “Small Claim Track”.

Criminal Cases (excl. RALJ)

Adult criminal cases, excluding appeals from courts of limited jurisdiction. This reporting category includes the following crime categories within SCOMIS case type 1:

- Homicide
- Sex Crime
- Robbery
- Assault
- Theft/Burglary
- Motor Vehicle Theft
- Controlled Substance
- Other Felony
- Others (Misdemeanor, Non-charge Case)

Criminal RALJ Cases

Criminal appeals from courts of limited jurisdiction. This reporting category includes all SCOMIS case type 1 cases that have an appeal from lower court field of “Yes”.

Domestic Cases

This reporting category includes the following “cause-of-action” codes within SCOMIS case type 3:

- Annulment – Invalidity (INV)
- Child Custody (CUS)
- Dissolution With Children Of The Marriage (DIC)
- Dissolution With No Children Of The Marriage (DIN)
- Dissolution of Domestic Partnership – With Children (DPC)
- Dissolution of Domestic Partnership – With No Children (DPN)
- Foreign Judgment (FJU)
- Invalidity – Domestic Partnership (INP)
- Mandatory Wage Assignment (MWA)
- Miscellaneous (MSC)
- Modification (MOD)
- Modification – Support Only (MDS)
- Out-Of-State Child Custody (OSC)
- Parenting Plan / Child Support (PPS)
- Reciprocal, Respondent In-County (RIC)
- Reciprocal, Respondent Out-of-County (ROC)
- Legal Separation (SEP)
- Legal Separation – Domestic Partnership (SPD)

Guardianship Cases

This reporting category includes the following “cause-of-action” codes within SCOMIS case type 4:

- Guardianship/Estate (G/E)
- Guardianship (GND)
- Limited Guardianship (LGD)
- Minor Settlement (MST)

Juvenile ARY/CHINS Cases

Juvenile dependency cases, excluding truancy cases and DEP cause code. This reporting category includes following “cause-of-action” codes within SCOMIS case type 7:

- Alternative Residential Placement (ARP)
- At-Risk Youth (ARY)
- Child in Need of Service (CNS)

Juvenile Dependency Cases

This reporting category includes following “cause-of-action” codes within SCOMIS case type 7:

- Dependency (DEP)
- Termination (TER)
- Developmental Disability (DDP)
- Guardianship Foster Children (GFC)
- Reinstatement of Parental Rights (RPR)
- Extension of Foster Care (EFC)
- Relative Visitation (RVS)

Juvenile Offender Cases

This reporting category includes the following crime categories in SCOMIS case type 8:

- Homicide
- Sex Crime
- Robbery
- Assault
- Theft/Burglary
- Motor Vehicle Theft
- Controlled Substance
- Other Felony
- Others (Misdemeanor, Non-charge Case)

Juvenile Truancy Cases

Mandatory truancy filings started on 10/01/1995. This reporting category includes the following “cause-of-action” code within SCOMIS case type 7:

- Truancy (TRU)

Matters Filed with Clerk

Filings with clerk (case numbers assigned), but requiring little or no judicial action. This reporting category includes the following “cause-of-action” codes within SCOMIS case type 2:

- Abstract of Judgment (ABJ)
- Foreign Judgment (FJU)
- Tax Warrant (TAX)
- Transcripts of Judgment (TRJ)

Mental Illness Cases

This reporting category includes all “cause-of-action” codes within SCOMIS case type 6:

- Alcoholic Treatment (ALT)
- Mental Illness - Adult (MI)
- Mental Illness - Juvenile (MIJ)

Paternity Cases

This reporting category includes the following “cause-of-action” codes within SCOMIS case type 5:

- Modification (MOD)
- Paternity (PAT)
- Paternity/URES/UFSA (PUR)

Probate Cases

This reporting category includes the following “cause-of-action” codes within SCOMIS case type 4:

- Absentee (ABS)
- Disclaimer (DSC)
- Estate (EST)
- Foreign Will (FNW)
- Miscellaneous (MSC)
- Non-Probate Notice to Creditors (NNC)
- Will Only (WLL)

Total Cases

New cases with case numbers assigned, excluding “Matters Filed with Clerk” and “Additional Filings with Clerk”.

Year-to-Date Filings

Total number of new filings since the beginning of calendar year (January 1) to the end of reporting period.

Section II. Resolution Category

Adoption - Resolved by Trial

Court Decision after Non-Jury Trial (CDAT)

Adoption - Uncontested

Consolidated Case (CONS)
Uncontested Resolution (UNDS)

Adoption - Settlement/Dismissal

Closed by Court Order after a Hearing (CLCO)
Dismissal without Trial (DSM)
Dismissal after Non-Jury Trial Commencement (DAT)
Settled after Non-Jury Trial Commencement (SAT)
Settled by Parties/Agreed Judgment (STPR)

Adoption - Closure by Clerk

Dismissal/Closure by Clerk (DSCK)

Adoption - Others

Change of Venue/Jurisdiction (CHV)
Other Non-specified Resolutions

Civil - Resolved by Jury Trial

Jury Verdict after Trial (JVAT)

Civil - Resolved by Non-Jury Trial

Court Decision after Non-Jury Trial (CDAT)

Civil - Summary Judgment

Summary Judgment (SMJG)

Civil - Default/Uncontested

Consolidated Case (CONS)
Default Judgment (DFJG)
Uncontested Resolution (UNDS)

Civil - Arbitration

Settle by Arbitration (ARBA)

Civil - Settlement/Dismissal

Closed by Court Order after a Hearing (CLCO)
Dismissal after Non-Jury Trial (DAT)
Dismissal after Jury Trial (DJT)
Dismissal (DSM)
Settled after Non-Jury Trial Commencement (SAT)
Settled after Jury Trial Commencement (SJT)
Settled by Parties/Agreed Judgment (STPR)

Civil - Closure by Clerk

Dismissal/Closure by Clerk (DSCK)

Civil - Others

Transferred to Federal bankruptcy Court (BANK)
Change of Venue/Jurisdiction (CHV)
Other Non-specified Resolutions

Civil RALJ - RALJ Decision

Court Decision to Affirm Appeal/review (CDTA)
Court Decision to Modify Appeal/Review (CDTM)
Court Decision to Reverse Appeal/review (CDTR)

Civil RALJ - Dismissal

Dismissal and Remand of Appeal/Review (DSRM)

Civil RALJ - Others

Other Non-specified Resolutions

Comparison with Court Standard

Percentage of cases actually falling within the Court’s standard benchmark.

Court Standard

Benchmarks set by a state advisory committee and adopted by the court indicating percentage of cases to be resolved at certain age (in months, 1 month = 30 days as used in the Advisory Case Processing Time Standard as published in the Court Rule).

Court standard is based on timelines as suggested by State Advisory Committee. For a case type with no time standard, the standard for a similar case type is adopted if appropriate.

Criminal: 90% by 4 months, 98% by 6 months, 100% by 9 months.

Civil: 90% by 12 months, 98% by 18 months, 100% by 24 months.

Domestic: 90% by 8 months, 98% by 10 months, 100% by 14 months.

Probate/Guardianship: 90% by 8 months, 98% by 18 months, 100% by 36 months.

Adoption/Paternity: 90% by 8 months, 98% by 10 months, 100% by 14 months.

Mental Illness/Juvenile Truancy: No standard yet.

Juvenile Dependency: 90% by 8 months, 98% by 10 months, 100% by 14 months.

Juvenile Offender: 90% by 4 months, 98% by 6 months, 100% by 9 months.

Criminal RALJ/Civil RALJ: 90% by 4 months, 98% by 5 months, 100% by 6 months.

Criminal - Resolved by Jury Trial

Acquittal by Jury (AQJV)
Convicted - Jury Verdict after Trial (CVJV)

Criminal - Resolved by Non-Jury Trial

Acquittal by Court (AQCT)
Convicted - Court Decision after Non-Jury Trial (CVCT)

Criminal - Resolved by Guilty Plea

Guilty Plea (GP)
Guilty Plea after Non-Jury Trial Commencement (GPAT)
Guilty Plea after Jury Trial Commencement (GPJT)

Criminal - Dismissal

Dismissal after Non-Jury Trial Commencement (DAT)
Dismissal after Jury Trial Commencement (DJT)
Dismissal (DSM)

Criminal - Others

Change of Venue (CHV)
Consolidated Case (CONS)
Continued Order of Prosecution with Completion (CTOP)*
Deferred Prosecution (DFPD)
Dismissal/Closure by Clerk (DSCK)
Governor’s warrant (GW)
Not Guilty by Reason of Insanity (NGRI)
Uncontested Resolution (UNDS)
Waiver of Extradition (WE)
Other Non-specified Resolutions

* Note: For adult criminal cases, “CTOP” does not necessarily constitute resolution. An adult criminal case with a “CTOP” as resolution code is counted as a resolved case only if a completion code exists along with the “CTOP”. If the resolution code is CTOP and there is no completion code, then the case is treated as unresolved. The primary reason for combining “CTOP” with a completion code is to determine resolution for drug court cases (CTOP is entered in the

SCOMIS resolution field as soon as a defendant enrolls in Drug Court). This rule on “CTOP” applies to adult criminal cases only.

Criminal RALJ - RALJ Decision

Court Decision to Affirm Appeal/review (CDTA)
Court Decision to Modify Appeal/Review (CDTM)
Court Decision to Reverse Appeal/review (CDTR)

Criminal RALJ - Dismissal

Dismissal and Remand of Appeal/Review (DSRM)

Criminal RALJ - Others

Other Non-specified Resolutions

Domestic - Resolved by Trial

Court Decision after Non-Jury Trial (CDAT)

Domestic - Default/Uncontested

Consolidated Case (CONS)
Default Judgment (DFJG)
Uncontested Resolution (UNDS)

Domestic - Settlement/Dismissal

Settled by Arbitration (ARBA)
Closed by Court Order after a Hearing (CLCO)
Dismissal after Non-Jury Trial Commencement (DAT)
Dismissal (DSM)
Settled after Non-Jury Trial Commencement (SAT)
Settled by Parties/Agreed Judgment (STPR)

Domestic - Closure by Clerk

Dismissal/Closure by Clerk (DSCK)

Domestic - Others

Change of Venue/Jurisdiction (CHV)
Summary Judgment (SMJG)
Other Non-specified Resolutions

Guardianship - Guardian Appointed

Guardian Appointed (PRGA)

Guardianship - Dismissal

Closed by Court Order after a Hearing (CLCO)
Dismissal (DSM)

Guardianship - Closure by Clerk

Dismissal/Closure by Clerk (DSCK)

Guardianship - Others

Change of Venue/Jurisdiction (CHV)
Consolidated Case (CONS)
Uncontested Resolution (UNDS)
Other Non-specified Resolutions

Juvenile Dependency - Finding of Dependency

Approved Petition (APP)

Juvenile Dependency - Dismissal

Dismissal (DSM)

Juvenile Dependency - Others

Change of Venue/Jurisdiction (CHV)
Consolidated Case (CONS)
Transfer of Jurisdiction (TRJU)
Other Non-specified Resolutions

Juvenile Offender - Resolved by Trial

Acquittal by Court (AQCT)
Convicted - Court Decision after Adjudictory Hearing (CVCT)

Juvenile Offender - Resolved by Guilty Plea

Guilty Plea before Adjudictory Hearing Commencement (GP)
Guilty Plea after Adjudictory Hearing Commencement (GPAT)

Juvenile Offender - Dismissal

Dismissal after Adjudictory Hearing Commencement (DAT)
Dismissal (DSM)

Juvenile Offender - Others

Change of venue (CHV)
Dismissal/Closure by Clerk (DSCK)
Consolidated Case (CONS)

Continued Prosecution (CTOP)
Decline of Jurisdiction (DECL)
Uncontested Resolution (UNDS)
Other Non-specified Resolutions

Juvenile Truancy - Finding of Truancy

Approved Petition (APP)

Juvenile Truancy - Dismissal

Dismissal (DSM)

Juvenile Truancy - Others

Change of Venue (CHV)
Consolidated Case (CONS)
Transfer of Jurisdiction (TRJU)
Other Non-specified Resolutions

Mental Illness - Court Decision to Commit

Court Decision to Commit (CDTC)

Mental Illness - Closed by Court

Closed by Court (CLCO)

Mental Illness - Dismissal

Dismissal (DSM)

Mental Illness - Others

Change of Venue/Jurisdiction (CHV)
Uncontested Resolution (UNDS)
Other Non-specified Resolutions

Paternity - Resolved by Trial

Court Decision after Non-Jury Trial (CDAT)

Paternity - Summary Judgment

Summary Judgment (SMJG)

Paternity - Default/Uncontested

Consolidated Case (CONS)
Default Judgment (DFJG)
Uncontested Resolution (UNDS)

Paternity - Settlement/Dismissal

Settled by Arbitration (ARBA)
Closed by Court Order after a Hearing (CLCO)
Dismissal after Non-Jury Trial Commencement (DAT)
Dismissal (DSM)
Settled after Non-Jury Trial Commencement (SAT)
Settled by Partied/Agreed Judgment (STPR)

Paternity - Closure by Clerk

Dismissal/Closure by Clerk (DSCK)

Paternity - Others

Change of Venue (CHV)
Other Non-specified Resolutions

Percentile

Percent of cases resolved at a given age. For example, if resolved cases had a 98 percentile of 12 months, it means that 98% of the cases were resolved within the age of 12 months, or conversely 2% of the cases were resolved after 12 months, not counting suspense time.

Probate - Personal Representative Appointed

Non-Intervention Probate (NIP)
Personal Representative Appointed (PRGA)

Probate - Dismissal

Closed by Court Order after a Hearing (CLCO)
Dismissal (DSM)

Probate - Closure by Clerk

Dismissal/Closure by Clerk (DSCK)

Probate - Others

Change of Venue (CHV)
Consolidated Case (CONS)
Uncontested Resolution (UNDS)
Other Non-specified Resolutions

Backlogged Cases

Active pending cases with an age exceeding the court-adopted time standard for each specific case type (recommended by the State Advisory Committee, see definition for *Court Standard*).

Section III. Pending Caseload

Adjustment

Adjustment made because of vacating of resolutions, or change in suspense status between two reporting period.

End Pending

Total number of pending cases at the end of reporting period.

Previous Pending

Total number of pending cases at the beginning of reporting period.

Resolution Rate

Resolution rate is defined as the ratio of number of resolutions to number of new filings (i.e., number of resolutions divided by number of new filings) during the reporting period. The resolution rate measures the relative pace of resolution in relation to the pace of new filings. A resolution rate of greater than 1 indicates the number of resolutions exceeds the number of new filings.

On-review Status

Cases that have been resolved (post-resolution) but still need court resources for periodic review and other remaining outstanding issues.

Probate (EST), Paternity (PAT) and Dependency (DEP): Resolved and not completed (paternity or dependency established, but outstanding issues remain).

Guardianship (GDN,LGD,G/E): Resolved and on tracks of G1,G2,G3,GE or GD; Minor Settlement (MST): Resolved with a future hearing date.

Section IV. Age of Pending Cases

Case Age

The age of a case is the time (number of days) since the filing date, less any suspense time if applicable.

Median Age

The median age is the time that 50% of the cases are under and 50% are above the given age. For example, if pending cases have a median age of 12 months, it means that 50% of the pending cases are within the age of 12 months, and 50% of pending cases are over 12 months. The median age is more robust to cases with extreme age values than the average age.

Suspense Time

Time (days) that a case is on suspense status before its resolution. If a case has more than one suspense between filing and resolution, the suspense time is the total from all suspenses. Time on suspense status after resolution (e.g., appeals) is not counted.