

King County Superior Court  
Quarterly Statistical Report

Third Quarter 2014

Department of Judicial Administration  
Prepared by: Shiquan Liao, Ph.D., Statistician

*Release Date: October 20, 2014*

**Report #: QTR-2014-3**

Table 1. Year-to-Date Filing Activity

## King County Superior Court

Reporting Category	Year-to-Date and Annual Filing Activity <sup>(1)</sup>					2013-2014 change (+ means "increase")		% of 2014 Total Filing <sup>(2)</sup>
	2010	2011	2012	2013	2014	Cases	Percentage	
<b>Total (incl. RALJ)</b>								
Year-to-Date Filing	45413	44842	41739	40215	39527	-688	-1.7%	
Annual Filing	59798	58337	54834	52755				
<b>Criminal (excl. RALJ)</b>								
Year-to-Date Filing	4984	4653	4636	4445	4642	+197	+4.4%	11.7%
Annual Filing	6691	5986	5942	6045				
<b>General Civil (excl. Asbestos)</b>								
Year-to-Date Filing	20864	21259	18820	17362	16353	-1009	-5.8%	41.4%
Annual Filing	27603	27499	24477	22347				
<b>Asbestos Cases (civil) <sup>(3)</sup></b>								
Year-to-Date Filing	22	31	24	47	30	-17	-36.2%	0.1%
Annual Filing	29	43	36	63				
<b>Domestic</b>								
Year-to-Date Filing	6112	5996	5856	6093	6137	+44	+0.7%	4.4%
Annual Filing	7850	7865	7678	7897				
<b>Probate</b>								
Year-to-Date Filing	3935	4213	4120	4402	4484	+82	+1.9%	11.3%
Annual Filing	5203	5417	5492	5844				
<b>Guardianship</b>								
Year-to-Date Filing	684	633	667	681	718	+37	+5.4%	1.8%
Annual Filing	893	837	879	884				
<b>Adoption</b>								
Year-to-Date Filing	522	470	361	349	334	-15	-4.3%	0.8%
Annual Filing	686	688	511	483				
<b>Paternity</b>								
Year-to-Date Filing	954	809	888	754	522	-232	-30.8%	1.3%
Annual Filing	1189	1039	1161	931				
<b>Mental Illness</b>								
Year-to-Date Filing	2304	2626	2697	2743	2886	+143	+5.2%	7.3%
Annual Filing	3059	3506	3591	3678				
<b>Juvenile DEP/TER</b>								
Year-to-Date Filing	780	820	761	822	933	+111	+13.5%	2.4%
Annual Filing	1038	1060	1050	1137				
<b>Juvenile ARY/CHINS/OTHER</b>								
Year-to-Date Filing	281	241	190	142	211	+69	+48.6%	0.5%
Annual Filing	347	303	242	168				
<b>Juvenile Truancy</b>								
Year-to-Date Filing	1083	933	825	904	765	-139	-15.4%	1.9%
Annual Filing	1614	1350	1271	1236				
<b>Juvenile Offender</b>								
Year-to-Date Filing	2708	1931	1709	1306	1357	+51	+3.9%	3.4%
Annual Filing	3356	2496	2249	1808				
<b>Criminal RALJ</b>								
Year-to-Date Filing	129	158	137	132	122	-10	-7.6%	0.3%
Annual Filing	176	191	192	181				
<b>Civil RALJ</b>								
Year-to-Date Filing	51	39	48	33	33	+0	+0.0%	0.1%
Annual Filing	64	57	63	53				
<b>Matters Filed with Clerk <sup>(4)</sup></b>								
Year-to-Date Filing	11533	11071	10895	10168	9726	-442	-4.3%	
Annual Filing	15586	14799	15046	13763				

(1) New filings only (based on filing date), excluding re-opened cases (unable to count), and reflecting all documents received by 10/15/2014.

(2) New filings of each reporting category as percentage of "Year-to-Date Filing".

(3) "Matters Filed with Clerk" and "Additional Filings with Clerk" are not included in the "Total".

Chart 1-A. Quarterly Filing Activity  
Total Judicial Cases Only ("Matters Filed with Clerk" excluded)

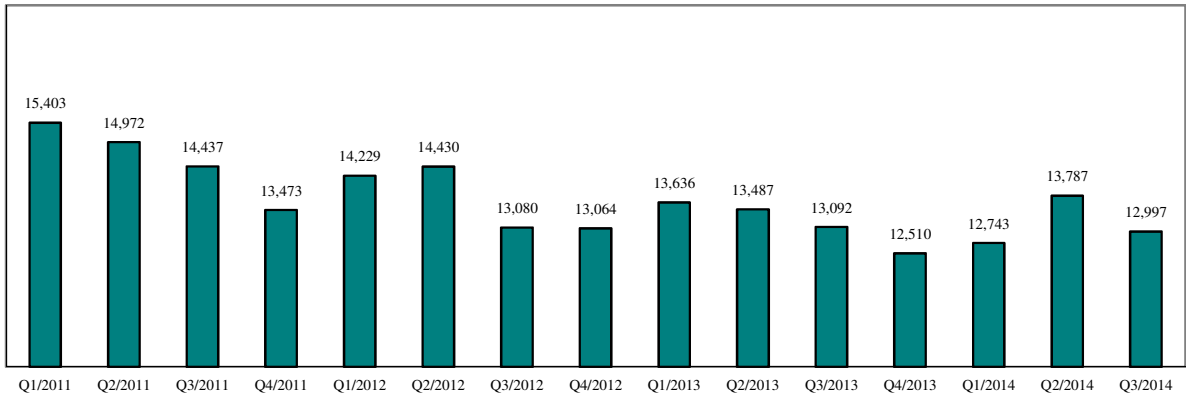
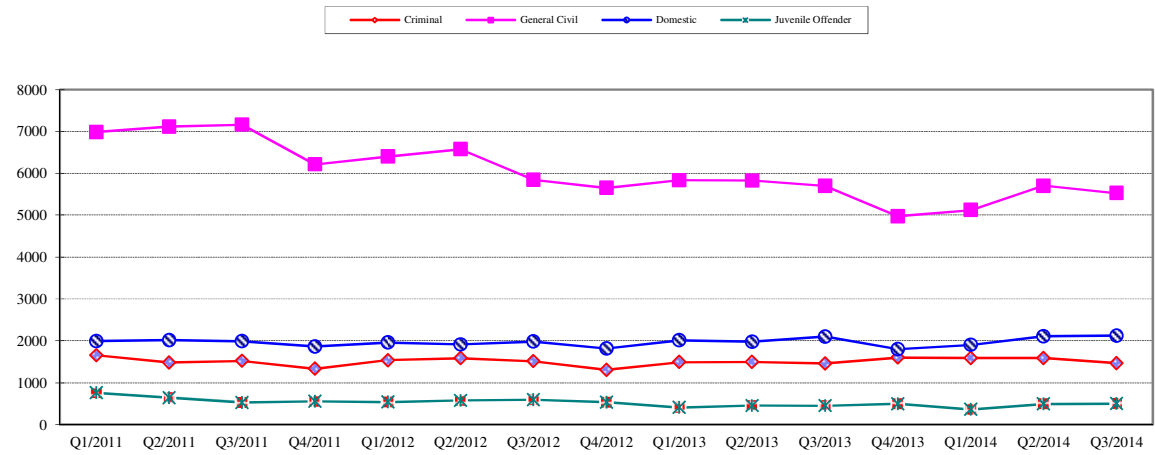


Chart 1-B. Quarterly Filings: Criminal, Domestic, General Civil and Juvenile Offender Cases Only



\* Note: "General Civil" is specifically defined in this report. The category of "General Civil" does **not** include the following case types: domestic, probate, guardianship, adoption, paternity, mental illness, juvenile cases (dependency, at-risk youth, child-in-need of service, civil RALJ, and tax filings that don't require judicial resources ("matters filed with clerk"). Please check the Appendix for the cause codes in the "General Civil" category.

Table 1-A. Post-Resolution Modifications (Domestic and Paternity Cases)

*Based on Tracks Opened After Original Resolution Date*

		2012Q1			2012Q2			2012Q3			2012Q4			Year 2012		
Location	Case Type	DMOD	DTBA	Total	DMOD	DTBA	Total	DMOD	DTBA	Total	DMOD	DTBA	Total	DMOD	DTBA	Total
KNT	Domestic	183	55	238	153	56	209	150	61	211	159	38	197	645	210	855
	Paternity	15	4	19	14	8	22	16	4	20	13	6	19	58	22	80
<b>KNT Total</b>		<b>198</b>	<b>59</b>	<b>257</b>	<b>167</b>	<b>64</b>	<b>231</b>	<b>166</b>	<b>65</b>	<b>231</b>	<b>172</b>	<b>44</b>	<b>216</b>	<b>703</b>	<b>232</b>	<b>935</b>
SEA	Domestic	153	68	221	156	84	240	192	71	263	149	68	217	650	291	941
	Paternity	6	18	24	13	22	35	16	10	26	4	7	11	39	57	96
<b>SEA Total</b>		<b>159</b>	<b>86</b>	<b>245</b>	<b>169</b>	<b>106</b>	<b>275</b>	<b>208</b>	<b>81</b>	<b>289</b>	<b>153</b>	<b>75</b>	<b>228</b>	<b>689</b>	<b>348</b>	<b>1037</b>
<b>KNT/SEA Total</b>		<b>357</b>	<b>145</b>	<b>502</b>	<b>336</b>	<b>170</b>	<b>506</b>	<b>374</b>	<b>146</b>	<b>520</b>	<b>325</b>	<b>119</b>	<b>444</b>	<b>1392</b>	<b>580</b>	<b>1972</b>
		2013Q1			2013Q2			2013Q3			2013Q4			Year 2013		
Location	Case Type	DMOD	DTBA	Total	DMOD	DTBA	Total	DMOD	DTBA	Total	DMOD	DTBA	Total	DMOD	DTBA	Total
KNT	Domestic	160	47	207	149	59	208	179	45	224	152	53	205	640	204	844
	Paternity	17	7	24	13	11	24	14	3	17	11	7	18	55	28	83
<b>KNT Total</b>		<b>177</b>	<b>54</b>	<b>231</b>	<b>162</b>	<b>70</b>	<b>232</b>	<b>193</b>	<b>48</b>	<b>241</b>	<b>163</b>	<b>60</b>	<b>223</b>	<b>695</b>	<b>232</b>	<b>927</b>
SEA	Domestic	132	67	199	169	102	271	185	74	259	152	70	222	638	313	951
	Paternity	6	9	15	16	11	27	18	6	24	13	5	18	53	31	84
<b>SEA Total</b>		<b>138</b>	<b>76</b>	<b>214</b>	<b>185</b>	<b>113</b>	<b>298</b>	<b>203</b>	<b>80</b>	<b>283</b>	<b>165</b>	<b>75</b>	<b>240</b>	<b>691</b>	<b>344</b>	<b>1035</b>
<b>KNT/SEA Total</b>		<b>315</b>	<b>130</b>	<b>445</b>	<b>347</b>	<b>183</b>	<b>530</b>	<b>396</b>	<b>128</b>	<b>524</b>	<b>328</b>	<b>135</b>	<b>463</b>	<b>1386</b>	<b>576</b>	<b>1962</b>
		2014Q1			2014Q2			2014Q3			2014Q4			Year 2014		
Location	Case Type	DMOD	DTBA	Total	DMOD	DTBA	Total	DMOD	DTBA	Total	DMOD	DTBA	Total	DMOD	DTBA	Total
KNT	Domestic	144	43	187	172	66	238	183	46	229				499	155	654
	Paternity	15	4	19	11	7	18	13	4	17				39	15	54
<b>KNT Total</b>		<b>159</b>	<b>47</b>	<b>206</b>	<b>183</b>	<b>73</b>	<b>256</b>	<b>196</b>	<b>50</b>	<b>246</b>				<b>538</b>	<b>170</b>	<b>708</b>
SEA	Domestic	155	59	214	155	104	259	170	76	246				480	239	719
	Paternity	14	6	20	8	10	18	15	11	26				37	27	64
<b>SEA Total</b>		<b>169</b>	<b>65</b>	<b>234</b>	<b>163</b>	<b>114</b>	<b>277</b>	<b>185</b>	<b>87</b>	<b>272</b>				<b>517</b>	<b>266</b>	<b>783</b>
<b>KNT/SEA Total</b>		<b>328</b>	<b>112</b>	<b>440</b>	<b>346</b>	<b>187</b>	<b>533</b>	<b>381</b>	<b>137</b>	<b>518</b>				<b>1055</b>	<b>436</b>	<b>1491</b>

\* DMOD = parenting plan modification track; DTBA = support modification track.

Table 2. Number of Cases Resolved and Resolution Category (%)

King County Superior Court

Reporting Category	Q4/12	Q1/13	Q2/13	Q3/13	Q4/13	Q1/14	Q2/14	Q3/14*
<b>Total Resolutions (excl. "Matters Filed with Clerk")</b>	<b>13730</b>	<b>14048</b>	<b>14104</b>	<b>13836</b>	<b>13052</b>	<b>13126</b>	<b>13573</b>	<b>13855</b>
<b>Criminal (excl. RALJ): # Resolved</b>	<b>1423</b>	<b>1539</b>	<b>1388</b>	<b>1524</b>	<b>1364</b>	<b>1475</b>	<b>1440</b>	<b>1540</b>
Resolved by Jury Trial	3.1%	3.8%	4.3%	3.3%	3.7%	3.9%	3.8%	3.2%
Resolved by Non-Jury Trial	1.1%	1.5%	1.2%	1.8%	1.2%	1.0%	1.3%	1.0%
Resolved by Guilty Plea	82.3%	78.8%	79.7%	79.9%	78.5%	78.9%	77.2%	80.6%
Dismissal	13.2%	15.4%	14.7%	14.8%	16.3%	16.0%	17.4%	15.0%
Others	0.4%	0.5%	0.1%	0.3%	0.3%	0.3%	0.2%	0.3%
<b>General Civil: # Resolved</b>	<b>6274</b>	<b>6503</b>	<b>6402</b>	<b>6054</b>	<b>5478</b>	<b>5751</b>	<b>6055</b>	<b>6111</b>
Resolved by Jury Trial	0.4%	0.5%	0.6%	0.6%	0.5%	0.4%	0.4%	0.4%
Resolved by Non-Jury Trial	0.4%	0.5%	0.4%	0.3%	0.4%	0.6%	0.3%	0.3%
Summary Judgment	1.8%	1.7%	1.8%	1.7%	1.9%	1.8%	2.5%	2.2%
Default/ Uncontested	41.5%	41.3%	41.9%	39.9%	36.6%	35.8%	37.9%	41.3%
Arbitration	2.6%	2.6%	2.4%	2.7%	2.6%	2.4%	2.8%	2.3%
Settlement/Dismissal	50.0%	49.8%	49.3%	51.3%	54.5%	51.5%	50.6%	49.7%
Closure by Clerk	2.2%	2.9%	2.5%	2.3%	2.5%	3.0%	2.9%	2.3%
Others	1.1%	0.9%	1.1%	1.2%	1.1%	4.5%	2.7%	1.5%
<b>Asbestos Cases (civil): # Resolved</b>	<b>31</b>	<b>15</b>	<b>20</b>	<b>9</b>	<b>4</b>	<b>26</b>	<b>13</b>	<b>14</b>
Resolved by Jury Trial	0.0%	6.7%	5.0%	0.0%	0.0%	0.0%	0.0%	7.1%
Resolved by Non-Jury Trial	0.0%	0.0%	0.0%	0.0%	0.0%	0.0%	0.0%	0.0%
Summary Judgment	0.0%	0.0%	5.0%	0.0%	0.0%	3.9%	7.7%	7.1%
Default/ Uncontested	0.0%	6.7%	5.0%	22.2%	0.0%	7.7%	0.0%	14.3%
Arbitration	0.0%	0.0%	0.0%	0.0%	0.0%	0.0%	0.0%	0.0%
Settlement/Dismissal	100%	53.3%	60.0%	77.8%	100%	80.8%	69.2%	64.3%
Closure by Clerk	0.0%	33.3%	20.0%	0.0%	0.0%	0.0%	23.1%	7.1%
Others	0.0%	0.0%	5.0%	0.0%	0.0%	0.0%	0.0%	0.0%
<b>Domestic: # Resolved</b>	<b>2081</b>	<b>1928</b>	<b>1965</b>	<b>2055</b>	<b>2023</b>	<b>1933</b>	<b>2022</b>	<b>1963</b>
Resolved by Trial	4.9%	4.5%	4.5%	3.8%	4.0%	4.2%	4.4%	4.3%
Default/ Uncontested	10.0%	9.1%	8.3%	11.1%	8.7%	8.6%	9.3%	9.0%
Settlement /Dismissal	84.5%	84.9%	86.3%	84.7%	86.4%	86.3%	85.5%	86.2%
Closure by Clerk	0.5%	1.2%	0.5%	0.3%	0.4%	0.5%	0.5%	0.3%
Others	0.0%	0.4%	0.4%	0.1%	0.6%	0.5%	0.4%	0.2%
<b>Probate: # Resolved</b>	<b>1336</b>	<b>1547</b>	<b>1580</b>	<b>1319</b>	<b>1333</b>	<b>1441</b>	<b>1520</b>	<b>1454</b>
Personal Rep. Appointed	72.8%	72.9%	66.3%	70.7%	74.6%	73.6%	71.5%	69.4%
Dismissal	2.0%	1.8%	5.0%	2.4%	1.5%	1.5%	3.4%	2.6%
Closure by Clerk	0.0%	0.0%	3.5%	0.0%	0.0%	0.0%	0.2%	0.1%
Others	25.3%	25.4%	25.2%	27.0%	23.9%	24.8%	24.9%	27.9%
<b>Guardianship: # Resolved</b>	<b>219</b>	<b>176</b>	<b>212</b>	<b>232</b>	<b>218</b>	<b>214</b>	<b>257</b>	<b>237</b>
Guardian Appointed	58.0%	50.0%	49.1%	54.7%	52.3%	53.3%	54.5%	52.3%
Dismissal	42.0%	50.0%	50.0%	44.8%	47.7%	46.3%	44.0%	45.6%
Closure by Clerk	0.0%	0.0%	0.0%	0.0%	0.0%	0.0%	0.4%	0.0%
Others	0.0%	0.0%	0.9%	0.4%	0.0%	0.5%	1.2%	2.1%
<b>Adoption: # Resolved</b>	<b>190</b>	<b>95</b>	<b>123</b>	<b>146</b>	<b>155</b>	<b>87</b>	<b>152</b>	<b>110</b>
Resolved by Trial	0.0%	0.0%	0.8%	0.7%	0.0%	0.0%	2.6%	0.9%
Uncontested	0.0%	9.5%	1.6%	3.4%	0.7%	10.3%	5.3%	7.3%
Settlement /Dismissal	100%	90.5%	95.9%	95.2%	98.7%	88.5%	92.1%	90.9%
Closure by Clerk	0.0%	0.0%	1.6%	0.0%	0.0%	1.2%	0.0%	0.0%
Others	0.0%	0.0%	0.0%	0.7%	0.7%	0.0%	0.0%	1.8%
<b>Paternity: # Resolved</b>	<b>230</b>	<b>265</b>	<b>247</b>	<b>242</b>	<b>234</b>	<b>264</b>	<b>231</b>	<b>193</b>
Resolved by Trial	0.4%	0.4%	0.8%	0.8%	1.7%	0.4%	0.9%	0.5%
Summary Judgment	49.1%	48.3%	51.4%	42.2%	49.2%	48.9%	25.1%	50.8%
Default/ Uncontested	25.2%	22.6%	23.5%	33.1%	23.9%	25.8%	32.0%	19.2%
Settlement/Dismissal	25.2%	28.7%	23.9%	24.0%	25.2%	24.6%	28.1%	29.5%
Closure by Clerk	0.0%	0.0%	0.4%	0.0%	0.0%	0.4%	0.0%	0.0%
Others	0.0%	0.0%	0.0%	0.0%	0.0%	0.0%	0.0%	0.0%

Reflecting all documents received by 10/15/2014.

Table 2 (cont.). Number of Cases Resolved and Resolution Category (%)

King County Superior Court

Reporting Category	Q4/12	Q1/13	Q2/13	Q3/13	Q4/13	Q1/14	Q2/14	Q3/14*
<b>Mental Illness: # Resolved</b>	<b>844</b>	<b>754</b>	<b>893</b>	<b>1113</b>	<b>1125</b>	<b>859</b>	<b>996</b>	<b>1016</b>
Court Decision to Commit	68.3%	70.9%	70.1%	55.0%	55.2%	66.5%	63.9%	66.5%
Closed by Court	0.0%	0.0%	0.0%	0.0%	0.0%	0.2%	0.0%	0.0%
Dismissal	24.5%	22.2%	21.3%	21.5%	20.5%	21.0%	20.6%	18.7%
Others	7.2%	7.0%	8.6%	23.5%	24.3%	12.3%	15.6%	14.8%
<b>Juv. DEP/TER: # Resolved</b>	<b>282</b>	<b>294</b>	<b>411</b>	<b>251</b>	<b>231</b>	<b>298</b>	<b>145</b>	<b>369</b>
Finding of Dependency	68.4%	69.7%	76.6%	74.5%	65.4%	72.2%	72.7%	76.4%
Dismissal	30.5%	29.9%	21.2%	23.5%	32.9%	27.2%	27.3%	23.6%
Others	1.1%	0.3%	2.2%	2.0%	1.7%	0.7%	0.0%	0.0%
<b>Juv. ARY/CHINS/OTHER:# Resolved</b>	<b>42</b>	<b>62</b>	<b>69</b>	<b>45</b>	<b>50</b>	<b>68</b>	<b>61</b>	<b>66</b>
Approve of Petition	50.0%	45.2%	60.9%	60.0%	56.0%	64.7%	57.4%	65.1%
Dismissal	50.0%	54.8%	37.7%	37.8%	42.0%	35.3%	42.6%	34.9%
Others	0.0%	0.0%	1.5%	2.2%	2.0%	0.0%	0.0%	0.0%
<b>Juvenile Truancy: # Resolved</b>	<b>192</b>	<b>302</b>	<b>226</b>	<b>296</b>	<b>336</b>	<b>189</b>	<b>109</b>	<b>298</b>
Approve of Petition	18.8%	36.4%	40.3%	0.3%	13.4%	48.7%	72.5%	0.7%
Dismissal	81.3%	63.6%	59.7%	99.7%	86.6%	51.3%	24.8%	99.3%
Others	0.0%	0.0%	0.0%	0.0%	0.0%	0.0%	2.8%	0.0%
<b>Juvenile Offender: # Resolved</b>	<b>522</b>	<b>511</b>	<b>501</b>	<b>491</b>	<b>441</b>	<b>465</b>	<b>413</b>	<b>429</b>
Resolved by Trial (Fact Finding)	6.3%	12.0%	11.2%	6.1%	7.5%	3.9%	7.8%	7.2%
Resolved by Guilty Plea	40.8%	40.9%	36.7%	35.2%	39.5%	41.3%	34.1%	30.8%
Dismissal	37.9%	27.2%	28.5%	41.6%	32.4%	35.5%	43.6%	37.8%
Deferred Disposition (DDSP)	12.8%	16.6%	16.6%	14.3%	16.1%	16.8%	11.1%	19.8%
Others (including Deferred Prosecution)	2.1%	3.3%	7.0%	0.0%	4.5%	2.6%	3.4%	4.4%
<b>Criminal RALJ: # Resolved</b>	<b>51</b>	<b>38</b>	<b>45</b>	<b>46</b>	<b>54</b>	<b>41</b>	<b>48</b>	<b>41</b>
RALJ Decision	51.0%	60.5%	66.7%	58.7%	63.0%	73.2%	72.9%	56.1%
Dismissal	29.4%	34.2%	31.1%	39.1%	33.3%	24.4%	25.0%	36.6%
Others	19.6%	5.3%	2.2%	2.2%	3.7%	2.4%	2.1%	7.3%
<b>Civil RALJ: # Resolved</b>	<b>17</b>	<b>19</b>	<b>22</b>	<b>13</b>	<b>6</b>	<b>15</b>	<b>11</b>	<b>14</b>
RALJ Decision	30.8%	15.8%	50.0%	61.5%	50.0%	40.0%	63.6%	71.4%
Dismissal	69.2%	84.2%	50.0%	38.5%	50.0%	46.7%	27.3%	21.4%
Others	0.0%	0.0%	0.0%	0.0%	0.0%	13.3%	9.1%	7.2%

\* Reflecting all documents received by 10/15/2014.

Chart 2-A. Quarterly Resolutions  
Total Judicial Cases Only ("Matters Filed with Clerk" excluded)

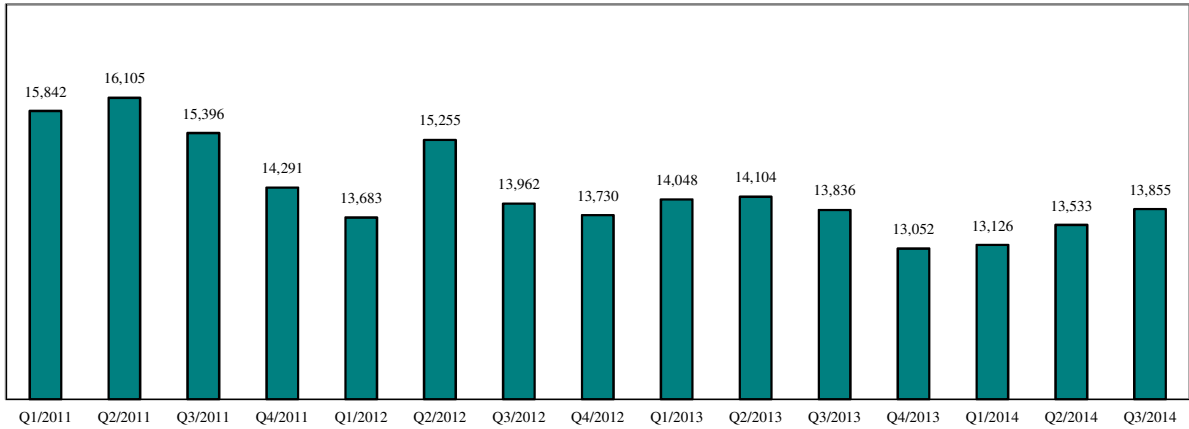
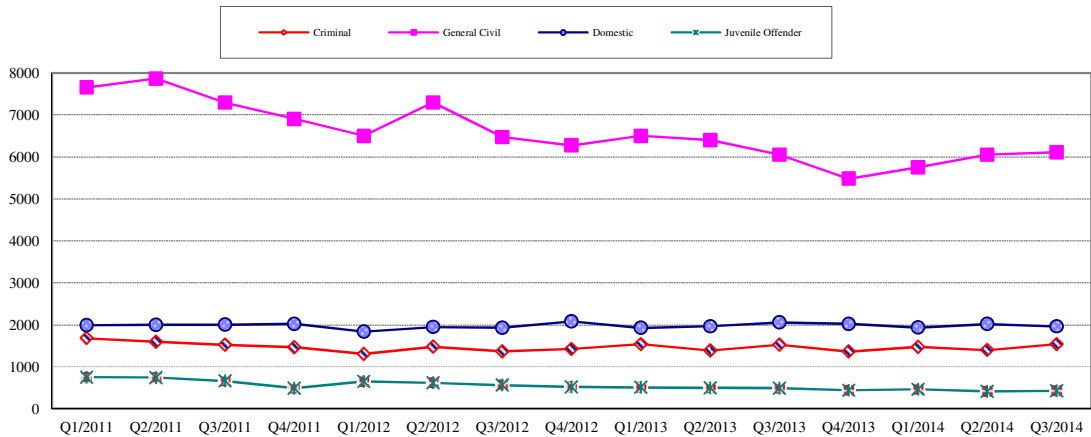


Chart 2-B. Quarterly Resolutions: Criminal, Dmestic, General Civil and Juvenile Offender Cases Only



\* Note: "General Civil" is specifically defined in this report. The category of "General Civil" does **not** include the following case types: domestic, probate, guardianship, adoption, paternity, mental illness, juvenile cases (dependency, at-risk youth, child-in-need of service), civil RALJ, and tax filings that don't require judicial resources ("matters filed with clerk"). Please check the Appendix for the cause codes in the "General Civil" category.

Table 3. Age of Resolved Cases  
King County Superior Court

Reporting Category	Age of Cases at Resolution							
	Q4/12	Q1/13	Q2/13	Q3/13	Q4/13	Q1/14	Q2/14	Q3/14*
<b>Criminal (excl. RALJ)</b>								
Age (days)								
50% Cases Resolved by Day	112	120	110	116	117	118	117	117
90% Cases Resolved by Day	309	346	398	371	359	378	360	345
<b>Comparison with Court Standard of</b>								
90% in 4 months	54%	50%	54%	52%	51%	51%	51%	51%
98% in 6 months	73%	69%	69%	69%	69%	69%	67%	71%
100% in 9 months	87%	84%	82%	84%	84%	83%	83%	84%
<b>General Civil <sup>(1)</sup></b>								
Age (days)								
50% Cases Resolved by Day	29	28	27	29	38	42	36	31
90% Cases Resolved by Day	504	512	515	496	484	520	468	435
<b>Comparison with Court Standard of</b>								
90% in 12 months	83%	80%	83%	83%	83%	81%	84%	85%
98% in 18 months	92%	92%	92%	93%	93%	91%	94%	95%
100% in 24 months	98%	98%	97%	97%	97%	96%	98%	98%
<b>Domestic</b>								
Age (days)								
50% Cases Resolved by Day	170	181	164	150	155	175	181	148
90% Cases Resolved by Day	391	387	380	371	379	373	376	363
<b>Comparison with Court Standard of</b>								
90% in 8 months	64%	63%	66%	67%	66%	62%	64%	68%
98% in 10 months	73%	71%	75%	84%	75%	73%	75%	76%
100% in 14 months	97%	92%	92%	94%	94%	94%	93%	94%
<b>Probate</b>								
Age (days)								
50% Cases Resolved by Day	0	0	0	0	0	0	0	0
90% Cases Resolved by Day	4	4	311	7	6	5	21	15
<b>Comparison with Court Standard of</b>								
90% in 8 months	98%	98%	89%	98%	99%	99%	98%	97%
98% in 18 months	99%	100%	91%	100%	100%	100%	99%	100%
100% in 36 months	99%	100%	94%	100%	100%	100%	100%	100%
<b>Guardianship</b>								
Age (days)								
50% Cases Resolved by Day	57	61	59	63	63	66	59	67
90% Cases Resolved by Day	166	259	342	247	172	223	221	322
<b>Comparison with Court Standard of</b>								
90% in 8 months	93%	90%	87%	90%	91%	93%	91%	89%
98% in 18 months	98%	94%	97%	97%	100%	100%	97%	97%
100% in 36 months	100%	99%	99%	98%	100%	100%	99%	100%
<b>Adoption</b>								
Age (days)								
50% Cases Resolved by Day	52	93	108	65	49	45	88	40
90% Cases Resolved by Day	206	700	863	591	215	185	593	943
<b>Comparison with Court Standard of</b>								
90% in 8 months	92%	69%	74%	74%	92%	92%	74%	86%
98% in 10 months	93%	75%	76%	75%	95%	92%	77%	89%
100% in 14 months	94%	81%	77%	78%	95%	95%	81%	89%
<b>Paternity</b>								
Age (days)								
50% Cases Resolved by Day	155	173	180	165	181	190	154	155
90% Cases Resolved by Day	272	273	296	271	300	273	288	292
<b>Comparison with Court Standard of</b>								
90% in 8 months	84%	80%	79%	63%	74%	76%	84%	83%
98% in 10 months	93%	93%	91%	76%	91%	95%	93%	94%
100% in 14 months	98%	100%	98%	98%	97%	98%	96%	97%



Table 3 (cont.) Age of Resolved Cases  
King County Superior Court

Reporting Category	Age of Cases at Resolution							
	Q4/12	Q1/13	Q2/13	Q3/13	Q4/13	Q1/14	Q2/14	Q3/14*
<b>Mental Illness**</b>								
Age (days)								
50% Cases Resolved by Day	3	2	3	4	4	3	3	2
90% Cases Resolved by Day	10	9	9	333	287	10	13	10
<b>Juvenile DEP/TER</b>								
Age (days)								
50% Cases Resolved by Day	104	93	188	84	101	141	112	117
90% Cases Resolved by Day	839	487	821	218	296	446	259	387
<b>Comparison with Court Standard of</b>								
90% in 8 months	81%	77%	56%	93%	89%	80%	89%	76%
98% in 10 months	84%	83%	59%	94%	92%	83%	94%	82%
100% in 14 months	86%	88%	72%	95%	94%	87%	99%	92%
<b>Juv ARY/CHINS/OTHER</b>								
Age (days)								
50% Cases Resolved by Day	73	55	41	39	44	48	24	35
90% Cases Resolved by Day	282	238	692	235	112	1058	109	235
<b>Comparison with Court Standard of</b>								
90% in 8 months	85%	90%	82%	91%	94%	83%	95%	93%
98% in 10 months	89%	93%	85%	91%	94%	86%	99%	100%
100% in 14 months	95%	98%	87%	96%	98%	86%	100%	100%
<b>Juvenile Truancy**</b>								
Age (days)								
50% Cases Resolved by Day	27	32	22	25	67	39	30	36
90% Cases Resolved by Day	198	85	60	100	177	150	94	148
<b>Juvenile Offender</b>								
Age (days)								
50% Cases Resolved by Day	73	83	73	78	77	71	78	66
90% Cases Resolved by Day	258	221	243	223	217	195	250	236
<b>Comparison with Court Standard of</b>								
90% in 4 months	75%	69%	70%	69%	71%	76%	67%	72%
98% in 6 months	86%	85%	81%	84%	83%	88%	78%	84%
100% in 9 months	93%	94%	91%	93%	94%	95%	91%	91%
<b>Criminal RALJ</b>								
Age (days)								
50% Cases Resolved by Day	254	258	283	275	286	264	282	228
90% Cases Resolved by Day	382	413	433	447	467	371	482	353
<b>Civil RALJ</b>								
Age (days)								
50% Cases Resolved by Day	202	171	266	165	176	157	175	186
90% Cases Resolved by Day	1030	704	373	400	199	246	329	299

\* Reflecting all documents received by 10/15/2014.

\*\* No standard yet.

Table 4. Active Pending Caseload Statistics  
King County Superior Court

Reporting Category	Q4/12	Q1/13	Q2/13	Q3/13	Q4/13	Q1/14	Q2/14	Q3/14*
<b>Total (incl. RALJ)</b>								
Previous Pending (+)	19729	19396	19221	19064	18930	18749	18514	19112
New Filing (+)	13064	13636	13487	13092	12510	12743	13787	12997
Resolved (-)	13730	14048	14104	13836	13052	13126	13573	13855
<b>End Pending</b>	<b>19396</b>	<b>19221</b>	<b>19064</b>	<b>18930</b>	<b>18794</b>	<b>18514</b>	<b>19112</b>	<b>18951</b>
<b>Resolution Rate**</b>	<b>1.051</b>	<b>1.030</b>	<b>1.048</b>	<b>1.057</b>	<b>1.043</b>	<b>1.023</b>	<b>0.982</b>	<b>1.066</b>
<b>Criminal (excl. RALJ)</b>								
Previous Pending (+)	2860	2780	2673	2828	2752	2865	2883	2966
New Filing (+)	1305	1490	1495	1460	1599	1587	1590	1465
Resolved (-)	1423	1539	1388	1524	1364	1475	1440	1540
<b>End Pending</b>	<b>2780</b>	<b>2673</b>	<b>2828</b>	<b>2752</b>	<b>2865</b>	<b>2883</b>	<b>2966</b>	<b>2923</b>
<b>Resolution Rate**</b>	<b>1.090</b>	<b>1.033</b>	<b>0.928</b>	<b>1.044</b>	<b>0.853</b>	<b>0.929</b>	<b>0.881</b>	<b>1.051</b>
<b>General Civil</b>								
Previous Pending (+)	8611	8431	8112	7914	8003	8003	7518	7542
New Filing (+)	5650	5834	5827	5701	4974	5122	5704	5527
Resolved (-)	6274	6503	6402	6054	5478	5751	6055	6111
<b>End Pending</b>	<b>8431</b>	<b>8112</b>	<b>7914</b>	<b>8005</b>	<b>7844</b>	<b>7518</b>	<b>7542</b>	<b>7336</b>
<b>Resolution Rate**</b>	<b>1.110</b>	<b>1.115</b>	<b>1.099</b>	<b>1.062</b>	<b>1.101</b>	<b>1.123</b>	<b>1.062</b>	<b>1.106</b>
<b>Asbestos Cases (civil) <sup>(1)</sup></b>								
Previous Pending (+)	71	76	81	80	81	92	77	70
New Filing (+)	7	19	18	10	14	9	7	14
Resolved (-)	31	15	20	9	4	26	13	14
<b>End Pending</b>	<b>76</b>	<b>81</b>	<b>80</b>	<b>81</b>	<b>92</b>	<b>77</b>	<b>70</b>	<b>71</b>
<b>Resolution Rate**</b>	<b>4.429</b>	<b>0.789</b>	<b>1.111</b>	<b>0.900</b>	<b>0.286</b>	<b>2.889</b>	<b>1.857</b>	<b>1.000</b>
<b>Domestic</b>								
Previous Pending (+)	4637	4458	4562	4580	4650	4486	4499	4609
New Filing (+)	1818	2011	1979	2103	1803	1903	2110	2124
Resolved (-)	2081	1928	1965	2055	2023	1933	2022	1963
<b>End Pending</b>	<b>4458</b>	<b>4562</b>	<b>4580</b>	<b>4650</b>	<b>4486</b>	<b>4499</b>	<b>4609</b>	<b>4802</b>
<b>Resolution Rate**</b>	<b>1.145</b>	<b>0.959</b>	<b>0.998</b>	<b>0.977</b>	<b>1.122</b>	<b>1.016</b>	<b>0.958</b>	<b>0.924</b>
<b>Probate</b>								
Previous Pending (+)	655	615	696	588	650	768	850	861
New Filing (+)	1365	1606	1444	1352	1429	1501	1509	1474
Resolved (-)	1336	1547	1580	1319	1333	1441	1520	1454
<b>End Pending</b>	<b>615</b>	<b>696</b>	<b>588</b>	<b>650</b>	<b>768</b>	<b>850</b>	<b>861</b>	<b>902</b>
<b>Resolution Rate**</b>	<b>0.979</b>	<b>0.963</b>	<b>1.094</b>	<b>0.976</b>	<b>0.933</b>	<b>0.960</b>	<b>1.007</b>	<b>0.986</b>
<b>Guardianship</b>								
Previous Pending (+)	274	248	279	302	310	303	334	320
New Filing (+)	215	210	234	237	209	245	241	232
Resolved (-)	219	176	212	232	218	214	257	237
<b>End Pending</b>	<b>248</b>	<b>279</b>	<b>302</b>	<b>310</b>	<b>303</b>	<b>334</b>	<b>320</b>	<b>316</b>
<b>Resolution Rate**</b>	<b>1.019</b>	<b>0.838</b>	<b>0.906</b>	<b>0.979</b>	<b>1.043</b>	<b>0.873</b>	<b>1.066</b>	<b>1.022</b>
<b>Adoption</b>								
Previous Pending (+)	240	199	222	200	187	187	200	158
New Filing (+)	149	115	101	133	134	121	110	103
Resolved (-)	190	95	123	146	155	87	152	110
<b>End Pending</b>	<b>199</b>	<b>222</b>	<b>200</b>	<b>187</b>	<b>166</b>	<b>200</b>	<b>158</b>	<b>151</b>
<b>Resolution Rate**</b>	<b>1.275</b>	<b>0.826</b>	<b>1.218</b>	<b>1.098</b>	<b>1.157</b>	<b>0.719</b>	<b>1.382</b>	<b>1.068</b>
<b>Paternity</b>								
Previous Pending (+)	448	500	479	506	500	446	384	338
New Filing (+)	273	246	273	235	177	197	179	146
Resolved (-)	230	265	247	242	234	264	231	193
<b>End Pending</b>	<b>500</b>	<b>479</b>	<b>506</b>	<b>500</b>	<b>446</b>	<b>384</b>	<b>338</b>	<b>295</b>
<b>Resolution Rate**</b>	<b>0.842</b>	<b>1.077</b>	<b>0.905</b>	<b>1.030</b>	<b>1.322</b>	<b>1.340</b>	<b>1.291</b>	<b>1.322</b>

\* Reflecting all documents received by 10/15/2014.

\*\* A value of "Resolution Rate" less than one indicates the resolution pace is slower than the filing pace.

Table 4 (cont.) Active Pending Caseload Statistics  
King County Superior Court

Reporting Category		Q4/12	Q1/13	Q2/13	Q3/13	Q4/13	Q1/14	Q2/14	Q3/14*
<b>Mental Illness</b>									
Previous Pending	(+)	281	311	378	390	294	104	119	137
New Filing	(+)	894	820	904	1019	935	876	1014	996
Resolved	(-)	844	754	893	1113	1125	859	996	1016
<b>End Pending</b>		<b>311</b>	<b>378</b>	<b>390</b>	<b>294</b>	<b>104</b>	<b>119</b>	<b>137</b>	<b>120</b>
<b>Resolution Rate**</b>		<b>0.944</b>	<b>0.920</b>	<b>0.988</b>	<b>1.092</b>	<b>1.203</b>	<b>0.981</b>	<b>0.982</b>	<b>1.020</b>
<b>Juvenile DEP/TER</b>									
Previous Pending	(+)	523	516	492	419	447	507	537	657
New Filing	(+)	289	246	302	273	282	302	364	267
Resolved	(-)	282	294	411	251	231	298	245	369
<b>End Pending</b>		<b>516</b>	<b>492</b>	<b>419</b>	<b>447</b>	<b>507</b>	<b>537</b>	<b>657</b>	<b>557</b>
<b>Resolution Rate**</b>		<b>0.976</b>	<b>1.195</b>	<b>1.361</b>	<b>0.920</b>	<b>0.819</b>	<b>0.987</b>	<b>0.673</b>	<b>1.382</b>
<b>Juv ARY/CHINS/OTHER</b>									
Previous Pending	(+)	89	104	101	75	86	94	105	111
New Filing	(+)	52	55	37	51	58	76	68	67
Resolved	(-)	42	62	69	45	50	68	61	66
<b>End Pending</b>		<b>104</b>	<b>101</b>	<b>75</b>	<b>86</b>	<b>94</b>	<b>105</b>	<b>111</b>	<b>114</b>
<b>Resolution Rate**</b>		<b>0.808</b>	<b>1.127</b>	<b>1.865</b>	<b>0.880</b>	<b>0.862</b>	<b>0.895</b>	<b>0.897</b>	<b>0.985</b>
<b>Juvenile Truancy</b>									
Previous Pending	(+)	208	308	382	467	210	326	315	508
New Filing	(+)	446	533	361	10	331	390	348	27
Resolved	(-)	192	302	226	296	336	189	109	298
<b>End Pending</b>		<b>308</b>	<b>382</b>	<b>467</b>	<b>210</b>	<b>326</b>	<b>315</b>	<b>508</b>	<b>477</b>
<b>Resolution Rate**</b>		<b>0.430</b>	<b>0.567</b>	<b>0.626</b>	<b>29.600</b>	<b>1.015</b>	<b>0.485</b>	<b>0.313</b>	<b>11.037</b>
<b>Juvenile Offender</b>									
Previous Pending	(+)	655	663	588	546	587	612	518	668
New Filing	(+)	532	405	452	449	497	363	494	500
Resolved	(-)	522	511	501	491	441	465	413	429
<b>End Pending</b>		<b>663</b>	<b>588</b>	<b>546</b>	<b>587</b>	<b>612</b>	<b>518</b>	<b>668</b>	<b>716</b>
<b>Resolution Rate**</b>		<b>0.981</b>	<b>1.262</b>	<b>1.108</b>	<b>1.094</b>	<b>0.887</b>	<b>1.281</b>	<b>0.836</b>	<b>0.858</b>
<b>Criminal RALJ</b>									
Previous Pending	(+)	134	142	144	147	147	143	146	133
New Filing	(+)	55	40	48	44	48	43	33	46
Resolved	(-)	51	38	45	46	54	41	48	41
<b>End Pending</b>		<b>142</b>	<b>144</b>	<b>147</b>	<b>147</b>	<b>143</b>	<b>146</b>	<b>133</b>	<b>138</b>
<b>Resolution Rate**</b>		<b>0.927</b>	<b>0.950</b>	<b>0.938</b>	<b>1.045</b>	<b>1.125</b>	<b>0.953</b>	<b>1.455</b>	<b>0.891</b>
<b>Civil RALJ</b>									
Previous Pending	(+)	43	45	32	22	24	38	29	34
New Filing	(+)	14	6	12	15	20	8	16	9
Resolved	(-)	13	19	22	13	6	15	11	14
<b>End Pending</b>		<b>45</b>	<b>32</b>	<b>22</b>	<b>24</b>	<b>38</b>	<b>29</b>	<b>34</b>	<b>30</b>
<b>Resolution Rate**</b>		<b>0.929</b>	<b>3.167</b>	<b>1.833</b>	<b>0.867</b>	<b>0.300</b>	<b>1.875</b>	<b>0.688</b>	<b>1.556</b>

\* Reflecting all documents received by 10/15/2014.

\*\* A value of "Resolution Rate" less than one indicates the resolution pace is slower than the filing pace.

Chart 4-A. Active Pending Caseload at Quarter End  
Total Judicial Cases Only ("Matters Filed with Clerk" excluded)

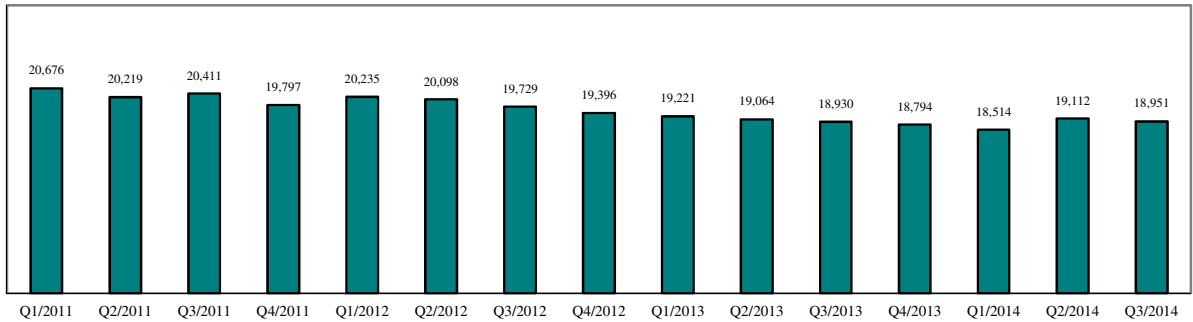


Chart 4-B. Active Pending Caseload at Quarter End: Domestic and General Civil Cases Only

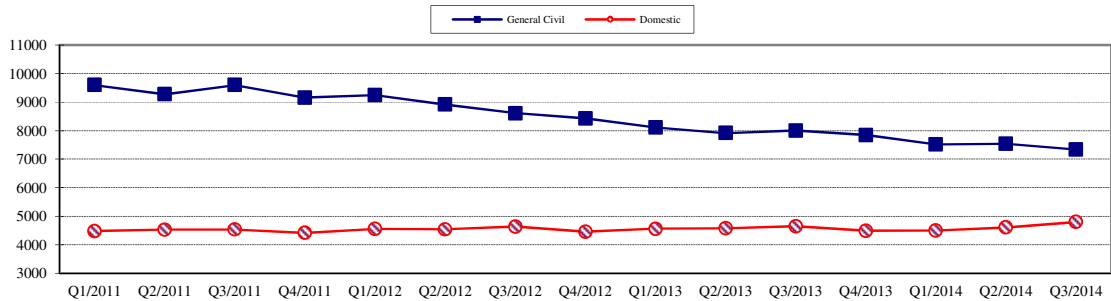
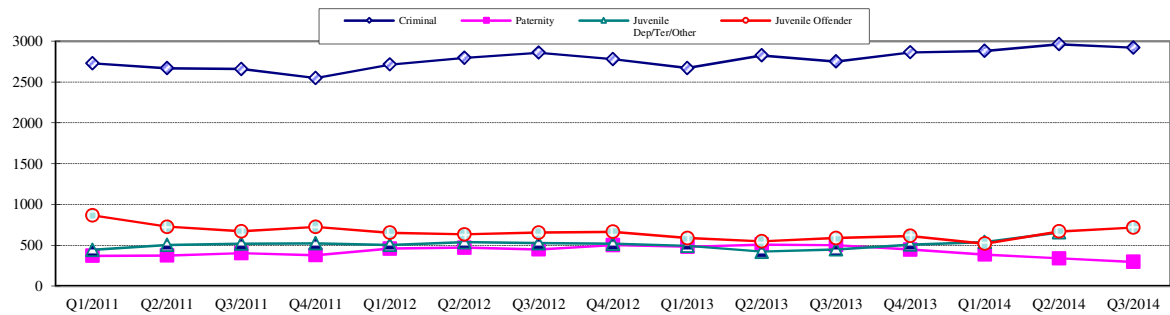


Chart 4-C. Active Pending Caseload at Quarter End:  
Criminal, Juvenile Offender, Paternity and Dependency Cases Only



\* Note: "General Civil" is specifically defined in this report. The category of "General Civil" does **not** include the following case types: domestic, probate, guardianship, adoption, paternity, mental illness, juvenile cases (dependency, at-risk youth, child-in-need of service), civil RALJ, and tax filings that don't require judicial resources ("matters filed with clerk"). Please check the Appendix for the cause codes in the "General Civil" category.

Table 5. Age of Pending Cases

King County Superior Court

Reporting Category	Age of Pending Cases and # of Cases in Each Age Interval							
	Q4/12	Q1/13	Q2/13	Q3/13	Q4/13	Q1/14	Q2/14	Q3/14*
<b>Criminal (excl. RALJ): # of Cases</b>	<b>2780</b>	<b>2673</b>	<b>2828</b>	<b>2752</b>	<b>2865</b>	<b>2883</b>	<b>2966</b>	<b>2923</b>
<b>Age (days)</b>								
Median (50 percentile)	126	116	111	117	111	110	106	120
95 percentile	706	695	703	745	771	750	754	785
<b># of Cases in Age Interval</b>								
0 - 60 days (0 - 2 months)	760	833	889	861	867	966	896	854
61 - 120 days (3 - 4 months)	590	546	599	568	650	581	743	616
121 - 180 days (5 - 6 months)	422	315	382	373	366	378	380	435
181 - 270 days (7 - 9 months)	363	324	296	346	333	328	326	377
> 270 days (> 9 months)	645	655	662	604	649	630	621	641
<b>General Civil: # of Cases</b>	<b>8431</b>	<b>8112</b>	<b>7914</b>	<b>8005</b>	<b>7844</b>	<b>7518</b>	<b>7542</b>	<b>7336</b>
<b>Age (days)</b>								
Median (50 percentile)	189	179	168	165	174	172	144	153
95 percentile	641	637	633	634	658	594	566	577
<b># of Cases in Age Interval</b>								
0 - 120 days (0 - 4 months)	3108	3112	3212	3230	3018	2984	3380	3142
121 - 240 days (5 - 8 months)	1804	1710	1606	1829	1796	1965	1586	1793
241 - 360 days (9 - 12 months)	1332	1238	1216	1151	1250	1239	1176	1035
361 - 540 days (13 - 18 months)	1410	1333	1235	1138	1083	1089	941	923
541 - 720 days (19 - 24 months)	487	419	373	357	378	305	290	258
> 720 days (> 24 months)	290	300	272	300	319	206	169	185
<b>Asbestos Cases (civil)<sup>(1)</sup> : # of Cases</b>	<b>76</b>	<b>81</b>	<b>80</b>	<b>81</b>	<b>92</b>	<b>77</b>	<b>70</b>	<b>71</b>
<b>Age (days)</b>								
Median (50 percentile)	524	388	280	264	296	351	372	371
95 percentile	3168	3244	3342	2441	2533	778	851	897
<b># of Cases in Age Interval</b>								
0 - 120 days (0 - 4 months)	7	20	26	17	18	10	12	13
121 - 240 days (5 - 8 months)	10	10	10	21	13	15	10	11
241 - 360 days (9 - 12 months)	11	8	12	9	23	14	11	9
361 - 540 days (13 - 18 months)	11	11	11	13	14	25	22	14
541 - 720 days (19 - 24 months)	7	6	2	5	8	7	8	17
> 720 days (> 24 months)	30	26	19	16	16	6	7	7
<b>Domestic: # of Cases</b>	<b>4458</b>	<b>4562</b>	<b>4580</b>	<b>4650</b>	<b>4486</b>	<b>4499</b>	<b>4609</b>	<b>4802</b>
<b>Age (days)</b>								
Median (50 percentile)	125	117	116	112	127	130	109	112
95 percentile	528	502	508	517	527	557	548	548
<b># of Cases in Age Interval</b>								
0 - 120 days (0 - 4 months)	2158	2327	2361	2443	2181	2182	2486	2555
121 - 240 days (5 - 8 months)	1185	1218	1128	1207	1214	1241	1065	1221
241 - 360 days (9 - 12 months)	675	589	688	568	644	595	601	533
361 - 540 days (13 - 18 months)	227	221	198	215	229	248	223	246
> 540 days (> 18 months)	213	207	205	217	218	233	234	247
<b>Probate: # of Cases</b>	<b>615</b>	<b>696</b>	<b>588</b>	<b>650</b>	<b>768</b>	<b>850</b>	<b>861</b>	<b>905</b>
<b>Age (days)</b>								
Median (50 percentile)	697	559	403	415	382	418	494	538
95 percentile	2335	2371	1970	2021	2063	2085	2164	2241
<b># of Cases in Age Interval</b>								
0 - 120 days (0 - 4 months)	109	144	133	142	192	173	153	140
121 - 240 days (5 - 8 months)	67	74	92	84	93	134	95	115
241 - 360 days (9 - 12 months)	59	64	52	74	83	82	104	66
361 - 540 days (13 - 18 months)	47	60	70	81	89	112	113	134
> 540 days (> 18 months)	333	354	241	269	311	349	396	450

Reflecting all documents received by 10/15/2014.

Table 5 (cont.). Age of Pending Cases

King County Superior Court

Reporting Category	Age of Pending Cases and # of Cases in Each Age Interval							
	Q4/12	Q1/13	Q2/13	Q3/13	Q4/13	Q1/14	Q2/14	Q3/14*
<b>Guardianship: # of Cases</b>	<b>248</b>	<b>279</b>	<b>302</b>	<b>310</b>	<b>303</b>	<b>334</b>	<b>320</b>	<b>316</b>
Age (days)								
Median (50 percentile)	69	73	65	76	103	83	91	100
95 percentile	543	560	474	489	575	580	657	744
<b># of Cases in Age Interval</b>								
0 - 120 days (0 - 4 months)	157	172	199	190	166	198	181	172
121 - 240 days (5 - 8 months)	36	49	41	50	52	43	45	44
241 - 360 days (9 - 12 months)	21	24	30	37	35	30	25	32
361 - 540 days (13 - 18 months)	21	19	18	21	31	43	37	31
> 540 days (> 18 months)	13	15	14	12	19	20	32	37
<b>Adoption: # of Cases</b>	<b>199</b>	<b>222</b>	<b>200</b>	<b>187</b>	<b>166</b>	<b>200</b>	<b>158</b>	<b>151</b>
Age (days)								
Median (50 percentile)	271	216	151	137	155	159	120	127
95 percentile	1706	1393	1467	1383	1629	1526	1562	832
<b># of Cases in Age Interval</b>								
0 - 120 days (0 - 4 months)	55	88	90	89	72	86	81	71
121 - 240 days (5 - 8 months)	34	30	23	36	23	38	25	35
241 - 360 days (9 - 12 months)	28	24	19	14	20	14	19	14
361 - 540 days (13 - 18 months)	21	27	28	19	19	24	9	14
> 540 days (> 18 months)	61	53	40	29	32	38	24	17
<b>Paternity: # of Cases</b>	<b>500</b>	<b>479</b>	<b>506</b>	<b>500</b>	<b>446</b>	<b>384</b>	<b>338</b>	<b>295</b>
Age (days)								
Median (50 percentile)	92	102	87	106	119	91	96	100
95 percentile	251	294	279	305	279	320	327	334
<b># of Cases in Age Interval</b>								
0 - 120 days (0 - 4 months)	303	262	327	309	230	237	210	173
121 - 240 days (5 - 8 months)	165	176	135	147	179	112	92	88
241 - 360 days (9 - 12 months)	25	32	35	30	24	22	23	23
361 - 540 days (13 - 18 months)	5	8	7	12	11	9	10	5
> 540 days (> 18 months)	2	1	2	2	2	4	3	6
<b>Mental Illness: # of Cases</b>	<b>311</b>	<b>378</b>	<b>390</b>	<b>294</b>	<b>104</b>	<b>119</b>	<b>137</b>	<b>120</b>
Age (days)								
Median (50 percentile)	104	172	256	259	197	70	50	113
95 percentile	1595	1595	1680	1877	2196	546	629	725
<b># of Cases in Age Interval</b>								
0 - 120 days (0 - 4 months)	181	137	79	94	47	66	79	61
121 - 240 days (5 - 8 months)	93	134	95	37	12	10	13	11
> 240 days (> 8 months)	37	107	216	163	45	43	38	48
<b>Juv DEP/TER: # of Cases</b>	<b>516</b>	<b>492</b>	<b>419</b>	<b>447</b>	<b>507</b>	<b>537</b>	<b>657</b>	<b>557</b>
Age (days)								
Median (50 percentile)	113	135	66	77	98	88	88	112
95 percentile	1026	1116	558	610	597	593	580	750
<b># of Cases in Age Interval</b>								
0 - 60 days (0 - 2 months)	169	155	197	182	205	213	248	162
61 - 120 days (3 - 4 months)	103	72	103	93	100	109	159	140
121 - 180 days (5 - 6 months)	39	61	37	71	65	72	75	96
181 - 270 days (7 - 9 months)	50	41	33	35	45	59	63	67
> 270 days (> 9 months)	155	163	49	66	92	84	112	92
<b>Juv. ARY/CHINS/OTHER: # of Cases</b>	<b>104</b>	<b>101</b>	<b>75</b>	<b>86</b>	<b>94</b>	<b>105</b>	<b>111</b>	<b>114</b>
Age (days)								
Median (50 percentile)	209	276	577	413	376	162	222	238
95 percentile	2444	2534	2678	2717	2809	2850	2941	3033
<b># of Cases in Age Interval</b>								
0 - 60 days (0 - 2 months)	24	26	13	19	26	29	32	35
61 - 120 days (3 - 4 months)	17	7	5	12	9	15	8	10
121 - 180 days (5 - 6 months)	5	6	4	1	4	11	12	8
181 - 270 days (7 - 9 months)	11	11	5	4	3	5	11	8
> 270 days (> 9 months)	47	51	48	50	52	45	48	53

\* Reflecting all documents received by 10/15/2014.

Table 5 (cont.). Age of Pending Cases  
King County Superior Court

Reporting Category	Age of Pending Cases and # of Cases in Each Age Interval							
	Q4/12	Q1/13	Q2/13	Q3/13	Q4/13	Q1/14	Q2/14	Q3/14*
<b>Juvenile Truancy: # of Cases</b>	<b>308</b>	<b>382</b>	<b>467</b>	<b>210</b>	<b>326</b>	<b>315</b>	<b>508</b>	<b>477</b>
Age (days)								
Median (50 percentile)	67	26	68	494	167	154	75	159
95 percentile	588	673	620	971	948	1041	837	940
<b># of Cases in Age Interval</b>								
0 - 60 days (0 - 2 months)	151	226	182	11	139	105	190	25
61 - 120 days (3 - 4 months)	18	19	126	6	21	41	112	83
121 - 180 days (5 - 6 months)	0	17	21	28	3	17	24	176
181 - 270 days (7 - 9 months)	93	1	23	32	20	4	32	24
> 270 days (> 9 months)	46	119	115	133	143	148	150	169
<b>Juvenile Offender: # of Cases</b>	<b>663</b>	<b>588</b>	<b>546</b>	<b>587</b>	<b>612</b>	<b>518</b>	<b>668</b>	<b>716</b>
Age (days)								
Median (50 percentile)	77	80	76	81	74	97	75	92
95 percentile	552	681	508	545	517	581	620	545
<b># of Cases in Age Interval</b>								
0 - 60 days (0 - 2 months)	265	250	219	231	267	180	281	232
61 - 120 days (3 - 4 months)	194	114	145	151	133	121	167	201
121 - 180 days (5 - 6 months)	81	76	51	67	79	63	70	103
181 - 270 days (7 - 9 months)	43	63	55	47	45	59	46	75
> 270 days (> 9 months)	80	85	76	91	88	95	104	105
<b>Criminal RALJ: # of Cases</b>	<b>142</b>	<b>144</b>	<b>147</b>	<b>147</b>	<b>143</b>	<b>146</b>	<b>133</b>	<b>138</b>
Age (days)								
Median (50 percentile)	147	160	157	144	141	147	169	154
95 percentile	400	420	392	384	391	400	410	499
<b># of Cases in Age Interval</b>								
0 - 60 days (0 - 2 months)	27	26	34	34	34	31	23	31
61 - 120 days (3 - 4 months)	30	29	27	24	24	33	22	24
121 - 180 days (5 - 6 months)	28	30	24	30	28	23	29	20
181 - 270 days (7 - 9 months)	35	30	33	28	32	31	32	29
> 270 days (> 9 months)	22	29	29	31	25	28	27	34
<b>Civil RALJ: # of Cases</b>	<b>45</b>	<b>32</b>	<b>22</b>	<b>24</b>	<b>38</b>	<b>29</b>	<b>34</b>	<b>30</b>
Age (days)								
Median (50 percentile)	134	192	88	58	84	111	114	117
95 percentile	431	376	375	231	323	334	335	427
<b># of Cases in Age Interval</b>								
0 - 60 days (0 - 2 months)	8	5	5	12	12	7	12	4
61 - 120 days (3 - 4 months)	11	3	9	5	14	10	9	11
121 - 180 days (5 - 6 months)	13	8	3	5	8	7	3	8
181 - 270 days (7 - 9 months)	7	7	2	1	2	2	8	3
> 270 days (> 9 months)	6	9	3	1	2	3	2	4

\* Reflecting all documents received by 10/15/2014.

Table 6. Seattle vs. Regional Justice Center (KNT): Filing, Resolution, Pending Caseload (%)

King County Superior Court

	Q3/13		Q4/13		Q1/14		Q2/14		Q3/14	
	SEA	KNT	SEA	KNT	SEA	KNT	SEA	KNT	SEA	KNT
<b>Filings Total</b> <i>(excl. filings with clerk)</i>	<b>66%</b>	<b>34%</b>	<b>67%</b>	<b>33%</b>	<b>63%</b>	<b>37%</b>	<b>64%</b>	<b>36%</b>	<b>65%</b>	<b>35%</b>
Criminal (excl. RALJ)	60%	40%	60%	40%	52%	48%	51%	49%	55%	45%
General Civil (excl. RALJ)	58%	42%	58%	42%	57%	43%	57%	43%	56%	44%
Domestic	65%	35%	63%	37%	64%	36%	63%	37%	62%	38%
Probate	77%	23%	80%	20%	74%	26%	77%	23%	78%	22%
Guardianship	65%	35%	65%	35%	63%	37%	64%	36%	57%	43%
Adoption	63%	37%	74%	26%	83%	17%	81%	19%	69%	31%
Paternity	49%	51%	41%	59%	49%	51%	46%	54%	41%	59%
Mental Illness	100%	---	100%	---	100%	---	100%	---	100%	---
Juv. DEP/TER/Other	48%	52%	44%	56%	44%	56%	51%	49%	51%	49%
Juvenile ARY/CHINS	37%	63%	52%	48%	46%	54%	60%	40%	45%	55%
Juvenile Truancy	90%	10%	47%	53%	48%	52%	56%	44%	85%	15%
Juvenile Offender	100%	---	100%	---	100%	---	100%	---	100%	---
Criminal RALJ	91%	9%	92%	8%	91%	9%	94%	6%	96%	4%
Civil RALJ	87%	13%	100%	---	100%	---	88%	12%	100%	---
<b>Resolution Total</b> <i>(excl. filings with clerk)</i>	<b>64%</b>	<b>36%</b>	<b>66%</b>	<b>34%</b>	<b>65%</b>	<b>35%</b>	<b>64%</b>	<b>36%</b>	<b>63%</b>	<b>37%</b>
Criminal (excl. RALJ)	54%	46%	59%	41%	58%	42%	55%	45%	53%	47%
General Civil (excl. RALJ)	57%	43%	59%	41%	60%	40%	56%	44%	55%	45%
Domestic	59%	41%	63%	37%	63%	37%	62%	38%	65%	35%
Probate	76%	24%	79%	21%	73%	27%	77%	23%	78%	22%
Guardianship	63%	37%	60%	40%	68%	32%	61%	39%	65%	35%
Adoption	67%	33%	69%	31%	83%	17%	77%	23%	81%	19%
Paternity	40%	60%	45%	55%	45%	55%	46%	54%	47%	53%
Mental Illness	100%	---	100%	---	100%	---	100%	---	100%	---
Juv. DEP/TER/Other	53%	47%	55%	45%	49%	51%	38%	62%	47%	53%
Juvenile ARY/CHINS	40%	60%	48%	52%	53%	47%	51%	49%	44%	56%
Juvenile Truancy	43%	57%	38%	62%	47%	53%	42%	58%	32%	68%
Juvenile Offender	100%	---	100%	---	100%	---	100%	---	100%	---
Criminal RALJ	96%	4%	91%	9%	93%	7%	94%	6%	88%	12%
Civil RALJ	77%	23%	83%	17%	87%	13%	91%	9%	100%	---
<b>Pending Total</b> <i>(excl. filings with clerk)</i>	<b>67%</b>	<b>33%</b>	<b>66%</b>	<b>34%</b>	<b>65%</b>	<b>35%</b>	<b>65%</b>	<b>35%</b>	<b>65%</b>	<b>35%</b>
Criminal (excl. RALJ)	52%	48%	54%	46%	51%	49%	50%	50%	50%	50%
General Civil (excl. RALJ)	69%	31%	69%	31%	67%	33%	67%	33%	68%	32%
Domestic	63%	37%	62%	38%	62%	38%	63%	37%	62%	38%
Probate	84%	16%	83%	17%	84%	16%	82%	18%	83%	17%
Guardianship	63%	37%	67%	33%	63%	37%	65%	35%	59%	41%
Adoption	75%	25%	80%	20%	80%	20%	84%	16%	76%	24%
Paternity	51%	49%	50%	50%	53%	47%	54%	46%	52%	48%
Mental Illness	100%	---	100%	---	100%	---	100%	---	100%	---
Juv. DEP/TER/Other	56%	44%	49%	51%	45%	55%	50%	50%	52%	48%
Juvenile ARY/CHINS	73%	27%	72%	28%	66%	34%	73%	27%	73%	27%
Juvenile Truancy	70%	30%	60%	40%	62%	38%	59%	41%	65%	35%
Juvenile Offender	100%	---	100%	---	100%	---	100%	---	100%	---
Criminal RALJ	91%	9%	91%	9%	90%	10%	90%	10%	93%	7%
Civil RALJ	83%	17%	92%	8%	97%	3%	94%	6%	93%	7%

Reflecting all documents received by 10/15/2014.



Table 7. Quarterly Utilization of Pro Tem Judges/Commissioners <sup>(1)</sup>

Category	Q1/12	Q2/12	Q3/12	Q4/12	Q1/13	Q2/13	Q3/13	Q4/13	Q1/14	Q2/14	Q3/14	
<b>Grand Total</b>	<b>869</b>	<b>1173</b>	<b>1304</b>	<b>864</b>	<b>814</b>	<b>1182</b>	<b>1391</b>	<b>2546</b>	<b>1450</b>	<b>1610</b>	<b>1510</b>	
<b>Judge FTE Equivalent <sup>(3)</sup></b>	<b>1.9</b>	<b>2.6</b>	<b>2.9</b>	<b>1.9</b>	<b>1.8</b>	<b>2.6</b>	<b>3.1</b>	<b>5.7</b>	<b>3.2</b>	<b>3.6</b>	<b>3.4</b>	
<b>By Work Type</b>												
Pro Tem Judge											412	332
Pro Tem Commissioner											1028	1178
Unspecified											170	0
<b>By Location</b>												
KCCH											532	655
MRJC											505	377
Juvenile											282	283
ITA											158	195
Other											133	0
<b>By Calendar Type</b>												
Criminal											128	75
Civil											74	32
Ex Parte											536	333
Family Law/Domestic											309	506
Dependency											217	119
Juvenile Offender											103	144
BECCA											30	20
ITA											158	195
Juvenile Drug Court											9	0
Family Treatment Court											6	0
Plea Calendar											42	71
Status/Non-Compliance											0	6
Other or Unspecified											0	10
<b>By Reason</b>												
Vacation Backfill											565	572
Medical Backfill											112	208
Duty Time											210	249
Conference Coverage											259	229
Congestion											168	80
Vacancy Coverage											263	109
Other											34	64

(1) This table is based on the time sheet for compensation

(2) Judge FTE Equivalent = # of hours / [7.5 hours/day \* 20 days/month \* 3 months] = # of hours/450.

*The statistics on Pro Tem judge/commissioner use provide information on the external help the court has obtained in order to handle the workload. The data are collected on the time sheet for compensation (therefore it does not include unpaid volunteering or visiting judges/commissioners). The database on Pro Tem judges/commissioners is managed by the Administrative Services Department (ASD) of King County Superior Court. The Pro Tem total hours presented in this section are provided quarterly by ASD.*

Table 8. Family Law Activity

<b>SEATTLE</b>	1ST QTR, 2013		2ND QTR, 2013		3RD QTR, 2013		4TH QTR, 2013		1ST QTR, 2014		2ND QTR, 2014		3RD QTR, 2014	
	HRGS	ORDS	HRGS	ORDS	HRGS	ORDS	HRGS	ORDS	HRGS	ORDS	HRGS	ORDS	HRGS	ORDS
FAM.LAW	354	1883	473	1888	481	2227	458	2043	409	1984	463	2076	490	2127
DAILY AVG.	6	31	8	31	8	37	8	33	7	33	8	34	8	35
PATERNITY	55	1571	40	1434	42	1506	49	1207	97	1437	78	1309	61	1133
DAILY AVG.	1	26	1	24	1	25	1	20	2	24	1	21	1	19
DOM. VIOL.	204	513	238	481	250	534	211	439	252	512	229	476	267	563
DAILY AVG.	3	8	4	8	4	9	3	7	4	8	4	8	4	9
<b>KENT</b>														
<b>KENT</b>	1ST QTR, 2013		2ND QTR, 2013		3RD QTR, 2013		4TH QTR, 2013		1ST QTR, 2014		2ND QTR, 2014		3RD QTR, 2014	
	HRGS	ORDS	HRGS	ORDS	HRGS	ORDS	HRGS	ORDS	HRGS	ORDS	HRGS	ORDS	HRGS	ORDS
FAM.LAW	730	1845	451	1635	436	1793	449	1733	382	1685	458	1629	473	1569
DAILY AVG.	12	30	7	27	7	29	7	28	6	28	8	27	8	26
PATERNITY	366	1157	144	1154	82	1227	62	1088	61	1196	51	1008	58	910
DAILY AVG.	6	19	2	19	1	20	1	18	1	20	1	17	1	15
DOM. VIOL.	393	489	370	443	429	546	363	532	332	501	444	567	496	620
DAILY AVG.	6	8	6	7	7	9	6	9	5	8	7	9	8	10
<b>GRAND TOTAL</b>														
<b>GRAND TOTAL</b>	1ST QTR, 2013		2ND QTR, 2013		3RD QTR, 2013		4TH QTR, 2013		1ST QTR, 2014		2ND QTR, 2014		3RD QTR, 2014	
	HRGS	ORDS	HRGS	ORDS	HRGS	ORDS	HRGS	ORDS	HRGS	ORDS	HRGS	ORDS	HRGS	ORDS
<b>TOTAL</b>	2102	7458	1716	7035	1720	7833	1592	7042	1533	7315	1723	7065	1845	6922
<b>OVERALL DAILY AVG.</b>	34	122	28	115	28	128	26	115	25	120	28	116	30	113

The statistics on family law and Ex Parte activity are obtained directly from SCOMIS using the appropriate docket codes.

Table 9. Ex Parte Activity

SEATTLE	3RD QTR, 2013		4TH QTR, 2013		1ST QTR, 2014		2ND QTR, 2014		3RD QTR, 2014	
	HRGS	ORDS	HRGS	ORDS	HRGS	ORDS	HRGS	ORDS	HRGS	ORDS
ADOP/PAT	62	299	104	322	62	216	91	311	68	229
DOM. VIOL.	5	388	9	338	9	373	10	399	8	374
OTH. CIVIL	370	631	323	573	247	531	346	528	315	481
DOMESTIC	731	2284	662	2146	532	1761	566	1994	544	1791
PROB/GDN	1258	2134	1336	2430	1220	2257	1342	2332	1268	2171
SUBTOTAL	2426	5736	2434	5809	2070	5138	2355	5564	2203	5046
DAILY AVG.	40	94	40	95	34	84	39	91	36	83

SEATTLE VIA CLERK (starting Jan 2009)	3RD QTR, 2013		4TH QTR, 2013		1ST QTR, 2014		2ND QTR, 2014		3RD QTR, 2014	
	----	ORDS	----	ORDS	----	ORDS	----	ORDS	----	ORDS
ADOP/PAT	----	101	----	151	----	108	----	115	----	96
DOM. VIOL.	----	4	----	5	----	1	----	3	----	5
OTH. CIVIL	----	5343	----	4997	----	4871	----	4852	----	4844
DOMESTIC	----	1401	----	1397	----	1325	----	1442	----	1429
PROB/GDN	----	805	----	792	----	749	----	819	----	793
SUBTOTAL	----	7654	----	7342	----	7054	----	7231	----	7167
DAILY AVG.	----	125	----	120	----	116	----	119	----	117

SEATTLE MAIL-IN	3RD QTR, 2013		4TH QTR, 2013		1ST QTR, 2014		2ND QTR, 2014		3RD QTR, 2014	
	----	ORDS	----	ORDS	----	ORDS	----	ORDS	----	ORDS
ADOP/PAT	----	4	----	0	----	2	----	3	----	3
DOM. VIOL.	----	0	----	0	----	0	----	0	----	1
OTH. CIVIL	----	167	----	125	----	159	----	100	----	117
DOMESTIC	----	35	----	37	----	35	----	30	----	29
PROB/GDN	----	118	----	65	----	79	----	92	----	66
SUBTOTAL	----	324	----	227	----	275	----	225	----	216
DAILY AVG.	----	5	----	4	----	5	----	4	----	4

Note: Ex Parte via Clerk started in January 2009.

Table 9 (cont). Ex Parte Activity

KENT	3RD QTR, 2013		4TH QTR, 2013		1ST QTR, 2014		2ND QTR, 2014		3RD QTR, 2014	
	HRGS	ORDS	HRGS	ORDS	HRGS	ORDS	HRGS	ORDS	HRGS	ORDS
ADOP/PAT	46	140	48	155	21	82	24	102	23	92
DOM. VIOL.	1	457	4	376	2	444	1	479	3	531
OTH. CIVIL	322	546	263	449	300	466	324	521	332	543
DOMESTIC	463	1620	395	1366	330	1281	319	1282	313	1381
PROB/GDN	457	822	468	894	444	912	486	900	373	759
SUBTOTAL	1289	3585	1178	3240	1097	3185	1154	3284	1044	3306
DAILY AVG.	21	59	19	53	18	52	19	54	17	54

KENT VIA CLERK (starting Jan 2009)	3RD QTR, 2013		4TH QTR, 2013		1ST QTR, 2014		2ND QTR, 2014		3RD QTR, 2014	
	----	ORDS	----	ORDS	----	ORDS	----	ORDS	----	ORDS
ADOP/PAT	----	64	----	39	----	40	----	46	----	39
DOM. VIOL.	----	0	----	3	----	2	----	1	----	2
OTH. CIVIL	----	3254	----	3020	----	2813	----	2665	----	2861
DOMESTIC	----	484	----	479	----	460	----	491	----	525
PROB/GDN	----	256	----	259	----	293	----	277	----	306
SUBTOTAL	----	4058	----	3800	----	3608	----	3480	----	3733
DAILY AVG.	----	67	----	62	----	59	----	57	----	61

KENT MAIL-IN	3RD QTR, 2013		4TH QTR, 2013		1ST QTR, 2014		2ND QTR, 2014		3RD QTR, 2014	
	----	ORDS	----	ORDS	----	ORDS	----	ORDS	----	ORDS
ADOP/PAT	----	1	----	0	----	0	----	2	----	1
DOM. VIOL.	----	0	----	0	----	0	----	0	----	0
OTH. CIVIL	----	34	----	25	----	25	----	34	----	46
DOMESTIC	----	11	----	12	----	14	----	11	----	21
PROB/GDN	----	36	----	27	----	22	----	19	----	31
SUBTOTAL	----	82	----	64	----	61	----	66	----	99
DAILY AVG.	----	1	----	1	----	1	----	1	----	2

ALL SEATTLE AND KENT	3RD QTR, 2013		4TH QTR, 2013		1ST QTR, 2014		2ND QTR, 2014		3RD QTR, 2014	
	HRGS	ORDS	HRGS	ORDS	HRGS	ORDS	HRGS	ORDS	HRGS	ORDS
GRAND TOTAL	3715	21440	3612	20483	3167	19322	3509	19851	3247	19568
DAILY AVERAGE	60.9	351.5	59.2	335.8	51.9	316.8	57.5	325.4	53.2	320.8

Note: Ex Parte via Clerk started in January 2009.

# Appendix Glossary and Definition

## General Definition

### **Active Status**

A case is active if it is not on suspense status (see Suspense Status).

### **Case**

A case is defined as a filing with an assigned case number (or a case number plus a defendant connection code in pre-1990 criminal filings).

### **Completion**

A case is completed when dispositive document is filed with the court following resolution.

### **Jury Trial**

A hearing is reported as a jury trial if the jury is impaneled.

### **New Case**

A new case is an original filing with new case number assigned.

### **Non-Jury Trial**

A hearing is reported as a non-jury trial if an opening statement is made, waived, or reserved. A juvenile fact finding hearings is reported as a non-jury trial.

### **Pending Case**

A case is defined as pending if it is unresolved and active (not in suspense).

### **Reactivated Case**

A case returns to active status from suspense status during the reporting period.

### **Re-opened Cases**

A case is re-opened if it has been previously completed but returns to the court for supplement or change of the original case resolution. A re-opened case does not have a new case number. Only resolved cases can be "re-opened". (Note: measurement not available as of July 1996. SCOMIS capacity may exist after conversion to DB2 in the future).

### **Resolution**

A case is resolved if all issues in the complaint are fully adjudicated.

### **Suspended Case**

A case is placed in suspense status from active status during the reporting period.

### **Suspense Status**

A case is on suspense status if it is on warrant, appeal, stay, mediation, arbitration ("Deferred Prosecution" is not a suspense status, but is treated as a resolution).

### **Trial**

A hearing set before a judge or jury in which all the issues in the case are meant to be resolved. A trial normally includes opening statements to the court or jury stating what the evidence will show, introduction of witnesses and exhibits for direct and cross examination, final arguments to the court or jury in which counsel argue both the evidence and the law, and judgment by the court or jury stating what the facts of the case are and what law applies to the facts. In a jury case, it also includes the selection of the jury. A trial can be held

for one or more cases. A single trial may be held to adjudicate more than one case (as defined above).

### **Post-resolution Modifications**

In this report, we also report the post-resolution modifications for case type 3 (domestic) and 5 (paternity). These numbers are based on the tracks (DMOD and DTBA) opened after the original resolution date (i.e., if the track beginning date is after the resolution date).

## Section I. Filing Activity

### **Additional Filings with Clerk**

Filings with clerk without assigning a SCOMIS case number. This reporting category consists of search warrants, wire taps, extradition, oaths and orders pertaining to Pro Tem judge/commissioners/Court

Reporters/Bailiffs, and other "non-case" filings as recorded under 12050 system.

### **Annual Filings**

Total number of new case filings during the calendar year (January 1 to December 31).

### **Adoption Cases**

This reporting category includes the following "cause-of-action" codes within SCOMIS case type 5:

- Relinquishment (REL)
- Termination of Parent/Child Relationship (TER)
- Adoption (ADP)
- Miscellaneous (MSC)
- Name Change - Confidential (CHN)
- Initial Pre-Placement Report Filed with Clerk (PPR)

### **General Civil Cases**

"General Civil" cases include all civil matters other than Domestic, Probate, Guardianship, Adoption, Paternity and appeals from courts of limited jurisdiction and "Matters Filed with Clerk". "General civil" cases include small claims as identified by the "Small Claim Track". This reporting category includes the following "cause-of-action" codes within SCOMIS case type 2:

- Administrative Law Review (ALR)
- Change of Name - Non-Confidential (CHN)
- Collection (COL)
- Commercial (COM)
- Condemnation (CON)
- Domestic Violence Protection (DVP)
- Emancipation of Minor (EOM)
- Foreclosure (FOR)
- Civil Harassment (HAR)
- Injunction (INJ)
- Other Malpractice (MAL)
- Medical Malpractice (MED)
- Meretricious Relationship (MER)
- Malicious Harassment (MHA)
- Miscellaneous (MSC)
- Minor Settlement (MST) - as of 10/1/96, under Guardianship
- Petition of Civil Commitment- Sexual Predator (PCC)
- Property Fairness (PFA)

- Personal Injury (PIN)
- Property Damage (PRP)
- Quiet Title (QTI)
- Small Claims (LCA/LCI on “Small Claim Track”)
- Seizure of Property from the Commission of a Crime (SPC)
- Seizure of Property Resulting from a Crime (SPR)
- Tort Motor Vehicle (TMV)
- Tort Other (TTO)
- Unlawful Detainer (UND)
- Wrongful Death (WDE)
- Writ of Habeas Corpus (WHC)
- Miscellaneous Writ (WMW)
- Writ of Mandamus (WRM)
- Writ of Restitution (WRR)
- Writ of Review (WRV)

### **Civil RALJ Cases**

Civil appeals from courts of limited jurisdiction (excluding small claims as identified by the “Small Claim Track”). Civil RALJ includes the following “cause-of-action” reporting categories:

- Lower Court Appeal - Civil and “Not a Small Claim”
- Lower Court Appeal - Infraction and “Not a Small Claim”

Note: The Civil RALJ cases are determined based on both SCOMIS “cause-of-action” code (LCA and LCI) within SCOMIS case type 2 and the “Small Claim Track”.

### **Criminal Cases (excl. RALJ)**

Adult criminal cases, excluding appeals from courts of limited jurisdiction. This reporting category includes the following crime categories within SCOMIS case type 1:

- Homicide
- Sex Crime
- Robbery
- Assault
- Theft/Burglary
- Motor Vehicle Theft
- Controlled Substance
- Other Felony
- Others (Misdemeanor, Non-charge Case)

### **Criminal RALJ Cases**

Criminal appeals from courts of limited jurisdiction. This reporting category includes all SCOMIS case type 1 cases that have an appeal from lower court field of “Yes”.

### **Domestic Cases**

This reporting category includes the following “cause-of-action” codes within SCOMIS case type 3:

- Annulment – Invalidity (INV)
- Child Custody (CUS)
- Dissolution With Children Of The Marriage (DIC)
- Dissolution With No Children Of The Marriage (DIN)
- Dissolution of Domestic Partnership – With Children (DPC)
- Dissolution of Domestic Partnership – With No Children (DPN)
- Foreign Judgment (FJU)
- Invalidity – Domestic Partnership (INP)
- Mandatory Wage Assignment (MWA)
- Miscellaneous (MSC)
- Modification (MOD)
- Modification – Support Only (MDS)
- Out-Of-State Child Custody (OSC)
- Parenting Plan / Child Support (PPS)
- Reciprocal, Respondent In-County (RIC)
- Reciprocal, Respondent Out-of-County (ROC)
- Legal Separation (SEP)
- Legal Separation – Domestic Partnership (SPD)

### **Guardianship Cases**

This reporting category includes the following “cause-of-action” codes within SCOMIS case type 4:

- Guardianship/Estate (G/E)
- Guardianship (GND)
- Limited Guardianship (LGD)
- Minor Settlement (MST)

### **Juvenile ARY/CHINS Cases**

Juvenile dependency cases, excluding truancy cases and DEP cause code. This reporting category includes following “cause-of-action” codes within SCOMIS case type 7:

- Alternative Residential Placement (ARP)
- At-Risk Youth (ARY)
- Child in Need of Service (CNS)

### **Juvenile Dependency Cases**

This reporting category includes following “cause-of-action” codes within SCOMIS case type 7:

- Dependency (DEP)
- Termination (TER)
- Developmental Disability (DDP)
- Guardianship Foster Children (GFC)
- Reinstatement of Parental Rights (RPR)
- Extension of Foster Care (EFC)
- Relative Visitation (RVS)

### **Juvenile Offender Cases**

This reporting category includes the following crime categories in SCOMIS case type 8:

- Homicide
- Sex Crime
- Robbery
- Assault
- Theft/Burglary
- Motor Vehicle Theft
- Controlled Substance
- Other Felony
- Others (Misdemeanor, Non-charge Case)

### **Juvenile Truancy Cases**

Mandatory truancy filings started on 10/01/1995. This reporting category includes the following “cause-of-action” code within SCOMIS case type 7:

- Truancy (TRU)

### **Matters Filed with Clerk**

Filings with clerk (case numbers assigned), but requiring little or no judicial action. This reporting category includes the following “cause-of-action” codes within SCOMIS case type 2:

- Abstract of Judgment (ABJ)
- Foreign Judgment (FJU)
- Tax Warrant (TAX)
- Transcripts of Judgment (TRJ)

### **Mental Illness Cases**

This reporting category includes all “cause-of-action” codes within SCOMIS case type 6:

- Alcoholic Treatment (ALT)
- Mental Illness - Adult (MI)
- Mental Illness - Juvenile (MIJ)

### **Paternity Cases**

This reporting category includes the following “cause-of-action” codes within SCOMIS case type 5:

- Modification (MOD)
- Paternity (PAT)
- Paternity/URES/UFSA (PUR)

### **Probate Cases**

This reporting category includes the following “cause-of-action” codes within SCOMIS case type 4:

- Absentee (ABS)
- Disclaimer (DSC)
- Estate (EST)
- Foreign Will (FNW)
- Miscellaneous (MSC)
- Non-Probate Notice to Creditors (NNC)
- Will Only (WLL)

### **Total Cases**

New cases with case numbers assigned, excluding “Matters Filed with Clerk” and “Additional Filings with Clerk”.

### **Year-to-Date Filings**

Total number of new filings since the beginning of calendar year (January 1) to the end of reporting period.

## **Section II. Resolution Category**

### **Adoption - Resolved by Trial**

Court Decision after Non-Jury Trial (CDAT)

### **Adoption - Uncontested**

Consolidated Case (CONS)  
Uncontested Resolution (UNDS)

### **Adoption - Settlement/Dismissal**

Closed by Court Order after a Hearing (CLCO)  
Dismissal without Trial (DSM)  
Dismissal after Non-Jury Trial Commencement (DAT)  
Settled after Non-Jury Trial Commencement (SAT)  
Settled by Parties/Agreed Judgment (STPR)

### **Adoption - Closure by Clerk**

Dismissal/Closure by Clerk (DSCK)

### **Adoption - Others**

Change of Venue/Jurisdiction (CHV)  
Other Non-specified Resolutions

### **Civil - Resolved by Jury Trial**

Jury Verdict after Trial (JVAT)

### **Civil - Resolved by Non-Jury Trial**

Court Decision after Non-Jury Trial (CDAT)

### **Civil - Summary Judgment**

Summary Judgment (SMJG)

### **Civil - Default/Uncontested**

Consolidated Case (CONS)  
Default Judgment (DFJG)  
Uncontested Resolution (UNDS)

### **Civil - Arbitration**

Settle by Arbitration (ARBA)

### **Civil - Settlement/Dismissal**

Closed by Court Order after a Hearing (CLCO)  
Dismissal after Non-Jury Trial (DAT)  
Dismissal after Jury Trial (DJT)  
Dismissal (DSM)  
Settled after Non-Jury Trial Commencement (SAT)  
Settled after Jury Trial Commencement (SJT)  
Settled by Parties/Agreed Judgment (STPR)

### **Civil - Closure by Clerk**

Dismissal/Closure by Clerk (DSCK)

### **Civil - Others**

Transferred to Federal bankruptcy Court (BANK)  
Change of Venue/Jurisdiction (CHV)  
Other Non-specified Resolutions

### **Civil RALJ - RALJ Decision**

Court Decision to Affirm Appeal/review (CDTA)  
Court Decision to Modify Appeal/Review (CDTM)  
Court Decision to Reverse Appeal/review (CDTR)

### **Civil RALJ - Dismissal**

Dismissal and Remand of Appeal/Review (DSRM)

### **Civil RALJ - Others**

Other Non-specified Resolutions

### **Comparison with Court Standard**

Percentage of cases actually falling within the Court’s standard benchmark.

### **Court Standard**

Benchmarks set by a state advisory committee and adopted by the court indicating percentage of cases to be resolved at certain age (in months, 1 month = 30 days as used in the Advisory Case Processing Time Standard as published in the Court Rule).

Court standard is based on timelines as suggested by State Advisory Committee. For a case type with no time standard, the standard for a similar case type is adopted if appropriate.

*Criminal: 90% by 4 months, 98% by 6 months, 100% by 9 months.*

*Civil: 90% by 12 months, 98% by 18 months, 100% by 24 months.*

*Domestic: 90% by 8 months, 98% by 10 months, 100% by 14 months.*

*Probate/Guardianship: 90% by 8 months, 98% by 18 months, 100% by 36 months.*

*Adoption/Paternity: 90% by 8 months, 98% by 10 months, 100% by 14 months.*

*Mental Illness/Juvenile Truancy: No standard yet.*

*Juvenile Dependency: 90% by 8 months, 98% by 10 months, 100% by 14 months.*

*Juvenile Offender: 90% by 4 months, 98% by 6 months, 100% by 9 months.*

*Criminal RALJ/Civil RALJ: 90% by 4 months, 98% by 5 months, 100% by 6 months.*

### **Criminal - Resolved by Jury Trial**

Acquittal by Jury (AQJV)  
Convicted - Jury Verdict after Trial (CVJV)

### **Criminal - Resolved by Non-Jury Trial**

Acquittal by Court (AQCT)  
Convicted - Court Decision after Non-Jury Trial (CVCT)

### **Criminal - Resolved by Guilty Plea**

Guilty Plea (GP)  
Guilty Plea after Non-Jury Trial Commencement (GPAT)  
Guilty Plea after Jury Trial Commencement (GPJT)

### **Criminal - Dismissal**

Dismissal after Non-Jury Trial Commencement (DAT)  
Dismissal after Jury Trial Commencement (DJT)  
Dismissal (DSM)

### **Criminal - Others**

Change of Venue (CHV)  
Consolidated Case (CONS)  
Continued Order of Prosecution with Completion (CTOP)\*  
Deferred Prosecution (DFPD)  
Dismissal/Closure by Clerk (DSCK)  
Governor’s warrant (GW)  
Not Guilty by Reason of Insanity (NGRI)  
Uncontested Resolution (UNDS)  
Waiver of Extradition (WE)  
Other Non-specified Resolutions

\* Note: For adult criminal cases, “CTOP” does not necessarily constitute resolution. An adult criminal case with a “CTOP” as resolution code is counted as a resolved case only if a completion code exists along with the “CTOP”. If the resolution code is CTOP and there is no completion code, then the case is treated as unresolved. The primary reason for combining “CTOP” with a completion code is to determine resolution for drug court cases (CTOP is entered in the

SCOMIS resolution field as soon as a defendant enrolls in Drug Court). This rule on “CTOP” applies to adult criminal cases only.

***Criminal RALJ - RALJ Decision***

Court Decision to Affirm Appeal/review (CDTA)  
Court Decision to Modify Appeal/Review (CDTM)  
Court Decision to Reverse Appeal/review (CDTR)

***Criminal RALJ - Dismissal***

Dismissal and Remand of Appeal/Review (DSRM)

***Criminal RALJ - Others***

Other Non-specified Resolutions

***Domestic - Resolved by Trial***

Court Decision after Non-Jury Trial (CDAT)

***Domestic - Default/Uncontested***

Consolidated Case (CONS)  
Default Judgment (DFJG)  
Uncontested Resolution (UNDS)

***Domestic - Settlement/Dismissal***

Settled by Arbitration (ARBA)  
Closed by Court Order after a Hearing (CLCO)  
Dismissal after Non-Jury Trial Commencement (DAT)  
Dismissal (DSM)  
Settled after Non-Jury Trial Commencement (SAT)  
Settled by Parties/Agreed Judgment (STPR)

***Domestic - Closure by Clerk***

Dismissal/Closure by Clerk (DSCK)

***Domestic - Others***

Change of Venue/Jurisdiction (CHV)  
Summary Judgment (SMJG)  
Other Non-specified Resolutions

***Guardianship - Guardian Appointed***

Guardian Appointed (PRGA)

***Guardianship - Dismissal***

Closed by Court Order after a Hearing (CLCO)  
Dismissal (DSM)

***Guardianship - Closure by Clerk***

Dismissal/Closure by Clerk (DSCK)

***Guardianship - Others***

Change of Venue/Jurisdiction (CHV)  
Consolidated Case (CONS)  
Uncontested Resolution (UNDS)  
Other Non-specified Resolutions

***Juvenile Dependency - Finding of Dependency***

Approved Petition (APP)

***Juvenile Dependency - Dismissal***

Dismissal (DSM)

***Juvenile Dependency - Others***

Change of Venue/Jurisdiction (CHV)  
Consolidated Case (CONS)  
Transfer of Jurisdiction (TRJU)  
Other Non-specified Resolutions

***Juvenile Offender - Resolved by Trial***

Acquittal by Court (AQCT)  
Convicted - Court Decision after Adjudictory Hearing (CVCT)

***Juvenile Offender - Resolved by Guilty Plea***

Guilty Plea before Adjudictory Hearing Commencement (GP)  
Guilty Plea after Adjudictory Hearing Commencement (GPAT)

***Juvenile Offender - Dismissal***

Dismissal after Adjudictory Hearing Commencement (DAT)  
Dismissal (DSM)

***Juvenile Offender - Others***

Change of venue (CHV)  
Dismissal/Closure by Clerk (DSCK)  
Consolidated Case (CONS)

Continued Prosecution (CTOP)  
Decline of Jurisdiction (DECL)  
Uncontested Resolution (UNDS)  
Other Non-specified Resolutions

***Juvenile Truancy - Finding of Truancy***

Approved Petition (APP)

***Juvenile Truancy - Dismissal***

Dismissal (DSM)

***Juvenile Truancy - Others***

Change of Venue (CHV)  
Consolidated Case (CONS)  
Transfer of Jurisdiction (TRJU)  
Other Non-specified Resolutions

***Mental Illness - Court Decision to Commit***

Court Decision to Commit (CDTC)

***Mental Illness - Closed by Court***

Closed by Court (CLCO)

***Mental Illness - Dismissal***

Dismissal (DSM)

***Mental Illness - Others***

Change of Venue/Jurisdiction (CHV)  
Uncontested Resolution (UNDS)  
Other Non-specified Resolutions

***Paternity - Resolved by Trial***

Court Decision after Non-Jury Trial (CDAT)

***Paternity - Summary Judgment***

Summary Judgment (SMJG)

***Paternity - Default/Uncontested***

Consolidated Case (CONS)  
Default Judgment (DFJG)  
Uncontested Resolution (UNDS)

***Paternity - Settlement/Dismissal***

Settled by Arbitration (ARBA)  
Closed by Court Order after a Hearing (CLCO)  
Dismissal after Non-Jury Trial Commencement (DAT)  
Dismissal (DSM)  
Settled after Non-Jury Trial Commencement (SAT)  
Settled by Partied/Agreed Judgment (STPR)

***Paternity - Closure by Clerk***

Dismissal/Closure by Clerk (DSCK)

***Paternity - Others***

Change of Venue (CHV)  
Other Non-specified Resolutions

***Percentile***

Percent of cases resolved at a given age. For example, if resolved cases had a 98 percentile of 12 months, it means that 98% of the cases were resolved within the age of 12 months, or conversely 2% of the cases were resolved after 12 months, not counting suspense time.



### **Probate - Personal Representative Appointed**

Non-Intervention Probate (NIP)  
Personal Representative Appointed (PRGA)

### **Probate - Dismissal**

Closed by Court Order after a Hearing (CLCO)  
Dismissal (DSM)

### **Probate - Closure by Clerk**

Dismissal/Closure by Clerk (DSCK)

### **Probate - Others**

Change of Venue (CHV)  
Consolidated Case (CONS)  
Uncontested Resolution (UNDS)  
Other Non-specified Resolutions

### **Backlogged Cases**

Active pending cases with an age exceeding the court-adopted time standard for each specific case type (recommended by the State Advisory Committee, see definition for *Court Standard*).

## **Section III. Pending Caseload**

### **Adjustment**

Adjustment made because of vacating of resolutions, or change in suspense status between two reporting period.

### **End Pending**

Total number of pending cases at the end of reporting period.

### **Previous Pending**

Total number of pending cases at the beginning of reporting period.

### **Resolution Rate**

Resolution rate is defined as the ratio of number of resolutions to number of new filings (i.e., number of resolutions divided by number of new filings) during the reporting period. The resolution rate measures the relative pace of resolution in relation to the pace of new filings. A resolution rate of greater than 1 indicates the number of resolutions exceeds the number of new filings.

### **On-review Status**

Cases that have been resolved (post-resolution) but still need court resources for periodic review and other remaining outstanding issues.

*Probate (EST), Paternity (PAT) and Dependency (DEP): Resolved and not completed (paternity or dependency established, but outstanding issues remain).*

*Guardianship (GDN,LGD,G/E): Resolved and on tracks of G1,G2,G3,GE or GD; Minor Settlement (MST): Resolved with a future hearing date.*

## **Section IV. Age of Pending Cases**

### **Case Age**

The age of a case is the time (number of days) since the filing date, less any suspense time if applicable.

### **Median Age**

The median age is the time that 50% of the cases are under and 50% are above the given age. For example, if pending cases have a median age of 12 months, it means that 50% of the pending cases are within the age of 12 months, and 50% of pending cases are over 12 months. The median age is more robust to cases with extreme age values than the average age.

### **Suspense Time**

Time (days) that a case is on suspense status before its resolution. If a case has more than one suspense between filing and resolution, the suspense time is the total from all suspenses. Time on suspense status after resolution (e.g., appeals) is not counted.