

King County Superior Court
Quarterly Statistical Report

Fourth Quarter 2014

Department of Judicial Administration
Prepared by: Shiquan Liao, Ph.D., Statistician

Release Date: January 20, 2015

Report #: QTR-2014-4

Table 1. Year-to-Date Filing Activity

King County Superior Court

Reporting Category	Year-to-Date and Annual Filing Activity ⁽¹⁾					2013-2014 change (+ means "increase")		% of 2014 Total Filing ⁽²⁾
	2010	2011	2012	2013	2014	Cases	Percentage	
Total (incl. RALJ)								
Year-to-Date Filing	59798	58337	54834	52755	52224	-531	-1.0%	
Annual Filing	59798	58337	54834	52755				
Criminal (excl. RALJ)								
Year-to-Date Filing	6691	5986	5942	6045	6213	+168	+2.8%	11.9%
Annual Filing	6691	5986	5942	6045				
General Civil (excl. Asbestos)								
Year-to-Date Filing	27603	27499	24477	22347	21378	-969	-4.3%	40.9%
Annual Filing	27603	27499	24477	22347				
Asbestos Cases (civil)⁽³⁾								
Year-to-Date Filing	29	43	36	63	40	-23	-36.5%	0.1%
Annual Filing	29	43	36	63				
Domestic								
Year-to-Date Filing	7850	7865	7678	7897	7921	+24	+0.3%	15.2%
Annual Filing	7850	7865	7678	7897				
Probate								
Year-to-Date Filing	5203	5417	5492	5844	5920	+76	+1.3%	11.3%
Annual Filing	5203	5417	5492	5844				
Guardianship								
Year-to-Date Filing	893	837	879	884	928	+44	+5.0%	1.8%
Annual Filing	893	837	879	884				
Adoption								
Year-to-Date Filing	686	688	511	483	470	-13	-2.7%	0.9%
Annual Filing	686	688	511	483				
Paternity								
Year-to-Date Filing	1189	1039	1161	931	702	-229	-24.6%	1.3%
Annual Filing	1189	1039	1161	931				
Mental Illness								
Year-to-Date Filing	3059	3506	3591	3678	3852	+174	+4.7%	7.4%
Annual Filing	3059	3506	3591	3678				
Juvenile DEP/TER								
Year-to-Date Filing	1038	1060	1050	1137	1261	+124	+10.9%	2.4%
Annual Filing	1038	1060	1050	1137				
Juvenile ARY/CHINS/OTHER								
Year-to-Date Filing	347	303	242	168	285	+117	+69.6%	0.5%
Annual Filing	347	303	242	168				
Juvenile Truancy								
Year-to-Date Filing	1614	1350	1271	1236	1233	-3	-0.2%	2.4%
Annual Filing	1614	1350	1271	1236				
Juvenile Offender								
Year-to-Date Filing	3356	2496	2249	1808	1802	-6	-0.3%	3.5%
Annual Filing	3356	2496	2249	1808				
Criminal RALJ								
Year-to-Date Filing	176	191	192	181	172	-9	-5.0%	0.3%
Annual Filing	176	191	192	181				
Civil RALJ								
Year-to-Date Filing	64	57	63	53	47	-6	-11.3%	0.1%
Annual Filing	64	57	63	53				
Matters Filed with Clerk⁽⁴⁾								
Year-to-Date Filing	15586	14799	15046	13763	12240	-1523	-11.1%	
Annual Filing	15586	14799	15046	13763				

(1) New filings only (based on filing date), excluding re-opened cases (unable to count), and reflecting all documents received by 01/15/2015.

(2) New filings of each reporting category as percentage of "Year-to-Date Filing".

(3) "Matters Filed with Clerk" and "Additional Filings with Clerk" are not included in the "Total".

Chart 1-A. Quarterly Filing Activity
Total Judicial Cases Only ("Matters Filed with Clerk" excluded)

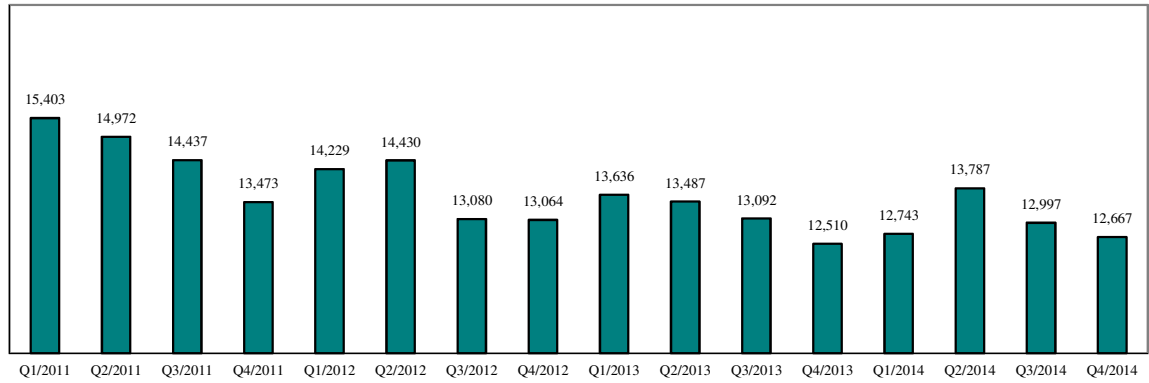
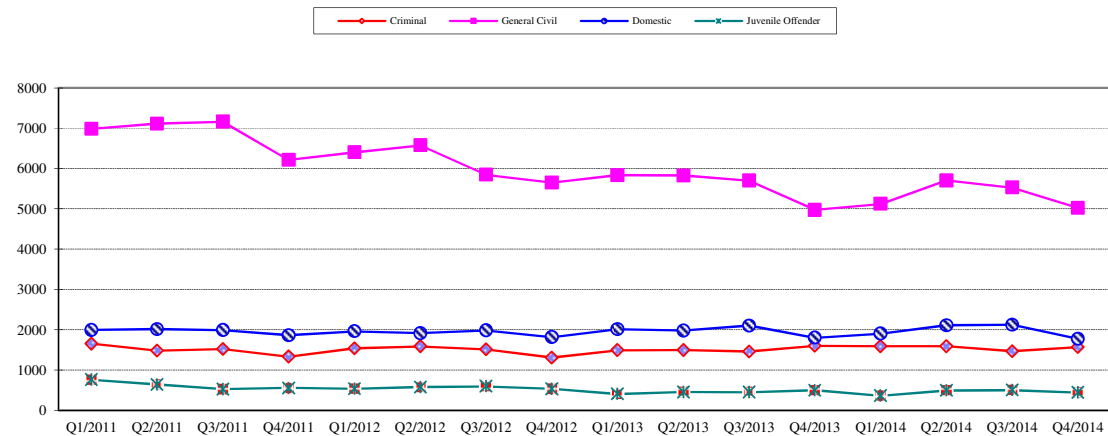


Chart 1-B. Quarterly Filings: Criminal, Domestic, General Civil and Juvenile Offender Cases Only



* Note: "General Civil" is specifically defined in this report. The category of "General Civil" does **not** include the following case types: domestic, probate, guardianship, adoption, paternity, mental illness, juvenile cases (dependency, at-risk youth, child-in-need of service, civil RALJ, and tax filings that don't require judicial resources ("matters filed with clerk"). Please check the Appendix for the cause codes in the "General Civil" category.

Table 1-A. Post-Resolution Modifications (Domestic and Paternity Cases)

Based on Tracks Opened After Original Resolution Date

		2012Q1			2012Q2			2012Q3			2012Q4			Year 2012		
Location	Case Type	DMOD	DTBA	Total	DMOD	DTBA	Total	DMOD	DTBA	Total	DMOD	DTBA	Total	DMOD	DTBA	Total
KNT	Domestic	183	55	238	153	56	209	150	61	211	159	38	197	645	210	855
	Paternity	15	4	19	14	8	22	16	4	20	13	6	19	58	22	80
KNT Total		198	59	257	167	64	231	166	65	231	172	44	216	703	232	935
SEA	Domestic	153	68	221	156	84	240	192	71	263	149	68	217	650	291	941
	Paternity	6	18	24	13	22	35	16	10	26	4	7	11	39	57	96
SEA Total		159	86	245	169	106	275	208	81	289	153	75	228	689	348	1037
KNT/SEA Total		357	145	502	336	170	506	374	146	520	325	119	444	1392	580	1972
		2013Q1			2013Q2			2013Q3			2013Q4			Year 2013		
Location	Case Type	DMOD	DTBA	Total	DMOD	DTBA	Total	DMOD	DTBA	Total	DMOD	DTBA	Total	DMOD	DTBA	Total
KNT	Domestic	160	47	207	149	59	208	179	45	224	152	53	205	640	204	844
	Paternity	17	7	24	13	11	24	14	3	17	11	7	18	55	28	83
KNT Total		177	54	231	162	70	232	193	48	241	163	60	223	695	232	927
SEA	Domestic	132	67	199	169	102	271	185	74	259	152	70	222	638	313	951
	Paternity	6	9	15	16	11	27	18	6	24	13	5	18	53	31	84
SEA Total		138	76	214	185	113	298	203	80	283	165	75	240	691	344	1035
KNT/SEA Total		315	130	445	347	183	530	396	128	524	328	135	463	1386	576	1962
		2014Q1			2014Q2			2014Q3			2014Q4			Year 2014		
Location	Case Type	DMOD	DTBA	Total	DMOD	DTBA	Total	DMOD	DTBA	Total	DMOD	DTBA	Total	DMOD	DTBA	Total
KNT	Domestic	144	43	187	172	66	238	183	46	229	164	42	206	663	197	860
	Paternity	15	4	19	11	7	18	13	4	17	16	6	22	55	21	76
KNT Total		159	47	206	183	73	256	196	50	246	180	48	228	718	218	936
SEA	Domestic	155	59	214	155	104	259	170	76	246	154	57	211	634	296	930
	Paternity	14	6	20	8	10	18	15	11	26	9	4	13	46	31	77
SEA Total		169	65	234	163	114	277	185	87	272	163	61	224	680	327	1007
KNT/SEA Total		328	112	440	346	187	533	381	137	518	343	109	452	1398	545	1943

* DMOD = parenting plan modification track; DTBA = support modification track.

Table 2. Number of Cases Resolved and Resolution Category (%)

King County Superior Court

Reporting Category	Q1/13	Q2/13	Q3/13	Q4/13	Q1/14	Q2/14	Q3/14	Q4/14*
Total Resolutions (excl. "Matters Filed with Clerk")	14048	14104	13836	13052	13126	13573	13855	13195
Criminal (excl. RALJ): # Resolved	1539	1388	1524	1364	1475	1440	1540	1535
Resolved by Jury Trial	3.8%	4.3%	3.3%	3.7%	3.9%	3.8%	3.2%	3.4%
Resolved by Non-Jury Trial	1.5%	1.2%	1.8%	1.2%	1.0%	1.3%	1.0%	2.0%
Resolved by Guilty Plea	78.8%	79.7%	79.9%	78.5%	78.9%	77.2%	80.6%	80.4%
Dismissal	15.4%	14.7%	14.8%	16.3%	16.0%	17.4%	15.0%	13.8%
Others	0.5%	0.1%	0.3%	0.3%	0.3%	0.2%	0.3%	0.5%
General Civil: # Resolved	6503	6402	6054	5478	5751	6055	6111	5650
Resolved by Jury Trial	0.5%	0.6%	0.6%	0.5%	0.4%	0.4%	0.4%	0.6%
Resolved by Non-Jury Trial	0.5%	0.4%	0.3%	0.4%	0.6%	0.3%	0.3%	0.4%
Summary Judgment	1.7%	1.8%	1.7%	1.9%	1.8%	2.5%	2.2%	2.2%
Default/ Uncontested	41.3%	41.9%	39.9%	36.6%	35.8%	37.9%	41.3%	37.4%
Arbitration	2.6%	2.4%	2.7%	2.6%	2.4%	2.8%	2.3%	2.7%
Settlement/Dismissal	49.8%	49.3%	51.3%	54.5%	51.5%	50.6%	49.7%	53.0%
Closure by Clerk	2.9%	2.5%	2.3%	2.5%	3.0%	2.9%	2.3%	2.3%
Others	0.9%	1.1%	1.2%	1.1%	4.5%	2.7%	1.5%	1.4%
Asbestos Cases (civil): # Resolved	15	20	9	4	26	13	14	14
Resolved by Jury Trial	6.7%	5.0%	0.0%	0.0%	0.0%	0.0%	7.1%	0.0%
Resolved by Non-Jury Trial	0.0%	0.0%	0.0%	0.0%	0.0%	0.0%	0.0%	0.0%
Summary Judgment	0.0%	5.0%	0.0%	0.0%	3.9%	7.7%	7.1%	14.3%
Default/ Uncontested	6.7%	5.0%	22.2%	0.0%	7.7%	0.0%	14.3%	14.3%
Arbitration	0.0%	0.0%	0.0%	0.0%	0.0%	0.0%	0.0%	0.0%
Settlement/Dismissal	53.3%	60.0%	77.8%	100%	80.8%	69.2%	64.3%	57.1%
Closure by Clerk	33.3%	20.0%	0.0%	0.0%	0.0%	23.1%	7.1%	14.3%
Others	0.0%	5.0%	0.0%	0.0%	0.0%	0.0%	0.0%	0.0%
Domestic: # Resolved	1928	1965	2055	2023	1933	2022	1963	1994
Resolved by Trial	4.5%	4.5%	3.8%	4.0%	4.2%	4.4%	4.3%	3.7%
Default/ Uncontested	9.1%	8.3%	11.1%	8.7%	8.6%	9.3%	9.0%	8.7%
Settlement /Dismissal	84.9%	86.3%	84.7%	86.4%	86.3%	85.5%	86.2%	87.2%
Closure by Clerk	1.2%	0.5%	0.3%	0.4%	0.5%	0.5%	0.3%	0.4%
Others	0.4%	0.4%	0.1%	0.6%	0.5%	0.4%	0.2%	0.1%
Probate: # Resolved	1547	1580	1319	1333	1441	1520	1454	1448
Personal Rep. Appointed	72.9%	66.3%	70.7%	74.6%	73.6%	71.5%	69.4%	71.7%
Dismissal	1.8%	5.0%	2.4%	1.5%	1.5%	3.4%	2.6%	3.3%
Closure by Clerk	0.0%	3.5%	0.0%	0.0%	0.0%	0.2%	0.1%	0.2%
Others	25.4%	25.2%	27.0%	23.9%	24.8%	24.9%	27.9%	24.9%
Guardianship: # Resolved	176	212	232	218	214	257	237	232
Guardian Appointed	50.0%	49.1%	54.7%	52.3%	53.3%	54.5%	52.3%	48.7%
Dismissal	50.0%	50.0%	44.8%	47.7%	46.3%	44.0%	45.6%	51.3%
Closure by Clerk	0.0%	0.0%	0.0%	0.0%	0.0%	0.4%	0.0%	0.0%
Others	0.0%	0.9%	0.4%	0.0%	0.5%	1.2%	2.1%	0.0%
Adoption: # Resolved	95	123	146	155	87	152	110	139
Resolved by Trial	0.0%	0.8%	0.7%	0.0%	0.0%	2.6%	0.9%	0.7%
Uncontested	9.5%	1.6%	3.4%	0.7%	10.3%	5.3%	7.3%	3.6%
Settlement /Dismissal	90.5%	95.9%	95.2%	98.7%	88.5%	92.1%	90.9%	95.0%
Closure by Clerk	0.0%	1.6%	0.0%	0.0%	1.2%	0.0%	0.0%	0.0%
Others	0.0%	0.0%	0.7%	0.7%	0.0%	0.0%	1.8%	0.7%
Paternity: # Resolved	265	247	242	234	264	231	193	171
Resolved by Trial	0.4%	0.8%	0.8%	1.7%	0.4%	0.9%	0.5%	1.2%
Summary Judgment	48.3%	51.4%	42.2%	49.2%	48.9%	25.1%	50.8%	53.8%
Default/ Uncontested	22.6%	23.5%	33.1%	23.9%	25.8%	32.0%	19.2%	18.1%
Settlement/Dismissal	28.7%	23.9%	24.0%	25.2%	24.6%	28.1%	29.5%	26.9%
Closure by Clerk	0.0%	0.4%	0.0%	0.0%	0.4%	0.0%	0.0%	0.0%
Others	0.0%	0.0%	0.0%	0.0%	0.0%	0.0%	0.0%	0.0%

Reflecting all documents received by 01/15/2015.

Table 2 (cont.). Number of Cases Resolved and Resolution Category (%)

King County Superior Court

Reporting Category	Q1/13	Q2/13	Q3/13	Q4/13	Q1/14	Q2/14	Q3/14	Q4/14*
Mental Illness: # Resolved	754	893	1113	1125	859	996	1016	963
Court Decision to Commit	70.9%	70.1%	55.0%	55.2%	66.5%	63.9%	66.5%	63.9%
Closed by Court	0.0%	0.0%	0.0%	0.0%	0.2%	0.0%	0.0%	0.0%
Dismissal	22.2%	21.3%	21.5%	20.5%	21.0%	20.6%	18.7%	22.5%
Others	7.0%	8.6%	23.5%	24.3%	12.3%	15.6%	14.8%	13.6%
Juv. DEP/TER: # Resolved	294	411	251	231	298	145	369	251
Finding of Dependency	69.7%	76.6%	74.5%	65.4%	72.2%	72.7%	76.4%	68.5%
Dismissal	29.9%	21.2%	23.5%	32.9%	27.2%	27.3%	23.6%	31.5%
Others	0.3%	2.2%	2.0%	1.7%	0.7%	0.0%	0.0%	0.0%
Juv. ARY/CHINS/OTHER:# Resolved	62	69	45	50	68	61	66	66
Approve of Petition	45.2%	60.9%	60.0%	56.0%	64.7%	57.4%	65.1%	63.6%
Dismissal	54.8%	37.7%	37.8%	42.0%	35.3%	42.6%	34.9%	36.4%
Others	0.0%	1.5%	2.2%	2.0%	0.0%	0.0%	0.0%	0.0%
Juvenile Truancy: # Resolved	302	226	296	336	189	109	298	203
Approve of Petition	36.4%	40.3%	0.3%	13.4%	48.7%	72.5%	0.7%	9.9%
Dismissal	63.6%	59.7%	99.7%	86.6%	51.3%	24.8%	99.3%	90.2%
Others	0.0%	0.0%	0.0%	0.0%	0.0%	2.8%	0.0%	0.0%
Juvenile Offender: # Resolved	511	501	491	441	465	413	429	480
Resolved by Trial (Fact Finding)	12.0%	11.2%	6.1%	7.5%	3.9%	7.8%	7.2%	5.4%
Resolved by Guilty Plea	40.9%	36.7%	35.2%	39.5%	41.3%	34.1%	30.8%	33.3%
Dismissal	27.2%	28.5%	41.6%	32.4%	35.5%	43.6%	37.8%	46.5%
Deferred Disposition (DDSP)	16.6%	16.6%	14.3%	16.1%	16.8%	11.1%	19.8%	11.7%
Others (including Deferred Prosecution)	3.3%	7.0%	0.0%	4.5%	2.6%	3.4%	4.4%	3.1%
Criminal RALJ: # Resolved	38	45	46	54	41	48	41	32
RALJ Decision	60.5%	66.7%	58.7%	63.0%	73.2%	72.9%	56.1%	78.1%
Dismissal	34.2%	31.1%	39.1%	33.3%	24.4%	25.0%	36.6%	21.9%
Others	5.3%	2.2%	2.2%	3.7%	2.4%	2.1%	7.3%	0.0%
Civil RALJ: # Resolved	19	22	13	6	15	11	14	17
RALJ Decision	15.8%	50.0%	61.5%	50.0%	40.0%	63.6%	71.4%	41.2%
Dismissal	84.2%	50.0%	38.5%	50.0%	46.7%	27.3%	21.4%	58.8%
Others	0.0%	0.0%	0.0%	0.0%	13.3%	9.1%	7.2%	0.0%

* Reflecting all documents received by 01/15/2015.

Chart 2-A. Quarterly Resolutions
Total Judicial Cases Only ("Matters Filed with Clerk" excluded)

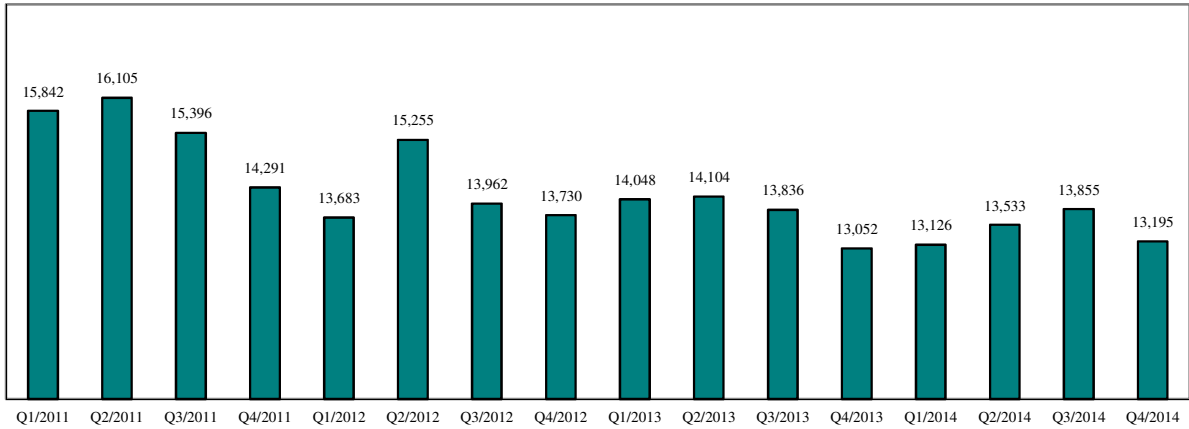
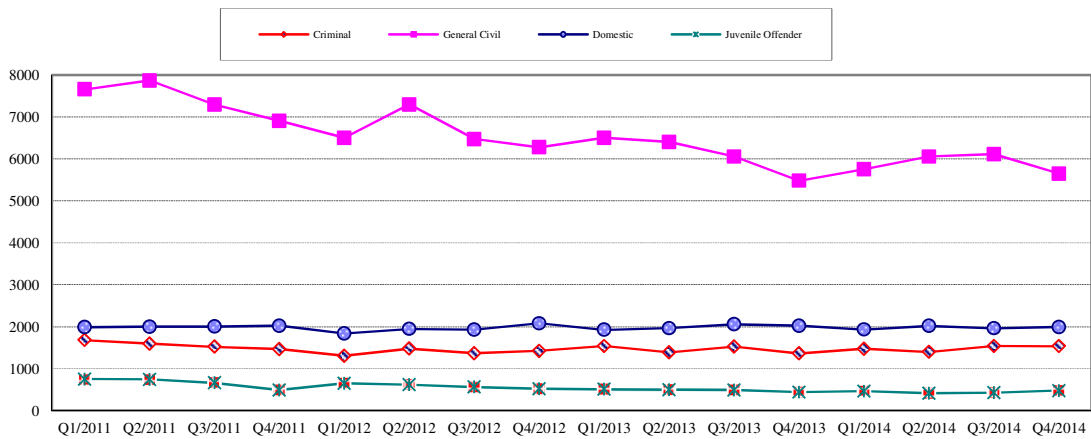


Chart 2-B. Quarterly Resolutions: Criminal, Dmestic, General Civil and Juvenile Offender Cases Only



* Note: "General Civil" is specifically defined in this report. The category of "General Civil" does **not** include the following case types: domestic, probate, guardianship, adoption, paternity, mental illness, juvenile cases (dependency, at-risk youth, child-in-need of service), civil RALJ, and tax filings that don't require judicial resources ("matters filed with clerk"). Please check the Appendix for the cause codes in the "General Civil" category.

Table 3. Age of Resolved Cases
King County Superior Court

Reporting Category	Age of Cases at Resolution							
	Q1/13	Q2/13	Q3/13	Q4/13	Q1/14	Q2/14	Q3/14	Q4/14*
Criminal (excl. RALJ)								
Age (days)								
50% Cases Resolved by Day	120	110	116	117	118	117	117	118
90% Cases Resolved by Day	346	398	371	359	378	360	345	342
Comparison with Court Standard of								
90% in 4 months	50%	54%	52%	51%	51%	51%	51%	51%
98% in 6 months	69%	69%	69%	69%	69%	67%	71%	70%
100% in 9 months	84%	82%	84%	84%	83%	83%	84%	86%
General Civil ⁽¹⁾								
Age (days)								
50% Cases Resolved by Day	28	27	29	38	42	36	31	35
90% Cases Resolved by Day	512	515	496	484	520	468	435	437
Comparison with Court Standard of								
90% in 12 months	80%	83%	83%	83%	81%	84%	85%	84%
98% in 18 months	92%	92%	93%	93%	91%	94%	95%	94%
100% in 24 months	98%	97%	97%	97%	96%	98%	98%	99%
Domestic								
Age (days)								
50% Cases Resolved by Day	181	164	150	155	175	181	148	164
90% Cases Resolved by Day	387	380	371	379	373	376	363	364
Comparison with Court Standard of								
90% in 8 months	63%	66%	67%	66%	62%	64%	68%	67%
98% in 10 months	71%	75%	84%	75%	73%	75%	76%	78%
100% in 14 months	92%	92%	94%	94%	94%	93%	94%	94%
Probate								
Age (days)								
50% Cases Resolved by Day	0	0	0	0	0	0	0	0
90% Cases Resolved by Day	4	311	7	6	5	21	15	17
Comparison with Court Standard of								
90% in 8 months	98%	89%	98%	99%	99%	98%	97%	99%
98% in 18 months	100%	91%	100%	100%	100%	99%	100%	100%
100% in 36 months	100%	94%	100%	100%	100%	100%	100%	100%
Guardianship								
Age (days)								
50% Cases Resolved by Day	61	59	63	63	66	59	67	68
90% Cases Resolved by Day	259	342	247	172	223	221	322	274
Comparison with Court Standard of								
90% in 8 months	90%	87%	90%	91%	93%	91%	89%	88%
98% in 18 months	94%	97%	97%	100%	100%	97%	97%	98%
100% in 36 months	99%	99%	98%	100%	100%	99%	100%	99%
Adoption								
Age (days)								
50% Cases Resolved by Day	93	108	65	49	45	88	40	56
90% Cases Resolved by Day	700	863	591	215	185	593	943	230
Comparison with Court Standard of								
90% in 8 months	69%	74%	74%	92%	92%	74%	86%	90%
98% in 10 months	75%	76%	75%	95%	92%	77%	89%	90%
100% in 14 months	81%	77%	78%	95%	95%	81%	89%	96%
Paternity								
Age (days)								
50% Cases Resolved by Day	173	180	165	181	190	154	155	145
90% Cases Resolved by Day	273	296	271	300	273	288	292	286
Comparison with Court Standard of								
90% in 8 months	80%	79%	63%	74%	76%	84%	83%	82%
98% in 10 months	93%	91%	76%	91%	95%	93%	94%	93%
100% in 14 months	100%	98%	98%	97%	98%	96%	97%	98%

Table 3 (cont.) Age of Resolved Cases
King County Superior Court

Reporting Category	Age of Cases at Resolution							
	Q1/13	Q2/13	Q3/13	Q4/13	Q1/14	Q2/14	Q3/14	Q4/14*
Mental Illness**								
Age (days)								
50% Cases Resolved by Day	2	3	4	4	3	3	2	3
90% Cases Resolved by Day	9	9	333	287	10	13	10	10
Juvenile DEP/TER								
Age (days)								
50% Cases Resolved by Day	93	188	84	101	141	112	117	121
90% Cases Resolved by Day	487	821	218	296	446	259	387	285
Comparison with Court Standard of								
90% in 8 months	77%	56%	93%	89%	80%	89%	76%	88%
98% in 10 months	83%	59%	94%	92%	83%	94%	82%	92%
100% in 14 months	88%	72%	95%	94%	87%	99%	92%	98%
Juv ARY/CHINS/OTHER								
Age (days)								
50% Cases Resolved by Day	55	41	39	44	48	24	35	34
90% Cases Resolved by Day	238	692	235	112	1058	109	235	184
Comparison with Court Standard of								
90% in 8 months	90%	82%	91%	94%	83%	95%	93%	95%
98% in 10 months	93%	85%	91%	94%	86%	99%	100%	99%
100% in 14 months	98%	87%	96%	98%	86%	100%	100%	100%
Juvenile Truancy**								
Age (days)								
50% Cases Resolved by Day	32	22	25	67	39	30	36	108
90% Cases Resolved by Day	85	60	100	177	150	94	148	214
Juvenile Offender								
Age (days)								
50% Cases Resolved by Day	83	73	78	77	71	78	66	84
90% Cases Resolved by Day	221	243	223	217	195	250	236	241
Comparison with Court Standard of								
90% in 4 months	69%	70%	69%	71%	76%	67%	72%	63%
98% in 6 months	85%	81%	84%	83%	88%	78%	84%	80%
100% in 9 months	94%	91%	93%	94%	95%	91%	91%	93%
Criminal RALJ								
Age (days)								
50% Cases Resolved by Day	258	283	275	286	264	282	228	258
90% Cases Resolved by Day	413	433	447	467	371	482	353	407
Civil RALJ								
Age (days)								
50% Cases Resolved by Day	171	266	165	176	157	175	186	164
90% Cases Resolved by Day	704	373	400	199	246	329	299	352

* Reflecting all documents received by 01/15/2015.

** No standard yet.

Table 4. Active Pending Caseload Statistics
King County Superior Court

Reporting Category	Q1/13	Q2/13	Q3/13	Q4/13	Q1/14	Q2/14	Q3/14	Q4/14*
Total (incl. RALJ)								
Previous Pending (+)	19396	19221	19064	18930	18749	18514	19112	18951
New Filing (+)	13636	13487	13092	12510	12743	13787	12997	12667
Resolved (-)	14048	14104	13836	13052	13126	13573	13855	13195
End Pending	19221	19064	18930	18794	18514	19112	18951	18811
Resolution Rate**	1.030	1.048	1.057	1.043	1.023	0.982	1.066	1.042
Criminal (excl. RALJ)								
Previous Pending (+)	2780	2673	2828	2752	2865	2883	2966	2923
New Filing (+)	1490	1495	1460	1599	1587	1590	1465	1567
Resolved (-)	1539	1388	1524	1364	1475	1440	1540	1535
End Pending	2673	2828	2752	2865	2883	2966	2923	2866
Resolution Rate**	1.033	0.928	1.044	0.853	0.929	0.881	1.051	0.980
General Civil								
Previous Pending (+)	8431	8112	7914	8003	8003	7518	7542	7336
New Filing (+)	5834	5827	5701	4974	5122	5704	5527	5020
Resolved (-)	6503	6402	6054	5478	5751	6055	6111	5650
End Pending	8112	7914	8005	7844	7518	7542	7336	7079
Resolution Rate**	1.115	1.099	1.062	1.101	1.123	1.062	1.106	1.125
Asbestos Cases (civil) ⁽¹⁾								
Previous Pending (+)	76	81	80	81	92	77	70	71
New Filing (+)	19	18	10	14	9	7	14	9
Resolved (-)	15	20	9	4	26	13	14	14
End Pending	81	80	81	92	77	70	71	69
Resolution Rate**	0.789	1.111	0.900	0.286	2.889	1.857	1.000	1.556
Domestic								
Previous Pending (+)	4458	4562	4580	4650	4486	4499	4609	4802
New Filing (+)	2011	1979	2103	1803	1903	2110	2124	1773
Resolved (-)	1928	1965	2055	2023	1933	2022	1963	1994
End Pending	4562	4580	4650	4486	4499	4609	4802	4579
Resolution Rate**	0.959	0.998	0.977	1.122	1.016	0.958	0.924	1.125
Probate								
Previous Pending (+)	615	696	588	650	768	850	861	902
New Filing (+)	1606	1444	1352	1429	1501	1509	1474	1426
Resolved (-)	1547	1580	1319	1333	1441	1520	1454	1448
End Pending	696	588	650	768	850	861	902	908
Resolution Rate**	0.963	1.094	0.976	0.933	0.960	1.007	0.986	1.015
Guardianship								
Previous Pending (+)	248	279	302	310	303	334	320	316
New Filing (+)	210	234	237	209	245	241	232	219
Resolved (-)	176	212	232	218	214	257	237	232
End Pending	279	302	310	303	334	320	316	301
Resolution Rate**	0.838	0.906	0.979	1.043	0.873	1.066	1.022	1.059
Adoption								
Previous Pending (+)	199	222	200	187	187	200	158	151
New Filing (+)	115	101	133	134	121	110	103	135
Resolved (-)	95	123	146	155	87	152	110	139
End Pending	222	200	187	166	200	158	151	149
Resolution Rate**	0.826	1.218	1.098	1.157	0.719	1.382	1.068	1.030
Paternity								
Previous Pending (+)	500	479	506	500	446	384	338	295
New Filing (+)	246	273	235	177	197	179	146	180
Resolved (-)	265	247	242	234	264	231	193	171
End Pending	479	506	500	446	384	338	295	300
Resolution Rate**	1.077	0.905	1.030	1.322	1.340	1.291	1.322	0.950

* Reflecting all documents received by 01/15/2015.

** A value of "Resolution Rate" less than one indicates the resolution pace is slower than the filing pace.

Table 4 (cont.) Active Pending Caseload Statistics
King County Superior Court

Reporting Category		Q1/13	Q2/13	Q3/13	Q4/13	Q1/14	Q2/14	Q3/14	Q4/14*
Mental Illness									
Previous Pending	(+)	311	378	390	294	104	119	137	120
New Filing	(+)	820	904	1019	935	876	1014	996	965
Resolved	(-)	754	893	1113	1125	859	996	1016	963
End Pending		378	390	294	104	119	137	120	121
Resolution Rate**		0.920	0.988	1.092	1.203	0.981	0.982	1.020	0.998
Juvenile DEP/TER									
Previous Pending	(+)	516	492	419	447	507	537	657	557
New Filing	(+)	246	302	273	282	302	364	267	332
Resolved	(-)	294	411	251	231	298	245	369	251
End Pending		492	419	447	507	537	657	557	639
Resolution Rate**		1.195	1.361	0.920	0.819	0.987	0.673	1.382	0.756
Juv ARY/CHINS/OTHER									
Previous Pending	(+)	104	101	75	86	94	105	111	114
New Filing	(+)	55	37	51	58	76	68	67	69
Resolved	(-)	62	69	45	50	68	61	66	66
End Pending		101	75	86	94	105	111	114	119
Resolution Rate**		1.127	1.865	0.880	0.862	0.895	0.897	0.985	0.957
Juvenile Truancy									
Previous Pending	(+)	308	382	467	210	326	315	508	477
New Filing	(+)	533	361	10	331	390	348	27	468
Resolved	(-)	302	226	296	336	189	109	298	203
End Pending		382	467	210	326	315	508	477	821
Resolution Rate**		0.567	0.626	29.600	1.015	0.485	0.313	11.037	0.434
Juvenile Offender									
Previous Pending	(+)	663	588	546	587	612	518	668	716
New Filing	(+)	405	452	449	497	363	494	500	441
Resolved	(-)	511	501	491	441	465	413	429	480
End Pending		588	546	587	612	518	668	716	677
Resolution Rate**		1.262	1.108	1.094	0.887	1.281	0.836	0.858	1.088
Criminal RALJ									
Previous Pending	(+)	142	144	147	147	143	146	133	138
New Filing	(+)	40	48	44	48	43	33	46	48
Resolved	(-)	38	45	46	54	41	48	41	32
End Pending		144	147	147	143	146	133	138	155
Resolution Rate**		0.950	0.938	1.045	1.125	0.953	1.455	0.891	0.667
Civil RALJ									
Previous Pending	(+)	45	32	22	24	38	29	34	30
New Filing	(+)	6	12	15	20	8	16	9	14
Resolved	(-)	19	22	13	6	15	11	14	17
End Pending		32	22	24	38	29	34	30	28
Resolution Rate**		3.167	1.833	0.867	0.300	1.875	0.688	1.556	1.214

* Reflecting all documents received by 01/15/2015.

** A value of "Resolution Rate" less than one indicates the resolution pace is slower than the filing pace.

Chart 4-A. Active Pending Caseload at Quarter End
Total Judicial Cases Only ("Matters Filed with Clerk" excluded)

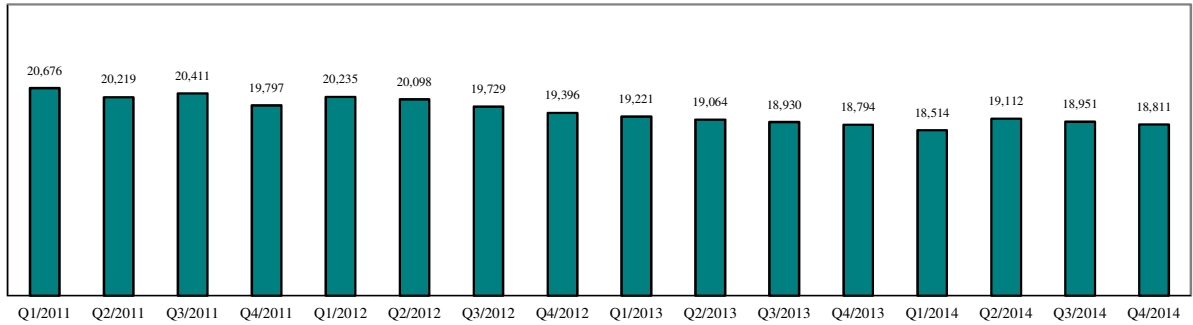


Chart 4-B. Active Pending Caseload at Quarter End: Domestic and General Civil Cases Only

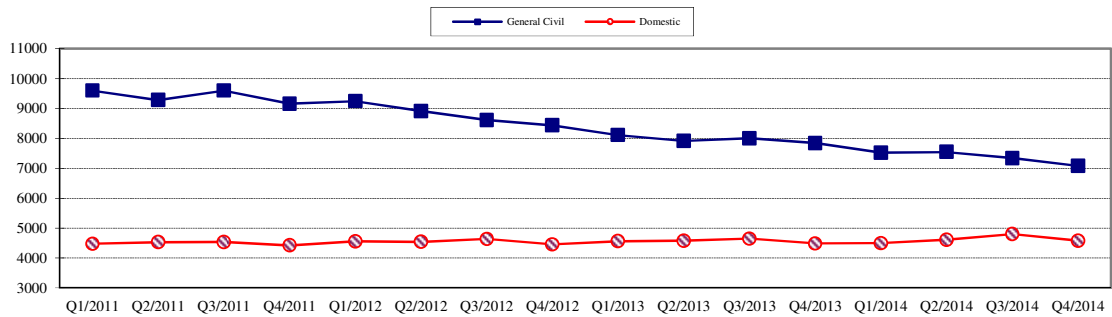
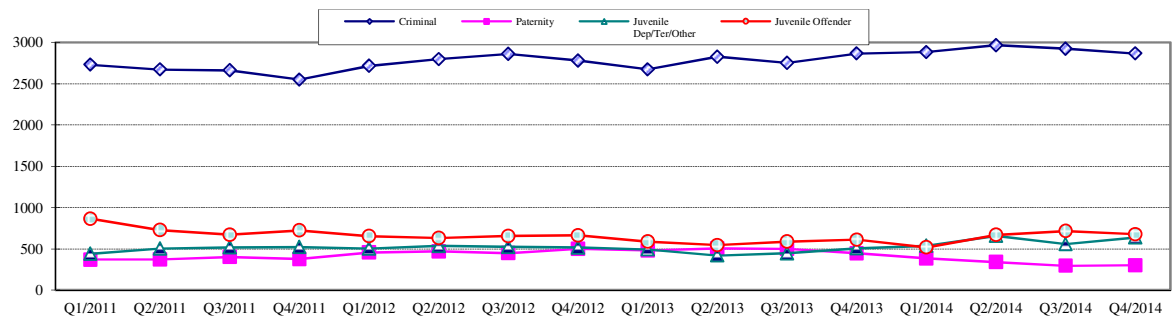


Chart 4-C. Active Pending Caseload at Quarter End:
Criminal, Juvenile Offender, Paternity and Dependency Cases Only



* Note: "General Civil" is specifically defined in this report. The category of "General Civil" does **not** include the following case types: domestic, probate, guardianship, adoption, paternity, mental illness, juvenile cases (dependency, at-risk youth, child-in-need of service), civil RALJ, and tax filings that don't require judicial resources ("matters filed with clerk"). Please check the Appendix for the cause codes in the "General Civil" category.

Table 5. Age of Pending Cases
King County Superior Court

Reporting Category	Age of Pending Cases and # of Cases in Each Age Interval							
	Q1/13	Q2/13	Q3/13	Q4/13	Q1/14	Q2/14	Q3/14	Q4/14*
Criminal (excl. RALJ): # of Cases	2673	2828	2752	2865	2883	2966	2923	2866
Age (days)								
Median (50 percentile)	116	111	117	111	110	106	120	119
95 percentile	695	703	745	771	750	754	785	794
# of Cases in Age Interval								
0 - 60 days (0 - 2 months)	833	889	861	867	966	896	854	835
61 - 120 days (3 - 4 months)	546	599	568	650	581	743	616	612
121 - 180 days (5 - 6 months)	315	382	373	366	378	380	435	383
181 - 270 days (7 - 9 months)	324	296	346	333	328	326	377	337
> 270 days (> 9 months)	655	662	604	649	630	621	641	699
General Civil: # of Cases	8112	7914	8005	7844	7518	7542	7336	7079
Age (days)								
Median (50 percentile)	179	168	165	174	172	144	153	157
95 percentile	637	633	634	658	594	566	577	577
# of Cases in Age Interval								
0 - 120 days (0 - 4 months)	3112	3212	3230	3018	2984	3380	3142	2889
121 - 240 days (5 - 8 months)	1710	1606	1829	1796	1965	1586	1793	1784
241 - 360 days (9 - 12 months)	1238	1216	1151	1250	1239	1176	1035	1209
361 - 540 days (13 - 18 months)	1333	1235	1138	1083	1089	941	923	760
541 - 720 days (19 - 24 months)	419	373	357	378	305	290	258	237
> 720 days (> 24 months)	300	272	300	319	206	169	185	200
Asbestos Cases (civil) ⁽¹⁾ : # of Cases	81	80	81	92	77	70	71	69
Age (days)								
Median (50 percentile)	388	280	264	296	351	372	371	374
95 percentile	3244	3342	2441	2533	778	851	897	916
# of Cases in Age Interval								
0 - 120 days (0 - 4 months)	20	26	17	18	10	12	13	10
121 - 240 days (5 - 8 months)	10	10	21	13	15	10	11	14
241 - 360 days (9 - 12 months)	8	12	9	23	14	11	9	9
361 - 540 days (13 - 18 months)	11	11	13	14	25	22	14	14
541 - 720 days (19 - 24 months)	6	2	5	8	7	8	17	15
> 720 days (> 24 months)	26	19	16	16	6	7	7	7
Domestic: # of Cases	4562	4580	4650	4486	4499	4609	4802	4579
Age (days)								
Median (50 percentile)	117	116	112	127	130	109	112	129
95 percentile	502	508	517	527	557	548	548	593
# of Cases in Age Interval								
0 - 120 days (0 - 4 months)	2327	2361	2443	2181	2182	2486	2555	2168
121 - 240 days (5 - 8 months)	1218	1128	1207	1214	1241	1065	1221	1388
241 - 360 days (9 - 12 months)	589	688	568	644	595	601	533	561
361 - 540 days (13 - 18 months)	221	198	215	229	248	223	246	197
> 540 days (> 18 months)	207	205	217	218	233	234	247	265
Probate: # of Cases	696	588	650	768	850	861	905	908
Age (days)								
Median (50 percentile)	559	403	415	382	418	494	538	630
95 percentile	2371	1970	2021	2063	2085	2164	2241	2333
# of Cases in Age Interval								
0 - 120 days (0 - 4 months)	144	133	142	192	173	153	140	116
121 - 240 days (5 - 8 months)	74	92	84	93	134	95	115	83
241 - 360 days (9 - 12 months)	64	52	74	83	82	104	66	82
361 - 540 days (13 - 18 months)	60	70	81	89	112	113	134	120
> 540 days (> 18 months)	354	241	269	311	349	396	450	497

Reflecting all documents received by 01/15/2015.

Table 5 (cont.). Age of Pending Cases

King County Superior Court

Reporting Category	Age of Pending Cases and # of Cases in Each Age Interval							
	Q1/13	Q2/13	Q3/13	Q4/13	Q1/14	Q2/14	Q3/14	Q4/14*
Guardianship: # of Cases	279	302	310	303	334	320	316	301
Age (days)								
Median (50 percentile)	73	65	76	103	83	91	100	86
95 percentile	560	474	489	575	580	657	744	798
# of Cases in Age Interval								
0 - 120 days (0 - 4 months)	172	199	190	166	198	181	172	166
121 - 240 days (5 - 8 months)	49	41	50	52	43	45	44	37
241 - 360 days (9 - 12 months)	24	30	37	35	30	25	32	28
361 - 540 days (13 - 18 months)	19	18	21	31	43	37	31	21
> 540 days (> 18 months)	15	14	12	19	20	32	37	49
Adoption: # of Cases	222	200	187	166	200	158	151	149
Age (days)								
Median (50 percentile)	216	151	137	155	159	120	127	120
95 percentile	1393	1467	1383	1629	1526	1562	832	924
# of Cases in Age Interval								
0 - 120 days (0 - 4 months)	88	90	89	72	86	81	71	75
121 - 240 days (5 - 8 months)	30	23	36	23	38	25	35	25
241 - 360 days (9 - 12 months)	24	19	14	20	14	19	14	19
361 - 540 days (13 - 18 months)	27	28	19	19	24	9	14	13
> 540 days (> 18 months)	53	40	29	32	38	24	17	17
Paternity: # of Cases	479	506	500	446	384	338	295	300
Age (days)								
Median (50 percentile)	102	87	106	119	91	96	100	86
95 percentile	294	279	305	279	320	327	334	320
# of Cases in Age Interval								
0 - 120 days (0 - 4 months)	262	327	309	230	237	210	173	183
121 - 240 days (5 - 8 months)	176	135	147	179	112	92	88	77
241 - 360 days (9 - 12 months)	32	35	30	24	22	23	23	28
361 - 540 days (13 - 18 months)	8	7	12	11	9	10	5	7
> 540 days (> 18 months)	1	2	2	2	4	3	6	5
Mental Illness: # of Cases	378	390	294	104	119	137	120	121
Age (days)								
Median (50 percentile)	172	256	259	197	70	50	113	150
95 percentile	1595	1680	1877	2196	546	629	725	813
# of Cases in Age Interval								
0 - 120 days (0 - 4 months)	137	79	94	47	66	79	61	59
121 - 240 days (5 - 8 months)	134	95	37	12	10	13	11	9
> 240 days (> 8 months)	107	216	163	45	43	38	48	53
Juv DEP/TER: # of Cases	492	419	447	507	537	657	557	639
Age (days)								
Median (50 percentile)	135	66	77	98	88	88	112	99
95 percentile	1116	558	610	597	593	580	750	762
# of Cases in Age Interval								
0 - 60 days (0 - 2 months)	155	197	182	205	213	248	162	207
61 - 120 days (3 - 4 months)	72	103	93	100	109	159	140	153
121 - 180 days (5 - 6 months)	61	37	71	65	72	75	96	68
181 - 270 days (7 - 9 months)	41	33	35	45	59	63	67	83
> 270 days (> 9 months)	163	49	66	92	84	112	92	128
Juv. ARY/CHINS/OTHER: # of Cases	101	75	86	94	105	111	114	119
Age (days)								
Median (50 percentile)	276	577	413	376	162	222	238	248
95 percentile	2534	2678	2717	2809	2850	2941	3033	3125
# of Cases in Age Interval								
0 - 60 days (0 - 2 months)	26	13	19	26	29	32	35	24
61 - 120 days (3 - 4 months)	7	5	12	9	15	8	10	20
121 - 180 days (5 - 6 months)	6	4	1	4	11	12	8	9
181 - 270 days (7 - 9 months)	11	5	4	3	5	11	8	8
> 270 days (> 9 months)	51	48	50	52	45	48	53	58

* Reflecting all documents received by 01/15/2015.

Table 5 (cont.). Age of Pending Cases
King County Superior Court

Reporting Category	Age of Pending Cases and # of Cases in Each Age Interval							
	Q1/13	Q2/13	Q3/13	Q4/13	Q1/14	Q2/14	Q3/14	Q4/14*
Juvenile Truancy: # of Cases	382	467	210	326	315	508	477	821
Age (days)								
Median (50 percentile)	26	68	494	167	154	75	159	76
95 percentile	673	620	971	948	1041	837	940	995
# of Cases in Age Interval								
0 - 60 days (0 - 2 months)	226	182	11	139	105	190	25	321
61 - 120 days (3 - 4 months)	19	126	6	21	41	112	83	149
121 - 180 days (5 - 6 months)	17	21	28	3	17	24	176	1
181 - 270 days (7 - 9 months)	1	23	32	20	4	32	24	168
> 270 days (> 9 months)	119	115	133	143	148	150	169	182
Juvenile Offender: # of Cases	588	546	587	612	518	668	716	677
Age (days)								
Median (50 percentile)	80	76	81	74	97	75	92	90
95 percentile	681	508	545	517	581	620	545	627
# of Cases in Age Interval								
0 - 60 days (0 - 2 months)	250	219	231	267	180	281	232	253
61 - 120 days (3 - 4 months)	114	145	151	133	121	167	201	139
121 - 180 days (5 - 6 months)	76	51	67	79	63	70	103	90
181 - 270 days (7 - 9 months)	63	55	47	45	59	46	75	85
> 270 days (> 9 months)	85	76	91	88	95	104	105	110
Criminal RALJ: # of Cases	144	147	147	143	146	133	138	155
Age (days)								
Median (50 percentile)	160	157	144	141	147	169	154	146
95 percentile	420	392	384	391	400	410	499	591
# of Cases in Age Interval								
0 - 60 days (0 - 2 months)	26	34	34	34	31	23	31	33
61 - 120 days (3 - 4 months)	29	27	24	24	33	22	24	28
121 - 180 days (5 - 6 months)	30	24	30	28	23	29	20	30
181 - 270 days (7 - 9 months)	30	33	28	32	31	32	29	28
> 270 days (> 9 months)	29	29	31	25	28	27	34	36
Civil RALJ: # of Cases	32	22	24	38	29	34	30	28
Age (days)								
Median (50 percentile)	192	88	58	84	111	114	117	103
95 percentile	376	375	231	323	334	335	427	388
# of Cases in Age Interval								
0 - 60 days (0 - 2 months)	5	5	12	12	7	12	4	7
61 - 120 days (3 - 4 months)	3	9	5	14	10	9	11	9
121 - 180 days (5 - 6 months)	8	3	5	8	7	3	8	5
181 - 270 days (7 - 9 months)	7	2	1	2	2	8	3	5
> 270 days (> 9 months)	9	3	1	2	3	2	4	2

* Reflecting all documents received by 01/15/2015.

Table 6. Seattle vs. Regional Justice Center (KNT): Filing, Resolution, Pending Caseload (%)

King County Superior Court

	Q4/13		Q1/14		Q2/14		Q3/14		Q4/14	
	SEA	KNT	SEA	KNT	SEA	KNT	SEA	KNT	SEA	KNT
Filings Total <i>(excl. filings with clerk)</i>	67%	33%	63%	37%	64%	36%	65%	35%	63%	37%
Criminal (excl. RALJ)	60%	40%	52%	48%	51%	49%	55%	45%	52%	48%
General Civil (excl. RALJ)	58%	42%	57%	43%	57%	43%	56%	44%	55%	45%
Domestic	63%	37%	64%	36%	63%	37%	62%	38%	60%	40%
Probate	80%	20%	74%	26%	77%	23%	78%	22%	77%	23%
Guardianship	65%	35%	63%	37%	64%	36%	57%	43%	62%	38%
Adoption	74%	26%	83%	17%	81%	19%	69%	31%	76%	24%
Paternity	41%	59%	49%	51%	46%	54%	41%	59%	53%	47%
Mental Illness	100%	---	100%	---	100%	---	100%	---	100%	---
Juv. DEP/TER/Other	44%	56%	44%	56%	51%	49%	51%	49%	54%	46%
Juvenile ARY/CHINS	52%	48%	46%	54%	60%	40%	45%	55%	42%	58%
Juvenile Truancy	47%	53%	48%	52%	56%	44%	85%	15%	53%	47%
Juvenile Offender	100%	---	100%	---	100%	---	100%	---	100%	---
Criminal RALJ	92%	8%	91%	9%	94%	6%	96%	4%	92%	8%
Civil RALJ	100%	---	100%	---	88%	12%	100%	---	79%	21%
Resolution Total <i>(excl. filings with clerk)</i>	66%	34%	65%	35%	64%	36%	63%	37%	64%	36%
Criminal (excl. RALJ)	59%	41%	58%	42%	55%	45%	53%	47%	56%	44%
General Civil (excl. RALJ)	59%	41%	60%	40%	56%	44%	55%	45%	56%	44%
Domestic	63%	37%	63%	37%	62%	38%	65%	35%	61%	39%
Probate	79%	21%	73%	27%	77%	23%	78%	22%	77%	23%
Guardianship	60%	40%	68%	32%	61%	39%	65%	35%	59%	41%
Adoption	69%	31%	83%	17%	77%	23%	81%	19%	76%	24%
Paternity	45%	55%	45%	55%	46%	54%	47%	53%	40%	60%
Mental Illness	100%	---	100%	---	100%	---	100%	---	100%	---
Juv. DEP/TER/Other	55%	45%	49%	51%	38%	62%	47%	53%	47%	53%
Juvenile ARY/CHINS	48%	52%	53%	47%	51%	49%	44%	56%	58%	42%
Juvenile Truancy	38%	62%	47%	53%	42%	58%	32%	68%	47%	53%
Juvenile Offender	100%	---	100%	---	100%	---	100%	---	100%	---
Criminal RALJ	91%	9%	93%	7%	94%	6%	88%	12%	94%	6%
Civil RALJ	83%	17%	87%	13%	91%	9%	100%	---	88%	12%
Pending Total <i>(excl. filings with clerk)</i>	66%	34%	65%	35%	65%	35%	65%	35%	65%	35%
Criminal (excl. RALJ)	54%	46%	51%	49%	50%	50%	50%	50%	49%	51%
General Civil (excl. RALJ)	69%	31%	67%	33%	67%	33%	68%	32%	68%	32%
Domestic	62%	38%	62%	38%	63%	37%	62%	38%	62%	32%
Probate	83%	17%	84%	16%	82%	18%	83%	17%	82%	18%
Guardianship	67%	33%	63%	37%	65%	35%	59%	41%	62%	38%
Adoption	80%	20%	80%	20%	84%	16%	76%	24%	74%	26%
Paternity	50%	50%	53%	47%	54%	46%	52%	48%	59%	41%
Mental Illness	100%	---	100%	---	100%	---	100%	---	100%	---
Juv. DEP/TER/Other	49%	51%	45%	55%	50%	50%	52%	48%	55%	45%
Juvenile ARY/CHINS	72%	28%	66%	34%	73%	27%	73%	27%	64%	36%
Juvenile Truancy	60%	40%	62%	38%	59%	41%	65%	35%	59%	41%
Juvenile Offender	100%	---	100%	---	100%	---	100%	---	100%	---
Criminal RALJ	91%	9%	90%	10%	90%	10%	93%	7%	92%	8%
Civil RALJ	92%	8%	97%	3%	94%	6%	93%	7%	89%	11%

Reflecting all documents received by 01/15/2015.

Table 7. Quarterly Utilization of Pro Tem Judges/Commissioners ⁽¹⁾

Category	Q2/12	Q3/12	Q4/12	Q1/13	Q2/13	Q3/13	Q4/13	Q1/14	Q2/14	Q3/14	Q4/14
Grand Total	1173	1304	864	814	1182	1391	2546	1450	1610	1510	1510
Judge FTE Equivalent ⁽³⁾	2.6	2.9	1.9	1.8	2.6	3.1	5.7	3.2	3.6	3.4	3.4
By Work Type											
Pro Tem Judge									412	332	459
Pro Tem Commissioner									1028	1178	1051
Unspecified									170	0	0
By Location											
KCCH									532	655	916
MRJC									505	377	273
Juvenile									282	283	276
ITA									158	195	46
Other									133	0	0
By Calendar Type											
Criminal									128	75	262
Civil									74	32	22
Ex Parte									536	333	170
Family Law/Domestic									309	506	715
Dependency									217	119	133
Juvenile Offender									103	144	119
BECCA									30	20	13
ITA									158	195	46
Juvenile Drug Court									9	0	0
Family Treatment Court									6	0	0
Plea Calendar									42	71	8
Status/Non-Compliance									0	6	13
Other or Unspecified									0	10	13
By Reason											
Vacation Backfill									565	572	674
Medical Backfill									112	208	292
Duty Time									210	249	219
Conference Coverage									259	229	4
Congestion									168	80	259
Vacancy Coverage									263	109	0
Other									34	64	63

(1) This table is based on the time sheet for compensation

(2) Judge FTE Equivalent = # of hours / [7.5 hours/day * 20 days/month * 3 months] = # of hours/450.

The statistics on Pro Tem judge/commissioner use provide information on the external help the court has obtained in order to handle the workload. The data are collected on the time sheet for compensation (therefore it does not include unpaid volunteering or visiting judges/commissioners). The database on Pro Tem judges/commissioners is managed by the Administrative Services Department (ASD) of King County Superior Court. The Pro Tem total hours presented in this section are provided quarterly by ASD.

Table 8. Family Law Activity

SEATTLE	2ND QTR, 2013		3RD QTR, 2013		4TH QTR, 2013		1ST QTR, 2014		2ND QTR, 2014		3RD QTR, 2014		4TH QTR, 2014	
	HRGS	ORDS	HRGS	ORDS	HRGS	ORDS	HRGS	ORDS	HRGS	ORDS	HRGS	ORDS	HRGS	ORDS
FAM.LAW	473	1888	481	2227	458	2043	409	1984	463	2076	490	2127	490	2248
DAILY AVG.	8	31	8	37	8	33	7	33	8	34	8	35	8	37
PATERNITY	40	1434	42	1506	49	1207	97	1437	78	1309	61	1133	53	1270
DAILY AVG.	1	24	1	25	1	20	2	24	1	21	1	19	1	21
DOM. VIOL.	238	481	250	534	211	439	252	512	229	476	267	563	234	484
DAILY AVG.	4	8	4	9	3	7	4	8	4	8	4	9	4	8
KENT														
KENT	2ND QTR, 2013		3RD QTR, 2013		4TH QTR, 2013		1ST QTR, 2014		2ND QTR, 2014		3RD QTR, 2014		4TH QTR, 2014	
	HRGS	ORDS	HRGS	ORDS	HRGS	ORDS	HRGS	ORDS	HRGS	ORDS	HRGS	ORDS	HRGS	ORDS
FAM.LAW	451	1635	436	1793	449	1733	382	1685	458	1629	473	1569	380	1637
DAILY AVG.	7	27	7	29	7	28	6	28	8	27	8	26	6	27
PATERNITY	144	1154	82	1227	62	1088	61	1196	51	1008	58	910	60	960
DAILY AVG.	2	19	1	20	1	18	1	20	1	17	1	15	1	16
DOM. VIOL.	370	443	429	546	363	532	332	501	444	567	496	620	432	562
DAILY AVG.	6	7	7	9	6	9	5	8	7	9	8	10	7	9
GRAND TOTAL														
GRAND TOTAL	2ND QTR, 2013		3RD QTR, 2013		4TH QTR, 2013		1ST QTR, 2014		2ND QTR, 2014		3RD QTR, 2014		4TH QTR, 2014	
	HRGS	ORDS	HRGS	ORDS	HRGS	ORDS	HRGS	ORDS	HRGS	ORDS	HRGS	ORDS	HRGS	ORDS
TOTAL	1716	7035	1720	7833	1592	7042	1533	7315	1723	7065	1845	6922	1649	7161
OVERALL DAILY AVG.	28	115	28	128	26	115	25	120	28	116	30	113	27	117

The statistics on family law and Ex Parte activity are obtained directly from SCOMIS using the appropriate docket codes.

Table 9. Ex Parte Activity

SEATTLE	4TH QTR, 2013		1ST QTR, 2014		2ND QTR, 2014		3RD QTR, 2014		4TH QTR, 2014	
	HRGS	ORDS	HRGS	ORDS	HRGS	ORDS	HRGS	ORDS	HRGS	ORDS
ADOP/PAT	104	322	62	216	91	311	68	229	97	303
DOM. VIOL.	9	338	9	373	10	399	8	374	3	350
OTH. CIVIL	323	573	247	531	346	528	315	481	256	457
DOMESTIC	662	2146	532	1761	566	1994	544	1791	585	1869
PROB/GDN	1336	2430	1220	2257	1342	2332	1268	2171	1283	2208
SUBTOTAL	2434	5809	2070	5138	2355	5564	2203	5046	2224	5187
DAILY AVG.	40	95	34	84	39	91	36	83	36	85

SEATTLE VIA CLERK (starting Jan 2009)	4TH QTR, 2013		1ST QTR, 2014		2ND QTR, 2014		3RD QTR, 2014		4TH QTR, 2014	
	----	ORDS	----	ORDS	----	ORDS	----	ORDS	----	ORDS
ADOP/PAT	----	151	----	108	----	115	----	96	----	110
DOM. VIOL.	----	5	----	1	----	3	----	5	----	1
OTH. CIVIL	----	4997	----	4871	----	4852	----	4844	----	4418
DOMESTIC	----	1397	----	1325	----	1442	----	1429	----	1431
PROB/GDN	----	792	----	749	----	819	----	793	----	799
SUBTOTAL	----	7342	----	7054	----	7231	----	7167	----	6759
DAILY AVG.	----	120	----	116	----	119	----	117	----	111

SEATTLE MAIL-IN	4TH QTR, 2013		1ST QTR, 2014		2ND QTR, 2014		3RD QTR, 2014		4TH QTR, 2014	
	----	ORDS	----	ORDS	----	ORDS	----	ORDS	----	ORDS
ADOP/PAT	----	0	----	2	----	3	----	3	----	0
DOM. VIOL.	----	0	----	0	----	0	----	1	----	1
OTH. CIVIL	----	125	----	159	----	100	----	117	----	186
DOMESTIC	----	37	----	35	----	30	----	29	----	32
PROB/GDN	----	65	----	79	----	92	----	66	----	58
SUBTOTAL	----	227	----	275	----	225	----	216	----	277
DAILY AVG.	----	4	----	5	----	4	----	4	----	5

Note: Ex Parte via Clerk started in January 2009.

Table 9 (cont). Ex Parte Activity

KENT	4TH QTR, 2013		1ST QTR, 2014		2ND QTR, 2014		3RD QTR, 2014		4TH QTR, 2014	
	HRGS	ORDS	HRGS	ORDS	HRGS	ORDS	HRGS	ORDS	HRGS	ORDS
ADOP/PAT	48	155	21	82	24	102	23	92	30	107
DOM. VIOL.	4	376	2	444	1	479	3	531	0	437
OTH. CIVIL	263	449	300	466	324	521	332	543	315	493
DOMESTIC	395	1366	330	1281	319	1282	313	1381	382	1392
PROB/GDN	468	894	444	912	486	900	373	759	397	737
SUBTOTAL	1178	3240	1097	3185	1154	3284	1044	3306	1124	3166
DAILY AVG.	19	53	18	52	19	54	17	54	18	52

KENT VIA CLERK (starting Jan 2009)	4TH QTR, 2013		1ST QTR, 2014		2ND QTR, 2014		3RD QTR, 2014		4TH QTR, 2014	
	----	ORDS	----	ORDS	----	ORDS	----	ORDS	----	ORDS
ADOP/PAT	----	39	----	40	----	46	----	39	----	40
DOM. VIOL.	----	3	----	2	----	1	----	2	----	0
OTH. CIVIL	----	3020	----	2813	----	2665	----	2861	----	2466
DOMESTIC	----	479	----	460	----	491	----	525	----	567
PROB/GDN	----	259	----	293	----	277	----	306	----	289
SUBTOTAL	----	3800	----	3608	----	3480	----	3733	----	3362
DAILY AVG.	----	62	----	59	----	57	----	61	----	55

KENT MAIL-IN	4TH QTR, 2013		1ST QTR, 2014		2ND QTR, 2014		3RD QTR, 2014		4TH QTR, 2014	
	----	ORDS	----	ORDS	----	ORDS	----	ORDS	----	ORDS
ADOP/PAT	----	0	----	0	----	2	----	1	----	1
DOM. VIOL.	----	0	----	0	----	0	----	0	----	0
OTH. CIVIL	----	25	----	25	----	34	----	46	----	37
DOMESTIC	----	12	----	14	----	11	----	21	----	8
PROB/GDN	----	27	----	22	----	19	----	31	----	29
SUBTOTAL	----	64	----	61	----	66	----	99	----	75
DAILY AVG.	----	1	----	1	----	1	----	2	----	1

ALL SEATTLE AND KENT	4TH QTR, 2013		1ST QTR, 2014		2ND QTR, 2014		3RD QTR, 2014		4TH QTR, 2014	
	HRGS	ORDS	HRGS	ORDS	HRGS	ORDS	HRGS	ORDS	HRGS	ORDS
GRAND TOTAL	3612	20483	3167	19322	3509	19851	3247	19568	3348	18827
DAILY AVERAGE	59.2	335.8	51.9	316.8	57.5	325.4	53.2	320.8	54.9	308.6

Note: Ex Parte via Clerk started in January 2009.

Appendix Glossary and Definition

General Definition

Active Status

A case is active if it is not on suspense status (see Suspense Status).

Case

A case is defined as a filing with an assigned case number (or a case number plus a defendant connection code in pre-1990 criminal filings).

Completion

A case is completed when dispositive document is filed with the court following resolution.

Jury Trial

A hearing is reported as a jury trial if the jury is impaneled.

New Case

A new case is an original filing with new case number assigned.

Non-Jury Trial

A hearing is reported as a non-jury trial if an opening statement is made, waived, or reserved. A juvenile fact finding hearings is reported as a non-jury trial.

Pending Case

A case is defined as pending if it is unresolved and active (not in suspense).

Reactivated Case

A case returns to active status from suspense status during the reporting period.

Re-opened Cases

A case is re-opened if it has been previously completed but returns to the court for supplement or change of the original case resolution. A re-opened case does not have a new case number. Only resolved cases can be "re-opened". (Note: measurement not available as of July 1996. SCOMIS capacity may exist after conversion to DB2 in the future).

Resolution

A case is resolved if all issues in the complaint are fully adjudicated.

Suspended Case

A case is placed in suspense status from active status during the reporting period.

Suspense Status

A case is on suspense status if it is on warrant, appeal, stay, mediation, arbitration ("Deferred Prosecution" is not a suspense status, but is treated as a resolution).

Trial

A hearing set before a judge or jury in which all the issues in the case are meant to be resolved. A trial normally includes opening statements to the court or jury stating what the evidence will show, introduction of witnesses and exhibits for direct and cross examination, final arguments to the court or jury in which counsel argue both the evidence and the law, and judgment by the court or jury stating what the facts of the case are and what law applies to the facts. In a jury case, it also includes the selection of the jury. A trial can be held

for one or more cases. A single trial may be held to adjudicate more than one case (as defined above).

Post-resolution Modifications

In this report, we also report the post-resolution modifications for case type 3 (domestic) and 5 (paternity). These numbers are based on the tracks (DMOD and DTBA) opened after the original resolution date (i.e., if the track beginning date is after the resolution date).

Section I. Filing Activity

Additional Filings with Clerk

Filings with clerk without assigning a SCOMIS case number. This reporting category consists of search warrants, wire taps, extradition, oaths and orders pertaining to Pro Tem judge/commissioners/Court

Reporters/Bailiffs, and other "non-case" filings as recorded under 12050 system.

Annual Filings

Total number of new case filings during the calendar year (January 1 to December 31).

Adoption Cases

This reporting category includes the following "cause-of-action" codes within SCOMIS case type 5:

- Relinquishment (REL)
- Termination of Parent/Child Relationship (TER)
- Adoption (ADP)
- Miscellaneous (MSC)
- Name Change - Confidential (CHN)
- Initial Pre-Placement Report Filed with Clerk (PPR)

General Civil Cases

"General Civil" cases include all civil matters other than Domestic, Probate, Guardianship, Adoption, Paternity and appeals from courts of limited jurisdiction and "Matters Filed with Clerk". "General civil" cases include small claims as identified by the "Small Claim Track". This reporting category includes the following "cause-of-action" codes within SCOMIS case type 2:

- Administrative Law Review (ALR)
- Change of Name - Non-Confidential (CHN)
- Collection (COL)
- Commercial (COM)
- Condemnation (CON)
- Domestic Violence Protection (DVP)
- Emancipation of Minor (EOM)
- Foreclosure (FOR)
- Civil Harassment (HAR)
- Injunction (INJ)
- Other Malpractice (MAL)
- Medical Malpractice (MED)
- Meretricious Relationship (MER)
- Malicious Harassment (MHA)
- Miscellaneous (MSC)
- Minor Settlement (MST) - as of 10/1/96, under Guardianship
- Petition of Civil Commitment- Sexual Predator (PCC)
- Property Fairness (PFA)

- Personal Injury (PIN)
- Property Damage (PRP)
- Quiet Title (QTI)
- Small Claims (LCA/LCI on “Small Claim Track”)
- Seizure of Property from the Commission of a Crime (SPC)
- Seizure of Property Resulting from a Crime (SPR)
- Tort Motor Vehicle (TMV)
- Tort Other (TTO)
- Unlawful Detainer (UND)
- Wrongful Death (WDE)
- Writ of Habeas Corpus (WHC)
- Miscellaneous Writ (WMW)
- Writ of Mandamus (WRM)
- Writ of Restitution (WRR)
- Writ of Review (WRV)

Civil RALJ Cases

Civil appeals from courts of limited jurisdiction (excluding small claims as identified by the “Small Claim Track”). Civil RALJ includes the following “cause-of-action” reporting categories:

- Lower Court Appeal - Civil and “Not a Small Claim”
- Lower Court Appeal - Infraction and “Not a Small Claim”

Note: The Civil RALJ cases are determined based on both SCOMIS “cause-of-action” code (LCA and LCI) within SCOMIS case type 2 and the “Small Claim Track”.

Criminal Cases (excl. RALJ)

Adult criminal cases, excluding appeals from courts of limited jurisdiction. This reporting category includes the following crime categories within SCOMIS case type 1:

- Homicide
- Sex Crime
- Robbery
- Assault
- Theft/Burglary
- Motor Vehicle Theft
- Controlled Substance
- Other Felony
- Others (Misdemeanor, Non-charge Case)

Criminal RALJ Cases

Criminal appeals from courts of limited jurisdiction. This reporting category includes all SCOMIS case type 1 cases that have an appeal from lower court field of “Yes”.

Domestic Cases

This reporting category includes the following “cause-of-action” codes within SCOMIS case type 3:

- Annulment – Invalidity (INV)
- Child Custody (CUS)
- Dissolution With Children Of The Marriage (DIC)
- Dissolution With No Children Of The Marriage (DIN)
- Dissolution of Domestic Partnership – With Children (DPC)
- Dissolution of Domestic Partnership – With No Children (DPN)
- Foreign Judgment (FJU)
- Invalidity – Domestic Partnership (INP)
- Mandatory Wage Assignment (MWA)
- Miscellaneous (MSC)
- Modification (MOD)
- Modification – Support Only (MDS)
- Out-Of-State Child Custody (OSC)
- Parenting Plan / Child Support (PPS)
- Reciprocal, Respondent In-County (RIC)
- Reciprocal, Respondent Out-of-County (ROC)
- Legal Separation (SEP)
- Legal Separation – Domestic Partnership (SPD)

Guardianship Cases

This reporting category includes the following “cause-of-action” codes within SCOMIS case type 4:

- Guardianship/Estate (G/E)
- Guardianship (GND)
- Limited Guardianship (LGD)
- Minor Settlement (MST)

Juvenile ARY/CHINS Cases

Juvenile dependency cases, excluding truancy cases and DEP cause code. This reporting category includes following “cause-of-action” codes within SCOMIS case type 7:

- Alternative Residential Placement (ARP)
- At-Risk Youth (ARY)
- Child in Need of Service (CNS)

Juvenile Dependency Cases

This reporting category includes following “cause-of-action” codes within SCOMIS case type 7:

- Dependency (DEP)
- Termination (TER)
- Developmental Disability (DDP)
- Guardianship Foster Children (GFC)
- Reinstatement of Parental Rights (RPR)
- Extension of Foster Care (EFC)
- Relative Visitation (RVS)

Juvenile Offender Cases

This reporting category includes the following crime categories in SCOMIS case type 8:

- Homicide
- Sex Crime
- Robbery
- Assault
- Theft/Burglary
- Motor Vehicle Theft
- Controlled Substance
- Other Felony
- Others (Misdemeanor, Non-charge Case)

Juvenile Truancy Cases

Mandatory truancy filings started on 10/01/1995. This reporting category includes the following “cause-of-action” code within SCOMIS case type 7:

- Truancy (TRU)

Matters Filed with Clerk

Filings with clerk (case numbers assigned), but requiring little or no judicial action. This reporting category includes the following “cause-of-action” codes within SCOMIS case type 2:

- Abstract of Judgment (ABJ)
- Foreign Judgment (FJU)
- Tax Warrant (TAX)
- Transcripts of Judgment (TRJ)

Mental Illness Cases

This reporting category includes all “cause-of-action” codes within SCOMIS case type 6:

- Alcoholic Treatment (ALT)
- Mental Illness - Adult (MI)
- Mental Illness - Juvenile (MIJ)

Paternity Cases

This reporting category includes the following “cause-of-action” codes within SCOMIS case type 5:

- Modification (MOD)
- Paternity (PAT)
- Paternity/URES/UISA (PUR)

Probate Cases

This reporting category includes the following “cause-of-action” codes within SCOMIS case type 4:

- Absentee (ABS)
- Disclaimer (DSC)
- Estate (EST)
- Foreign Will (FNW)
- Miscellaneous (MSC)
- Non-Probate Notice to Creditors (NNC)
- Will Only (WLL)

Total Cases

New cases with case numbers assigned, excluding “Matters Filed with Clerk” and “Additional Filings with Clerk”.

Year-to-Date Filings

Total number of new filings since the beginning of calendar year (January 1) to the end of reporting period.

Section II. Resolution Category

Adoption - Resolved by Trial

Court Decision after Non-Jury Trial (CDAT)

Adoption - Uncontested

Consolidated Case (CONS)
Uncontested Resolution (UNDS)

Adoption - Settlement/Dismissal

Closed by Court Order after a Hearing (CLCO)
Dismissal without Trial (DSM)
Dismissal after Non-Jury Trial Commencement (DAT)
Settled after Non-Jury Trial Commencement (SAT)
Settled by Parties/Agreed Judgment (STPR)

Adoption - Closure by Clerk

Dismissal/Closure by Clerk (DSCK)

Adoption - Others

Change of Venue/Jurisdiction (CHV)
Other Non-specified Resolutions

Civil - Resolved by Jury Trial

Jury Verdict after Trial (JVAT)

Civil - Resolved by Non-Jury Trial

Court Decision after Non-Jury Trial (CDAT)

Civil - Summary Judgment

Summary Judgment (SMJG)

Civil - Default/Uncontested

Consolidated Case (CONS)
Default Judgment (DFJG)
Uncontested Resolution (UNDS)

Civil - Arbitration

Settle by Arbitration (ARBA)

Civil - Settlement/Dismissal

Closed by Court Order after a Hearing (CLCO)
Dismissal after Non-Jury Trial (DAT)
Dismissal after Jury Trial (DJT)
Dismissal (DSM)
Settled after Non-Jury Trial Commencement (SAT)
Settled after Jury Trial Commencement (SJT)
Settled by Parties/Agreed Judgment (STPR)

Civil - Closure by Clerk

Dismissal/Closure by Clerk (DSCK)

Civil - Others

Transferred to Federal bankruptcy Court (BANK)
Change of Venue/Jurisdiction (CHV)
Other Non-specified Resolutions

Civil RALJ - RALJ Decision

Court Decision to Affirm Appeal/review (CDTA)
Court Decision to Modify Appeal/Review (CDTM)
Court Decision to Reverse Appeal/review (CDTR)

Civil RALJ - Dismissal

Dismissal and Remand of Appeal/Review (DSRM)

Civil RALJ - Others

Other Non-specified Resolutions

Comparison with Court Standard

Percentage of cases actually falling within the Court’s standard benchmark.

Court Standard

Benchmarks set by a state advisory committee and adopted by the court indicating percentage of cases to be resolved at certain age (in months, 1 month = 30 days as used in the Advisory Case Processing Time Standard as published in the Court Rule).

Court standard is based on timelines as suggested by State Advisory Committee. For a case type with no time standard, the standard for a similar case type is adopted if appropriate.

Criminal: 90% by 4 months, 98% by 6 months, 100% by 9 months.

Civil: 90% by 12 months, 98% by 18 months, 100% by 24 months.

Domestic: 90% by 8 months, 98% by 10 months, 100% by 14 months.

Probate/Guardianship: 90% by 8 months, 98% by 18 months, 100% by 36 months.

Adoption/Paternity: 90% by 8 months, 98% by 10 months, 100% by 14 months.

Mental Illness/Juvenile Truancy: No standard yet.

Juvenile Dependency: 90% by 8 months, 98% by 10 months, 100% by 14 months.

Juvenile Offender: 90% by 4 months, 98% by 6 months, 100% by 9 months.

Criminal RALJ/Civil RALJ: 90% by 4 months, 98% by 5 months, 100% by 6 months.

Criminal - Resolved by Jury Trial

Acquittal by Jury (AQJV)
Convicted - Jury Verdict after Trial (CVJV)

Criminal - Resolved by Non-Jury Trial

Acquittal by Court (AQCT)
Convicted - Court Decision after Non-Jury Trial (CVCT)

Criminal - Resolved by Guilty Plea

Guilty Plea (GP)
Guilty Plea after Non-Jury Trial Commencement (GPAT)
Guilty Plea after Jury Trial Commencement (GPJT)

Criminal - Dismissal

Dismissal after Non-Jury Trial Commencement (DAT)
Dismissal after Jury Trial Commencement (DJT)
Dismissal (DSM)

Criminal - Others

Change of Venue (CHV)
Consolidated Case (CONS)
Continued Order of Prosecution with Completion (CTOP)*
Deferred Prosecution (DFPD)
Dismissal/Closure by Clerk (DSCK)
Governor’s warrant (GW)
Not Guilty by Reason of Insanity (NGRI)
Uncontested Resolution (UNDS)
Waiver of Extradition (WE)
Other Non-specified Resolutions

* Note: For adult criminal cases, “CTOP” does not necessarily constitute resolution. An adult criminal case with a “CTOP” as resolution code is counted as a resolved case only if a completion code exists along with the “CTOP”. If the resolution code is CTOP and there is no completion code, then the case is treated as unresolved. The primary reason for combining “CTOP” with a completion code is to determine resolution for drug court cases (CTOP is entered in the

SCOMIS resolution field as soon as a defendant enrolls in Drug Court). This rule on “CTOP” applies to adult criminal cases only.

Criminal RALJ - RALJ Decision

Court Decision to Affirm Appeal/review (CDTA)
Court Decision to Modify Appeal/Review (CDTM)
Court Decision to Reverse Appeal/review (CDTR)

Criminal RALJ - Dismissal

Dismissal and Remand of Appeal/Review (DSRM)

Criminal RALJ - Others

Other Non-specified Resolutions

Domestic - Resolved by Trial

Court Decision after Non-Jury Trial (CDAT)

Domestic - Default/Uncontested

Consolidated Case (CONS)
Default Judgment (DFJG)
Uncontested Resolution (UNDS)

Domestic - Settlement/Dismissal

Settled by Arbitration (ARBA)
Closed by Court Order after a Hearing (CLCO)
Dismissal after Non-Jury Trial Commencement (DAT)
Dismissal (DSM)
Settled after Non-Jury Trial Commencement (SAT)
Settled by Parties/Agreed Judgment (STPR)

Domestic - Closure by Clerk

Dismissal/Closure by Clerk (DSCK)

Domestic - Others

Change of Venue/Jurisdiction (CHV)
Summary Judgment (SMJG)
Other Non-specified Resolutions

Guardianship - Guardian Appointed

Guardian Appointed (PRGA)

Guardianship - Dismissal

Closed by Court Order after a Hearing (CLCO)
Dismissal (DSM)

Guardianship - Closure by Clerk

Dismissal/Closure by Clerk (DSCK)

Guardianship - Others

Change of Venue/Jurisdiction (CHV)
Consolidated Case (CONS)
Uncontested Resolution (UNDS)
Other Non-specified Resolutions

Juvenile Dependency - Finding of Dependency

Approved Petition (APP)

Juvenile Dependency - Dismissal

Dismissal (DSM)

Juvenile Dependency - Others

Change of Venue/Jurisdiction (CHV)
Consolidated Case (CONS)
Transfer of Jurisdiction (TRJU)
Other Non-specified Resolutions

Juvenile Offender - Resolved by Trial

Acquittal by Court (AQCT)
Convicted - Court Decision after Adjudictory Hearing (CVCT)

Juvenile Offender - Resolved by Guilty Plea

Guilty Plea before Adjudictory Hearing Commencement (GP)
Guilty Plea after Adjudictory Hearing Commencement (GPAT)

Juvenile Offender - Dismissal

Dismissal after Adjudictory Hearing Commencement (DAT)
Dismissal (DSM)

Juvenile Offender - Others

Change of venue (CHV)
Dismissal/Closure by Clerk (DSCK)
Consolidated Case (CONS)

Continued Prosecution (CTOP)
Decline of Jurisdiction (DECL)
Uncontested Resolution (UNDS)
Other Non-specified Resolutions

Juvenile Truancy - Finding of Truancy

Approved Petition (APP)

Juvenile Truancy - Dismissal

Dismissal (DSM)

Juvenile Truancy - Others

Change of Venue (CHV)
Consolidated Case (CONS)
Transfer of Jurisdiction (TRJU)
Other Non-specified Resolutions

Mental Illness - Court Decision to Commit

Court Decision to Commit (CDTC)

Mental Illness - Closed by Court

Closed by Court (CLCO)

Mental Illness - Dismissal

Dismissal (DSM)

Mental Illness - Others

Change of Venue/Jurisdiction (CHV)
Uncontested Resolution (UNDS)
Other Non-specified Resolutions

Paternity - Resolved by Trial

Court Decision after Non-Jury Trial (CDAT)

Paternity - Summary Judgment

Summary Judgment (SMJG)

Paternity - Default/Uncontested

Consolidated Case (CONS)
Default Judgment (DFJG)
Uncontested Resolution (UNDS)

Paternity - Settlement/Dismissal

Settled by Arbitration (ARBA)
Closed by Court Order after a Hearing (CLCO)
Dismissal after Non-Jury Trial Commencement (DAT)
Dismissal (DSM)
Settled after Non-Jury Trial Commencement (SAT)
Settled by Partied/Agreed Judgment (STPR)

Paternity - Closure by Clerk

Dismissal/Closure by Clerk (DSCK)

Paternity - Others

Change of Venue (CHV)
Other Non-specified Resolutions

Percentile

Percent of cases resolved at a given age. For example, if resolved cases had a 98 percentile of 12 months, it means that 98% of the cases were resolved within the age of 12 months, or conversely 2% of the cases were resolved after 12 months, not counting suspense time.

Probate - Personal Representative Appointed

Non-Intervention Probate (NIP)
Personal Representative Appointed (PRGA)

Probate - Dismissal

Closed by Court Order after a Hearing (CLCO)
Dismissal (DSM)

Probate - Closure by Clerk

Dismissal/Closure by Clerk (DSCK)

Probate - Others

Change of Venue (CHV)
Consolidated Case (CONS)
Uncontested Resolution (UNDS)
Other Non-specified Resolutions

Backlogged Cases

Active pending cases with an age exceeding the court-adopted time standard for each specific case type (recommended by the State Advisory Committee, see definition for *Court Standard*).

Section III. Pending Caseload

Adjustment

Adjustment made because of vacating of resolutions, or change in suspense status between two reporting period.

End Pending

Total number of pending cases at the end of reporting period.

Previous Pending

Total number of pending cases at the beginning of reporting period.

Resolution Rate

Resolution rate is defined as the ratio of number of resolutions to number of new filings (i.e., number of resolutions divided by number of new filings) during the reporting period. The resolution rate measures the relative pace of resolution in relation to the pace of new filings. A resolution rate of greater than 1 indicates the number of resolutions exceeds the number of new filings.

On-review Status

Cases that have been resolved (post-resolution) but still need court resources for periodic review and other remaining outstanding issues.

Probate (EST), Paternity (PAT) and Dependency (DEP): Resolved and not completed (paternity or dependency established, but outstanding issues remain).

Guardianship (GDN,LGD,G/E): Resolved and on tracks of G1,G2,G3,GE or GD; Minor Settlement (MST): Resolved with a future hearing date.

Section IV. Age of Pending Cases

Case Age

The age of a case is the time (number of days) since the filing date, less any suspense time if applicable.

Median Age

The median age is the time that 50% of the cases are under and 50% are above the given age. For example, if pending cases have a median age of 12 months, it means that 50% of the pending cases are within the age of 12 months, and 50% of pending cases are over 12 months. The median age is more robust to cases with extreme age values than the average age.

Suspense Time

Time (days) that a case is on suspense status before its resolution. If a case has more than one suspense between filing and resolution, the suspense time is the total from all suspenses. Time on suspense status after resolution (e.g., appeals) is not counted.