

King County Superior Court
Quarterly Statistical Report

First Quarter 2015

Department of Judicial Administration
Prepared by: Shiquan Liao, Ph.D., Statistician

Release Date: April 20, 2015

Report #: QTR-2015-1

Table 1. Year-to-Date Filing Activity

King County Superior Court

Reporting Category	Year-to-Date and Annual Filing Activity ⁽¹⁾					2014-2015 change (+ means "increase")		% of 2015 Total Filing ⁽²⁾
	2011	2012	2013	2014	2015	Cases	Percentage	
Total (incl. RALJ)								
Year-to-Date Filing	15403	14229	13636	12743	13257	+514	+4.0%	
Annual Filing	58337	54834	52755	52224				
Criminal (excl. RALJ)								
Year-to-Date Filing	1655	1538	1490	1587	1682	+95	+6.0%	12.7%
Annual Filing	5986	5942	6045	6213				
General Civil (excl. Asbestos)								
Year-to-Date Filing	6984	6400	5834	5122	5213	+91	+1.8%	39.3%
Annual Filing	27499	24477	22347	21378				
Asbestos Cases (civil)⁽³⁾								
Year-to-Date Filing	9	7	19	9	9	0	0.0%	0.1%
Annual Filing	43	36	63	40				
Domestic								
Year-to-Date Filing	1993	1961	2011	1903	1904	+1	+0.1%	14.4%
Annual Filing	7865	7678	7897	7921				
Probate								
Year-to-Date Filing	1490	1405	1606	1501	1652	+151	+10.1%	12.5%
Annual Filing	5417	5492	5844	5920				
Guardianship								
Year-to-Date Filing	204	204	210	245	221	-24	-9.8%	1.7%
Annual Filing	837	879	884	928				
Adoption								
Year-to-Date Filing	163	119	115	121	112	-9	-7.4%	0.8%
Annual Filing	688	511	483	470				
Paternity								
Year-to-Date Filing	264	334	246	197	146	-51	-25.5%	1.1%
Annual Filing	1039	1161	931	702				
Mental Illness								
Year-to-Date Filing	827	888	820	876	962	+86	+9.8%	7.3%
Annual Filing	3506	3591	3678	3852				
Juvenile Dependency (DEP)								
Year-to-Date Filing	226	207	201	246	171	-55	-24.3%	1.3%
Annual Filing	838	853	893	940				
Juvenile Termination (TER)								
Year-to-Date Filing	63	49	45	58	43	-20	-31.7%	0.3%
Annual Filing	226	200	209	325				
Juvenile ARY/CHINS/OTHERS								
Year-to-Date Filing	89	70	55	76	48	-28	-36.8%	0.4%
Annual Filing	303	242	168	285				
Juvenile Truancy								
Year-to-Date Filing	606	451	533	390	573	+183	+46.9%	4.3%
Annual Filing	1350	1271	1236	1233				
Juvenile Offender								
Year-to-Date Filing	762	538	405	363	473	+110	+30.3%	3.6%
Annual Filing	2496	2249	1808	1802				
Criminal RALJ								
Year-to-Date Filing	54	47	40	43	34	-9	-20.9%	0.3%
Annual Filing	191	192	181	172				
Civil RALJ								
Year-to-Date Filing	15	12	6	8	14	+6	+70.5%	0.1%
Annual Filing	57	63	53	47				
Matters Filed with Clerk⁽⁴⁾								
Year-to-Date Filing	3741	3825	3698	3818	2405	-1413	-37.0%	
Annual Filing	14799	15046	13763	12240				

(1) New filings only (based on filing date), excluding re-opened cases (unable to count), and reflecting all documents received by 04/15/2015.

(2) New filings of each reporting category as percentage of "Year-to-Date Filing".

(3) "Matters Filed with Clerk" and "Additional Filings with Clerk" are not included in the "Total".

Chart 1-A. Quarterly Filing Activity
Total Judicial Cases Only ("Matters Filed with Clerk" excluded)

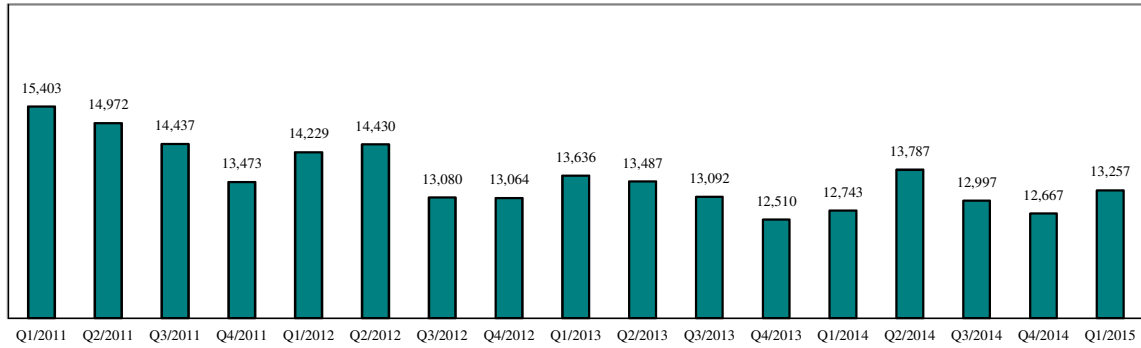
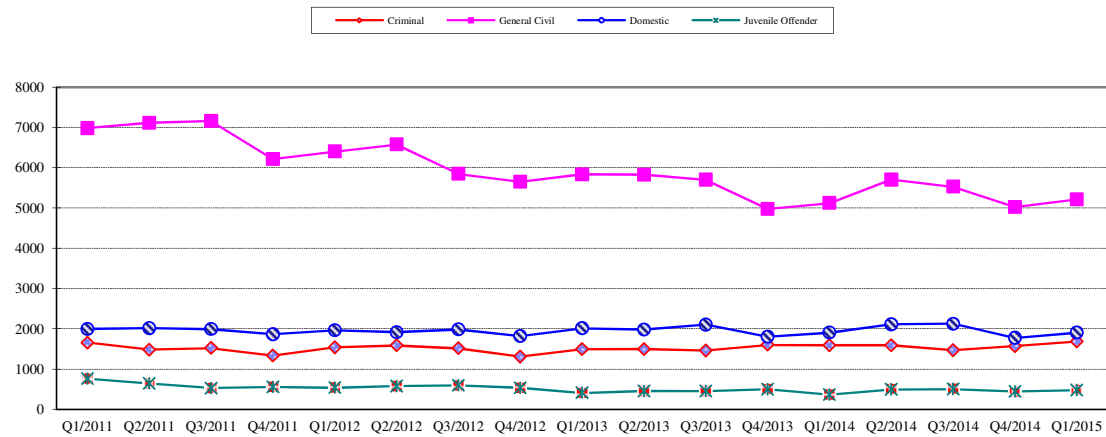


Chart 1-B. Quarterly Filings: Criminal, Domestic, General Civil and Juvenile Offender Cases Only



* Note: "General Civil" is specifically defined in this report. The category of "General Civil" does **not** include the following case types: domestic, probate, guardianship, adoption, paternity, mental illness, juvenile cases (dependency, at-risk youth, child-in-need of service, civil RALJ, and tax filings that don't require judicial resources ("matters filed with clerk"). Please check the Appendix for the cause codes in the "General Civil" category.

Table 1-A. Post-Resolution Modifications (Domestic and Paternity Cases)

Based on Tracks Opened After Original Resolution Date

Location	Case Type	2013Q1			2013Q2			2013Q3			2013Q4			Year 2013		
		DMOD	DTBA	Total	DMOD	DTBA	Total	DMOD	DTBA	Total	DMOD	DTBA	Total	DMOD	DTBA	Total
KNT	Domestic	160	47	207	149	59	208	179	45	224	152	53	205	640	204	844
	Paternity	17	7	24	13	11	24	14	3	17	11	7	18	55	28	83
KNT Total		177	54	231	162	70	232	193	48	241	163	60	223	695	232	927
SEA	Domestic	132	67	199	169	102	271	185	74	259	152	70	222	638	313	951
	Paternity	6	9	15	16	11	27	18	6	24	13	5	18	53	31	84
SEA Total		138	76	214	185	113	298	203	80	283	165	75	240	691	344	1035
KNT/SEA Total		315	130	445	347	183	530	396	128	524	328	135	463	1386	576	1962
Location	Case Type	2014Q1			2014Q2			2014Q3			2014Q4			Year 2014		
		DMOD	DTBA	Total	DMOD	DTBA	Total	DMOD	DTBA	Total	DMOD	DTBA	Total	DMOD	DTBA	Total
KNT	Domestic	144	43	187	172	66	238	183	46	229	164	42	206	663	197	860
	Paternity	15	4	19	11	7	18	13	4	17	16	6	22	55	21	76
KNT Total		159	47	206	183	73	256	196	50	246	180	48	228	718	218	936
SEA	Domestic	155	59	214	155	104	259	170	76	246	154	57	211	634	296	930
	Paternity	14	6	20	8	10	18	15	11	26	9	4	13	46	31	77
SEA Total		169	65	234	163	114	277	185	87	272	163	61	224	680	327	1007
KNT/SEA Total		328	112	440	346	187	533	381	137	518	343	109	452	1398	545	1943
Location	Case Type	2015Q1			2015Q2			2015Q3			2015Q4			Year 2015		
		DMOD	DTBA	Total	DMOD	DTBA	Total	DMOD	DTBA	Total	DMOD	DTBA	Total	DMOD	DTBA	Total
KNT	Domestic	166	37	203										166	37	203
	Paternity	14	4	18										14	4	18
KNT Total		180	41	221										180	41	221
SEA	Domestic	150	56	206										150	56	206
	Paternity	8	8	16										8	8	16
SEA Total		158	64	222										158	64	222
KNT/SEA Total		338	105	443										338	105	443

* DMOD = parenting plan modification track; DTBA = support modification track.

Table 2. Number of Cases Resolved and Resolution Category (%)

King County Superior Court

Reporting Category	Q2/13	Q3/13	Q4/13	Q1/14	Q2/14	Q3/14	Q4/14	Q1/15*
Total Resolutions (excl. "Matters Filed with Clerk")	14104	13836	13052	13126	13573	13855	13195	13228
Criminal (excl. RALJ): # Resolved	1388	1524	1364	1475	1440	1540	1535	1507
Resolved by Jury Trial	4.3%	3.3%	3.7%	3.9%	3.8%	3.2%	3.4%	3.6%
Resolved by Non-Jury Trial	1.2%	1.8%	1.2%	1.0%	1.3%	1.0%	2.0%	0.7%
Resolved by Guilty Plea	79.7%	79.9%	78.5%	78.9%	77.2%	80.6%	80.4%	78.0%
Dismissal	14.7%	14.8%	16.3%	16.0%	17.4%	15.0%	13.8%	17.7%
Others	0.1%	0.3%	0.3%	0.3%	0.2%	0.3%	0.5%	0.1%
General Civil: # Resolved	6402	6054	5478	5751	6055	6111	5650	5718
Resolved by Jury Trial	0.6%	0.6%	0.5%	0.4%	0.4%	0.4%	0.6%	0.7%
Resolved by Non-Jury Trial	0.4%	0.3%	0.4%	0.6%	0.3%	0.3%	0.4%	0.2%
Summary Judgment	1.8%	1.7%	1.9%	1.8%	2.5%	2.2%	2.2%	1.5%
Default/ Uncontested	41.9%	39.9%	36.6%	35.8%	37.9%	41.3%	37.4%	40.1%
Arbitration	2.4%	2.7%	2.6%	2.4%	2.8%	2.3%	2.7%	3.0%
Settlement/Dismissal	49.3%	51.3%	54.5%	51.5%	50.6%	49.7%	53.0%	51.1%
Closure by Clerk	2.5%	2.3%	2.5%	3.0%	2.9%	2.3%	2.3%	2.4%
Others	1.1%	1.2%	1.1%	4.5%	2.7%	1.5%	1.4%	0.9%
Asbestos Cases (civil): # Resolved	20	9	4	26	13	14	14	25
Resolved by Jury Trial	5.0%	0.0%	0.0%	0.0%	0.0%	7.1%	0.0%	0.0%
Resolved by Non-Jury Trial	0.0%	0.0%	0.0%	0.0%	0.0%	0.0%	0.0%	0.0%
Summary Judgment	5.0%	0.0%	0.0%	3.9%	7.7%	7.1%	14.3%	4.0%
Default/ Uncontested	5.0%	22.2%	0.0%	7.7%	0.0%	14.3%	14.3%	0.0%
Arbitration	0.0%	0.0%	0.0%	0.0%	0.0%	0.0%	0.0%	0.0%
Settlement/Dismissal	60.0%	77.8%	100%	80.8%	69.2%	64.3%	57.1%	64.0%
Closure by Clerk	20.0%	0.0%	0.0%	0.0%	23.1%	7.1%	14.3%	28.0%
Others	5.0%	0.0%	0.0%	0.0%	0.0%	0.0%	0.0%	4.0%
Domestic: # Resolved	1965	2055	2023	1933	2022	1963	1994	1915
Resolved by Trial	4.5%	3.8%	4.0%	4.2%	4.4%	4.3%	3.7%	3.9%
Default/ Uncontested	8.3%	11.1%	8.7%	8.6%	9.3%	9.0%	8.7%	11.3%
Settlement /Dismissal	86.3%	84.7%	86.4%	86.3%	85.5%	86.2%	87.2%	84.2%
Closure by Clerk	0.5%	0.3%	0.4%	0.5%	0.5%	0.3%	0.4%	0.3%
Others	0.4%	0.1%	0.6%	0.5%	0.4%	0.2%	0.1%	0.4%
Probate: # Resolved	1580	1319	1333	1441	1520	1454	1448	1575
Personal Rep. Appointed	66.3%	70.7%	74.6%	73.6%	71.5%	69.4%	71.7%	72.1%
Dismissal	5.0%	2.4%	1.5%	1.5%	3.4%	2.6%	3.3%	1.9%
Closure by Clerk	3.5%	0.0%	0.0%	0.0%	0.2%	0.1%	0.2%	0.0%
Others	25.2%	27.0%	23.9%	24.8%	24.9%	27.9%	24.9%	26.0%
Guardianship: # Resolved	212	232	218	214	257	237	232	204
Guardian Appointed	49.1%	54.7%	52.3%	53.3%	54.5%	52.3%	48.7%	56.4%
Dismissal	50.0%	44.8%	47.7%	46.3%	44.0%	45.6%	51.3%	43.6%
Closure by Clerk	0.0%	0.0%	0.0%	0.0%	0.4%	0.0%	0.0%	0.0%
Others	0.9%	0.4%	0.0%	0.5%	1.2%	2.1%	0.0%	0.0%
Adoption: # Resolved	123	146	155	87	152	110	139	97
Resolved by Trial	0.8%	0.7%	0.0%	0.0%	2.6%	0.9%	0.7%	0.0%
Uncontested	1.6%	3.4%	0.7%	10.3%	5.3%	7.3%	3.6%	11.3%
Settlement /Dismissal	95.9%	95.2%	98.7%	88.5%	92.1%	90.9%	95.0%	87.6%
Closure by Clerk	1.6%	0.0%	0.0%	1.2%	0.0%	0.0%	0.0%	0.0%
Others	0.0%	0.7%	0.7%	0.0%	0.0%	1.8%	0.7%	1.0%
Paternity: # Resolved	247	242	234	264	231	193	171	154
Resolved by Trial	0.8%	0.8%	1.7%	0.4%	0.9%	0.5%	1.2%	2.6%
Summary Judgment	51.4%	42.2%	49.2%	48.9%	25.1%	50.8%	53.8%	39.6%
Default/ Uncontested	23.5%	33.1%	23.9%	25.8%	32.0%	19.2%	18.1%	22.7%
Settlement/Dismissal	23.9%	24.0%	25.2%	24.6%	28.1%	29.5%	26.9%	35.1%
Closure by Clerk	0.4%	0.0%	0.0%	0.4%	0.0%	0.0%	0.0%	0.0%
Others	0.0%	0.0%	0.0%	0.0%	0.0%	0.0%	0.0%	0.0%

Reflecting all documents received by 04/15/2015.

Table 2 (cont.). Number of Cases Resolved and Resolution Category (%)

King County Superior Court

Reporting Category	Q2/13	Q3/13	Q4/13	Q1/14	Q2/14	Q3/14	Q4/14	Q1/15*
Mental Illness: # Resolved	893	1113	1125	859	996	1016	963	922
Court Decision to Commit	70.1%	55.0%	55.2%	66.5%	63.9%	66.5%	63.9%	67.7%
Closed by Court	0.0%	0.0%	0.0%	0.2%	0.0%	0.0%	0.0%	0.0%
Dismissal	21.3%	21.5%	20.5%	21.0%	20.6%	18.7%	22.5%	19.6%
Others	8.6%	23.5%	24.3%	12.3%	15.6%	14.8%	13.6%	12.7%
Juv. Dependency: # Resolved								196
Finding of Dependency								70.9%
Dismissal								27.6%
Others								1.5%
Juv. Terminations: # Resolved								74
Finding of Dependency								94.6%
Dismissal								5.4%
Others								0.0%
Juv. ARY/CHINS/OTHER:# Resolved	69	45	50	68	61	66	66	56
Approve of Petition	60.9%	60.0%	56.0%	64.7%	57.4%	65.1%	63.6%	51.8%
Dismissal	37.7%	37.8%	42.0%	35.3%	42.6%	34.9%	36.4%	46.4%
Others	1.5%	2.2%	2.0%	0.0%	0.0%	0.0%	0.0%	1.8%
Juvenile Truancy: # Resolved	226	296	336	189	109	298	203	270
Approve of Petition	40.3%	0.3%	13.4%	48.7%	72.5%	0.7%	9.9%	45.6%
Dismissal	59.7%	99.7%	86.6%	51.3%	24.8%	99.3%	90.2%	54.4%
Others	0.0%	0.0%	0.0%	0.0%	2.8%	0.0%	0.0%	0.0%
Juvenile Offender: # Resolved	501	491	441	465	413	429	480	456
Resolved by Trial (Fact Finding)	11.2%	6.1%	7.5%	3.9%	7.8%	7.2%	5.4%	6.6%
Resolved by Guilty Plea	36.7%	35.2%	39.5%	41.3%	34.1%	30.8%	33.3%	32.5%
Dismissal	28.5%	41.6%	32.4%	35.5%	43.6%	37.8%	46.5%	44.5%
Deferred Disposition (DDSP)	16.6%	14.3%	16.1%	16.8%	11.1%	19.8%	11.7%	12.9%
Others (including Deferred Prosecution)	7.0%	0.0%	4.5%	2.6%	3.4%	4.4%	3.1%	3.5%
Criminal RALJ: # Resolved	45	46	54	41	48	41	32	45
RALJ Decision	66.7%	58.7%	63.0%	73.2%	72.9%	56.1%	78.1%	71.1%
Dismissal	31.1%	39.1%	33.3%	24.4%	25.0%	36.6%	21.9%	26.7%
Others	2.2%	2.2%	3.7%	2.4%	2.1%	7.3%	0.0%	2.2%
Civil RALJ: # Resolved	22	13	6	15	11	14	17	14
RALJ Decision	50.0%	61.5%	50.0%	40.0%	63.6%	71.4%	41.2%	35.7%
Dismissal	50.0%	38.5%	50.0%	46.7%	27.3%	21.4%	58.8%	50.0%
Others	0.0%	0.0%	0.0%	13.3%	9.1%	7.2%	0.0%	14.3%

* Reflecting all documents received by 04/15/2015.

Chart 2-A. Quarterly Resolutions
Total Judicial Cases Only ("Matters Filed with Clerk" excluded)

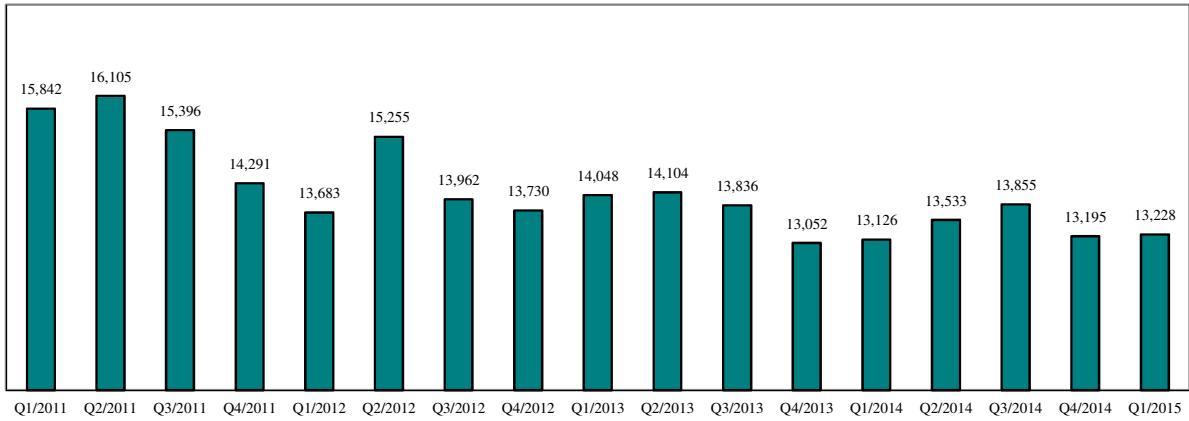
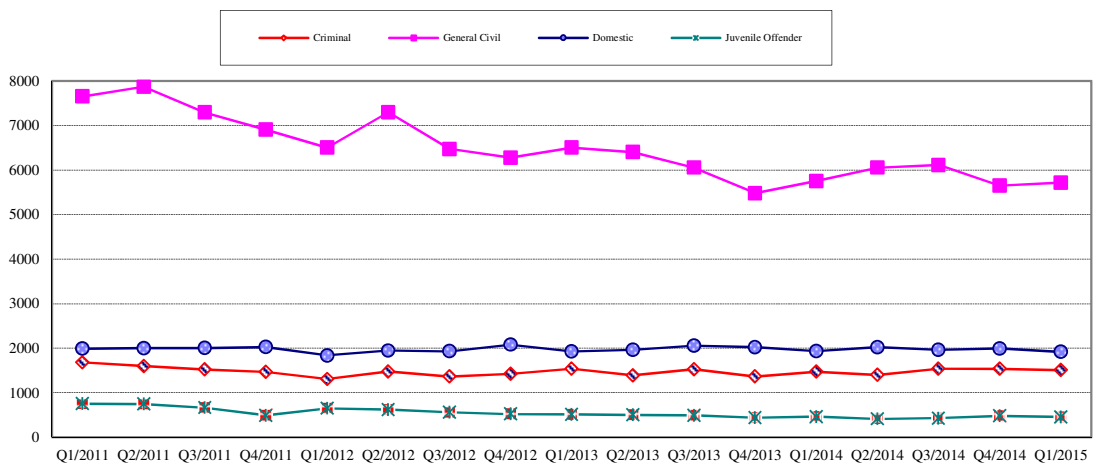


Chart 2-B. Quarterly Resolutions: Criminal, Dmestic, General Civil and Juvenile Offender Cases Only



* Note: "General Civil" is specifically defined in this report. The category of "General Civil" does **not** include the following case types: domestic, probate, guardianship, adoption, paternity, mental illness, juvenile cases (dependency, at-risk youth, child-in-need of service), civil RALJ, and tax filings that don't require judicial resources ("matters filed with clerk"). Please check the Appendix for the cause codes in the "General Civil" category.

Table 3. Age of Resolved Cases
King County Superior Court

Reporting Category	Age of Cases at Resolution							
	Q2/13	Q3/13	Q4/13	Q1/14	Q2/14	Q3/14	Q4/14	Q1/15*
Criminal (excl. RALJ)								
Age (days)								
50% Cases Resolved by Day	110	116	117	118	117	117	118	124
90% Cases Resolved by Day	398	371	359	378	360	345	342	366
Comparison with Court Standard of								
90% in 4 months	54%	52%	51%	51%	51%	51%	51%	49%
98% in 6 months	69%	69%	69%	69%	67%	71%	70%	67%
100% in 9 months	82%	84%	84%	83%	83%	84%	86%	82%
General Civil ⁽¹⁾								
Age (days)								
50% Cases Resolved by Day	27	29	38	42	36	31	35	30
90% Cases Resolved by Day	515	496	484	520	468	435	437	425
Comparison with Court Standard of								
90% in 12 months	83%	83%	83%	81%	84%	85%	84%	84%
98% in 18 months	92%	93%	93%	91%	94%	95%	94%	96%
100% in 24 months	97%	97%	97%	96%	98%	98%	99%	99%
Domestic								
Age (days)								
50% Cases Resolved by Day	164	150	155	175	181	148	164	171
90% Cases Resolved by Day	380	371	379	373	376	363	364	357
Comparison with Court Standard of								
90% in 8 months	66%	67%	66%	62%	64%	68%	67%	66%
98% in 10 months	75%	84%	75%	73%	75%	76%	78%	76%
100% in 14 months	92%	94%	94%	94%	93%	94%	94%	95%
Probate								
Age (days)								
50% Cases Resolved by Day	0	0	0	0	0	0	0	0
90% Cases Resolved by Day	311	7	6	5	21	15	17	7
Comparison with Court Standard of								
90% in 8 months	89%	98%	99%	99%	98%	97%	99%	99%
98% in 18 months	91%	100%	100%	100%	99%	100%	100%	100%
100% in 36 months	94%	100%	100%	100%	100%	100%	100%	100%
Guardianship								
Age (days)								
50% Cases Resolved by Day	59	63	63	66	59	67	68	65
90% Cases Resolved by Day	342	247	172	223	221	322	274	237
Comparison with Court Standard of								
90% in 8 months	87%	90%	91%	93%	91%	89%	88%	89%
98% in 18 months	97%	97%	100%	100%	97%	97%	98%	97%
100% in 36 months	99%	98%	100%	100%	99%	100%	99%	99%
Adoption								
Age (days)								
50% Cases Resolved by Day	108	65	49	45	88	40	56	79
90% Cases Resolved by Day	863	591	215	185	593	943	230	504
Comparison with Court Standard of								
90% in 8 months	74%	74%	92%	92%	74%	86%	90%	81%
98% in 10 months	76%	75%	95%	92%	77%	89%	90%	84%
100% in 14 months	77%	78%	95%	95%	81%	89%	96%	88%
Paternity								
Age (days)								
50% Cases Resolved by Day	180	165	181	190	154	155	145	141
90% Cases Resolved by Day	296	271	300	273	288	292	286	309
Comparison with Court Standard of								
90% in 8 months	79%	63%	74%	76%	84%	83%	82%	78%
98% in 10 months	91%	76%	91%	95%	93%	94%	93%	87%
100% in 14 months	98%	98%	97%	98%	96%	97%	98%	96%

Table 3 (cont.) Age of Resolved Cases
King County Superior Court

Reporting Category	Age of Cases at Resolution							
	Q2/13	Q3/13	Q4/13	Q1/14	Q2/14	Q3/14	Q4/14	Q1/15*
Mental Illness**								
Age (days)								
50% Cases Resolved by Day	3	4	4	3	3	2	3	3
90% Cases Resolved by Day	9	333	287	10	13	10	10	12
Juvenile Dependency (DEP)								
Age (days)								
50% Cases Resolved by Day								111
90% Cases Resolved by Day								312
Comparison with Court Standard of								
90% in 8 months								85%
98% in 10 months								91%
100% in 14 months								98%
Juvenile Termination (TER)								
Age (days)								
50% Cases Resolved by Day								138
90% Cases Resolved by Day								263
Comparison with Court Standard of								
90% in 8 months								83%
98% in 10 months								94%
100% in 14 months								99%
Juv ARY/CHINS/OTHER								
Age (days)								
50% Cases Resolved by Day	41	39	44	48	24	35	34	80
90% Cases Resolved by Day	692	235	112	1058	109	235	184	622
Comparison with Court Standard of								
90% in 8 months	82%	91%	94%	83%	95%	93%	95%	87%
98% in 10 months	85%	91%	94%	86%	99%	100%	99%	89%
100% in 14 months	87%	96%	98%	86%	100%	100%	100%	89%
Juvenile Truancy**								
Age (days)								
50% Cases Resolved by Day	22	25	67	39	30	36	108	128
90% Cases Resolved by Day	60	100	177	150	94	148	214	750
Juvenile Offender								
Age (days)								
50% Cases Resolved by Day	73	78	77	71	78	66	84	98
90% Cases Resolved by Day	243	223	217	195	250	236	241	267
Comparison with Court Standard of								
90% in 4 months	70%	69%	71%	76%	67%	72%	63%	61%
98% in 6 months	81%	84%	83%	88%	78%	84%	80%	78%
100% in 9 months	91%	93%	94%	95%	91%	91%	93%	91%
Criminal RALJ								
Age (days)								
50% Cases Resolved by Day	283	275	286	264	282	228	258	296
90% Cases Resolved by Day	433	447	467	371	482	353	407	725
Civil RALJ								
Age (days)								
50% Cases Resolved by Day	266	165	176	157	175	186	164	180
90% Cases Resolved by Day	373	400	199	246	329	299	352	272

* Reflecting all documents received by 04/15/2015.

** No standard yet.

Table 4. Active Pending Caseload Statistics
King County Superior Court

Reporting Category		Q2/13	Q3/13	Q4/13	Q1/14	Q2/14	Q3/14	Q4/14	Q1/15*
Total (incl. RALJ)									
Previous Pending	(+)	19221	19064	18930	18749	18514	19112	18951	18811
New Filing	(+)	13487	13092	12510	12743	13787	12997	12667	13257
Resolved	(-)	14104	13836	13052	13126	13573	13855	13195	13228
End Pending		19064	18930	18794	18514	19112	18951	18811	18630
Resolution Rate**		1.048	1.057	1.043	1.023	0.982	1.066	1.042	0.998
Criminal (excl. RALJ)									
Previous Pending	(+)	2673	2828	2752	2865	2883	2966	2923	2866
New Filing	(+)	1495	1460	1599	1587	1590	1465	1567	1682
Resolved	(-)	1388	1524	1364	1475	1440	1540	1535	1507
End Pending		2828	2752	2865	2883	2966	2923	2866	2908
Resolution Rate**		0.928	1.044	0.853	0.929	0.881	1.051	0.980	0.896
General Civil									
Previous Pending	(+)	8112	7914	8003	8003	7518	7542	7336	7079
New Filing	(+)	5827	5701	4974	5122	5704	5527	5020	5213
Resolved	(-)	6402	6054	5478	5751	6055	6111	5650	5718
End Pending		7914	8005	7844	7518	7542	7336	7079	7215
Resolution Rate**		1.099	1.062	1.101	1.123	1.062	1.106	1.125	1.097
Asbestos Cases (civil) ⁽¹⁾									
Previous Pending	(+)	81	80	81	92	77	70	71	69
New Filing	(+)	18	10	14	9	7	14	9	9
Resolved	(-)	20	9	4	26	13	14	14	25
End Pending		80	81	92	77	70	71	69	57
Resolution Rate**		1.111	0.900	0.286	2.889	1.857	1.000	1.556	2.778
Domestic									
Previous Pending	(+)	4562	4580	4650	4486	4499	4609	4802	4579
New Filing	(+)	1979	2103	1803	1903	2110	2124	1773	1904
Resolved	(-)	1965	2055	2023	1933	2022	1963	1994	1203
End Pending		4580	4650	4486	4499	4609	4802	4579	4520
Resolution Rate**		0.998	0.977	1.122	1.016	0.958	0.924	1.125	1.006
Probate									
Previous Pending	(+)	696	588	650	768	850	861	902	908
New Filing	(+)	1444	1352	1429	1501	1509	1474	1426	1652
Resolved	(-)	1580	1319	1333	1441	1520	1454	1448	1575
End Pending		588	650	768	850	861	902	908	511
Resolution Rate**		1.094	0.976	0.933	0.960	1.007	0.986	1.015	0.953
Guardianship									
Previous Pending	(+)	279	302	310	303	334	320	316	301
New Filing	(+)	234	237	209	245	241	232	219	221
Resolved	(-)	212	232	218	214	257	237	232	204
End Pending		302	310	303	334	320	316	301	274
Resolution Rate**		0.906	0.979	1.043	0.873	1.066	1.022	1.059	0.923
Adoption									
Previous Pending	(+)	222	200	187	187	200	158	151	149
New Filing	(+)	101	133	134	121	110	103	135	112
Resolved	(-)	123	146	155	87	152	110	139	97
End Pending		200	187	166	200	158	151	149	163
Resolution Rate**		1.218	1.098	1.157	0.719	1.382	1.068	1.030	0.866
Paternity									
Previous Pending	(+)	479	506	500	446	384	338	295	300
New Filing	(+)	273	235	177	197	179	146	180	146
Resolved	(-)	247	242	234	264	231	193	171	154
End Pending		506	500	446	384	338	295	300	282
Resolution Rate**		0.905	1.030	1.322	1.340	1.291	1.322	0.950	1.055

* Reflecting all documents received by 04/15/2015.

** A value of "Resolution Rate" less than one indicates the resolution pace is slower than the filing pace.

Table 4 (cont.) Active Pending Caseload Statistics
King County Superior Court

Reporting Category	Q2/13	Q3/13	Q4/13	Q1/14	Q2/14	Q3/14	Q4/14	Q1/15*
Mental Illness								
Previous Pending (+)	378	390	294	104	119	137	120	121
New Filing (+)	904	1019	935	876	1014	996	965	962
Resolved (-)	893	1113	1125	859	996	1016	963	922
End Pending	390	294	104	119	137	120	121	143
Resolution Rate**	0.988	1.092	1.203	0.981	0.982	1.020	0.998	0.958
Juvenile Dependency (DEP)								
Previous Pending (+)								414
New Filing (+)								171
Resolved (-)								196
End Pending								325
Resolution Rate**								1.146
Juvenile Termination (TER)								
Previous Pending (+)								225
New Filing (+)								43
Resolved (-)								74
End Pending								175
Resolution Rate**								1.721
Juvenile ARY/CHINS/OTHERS								
Previous Pending (+)	101	75	86	94	105	111	114	119
New Filing (+)	37	51	58	76	68	67	69	48
Resolved (-)	69	45	50	68	61	66	66	56
End Pending	75	86	94	105	111	114	119	91
Resolution Rate**	1.865	0.880	0.862	0.895	0.897	0.985	0.957	1.167
Juvenile Truancy								
Previous Pending (+)	382	467	210	326	315	508	477	821
New Filing (+)	361	10	331	390	348	27	468	573
Resolved (-)	226	296	336	189	109	298	203	270
End Pending	467	210	326	315	508	477	821	1153
Resolution Rate**	0.626	29.600	1.015	0.485	0.313	11.037	0.434	1.471
Juvenile Offender								
Previous Pending (+)	588	546	587	612	518	668	716	677
New Filing (+)	452	449	497	363	494	500	441	473
Resolved (-)	501	491	441	465	413	429	480	456
End Pending	546	587	612	518	668	716	677	646
Resolution Rate**	1.108	1.094	0.887	1.281	0.836	0.858	1.088	0.964
Criminal RALJ								
Previous Pending (+)	144	147	147	143	146	133	138	155
New Filing (+)	48	44	48	43	33	46	48	34
Resolved (-)	45	46	54	41	48	41	32	45
End Pending	147	147	143	146	133	138	155	140
Resolution Rate**	0.938	1.045	1.125	0.953	1.455	0.891	0.667	1.324
Civil RALJ								
Previous Pending (+)	32	22	24	38	29	34	30	28
New Filing (+)	12	15	20	8	16	9	14	14
Resolved (-)	22	13	6	15	11	14	17	14
End Pending	22	24	38	29	34	30	28	27
Resolution Rate**	1.833	0.867	0.300	1.875	0.688	1.556	1.214	1.000

* Reflecting all documents received by 04/15/2015.

** A value of "Resolution Rate" less than one indicates the resolution pace is slower than the filing pace.

Chart 4-A. Active Pending Caseload at Quarter End
Total Judicial Cases Only ("Matters Filed with Clerk" excluded)

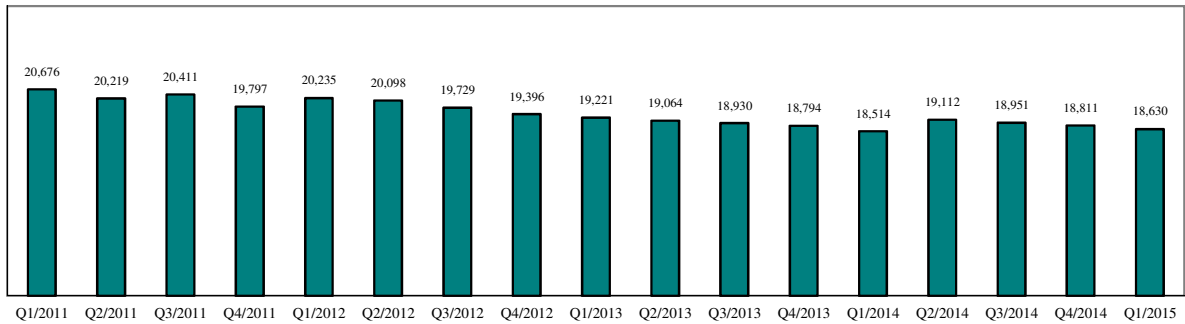


Chart 4-B. Active Pending Caseload at Quarter End: Domestic and General Civil Cases Only

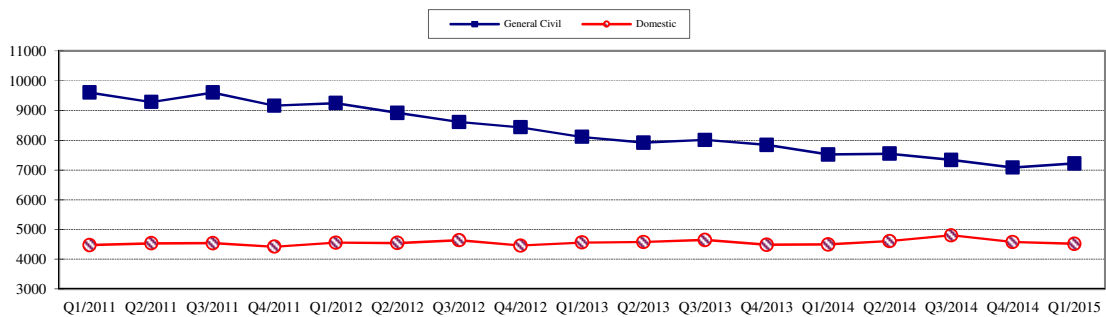
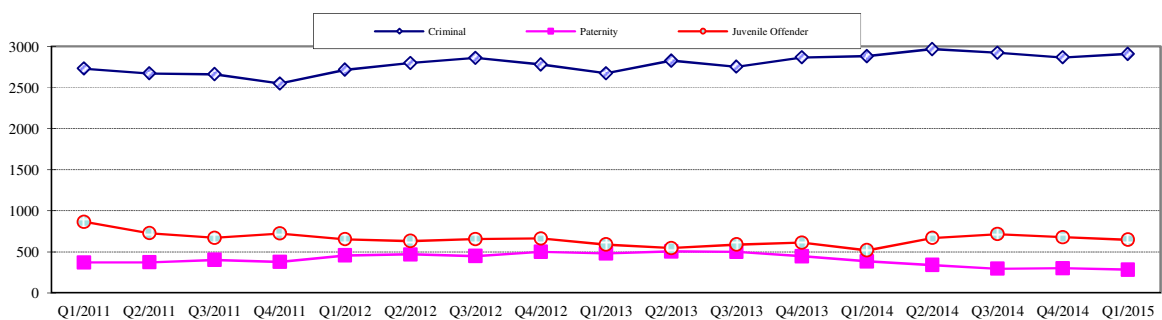


Chart 4-C. Active Pending Caseload at Quarter End:
Criminal, Juvenile Offender, Paternity and Dependency Cases Only



* Note: "General Civil" is specifically defined in this report. The category of "General Civil" does **not** include the following case types: domestic, probate, guardianship, adoption, paternity, mental illness, juvenile cases (dependency, at-risk youth, child-in-need of service), civil RALJ, and tax filings that don't require judicial resources ("matters filed with clerk"). Please check the Appendix for the cause codes in the "General Civil" category.

Table 5. Age of Pending Cases
King County Superior Court

Reporting Category	Age of Pending Cases and # of Cases in Each Age Interval							
	Q2/13	Q3/13	Q4/13	Q1/14	Q2/14	Q3/14	Q4/14	Q1/15*
Criminal (excl. RALJ): # of Cases	2828	2752	2865	2883	2966	2923	2866	2908
Age (days)								
Median (50 percentile)	111	117	111	110	106	120	119	96
95 percentile	703	745	771	750	754	785	794	525
# of Cases in Age Interval								
0 - 60 days (0 - 2 months)	889	861	867	966	896	854	835	1072
61 - 120 days (3 - 4 months)	599	568	650	581	743	616	612	627
121 - 180 days (5 - 6 months)	382	373	366	378	380	435	383	362
181 - 270 days (7 - 9 months)	296	346	333	328	326	377	337	308
> 270 days (> 9 months)	662	604	649	630	621	641	699	539
General Civil: # of Cases	7914	8005	7844	7518	7542	7336	7079	7215
Age (days)								
Median (50 percentile)	168	165	174	172	144	153	157	160
95 percentile	633	634	658	594	566	577	577	547
# of Cases in Age Interval								
0 - 120 days (0 - 4 months)	3212	3230	3018	2984	3380	3142	2889	2959
121 - 240 days (5 - 8 months)	1606	1829	1796	1965	1586	1793	1784	1793
241 - 360 days (9 - 12 months)	1216	1151	1250	1239	1176	1035	1209	1299
361 - 540 days (13 - 18 months)	1235	1138	1083	1089	941	923	760	789
541 - 720 days (19 - 24 months)	373	357	378	305	290	258	237	231
> 720 days (> 24 months)	272	300	319	206	169	185	200	144
Asbestos Cases (civil)⁽¹⁾ : # of Cases	80	81	92	77	70	71	69	57
Age (days)								
Median (50 percentile)	280	264	296	351	372	371	374	253
95 percentile	3342	2441	2533	778	851	897	916	1002
# of Cases in Age Interval								
0 - 120 days (0 - 4 months)	26	17	18	10	12	13	10	13
121 - 240 days (5 - 8 months)	10	21	13	15	10	11	14	11
241 - 360 days (9 - 12 months)	12	9	23	14	11	9	9	10
361 - 540 days (13 - 18 months)	11	13	14	25	22	14	14	10
541 - 720 days (19 - 24 months)	2	5	8	7	8	17	15	5
> 720 days (> 24 months)	19	16	16	6	7	7	7	8
Domestic: # of Cases	4580	4650	4486	4499	4609	4802	4579	4520
Age (days)								
Median (50 percentile)	116	112	127	130	109	112	129	126
95 percentile	508	517	527	557	548	548	593	538
# of Cases in Age Interval								
0 - 120 days (0 - 4 months)	2361	2443	2181	2182	2486	2555	2168	2229
121 - 240 days (5 - 8 months)	1128	1207	1214	1241	1065	1221	1388	1206
241 - 360 days (9 - 12 months)	688	568	644	595	601	533	561	661
361 - 540 days (13 - 18 months)	198	215	229	248	223	246	197	200
> 540 days (> 18 months)	205	217	218	233	234	247	265	224
Probate: # of Cases	588	650	768	850	861	905	908	511
Age (days)								
Median (50 percentile)	403	415	382	418	494	538	630	680
95 percentile	1970	2021	2063	2085	2164	2241	2333	869
# of Cases in Age Interval								
0 - 120 days (0 - 4 months)	133	142	192	173	153	140	116	172
121 - 240 days (5 - 8 months)	92	84	93	134	95	115	83	89
241 - 360 days (9 - 12 months)	52	74	83	82	104	66	82	72
361 - 540 days (13 - 18 months)	70	81	89	112	113	134	120	69
> 540 days (> 18 months)	241	269	311	349	396	450	497	109

Reflecting all documents received by 04/15/2015.

Table 5 (cont.). Age of Pending Cases

King County Superior Court

Reporting Category	Age of Pending Cases and # of Cases in Each Age Interval							
	Q2/13	Q3/13	Q4/13	Q1/14	Q2/14	Q3/14	Q4/14	Q1/15*
Guardianship: # of Cases	302	310	303	334	320	316	301	274
Age (days)								
Median (50 percentile)	65	76	103	83	91	100	86	64
95 percentile	474	489	575	580	657	744	798	544
# of Cases in Age Interval								
0 - 120 days (0 - 4 months)	199	190	166	198	181	172	166	175
121 - 240 days (5 - 8 months)	41	50	52	43	45	44	37	42
241 - 360 days (9 - 12 months)	30	37	35	30	25	32	28	24
361 - 540 days (13 - 18 months)	18	21	31	43	37	31	21	18
> 540 days (> 18 months)	14	12	19	20	32	37	49	15
Adoption: # of Cases	200	187	166	200	158	151	149	163
Age (days)								
Median (50 percentile)	151	137	155	159	120	127	120	110
95 percentile	1467	1383	1629	1526	1562	832	924	848
# of Cases in Age Interval								
0 - 120 days (0 - 4 months)	90	89	72	86	81	71	75	86
121 - 240 days (5 - 8 months)	23	36	23	38	25	35	25	31
241 - 360 days (9 - 12 months)	19	14	20	14	19	14	19	14
361 - 540 days (13 - 18 months)	28	19	19	24	9	14	13	16
> 540 days (> 18 months)	40	29	32	38	24	17	17	16
Paternity: # of Cases	506	500	446	384	338	295	300	282
Age (days)								
Median (50 percentile)	87	106	119	91	96	100	86	105
95 percentile	279	305	279	320	327	334	320	285
# of Cases in Age Interval								
0 - 120 days (0 - 4 months)	327	309	230	237	210	173	183	171
121 - 240 days (5 - 8 months)	135	147	179	112	92	88	77	85
241 - 360 days (9 - 12 months)	35	30	24	22	23	23	28	17
361 - 540 days (13 - 18 months)	7	12	11	9	10	5	7	7
> 540 days (> 18 months)	2	2	2	4	3	6	5	2
Mental Illness: # of Cases	390	294	104	119	137	120	121	143
Age (days)								
Median (50 percentile)	256	259	197	70	50	113	150	33
95 percentile	1680	1877	2196	546	629	725	813	805
# of Cases in Age Interval								
0 - 120 days (0 - 4 months)	79	94	47	66	79	61	59	92
121 - 240 days (5 - 8 months)	95	37	12	10	13	11	9	9
> 240 days (> 8 months)	216	163	45	43	38	48	53	42
Juv Dependency (DEP): # of Cases								325
Age (days)								
Median (50 percentile)								99
95 percentile								386
# of Cases in Age Interval								
0 - 60 days (0 - 2 months)								119
61 - 120 days (3 - 4 months)								78
121 - 180 days (5 - 6 months)								53
181 - 270 days (7 - 9 months)								25
> 270 days (> 9 months)								50
Juv Termination (TER): # of Cases								175
Age (days)								
Median (50 percentile)								132
95 percentile								404
# of Cases in Age Interval								
0 - 60 days (0 - 2 months)								20
61 - 120 days (3 - 4 months)								48
121 - 180 days (5 - 6 months)								53
181 - 270 days (7 - 9 months)								31
> 270 days (> 9 months)								23

* Reflecting all documents received by 04/15/2015.

Table 5 (cont.). Age of Pending Cases
King County Superior Court

Reporting Category	Age of Pending Cases and # of Cases in Each Age Interval							
	Q2/13	Q3/13	Q4/13	Q1/14	Q2/14	Q3/14	Q4/14	Q1/15*
Juv. ARY/CHINS/OTHER: # of Cases	75	86	94	105	111	114	119	91
Age (days)								
Median (50 percentile)	577	413	376	162	222	238	248	170
95 percentile	2678	2717	2809	2850	2941	3033	3125	3264
# of Cases in Age Interval								
0 - 60 days (0 - 2 months)	13	19	26	29	32	35	24	28
61 - 120 days (3 - 4 months)	5	12	9	15	8	10	20	7
121 - 180 days (5 - 6 months)	4	1	4	11	12	8	9	11
181 - 270 days (7 - 9 months)	5	4	3	5	11	8	8	6
> 270 days (> 9 months)	48	50	52	45	48	53	58	39
Juvenile Truancy: # of Cases	467	210	326	315	508	477	821	1153
Age (days)								
Median (50 percentile)	68	494	167	154	75	159	76	93
95 percentile	620	971	948	1041	837	940	995	1064
# of Cases in Age Interval								
0 - 60 days (0 - 2 months)	182	11	139	105	190	25	321	447
61 - 120 days (3 - 4 months)	126	6	21	41	112	83	149	255
121 - 180 days (5 - 6 months)	21	28	3	17	24	176	1	216
181 - 270 days (7 - 9 months)	23	32	20	4	32	24	168	13
> 270 days (> 9 months)	115	133	143	148	150	169	182	222
Juvenile Offender: # of Cases	546	587	612	518	668	716	677	646
Age (days)								
Median (50 percentile)	76	81	74	97	75	92	90	76
95 percentile	508	545	517	581	620	545	627	418
# of Cases in Age Interval								
0 - 60 days (0 - 2 months)	219	231	267	180	281	232	253	268
61 - 120 days (3 - 4 months)	145	151	133	121	167	201	139	169
121 - 180 days (5 - 6 months)	51	67	79	63	70	103	90	73
181 - 270 days (7 - 9 months)	55	47	45	59	46	75	85	51
> 270 days (> 9 months)	76	91	88	95	104	105	110	85
Criminal RALJ: # of Cases	147	147	143	146	133	138	155	140
Age (days)								
Median (50 percentile)	157	144	141	147	169	154	146	158
95 percentile	392	384	391	400	410	499	591	451
# of Cases in Age Interval								
0 - 60 days (0 - 2 months)	34	34	34	31	23	31	33	31
61 - 120 days (3 - 4 months)	27	24	24	33	22	24	28	20
121 - 180 days (5 - 6 months)	24	30	28	23	29	20	30	29
181 - 270 days (7 - 9 months)	33	28	32	31	32	29	28	31
> 270 days (> 9 months)	29	31	25	28	27	34	36	29
Civil RALJ: # of Cases	22	24	38	29	34	30	28	27
Age (days)								
Median (50 percentile)	88	58	84	111	114	117	103	105
95 percentile	375	231	323	334	335	427	388	279
# of Cases in Age Interval								
0 - 60 days (0 - 2 months)	5	12	12	7	12	4	7	7
61 - 120 days (3 - 4 months)	9	5	14	10	9	11	9	8
121 - 180 days (5 - 6 months)	3	5	8	7	3	8	5	8
181 - 270 days (7 - 9 months)	2	1	2	2	8	3	5	2
> 270 days (> 9 months)	3	1	2	3	2	4	2	2

* Reflecting all documents received by 04/15/2015.

Table 6. Seattle vs. Regional Justice Center (KNT): Filing, Resolution, Pending Caseload (%)

King County Superior Court

	Q1/14		Q2/14		Q3/14		Q4/14		Q1/15	
	SEA	KNT	SEA	KNT	SEA	KNT	SEA	KNT	SEA	KNT
Filings Total <i>(excl. filings with clerk)</i>	63%	37%	64%	36%	65%	35%	63%	37%	64%	36%
Criminal (excl. RALJ)	52%	48%	51%	49%	55%	45%	52%	48%	52%	48%
General Civil (excl. RALJ)	57%	43%	57%	43%	56%	44%	55%	45%	57%	43%
Domestic	64%	36%	63%	37%	62%	38%	60%	40%	58%	42%
Probate	74%	26%	77%	23%	78%	22%	77%	23%	78%	22%
Guardianship	63%	37%	64%	36%	57%	43%	62%	38%	66%	34%
Adoption	83%	17%	81%	19%	69%	31%	76%	24%	78%	22%
Paternity	49%	51%	46%	54%	41%	59%	53%	47%	61%	39%
Mental Illness	100%	---	100%	---	100%	---	100%	---	100%	---
Juv. Dependency (DEP)									41%	59%
Juv. Termination (TER)									63%	37%
Juvenile ARY/CHINS/Other	46%	54%	60%	40%	45%	55%	42%	58%	31%	69%
Juvenile Truancy	48%	52%	56%	44%	85%	15%	53%	47%	46%	54%
Juvenile Offender	100%	---	100%	---	100%	---	100%	---	100%	---
Criminal RALJ	91%	9%	94%	6%	96%	4%	92%	8%	97%	3%
Civil RALJ	100%	---	88%	12%	100%	---	79%	21%	86%	14%
Resolution Total <i>(excl. filings with clerk)</i>	65%	35%	64%	36%	63%	37%	64%	36%	64%	36%
Criminal (excl. RALJ)	58%	42%	55%	45%	53%	47%	56%	44%	51%	49%
General Civil (excl. RALJ)	60%	40%	56%	44%	55%	45%	56%	44%	57%	43%
Domestic	63%	37%	62%	38%	65%	35%	61%	39%	63%	37%
Probate	73%	27%	77%	23%	78%	22%	77%	23%	78%	22%
Guardianship	68%	32%	61%	39%	65%	35%	59%	41%	60%	40%
Adoption	83%	17%	77%	23%	81%	19%	76%	24%	73%	27%
Paternity	45%	55%	46%	54%	47%	53%	40%	60%	48%	52%
Mental Illness	100%	---	100%	---	100%	---	100%	---	100%	---
Juv. Dependency (DEP)									55%	45%
Juv. Termination (TER)									66%	34%
Juvenile ARY/CHINS/Other	53%	47%	51%	49%	44%	56%	58%	42%	39%	61%
Juvenile Truancy	47%	53%	42%	58%	32%	68%	47%	53%	63%	37%
Juvenile Offender	100%	---	100%	---	100%	---	100%	---	100%	---
Criminal RALJ	93%	7%	94%	6%	88%	12%	94%	6%	89%	11%
Civil RALJ	87%	13%	91%	9%	100%	---	88%	12%	86%	14%
Pending Total <i>(excl. filings with clerk)</i>	65%	35%	65%	35%	65%	35%	65%	35%	63%	37%
Criminal (excl. RALJ)	51%	49%	50%	50%	50%	50%	49%	51%	51%	49%
General Civil (excl. RALJ)	67%	33%	67%	33%	68%	32%	68%	32%	67%	33%
Domestic	62%	38%	63%	37%	62%	38%	62%	32%	59%	41%
Probate	84%	16%	82%	18%	83%	17%	82%	18%	80%	20%
Guardianship	63%	37%	65%	35%	59%	41%	62%	38%	64%	36%
Adoption	80%	20%	84%	16%	76%	24%	74%	26%	76%	24%
Paternity	53%	47%	54%	46%	52%	48%	59%	41%	65%	35%
Mental Illness	100%	---	100%	---	100%	---	100%	---	100%	---
Juv. Dependency (DEP)									43%	57%
Juv. Termination (TER)									63%	37%
Juvenile ARY/CHINS/Other	66%	34%	73%	27%	73%	27%	64%	36%	60%	40%
Juvenile Truancy	62%	38%	59%	41%	65%	35%	59%	41%	51%	49%
Juvenile Offender	100%	---	100%	---	100%	---	100%	---	100%	---
Criminal RALJ	90%	10%	90%	10%	93%	7%	92%	8%	94%	6%
Civil RALJ	97%	3%	94%	6%	93%	7%	89%	11%	89%	11%

Reflecting all documents received by 04/15/2015.

Table 7. Quarterly Utilization of Pro Tem Judges/Commissioners ⁽¹⁾

Category	Q3/12	Q4/12	Q1/13	Q2/13	Q3/13	Q4/13	Q1/14	Q2/14	Q3/14	Q4/14	Q1/15
Grand Total	1304	864	814	1182	1391	2546	1450	1610	1510	1510	779
Judge FTE Equivalent ⁽³⁾	2.9	1.9	1.8	2.6	3.1	5.7	3.2	3.6	3.4	3.4	1.7
By Work Type											
Pro Tem Judge								412	332	459	55
Pro Tem Commissioner								1028	1178	1051	724
Unspecified								170	0	0	0
By Location											
KCCH								532	655	916	317
MRJC								505	377	273	193
Juvenile								282	283	276	237
ITA								158	195	46	33
Other								133	0	0	17
By Calendar Type											
Criminal								128	75	262	40
Civil								74	32	22	0
Ex Parte								536	333	170	102
Family Law/Domestic								309	506	715	385
Dependency								217	119	133	183
Juvenile Offender								103	144	119	54
BECCA								30	20	13	0
ITA								158	195	46	33
Juvenile Drug Court								9	0	0	0
Family Treatment Court								6	0	0	0
Plea Calendar								42	71	8	0
Status/Non-Compliance								0	6	13	0
Other or Unspecified								0	10	13	0
By Reason											
Vacation Backfill								565	572	674	396
Medical Backfill								112	208	292	147
Duty Time								210	249	219	211
Conference Coverage								259	229	4	0
Congestion								168	80	259	8
Vacancy Coverage								263	109	0	0
Other								34	64	63	35

(1) This table is based on the time sheet for compensation

(2) Judge FTE Equivalent = # of hours / [7.5 hours/day * 20 days/month * 3 months] = # of hours/450.

The statistics on Pro Tem judge/commissioner use provide information on the external help the court has obtained in order to handle the workload. The data are collected on the time sheet for compensation (therefore it does not include unpaid volunteering or visiting judges/commissioners). The database on Pro Tem judges/commissioners is managed by the Administrative Services Department (ASD) of King County Superior Court. The Pro Tem total hours presented in this section are provided quarterly by ASD.

Table 8. Family Law Activity

SEATTLE	3RD QTR, 2013		4TH QTR, 2013		1ST QTR, 2014		2ND QTR, 2014		3RD QTR, 2014		4T QTR, 2014		1ST QTR, 2015	
	HRGS	ORDS	HRGS	ORDS	HRGS	ORDS	HRGS	ORDS	HRGS	ORDS	HRGS	ORDS	HRGS	ORDS
FAM.LAW	481	2227	458	2043	409	1984	463	2076	490	2127	490	2248	381	1881
DAILY AVG.	8	37	8	33	7	33	8	34	8	35	8	37	6	31
PATERNITY	42	1506	49	1207	97	1437	78	1309	61	1133	53	1270	47	1112
DAILY AVG.	1	25	1	20	2	24	1	21	1	19	1	21	1	18
DOM. VIOL.	250	534	211	439	252	512	229	476	267	563	234	484	228	545
DAILY AVG.	4	9	3	7	4	8	4	8	4	9	4	8	4	9
KENT														
KENT	3RD QTR, 2013		4TH QTR, 2013		1ST QTR, 2014		2ND QTR, 2014		3RD QTR, 2014		4T QTR, 2014		1ST QTR, 2015	
	HRGS	HRGS	HRGS	ORDS	HRGS	ORDS	HRGS	ORDS	HRGS	ORDS	HRGS	ORDS	HRGS	ORDS
FAM.LAW	436	1793	449	1733	382	1685	458	1629	473	1569	380	1637	285	1414
DAILY AVG.	7	29	7	28	6	28	8	27	8	26	6	27	5	23
PATERNITY	82	1227	62	1088	61	1196	51	1008	58	910	60	960	37	730
DAILY AVG.	1	20	1	18	1	20	1	17	1	15	1	16	1	12
DOM. VIOL.	429	546	363	532	332	501	444	567	496	620	432	562	439	666
DAILY AVG.	7	9	6	9	5	8	7	9	8	10	7	9	7	11
GRAND TOTAL														
GRAND TOTAL	3RD QTR, 2013		4TH QTR, 2013		1ST QTR, 2014		2ND QTR, 2014		3RD QTR, 2014		4T QTR, 2014		1ST QTR, 2015	
	HRGS	ORDS	HRGS	ORDS	HRGS	ORDS	HRGS	ORDS	HRGS	ORDS	HRGS	ORDS	HRGS	ORDS
TOTAL	1720	7833	1592	7042	1533	7315	1723	7065	1845	6922	1649	7161	1417	6348
OVERALL DAILY AVG.	28	128	26	115	25	120	28	116	30	113	27	117	23	104

The statistics on family law and Ex Parte activity are obtained directly from SCOMIS using the appropriate docket codes.

Table 9. Ex Parte Activity

SEATTLE	1ST QTR, 2014		2ND QTR, 2014		3RD QTR, 2014		4TH QTR, 2014		1ST QTR, 2015	
	HRGS	ORDS	HRGS	ORDS	HRGS	ORDS	HRGS	ORDS	HRGS	ORDS
ADOP/PAT	62	216	91	311	68	229	97	303	52	208
DOM. VIOL.	9	373	10	399	8	374	3	350	1	360
OTH. CIVIL	247	531	346	528	315	481	256	457	281	528
DOMESTIC	532	1761	566	1994	544	1791	585	1869	495	1798
PROB/GDN	1220	2257	1342	2332	1268	2171	1283	2208	1330	2328
SUBTOTAL	2070	5138	2355	5564	2203	5046	2224	5187	2159	5222
DAILY AVG.	34	84	39	91	36	83	36	85	35	86

SEATTLE VIA CLERK (starting Jan 2009)	1ST QTR, 2014		2ND QTR, 2014		3RD QTR, 2014		4TH QTR, 2014		1ST QTR, 2015	
	----	ORDS	----	ORDS	----	ORDS	----	ORDS	----	ORDS
ADOP/PAT	----	108	----	115	----	96	----	110	----	93
DOM. VIOL.	----	1	----	3	----	5	----	1	----	5
OTH. CIVIL	----	4871	----	4852	----	4844	----	4418	----	4436
DOMESTIC	----	1325	----	1442	----	1429	----	1431	----	1412
PROB/GDN	----	749	----	819	----	793	----	799	----	849
SUBTOTAL	----	7054	----	7231	----	7167	----	6759	----	6795
DAILY AVG.	----	116	----	119	----	117	----	111	----	111

SEATTLE MAIL-IN	1ST QTR, 2014		2ND QTR, 2014		3RD QTR, 2014		4TH QTR, 2014		1ST QTR, 2015	
	----	ORDS	----	ORDS	----	ORDS	----	ORDS	----	ORDS
ADOP/PAT	----	2	----	3	----	3	----	0	----	0
DOM. VIOL.	----	0	----	0	----	1	----	1	----	0
OTH. CIVIL	----	159	----	100	----	117	----	186	----	95
DOMESTIC	----	35	----	30	----	29	----	32	----	43
PROB/GDN	----	79	----	92	----	66	----	58	----	77
SUBTOTAL	----	275	----	225	----	216	----	277	----	215
DAILY AVG.	----	5	----	4	----	4	----	5	----	4

Note: Ex Parte via Clerk started in January 2009.

Table 9 (cont). Ex Parte Activity

KENT	1ST QTR, 2014		2ND QTR, 2014		3RD QTR, 2014		4TH QTR, 2014		1ST QTR, 2015	
	HRGS	ORDS	HRGS	ORDS	HRGS	ORDS	HRGS	ORDS	HRGS	ORDS
ADOP/PAT	21	82	24	102	23	92	30	107	26	84
DOM. VIOL.	2	444	1	479	3	531	0	437	5	528
OTH. CIVIL	300	466	324	521	332	543	315	493	280	412
DOMESTIC	330	1281	319	1282	313	1381	382	1392	321	1370
PROB/GDN	444	912	486	900	373	759	397	737	413	791
SUBTOTAL	1097	3185	1154	3284	1044	3306	1124	3166	1045	3185
DAILY AVG.	18	52	19	54	17	54	18	52	17	52

KENT VIA CLERK (starting Jan 2009)	1ST QTR, 2014		2ND QTR, 2014		3RD QTR, 2014		4TH QTR, 2014		1ST QTR, 2015	
	HRGS	ORDS	HRGS	ORDS	HRGS	ORDS	HRGS	ORDS	HRGS	ORDS
ADOP/PAT	----	40	----	46	----	39	----	40	----	25
DOM. VIOL.	----	2	----	1	----	2	----	0	----	3
OTH. CIVIL	----	2813	----	2665	----	2861	----	2466	----	2556
DOMESTIC	----	460	----	491	----	525	----	567	----	474
PROB/GDN	----	293	----	277	----	306	----	289	----	332
SUBTOTAL	----	3608	----	3480	----	3733	----	3362	----	3390
DAILY AVG.	----	59	----	57	----	61	----	55	----	56

KENT MAIL-IN	1ST QTR, 2014		2ND QTR, 2014		3RD QTR, 2014		4TH QTR, 2014		1ST QTR, 2015	
	HRGS	ORDS	HRGS	ORDS	HRGS	ORDS	HRGS	ORDS	HRGS	ORDS
ADOP/PAT	----	0	----	2	----	1	----	1	----	1
DOM. VIOL.	----	0	----	0	----	0	----	0	----	0
OTH. CIVIL	----	25	----	34	----	46	----	37	----	34
DOMESTIC	----	14	----	11	----	21	----	8	----	18
PROB/GDN	----	22	----	19	----	31	----	29	----	28
SUBTOTAL	----	61	----	66	----	99	----	75	----	81
DAILY AVG.	----	1	----	1	----	2	----	1	----	1

ALL SEATTLE AND KENT	1ST QTR, 2014		2ND QTR, 2014		3RD QTR, 2014		4TH QTR, 2014		1ST QTR, 2015	
	HRGS	ORDS	HRGS	ORDS	HRGS	ORDS	HRGS	ORDS	HRGS	ORDS
GRAND TOTAL	3167	19322	3509	19851	3247	19568	3348	18827	3204	18889
DAILY AVERAGE	51.9	316.8	57.5	325.4	53.2	320.8	54.9	308.6	52.5	309.7

Note: Ex Parte via Clerk started in January 2009.

Appendix Glossary and Definition

General Definition

Active Status

A case is active if it is not on suspense status (see Suspense Status).

Case

A case is defined as a filing with an assigned case number (or a case number plus a defendant connection code in pre-1990 criminal filings).

Completion

A case is completed when dispositive document is filed with the court following resolution.

Jury Trial

A hearing is reported as a jury trial if the jury is impaneled.

New Case

A new case is an original filing with new case number assigned.

Non-Jury Trial

A hearing is reported as a non-jury trial if an opening statement is made, waived, or reserved. A juvenile fact finding hearings is reported as a non-jury trial.

Pending Case

A case is defined as pending if it is unresolved and active (not in suspense).

Reactivated Case

A case returns to active status from suspense status during the reporting period.

Re-opened Cases

A case is re-opened if it has been previously completed but returns to the court for supplement or change of the original case resolution. A re-opened case does not have a new case number. Only resolved cases can be "re-opened". (Note: measurement not available as of July 1996. SCOMIS capacity may exist after conversion to DB2 in the future).

Resolution

A case is resolved if all issues in the complaint are fully adjudicated.

Suspended Case

A case is placed in suspense status from active status during the reporting period.

Suspense Status

A case is on suspense status if it is on warrant, appeal, stay, mediation, arbitration ("Deferred Prosecution" is not a suspense status, but is treated as a resolution).

Trial

A hearing set before a judge or jury in which all the issues in the case are meant to be resolved. A trial normally includes opening statements to the court or jury stating what the evidence will show, introduction of witnesses and exhibits for direct and cross examination, final arguments to the court or jury in which counsel argue both the evidence and the law, and judgment by the court or jury stating what the facts of the case are and what law applies to the facts. In a jury case, it also includes the selection of the jury. A trial can be held

for one or more cases. A single trial may be held to adjudicate more than one case (as defined above).

Post-resolution Modifications

In this report, we also report the post-resolution modifications for case type 3 (domestic) and 5 (paternity). These numbers are based on the tracks (DMOD and DTBA) opened after the original resolution date (i.e., if the track beginning date is after the resolution date).

Section I. Filing Activity

Additional Filings with Clerk

Filings with clerk without assigning a SCOMIS case number. This reporting category consists of search warrants, wire taps, extradition, oaths and orders pertaining to Pro Tem judge/commissioners/Court

Reporters/Bailiffs, and other "non-case" filings as recorded under 12050 system.

Annual Filings

Total number of new case filings during the calendar year (January 1 to December 31).

Adoption Cases

This reporting category includes the following "cause-of-action" codes within SCOMIS case type 5:

- Relinquishment (REL)
- Termination of Parent/Child Relationship (TER)
- Adoption (ADP)
- Miscellaneous (MSC)
- Name Change - Confidential (CHN)
- Initial Pre-Placement Report Filed with Clerk (PPR)

General Civil Cases

"General Civil" cases include all civil matters other than Domestic, Probate, Guardianship, Adoption, Paternity and appeals from courts of limited jurisdiction and "Matters Filed with Clerk". "General civil" cases include small claims as identified by the "Small Claim Track". This reporting category includes the following "cause-of-action" codes within SCOMIS case type 2:

- Administrative Law Review (ALR)
- Change of Name - Non-Confidential (CHN)
- Collection (COL)
- Commercial (COM)
- Condemnation (CON)
- Domestic Violence Protection (DVP)
- Emancipation of Minor (EOM)
- Foreclosure (FOR)
- Civil Harassment (HAR)
- Injunction (INJ)
- Other Malpractice (MAL)
- Medical Malpractice (MED)
- Meretricious Relationship (MER)
- Malicious Harassment (MHA)
- Miscellaneous (MSC)
- Minor Settlement (MST) - as of 10/1/96, under Guardianship
- Petition of Civil Commitment- Sexual Predator (PCC)
- Property Fairness (PFA)

- Personal Injury (PIN)
- Property Damage (PRP)
- Quiet Title (QTI)
- Small Claims (LCA/LCI on “Small Claim Track”)
- Seizure of Property from the Commission of a Crime (SPC)
- Seizure of Property Resulting from a Crime (SPR)
- Tort Motor Vehicle (TMV)
- Tort Other (TTO)
- Unlawful Detainer (UND)
- Wrongful Death (WDE)
- Writ of Habeas Corpus (WHC)
- Miscellaneous Writ (WMW)
- Writ of Mandamus (WRM)
- Writ of Restitution (WRR)
- Writ of Review (WRV)

Civil RALJ Cases

Civil appeals from courts of limited jurisdiction (excluding small claims as identified by the “Small Claim Track”). Civil RALJ includes the following “cause-of-action” reporting categories:

- Lower Court Appeal - Civil and “Not a Small Claim”
- Lower Court Appeal - Infraction and “Not a Small Claim”

Note: The Civil RALJ cases are determined based on both SCOMIS “cause-of-action” code (LCA and LCI) within SCOMIS case type 2 and the “Small Claim Track”.

Criminal Cases (excl. RALJ)

Adult criminal cases, excluding appeals from courts of limited jurisdiction. This reporting category includes the following crime categories within SCOMIS case type 1:

- Homicide
- Sex Crime
- Robbery
- Assault
- Theft/Burglary
- Motor Vehicle Theft
- Controlled Substance
- Other Felony
- Others (Misdemeanor, Non-charge Case)

Criminal RALJ Cases

Criminal appeals from courts of limited jurisdiction. This reporting category includes all SCOMIS case type 1 cases that have an appeal from lower court field of “Yes”.

Domestic Cases

This reporting category includes the following “cause-of-action” codes within SCOMIS case type 3:

- Annulment – Invalidity (INV)
- Child Custody (CUS)
- Dissolution With Children Of The Marriage (DIC)
- Dissolution With No Children Of The Marriage (DIN)
- Dissolution of Domestic Partnership – With Children (DPC)
- Dissolution of Domestic Partnership – With No Children (DPN)
- Foreign Judgment (FJU)
- Invalidity – Domestic Partnership (INP)
- Mandatory Wage Assignment (MWA)
- Miscellaneous (MSC)
- Modification (MOD)
- Modification – Support Only (MDS)
- Out-Of-State Child Custody (OSC)
- Parenting Plan / Child Support (PPS)
- Reciprocal, Respondent In-County (RIC)
- Reciprocal, Respondent Out-of-County (ROC)
- Legal Separation (SEP)
- Legal Separation – Domestic Partnership (SPD)

Guardianship Cases

This reporting category includes the following “cause-of-action” codes within SCOMIS case type 4:

- Guardianship/Estate (G/E)
- Guardianship (GND)
- Limited Guardianship (LGD)
- Minor Settlement (MST)

Juvenile ARY/CHINS Cases

Juvenile dependency cases, excluding truancy cases and DEP cause code. This reporting category includes following “cause-of-action” codes within SCOMIS case type 7:

- Alternative Residential Placement (ARP)
- At-Risk Youth (ARY)
- Child in Need of Service (CNS)

Juvenile Dependency Cases

This reporting category includes following “cause-of-action” codes within SCOMIS case type 7:

- Dependency (DEP)
- Termination (TER)
- Developmental Disability (DDP)
- Guardianship Foster Children (GFC)
- Reinstatement of Parental Rights (RPR)
- Extension of Foster Care (EFC)
- Relative Visitation (RVS)

Juvenile Offender Cases

This reporting category includes the following crime categories in SCOMIS case type 8:

- Homicide
- Sex Crime
- Robbery
- Assault
- Theft/Burglary
- Motor Vehicle Theft
- Controlled Substance
- Other Felony
- Others (Misdemeanor, Non-charge Case)

Juvenile Truancy Cases

Mandatory truancy filings started on 10/01/1995. This reporting category includes the following “cause-of-action” code within SCOMIS case type 7:

- Truancy (TRU)

Matters Filed with Clerk

Filings with clerk (case numbers assigned), but requiring little or no judicial action. This reporting category includes the following “cause-of-action” codes within SCOMIS case type 2:

- Abstract of Judgment (ABJ)
- Foreign Judgment (FJU)
- Tax Warrant (TAX)
- Transcripts of Judgment (TRJ)

Mental Illness Cases

This reporting category includes all “cause-of-action” codes within SCOMIS case type 6:

- Alcoholic Treatment (ALT)
- Mental Illness - Adult (MI)
- Mental Illness - Juvenile (MIJ)

Paternity Cases

This reporting category includes the following “cause-of-action” codes within SCOMIS case type 5:

- Modification (MOD)
- Paternity (PAT)
- Paternity/URES/UFSA (PUR)

Probate Cases

This reporting category includes the following “cause-of-action” codes within SCOMIS case type 4:

- Absentee (ABS)
- Disclaimer (DSC)
- Estate (EST)
- Foreign Will (FNW)
- Miscellaneous (MSC)
- Non-Probate Notice to Creditors (NNC)
- Will Only (WLL)

Total Cases

New cases with case numbers assigned, excluding “Matters Filed with Clerk” and “Additional Filings with Clerk”.

Year-to-Date Filings

Total number of new filings since the beginning of calendar year (January 1) to the end of reporting period.

Section II. Resolution Category

Adoption - Resolved by Trial

Court Decision after Non-Jury Trial (CDAT)

Adoption - Uncontested

Consolidated Case (CONS)
Uncontested Resolution (UNDS)

Adoption - Settlement/Dismissal

Closed by Court Order after a Hearing (CLCO)
Dismissal without Trial (DSM)
Dismissal after Non-Jury Trial Commencement (DAT)
Settled after Non-Jury Trial Commencement (SAT)
Settled by Parties/Agreed Judgment (STPR)

Adoption - Closure by Clerk

Dismissal/Closure by Clerk (DSCK)

Adoption - Others

Change of Venue/Jurisdiction (CHV)
Other Non-specified Resolutions

Civil - Resolved by Jury Trial

Jury Verdict after Trial (JVAT)

Civil - Resolved by Non-Jury Trial

Court Decision after Non-Jury Trial (CDAT)

Civil - Summary Judgment

Summary Judgment (SMJG)

Civil - Default/Uncontested

Consolidated Case (CONS)
Default Judgment (DFJG)
Uncontested Resolution (UNDS)

Civil - Arbitration

Settle by Arbitration (ARBA)

Civil - Settlement/Dismissal

Closed by Court Order after a Hearing (CLCO)
Dismissal after Non-Jury Trial (DAT)
Dismissal after Jury Trial (DJT)
Dismissal (DSM)
Settled after Non-Jury Trial Commencement (SAT)
Settled after Jury Trial Commencement (SJT)
Settled by Parties/Agreed Judgment (STPR)

Civil - Closure by Clerk

Dismissal/Closure by Clerk (DSCK)

Civil - Others

Transferred to Federal bankruptcy Court (BANK)
Change of Venue/Jurisdiction (CHV)
Other Non-specified Resolutions

Civil RALJ - RALJ Decision

Court Decision to Affirm Appeal/review (CDTA)
Court Decision to Modify Appeal/Review (CDTM)
Court Decision to Reverse Appeal/review (CDTR)

Civil RALJ - Dismissal

Dismissal and Remand of Appeal/Review (DSRM)

Civil RALJ - Others

Other Non-specified Resolutions

Comparison with Court Standard

Percentage of cases actually falling within the Court’s standard benchmark.

Court Standard

Benchmarks set by a state advisory committee and adopted by the court indicating percentage of cases to be resolved at certain age (in months, 1 month = 30 days as used in the Advisory Case Processing Time Standard as published in the Court Rule).

Court standard is based on timelines as suggested by State Advisory Committee. For a case type with no time standard, the standard for a similar case type is adopted if appropriate.

Criminal: 90% by 4 months, 98% by 6 months, 100% by 9 months.

Civil: 90% by 12 months, 98% by 18 months, 100% by 24 months.

Domestic: 90% by 8 months, 98% by 10 months, 100% by 14 months.

Probate/Guardianship: 90% by 8 months, 98% by 18 months, 100% by 36 months.

Adoption/Paternity: 90% by 8 months, 98% by 10 months, 100% by 14 months.

Mental Illness/Juvenile Truancy: No standard yet.

Juvenile Dependency: 90% by 8 months, 98% by 10 months, 100% by 14 months.

Juvenile Offender: 90% by 4 months, 98% by 6 months, 100% by 9 months.

Criminal RALJ/Civil RALJ: 90% by 4 months, 98% by 5 months, 100% by 6 months.

Criminal - Resolved by Jury Trial

Acquittal by Jury (AQJV)
Convicted - Jury Verdict after Trial (CVJV)

Criminal - Resolved by Non-Jury Trial

Acquittal by Court (AQCT)
Convicted - Court Decision after Non-Jury Trial (CVCT)

Criminal - Resolved by Guilty Plea

Guilty Plea (GP)
Guilty Plea after Non-Jury Trial Commencement (GPAT)
Guilty Plea after Jury Trial Commencement (GPJT)

Criminal - Dismissal

Dismissal after Non-Jury Trial Commencement (DAT)
Dismissal after Jury Trial Commencement (DJT)
Dismissal (DSM)

Criminal - Others

Change of Venue (CHV)
Consolidated Case (CONS)
Continued Order of Prosecution with Completion (CTOP)*
Deferred Prosecution (DFPD)
Dismissal/Closure by Clerk (DSCK)
Governor’s warrant (GW)
Not Guilty by Reason of Insanity (NGRI)
Uncontested Resolution (UNDS)
Waiver of Extradition (WE)
Other Non-specified Resolutions

* Note: For adult criminal cases, “CTOP” does not necessarily constitute resolution. An adult criminal case with a “CTOP” as resolution code is counted as a resolved case only if a completion code exists along with the “CTOP”. If the resolution code is CTOP and there is no completion code, then the case is treated as unresolved. The primary reason for combining “CTOP” with a completion code is to determine resolution for drug court cases (CTOP is entered in the

SCOMIS resolution field as soon as a defendant enrolls in Drug Court). This rule on “CTOP” applies to adult criminal cases only.

Criminal RALJ - RALJ Decision

Court Decision to Affirm Appeal/review (CDTA)
Court Decision to Modify Appeal/Review (CDTM)
Court Decision to Reverse Appeal/review (CDTR)

Criminal RALJ - Dismissal

Dismissal and Remand of Appeal/Review (DSRM)

Criminal RALJ - Others

Other Non-specified Resolutions

Domestic - Resolved by Trial

Court Decision after Non-Jury Trial (CDAT)

Domestic - Default/Uncontested

Consolidated Case (CONS)
Default Judgment (DFJG)
Uncontested Resolution (UNDS)

Domestic - Settlement/Dismissal

Settled by Arbitration (ARBA)
Closed by Court Order after a Hearing (CLCO)
Dismissal after Non-Jury Trial Commencement (DAT)
Dismissal (DSM)
Settled after Non-Jury Trial Commencement (SAT)
Settled by Parties/Agreed Judgment (STPR)

Domestic - Closure by Clerk

Dismissal/Closure by Clerk (DSCK)

Domestic - Others

Change of Venue/Jurisdiction (CHV)
Summary Judgment (SMJG)
Other Non-specified Resolutions

Guardianship - Guardian Appointed

Guardian Appointed (PRGA)

Guardianship - Dismissal

Closed by Court Order after a Hearing (CLCO)
Dismissal (DSM)

Guardianship - Closure by Clerk

Dismissal/Closure by Clerk (DSCK)

Guardianship - Others

Change of Venue/Jurisdiction (CHV)
Consolidated Case (CONS)
Uncontested Resolution (UNDS)
Other Non-specified Resolutions

Juvenile Dependency - Finding of Dependency

Approved Petition (APP)

Juvenile Dependency - Dismissal

Dismissal (DSM)

Juvenile Dependency - Others

Change of Venue/Jurisdiction (CHV)
Consolidated Case (CONS)
Transfer of Jurisdiction (TRJU)
Other Non-specified Resolutions

Juvenile Offender - Resolved by Trial

Acquittal by Court (AQCT)
Convicted - Court Decision after Adjudictory Hearing (CVCT)

Juvenile Offender - Resolved by Guilty Plea

Guilty Plea before Adjudictory Hearing Commencement (GP)
Guilty Plea after Adjudictory Hearing Commencement (GPAT)

Juvenile Offender - Dismissal

Dismissal after Adjudictory Hearing Commencement (DAT)
Dismissal (DSM)

Juvenile Offender - Others

Change of venue (CHV)
Dismissal/Closure by Clerk (DSCK)
Consolidated Case (CONS)

Continued Prosecution (CTOP)
Decline of Jurisdiction (DECL)
Uncontested Resolution (UNDS)
Other Non-specified Resolutions

Juvenile Truancy - Finding of Truancy

Approved Petition (APP)

Juvenile Truancy - Dismissal

Dismissal (DSM)

Juvenile Truancy - Others

Change of Venue (CHV)
Consolidated Case (CONS)
Transfer of Jurisdiction (TRJU)
Other Non-specified Resolutions

Mental Illness - Court Decision to Commit

Court Decision to Commit (CDTC)

Mental Illness - Closed by Court

Closed by Court (CLCO)

Mental Illness - Dismissal

Dismissal (DSM)

Mental Illness - Others

Change of Venue/Jurisdiction (CHV)
Uncontested Resolution (UNDS)
Other Non-specified Resolutions

Paternity - Resolved by Trial

Court Decision after Non-Jury Trial (CDAT)

Paternity - Summary Judgment

Summary Judgment (SMJG)

Paternity - Default/Uncontested

Consolidated Case (CONS)
Default Judgment (DFJG)
Uncontested Resolution (UNDS)

Paternity - Settlement/Dismissal

Settled by Arbitration (ARBA)
Closed by Court Order after a Hearing (CLCO)
Dismissal after Non-Jury Trial Commencement (DAT)
Dismissal (DSM)
Settled after Non-Jury Trial Commencement (SAT)
Settled by Partied/Agreed Judgment (STPR)

Paternity - Closure by Clerk

Dismissal/Closure by Clerk (DSCK)

Paternity - Others

Change of Venue (CHV)
Other Non-specified Resolutions

Percentile

Percent of cases resolved at a given age. For example, if resolved cases had a 98 percentile of 12 months, it means that 98% of the cases were resolved within the age of 12 months, or conversely 2% of the cases were resolved after 12 months, not counting suspense time.

Probate - Personal Representative Appointed

Non-Intervention Probate (NIP)
Personal Representative Appointed (PRGA)

Probate - Dismissal

Closed by Court Order after a Hearing (CLCO)
Dismissal (DSM)

Probate - Closure by Clerk

Dismissal/Closure by Clerk (DSCK)

Probate - Others

Change of Venue (CHV)
Consolidated Case (CONS)
Uncontested Resolution (UNDS)
Other Non-specified Resolutions

Backlogged Cases

Active pending cases with an age exceeding the court-adopted time standard for each specific case type (recommended by the State Advisory Committee, see definition for *Court Standard*).

Section III. Pending Caseload

Adjustment

Adjustment made because of vacating of resolutions, or change in suspense status between two reporting period.

End Pending

Total number of pending cases at the end of reporting period.

Previous Pending

Total number of pending cases at the beginning of reporting period.

Resolution Rate

Resolution rate is defined as the ratio of number of resolutions to number of new filings (i.e., number of resolutions divided by number of new filings) during the reporting period. The resolution rate measures the relative pace of resolution in relation to the pace of new filings. A resolution rate of greater than 1 indicates the number of resolutions exceeds the number of new filings.

On-review Status

Cases that have been resolved (post-resolution) but still need court resources for periodic review and other remaining outstanding issues.

Probate (EST), Paternity (PAT) and Dependency (DEP): Resolved and not completed (paternity or dependency established, but outstanding issues remain).

Guardianship (GDN,LGD,G/E): Resolved and on tracks of G1,G2,G3,GE or GD; Minor Settlement (MST): Resolved with a future hearing date.

Section IV. Age of Pending Cases

Case Age

The age of a case is the time (number of days) since the filing date, less any suspense time if applicable.

Median Age

The median age is the time that 50% of the cases are under and 50% are above the given age. For example, if pending cases have a median age of 12 months, it means that 50% of the pending cases are within the age of 12 months, and 50% of pending cases are over 12 months. The median age is more robust to cases with extreme age values than the average age.

Suspense Time

Time (days) that a case is on suspense status before its resolution. If a case has more than one suspense between filing and resolution, the suspense time is the total from all suspenses. Time on suspense status after resolution (e.g., appeals) is not counted.