

King County Superior Court
Quarterly Statistical Report

Fourth Quarter 2015

Department of Judicial Administration
Prepared by: Shiquan Liao, Ph.D., Statistician

Release Date: January 20, 2016

Report #: QTR-2015-4

Table 1. Year-to-Date Filing Activity

King County Superior Court

Reporting Category	Year-to-Date and Annual Filing Activity ⁽¹⁾					2014-2015 change (+ means "increase")		% of 2015 Total Filing ⁽²⁾
	2011	2012	2013	2014	2015	Cases	Percentage	
Total (incl. RALJ)								
Year-to-Date Filing	58337	54834	52755	52224	51652	-572	-1.1%	
Annual Filing	58337	54834	52755	52224	51652			
Criminal (excl. RALJ)								
Year-to-Date Filing	5986	5942	6045	6213	6237	+24	+0.4%	12.1%
Annual Filing	5986	5942	6045	6213	6237			
General Civil (excl. Asbestos)								
Year-to-Date Filing	27499	24477	22347	21378	21181	-197	-0.1%	41.0%
Annual Filing	27499	24477	22347	21378	21181			
Asbestos Cases (civil) ⁽³⁾								
Year-to-Date Filing	43	36	63	40	36	-4	-10.0%	0.1%
Annual Filing	43	36	63	40	36			
Domestic								
Year-to-Date Filing	7865	7678	7897	7921	7559	-362	-4.6%	14.6%
Annual Filing	7865	7678	7897	7921	7559			
Probate								
Year-to-Date Filing	5417	5492	5844	5920	6022	+102	+1.7%	11.7%
Annual Filing	5417	5492	5844	5920	6002			
Guardianship								
Year-to-Date Filing	837	879	884	928	969	+41	+4.4%	1.9%
Annual Filing	837	879	884	928	969			
Adoption								
Year-to-Date Filing	688	511	483	470	460	-10	-2.1%	0.9%
Annual Filing	688	511	483	470	460			
Paternity								
Year-to-Date Filing	1039	1161	931	702	650	-52	-7.4%	1.3%
Annual Filing	1039	1161	931	702	650			
Mental Illness								
Year-to-Date Filing	3506	3591	3678	3852	4004	+152	+3.9%	7.8%
Annual Filing	3506	3591	3678	3852	4004			
Juvenile Dependency (DEP)								
Year-to-Date Filing	838	853	893	940	848	-92	-9.8%	1.6%
Annual Filing	838	853	893	940	848			
Juvenile Termination (TER)								
Year-to-Date Filing	226	200	209	325	214	-111	-34.2%	0.4%
Annual Filing	226	200	209	325	214			
Juvenile ARY/CHINS/OTHERS								
Year-to-Date Filing	303	242	168	285	217	-68	-23.9%	0.4%
Annual Filing	303	242	168	285	217			
Juvenile Truancy								
Year-to-Date Filing	1350	1271	1236	1233	1369	+136	+11.0%	2.7%
Annual Filing	1350	1271	1236	1233	1369			
Juvenile Offender								
Year-to-Date Filing	2496	2249	1808	1802	1649	-153	-8.5%	3.2%
Annual Filing	2496	2249	1808	1802	1649			
Criminal RALJ								
Year-to-Date Filing	191	192	181	172	180	+8	+4.7%	0.3%
Annual Filing	191	192	181	172	180			
Civil RALJ								
Year-to-Date Filing	57	63	53	47	57	+10	+21.3%	0.1%
Annual Filing	57	63	53	47	57			
Matters Filed with Clerk ⁽⁴⁾								
Year-to-Date Filing	14799	15046	13763	12240	9581	-2659	-21.7%	
Annual Filing	14799	15046	13763	12240	9581			

(1) New filings only (based on filing date), excluding re-opened cases (unable to count), and reflecting all documents received by 01/15/2016.

(2) New filings of each reporting category as percentage of "Year-to-Date Filing".

(3) "Matters Filed with Clerk" and "Additional Filings with Clerk" are not included in the "Total".

Chart 1-A. Quarterly Filing Activity
Total Judicial Cases Only ("Matters Filed with Clerk" excluded)

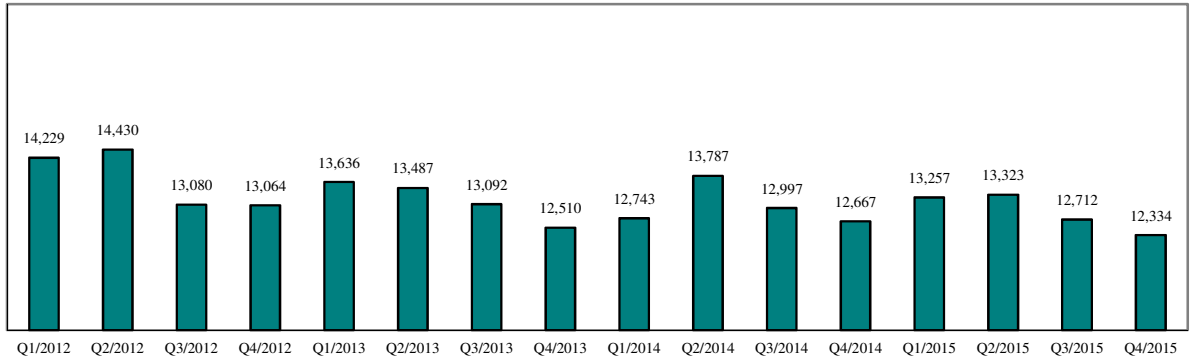
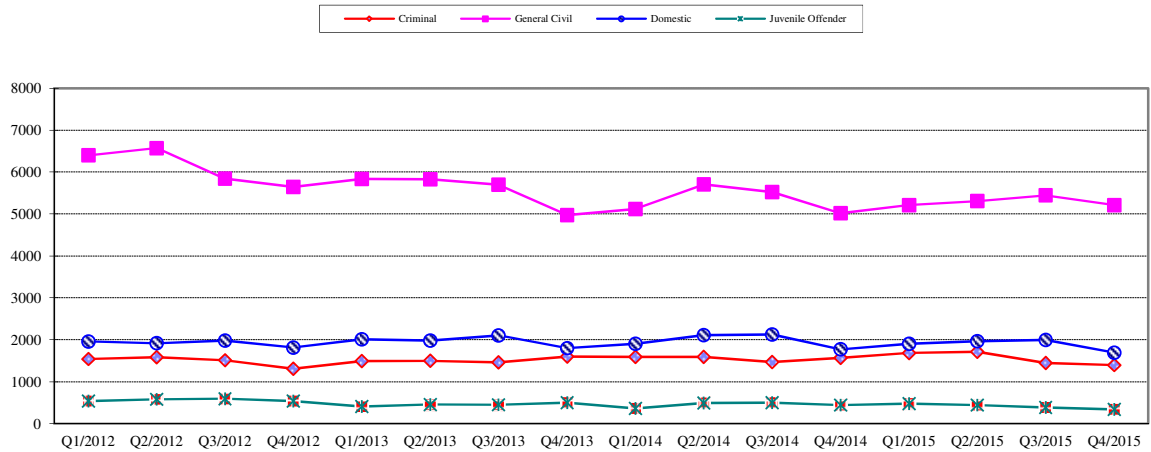


Chart 1-B. Quarterly Filings: Criminal, Domestic, General Civil and Juvenile Offender Cases Only



* Note: "General Civil" is specifically defined in this report. The category of "General Civil" does **not** include the following case types: domestic, probate, guardianship, adoption, paternity, mental illness, juvenile cases (dependency, at-risk youth, child-in-need of service, civil RALJ, and tax filings that don't require judicial resources ("matters filed with clerk"). Please check the Appendix for the cause codes in the "General Civil" category.

Table 1-A. Post-Resolution Modifications (Domestic and Paternity Cases)

Based on Tracks Opened After Original Resolution Date

		2013Q1			2013Q2			2013Q3			2013Q4			Year 2013		
Location	Case Type	DMOD	DTBA	Total	DMOD	DTBA	Total	DMOD	DTBA	Total	DMOD	DTBA	Total	DMOD	DTBA	Total
KNT	Domestic	160	47	207	149	59	208	179	45	224	152	53	205	640	204	844
	Paternity	17	7	24	13	11	24	14	3	17	11	7	18	55	28	83
KNT Total		177	54	231	162	70	232	193	48	241	163	60	223	695	232	927
SEA	Domestic	132	67	199	169	102	271	185	74	259	152	70	222	638	313	951
	Paternity	6	9	15	16	11	27	18	6	24	13	5	18	53	31	84
SEA Total		138	76	214	185	113	298	203	80	283	165	75	240	691	344	1035
KNT/SEA Total		315	130	445	347	183	530	396	128	524	328	135	463	1386	576	1962
		2014Q1			2014Q2			2014Q3			2014Q4			Year 2014		
Location	Case Type	DMOD	DTBA	Total	DMOD	DTBA	Total	DMOD	DTBA	Total	DMOD	DTBA	Total	DMOD	DTBA	Total
KNT	Domestic	144	43	187	172	66	238	183	46	229	164	42	206	663	197	860
	Paternity	15	4	19	11	7	18	13	4	17	16	6	22	55	21	76
KNT Total		159	47	206	183	73	256	196	50	246	180	48	228	718	218	936
SEA	Domestic	155	59	214	155	104	259	170	76	246	154	57	211	634	296	930
	Paternity	14	6	20	8	10	18	15	11	26	9	4	13	46	31	77
SEA Total		169	65	234	163	114	277	185	87	272	163	61	224	680	327	1007
KNT/SEA Total		328	112	440	346	187	533	381	137	518	343	109	452	1398	545	1943
		2015Q1			2015Q2			2015Q3			2015Q4			Year 2015		
Location	Case Type	DMOD	DTBA	Total	DMOD	DTBA	Total	DMOD	DTBA	Total	DMOD	DTBA	Total	DMOD	DTBA	Total
KNT	Domestic	166	37	203	188	49	237	168	31	199	166	32	198	688	149	837
	Paternity	14	4	18	18	8	26	15	3	18	8	6	14	55	21	76
KNT Total		180	41	221	206	57	263	183	34	217	174	38	212	743	170	913
SEA	Domestic	150	56	206	145	85	230	171	44	215	146	49	195	612	234	846
	Paternity	8	8	16	8	7	15	7	8	15	5	4	9	28	27	55
SEA Total		158	64	222	153	92	245	178	52	230	151	53	204	640	261	901
KNT/SEA Total		338	105	443	359	149	508	361	86	447	325	91	416	1383	431	1814

* DMOD = parenting plan modification track; DTBA = support modification track.

Table 2. Number of Cases Resolved and Resolution Category (%)

King County Superior Court

Reporting Category	Q1/14	Q2/14	Q3/14	Q4/14	Q1/15	Q2/15	Q3/15	Q4/15*
Total Resolutions (excl. "Matters Filed with Clerk")	13126	13573	13855	13195	13228	15990	13497	13206
Criminal (excl. RALJ): # Resolved	1475	1440	1540	1535	1507	1731	1635	1532
Resolved by Jury Trial	3.9%	3.8%	3.2%	3.4%	3.6%	2.8%	2.6%	3.3%
Resolved by Non-Jury Trial	1.0%	1.3%	1.0%	2.0%	0.7%	0.2%	0.5%	0.5%
Resolved by Guilty Plea	78.9%	77.2%	80.6%	80.4%	78.0%	80.2%	81.7%	80.6%
Dismissal	16.0%	17.4%	15.0%	13.8%	17.7%	16.7%	14.7%	15.3%
Others	0.3%	0.2%	0.3%	0.5%	0.1%	0.2%	0.4%	0.4%
General Civil: # Resolved	5751	6055	6111	5650	5718	5639	5933	5853
Resolved by Jury Trial	0.4%	0.4%	0.4%	0.6%	0.7%	0.5%	0.5%	0.5%
Resolved by Non-Jury Trial	0.6%	0.3%	0.3%	0.4%	0.2%	0.6%	0.5%	0.3%
Summary Judgment	1.8%	2.5%	2.2%	2.2%	1.5%	2.1%	1.6%	1.8%
Default/ Uncontested	35.8%	37.9%	41.3%	37.4%	40.1%	39.1%	41.0%	42.1%
Arbitration	2.4%	2.8%	2.3%	2.7%	3.0%	3.0%	2.9%	2.7%
Settlement/Dismissal	51.5%	50.6%	49.7%	53.0%	51.1%	51.8%	50.4%	48.3%
Closure by Clerk	3.0%	2.9%	2.3%	2.3%	2.4%	2.1%	2.2%	3.6%
Others	4.5%	2.7%	1.5%	1.4%	0.9%	0.9%	0.8%	0.7%
Asbestos Cases (civil): # Resolved	26	13	14	14	25	9	12	10
Resolved by Jury Trial	0.0%	0.0%	7.1%	0.0%	0.0%	0.0%	0.0%	0.0%
Resolved by Non-Jury Trial	0.0%	0.0%	0.0%	0.0%	0.0%	0.0%	0.0%	0.0%
Summary Judgment	3.9%	7.7%	7.1%	14.3%	4.0%	0.0%	0.0%	50.0%
Default/ Uncontested	7.7%	0.0%	14.3%	14.3%	0.0%	11.1%	8.3%	0.0%
Arbitration	0.0%	0.0%	0.0%	0.0%	0.0%	0.0%	0.0%	0.0%
Settlement/Dismissal	80.8%	69.2%	64.3%	57.1%	64.0%	55.6%	66.7%	20.0%
Closure by Clerk	0.0%	23.1%	7.1%	14.3%	28.0%	33.3%	25.0%	30.0%
Others	0.0%	0.0%	0.0%	0.0%	4.0%	0.0%	0.0%	0.0%
Domestic: # Resolved	1933	2022	1963	1994	1915	2031	1959	2019
Resolved by Trial	4.2%	4.4%	4.3%	3.7%	3.9%	5.4%	5.2%	4.4%
Default/ Uncontested	8.6%	9.3%	9.0%	8.7%	11.3%	10.5%	10.0%	10.3%
Settlement /Dismissal	86.3%	85.5%	86.2%	87.2%	84.2%	83.4%	83.6%	84.5%
Closure by Clerk	0.5%	0.5%	0.3%	0.4%	0.3%	0.5%	0.5%	0.6%
Others	0.5%	0.4%	0.2%	0.1%	0.4%	0.2%	0.8%	0.3%
Probate: # Resolved	1441	1520	1454	1448	1575	1507	1431	1397
Personal Rep. Appointed	73.6%	71.5%	69.4%	71.7%	72.1%	72.3%	72.6%	72.8%
Dismissal	1.5%	3.4%	2.6%	3.3%	1.9%	2.7%	3.6%	4.3%
Closure by Clerk	0.0%	0.2%	0.1%	0.2%	0.0%	0.0%	0.0%	0.6%
Others	24.8%	24.9%	27.9%	24.9%	26.0%	25.0%	23.8%	22.3%
Guardianship: # Resolved	214	257	237	232	204	235	228	228
Guardian Appointed	53.3%	54.5%	52.3%	48.7%	56.4%	51.1%	54.4%	54.8%
Dismissal	46.3%	44.0%	45.6%	51.3%	43.6%	46.8%	43.9%	44.7%
Closure by Clerk	0.0%	0.4%	0.0%	0.0%	0.0%	0.0%	0.0%	0.0%
Others	0.5%	1.2%	2.1%	0.0%	0.0%	2.1%	1.8%	0.4%
Adoption: # Resolved	87	152	110	139	97	130	106	131
Resolved by Trial	0.0%	2.6%	0.9%	0.7%	0.0%	0.0%	0.0%	0.8%
Uncontested	10.3%	5.3%	7.3%	3.6%	11.3%	2.3%	7.6%	3.1%
Settlement /Dismissal	88.5%	92.1%	90.9%	95.0%	87.6%	97.7%	91.5%	93.9%
Closure by Clerk	1.2%	0.0%	0.0%	0.0%	0.0%	0.0%	0.0%	0.8%
Others	0.0%	0.0%	1.8%	0.7%	1.0%	0.0%	0.9%	1.5%
Paternity: # Resolved	264	231	193	171	154	161	176	153
Resolved by Trial	0.4%	0.9%	0.5%	1.2%	2.6%	3.1%	4.6%	0.0%
Summary Judgment	48.9%	25.1%	50.8%	53.8%	39.6%	41.0%	48.9%	45.8%
Default/ Uncontested	25.8%	32.0%	19.2%	18.1%	22.7%	25.5%	19.3%	24.2%
Settlement/Dismissal	24.6%	28.1%	29.5%	26.9%	35.1%	29.8%	27.3%	29.4%
Closure by Clerk	0.4%	0.0%	0.0%	0.0%	0.0%	0.0%	0.0%	0.0%
Others	0.0%	0.0%	0.0%	0.0%	0.0%	0.6%	0.0%	0.7%

Reflecting all documents received by 01/15/2016.

Table 2 (cont.). Number of Cases Resolved and Resolution Category (%)

King County Superior Court

Reporting Category	Q1/14	Q2/14	Q3/14	Q4/14	Q1/15	Q2/15	Q3/15	Q4/15*
Mental Illness: # Resolved	859	996	1016	963	922	1005	1128	957
Court Decision to Commit	66.5%	63.9%	66.5%	63.9%	67.7%	62.9%	63.4%	60.4%
Closed by Court	0.2%	0.0%	0.0%	0.0%	0.0%	0.0%	0.0%	0.0%
Dismissal	21.0%	20.6%	18.7%	22.5%	19.6%	19.7%	18.2%	19.8%
Others	12.3%	15.6%	14.8%	13.6%	12.7%	17.4%	18.4%	19.9%
Juv. Dependency: # Resolved	240	224	310	202	196	208	153	159
Finding of Dependency	165	154	233	133	70.9%	76.0%	67.3%	80.5%
Dismissal	72	70	77	69	27.6%	23.6%	32.0%	19.5%
Others	3	0	0	0	1.5%	0.5%	0.7%	0.0%
Juv. Terminations: # Resolved	68	48	59	51	74	50	49	61
Finding of Dependency	59	42	48	43	94.6%	88.0%	77.6%	77.0%
Dismissal	9	6	10	10	5.4%	12.0%	22.4%	23.0%
Others	0	0	1	0	0.0%	0.0%	0.0%	0.0%
Juv. ARY/CHINS/OTHER:# Resolved	68	61	66	66	56	66	61	36
Approve of Petition	64.7%	57.4%	65.1%	63.6%	51.8%	53.0%	39.3%	52.8%
Dismissal	35.3%	42.6%	34.9%	36.4%	46.4%	47.0%	60.7%	47.2%
Others	0.0%	0.0%	0.0%	0.0%	1.8%	0.0%	0.0%	0.0%
Juvenile Truancy: # Resolved	189	109	298	203	270	288	124	264
Approve of Petition	48.7%	72.5%	0.7%	9.9%	45.6%	37.2%	0.8%	1.9%
Dismissal	51.3%	24.8%	99.3%	90.2%	54.4%	62.9%	99.2%	98.1%
Others	0.0%	2.8%	0.0%	0.0%	0.0%	0.0%	0.0%	0.0%
Juvenile Offender: # Resolved	465	413	429	480	456	418	451	363
Resolved by Trial (Fact Finding)	3.9%	7.8%	7.2%	5.4%	6.6%	4.1%	3.8%	1.1%
Resolved by Guilty Plea	41.3%	34.1%	30.8%	33.3%	32.5%	35.4%	28.4%	34.7%
Dismissal	35.5%	43.6%	37.8%	46.5%	44.5%	41.6%	43.7%	46.3%
Deferred Disposition (DDSP)	16.8%	11.1%	19.8%	11.7%	12.9%	15.3%	17.3%	13.2%
Others (including Deferred Prosecution)	2.6%	3.4%	4.4%	3.1%	3.5%	3.6%	6.9%	4.7%
Criminal RALJ: # Resolved	41	48	41	32	45	55	39	35
RALJ Decision	73.2%	72.9%	56.1%	78.1%	71.1%	69.1%	56.4%	54.3%
Dismissal	24.4%	25.0%	36.6%	21.9%	26.7%	29.1%	35.9%	45.7%
Others	2.4%	2.1%	7.3%	0.0%	2.2%	1.8%	7.7%	0.0%
Civil RALJ: # Resolved	15	11	14	17	14	18	12	8
RALJ Decision	40.0%	63.6%	71.4%	41.2%	35.7%	27.8%	16.7%	12.5%
Dismissal	46.7%	27.3%	21.4%	58.8%	50.0%	55.6%	83.3%	62.5%
Others	13.3%	9.1%	7.2%	0.0%	14.3%	16.7%	0.0%	25.0%

* Reflecting all documents received by 01/15/2016.

Chart 2-A. Quarterly Resolutions
Total Judicial Cases Only ("Matters Filed with Clerk" excluded)

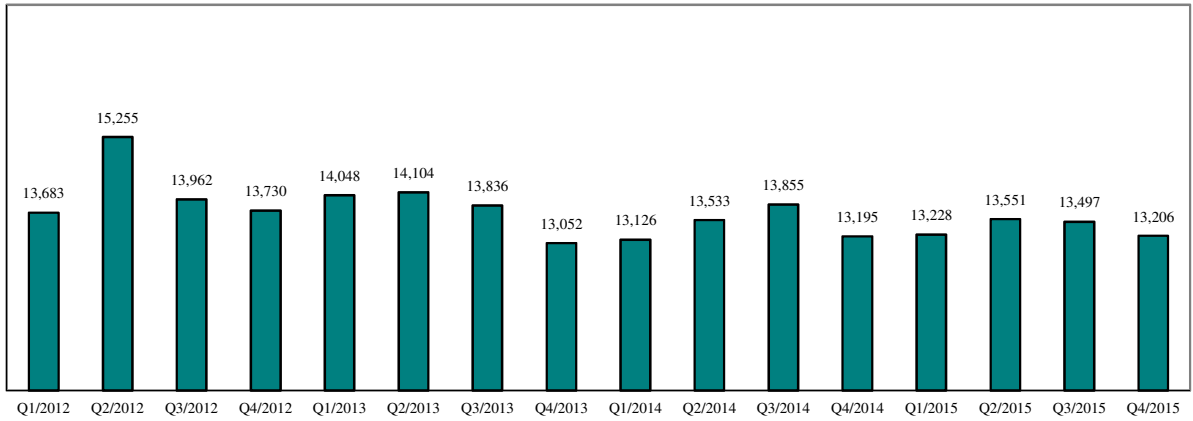
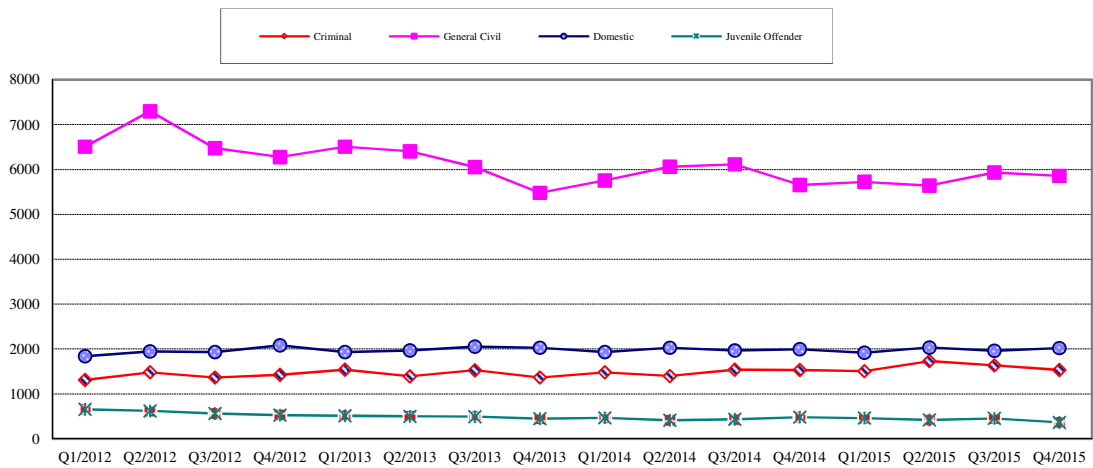


Chart 2-B. Quarterly Resolutions: Criminal, Dmestic, General Civil and Juvenile Offender Cases Only



* Note: "General Civil" is specifically defined in this report. The category of "General Civil" does **not** include the following case types: domestic, probate, guardianship, adoption, paternity, mental illness, juvenile cases (dependency, at-risk youth, child-in-need of service), civil RALJ, and tax filings that don't require judicial resources ("matters filed with clerk"). Please check the Appendix for the cause codes in the "General Civil" category.

Table 3. Age of Resolved Cases
King County Superior Court

Reporting Category	Age of Cases at Resolution							
	Q1/14	Q2/14	Q3/14	Q4/14	Q1/15	Q2/15	Q3/15	Q4/15*
Criminal (excl. RALJ)								
Age (days)								
50% Cases Resolved by Day	118	117	117	118	124	105	112	113
90% Cases Resolved by Day	378	360	345	342	366	343	326	306
Comparison with Court Standard of								
90% in 4 months	51%	51%	51%	51%	49%	56%	53%	53%
98% in 6 months	69%	67%	71%	70%	67%	72%	72%	73%
100% in 9 months	83%	83%	84%	86%	82%	86%	85%	88%
General Civil ⁽¹⁾								
Age (days)								
50% Cases Resolved by Day	42	36	31	35	30	36	31	35
90% Cases Resolved by Day	520	468	435	437	425	413	407	398
Comparison with Court Standard of								
90% in 12 months	81%	84%	85%	84%	84%	85%	85%	88%
98% in 18 months	91%	94%	95%	94%	96%	94%	95%	97%
100% in 24 months	96%	98%	98%	99%	99%	99%	98%	99%
Domestic								
Age (days)								
50% Cases Resolved by Day	175	181	148	164	171	175	161	149
90% Cases Resolved by Day	373	376	363	364	357	365	368	372
Comparison with Court Standard of								
90% in 8 months	62%	64%	68%	67%	66%	60%	64%	66%
98% in 10 months	73%	75%	76%	78%	76%	72%	75%	76%
100% in 14 months	94%	93%	94%	94%	95%	95%	94%	93%
Probate								
Age (days)								
50% Cases Resolved by Day	0	0	0	0	0	0	0	0
90% Cases Resolved by Day	5	21	15	17	7	13	19	19
Comparison with Court Standard of								
90% in 8 months	99%	98%	97%	99%	99%	98%	97%	97%
98% in 18 months	100%	99%	100%	100%	100%	100%	99%	99%
100% in 36 months	100%	100%	100%	100%	100%	100%	100%	100%
Guardianship								
Age (days)								
50% Cases Resolved by Day	66	59	67	68	65	65	71	62
90% Cases Resolved by Day	223	221	322	274	237	242	211	193
Comparison with Court Standard of								
90% in 8 months	93%	91%	89%	88%	89%	89%	91%	92%
98% in 18 months	100%	97%	97%	98%	97%	99%	98%	99%
100% in 36 months	100%	99%	100%	99%	99%	100%	100%	100%
Adoption								
Age (days)								
50% Cases Resolved by Day	45	88	40	56	79	70	42	55
90% Cases Resolved by Day	185	593	943	230	504	414	298	211
Comparison with Court Standard of								
90% in 8 months	92%	74%	86%	90%	81%	84%	90%	89%
98% in 10 months	92%	77%	89%	90%	84%	87%	93%	91%
100% in 14 months	95%	81%	89%	96%	88%	91%	95%	94%
Paternity								
Age (days)								
50% Cases Resolved by Day	190	154	155	145	141	139	135	139
90% Cases Resolved by Day	273	288	292	286	309	303	307	272
Comparison with Court Standard of								
90% in 8 months	76%	84%	83%	82%	78%	76%	76%	84%
98% in 10 months	95%	93%	94%	93%	87%	89%	90%	94%
100% in 14 months	98%	96%	97%	98%	96%	96%	98%	98%

Table 3 (cont.) Age of Resolved Cases
King County Superior Court

Reporting Category	Age of Cases at Resolution							
	Q1/14	Q2/14	Q3/14	Q4/14	Q1/15	Q2/15	Q3/15	Q4/15*
Mental Illness**								
Age (days)								
50% Cases Resolved by Day	3	3	2	3	3	4	4	4
90% Cases Resolved by Day	10	13	10	10	12	14	18	21
Juvenile Dependency (DEP)								
Age (days)								
50% Cases Resolved by Day	133	104	115	121	111	121	89	125
90% Cases Resolved by Day	448	252	402	253	312	250	217	221
Comparison with Court Standard of								
90% in 8 months	84%	89%	79%	89%	85%	90%	90%	94%
98% in 10 months	87%	93%	82%	92%	91%	95%	92%	95%
100% in 14 months	89%	98%	91%	97%	98%	99%	94%	98%
Juvenile Termination (TER)								
Age (days)								
50% Cases Resolved by Day	173	138	152	131	138	182	154	106
90% Cases Resolved by Day	427	292	346	321	263	282	382	350
Comparison with Court Standard of								
90% in 8 months	71%	85%	68%	81%	83%	80%	73%	81%
98% in 10 months	77%	93%	83%	89%	94%	94%	89%	84%
100% in 14 months	88%	100%	95%	100%	99%	96%	94%	97%
Juv ARY/CHINS/OTHER								
Age (days)								
50% Cases Resolved by Day	48	24	35	34	80	37	103	35
90% Cases Resolved by Day	1058	109	235	184	622	139	304	288
Comparison with Court Standard of								
90% in 8 months	83%	95%	93%	95%	87%	94%	73%	90%
98% in 10 months	86%	99%	100%	99%	89%	96%	88%	93%
100% in 14 months	86%	100%	100%	100%	89%	98%	97%	97%
Juvenile Truancy**								
Age (days)								
50% Cases Resolved by Day	39	30	36	108	128	133	182	269
90% Cases Resolved by Day	150	94	148	214	750	357	646	394
Juvenile Offender								
Age (days)								
50% Cases Resolved by Day	71	78	66	84	98	89	92	88
90% Cases Resolved by Day	195	250	236	241	267	257	273	257
Comparison with Court Standard of								
90% in 4 months	76%	67%	72%	63%	61%	66%	63%	66%
98% in 6 months	88%	78%	84%	80%	78%	83%	79%	79%
100% in 9 months	95%	91%	91%	93%	91%	91%	90%	91%
Criminal RALJ								
Age (days)								
50% Cases Resolved by Day	264	282	228	258	296	251	258	260
90% Cases Resolved by Day	371	482	353	407	725	456	438	421
Civil RALJ								
Age (days)								
50% Cases Resolved by Day	157	175	186	164	180	167	165	170
90% Cases Resolved by Day	246	329	299	352	272	216	336	249

* Reflecting all documents received by 01/15/2016.

** No standard yet.

Table 4. Active Pending Caseload Statistics
King County Superior Court

Reporting Category	Q1/14	Q2/14	Q3/14	Q4/14	Q1/15	Q2/15	Q3/15	Q4/15*
Total (incl. RALJ)								
Previous Pending (+)	18749	18514	19112	18951	18811	18603	18623	18333
New Filing (+)	12743	13787	12997	12667	13257	13323	12712	12334
Resolved (-)	13126	13573	13855	13195	13228	13551	13497	13206
End Pending	18514	19112	18951	18811	18630	18623	18333	17886
Resolution Rate**	1.023	0.982	1.066	1.042	0.998	1.017	1.062	1.071
Criminal (excl. RALJ)								
Previous Pending (+)	2865	2883	2966	2923	2866	2908	2882	2727
New Filing (+)	1587	1590	1465	1567	1682	1711	1446	1395
Resolved (-)	1475	1440	1540	1535	1507	1731	1635	1532
End Pending	2883	2966	2923	2866	2908	2882	2727	2619
Resolution Rate**	0.929	0.881	1.051	0.980	0.896	1.012	1.131	1.098
General Civil								
Previous Pending (+)	8003	7518	7542	7336	7079	7215	7036	6851
New Filing (+)	5122	5704	5527	5020	5213	5308	5448	5210
Resolved (-)	5751	6055	6111	5650	5718	5639	5933	5853
End Pending	7518	7542	7336	7079	7215	7036	6851	6691
Resolution Rate**	1.123	1.062	1.106	1.125	1.097	1.062	1.089	1.123
Asbestos Cases (civil) ⁽¹⁾								
Previous Pending (+)	92	77	70	71	69	57	54	60
New Filing (+)	9	7	14	9	9	6	18	2
Resolved (-)	26	13	14	14	25	8	12	10
End Pending	77	70	71	69	57	54	60	56
Resolution Rate**	2.889	1.857	1.000	1.556	2.778	1.333	0.667	5.000
Domestic								
Previous Pending (+)	4486	4499	4609	4802	4579	4520	4497	4562
New Filing (+)	1903	2110	2124	1773	1904	1964	1997	1694
Resolved (-)	1933	2022	1963	1994	1203	2031	1959	2019
End Pending	4499	4609	4802	4579	4520	4497	4562	4234
Resolution Rate**	1.016	0.958	0.924	1.125	1.006	1.034	0.981	1.192
Probate								
Previous Pending (+)	768	850	861	902	908	511	562	581
New Filing (+)	1501	1509	1474	1426	1652	1527	1422	1419
Resolved (-)	1441	1520	1454	1448	1575	1507	1431	1397
End Pending	850	861	902	908	511	562	581	580
Resolution Rate**	0.960	1.007	0.986	1.015	0.953	0.987	1.006	0.984
Guardianship								
Previous Pending (+)	303	334	320	316	301	274	283	305
New Filing (+)	245	241	232	219	221	245	251	253
Resolved (-)	214	257	237	232	204	235	228	228
End Pending	334	320	316	301	274	283	305	311
Resolution Rate**	0.873	1.066	1.022	1.059	0.923	0.959	0.908	0.901
Adoption								
Previous Pending (+)	187	200	158	151	149	163	154	163
New Filing (+)	121	110	103	135	112	119	114	114
Resolved (-)	87	152	110	139	97	130	106	131
End Pending	200	158	151	149	163	154	163	147
Resolution Rate**	0.719	1.382	1.068	1.030	0.866	1.092	0.930	1.149
Paternity								
Previous Pending (+)	446	384	338	295	300	282	316	293
New Filing (+)	197	179	146	180	146	191	149	163
Resolved (-)	264	231	193	171	154	161	176	153
End Pending	384	338	295	300	282	316	293	310
Resolution Rate**	1.340	1.291	1.322	0.950	1.055	0.843	1.181	0.939

* Reflecting all documents received by 01/15/2016.

** A value of "Resolution Rate" less than one indicates the resolution pace is slower than the filing pace.

Table 4 (cont.) Active Pending Caseload Statistics
King County Superior Court

Reporting Category	Q1/14	Q2/14	Q3/14	Q4/14	Q1/15	Q2/15	Q3/15	Q4/15*
Mental Illness								
Previous Pending (+)	104	119	137	120	121	143	162	122
New Filing (+)	876	1014	996	965	962	1024	1085	935
Resolved (-)	859	996	1016	963	922	1005	1128	957
End Pending	119	137	120	121	143	162	122	90
Resolution Rate**	0.981	0.982	1.020	0.998	0.958	0.981	1.040	1.024
Juvenile Dependency (DEP)								
Previous Pending (+)	386	420	528	398	414	325	333	394
New Filing (+)	244	302	181	213	171	222	205	259
Resolved (-)	240	224	310	202	196	208	153	159
End Pending	420	528	398	414	325	333	394	474
Resolution Rate**	0.984	0.742	1.713	0.948	1.146	0.937	0.746	0.614
Juvenile Termination (TER)								
Previous Pending (+)	121	119	132	161	225	175	169	194
New Filing (+)	58	60	86	121	43	47	73	51
Resolved (-)	68	48	59	53	74	50	49	61
End Pending	119	132	161	225	175	169	194	164
Resolution Rate**	1.172	0.800	0.686	0.438	1.721	1.064	0.671	1.196
Juvenile ARY/CHINS/OTHERS								
Previous Pending (+)	94	105	111	114	119	91	89	87
New Filing (+)	76	68	67	69	48	61	41	56
Resolved (-)	68	61	66	66	56	66	61	36
End Pending	105	111	114	119	91	89	87	111
Resolution Rate**	0.895	0.897	0.985	0.957	1.167	1.082	1.488	0.642
Juvenile Truancy								
Previous Pending (+)	326	315	508	477	821	1153	1271	1202
New Filing (+)	390	348	27	468	573	388	14	391
Resolved (-)	189	109	298	203	270	288	124	264
End Pending	315	508	477	821	1153	1271	1202	1329
Resolution Rate**	0.485	0.313	11.037	0.434	1.471	0.742	8.857	0.675
Juvenile Offender								
Previous Pending (+)	612	518	668	716	677	646	651	614
New Filing (+)	363	494	500	441	473	443	384	337
Resolved (-)	465	413	429	480	456	418	451	363
End Pending	518	668	716	677	646	651	614	581
Resolution Rate**	1.281	0.836	0.858	1.088	0.964	0.944	1.174	1.077
Criminal RALJ								
Previous Pending (+)	143	146	133	138	155	140	138	154
New Filing (+)	43	33	46	48	34	51	55	40
Resolved (-)	41	48	41	32	45	55	39	35
End Pending	146	133	138	155	140	138	154	156
Resolution Rate**	0.953	1.455	0.891	0.667	1.324	1.078	0.709	0.875
Civil RALJ								
Previous Pending (+)	38	29	34	30	28	27	26	24
New Filing (+)	8	16	9	14	14	16	10	15
Resolved (-)	15	11	14	17	14	18	12	8
End Pending	29	34	30	28	27	26	24	33
Resolution Rate**	1.875	0.688	1.556	1.214	1.000	1.125	1.200	0.533

* Reflecting all documents received by 01/15/2016.

** A value of "Resolution Rate" less than one indicates the resolution pace is slower than the filing pace.

Chart 4-A. Active Pending Caseload at Quarter End
Total Judicial Cases Only ("Matters Filed with Clerk" excluded)

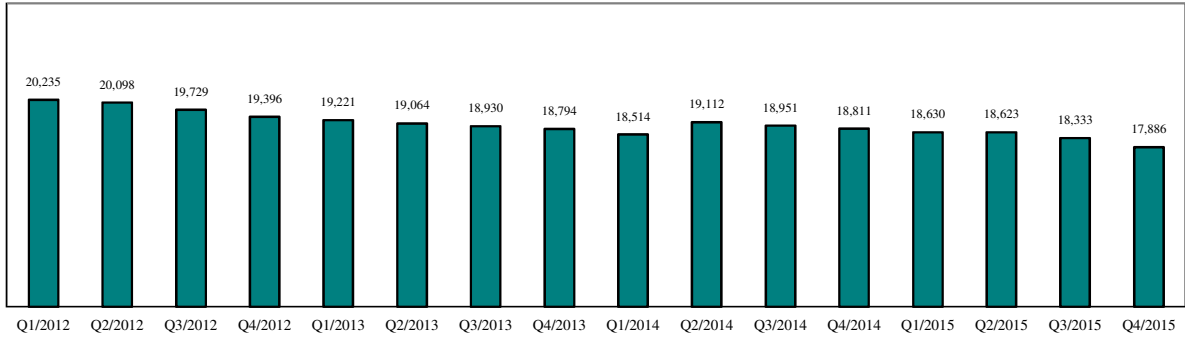


Chart 4-B. Active Pending Caseload at Quarter End: Domestic and General Civil Cases Only

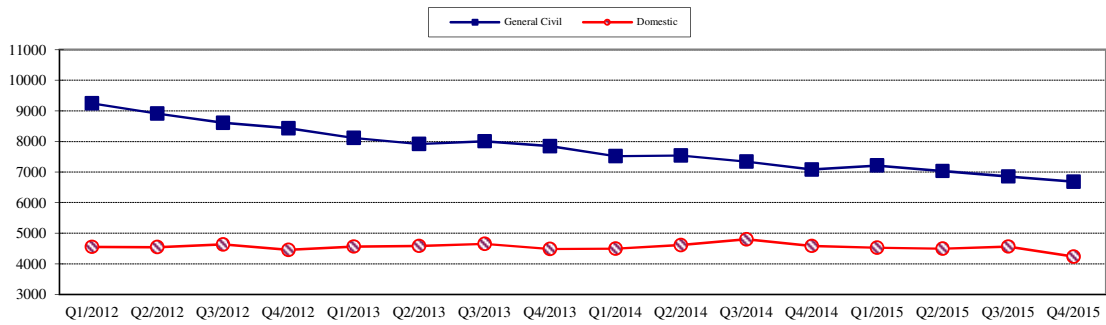
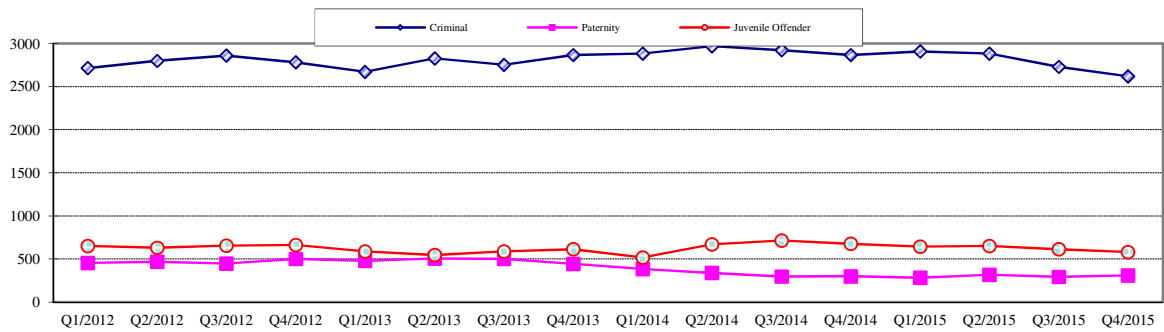


Chart 4-C. Active Pending Caseload at Quarter End:
Criminal, Juvenile Offender, Paternity and Dependency Cases Only



* Note: "General Civil" is specifically defined in this report. The category of "General Civil" does **not** include the following case types: domestic, probate, guardianship, adoption, paternity, mental illness, juvenile cases (dependency, at-risk youth, child-in-need of service), civil RALJ, and tax filings that don't require judicial resources ("matters filed with clerk"). Please check the Appendix for the cause codes in the "General Civil" category.

Table 5. Age of Pending Cases
King County Superior Court

Reporting Category	Age of Pending Cases and # of Cases in Each Age Interval							
	Q1/14	Q2/14	Q3/14	Q4/14	Q1/15	Q2/15	Q3/15	Q4/15*
Criminal (excl. RALJ): # of Cases	2883	2966	2923	2866	2908	2882	2727	2619
Age (days)								
Median (50 percentile)	110	106	120	119	96	97	106	110
95 percentile	750	754	785	794	525	549	572	610
# of Cases in Age Interval								
0 - 60 days (0 - 2 months)	966	896	854	835	1072	993	929	808
61 - 120 days (3 - 4 months)	581	743	616	612	627	689	572	586
121 - 180 days (5 - 6 months)	378	380	435	383	362	379	406	357
181 - 270 days (7 - 9 months)	328	326	377	337	308	321	331	337
> 270 days (> 9 months)	630	621	641	699	539	500	489	531
General Civil: # of Cases	7518	7542	7336	7079	7215	7036	6851	6691
Age (days)								
Median (50 percentile)	172	144	153	157	160	133	134	143
95 percentile	594	566	577	577	547	518	524	536
# of Cases in Age Interval								
0 - 120 days (0 - 4 months)	2984	3380	3142	2889	2959	3299	3184	2942
121 - 240 days (5 - 8 months)	1965	1586	1793	1784	1793	1534	1675	1688
241 - 360 days (9 - 12 months)	1239	1176	1035	1209	1299	1115	965	1144
361 - 540 days (13 - 18 months)	1089	941	923	760	789	775	726	590
541 - 720 days (19 - 24 months)	305	290	258	237	231	183	183	185
> 720 days (> 24 months)	206	169	185	200	144	130	118	142
Asbestos Cases (civil) ⁽¹⁾ : # of Cases	77	70	71	69	57	54	60	56
Age (days)								
Median (50 percentile)	351	372	371	374	253	329	271	332
95 percentile	778	851	897	916	1002	1093	1002	791
# of Cases in Age Interval								
0 - 120 days (0 - 4 months)	10	12	13	10	13	9	18	6
121 - 240 days (5 - 8 months)	15	10	11	14	11	9	9	17
241 - 360 days (9 - 12 months)	14	11	9	9	10	16	10	8
361 - 540 days (13 - 18 months)	25	22	14	14	10	9	16	16
541 - 720 days (19 - 24 months)	7	8	17	15	5	4	3	5
> 720 days (> 24 months)	6	7	7	7	8	7	4	4
Domestic: # of Cases	4499	4609	4802	4579	4520	4497	4562	4234
Age (days)								
Median (50 percentile)	130	109	112	129	126	117	115	128
95 percentile	557	548	548	593	538	559	563	623
# of Cases in Age Interval								
0 - 120 days (0 - 4 months)	2182	2486	2555	2168	2229	2322	2347	2020
121 - 240 days (5 - 8 months)	1241	1065	1221	1388	1206	1113	1228	1175
241 - 360 days (9 - 12 months)	595	601	533	561	661	643	529	604
361 - 540 days (13 - 18 months)	248	223	246	197	200	186	221	196
> 540 days (> 18 months)	233	234	247	265	224	233	237	239
Probate: # of Cases	850	861	905	908	511	562	581	580
Age (days)								
Median (50 percentile)	418	494	538	630	680	272	276	297
95 percentile	2085	2164	2241	2333	869	847	932	1084
# of Cases in Age Interval								
0 - 120 days (0 - 4 months)	173	153	140	116	172	165	139	149
121 - 240 days (5 - 8 months)	134	95	115	83	89	99	124	103
241 - 360 days (9 - 12 months)	82	104	66	82	72	77	59	86
361 - 540 days (13 - 18 months)	112	113	134	120	69	83	93	67
> 540 days (> 18 months)	349	396	450	497	109	138	166	175

Reflecting all documents received by 01/15/2016.

Table 5 (cont.). Age of Pending Cases

King County Superior Court

Reporting Category	Age of Pending Cases and # of Cases in Each Age Interval							
	Q1/14	Q2/14	Q3/14	Q4/14	Q1/15	Q2/15	Q3/15	Q4/15*
Guardianship: # of Cases	334	320	316	301	274	283	305	311
Age (days)								
Median (50 percentile)	83	91	100	86	64	71	65	70
95 percentile	580	657	744	798	544	520	541	409
# of Cases in Age Interval								
0 - 120 days (0 - 4 months)	198	181	172	166	175	196	198	215
121 - 240 days (5 - 8 months)	43	45	44	37	42	35	56	45
241 - 360 days (9 - 12 months)	30	25	32	28	24	17	18	31
361 - 540 days (13 - 18 months)	43	37	31	21	18	21	17	11
> 540 days (> 18 months)	20	32	37	49	15	14	16	9
Adoption: # of Cases	200	158	151	149	163	154	163	147
Age (days)								
Median (50 percentile)	159	120	127	120	110	106	133	155
95 percentile	1526	1562	832	924	848	939	938	1123
# of Cases in Age Interval								
0 - 120 days (0 - 4 months)	86	81	71	75	86	83	76	67
121 - 240 days (5 - 8 months)	38	25	35	25	31	27	40	24
241 - 360 days (9 - 12 months)	14	19	14	19	14	15	16	23
361 - 540 days (13 - 18 months)	24	9	14	13	16	16	12	13
> 540 days (> 18 months)	38	24	17	17	16	13	19	20
Paternity: # of Cases	384	338	295	300	282	316	293	310
Age (days)								
Median (50 percentile)	91	96	100	86	105	84	99	102
95 percentile	320	327	334	320	285	301	301	301
# of Cases in Age Interval								
0 - 120 days (0 - 4 months)	237	210	173	183	171	211	179	173
121 - 240 days (5 - 8 months)	112	92	88	77	85	76	89	95
241 - 360 days (9 - 12 months)	22	23	23	28	17	25	17	32
361 - 540 days (13 - 18 months)	9	10	5	7	7	4	8	10
> 540 days (> 18 months)	4	3	6	5	2	0	0	0
Mental Illness: # of Cases	119	137	120	121	143	162	122	90
Age (days)								
Median (50 percentile)	70	50	113	150	33	21	23	10
95 percentile	546	629	725	813	805	896	686	168
# of Cases in Age Interval								
0 - 120 days (0 - 4 months)	66	79	61	59	92	109	106	76
121 - 240 days (5 - 8 months)	10	13	11	9	9	16	4	11
> 240 days (> 8 months)	43	38	48	53	42	37	12	3
Juv Dependency (DEP): # of Cases	420	528	398	414	325	333	394	474
Age (days)								
Median (50 percentile)	83	83	117	106	99	76	106	90
95 percentile	509	515	672	762	386	432	517	562
# of Cases in Age Interval								
0 - 60 days (0 - 2 months)	173	201	112	132	119	125	122	180
61 - 120 days (3 - 4 months)	83	136	93	89	78	98	99	110
121 - 180 days (5 - 6 months)	57	55	76	37	53	32	65	49
181 - 270 days (7 - 9 months)	39	50	50	60	25	28	35	56
> 270 days (> 9 months)	65	83	66	95	50	50	73	79
Juv Termination (TER): # of Cases	119	132	161	225	175	169	194	164
Age (days)								
Median (50 percentile)	105	109	90	90	132	189	188	175
95 percentile	792	780	872	757	404	460	504	539
# of Cases in Age Interval								
0 - 60 days (0 - 2 months)	37	46	50	75	20	40	49	27
61 - 120 days (3 - 4 months)	26	21	47	64	48	11	36	27
121 - 180 days (5 - 6 months)	14	20	20	31	53	26	11	31
181 - 270 days (7 - 9 months)	19	12	16	23	31	49	24	20
> 270 days (> 9 months)	19	29	25	31	23	43	74	59

* Reflecting all documents received by 01/15/2016.

Table 5 (cont.). Age of Pending Cases
King County Superior Court

Reporting Category	Age of Pending Cases and # of Cases in Each Age Interval							
	Q1/14	Q2/14	Q3/14	Q4/14	Q1/15	Q2/15	Q3/15	Q4/15*
Juv. ARY/CHINS/OTHER: # of Cases	105	111	114	119	91	89	87	111
Age (days)								
Median (50 percentile)	162	222	238	248	170	261	353	207
95 percentile	2850	2941	3033	3125	3264	3355	3390	3482
# of Cases in Age Interval								
0 - 60 days (0 - 2 months)	29	32	35	24	28	22	20	23
61 - 120 days (3 - 4 months)	15	8	10	20	7	8	7	20
121 - 180 days (5 - 6 months)	11	12	8	9	11	4	9	11
181 - 270 days (7 - 9 months)	5	11	8	8	6	12	3	7
> 270 days (> 9 months)	45	48	53	58	39	43	48	50
Juvenile Truancy: # of Cases	315	508	477	821	1153	1271	1202	1329
Age (days)								
Median (50 percentile)	154	75	159	76	93	134	222	274
95 percentile	1041	837	940	995	1064	1148	1245	1324
# of Cases in Age Interval								
0 - 60 days (0 - 2 months)	105	190	25	321	447	179	6	277
61 - 120 days (3 - 4 months)	41	112	83	149	255	392	33	115
121 - 180 days (5 - 6 months)	17	24	176	1	216	266	279	9
181 - 270 days (7 - 9 months)	4	32	24	168	13	256	485	253
> 270 days (> 9 months)	148	150	169	182	222	178	399	675
Juvenile Offender: # of Cases	518	668	716	677	646	651	614	581
Age (days)								
Median (50 percentile)	97	75	92	90	76	90	97	120
95 percentile	581	620	545	627	418	439	449	507
# of Cases in Age Interval								
0 - 60 days (0 - 2 months)	180	281	232	253	268	239	216	162
61 - 120 days (3 - 4 months)	121	167	201	139	169	163	145	129
121 - 180 days (5 - 6 months)	63	70	103	90	73	87	93	93
181 - 270 days (7 - 9 months)	59	46	75	85	51	75	77	87
> 270 days (> 9 months)	95	104	105	110	85	87	83	110
Criminal RALJ: # of Cases	146	133	138	155	140	138	154	156
Age (days)								
Median (50 percentile)	147	169	154	146	158	133	136	171
95 percentile	400	410	499	591	451	506	581	673
# of Cases in Age Interval								
0 - 60 days (0 - 2 months)	31	23	31	33	31	35	34	28
61 - 120 days (3 - 4 months)	33	22	24	28	20	28	32	20
121 - 180 days (5 - 6 months)	23	29	20	30	29	17	33	40
181 - 270 days (7 - 9 months)	31	32	29	28	31	30	25	42
> 270 days (> 9 months)	28	27	34	36	29	28	30	26
Civil RALJ: # of Cases	29	34	30	28	27	26	24	33
Age (days)								
Median (50 percentile)	111	114	117	103	105	101	110	93
95 percentile	334	335	427	388	279	301	248	304
# of Cases in Age Interval								
0 - 60 days (0 - 2 months)	7	12	4	7	7	8	6	13
61 - 120 days (3 - 4 months)	10	9	11	9	8	9	7	7
121 - 180 days (5 - 6 months)	7	3	8	5	8	5	7	5
181 - 270 days (7 - 9 months)	2	8	3	5	2	1	3	5
> 270 days (> 9 months)	3	2	4	2	2	3	1	3

* Reflecting all documents received by 01/15/2016.

Table 6. Seattle vs. Regional Justice Center (KNT): Filing, Resolution, Pending Caseload (%)

King County Superior Court

	Q4/14		Q1/15		Q2/15		Q3/15		Q4/15	
	SEA	KNT	SEA	KNT	SEA	KNT	SEA	KNT	SEA	KNT
Filings Total <i>(excl. filings with clerk)</i>	63%	37%	64%	36%	63%	37%	64%	36%	63%	37%
Criminal (excl. RALJ)	52%	48%	52%	48%	56%	44%	53%	47%	55%	45%
General Civil (excl. RALJ)	55%	45%	57%	43%	55%	45%	57%	43%	55%	45%
Domestic	60%	40%	58%	42%	59%	41%	61%	39%	62%	38%
Probate	77%	23%	78%	22%	75%	25%	76%	24%	77%	23%
Guardianship	62%	38%	66%	34%	58%	42%	63%	37%	56%	44%
Adoption	76%	24%	78%	22%	70%	30%	70%	30%	70%	30%
Paternity	53%	47%	61%	39%	50%	50%	45%	55%	43%	57%
Mental Illness	100%	---	100%	---	100%	---	100%	---	100%	---
Juv. Dependency (DEP)	46%	54%	41%	59%	44%	56%	37%	63%	38%	62%
Juv. Termination (TER)	67%	33%	63%	37%	64%	36%	62%	38%	39%	61%
Juvenile ARY/CHINS/Other	42%	58%	31%	69%	43%	57%	44%	56%	48%	52%
Juvenile Truancy	53%	47%	46%	54%	51%	49%	71%	29%	48%	52%
Juvenile Offender	100%	---	100%	---	100%	---	100%	---	100%	---
Criminal RALJ	92%	8%	97%	3%	86%	14%	91%	9%	93%	7%
Civil RALJ	79%	21%	86%	14%	94%	6%	80%	20%	93%	7%
Resolution Total <i>(excl. filings with clerk)</i>	64%	36%	64%	36%	62%	38%	63%	37%	62%	38%
Criminal (excl. RALJ)	56%	44%	51%	49%	46%	54%	54%	46%	52%	48%
General Civil (excl. RALJ)	56%	44%	57%	43%	56%	44%	54%	46%	55%	44%
Domestic	61%	39%	63%	37%	59%	41%	59%	41%	60%	40%
Probate	77%	23%	78%	22%	75%	25%	77%	23%	76%	24%
Guardianship	59%	41%	60%	40%	62%	38%	64%	36%	59%	41%
Adoption	76%	24%	73%	27%	73%	27%	64%	36%	75%	25%
Paternity	40%	60%	48%	52%	50%	50%	52%	48%	46%	54%
Mental Illness	100%	---	100%	---	100%	---	100%	---	100%	---
Juv. Dependency (DEP)	41%	59%	55%	45%	45%	55%	41%	59%	38%	62%
Juv. Termination (TER)	64%	36%	66%	34%	68%	32%	63%	37%	49%	51%
Juvenile ARY/CHINS/Other	58%	42%	39%	61%	38%	62%	33%	67%	42%	58%
Juvenile Truancy	47%	53%	63%	37%	47%	53%	79%	21%	44%	56%
Juvenile Offender	100%	---	100%	---	100%	---	100%	---	100%	---
Criminal RALJ	94%	6%	89%	11%	93%	7%	97%	3%	97%	3%
Civil RALJ	88%	12%	86%	14%	89%	11%	100%	---	75%	25%
Pending Total <i>(excl. filings with clerk)</i>	65%	35%	63%	37%	63%	37%	64%	36%	64%	36%
Criminal (excl. RALJ)	49%	51%	51%	49%	55%	45%	54%	46%	57%	43%
General Civil (excl. RALJ)	68%	32%	67%	33%	66%	34%	68%	32%	68%	32%
Domestic	62%	32%	59%	41%	59%	41%	59%	41%	60%	40%
Probate	82%	18%	80%	20%	80%	20%	78%	22%	80%	20%
Guardianship	62%	38%	64%	36%	59%	41%	59%	41%	57%	43%
Adoption	74%	26%	76%	24%	72%	28%	76%	24%	71%	29%
Paternity	59%	41%	65%	35%	60%	40%	55%	45%	53%	47%
Mental Illness	100%	---	100%	---	100%	---	100%	---	100%	---
Juv. Dependency (DEP)	50%	50%	43%	57%	43%	57%	41%	59%	39%	61%
Juv. Termination (TER)	65%	35%	63%	37%	62%	38%	61%	39%	54%	46%
Juvenile ARY/CHINS/Other	64%	36%	60%	40%	64%	36%	64%	36%	60%	40%
Juvenile Truancy	59%	41%	51%	49%	52%	48%	51%	41%	51%	49%
Juvenile Offender	100%	---	100%	---	100%	---	100%	---	100%	---
Criminal RALJ	92%	8%	94%	6%	9%	9%	90%	10%	89%	11%
Civil RALJ	89%	11%	89%	11%	89%	11%	79%	21%	88%	12%

Reflecting all documents received by 01/15/2016.

Table 7. Quarterly Utilization of Pro Tem Judges/Commissioners ⁽¹⁾

Category	Q2/13	Q3/13	Q4/13	Q1/14	Q2/14	Q3/14	Q4/14	Q1/15	Q2/15	Q3/15	Q4/15*
Grand Total	1182	1391	2546	1450	1610	1510	1510	797	1226	1054	1733
Judge FTE Equivalent ⁽³⁾	2.6	3.1	5.7	3.2	3.6	3.4	3.4	1.8	2.7	2.3	3.9
By Work Type											
Pro Tem Judge					412	332	459	70	97	130	236
Pro Tem Commissioner					1028	1178	1051	709	1117	925	1497
Unspecified					170	0	0	17	13	0	0
By Location											
KCCH					532	655	916	317	454	346	882
MRJC					505	377	273	193	273	326	501
Juvenile					282	283	276	237	312	260	234
ITA					158	195	46	33	174	122	117
Other					133	0	0	17	13	0	0
By Calendar Type											
Criminal					128	75	262	13	51	112	185
Civil					74	32	22	0	0	0	0
Ex Parte					536	333	170	102	219	100	264
Family Law/Domestic					309	506	715	396	453	461	929
Dependency					217	119	133	183	225	240	172
Juvenile Offender					103	144	119	47	45	18	51
BECCA					30	20	13	7	42	3	11
ITA					158	195	46	33	174	122	117
Juvenile Drug Court					9	0	0	0	0	0	0
Family Treatment Court					6	0	0	0	0	0	0
Plea Calendar					42	71	8	0	0	0	0
Status/Non-Compliance					0	6	13	0	4	0	0
Other or Unspecified					0	10	13	17	13	0	0
By Reason											
Vacation Backfill					565	572	674	396	527	673	818
Medical Backfill					112	208	292	147	156	168	294
Duty Time					210	249	219	211	244	132	288
Conference Coverage					259	229	4	0	257	0	59
Congestion					168	80	259	8	30	69	126
Vacancy Coverage					263	109	0	0	0	0	5
Other					34	64	63	35	13	12	145

(1) This table is based on the time sheet for compensation

(2) Judge FTE Equivalent = # of hours / [7.5 hours/day * 20 days/month * 3 months] = # of hours/450.

Data for the most current quarter are incomplete at reporting time and will be updated in next quarterly report.

The statistics on Pro Tem judge/commissioner use provide information on the external help the court has obtained in order to handle the workload. The data are collected on the time sheet for compensation (therefore it does not include unpaid volunteering or visiting judges/commissioners). The database on Pro Tem judges/commissioners is managed by the Administrative Services Department (ASD) of King County Superior Court. The Pro Tem total hours presented in this section are provided quarterly by ASD.

Table 8. Family Law Activity

	2ND QTR, 2014		3RD QTR, 2014		4T QTR, 2014		1ST QTR, 2015		2ND QTR, 2015		3RD QTR, 2015		4TH QTR, 2015	
	HRGS	ORDS	HRGS	ORDS	HRGS	ORDS	HRGS	ORDS	HRGS	ORDS	HRGS	ORDS	HRGS	ORDS
SEATTLE														
FAM.LAW	463	2076	490	2127	490	2248	381	1881	383	1814	524	1833	510	1665
DAILY AVG.	8	34	8	35	8	37	6	31	6	30	9	30	8	27
PATERNITY	78	1309	61	1133	53	1270	47	1112	49	1035	112	964	117	923
DAILY AVG.	1	21	1	19	1	21	1	18	1	17	2	16	2	15
DOM. VIOL.	229	476	267	563	234	484	228	545	239	576	261	598	229	643
DAILY AVG.	4	8	4	9	4	8	4	9	4	9	4	10	4	11
	2ND QTR, 2014		3RD QTR, 2014		4T QTR, 2014		1ST QTR, 2015		2ND QTR, 2015		3RD QTR, 2015		4TH QTR, 2015	
	HRGS	HRGS	HRGS	ORDS	HRGS	ORDS	HRGS	ORDS	HRGS	ORDS	HRGS	ORDS	HRGS	ORDS
KENT														
FAM.LAW	458	1629	473	1569	380	1637	285	1414	363	1433	380	1400	403	1362
DAILY AVG.	8	27	8	26	6	27	5	23	6	23	6	23	7	22
PATERNITY	51	1008	58	910	60	960	37	730	41	757	57	764	54	734
DAILY AVG.	1	17	1	15	1	16	1	12	1	12	1	13	1	12
DOM. VIOL.	444	567	496	620	432	562	439	666	478	704	395	782	356	749
DAILY AVG.	7	9	8	10	7	9	7	11	8	12	6	13	6	12
	2ND QTR, 2014		3RD QTR, 2014		4T QTR, 2014		1ST QTR, 2015		2ND QTR, 2015		3RD QTR, 2015		4TH QTR, 2015	
	HRGS	ORDS	HRGS	ORDS	HRGS	ORDS	HRGS	ORDS	HRGS	ORDS	HRGS	ORDS	HRGS	ORDS
GRAND TOTAL	1723	7065	1845	6922	1649	7161	1417	6348	1553	6319	1729	6341	1669	6076
OVERALL DAILY AVG.	28	116	30	113	27	117	23	104	25	104	28	104	27	100

The statistics on family law and Ex Parte activity are obtained directly from SCOMIS using the appropriate docket codes.

Table 9. Ex Parte Activity

SEATTLE	4TH QTR, 2014		1ST QTR, 2015		2ND QTR, 2015		3RD QTR, 2015		4TH QTR, 2015	
	HRGS	ORDS	HRGS	ORDS	HRGS	ORDS	HRGS	ORDS	HRGS	ORDS
ADOP/PAT	97	303	52	208	86	284	69	256	102	321
DOM. VIOL.	3	350	1	360	2	402	2	446	9	417
OTH. CIVIL	256	457	281	528	245	467	262	551	237	560
DOMESTIC	585	1869	495	1798	423	1805	547	1893	594	2176
PROB/GDN	1283	2208	1330	2328	1318	2233	1259	2379	1226	2306
SUBTOTAL	2224	5187	2159	5222	2074	5191	2139	5525	2168	5780
DAILY AVG.	36	85	35	86	34	85	35	91	36	95

SEATTLE VIA CLERK (starting Jan 2009)	4TH QTR, 2014		1ST QTR, 2015		2ND QTR, 2015		3RD QTR, 2015		4TH QTR, 2015	
	----	ORDS	----	ORDS	----	ORDS	----	ORDS	----	ORDS
ADOP/PAT	----	110	----	93	----	100	----	117	----	81
DOM. VIOL.	----	1	----	5	----	8	----	3	----	2
OTH. CIVIL	----	4418	----	4436	----	4208	----	3800	----	3718
DOMESTIC	----	1431	----	1412	----	1410	----	1243	----	1343
PROB/GDN	----	799	----	849	----	909	----	947	----	909
SUBTOTAL	----	6759	----	6795	----	6635	----	6110	----	6053
DAILY AVG.	----	111	----	111	----	109	----	100	----	99

SEATTLE MAIL-IN	4TH QTR, 2014		1ST QTR, 2015		2ND QTR, 2015		3RD QTR, 2015		4TH QTR, 2015	
	----	ORDS	----	ORDS	----	ORDS	----	ORDS	----	ORDS
ADOP/PAT	----	0	----	0	----	2	----	1	----	0
DOM. VIOL.	----	1	----	0	----	0	----	0	----	0
OTH. CIVIL	----	186	----	95	----	158	----	205	----	151
DOMESTIC	----	32	----	43	----	36	----	40	----	29
PROB/GDN	----	58	----	77	----	66	----	110	----	78
SUBTOTAL	----	277	----	215	----	262	----	356	----	258
DAILY AVG.	----	5	----	4	----	4	----	6	----	4

Note: Ex Parte via Clerk started in January 2009.

Table 9 (cont). Ex Parte Activity

KENT	4TH QTR, 2014		1ST QTR, 2015		2ND QTR, 2015		3RD QTR, 2015		4TH QTR, 2015	
	HRGS	ORDS	HRGS	ORDS	HRGS	ORDS	HRGS	ORDS	HRGS	ORDS
ADOP/PAT	30	107	26	84	31	104	35	119	29	93
DOM. VIOL.	0	437	5	528	7	536	5	602	1	490
OTH. CIVIL	315	493	280	412	277	444	326	539	328	493
DOMESTIC	382	1392	321	1370	406	1550	398	1468	373	1336
PROB/GDN	397	737	413	791	460	852	399	935	452	906
SUBTOTAL	1124	3166	1045	3185	1181	3486	1163	3663	1183	3318
DAILY AVG.	18	52	17	52	19	57	19	60	19	54

KENT VIA CLERK (starting Jan 2009)	4TH QTR, 2014		1ST QTR, 2015		2ND QTR, 2015		3RD QTR, 2015		4TH QTR, 2015	
	----	ORDS	----	ORDS	----	ORDS	----	ORDS	----	ORDS
ADOP/PAT	----	40	----	25	----	58	----	34	----	37
DOM. VIOL.	----	0	----	3	----	4	----	3	----	3
OTH. CIVIL	----	2466	----	2556	----	2123	----	2430	----	2576
DOMESTIC	----	567	----	474	----	498	----	519	----	389
PROB/GDN	----	289	----	332	----	309	----	286	----	293
SUBTOTAL	----	3362	----	3390	----	2992	----	3272	----	3298
DAILY AVG.	----	55	----	56	----	49	----	54	----	54

KENT MAIL-IN	4TH QTR, 2014		1ST QTR, 2015		2ND QTR, 2015		3RD QTR, 2015		4TH QTR, 2015	
	----	ORDS	----	ORDS	----	ORDS	----	ORDS	----	ORDS
ADOP/PAT	----	1	----	1	----	0	----	2	----	1
DOM. VIOL.	----	0	----	0	----	0	----	0	----	0
OTH. CIVIL	----	37	----	34	----	54	----	89	----	46
DOMESTIC	----	8	----	18	----	14	----	21	----	11
PROB/GDN	----	29	----	28	----	43	----	30	----	31
SUBTOTAL	----	75	----	81	----	111	----	142	----	89
DAILY AVG.	----	1	----	1	----	2	----	2	----	1

ALL SEATTLE AND KENT	4TH QTR, 2014		1ST QTR, 2015		2ND QTR, 2015		3RD QTR, 2015		4TH QTR, 2015	
	HRGS	ORDS	HRGS	ORDS	HRGS	ORDS	HRGS	ORDS	HRGS	ORDS
GRAND TOTAL	3348	18827	3204	18889	3255	18678	3302	19069	3351	18797
DAILY AVERAGE	54.9	308.6	52.5	309.7	53.4	306.2	54.1	312.6	54.9	308.1

Note: Ex Parte via Clerk started in January 2009.

Appendix Glossary and Definition

General Definition

Active Status

A case is active if it is not on suspense status (see Suspense Status).

Case

A case is defined as a filing with an assigned case number (or a case number plus a defendant connection code in pre-1990 criminal filings).

Completion

A case is completed when dispositive document is filed with the court following resolution.

Jury Trial

A hearing is reported as a jury trial if the jury is impaneled.

New Case

A new case is an original filing with new case number assigned.

Non-Jury Trial

A hearing is reported as a non-jury trial if an opening statement is made, waived, or reserved. A juvenile fact finding hearings is reported as a non-jury trial.

Pending Case

A case is defined as pending if it is unresolved and active (not in suspense).

Reactivated Case

A case returns to active status from suspense status during the reporting period.

Re-opened Cases

A case is re-opened if it has been previously completed but returns to the court for supplement or change of the original case resolution. A re-opened case does not have a new case number. Only resolved cases can be "re-opened". (Note: measurement not available as of July 1996. SCOMIS capacity may exist after conversion to DB2 in the future).

Resolution

A case is resolved if all issues in the complaint are fully adjudicated.

Suspended Case

A case is placed in suspense status from active status during the reporting period.

Suspense Status

A case is on suspense status if it is on warrant, appeal, stay, mediation, arbitration ("Deferred Prosecution" is not a suspense status, but is treated as a resolution).

Trial

A hearing set before a judge or jury in which all the issues in the case are meant to be resolved. A trial normally includes opening statements to the court or jury stating what the evidence will show, introduction of witnesses and exhibits for direct and cross examination, final arguments to the court or jury in which counsel argue both the evidence and the law, and judgment by the court or jury stating what the facts of the case are and what law applies to the facts. In a jury case, it also includes the selection of the jury. A trial can be held

for one or more cases. A single trial may be held to adjudicate more than one case (as defined above).

Post-resolution Modifications

In this report, we also report the post-resolution modifications for case type 3 (domestic) and 5 (paternity). These numbers are based on the tracks (DMOD and DTBA) opened after the original resolution date (i.e., if the track beginning date is after the resolution date).

Section I. Filing Activity

Additional Filings with Clerk

Filings with clerk without assigning a SCOMIS case number. This reporting category consists of search warrants, wire taps, extradition, oaths and orders pertaining to Pro Tem judge/commissioners/Court

Reporters/Bailiffs, and other "non-case" filings as recorded under 12050 system.

Annual Filings

Total number of new case filings during the calendar year (January 1 to December 31).

Adoption Cases

This reporting category includes the following "cause-of-action" codes within SCOMIS case type 5:

- Relinquishment (REL)
- Termination of Parent/Child Relationship (TER)
- Adoption (ADP)
- Miscellaneous (MSC)
- Name Change - Confidential (CHN)
- Initial Pre-Placement Report Filed with Clerk (PPR)

General Civil Cases

"General Civil" cases include all civil matters other than Domestic, Probate, Guardianship, Adoption, Paternity and appeals from courts of limited jurisdiction and "Matters Filed with Clerk". "General civil" cases include small claims as identified by the "Small Claim Track". This reporting category includes the following "cause-of-action" codes within SCOMIS case type 2:

- Administrative Law Review (ALR)
- Change of Name - Non-Confidential (CHN)
- Collection (COL)
- Commercial (COM)
- Condemnation (CON)
- Domestic Violence Protection (DVP)
- Emancipation of Minor (EOM)
- Foreclosure (FOR)
- Civil Harassment (HAR)
- Injunction (INJ)
- Other Malpractice (MAL)
- Medical Malpractice (MED)
- Meretricious Relationship (MER)
- Malicious Harassment (MHA)
- Miscellaneous (MSC)
- Minor Settlement (MST) - as of 10/1/96, under Guardianship
- Petition of Civil Commitment- Sexual Predator (PCC)
- Property Fairness (PFA)

- Personal Injury (PIN)
- Property Damage (PRP)
- Quiet Title (QTI)
- Small Claims (LCA/LCI on "Small Claim Track")
- Seizure of Property from the Commission of a Crime (SPC)
- Seizure of Property Resulting from a Crime (SPR)
- Tort Motor Vehicle (TMV)
- Tort Other (TTO)
- Unlawful Detainer (UND)
- Wrongful Death (WDE)
- Writ of Habeas Corpus (WHC)
- Miscellaneous Writ (WMW)
- Writ of Mandamus (WRM)
- Writ of Restitution (WRR)
- Writ of Review (WRV)

Civil RALJ Cases

Civil appeals from courts of limited jurisdiction (excluding small claims as identified by the "Small Claim Track"). Civil RALJ includes the following "cause-of-action" reporting categories:

- Lower Court Appeal - Civil and "Not a Small Claim"
- Lower Court Appeal - Infraction and "Not a Small Claim"

Note: The Civil RALJ cases are determined based on both SCOMIS "cause-of-action" code (LCA and LCI) within SCOMIS case type 2 and the "Small Claim Track".

Criminal Cases (excl. RALJ)

Adult criminal cases, excluding appeals from courts of limited jurisdiction. This reporting category includes the following crime categories within SCOMIS case type 1:

- Homicide
- Sex Crime
- Robbery
- Assault
- Theft/Burglary
- Motor Vehicle Theft
- Controlled Substance
- Other Felony
- Others (Misdemeanor, Non-charge Case)

Criminal RALJ Cases

Criminal appeals from courts of limited jurisdiction. This reporting category includes all SCOMIS case type 1 cases that have an appeal from lower court field of "Yes".

Domestic Cases

This reporting category includes the following "cause-of-action" codes within SCOMIS case type 3:

- Annulment – Invalidity (INV)
- Child Custody (CUS)
- Dissolution With Children Of The Marriage (DIC)
- Dissolution With No Children Of The Marriage (DIN)
- Dissolution of Domestic Partnership – With Children (DPC)
- Dissolution of Domestic Partnership – With No Children (DPN)
- Foreign Judgment (FJU)
- Invalidity – Domestic Partnership (INP)
- Mandatory Wage Assignment (MWA)
- Miscellaneous (MSC)
- Modification (MOD)
- Modification – Support Only (MDS)
- Out-Of-State Child Custody (OSC)
- Parenting Plan / Child Support (PPS)
- Reciprocal, Respondent In-County (RIC)
- Reciprocal, Respondent Out-of-County (ROC)
- Legal Separation (SEP)
- Legal Separation – Domestic Partnership (SPD)

Guardianship Cases

This reporting category includes the following "cause-of-action" codes within SCOMIS case type 4:

- Guardianship/Estate (G/E)
- Guardianship (GND)
- Limited Guardianship (LGD)
- Minor Settlement (MST)

Juvenile ARY/CHINS Cases

Juvenile dependency cases, excluding truancy cases and DEP cause code. This reporting category includes following "cause-of-action" codes within SCOMIS case type 7:

- Alternative Residential Placement (ARP)
- At-Risk Youth (ARY)
- Child in Need of Service (CNS)

Juvenile Dependency Cases

This reporting category includes following "cause-of-action" codes within SCOMIS case type 7:

- Dependency (DEP)
- Termination (TER)
- Developmental Disability (DDP)
- Guardianship Foster Children (GFC)
- Reinstatement of Parental Rights (RPR)
- Extension of Foster Care (EFC)
- Relative Visitation (RVS)

Juvenile Offender Cases

This reporting category includes the following crime categories in SCOMIS case type 8:

- Homicide
- Sex Crime
- Robbery
- Assault
- Theft/Burglary
- Motor Vehicle Theft
- Controlled Substance
- Other Felony
- Others (Misdemeanor, Non-charge Case)

Juvenile Truancy Cases

Mandatory truancy filings started on 10/01/1995. This reporting category includes the following "cause-of-action" code within SCOMIS case type 7:

- Truancy (TRU)

Matters Filed with Clerk

Filings with clerk (case numbers assigned), but requiring little or no judicial action. This reporting category includes the following "cause-of-action" codes within SCOMIS case type 2:

- Abstract of Judgment (ABJ)
- Foreign Judgment (FJU)
- Tax Warrant (TAX)
- Transcripts of Judgment (TRJ)

Mental Illness Cases

This reporting category includes all "cause-of-action" codes within SCOMIS case type 6:

- Alcoholic Treatment (ALT)
- Mental Illness - Adult (MI)
- Mental Illness - Juvenile (MIJ)

Paternity Cases

This reporting category includes the following "cause-of-action" codes within SCOMIS case type 5:

- Modification (MOD)
- Paternity (PAT)
- Paternity/URES/UISA (PUR)

Probate Cases

This reporting category includes the following "cause-of-action" codes within SCOMIS case type 4:

- Absentee (ABS)
- Disclaimer (DSC)
- Estate (EST)
- Foreign Will (FNW)
- Miscellaneous (MSC)
- Non-Probate Notice to Creditors (NNC)
- Will Only (WLL)

Total Cases

New cases with case numbers assigned, excluding “Matters Filed with Clerk” and “Additional Filings with Clerk”.

Year-to-Date Filings

Total number of new filings since the beginning of calendar year (January 1) to the end of reporting period.

Section II. Resolution Category

Adoption - Resolved by Trial

Court Decision after Non-Jury Trial (CDAT)

Adoption - Uncontested

Consolidated Case (CONS)
Uncontested Resolution (UNDS)

Adoption - Settlement/Dismissal

Closed by Court Order after a Hearing (CLCO)
Dismissal without Trial (DSM)
Dismissal after Non-Jury Trial Commencement (DAT)
Settled after Non-Jury Trial Commencement (SAT)
Settled by Parties/Agreed Judgment (STPR)

Adoption - Closure by Clerk

Dismissal/Closure by Clerk (DSCK)

Adoption - Others

Change of Venue/Jurisdiction (CHV)
Other Non-specified Resolutions

Civil - Resolved by Jury Trial

Jury Verdict after Trial (JVAT)

Civil - Resolved by Non-Jury Trial

Court Decision after Non-Jury Trial (CDAT)

Civil - Summary Judgment

Summary Judgment (SMJG)

Civil - Default/Uncontested

Consolidated Case (CONS)
Default Judgment (DFJG)
Uncontested Resolution (UNDS)

Civil - Arbitration

Settle by Arbitration (ARBA)

Civil - Settlement/Dismissal

Closed by Court Order after a Hearing (CLCO)
Dismissal after Non-Jury Trial (DAT)
Dismissal after Jury Trial (DJT)
Dismissal (DSM)
Settled after Non-Jury Trial Commencement (SAT)
Settled after Jury Trial Commencement (SJT)
Settled by Parties/Agreed Judgment (STPR)

Civil - Closure by Clerk

Dismissal/Closure by Clerk (DSCK)

Civil - Others

Transferred to Federal bankruptcy Court (BANK)
Change of Venue/Jurisdiction (CHV)
Other Non-specified Resolutions

Civil RALJ - RALJ Decision

Court Decision to Affirm Appeal/review (CDTA)
Court Decision to Modify Appeal/Review (CDTM)
Court Decision to Reverse Appeal/review (CDTR)

Civil RALJ - Dismissal

Dismissal and Remand of Appeal/Review (DSRM)

Civil RALJ - Others

Other Non-specified Resolutions

Comparison with Court Standard

Percentage of cases actually falling within the Court’s standard benchmark.

Court Standard

Benchmarks set by a state advisory committee and adopted by the court indicating percentage of cases to be resolved at certain age (in months, 1 month = 30 days as used in the Advisory Case Processing Time Standard as published in the Court Rule).

Court standard is based on timelines as suggested by State Advisory Committee. For a case type with no time standard, the standard for a similar case type is adopted if appropriate.

Criminal: 90% by 4 months, 98% by 6 months, 100% by 9 months.

Civil: 90% by 12 months, 98% by 18 months, 100% by 24 months.

Domestic: 90% by 8 months, 98% by 10 months, 100% by 14 months.

Probate/Guardianship: 90% by 8 months, 98% by 18 months, 100% by 36 months.

Adoption/Paternity: 90% by 8 months, 98% by 10 months, 100% by 14 months.

Mental Illness/Juvenile Truancy: No standard yet.

Juvenile Dependency: 90% by 8 months, 98% by 10 months, 100% by 14 months.

Juvenile Offender: 90% by 4 months, 98% by 6 months, 100% by 9 months.

Criminal RALJ/Civil RALJ: 90% by 4 months, 98% by 5 months, 100% by 6 months.

Criminal - Resolved by Jury Trial

Acquittal by Jury (AQJV)
Convicted - Jury Verdict after Trial (CVJV)

Criminal - Resolved by Non-Jury Trial

Acquittal by Court (AQCT)
Convicted - Court Decision after Non-Jury Trial (CVCT)

Criminal - Resolved by Guilty Plea

Guilty Plea (GP)
Guilty Plea after Non-Jury Trial Commencement (GPAT)
Guilty Plea after Jury Trial Commencement (GPJT)

Criminal - Dismissal

Dismissal after Non-Jury Trial Commencement (DAT)
Dismissal after Jury Trial Commencement (DJT)
Dismissal (DSM)

Criminal - Others

Change of Venue (CHV)
Consolidated Case (CONS)
Continued Order of Prosecution with Completion (CTOP)*
Deferred Prosecution (DFPD)
Dismissal/Closure by Clerk (DSCK)
Governor’s warrant (GW)
Not Guilty by Reason of Insanity (NGRI)
Uncontested Resolution (UNDS)
Waiver of Extradition (WE)
Other Non-specified Resolutions

* Note: For adult criminal cases, “CTOP” does not necessarily constitute resolution. An adult criminal case with a “CTOP” as resolution code is counted as a resolved case only if a completion code exists along with the “CTOP”. If the resolution code is CTOP and there is no completion code, then the case is treated as unresolved. The primary reason for combining “CTOP” with a completion code is to determine resolution for drug court cases (CTOP is entered in the

SCOMIS resolution field as soon as a defendant enrolls in Drug Court). This rule on “CTOP” applies to adult criminal cases only.

Criminal RALJ - RALJ Decision

Court Decision to Affirm Appeal/review (CDTA)
Court Decision to Modify Appeal/Review (CDTM)
Court Decision to Reverse Appeal/review (CDTR)

Criminal RALJ - Dismissal

Dismissal and Remand of Appeal/Review (DSRM)

Criminal RALJ - Others

Other Non-specified Resolutions

Domestic - Resolved by Trial

Court Decision after Non-Jury Trial (CDAT)

Domestic - Default/Uncontested

Consolidated Case (CONS)
Default Judgment (DFJG)
Uncontested Resolution (UNDS)

Domestic - Settlement/Dismissal

Settled by Arbitration (ARBA)
Closed by Court Order after a Hearing (CLCO)
Dismissal after Non-Jury Trial Commencement (DAT)
Dismissal (DSM)
Settled after Non-Jury Trial Commencement (SAT)
Settled by Parties/Agreed Judgment (STPR)

Domestic - Closure by Clerk

Dismissal/Closure by Clerk (DSCK)

Domestic - Others

Change of Venue/Jurisdiction (CHV)
Summary Judgment (SMJG)
Other Non-specified Resolutions

Guardianship - Guardian Appointed

Guardian Appointed (PRGA)

Guardianship - Dismissal

Closed by Court Order after a Hearing (CLCO)
Dismissal (DSM)

Guardianship - Closure by Clerk

Dismissal/Closure by Clerk (DSCK)

Guardianship - Others

Change of Venue/Jurisdiction (CHV)
Consolidated Case (CONS)
Uncontested Resolution (UNDS)
Other Non-specified Resolutions

Juvenile Dependency - Finding of Dependency

Approved Petition (APP)

Juvenile Dependency - Dismissal

Dismissal (DSM)

Juvenile Dependency - Others

Change of Venue/Jurisdiction (CHV)
Consolidated Case (CONS)
Transfer of Jurisdiction (TRJU)
Other Non-specified Resolutions

Juvenile Offender - Resolved by Trial

Acquittal by Court (AQCT)
Convicted - Court Decision after Adjudictory Hearing (CVCT)

Juvenile Offender - Resolved by Guilty Plea

Guilty Plea before Adjudictory Hearing Commencement (GP)
Guilty Plea after Adjudictory Hearing Commencement (GPAT)

Juvenile Offender - Dismissal

Dismissal after Adjudictory Hearing Commencement (DAT)
Dismissal (DSM)

Juvenile Offender - Others

Change of venue (CHV)
Dismissal/Closure by Clerk (DSCK)
Consolidated Case (CONS)

Continued Prosecution (CTOP)
Decline of Jurisdiction (DECL)
Uncontested Resolution (UNDS)
Other Non-specified Resolutions

Juvenile Truancy - Finding of Truancy

Approved Petition (APP)

Juvenile Truancy - Dismissal

Dismissal (DSM)

Juvenile Truancy - Others

Change of Venue (CHV)
Consolidated Case (CONS)
Transfer of Jurisdiction (TRJU)
Other Non-specified Resolutions

Mental Illness - Court Decision to Commit

Court Decision to Commit (CDTC)

Mental Illness - Closed by Court

Closed by Court (CLCO)

Mental Illness - Dismissal

Dismissal (DSM)

Mental Illness - Others

Change of Venue/Jurisdiction (CHV)
Uncontested Resolution (UNDS)
Other Non-specified Resolutions

Paternity - Resolved by Trial

Court Decision after Non-Jury Trial (CDAT)

Paternity - Summary Judgment

Summary Judgment (SMJG)

Paternity - Default/Uncontested

Consolidated Case (CONS)
Default Judgment (DFJG)
Uncontested Resolution (UNDS)

Paternity - Settlement/Dismissal

Settled by Arbitration (ARBA)
Closed by Court Order after a Hearing (CLCO)
Dismissal after Non-Jury Trial Commencement (DAT)
Dismissal (DSM)
Settled after Non-Jury Trial Commencement (SAT)
Settled by Partied/Agreed Judgment (STPR)

Paternity - Closure by Clerk

Dismissal/Closure by Clerk (DSCK)

Paternity - Others

Change of Venue (CHV)
Other Non-specified Resolutions

Percentile

Percent of cases resolved at a given age. For example, if resolved cases had a 98 percentile of 12 months, it means that 98% of the cases were resolved within the age of 12 months, or conversely 2% of the cases were resolved after 12 months, not counting suspense time.

Probate - Personal Representative Appointed

Non-Intervention Probate (NIP)
Personal Representative Appointed (PRGA)

Probate - Dismissal

Closed by Court Order after a Hearing (CLCO)
Dismissal (DSM)

Probate - Closure by Clerk

Dismissal/Closure by Clerk (DSCK)

Probate - Others

Change of Venue (CHV)
Consolidated Case (CONS)
Uncontested Resolution (UNDS)
Other Non-specified Resolutions

Backlogged Cases

Active pending cases with an age exceeding the court-adopted time standard for each specific case type (recommended by the State Advisory Committee, see definition for *Court Standard*).

Section III. Pending Caseload

Adjustment

Adjustment made because of vacating of resolutions, or change in suspense status between two reporting period.

End Pending

Total number of pending cases at the end of reporting period.

Previous Pending

Total number of pending cases at the beginning of reporting period.

Resolution Rate

Resolution rate is defined as the ratio of number of resolutions to number of new filings (i.e., number of resolutions divided by number of new filings) during the reporting period. The resolution rate measures the relative pace of resolution in relation to the pace of new filings. A resolution rate of greater than 1 indicates the number of resolutions exceeds the number of new filings.

On-review Status

Cases that have been resolved (post-resolution) but still need court resources for periodic review and other remaining outstanding issues.

Probate (EST), Paternity (PAT) and Dependency (DEP): Resolved and not completed (paternity or dependency established, but outstanding issues remain).

Guardianship (GDN,LGD,G/E): Resolved and on tracks of G1,G2,G3,GE or GD; Minor Settlement (MST): Resolved with a future hearing date.

Section IV. Age of Pending Cases

Case Age

The age of a case is the time (number of days) since the filing date, less any suspense time if applicable.

Median Age

The median age is the time that 50% of the cases are under and 50% are above the given age. For example, if pending cases have a median age of 12 months, it means that 50% of the pending cases are within the age of 12 months, and 50% of pending cases are over 12 months. The median age is more robust to cases with extreme age values than the average age.

Suspense Time

Time (days) that a case is on suspense status before its resolution. If a case has more than one suspense between filing and resolution, the suspense time is the total from all suspenses. Time on suspense status after resolution (e.g., appeals) is not counted.