

King County Superior Court
Quarterly Statistical Report

First Quarter 2016

Department of Judicial Administration
Prepared by: Shiquan Liao, Ph.D., Statistician

Release Date: April 20, 2016

Report #: QTR-2016-1

Table 1. Year-to-Date Filing Activity

King County Superior Court

Reporting Category	Year-to-Date and Annual Filing Activity ⁽¹⁾					2014-2015 change (+ means "increase")		% of 2015 Total Filing ⁽²⁾
	2012	2013	2014	2015	2016	Cases	Percentage	
Total (incl. RALJ)								
Year-to-Date Filing	14229	13636	12743	13257	12992	-265	-2.0%	
Annual Filing	54834	52755	52224	51652				
Criminal (excl. RALJ)								
Year-to-Date Filing	1538	1490	1587	1682	1647	-35	-2.1%	12.7%
Annual Filing	5942	6045	6213	6237				
General Civil (excl. Asbestos)								
Year-to-Date Filing	6400	5834	5122	5213	5110	-103	-2.0%	39.3%
Annual Filing	24477	22347	21378	21181				
Asbestos Cases (civil) ⁽³⁾								
Year-to-Date Filing	7	19	9	9	8	-1	-11.1%	0.1%
Annual Filing	36	63	40	36				
Domestic								
Year-to-Date Filing	1961	2011	1903	1904	1897	-7	-0.4%	14.6%
Annual Filing	7678	7897	7921	7559				
Probate								
Year-to-Date Filing	1405	1606	1501	1652	1586	-66	-4.0%	12.2%
Annual Filing	5492	5844	5920	6002				
Guardianship								
Year-to-Date Filing	204	210	245	221	245	+24	+10.9%	1.9%
Annual Filing	879	884	928	969				
Adoption								
Year-to-Date Filing	119	115	121	112	130	+18	+16.7%	1.0%
Annual Filing	511	483	470	460				
Paternity								
Year-to-Date Filing	334	246	197	146	139	-7	-4.8%	1.1%
Annual Filing	1161	931	702	650				
Mental Illness								
Year-to-Date Filing	888	820	876	962	1020	+58	+6.1%	7.9%
Annual Filing	3591	3678	3852	4004				
Juvenile Dependency (DEP)								
Year-to-Date Filing	207	201	246	171	210	+39	+22.9%	1.6%
Annual Filing	853	893	940	848				
Juvenile Termination (TER)								
Year-to-Date Filing	49	45	58	43	44	+1	+2.3%	0.3%
Annual Filing	200	209	325	214				
Juvenile ARY/CHINS/OTHERS								
Year-to-Date Filing	70	55	76	48	63	+15	+31.3%	0.5%
Annual Filing	242	168	285	217				
Juvenile Truancy								
Year-to-Date Filing	451	533	390	573	532	-41	-7.2%	4.1%
Annual Filing	1271	1236	1233	1369				
Juvenile Offender								
Year-to-Date Filing	538	405	363	473	307	-166	-35.1%	2.4%
Annual Filing	2249	1808	1802	1649				
Criminal RALJ								
Year-to-Date Filing	47	40	43	34	40	+6	+17.6%	0.3%
Annual Filing	192	181	172	180				
Civil RALJ								
Year-to-Date Filing	12	6	8	14	14	0	0.0%	0.1%
Annual Filing	63	53	47	57				
Matters Filed with Clerk ⁽⁴⁾								
Year-to-Date Filing	3825	3698	3818	2405	2345	-60	-2.5%	
Annual Filing	15046	13763	12240	9581				

(1) New filings only (based on filing date), excluding re-opened cases (unable to count), and reflecting all documents received by 04/15/2016.

(2) New filings of each reporting category as percentage of "Year-to-Date Filing".

(3) "Matters Filed with Clerk" and "Additional Filings with Clerk" are not included in the "Total".

Chart 1-A. Quarterly Filing Activity
Total Judicial Cases Only ("Matters Filed with Clerk" excluded)

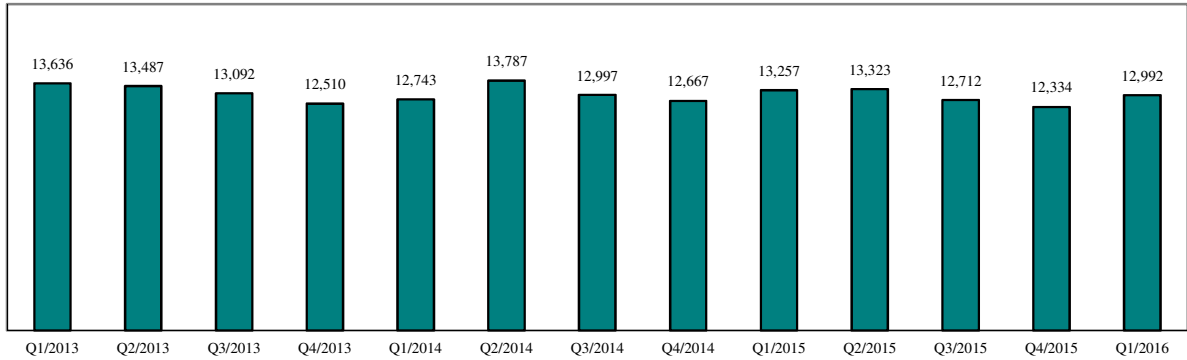
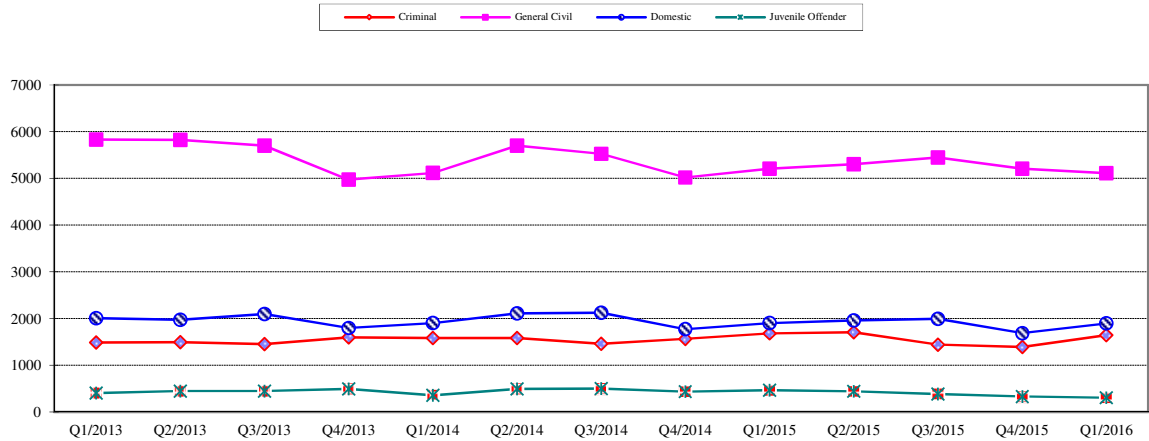


Chart 1-B. Quarterly Filings: Criminal, Domestic, General Civil and Juvenile Offender Cases Only



* Note: "General Civil" is specifically defined in this report. The category of "General Civil" does **not** include the following case types: domestic, probate, guardianship, adoption, paternity, mental illness, juvenile cases (dependency, at-risk youth, child-in-need of service, civil RALJ, and tax filings that don't require judicial resources ("matters filed with clerk"). Please check the Appendix for the cause codes in the "General Civil" category.

Table 1-A. Post-Resolution Modifications (Domestic and Paternity Cases)

Based on Tracks Opened After Original Resolution Date

		2014Q1			2014Q2			2014Q3			2014Q4			Year 2014		
Location	Case Type	DMOD	DTBA	Total	DMOD	DTBA	Total	DMOD	DTBA	Total	DMOD	DTBA	Total	DMOD	DTBA	Total
KNT	Domestic	144	43	187	172	66	238	183	46	229	164	42	206	663	197	860
	Paternity	15	4	19	11	7	18	13	4	17	16	6	22	55	21	76
KNT Total		159	47	206	183	73	256	196	50	246	180	48	228	718	218	936
SEA	Domestic	155	59	214	155	104	259	170	76	246	154	57	211	634	296	930
	Paternity	14	6	20	8	10	18	15	11	26	9	4	13	46	31	77
SEA Total		169	65	234	163	114	277	185	87	272	163	61	224	680	327	1007
KNT/SEA Total		328	112	440	346	187	533	381	137	518	343	109	452	1398	545	1943
		2015Q1			2015Q2			2015Q3			2015Q4			Year 2015		
Location	Case Type	DMOD	DTBA	Total	DMOD	DTBA	Total	DMOD	DTBA	Total	DMOD	DTBA	Total	DMOD	DTBA	Total
KNT	Domestic	166	37	203	188	49	237	168	31	199	166	32	198	688	149	837
	Paternity	14	4	18	18	8	26	15	3	18	8	6	14	55	21	76
KNT Total		180	41	221	206	57	263	183	34	217	174	38	212	743	170	913
SEA	Domestic	150	56	206	145	85	230	171	44	215	146	49	195	612	234	846
	Paternity	8	8	16	8	7	15	7	8	15	5	4	9	28	27	55
SEA Total		158	64	222	153	92	245	178	52	230	151	53	204	640	261	901
KNT/SEA Total		338	105	443	359	149	508	361	86	447	325	91	416	1383	431	1814
		2016Q1			2016Q2			2016Q3			2016Q4			Year 2016		
Location	Case Type	DMOD	DTBA	Total	DMOD	DTBA	Total	DMOD	DTBA	Total	DMOD	DTBA	Total	DMOD	DTBA	Total
KNT	Domestic	174	29	203										174	29	203
	Paternity	16	6	22										16	6	22
KNT Total		190	35	225										190	35	225
SEA	Domestic	154	71	225										154	71	225
	Paternity	6	9	15										6	9	15
SEA Total		160	80	240										160	80	240
KNT/SEA Total		350	115	465										350	115	465

* DMOD = parenting plan modification track; DTBA = support modification track.

Table 2. Number of Cases Resolved and Resolution Category (%)

King County Superior Court

Reporting Category	Q2/14	Q3/14	Q4/14	Q1/15	Q2/15	Q3/15	Q4/15	Q1/16*
Total Resolutions (excl. "Matters Filed with Clerk")	13573	13855	13195	13228	15990	13497	13206	13113
Criminal (excl. RALJ): # Resolved	1440	1540	1535	1507	1731	1635	1532	1529
Resolved by Jury Trial	3.8%	3.2%	3.4%	3.6%	2.8%	2.6%	3.3%	4.3%
Resolved by Non-Jury Trial	1.3%	1.0%	2.0%	0.7%	0.2%	0.5%	0.5%	1.1%
Resolved by Guilty Plea	77.2%	80.6%	80.4%	78.0%	80.2%	81.7%	80.6%	80.1%
Dismissal	17.4%	15.0%	13.8%	17.7%	16.7%	14.7%	15.3%	13.8%
Others	0.2%	0.3%	0.5%	0.1%	0.2%	0.4%	0.4%	0.2%
General Civil: # Resolved	6055	6111	5650	5718	5639	5933	5853	5435
Resolved by Jury Trial	0.4%	0.4%	0.6%	0.7%	0.5%	0.5%	0.5%	0.6%
Resolved by Non-Jury Trial	0.3%	0.3%	0.4%	0.2%	0.6%	0.5%	0.3%	0.3%
Summary Judgment	2.5%	2.2%	2.2%	1.5%	2.1%	1.6%	1.8%	2.0%
Default/ Uncontested	37.9%	41.3%	37.4%	40.1%	39.1%	41.0%	42.1%	38.1%
Arbitration	2.8%	2.3%	2.7%	3.0%	3.0%	2.9%	2.7%	3.1%
Settlement/Dismissal	50.6%	49.7%	53.0%	51.1%	51.8%	50.4%	48.3%	52.6%
Closure by Clerk	2.9%	2.3%	2.3%	2.4%	2.1%	2.2%	3.6%	2.6%
Others	2.7%	1.5%	1.4%	0.9%	0.9%	0.8%	0.7%	0.8%
Asbestos Cases (civil): # Resolved	13	14	14	25	9	12	10	9
Resolved by Jury Trial	0.0%	7.1%	0.0%	0.0%	0.0%	0.0%	0.0%	11.1%
Resolved by Non-Jury Trial	0.0%	0.0%	0.0%	0.0%	0.0%	0.0%	0.0%	0.0%
Summary Judgment	7.7%	7.1%	14.3%	4.0%	0.0%	0.0%	50.0%	22.2%
Default/ Uncontested	0.0%	14.3%	14.3%	0.0%	11.1%	8.3%	0.0%	0.0%
Arbitration	0.0%	0.0%	0.0%	0.0%	0.0%	0.0%	0.0%	0.0%
Settlement/Dismissal	69.2%	64.3%	57.1%	64.0%	55.6%	66.7%	20.0%	55.6%
Closure by Clerk	23.1%	7.1%	14.3%	28.0%	33.3%	25.0%	30.0%	11.1%
Others	0.0%	0.0%	0.0%	4.0%	0.0%	0.0%	0.0%	0.0%
Domestic: # Resolved	2022	1963	1994	1915	2031	1959	2019	1810
Resolved by Trial	4.4%	4.3%	3.7%	3.9%	5.4%	5.2%	4.4%	4.0%
Default/ Uncontested	9.3%	9.0%	8.7%	11.3%	10.5%	10.0%	10.3%	10.1%
Settlement /Dismissal	85.5%	86.2%	87.2%	84.2%	83.4%	83.6%	84.5%	84.5%
Closure by Clerk	0.5%	0.3%	0.4%	0.3%	0.5%	0.5%	0.6%	0.8%
Others	0.4%	0.2%	0.1%	0.4%	0.2%	0.8%	0.3%	0.6%
Probate: # Resolved	1520	1454	1448	1575	1507	1431	1397	1561
Personal Rep. Appointed	71.5%	69.4%	71.7%	72.1%	72.3%	72.6%	72.8%	72.7%
Dismissal	3.4%	2.6%	3.3%	1.9%	2.7%	3.6%	4.3%	2.6%
Closure by Clerk	0.2%	0.1%	0.2%	0.0%	0.0%	0.0%	0.6%	0.1%
Others	24.9%	27.9%	24.9%	26.0%	25.0%	23.8%	22.3%	24.6%
Guardianship: # Resolved	257	237	232	204	235	228	228	220
Guardian Appointed	54.5%	52.3%	48.7%	56.4%	51.1%	54.4%	54.8%	55.5%
Dismissal	44.0%	45.6%	51.3%	43.6%	46.8%	43.9%	44.7%	43.2%
Closure by Clerk	0.4%	0.0%	0.0%	0.0%	0.0%	0.0%	0.0%	0.0%
Others	1.2%	2.1%	0.0%	0.0%	2.1%	1.8%	0.4%	1.4%
Adoption: # Resolved	152	110	139	97	130	106	131	116
Resolved by Trial	2.6%	0.9%	0.7%	0.0%	0.0%	0.0%	0.8%	0.0%
Uncontested	5.3%	7.3%	3.6%	11.3%	2.3%	7.6%	3.1%	9.5%
Settlement /Dismissal	92.1%	90.9%	95.0%	87.6%	97.7%	91.5%	93.9%	90.5%
Closure by Clerk	0.0%	0.0%	0.0%	0.0%	0.0%	0.0%	0.8%	0.0%
Others	0.0%	1.8%	0.7%	1.0%	0.0%	0.9%	1.5%	0.0%
Paternity: # Resolved	231	193	171	154	161	176	153	171
Resolved by Trial	0.9%	0.5%	1.2%	2.6%	3.1%	4.6%	0.0%	1.2%
Summary Judgment	25.1%	50.8%	53.8%	39.6%	41.0%	48.9%	45.8%	52.1%
Default/ Uncontested	32.0%	19.2%	18.1%	22.7%	25.5%	19.3%	24.2%	17.0%
Settlement/Dismissal	28.1%	29.5%	26.9%	35.1%	29.8%	27.3%	29.4%	29.8%
Closure by Clerk	0.0%	0.0%	0.0%	0.0%	0.0%	0.0%	0.0%	0.0%
Others	0.0%	0.0%	0.0%	0.0%	0.6%	0.0%	0.7%	0.0%

Reflecting all documents received by 04/15/2016.

Table 2 (cont.). Number of Cases Resolved and Resolution Category (%)

King County Superior Court

Reporting Category	Q2/14	Q3/14	Q4/14	Q1/15	Q2/15	Q3/15	Q4/15	Q1/16*
Mental Illness: # Resolved	996	1016	963	922	1005	1128	957	1014
Court Decision to Commit	63.9%	66.5%	63.9%	67.7%	62.9%	63.4%	60.4%	64.2%
Closed by Court	0.0%	0.0%	0.0%	0.0%	0.0%	0.0%	0.0%	0.0%
Dismissal	20.6%	18.7%	22.5%	19.6%	19.7%	18.2%	19.8%	20.6%
Others	15.6%	14.8%	13.6%	12.7%	17.4%	18.4%	19.9%	15.2%
Juv. Dependency: # Resolved	224	310	202	196	208	153	159	172
Finding of Dependency	154	233	133	70.9%	76.0%	67.3%	80.5%	72.9%
Dismissal	70	77	69	27.6%	23.6%	32.0%	19.5%	26.7%
Others	0	0	0	1.5%	0.5%	0.7%	0.0%	1.2%
Juv. Terminations: # Resolved	48	59	51	74	50	49	61	62
Finding of Dependency	42	48	43	94.6%	88.0%	77.6%	77.0%	74.2%
Dismissal	6	10	10	5.4%	12.0%	22.4%	23.0%	25.8%
Others	0	1	0	0.0%	0.0%	0.0%	0.0%	0.0%
Juv. ARY/CHINS/OTHER:# Resolved	61	66	66	56	66	61	36	63
Approve of Petition	57.4%	65.1%	63.6%	51.8%	53.0%	39.3%	52.8%	38.1%
Dismissal	42.6%	34.9%	36.4%	46.4%	47.0%	60.7%	47.2%	61.9%
Others	0.0%	0.0%	0.0%	1.8%	0.0%	0.0%	0.0%	0.0%
Juvenile Truancy: # Resolved	109	298	203	270	288	124	264	524
Approve of Petition	72.5%	0.7%	9.9%	45.6%	37.2%	0.8%	1.9%	5.0%
Dismissal	24.8%	99.3%	90.2%	54.4%	62.9%	99.2%	98.1%	95.0%
Others	2.8%	0.0%	0.0%	0.0%	0.0%	0.0%	0.0%	0.0%
Juvenile Offender: # Resolved	413	429	480	456	418	451	363	364
Resolved by Trial (Fact Finding)	7.8%	7.2%	5.4%	6.6%	4.1%	3.8%	1.1%	1.4%
Resolved by Guilty Plea	34.1%	30.8%	33.3%	32.5%	35.4%	28.4%	34.7%	37.4%
Dismissal	43.6%	37.8%	46.5%	44.5%	41.6%	43.7%	46.3%	40.9%
Deferred Disposition (DDSP)	11.1%	19.8%	11.7%	12.9%	15.3%	17.3%	13.2%	15.1%
Others (including Deferred Prosecution)	3.4%	4.4%	3.1%	3.5%	3.6%	6.9%	4.7%	5.2%
Criminal RALJ: # Resolved	48	41	32	45	55	39	35	48
RALJ Decision	72.9%	56.1%	78.1%	71.1%	69.1%	56.4%	54.3%	58.3%
Dismissal	25.0%	36.6%	21.9%	26.7%	29.1%	35.9%	45.7%	35.4%
Others	2.1%	7.3%	0.0%	2.2%	1.8%	7.7%	0.0%	6.3%
Civil RALJ: # Resolved	11	14	17	14	18	12	8	15
RALJ Decision	63.6%	71.4%	41.2%	35.7%	27.8%	16.7%	12.5%	46.7%
Dismissal	27.3%	21.4%	58.8%	50.0%	55.6%	83.3%	62.5%	46.7%
Others	9.1%	7.2%	0.0%	14.3%	16.7%	0.0%	25.0%	6.7%

* Reflecting all documents received by 04/15/2016.

Chart 2-A. Quarterly Resolutions
Total Judicial Cases Only ("Matters Filed with Clerk" excluded)

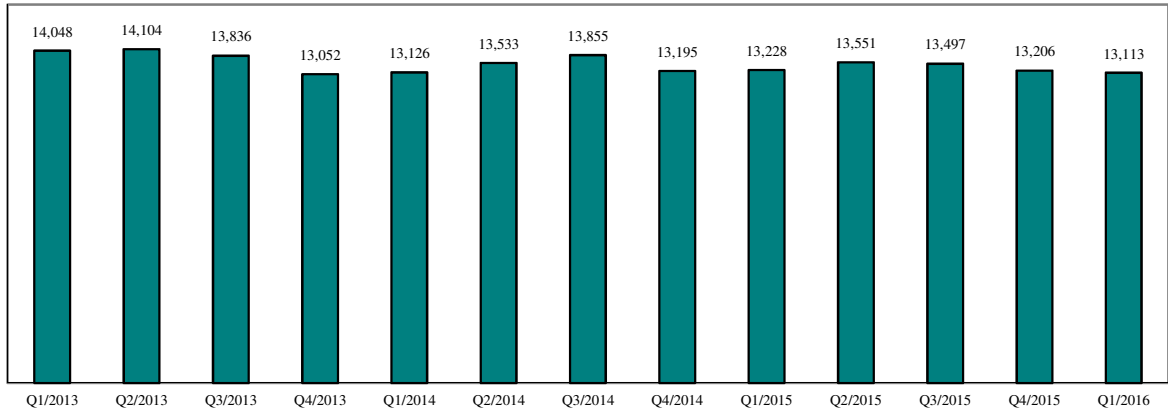
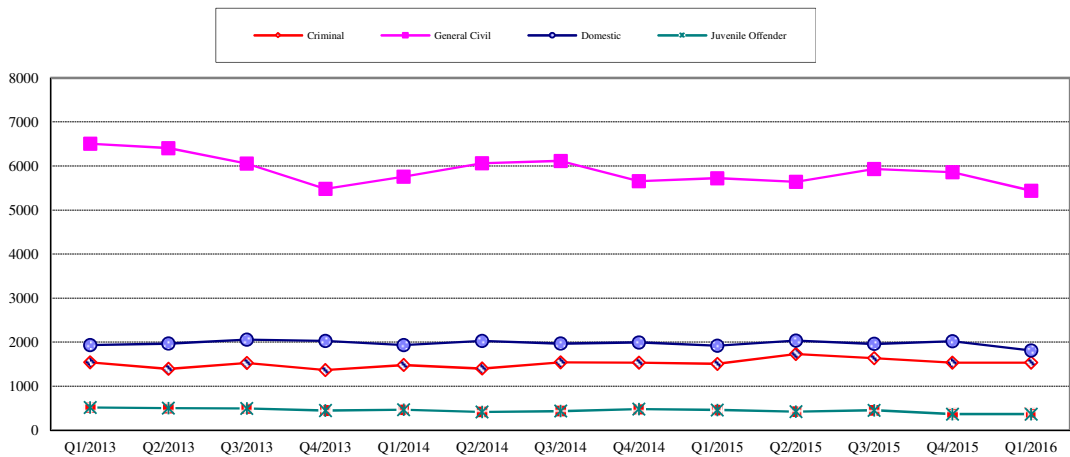


Chart 2-B. Quarterly Resolutions: Criminal, Dmestic, General Civil and Juvenile Offender Cases Only



* Note: "General Civil" is specifically defined in this report. The category of "General Civil" does **not** include the following case types: domestic, probate, guardianship, adoption, paternity, mental illness, juvenile cases (dependency, at-risk youth, child-in-need of service), civil RALJ, and tax filings that don't require judicial resources ("matters filed with clerk"). Please check the Appendix for the cause codes in the "General Civil" category.

Table 3. Age of Resolved Cases
King County Superior Court

Reporting Category	Age of Cases at Resolution							
	Q2/14	Q3/14	Q4/14	Q1/15	Q2/15	Q3/15	Q4/15	Q1/16*
Criminal (excl. RALJ)								
Age (days)								
50% Cases Resolved by Day	117	117	118	124	105	112	113	120
90% Cases Resolved by Day	360	345	342	366	343	326	306	364
Comparison with Court Standard of								
90% in 4 months	51%	51%	51%	49%	56%	53%	53%	50%
98% in 6 months	67%	71%	70%	67%	72%	72%	73%	69%
100% in 9 months	83%	84%	86%	82%	86%	85%	88%	84%
General Civil ⁽¹⁾								
Age (days)								
50% Cases Resolved by Day	36	31	35	30	36	31	35	38
90% Cases Resolved by Day	468	435	437	425	413	407	398	388
Comparison with Court Standard of								
90% in 12 months	84%	85%	84%	84%	85%	85%	88%	86%
98% in 18 months	94%	95%	94%	96%	94%	95%	97%	96%
100% in 24 months	98%	98%	99%	99%	99%	98%	99%	99%
Domestic								
Age (days)								
50% Cases Resolved by Day	181	148	164	171	175	161	149	176
90% Cases Resolved by Day	376	363	364	357	365	368	372	378
Comparison with Court Standard of								
90% in 8 months	64%	68%	67%	66%	60%	64%	66%	61%
98% in 10 months	75%	76%	78%	76%	72%	75%	76%	73%
100% in 14 months	93%	94%	94%	95%	95%	94%	93%	92%
Probate								
Age (days)								
50% Cases Resolved by Day	0	0	0	0	0	0	0	0
90% Cases Resolved by Day	21	15	17	7	13	19	19	12
Comparison with Court Standard of								
90% in 8 months	98%	97%	99%	99%	98%	97%	97%	97%
98% in 18 months	99%	100%	100%	100%	100%	99%	99%	100%
100% in 36 months	100%	100%	100%	100%	100%	100%	100%	100%
Guardianship								
Age (days)								
50% Cases Resolved by Day	59	67	68	65	65	71	62	70
90% Cases Resolved by Day	221	322	274	237	242	211	193	162
Comparison with Court Standard of								
90% in 8 months	91%	89%	88%	89%	89%	91%	92%	96%
98% in 18 months	97%	97%	98%	97%	99%	98%	99%	100%
100% in 36 months	99%	100%	99%	99%	100%	100%	100%	100%
Adoption								
Age (days)								
50% Cases Resolved by Day	88	40	56	79	70	42	55	62
90% Cases Resolved by Day	593	943	230	504	414	298	211	499
Comparison with Court Standard of								
90% in 8 months	74%	86%	90%	81%	84%	90%	89%	80%
98% in 10 months	77%	89%	90%	84%	87%	93%	91%	84%
100% in 14 months	81%	89%	96%	88%	91%	95%	94%	89%
Paternity								
Age (days)								
50% Cases Resolved by Day	154	155	145	141	139	135	139	164
90% Cases Resolved by Day	288	292	286	309	303	307	272	306
Comparison with Court Standard of								
90% in 8 months	84%	83%	82%	78%	76%	76%	84%	73%
98% in 10 months	93%	94%	93%	87%	89%	90%	94%	88%
100% in 14 months	96%	97%	98%	96%	96%	98%	98%	97%

Table 3 (cont.) Age of Resolved Cases
King County Superior Court

Reporting Category	Age of Cases at Resolution							
	Q2/14	Q3/14	Q4/14	Q1/15	Q2/15	Q3/15	Q4/15	Q1/16*
Mental Illness**								
Age (days)								
50% Cases Resolved by Day	3	2	3	3	4	4	4	3
90% Cases Resolved by Day	13	10	10	12	14	18	21	15
Juvenile Dependency (DEP)								
Age (days)								
50% Cases Resolved by Day	104	115	121	111	121	89	125	85
90% Cases Resolved by Day	252	402	253	312	250	217	221	218
Comparison with Court Standard of								
90% in 8 months	89%	79%	89%	85%	90%	90%	94%	92%
98% in 10 months	93%	82%	92%	91%	95%	92%	95%	97%
100% in 14 months	98%	91%	97%	98%	99%	94%	98%	99%
Juvenile Termination (TER)								
Age (days)								
50% Cases Resolved by Day	138	152	131	138	182	154	106	163
90% Cases Resolved by Day	292	346	321	263	282	382	350	406
Comparison with Court Standard of								
90% in 8 months	85%	68%	81%	83%	80%	73%	81%	68%
98% in 10 months	93%	83%	89%	94%	94%	89%	84%	81%
100% in 14 months	100%	95%	100%	99%	96%	94%	97%	92%
Juv ARY/CHINS/OTHER								
Age (days)								
50% Cases Resolved by Day	24	35	34	80	37	103	35	55
90% Cases Resolved by Day	109	235	184	622	139	304	288	294
Comparison with Court Standard of								
90% in 8 months	95%	93%	95%	87%	94%	73%	90%	86%
98% in 10 months	99%	100%	99%	89%	96%	88%	93%	91%
100% in 14 months	100%	100%	100%	89%	98%	97%	97%	94%
Juvenile Truancy**								
Age (days)								
50% Cases Resolved by Day	30	36	108	128	133	182	269	341
90% Cases Resolved by Day	94	148	214	750	357	646	394	493
Juvenile Offender								
Age (days)								
50% Cases Resolved by Day	78	66	84	98	89	92	88	99
90% Cases Resolved by Day	250	236	241	267	257	273	257	235
Comparison with Court Standard of								
90% in 4 months	67%	72%	63%	61%	66%	63%	66%	60%
98% in 6 months	78%	84%	80%	78%	83%	79%	79%	79%
100% in 9 months	91%	91%	93%	91%	91%	90%	91%	95%
Criminal RALJ								
Age (days)								
50% Cases Resolved by Day	282	228	258	296	251	258	260	247
90% Cases Resolved by Day	482	353	407	725	456	438	421	636
Civil RALJ								
Age (days)								
50% Cases Resolved by Day	175	186	164	180	167	165	170	165
90% Cases Resolved by Day	329	299	352	272	216	336	249	280

* Reflecting all documents received by 04/15/2016.

** No standard yet.

Table 4. Active Pending Caseload Statistics
King County Superior Court

Reporting Category	Q2/14	Q3/14	Q4/14	Q1/15	Q2/15	Q3/15	Q4/15	Q1/16*
Total (incl. RALJ)								
Previous Pending (+)	18514	19112	18951	18811	18603	18623	18333	17886
New Filing (+)	13787	12997	12667	13257	13323	12712	12334	12992
Resolved (-)	13573	13855	13195	13228	13551	13497	13206	13113
End Pending	19112	18951	18811	18630	18623	18333	17886	18216
Resolution Rate**	0.982	1.066	1.042	0.998	1.017	1.062	1.071	1.009
Criminal (excl. RALJ)								
Previous Pending (+)	2883	2966	2923	2866	2908	2882	2727	2619
New Filing (+)	1590	1465	1567	1682	1711	1446	1395	1647
Resolved (-)	1440	1540	1535	1507	1731	1635	1532	1529
End Pending	2966	2923	2866	2908	2882	2727	2619	2725
Resolution Rate**	0.881	1.051	0.980	0.896	1.012	1.131	1.098	0.928
General Civil								
Previous Pending (+)	7518	7542	7336	7079	7215	7036	6851	6691
New Filing (+)	5704	5527	5020	5213	5308	5448	5210	5110
Resolved (-)	6055	6111	5650	5718	5639	5933	5853	5435
End Pending	7542	7336	7079	7215	7036	6851	6691	6686
Resolution Rate**	1.062	1.106	1.125	1.097	1.062	1.089	1.123	1.064
Asbestos Cases (civil) ⁽¹⁾								
Previous Pending (+)	77	70	71	69	57	54	60	56
New Filing (+)	7	14	9	9	6	18	2	8
Resolved (-)	13	14	14	25	8	12	10	9
End Pending	70	71	69	57	54	60	56	55
Resolution Rate**	1.857	1.000	1.556	2.778	1.333	0.667	5.000	1.125
Domestic								
Previous Pending (+)	4499	4609	4802	4579	4520	4497	4562	4234
New Filing (+)	2110	2124	1773	1904	1964	1997	1694	1897
Resolved (-)	2022	1963	1994	1203	2031	1959	2019	1810
End Pending	4609	4802	4579	4520	4497	4562	4234	4336
Resolution Rate**	0.958	0.924	1.125	1.006	1.034	0.981	1.192	0.954
Probate								
Previous Pending (+)	850	861	902	908	511	562	581	580
New Filing (+)	1509	1474	1426	1652	1527	1422	1419	1586
Resolved (-)	1520	1454	1448	1575	1507	1431	1397	1561
End Pending	861	902	908	511	562	581	580	624
Resolution Rate**	1.007	0.986	1.015	0.953	0.987	1.006	0.984	0.984
Guardianship								
Previous Pending (+)	334	320	316	301	274	283	305	311
New Filing (+)	241	232	219	221	245	251	253	245
Resolved (-)	257	237	232	204	235	228	228	220
End Pending	320	316	301	274	283	305	311	336
Resolution Rate**	1.066	1.022	1.059	0.923	0.959	0.908	0.901	0.898
Adoption								
Previous Pending (+)	200	158	151	149	163	154	163	147
New Filing (+)	110	103	135	112	119	114	114	130
Resolved (-)	152	110	139	97	130	106	131	116
End Pending	158	151	149	163	154	163	147	163
Resolution Rate**	1.382	1.068	1.030	0.866	1.092	0.930	1.149	0.892
Paternity								
Previous Pending (+)	384	338	295	300	282	316	293	310
New Filing (+)	179	146	180	146	191	149	163	139
Resolved (-)	231	193	171	154	161	176	153	171
End Pending	338	295	300	282	316	293	310	278
Resolution Rate**	1.291	1.322	0.950	1.055	0.843	1.181	0.939	1.230

* Reflecting all documents received by 04/15/2016.

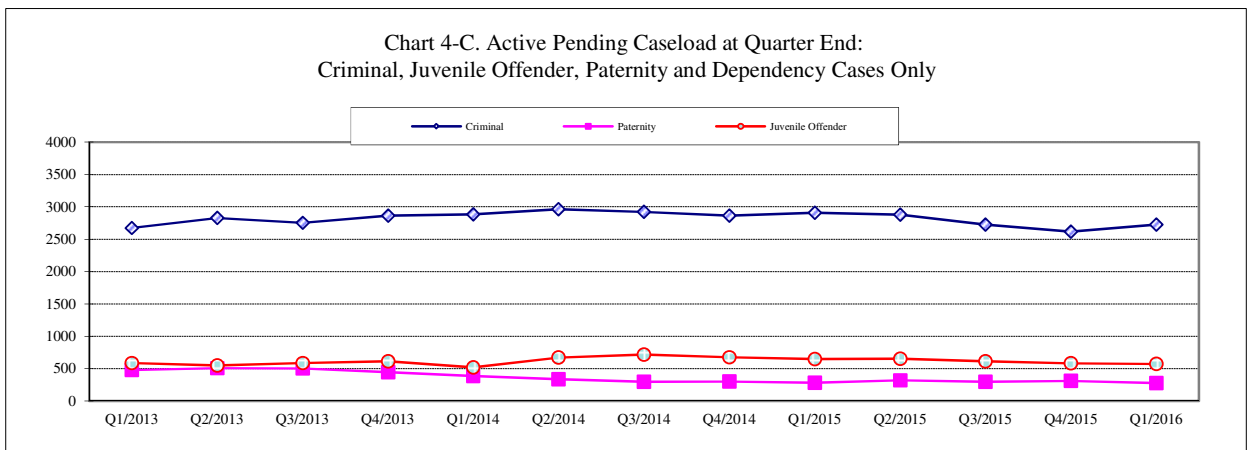
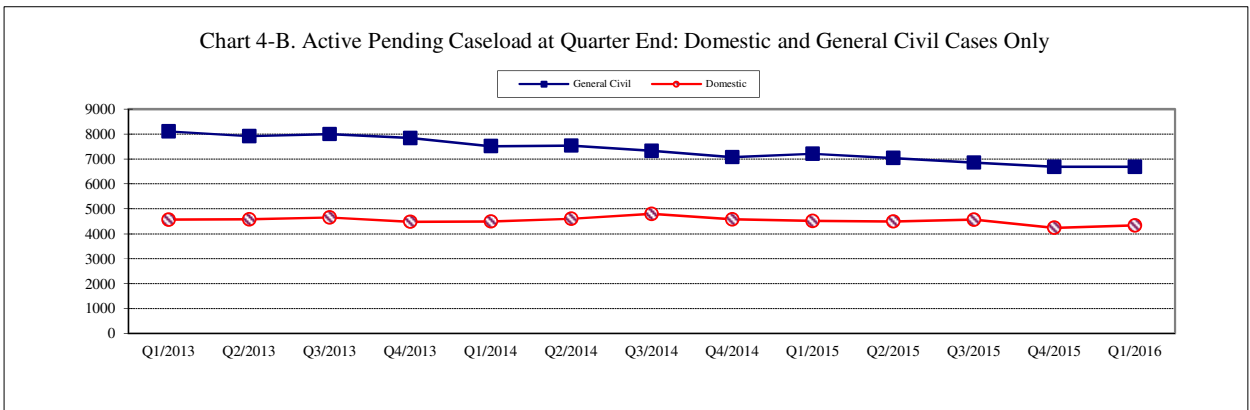
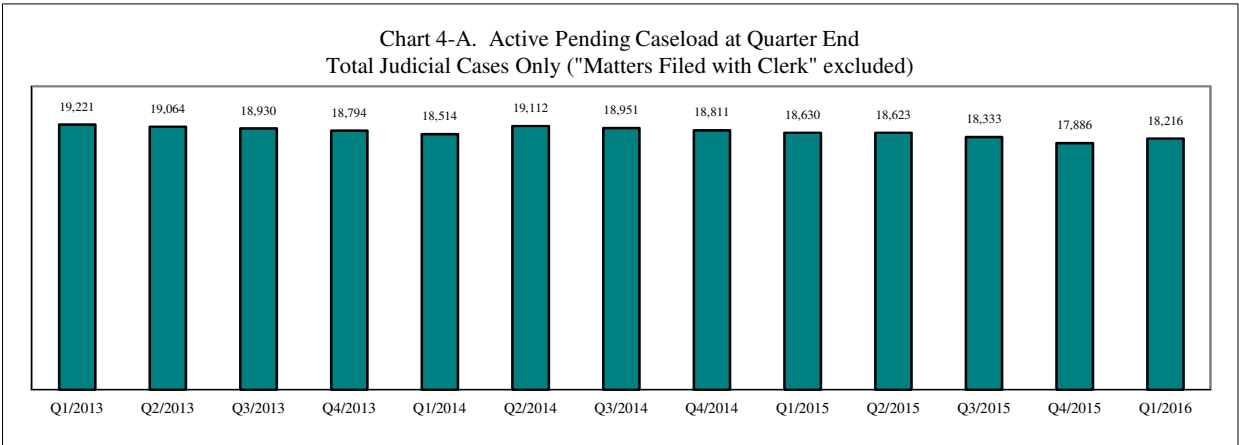
** A value of "Resolution Rate" less than one indicates the resolution pace is slower than the filing pace.

Table 4 (cont.) Active Pending Caseload Statistics
King County Superior Court

Reporting Category	Q2/14	Q3/14	Q4/14	Q1/15	Q2/15	Q3/15	Q4/15	Q1/16*
Mental Illness								
Previous Pending (+)	119	137	120	121	143	162	122	90
New Filing (+)	1014	996	965	962	1024	1085	935	1020
Resolved (-)	996	1016	963	922	1005	1128	957	1014
End Pending	137	120	121	143	162	122	90	95
Resolution Rate**	0.982	1.020	0.998	0.958	0.981	1.040	1.024	0.994
Juvenile Dependency (DEP)								
Previous Pending (+)	420	528	398	414	325	333	394	474
New Filing (+)	302	181	213	171	222	205	259	210
Resolved (-)	224	310	202	196	208	153	159	172
End Pending	528	398	414	325	333	394	474	506
Resolution Rate**	0.742	1.713	0.948	1.146	0.937	0.746	0.614	0.819
Juvenile Termination (TER)								
Previous Pending (+)	119	132	161	225	175	169	194	164
New Filing (+)	60	86	121	43	47	73	51	44
Resolved (-)	48	59	53	74	50	49	61	62
End Pending	132	161	225	175	169	194	164	148
Resolution Rate**	0.800	0.686	0.438	1.721	1.064	0.671	1.196	1.409
Juvenile ARY/CHINS/OTHERS								
Previous Pending (+)	105	111	114	119	91	89	87	111
New Filing (+)	68	67	69	48	61	41	56	63
Resolved (-)	61	66	66	56	66	61	36	63
End Pending	111	114	119	91	89	87	111	118
Resolution Rate**	0.897	0.985	0.957	1.167	1.082	1.488	0.642	1.000
Juvenile Truancy								
Previous Pending (+)	315	508	477	821	1153	1271	1202	1329
New Filing (+)	348	27	468	573	388	14	391	532
Resolved (-)	109	298	203	270	288	124	264	524
End Pending	508	477	821	1153	1271	1202	1329	1397
Resolution Rate**	0.313	11.037	0.434	1.471	0.742	8.857	0.675	0.985
Juvenile Offender								
Previous Pending (+)	518	668	716	677	646	651	614	581
New Filing (+)	494	500	441	473	443	384	337	307
Resolved (-)	413	429	480	456	418	451	363	364
End Pending	668	716	677	646	651	614	581	571
Resolution Rate**	0.836	0.858	1.088	0.964	0.944	1.174	1.077	1.186
Criminal RALJ								
Previous Pending (+)	146	133	138	155	140	138	154	156
New Filing (+)	33	46	48	34	51	55	40	40
Resolved (-)	48	41	32	45	55	39	35	48
End Pending	133	138	155	140	138	154	156	146
Resolution Rate**	1.455	0.891	0.667	1.324	1.078	0.709	0.875	1.200
Civil RALJ								
Previous Pending (+)	29	34	30	28	27	26	24	33
New Filing (+)	16	9	14	14	16	10	15	14
Resolved (-)	11	14	17	14	18	12	8	15
End Pending	34	30	28	27	26	24	33	32
Resolution Rate**	0.688	1.556	1.214	1.000	1.125	1.200	0.533	1.071

* Reflecting all documents received by 04/15/2016.

** A value of "Resolution Rate" less than one indicates the resolution pace is slower than the filing pace.



* Note: "General Civil" is specifically defined in this report. The category of "General Civil" does **not** include the following case types: domestic, probate, guardianship, adoption, paternity, mental illness, juvenile cases (dependency, at-risk youth, child-in-need of service), civil RALJ, and tax filings that don't require judicial resources ("matters filed with clerk"). Please check the Appendix for the cause codes in the "General Civil" category.

Table 5. Age of Pending Cases
King County Superior Court

Reporting Category	Age of Pending Cases and # of Cases in Each Age Interval							
	Q2/14	Q3/14	Q4/14	Q1/15	Q2/15	Q3/15	Q4/15	Q1/16*
Criminal (excl. RALJ): # of Cases	2966	2923	2866	2908	2882	2727	2619	2825
Age (days)								
Median (50 percentile)	106	120	119	96	97	106	110	95
95 percentile	754	785	794	525	549	572	610	395
# of Cases in Age Interval								
0 - 60 days (0 - 2 months)	896	854	835	1072	993	929	808	1020
61 - 120 days (3 - 4 months)	743	616	612	627	689	572	586	547
121 - 180 days (5 - 6 months)	380	435	383	362	379	406	357	348
181 - 270 days (7 - 9 months)	326	377	337	308	321	331	337	306
> 270 days (> 9 months)	621	641	699	539	500	489	531	504
General Civil: # of Cases	7542	7336	7079	7215	7036	6851	6691	6686
Age (days)								
Median (50 percentile)	144	153	157	160	133	134	143	134
95 percentile	566	577	577	547	518	524	536	395
# of Cases in Age Interval								
0 - 120 days (0 - 4 months)	3380	3142	2889	2959	3299	3184	2942	3127
121 - 240 days (5 - 8 months)	1586	1793	1784	1793	1534	1675	1688	1643
241 - 360 days (9 - 12 months)	1176	1035	1209	1299	1115	965	1144	1063
361 - 540 days (13 - 18 months)	941	923	760	789	775	726	590	567
541 - 720 days (19 - 24 months)	290	258	237	231	183	183	185	146
> 720 days (> 24 months)	169	185	200	144	130	118	142	140
Asbestos Cases (civil) ⁽¹⁾ : # of Cases	70	71	69	57	54	60	56	55
Age (days)								
Median (50 percentile)	372	371	374	253	329	271	332	304
95 percentile	851	897	916	1002	1093	1002	791	690
# of Cases in Age Interval								
0 - 120 days (0 - 4 months)	12	13	10	13	9	18	6	9
121 - 240 days (5 - 8 months)	10	11	14	11	9	9	17	5
241 - 360 days (9 - 12 months)	11	9	9	10	16	10	8	16
361 - 540 days (13 - 18 months)	22	14	14	10	9	16	16	11
541 - 720 days (19 - 24 months)	8	17	15	5	4	3	5	9
> 720 days (> 24 months)	7	7	7	8	7	4	4	5
Domestic: # of Cases	4609	4802	4579	4520	4497	4562	4234	4336
Age (days)								
Median (50 percentile)	109	112	129	126	117	115	128	120
95 percentile	548	548	593	538	559	563	623	359
# of Cases in Age Interval								
0 - 120 days (0 - 4 months)	2486	2555	2168	2229	2322	2347	2020	2187
121 - 240 days (5 - 8 months)	1065	1221	1388	1206	1113	1228	1175	1133
241 - 360 days (9 - 12 months)	601	533	561	661	643	529	604	589
361 - 540 days (13 - 18 months)	223	246	197	200	186	221	196	177
> 540 days (> 18 months)	234	247	265	224	233	237	239	250
Probate: # of Cases	861	905	908	511	562	581	580	624
Age (days)								
Median (50 percentile)	494	538	630	680	272	276	297	332
95 percentile	2164	2241	2333	869	847	932	1084	1025
# of Cases in Age Interval								
0 - 120 days (0 - 4 months)	153	140	116	172	165	139	149	161
121 - 240 days (5 - 8 months)	95	115	83	89	99	124	103	86
241 - 360 days (9 - 12 months)	104	66	82	72	77	59	86	81
361 - 540 days (13 - 18 months)	113	134	120	69	83	93	67	85
> 540 days (> 18 months)	396	450	497	109	138	166	175	211

Reflecting all documents received by 04/15/2016.

Table 5 (cont.). Age of Pending Cases

King County Superior Court

Reporting Category	Age of Pending Cases and # of Cases in Each Age Interval							
	Q2/14	Q3/14	Q4/14	Q1/15	Q2/15	Q3/15	Q4/15	Q1/16*
Guardianship: # of Cases	320	316	301	274	283	305	311	336
Age (days)								
Median (50 percentile)	91	100	86	64	71	65	70	67
95 percentile	657	744	798	544	520	541	409	364
# of Cases in Age Interval								
0 - 120 days (0 - 4 months)	181	172	166	175	196	198	215	222
121 - 240 days (5 - 8 months)	45	44	37	42	35	56	45	48
241 - 360 days (9 - 12 months)	25	32	28	24	17	18	31	32
361 - 540 days (13 - 18 months)	37	31	21	18	21	17	11	24
> 540 days (> 18 months)	32	37	49	15	14	16	9	10
Adoption: # of Cases	158	151	149	163	154	163	147	163
Age (days)								
Median (50 percentile)	120	127	120	110	106	133	155	101
95 percentile	1562	832	924	848	939	938	1123	515
# of Cases in Age Interval								
0 - 120 days (0 - 4 months)	81	71	75	86	83	76	67	93
121 - 240 days (5 - 8 months)	25	35	25	31	27	40	24	21
241 - 360 days (9 - 12 months)	19	14	19	14	15	16	23	17
361 - 540 days (13 - 18 months)	9	14	13	16	16	12	13	17
> 540 days (> 18 months)	24	17	17	16	13	19	20	15
Paternity: # of Cases	338	295	300	282	316	293	310	278
Age (days)								
Median (50 percentile)	96	100	86	105	84	99	102	102
95 percentile	327	334	320	285	301	301	301	256
# of Cases in Age Interval								
0 - 120 days (0 - 4 months)	210	173	183	171	211	179	173	157
121 - 240 days (5 - 8 months)	92	88	77	85	76	89	95	86
241 - 360 days (9 - 12 months)	23	23	28	17	25	17	32	27
361 - 540 days (13 - 18 months)	10	5	7	7	4	8	10	7
> 540 days (> 18 months)	3	6	5	2	0	0	0	1
Mental Illness: # of Cases	137	120	121	143	162	122	90	95
Age (days)								
Median (50 percentile)	50	113	150	33	21	23	10	9
95 percentile	629	725	813	805	896	686	168	182
# of Cases in Age Interval								
0 - 120 days (0 - 4 months)	79	61	59	92	109	106	76	85
121 - 240 days (5 - 8 months)	13	11	9	9	16	4	11	3
> 240 days (> 8 months)	38	48	53	42	37	12	3	7
Juv Dependency (DEP): # of Cases	528	398	414	325	333	394	474	506
Age (days)								
Median (50 percentile)	83	117	106	99	76	106	90	137
95 percentile	515	672	762	386	432	517	562	455
# of Cases in Age Interval								
0 - 60 days (0 - 2 months)	201	112	132	119	125	122	180	131
61 - 120 days (3 - 4 months)	136	93	89	78	98	99	110	105
121 - 180 days (5 - 6 months)	55	76	37	53	32	65	49	82
181 - 270 days (7 - 9 months)	50	50	60	25	28	35	56	71
> 270 days (> 9 months)	83	66	95	50	50	73	79	117
Juv Termination (TER): # of Cases	132	161	225	175	169	194	164	148
Age (days)								
Median (50 percentile)	109	90	90	132	189	188	175	214
95 percentile	780	872	757	404	460	504	539	589
# of Cases in Age Interval								
0 - 60 days (0 - 2 months)	46	50	75	20	40	49	27	21
61 - 120 days (3 - 4 months)	21	47	64	48	11	36	27	19
121 - 180 days (5 - 6 months)	20	20	31	53	26	11	31	17
181 - 270 days (7 - 9 months)	12	16	23	31	49	24	20	35
> 270 days (> 9 months)	29	25	31	23	43	74	59	56

* Reflecting all documents received by 04/15/2016.

Table 5 (cont.). Age of Pending Cases
King County Superior Court

Reporting Category	Age of Pending Cases and # of Cases in Each Age Interval							
	Q2/14	Q3/14	Q4/14	Q1/15	Q2/15	Q3/15	Q4/15	Q1/16*
Juv. ARY/CHINS/OTHER: # of Cases	111	114	119	91	89	87	111	118
Age (days)								
Median (50 percentile)	222	238	248	170	261	353	207	218
95 percentile	2941	3033	3125	3264	3355	3390	3482	2850
# of Cases in Age Interval								
0 - 60 days (0 - 2 months)	32	35	24	28	22	20	23	26
61 - 120 days (3 - 4 months)	8	10	20	7	8	7	20	14
121 - 180 days (5 - 6 months)	12	8	9	11	4	9	11	14
181 - 270 days (7 - 9 months)	11	8	8	6	12	3	7	14
> 270 days (> 9 months)	48	53	58	39	43	48	50	50
Juvenile Truancy: # of Cases	508	477	821	1153	1271	1202	1329	1397
Age (days)								
Median (50 percentile)	75	159	76	93	134	222	274	143
95 percentile	837	940	995	1064	1148	1245	1324	470
# of Cases in Age Interval								
0 - 60 days (0 - 2 months)	190	25	321	447	179	6	277	380
61 - 120 days (3 - 4 months)	112	83	149	255	392	33	115	216
121 - 180 days (5 - 6 months)	24	176	1	216	266	279	9	242
181 - 270 days (7 - 9 months)	32	24	168	13	256	485	253	11
> 270 days (> 9 months)	150	169	182	222	178	399	675	548
Juvenile Offender: # of Cases	668	716	677	646	651	614	581	571
Age (days)								
Median (50 percentile)	75	92	90	76	90	97	120	118
95 percentile	620	545	627	418	439	449	507	435
# of Cases in Age Interval								
0 - 60 days (0 - 2 months)	281	232	253	268	239	216	162	177
61 - 120 days (3 - 4 months)	167	201	139	169	163	145	129	113
121 - 180 days (5 - 6 months)	70	103	90	73	87	93	93	71
181 - 270 days (7 - 9 months)	46	75	85	51	75	77	87	75
> 270 days (> 9 months)	104	105	110	85	87	83	110	135
Criminal RALJ: # of Cases	133	138	155	140	138	154	156	146
Age (days)								
Median (50 percentile)	169	154	146	158	133	136	171	169
95 percentile	410	499	591	451	506	581	673	364
# of Cases in Age Interval								
0 - 60 days (0 - 2 months)	23	31	33	31	35	34	28	27
61 - 120 days (3 - 4 months)	22	24	28	20	28	32	20	23
121 - 180 days (5 - 6 months)	29	20	30	29	17	33	40	24
181 - 270 days (7 - 9 months)	32	29	28	31	30	25	42	37
> 270 days (> 9 months)	27	34	36	29	28	30	26	35
Civil RALJ: # of Cases	34	30	28	27	26	24	33	32
Age (days)								
Median (50 percentile)	114	117	103	105	101	110	93	106
95 percentile	335	427	388	279	301	248	304	339
# of Cases in Age Interval								
0 - 60 days (0 - 2 months)	12	4	7	7	8	6	13	9
61 - 120 days (3 - 4 months)	9	11	9	8	9	7	7	9
121 - 180 days (5 - 6 months)	3	8	5	8	5	7	5	7
181 - 270 days (7 - 9 months)	8	3	5	2	1	3	5	3
> 270 days (> 9 months)	2	4	2	2	3	1	3	4

* Reflecting all documents received by 04/15/2016.

Table 6. Seattle vs. Regional Justice Center (KNT): Filing, Resolution, Pending Caseload (%)

King County Superior Court

	Q1/15		Q2/15		Q3/15		Q4/15		Q1/16	
	SEA	KNT	SEA	KNT	SEA	KNT	SEA	KNT	SEA	KNT
Filings Total <i>(excl. filings with clerk)</i>	64%	36%	63%	37%	64%	36%	63%	37%	64%	36%
Criminal (excl. RALJ)	52%	48%	56%	44%	53%	47%	55%	45%	57%	43%
General Civil (excl. RALJ)	57%	43%	55%	45%	57%	43%	55%	45%	59%	41%
Domestic	58%	42%	59%	41%	61%	39%	62%	38%	61%	39%
Probate	78%	22%	75%	25%	76%	24%	77%	23%	76%	24%
Guardianship	66%	34%	58%	42%	63%	37%	56%	44%	62%	38%
Adoption	78%	22%	70%	30%	70%	30%	70%	30%	77%	23%
Paternity	61%	39%	50%	50%	45%	55%	43%	57%	42%	58%
Mental Illness	100%	---	100%	---	100%	---	100%	---	100%	---
Juv. Dependency (DEP)	41%	59%	44%	56%	37%	63%	38%	62%	39%	61%
Juv. Termination (TER)	63%	37%	64%	36%	62%	38%	39%	61%	64%	36%
Juvenile ARY/CHINS/Other	31%	69%	43%	57%	44%	56%	48%	52%	43%	57%
Juvenile Truancy	46%	54%	51%	49%	71%	29%	48%	52%	42%	58%
Juvenile Offender	100%	---	100%	---	100%	---	100%	---	100%	---
Criminal RALJ	97%	3%	86%	14%	91%	9%	93%	7%	98%	2%
Civil RALJ	86%	14%	94%	6%	80%	20%	93%	7%	71%	29%
Resolution Total <i>(excl. filings with clerk)</i>	64%	36%	62%	38%	63%	37%	62%	38%	65%	35%
Criminal (excl. RALJ)	51%	49%	46%	54%	54%	46%	52%	48%	57%	43%
General Civil (excl. RALJ)	57%	43%	56%	44%	54%	46%	55%	44%	59%	41%
Domestic	63%	37%	59%	41%	59%	41%	60%	40%	61%	49%
Probate	78%	22%	75%	25%	77%	23%	76%	24%	76%	24%
Guardianship	60%	40%	62%	38%	64%	36%	59%	41%	55%	45%
Adoption	73%	27%	73%	27%	64%	36%	75%	25%	72%	28%
Paternity	48%	52%	50%	50%	52%	48%	46%	54%	52%	48%
Mental Illness	100%	---	100%	---	100%	---	100%	---	100%	---
Juv. Dependency (DEP)	55%	45%	45%	55%	41%	59%	38%	62%	39%	61%
Juv. Termination (TER)	66%	34%	68%	32%	63%	37%	49%	51%	57%	43%
Juvenile ARY/CHINS/Other	39%	61%	38%	62%	33%	67%	42%	58%	43%	57%
Juvenile Truancy	63%	37%	47%	53%	79%	21%	44%	56%	54%	46%
Juvenile Offender	100%	---	100%	---	100%	---	100%	---	100%	---
Criminal RALJ	89%	11%	93%	7%	97%	3%	97%	3%	81%	19%
Civil RALJ	86%	14%	89%	11%	100%	---	75%	25%	100%	---
Pending Total <i>(excl. filings with clerk)</i>	63%	37%	63%	37%	64%	36%	64%	36%	63%	37%
Criminal (excl. RALJ)	51%	49%	55%	45%	54%	46%	57%	43%	57%	43%
General Civil (excl. RALJ)	67%	33%	66%	34%	68%	32%	68%	32%	68%	32%
Domestic	59%	41%	59%	41%	59%	41%	60%	40%	60%	40%
Probate	80%	20%	80%	20%	78%	22%	80%	20%	79%	21%
Guardianship	64%	36%	59%	41%	59%	41%	57%	43%	60%	40%
Adoption	76%	24%	72%	28%	76%	24%	71%	29%	76%	24%
Paternity	65%	35%	60%	40%	55%	45%	53%	47%	48%	52%
Mental Illness	100%	---	100%	---	100%	---	100%	---	100%	---
Juv. Dependency (DEP)	43%	57%	43%	57%	41%	59%	39%	61%	37%	63%
Juv. Termination (TER)	63%	37%	62%	38%	61%	39%	54%	46%	55%	45%
Juvenile ARY/CHINS/Other	60%	40%	64%	36%	64%	36%	60%	40%	60%	40%
Juvenile Truancy	51%	49%	52%	48%	51%	41%	51%	49%	48%	52%
Juvenile Offender	100%	---	100%	---	100%	---	100%	---	100%	---
Criminal RALJ	94%	6%	91%	9%	90%	10%	89%	11%	93%	7%
Civil RALJ	89%	11%	89%	11%	79%	21%	88%	12%	75%	25%

Reflecting all documents received by 04/15/2016.

Table 7. Quarterly Utilization of Pro Tem Judges/Commissioners ⁽¹⁾

Category	Q3/13	Q4/13	Q1/14	Q2/14	Q3/14	Q4/14	Q1/15	Q2/15	Q3/15	Q4/15	Q1/16*
Grand Total	1391	2546	1450	1610	1510	1510	797	1226	1054	1733	769
Judge FTE Equivalent ⁽³⁾	3.1	5.7	3.2	3.6	3.4	3.4	1.8	2.7	2.3	3.9	1.7
By Work Type											
Pro Tem Judge				412	332	459	70	97	130	236	99
Pro Tem Commissioner				1028	1178	1051	709	1117	925	1497	679
Unspecified				170	0	0	17	13	0	0	0
By Location											
KCCH				532	655	916	317	454	346	882	420
MRJC				505	377	273	193	273	326	501	193
Juvenile				282	283	276	237	312	260	234	123
ITA				158	195	46	33	174	122	117	33
Other				133	0	0	17	13	0	0	0
By Calendar Type											
Criminal				128	75	262	13	51	112	185	70
Civil				74	32	22	0	0	0	0	3
Ex Parte				536	333	170	102	219	100	264	64
Family Law/Domestic				309	506	715	396	453	461	929	470
Dependency				217	119	133	183	225	240	172	81
Juvenile Offender				103	144	119	47	45	18	51	27
BECCA				30	20	13	7	42	3	11	16
ITA				158	195	46	33	174	122	117	33
Juvenile Drug Court				9	0	0	0	0	0	0	0
Family Treatment Court				6	0	0	0	0	0	0	0
Plea Calendar				42	71	8	0	0	0	0	0
Status/Non-Compliance				0	6	13	0	4	0	0	7
Other or Unspecified				0	10	13	17	13	0	0	0
By Reason											
Vacation Backfill				565	572	674	396	527	673	818	397
Medical Backfill				112	208	292	147	156	168	294	211
Duty Time				210	249	219	211	244	132	288	134
Conference Coverage				259	229	4	0	257	0	59	0
Congestion				168	80	259	8	30	69	126	23
Vacancy Coverage				263	109	0	0	0	0	5	4
Other				34	64	63	35	13	12	145	0

(1) This table is based on the time sheet for compensation

(2) Judge FTE Equivalent = # of hours / [7.5 hours/day * 20 days/month * 3 months] = # of hours/450.

Data for the most current quarter are incomplete at reporting time and will be updated in next quarterly report.

The statistics on Pro Tem judge/commissioner use provide information on the external help the court has obtained in order to handle the workload. The data are collected on the time sheet for compensation (therefore it does not include unpaid volunteering or visiting judges/commissioners). The database on Pro Tem judges/commissioners is managed by the Administrative Services Department (ASD) of King County Superior Court. The Pro Tem total hours presented in this section are provided quarterly by ASD.

Table 8. Family Law Activity

	3RD QTR, 2014		4T QTR, 2014		1ST QTR, 2015		2ND QTR, 2015		3RD QTR, 2015		4TH QTR, 2015		1ST QTR, 2016	
	HRGS	ORDS	HRGS	ORDS	HRGS	ORDS	HRGS	ORDS	HRGS	ORDS	HRGS	ORDS	HRGS	ORDS
SEATTLE														
FAM.LAW	490	2127	490	2248	381	1881	383	1814	524	1833	510	1665	451	1673
DAILY AVG.	8	35	8	37	6	31	6	30	9	30	8	27	7	27
PATERNITY	61	1133	53	1270	47	1112	49	1035	112	964	117	923	103	909
DAILY AVG.	1	19	1	21	1	18	1	17	2	16	2	15	2	15
DOM. VIOL.	267	563	234	484	228	545	239	576	261	598	229	643	232	666
DAILY AVG.	4	9	4	8	4	9	4	9	4	10	4	11	4	11
	3RD QTR, 2014		4T QTR, 2014		1ST QTR, 2015		2ND QTR, 2015		3RD QTR, 2015		4TH QTR, 2015		1ST QTR, 2016	
	HRGS	HRGS	HRGS	ORDS	HRGS	ORDS	HRGS	ORDS	HRGS	ORDS	HRGS	ORDS	HRGS	ORDS
KENT														
FAM.LAW	473	1569	380	1637	285	1414	363	1433	380	1400	403	1362	372	1309
DAILY AVG.	8	26	6	27	5	23	6	23	6	23	7	22	6	21
PATERNITY	58	910	60	960	37	730	41	757	57	764	54	734	72	763
DAILY AVG.	1	15	1	16	1	12	1	12	1	13	1	12	1	13
DOM. VIOL.	496	620	432	562	439	666	478	704	395	782	356	749	338	719
DAILY AVG.	8	10	7	9	7	11	8	12	6	13	6	12	6	12
	3RD QTR, 2014		4T QTR, 2014		1ST QTR, 2015		2ND QTR, 2015		3RD QTR, 2015		4TH QTR, 2015		1ST QTR, 2016	
	HRGS	ORDS	HRGS	ORDS	HRGS	ORDS	HRGS	ORDS	HRGS	ORDS	HRGS	ORDS	HRGS	ORDS
GRAND TOTAL	1845	6922	1649	7161	1417	6348	1553	6319	1729	6341	1669	6076	1568	6039
OVERALL DAILY AVG.	30	113	27	117	23	104	25	104	28	104	27	100	26	99

The statistics on family law and Ex Parte activity are obtained directly from SCOMIS using the appropriate docket codes.

Table 9. Ex Parte Activity

SEATTLE	1ST QTR, 2015		2ND QTR, 2015		3RD QTR, 2015		4TH QTR, 2015		1ST QTR, 2016	
	HRGS	ORDS	HRGS	ORDS	HRGS	ORDS	HRGS	ORDS	HRGS	ORDS
ADOP/PAT	52	208	86	284	69	256	102	321	63	321
DOM. VIOL.	1	360	2	402	2	446	9	417	10	388
OTH. CIVIL	281	528	245	467	262	551	237	560	241	544
DOMESTIC	495	1798	423	1805	547	1893	594	2176	462	1774
PROB/GDN	1330	2328	1318	2233	1259	2379	1226	2306	1258	2576
SUBTOTAL	2159	5222	2074	5191	2139	5525	2168	5780	2034	5603
DAILY AVG.	35	86	34	85	35	91	36	95	33	92

SEATTLE VIA CLERK (starting Jan 2009)	1ST QTR, 2015		2ND QTR, 2015		3RD QTR, 2015		4TH QTR, 2015		1ST QTR, 2016	
	----	ORDS	----	ORDS	----	ORDS	----	ORDS	----	ORDS
ADOP/PAT	----	93	----	100	----	117	----	81	----	59
DOM. VIOL.	----	5	----	8	----	3	----	2	----	1
OTH. CIVIL	----	4436	----	4208	----	3800	----	3718	----	2948
DOMESTIC	----	1412	----	1410	----	1243	----	1343	----	1231
PROB/GDN	----	849	----	909	----	947	----	909	----	932
SUBTOTAL	----	6795	----	6635	----	6110	----	6053	----	5171
DAILY AVG.	----	111	----	109	----	100	----	99	----	85

SEATTLE MAIL-IN	1ST QTR, 2015		2ND QTR, 2015		3RD QTR, 2015		4TH QTR, 2015		1ST QTR, 2016	
	----	ORDS	----	ORDS	----	ORDS	----	ORDS	----	ORDS
ADOP/PAT	----	0	----	2	----	1	----	0	----	0
DOM. VIOL.	----	0	----	0	----	0	----	0	----	0
OTH. CIVIL	----	95	----	158	----	205	----	151	----	148
DOMESTIC	----	43	----	36	----	40	----	29	----	51
PROB/GDN	----	77	----	66	----	110	----	78	----	89
SUBTOTAL	----	215	----	262	----	356	----	258	----	288
DAILY AVG.	----	4	----	4	----	6	----	4	----	5

Note: Ex Parte via Clerk started in January 2009.

Table 9 (cont). Ex Parte Activity

KENT	1ST QTR, 2015		2ND QTR, 2015		3RD QTR, 2015		4TH QTR, 2015		1ST QTR, 2016	
	HRGS	ORDS	HRGS	ORDS	HRGS	ORDS	HRGS	ORDS	HRGS	ORDS
ADOP/PAT	26	84	31	104	35	119	29	93	29	99
DOM. VIOL.	5	528	7	536	5	602	1	490	1	515
OTH. CIVIL	280	412	277	444	326	539	328	493	246	416
DOMESTIC	321	1370	406	1550	398	1468	373	1336	294	1179
PROB/GDN	413	791	460	852	399	935	452	906	385	835
SUBTOTAL	1045	3185	1181	3486	1163	3663	1183	3318	955	3044
DAILY AVG.	17	52	19	57	19	60	19	54	16	50

KENT VIA CLERK (starting Jan 2009)	1ST QTR, 2015		2ND QTR, 2015		3RD QTR, 2015		4TH QTR, 2015		1ST QTR, 2016	
	----	ORDS	----	ORDS	----	ORDS	----	ORDS	----	ORDS
ADOP/PAT	----	25	----	58	----	34	----	37	----	24
DOM. VIOL.	----	3	----	4	----	3	----	3	----	5
OTH. CIVIL	----	2556	----	2123	----	2430	----	2576	----	2131
DOMESTIC	----	474	----	498	----	519	----	389	----	485
PROB/GDN	----	332	----	309	----	286	----	293	----	326
SUBTOTAL	----	3390	----	2992	----	3272	----	3298	----	2971
DAILY AVG.	----	56	----	49	----	54	----	54	----	49

KENT MAIL-IN	1ST QTR, 2015		2ND QTR, 2015		3RD QTR, 2015		4TH QTR, 2015		1ST QTR, 2016	
	----	ORDS	----	ORDS	----	ORDS	----	ORDS	----	ORDS
ADOP/PAT	----	1	----	0	----	2	----	1	----	1
DOM. VIOL.	----	0	----	0	----	0	----	0	----	0
OTH. CIVIL	----	34	----	54	----	89	----	46	----	41
DOMESTIC	----	18	----	14	----	21	----	11	----	2
PROB/GDN	----	28	----	43	----	30	----	31	----	34
SUBTOTAL	----	81	----	111	----	142	----	89	----	78
DAILY AVG.	----	1	----	2	----	2	----	1	----	1

ALL SEATTLE AND KENT	1ST QTR, 2015		2ND QTR, 2015		3RD QTR, 2015		4TH QTR, 2015		1ST QTR, 2016	
	HRGS	ORDS	HRGS	ORDS	HRGS	ORDS	HRGS	ORDS	HRGS	ORDS
GRAND TOTAL	3204	18889	3255	18678	3302	19069	3351	18797	2989	17156
DAILY AVERAGE	52.5	309.7	53.4	306.2	54.1	312.6	54.9	308.1	49.0	281.2

Note: Ex Parte via Clerk started in January 2009.

Appendix Glossary and Definition

General Definition

Active Status

A case is active if it is not on suspense status (see Suspense Status).

Case

A case is defined as a filing with an assigned case number (or a case number plus a defendant connection code in pre-1990 criminal filings).

Completion

A case is completed when dispositive document is filed with the court following resolution.

Jury Trial

A hearing is reported as a jury trial if the jury is impaneled.

New Case

A new case is an original filing with new case number assigned.

Non-Jury Trial

A hearing is reported as a non-jury trial if an opening statement is made, waived, or reserved. A juvenile fact finding hearings is reported as a non-jury trial.

Pending Case

A case is defined as pending if it is unresolved and active (not in suspense).

Reactivated Case

A case returns to active status from suspense status during the reporting period.

Re-opened Cases

A case is re-opened if it has been previously completed but returns to the court for supplement or change of the original case resolution. A re-opened case does not have a new case number. Only resolved cases can be "re-opened". (Note: measurement not available as of July 1996. SCOMIS capacity may exist after conversion to DB2 in the future).

Resolution

A case is resolved if all issues in the complaint are fully adjudicated.

Suspended Case

A case is placed in suspense status from active status during the reporting period.

Suspense Status

A case is on suspense status if it is on warrant, appeal, stay, mediation, arbitration ("Deferred Prosecution" is not a suspense status, but is treated as a resolution).

Trial

A hearing set before a judge or jury in which all the issues in the case are meant to be resolved. A trial normally includes opening statements to the court or jury stating what the evidence will show, introduction of witnesses and exhibits for direct and cross examination, final arguments to the court or jury in which counsel argue both the evidence and the law, and judgment by the court or jury stating what the facts of the case are and what law applies to the facts. In a jury case, it also includes the selection of the jury. A trial can be held

for one or more cases. A single trial may be held to adjudicate more than one case (as defined above).

Post-resolution Modifications

In this report, we also report the post-resolution modifications for case type 3 (domestic) and 5 (paternity). These numbers are based on the tracks (DMOD and DTBA) opened after the original resolution date (i.e., if the track beginning date is after the resolution date).

Section I. Filing Activity

Additional Filings with Clerk

Filings with clerk without assigning a SCOMIS case number. This reporting category consists of search warrants, wire taps, extradition, oaths and orders pertaining to Pro Tem judge/commissioners/Court

Reporters/Bailiffs, and other "non-case" filings as recorded under 12050 system.

Annual Filings

Total number of new case filings during the calendar year (January 1 to December 31).

Adoption Cases

This reporting category includes the following "cause-of-action" codes within SCOMIS case type 5:

- Relinquishment (REL)
- Termination of Parent/Child Relationship (TER)
- Adoption (ADP)
- Miscellaneous (MSC)
- Name Change - Confidential (CHN)
- Initial Pre-Placement Report Filed with Clerk (PPR)

General Civil Cases

"General Civil" cases include all civil matters other than Domestic, Probate, Guardianship, Adoption, Paternity and appeals from courts of limited jurisdiction and "Matters Filed with Clerk". "General civil" cases include small claims as identified by the "Small Claim Track". This reporting category includes the following "cause-of-action" codes within SCOMIS case type 2:

- Administrative Law Review (ALR)
- Change of Name - Non-Confidential (CHN)
- Collection (COL)
- Commercial (COM)
- Condemnation (CON)
- Domestic Violence Protection (DVP)
- Emancipation of Minor (EOM)
- Foreclosure (FOR)
- Civil Harassment (HAR)
- Injunction (INJ)
- Other Malpractice (MAL)
- Medical Malpractice (MED)
- Meretricious Relationship (MER)
- Malicious Harassment (MHA)
- Miscellaneous (MSC)
- Minor Settlement (MST) - as of 10/1/96, under Guardianship
- Petition of Civil Commitment- Sexual Predator (PCC)
- Property Fairness (PFA)

- Personal Injury (PIN)
- Property Damage (PRP)
- Quiet Title (QTI)
- Small Claims (LCA/LCI on “Small Claim Track”)
- Seizure of Property from the Commission of a Crime (SPC)
- Seizure of Property Resulting from a Crime (SPR)
- Tort Motor Vehicle (TMV)
- Tort Other (TTO)
- Unlawful Detainer (UND)
- Wrongful Death (WDE)
- Writ of Habeas Corpus (WHC)
- Miscellaneous Writ (WMW)
- Writ of Mandamus (WRM)
- Writ of Restitution (WRR)
- Writ of Review (WRV)

Civil RALJ Cases

Civil appeals from courts of limited jurisdiction (excluding small claims as identified by the “Small Claim Track”). Civil RALJ includes the following “cause-of-action” reporting categories:

- Lower Court Appeal - Civil and “Not a Small Claim”
- Lower Court Appeal - Infraction and “Not a Small Claim”

Note: The Civil RALJ cases are determined based on both SCOMIS “cause-of-action” code (LCA and LCI) within SCOMIS case type 2 and the “Small Claim Track”.

Criminal Cases (excl. RALJ)

Adult criminal cases, excluding appeals from courts of limited jurisdiction. This reporting category includes the following crime categories within SCOMIS case type 1:

- Homicide
- Sex Crime
- Robbery
- Assault
- Theft/Burglary
- Motor Vehicle Theft
- Controlled Substance
- Other Felony
- Others (Misdemeanor, Non-charge Case)

Criminal RALJ Cases

Criminal appeals from courts of limited jurisdiction. This reporting category includes all SCOMIS case type 1 cases that have an appeal from lower court field of “Yes”.

Domestic Cases

This reporting category includes the following “cause-of-action” codes within SCOMIS case type 3:

- Annulment – Invalidity (INV)
- Child Custody (CUS)
- Dissolution With Children Of The Marriage (DIC)
- Dissolution With No Children Of The Marriage (DIN)
- Dissolution of Domestic Partnership – With Children (DPC)
- Dissolution of Domestic Partnership – With No Children (DPN)
- Foreign Judgment (FJU)
- Invalidity – Domestic Partnership (INP)
- Mandatory Wage Assignment (MWA)
- Miscellaneous (MSC)
- Modification (MOD)
- Modification – Support Only (MDS)
- Out-Of-State Child Custody (OSC)
- Parenting Plan / Child Support (PPS)
- Reciprocal, Respondent In-County (RIC)
- Reciprocal, Respondent Out-of-County (ROC)
- Legal Separation (SEP)
- Legal Separation – Domestic Partnership (SPD)

Guardianship Cases

This reporting category includes the following “cause-of-action” codes within SCOMIS case type 4:

- Guardianship/Estate (G/E)
- Guardianship (GND)
- Limited Guardianship (LGD)
- Minor Settlement (MST)

Juvenile ARY/CHINS Cases

Juvenile dependency cases, excluding truancy cases and DEP cause code. This reporting category includes following “cause-of-action” codes within SCOMIS case type 7:

- Alternative Residential Placement (ARP)
- At-Risk Youth (ARY)
- Child in Need of Service (CNS)

Juvenile Dependency Cases

This reporting category includes following “cause-of-action” codes within SCOMIS case type 7:

- Dependency (DEP)
- Termination (TER)
- Developmental Disability (DDP)
- Guardianship Foster Children (GFC)
- Reinstatement of Parental Rights (RPR)
- Extension of Foster Care (EFC)
- Relative Visitation (RVS)

Juvenile Offender Cases

This reporting category includes the following crime categories in SCOMIS case type 8:

- Homicide
- Sex Crime
- Robbery
- Assault
- Theft/Burglary
- Motor Vehicle Theft
- Controlled Substance
- Other Felony
- Others (Misdemeanor, Non-charge Case)

Juvenile Truancy Cases

Mandatory truancy filings started on 10/01/1995. This reporting category includes the following “cause-of-action” code within SCOMIS case type 7:

- Truancy (TRU)

Matters Filed with Clerk

Filings with clerk (case numbers assigned), but requiring little or no judicial action. This reporting category includes the following “cause-of-action” codes within SCOMIS case type 2:

- Abstract of Judgment (ABJ)
- Foreign Judgment (FJU)
- Tax Warrant (TAX)
- Transcripts of Judgment (TRJ)

Mental Illness Cases

This reporting category includes all “cause-of-action” codes within SCOMIS case type 6:

- Alcoholic Treatment (ALT)
- Mental Illness - Adult (MI)
- Mental Illness - Juvenile (MIJ)

Paternity Cases

This reporting category includes the following “cause-of-action” codes within SCOMIS case type 5:

- Modification (MOD)
- Paternity (PAT)
- Paternity/URES/UISA (PUR)

Probate Cases

This reporting category includes the following “cause-of-action” codes within SCOMIS case type 4:

- Absentee (ABS)
- Disclaimer (DSC)
- Estate (EST)
- Foreign Will (FNW)
- Miscellaneous (MSC)
- Non-Probate Notice to Creditors (NNC)
- Will Only (WLL)

Total Cases

New cases with case numbers assigned, excluding “Matters Filed with Clerk” and “Additional Filings with Clerk”.

Year-to-Date Filings

Total number of new filings since the beginning of calendar year (January 1) to the end of reporting period.

Section II. Resolution Category

Adoption - Resolved by Trial

Court Decision after Non-Jury Trial (CDAT)

Adoption - Uncontested

Consolidated Case (CONS)
Uncontested Resolution (UNDS)

Adoption - Settlement/Dismissal

Closed by Court Order after a Hearing (CLCO)
Dismissal without Trial (DSM)
Dismissal after Non-Jury Trial Commencement (DAT)
Settled after Non-Jury Trial Commencement (SAT)
Settled by Parties/Agreed Judgment (STPR)

Adoption - Closure by Clerk

Dismissal/Closure by Clerk (DSCK)

Adoption - Others

Change of Venue/Jurisdiction (CHV)
Other Non-specified Resolutions

Civil - Resolved by Jury Trial

Jury Verdict after Trial (JVAT)

Civil - Resolved by Non-Jury Trial

Court Decision after Non-Jury Trial (CDAT)

Civil - Summary Judgment

Summary Judgment (SMJG)

Civil - Default/Uncontested

Consolidated Case (CONS)
Default Judgment (DFJG)
Uncontested Resolution (UNDS)

Civil - Arbitration

Settle by Arbitration (ARBA)

Civil - Settlement/Dismissal

Closed by Court Order after a Hearing (CLCO)
Dismissal after Non-Jury Trial (DAT)
Dismissal after Jury Trial (DJT)
Dismissal (DSM)
Settled after Non-Jury Trial Commencement (SAT)
Settled after Jury Trial Commencement (SJT)
Settled by Parties/Agreed Judgment (STPR)

Civil - Closure by Clerk

Dismissal/Closure by Clerk (DSCK)

Civil - Others

Transferred to Federal bankruptcy Court (BANK)
Change of Venue/Jurisdiction (CHV)
Other Non-specified Resolutions

Civil RALJ - RALJ Decision

Court Decision to Affirm Appeal/review (CDTA)
Court Decision to Modify Appeal/Review (CDTM)
Court Decision to Reverse Appeal/review (CDTR)

Civil RALJ - Dismissal

Dismissal and Remand of Appeal/Review (DSRM)

Civil RALJ - Others

Other Non-specified Resolutions

Comparison with Court Standard

Percentage of cases actually falling within the Court’s standard benchmark.

Court Standard

Benchmarks set by a state advisory committee and adopted by the court indicating percentage of cases to be resolved at certain age (in months, 1 month = 30 days as used in the Advisory Case Processing Time Standard as published in the Court Rule).

Court standard is based on timelines as suggested by State Advisory Committee. For a case type with no time standard, the standard for a similar case type is adopted if appropriate.

Criminal: 90% by 4 months, 98% by 6 months, 100% by 9 months.

Civil: 90% by 12 months, 98% by 18 months, 100% by 24 months.

Domestic: 90% by 8 months, 98% by 10 months, 100% by 14 months.

Probate/Guardianship: 90% by 8 months, 98% by 18 months, 100% by 36 months.

Adoption/Paternity: 90% by 8 months, 98% by 10 months, 100% by 14 months.

Mental Illness/Juvenile Truancy: No standard yet.

Juvenile Dependency: 90% by 8 months, 98% by 10 months, 100% by 14 months.

Juvenile Offender: 90% by 4 months, 98% by 6 months, 100% by 9 months.

Criminal RALJ/Civil RALJ: 90% by 4 months, 98% by 5 months, 100% by 6 months.

Criminal - Resolved by Jury Trial

Acquittal by Jury (AQJV)
Convicted - Jury Verdict after Trial (CVJV)

Criminal - Resolved by Non-Jury Trial

Acquittal by Court (AQCT)
Convicted - Court Decision after Non-Jury Trial (CVCT)

Criminal - Resolved by Guilty Plea

Guilty Plea (GP)
Guilty Plea after Non-Jury Trial Commencement (GPAT)
Guilty Plea after Jury Trial Commencement (GPJT)

Criminal - Dismissal

Dismissal after Non-Jury Trial Commencement (DAT)
Dismissal after Jury Trial Commencement (DJT)
Dismissal (DSM)

Criminal - Others

Change of Venue (CHV)
Consolidated Case (CONS)
Continued Order of Prosecution with Completion (CTOP)*
Deferred Prosecution (DFPD)
Dismissal/Closure by Clerk (DSCK)
Governor’s warrant (GW)
Not Guilty by Reason of Insanity (NGRI)
Uncontested Resolution (UNDS)
Waiver of Extradition (WE)
Other Non-specified Resolutions

* Note: For adult criminal cases, “CTOP” does not necessarily constitute resolution. An adult criminal case with a “CTOP” as resolution code is counted as a resolved case only if a completion code exists along with the “CTOP”. If the resolution code is CTOP and there is no completion code, then the case is treated as unresolved. The primary reason for combining “CTOP” with a completion code is to determine resolution for drug court cases (CTOP is entered in the

SCOMIS resolution field as soon as a defendant enrolls in Drug Court). This rule on “CTOP” applies to adult criminal cases only.

Criminal RALJ - RALJ Decision

Court Decision to Affirm Appeal/review (CDTA)
Court Decision to Modify Appeal/Review (CDTM)
Court Decision to Reverse Appeal/review (CDTR)

Criminal RALJ - Dismissal

Dismissal and Remand of Appeal/Review (DSRM)

Criminal RALJ - Others

Other Non-specified Resolutions

Domestic - Resolved by Trial

Court Decision after Non-Jury Trial (CDAT)

Domestic - Default/Uncontested

Consolidated Case (CONS)
Default Judgment (DFJG)
Uncontested Resolution (UNDS)

Domestic - Settlement/Dismissal

Settled by Arbitration (ARBA)
Closed by Court Order after a Hearing (CLCO)
Dismissal after Non-Jury Trial Commencement (DAT)
Dismissal (DSM)
Settled after Non-Jury Trial Commencement (SAT)
Settled by Parties/Agreed Judgment (STPR)

Domestic - Closure by Clerk

Dismissal/Closure by Clerk (DSCK)

Domestic - Others

Change of Venue/Jurisdiction (CHV)
Summary Judgment (SMJG)
Other Non-specified Resolutions

Guardianship - Guardian Appointed

Guardian Appointed (PRGA)

Guardianship - Dismissal

Closed by Court Order after a Hearing (CLCO)
Dismissal (DSM)

Guardianship - Closure by Clerk

Dismissal/Closure by Clerk (DSCK)

Guardianship - Others

Change of Venue/Jurisdiction (CHV)
Consolidated Case (CONS)
Uncontested Resolution (UNDS)
Other Non-specified Resolutions

Juvenile Dependency - Finding of Dependency

Approved Petition (APP)

Juvenile Dependency - Dismissal

Dismissal (DSM)

Juvenile Dependency - Others

Change of Venue/Jurisdiction (CHV)
Consolidated Case (CONS)
Transfer of Jurisdiction (TRJU)
Other Non-specified Resolutions

Juvenile Offender - Resolved by Trial

Acquittal by Court (AQCT)
Convicted - Court Decision after Adjudictory Hearing (CVCT)

Juvenile Offender - Resolved by Guilty Plea

Guilty Plea before Adjudictory Hearing Commencement (GP)
Guilty Plea after Adjudictory Hearing Commencement (GPAT)

Juvenile Offender - Dismissal

Dismissal after Adjudictory Hearing Commencement (DAT)
Dismissal (DSM)

Juvenile Offender - Others

Change of venue (CHV)
Dismissal/Closure by Clerk (DSCK)
Consolidated Case (CONS)

Continued Prosecution (CTOP)
Decline of Jurisdiction (DECL)
Uncontested Resolution (UNDS)
Other Non-specified Resolutions

Juvenile Truancy - Finding of Truancy

Approved Petition (APP)

Juvenile Truancy - Dismissal

Dismissal (DSM)

Juvenile Truancy - Others

Change of Venue (CHV)
Consolidated Case (CONS)
Transfer of Jurisdiction (TRJU)
Other Non-specified Resolutions

Mental Illness - Court Decision to Commit

Court Decision to Commit (CDTC)

Mental Illness - Closed by Court

Closed by Court (CLCO)

Mental Illness - Dismissal

Dismissal (DSM)

Mental Illness - Others

Change of Venue/Jurisdiction (CHV)
Uncontested Resolution (UNDS)
Other Non-specified Resolutions

Paternity - Resolved by Trial

Court Decision after Non-Jury Trial (CDAT)

Paternity - Summary Judgment

Summary Judgment (SMJG)

Paternity - Default/Uncontested

Consolidated Case (CONS)
Default Judgment (DFJG)
Uncontested Resolution (UNDS)

Paternity - Settlement/Dismissal

Settled by Arbitration (ARBA)
Closed by Court Order after a Hearing (CLCO)
Dismissal after Non-Jury Trial Commencement (DAT)
Dismissal (DSM)
Settled after Non-Jury Trial Commencement (SAT)
Settled by Partied/Agreed Judgment (STPR)

Paternity - Closure by Clerk

Dismissal/Closure by Clerk (DSCK)

Paternity - Others

Change of Venue (CHV)
Other Non-specified Resolutions

Percentile

Percent of cases resolved at a given age. For example, if resolved cases had a 98 percentile of 12 months, it means that 98% of the cases were resolved within the age of 12 months, or conversely 2% of the cases were resolved after 12 months, not counting suspense time.

Probate - Personal Representative Appointed

Non-Intervention Probate (NIP)
Personal Representative Appointed (PRGA)

Probate - Dismissal

Closed by Court Order after a Hearing (CLCO)
Dismissal (DSM)

Probate - Closure by Clerk

Dismissal/Closure by Clerk (DSCK)

Probate - Others

Change of Venue (CHV)
Consolidated Case (CONS)
Uncontested Resolution (UNDS)
Other Non-specified Resolutions

Backlogged Cases

Active pending cases with an age exceeding the court-adopted time standard for each specific case type (recommended by the State Advisory Committee, see definition for *Court Standard*).

Section III. Pending Caseload

Adjustment

Adjustment made because of vacating of resolutions, or change in suspense status between two reporting period.

End Pending

Total number of pending cases at the end of reporting period.

Previous Pending

Total number of pending cases at the beginning of reporting period.

Resolution Rate

Resolution rate is defined as the ratio of number of resolutions to number of new filings (i.e., number of resolutions divided by number of new filings) during the reporting period. The resolution rate measures the relative pace of resolution in relation to the pace of new filings. A resolution rate of greater than 1 indicates the number of resolutions exceeds the number of new filings.

On-review Status

Cases that have been resolved (post-resolution) but still need court resources for periodic review and other remaining outstanding issues.

Probate (EST), Paternity (PAT) and Dependency (DEP): Resolved and not completed (paternity or dependency established, but outstanding issues remain).

Guardianship (GDN,LGD,G/E): Resolved and on tracks of G1,G2,G3,GE or GD; Minor Settlement (MST): Resolved with a future hearing date.

Section IV. Age of Pending Cases

Case Age

The age of a case is the time (number of days) since the filing date, less any suspense time if applicable.

Median Age

The median age is the time that 50% of the cases are under and 50% are above the given age. For example, if pending cases have a median age of 12 months, it means that 50% of the pending cases are within the age of 12 months, and 50% of pending cases are over 12 months. The median age is more robust to cases with extreme age values than the average age.

Suspense Time

Time (days) that a case is on suspense status before its resolution. If a case has more than one suspense between filing and resolution, the suspense time is the total from all suspenses. Time on suspense status after resolution (e.g., appeals) is not counted.