

King County Superior Court
Quarterly Statistical Report

Second Quarter 2016

Department of Judicial Administration
Prepared by: Shiquan Liao, Ph.D., Statistician

Release Date: July 20, 2016

Report #: QTR-2016-2

Table 1. Year-to-Date Filing Activity

King County Superior Court

Reporting Category	Year-to-Date and Annual Filing Activity ⁽¹⁾					2014-2015 change (+ means "increase")		% of 2015 Total Filing ⁽²⁾
	2012	2013	2014	2015	2016	Cases	Percentage	
Total (incl. RALJ)								
Year-to-Date Filing	28659	27123	26530	26580	26371	-209	-0.8%	
Annual Filing	54834	52755	52224	51652				
Criminal (excl. RALJ)								
Year-to-Date Filing	3123	2985	3177	3393	3241	-152	-4.5%	12.3%
Annual Filing	5942	6045	6213	6237				
General Civil (excl. Asbestos)								
Year-to-Date Filing	12976	11661	10826	10521	10712	+191	+1.8%	40.6%
Annual Filing	24477	22347	21378	21181				
Asbestos Cases (civil) ⁽³⁾								
Year-to-Date Filing	16	37	16	15	17	+2	+13.3%	0.1%
Annual Filing	36	63	40	36				
Domestic								
Year-to-Date Filing	3874	3990	4013	3868	3839	-29	-0.8%	14.6%
Annual Filing	7678	7897	7921	7559				
Probate								
Year-to-Date Filing	2858	3050	3010	3179	3186	+7	+0.2%	12.1%
Annual Filing	5492	5844	5920	6002				
Guardianship								
Year-to-Date Filing	451	444	486	466	508	+42	+9.0%	1.9%
Annual Filing	879	884	928	969				
Adoption								
Year-to-Date Filing	241	216	231	231	246	+15	+6.5%	0.9%
Annual Filing	511	483	470	460				
Paternity								
Year-to-Date Filing	633	519	376	337	272	-65	-19.3%	1.0%
Annual Filing	1161	931	702	650				
Mental Illness								
Year-to-Date Filing	1771	1724	1890	1986	2076	+90	+4.5%	7.9%
Annual Filing	3591	3678	3852	4004				
Juvenile Dependency (DEP)								
Year-to-Date Filing	425	443	546	383	398	+15	+3.9%	1.5%
Annual Filing	853	893	940	848				
Juvenile Termination (TER)								
Year-to-Date Filing	101	103	116	90	132	+42	+46.7%	0.5%
Annual Filing	200	209	325	214				
Juvenile ARY/CHINS/OTHERS								
Year-to-Date Filing	147	92	144	109	127	+18	+16.5%	0.5%
Annual Filing	242	168	285	217				
Juvenile Truancy								
Year-to-Date Filing	806	894	738	961	879	-82	-8.5%	3.3%
Annual Filing	1271	1236	1233	1369				
Juvenile Offender								
Year-to-Date Filing	1114	857	857	916	644	-272	-29.7%	2.4%
Annual Filing	2249	1808	1802	1649				
Criminal RALJ								
Year-to-Date Filing	94	88	76	85	64	-21	-24.7%	0.2%
Annual Filing	192	181	172	180				
Civil RALJ								
Year-to-Date Filing	29	18	24	30	30	0	0.0%	0.1%
Annual Filing	63	53	47	57				
Matters Filed with Clerk ⁽⁴⁾								
Year-to-Date Filing	7805	6655	6895	4845	4462	-383	-7.9%	
Annual Filing	15046	13763	12240	9581				

(1) New filings only (based on filing date), excluding re-opened cases (unable to count), and reflecting all documents received by 07/15/2016.

(2) New filings of each reporting category as percentage of "Year-to-Date Filing".

(3) "Matters Filed with Clerk" and "Additional Filings with Clerk" are not included in the "Total".

Chart 1-A. Quarterly Filing Activity
Total Judicial Cases Only ("Matters Filed with Clerk" excluded)

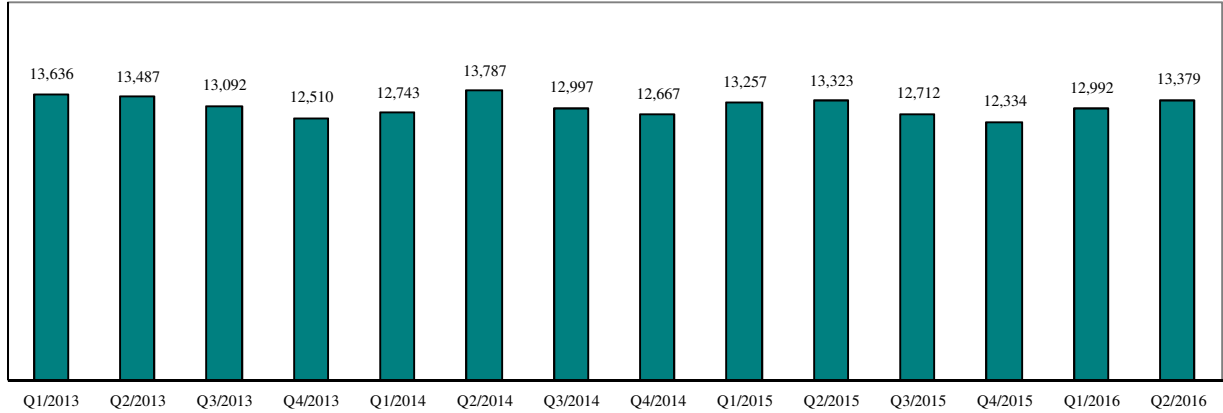
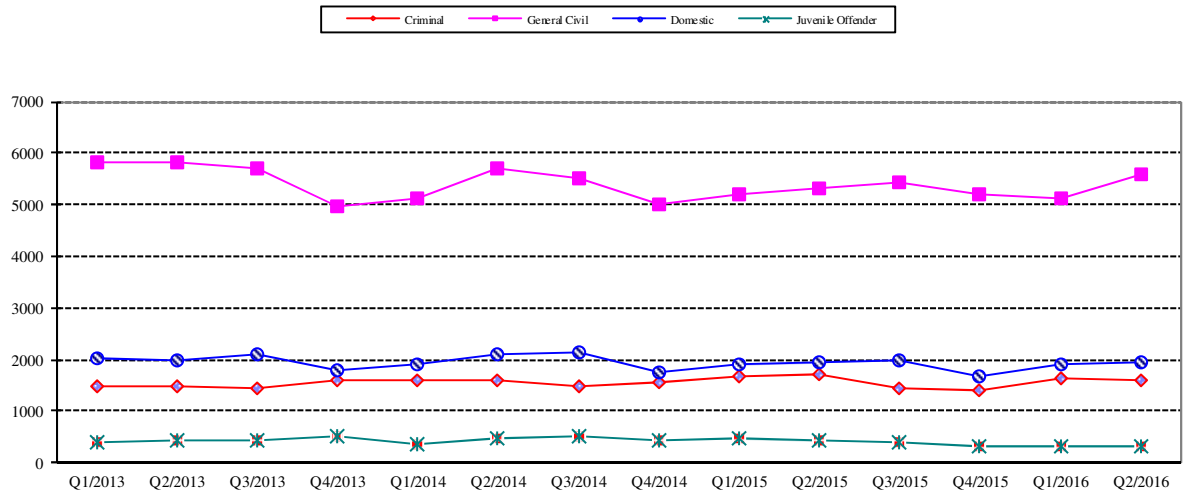


Chart 1-B. Quarterly Filings: Criminal, Domestic, General Civil and Juvenile Offender Cases Only



* Note: "General Civil" is specifically defined in this report. The category of "General Civil" does **not** include the following case types: domestic, probate, guardianship, adoption, paternity, mental illness, juvenile cases (dependency, at-risk youth, child-in-need of service, civil RALJ, and tax filings that don't require judicial resources ("matters filed with clerk")). Please check the Appendix for the cause codes in the "General Civil" category.

Table 1-A. Post-Resolution Modifications (Domestic and Paternity Cases)

Based on Tracks Opened After Original Resolution Date

		2014Q1			2014Q2			2014Q3			2014Q4			Year 2014		
Location	Case Type	DMOD	DTBA	Total	DMOD	DTBA	Total	DMOD	DTBA	Total	DMOD	DTBA	Total	DMOD	DTBA	Total
KNT	Domestic	144	43	187	172	66	238	183	46	229	164	42	206	663	197	860
	Paternity	15	4	19	11	7	18	13	4	17	16	6	22	55	21	76
KNT Total		159	47	206	183	73	256	196	50	246	180	48	228	718	218	936
SEA	Domestic	155	59	214	155	104	259	170	76	246	154	57	211	634	296	930
	Paternity	14	6	20	8	10	18	15	11	26	9	4	13	46	31	77
SEA Total		169	65	234	163	114	277	185	87	272	163	61	224	680	327	1007
KNT/SEA Total		328	112	440	346	187	533	381	137	518	343	109	452	1398	545	1943
		2015Q1			2015Q2			2015Q3			2015Q4			Year 2015		
Location	Case Type	DMOD	DTBA	Total	DMOD	DTBA	Total	DMOD	DTBA	Total	DMOD	DTBA	Total	DMOD	DTBA	Total
KNT	Domestic	166	37	203	188	49	237	168	31	199	166	32	198	688	149	837
	Paternity	14	4	18	18	8	26	15	3	18	8	6	14	55	21	76
KNT Total		180	41	221	206	57	263	183	34	217	174	38	212	743	170	913
SEA	Domestic	150	56	206	145	85	230	171	44	215	146	49	195	612	234	846
	Paternity	8	8	16	8	7	15	7	8	15	5	4	9	28	27	55
SEA Total		158	64	222	153	92	245	178	52	230	151	53	204	640	261	901
KNT/SEA Total		338	105	443	359	149	508	361	86	447	325	91	416	1383	431	1814
		2016Q1			2016Q2			2016Q3			2016Q4			Year 2016		
Location	Case Type	DMOD	DTBA	Total	DMOD	DTBA	Total	DMOD	DTBA	Total	DMOD	DTBA	Total	DMOD	DTBA	Total
KNT	Domestic	174	29	203	167	56	223							341	85	426
	Paternity	16	6	22	12	6	18							28	12	40
KNT Total		190	35	225	179	62	241							369	97	466
SEA	Domestic	154	71	225	154	76	230							308	147	455
	Paternity	6	9	15	11	8	19							17	17	34
SEA Total		160	80	240	165	84	249							325	164	489
KNT/SEA Total		350	115	465	344	146	490							694	261	955

* DMOD = parenting plan modification track; DTBA = support modification track.

Table 2. Number of Cases Resolved and Resolution Category (%)

King County Superior Court

Reporting Category	Q3/14	Q4/14	Q1/15	Q2/15	Q3/15	Q4/15	Q1/16	Q2/16*
Total Resolutions (excl. "Matters Filed with Clerk")	13855	13195	13228	15990	13497	13206	13113	13387
Criminal (excl. RALJ): # Resolved	1540	1535	1507	1731	1635	1532	1529	1444
Resolved by Jury Trial	3.2%	3.4%	3.6%	2.8%	2.6%	3.3%	4.3%	2.3%
Resolved by Non-Jury Trial	1.0%	2.0%	0.7%	0.2%	0.5%	0.5%	1.1%	1.0%
Resolved by Guilty Plea	80.6%	80.4%	78.0%	80.2%	81.7%	80.6%	80.1%	81.1%
Dismissal	15.0%	13.8%	17.7%	16.7%	14.7%	15.3%	13.8%	15.0%
Others	0.3%	0.5%	0.1%	0.2%	0.4%	0.4%	0.2%	0.6%
General Civil: # Resolved	6111	5650	5718	5639	5933	5853	5435	5872
Resolved by Jury Trial	0.4%	0.6%	0.7%	0.5%	0.5%	0.5%	0.6%	0.4%
Resolved by Non-Jury Trial	0.3%	0.4%	0.2%	0.6%	0.5%	0.3%	0.3%	0.4%
Summary Judgment	2.2%	2.2%	1.5%	2.1%	1.6%	1.8%	2.0%	2.0%
Default/ Uncontested	41.3%	37.4%	40.1%	39.1%	41.0%	42.1%	38.1%	40.2%
Arbitration	2.3%	2.7%	3.0%	3.0%	2.9%	2.7%	3.1%	3.3%
Settlement/Dismissal	49.7%	53.0%	51.1%	51.8%	50.4%	48.3%	52.6%	50.6%
Closure by Clerk	2.3%	2.3%	2.4%	2.1%	2.2%	3.6%	2.6%	2.5%
Others	1.5%	1.4%	0.9%	0.9%	0.8%	0.7%	0.8%	0.7%
Asbestos Cases (civil): # Resolved	14	14	25	9	12	10	9	14
Resolved by Jury Trial	7.1%	0.0%	0.0%	0.0%	0.0%	0.0%	11.1%	0.0%
Resolved by Non-Jury Trial	0.0%	0.0%	0.0%	0.0%	0.0%	0.0%	0.0%	0.0%
Summary Judgment	7.1%	14.3%	4.0%	0.0%	0.0%	50.0%	22.2%	0.0%
Default/ Uncontested	14.3%	14.3%	0.0%	11.1%	8.3%	0.0%	0.0%	7.1%
Arbitration	0.0%	0.0%	0.0%	0.0%	0.0%	0.0%	0.0%	0.0%
Settlement/Dismissal	64.3%	57.1%	64.0%	55.6%	66.7%	20.0%	55.6%	85.7%
Closure by Clerk	7.1%	14.3%	28.0%	33.3%	25.0%	30.0%	11.1%	7.1%
Others	0.0%	0.0%	4.0%	0.0%	0.0%	0.0%	0.0%	0.0%
Domestic: # Resolved	1963	1994	1915	2031	1959	2019	1810	1895
Resolved by Trial	4.3%	3.7%	3.9%	5.4%	5.2%	4.4%	4.0%	4.6%
Default/ Uncontested	9.0%	8.7%	11.3%	10.5%	10.0%	10.3%	10.1%	9.8%
Settlement /Dismissal	86.2%	87.2%	84.2%	83.4%	83.6%	84.5%	84.5%	84.3%
Closure by Clerk	0.3%	0.4%	0.3%	0.5%	0.5%	0.6%	0.8%	0.6%
Others	0.2%	0.1%	0.4%	0.2%	0.8%	0.3%	0.6%	0.6%
Probate: # Resolved	1454	1448	1575	1507	1431	1397	1561	1549
Personal Rep. Appointed	69.4%	71.7%	72.1%	72.3%	72.6%	72.8%	72.7%	72.3%
Dismissal	2.6%	3.3%	1.9%	2.7%	3.6%	4.3%	2.6%	2.8%
Closure by Clerk	0.1%	0.2%	0.0%	0.0%	0.0%	0.6%	0.1%	0.0%
Others	27.9%	24.9%	26.0%	25.0%	23.8%	22.3%	24.6%	24.9%
Guardianship: # Resolved	237	232	204	235	228	228	220	258
Guardian Appointed	52.3%	48.7%	56.4%	51.1%	54.4%	54.8%	55.5%	55.8%
Dismissal	45.6%	51.3%	43.6%	46.8%	43.9%	44.7%	43.2%	43.0%
Closure by Clerk	0.0%	0.0%	0.0%	0.0%	0.0%	0.0%	0.0%	0.0%
Others	2.1%	0.0%	0.0%	2.1%	1.8%	0.4%	1.4%	1.2%
Adoption: # Resolved	110	139	97	130	106	131	116	113
Resolved by Trial	0.9%	0.7%	0.0%	0.0%	0.0%	0.8%	0.0%	0.9%
Uncontested	7.3%	3.6%	11.3%	2.3%	7.6%	3.1%	9.5%	6.2%
Settlement /Dismissal	90.9%	95.0%	87.6%	97.7%	91.5%	93.9%	90.5%	92.9%
Closure by Clerk	0.0%	0.0%	0.0%	0.0%	0.0%	0.8%	0.0%	0.0%
Others	1.8%	0.7%	1.0%	0.0%	0.9%	1.5%	0.0%	0.0%
Paternity: # Resolved	193	171	154	161	176	153	171	140
Resolved by Trial	0.5%	1.2%	2.6%	3.1%	4.6%	0.0%	1.2%	2.1%
Summary Judgment	50.8%	53.8%	39.6%	41.0%	48.9%	45.8%	52.1%	39.3%
Default/ Uncontested	19.2%	18.1%	22.7%	25.5%	19.3%	24.2%	17.0%	25.7%
Settlement/Dismissal	29.5%	26.9%	35.1%	29.8%	27.3%	29.4%	29.8%	32.9%
Closure by Clerk	0.0%	0.0%	0.0%	0.0%	0.0%	0.0%	0.0%	0.0%
Others	0.0%	0.0%	0.0%	0.6%	0.0%	0.7%	0.0%	0.0%

Reflecting all documents received by 07/15/2016.

Table 2 (cont.). Number of Cases Resolved and Resolution Category (%)

King County Superior Court

Reporting Category	Q3/14	Q4/14	Q1/15	Q2/15	Q3/15	Q4/15	Q1/16	Q2/16*
Mental Illness: # Resolved	1016	963	922	1005	1128	957	1014	1034
Court Decision to Commit	66.5%	63.9%	67.7%	62.9%	63.4%	60.4%	64.2%	65.3%
Closed by Court	0.0%	0.0%	0.0%	0.0%	0.0%	0.0%	0.0%	0.0%
Dismissal	18.7%	22.5%	19.6%	19.7%	18.2%	19.8%	20.6%	21.3%
Others	14.8%	13.6%	12.7%	17.4%	18.4%	19.9%	15.2%	13.4%
Juv. Dependency: # Resolved	310	202	196	208	153	159	172	187
Finding of Dependency	233	133	70.9%	76.0%	67.3%	80.5%	72.9%	81.8%
Dismissal	77	69	27.6%	23.6%	32.0%	19.5%	26.7%	18.2%
Others	0	0	1.5%	0.5%	0.7%	0.0%	1.2%	0.0%
Juv. Terminations: # Resolved	59	51	74	50	49	61	62	48
Finding of Dependency	48	43	94.6%	88.0%	77.6%	77.0%	74.2%	79.2%
Dismissal	10	10	5.4%	12.0%	22.4%	23.0%	25.8%	20.8%
Others	1	0	0.0%	0.0%	0.0%	0.0%	0.0%	0.0%
Juv. ARY/CHINS/OTHER:# Resolved	66	66	56	66	61	36	63	45
Approve of Petition	65.1%	63.6%	51.8%	53.0%	39.3%	52.8%	38.1%	28.9%
Dismissal	34.9%	36.4%	46.4%	47.0%	60.7%	47.2%	61.9%	71.1%
Others	0.0%	0.0%	1.8%	0.0%	0.0%	0.0%	0.0%	0.0%
Juvenile Truancy: # Resolved	298	203	270	288	124	264	524	324
Approve of Petition	0.7%	9.9%	45.6%	37.2%	0.8%	1.9%	5.0%	0.6%
Dismissal	99.3%	90.2%	54.4%	62.9%	99.2%	98.1%	95.0%	99.4%
Others	0.0%	0.0%	0.0%	0.0%	0.0%	0.0%	0.0%	0.0%
Juvenile Offender: # Resolved	429	480	456	418	451	363	364	413
Resolved by Trial (Fact Finding)	7.2%	5.4%	6.6%	4.1%	3.8%	1.1%	1.4%	4.6%
Resolved by Guilty Plea	30.8%	33.3%	32.5%	35.4%	28.4%	34.7%	37.4%	36.3%
Dismissal	37.8%	46.5%	44.5%	41.6%	43.7%	46.3%	40.9%	43.1%
Deferred Disposition (DDSP)	19.8%	11.7%	12.9%	15.3%	17.3%	13.2%	15.1%	12.6%
Others (including Deferred Prosecution)	4.4%	3.1%	3.5%	3.6%	6.9%	4.7%	5.2%	3.4%
Criminal RALJ: # Resolved	41	32	45	55	39	35	48	39
RALJ Decision	56.1%	78.1%	71.1%	69.1%	56.4%	54.3%	58.3%	79.5%
Dismissal	36.6%	21.9%	26.7%	29.1%	35.9%	45.7%	35.4%	10.3%
Others	7.3%	0.0%	2.2%	1.8%	7.7%	0.0%	6.3%	10.3%
Civil RALJ: # Resolved	14	17	14	18	12	8	15	12
RALJ Decision	71.4%	41.2%	35.7%	27.8%	16.7%	12.5%	46.7%	50.0%
Dismissal	21.4%	58.8%	50.0%	55.6%	83.3%	62.5%	46.7%	41.7%
Others	7.2%	0.0%	14.3%	16.7%	0.0%	25.0%	6.7%	8.3%

* Reflecting all documents received by 07/15/2016.

Chart 2-A. Quarterly Resolutions
Total Judicial Cases Only ("Matters Filed with Clerk" excluded)

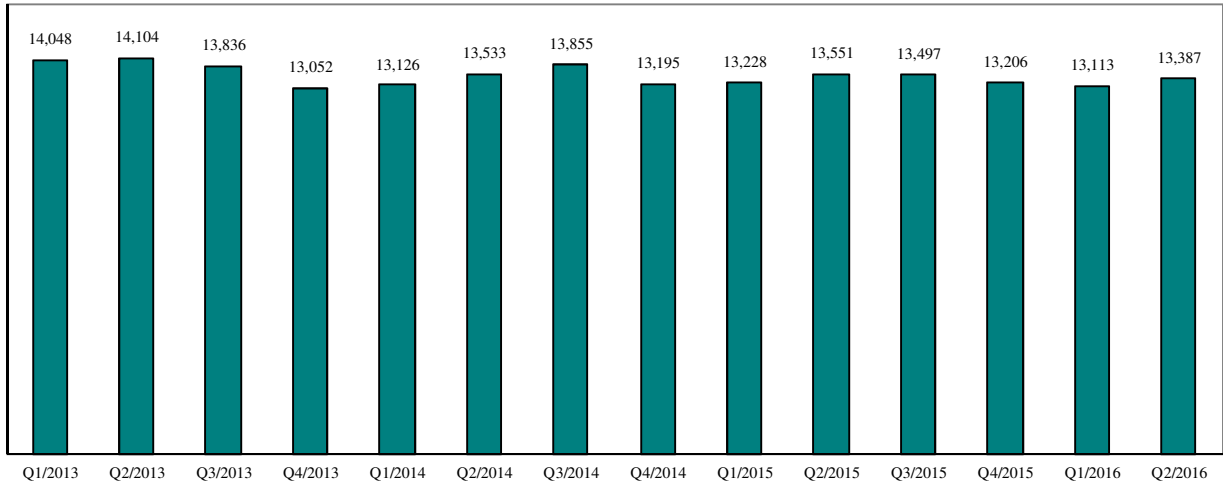
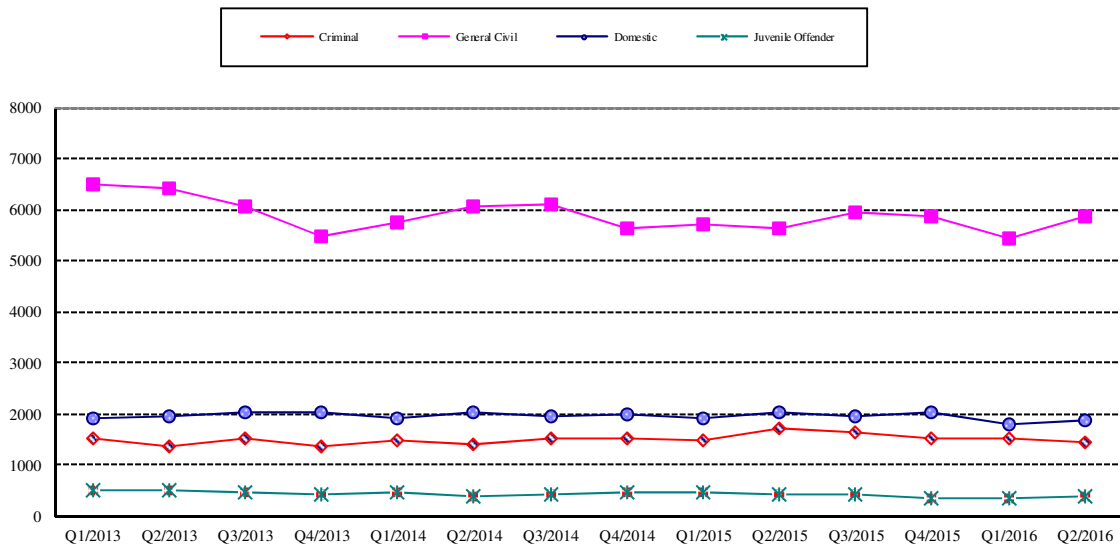


Chart 2-B. Quarterly Resolutions: Criminal, Dmestic, General Civil and Juvenile Offender Cases Only



* Note: "General Civil" is specifically defined in this report. The category of "General Civil" does **not** include the following case types: domestic, probate, guardianship, adoption, paternity, mental illness, juvenile cases (dependency, at-risk youth, child-in-need of service), civil RALJ, and tax filings that don't require judicial resources ("matters filed with clerk"). Please check the Appendix for the cause codes in the "General Civil" category.

Table 3. Age of Resolved Cases
King County Superior Court

Reporting Category	Age of Cases at Resolution							
	Q3/14	Q4/14	Q1/15	Q2/15	Q3/15	Q4/15	Q1/16	Q2/16*
Criminal (excl. RALJ)								
Age (days)								
50% Cases Resolved by Day	117	118	124	105	112	113	120	111
90% Cases Resolved by Day	345	342	366	343	326	306	364	346
Comparison with Court Standard of								
90% in 4 months	51%	51%	49%	56%	53%	53%	50%	54%
98% in 6 months	71%	70%	67%	72%	72%	73%	69%	71%
100% in 9 months	84%	86%	82%	86%	85%	88%	84%	86%
General Civil ⁽¹⁾								
Age (days)								
50% Cases Resolved by Day	31	35	30	36	31	35	38	33
90% Cases Resolved by Day	435	437	425	413	407	398	388	368
Comparison with Court Standard of								
90% in 12 months	85%	84%	84%	85%	85%	88%	86%	89%
98% in 18 months	95%	94%	96%	94%	95%	97%	96%	97%
100% in 24 months	98%	99%	99%	99%	98%	99%	99%	99%
Domestic								
Age (days)								
50% Cases Resolved by Day	148	164	171	175	161	149	176	172
90% Cases Resolved by Day	363	364	357	365	368	372	378	372
Comparison with Court Standard of								
90% in 8 months	68%	67%	66%	60%	64%	66%	61%	61%
98% in 10 months	76%	78%	76%	72%	75%	76%	73%	75%
100% in 14 months	94%	94%	95%	95%	94%	93%	92%	94%
Probate								
Age (days)								
50% Cases Resolved by Day	0	0	0	0	0	0	0	0
90% Cases Resolved by Day	15	17	7	13	19	19	12	13
Comparison with Court Standard of								
90% in 8 months	97%	99%	99%	98%	97%	97%	97%	97%
98% in 18 months	100%	100%	100%	100%	99%	99%	100%	99%
100% in 36 months	100%	100%	100%	100%	100%	100%	100%	100%
Guardianship								
Age (days)								
50% Cases Resolved by Day	67	68	65	65	71	62	70	68
90% Cases Resolved by Day	322	274	237	242	211	193	162	240
Comparison with Court Standard of								
90% in 8 months	89%	88%	89%	89%	91%	92%	96%	91%
98% in 18 months	97%	98%	97%	99%	98%	99%	100%	99%
100% in 36 months	100%	99%	99%	100%	100%	100%	100%	100%
Adoption								
Age (days)								
50% Cases Resolved by Day	40	56	79	70	42	55	62	66
90% Cases Resolved by Day	943	230	504	414	298	211	499	444
Comparison with Court Standard of								
90% in 8 months	86%	90%	81%	84%	90%	89%	80%	86%
98% in 10 months	89%	90%	84%	87%	93%	91%	84%	86%
100% in 14 months	89%	96%	88%	91%	95%	94%	89%	85%
Paternity								
Age (days)								
50% Cases Resolved by Day	155	145	141	139	135	139	164	142
90% Cases Resolved by Day	292	286	309	303	307	272	306	307
Comparison with Court Standard of								
90% in 8 months	83%	82%	78%	76%	76%	84%	73%	79%
98% in 10 months	94%	93%	87%	89%	90%	94%	88%	89%
100% in 14 months	97%	98%	96%	96%	98%	98%	97%	98%

Table 3 (cont.) Age of Resolved Cases

King County Superior Court

Reporting Category	Age of Cases at Resolution							
	Q3/14	Q4/14	Q1/15	Q2/15	Q3/15	Q4/15	Q1/16	Q2/16*
Mental Illness**								
Age (days)								
50% Cases Resolved by Day	2	3	3	4	4	4	3	4
90% Cases Resolved by Day	10	10	12	14	18	21	15	12
Juvenile Dependency (DEP)								
Age (days)								
50% Cases Resolved by Day	115	121	111	121	89	125	85	104
90% Cases Resolved by Day	402	253	312	250	217	221	218	230
Comparison with Court Standard of								
90% in 8 months	79%	89%	85%	90%	90%	94%	92%	93%
98% in 10 months	82%	92%	91%	95%	92%	95%	97%	96%
100% in 14 months	91%	97%	98%	99%	94%	98%	99%	96%
Juvenile Termination (TER)								
Age (days)								
50% Cases Resolved by Day	152	131	138	182	154	106	163	259
90% Cases Resolved by Day	346	321	263	282	382	350	406	665
Comparison with Court Standard of								
90% in 8 months	68%	81%	83%	80%	73%	81%	68%	45%
98% in 10 months	83%	89%	94%	94%	89%	84%	81%	61%
100% in 14 months	95%	100%	99%	96%	94%	97%	92%	69%
Juv ARY/CHINS/OTHER								
Age (days)								
50% Cases Resolved by Day	35	34	80	37	103	35	55	53
90% Cases Resolved by Day	235	184	622	139	304	288	294	230
Comparison with Court Standard of								
90% in 8 months	93%	95%	87%	94%	73%	90%	86%	96%
98% in 10 months	100%	99%	89%	96%	88%	93%	91%	98%
100% in 14 months	100%	100%	89%	98%	97%	97%	94%	100%
Juvenile Truancy**								
Age (days)								
50% Cases Resolved by Day	36	108	128	133	182	269	341	371
90% Cases Resolved by Day	148	214	750	357	646	394	493	514
Juvenile Offender								
Age (days)								
50% Cases Resolved by Day	66	84	98	89	92	88	99	112
90% Cases Resolved by Day	236	241	267	257	273	257	235	340
Comparison with Court Standard of								
90% in 4 months	72%	63%	61%	66%	63%	66%	60%	53%
98% in 6 months	84%	80%	78%	83%	79%	79%	79%	73%
100% in 9 months	91%	93%	91%	91%	90%	91%	95%	87%
Criminal RALJ								
Age (days)								
50% Cases Resolved by Day	228	258	296	251	258	260	247	269
90% Cases Resolved by Day	353	407	725	456	438	421	636	510
Civil RALJ								
Age (days)								
50% Cases Resolved by Day	186	164	180	167	165	170	165	172
90% Cases Resolved by Day	299	352	272	216	336	249	280	225

* Reflecting all documents received by 07/15/2016.

** No standard yet.

Table 4. Active Pending Caseload Statistics

King County Superior Court

Reporting Category	Q3/14	Q4/14	Q1/15	Q2/15	Q3/15	Q4/15	Q1/16	Q2/16*
Total (incl. RALJ)								
Previous Pending (+)	19112	18951	18811	18603	18623	18333	17886	18216
New Filing (+)	12997	12667	13257	13323	12712	12334	12992	13373
Resolved (-)	13855	13195	13228	13551	13497	13206	13113	13387
End Pending	18951	18811	18630	18623	18333	17886	18216	18663
Resolution Rate**	1.066	1.042	0.998	1.017	1.062	1.071	1.009	1.001
Criminal (excl. RALJ)								
Previous Pending (+)	2966	2923	2866	2908	2882	2727	2619	2725
New Filing (+)	1465	1567	1682	1711	1446	1395	1647	1594
Resolved (-)	1540	1535	1507	1731	1635	1532	1529	1444
End Pending	2923	2866	2908	2882	2727	2619	2725	2849
Resolution Rate**	1.051	0.980	0.896	1.012	1.131	1.098	0.928	0.906
General Civil								
Previous Pending (+)	7542	7336	7079	7215	7036	6851	6691	6686
New Filing (+)	5527	5020	5213	5308	5448	5210	5110	5602
Resolved (-)	6111	5650	5718	5639	5933	5853	5435	5872
End Pending	7336	7079	7215	7036	6851	6691	6686	6803
Resolution Rate**	1.106	1.125	1.097	1.062	1.089	1.123	1.064	1.048
Asbestos Cases (civil) ⁽¹⁾								
Previous Pending (+)	70	71	69	57	54	60	56	55
New Filing (+)	14	9	9	6	18	2	8	9
Resolved (-)	14	14	25	8	12	10	9	14
End Pending	71	69	57	54	60	56	55	50
Resolution Rate**	1.000	1.556	2.778	1.333	0.667	5.000	1.125	1.556
Domestic								
Previous Pending (+)	4609	4802	4579	4520	4497	4562	4234	4336
New Filing (+)	2124	1773	1904	1964	1997	1694	1897	1942
Resolved (-)	1963	1994	1203	2031	1959	2019	1810	1895
End Pending	4802	4579	4520	4497	4562	4234	4336	4416
Resolution Rate**	0.924	1.125	1.006	1.034	0.981	1.192	0.954	0.976
Probate								
Previous Pending (+)	861	902	908	511	562	581	580	624
New Filing (+)	1474	1426	1652	1527	1422	1419	1586	1600
Resolved (-)	1454	1448	1575	1507	1431	1397	1561	1549
End Pending	902	908	511	562	581	580	624	703
Resolution Rate**	0.986	1.015	0.953	0.987	1.006	0.984	0.984	0.968
Guardianship								
Previous Pending (+)	320	316	301	274	283	305	311	336
New Filing (+)	232	219	221	245	251	253	245	263
Resolved (-)	237	232	204	235	228	228	220	258
End Pending	316	301	274	283	305	311	336	341
Resolution Rate**	1.022	1.059	0.923	0.959	0.908	0.901	0.898	0.981
Adoption								
Previous Pending (+)	158	151	149	163	154	163	147	163
New Filing (+)	103	135	112	119	114	114	130	116
Resolved (-)	110	139	97	130	106	131	116	113
End Pending	151	149	163	154	163	147	163	166
Resolution Rate**	1.068	1.030	0.866	1.092	0.930	1.149	0.892	0.974
Paternity								
Previous Pending (+)	338	295	300	282	316	293	310	278
New Filing (+)	146	180	146	191	149	163	139	133
Resolved (-)	193	171	154	161	176	153	171	140
End Pending	295	300	282	316	293	310	278	261
Resolution Rate**	1.322	0.950	1.055	0.843	1.181	0.939	1.230	1.053

* Reflecting all documents received by 07/15/2016.

** A value of "Resolution Rate" less than one indicates the resolution pace is slower than the filing pace.

Table 4 (cont.) Active Pending Caseload Statistics
King County Superior Court

Reporting Category	Q3/14	Q4/14	Q1/15	Q2/15	Q3/15	Q4/15	Q1/16	Q2/16*
Mental Illness								
Previous Pending (+)	137	120	121	143	162	122	90	95
New Filing (+)	996	965	962	1024	1085	935	1020	1056
Resolved (-)	1016	963	922	1005	1128	957	1014	1034
End Pending	120	121	143	162	122	90	95	118
Resolution Rate**	1.020	0.998	0.958	0.981	1.040	1.024	0.994	0.979
Juvenile Dependency (DEP)								
Previous Pending (+)	528	398	414	325	333	394	474	506
New Filing (+)	181	213	171	222	205	259	210	188
Resolved (-)	310	202	196	208	153	159	172	187
End Pending	398	414	325	333	394	474	506	504
Resolution Rate**	1.713	0.948	1.146	0.937	0.746	0.614	0.819	0.995
Juvenile Termination (TER)								
Previous Pending (+)	132	161	225	175	169	194	164	148
New Filing (+)	86	121	43	47	73	51	44	82
Resolved (-)	59	53	74	50	49	61	62	48
End Pending	161	225	175	169	194	164	148	181
Resolution Rate**	0.686	0.438	1.721	1.064	0.671	1.196	1.409	0.585
Juv ARY/CHINS/OTHERS								
Previous Pending (+)	111	114	119	91	89	87	111	118
New Filing (+)	67	69	48	61	41	56	63	64
Resolved (-)	66	66	56	66	61	36	63	45
End Pending	114	119	91	89	87	111	118	136
Resolution Rate**	0.985	0.957	1.167	1.082	1.488	0.642	1.000	0.703
Juvenile Truancy								
Previous Pending (+)	508	477	821	1153	1271	1202	1329	1397
New Filing (+)	27	468	573	388	14	391	532	347
Resolved (-)	298	203	270	288	124	264	524	324
End Pending	477	821	1153	1271	1202	1329	1397	1430
Resolution Rate**	11.037	0.434	1.471	0.742	8.857	0.675	0.985	0.934
Juvenile Offender								
Previous Pending (+)	668	716	677	646	651	614	581	571
New Filing (+)	500	441	473	443	384	337	307	337
Resolved (-)	429	480	456	418	451	363	364	413
End Pending	716	677	646	651	614	581	571	538
Resolution Rate**	0.858	1.088	0.964	0.944	1.174	1.077	1.186	1.226
Criminal RALJ								
Previous Pending (+)	133	138	155	140	138	154	156	146
New Filing (+)	46	48	34	51	55	40	40	24
Resolved (-)	41	32	45	55	39	35	48	39
End Pending	138	155	140	138	154	156	146	131
Resolution Rate**	0.891	0.667	1.324	1.078	0.709	0.875	1.200	1.625
Civil RALJ								
Previous Pending (+)	34	30	28	27	26	24	33	32
New Filing (+)	9	14	14	16	10	15	14	16
Resolved (-)	14	17	14	18	12	8	15	12
End Pending	30	28	27	26	24	33	32	36
Resolution Rate**	1.556	1.214	1.000	1.125	1.200	0.533	1.071	0.750

* Reflecting all documents received by 07/15/2016.

** A value of "Resolution Rate" less than one indicates the resolution pace is slower than the filing pace.

Chart 4-A. Active Pending Caseload at Quarter End
Total Judicial Cases Only ("Matters Filed with Clerk" excluded)

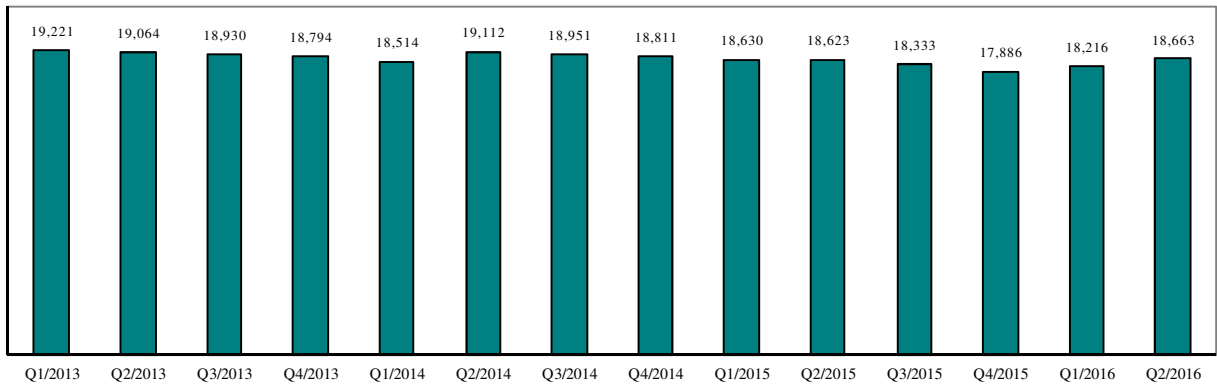


Chart 4-B. Active Pending Caseload at Quarter End: Domestic and General Civil Cases Only

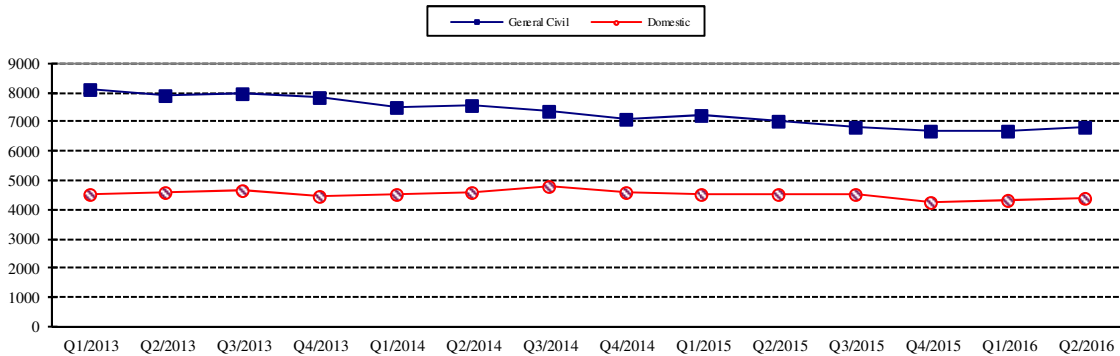
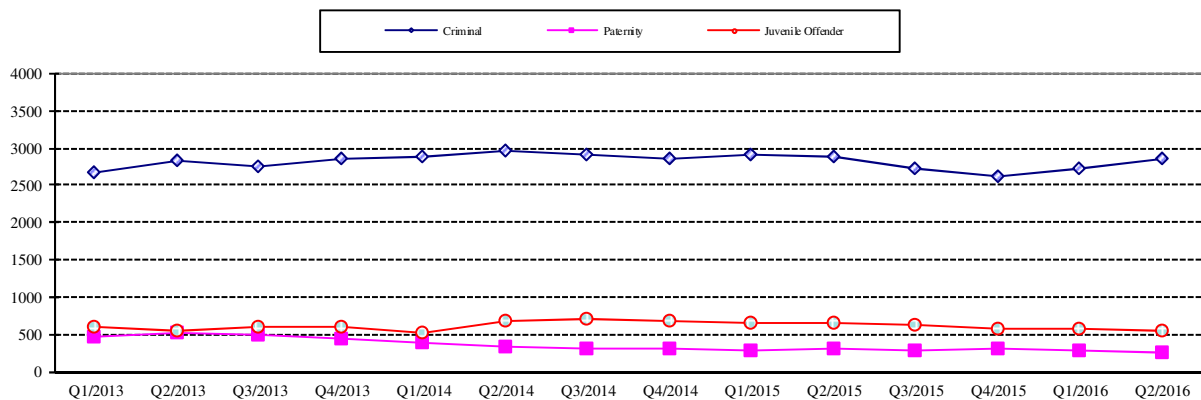


Chart 4-C. Active Pending Caseload at Quarter End:
Criminal, Juvenile Offender, Paternity and Dependency Cases Only



* Note: "General Civil" is specifically defined in this report. The category of "General Civil" does **not** include the following case types: domestic, probate, guardianship, adoption, paternity, mental illness, juvenile cases (dependency, at-risk youth, child-in-need of service), civil RALJ, and tax filings that don't require judicial resources ("matters filed with clerk"). Please check the Appendix for the cause codes in the "General Civil" category.

Table 5. Age of Pending Cases

King County Superior Court

Reporting Category	Age of Pending Cases and # of Cases in Each Age Interval							
	Q3/14	Q4/14	Q1/15	Q2/15	Q3/15	Q4/15	Q1/16	Q2/16*
Criminal (excl. RALJ): # of Cases	2923	2866	2908	2882	2727	2619	2825	2849
Age (days)								
Median (50 percentile)	120	119	96	97	106	110	95	99
95 percentile	785	794	525	549	572	610	395	541
# of Cases in Age Interval								
0 - 60 days (0 - 2 months)	854	835	1072	993	929	808	1020	997
61 - 120 days (3 - 4 months)	616	612	627	689	572	586	547	671
121 - 180 days (5 - 6 months)	435	383	362	379	406	357	348	390
181 - 270 days (7 - 9 months)	377	337	308	321	331	337	306	292
> 270 days (> 9 months)	641	699	539	500	489	531	504	494
General Civil: # of Cases	7336	7079	7215	7036	6851	6691	6686	6803
Age (days)								
Median (50 percentile)	153	157	160	133	134	143	134	126
95 percentile	577	577	547	518	524	536	395	491
# of Cases in Age Interval								
0 - 120 days (0 - 4 months)	3142	2889	2959	3299	3184	2942	3127	3302
121 - 240 days (5 - 8 months)	1793	1784	1793	1534	1675	1688	1643	1704
241 - 360 days (9 - 12 months)	1035	1209	1299	1115	965	1144	1063	997
361 - 540 days (13 - 18 months)	923	760	789	775	726	590	567	556
541 - 720 days (19 - 24 months)	258	237	231	183	183	185	146	129
> 720 days (> 24 months)	185	200	144	130	118	142	140	115
Asbestos Cases (civil) ⁽¹⁾ : # of Cases	71	69	57	54	60	56	55	50
Age (days)								
Median (50 percentile)	371	374	253	329	271	332	304	353
95 percentile	897	916	1002	1093	1002	791	690	847
# of Cases in Age Interval								
0 - 120 days (0 - 4 months)	13	10	13	9	18	6	9	10
121 - 240 days (5 - 8 months)	11	14	11	9	9	17	5	5
241 - 360 days (9 - 12 months)	9	9	10	16	10	8	16	15
361 - 540 days (13 - 18 months)	14	14	10	9	16	16	11	9
541 - 720 days (19 - 24 months)	17	15	5	4	3	5	9	4
> 720 days (> 24 months)	7	7	8	7	4	4	5	7
Domestic: # of Cases	4802	4579	4520	4497	4562	4234	4336	4416
Age (days)								
Median (50 percentile)	112	129	126	117	115	128	120	114
95 percentile	548	593	538	559	563	623	359	601
# of Cases in Age Interval								
0 - 120 days (0 - 4 months)	2555	2168	2229	2322	2347	2020	2187	2307
121 - 240 days (5 - 8 months)	1221	1388	1206	1113	1228	1175	1133	1088
241 - 360 days (9 - 12 months)	533	561	661	643	529	604	589	571
361 - 540 days (13 - 18 months)	246	197	200	186	221	196	177	202
> 540 days (> 18 months)	247	265	224	233	237	239	250	248
Probate: # of Cases	905	908	511	562	581	580	624	703
Age (days)								
Median (50 percentile)	538	630	680	272	276	297	332	338
95 percentile	2241	2333	869	847	932	1084	1025	1192
# of Cases in Age Interval								
0 - 120 days (0 - 4 months)	140	116	172	165	139	149	161	181
121 - 240 days (5 - 8 months)	115	83	89	99	124	103	86	104
241 - 360 days (9 - 12 months)	66	82	72	77	59	86	81	82
361 - 540 days (13 - 18 months)	134	120	69	83	93	67	85	107
> 540 days (> 18 months)	450	497	109	138	166	175	211	229

Reflecting all documents received by 07/15/2016.

Table 5 (cont.). Age of Pending Cases

King County Superior Court

Reporting Category	Age of Pending Cases and # of Cases in Each Age Interval							
	Q3/14	Q4/14	Q1/15	Q2/15	Q3/15	Q4/15	Q1/16	Q2/16*
Guardianship: # of Cases	316	301	274	283	305	311	336	341
Age (days)								
Median (50 percentile)	100	86	64	71	65	70	67	78
95 percentile	744	798	544	520	541	409	364	456
# of Cases in Age Interval								
0 - 120 days (0 - 4 months)	172	166	175	196	198	215	222	217
121 - 240 days (5 - 8 months)	44	37	42	35	56	45	48	60
241 - 360 days (9 - 12 months)	32	28	24	17	18	31	32	27
361 - 540 days (13 - 18 months)	31	21	18	21	17	11	24	28
> 540 days (> 18 months)	37	49	15	14	16	9	10	9
Adoption: # of Cases	151	149	163	154	163	147	163	166
Age (days)								
Median (50 percentile)	127	120	110	106	133	155	101	112
95 percentile	832	924	848	939	938	1123	515	735
# of Cases in Age Interval								
0 - 120 days (0 - 4 months)	71	75	86	83	76	67	93	85
121 - 240 days (5 - 8 months)	35	25	31	27	40	24	21	37
241 - 360 days (9 - 12 months)	14	19	14	15	16	23	17	15
361 - 540 days (13 - 18 months)	14	13	16	16	12	13	17	13
> 540 days (> 18 months)	17	17	16	13	19	20	15	16
Paternity: # of Cases	295	300	282	316	293	310	278	261
Age (days)								
Median (50 percentile)	100	86	105	84	99	102	102	105
95 percentile	334	320	285	301	301	301	256	345
# of Cases in Age Interval								
0 - 120 days (0 - 4 months)	173	183	171	211	179	173	157	143
121 - 240 days (5 - 8 months)	88	77	85	76	89	95	86	77
241 - 360 days (9 - 12 months)	23	28	17	25	17	32	27	31
361 - 540 days (13 - 18 months)	5	7	7	4	8	10	7	8
> 540 days (> 18 months)	6	5	2	0	0	0	1	2
Mental Illness: # of Cases	120	121	143	162	122	90	95	118
Age (days)								
Median (50 percentile)	113	150	33	21	23	10	9	25
95 percentile	725	813	805	896	686	168	182	350
# of Cases in Age Interval								
0 - 120 days (0 - 4 months)	61	59	92	109	106	76	85	100
121 - 240 days (5 - 8 months)	11	9	9	16	4	11	3	8
> 240 days (> 8 months)	48	53	42	37	12	3	7	10
Juv Dependency (DEP): # of Cases	398	414	325	333	394	474	506	504
Age (days)								
Median (50 percentile)	117	106	99	76	106	90	137	170
95 percentile	672	762	386	432	517	562	455	690
# of Cases in Age Interval								
0 - 60 days (0 - 2 months)	112	132	119	125	122	180	131	114
61 - 120 days (3 - 4 months)	93	89	78	98	99	110	105	72
121 - 180 days (5 - 6 months)	76	37	53	32	65	49	82	78
181 - 270 days (7 - 9 months)	50	60	25	28	35	56	71	79
> 270 days (> 9 months)	66	95	50	50	73	79	117	161
Juv Termination (TER): # of Cases	161	225	175	169	194	164	148	181
Age (days)								
Median (50 percentile)	90	90	132	189	188	175	214	156
95 percentile	872	757	404	460	504	539	589	680
# of Cases in Age Interval								
0 - 60 days (0 - 2 months)	50	75	20	40	49	27	21	48
61 - 120 days (3 - 4 months)	47	64	48	11	36	27	19	33
121 - 180 days (5 - 6 months)	20	31	53	26	11	31	17	17
181 - 270 days (7 - 9 months)	16	23	31	49	24	20	35	21
> 270 days (> 9 months)	25	31	23	43	74	59	56	62

* Reflecting all documents received by 07/15/2016.

Table 5 (cont.). Age of Pending Cases

King County Superior Court

Reporting Category	Age of Pending Cases and # of Cases in Each Age Interval							
	Q3/14	Q4/14	Q1/15	Q2/15	Q3/15	Q4/15	Q1/16	Q2/16*
Juv. ARY/CHINS/OTHER: # of Cases	114	119	91	89	87	111	118	136
Age (days)								
Median (50 percentile)	238	248	170	261	353	207	218	225
95 percentile	3033	3125	3264	3355	3390	3482	2850	3630
# of Cases in Age Interval								
0 - 60 days (0 - 2 months)	35	24	28	22	20	23	26	37
61 - 120 days (3 - 4 months)	10	20	7	8	7	20	14	16
121 - 180 days (5 - 6 months)	8	9	11	4	9	11	14	10
181 - 270 days (7 - 9 months)	8	8	6	12	3	7	14	13
> 270 days (> 9 months)	53	58	39	43	48	50	50	60
Juvenile Truancy: # of Cases	477	821	1153	1271	1202	1329	1397	1430
Age (days)								
Median (50 percentile)	159	76	93	134	222	274	143	158
95 percentile	940	995	1064	1148	1245	1324	470	899
# of Cases in Age Interval								
0 - 60 days (0 - 2 months)	25	321	447	179	6	277	380	177
61 - 120 days (3 - 4 months)	83	149	255	392	33	115	216	335
121 - 180 days (5 - 6 months)	176	1	216	266	279	9	242	281
181 - 270 days (7 - 9 months)	24	168	13	256	485	253	11	261
> 270 days (> 9 months)	169	182	222	178	399	675	548	376
Juvenile Offender: # of Cases	716	677	646	651	614	581	571	538
Age (days)								
Median (50 percentile)	92	90	76	90	97	120	118	98
95 percentile	545	627	418	439	449	507	435	596
# of Cases in Age Interval								
0 - 60 days (0 - 2 months)	232	253	268	239	216	162	177	201
61 - 120 days (3 - 4 months)	201	139	169	163	145	129	113	99
121 - 180 days (5 - 6 months)	103	90	73	87	93	93	71	63
181 - 270 days (7 - 9 months)	75	85	51	75	77	87	75	44
> 270 days (> 9 months)	105	110	85	87	83	110	135	131
Criminal RALJ: # of Cases	138	155	140	138	154	156	146	131
Age (days)								
Median (50 percentile)	154	146	158	133	136	171	169	198
95 percentile	499	591	451	506	581	673	364	506
# of Cases in Age Interval								
0 - 60 days (0 - 2 months)	31	33	31	35	34	28	27	16
61 - 120 days (3 - 4 months)	24	28	20	28	32	20	23	21
121 - 180 days (5 - 6 months)	20	30	29	17	33	40	24	21
181 - 270 days (7 - 9 months)	29	28	31	30	25	42	37	27
> 270 days (> 9 months)	34	36	29	28	30	26	35	46
Civil RALJ: # of Cases	30	28	27	26	24	33	32	36
Age (days)								
Median (50 percentile)	117	103	105	101	110	93	106	108
95 percentile	427	388	279	301	248	304	339	476
# of Cases in Age Interval								
0 - 60 days (0 - 2 months)	4	7	7	8	6	13	9	9
61 - 120 days (3 - 4 months)	11	9	8	9	7	7	9	14
121 - 180 days (5 - 6 months)	8	5	8	5	7	5	7	6
181 - 270 days (7 - 9 months)	3	5	2	1	3	5	3	3
> 270 days (> 9 months)	4	2	2	3	1	3	4	4

* Reflecting all documents received by 07/15/2016.

Table 6. Seattle vs. Regional Justice Center (KNT): Filing, Resolution, Pending Caseload (%)

King County Superior Court

	Q2/15		Q3/15		Q4/15		Q1/16		Q2/16	
	SEA	KNT	SEA	KNT	SEA	KNT	SEA	KNT	SEA	KNT
Filings Total <i>(excl. filings with clerk)</i>	63%	37%	64%	36%	63%	37%	64%	36%	63%	37%
Criminal (excl. RALJ)	56%	44%	53%	47%	55%	45%	57%	43%	56%	44%
General Civil (excl. RALJ)	55%	45%	57%	43%	55%	45%	59%	41%	55%	45%
Domestic	59%	41%	61%	39%	62%	38%	61%	39%	59%	41%
Probate	75%	25%	76%	24%	77%	23%	76%	24%	78%	22%
Guardianship	58%	42%	63%	37%	56%	44%	62%	38%	61%	39%
Adoption	70%	30%	70%	30%	70%	30%	77%	23%	67%	33%
Paternity	50%	50%	45%	55%	43%	57%	42%	58%	52%	48%
Mental Illness	100%	---	100%	---	100%	---	100%	---	100%	---
Juv. Dependency (DEP)	44%	56%	37%	63%	38%	62%	39%	61%	47%	53%
Juv. Termination (TER)	64%	36%	62%	38%	39%	61%	64%	36%	60%	40%
Juvenile ARY/CHINS/Other	43%	57%	44%	56%	48%	52%	43%	57%	45%	55%
Juvenile Truancy	51%	49%	71%	29%	48%	52%	42%	58%	44%	56%
Juvenile Offender	100%	---	100%	---	100%	---	100%	---	100%	---
Criminal RALJ	86%	14%	91%	9%	93%	7%	98%	2%	96%	4%
Civil RALJ	94%	6%	80%	20%	93%	7%	71%	29%	75%	25%
Resolution Total <i>(excl. filings with clerk)</i>	62%	38%	63%	37%	62%	38%	65%	35%	63%	37%
Criminal (excl. RALJ)	46%	54%	54%	46%	52%	48%	57%	43%	53%	47%
General Civil (excl. RALJ)	56%	44%	54%	46%	55%	44%	59%	41%	54%	46%
Domestic	59%	41%	59%	41%	60%	40%	61%	49%	60%	40%
Probate	75%	25%	77%	23%	76%	24%	76%	24%	78%	22%
Guardianship	62%	38%	64%	36%	59%	41%	55%	45%	63%	37%
Adoption	73%	27%	64%	36%	75%	25%	72%	28%	70%	30%
Paternity	50%	50%	52%	48%	46%	54%	52%	48%	26%	74%
Mental Illness	100%	---	100%	---	100%	---	100%	---	100%	---
Juv. Dependency (DEP)	45%	55%	41%	59%	38%	62%	39%	61%	48%	52%
Juv. Termination (TER)	68%	32%	63%	37%	49%	51%	57%	43%	48%	52%
Juvenile ARY/CHINS/Other	38%	62%	33%	67%	42%	58%	43%	57%	38%	62%
Juvenile Truancy	47%	53%	79%	21%	44%	56%	54%	46%	48%	52%
Juvenile Offender	100%	---	100%	---	100%	---	100%	---	100%	---
Criminal RALJ	93%	7%	97%	3%	97%	3%	81%	19%	90%	10%
Civil RALJ	89%	11%	100%	---	75%	25%	100%	---	75%	25%
Pending Total <i>(excl. filings with clerk)</i>	63%	37%	64%	36%	64%	36%	63%	37%	63%	37%
Criminal (excl. RALJ)	55%	45%	54%	46%	57%	43%	57%	43%	58%	42%
General Civil (excl. RALJ)	66%	34%	68%	32%	68%	32%	68%	32%	68%	32%
Domestic	59%	41%	59%	41%	60%	40%	60%	40%	60%	40%
Probate	80%	20%	78%	22%	80%	20%	79%	21%	79%	21%
Guardianship	59%	41%	59%	41%	57%	43%	60%	40%	59%	41%
Adoption	72%	28%	76%	24%	71%	29%	76%	24%	74%	26%
Paternity	60%	40%	55%	45%	53%	47%	48%	52%	62%	38%
Mental Illness	100%	---	100%	---	100%	---	100%	---	100%	---
Juv. Dependency (DEP)	43%	57%	41%	59%	39%	61%	37%	63%	37%	63%
Juv. Termination (TER)	62%	38%	61%	39%	54%	46%	55%	45%	59%	41%
Juvenile ARY/CHINS/Other	64%	36%	64%	36%	60%	40%	60%	40%	62%	38%
Juvenile Truancy	52%	48%	51%	41%	51%	49%	48%	52%	47%	53%
Juvenile Offender	100%	---	100%	---	100%	---	100%	---	100%	---
Criminal RALJ	91%	9%	90%	10%	89%	11%	93%	7%	95%	5%
Civil RALJ	89%	11%	79%	21%	88%	12%	75%	25%	75%	25%

Reflecting all documents received by 07/15/2016.

Table 7. Quarterly Utilization of Pro Tem Judges/Commissioners ⁽¹⁾

Category	Q2/14	Q3/14	Q4/14	Q1/15	Q2/15	Q3/15	Q4/15	Q1/16	Q2/16*
Grand Total	1610	1510	1510	797	1226	1054	1733	769	1157
Judge FTE Equivalent ⁽³⁾	3.6	3.4	3.4	1.8	2.7	2.3	3.9	1.7	2.6
By Work Type									
Pro Tem Judge	412	332	459	70	97	130	236	99	191
Pro Tem Commissioner	1028	1178	1051	709	1117	925	1497	679	966
Unspecified	170	0	0	17	13	0	0	0	0
By Location									
KCCCH	532	655	916	317	454	346	882	420	394
MRJC	505	377	273	193	273	326	501	193	239
Juvenile	282	283	276	237	312	260	234	123	405
ITA	158	195	46	33	174	122	117	33	119
Other	133	0	0	17	13	0	0	0	0
By Calendar Type									
Criminal	128	75	262	13	51	112	185	70	50
Civil	74	32	22	0	0	0	0	3	0
Ex Parte	536	333	170	102	219	100	264	64	134
Family Law/Domestic	309	506	715	396	453	461	929	470	421
Dependency	217	119	133	183	225	240	172	81	251
Juvenile Offender	103	144	119	47	45	18	51	27	125
BECCA	30	20	13	7	42	3	11	16	29
ITA	158	195	46	33	174	122	117	33	119
Juvenile Drug Court	9	0	0	0	0	0	0	0	0
Family Treatment Court	6	0	0	0	0	0	0	0	0
Plea Calendar	42	71	8	0	0	0	0	0	4
Status/Non-Compliance	0	6	13	0	4	0	0	7	16
Other or Unspecified	0	10	13	17	13	0	0	0	9
By Reason									
Vacation Backfill	565	572	674	396	527	673	818	397	582
Medical Backfill	112	208	292	147	156	168	294	211	213
Duty Time	210	249	219	211	244	132	288	134	189
Conference Coverage	259	229	4	0	257	0	59	0	134
Congestion	168	80	259	8	30	69	126	23	29
Vacancy Coverage	263	109	0	0	0	0	5	4	0
Other	34	64	63	35	13	12	145	0	11

(1) This table is based on the time sheet for compensation

(2) Judge FTE Equivalent = # of hours / [7.5 hours/day * 20 days/month * 3 months] = # of hours/450.

Data for the most current quarter are incomplete at reporting time and will be updated in next quarterly report.

The statistics on Pro Tem judge/commissioner use provide information on the external help the court has obtained in order to handle the workload. The data are collected on the time sheet for compensation (therefore it does not include unpaid volunteering or visiting judges/commissioners). The database on Pro Tem judges/commissioners is managed by the Administrative Services Department (ASD) of King County Superior Court. The Pro Tem total hours presented in this section are provided quarterly by ASD.

Table 8. Family Law Activity

	4T QTR, 2014		1ST QTR, 2015		2ND QTR, 2015		3RD QTR, 2015		4TH QTR, 2015		1ST QTR, 2016		2ND QTR, 2016	
	HRGS	ORDS	HRGS	ORDS	HRGS	ORDS	HRGS	ORDS	HRGS	ORDS	HRGS	ORDS	HRGS	ORDS
SEATTLE														
FAM.LAW	490	2248	381	1881	383	1814	524	1833	510	1665	451	1673	483	1643
DAILY AVG.	8	37	6	31	6	30	9	30	8	27	7	27	8	27
PATERNITY	53	1270	47	1112	49	1035	112	964	117	923	103	909	67	752
DAILY AVG.	1	21	1	18	1	17	2	16	2	15	2	15	1	12
DOM. VIOL.	234	484	228	545	239	576	261	598	229	643	232	666	236	666
DAILY AVG.	4	8	4	9	4	9	4	10	4	11	4	11	4	11
KENT														
FAM.LAW	380	1637	285	1414	363	1433	380	1400	403	1362	372	1309	368	1304
DAILY AVG.	6	27	5	23	6	23	6	23	7	22	6	21	6	21
PATERNITY	60	960	37	730	41	757	57	764	54	734	72	763	46	697
DAILY AVG.	1	16	1	12	1	12	1	13	1	12	1	13	1	11
DOM. VIOL.	432	562	439	666	478	704	395	782	356	749	338	719	323	823
DAILY AVG.	7	9	7	11	8	12	6	13	6	12	6	12	5	13
GRAND TOTAL	1649	7161	1417	6348	1553	6319	1729	6341	1669	6076	1568	6039	1523	5885
OVERALL DAILY AVG.	27	117	23	104	25	104	28	104	27	100	26	99	25	96

The statistics on family law and Ex Parte activity are obtained directly from SCOMIS using the appropriate docket codes.

Table 9. Ex Parte Activity

SEATTLE	2ND QTR, 2015		3RD QTR, 2015		4TH QTR, 2015		1ST QTR, 2016		2ND QTR, 2016	
	HRGS	ORDS	HRGS	ORDS	HRGS	ORDS	HRGS	ORDS	HRGS	ORDS
ADOP/PAT	86	284	69	256	102	321	63	321	65	282
DOM. VIOL.	2	402	2	446	9	417	10	388	8	405
OTH. CIVIL	245	467	262	551	237	560	241	544	281	609
DOMESTIC	423	1805	547	1893	594	2176	462	1774	401	1845
PROB/GDN	1318	2233	1259	2379	1226	2306	1258	2576	1345	2781
SUBTOTAL	2074	5191	2139	5525	2168	5780	2034	5603	2100	5922
DAILY AVG.	34	85	35	91	36	95	33	92	34	97

SEATTLE VIA CLERK (starting Jan 2009)	2ND QTR, 2015		3RD QTR, 2015		4TH QTR, 2015		1ST QTR, 2016		2ND QTR, 2016	
	----	ORDS	----	ORDS	----	ORDS	----	ORDS	----	ORDS
ADOP/PAT	----	100	----	117	----	81	----	59	----	69
DOM. VIOL.	----	8	----	3	----	2	----	1	----	2
OTH. CIVIL	----	4208	----	3800	----	3718	----	2948	----	3134
DOMESTIC	----	1410	----	1243	----	1343	----	1231	----	1262
PROB/GDN	----	909	----	947	----	909	----	932	----	919
SUBTOTAL	----	6635	----	6110	----	6053	----	5171	----	5386
DAILY AVG.	----	109	----	100	----	99	----	85	----	88

SEATTLE MAIL-IN	2ND QTR, 2015		3RD QTR, 2015		4TH QTR, 2015		1ST QTR, 2016		2ND QTR, 2016	
	----	ORDS	----	ORDS	----	ORDS	----	ORDS	----	ORDS
ADOP/PAT	----	2	----	1	----	0	----	0	----	0
DOM. VIOL.	----	0	----	0	----	0	----	0	----	1
OTH. CIVIL	----	158	----	205	----	151	----	148	----	300
DOMESTIC	----	36	----	40	----	29	----	51	----	27
PROB/GDN	----	66	----	110	----	78	----	89	----	97
SUBTOTAL	----	262	----	356	----	258	----	288	----	425
DAILY AVG.	----	4	----	6	----	4	----	5	----	7

Note: Ex Parte via Clerk started in January 2009.

Table 9 (cont). Ex Parte Activity

KENT	2ND QTR, 2015		3RD QTR, 2015		4TH QTR, 2015		1ST QTR, 2016		2ND QTR, 2016	
	HRGS	ORDS	HRGS	ORDS	HRGS	ORDS	HRGS	ORDS	HRGS	ORDS
ADOP/PAT	31	104	35	119	29	93	29	99	35	108
DOM. VIOL.	7	536	5	602	1	490	1	515	2	582
OTH. CIVIL	277	444	326	539	328	493	246	416	299	550
DOMESTIC	406	1550	398	1468	373	1336	294	1179	375	1251
PROB/GDN	460	852	399	935	452	906	385	835	471	816
SUBTOTAL	1181	3486	1163	3663	1183	3318	955	3044	1182	3307
DAILY AVG.	19	57	19	60	19	54	16	50	19	54

KENT VIA CLERK (starting Jan 2009)	2ND QTR, 2015		3RD QTR, 2015		4TH QTR, 2015		1ST QTR, 2016		2ND QTR, 2016	
	----	ORDS	----	ORDS	----	ORDS	----	ORDS	----	ORDS
ADOP/PAT	----	58	----	34	----	37	----	24	----	26
DOM. VIOL.	----	4	----	3	----	3	----	5	----	6
OTH. CIVIL	----	2123	----	2430	----	2576	----	2131	----	2393
DOMESTIC	----	498	----	519	----	389	----	485	----	480
PROB/GDN	----	309	----	286	----	293	----	326	----	327
SUBTOTAL	----	2992	----	3272	----	3298	----	2971	----	3232
DAILY AVG.	----	49	----	54	----	54	----	49	----	53

KENT MAIL-IN	2ND QTR, 2015		3RD QTR, 2015		4TH QTR, 2015		1ST QTR, 2016		2ND QTR, 2016	
	----	ORDS	----	ORDS	----	ORDS	----	ORDS	----	ORDS
ADOP/PAT	----	0	----	2	----	1	----	1	----	0
DOM. VIOL.	----	0	----	0	----	0	----	0	----	0
OTH. CIVIL	----	54	----	89	----	46	----	41	----	68
DOMESTIC	----	14	----	21	----	11	----	2	----	21
PROB/GDN	----	43	----	30	----	31	----	34	----	34
SUBTOTAL	----	111	----	142	----	89	----	78	----	123
DAILY AVG.	----	2	----	2	----	1	----	1	----	2

ALL SEATTLE AND KENT	2ND QTR, 2015		3RD QTR, 2015		4TH QTR, 2015		1ST QTR, 2016		2ND QTR, 2016	
	HRGS	ORDS	HRGS	ORDS	HRGS	ORDS	HRGS	ORDS	HRGS	ORDS
GRAND TOTAL	3255	18678	3302	19069	3351	18797	2989	17156	3282	18396
DAILY AVERAGE	53.4	306.2	54.1	312.6	54.9	308.1	49.0	281.2	53.8	301.6

Note: Ex Parte via Clerk started in January 2009.

Appendix Glossary and Definition

General Definition

Active Status

A case is active if it is not on suspense status (see Suspense Status).

Case

A case is defined as a filing with an assigned case number (or a case number plus a defendant connection code in pre-1990 criminal filings).

Completion

A case is completed when dispositive document is filed with the court following resolution.

Jury Trial

A hearing is reported as a jury trial if the jury is impaneled.

New Case

A new case is an original filing with new case number assigned.

Non-Jury Trial

A hearing is reported as a non-jury trial if an opening statement is made, waived, or reserved. A juvenile fact finding hearings is reported as a non-jury trial.

Pending Case

A case is defined as pending if it is unresolved and active (not in suspense).

Reactivated Case

A case returns to active status from suspense status during the reporting period.

Re-opened Cases

A case is re-opened if it has been previously completed but returns to the court for supplement or change of the original case resolution. A re-opened case does not have a new case number. Only resolved cases can be "re-opened". (Note: measurement not available as of July 1996. SCOMIS capacity may exist after conversion to DB2 in the future).

Resolution

A case is resolved if all issues in the complaint are fully adjudicated.

Suspended Case

A case is placed in suspense status from active status during the reporting period.

Suspense Status

A case is on suspense status if it is on warrant, appeal, stay, mediation, arbitration ("Deferred Prosecution" is not a suspense status, but is treated as a resolution).

Trial

A hearing set before a judge or jury in which all the issues in the case are meant to be resolved. A trial normally includes opening statements to the court or jury stating what the evidence will show, introduction of witnesses and exhibits for direct and cross examination, final arguments to the court or jury in which counsel argue both the evidence and the law, and judgment by the court or jury stating what the facts of the case are and what law applies to the facts. In a jury case, it also includes the selection of the jury. A trial can be held

for one or more cases. A single trial may be held to adjudicate more than one case (as defined above).

Post-resolution Modifications

In this report, we also report the post-resolution modifications for case type 3 (domestic) and 5 (paternity). These numbers are based on the tracks (DMOD and DTBA) opened after the original resolution date (i.e., if the track beginning date is after the resolution date).

Section I. Filing Activity

Additional Filings with Clerk

Filings with clerk without assigning a SCOMIS case number. This reporting category consists of search warrants, wire taps, extradition, oaths and orders pertaining to Pro Tem judge/commissioners/Court

Reporters/Bailiffs, and other "non-case" filings as recorded under 12050 system.

Annual Filings

Total number of new case filings during the calendar year (January 1 to December 31).

Adoption Cases

This reporting category includes the following "cause-of-action" codes within SCOMIS case type 5:

- Relinquishment (REL)
- Termination of Parent/Child Relationship (TER)
- Adoption (ADP)
- Miscellaneous (MSC)
- Name Change - Confidential (CHN)
- Initial Pre-Placement Report Filed with Clerk (PPR)

General Civil Cases

"General Civil" cases include all civil matters other than Domestic, Probate, Guardianship, Adoption, Paternity and appeals from courts of limited jurisdiction and "Matters Filed with Clerk". "General civil" cases include small claims as identified by the "Small Claim Track". This reporting category includes the following "cause-of-action" codes within SCOMIS case type 2:

- Administrative Law Review (ALR)
- Change of Name - Non-Confidential (CHN)
- Collection (COL)
- Commercial (COM)
- Condemnation (CON)
- Domestic Violence Protection (DVP)
- Emancipation of Minor (EOM)
- Foreclosure (FOR)
- Civil Harassment (HAR)
- Injunction (INJ)
- Other Malpractice (MAL)
- Medical Malpractice (MED)
- Meretricious Relationship (MER)
- Malicious Harassment (MHA)
- Miscellaneous (MSC)
- Minor Settlement (MST) - as of 10/1/96, under Guardianship
- Petition of Civil Commitment- Sexual Predator (PCC)
- Property Fairness (PFA)

- Personal Injury (PIN)
- Property Damage (PRP)
- Quiet Title (QTI)
- Small Claims (LCA/LCI on "Small Claim Track")
- Seizure of Property from the Commission of a Crime (SPC)
- Seizure of Property Resulting from a Crime (SPR)
- Tort Motor Vehicle (TMV)
- Tort Other (TTO)
- Unlawful Detainer (UND)
- Wrongful Death (WDE)
- Writ of Habeas Corpus (WHC)
- Miscellaneous Writ (WMW)
- Writ of Mandamus (WRM)
- Writ of Restitution (WRR)
- Writ of Review (WRV)

Civil RALJ Cases

Civil appeals from courts of limited jurisdiction (excluding small claims as identified by the "Small Claim Track"). Civil RALJ includes the following "cause-of-action" reporting categories:

- Lower Court Appeal - Civil and "Not a Small Claim"
- Lower Court Appeal - Infraction and "Not a Small Claim"

Note: The Civil RALJ cases are determined based on both SCOMIS "cause-of-action" code (LCA and LCI) within SCOMIS case type 2 and the "Small Claim Track".

Criminal Cases (excl. RALJ)

Adult criminal cases, excluding appeals from courts of limited jurisdiction. This reporting category includes the following crime categories within SCOMIS case type 1:

- Homicide
- Sex Crime
- Robbery
- Assault
- Theft/Burglary
- Motor Vehicle Theft
- Controlled Substance
- Other Felony
- Others (Misdemeanor, Non-charge Case)

Criminal RALJ Cases

Criminal appeals from courts of limited jurisdiction. This reporting category includes all SCOMIS case type 1 cases that have an appeal from lower court field of "Yes".

Domestic Cases

This reporting category includes the following "cause-of-action" codes within SCOMIS case type 3:

- Annulment – Invalidity (INV)
- Child Custody (CUS)
- Dissolution With Children Of The Marriage (DIC)
- Dissolution With No Children Of The Marriage (DIN)
- Dissolution of Domestic Partnership – With Children (DPC)
- Dissolution of Domestic Partnership – With No Children (DPN)
- Foreign Judgment (FJU)
- Invalidity – Domestic Partnership (INP)
- Mandatory Wage Assignment (MWA)
- Miscellaneous (MSC)
- Modification (MOD)
- Modification – Support Only (MDS)
- Out-Of-State Child Custody (OSC)
- Parenting Plan / Child Support (PPS)
- Reciprocal, Respondent In-County (RIC)
- Reciprocal, Respondent Out-of-County (ROC)
- Legal Separation (SEP)
- Legal Separation – Domestic Partnership (SPD)

Guardianship Cases

This reporting category includes the following "cause-of-action" codes within SCOMIS case type 4:

- Guardianship/Estate (G/E)
- Guardianship (GND)
- Limited Guardianship (LGD)
- Minor Settlement (MST)

Juvenile ARY/CHINS Cases

Juvenile dependency cases, excluding truancy cases and DEP cause code. This reporting category includes following "cause-of-action" codes within SCOMIS case type 7:

- Alternative Residential Placement (ARP)
- At-Risk Youth (ARY)
- Child in Need of Service (CNS)

Juvenile Dependency Cases

This reporting category includes following "cause-of-action" codes within SCOMIS case type 7:

- Dependency (DEP)
- Termination (TER)
- Developmental Disability (DDP)
- Guardianship Foster Children (GFC)
- Reinstatement of Parental Rights (RPR)
- Extension of Foster Care (EFC)
- Relative Visitation (RVS)

Juvenile Offender Cases

This reporting category includes the following crime categories in SCOMIS case type 8:

- Homicide
- Sex Crime
- Robbery
- Assault
- Theft/Burglary
- Motor Vehicle Theft
- Controlled Substance
- Other Felony
- Others (Misdemeanor, Non-charge Case)

Juvenile Truancy Cases

Mandatory truancy filings started on 10/01/1995. This reporting category includes the following "cause-of-action" code within SCOMIS case type 7:

- Truancy (TRU)

Matters Filed with Clerk

Filings with clerk (case numbers assigned), but requiring little or no judicial action. This reporting category includes the following "cause-of-action" codes within SCOMIS case type 2:

- Abstract of Judgment (ABJ)
- Foreign Judgment (FJU)
- Tax Warrant (TAX)
- Transcripts of Judgment (TRJ)

Mental Illness Cases

This reporting category includes all "cause-of-action" codes within SCOMIS case type 6:

- Alcoholic Treatment (ALT)
- Mental Illness - Adult (MI)
- Mental Illness - Juvenile (MIJ)

Paternity Cases

This reporting category includes the following "cause-of-action" codes within SCOMIS case type 5:

- Modification (MOD)
- Paternity (PAT)
- Paternity/URES/UFSA (PUR)

Probate Cases

This reporting category includes the following "cause-of-action" codes within SCOMIS case type 4:

- Absentee (ABS)
- Disclaimer (DSC)
- Estate (EST)
- Foreign Will (FNW)
- Miscellaneous (MSC)
- Non-Probate Notice to Creditors (NNC)
- Will Only (WLL)

Total Cases

New cases with case numbers assigned, excluding “Matters Filed with Clerk” and “Additional Filings with Clerk”.

Year-to-Date Filings

Total number of new filings since the beginning of calendar year (January 1) to the end of reporting period.

Section II. Resolution Category

Adoption - Resolved by Trial

Court Decision after Non-Jury Trial (CDAT)

Adoption - Uncontested

Consolidated Case (CONS)
Uncontested Resolution (UNDS)

Adoption - Settlement/Dismissal

Closed by Court Order after a Hearing (CLCO)
Dismissal without Trial (DSM)
Dismissal after Non-Jury Trial Commencement (DAT)
Settled after Non-Jury Trial Commencement (SAT)
Settled by Parties/Agreed Judgment (STPR)

Adoption - Closure by Clerk

Dismissal/Closure by Clerk (DSCK)

Adoption - Others

Change of Venue/Jurisdiction (CHV)
Other Non-specified Resolutions

Civil - Resolved by Jury Trial

Jury Verdict after Trial (JVAT)

Civil - Resolved by Non-Jury Trial

Court Decision after Non-Jury Trial (CDAT)

Civil - Summary Judgment

Summary Judgment (SMJG)

Civil - Default/Uncontested

Consolidated Case (CONS)
Default Judgment (DFJG)
Uncontested Resolution (UNDS)

Civil - Arbitration

Settle by Arbitration (ARBA)

Civil - Settlement/Dismissal

Closed by Court Order after a Hearing (CLCO)
Dismissal after Non-Jury Trial (DAT)
Dismissal after Jury Trial (DJT)
Dismissal (DSM)
Settled after Non-Jury Trial Commencement (SAT)
Settled after Jury Trial Commencement (SJT)
Settled by Parties/Agreed Judgment (STPR)

Civil - Closure by Clerk

Dismissal/Closure by Clerk (DSCK)

Civil - Others

Transferred to Federal bankruptcy Court (BANK)
Change of Venue/Jurisdiction (CHV)
Other Non-specified Resolutions

Civil RALJ - RALJ Decision

Court Decision to Affirm Appeal/review (CDTA)
Court Decision to Modify Appeal/Review (CDTM)
Court Decision to Reverse Appeal/review (CDTR)

Civil RALJ - Dismissal

Dismissal and Remand of Appeal/Review (DSRM)

Civil RALJ - Others

Other Non-specified Resolutions

Comparison with Court Standard

Percentage of cases actually falling within the Court’s standard benchmark.

Court Standard

Benchmarks set by a state advisory committee and adopted by the court indicating percentage of cases to be resolved at certain age (in months, 1 month = 30 days as used in the Advisory Case Processing Time Standard as published in the Court Rule).

Court standard is based on timelines as suggested by State Advisory Committee. For a case type with no time standard, the standard for a similar case type is adopted if appropriate.

Criminal: 90% by 4 months, 98% by 6 months, 100% by 9 months.

Civil: 90% by 12 months, 98% by 18 months, 100% by 24 months.

Domestic: 90% by 8 months, 98% by 10 months, 100% by 14 months.

Probate/Guardianship: 90% by 8 months, 98% by 18 months, 100% by 36 months.

Adoption/Paternity: 90% by 8 months, 98% by 10 months, 100% by 14 months.

Mental Illness/Juvenile Truancy: No standard yet.

Juvenile Dependency: 90% by 8 months, 98% by 10 months, 100% by 14 months.

Juvenile Offender: 90% by 4 months, 98% by 6 months, 100% by 9 months.

Criminal RALJ/Civil RALJ: 90% by 4 months, 98% by 5 months, 100% by 6 months.

Criminal - Resolved by Jury Trial

Acquittal by Jury (AQJV)
Convicted - Jury Verdict after Trial (CVJV)

Criminal - Resolved by Non-Jury Trial

Acquittal by Court (AQCT)
Convicted - Court Decision after Non-Jury Trial (CVCT)

Criminal - Resolved by Guilty Plea

Guilty Plea (GP)
Guilty Plea after Non-Jury Trial Commencement (GPAT)
Guilty Plea after Jury Trial Commencement (GPJT)

Criminal - Dismissal

Dismissal after Non-Jury Trial Commencement (DAT)
Dismissal after Jury Trial Commencement (DJT)
Dismissal (DSM)

Criminal - Others

Change of Venue (CHV)
Consolidated Case (CONS)
Continued Order of Prosecution with Completion (CTOP)*
Deferred Prosecution (DFPD)
Dismissal/Closure by Clerk (DSCK)
Governor’s warrant (GW)
Not Guilty by Reason of Insanity (NGRI)
Uncontested Resolution (UNDS)
Waiver of Extradition (WE)
Other Non-specified Resolutions

* Note: For adult criminal cases, “CTOP” does not necessarily constitute resolution. An adult criminal case with a “CTOP” as resolution code is counted as a resolved case only if a completion code exists along with the “CTOP”. If the resolution code is CTOP and there is no completion code, then the case is treated as unresolved. The primary reason for combining “CTOP” with a completion code is to determine resolution for drug court cases (CTOP is entered in the

SCOMIS resolution field as soon as a defendant enrolls in Drug Court). This rule on "CTOP" applies to adult criminal cases only.

Criminal RALJ - RALJ Decision

Court Decision to Affirm Appeal/review (CDTA)
Court Decision to Modify Appeal/Review (CDTM)
Court Decision to Reverse Appeal/review (CDTR)

Criminal RALJ - Dismissal

Dismissal and Remand of Appeal/Review (DSRM)

Criminal RALJ - Others

Other Non-specified Resolutions

Domestic - Resolved by Trial

Court Decision after Non-Jury Trial (CDAT)

Domestic - Default/Uncontested

Consolidated Case (CONS)
Default Judgment (DFJG)
Uncontested Resolution (UNDS)

Domestic - Settlement/Dismissal

Settled by Arbitration (ARBA)
Closed by Court Order after a Hearing (CLCO)
Dismissal after Non-Jury Trial Commencement (DAT)
Dismissal (DSM)
Settled after Non-Jury Trial Commencement (SAT)
Settled by Parties/Agreed Judgment (STPR)

Domestic - Closure by Clerk

Dismissal/Closure by Clerk (DSCK)

Domestic - Others

Change of Venue/Jurisdiction (CHV)
Summary Judgment (SMJG)
Other Non-specified Resolutions

Guardianship - Guardian Appointed

Guardian Appointed (PRGA)

Guardianship - Dismissal

Closed by Court Order after a Hearing (CLCO)
Dismissal (DSM)

Guardianship - Closure by Clerk

Dismissal/Closure by Clerk (DSCK)

Guardianship - Others

Change of Venue/Jurisdiction (CHV)
Consolidated Case (CONS)
Uncontested Resolution (UNDS)
Other Non-specified Resolutions

Juvenile Dependency - Finding of Dependency

Approved Petition (APP)

Juvenile Dependency - Dismissal

Dismissal (DSM)

Juvenile Dependency - Others

Change of Venue/Jurisdiction (CHV)
Consolidated Case (CONS)
Transfer of Jurisdiction (TRJU)
Other Non-specified Resolutions

Juvenile Offender - Resolved by Trial

Acquittal by Court (AQCT)
Convicted - Court Decision after Adjudictory Hearing (CVCT)

Juvenile Offender - Resolved by Guilty Plea

Guilty Plea before Adjudictory Hearing Commencement (GP)
Guilty Plea after Adjudictory Hearing Commencement (GPAT)

Juvenile Offender - Dismissal

Dismissal after Adjudictory Hearing Commencement (DAT)
Dismissal (DSM)

Juvenile Offender - Others

Change of venue (CHV)
Dismissal/Closure by Clerk (DSCK)
Consolidated Case (CONS)

Continued Prosecution (CTOP)
Decline of Jurisdiction (DECL)
Uncontested Resolution (UNDS)
Other Non-specified Resolutions

Juvenile Truancy - Finding of Truancy

Approved Petition (APP)

Juvenile Truancy - Dismissal

Dismissal (DSM)

Juvenile Truancy - Others

Change of Venue (CHV)
Consolidated Case (CONS)
Transfer of Jurisdiction (TRJU)
Other Non-specified Resolutions

Mental Illness - Court Decision to Commit

Court Decision to Commit (CDTC)

Mental Illness - Closed by Court

Closed by Court (CLCO)

Mental Illness - Dismissal

Dismissal (DSM)

Mental Illness - Others

Change of Venue/Jurisdiction (CHV)
Uncontested Resolution (UNDS)
Other Non-specified Resolutions

Paternity - Resolved by Trial

Court Decision after Non-Jury Trial (CDAT)

Paternity - Summary Judgment

Summary Judgment (SMJG)

Paternity - Default/Uncontested

Consolidated Case (CONS)
Default Judgment (DFJG)
Uncontested Resolution (UNDS)

Paternity - Settlement/Dismissal

Settled by Arbitration (ARBA)
Closed by Court Order after a Hearing (CLCO)
Dismissal after Non-Jury Trial Commencement (DAT)
Dismissal (DSM)
Settled after Non-Jury Trial Commencement (SAT)
Settled by Partied/Agreed Judgment (STPR)

Paternity - Closure by Clerk

Dismissal/Closure by Clerk (DSCK)

Paternity - Others

Change of Venue (CHV)
Other Non-specified Resolutions

Percentile

Percent of cases resolved at a given age. For example, if resolved cases had a 98 percentile of 12 months, it means that 98% of the cases were resolved within the age of 12 months, or conversely 2% of the cases were resolved after 12 months, not counting suspense time.

Probate - Personal Representative Appointed

Non-Intervention Probate (NIP)
Personal Representative Appointed (PRGA)

Probate - Dismissal

Closed by Court Order after a Hearing (CLCO)
Dismissal (DSM)

Probate - Closure by Clerk

Dismissal/Closure by Clerk (DSCK)

Probate - Others

Change of Venue (CHV)
Consolidated Case (CONS)
Uncontested Resolution (UNDS)
Other Non-specified Resolutions

Backlogged Cases

Active pending cases with an age exceeding the court-adopted time standard for each specific case type (recommended by the State Advisory Committee, see definition for *Court Standard*).

Section III. Pending Caseload

Adjustment

Adjustment made because of vacating of resolutions, or change in suspense status between two reporting period.

End Pending

Total number of pending cases at the end of reporting period.

Previous Pending

Total number of pending cases at the beginning of reporting period.

Resolution Rate

Resolution rate is defined as the ratio of number of resolutions to number of new filings (i.e., number of resolutions divided by number of new filings) during the reporting period. The resolution rate measures the relative pace of resolution in relation to the pace of new filings. A resolution rate of greater than 1 indicates the number of resolutions exceeds the number of new filings.

On-review Status

Cases that have been resolved (post-resolution) but still need court resources for periodic review and other remaining outstanding issues.

Probate (EST), Paternity (PAT) and Dependency (DEP): Resolved and not completed (paternity or dependency established, but outstanding issues remain).

Guardianship (GDN, LGD, G/E): Resolved and on tracks of G1, G2, G3, GE or GD; Minor Settlement (MST): Resolved with a future hearing date.

Section IV. Age of Pending Cases

Case Age

The age of a case is the time (number of days) since the filing date, less any suspense time if applicable.

Median Age

The median age is the time that 50% of the cases are under and 50% are above the given age. For example, if pending cases have a median age of 12 months, it means that 50% of the pending cases are within the age of 12 months, and 50% of pending cases are over 12 months. The median age is more robust to cases with extreme age values than the average age.

Suspense Time

Time (days) that a case is on suspense status before its resolution. If a case has more than one suspense between filing and resolution, the suspense time is the total from all suspenses. Time on suspense status after resolution (e.g., appeals) is not counted.