

King County Superior Court
Quarterly Statistical Report

Third Quarter 2016

Department of Judicial Administration
Prepared by: Shiquan Liao, Ph.D., Statistician

Release Date: October 20, 2016

Report #: QTR-2016-3

Table 1. Year-to-Date Filing Activity

King County Superior Court

Reporting Category	Year-to-Date and Annual Filing Activity ⁽¹⁾					2014-2015 change (+ means "increase")		% of 2015 Total Filing ⁽²⁾
	2012	2013	2014	2015	2016	Cases	Percentage	
Total (incl. RALJ)								
Year-to-Date Filing	41739	40215	39527	39292	39337	+45	+0.1%	
Annual Filing	54834	52755	52224	51652				
Criminal (excl. RALJ)								
Year-to-Date Filing	4636	4445	4642	4839	5021	+182	+3.8%	12.8%
Annual Filing	5942	6045	6213	6237				
General Civil (excl. Asbestos)								
Year-to-Date Filing	18820	17362	16353	15969	16243	+274	+1.7%	41.3%
Annual Filing	24477	22347	21378	21181				
Asbestos Cases (civil) ⁽³⁾								
Year-to-Date Filing	24	47	30	33	35	+2	+6.1%	0.1%
Annual Filing	36	63	40	36				
Domestic								
Year-to-Date Filing	5856	6093	6137	5965	5786	-179	-3.0%	14.7%
Annual Filing	7678	7897	7921	7559				
Probate								
Year-to-Date Filing	4120	4402	4484	4601	4640	+39	+0.8%	11.8%
Annual Filing	5492	5844	5920	6002				
Guardianship								
Year-to-Date Filing	667	681	718	717	765	+48	+6.7%	1.2%
Annual Filing	879	884	928	969				
Adoption								
Year-to-Date Filing	361	349	334	345	347	+2	+0.6%	0.9%
Annual Filing	511	483	470	460				
Paternity								
Year-to-Date Filing	888	754	522	486	380	-106	-21.8%	1.0%
Annual Filing	1161	931	702	650				
Mental Illness								
Year-to-Date Filing	2697	2743	2886	3071	3124	+53	+1.7%	7.9%
Annual Filing	3591	3678	3852	4004				
Juvenile Dependency (DEP)								
Year-to-Date Filing	610	658	727	598	573	-25	-4.2%	1.5%
Annual Filing	853	893	940	848				
Juvenile Termination (TER)								
Year-to-Date Filing	151	161	202	163	173	+10	+6.1%	0.4%
Annual Filing	200	209	325	214				
Juvenile ARY/CHINS/OTHERS								
Year-to-Date Filing	190	142	211	150	178	+28	+18.7%	0.5%
Annual Filing	242	168	285	217				
Juvenile Truancy								
Year-to-Date Filing	825	904	765	975	972	-3	-0.3%	2.5%
Annual Filing	1271	1236	1233	1369				
Juvenile Offender								
Year-to-Date Filing	1709	1306	1357	1300	972	-328	-25.2%	2.5%
Annual Filing	2249	1808	1802	1649				
Criminal RALJ								
Year-to-Date Filing	137	132	122	140	78	-62	-44.3%	0.2%
Annual Filing	192	181	172	180				
Civil RALJ								
Year-to-Date Filing	48	33	33	40	50	+10	+25.0%	0.1%
Annual Filing	63	53	47	57				
Matters Filed with Clerk ⁽⁴⁾								
Year-to-Date Filing	10895	10168	9726	7280	6826	-454	-6.2%	
Annual Filing	15046	13763	12240	9581				

(1) New filings only (based on filing date), excluding re-opened cases (unable to count), and reflecting all documents received by 10/15/2016.

(2) New filings of each reporting category as percentage of "Year-to-Date Filing".

(3) "Matters Filed with Clerk" and "Additional Filings with Clerk" are not included in the "Total".

Chart 1-A. Quarterly Filing Activity
Total Judicial Cases Only ("Matters Filed with Clerk" excluded)

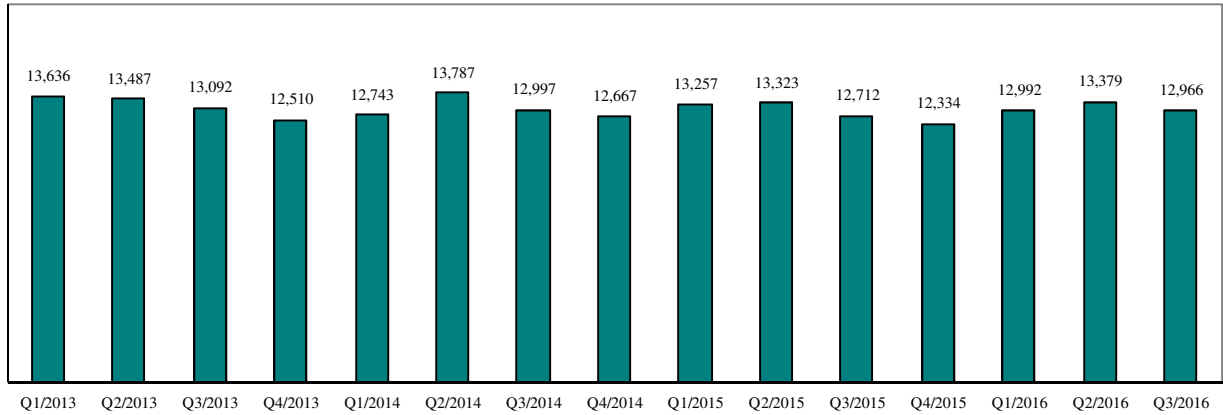
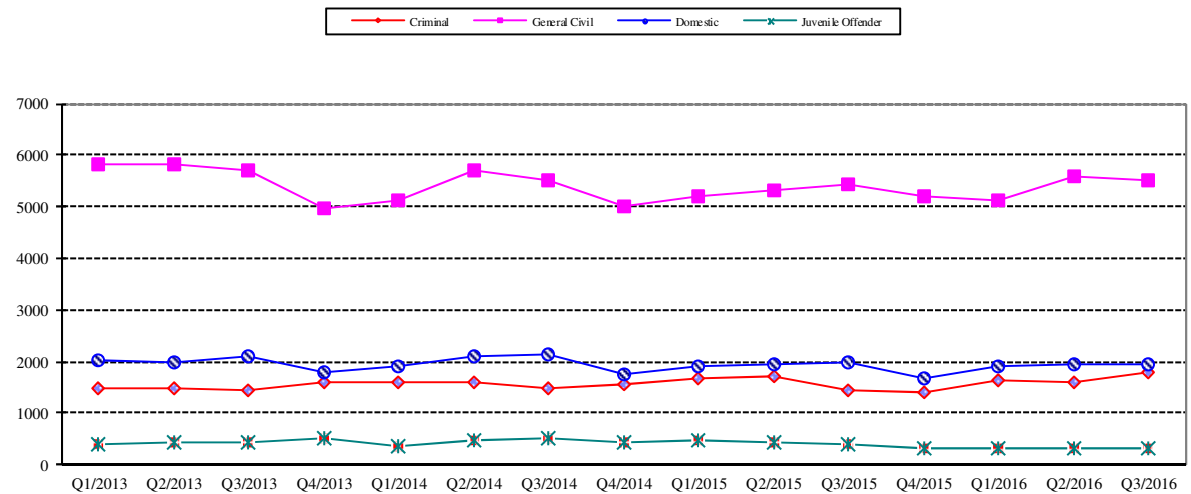


Chart 1-B. Quarterly Filings: Criminal, Domestic, General Civil and Juvenile Offender Cases Only



* Note: "General Civil" is specifically defined in this report. The category of "General Civil" does **not** include the following case types: domestic, probate, guardianship, adoption, paternity, mental illness, juvenile cases (dependency, at-risk youth, child-in-need of service, civil RALJ, and tax filings that don't require judicial resources ("matters filed with clerk")). Please check the Appendix for the cause codes in the "General Civil" category.

Table 1-A. Post-Resolution Modifications (Domestic and Paternity Cases)

Based on Tracks Opened After Original Resolution Date

		2014Q1			2014Q2			2014Q3			2014Q4			Year 2014		
Location	Case Type	DMOD	DTBA	Total	DMOD	DTBA	Total	DMOD	DTBA	Total	DMOD	DTBA	Total	DMOD	DTBA	Total
KNT	Domestic	144	43	187	172	66	238	183	46	229	164	42	206	663	197	860
	Paternity	15	4	19	11	7	18	13	4	17	16	6	22	55	21	76
KNT Total		159	47	206	183	73	256	196	50	246	180	48	228	718	218	936
SEA	Domestic	155	59	214	155	104	259	170	76	246	154	57	211	634	296	930
	Paternity	14	6	20	8	10	18	15	11	26	9	4	13	46	31	77
SEA Total		169	65	234	163	114	277	185	87	272	163	61	224	680	327	1007
KNT/SEA Total		328	112	440	346	187	533	381	137	518	343	109	452	1398	545	1943
		2015Q1			2015Q2			2015Q3			2015Q4			Year 2015		
Location	Case Type	DMOD	DTBA	Total	DMOD	DTBA	Total	DMOD	DTBA	Total	DMOD	DTBA	Total	DMOD	DTBA	Total
KNT	Domestic	166	37	203	188	49	237	168	31	199	166	32	198	688	149	837
	Paternity	14	4	18	18	8	26	15	3	18	8	6	14	55	21	76
KNT Total		180	41	221	206	57	263	183	34	217	174	38	212	743	170	913
SEA	Domestic	150	56	206	145	85	230	171	44	215	146	49	195	612	234	846
	Paternity	8	8	16	8	7	15	7	8	15	5	4	9	28	27	55
SEA Total		158	64	222	153	92	245	178	52	230	151	53	204	640	261	901
KNT/SEA Total		338	105	443	359	149	508	361	86	447	325	91	416	1383	431	1814
		2016Q1			2016Q2			2016Q3			2016Q4			Year 2016		
Location	Case Type	DMOD	DTBA	Total	DMOD	DTBA	Total	DMOD	DTBA	Total	DMOD	DTBA	Total	DMOD	DTBA	Total
KNT	Domestic	174	29	203	167	56	223	204	32	236				545	117	662
	Paternity	16	6	22	12	6	18	12	3	15				40	15	55
KNT Total		190	35	225	179	62	241	216	35	251				585	132	717
SEA	Domestic	154	71	225	154	76	230	173	51	224				481	198	679
	Paternity	6	9	15	11	8	19	14	7	21				31	24	55
SEA Total		160	80	240	165	84	249	187	58	245				512	222	734
KNT/SEA Total		350	115	465	344	146	490	403	93	496				1097	354	1451

* DMOD = parenting plan modification track; DTBA = support modification track.

Table 2. Number of Cases Resolved and Resolution Category (%)

King County Superior Court

Reporting Category	Q4/14	Q1/15	Q2/15	Q3/15	Q4/15	Q1/16	Q2/16	Q3/16*
Total Resolutions (excl. "Matters Filed with Clerk")	13195	13228	15990	13497	13206	13113	13387	13274
Criminal (excl. RALJ): # Resolved	1535	1507	1731	1635	1532	1529	1444	1483
Resolved by Jury Trial	3.4%	3.6%	2.8%	2.6%	3.3%	4.3%	2.3%	2.5%
Resolved by Non-Jury Trial	2.0%	0.7%	0.2%	0.5%	0.5%	1.1%	1.0%	0.9%
Resolved by Guilty Plea	80.4%	78.0%	80.2%	81.7%	80.6%	80.1%	81.1%	80.3%
Dismissal	13.8%	17.7%	16.7%	14.7%	15.3%	13.8%	15.0%	15.5%
Others	0.5%	0.1%	0.2%	0.4%	0.4%	0.2%	0.6%	0.7%
General Civil: # Resolved	5650	5718	5639	5933	5853	5435	5872	5628
Resolved by Jury Trial	0.6%	0.7%	0.5%	0.5%	0.5%	0.6%	0.4%	0.5%
Resolved by Non-Jury Trial	0.4%	0.2%	0.6%	0.5%	0.3%	0.3%	0.4%	0.5%
Summary Judgment	2.2%	1.5%	2.1%	1.6%	1.8%	2.0%	2.0%	1.6%
Default/ Uncontested	37.4%	40.1%	39.1%	41.0%	42.1%	38.1%	40.2%	40.4%
Arbitration	2.7%	3.0%	3.0%	2.9%	2.7%	3.1%	3.3%	2.7%
Settlement/Dismissal	53.0%	51.1%	51.8%	50.4%	48.3%	52.6%	50.6%	49.4%
Closure by Clerk	2.3%	2.4%	2.1%	2.2%	3.6%	2.6%	2.5%	4.3%
Others	1.4%	0.9%	0.9%	0.8%	0.7%	0.8%	0.7%	0.8%
Asbestos Cases (civil): # Resolved	14	25	9	12	10	9	14	8
Resolved by Jury Trial	0.0%	0.0%	0.0%	0.0%	0.0%	11.1%	0.0%	12.5%
Resolved by Non-Jury Trial	0.0%	0.0%	0.0%	0.0%	0.0%	0.0%	0.0%	0.0%
Summary Judgment	14.3%	4.0%	0.0%	0.0%	50.0%	22.2%	0.0%	0.0%
Default/ Uncontested	14.3%	0.0%	11.1%	8.3%	0.0%	0.0%	7.1%	12.5%
Arbitration	0.0%	0.0%	0.0%	0.0%	0.0%	0.0%	0.0%	0.0%
Settlement/Dismissal	57.1%	64.0%	55.6%	66.7%	20.0%	55.6%	85.7%	62.5%
Closure by Clerk	14.3%	28.0%	33.3%	25.0%	30.0%	11.1%	7.1%	12.5%
Others	0.0%	4.0%	0.0%	0.0%	0.0%	0.0%	0.0%	0.0%
Domestic: # Resolved	1994	1915	2031	1959	2019	1810	1895	1881
Resolved by Trial	3.7%	3.9%	5.4%	5.2%	4.4%	4.0%	4.6%	4.8%
Default/ Uncontested	8.7%	11.3%	10.5%	10.0%	10.3%	10.1%	9.8%	10.2%
Settlement /Dismissal	87.2%	84.2%	83.4%	83.6%	84.5%	84.5%	84.3%	84.2%
Closure by Clerk	0.4%	0.3%	0.5%	0.5%	0.6%	0.8%	0.6%	0.4%
Others	0.1%	0.4%	0.2%	0.8%	0.3%	0.6%	0.6%	0.5%
Probate: # Resolved	1448	1575	1507	1431	1397	1561	1549	1473
Personal Rep. Appointed	71.7%	72.1%	72.3%	72.6%	72.8%	72.7%	72.3%	71.6%
Dismissal	3.3%	1.9%	2.7%	3.6%	4.3%	2.6%	2.8%	3.7%
Closure by Clerk	0.2%	0.0%	0.0%	0.0%	0.6%	0.1%	0.0%	0.0%
Others	24.9%	26.0%	25.0%	23.8%	22.3%	24.6%	24.9%	24.7%
Guardianship: # Resolved	232	204	235	228	228	220	258	265
Guardian Appointed	48.7%	56.4%	51.1%	54.4%	54.8%	55.5%	55.8%	47.6%
Dismissal	51.3%	43.6%	46.8%	43.9%	44.7%	43.2%	43.0%	51.7%
Closure by Clerk	0.0%	0.0%	0.0%	0.0%	0.0%	0.0%	0.0%	0.0%
Others	0.0%	0.0%	2.1%	1.8%	0.4%	1.4%	1.2%	0.8%
Adoption: # Resolved	139	97	130	106	131	116	113	104
Resolved by Trial	0.7%	0.0%	0.0%	0.0%	0.8%	0.0%	0.9%	0.0%
Uncontested	3.6%	11.3%	2.3%	7.6%	3.1%	9.5%	6.2%	3.9%
Settlement /Dismissal	95.0%	87.6%	97.7%	91.5%	93.9%	90.5%	92.9%	96.2%
Closure by Clerk	0.0%	0.0%	0.0%	0.0%	0.8%	0.0%	0.0%	0.0%
Others	0.7%	1.0%	0.0%	0.9%	1.5%	0.0%	0.0%	0.0%
Paternity: # Resolved	171	154	161	176	153	171	140	141
Resolved by Trial	1.2%	2.6%	3.1%	4.6%	0.0%	1.2%	2.1%	1.4%
Summary Judgment	53.8%	39.6%	41.0%	48.9%	45.8%	52.1%	39.3%	52.5%
Default/ Uncontested	18.1%	22.7%	25.5%	19.3%	24.2%	17.0%	25.7%	17.7%
Settlement/Dismissal	26.9%	35.1%	29.8%	27.3%	29.4%	29.8%	32.9%	27.7%
Closure by Clerk	0.0%	0.0%	0.0%	0.0%	0.0%	0.0%	0.0%	0.0%
Others	0.0%	0.0%	0.6%	0.0%	0.7%	0.0%	0.0%	0.7%

Reflecting all documents received by 10/15/2016.

Table 2 (cont.). Number of Cases Resolved and Resolution Category (%)

King County Superior Court

Reporting Category	Q4/14	Q1/15	Q2/15	Q3/15	Q4/15	Q1/16	Q2/16	Q3/16*
Mental Illness: # Resolved	963	922	1005	1128	957	1014	1034	1085
Court Decision to Commit	63.9%	67.7%	62.9%	63.4%	60.4%	64.2%	65.3%	63.0%
Closed by Court	0.0%	0.0%	0.0%	0.0%	0.0%	0.0%	0.0%	0.0%
Dismissal	22.5%	19.6%	19.7%	18.2%	19.8%	20.6%	21.3%	16.7%
Others	13.6%	12.7%	17.4%	18.4%	19.9%	15.2%	13.4%	20.3%
Juv. Dependency: # Resolved	202	196	208	153	159	172	187	397
Finding of Dependency	133	70.9%	76.0%	67.3%	80.5%	72.9%	81.8%	87.4%
Dismissal	69	27.6%	23.6%	32.0%	19.5%	26.7%	18.2%	12.3%
Others	0	1.5%	0.5%	0.7%	0.0%	1.2%	0.0%	0.3%
Juv. Terminations: # Resolved	51	74	50	49	61	62	48	103
Finding of Dependency	43	94.6%	88.0%	77.6%	77.0%	74.2%	79.2%	95.2%
Dismissal	10	5.4%	12.0%	22.4%	23.0%	25.8%	20.8%	4.8%
Others	0	0.0%	0.0%	0.0%	0.0%	0.0%	0.0%	0.0%
Juv. ARY/CHINS/OTHER:# Resolved	66	56	66	61	36	63	45	93
Approve of Petition	63.6%	51.8%	53.0%	39.3%	52.8%	38.1%	28.9%	55.9%
Dismissal	36.4%	46.4%	47.0%	60.7%	47.2%	61.9%	71.1%	44.1%
Others	0.0%	1.8%	0.0%	0.0%	0.0%	0.0%	0.0%	0.0%
Juvenile Truancy: # Resolved	203	270	288	124	264	524	324	151
Approve of Petition	9.9%	45.6%	37.2%	0.8%	1.9%	5.0%	0.6%	7.3%
Dismissal	90.2%	54.4%	62.9%	99.2%	98.1%	95.0%	99.4%	92.7%
Others	0.0%	0.0%	0.0%	0.0%	0.0%	0.0%	0.0%	0.0%
Juvenile Offender: # Resolved	480	456	418	451	363	364	413	398
Resolved by Trial (Fact Finding)	5.4%	6.6%	4.1%	3.8%	1.1%	1.4%	4.6%	1.0%
Resolved by Guilty Plea	33.3%	32.5%	35.4%	28.4%	34.7%	37.4%	36.3%	34.4%
Dismissal	46.5%	44.5%	41.6%	43.7%	46.3%	40.9%	43.1%	43.2%
Deferred Disposition (DDSP)	11.7%	12.9%	15.3%	17.3%	13.2%	15.1%	12.6%	15.8%
Others (including Deferred Prosecution)	3.1%	3.5%	3.6%	6.9%	4.7%	5.2%	3.4%	5.5%
Criminal RALJ: # Resolved	32	45	55	39	35	48	39	40
RALJ Decision	78.1%	71.1%	69.1%	56.4%	54.3%	58.3%	79.5%	82.5%
Dismissal	21.9%	26.7%	29.1%	35.9%	45.7%	35.4%	10.3%	10.0%
Others	0.0%	2.2%	1.8%	7.7%	0.0%	6.3%	10.3%	7.5%
Civil RALJ: # Resolved	17	14	18	12	8	15	12	24
RALJ Decision	41.2%	35.7%	27.8%	16.7%	12.5%	46.7%	50.0%	37.5%
Dismissal	58.8%	50.0%	55.6%	83.3%	62.5%	46.7%	41.7%	25.0%
Others	0.0%	14.3%	16.7%	0.0%	25.0%	6.7%	8.3%	37.5%

* Reflecting all documents received by 10/15/2016.

Chart 2-A. Quarterly Resolutions
Total Judicial Cases Only ("Matters Filed with Clerk" excluded)

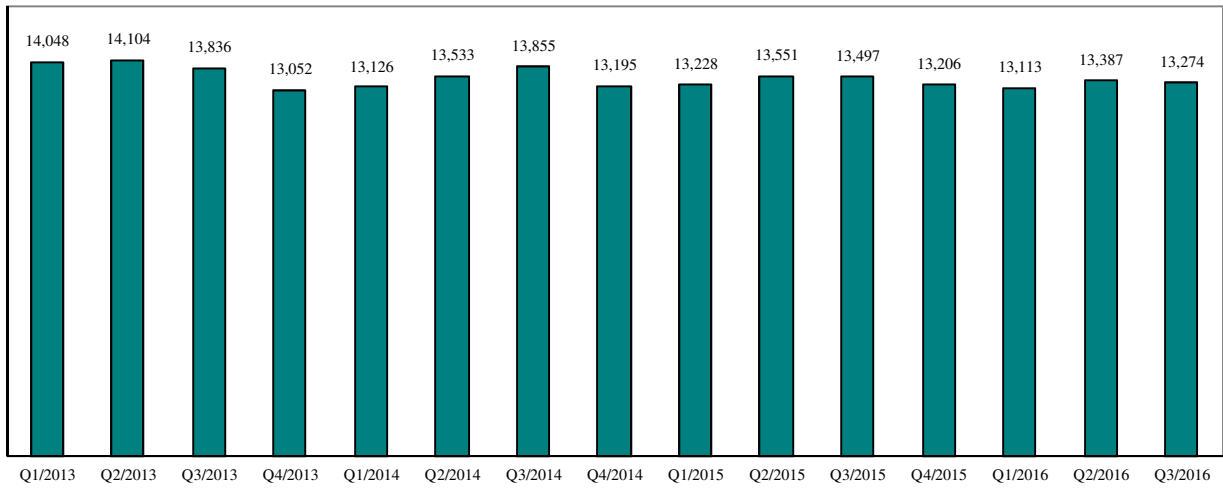
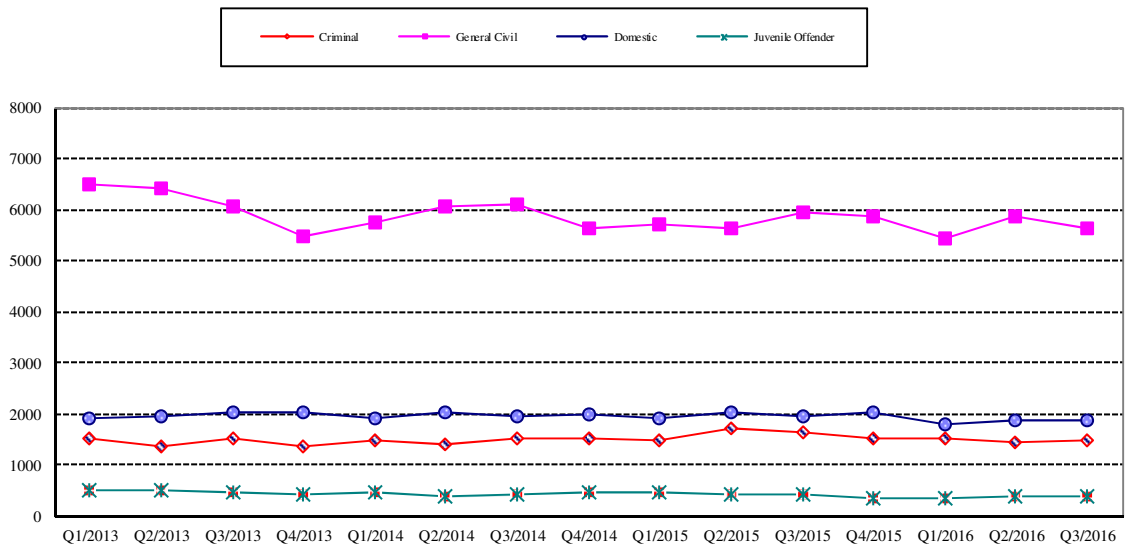


Chart 2-B. Quarterly Resolutions: Criminal, Dmestic, General Civil and Juvenile Offender Cases Only



* Note: "General Civil" is specifically defined in this report. The category of "General Civil" does **not** include the following case types: domestic, probate, guardianship, adoption, paternity, mental illness, juvenile cases (dependency, at-risk youth, child-in-need of service), civil RALJ, and tax filings that don't require judicial resources ("matters filed with clerk"). Please check the Appendix for the cause codes in the "General Civil" category.

Table 3. Age of Resolved Cases
King County Superior Court

Reporting Category	Age of Cases at Resolution							
	Q4/14	Q1/15	Q2/15	Q3/15	Q4/15	Q1/16	Q2/16	Q3/16*
Criminal (excl. RALJ)								
Age (days)								
50% Cases Resolved by Day	118	124	105	112	113	120	111	108
90% Cases Resolved by Day	342	366	343	326	306	364	346	328
Comparison with Court Standard of								
90% in 4 months	51%	49%	56%	53%	53%	50%	54%	56%
98% in 6 months	70%	67%	72%	72%	73%	69%	71%	74%
100% in 9 months	86%	82%	86%	85%	88%	84%	86%	86%
General Civil ⁽¹⁾								
Age (days)								
50% Cases Resolved by Day	35	30	36	31	35	38	33	28
90% Cases Resolved by Day	437	425	413	407	398	388	368	357
Comparison with Court Standard of								
90% in 12 months	84%	84%	85%	85%	88%	86%	89%	92%
98% in 18 months	94%	96%	94%	95%	97%	96%	97%	98%
100% in 24 months	99%	99%	99%	98%	99%	99%	99%	99%
Domestic								
Age (days)								
50% Cases Resolved by Day	164	171	175	161	149	176	172	147
90% Cases Resolved by Day	364	357	365	368	372	378	372	371
Comparison with Court Standard of								
90% in 8 months	67%	66%	60%	64%	66%	61%	61%	66%
98% in 10 months	78%	76%	72%	75%	76%	73%	75%	78%
100% in 14 months	94%	95%	95%	94%	93%	92%	94%	94%
Probate								
Age (days)								
50% Cases Resolved by Day	0	0	0	0	0	0	0	0
90% Cases Resolved by Day	17	7	13	19	19	12	13	24
Comparison with Court Standard of								
90% in 8 months	99%	99%	98%	97%	97%	97%	97%	98%
98% in 18 months	100%	100%	100%	99%	99%	100%	99%	99%
100% in 36 months	100%	100%	100%	100%	100%	100%	100%	100%
Guardianship								
Age (days)								
50% Cases Resolved by Day	68	65	65	71	62	70	68	71
90% Cases Resolved by Day	274	237	242	211	193	162	240	273
Comparison with Court Standard of								
90% in 8 months	88%	89%	89%	91%	92%	96%	91%	85%
98% in 18 months	98%	97%	99%	98%	99%	100%	99%	98%
100% in 36 months	99%	99%	100%	100%	100%	100%	100%	100%
Adoption								
Age (days)								
50% Cases Resolved by Day	56	79	70	42	55	62	66	99
90% Cases Resolved by Day	230	504	414	298	211	499	444	714
Comparison with Court Standard of								
90% in 8 months	90%	81%	84%	90%	89%	80%	86%	68%
98% in 10 months	90%	84%	87%	93%	91%	84%	86%	79%
100% in 14 months	96%	88%	91%	95%	94%	89%	85%	81%
Paternity								
Age (days)								
50% Cases Resolved by Day	145	141	139	135	139	164	142	172
90% Cases Resolved by Day	286	309	303	307	272	306	307	296
Comparison with Court Standard of								
90% in 8 months	82%	78%	76%	76%	84%	73%	79%	71%
98% in 10 months	93%	87%	89%	90%	94%	88%	89%	92%
100% in 14 months	98%	96%	96%	98%	98%	97%	98%	97%

Table 3 (cont.) Age of Resolved Cases

King County Superior Court

Reporting Category	Age of Cases at Resolution							
	Q4/14	Q1/15	Q2/15	Q3/15	Q4/15	Q1/16	Q2/16	Q3/16*
Mental Illness**								
Age (days)								
50% Cases Resolved by Day	3	3	4	4	4	3	4	4
90% Cases Resolved by Day	10	12	14	18	21	15	12	15
Juvenile Dependency (DEP)								
Age (days)								
50% Cases Resolved by Day	121	111	121	89	125	85	104	278
90% Cases Resolved by Day	253	312	250	217	221	218	230	570
Comparison with Court Standard of								
90% in 8 months	89%	85%	90%	90%	94%	92%	93%	46%
98% in 10 months	92%	91%	95%	92%	95%	97%	96%	60%
100% in 14 months	97%	98%	99%	94%	98%	99%	96%	77%
Juvenile Termination (TER)								
Age (days)								
50% Cases Resolved by Day	131	138	182	154	106	163	259	272
90% Cases Resolved by Day	321	263	282	382	350	406	665	680
Comparison with Court Standard of								
90% in 8 months	81%	83%	80%	73%	81%	68%	45%	45%
98% in 10 months	89%	94%	94%	89%	84%	81%	61%	61%
100% in 14 months	100%	99%	96%	94%	97%	92%	69%	73%
Juv ARY/CHINS/OTHER								
Age (days)								
50% Cases Resolved by Day	34	80	37	103	35	55	53	208
90% Cases Resolved by Day	184	622	139	304	288	294	230	730
Comparison with Court Standard of								
90% in 8 months	95%	87%	94%	73%	90%	86%	96%	58%
98% in 10 months	99%	89%	96%	88%	93%	91%	98%	62%
100% in 14 months	100%	89%	98%	97%	97%	94%	100%	74%
Juvenile Truancy**								
Age (days)								
50% Cases Resolved by Day	108	128	133	182	269	341	371	483
90% Cases Resolved by Day	214	750	357	646	394	493	514	591
Juvenile Offender								
Age (days)								
50% Cases Resolved by Day	84	98	89	92	88	99	112	90
90% Cases Resolved by Day	241	267	257	273	257	235	340	309
Comparison with Court Standard of								
90% in 4 months	63%	61%	66%	63%	66%	60%	53%	60%
98% in 6 months	80%	78%	83%	79%	79%	79%	73%	79%
100% in 9 months	93%	91%	91%	90%	91%	95%	87%	87%
Criminal RALJ								
Age (days)								
50% Cases Resolved by Day	258	296	251	258	260	247	269	292
90% Cases Resolved by Day	407	725	456	438	421	636	510	449
Civil RALJ								
Age (days)								
50% Cases Resolved by Day	164	180	167	165	170	165	172	165
90% Cases Resolved by Day	352	272	216	336	249	280	225	227

* Reflecting all documents received by 10/15/2016.

** No standard yet.

Table 4. Active Pending Caseload Statistics
King County Superior Court

Reporting Category	Q4/14	Q1/15	Q2/15	Q3/15	Q4/15	Q1/16	Q2/16	Q3/16*
Total (incl. RALJ)								
Previous Pending (+)	18951	18811	18603	18623	18333	17886	18216	18216
New Filing (+)	12667	13257	13323	12712	12334	12992	13373	12966
Resolved (-)	13195	13228	13551	13497	13206	13113	13387	13274
End Pending	18811	18630	18623	18333	17886	18216	18663	18678
Resolution Rate**	1.042	0.998	1.017	1.062	1.071	1.009	1.001	1.020
Criminal (excl. RALJ)								
Previous Pending (+)	2923	2866	2908	2882	2727	2619	2725	2849
New Filing (+)	1567	1682	1711	1446	1395	1647	1594	1780
Resolved (-)	1535	1507	1731	1635	1532	1529	1444	1483
End Pending	2866	2908	2882	2727	2619	2725	2849	3050
Resolution Rate**	0.980	0.896	1.012	1.131	1.098	0.928	0.906	0.833
General Civil								
Previous Pending (+)	7336	7079	7215	7036	6851	6691	6686	6803
New Filing (+)	5020	5213	5308	5448	5210	5110	5602	5531
Resolved (-)	5650	5718	5639	5933	5853	5435	5872	5628
End Pending	7079	7215	7036	6851	6691	6686	6803	7044
Resolution Rate**	1.125	1.097	1.062	1.089	1.123	1.064	1.048	1.018
Asbestos Cases (civil) ⁽¹⁾								
Previous Pending (+)	71	69	57	54	60	56	55	50
New Filing (+)	9	9	6	18	2	8	9	18
Resolved (-)	14	25	8	12	10	9	14	8
End Pending	69	57	54	60	56	55	50	58
Resolution Rate**	1.556	2.778	1.333	0.667	5.000	1.125	1.556	0.444
Domestic								
Previous Pending (+)	4802	4579	4520	4497	4562	4234	4336	4416
New Filing (+)	1773	1904	1964	1997	1694	1897	1942	1947
Resolved (-)	1994	1203	2031	1959	2019	1810	1895	1881
End Pending	4579	4520	4497	4562	4234	4336	4416	4465
Resolution Rate**	1.125	1.006	1.034	0.981	1.192	0.954	0.976	0.966
Probate								
Previous Pending (+)	902	908	511	562	581	580	624	703
New Filing (+)	1426	1652	1527	1422	1419	1586	1600	1454
Resolved (-)	1448	1575	1507	1431	1397	1561	1549	1473
End Pending	908	511	562	581	580	624	703	715
Resolution Rate**	1.015	0.953	0.987	1.006	0.984	0.984	0.968	1.013
Guardianship								
Previous Pending (+)	316	301	274	283	305	311	336	341
New Filing (+)	219	221	245	251	253	245	263	257
Resolved (-)	232	204	235	228	228	220	258	265
End Pending	301	274	283	305	311	336	341	337
Resolution Rate**	1.059	0.923	0.959	0.908	0.901	0.898	0.981	1.031
Adoption								
Previous Pending (+)	151	149	163	154	163	147	163	166
New Filing (+)	135	112	119	114	114	130	116	101
Resolved (-)	139	97	130	106	131	116	113	104
End Pending	149	163	154	163	147	163	166	163
Resolution Rate**	1.030	0.866	1.092	0.930	1.149	0.892	0.974	1.030
Paternity								
Previous Pending (+)	295	300	282	316	293	310	278	261
New Filing (+)	180	146	191	149	163	139	133	108
Resolved (-)	171	154	161	176	153	171	140	141
End Pending	300	282	316	293	310	278	261	232
Resolution Rate**	0.950	1.055	0.843	1.181	0.939	1.230	1.053	1.306

* Reflecting all documents received by 10/15/2016.

** A value of "Resolution Rate" less than one indicates the resolution pace is slower than the filing pace.

Table 4 (cont.) Active Pending Caseload Statistics
King County Superior Court

Reporting Category	Q4/14	Q1/15	Q2/15	Q3/15	Q4/15	Q1/16	Q2/16	Q3/16*
Mental Illness								
Previous Pending (+)	120	121	143	162	122	90	95	118
New Filing (+)	965	962	1024	1085	935	1020	1056	1048
Resolved (-)	963	922	1005	1128	957	1014	1034	1085
End Pending	121	143	162	122	90	95	118	82
Resolution Rate**	0.998	0.958	0.981	1.040	1.024	0.994	0.979	1.035
Juvenile Dependency (DEP)								
Previous Pending (+)	398	414	325	333	394	474	506	504
New Filing (+)	213	171	222	205	259	210	188	175
Resolved (-)	202	196	208	153	159	172	187	397
End Pending	414	325	333	394	474	506	504	289
Resolution Rate**	0.948	1.146	0.937	0.746	0.614	0.819	0.995	2.269
Juvenile Termination (TER)								
Previous Pending (+)	161	225	175	169	194	164	148	181
New Filing (+)	121	43	47	73	51	44	82	41
Resolved (-)	53	74	50	49	61	62	48	103
End Pending	225	175	169	194	164	148	181	128
Resolution Rate**	0.438	1.721	1.064	0.671	1.196	1.409	0.585	2.512
Juv ARY/CHINS/OTHERS								
Previous Pending (+)	114	119	91	89	87	111	118	136
New Filing (+)	69	48	61	41	56	63	64	51
Resolved (-)	66	56	66	61	36	63	45	93
End Pending	119	91	89	87	111	118	136	98
Resolution Rate**	0.957	1.167	1.082	1.488	0.642	1.000	0.703	1.824
Juvenile Truancy								
Previous Pending (+)	477	821	1153	1271	1202	1329	1397	1430
New Filing (+)	468	573	388	14	391	532	347	93
Resolved (-)	203	270	288	124	264	524	324	151
End Pending	821	1153	1271	1202	1329	1397	1430	1374
Resolution Rate**	0.434	1.471	0.742	8.857	0.675	0.985	0.934	1.624
Juvenile Offender								
Previous Pending (+)	716	677	646	651	614	581	571	538
New Filing (+)	441	473	443	384	337	307	337	328
Resolved (-)	480	456	418	451	363	364	413	398
End Pending	677	646	651	614	581	571	538	504
Resolution Rate**	1.088	0.964	0.944	1.174	1.077	1.186	1.226	1.213
Criminal RALJ								
Previous Pending (+)	138	155	140	138	154	156	146	131
New Filing (+)	48	34	51	55	40	40	24	14
Resolved (-)	32	45	55	39	35	48	39	40
End Pending	155	140	138	154	156	146	131	107
Resolution Rate**	0.667	1.324	1.078	0.709	0.875	1.200	1.625	2.857
Civil RALJ								
Previous Pending (+)	30	28	27	26	24	33	32	36
New Filing (+)	14	14	16	10	15	14	16	20
Resolved (-)	17	14	18	12	8	15	12	24
End Pending	28	27	26	24	33	32	36	32
Resolution Rate**	1.214	1.000	1.125	1.200	0.533	1.071	0.750	1.200

* Reflecting all documents received by 10/15/2016.

** A value of "Resolution Rate" less than one indicates the resolution pace is slower than the filing pace.

Chart 4-A. Active Pending Caseload at Quarter End
Total Judicial Cases Only ("Matters Filed with Clerk" excluded)

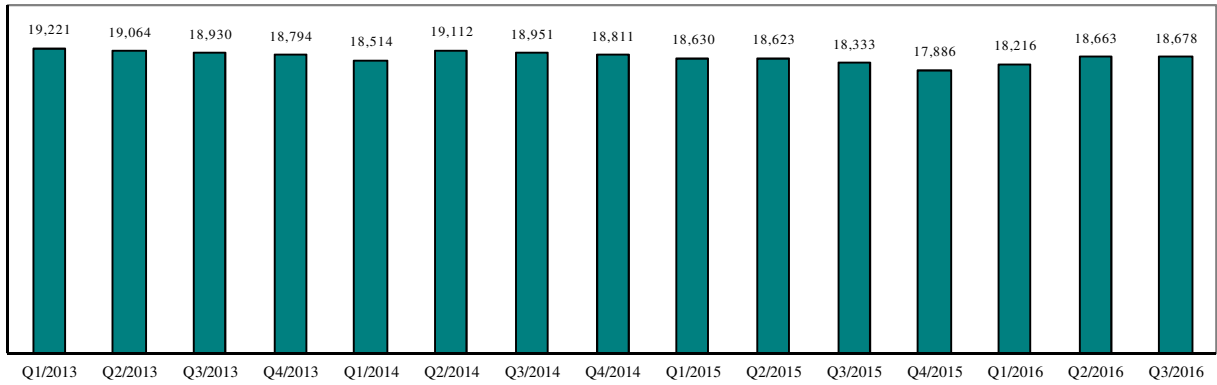


Chart 4-B. Active Pending Caseload at Quarter End: Domestic and General Civil Cases Only

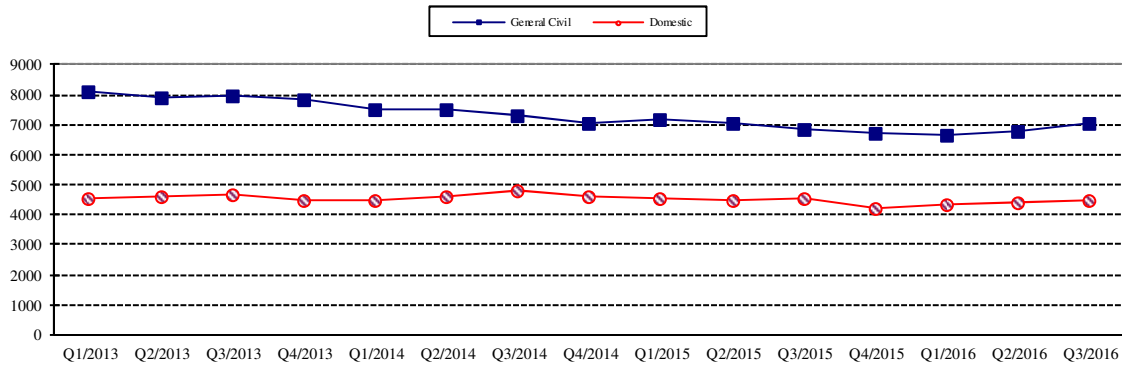
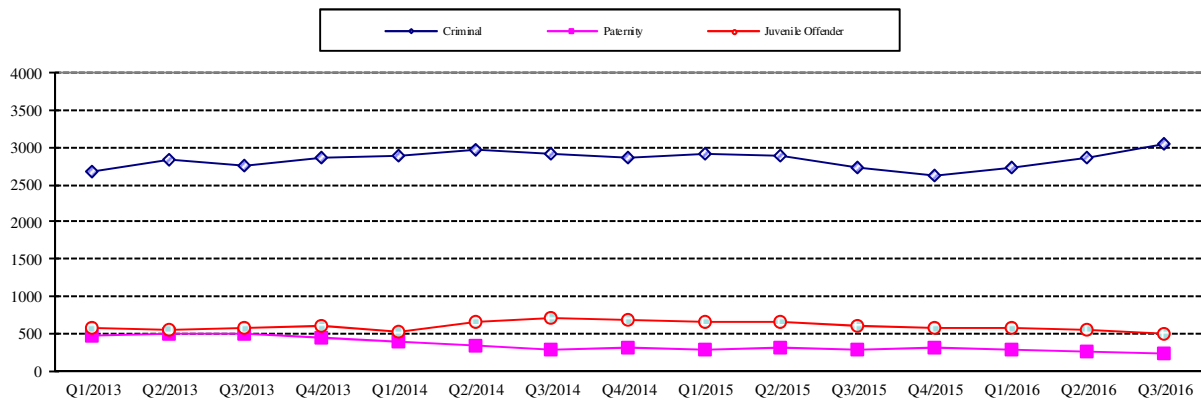


Chart 4-C. Active Pending Caseload at Quarter End:
Criminal, Juvenile Offender, Paternity and Dependency Cases Only



* Note: "General Civil" is specifically defined in this report. The category of "General Civil" does **not** include the following case types: domestic, probate, guardianship, adoption, paternity, mental illness, juvenile cases (dependency, at-risk youth, child-in-need of service), civil RALJ, and tax filings that don't require judicial resources ("matters filed with clerk"). Please check the Appendix for the cause codes in the "General Civil" category.

Table 5. Age of Pending Cases

King County Superior Court

Reporting Category	Age of Pending Cases and # of Cases in Each Age Interval							
	Q4/14	Q1/15	Q2/15	Q3/15	Q4/15	Q1/16	Q2/16	Q3/16*
Criminal (excl. RALJ): # of Cases	2866	2908	2882	2727	2619	2825	2849	3050
Age (days)								
Median (50 percentile)	119	96	97	106	110	95	99	101
95 percentile	794	525	549	572	610	395	541	542
# of Cases in Age Interval								
0 - 60 days (0 - 2 months)	835	1072	993	929	808	1020	997	1046
61 - 120 days (3 - 4 months)	612	627	689	572	586	547	671	629
121 - 180 days (5 - 6 months)	383	362	379	406	357	348	390	442
181 - 270 days (7 - 9 months)	337	308	321	331	337	306	292	389
> 270 days (> 9 months)	699	539	500	489	531	504	494	544
General Civil: # of Cases	7079	7215	7036	6851	6691	6686	6803	7044
Age (days)								
Median (50 percentile)	157	160	133	134	143	134	126	131
95 percentile	577	547	518	524	536	395	491	501
# of Cases in Age Interval								
0 - 120 days (0 - 4 months)	2889	2959	3299	3184	2942	3127	3302	3306
121 - 240 days (5 - 8 months)	1784	1793	1534	1675	1688	1643	1704	1885
241 - 360 days (9 - 12 months)	1209	1299	1115	965	1144	1063	997	1031
361 - 540 days (13 - 18 months)	760	789	775	726	590	567	556	531
541 - 720 days (19 - 24 months)	237	231	183	183	185	146	129	180
> 720 days (> 24 months)	200	144	130	118	142	140	115	111
Asbestos Cases (civil) ⁽¹⁾ : # of Cases	69	57	54	60	56	55	50	58
Age (days)								
Median (50 percentile)	374	253	329	271	332	304	353	339
95 percentile	916	1002	1093	1002	791	690	847	939
# of Cases in Age Interval								
0 - 120 days (0 - 4 months)	10	13	9	18	6	9	10	17
121 - 240 days (5 - 8 months)	14	11	9	9	17	5	5	9
241 - 360 days (9 - 12 months)	9	10	16	10	8	16	15	3
361 - 540 days (13 - 18 months)	14	10	9	16	16	11	9	17
541 - 720 days (19 - 24 months)	15	5	4	3	5	9	4	4
> 720 days (> 24 months)	7	8	7	4	4	5	7	8
Domestic: # of Cases	4579	4520	4497	4562	4234	4336	4416	4465
Age (days)								
Median (50 percentile)	129	126	117	115	128	120	114	116
95 percentile	593	538	559	563	623	359	601	559
# of Cases in Age Interval								
0 - 120 days (0 - 4 months)	2168	2229	2322	2347	2020	2187	2307	2272
121 - 240 days (5 - 8 months)	1388	1206	1113	1228	1175	1133	1088	1185
241 - 360 days (9 - 12 months)	561	661	643	529	604	589	571	551
361 - 540 days (13 - 18 months)	197	200	186	221	196	177	202	226
> 540 days (> 18 months)	265	224	233	237	239	250	248	231
Probate: # of Cases	908	511	562	581	580	624	703	715
Age (days)								
Median (50 percentile)	630	680	272	276	297	332	338	393
95 percentile	2333	869	847	932	1084	1025	1192	1277
# of Cases in Age Interval								
0 - 120 days (0 - 4 months)	116	172	165	139	149	161	181	160
121 - 240 days (5 - 8 months)	83	89	99	124	103	86	104	118
241 - 360 days (9 - 12 months)	82	72	77	59	86	81	82	72
361 - 540 days (13 - 18 months)	120	69	83	93	67	85	107	86
> 540 days (> 18 months)	497	109	138	166	175	211	229	279

Reflecting all documents received by 10/15/2016.

Table 5 (cont.). Age of Pending Cases

King County Superior Court

Reporting Category	Age of Pending Cases and # of Cases in Each Age Interval							
	Q4/14	Q1/15	Q2/15	Q3/15	Q4/15	Q1/16	Q2/16	Q3/16*
Guardianship: # of Cases	301	274	283	305	311	336	341	337
Age (days)								
Median (50 percentile)	86	64	71	65	70	67	78	81
95 percentile	798	544	520	541	409	364	456	506
# of Cases in Age Interval								
0 - 120 days (0 - 4 months)	166	175	196	198	215	222	217	214
121 - 240 days (5 - 8 months)	37	42	35	56	45	48	60	54
241 - 360 days (9 - 12 months)	28	24	17	18	31	32	27	35
361 - 540 days (13 - 18 months)	21	18	21	17	11	24	28	19
> 540 days (> 18 months)	49	15	14	16	9	10	9	15
Adoption: # of Cases	149	163	154	163	147	163	166	163
Age (days)								
Median (50 percentile)	120	110	106	133	155	101	112	106
95 percentile	924	848	939	938	1123	515	735	492
# of Cases in Age Interval								
0 - 120 days (0 - 4 months)	75	86	83	76	67	93	85	91
121 - 240 days (5 - 8 months)	25	31	27	40	24	21	37	34
241 - 360 days (9 - 12 months)	19	14	15	16	23	17	15	22
361 - 540 days (13 - 18 months)	13	16	16	12	13	17	13	11
> 540 days (> 18 months)	17	16	13	19	20	15	16	5
Paternity: # of Cases	300	282	316	293	310	278	261	232
Age (days)								
Median (50 percentile)	86	105	84	99	102	102	105	117
95 percentile	320	285	301	301	301	256	345	403
# of Cases in Age Interval								
0 - 120 days (0 - 4 months)	183	171	211	179	173	157	143	122
121 - 240 days (5 - 8 months)	77	85	76	89	95	86	77	71
241 - 360 days (9 - 12 months)	28	17	25	17	32	27	31	22
361 - 540 days (13 - 18 months)	7	7	4	8	10	7	8	14
> 540 days (> 18 months)	5	2	0	0	0	1	2	3
Mental Illness: # of Cases	121	143	162	122	90	95	118	82
Age (days)								
Median (50 percentile)	150	33	21	23	10	9	25	5
95 percentile	813	805	896	686	168	182	350	442
# of Cases in Age Interval								
0 - 120 days (0 - 4 months)	59	92	109	106	76	85	100	70
121 - 240 days (5 - 8 months)	9	9	16	4	11	3	8	0
> 240 days (> 8 months)	53	42	37	12	3	7	10	12
Juv Dependency (DEP): # of Cases	414	325	333	394	474	506	504	28
Age (days)								
Median (50 percentile)	106	99	76	106	90	137	170	82
95 percentile	762	386	432	517	562	455	690	382
# of Cases in Age Interval								
0 - 60 days (0 - 2 months)	132	119	125	122	180	131	114	119
61 - 120 days (3 - 4 months)	89	78	98	99	110	105	72	71
121 - 180 days (5 - 6 months)	37	53	32	65	49	82	78	42
181 - 270 days (7 - 9 months)	60	25	28	35	56	71	79	23
> 270 days (> 9 months)	95	50	50	73	79	117	161	34
Juv Termination (TER): # of Cases	225	175	169	194	164	148	181	128
Age (days)								
Median (50 percentile)	90	132	189	188	175	214	156	152
95 percentile	757	404	460	504	539	589	680	645
# of Cases in Age Interval								
0 - 60 days (0 - 2 months)	75	20	40	49	27	21	48	23
61 - 120 days (3 - 4 months)	64	48	11	36	27	19	33	29
121 - 180 days (5 - 6 months)	31	53	26	11	31	17	17	25
181 - 270 days (7 - 9 months)	23	31	49	24	20	35	21	14
> 270 days (> 9 months)	31	23	43	74	59	56	62	37

* Reflecting all documents received by 10/15/2016.

Table 5 (cont.). Age of Pending Cases

King County Superior Court

Reporting Category	Age of Pending Cases and # of Cases in Each Age Interval							
	Q4/14	Q1/15	Q2/15	Q3/15	Q4/15	Q1/16	Q2/16	Q3/16*
Juv. ARY/CHINS/OTHER: # of Cases	119	91	89	87	111	118	136	98
Age (days)								
Median (50 percentile)	248	170	261	353	207	218	225	169
95 percentile	3125	3264	3355	3390	3482	2850	3630	3813
# of Cases in Age Interval								
0 - 60 days (0 - 2 months)	24	28	22	20	23	26	37	25
61 - 120 days (3 - 4 months)	20	7	8	7	20	14	16	14
121 - 180 days (5 - 6 months)	9	11	4	9	11	14	10	16
181 - 270 days (7 - 9 months)	8	6	12	3	7	14	13	6
> 270 days (> 9 months)	58	39	43	48	50	50	60	37
Juvenile Truancy: # of Cases	821	1153	1271	1202	1329	1397	1430	1374
Age (days)								
Median (50 percentile)	76	93	134	222	274	143	158	236
95 percentile	995	1064	1148	1245	1324	470	899	1017
# of Cases in Age Interval								
0 - 60 days (0 - 2 months)	321	447	179	6	277	380	177	74
61 - 120 days (3 - 4 months)	149	255	392	33	115	216	335	47
121 - 180 days (5 - 6 months)	1	216	266	279	9	242	281	296
181 - 270 days (7 - 9 months)	168	13	256	485	253	11	261	430
> 270 days (> 9 months)	182	222	178	399	675	548	376	527
Juvenile Offender: # of Cases	677	646	651	614	581	571	538	504
Age (days)								
Median (50 percentile)	90	76	90	97	120	118	98	92
95 percentile	627	418	439	449	507	435	596	689
# of Cases in Age Interval								
0 - 60 days (0 - 2 months)	253	268	239	216	162	177	201	176
61 - 120 days (3 - 4 months)	139	169	163	145	129	113	99	109
121 - 180 days (5 - 6 months)	90	73	87	93	93	71	63	65
181 - 270 days (7 - 9 months)	85	51	75	77	87	75	44	44
> 270 days (> 9 months)	110	85	87	83	110	135	131	110
Criminal RALJ: # of Cases	155	140	138	154	156	146	131	107
Age (days)								
Median (50 percentile)	146	158	133	136	171	169	198	227
95 percentile	591	451	506	581	673	364	506	656
# of Cases in Age Interval								
0 - 60 days (0 - 2 months)	33	31	35	34	28	27	16	8
61 - 120 days (3 - 4 months)	28	20	28	32	20	23	21	17
121 - 180 days (5 - 6 months)	30	29	17	33	40	24	21	10
181 - 270 days (7 - 9 months)	28	31	30	25	42	37	27	27
> 270 days (> 9 months)	36	29	28	30	26	35	46	45
Civil RALJ: # of Cases	28	27	26	24	33	32	36	32
Age (days)								
Median (50 percentile)	103	105	101	110	93	106	108	84
95 percentile	388	279	301	248	304	339	476	522
# of Cases in Age Interval								
0 - 60 days (0 - 2 months)	7	7	8	6	13	9	9	11
61 - 120 days (3 - 4 months)	9	8	9	7	7	9	14	12
121 - 180 days (5 - 6 months)	5	8	5	7	5	7	6	5
181 - 270 days (7 - 9 months)	5	2	1	3	5	3	3	1
> 270 days (> 9 months)	2	2	3	1	3	4	4	3

* Reflecting all documents received by 10/15/2016.

Table 6. Seattle vs. Regional Justice Center (KNT): Filing, Resolution, Pending Caseload (%)

King County Superior Court

	Q3/15		Q4/15		Q1/16		Q2/16		Q3/16	
	SEA	KNT	SEA	KNT	SEA	KNT	SEA	KNT	SEA	KNT
Filings Total <i>(excl. filings with clerk)</i>	64%	36%	63%	37%	64%	36%	63%	37%	65%	35%
Criminal (excl. RALJ)	53%	47%	55%	45%	57%	43%	56%	44%	56%	44%
General Civil (excl. RALJ)	57%	43%	55%	45%	59%	41%	55%	45%	56%	44%
Domestic	61%	39%	62%	38%	61%	39%	59%	41%	61%	39%
Probate	76%	24%	77%	23%	76%	24%	78%	22%	75%	25%
Guardianship	63%	37%	56%	44%	62%	38%	61%	39%	61%	39%
Adoption	70%	30%	70%	30%	77%	23%	67%	33%	75%	25%
Paternity	45%	55%	43%	57%	42%	58%	52%	48%	56%	44%
Mental Illness	100%	---	100%	---	100%	---	100%	---	100%	---
Juv. Dependency (DEP)	37%	63%	38%	62%	39%	61%	47%	53%	69%	31%
Juv. Termination (TER)	62%	38%	39%	61%	64%	36%	60%	40%	73%	27%
Juvenile ARY/CHINS/Other	44%	56%	48%	52%	43%	57%	45%	55%	53%	47%
Juvenile Truancy	71%	29%	48%	52%	42%	58%	44%	56%	85%	15%
Juvenile Offender	100%	---	100%	---	100%	---	100%	---	100%	---
Criminal RALJ	91%	9%	93%	7%	98%	2%	96%	4%	71%	29%
Civil RALJ	80%	20%	93%	7%	71%	29%	75%	25%	80%	20%
Resolution Total <i>(excl. filings with clerk)</i>	63%	37%	62%	38%	65%	35%	63%	37%	63%	37%
Criminal (excl. RALJ)	54%	46%	52%	48%	57%	43%	53%	47%	56%	44%
General Civil (excl. RALJ)	54%	46%	55%	44%	59%	41%	54%	46%	54%	46%
Domestic	59%	41%	60%	40%	61%	49%	60%	40%	60%	40%
Probate	77%	23%	76%	24%	76%	24%	78%	22%	76%	24%
Guardianship	64%	36%	59%	41%	55%	45%	63%	37%	57%	43%
Adoption	64%	36%	75%	25%	72%	28%	70%	30%	72%	28%
Paternity	52%	48%	46%	54%	52%	48%	26%	74%	61%	39%
Mental Illness	100%	---	100%	---	100%	---	100%	---	100%	---
Juv. Dependency (DEP)	41%	59%	38%	62%	39%	61%	48%	52%	46%	54%
Juv. Termination (TER)	63%	37%	49%	51%	57%	43%	48%	52%	54%	46%
Juvenile ARY/CHINS/Other	33%	67%	42%	58%	43%	57%	38%	62%	60%	40%
Juvenile Truancy	79%	21%	44%	56%	54%	46%	48%	52%	38%	62%
Juvenile Offender	100%	---	100%	---	100%	---	100%	---	100%	---
Criminal RALJ	97%	3%	97%	3%	81%	19%	90%	10%	98%	2%
Civil RALJ	100%	---	75%	25%	100%	---	75%	25%	79%	21%
Pending Total <i>(excl. filings with clerk)</i>	64%	36%	64%	36%	63%	37%	63%	37%	65%	35%
Criminal (excl. RALJ)	54%	46%	57%	43%	57%	43%	58%	42%	59%	41%
General Civil (excl. RALJ)	68%	32%	68%	32%	68%	32%	68%	32%	68%	32%
Domestic	59%	41%	60%	40%	60%	40%	60%	40%	60%	40%
Probate	78%	22%	80%	20%	79%	21%	79%	21%	77%	23%
Guardianship	59%	41%	57%	43%	60%	40%	59%	41%	62%	38%
Adoption	76%	24%	71%	29%	76%	24%	74%	26%	76%	24%
Paternity	55%	45%	53%	47%	48%	52%	62%	38%	58%	42%
Mental Illness	100%	---	100%	---	100%	---	100%	---	100%	---
Juv. Dependency (DEP)	41%	59%	39%	61%	37%	63%	37%	63%	61%	39%
Juv. Termination (TER)	61%	39%	54%	46%	55%	45%	59%	41%	68%	32%
Juvenile ARY/CHINS/Other	64%	36%	60%	40%	60%	40%	62%	38%	63%	37%
Juvenile Truancy	51%	41%	51%	49%	48%	52%	47%	53%	50%	50%
Juvenile Offender	100%	---	100%	---	100%	---	100%	---	100%	---
Criminal RALJ	90%	10%	89%	11%	93%	7%	95%	5%	91%	9%
Civil RALJ	79%	21%	88%	12%	75%	25%	75%	25%	78%	22%

Reflecting all documents received by 10/15/2016.

Table 7. Quarterly Utilization of Pro Tem Judges/Commissioners ⁽¹⁾

Category	Q2/14	Q3/14	Q4/14	Q1/15	Q2/15	Q3/15	Q4/15	Q1/16	Q2/16*	Q3/16*
Grand Total	1610	1510	1510	797	1226	1054	1733	769	1157	859
Judge FTE Equivalent ⁽³⁾	3.6	3.4	3.4	1.8	2.7	2.3	3.9	1.7	2.6	1.9
By Work Type										
Pro Tem Judge	412	332	459	70	97	130	236	99	191	134
Pro Tem Commissioner	1028	1178	1051	709	1117	925	1497	679	966	725
Unspecified	170	0	0	17	13	0	0	0	0	0
By Location										
KCCCH	532	655	916	317	454	346	882	420	394	346
MRJC	505	377	273	193	273	326	501	193	239	214
Juvenile	282	283	276	237	312	260	234	123	405	201
ITA	158	195	46	33	174	122	117	33	119	98
Other	133	0	0	17	13	0	0	0	0	0
By Calendar Type										
Criminal	128	75	262	13	51	112	185	70	50	55
Civil	74	32	22	0	0	0	0	3	0	0
Ex Parte	536	333	170	102	219	100	264	64	134	95
Family Law/Domestic	309	506	715	396	453	461	929	470	421	397
Dependency	217	119	133	183	225	240	172	81	251	120
Juvenile Offender	103	144	119	47	45	18	51	27	125	69
BECCA	30	20	13	7	42	3	11	16	29	13
ITA	158	195	46	33	174	122	117	33	119	98
Juvenile Drug Court	9	0	0	0	0	0	0	0	0	0
Family Treatment Court	6	0	0	0	0	0	0	0	0	0
Plea Calendar	42	71	8	0	0	0	0	0	4	11
Status/Non-Compliance	0	6	13	0	4	0	0	7	16	2
Other or Unspecified	0	10	13	17	13	0	0	0	9	0
By Reason										
Vacation Backfill	565	572	674	396	527	673	818	397	582	499
Medical Backfill	112	208	292	147	156	168	294	211	213	223
Duty Time	210	249	219	211	244	132	288	134	189	89
Conference Coverage	259	229	4	0	257	0	59	0	134	24
Congestion	168	80	259	8	30	69	126	23	29	14
Vacancy Coverage	263	109	0	0	0	0	5	4	0	0
Other	34	64	63	35	13	12	145	0	11	10

(1) This table is based on the time sheet for compensation

(2) Judge FTE Equivalent = # of hours / [7.5 hours/day * 20 days/month * 3 months] = # of hours/450.

Data for the most current quarter are incomplete at reporting time and will be updated in next quarterly report.

The statistics on Pro Tem judge/commissioner use provide information on the external help the court has obtained in order to handle the workload. The data are collected on the time sheet for compensation (therefore it does not include unpaid volunteering or visiting judges/commissioners). The database on Pro Tem judges/commissioners is managed by the Administrative Services Department (ASD) of King County Superior Court. The Pro Tem total hours presented in this section are provided quarterly by ASD.

Table 8. Family Law Activity

	1ST QTR, 2015		2ND QTR, 2015		3RD QTR, 2015		4TH QTR, 2015		1ST QTR, 2016		2ND QTR, 2016		3RD QTR, 2016	
	HRGS	ORDS	HRGS	ORDS	HRGS	ORDS	HRGS	ORDS	HRGS	ORDS	HRGS	ORDS	HRGS	ORDS
SEATTLE														
FAM.LAW	381	1881	383	1814	524	1833	510	1665	451	1673	483	1643	465	1546
DAILY AVG.	6	31	6	30	9	30	8	27	7	27	8	27	8	25
PATERNITY	47	1112	49	1035	112	964	117	923	103	909	67	752	76	840
DAILY AVG.	1	18	1	17	2	16	2	15	2	15	1	12	1	14
DOM. VIOL.	228	545	239	576	261	598	229	643	232	666	236	666	225	707
DAILY AVG.	4	9	4	9	4	10	4	11	4	11	4	11	4	12
	1ST QTR, 2015		2ND QTR, 2015		3RD QTR, 2015		4TH QTR, 2015		1ST QTR, 2016		2ND QTR, 2016		3RD QTR, 2016	
	HRGS	HRGS	HRGS	ORDS	HRGS	ORDS	HRGS	ORDS	HRGS	ORDS	HRGS	ORDS	HRGS	ORDS
KENT														
FAM.LAW	285	1414	363	1433	380	1400	403	1362	372	1309	368	1304	339	1268
DAILY AVG.	5	23	6	23	6	23	7	22	6	21	6	21	6	21
PATERNITY	37	730	41	757	57	764	54	734	72	763	46	697	59	622
DAILY AVG.	1	12	1	12	1	13	1	12	1	13	1	11	1	10
DOM. VIOL.	439	666	478	704	395	782	356	749	338	719	323	823	334	826
DAILY AVG.	7	11	8	12	6	13	6	12	6	12	5	13	5	14
	1ST QTR, 2015		2ND QTR, 2015		3RD QTR, 2015		4TH QTR, 2015		1ST QTR, 2016		2ND QTR, 2016		3RD QTR, 2016	
	HRGS	ORDS	HRGS	ORDS	HRGS	ORDS	HRGS	ORDS	HRGS	ORDS	HRGS	ORDS	HRGS	ORDS
SEA/KNT														
TOTAL	1417	6348	1553	6319	1729	6341	1669	6076	1568	6039	1523	5885	1498	5809
DAILY AVG.	23	104	25	104	28	104	27	100	26	99	25	96	25	95

The statistics on family law and Ex Parte activity are obtained directly from SCOMIS using the appropriate docket codes.

Table 9. Ex Parte Activity

	3RD QTR, 2015		4TH QTR, 2015		1ST QTR, 2016		2ND QTR, 2016		3RD QTR, 2016	
	HRGS	ORDS	HRGS	ORDS	HRGS	ORDS	HRGS	ORDS	HRGS	ORDS
SEATTLE	69	256	102	321	63	321	65	282	65	289
ADOP/PAT	69	256	102	321	63	321	65	282	4	429
DOM. VIOL.	2	446	9	417	10	388	8	405	317	622
OTH. CIVIL	262	551	237	560	241	544	281	609	375	1688
DOMESTIC	547	1893	594	2176	462	1774	401	1845	1203	2445
PROB/GDN	1259	2379	1226	2306	1258	2576	1345	2781	1964	5473
SUBTOTAL	2139	5525	2168	5780	2034	5603	2100	5922	32	90
DAILY AVG.	35	91	36	95	33	92	34	97	65	289
SEA TLE MAIL-IN										
ADOP/PAT	----	1	----	0	----	0	----	0	----	0
DOM. VIOL.	----	0	----	0	----	0	----	1	----	0
OTH. CIVIL	----	205	----	151	----	148	----	300	----	170
DOMESTIC	----	40	----	29	----	51	----	27	----	22
PROB/GDN	----	110	----	78	----	89	----	97	----	89
SUBTOTAL	----	356	----	258	----	288	----	425	----	281
DAILY AVG.	----	6	----	4	----	5	----	7	----	5
KENT										
ADOP/PAT	35	119	29	93	29	99	35	108	32	95
DOM. VIOL.	5	602	1	490	1	515	2	582	1	612
OTH. CIVIL	326	539	328	493	246	416	299	550	326	579
DOMESTIC	398	1468	373	1336	294	1179	375	1251	398	1348
PROB/GDN	399	935	452	906	385	835	471	816	473	760
SUBTOTAL	1163	3663	1183	3318	955	3044	1182	3307	1230	3394
DAILY AVG.	19	60	19	54	16	50	19	54	20	56
KENT MAIL-IN										
ADOP/PAT	----	2	----	1	----	1	----	0	----	0
DOM. VIOL.	----	0	----	0	----	0	----	0	----	0
OTH. CIVIL	----	89	----	46	----	41	----	68	----	43
DOMESTIC	----	21	----	11	----	2	----	21	----	11
PROB/GDN	----	30	----	31	----	34	----	34	----	32
SUBTOTAL	----	142	----	89	----	78	----	123	----	86
DAILY AVG.	----	2	----	1	----	1	----	2	----	1
ALL SEA AND KENT										
TOTAL	3302	9686	3351	9445	2989	9014	3282	9778	3194	9235
AVERAGE	54	159	55	154	49	148	54	160	52	151

Note: Statistical report on Ex Parte via Clerk commenced in January 2009 and discontinued in 2016 when technology in E-filing allows orders being electronically signed by judicial officers without a department designation.

Appendix Glossary and Definition

General Definition

Active Status

A case is active if it is not on suspense status (see Suspense Status).

Case

A case is defined as a filing with an assigned case number (or a case number plus a defendant connection code in pre-1990 criminal filings).

Completion

A case is completed when dispositive document is filed with the court following resolution.

Jury Trial

A hearing is reported as a jury trial if the jury is impaneled.

New Case

A new case is an original filing with new case number assigned.

Non-Jury Trial

A hearing is reported as a non-jury trial if an opening statement is made, waived, or reserved. A juvenile fact finding hearings is reported as a non-jury trial.

Pending Case

A case is defined as pending if it is unresolved and active (not in suspense).

Reactivated Case

A case returns to active status from suspense status during the reporting period.

Re-opened Cases

A case is re-opened if it has been previously completed but returns to the court for supplement or change of the original case resolution. A re-opened case does not have a new case number. Only resolved cases can be "re-opened". (Note: measurement not available as of July 1996. SCOMIS capacity may exist after conversion to DB2 in the future).

Resolution

A case is resolved if all issues in the complaint are fully adjudicated.

Suspended Case

A case is placed in suspense status from active status during the reporting period.

Suspense Status

A case is on suspense status if it is on warrant, appeal, stay, mediation, arbitration ("Deferred Prosecution" is not a suspense status, but is treated as a resolution).

Trial

A hearing set before a judge or jury in which all the issues in the case are meant to be resolved. A trial normally includes opening statements to the court or jury stating what the evidence will show, introduction of witnesses and exhibits for direct and cross examination, final arguments to the court or jury in which counsel argue both the evidence and the law, and judgment by the court or jury stating what the facts of the case are and what law applies to the facts. In a jury case, it also includes the selection of the jury. A trial can be held

for one or more cases. A single trial may be held to adjudicate more than one case (as defined above).

Post-resolution Modifications

In this report, we also report the post-resolution modifications for case type 3 (domestic) and 5 (paternity). These numbers are based on the tracks (DMOD and DTBA) opened after the original resolution date (i.e., if the track beginning date is after the resolution date).

Section I. Filing Activity

Additional Filings with Clerk

Filings with clerk without assigning a SCOMIS case number. This reporting category consists of search warrants, wire taps, extradition, oaths and orders pertaining to Pro Tem judge/commissioners/Court

Reporters/Bailiffs, and other "non-case" filings as recorded under 12050 system.

Annual Filings

Total number of new case filings during the calendar year (January 1 to December 31).

Adoption Cases

This reporting category includes the following "cause-of-action" codes within SCOMIS case type 5:

- Relinquishment (REL)
- Termination of Parent/Child Relationship (TER)
- Adoption (ADP)
- Miscellaneous (MSC)
- Name Change - Confidential (CHN)
- Initial Pre-Placement Report Filed with Clerk (PPR)

General Civil Cases

"General Civil" cases include all civil matters other than Domestic, Probate, Guardianship, Adoption, Paternity and appeals from courts of limited jurisdiction and "Matters Filed with Clerk". "General civil" cases include small claims as identified by the "Small Claim Track". This reporting category includes the following "cause-of-action" codes within SCOMIS case type 2:

- Administrative Law Review (ALR)
- Change of Name - Non-Confidential (CHN)
- Collection (COL)
- Commercial (COM)
- Condemnation (CON)
- Domestic Violence Protection (DVP)
- Emancipation of Minor (EOM)
- Foreclosure (FOR)
- Civil Harassment (HAR)
- Injunction (INJ)
- Other Malpractice (MAL)
- Medical Malpractice (MED)
- Meretricious Relationship (MER)
- Malicious Harassment (MHA)
- Miscellaneous (MSC)
- Minor Settlement (MST) - as of 10/1/96, under Guardianship
- Petition of Civil Commitment- Sexual Predator (PCC)

Property Fairness (PFA)

Personal Injury (PIN)
Property Damage (PRP)
Quiet Title (QTI)
Small Claims (LCA/LCI on "Small Claim Track")
Seizure of Property from the Commission of a Crime (SPC)
Seizure of Property Resulting from a Crime (SPR)
Tort Motor Vehicle (TMV)
Tort Other (TTO)
Unlawful Detainer (UND)
Wrongful Death (WDE)
Writ of Habeas Corpus (WHC)
Miscellaneous Writ (WMW)
Writ of Mandamus (WRM)
Writ of Restitution (WRR)
Writ of Review (WRV)

Civil RALJ Cases

Civil appeals from courts of limited jurisdiction (excluding small claims as identified by the "Small Claim Track"). Civil RALJ includes the following "cause-of-action" reporting categories:

Lower Court Appeal - Civil and "Not a Small Claim"
Lower Court Appeal - Infraction and "Not a Small Claim"

Note: The Civil RALJ cases are determined based on both SCOMIS "cause-of-action" code (LCA and LCI) within SCOMIS case type 2 and the "Small Claim Track".

Criminal Cases (excl. RALJ)

Adult criminal cases, excluding appeals from courts of limited jurisdiction. This reporting category includes the following crime categories within SCOMIS case type 1:

Homicide
Sex Crime
Robbery
Assault
Theft/Burglary
Motor Vehicle Theft
Controlled Substance
Other Felony
Others (Misdemeanor, Non-charge Case)

Criminal RALJ Cases

Criminal appeals from courts of limited jurisdiction. This reporting category includes all SCOMIS case type 1 cases that have an appeal from lower court field of "Yes".

Domestic Cases

This reporting category includes the following "cause-of-action" codes within SCOMIS case type 3:

Annulment – Invalidity (INV)
Child Custody (CUS)
Dissolution With Children Of The Marriage (DIC)
Dissolution With No Children Of The Marriage (DIN)
Dissolution of Domestic Partnership – With Children (DPC)
Dissolution of Domestic Partnership – With No Children (DPN)
Foreign Judgment (FJU)
Invalidity – Domestic Partnership (INP)
Mandatory Wage Assignment (MWA)
Miscellaneous (MSC)
Modification (MOD)
Modification – Support Only (MDS)
Out-Of-State Child Custody (OSC)
Parenting Plan / Child Support (PPS)
Reciprocal, Respondent In-County (RIC)
Reciprocal, Respondent Out-of-County (ROC)
Legal Separation (SEP)
Legal Separation – Domestic Partnership (SPD)

Guardianship Cases

This reporting category includes the following "cause-of-action" codes within SCOMIS case type 4:

Guardianship/Estate (G/E)
Guardianship (GND)

Limited Guardianship (LGD)
Minor Settlement (MST)

Juvenile ARY/CHINS Cases

Juvenile dependency cases, excluding truancy cases and DEP cause code. This reporting category includes following "cause-of-action" codes within SCOMIS case type 7:

Alternative Residential Placement (ARP)
At-Risk Youth (ARY)
Child in Need of Service (CNS)

Juvenile Dependency Cases

This reporting category includes following "cause-of-action" codes within SCOMIS case type 7:

Dependency (DEP)
Termination (TER)
Developmental Disability (DDP)
Guardianship Foster Children (GFC)
Reinstatement of Parental Rights (RPR)
Extension of Foster Care (EFC)
Relative Visitation (RVS)

Juvenile Offender Cases

This reporting category includes the following crime categories in SCOMIS case type 8:

Homicide
Sex Crime
Robbery
Assault
Theft/Burglary
Motor Vehicle Theft
Controlled Substance
Other Felony
Others (Misdemeanor, Non-charge Case)

Juvenile Truancy Cases

Mandatory truancy filings started on 10/01/1995. This reporting category includes the following "cause-of-action" code within SCOMIS case type 7:

Truancy (TRU)

Matters Filed with Clerk

Filings with clerk (case numbers assigned), but requiring little or no judicial action. This reporting category includes the following "cause-of-action" codes within SCOMIS case type 2:

Abstract of Judgment (ABJ)
Foreign Judgment (FJU)
Tax Warrant (TAX)
Transcripts of Judgment (TRJ)

Mental Illness Cases

This reporting category includes all "cause-of-action" codes within SCOMIS case type 6:

Alcoholic Treatment (ALT)
Mental Illness - Adult (MI)
Mental Illness - Juvenile (MIJ)

Paternity Cases

This reporting category includes the following "cause-of-action" codes within SCOMIS case type 5:

Modification (MOD)
Paternity (PAT)
Paternity/URES/EIFSA (PUR)

Probate Cases

This reporting category includes the following "cause-of-action" codes within SCOMIS case type 4:

Absentee (ABS)
Disclaimer (DSC)
Estate (EST)
Foreign Will (FNW)
Miscellaneous (MSC)
Non-Probate Notice to Creditors (NNC)
Will Only (WLL)

Total Cases

New cases with case numbers assigned, excluding “Matters Filed with Clerk” and “Additional Filings with Clerk”.

Year-to-Date Filings

Total number of new filings since the beginning of calendar year (January 1) to the end of reporting period.

Section II. Resolution Category

Adoption - Resolved by Trial

Court Decision after Non-Jury Trial (CDAT)

Adoption - Uncontested

Consolidated Case (CONS)
Uncontested Resolution (UNDS)

Adoption - Settlement/Dismissal

Closed by Court Order after a Hearing (CLCO)
Dismissal without Trial (DSM)
Dismissal after Non-Jury Trial Commencement (DAT)
Settled after Non-Jury Trial Commencement (SAT)
Settled by Parties/Agreed Judgment (STPR)

Adoption - Closure by Clerk

Dismissal/Closure by Clerk (DSCK)

Adoption - Others

Change of Venue/Jurisdiction (CHV)
Other Non-specified Resolutions

Civil - Resolved by Jury Trial

Jury Verdict after Trial (JVAT)

Civil - Resolved by Non-Jury Trial

Court Decision after Non-Jury Trial (CDAT)

Civil - Summary Judgment

Summary Judgment (SMJG)

Civil - Default/Uncontested

Consolidated Case (CONS)
Default Judgment (DFJG)
Uncontested Resolution (UNDS)

Civil - Arbitration

Settle by Arbitration (ARBA)

Civil - Settlement/Dismissal

Closed by Court Order after a Hearing (CLCO)
Dismissal after Non-Jury Trial (DAT)
Dismissal after Jury Trial (DJT)
Dismissal (DSM)
Settled after Non-Jury Trial Commencement (SAT)
Settled after Jury Trial Commencement (SJT)
Settled by Parties/Agreed Judgment (STPR)

Civil - Closure by Clerk

Dismissal/Closure by Clerk (DSCK)

Civil - Others

Transferred to Federal bankruptcy Court (BANK)
Change of Venue/Jurisdiction (CHV)
Other Non-specified Resolutions

Civil RALJ - RALJ Decision

Court Decision to Affirm Appeal/review (CDTA)
Court Decision to Modify Appeal/Review (CDTM)
Court Decision to Reverse Appeal/review (CDTR)

Civil RALJ - Dismissal

Dismissal and Remand of Appeal/Review (DSRM)

Civil RALJ - Others

Other Non-specified Resolutions

Comparison with Court Standard

Percentage of cases actually falling within the Court’s standard benchmark.

Court Standard

Benchmarks set by a state advisory committee and adopted by the court indicating percentage of cases to be resolved at certain age (in months, 1 month = 30 days as used in the Advisory Case Processing Time Standard as published in the Court Rule).

Court standard is based on timelines as suggested by State Advisory Committee. For a case type with no time standard, the standard for a similar case type is adopted if appropriate.

Criminal: 90% by 4 months, 98% by 6 months, 100% by 9 months.

Civil: 90% by 12 months, 98% by 18 months, 100% by 24 months.

Domestic: 90% by 8 months, 98% by 10 months, 100% by 14 months.

Probate/Guardianship: 90% by 8 months, 98% by 18 months, 100% by 36 months.

Adoption/Paternity: 90% by 8 months, 98% by 10 months, 100% by 14 months.

Mental Illness/Juvenile Truancy: No standard yet.

Juvenile Dependency: 90% by 8 months, 98% by 10 months, 100% by 14 months.

Juvenile Offender: 90% by 4 months, 98% by 6 months, 100% by 9 months.

Criminal RALJ/Civil RALJ: 90% by 4 months, 98% by 5 months, 100% by 6 months.

Criminal - Resolved by Jury Trial

Acquittal by Jury (AQJV)
Convicted - Jury Verdict after Trial (CVJV)

Criminal - Resolved by Non-Jury Trial

Acquittal by Court (AQCT)
Convicted - Court Decision after Non-Jury Trial (CVCT)

Criminal - Resolved by Guilty Plea

Guilty Plea (GP)
Guilty Plea after Non-Jury Trial Commencement (GPAT)
Guilty Plea after Jury Trial Commencement (GPJT)

Criminal - Dismissal

Dismissal after Non-Jury Trial Commencement (DAT)
Dismissal after Jury Trial Commencement (DJT)
Dismissal (DSM)

Criminal - Others

Change of Venue (CHV)
Consolidated Case (CONS)
Continued Order of Prosecution with Completion (CTOP)*
Deferred Prosecution (DFPD)
Dismissal/Closure by Clerk (DSCK)
Governor’s warrant (GW)
Not Guilty by Reason of Insanity (NGRI)
Uncontested Resolution (UNDS)
Waiver of Extradition (WE)
Other Non-specified Resolutions

* Note: For adult criminal cases, “CTOP” does not necessarily constitute resolution. An adult criminal case with a “CTOP” as resolution code is counted as a resolved case only if a completion code exists along with the “CTOP”. If the resolution code is CTOP and there is no completion code, then the case is treated as unresolved. The primary reason for combining “CTOP” with a completion code is to determine

resolution for drug court cases (CTOP is entered in the SCOMIS resolution field as soon as a defendant enrolls in Drug Court). This rule on “CTOP” applies to adult criminal cases only.

Criminal RALJ - RALJ Decision

Court Decision to Affirm Appeal/review (CDTA)
Court Decision to Modify Appeal/Review (CDTM)
Court Decision to Reverse Appeal/review (CDTR)

Criminal RALJ - Dismissal

Dismissal and Remand of Appeal/Review (DSRM)

Criminal RALJ - Others

Other Non-specified Resolutions

Domestic - Resolved by Trial

Court Decision after Non-Jury Trial (CDAT)

Domestic - Default/Uncontested

Consolidated Case (CONS)
Default Judgment (DFJG)
Uncontested Resolution (UNDS)

Domestic - Settlement/Dismissal

Settled by Arbitration (ARBA)
Closed by Court Order after a Hearing (CLCO)
Dismissal after Non-Jury Trial Commencement (DAT)
Dismissal (DSM)
Settled after Non-Jury Trial Commencement (SAT)
Settled by Parties/Agreed Judgment (STPR)

Domestic - Closure by Clerk

Dismissal/Closure by Clerk (DSCK)

Domestic - Others

Change of Venue/Jurisdiction (CHV)
Summary Judgment (SMJG)
Other Non-specified Resolutions

Guardianship - Guardian Appointed

Guardian Appointed (PRGA)

Guardianship - Dismissal

Closed by Court Order after a Hearing (CLCO)
Dismissal (DSM)

Guardianship - Closure by Clerk

Dismissal/Closure by Clerk (DSCK)

Guardianship - Others

Change of Venue/Jurisdiction (CHV)
Consolidated Case (CONS)
Uncontested Resolution (UNDS)
Other Non-specified Resolutions

Juvenile Dependency - Finding of Dependency

Approved Petition (APP)

Juvenile Dependency - Dismissal

Dismissal (DSM)

Juvenile Dependency - Others

Change of Venue/Jurisdiction (CHV)
Consolidated Case (CONS)
Transfer of Jurisdiction (TRJU)
Other Non-specified Resolutions

Juvenile Offender - Resolved by Trial

Acquittal by Court (AQCT)
Convicted - Court Decision after Adjudictory Hearing (CVCT)

Juvenile Offender - Resolved by Guilty Plea

Guilty Plea before Adjudictory Hearing Commencement (GP)
Guilty Plea after Adjudictory Hearing Commencement (GPAT)

Juvenile Offender - Dismissal

Dismissal after Adjudictory Hearing Commencement (DAT)
Dismissal (DSM)

Juvenile Offender - Others

Change of venue (CHV)
Dismissal/Closure by Clerk (DSCK)
Consolidated Case (CONS)

Continued Prosecution (CTOP)
Decline of Jurisdiction (DECL)
Uncontested Resolution (UNDS)
Other Non-specified Resolutions

Juvenile Truancy - Finding of Truancy

Approved Petition (APP)

Juvenile Truancy - Dismissal

Dismissal (DSM)

Juvenile Truancy - Others

Change of Venue (CHV)
Consolidated Case (CONS)
Transfer of Jurisdiction (TRJU)
Other Non-specified Resolutions

Mental Illness - Court Decision to Commit

Court Decision to Commit (CDTC)

Mental Illness - Closed by Court

Closed by Court (CLCO)

Mental Illness - Dismissal

Dismissal (DSM)

Mental Illness - Others

Change of Venue/Jurisdiction (CHV)
Uncontested Resolution (UNDS)
Other Non-specified Resolutions

Paternity - Resolved by Trial

Court Decision after Non-Jury Trial (CDAT)

Paternity - Summary Judgment

Summary Judgment (SMJG)

Paternity - Default/Uncontested

Consolidated Case (CONS)
Default Judgment (DFJG)
Uncontested Resolution (UNDS)

Paternity - Settlement/Dismissal

Settled by Arbitration (ARBA)
Closed by Court Order after a Hearing (CLCO)
Dismissal after Non-Jury Trial Commencement (DAT)
Dismissal (DSM)
Settled after Non-Jury Trial Commencement (SAT)
Settled by Partied/Agreed Judgment (STPR)

Paternity - Closure by Clerk

Dismissal/Closure by Clerk (DSCK)

Paternity - Others

Change of Venue (CHV)
Other Non-specified Resolutions

Percentile

Percent of cases resolved at a given age. For example, if resolved cases had a 98 percentile of 12 months, it means that 98% of the cases were resolved within the age of 12 months, or conversely 2% of the cases were resolved after 12 months, not counting suspense time.

Probate - Personal Representative Appointed

Non-Intervention Probate (NIP)
Personal Representative Appointed (PRGA)

Probate - Dismissal

Closed by Court Order after a Hearing (CLCO)
Dismissal (DSM)

Probate - Closure by Clerk

Dismissal/Closure by Clerk (DSCK)

Probate - Others

Change of Venue (CHV)
Consolidated Case (CONS)
Uncontested Resolution (UNDS)
Other Non-specified Resolutions

Backlogged Cases

Active pending cases with an age exceeding the court-adopted time standard for each specific case type (recommended by the State Advisory Committee, see definition for *Court Standard*).

Section III. Pending Caseload

Adjustment

Adjustment made because of vacating of resolutions, or change in suspense status between two reporting period.

End Pending

Total number of pending cases at the end of reporting period.

Previous Pending

Total number of pending cases at the beginning of reporting period.

Resolution Rate

Resolution rate is defined as the ratio of number of resolutions to number of new filings (i.e., number of resolutions divided by number of new filings) during the reporting period. The resolution rate measures the relative pace of resolution in relation to the pace of new filings. A resolution rate of greater than 1 indicates the number of resolutions exceeds the number of new filings.

On-review Status

Cases that have been resolved (post-resolution) but still need court resources for periodic review and other remaining outstanding issues.

Probate (EST), Paternity (PAT) and Dependency (DEP): Resolved and not completed (paternity or dependency established, but outstanding issues remain).

Guardianship (GDN,LGD,G/E): Resolved and on tracks of G1,G2,G3,GE or GD; Minor Settlement (MST): Resolved with a future hearing date.

Section IV. Age of Pending Cases

Case Age

The age of a case is the time (number of days) since the filing date, less any suspense time if applicable.

Median Age

The median age is the time that 50% of the cases are under and 50% are above the given age. For example, if pending cases have a median age of 12 months, it means that 50% of the pending cases are within the age of 12 months, and 50% of pending cases are over 12 months. The median age is more robust to cases with extreme age values than the average age.

Suspense Time

Time (days) that a case is on suspense status before its resolution. If a case has more than one suspense between filing and resolution, the suspense time is the total from all suspenses. Time on suspense status after resolution (e.g., appeals) is not counted.