

King County Superior Court
Quarterly Statistical Report

Fourth Quarter 2016

Department of Judicial Administration
Prepared by: Shiquan Liao, Ph.D., Statistician

Release Date: January 20, 2017

Report #: QTR-2016-4

Table 1. Year-to-Date Filing Activity

King County Superior Court

Reporting Category	Year-to-Date and Annual Filing Activity ⁽¹⁾					2015-2016 change (+ means "increase")		% of 2016 Total Filing ⁽²⁾
	2012	2013	2014	2015	2016	Cases	Percentage	
Total (incl. RALJ)								
Year-to-Date Filing	54834	52755	52224	51652	51472	-180	-0.3%	
Annual Filing	54834	52755	52224	51652				
Criminal (excl. RALJ)								
Year-to-Date Filing	5942	6045	6213	6237	6632	+395	+6.3%	12.9%
Annual Filing	5942	6045	6213	6237				
General Civil (excl. Asbestos)								
Year-to-Date Filing	24477	22347	21378	21181	21181	0	0%	41.2%
Annual Filing	24477	22347	21378	21181				
Asbestos Cases (civil) ⁽³⁾								
Year-to-Date Filing	36	63	40	36	41	+5	+13.9%	0.1%
Annual Filing	36	63	40	36				
Domestic								
Year-to-Date Filing	7678	7897	7921	7559	7512	-47	-0.6%	14.6%
Annual Filing	7678	7897	7921	7559				
Probate								
Year-to-Date Filing	5492	5844	5920	6002	6073	+71	+1.2%	11.8%
Annual Filing	5492	5844	5920	6002				
Guardianship								
Year-to-Date Filing	879	884	928	969	1008	+39	+4.0%	2.0%
Annual Filing	879	884	928	969				
Adoption								
Year-to-Date Filing	511	483	470	460	458	-2	-0.4%	0.9%
Annual Filing	511	483	470	460				
Paternity								
Year-to-Date Filing	1161	931	702	650	528	-122	-18.8%	1.1%
Annual Filing	1161	931	702	650				
Mental Illness								
Year-to-Date Filing	3591	3678	3852	4004	4152	+148	+3.7%	8.1%
Annual Filing	3591	3678	3852	4004				
Juvenile Dependency (DEP)								
Year-to-Date Filing	853	893	940	848	727	-121	-14.3%	1.4%
Annual Filing	853	893	940	848				
Juvenile Termination (TER)								
Year-to-Date Filing	200	209	325	214	219	+5	+2.3%	0.4%
Annual Filing	200	209	325	214				
Juvenile ARY/CHINS/OTHERS								
Year-to-Date Filing	242	168	285	217	247	+30	+13.8%	4.8%
Annual Filing	242	168	285	217				
Juvenile Truancy								
Year-to-Date Filing	1271	1236	1233	1369	1222	-147	-10.7%	2.4%
Annual Filing	1271	1236	1233	1369				
Juvenile Offender								
Year-to-Date Filing	2249	1808	1802	1649	1295	-354	-21.5%	2.5%
Annual Filing	2249	1808	1802	1649				
Criminal RALJ								
Year-to-Date Filing	192	181	172	180	111	-69	-38.3%	0.2%
Annual Filing	192	181	172	180				
Civil RALJ								
Year-to-Date Filing	63	53	47	57	66	+9	+15.8%	0.1%
Annual Filing	63	53	47	57				
Matters Filed with Clerk ⁽⁴⁾								
Year-to-Date Filing	15046	13763	12240	9581	8742	-839	-8.8%	
Annual Filing	15046	13763	12240	9581				

(1) New filings only (based on filing date), excluding re-opened cases (unable to count), and reflecting all documents received by 01/15/2017.

(2) New filings of each reporting category as percentage of "Year-to-Date Filing".

(3) "Matters Filed with Clerk" and "Additional Filings with Clerk" are not included in the "Total".

Chart 1-A. Quarterly Filing Activity
Total Judicial Cases Only ("Matters Filed with Clerk" excluded)

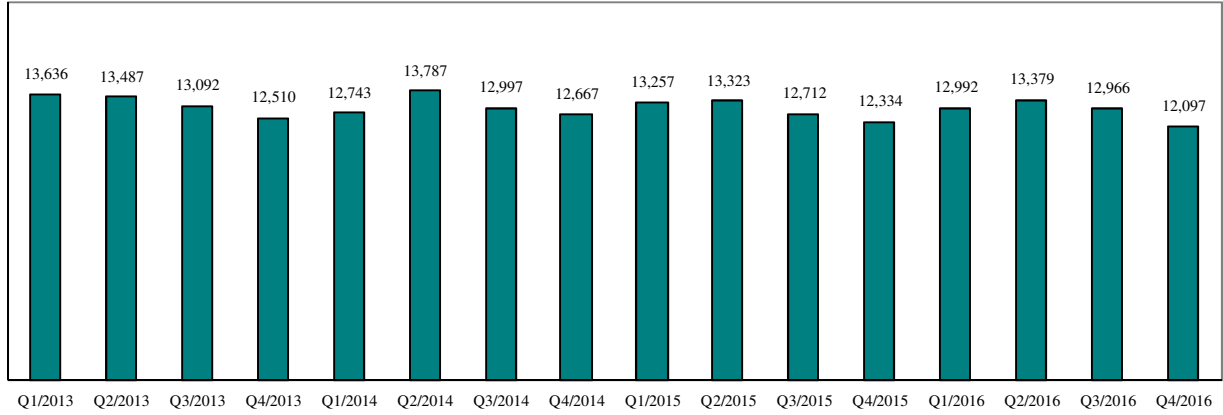
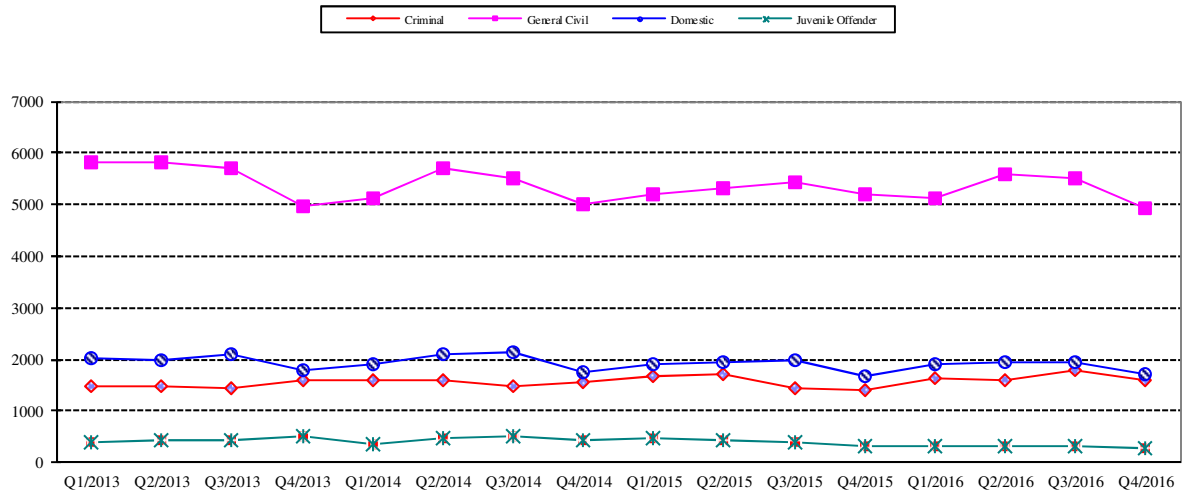


Chart 1-B. Quarterly Filings: Criminal, Domestic, General Civil and Juvenile Offender Cases Only



* Note: "General Civil" is specifically defined in this report. The category of "General Civil" does **not** include the following case types: domestic, probate, guardianship, adoption, paternity, mental illness, juvenile cases (dependency, at-risk youth, child-in-need of service, civil RALJ, and tax filings that don't require judicial resources ("matters filed with clerk")). Please check the Appendix for the cause codes in the "General Civil" category.

Table 1-A. Post-Resolution Modifications (Domestic and Paternity Cases)

Based on Tracks Opened After Original Resolution Date

		2014Q1			2014Q2			2014Q3			2014Q4			Year 2014		
Location	Case Type	DMOD	DTBA	Total	DMOD	DTBA	Total	DMOD	DTBA	Total	DMOD	DTBA	Total	DMOD	DTBA	Total
KNT	Domestic	144	43	187	172	66	238	183	46	229	164	42	206	663	197	860
	Paternity	15	4	19	11	7	18	13	4	17	16	6	22	55	21	76
KNT Total		159	47	206	183	73	256	196	50	246	180	48	228	718	218	936
SEA	Domestic	155	59	214	155	104	259	170	76	246	154	57	211	634	296	930
	Paternity	14	6	20	8	10	18	15	11	26	9	4	13	46	31	77
SEA Total		169	65	234	163	114	277	185	87	272	163	61	224	680	327	1007
KNT/SEA Total		328	112	440	346	187	533	381	137	518	343	109	452	1398	545	1943
		2015Q1			2015Q2			2015Q3			2015Q4			Year 2015		
Location	Case Type	DMOD	DTBA	Total	DMOD	DTBA	Total	DMOD	DTBA	Total	DMOD	DTBA	Total	DMOD	DTBA	Total
KNT	Domestic	166	37	203	188	49	237	168	31	199	166	32	198	688	149	837
	Paternity	14	4	18	18	8	26	15	3	18	8	6	14	55	21	76
KNT Total		180	41	221	206	57	263	183	34	217	174	38	212	743	170	913
SEA	Domestic	150	56	206	145	85	230	171	44	215	146	49	195	612	234	846
	Paternity	8	8	16	8	7	15	7	8	15	5	4	9	28	27	55
SEA Total		158	64	222	153	92	245	178	52	230	151	53	204	640	261	901
KNT/SEA Total		338	105	443	359	149	508	361	86	447	325	91	416	1383	431	1814
		2016Q1			2016Q2			2016Q3			2016Q4			Year 2016		
Location	Case Type	DMOD	DTBA	Total	DMOD	DTBA	Total	DMOD	DTBA	Total	DMOD	DTBA	Total	DMOD	DTBA	Total
KNT	Domestic	174	29	203	167	56	223	204	32	236	179	34	213	724	151	875
	Paternity	16	6	22	12	6	18	12	3	15	8	4	12	48	19	67
KNT Total		190	35	225	179	62	241	216	35	251	187	38	225	772	170	942
SEA	Domestic	154	71	225	154	76	230	173	51	224	133	65	198	614	263	877
	Paternity	6	9	15	11	8	19	14	7	21	14	2	16	45	26	71
SEA Total		160	80	240	165	84	249	187	58	245	147	67	214	659	289	948
KNT/SEA Total		350	115	465	344	146	490	403	93	496	334	105	439	1431	459	1890

* DMOD = parenting plan modification track; DTBA = support modification track.

Table 2. Number of Cases Resolved and Resolution Category (%)

King County Superior Court

Reporting Category	Q1/15	Q2/15	Q3/15	Q4/15	Q1/16	Q2/16	Q3/16	Q4/16*
Total Resolutions (excl. "Matters Filed with Clerk")	13228	15990	13497	13206	13113	13387	13274	12665
Criminal (excl. RALJ): # Resolved	1507	1731	1635	1532	1529	1444	1483	1432
Resolved by Jury Trial	3.6%	2.8%	2.6%	3.3%	4.3%	2.3%	2.5%	2.9%
Resolved by Non-Jury Trial	0.7%	0.2%	0.5%	0.5%	1.1%	1.0%	0.9%	0.1%
Resolved by Guilty Plea	78.0%	80.2%	81.7%	80.6%	80.1%	81.1%	80.3%	80.9%
Dismissal	17.7%	16.7%	14.7%	15.3%	13.8%	15.0%	15.5%	15.0%
Others	0.1%	0.2%	0.4%	0.4%	0.2%	0.6%	0.7%	1.1%
General Civil: # Resolved	5718	5639	5933	5853	5435	5872	5628	5301
Resolved by Jury Trial	0.7%	0.5%	0.5%	0.5%	0.6%	0.4%	0.5%	0.6%
Resolved by Non-Jury Trial	0.2%	0.6%	0.5%	0.3%	0.3%	0.4%	0.5%	0.3%
Summary Judgment	1.5%	2.1%	1.6%	1.8%	2.0%	2.0%	1.6%	1.6%
Default/ Uncontested	40.1%	39.1%	41.0%	42.1%	38.1%	40.2%	40.4%	38.3%
Arbitration	3.0%	3.0%	2.9%	2.7%	3.1%	3.3%	2.7%	3.2%
Settlement/Dismissal	51.1%	51.8%	50.4%	48.3%	52.6%	50.6%	49.4%	51.3%
Closure by Clerk	2.4%	2.1%	2.2%	3.6%	2.6%	2.5%	4.3%	3.4%
Others	0.9%	0.9%	0.8%	0.7%	0.8%	0.7%	0.8%	1.3%
Asbestos Cases (civil): # Resolved	25	9	12	10	9	14	8	16
Resolved by Jury Trial	0.0%	0.0%	0.0%	0.0%	11.1%	0.0%	12.5%	0.0%
Resolved by Non-Jury Trial	0.0%	0.0%	0.0%	0.0%	0.0%	0.0%	0.0%	0.0%
Summary Judgment	4.0%	0.0%	0.0%	50.0%	22.2%	0.0%	0.0%	0.0%
Default/ Uncontested	0.0%	11.1%	8.3%	0.0%	0.0%	7.1%	12.5%	6.3%
Arbitration	0.0%	0.0%	0.0%	0.0%	0.0%	0.0%	0.0%	0.0%
Settlement/Dismissal	64.0%	55.6%	66.7%	20.0%	55.6%	85.7%	62.5%	87.5%
Closure by Clerk	28.0%	33.3%	25.0%	30.0%	11.1%	7.1%	12.5%	6.3%
Others	4.0%	0.0%	0.0%	0.0%	0.0%	0.0%	0.0%	0.0%
Domestic: # Resolved	1915	2031	1959	2019	1810	1895	1881	1924
Resolved by Trial	3.9%	5.4%	5.2%	4.4%	4.0%	4.6%	4.8%	3.7%
Default/ Uncontested	11.3%	10.5%	10.0%	10.3%	10.1%	9.8%	10.2%	8.5%
Settlement /Dismissal	84.2%	83.4%	83.6%	84.5%	84.5%	84.3%	84.2%	86.6%
Closure by Clerk	0.3%	0.5%	0.5%	0.6%	0.8%	0.6%	0.4%	0.4%
Others	0.4%	0.2%	0.8%	0.3%	0.6%	0.6%	0.5%	0.7%
Probate: # Resolved	1575	1507	1431	1397	1561	1549	1473	1387
Personal Rep. Appointed	72.1%	72.3%	72.6%	72.8%	72.7%	72.3%	71.6%	70.7%
Dismissal	1.9%	2.7%	3.6%	4.3%	2.6%	2.8%	3.7%	2.7%
Closure by Clerk	0.0%	0.0%	0.0%	0.6%	0.1%	0.0%	0.0%	0.0%
Others	26.0%	25.0%	23.8%	22.3%	24.6%	24.9%	24.7%	26.6%
Guardianship: # Resolved	204	235	228	228	220	258	265	231
Guardian Appointed	56.4%	51.1%	54.4%	54.8%	55.5%	55.8%	47.6%	56.3%
Dismissal	43.6%	46.8%	43.9%	44.7%	43.2%	43.0%	51.7%	42.4%
Closure by Clerk	0.0%	0.0%	0.0%	0.0%	0.0%	0.0%	0.0%	0.0%
Others	0.0%	2.1%	1.8%	0.4%	1.4%	1.2%	0.8%	1.3%
Adoption: # Resolved	97	130	106	131	116	113	104	140
Resolved by Trial	0.0%	0.0%	0.0%	0.8%	0.0%	0.9%	0.0%	0.0%
Uncontested	11.3%	2.3%	7.6%	3.1%	9.5%	6.2%	3.9%	2.1%
Settlement /Dismissal	87.6%	97.7%	91.5%	93.9%	90.5%	92.9%	96.2%	97.9%
Closure by Clerk	0.0%	0.0%	0.0%	0.8%	0.0%	0.0%	0.0%	0.0%
Others	1.0%	0.0%	0.9%	1.5%	0.0%	0.0%	0.0%	0.0%
Paternity: # Resolved	154	161	176	153	171	140	141	121
Resolved by Trial	2.6%	3.1%	4.6%	0.0%	1.2%	2.1%	1.4%	1.7%
Summary Judgment	39.6%	41.0%	48.9%	45.8%	52.1%	39.3%	52.5%	43.8%
Default/ Uncontested	22.7%	25.5%	19.3%	24.2%	17.0%	25.7%	17.7%	20.7%
Settlement/Dismissal	35.1%	29.8%	27.3%	29.4%	29.8%	32.9%	27.7%	33.9%
Closure by Clerk	0.0%	0.0%	0.0%	0.0%	0.0%	0.0%	0.0%	0.0%
Others	0.0%	0.6%	0.0%	0.7%	0.0%	0.0%	0.7%	0.0%

Reflecting all documents received by 01/15/2017.

Table 2 (cont.). Number of Cases Resolved and Resolution Category (%)

King County Superior Court

Reporting Category	Q1/15	Q2/15	Q3/15	Q4/15	Q1/16	Q2/16	Q3/16	Q4/16*
Mental Illness: # Resolved	922	1005	1128	957	1014	1034	1085	1045
Court Decision to Commit	67.7%	62.9%	63.4%	60.4%	64.2%	65.3%	63.0%	59.3%
Closed by Court	0.0%	0.0%	0.0%	0.0%	0.0%	0.0%	0.0%	0.0%
Dismissal	19.6%	19.7%	18.2%	19.8%	20.6%	21.3%	16.7%	26.1%
Others	12.7%	17.4%	18.4%	19.9%	15.2%	13.4%	20.3%	14.6%
Juv. Dependency: # Resolved	196	208	153	159	172	187	397	140
Finding of Dependency	70.9%	76.0%	67.3%	80.5%	72.9%	81.8%	87.4%	77.9%
Dismissal	27.6%	23.6%	32.0%	19.5%	26.7%	18.2%	12.3%	22.1%
Others	1.5%	0.5%	0.7%	0.0%	1.2%	0.0%	0.3%	0.0%
Juv. Terminations: # Resolved	74	50	49	61	62	48	103	49
Finding of Dependency	94.6%	88.0%	77.6%	77.0%	74.2%	79.2%	95.2%	81.6%
Dismissal	5.4%	12.0%	22.4%	23.0%	25.8%	20.8%	4.8%	18.4%
Others	0.0%	0.0%	0.0%	0.0%	0.0%	0.0%	0.0%	0.0%
Juv. ARY/CHINS/OTHER:# Resolved	56	66	61	36	63	45	93	70
Approve of Petition	51.8%	53.0%	39.3%	52.8%	38.1%	28.9%	55.9%	62.8%
Dismissal	46.4%	47.0%	60.7%	47.2%	61.9%	71.1%	44.1%	37.2%
Others	1.8%	0.0%	0.0%	0.0%	0.0%	0.0%	0.0%	0.0%
Juvenile Truancy: # Resolved	270	288	124	264	524	324	151	387
Approve of Petition	45.6%	37.2%	0.8%	1.9%	5.0%	0.6%	7.3%	23.5%
Dismissal	54.4%	62.9%	99.2%	98.1%	95.0%	99.4%	92.7%	76.5%
Others	0.0%	0.0%	0.0%	0.0%	0.0%	0.0%	0.0%	0.0%
Juvenile Offender: # Resolved	456	418	451	363	364	413	398	373
Resolved by Trial (Fact Finding)	6.6%	4.1%	3.8%	1.1%	1.4%	4.6%	1.0%	3.5%
Resolved by Guilty Plea	32.5%	35.4%	28.4%	34.7%	37.4%	36.3%	34.4%	33.0%
Dismissal	44.5%	41.6%	43.7%	46.3%	40.9%	43.1%	43.2%	40.5%
Deferred Disposition (DDSP)	12.9%	15.3%	17.3%	13.2%	15.1%	12.6%	15.8%	17.4%
Others (including Deferred Prosecution)	3.5%	3.6%	6.9%	4.7%	5.2%	3.4%	5.5%	5.6%
Criminal RALJ: # Resolved	45	55	39	35	48	39	40	33
RALJ Decision	71.1%	69.1%	56.4%	54.3%	58.3%	79.5%	82.5%	66.7%
Dismissal	26.7%	29.1%	35.9%	45.7%	35.4%	10.3%	10.0%	15.2%
Others	2.2%	1.8%	7.7%	0.0%	6.3%	10.3%	7.5%	18.2%
Civil RALJ: # Resolved	14	18	12	8	15	12	24	16
RALJ Decision	35.7%	27.8%	16.7%	12.5%	46.7%	50.0%	37.5%	50.0%
Dismissal	50.0%	55.6%	83.3%	62.5%	46.7%	41.7%	25.0%	18.8%
Others	14.3%	16.7%	0.0%	25.0%	6.7%	8.3%	37.5%	31.3%

* Reflecting all documents received by 01/15/2017.

Chart 2-A. Quarterly Resolutions
Total Judicial Cases Only ("Matters Filed with Clerk" excluded)

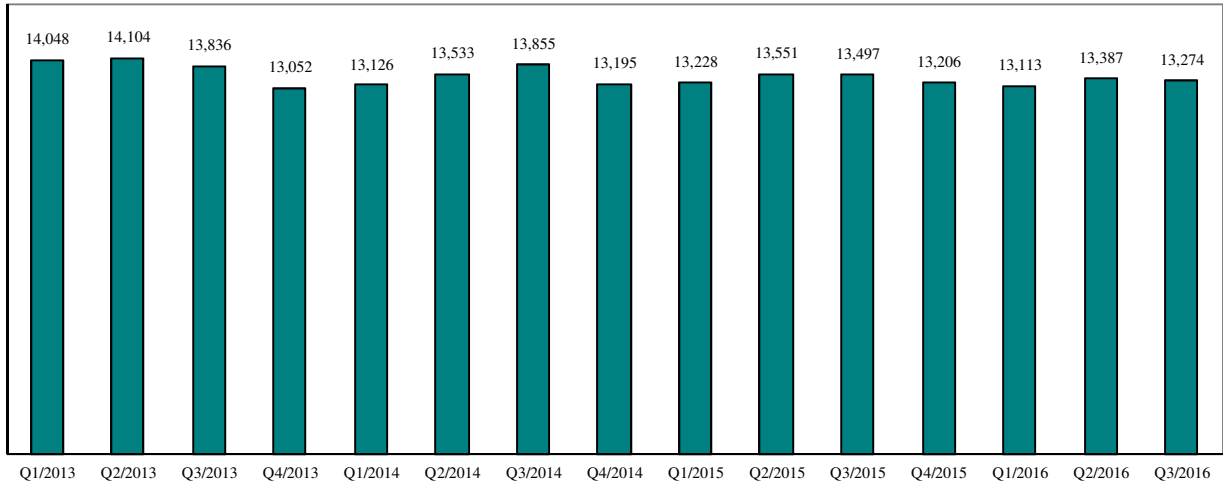
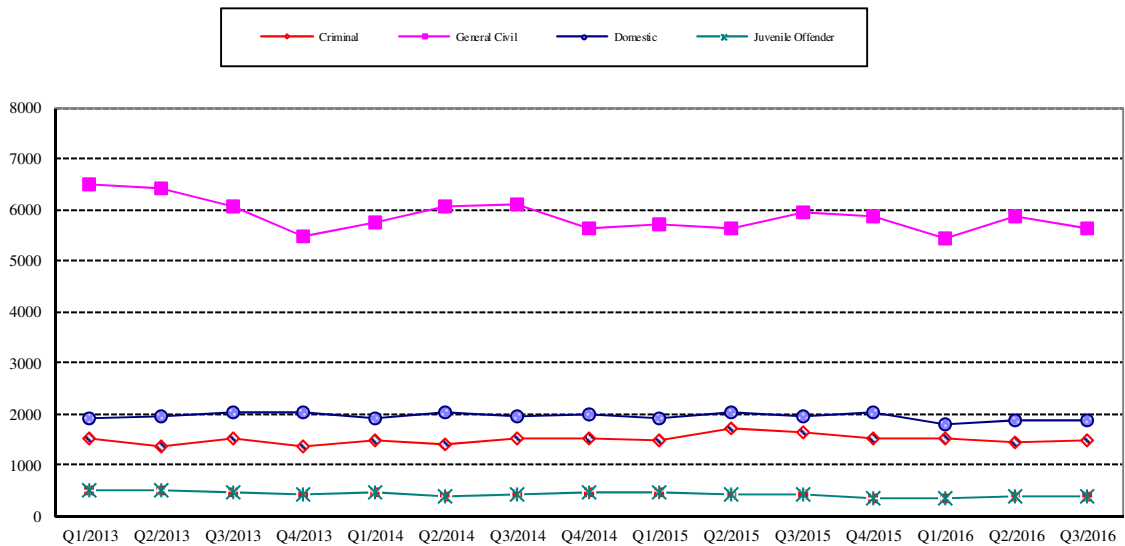


Chart 2-B. Quarterly Resolutions: Criminal, Dmestic, General Civil and Juvenile Offender Cases Only



* Note: "General Civil" is specifically defined in this report. The category of "General Civil" does **not** include the following case types: domestic, probate, guardianship, adoption, paternity, mental illness, juvenile cases (dependency, at-risk youth, child-in-need of service), civil RALJ, and tax filings that don't require judicial resources ("matters filed with clerk"). Please check the Appendix for the cause codes in the "General Civil" category.

Table 3. Age of Resolved Cases
King County Superior Court

Reporting Category	Age of Cases at Resolution							
	Q1/15	Q2/15	Q3/15	Q4/15	Q1/16	Q2/16	Q3/16	Q4/16*
Criminal (excl. RALJ)								
Age (days)								
50% Cases Resolved by Day	124	105	112	113	120	111	108	112
90% Cases Resolved by Day	366	343	326	306	364	346	328	317
Comparison with Court Standard of								
90% in 4 months	49%	56%	53%	53%	50%	54%	56%	53%
98% in 6 months	67%	72%	72%	73%	69%	71%	74%	71%
100% in 9 months	82%	86%	85%	88%	84%	86%	86%	87%
General Civil ⁽¹⁾								
Age (days)								
50% Cases Resolved by Day	30	36	31	35	38	33	28	42
90% Cases Resolved by Day	425	413	407	398	388	368	357	357
Comparison with Court Standard of								
90% in 12 months	84%	85%	85%	88%	86%	89%	92%	89%
98% in 18 months	96%	94%	95%	97%	96%	97%	98%	97%
100% in 24 months	99%	99%	98%	99%	99%	99%	99%	99%
Domestic								
Age (days)								
50% Cases Resolved by Day	171	175	161	149	176	172	147	154
90% Cases Resolved by Day	357	365	368	372	378	372	371	368
Comparison with Court Standard of								
90% in 8 months	66%	60%	64%	66%	61%	61%	66%	65%
98% in 10 months	76%	72%	75%	76%	73%	75%	78%	78%
100% in 14 months	95%	95%	94%	93%	92%	94%	94%	94%
Probate								
Age (days)								
50% Cases Resolved by Day	0	0	0	0	0	0	0	0
90% Cases Resolved by Day	7	13	19	19	12	13	24	8
Comparison with Court Standard of								
90% in 8 months	99%	98%	97%	97%	97%	97%	98%	96%
98% in 18 months	100%	100%	99%	99%	100%	99%	99%	99%
100% in 36 months	100%	100%	100%	100%	100%	100%	100%	100%
Guardianship								
Age (days)								
50% Cases Resolved by Day	65	65	71	62	70	68	71	65
90% Cases Resolved by Day	237	242	211	193	162	240	273	208
Comparison with Court Standard of								
90% in 8 months	89%	89%	91%	92%	96%	91%	85%	94%
98% in 18 months	97%	99%	98%	99%	100%	99%	98%	100%
100% in 36 months	99%	100%	100%	100%	100%	100%	100%	100%
Adoption								
Age (days)								
50% Cases Resolved by Day	79	70	42	55	62	66	99	69
90% Cases Resolved by Day	504	414	298	211	499	444	714	257
Comparison with Court Standard of								
90% in 8 months	81%	84%	90%	89%	80%	86%	68%	87%
98% in 10 months	84%	87%	93%	91%	84%	86%	79%	94%
100% in 14 months	88%	91%	95%	94%	89%	85%	81%	99%
Paternity								
Age (days)								
50% Cases Resolved by Day	141	139	135	139	164	142	172	154
90% Cases Resolved by Day	309	303	307	272	306	307	296	367
Comparison with Court Standard of								
90% in 8 months	78%	76%	76%	84%	73%	79%	71%	71%
98% in 10 months	87%	89%	90%	94%	88%	89%	92%	82%
100% in 14 months	96%	96%	98%	98%	97%	98%	97%	96%

Table 3 (cont.) Age of Resolved Cases

King County Superior Court

Reporting Category	Age of Cases at Resolution							
	Q1/15	Q2/15	Q3/15	Q4/15	Q1/16	Q2/16	Q3/16	Q4/16*
Mental Illness**								
Age (days)								
50% Cases Resolved by Day	3	4	4	4	3	4	4	4
90% Cases Resolved by Day	12	14	18	21	15	12	15	13
Juvenile Dependency (DEP)								
Age (days)								
50% Cases Resolved by Day	111	121	89	125	85	104	278	132
90% Cases Resolved by Day	312	250	217	221	218	230	570	283
Comparison with Court Standard of								
90% in 8 months	85%	90%	90%	94%	92%	93%	46%	85%
98% in 10 months	91%	95%	92%	95%	97%	96%	60%	90%
100% in 14 months	98%	99%	94%	98%	99%	96%	77%	96%
Juvenile Termination (TER)								
Age (days)								
50% Cases Resolved by Day	138	182	154	106	163	259	272	182
90% Cases Resolved by Day	263	282	382	350	406	665	680	679
Comparison with Court Standard of								
90% in 8 months	83%	80%	73%	81%	68%	45%	45%	63%
98% in 10 months	94%	94%	89%	84%	81%	61%	61%	68%
100% in 14 months	99%	96%	94%	97%	92%	69%	73%	72%
Juv ARY/CHINS/OTHER								
Age (days)								
50% Cases Resolved by Day	80	37	103	35	55	53	208	60
90% Cases Resolved by Day	622	139	304	288	294	230	730	338
Comparison with Court Standard of								
90% in 8 months	87%	94%	73%	90%	86%	96%	58%	86%
98% in 10 months	89%	96%	88%	93%	91%	98%	62%	86%
100% in 14 months	89%	98%	97%	97%	94%	100%	74%	93%
Juvenile Truancy**								
Age (days)								
50% Cases Resolved by Day	128	133	182	269	341	371	483	320
90% Cases Resolved by Day	750	357	646	394	493	514	591	608
Juvenile Offender								
Age (days)								
50% Cases Resolved by Day	98	89	92	88	99	112	90	93
90% Cases Resolved by Day	267	257	273	257	235	340	309	340
Comparison with Court Standard of								
90% in 4 months	61%	66%	63%	66%	60%	53%	60%	61%
98% in 6 months	78%	83%	79%	79%	79%	73%	79%	75%
100% in 9 months	91%	91%	90%	91%	95%	87%	87%	87%
Criminal RALJ								
Age (days)								
50% Cases Resolved by Day	296	251	258	260	247	269	292	273
90% Cases Resolved by Day	725	456	438	421	636	510	449	497
Civil RALJ								
Age (days)								
50% Cases Resolved by Day	180	167	165	170	165	172	165	151
90% Cases Resolved by Day	272	216	336	249	280	225	227	326

* Reflecting all documents received by 01/15/2017.

** No standard yet.

Table 4. Active Pending Caseload Statistics

King County Superior Court

Reporting Category	Q1/15	Q2/15	Q3/15	Q4/15	Q1/16	Q2/16	Q3/16	Q4/16*
Total (incl. RALJ)								
Previous Pending (+)	18811	18603	18623	18333	17886	18216	18216	18678
New Filing (+)	13257	13323	12712	12334	12992	13373	12966	12097
Resolved (-)	13228	13551	13497	13206	13113	13387	13274	12665
End Pending	18630	18623	18333	17886	18216	18663	18678	19119
Resolution Rate**	0.998	1.017	1.062	1.071	1.009	1.001	1.020	1.047
Criminal (excl. RALJ)								
Previous Pending (+)	2866	2908	2882	2727	2619	2725	2849	3050
New Filing (+)	1682	1711	1446	1395	1647	1594	1780	1610
Resolved (-)	1507	1731	1635	1532	1529	1444	1483	1432
End Pending	2908	2882	2727	2619	2725	2849	3050	3193
Resolution Rate**	0.896	1.012	1.131	1.098	0.928	0.906	0.833	0.889
General Civil								
Previous Pending (+)	7079	7215	7036	6851	6691	6686	6803	7044
New Filing (+)	5213	5308	5448	5210	5110	5602	5531	4931
Resolved (-)	5718	5639	5933	5853	5435	5872	5628	5301
End Pending	7215	7036	6851	6691	6686	6803	7044	7752
Resolution Rate**	1.097	1.062	1.089	1.123	1.064	1.048	1.018	1.075
Asbestos Cases (civil) ⁽¹⁾								
Previous Pending (+)	69	57	54	60	56	55	50	58
New Filing (+)	9	6	18	2	8	9	18	6
Resolved (-)	25	8	12	10	9	14	8	16
End Pending	57	54	60	56	55	50	58	46
Resolution Rate**	2.778	1.333	0.667	5.000	1.125	1.556	0.444	2.667
Domestic								
Previous Pending (+)	4579	4520	4497	4562	4234	4336	4416	4465
New Filing (+)	1904	1964	1997	1694	1897	1942	1947	1720
Resolved (-)	1203	2031	1959	2019	1810	1895	1881	1924
End Pending	4520	4497	4562	4234	4336	4416	4465	4337
Resolution Rate**	1.006	1.034	0.981	1.192	0.954	0.976	0.966	1.119
Probate								
Previous Pending (+)	908	511	562	581	580	624	703	715
New Filing (+)	1652	1527	1422	1419	1586	1600	1454	1425
Resolved (-)	1575	1507	1431	1397	1561	1549	1473	1387
End Pending	511	562	581	580	624	703	715	684
Resolution Rate**	0.953	0.987	1.006	0.984	0.984	0.968	1.013	0.973
Guardianship								
Previous Pending (+)	301	274	283	305	311	336	341	337
New Filing (+)	221	245	251	253	245	263	257	247
Resolved (-)	204	235	228	228	220	258	265	231
End Pending	274	283	305	311	336	341	337	329
Resolution Rate**	0.923	0.959	0.908	0.901	0.898	0.981	1.031	0.935
Adoption								
Previous Pending (+)	149	163	154	163	147	163	166	163
New Filing (+)	112	119	114	114	130	116	101	111
Resolved (-)	97	130	106	131	116	113	104	140
End Pending	163	154	163	147	163	166	163	135
Resolution Rate**	0.866	1.092	0.930	1.149	0.892	0.974	1.030	1.261
Paternity								
Previous Pending (+)	300	282	316	293	310	278	261	232
New Filing (+)	146	191	149	163	139	133	108	148
Resolved (-)	154	161	176	153	171	140	141	121
End Pending	282	316	293	310	278	261	232	253
Resolution Rate**	1.055	0.843	1.181	0.939	1.230	1.053	1.306	0.818

* Reflecting all documents received by 01/15/2017.

** A value of "Resolution Rate" less than one indicates the resolution pace is slower than the filing pace.

Table 4 (cont.) Active Pending Caseload Statistics
King County Superior Court

Reporting Category	Q1/15	Q2/15	Q3/15	Q4/15	Q1/16	Q2/16	Q3/16	Q4/16*
Mental Illness								
Previous Pending (+)	121	143	162	122	90	95	118	82
New Filing (+)	962	1024	1085	935	1020	1056	1048	1028
Resolved (-)	922	1005	1128	957	1014	1034	1085	1045
End Pending	143	162	122	90	95	118	82	60
Resolution Rate**	0.958	0.981	1.040	1.024	0.994	0.979	1.035	1.017
Juvenile Dependency (DEP)								
Previous Pending (+)	414	325	333	394	474	506	504	289
New Filing (+)	171	222	205	259	210	188	175	162
Resolved (-)	196	208	153	159	172	187	397	140
End Pending	325	333	394	474	506	504	289	300
Resolution Rate**	1.146	0.937	0.746	0.614	0.819	0.995	2.269	0.864
Juvenile Termination (TER)								
Previous Pending (+)	225	175	169	194	164	148	181	128
New Filing (+)	43	47	73	51	44	82	41	52
Resolved (-)	74	50	49	61	62	48	103	49
End Pending	175	169	194	164	148	181	128	128
Resolution Rate**	1.721	1.064	0.671	1.196	1.409	0.585	2.512	0.942
Juv ARY/CHINS/OTHERS								
Previous Pending (+)	119	91	89	87	111	118	136	98
New Filing (+)	48	61	41	56	63	64	51	61
Resolved (-)	56	66	61	36	63	45	93	70
End Pending	91	89	87	111	118	136	98	86
Resolution Rate**	1.167	1.082	1.488	0.642	1.000	0.703	1.824	1.148
Juvenile Truancy								
Previous Pending (+)	821	1153	1271	1202	1329	1397	1430	1374
New Filing (+)	573	388	14	391	532	347	93	250
Resolved (-)	270	288	124	264	524	328	151	387
End Pending	1153	1271	1202	1329	1397	1430	1374	1237
Resolution Rate**	1.471	0.742	8.857	0.675	0.985	0.934	1.624	1.548
Juvenile Offender								
Previous Pending (+)	677	646	651	614	581	571	538	504
New Filing (+)	473	443	384	337	307	337	328	298
Resolved (-)	456	418	451	363	364	413	398	373
End Pending	646	651	614	581	571	538	504	441
Resolution Rate**	0.964	0.944	1.174	1.077	1.186	1.226	1.213	1.252
Criminal RALJ								
Previous Pending (+)	155	140	138	154	156	146	131	107
New Filing (+)	34	51	55	40	40	24	14	33
Resolved (-)	45	55	39	35	48	39	40	33
End Pending	140	138	154	156	146	131	107	107
Resolution Rate**	1.324	1.078	0.709	0.875	1.200	1.625	2.857	1.000
Civil RALJ								
Previous Pending (+)	28	27	26	24	33	32	36	32
New Filing (+)	14	16	10	15	14	16	20	15
Resolved (-)	14	18	12	8	15	12	24	16
End Pending	27	26	24	33	32	36	32	31
Resolution Rate**	1.000	1.125	1.200	0.533	1.071	0.750	1.200	1.067

* Reflecting all documents received by 01/15/2017.

** A value of "Resolution Rate" less than one indicates the resolution pace is slower than the filing pace.

Chart 4-A. Active Pending Caseload at Quarter End
Total Judicial Cases Only ("Matters Filed with Clerk" excluded)

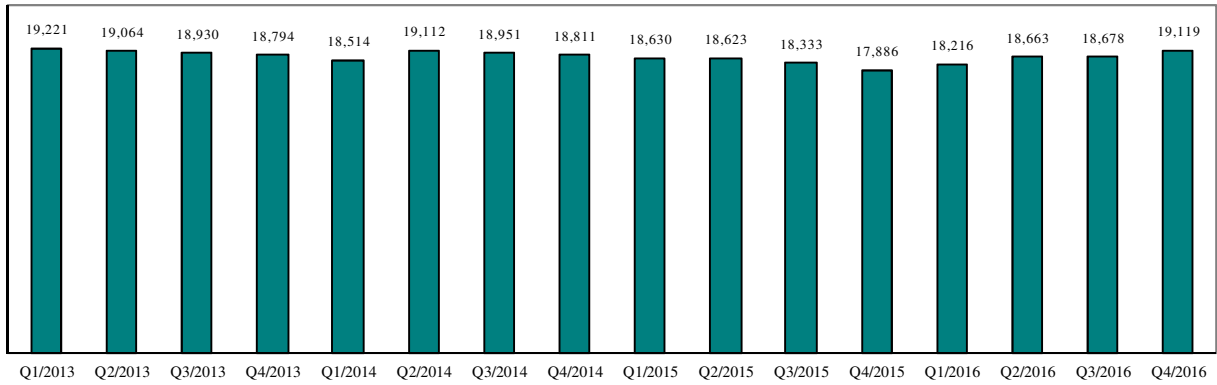


Chart 4-B. Active Pending Caseload at Quarter End: Domestic and General Civil Cases Only

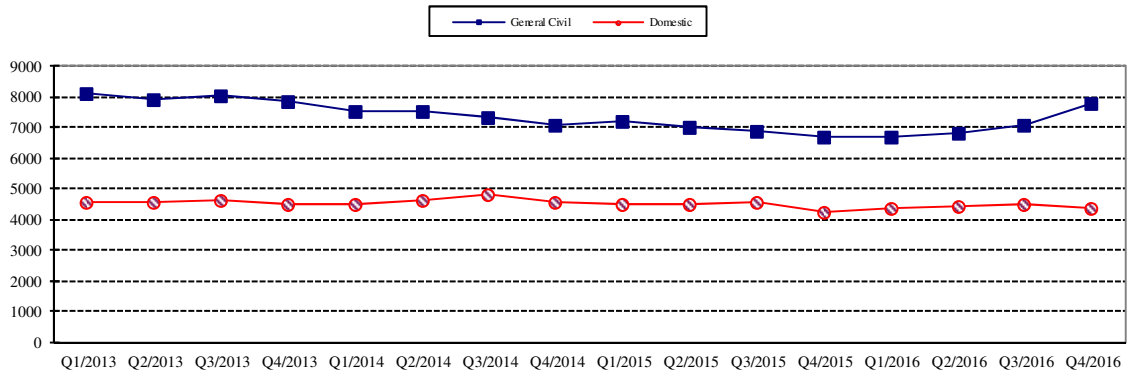
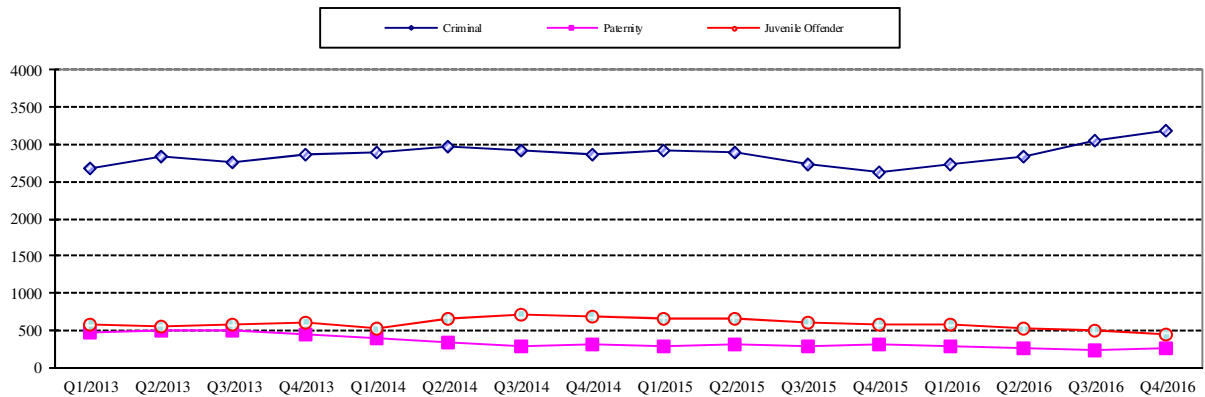


Chart 4-C. Active Pending Caseload at Quarter End:
Criminal, Juvenile Offender, Paternity and Dependency Cases Only



* Note: "General Civil" is specifically defined in this report. The category of "General Civil" does **not** include the following case types: domestic, probate, guardianship, adoption, paternity, mental illness, juvenile cases (dependency, at-risk youth, child-in-need of service), civil RALJ, and tax filings that don't require judicial resources ("matters filed with clerk"). Please check the Appendix for the cause codes in the "General Civil" category.

Table 5. Age of Pending Cases

King County Superior Court

Reporting Category	Age of Pending Cases and # of Cases in Each Age Interval							
	Q1/15	Q2/15	Q3/15	Q4/15	Q1/16	Q2/16	Q3/16	Q4/16*
Criminal (excl. RALJ): # of Cases	2908	2882	2727	2619	2825	2849	3050	3193
Age (days)								
Median (50 percentile)	96	97	106	110	95	99	101	111
95 percentile	525	549	572	610	395	541	542	564
# of Cases in Age Interval								
0 - 60 days (0 - 2 months)	1072	993	929	808	1020	997	1046	964
61 - 120 days (3 - 4 months)	627	689	572	586	547	671	629	709
121 - 180 days (5 - 6 months)	362	379	406	357	348	390	442	511
181 - 270 days (7 - 9 months)	308	321	331	337	306	292	389	387
> 270 days (> 9 months)	539	500	489	531	504	494	544	622
General Civil: # of Cases	7215	7036	6851	6691	6686	6803	7044	7752
Age (days)								
Median (50 percentile)	160	133	134	143	134	126	131	149
95 percentile	547	518	524	536	395	491	501	514
# of Cases in Age Interval								
0 - 120 days (0 - 4 months)	2959	3299	3184	2942	3127	3302	3306	3270
121 - 240 days (5 - 8 months)	1793	1534	1675	1688	1643	1704	1885	2095
241 - 360 days (9 - 12 months)	1299	1115	965	1144	1063	997	1031	1374
361 - 540 days (13 - 18 months)	789	775	726	590	567	556	531	669
541 - 720 days (19 - 24 months)	231	183	183	185	146	129	180	190
> 720 days (> 24 months)	144	130	118	142	140	115	111	154
Asbestos Cases (civil) ⁽¹⁾ : # of Cases	57	54	60	56	55	50	58	46
Age (days)								
Median (50 percentile)	253	329	271	332	304	353	339	235
95 percentile	1002	1093	1002	791	690	847	939	1013
# of Cases in Age Interval								
0 - 120 days (0 - 4 months)	13	9	18	6	9	10	17	8
121 - 240 days (5 - 8 months)	11	9	9	17	5	5	9	17
241 - 360 days (9 - 12 months)	10	16	10	8	16	15	3	8
361 - 540 days (13 - 18 months)	10	9	16	16	11	9	17	4
541 - 720 days (19 - 24 months)	5	4	3	5	9	4	4	6
> 720 days (> 24 months)	8	7	4	4	5	7	8	3
Domestic: # of Cases	4520	4497	4562	4234	4336	4416	4465	4337
Age (days)								
Median (50 percentile)	126	117	115	128	120	114	116	129
95 percentile	538	559	563	623	359	601	559	691
# of Cases in Age Interval								
0 - 120 days (0 - 4 months)	2229	2322	2347	2020	2187	2307	2272	2041
121 - 240 days (5 - 8 months)	1206	1113	1228	1175	1133	1088	1185	1155
241 - 360 days (9 - 12 months)	661	643	529	604	589	571	551	641
361 - 540 days (13 - 18 months)	200	186	221	196	177	202	226	227
> 540 days (> 18 months)	224	233	237	239	250	248	231	273
Probate: # of Cases	511	562	581	580	624	703	715	684
Age (days)								
Median (50 percentile)	680	272	276	297	332	338	393	377
95 percentile	869	847	932	1084	1025	1192	1277	1362
# of Cases in Age Interval								
0 - 120 days (0 - 4 months)	172	165	139	149	161	181	160	150
121 - 240 days (5 - 8 months)	89	99	124	103	86	104	118	109
241 - 360 days (9 - 12 months)	72	77	59	86	81	82	72	81
361 - 540 days (13 - 18 months)	69	83	93	67	85	107	86	68
> 540 days (> 18 months)	109	138	166	175	211	229	279	276

Reflecting all documents received by 01/15/2017.

Table 5 (cont.). Age of Pending Cases

King County Superior Court

Reporting Category	Age of Pending Cases and # of Cases in Each Age Interval							
	Q1/15	Q2/15	Q3/15	Q4/15	Q1/16	Q2/16	Q3/16	Q4/16*
Guardianship: # of Cases	274	283	305	311	336	341	337	329
Age (days)								
Median (50 percentile)	64	71	65	70	67	78	81	83
95 percentile	544	520	541	409	364	456	506	510
# of Cases in Age Interval								
0 - 120 days (0 - 4 months)	175	196	198	215	222	217	214	189
121 - 240 days (5 - 8 months)	42	35	56	45	48	60	54	74
241 - 360 days (9 - 12 months)	24	17	18	31	32	27	35	28
361 - 540 days (13 - 18 months)	18	21	17	11	24	28	19	23
> 540 days (> 18 months)	15	14	16	9	10	9	15	15
Adoption: # of Cases	163	154	163	147	163	166	163	135
Age (days)								
Median (50 percentile)	110	106	133	155	101	112	106	116
95 percentile	848	939	938	1123	515	735	492	600
# of Cases in Age Interval								
0 - 120 days (0 - 4 months)	86	83	76	67	93	85	91	68
121 - 240 days (5 - 8 months)	31	27	40	24	21	37	34	31
241 - 360 days (9 - 12 months)	14	15	16	23	17	15	22	14
361 - 540 days (13 - 18 months)	16	16	12	13	17	13	11	14
> 540 days (> 18 months)	16	13	19	20	15	16	5	8
Paternity: # of Cases	282	316	293	310	278	261	232	253
Age (days)								
Median (50 percentile)	105	84	99	102	102	105	117	89
95 percentile	285	301	301	301	256	345	403	324
# of Cases in Age Interval								
0 - 120 days (0 - 4 months)	171	211	179	173	157	143	122	149
121 - 240 days (5 - 8 months)	85	76	89	95	86	77	71	70
241 - 360 days (9 - 12 months)	17	25	17	32	27	31	22	23
361 - 540 days (13 - 18 months)	7	4	8	10	7	8	14	9
> 540 days (> 18 months)	2	0	0	0	1	2	3	2
Mental Illness: # of Cases	143	162	122	90	95	118	82	60
Age (days)								
Median (50 percentile)	33	21	23	10	9	25	5	12
95 percentile	805	896	686	168	182	350	442	545
# of Cases in Age Interval								
0 - 120 days (0 - 4 months)	92	109	106	76	85	100	70	47
121 - 240 days (5 - 8 months)	9	16	4	11	3	8	0	6
> 240 days (> 8 months)	42	37	12	3	7	10	12	7
Juv Dependency (DEP): # of Cases	325	333	394	474	506	504	289	300
Age (days)								
Median (50 percentile)	99	76	106	90	137	170	82	89
95 percentile	386	432	517	562	455	690	382	376
# of Cases in Age Interval								
0 - 60 days (0 - 2 months)	119	125	122	180	131	114	119	125
61 - 120 days (3 - 4 months)	78	98	99	110	105	72	71	71
121 - 180 days (5 - 6 months)	53	32	65	49	82	78	42	51
181 - 270 days (7 - 9 months)	25	28	35	56	71	79	23	28
> 270 days (> 9 months)	50	50	73	79	117	161	34	25
Juv Termination (TER): # of Cases	175	169	194	164	148	181	128	128
Age (days)								
Median (50 percentile)	132	189	188	175	214	156	152	177
95 percentile	404	460	504	539	589	680	645	527
# of Cases in Age Interval								
0 - 60 days (0 - 2 months)	20	40	49	27	21	48	23	20
61 - 120 days (3 - 4 months)	48	11	36	27	19	33	29	34
121 - 180 days (5 - 6 months)	53	26	11	31	17	17	25	14
181 - 270 days (7 - 9 months)	31	49	24	20	35	21	14	30
> 270 days (> 9 months)	23	43	74	59	56	62	37	30

* Reflecting all documents received by 01/15/2017.

Table 5 (cont.). Age of Pending Cases

King County Superior Court

Reporting Category	Age of Pending Cases and # of Cases in Each Age Interval							
	Q1/15	Q2/15	Q3/15	Q4/15	Q1/16	Q2/16	Q3/16	Q4/16*
Juv. ARY/CHINS/OTHER: # of Cases	91	89	87	111	118	136	98	86
Age (days)								
Median (50 percentile)	170	261	353	207	218	225	169	149
95 percentile	3264	3355	3390	3482	2850	3630	3813	3905
# of Cases in Age Interval								
0 - 60 days (0 - 2 months)	28	22	20	23	26	37	25	23
61 - 120 days (3 - 4 months)	7	8	7	20	14	16	14	13
121 - 180 days (5 - 6 months)	11	4	9	11	14	10	16	14
181 - 270 days (7 - 9 months)	6	12	3	7	14	13	6	6
> 270 days (> 9 months)	39	43	48	50	50	60	37	30
Juvenile Truancy: # of Cases	1153	1271	1202	1329	1397	1430	1374	1237
Age (days)								
Median (50 percentile)	93	134	222	274	143	158	236	290
95 percentile	1064	1148	1245	1324	470	899	1017	1334
# of Cases in Age Interval								
0 - 60 days (0 - 2 months)	447	179	6	277	380	177	74	173
61 - 120 days (3 - 4 months)	255	392	33	115	216	335	47	78
121 - 180 days (5 - 6 months)	216	266	279	9	242	281	296	85
181 - 270 days (7 - 9 months)	13	256	485	253	11	261	430	228
> 270 days (> 9 months)	222	178	399	675	548	376	527	673
Juvenile Offender: # of Cases	646	651	614	581	571	538	504	441
Age (days)								
Median (50 percentile)	76	90	97	120	118	98	92	98
95 percentile	418	439	449	507	435	596	689	628
# of Cases in Age Interval								
0 - 60 days (0 - 2 months)	268	239	216	162	177	201	176	142
61 - 120 days (3 - 4 months)	169	163	145	129	113	99	109	106
121 - 180 days (5 - 6 months)	73	87	93	93	71	63	65	66
181 - 270 days (7 - 9 months)	51	75	77	87	75	44	44	45
> 270 days (> 9 months)	85	87	83	110	135	131	110	82
Criminal RALJ: # of Cases	140	138	154	156	146	131	107	107
Age (days)								
Median (50 percentile)	158	133	136	171	169	198	227	208
95 percentile	451	506	581	673	364	506	656	639
# of Cases in Age Interval								
0 - 60 days (0 - 2 months)	31	35	34	28	27	16	8	17
61 - 120 days (3 - 4 months)	20	28	32	20	23	21	17	16
121 - 180 days (5 - 6 months)	29	17	33	40	24	21	10	11
181 - 270 days (7 - 9 months)	31	30	25	42	37	27	27	20
> 270 days (> 9 months)	29	28	30	26	35	46	45	43
Civil RALJ: # of Cases	27	26	24	33	32	36	32	31
Age (days)								
Median (50 percentile)	105	101	110	93	106	108	84	96
95 percentile	279	301	248	304	339	476	522	262
# of Cases in Age Interval								
0 - 60 days (0 - 2 months)	7	8	6	13	9	9	11	9
61 - 120 days (3 - 4 months)	8	9	7	7	9	14	12	11
121 - 180 days (5 - 6 months)	8	5	7	5	7	6	5	6
181 - 270 days (7 - 9 months)	2	1	3	5	3	3	1	4
> 270 days (> 9 months)	2	3	1	3	4	4	3	1

* Reflecting all documents received by 01/15/2017.

Table 6. Seattle vs. Regional Justice Center (KNT): Filing, Resolution, Pending Caseload (%)

King County Superior Court

	Q4/15		Q1/16		Q2/16		Q3/16		Q4/16	
	SEA	KNT	SEA	KNT	SEA	KNT	SEA	KNT	SEA	KNT
Filings Total <i>(excl. filings with clerk)</i>	63%	37%	64%	36%	63%	37%	65%	35%	63%	37%
Criminal (excl. RALJ)	55%	45%	57%	43%	56%	44%	56%	44%	54%	46%
General Civil (excl. RALJ)	55%	45%	59%	41%	55%	45%	56%	44%	55%	45%
Domestic	62%	38%	61%	39%	59%	41%	61%	39%	60%	40%
Probate	77%	23%	76%	24%	78%	22%	75%	25%	75%	25%
Guardianship	56%	44%	62%	38%	61%	39%	61%	39%	61%	39%
Adoption	70%	30%	77%	23%	67%	33%	75%	25%	76%	24%
Paternity	43%	57%	42%	58%	52%	48%	56%	44%	41%	59%
Mental Illness	100%	---	100%	---	100%	---	100%	---	100%	---
Juv. Dependency (DEP)	38%	62%	39%	61%	47%	53%	69%	31%	64%	36%
Juv. Termination (TER)	39%	61%	64%	36%	60%	40%	73%	27%	52%	48%
Juvenile ARY/CHINS/Other	48%	52%	43%	57%	45%	55%	53%	47%	49%	51%
Juvenile Truancy	48%	52%	42%	58%	44%	56%	85%	15%	38%	62%
Juvenile Offender	100%	---	100%	---	100%	---	100%	---	100%	---
Criminal RALJ	93%	7%	98%	2%	96%	4%	71%	29%	100%	---
Civil RALJ	93%	7%	71%	29%	75%	25%	80%	20%	93%	7%
Resolution Total <i>(excl. filings with clerk)</i>	62%	38%	65%	35%	63%	37%	63%	37%	64%	36%
Criminal (excl. RALJ)	52%	48%	57%	43%	53%	47%	56%	44%	57%	43%
General Civil (excl. RALJ)	55%	44%	59%	41%	54%	46%	54%	46%	56%	44%
Domestic	60%	40%	61%	49%	60%	40%	60%	40%	62%	38%
Probate	76%	24%	76%	24%	78%	22%	76%	24%	74%	26%
Guardianship	59%	41%	55%	45%	63%	37%	57%	43%	64%	36%
Adoption	75%	25%	72%	28%	70%	30%	72%	28%	82%	18%
Paternity	46%	54%	52%	48%	26%	74%	61%	39%	52%	48%
Mental Illness	100%	---	100%	---	100%	---	100%	---	100%	---
Juv. Dependency (DEP)	38%	62%	39%	61%	48%	52%	46%	54%	70%	30%
Juv. Termination (TER)	49%	51%	57%	43%	48%	52%	54%	46%	78%	22%
Juvenile ARY/CHINS/Other	42%	58%	43%	57%	38%	62%	60%	40%	56%	44%
Juvenile Truancy	44%	56%	54%	46%	48%	52%	38%	62%	53%	47%
Juvenile Offender	100%	---	100%	---	100%	---	100%	---	100%	---
Criminal RALJ	97%	3%	81%	19%	90%	10%	98%	2%	97%	3%
Civil RALJ	75%	25%	100%	---	75%	25%	79%	21%	94%	6%
Pending Total <i>(excl. filings with clerk)</i>	64%	36%	63%	37%	63%	37%	65%	35%	64%	36%
Criminal (excl. RALJ)	57%	43%	57%	43%	58%	42%	59%	41%	58%	42%
General Civil (excl. RALJ)	68%	32%	68%	32%	68%	32%	68%	32%	67%	33%
Domestic	60%	40%	60%	40%	60%	40%	60%	40%	60%	40%
Probate	80%	20%	79%	21%	79%	21%	77%	23%	79%	21%
Guardianship	57%	43%	60%	40%	59%	41%	62%	38%	60%	40%
Adoption	71%	29%	76%	24%	74%	26%	76%	24%	66%	34%
Paternity	53%	47%	48%	52%	62%	38%	58%	42%	49%	51%
Mental Illness	100%	---	100%	---	100%	---	100%	---	100%	---
Juv. Dependency (DEP)	39%	61%	37%	63%	37%	63%	61%	39%	64%	36%
Juv. Termination (TER)	54%	46%	55%	45%	59%	41%	68%	32%	65%	35%
Juvenile ARY/CHINS/Other	60%	40%	60%	40%	62%	38%	63%	37%	64%	36%
Juvenile Truancy	51%	49%	48%	52%	47%	53%	50%	50%	47%	53%
Juvenile Offender	100%	---	100%	---	100%	---	100%	---	100%	---
Criminal RALJ	89%	11%	93%	7%	95%	5%	91%	9%	91%	9%
Civil RALJ	88%	12%	75%	25%	75%	25%	78%	22%	87%	13%

Reflecting all documents received by 01/15/2017.

Table 7. Quarterly Utilization of Pro Tem Judges/Commissioners ⁽¹⁾

Category	Q3/14	Q4/14	Q1/15	Q2/15	Q3/15	Q4/15	Q1/16	Q2/16	Q3/16	Q4/16*
Grand Total	1510	1510	797	1226	1054	1733	769	1157	859	1732
Judge FTE Equivalent ⁽³⁾	3.4	3.4	1.8	2.7	2.3	3.9	1.7	2.6	1.9	3.8
By Work Type										
Pro Tem Judge	332	459	70	97	130	236	99	191	134	436
Pro Tem Commissioner	1178	1051	709	1117	925	1497	679	966	725	1256
Unspecified	0	0	17	13	0	0	0	0	0	41
By Location										
KCCCH	655	916	317	454	346	882	420	394	346	840
MRJC	377	273	193	273	326	501	193	239	214	389
Juvenile	283	276	237	312	260	234	123	405	201	367
ITA	195	46	33	174	122	117	33	119	98	137
Other	0	0	17	13	0	0	0	0	0	0
By Calendar Type										
Criminal	75	262	13	51	112	185	70	50	55	130
Civil	32	22	0	0	0	0	3	0	0	0
Ex Parte	333	170	102	219	100	264	64	134	95	111
Family Law/Domestic	506	715	396	453	461	929	470	421	397	743
Dependency	119	133	183	225	240	172	81	251	120	250
Juvenile Offender	144	119	47	45	18	51	27	125	69	108
BECCA	20	13	7	42	3	11	16	29	13	10
ITA	195	46	33	174	122	117	33	119	98	137
Juvenile Drug Court	0	0	0	0	0	0	0	0	0	0
Family Treatment Court	0	0	0	0	0	0	0	0	0	0
Plea Calendar	71	8	0	0	0	0	0	4	11	157
Status/Non-Compliance	6	13	0	4	0	0	7	16	2	5
Other or Unspecified	10	13	17	13	0	0	0	9	0	82
By Reason										
Vacation Backfill	572	674	396	527	673	818	397	582	499	783
Medical Backfill	208	292	147	156	168	294	211	213	223	302
Duty Time	249	219	211	244	132	288	134	189	89	166
Conference Coverage	229	4	0	257	0	59	0	134	24	0
Congestion	80	259	8	30	69	126	23	29	14	235
Vacancy Coverage	109	0	0	0	0	5	4	0	0	185
Other	64	63	35	13	12	145	0	11	10	61

(1) This table is based on the time sheet for compensation

(2) Judge FTE Equivalent = # of hours / [7.5 hours/day * 20 days/month * 3 months] = # of hours/450.

Data for the most current quarter are incomplete at reporting time and will be updated in next quarterly report.

The statistics on Pro Tem judge/commissioner use provide information on the external help the court has obtained in order to handle the workload. The data are collected on the time sheet for compensation (therefore it does not include unpaid volunteering or visiting judges/commissioners). The database on Pro Tem judges/commissioners is managed by the Administrative Services Department (ASD) of King County Superior Court. The Pro Tem total hours presented in this section are provided quarterly by ASD.

Table 8. Family Law Activity

	2ND QTR, 2015		3RD QTR, 2015		4TH QTR, 2015		1ST QTR, 2016		2ND QTR, 2016		3RD QTR, 2016		4TH QTR, 2016	
	HRGS	ORDS	HRGS	ORDS	HRGS	ORDS	HRGS	ORDS	HRGS	ORDS	HRGS	ORDS	HRGS	ORDS
SEATTLE														
FAM.LAW	383	1814	524	1833	510	1665	451	1673	483	1643	465	1546	430	1506
DAILY AVG.	6	30	9	30	8	27	7	27	8	27	8	25	7	25
PATERNITY	49	1035	112	964	117	923	103	909	67	752	76	840	94	752
DAILY AVG.	1	17	2	16	2	15	2	15	1	12	1	14	2	12
DOM. VIOL.	239	576	261	598	229	643	232	666	236	666	225	707	239	653
DAILY AVG.	4	9	4	10	4	11	4	11	4	11	4	12	4	11
	2ND QTR, 2015		3RD QTR, 2015		4TH QTR, 2015		1ST QTR, 2016		2ND QTR, 2016		3RD QTR, 2016		4TH QTR, 2016	
	HRGS	HRGS	HRGS	ORDS	HRGS	ORDS	HRGS	ORDS	HRGS	ORDS	HRGS	ORDS	HRGS	ORDS
KENT														
FAM.LAW	363	1433	380	1400	403	1362	372	1309	368	1304	339	1268	361	1133
DAILY AVG.	6	23	6	23	7	22	6	21	6	21	6	21	6	19
PATERNITY	41	757	57	764	54	734	72	763	46	697	59	622	63	515
DAILY AVG.	1	12	1	13	1	12	1	13	1	11	1	10	1	8
DOM. VIOL.	478	704	395	782	356	749	338	719	323	823	334	826	302	807
DAILY AVG.	8	12	6	13	6	12	6	12	5	13	5	14	5	13
	2ND QTR, 2015		3RD QTR, 2015		4TH QTR, 2015		1ST QTR, 2016		2ND QTR, 2016		3RD QTR, 2016		4TH QTR, 2016	
	HRGS	ORDS	HRGS	ORDS	HRGS	ORDS	HRGS	ORDS	HRGS	ORDS	HRGS	ORDS	HRGS	ORDS
SEA/KNT														
TOTAL	1553	6319	1729	6341	1669	6076	1568	6039	1523	5885	1498	5809	1489	5366
DAILY AVG.	25	104	28	104	27	100	26	99	25	96	25	95	24	88

The statistics on family law and Ex Parte activity are obtained directly from SCOMIS using the appropriate docket codes.

Table 9. Ex Parte Activity

	4TH QTR, 2015		1ST QTR, 2016		2ND QTR, 2016		3RD QTR, 2016		4TH QTR, 2016	
	HRGS	ORDS	HRGS	ORDS	HRGS	ORDS	HRGS	ORDS	HRGS	ORDS
SEATTLE	102	321	63	321	65	282	65	289	87	294
ADOP/PAT	102	321	63	321	65	282	4	429	7	344
DOM. VIOL.	9	417	10	388	8	405	317	622	259	534
OTH. CIVIL	237	560	241	544	281	609	375	1688	400	1785
DOMESTIC	594	2176	462	1774	401	1845	1203	2445	1143	2367
PROB/GDN	1226	2306	1258	2576	1345	2781	1964	5473	1896	5324
SUBTOTAL	2168	5780	2034	5603	2100	5922	32	90	31	87
DAILY AVG.	36	95	33	92	34	97	65	289	87	294
SEATTLE MAIL-IN										
ADOP/PAT	---	0	---	0	---	0	---	0	---	0
DOM. VIOL.	---	0	---	0	---	1	---	0	---	2
OTH. CIVIL	---	151	---	148	---	300	---	170	---	169
DOMESTIC	---	29	---	51	---	27	---	22	---	24
PROB/GDN	---	78	---	89	---	97	---	89	---	76
SUBTOTAL	---	258	---	288	---	425	---	281	---	271
DAILY AVG.	---	4	---	5	---	7	---	5	---	4
KENT										
ADOP/PAT	29	93	29	99	35	108	32	95	29	76
DOM. VIOL.	1	490	1	515	2	582	1	612	3	483
OTH. CIVIL	328	493	246	416	299	550	326	579	293	541
DOMESTIC	373	1336	294	1179	375	1251	398	1348	377	1296
PROB/GDN	452	906	385	835	471	816	473	760	423	728
SUBTOTAL	1183	3318	955	3044	1182	3307	1230	3394	1125	3124
DAILY AVG.	19	54	16	50	19	54	20	56	18	51
KENT MAIL-IN										
ADOP/PAT	---	1	---	1	---	0	---	0	---	1
DOM. VIOL.	---	0	---	0	---	0	---	0	---	0
OTH. CIVIL	---	46	---	41	---	68	---	43	---	30
DOMESTIC	---	11	---	2	---	21	---	11	---	10
PROB/GDN	---	31	---	34	---	34	---	32	---	28
SUBTOTAL	---	89	---	78	---	123	---	86	---	69
DAILY AVG.	---	1	---	1	---	2	---	1	---	1
ALL SEA AND KENT										
TOTAL	3351	9445	2989	9014	3282	9778	3194	9235	3021	8789
AVERAGE	55	154	49	148	54	160	52	151	50	144

Note: Statistical report on Ex Parte via Clerk commenced in January 2009 and discontinued in 2016 when technology in E-filing allows orders being electronically signed by judicial officers without a department designation.

Appendix Glossary and Definition

General Definition

Active Status

A case is active if it is not on suspense status (see Suspense Status).

Case

A case is defined as a filing with an assigned case number (or a case number plus a defendant connection code in pre-1990 criminal filings).

Completion

A case is completed when dispositive document is filed with the court following resolution.

Jury Trial

A hearing is reported as a jury trial if the jury is impaneled.

New Case

A new case is an original filing with new case number assigned.

Non-Jury Trial

A hearing is reported as a non-jury trial if an opening statement is made, waived, or reserved. A juvenile fact finding hearings is reported as a non-jury trial.

Pending Case

A case is defined as pending if it is unresolved and active (not in suspense).

Reactivated Case

A case returns to active status from suspense status during the reporting period.

Re-opened Cases

A case is re-opened if it has been previously completed but returns to the court for supplement or change of the original case resolution. A re-opened case does not have a new case number. Only resolved cases can be "re-opened". (Note: measurement not available as of July 1996. SCOMIS capacity may exist after conversion to DB2 in the future).

Resolution

A case is resolved if all issues in the complaint are fully adjudicated.

Suspended Case

A case is placed in suspense status from active status during the reporting period.

Suspense Status

A case is on suspense status if it is on warrant, appeal, stay, mediation, arbitration ("Deferred Prosecution" is not a suspense status, but is treated as a resolution).

Trial

A hearing set before a judge or jury in which all the issues in the case are meant to be resolved. A trial normally includes opening statements to the court or jury stating what the evidence will show, introduction of witnesses and exhibits for direct and cross examination, final arguments to the court or jury in which counsel argue both the evidence and the law, and judgment by the court or jury stating what the facts of the case are and what law applies to the facts. In a jury case, it also includes the selection of the jury. A trial can be held

for one or more cases. A single trial may be held to adjudicate more than one case (as defined above).

Post-resolution Modifications

In this report, we also report the post-resolution modifications for case type 3 (domestic) and 5 (paternity). These numbers are based on the tracks (DMOD and DTBA) opened after the original resolution date (i.e., if the track beginning date is after the resolution date).

Section I. Filing Activity

Additional Filings with Clerk

Filings with clerk without assigning a SCOMIS case number. This reporting category consists of search warrants, wire taps, extradition, oaths and orders pertaining to Pro Tem judge/commissioners/Court

Reporters/Bailiffs, and other "non-case" filings as recorded under 12050 system.

Annual Filings

Total number of new case filings during the calendar year (January 1 to December 31).

Adoption Cases

This reporting category includes the following "cause-of-action" codes within SCOMIS case type 5:

- Relinquishment (REL)
- Termination of Parent/Child Relationship (TER)
- Adoption (ADP)
- Miscellaneous (MSC)
- Name Change - Confidential (CHN)
- Initial Pre-Placement Report Filed with Clerk (PPR)

General Civil Cases

"General Civil" cases include all civil matters other than Domestic, Probate, Guardianship, Adoption, Paternity and appeals from courts of limited jurisdiction and "Matters Filed with Clerk". "General civil" cases include small claims as identified by the "Small Claim Track". This reporting category includes the following "cause-of-action" codes within SCOMIS case type 2:

- Administrative Law Review (ALR)
- Change of Name - Non-Confidential (CHN)
- Collection (COL)
- Commercial (COM)
- Condemnation (CON)
- Domestic Violence Protection (DVP)
- Emancipation of Minor (EOM)
- Foreclosure (FOR)
- Civil Harassment (HAR)
- Injunction (INJ)
- Other Malpractice (MAL)
- Medical Malpractice (MED)
- Meretricious Relationship (MER)
- Malicious Harassment (MHA)
- Miscellaneous (MSC)
- Minor Settlement (MST) - as of 10/1/96, under Guardianship
- Petition of Civil Commitment- Sexual Predator (PCC)

- Property Fairness (PFA)
- Personal Injury (PIN)
- Property Damage (PRP)
- Quiet Title (QTI)
- Small Claims (LCA/LCI on "Small Claim Track")
- Seizure of Property from the Commission of a Crime (SPC)
- Seizure of Property Resulting from a Crime (SPR)
- Tort Motor Vehicle (TMV)
- Tort Other (TTO)
- Unlawful Detainer (UND)
- Wrongful Death (WDE)
- Writ of Habeas Corpus (WHC)
- Miscellaneous Writ (WMW)
- Writ of Mandamus (WRM)
- Writ of Restitution (WRR)
- Writ of Review (WRV)

Civil RALJ Cases

Civil appeals from courts of limited jurisdiction (excluding small claims as identified by the "Small Claim Track"). Civil RALJ includes the following "cause-of-action" reporting categories:

- Lower Court Appeal - Civil and "Not a Small Claim"
- Lower Court Appeal - Infraction and "Not a Small Claim"

Note: The Civil RALJ cases are determined based on both SCOMIS "cause-of-action" code (LCA and LCI) within SCOMIS case type 2 and the "Small Claim Track".

Criminal Cases (excl. RALJ)

Adult criminal cases, excluding appeals from courts of limited jurisdiction. This reporting category includes the following crime categories within SCOMIS case type 1:

- Homicide
- Sex Crime
- Robbery
- Assault
- Theft/Burglary
- Motor Vehicle Theft
- Controlled Substance
- Other Felony
- Others (Misdemeanor, Non-charge Case)

Criminal RALJ Cases

Criminal appeals from courts of limited jurisdiction. This reporting category includes all SCOMIS case type 1 cases that have an appeal from lower court field of "Yes".

Domestic Cases

This reporting category includes the following "cause-of-action" codes within SCOMIS case type 3:

- Annulment – Invalidity (INV)
- Child Custody (CUS)
- Dissolution With Children Of The Marriage (DIC)
- Dissolution With No Children Of The Marriage (DIN)
- Dissolution of Domestic Partnership – With Children (DPC)
- Dissolution of Domestic Partnership – With No Children (DPN)
- Foreign Judgment (FJU)
- Invalidity – Domestic Partnership (INP)
- Mandatory Wage Assignment (MWA)
- Miscellaneous (MSC)
- Modification (MOD)
- Modification – Support Only (MDS)
- Out-Of-State Child Custody (OSC)
- Parenting Plan / Child Support (PPS)
- Reciprocal, Respondent In-County (RIC)
- Reciprocal, Respondent Out-of-County (ROC)
- Legal Separation (SEP)
- Legal Separation – Domestic Partnership (SPD)

Guardianship Cases

This reporting category includes the following "cause-of-action" codes within SCOMIS case type 4:

- Guardianship/Estate (G/E)
- Guardianship (GND)
- Limited Guardianship (LGD)
- Minor Settlement (MST)

Juvenile ARY/CHINS Cases

Juvenile dependency cases, excluding truancy cases and DEP cause code. This reporting category includes following "cause-of-action" codes within SCOMIS case type 7:

- Alternative Residential Placement (ARP)
- At-Risk Youth (ARY)
- Child in Need of Service (CNS)

Juvenile Dependency Cases

This reporting category includes following "cause-of-action" codes within SCOMIS case type 7:

- Dependency (DEP)
- Termination (TER)
- Developmental Disability (DDP)
- Guardianship Foster Children (GFC)
- Reinstatement of Parental Rights (RPR)
- Extension of Foster Care (EFC)
- Relative Visitation (RVS)

Juvenile Offender Cases

This reporting category includes the following crime categories in SCOMIS case type 8:

- Homicide
- Sex Crime
- Robbery
- Assault
- Theft/Burglary
- Motor Vehicle Theft
- Controlled Substance
- Other Felony
- Others (Misdemeanor, Non-charge Case)

Juvenile Truancy Cases

Mandatory truancy filings started on 10/01/1995. This reporting category includes the following "cause-of-action" code within SCOMIS case type 7:

- Truancy (TRU)

Matters Filed with Clerk

Filings with clerk (case numbers assigned), but requiring little or no judicial action. This reporting category includes the following "cause-of-action" codes within SCOMIS case type 2:

- Abstract of Judgment (ABJ)
- Foreign Judgment (FJU)
- Tax Warrant (TAX)
- Transcripts of Judgment (TRJ)

Mental Illness Cases

This reporting category includes all "cause-of-action" codes within SCOMIS case type 6:

- Alcoholic Treatment (ALT)
- Mental Illness - Adult (MI)
- Mental Illness - Juvenile (MIJ)

Paternity Cases

This reporting category includes the following "cause-of-action" codes within SCOMIS case type 5:

- Modification (MOD)
- Paternity (PAT)
- Paternity/URESA/UIFSA (PUR)

Probate Cases

This reporting category includes the following "cause-of-action" codes within SCOMIS case type 4:

- Absentee (ABS)
- Disclaimer (DSC)
- Estate (EST)
- Foreign Will (FNW)
- Miscellaneous (MSC)
- Non-Probate Notice to Creditors (NNC)
- Will Only (WLL)

Total Cases

New cases with case numbers assigned, excluding “Matters Filed with Clerk” and “Additional Filings with Clerk”.

Year-to-Date Filings

Total number of new filings since the beginning of calendar year (January 1) to the end of reporting period.

Section II. Resolution Category

Adoption - Resolved by Trial

Court Decision after Non-Jury Trial (CDAT)

Adoption - Uncontested

Consolidated Case (CONS)
Uncontested Resolution (UNDS)

Adoption - Settlement/Dismissal

Closed by Court Order after a Hearing (CLCO)
Dismissal without Trial (DSM)
Dismissal after Non-Jury Trial Commencement (DAT)
Settled after Non-Jury Trial Commencement (SAT)
Settled by Parties/Agreed Judgment (STPR)

Adoption - Closure by Clerk

Dismissal/Closure by Clerk (DSCK)

Adoption - Others

Change of Venue/Jurisdiction (CHV)
Other Non-specified Resolutions

Civil - Resolved by Jury Trial

Jury Verdict after Trial (JVAT)

Civil - Resolved by Non-Jury Trial

Court Decision after Non-Jury Trial (CDAT)

Civil - Summary Judgment

Summary Judgment (SMJG)

Civil - Default/Uncontested

Consolidated Case (CONS)
Default Judgment (DFJG)
Uncontested Resolution (UNDS)

Civil - Arbitration

Settle by Arbitration (ARBA)

Civil - Settlement/Dismissal

Closed by Court Order after a Hearing (CLCO)
Dismissal after Non-Jury Trial (DAT)
Dismissal after Jury Trial (DJT)
Dismissal (DSM)
Settled after Non-Jury Trial Commencement (SAT)
Settled after Jury Trial Commencement (SJT)
Settled by Parties/Agreed Judgment (STPR)

Civil - Closure by Clerk

Dismissal/Closure by Clerk (DSCK)

Civil - Others

Transferred to Federal bankruptcy Court (BANK)
Change of Venue/Jurisdiction (CHV)
Other Non-specified Resolutions

Civil RALJ - RALJ Decision

Court Decision to Affirm Appeal/review (CDTA)
Court Decision to Modify Appeal/Review (CDTM)
Court Decision to Reverse Appeal/review (CDTR)

Civil RALJ - Dismissal

Dismissal and Remand of Appeal/Review (DSRM)

Civil RALJ - Others

Other Non-specified Resolutions

Comparison with Court Standard

Percentage of cases actually falling within the Court’s standard benchmark.

Court Standard

Benchmarks set by a state advisory committee and adopted by the court indicating percentage of cases to be resolved at certain age (in months, 1 month = 30 days as used in the Advisory Case Processing Time Standard as published in the Court Rule).

Court standard is based on timelines as suggested by State Advisory Committee. For a case type with no time standard, the standard for a similar case type is adopted if appropriate.

Criminal: 90% by 4 months, 98% by 6 months, 100% by 9 months.

Civil: 90% by 12 months, 98% by 18 months, 100% by 24 months.

Domestic: 90% by 8 months, 98% by 10 months, 100% by 14 months.

Probate/Guardianship: 90% by 8 months, 98% by 18 months, 100% by 36 months.

Adoption/Paternity: 90% by 8 months, 98% by 10 months, 100% by 14 months.

Mental Illness/Juvenile Truancy: No standard yet.

Juvenile Dependency: 90% by 8 months, 98% by 10 months, 100% by 14 months.

Juvenile Offender: 90% by 4 months, 98% by 6 months, 100% by 9 months.

Criminal RALJ/Civil RALJ: 90% by 4 months, 98% by 5 months, 100% by 6 months.

Criminal - Resolved by Jury Trial

Acquittal by Jury (AQJV)
Convicted - Jury Verdict after Trial (CVJV)

Criminal - Resolved by Non-Jury Trial

Acquittal by Court (AQCT)
Convicted - Court Decision after Non-Jury Trial (CVCT)

Criminal - Resolved by Guilty Plea

Guilty Plea (GP)
Guilty Plea after Non-Jury Trial Commencement (GPAT)
Guilty Plea after Jury Trial Commencement (GPJT)

Criminal - Dismissal

Dismissal after Non-Jury Trial Commencement (DAT)
Dismissal after Jury Trial Commencement (DJT)
Dismissal (DSM)

Criminal - Others

Change of Venue (CHV)
Consolidated Case (CONS)
Continued Order of Prosecution with Completion (CTOP)*
Deferred Prosecution (DFPD)
Dismissal/Closure by Clerk (DSCK)
Governor’s warrant (GW)
Not Guilty by Reason of Insanity (NGRI)
Uncontested Resolution (UNDS)
Waiver of Extradition (WE)
Other Non-specified Resolutions

* Note: For adult criminal cases, “CTOP” does not necessarily constitute resolution. An adult criminal case with a “CTOP” as resolution code is counted as a resolved case only if a completion code exists along with the “CTOP”. If the resolution code is CTOP and there is no completion code, then the case is treated as unresolved. The primary reason for combining “CTOP” with a completion code is to determine resolution for drug court cases (CTOP is entered in the SCOMIS resolution field as soon as a defendant enrolls in

Drug Court). This rule on “CTOP” applies to adult criminal cases only.

Criminal RALJ - RALJ Decision

Court Decision to Affirm Appeal/review (CDTA)
Court Decision to Modify Appeal/Review (CDTM)
Court Decision to Reverse Appeal/review (CDTR)

Criminal RALJ - Dismissal

Dismissal and Remand of Appeal/Review (DSRM)

Criminal RALJ - Others

Other Non-specified Resolutions

Domestic - Resolved by Trial

Court Decision after Non-Jury Trial (CDAT)

Domestic - Default/Uncontested

Consolidated Case (CONS)
Default Judgment (DFJG)
Uncontested Resolution (UNDS)

Domestic - Settlement/Dismissal

Settled by Arbitration (ARBA)
Closed by Court Order after a Hearing (CLCO)
Dismissal after Non-Jury Trial Commencement (DAT)
Dismissal (DSM)
Settled after Non-Jury Trial Commencement (SAT)
Settled by Parties/Agreed Judgment (STPR)

Domestic - Closure by Clerk

Dismissal/Closure by Clerk (DSCK)

Domestic - Others

Change of Venue/Jurisdiction (CHV)
Summary Judgment (SMJG)
Other Non-specified Resolutions

Guardianship - Guardian Appointed

Guardian Appointed (PRGA)

Guardianship - Dismissal

Closed by Court Order after a Hearing (CLCO)
Dismissal (DSM)

Guardianship - Closure by Clerk

Dismissal/Closure by Clerk (DSCK)

Guardianship - Others

Change of Venue/Jurisdiction (CHV)
Consolidated Case (CONS)
Uncontested Resolution (UNDS)
Other Non-specified Resolutions

Juvenile Dependency - Finding of Dependency

Approved Petition (APP)

Juvenile Dependency - Dismissal

Dismissal (DSM)

Juvenile Dependency - Others

Change of Venue/Jurisdiction (CHV)
Consolidated Case (CONS)
Transfer of Jurisdiction (TRJU)
Other Non-specified Resolutions

Juvenile Offender - Resolved by Trial

Acquittal by Court (AQCT)
Convicted - Court Decision after Adjudictory Hearing (CVCT)

Juvenile Offender - Resolved by Guilty Plea

Guilty Plea before Adjudictory Hearing Commencement (GP)
Guilty Plea after Adjudictory Hearing Commencement (GPAT)

Juvenile Offender - Dismissal

Dismissal after Adjudictory Hearing Commencement (DAT)
Dismissal (DSM)

Juvenile Offender - Others

Change of venue (CHV)
Dismissal/Closure by Clerk (DSCK)
Consolidated Case (CONS)

Continued Prosecution (CTOP)
Decline of Jurisdiction (DECL)
Uncontested Resolution (UNDS)
Other Non-specified Resolutions

Juvenile Truancy - Finding of Truancy

Approved Petition (APP)

Juvenile Truancy - Dismissal

Dismissal (DSM)

Juvenile Truancy - Others

Change of Venue (CHV)
Consolidated Case (CONS)
Transfer of Jurisdiction (TRJU)
Other Non-specified Resolutions

Mental Illness - Court Decision to Commit

Court Decision to Commit (CDTC)

Mental Illness - Closed by Court

Closed by Court (CLCO)

Mental Illness - Dismissal

Dismissal (DSM)

Mental Illness - Others

Change of Venue/Jurisdiction (CHV)
Uncontested Resolution (UNDS)
Other Non-specified Resolutions

Paternity - Resolved by Trial

Court Decision after Non-Jury Trial (CDAT)

Paternity - Summary Judgment

Summary Judgment (SMJG)

Paternity - Default/Uncontested

Consolidated Case (CONS)
Default Judgment (DFJG)
Uncontested Resolution (UNDS)

Paternity - Settlement/Dismissal

Settled by Arbitration (ARBA)
Closed by Court Order after a Hearing (CLCO)
Dismissal after Non-Jury Trial Commencement (DAT)
Dismissal (DSM)
Settled after Non-Jury Trial Commencement (SAT)
Settled by Partied/Agreed Judgment (STPR)

Paternity - Closure by Clerk

Dismissal/Closure by Clerk (DSCK)

Paternity - Others

Change of Venue (CHV)
Other Non-specified Resolutions

Percentile

Percent of cases resolved at a given age. For example, if resolved cases had a 98 percentile of 12 months, it means that 98% of the cases were resolved within the age of 12 months, or conversely 2% of the cases were resolved after 12 months, not counting suspense time.

Probate - Personal Representative Appointed

Non-Intervention Probate (NIP)
Personal Representative Appointed (PRGA)

Probate - Dismissal

Closed by Court Order after a Hearing (CLCO)
Dismissal (DSM)

Probate - Closure by Clerk

Dismissal/Closure by Clerk (DSCK)

Probate - Others

Change of Venue (CHV)
Consolidated Case (CONS)
Uncontested Resolution (UNDS)
Other Non-specified Resolutions

Backlogged Cases

Active pending cases with an age exceeding the court-adopted time standard for each specific case type (recommended by the State Advisory Committee, see definition for *Court Standard*).

Section III. Pending Caseload

Adjustment

Adjustment made because of vacating of resolutions, or change in suspense status between two reporting period.

End Pending

Total number of pending cases at the end of reporting period.

Previous Pending

Total number of pending cases at the beginning of reporting period.

Resolution Rate

Resolution rate is defined as the ratio of number of resolutions to number of new filings (i.e., number of resolutions divided by number of new filings) during the reporting period. The resolution rate measures the relative pace of resolution in relation to the pace of new filings. A resolution rate of greater than 1 indicates the number of resolutions exceeds the number of new filings.

On-review Status

Cases that have been resolved (post-resolution) but still need court resources for periodic review and other remaining outstanding issues.

Probate (EST), Paternity (PAT) and Dependency (DEP): Resolved and not completed (paternity or dependency established, but outstanding issues remain).

Guardianship (GDN,LGD,GE): Resolved and on tracks of G1,G2,G3,GE or GD; Minor Settlement (MST): Resolved with a future hearing date.

Section IV. Age of Pending Cases

Case Age

The age of a case is the time (number of days) since the filing date, less any suspense time if applicable.

Median Age

The median age is the time that 50% of the cases are under and 50% are above the given age. For example, if pending cases have a median age of 12 months, it means that 50% of the pending cases are within the age of 12 months, and 50% of pending cases are over 12 months. The median age is more robust to cases with extreme age values than the average age.

Suspense Time

Time (days) that a case is on suspense status before its resolution. If a case has more than one suspense between filing and resolution, the suspense time is the total from all suspenses. Time on suspense status after resolution (e.g., appeals) is not counted.