

King County Superior Court
Quarterly Statistical Report

Second Quarter 2017

Department of Judicial Administration
Prepared by: Shiquan Liao, Ph.D., Statistician

Release Date: July 20, 2017

Report #: QTR-2017-02

Table 1. Year-to-Date Filing Activity

King County Superior Court

Reporting Category	Year-to-Date and Annual Filing Activity ⁽¹⁾					2016-2017 change (+ means "increase")		% of 2017 Total Filing ⁽²⁾
	2013	2014	2015	2016	2017	Cases	Percentage	
Total (incl. RALJ)								
Year-to-Date Filing	27123	26530	26580	26371	27007	+636	+2.4%	
Annual Filing	52755	52224	51652	51472				
Criminal (excl. RALJ)								
Year-to-Date Filing	2985	3177	3393	3241	3310	+69	+2.1%	12.3%
Annual Filing	6045	6213	6237	6632				
General Civil (excl. Asbestos)								
Year-to-Date Filing	11661	10826	10521	10712	10690	-31	-0.3%	39.6%
Annual Filing	22347	21378	21181	21181				
Asbestos Cases (civil) ⁽³⁾								
Year-to-Date Filing	37	16	15	17	7	-10	-58.8%	0.0%
Annual Filing	63	40	36	41				
Domestic								
Year-to-Date Filing	3990	4013	3868	3839	3896	+57	+1.5%	14.4%
Annual Filing	7897	7921	7559	7512				
Probate								
Year-to-Date Filing	3050	3010	3179	3186	3428	+242	+7.6%	12.7%
Annual Filing	5844	5920	6002	6073				
Guardianship								
Year-to-Date Filing	444	486	466	508	477	-31	-6.1%	1.8%
Annual Filing	884	928	969	1008				
Adoption								
Year-to-Date Filing	216	231	231	246	265	+19	+7.7%	1.0%
Annual Filing	483	470	460	458				
Paternity								
Year-to-Date Filing	519	376	337	272	282	+10	+3.7%	1.0%
Annual Filing	931	702	650	528				
ITA – Civil Commitment								
Year-to-Date Filing	1724	1890	1986	2076	2317	+241	+11.6%	8.6%
Annual Filing	3678	3852	4004	4152				
Juvenile Dependency (DEP)								
Year-to-Date Filing	443	546	383	398	412	+14	+3.5%	1.5%
Annual Filing	893	940	848	727				
Juvenile Termination (TER)								
Year-to-Date Filing	103	116	90	132	153	+21	+15.9%	0.6%
Annual Filing	209	325	214	219				
Juvenile ARY/CHINS/OTHERS								
Year-to-Date Filing	92	144	109	127	111	-16	-12.6%	0.4%
Annual Filing	168	285	217	247				
Juvenile Truancy								
Year-to-Date Filing	894	738	961	879	904	+25	+2.8%	3.3%
Annual Filing	1236	1233	1369	1222				
Juvenile Offender								
Year-to-Date Filing	857	857	916	644	646	+2	+0.3%	2.4%
Annual Filing	1808	1802	1649	1295				
Criminal RALJ								
Year-to-Date Filing	88	76	85	64	76	+12	+18.8%	0.3%
Annual Filing	181	172	180	111				
Civil RALJ								
Year-to-Date Filing	18	24	30	30	33	+3	+10.0%	0.1%
Annual Filing	53	47	57	66				
Matters Filed with Clerk ⁽⁴⁾								
Year-to-Date Filing	6655	6895	4845	4462	6073	+1611	+36.1%	
Annual Filing	13763	12240	9581	8742				

(1) New filings only (based on filing date), excluding re-opened cases (unable to count), and reflecting all documents received by 07/15/2017.

(2) New filings of each reporting category as percentage of "Year-to-Date Filing".

(3) "Matters Filed with Clerk" and "Additional Filings with Clerk" are not included in the "Total".

Chart 1-A. Quarterly Filing Activity
Total Judicial Cases Only ("Matters Filed with Clerk" excluded)

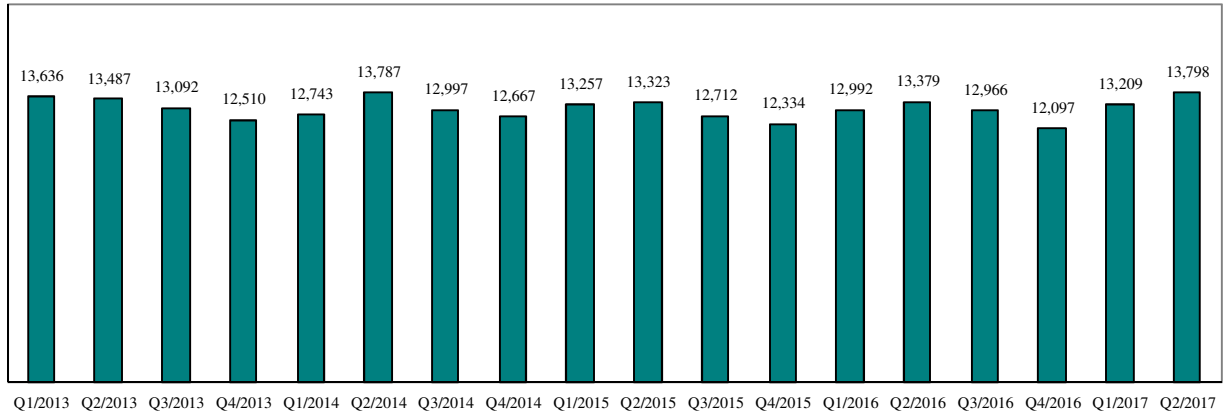
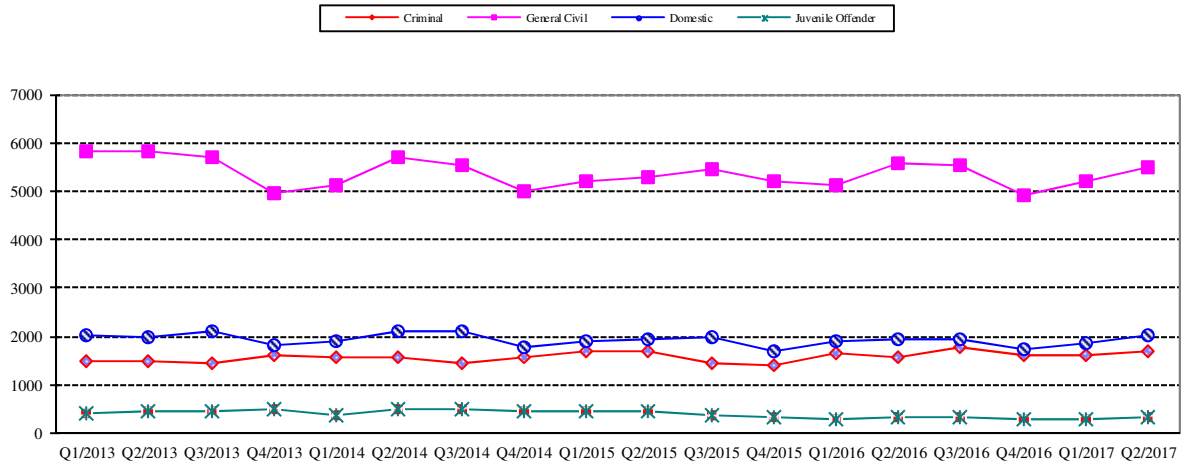


Chart 1-B. Quarterly Filings: Criminal, Domestic, General Civil and Juvenile Offender Cases Only



* Note: "General Civil" is specifically defined in this report. The category of "General Civil" does **not** include the following case types: domestic, probate, guardianship, adoption, paternity, ITA (civil commitment), juvenile cases (dependency, at-risk youth, child-in-need of service, civil RALJ, and tax filings that don't require judicial resources ("matters filed with clerk")). Please check the Appendix for the cause codes in the "General Civil" category.

Table 1-A. Post-Resolution Modifications (Domestic and Paternity Cases)

Based on Tracks Opened After Original Resolution Date

		2015Q1			2015Q2			2015Q3			2015Q4			Year 2015		
Location	Case Type	DMOD	DTBA	Total	DMOD	DTBA	Total	DMOD	DTBA	Total	DMOD	DTBA	Total	DMOD	DTBA	Total
KNT	Domestic	166	37	203	188	49	237	168	31	199	166	32	198	688	149	837
	Paternity	14	4	18	18	8	26	15	3	18	8	6	14	55	21	76
KNT Total		180	41	221	206	57	263	183	34	217	174	38	212	743	170	913
SEA	Domestic	150	56	206	145	85	230	171	44	215	146	49	195	612	234	846
	Paternity	8	8	16	8	7	15	7	8	15	5	4	9	28	27	55
SEA Total		158	64	222	153	92	245	178	52	230	151	53	204	640	261	901
KNT/SEA Total		338	105	443	359	149	508	361	86	447	325	91	416	1383	431	1814
		2016Q1			2016Q2			2016Q3			2016Q4			Year 2016		
Location	Case Type	DMOD	DTBA	Total	DMOD	DTBA	Total	DMOD	DTBA	Total	DMOD	DTBA	Total	DMOD	DTBA	Total
KNT	Domestic	174	29	203	167	56	223	204	32	236	179	34	213	724	151	875
	Paternity	16	6	22	12	6	18	12	3	15	8	4	12	48	19	67
KNT Total		190	35	225	179	62	241	216	35	251	187	38	225	772	170	942
SEA	Domestic	154	71	225	154	76	230	173	51	224	133	65	198	614	263	877
	Paternity	6	9	15	11	8	19	14	7	21	14	2	16	45	26	71
SEA Total		160	80	240	165	84	249	187	58	245	147	67	214	659	289	948
KNT/SEA Total		350	115	465	344	146	490	403	93	496	334	105	439	1431	459	1890
		2017Q1			2017Q2			2017Q3			2017Q4			Year 2017		
Location	Case Type	DMOD	DTBA	Total	DMOD	DTBA	Total	DMOD	DTBA	Total	DMOD	DTBA	Total	DMOD	DTBA	Total
KNT	Domestic	259	31	290	306	58	364							565	89	654
	Paternity	9	5	14	9	6	15							18	11	29
KNT Total		268	36	304	315	64	379							583	100	683
SEA	Domestic	289	55	344	300	87	387							589	142	731
	Paternity	9	3	12	16	8	24							25	11	36
SEA Total		298	58	356	316	95	411							614	153	767
KNT/SEA Total		566	94	660	631	159	790							1197	253	1450

* DMOD = parenting plan modification track; DTBA = support modification track.

Table 2. Number of Cases Resolved and Resolution Category (%)

King County Superior Court

Reporting Category	Q3/15	Q4/15	Q1/16	Q2/16	Q3/16	Q4/16	Q1/17	Q2/17*
Total Resolutions (excl. "Matters Filed with Clerk")	13497	13206	13113	13387	13274	12665	13067	13367
Criminal (excl. RALJ): # Resolved	1635	1532	1529	1444	1483	1432	1554	1536
Resolved by Jury Trial	2.6%	3.3%	4.3%	2.3%	2.5%	2.9%	3.3%	3.0%
Resolved by Non-Jury Trial	0.5%	0.5%	1.1%	1.0%	0.9%	0.1%	0.3%	0.5%
Resolved by Guilty Plea	81.7%	80.6%	80.1%	81.1%	80.3%	80.9%	79.5%	78.3%
Dismissal	14.7%	15.3%	13.8%	15.0%	15.5%	15.0%	15.8%	16.5%
Others	0.4%	0.4%	0.2%	0.6%	0.7%	1.1%	1.1%	1.6%
General Civil: # Resolved	5933	5853	5435	5872	5628	5301	5516	5608
Resolved by Jury Trial	0.5%	0.5%	0.6%	0.4%	0.5%	0.6%	0.2%	0.5%
Resolved by Non-Jury Trial	0.5%	0.3%	0.3%	0.4%	0.5%	0.3%	0.6%	0.4%
Summary Judgment	1.6%	1.8%	2.0%	2.0%	1.6%	1.6%	2.1%	2.2%
Default/ Uncontested	41.0%	42.1%	38.1%	40.2%	40.4%	38.3%	38.6%	38.0%
Arbitration	2.9%	2.7%	3.1%	3.3%	2.7%	3.2%	2.9%	3.1%
Settlement/Dismissal	50.4%	48.3%	52.6%	50.6%	49.4%	51.3%	51.9%	53.3%
Closure by Clerk	2.2%	3.6%	2.6%	2.5%	4.3%	3.4%	2.8%	1.5%
Others	0.8%	0.7%	0.8%	0.7%	0.8%	1.3%	1.1%	1.1%
Asbestos Cases (civil): # Resolved	12	10	9	14	8	16	9	7
Resolved by Jury Trial	0.0%	0.0%	11.1%	0.0%	12.5%	0.0%	0.0%	0.0%
Resolved by Non-Jury Trial	0.0%	0.0%	0.0%	0.0%	0.0%	0.0%	0.0%	0.0%
Summary Judgment	0.0%	50.0%	22.2%	0.0%	0.0%	0.0%	0.0%	28.6%
Default/ Uncontested	8.3%	0.0%	0.0%	7.1%	12.5%	6.3%	0.0%	28.6%
Arbitration	0.0%	0.0%	0.0%	0.0%	0.0%	0.0%	0.0%	0.0%
Settlement/Dismissal	66.7%	20.0%	55.6%	85.7%	62.5%	87.5%	66.7%	42.9%
Closure by Clerk	25.0%	30.0%	11.1%	7.1%	12.5%	6.3%	33.3%	0.0%
Others	0.0%	0.0%	0.0%	0.0%	0.0%	0.0%	0.0%	0.0%
Domestic: # Resolved	1959	2019	1810	1895	1881	1924	1829	1930
Resolved by Trial	5.2%	4.4%	4.0%	4.6%	4.8%	3.7%	4.1%	4.2%
Default/ Uncontested	10.0%	10.3%	10.1%	9.8%	10.2%	8.5%	9.4%	9.4%
Settlement /Dismissal	83.6%	84.5%	84.5%	84.3%	84.2%	86.6%	85.8%	84.9%
Closure by Clerk	0.5%	0.6%	0.8%	0.6%	0.4%	0.4%	0.4%	0.4%
Others	0.8%	0.3%	0.6%	0.6%	0.5%	0.7%	0.4%	1.2%
Probate: # Resolved	1431	1397	1561	1549	1473	1387	1680	1670
Personal Rep. Appointed	72.6%	72.8%	72.7%	72.3%	71.6%	70.7%	74.1%	73.4%
Dismissal	3.6%	4.3%	2.6%	2.8%	3.7%	2.7%	1.7%	4.1%
Closure by Clerk	0.0%	0.6%	0.1%	0.0%	0.0%	0.0%	0.0%	0.0%
Others	23.8%	22.3%	24.6%	24.9%	24.7%	26.6%	24.3%	22.6%
Guardianship: # Resolved	228	228	220	258	265	231	232	231
Guardian Appointed	54.4%	54.8%	55.5%	55.8%	47.6%	56.3%	50.9%	47.2%
Dismissal	43.9%	44.7%	43.2%	43.0%	51.7%	42.4%	48.3%	51.1%
Closure by Clerk	0.0%	0.0%	0.0%	0.0%	0.0%	0.0%	0.0%	0.0%
Others	1.8%	0.4%	1.4%	1.2%	0.8%	1.3%	0.9%	1.7%
Adoption: # Resolved	106	131	116	113	104	140	86	145
Resolved by Trial	0.0%	0.8%	0.0%	0.9%	0.0%	0.0%	0.0%	0.0%
Uncontested	7.6%	3.1%	9.5%	6.2%	3.9%	2.1%	3.5%	2.8%
Settlement /Dismissal	91.5%	93.9%	90.5%	92.9%	96.2%	97.9%	96.5%	97.2%
Closure by Clerk	0.0%	0.8%	0.0%	0.0%	0.0%	0.0%	0.0%	0.0%
Others	0.9%	1.5%	0.0%	0.0%	0.0%	0.0%	0.0%	0.0%
Paternity: # Resolved	176	153	171	140	141	121	127	150
Resolved by Trial	4.6%	0.0%	1.2%	2.1%	1.4%	1.7%	0.8%	0.7%
Summary Judgment	48.9%	45.8%	52.1%	39.3%	52.5%	43.8%	52.8%	50.0%
Default/ Uncontested	19.3%	24.2%	17.0%	25.7%	17.7%	20.7%	20.5%	18.7%
Settlement/Dismissal	27.3%	29.4%	29.8%	32.9%	27.7%	33.9%	26.0%	30.7%
Closure by Clerk	0.0%	0.0%	0.0%	0.0%	0.0%	0.0%	0.0%	0.0%
Others	0.0%	0.7%	0.0%	0.0%	0.7%	0.0%	0.0%	0.0%

Reflecting all documents received by 07/15/2017.

Table 2 (cont.). Number of Cases Resolved and Resolution Category (%)

King County Superior Court

Reporting Category	Q3/15	Q4/15	Q1/16	Q2/16	Q3/16	Q4/16	Q1/17	Q2/17*
ITA (civil commitment): # Resolved	1128	957	1014	1034	1085	1045	1073	1157
Court Decision to Commit	63.4%	60.4%	64.2%	65.3%	63.0%	59.3%	60.5%	57.6%
Closed by Court	0.0%	0.0%	0.0%	0.0%	0.0%	0.0%	0.0%	0.0%
Dismissal	18.2%	19.8%	20.6%	21.3%	16.7%	26.1%	24.0%	25.4%
Others	18.4%	19.9%	15.2%	13.4%	20.3%	14.6%	15.6%	17.0%
Juv. Dependency: # Resolved	153	159	172	187	397	140	164	195
Finding of Dependency	67.3%	80.5%	72.9%	81.8%	87.4%	77.9%	78.7%	78.5%
Dismissal	32.0%	19.5%	26.7%	18.2%	12.3%	22.1%	21.3%	21.5%
Others	0.7%	0.0%	1.2%	0.0%	0.3%	0.0%	0.0%	0.0%
Juv. Terminations: # Resolved	49	61	62	48	103	49	50	56
Finding of Dependency	77.6%	77.0%	74.2%	79.2%	95.2%	81.6%	90.0%	80.4%
Dismissal	22.4%	23.0%	25.8%	20.8%	4.8%	18.4%	10.0%	19.6%
Others	0.0%	0.0%	0.0%	0.0%	0.0%	0.0%	0.0%	0.0%
Juv. ARY/CHINS/OTHER:# Resolved	61	36	63	45	93	70	37	41
Approve of Petition	39.3%	52.8%	38.1%	28.9%	55.9%	62.8%	35.1%	24.4%
Dismissal	60.7%	47.2%	61.9%	71.1%	44.1%	37.2%	59.5%	68.3%
Others	0.0%	0.0%	0.0%	0.0%	0.0%	0.0%	5.4%	7.3%
Juvenile Truancy: # Resolved	124	264	524	324	151	387	351	285
Approve of Petition	0.8%	1.9%	5.0%	0.6%	7.3%	23.5%	3.4%	2.5%
Dismissal	99.2%	98.1%	95.0%	99.4%	92.7%	76.5%	96.6%	97.5%
Others	0.0%	0.0%	0.0%	0.0%	0.0%	0.0%	0.0%	0.0%
Juvenile Offender: # Resolved	451	363	364	413	398	373	310	316
Resolved by Trial (Fact Finding)	3.8%	1.1%	1.4%	4.6%	1.0%	3.5%	3.3%	4.1%
Resolved by Guilty Plea	28.4%	34.7%	37.4%	36.3%	34.4%	33.0%	35.2%	35.4%
Dismissal	43.7%	46.3%	40.9%	43.1%	43.2%	40.5%	37.7%	38.6%
Deferred Disposition (DDSP)	17.3%	13.2%	15.1%	12.6%	15.8%	17.4%	18.7%	17.4%
Others (including Deferred Prosecution)	6.9%	4.7%	5.2%	3.4%	5.5%	5.6%	5.2%	4.4%
Criminal RALJ: # Resolved	39	35	48	39	40	33	30	34
RALJ Decision	56.4%	54.3%	58.3%	79.5%	82.5%	66.7%	76.7%	70.6%
Dismissal	35.9%	45.7%	35.4%	10.3%	10.0%	15.2%	20.0%	17.7%
Others	7.7%	0.0%	6.3%	10.3%	7.5%	18.2%	3.3%	11.8%
Civil RALJ: # Resolved	12	8	15	12	24	16	19	15
RALJ Decision	16.7%	12.5%	46.7%	50.0%	37.5%	50.0%	36.8%	53.3%
Dismissal	83.3%	62.5%	46.7%	41.7%	25.0%	18.8%	42.1%	33.3%
Others	0.0%	25.0%	6.7%	8.3%	37.5%	31.3%	21.1%	13.3%

* Reflecting all documents received by 07/15/2017.

Chart 2-A. Quarterly Resolutions
Total Judicial Cases Only ("Matters Filed with Clerk" excluded)

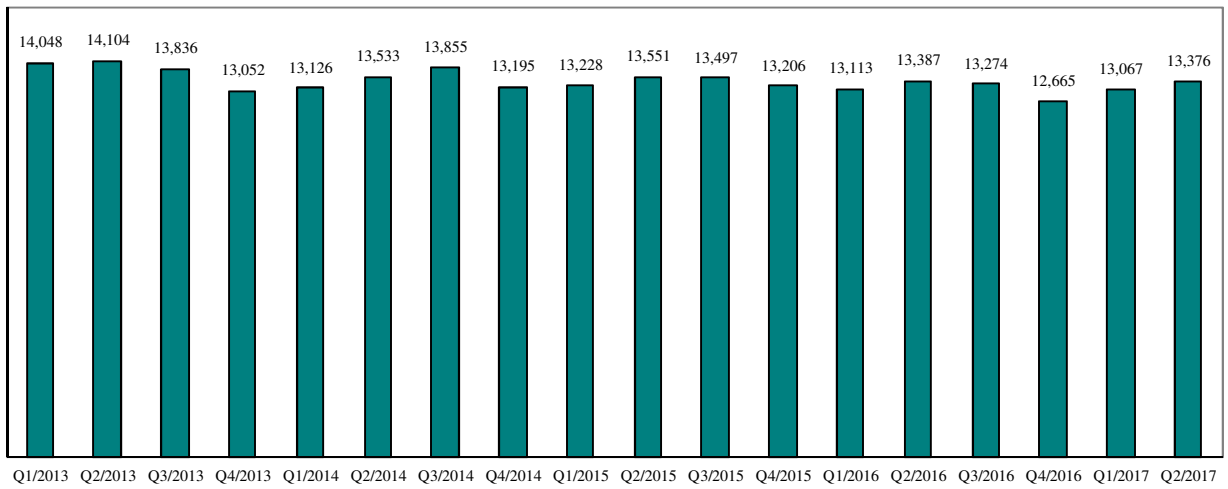
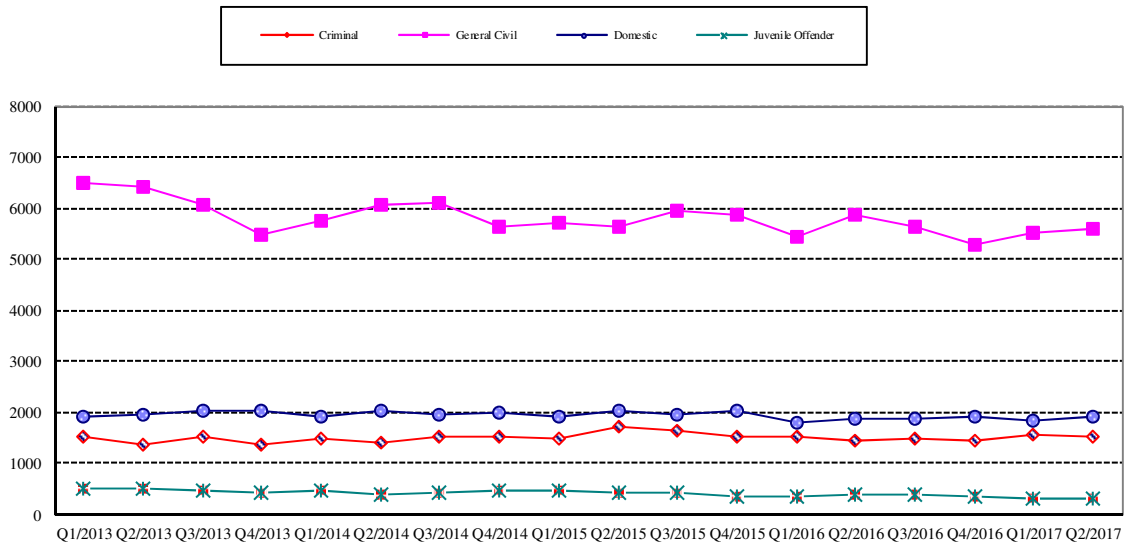


Chart 2-B. Quarterly Resolutions: Criminal, Dmestic, General Civil and Juvenile Offender Cases Only



* Note: "General Civil" is specifically defined in this report. The category of "General Civil" does **not** include the following case types: domestic, probate, guardianship, adoption, paternity, mental illness, juvenile cases (dependency, at-risk youth, child-in-need of service), civil RALJ, and tax filings that don't require judicial resources ("matters filed with clerk"). Please check the Appendix for the cause codes in the "General Civil" category.

Table 3. Age of Resolved Cases
King County Superior Court

Reporting Category	Age of Cases at Resolution							
	Q3/15	Q4/15	Q1/16	Q2/16	Q3/16	Q4/16	Q1/17	Q2/17*
Criminal (excl. RALJ)								
Age (days)								
50% Cases Resolved by Day	112	113	120	111	108	112	127	125
90% Cases Resolved by Day	326	306	364	346	328	317	371	371
Comparison with Court Standard of								
90% in 4 months	53%	53%	50%	54%	56%	53%	47%	49%
98% in 6 months	72%	73%	69%	71%	74%	71%	65%	65%
100% in 9 months	85%	88%	84%	86%	86%	87%	81%	81%
General Civil ⁽¹⁾								
Age (days)								
50% Cases Resolved by Day	31	35	38	33	28	42	40	41
90% Cases Resolved by Day	407	398	388	368	357	357	367	366
Comparison with Court Standard of								
90% in 12 months	85%	88%	86%	89%	92%	89%	90%	88%
98% in 18 months	95%	97%	96%	97%	98%	97%	98%	97%
100% in 24 months	98%	99%	99%	99%	99%	99%	99%	99%
Domestic								
Age (days)								
50% Cases Resolved by Day	161	149	176	172	147	154	172	144
90% Cases Resolved by Day	368	372	378	372	371	368	383	372
Comparison with Court Standard of								
90% in 8 months	64%	66%	61%	61%	66%	65%	62%	68%
98% in 10 months	75%	76%	73%	75%	78%	78%	76%	78%
100% in 14 months	94%	93%	92%	94%	94%	94%	94%	94%
Probate								
Age (days)								
50% Cases Resolved by Day	0	0	0	0	0	0	0	0
90% Cases Resolved by Day	19	19	12	13	24	8	4	22
Comparison with Court Standard of								
90% in 8 months	97%	97%	97%	97%	98%	96%	98%	97%
98% in 18 months	99%	99%	100%	99%	99%	99%	99%	99%
100% in 36 months	100%	100%	100%	100%	100%	100%	99%	100%
Guardianship								
Age (days)								
50% Cases Resolved by Day	71	62	70	68	71	65	73	63
90% Cases Resolved by Day	211	193	162	240	273	208	334	304
Comparison with Court Standard of								
90% in 8 months	91%	92%	96%	91%	85%	94%	85%	88%
98% in 18 months	98%	99%	100%	99%	98%	100%	97%	98%
100% in 36 months	100%	100%	100%	100%	100%	100%	100%	100%
Adoption								
Age (days)								
50% Cases Resolved by Day	42	55	62	66	99	69	55	61
90% Cases Resolved by Day	298	211	499	444	714	257	437	227
Comparison with Court Standard of								
90% in 8 months	90%	89%	80%	86%	68%	87%	83%	89%
98% in 10 months	93%	91%	84%	86%	79%	94%	84%	92%
100% in 14 months	95%	94%	89%	85%	81%	99%	88%	95%
Paternity								
Age (days)								
50% Cases Resolved by Day	135	139	164	142	172	154	143	141
90% Cases Resolved by Day	307	272	306	307	296	367	291	317
Comparison with Court Standard of								
90% in 8 months	76%	84%	73%	79%	71%	71%	82%	82%
98% in 10 months	90%	94%	88%	89%	92%	82%	93%	87%
100% in 14 months	98%	98%	97%	98%	97%	96%	99%	95%

Table 3 (cont.) Age of Resolved Cases

King County Superior Court

Reporting Category	Age of Cases at Resolution							
	Q3/15	Q4/15	Q1/16	Q2/16	Q3/16	Q4/16	Q1/17	Q2/17*
ITA (civil commitment) **								
Age (days)								
50% Cases Resolved by Day	4	4	3	4	4	4	4	4
90% Cases Resolved by Day	18	21	15	12	15	13	14	14
Juvenile Dependency (DEP)								
Age (days)								
50% Cases Resolved by Day	89	125	85	104	278	132	112	124
90% Cases Resolved by Day	217	221	218	230	570	283	232	268
Comparison with Court Standard of								
90% in 8 months	90%	94%	92%	93%	46%	85%	90%	82%
98% in 10 months	92%	95%	97%	96%	60%	90%	94%	90%
100% in 14 months	94%	98%	99%	96%	77%	96%	99%	95%
Juvenile Termination (TER)								
Age (days)								
50% Cases Resolved by Day	154	106	163	259	272	182	131	84
90% Cases Resolved by Day	382	350	406	665	680	679	437	453
Comparison with Court Standard of								
90% in 8 months	73%	81%	68%	45%	45%	63%	72%	81%
98% in 10 months	89%	84%	81%	61%	61%	68%	76%	83%
100% in 14 months	94%	97%	92%	69%	73%	72%	90%	89%
Juv ARY/CHINS/OTHER								
Age (days)								
50% Cases Resolved by Day	103	35	55	53	208	60	57	54
90% Cases Resolved by Day	304	288	294	230	730	338	230	223
Comparison with Court Standard of								
90% in 8 months	73%	90%	86%	96%	58%	86%	91%	95%
98% in 10 months	88%	93%	91%	98%	62%	86%	97%	95%
100% in 14 months	97%	97%	94%	100%	74%	93%	100%	100%
Juvenile Truancy**								
Age (days)								
50% Cases Resolved by Day	182	269	341	371	483	320	343	394
90% Cases Resolved by Day	646	394	493	514	591	608	456	777
Juvenile Offender								
Age (days)								
50% Cases Resolved by Day	92	88	99	112	90	93	94	86
90% Cases Resolved by Day	273	257	235	340	309	340	245	261
Comparison with Court Standard of								
90% in 4 months	63%	66%	60%	53%	60%	61%	59%	65%
98% in 6 months	79%	79%	79%	73%	79%	75%	78%	79%
100% in 9 months	90%	91%	95%	87%	87%	87%	92%	91%
Criminal RALJ								
Age (days)								
50% Cases Resolved by Day	258	260	247	269	292	273	349	269
90% Cases Resolved by Day	438	421	636	510	449	497	586	636
Civil RALJ								
Age (days)								
50% Cases Resolved by Day	165	170	165	172	165	151	163	161
90% Cases Resolved by Day	336	249	280	225	227	326	350	255

* Reflecting all documents received by 07/15/2017.

** No standard yet.

Table 4. Active Pending Caseload Statistics
King County Superior Court

Reporting Category	Q3/15	Q4/15	Q1/16	Q2/16	Q3/16	Q4/16	Q1/17	Q2/17*
Total (incl. RALJ)								
Previous Pending (+)	18623	18333	17886	18216	18216	18678	19119	19087
New Filing (+)	12712	12334	12992	13373	12966	12097	13209	13798
Resolved (-)	13497	13206	13113	13387	13274	12665	13067	13376
End Pending	18333	17886	18216	18663	18678	19119	19087	19674
Resolution Rate**	1.062	1.071	1.009	1.001	1.020	1.047	0.989	0.969
Criminal (excl. RALJ)								
Previous Pending (+)	2882	2727	2619	2725	2849	3050	3139	3116
New Filing (+)	1446	1395	1647	1594	1780	1610	1606	1704
Resolved (-)	1635	1532	1529	1444	1483	1432	1554	1536
End Pending	2727	2619	2725	2849	3050	3193	3116	3242
Resolution Rate**	1.131	1.098	0.928	0.906	0.833	0.889	0.968	0.901
General Civil								
Previous Pending (+)	7036	6851	6691	6686	6803	7044	7752	7336
New Filing (+)	5448	5210	5110	5602	5531	4931	5199	5491
Resolved (-)	5933	5853	5435	5872	5628	5301	5516	5608
End Pending	6851	6691	6686	6803	7044	7752	7336	7338
Resolution Rate**	1.089	1.123	1.064	1.048	1.018	1.075	1.061	1.021
Asbestos Cases (civil) ⁽¹⁾								
Previous Pending (+)	54	60	56	55	50	58	46	42
New Filing (+)	18	2	8	9	18	6	5	2
Resolved (-)	12	10	9	14	8	16	9	7
End Pending	60	56	55	50	58	46	42	39
Resolution Rate**	0.667	5.000	1.125	1.556	0.444	2.667	1.800	3.500
Domestic								
Previous Pending (+)	4497	4562	4234	4336	4416	4465	4337	4386
New Filing (+)	1997	1694	1897	1942	1947	1720	1850	2046
Resolved (-)	1959	2019	1810	1895	1881	1924	1829	1930
End Pending	4562	4234	4336	4416	4465	4337	4386	4497
Resolution Rate**	0.981	1.192	0.954	0.976	0.966	1.119	0.989	0.943
Probate								
Previous Pending (+)	562	581	580	624	703	715	684	808
New Filing (+)	1422	1419	1586	1600	1454	1425	1783	1645
Resolved (-)	1431	1397	1561	1549	1473	1387	1680	1670
End Pending	581	580	624	703	715	684	808	814
Resolution Rate**	1.006	0.984	0.984	0.968	1.013	0.973	0.942	1.045
Guardianship								
Previous Pending (+)	283	305	311	336	341	337	329	330
New Filing (+)	251	253	245	263	257	247	228	249
Resolved (-)	228	228	220	258	265	231	232	231
End Pending	305	311	336	341	337	329	330	351
Resolution Rate**	0.908	0.901	0.898	0.981	1.031	0.935	1.018	0.928
Adoption								
Previous Pending (+)	154	163	147	163	166	163	135	182
New Filing (+)	114	114	130	116	101	111	133	132
Resolved (-)	106	131	116	113	104	140	86	145
End Pending	163	147	163	166	163	135	182	170
Resolution Rate**	0.930	1.149	0.892	0.974	1.030	1.261	0.647	1.098
Paternity								
Previous Pending (+)	316	293	310	278	261	232	253	260
New Filing (+)	149	163	139	133	108	148	131	151
Resolved (-)	176	153	171	140	141	121	127	150
End Pending	293	310	278	261	232	253	260	266
Resolution Rate**	1.181	0.939	1.230	1.053	1.306	0.818	0.969	0.993

* Reflecting all documents received by 07/15/2017.

** A value of "Resolution Rate" less than one indicates the resolution pace is slower than the filing pace.

Table 4 (cont.) Active Pending Caseload Statistics
King County Superior Court

Reporting Category	Q3/15	Q4/15	Q1/16	Q2/16	Q3/16	Q4/16	Q1/17	Q2/17*
ITA (civil commitment)								
Previous Pending (+)	162	122	90	95	118	82	60	78
New Filing (+)	1085	935	1020	1056	1048	1028	1092	1225
Resolved (-)	1128	957	1014	1034	1085	1045	1073	1157
End Pending	122	90	95	118	82	60	78	148
Resolution Rate**	1.040	1.024	0.994	0.979	1.035	1.017	0.983	0.944
Juvenile Dependency (DEP)								
Previous Pending (+)	333	394	474	506	504	289	300	345
New Filing (+)	205	259	210	188	175	162	210	202
Resolved (-)	153	159	172	187	397	140	164	195
End Pending	394	474	506	504	289	300	345	353
Resolution Rate**	0.746	0.614	0.819	0.995	2.269	0.864	0.781	0.965
Juvenile Termination (TER)								
Previous Pending (+)	169	194	164	148	181	128	128	148
New Filing (+)	73	51	44	82	41	52	70	83
Resolved (-)	49	61	62	48	103	49	50	56
End Pending	194	164	148	181	128	128	148	175
Resolution Rate**	0.671	1.196	1.409	0.585	2.512	0.942	0.714	0.675
Juv ARY/CHINS/OTHERS								
Previous Pending (+)	89	87	111	118	136	98	86	103
New Filing (+)	41	56	63	64	51	61	52	59
Resolved (-)	61	36	63	45	93	70	37	41
End Pending	87	111	118	136	98	86	103	120
Resolution Rate**	1.488	0.642	1.000	0.703	1.824	1.148	0.712	0.695
Juvenile Truancy								
Previous Pending (+)	1271	1202	1329	1397	1430	1374	1237	1389
New Filing (+)	14	391	532	347	93	250	499	405
Resolved (-)	124	264	524	324	151	387	351	285
End Pending	1202	1329	1397	1430	1374	1237	1389	1513
Resolution Rate**	8.857	0.675	0.985	0.934	1.624	1.548	0.703	0.704
Juvenile Offender								
Previous Pending (+)	651	614	581	571	538	504	441	430
New Filing (+)	384	337	307	337	328	298	313	333
Resolved (-)	451	363	364	413	398	373	310	316
End Pending	614	581	571	538	504	441	430	488
Resolution Rate**	1.174	1.077	1.186	1.226	1.213	1.252	0.990	0.949
Criminal RALJ								
Previous Pending (+)	138	154	156	146	131	107	107	108
New Filing (+)	55	40	40	24	14	33	24	52
Resolved (-)	39	35	48	39	40	33	30	34
End Pending	154	156	146	131	107	107	108	129
Resolution Rate**	0.709	0.875	1.200	1.625	2.857	1.000	1.25	0.854
Civil RALJ								
Previous Pending (+)	26	24	33	32	36	32	31	26
New Filing (+)	10	15	14	16	20	15	14	19
Resolved (-)	12	8	15	12	24	16	19	15
End Pending	24	33	32	36	32	31	26	31
Resolution Rate**	1.200	0.533	1.071	0.750	1.200	1.067	1.357	0.789

* Reflecting all documents received by 07/15/2017.

** A value of "Resolution Rate" less than one indicates the resolution pace is slower than the filing pace.

Chart 4-A. Active Pending Caseload at Quarter End
Total Judicial Cases Only ("Matters Filed with Clerk" excluded)

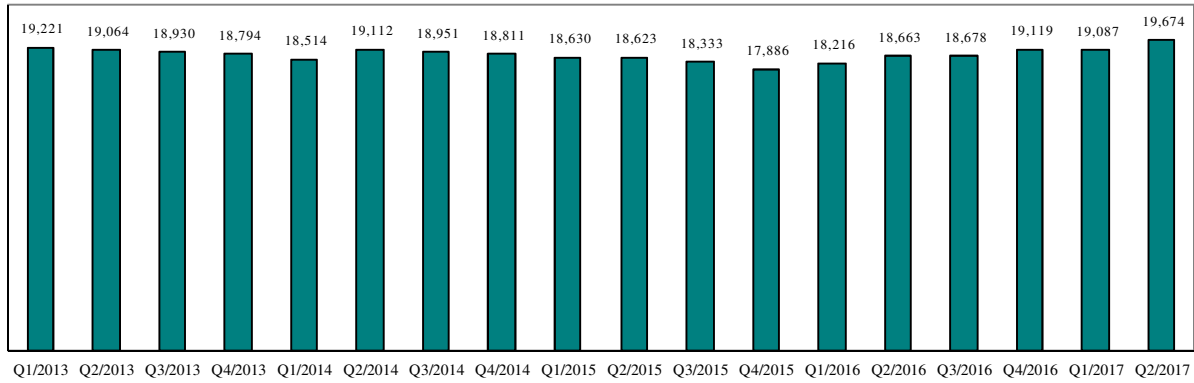


Chart 4-B. Active Pending Caseload at Quarter End: Domestic and General Civil Cases Only

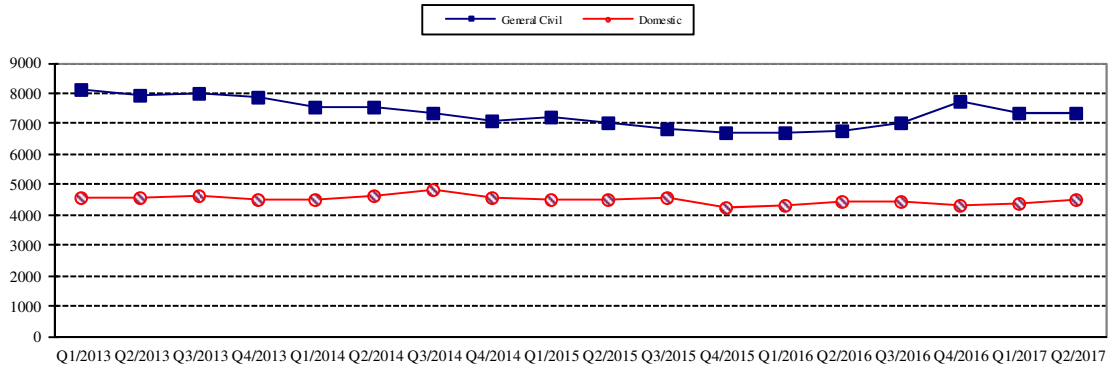
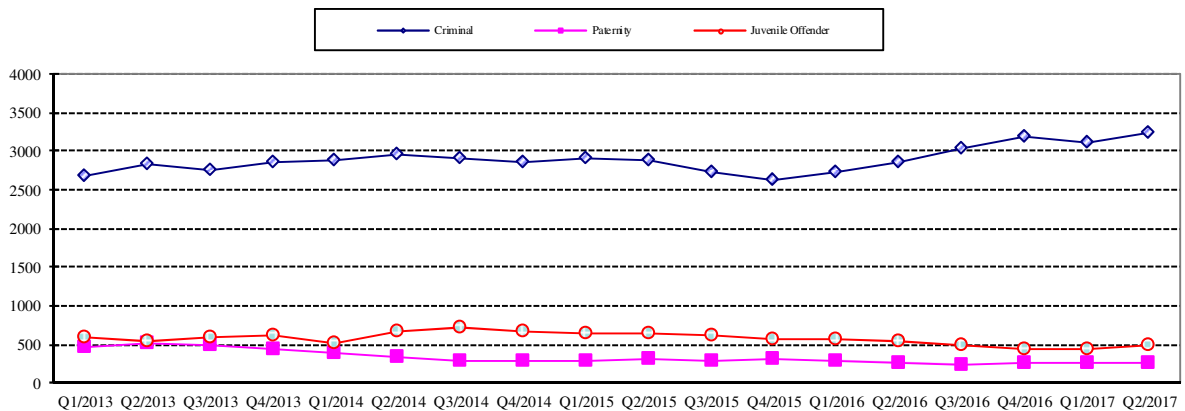


Chart 4-C. Active Pending Caseload at Quarter End:
Criminal, Juvenile Offender, Paternity and Dependency Cases Only



* Note: "General Civil" is specifically defined in this report. The category of "General Civil" does **not** include the following case types: domestic, probate, guardianship, adoption, paternity, mental illness, juvenile cases (dependency, at-risk youth, child-in-need of service), civil RALJ, and tax filings that don't require judicial resources ("matters filed with clerk"). Please check the Appendix for the cause codes in the "General Civil" category.

Table 5. Age of Pending Cases

King County Superior Court

Reporting Category	Age of Pending Cases and # of Cases in Each Age Interval							
	Q3/15	Q4/15	Q1/16	Q2/16	Q3/16	Q4/16	Q1/17	Q2/17*
Criminal (excl. RALJ): # of Cases	2727	2619	2825	2849	3050	3193	3116	3242
Age (days)								
Median (50 percentile)	106	110	95	99	101	111	115	106
95 percentile	572	610	395	541	542	564	562	529
# of Cases in Age Interval								
0 - 60 days (0 - 2 months)	929	808	1020	997	1046	964	993	1068
61 - 120 days (3 - 4 months)	572	586	547	671	629	709	602	699
121 - 180 days (5 - 6 months)	406	357	348	390	442	511	473	417
181 - 270 days (7 - 9 months)	331	337	306	292	389	387	436	408
> 270 days (> 9 months)	489	531	504	494	544	622	612	650
General Civil: # of Cases	6851	6691	6686	6803	7044	7752	7336	7338
Age (days)								
Median (50 percentile)	134	143	134	126	131	149	149	129
95 percentile	524	536	395	491	501	514	520	506
# of Cases in Age Interval								
0 - 120 days (0 - 4 months)	3184	2942	3127	3302	3306	3270	3145	3515
121 - 240 days (5 - 8 months)	1675	1688	1643	1704	1885	2095	1923	1692
241 - 360 days (9 - 12 months)	965	1144	1063	997	1031	1374	1283	1175
361 - 540 days (13 - 18 months)	726	590	567	556	531	669	664	658
541 - 720 days (19 - 24 months)	183	185	146	129	180	190	173	163
> 720 days (> 24 months)	118	142	140	115	111	154	149	135
Asbestos Cases (civil) ⁽¹⁾ : # of Cases	60	56	55	50	58	46	42	39
Age (days)								
Median (50 percentile)	271	332	304	353	339	235	249	330
95 percentile	1002	791	690	847	939	1013	652	652
# of Cases in Age Interval								
0 - 120 days (0 - 4 months)	18	6	9	10	17	8	7	2
121 - 240 days (5 - 8 months)	9	17	5	5	9	17	12	7
241 - 360 days (9 - 12 months)	10	8	16	15	3	8	13	16
361 - 540 days (13 - 18 months)	16	16	11	9	17	4	5	12
541 - 720 days (19 - 24 months)	3	5	9	4	4	6	4	2
> 720 days (> 24 months)	4	4	5	7	8	3	1	0
Domestic: # of Cases	4562	4234	4336	4416	4465	4337	4386	4497
Age (days)								
Median (50 percentile)	115	128	120	114	116	129	123	113
95 percentile	563	623	359	601	559	691	773	713
# of Cases in Age Interval								
0 - 120 days (0 - 4 months)	2347	2020	2187	2307	2272	2041	2149	2342
121 - 240 days (5 - 8 months)	1228	1175	1133	1088	1185	1155	1132	1023
241 - 360 days (9 - 12 months)	529	604	589	571	551	641	584	561
361 - 540 days (13 - 18 months)	221	196	177	202	226	227	212	262
> 540 days (> 18 months)	237	239	250	248	231	273	309	309
Probate: # of Cases	581	580	624	703	715	684	808	814
Age (days)								
Median (50 percentile)	276	297	332	338	393	377	343	387
95 percentile	932	1084	1025	1192	1277	1362	1418	1507
# of Cases in Age Interval								
0 - 120 days (0 - 4 months)	139	149	161	181	160	150	204	172
121 - 240 days (5 - 8 months)	124	103	86	104	118	109	108	132
241 - 360 days (9 - 12 months)	59	86	81	82	72	81	109	81
361 - 540 days (13 - 18 months)	93	67	85	107	86	68	89	106
> 540 days (> 18 months)	166	175	211	229	279	276	298	323

Reflecting all documents received by 07/15/2017.

Table 5 (cont.). Age of Pending Cases

King County Superior Court

Reporting Category	Age of Pending Cases and # of Cases in Each Age Interval							
	Q3/15	Q4/15	Q1/16	Q2/16	Q3/16	Q4/16	Q1/17	Q2/17*
Guardianship: # of Cases	305	311	336	341	337	329	330	351
Age (days)								
Median (50 percentile)	65	70	67	78	81	83	86	86
95 percentile	541	409	364	456	506	510	498	487
# of Cases in Age Interval								
0 - 120 days (0 - 4 months)	198	215	222	217	214	189	189	211
121 - 240 days (5 - 8 months)	56	45	48	60	54	74	65	62
241 - 360 days (9 - 12 months)	18	31	32	27	35	28	39	37
361 - 540 days (13 - 18 months)	17	11	24	28	19	23	26	28
> 540 days (> 18 months)	16	9	10	9	15	15	11	13
Adoption: # of Cases	163	147	163	166	163	135	182	170
Age (days)								
Median (50 percentile)	133	155	101	112	106	116	88	110
95 percentile	938	1123	515	735	492	600	471	562
# of Cases in Age Interval								
0 - 120 days (0 - 4 months)	76	67	93	85	91	68	110	88
121 - 240 days (5 - 8 months)	40	24	21	37	34	31	31	36
241 - 360 days (9 - 12 months)	16	23	17	15	22	14	20	18
361 - 540 days (13 - 18 months)	12	13	17	13	11	14	16	18
> 540 days (> 18 months)	19	20	15	16	5	8	5	10
Paternity: # of Cases	293	310	278	261	232	253	260	266
Age (days)								
Median (50 percentile)	99	102	102	105	117	89	106	91
95 percentile	301	301	256	345	403	324	388	388
# of Cases in Age Interval								
0 - 120 days (0 - 4 months)	179	173	157	143	122	149	143	166
121 - 240 days (5 - 8 months)	89	95	86	77	71	70	75	56
241 - 360 days (9 - 12 months)	17	32	27	31	22	23	26	27
361 - 540 days (13 - 18 months)	8	10	7	8	14	9	12	15
> 540 days (> 18 months)	0	0	1	2	3	2	4	2
ITA (civil commitment): # of Cases	122	90	95	118	82	60	78	148
Age (days)								
Median (50 percentile)	23	10	9	25	5	12	5	8
95 percentile	686	168	182	350	442	545	547	103
# of Cases in Age Interval								
0 - 120 days (0 - 4 months)	106	76	85	100	70	47	74	141
121 - 240 days (5 - 8 months)	4	11	3	8	0	6	0	3
> 240 days (> 8 months)	12	3	7	10	12	7	4	4
Juv Dependency (DEP): # of Cases	394	474	506	504	289	300	345	353
Age (days)								
Median (50 percentile)	106	90	137	170	82	89	73	94
95 percentile	517	562	455	690	382	376	366	400
# of Cases in Age Interval								
0 - 60 days (0 - 2 months)	122	180	131	114	119	125	142	125
61 - 120 days (3 - 4 months)	99	110	105	72	71	71	80	95
121 - 180 days (5 - 6 months)	65	49	82	78	42	51	39	59
181 - 270 days (7 - 9 months)	35	56	71	79	23	28	48	26
> 270 days (> 9 months)	73	79	117	161	34	25	36	48
Juv Termination (TER): # of Cases	194	164	148	181	128	128	148	175
Age (days)								
Median (50 percentile)	188	175	214	156	152	177	106	103
95 percentile	504	539	589	680	645	527	617	603
# of Cases in Age Interval								
0 - 60 days (0 - 2 months)	49	27	21	48	23	20	55	57
61 - 120 days (3 - 4 months)	36	27	19	33	29	34	21	43
121 - 180 days (5 - 6 months)	11	31	17	17	25	14	17	16
181 - 270 days (7 - 9 months)	24	20	35	21	14	30	10	15
> 270 days (> 9 months)	74	59	56	62	37	30	45	44

* Reflecting all documents received by 07/15/2017.

Table 5 (cont.). Age of Pending Cases

King County Superior Court

Reporting Category	Age of Pending Cases and # of Cases in Each Age Interval							
	Q3/15	Q4/15	Q1/16	Q2/16	Q3/16	Q4/16	Q1/17	Q2/17*
Juv. ARY/CHINS/OTHER: # of Cases	87	111	118	136	98	86	103	120
Age (days)								
Median (50 percentile)	353	207	218	225	169	149	158	169
95 percentile	3390	3482	2850	3630	3813	3905	3938	4012
# of Cases in Age Interval								
0 - 60 days (0 - 2 months)	20	23	26	37	25	23	30	30
61 - 120 days (3 - 4 months)	7	20	14	16	14	13	18	13
121 - 180 days (5 - 6 months)	9	11	14	10	16	14	10	24
181 - 270 days (7 - 9 months)	3	7	14	13	6	6	12	8
> 270 days (> 9 months)	48	50	50	60	37	30	33	45
Juvenile Truancy: # of Cases	1202	1329	1397	1430	1374	1237	1389	1513
Age (days)								
Median (50 percentile)	222	274	143	158	236	290	213	157
95 percentile	1245	1324	470	899	1017	1334	1199	1139
# of Cases in Age Interval								
0 - 60 days (0 - 2 months)	6	277	380	177	74	173	369	276
61 - 120 days (3 - 4 months)	33	115	216	335	47	78	195	315
121 - 180 days (5 - 6 months)	279	9	242	281	296	85	125	249
181 - 270 days (7 - 9 months)	485	253	11	261	430	228	60	173
> 270 days (> 9 months)	399	675	548	376	527	673	640	500
Juvenile Offender: # of Cases	614	581	571	538	504	441	430	488
Age (days)								
Median (50 percentile)	97	120	118	98	92	98	91	85
95 percentile	449	507	435	596	689	628	646	745
# of Cases in Age Interval								
0 - 60 days (0 - 2 months)	216	162	177	201	176	142	166	189
61 - 120 days (3 - 4 months)	145	129	113	99	109	106	84	109
121 - 180 days (5 - 6 months)	93	93	71	63	65	66	56	51
181 - 270 days (7 - 9 months)	77	87	75	44	44	45	43	38
> 270 days (> 9 months)	83	110	135	131	110	82	81	101
Criminal RALJ: # of Cases	154	156	146	131	107	107	108	129
Age (days)								
Median (50 percentile)	136	171	169	198	227	208	183	115
95 percentile	581	673	364	506	656	639	694	718
# of Cases in Age Interval								
0 - 60 days (0 - 2 months)	34	28	27	16	8	17	23	36
61 - 120 days (3 - 4 months)	32	20	23	21	17	16	6	31
121 - 180 days (5 - 6 months)	33	40	24	21	10	11	25	7
181 - 270 days (7 - 9 months)	25	42	37	27	27	20	12	17
> 270 days (> 9 months)	30	26	35	46	45	43	42	38
Civil RALJ: # of Cases	24	33	32	36	32	31	26	31
Age (days)								
Median (50 percentile)	110	93	106	108	84	96	100	67
95 percentile	248	304	339	476	522	262	228	270
# of Cases in Age Interval								
0 - 60 days (0 - 2 months)	6	13	9	9	11	9	8	15
61 - 120 days (3 - 4 months)	7	7	9	14	12	11	11	5
121 - 180 days (5 - 6 months)	7	5	7	6	5	6	4	6
181 - 270 days (7 - 9 months)	3	5	3	3	1	4	3	4
> 270 days (> 9 months)	1	3	4	4	3	1	0	1

* Reflecting all documents received by 07/15/2017.

Table 6. Seattle vs. Regional Justice Center (KNT): Filing, Resolution, Pending Caseload (%)

King County Superior Court

	Q2/16		Q3/16		Q4/16		Q1/17		Q2/17	
	SEA	KNT	SEA	KNT	SEA	KNT	SEA	KNT	SEA	KNT
Filings Total <i>(excl. filings with clerk)</i>	63%	37%	65%	35%	63%	37%	64%	36%	64%	36%
Criminal (excl. RALJ)	56%	44%	56%	44%	54%	46%	54%	46%	56%	44%
General Civil (excl. RALJ)	55%	45%	56%	44%	55%	45%	57%	43%	57%	43%
Domestic	59%	41%	61%	39%	60%	40%	60%	40%	58%	42%
Probate	78%	22%	75%	25%	75%	25%	75%	25%	77%	23%
Guardianship	61%	39%	61%	39%	61%	39%	58%	42%	64%	36%
Adoption	67%	33%	75%	25%	76%	24%	72%	28%	76%	24%
Paternity	52%	48%	56%	44%	41%	59%	52%	48%	46%	54%
ITA (civil commitment)	100%	---	100%	---	100%	---	100%	---	100%	---
Juv. Dependency (DEP)	47%	53%	69%	31%	64%	36%	72%	28%	66%	34%
Juv. Termination (TER)	60%	40%	73%	27%	52%	48%	49%	51%	70%	30%
Juvenile ARY/CHINS/Other	45%	55%	53%	47%	49%	51%	35%	65%	56%	44%
Juvenile Truancy	44%	56%	85%	15%	38%	62%	45%	55%	36%	64%
Juvenile Offender	100%	---	100%	---	100%	---	100%	---	100%	---
Criminal RALJ	96%	4%	71%	29%	100%	---	96%	4%	98%	2%
Civil RALJ	75%	25%	80%	20%	93%	7%	86%	14%	79%	21%
Resolution Total <i>(excl. filings with clerk)</i>	63%	37%	63%	37%	64%	36%	64%	36%	65%	35%
Criminal (excl. RALJ)	53%	47%	56%	44%	57%	43%	58%	42%	55%	45%
General Civil (excl. RALJ)	54%	46%	54%	46%	56%	44%	57%	43%	58%	42%
Domestic	60%	40%	60%	40%	62%	38%	60%	40%	60%	40%
Probate	78%	22%	76%	24%	74%	26%	75%	25%	77%	23%
Guardianship	63%	37%	57%	43%	64%	36%	63%	37%	65%	35%
Adoption	70%	30%	72%	28%	82%	18%	70%	30%	75%	25%
Paternity	26%	74%	61%	39%	52%	48%	45%	55%	49%	51%
ITA (civil commitment)	100%	---	100%	---	100%	---	100%	---	100%	---
Juv. Dependency (DEP)	48%	52%	46%	54%	70%	30%	71%	29%	68%	32%
Juv. Termination (TER)	48%	52%	54%	46%	78%	22%	54%	46%	64%	36%
Juvenile ARY/CHINS/Other	38%	62%	60%	40%	56%	44%	46%	54%	44%	56%
Juvenile Truancy	48%	52%	38%	62%	53%	47%	39%	61%	42%	58%
Juvenile Offender	100%	---	100%	---	100%	---	100%	---	100%	---
Criminal RALJ	90%	10%	98%	2%	97%	3%	93%	7%	94%	6%
Civil RALJ	75%	25%	79%	21%	94%	6%	84%	16%	93%	7%
Pending Total <i>(excl. filings with clerk)</i>	63%	37%	65%	35%	64%	36%	63%	37%	62%	38%
Criminal (excl. RALJ)	58%	42%	59%	41%	58%	42%	56%	46%	57%	43%
General Civil (excl. RALJ)	68%	32%	68%	32%	67%	33%	68%	32%	66%	34%
Domestic	60%	40%	60%	40%	60%	40%	59%	41%	58%	42%
Probate	79%	21%	77%	23%	79%	21%	79%	21%	78%	22%
Guardianship	59%	41%	62%	38%	60%	40%	57%	43%	57%	43%
Adoption	74%	26%	76%	24%	66%	34%	69%	31%	70%	30%
Paternity	62%	38%	58%	42%	49%	51%	51%	49%	50%	50%
ITA (civil commitment)	100%	---	100%	---	100%	---	100%	---	100%	---
Juv. Dependency (DEP)	37%	63%	61%	39%	64%	36%	65%	35%	64%	36%
Juv. Termination (TER)	59%	41%	68%	32%	65%	35%	61%	39%	64%	36%
Juvenile ARY/CHINS/Other	62%	38%	63%	37%	64%	36%	53%	47%	58%	42%
Juvenile Truancy	47%	53%	50%	50%	47%	53%	49%	51%	47%	53%
Juvenile Offender	100%	---	100%	---	100%	---	100%	---	100%	---
Criminal RALJ	95%	5%	91%	9%	91%	9%	92%	8%	94%	6%
Civil RALJ	75%	25%	78%	22%	87%	13%	89%	11%	81%	19%

Reflecting all documents received by 07/15/2017.

Table 7. Quarterly Utilization of Pro Tem Judges/Commissioners ⁽¹⁾

Category	Q1/15	Q2/15	Q3/15	Q4/15	Q1/16	Q2/16	Q3/16	Q4/16	Q1/17	Q2/17*
Grand Total	797	1226	1054	1733	769	1157	859	1732	924	1567
Judge FTE Equivalent ⁽³⁾	1.8	2.7	2.3	3.9	1.7	2.6	1.9	3.8	2.1	3.5
By Work Type										
Pro Tem Judge	70	97	130	236	99	191	134	436	166	322
Pro Tem Commissioner	709	1117	925	1497	679	966	725	1256	759	1245
Unspecified	17	13	0	0	0	0	0	41	0	0
By Location										
KCCCH	317	454	346	882	420	394	346	840	344	604
MRJC	193	273	326	501	193	239	214	389	262	463
Juvenile	237	312	260	234	123	405	201	367	208	411
ITA	33	174	122	117	33	119	98	137	111	89
Other	17	13	0	0	0	0	0	0	7	0
By Calendar Type										
Criminal	13	51	112	185	70	50	55	130	36	68
Civil	0	0	0	0	3	0	0	0	0	0
Ex Parte	102	219	100	264	64	134	95	111	56	305
Family Law/Domestic	396	453	461	929	470	421	397	743	415	615
Dependency	183	225	240	172	81	251	120	250	150	236
Juvenile Offender	47	45	18	51	27	125	69	108	31	145
BECCA	7	42	3	11	16	29	13	10	26	30
ITA	33	174	122	117	33	119	98	137	111	89
Juvenile Drug Court	0	0	0	0	0	0	0	0	0	0
Family Treatment Court	0	0	0	0	0	0	0	0	0	0
Plea Calendar	0	0	0	0	0	4	11	157	79	67
Status/Non-Compliance	0	4	0	0	7	16	2	5	0	0
Other or Unspecified	17	13	0	0	0	9	0	82	20	12
By Reason										
Vacation Backfill	396	527	673	818	397	582	499	783	365	628
Medical Backfill	147	156	168	294	211	213	223	302	159	184
Duty Time	211	244	132	288	134	189	89	166	208	437
Conference Coverage	0	257	0	59	0	134	24	0	0	0
Congestion	8	30	69	126	23	29	14	235	99	318
Vacancy Coverage	0	0	0	5	4	0	0	185	84	0
Other	35	13	12	145	0	11	10	61	10	0

(1) This table is based on the time sheet for compensation

(2) Judge FTE Equivalent = # of hours / [7.5 hours/day * 20 days/month * 3 months] = # of hours/450.

Data for the most current quarter are incomplete at reporting time and will be updated in next quarterly report.

The statistics on Pro Tem judge/commissioner use provide information on the external help the court has obtained in order to handle the workload. The data are collected on the time sheet for compensation (therefore it does not include unpaid volunteering or visiting judges/commissioners). The database on Pro Tem judges/commissioners is managed by the Administrative Services Department (ASD) of King County Superior Court. The Pro Tem total hours presented in this section are provided quarterly by ASD.

Table 8. Family Law Activity

	4TH QTR, 2015		1ST QTR, 2016		2ND QTR, 2016		3RD QTR, 2016		4TH QTR, 2016		1ST QTR, 2017		2ND QTR, 2017	
	HRGS	ORDS	HRGS	ORDS	HRGS	ORDS	HRGS	ORDS	HRGS	ORDS	HRGS	ORDS	HRGS	ORDS
SEATTLE														
FAM.LAW	510	1665	451	1673	483	1643	465	1546	430	1506	447	1553	435	1483
DAILY AVG.	8	27	7	27	8	27	8	25	7	25	7	25	7	24
PATERNITY	117	923	103	909	67	752	76	840	94	752	71	792	48	665
DAILY AVG.	2	15	2	15	1	12	1	14	2	12	1	13	1	11
DOM. VIOL.	229	643	232	666	236	666	225	707	239	653	229	576	224	627
DAILY AVG.	4	11	4	11	4	11	4	12	4	11	4	9	4	10
	4TH QTR, 2015		1ST QTR, 2016		2ND QTR, 2016		3RD QTR, 2016		4TH QTR, 2016		1ST QTR, 2017		2ND QTR, 2017	
	HRGS	HRGS	HRGS	ORDS	HRGS	ORDS	HRGS	ORDS	HRGS	ORDS	HRGS	ORDS	HRGS	ORDS
KENT														
FAM.LAW	403	1362	372	1309	368	1304	339	1268	361	1133	299	1209	334	1213
DAILY AVG.	7	22	6	21	6	21	6	21	6	19	5	20	5	20
PATERNITY	54	734	72	763	46	697	59	622	63	515	61	699	57	685
DAILY AVG.	1	12	1	13	1	11	1	10	1	8	1	11	1	11
DOM. VIOL.	356	749	338	719	323	823	334	826	302	807	275	699	328	818
DAILY AVG.	6	12	6	12	5	13	5	14	5	13	5	11	5	13
	4TH QTR, 2015		1ST QTR, 2016		2ND QTR, 2016		3RD QTR, 2016		4TH QTR, 2016		1ST QTR, 2017		2ND QTR, 2017	
	HRGS	ORDS	HRGS	ORDS	HRGS	ORDS	HRGS	ORDS	HRGS	ORDS	HRGS	ORDS	HRGS	ORDS
SEA/KNT														
TOTAL	1669	6076	1568	6039	1523	5885	1498	5809	1489	5366	1382	5528	1426	5491
DAILY AVG.	27	100	26	99	25	96	25	95	24	88	23	91	23	90

The statistics on family law and Ex Parte activity are obtained directly from SCOMIS using the appropriate docket codes.

Table 9. Ex Parte Activity

	2ND QTR, 2016		3RD QTR, 2016		4TH QTR, 2016		1ST QTR, 2017		2ND QTR, 2017	
	HRGS	ORDS	HRGS	ORDS	HRGS	ORDS	HRGS	ORDS	HRGS	ORDS
SEATTLE										
ADOP/PAT	65	282	65	289	87	294	56	231	99	303
DOM. VIOL.	8	405	4	429	7	344	8	419	4	356
OTH. CIVIL	281	609	317	622	259	534	251	640	316	604
DOMESTIC	401	1845	375	1688	400	1785	362	1722	399	1784
PROB/GDN	1345	2781	1203	2445	1143	2367	853	2682	711	2301
SUBTOTAL	2100	5922	1964	5473	1896	5324	1530	5694	1529	5348
DAILY AVG.	34	97	32	90	31	87	25	93	25	88
SEATTLE MAIL-IN										
ADOP/PAT	----	0	----	0	----	0	----	0	----	0
DOM. VIOL.	----	1	----	0	----	2	----	0	----	0
OTH. CIVIL	----	300	----	170	----	169	----	112	----	124
DOMESTIC	----	27	----	22	----	24	----	23	----	17
PROB/GDN	----	97	----	89	----	76	----	87	----	72
SUBTOTAL	----	425	----	281	----	271	----	222	----	213
DAILY AVG.	----	7	----	5	----	4	----	4	----	3
KENT										
ADOP/PAT	35	108	32	95	29	76	25	97	45	147
DOM. VIOL.	2	582	1	612	3	483	4	557	6	528
OTH. CIVIL	299	550	326	579	293	541	319	573	310	499
DOMESTIC	375	1251	398	1348	377	1296	384	1277	388	1372
PROB/GDN	471	816	473	760	423	728	455	807	453	690
SUBTOTAL	1182	3307	1230	3394	1125	3124	1187	3311	1202	3236
DAILY AVG.	19	54	20	56	18	51	19	54	20	53
KENT MAIL-IN										
ADOP/PAT	----	0	----	0	----	1	----	1	----	1
DOM. VIOL.	----	0	----	0	----	0	----	0	----	0
OTH. CIVIL	----	68	----	43	----	30	----	17	----	24
DOMESTIC	----	21	----	11	----	10	----	8	----	3
PROB/GDN	----	34	----	32	----	28	----	34	----	27
SUBTOTAL	----	123	----	86	----	69	----	60	----	55
DAILY AVG.	----	2	----	1	----	1	----	1	----	1
ALL SEA AND KENT										
TOTAL	3282	9778	3194	9235	3021	8789	2717	9288	2731	8853
AVERAGE	54	160	52	151	50	144	45	152	45	145

Note: Statistical report on Ex Parte via Clerk commenced in January 2009 and discontinued in 2016 when technology in E-filing allows orders being electronically signed by judicial officers without a department designation.

Appendix Glossary and Definition

General Definition

Active Status

A case is active if it is not on suspense status (see Suspense Status).

Case

A case is defined as a filing with an assigned case number (or a case number plus a defendant connection code in pre-1990 criminal filings).

Completion

A case is completed when dispositive document is filed with the court following resolution.

Jury Trial

A hearing is reported as a jury trial if the jury is impaneled.

New Case

A new case is an original filing with new case number assigned.

Non-Jury Trial

A hearing is reported as a non-jury trial if an opening statement is made, waived, or reserved. A juvenile fact finding hearings is reported as a non-jury trial.

Pending Case

A case is defined as pending if it is unresolved and active (not in suspense).

Reactivated Case

A case returns to active status from suspense status during the reporting period.

Re-opened Cases

A case is re-opened if it has been previously completed but returns to the court for supplement or change of the original case resolution. A re-opened case does not have a new case number. Only resolved cases can be "re-opened". (Note: measurement not available as of July 1996. SCOMIS capacity may exist after conversion to DB2 in the future).

Resolution

A case is resolved if all issues in the complaint are fully adjudicated.

Suspended Case

A case is placed in suspense status from active status during the reporting period.

Suspense Status

A case is on suspense status if it is on warrant, appeal, stay, mediation, arbitration ("Deferred Prosecution" is not a suspense status, but is treated as a resolution).

Trial

A hearing set before a judge or jury in which all the issues in the case are meant to be resolved. A trial normally includes opening statements to the court or jury stating what the evidence will show, introduction of witnesses and exhibits for direct and cross examination, final arguments to the court or jury in which counsel argue both the evidence and the law, and judgment by the court or jury stating what the facts of the case are and what law applies to the facts. In a jury case, it also includes the selection of the jury. A trial can be held

for one or more cases. A single trial may be held to adjudicate more than one case (as defined above).

Post-resolution Modifications

In this report, we also report the post-resolution modifications for case type 3 (domestic) and 5 (paternity). These numbers are based on the tracks (DMOD and DTBA) opened after the original resolution date (i.e., if the track beginning date is after the resolution date).

Section I. Filing Activity

Additional Filings with Clerk

Filings with clerk without assigning a SCOMIS case number. This reporting category consists of search warrants, wire taps, extradition, oaths and orders pertaining to Pro Tem judge/commissioners/Court

Reporters/Bailiffs, and other "non-case" filings as recorded under 12050 system.

Annual Filings

Total number of new case filings during the calendar year (January 1 to December 31).

Adoption Cases

This reporting category includes the following "cause-of-action" codes within SCOMIS case type 5:

- Relinquishment (REL)
- Termination of Parent/Child Relationship (TER)
- Adoption (ADP)
- Miscellaneous (MSC)
- Name Change - Confidential (CHN)
- Initial Pre-Placement Report Filed with Clerk (PPR)

General Civil Cases

"General Civil" cases include all civil matters other than Domestic, Probate, Guardianship, Adoption, Paternity and appeals from courts of limited jurisdiction and "Matters Filed with Clerk". "General Civil" cases include small claims as identified by the "Small Claim Track". This reporting category includes the following "cause-of-action" codes within SCOMIS case type 2:

- Administrative Law Review (ALR)
- Change of Name - Non-Confidential (CHN)
- Collection (COL)
- Commercial (COM)
- Condemnation (CON)
- Domestic Violence Protection (DVP)
- Emancipation of Minor (EOM)
- Foreclosure (FOR)
- Civil Harassment (HAR)
- Injunction (INJ)
- Other Malpractice (MAL)
- Medical Malpractice (MED)
- Meretricious Relationship (MER)
- Malicious Harassment (MHA)
- Miscellaneous (MSC)
- Minor Settlement (MST) - as of 10/1/96, under Guardianship
- Petition of Civil Commitment- Sexual Predator (PCC)
- Property Fairness (PFA)
- Personal Injury (PIN)

- Property Damage (PRP)
- Quiet Title (QTI)
- Small Claims (LCA/LCI on “Small Claim Track”)
- Seizure of Property from the Commission of a Crime (SPC)
- Seizure of Property Resulting from a Crime (SPR)
- Tort Motor Vehicle (TMV)
- Tort Other (TTO)
- Unlawful Detainer (UND)
- Wrongful Death (WDE)
- Writ of Habeas Corpus (WHC)
- Miscellaneous Writ (WMW)
- Writ of Mandamus (WRM)
- Writ of Restitution (WRR)
- Writ of Review (WRV)

Civil RALJ Cases

Civil appeals from courts of limited jurisdiction (excluding small claims as identified by the “Small Claim Track”). Civil RALJ includes the following “cause-of-action” reporting categories:

- Lower Court Appeal - Civil and “Not a Small Claim”
- Lower Court Appeal - Infraction and “Not a Small Claim”

Note: The Civil RALJ cases are determined based on both SCOMIS “cause-of-action” code (LCA and LCI) within SCOMIS case type 2 and the “Small Claim Track”.

Criminal Cases (excl. RALJ)

Adult criminal cases, excluding appeals from courts of limited jurisdiction. This reporting category includes the following crime categories within SCOMIS case type 1:

- Homicide
- Sex Crime
- Robbery
- Assault
- Theft/Burglary
- Motor Vehicle Theft
- Controlled Substance
- Other Felony
- Others (Misdemeanor, Non-charge Case)

Criminal RALJ Cases

Criminal appeals from courts of limited jurisdiction. This reporting category includes all SCOMIS case type 1 cases that have an appeal from lower court field of “Yes”.

Domestic Cases

This reporting category includes the following “cause-of-action” codes within SCOMIS case type 3:

- Annulment – Invalidity (INV)
- Child Custody (CUS)
- Dissolution With Children Of The Marriage (DIC)
- Dissolution With No Children Of The Marriage (DIN)
- Dissolution of Domestic Partnership – With Children (DPC)
- Dissolution of Domestic Partnership – With No Children (DPN)
- Foreign Judgment (FJU)
- Invalidity – Domestic Partnership (INP)
- Mandatory Wage Assignment (MWA)
- Miscellaneous (MSC)
- Modification (MOD)
- Modification – Support Only (MDS)
- Out-Of-State Child Custody (OSC)
- Parenting Plan / Child Support (PPS)
- Reciprocal, Respondent In-County (RIC)
- Reciprocal, Respondent Out-of-County (ROC)
- Legal Separation (SEP)
- Legal Separation – Domestic Partnership (SPD)

Guardianship Cases

This reporting category includes the following “cause-of-action” codes within SCOMIS case type 4:

- Guardianship/Estate (G/E)
- Guardianship (GND)
- Limited Guardianship (LGD)
- Minor Settlement (MST)

Juvenile ARY/CHINS Cases

Juvenile dependency cases, excluding truancy cases and DEP cause code. This reporting category includes following “cause-of-action” codes within SCOMIS case type 7:

- Alternative Residential Placement (ARP)
- At-Risk Youth (ARY)
- Child in Need of Service (CNS)

Juvenile Dependency Cases

This reporting category includes following “cause-of-action” codes within SCOMIS case type 7:

- Dependency (DEP)
- Termination (TER)
- Developmental Disability (DDP)
- Guardianship Foster Children (GFC)
- Reinstatement of Parental Rights (RPR)
- Extension of Foster Care (EFC)
- Relative Visitation (RVS)

Juvenile Offender Cases

This reporting category includes the following crime categories in SCOMIS case type 8:

- Homicide
- Sex Crime
- Robbery
- Assault
- Theft/Burglary
- Motor Vehicle Theft
- Controlled Substance
- Other Felony
- Others (Misdemeanor, Non-charge Case)

Juvenile Truancy Cases

Mandatory truancy filings started on 10/01/1995. This reporting category includes the following “cause-of-action” code within SCOMIS case type 7:

- Truancy (TRU)

Matters Filed with Clerk

Filings with clerk (case numbers assigned), but requiring little or no judicial action. This reporting category includes the following “cause-of-action” codes within SCOMIS case type 2:

- Abstract of Judgment (ABJ)
- Foreign Judgment (FJU)
- Tax Warrant (TAX)
- Transcripts of Judgment (TRJ)

ITA (civil commitment) Cases

This reporting category includes all “cause-of-action” codes within SCOMIS case type 6:

- Alcoholic Treatment (ALT)
- Mental Illness - Adult (MI)
- Mental Illness - Juvenile (MIJ)
- Mental Illness - Family (MIF)

Paternity Cases

This reporting category includes the following “cause-of-action” codes within SCOMIS case type 5:

- Modification (MOD)
- Paternity (PAT)
- Paternity/URES/UFSA (PUR)

Probate Cases

This reporting category includes the following “cause-of-action” codes within SCOMIS case type 4:

- Absentee (ABS)
- Disclaimer (DSC)
- Estate (EST)
- Foreign Will (FNW)
- Miscellaneous (MSC)
- Non-Probate Notice to Creditors (NNC)
- Will Only (WLL)

Total Cases

New cases with case numbers assigned, excluding “Matters Filed with Clerk” and “Additional Filings with Clerk”.

Year-to-Date Filings

Total number of new filings since the beginning of calendar year (January 1) to the end of reporting period.

Section II. Resolution Category

Adoption - Resolved by Trial

Court Decision after Non-Jury Trial (CDAT)

Adoption - Uncontested

Consolidated Case (CONS)
Uncontested Resolution (UNDS)

Adoption - Settlement/Dismissal

Closed by Court Order after a Hearing (CLCO)
Dismissal without Trial (DSM)
Dismissal after Non-Jury Trial Commencement (DAT)
Settled after Non-Jury Trial Commencement (SAT)
Settled by Parties/Agreed Judgment (STPR)

Adoption - Closure by Clerk

Dismissal/Closure by Clerk (DSCK)

Adoption - Others

Change of Venue/Jurisdiction (CHV)
Other Non-specified Resolutions

Civil - Resolved by Jury Trial

Jury Verdict after Trial (JVAT)

Civil - Resolved by Non-Jury Trial

Court Decision after Non-Jury Trial (CDAT)

Civil - Summary Judgment

Summary Judgment (SMJG)

Civil - Default/Uncontested

Consolidated Case (CONS)
Default Judgment (DFJG)
Uncontested Resolution (UNDS)

Civil - Arbitration

Settle by Arbitration (ARBA)

Civil - Settlement/Dismissal

Closed by Court Order after a Hearing (CLCO)
Dismissal after Non-Jury Trial (DAT)
Dismissal after Jury Trial (DJT)
Dismissal (DSM)
Settled after Non-Jury Trial Commencement (SAT)
Settled after Jury Trial Commencement (SJT)
Settled by Parties/Agreed Judgment (STPR)

Civil - Closure by Clerk

Dismissal/Closure by Clerk (DSCK)

Civil - Others

Transferred to Federal bankruptcy Court (BANK)
Change of Venue/Jurisdiction (CHV)
Other Non-specified Resolutions

Civil RALJ - RALJ Decision

Court Decision to Affirm Appeal/review (CDTA)
Court Decision to Modify Appeal/Review (CDTM)
Court Decision to Reverse Appeal/review (CDTR)

Civil RALJ - Dismissal

Dismissal and Remand of Appeal/Review (DSRM)

Civil RALJ - Others

Other Non-specified Resolutions

Comparison with Court Standard

Percentage of cases actually falling within the Court’s standard benchmark.

Court Standard

Benchmarks set by a state advisory committee and adopted by the court indicating percentage of cases to be resolved at certain age (in months, 1 month = 30 days as used in the Advisory Case Processing Time Standard as published in the Court Rule).

Court standard is based on timelines as suggested by State Advisory Committee. For a case type with no time standard, the standard for a similar case type is adopted if appropriate.

Criminal: 90% by 4 months, 98% by 6 months, 100% by 9 months.

Civil: 90% by 12 months, 98% by 18 months, 100% by 24 months.

Domestic: 90% by 8 months, 98% by 10 months, 100% by 14 months.

Probate/Guardianship: 90% by 8 months, 98% by 18 months, 100% by 36 months.

Adoption/Paternity: 90% by 8 months, 98% by 10 months, 100% by 14 months.

Mental Illness/Juvenile Truancy: No standard yet.

Juvenile Dependency: 90% by 8 months, 98% by 10 months, 100% by 14 months.

Juvenile Offender: 90% by 4 months, 98% by 6 months, 100% by 9 months.

Criminal RALJ/Civil RALJ: 90% by 4 months, 98% by 5 months, 100% by 6 months.

Criminal - Resolved by Jury Trial

Acquittal by Jury (AQJV)
Convicted - Jury Verdict after Trial (CVJV)

Criminal - Resolved by Non-Jury Trial

Acquittal by Court (AQCT)
Convicted - Court Decision after Non-Jury Trial (CVCT)

Criminal - Resolved by Guilty Plea

Guilty Plea (GP)
Guilty Plea after Non-Jury Trial Commencement (GPAT)
Guilty Plea after Jury Trial Commencement (GPJT)

Criminal - Dismissal

Dismissal after Non-Jury Trial Commencement (DAT)
Dismissal after Jury Trial Commencement (DJT)
Dismissal (DSM)

Criminal - Others

Change of Venue (CHV)
Consolidated Case (CONS)
Continued Order of Prosecution with Completion (CTOP)*
Deferred Prosecution (DFPD)
Dismissal/Closure by Clerk (DSCK)
Governor’s warrant (GW)
Not Guilty by Reason of Insanity (NGRI)
Uncontested Resolution (UNDS)
Waiver of Extradition (WE)
Other Non-specified Resolutions

* Note: For adult criminal cases, “CTOP” does not necessarily constitute resolution. An adult criminal case with a “CTOP” as resolution code is counted as a resolved case only if a completion code exists along with the “CTOP”. If the resolution code is CTOP and there is no completion code, then the case is treated as unresolved. The primary reason for combining “CTOP” with a completion code is to determine resolution for drug court cases (CTOP is entered in the SCOMIS resolution field as soon as a defendant enrolls in

Drug Court). This rule on “CTOP” applies to adult criminal cases only.

Criminal RALJ - RALJ Decision

Court Decision to Affirm Appeal/review (CDTA)
Court Decision to Modify Appeal/Review (CDTM)
Court Decision to Reverse Appeal/review (CDTR)

Criminal RALJ - Dismissal

Dismissal and Remand of Appeal/Review (DSRM)

Criminal RALJ - Others

Other Non-specified Resolutions

Domestic - Resolved by Trial

Court Decision after Non-Jury Trial (CDAT)

Domestic - Default/Uncontested

Consolidated Case (CONS)
Default Judgment (DFJG)
Uncontested Resolution (UNDS)

Domestic - Settlement/Dismissal

Settled by Arbitration (ARBA)
Closed by Court Order after a Hearing (CLCO)
Dismissal after Non-Jury Trial Commencement (DAT)
Dismissal (DSM)
Settled after Non-Jury Trial Commencement (SAT)
Settled by Parties/Agreed Judgment (STPR)

Domestic - Closure by Clerk

Dismissal/Closure by Clerk (DSCK)

Domestic - Others

Change of Venue/Jurisdiction (CHV)
Summary Judgment (SMJG)
Other Non-specified Resolutions

Guardianship - Guardian Appointed

Guardian Appointed (PRGA)

Guardianship - Dismissal

Closed by Court Order after a Hearing (CLCO)
Dismissal (DSM)

Guardianship - Closure by Clerk

Dismissal/Closure by Clerk (DSCK)

Guardianship - Others

Change of Venue/Jurisdiction (CHV)
Consolidated Case (CONS)
Uncontested Resolution (UNDS)
Other Non-specified Resolutions

Juvenile Dependency - Finding of Dependency

Approved Petition (APP)

Juvenile Dependency - Dismissal

Dismissal (DSM)

Juvenile Dependency - Others

Change of Venue/Jurisdiction (CHV)
Consolidated Case (CONS)
Transfer of Jurisdiction (TRJU)
Other Non-specified Resolutions

Juvenile Offender - Resolved by Trial

Acquittal by Court (AQCT)
Convicted - Court Decision after Adjudicatory Hearing (CVCT)

Juvenile Offender - Resolved by Guilty Plea

Guilty Plea before Adjudicatory Hearing Commencement (GP)
Guilty Plea after Adjudicatory Hearing Commencement (GPAT)

Juvenile Offender - Dismissal

Dismissal after Adjudicatory Hearing Commencement (DAT)

Dismissal (DSM)

Juvenile Offender - Others

Change of venue (CHV)
Dismissal/Closure by Clerk (DSCK)
Consolidated Case (CONS)

Continued Prosecution (CTOP)

Decline of Jurisdiction (DECL)

Uncontested Resolution (UNDS)

Other Non-specified Resolutions

Juvenile Truancy - Finding of Truancy

Approved Petition (APP)

Juvenile Truancy - Dismissal

Dismissal (DSM)

Juvenile Truancy - Others

Change of Venue (CHV)
Consolidated Case (CONS)
Transfer of Jurisdiction (TRJU)
Other Non-specified Resolutions

ITA - Court Decision to Commit

Court Decision to Commit (CDTC)

ITA - Closed by Court

Closed by Court (CLCO)

ITA - Dismissal

Dismissal (DSM)

ITA - Others

Change of Venue/Jurisdiction (CHV)
Uncontested Resolution (UNDS)
Other Non-specified Resolutions

Paternity - Resolved by Trial

Court Decision after Non-Jury Trial (CDAT)

Paternity - Summary Judgment

Summary Judgment (SMJG)

Paternity - Default/Uncontested

Consolidated Case (CONS)
Default Judgment (DFJG)
Uncontested Resolution (UNDS)

Paternity - Settlement/Dismissal

Settled by Arbitration (ARBA)
Closed by Court Order after a Hearing (CLCO)
Dismissal after Non-Jury Trial Commencement (DAT)
Dismissal (DSM)
Settled after Non-Jury Trial Commencement (SAT)
Settled by Partied/Agreed Judgment (STPR)

Paternity - Closure by Clerk

Dismissal/Closure by Clerk (DSCK)

Paternity - Others

Change of Venue (CHV)
Other Non-specified Resolutions

Percentile

Percent of cases resolved at a given age. For example, if resolved cases had a 98 percentile of 12 months, it means that 98% of the cases were resolved within the age of 12 months, or conversely 2% of the cases were resolved after 12 months, not counting suspense time.

Probate - Personal Representative Appointed

Non-Intervention Probate (NIP)
Personal Representative Appointed (PRGA)

Probate - Dismissal

Closed by Court Order after a Hearing (CLCO)
Dismissal (DSM)

Probate - Closure by Clerk

Dismissal/Closure by Clerk (DSCK)

Probate - Others

Change of Venue (CHV)
Consolidated Case (CONS)
Uncontested Resolution (UNDS)
Other Non-specified Resolutions

Backlogged Cases

Active pending cases with an age exceeding the court-adopted time standard for each specific case type (recommended by the State Advisory Committee, see definition for *Court Standard*).

Section III. Pending Caseload

Adjustment

Adjustment made because of vacating of resolutions, or change in suspense status between two reporting period.

End Pending

Total number of pending cases at the end of reporting period.

Previous Pending

Total number of pending cases at the beginning of reporting period.

Resolution Rate

Resolution rate is defined as the ratio of number of resolutions to number of new filings (i.e., number of resolutions divided by number of new filings) during the reporting period. The resolution rate measures the relative pace of resolution in relation to the pace of new filings. A resolution rate of greater than 1 indicates the number of resolutions exceeds the number of new filings.

On-review Status

Cases that have been resolved (post-resolution) but still need court resources for periodic review and other remaining outstanding issues.

Probate (EST), Paternity (PAT) and Dependency (DEP): Resolved and not completed (paternity or dependency established, but outstanding issues remain).

Guardianship (GDN,LGD,G/E): Resolved and on tracks of G1,G2,G3,GE or GD; Minor Settlement (MST): Resolved with a future hearing date.

Section IV. Age of Pending Cases

Case Age

The age of a case is the time (number of days) since the filing date, less any suspense time if applicable.

Median Age

The median age is the time that 50% of the cases are under and 50% are above the given age. For example, if pending cases have a median age of 12 months, it means that 50% of the pending cases are within the age of 12 months, and 50% of pending cases are over 12 months. The median age is more robust to cases with extreme age values than the average age.

Suspense Time

Time (days) that a case is on suspense status before its resolution. If a case has more than one suspense between filing and resolution, the suspense time is the total from all suspense. Time on suspense status after resolution (e.g., appeals) is not counted.