

King County Superior Court
Quarterly Statistical Report

Third Quarter 2017

Department of Judicial Administration
Prepared by: Shiquan Liao, Ph.D., Statistician

Release Date: October 20, 2017

Report #: QTR-2017-03

Table 1. Year-to-Date Filing Activity

King County Superior Court

Reporting Category	Year-to-Date and Annual Filing Activity ⁽¹⁾					2016-2017 change (+ means "increase")		% of 2017 Total Filing ⁽²⁾
	2013	2014	2015	2016	2017	Cases	Percentage	
Total (incl. RALJ)								
Year-to-Date Filing	40215	39527	39292	39337	40089	+752	+1.9%	
Annual Filing	52755	52224	51652	51472				
Criminal (excl. RALJ)								
Year-to-Date Filing	4445	4642	4839	5021	4893	-128	-2.5%	12.2%
Annual Filing	6045	6213	6237	6632				
General Civil (excl. Asbestos)								
Year-to-Date Filing	17362	16353	15969	16243	16167	-76	-0.5%	40.3%
Annual Filing	22347	21378	21181	21181				
Asbestos Cases (civil) ⁽³⁾								
Year-to-Date Filing	47	30	33	35	13	-22	-62.9%	0.0%
Annual Filing	63	40	36	41				
Domestic								
Year-to-Date Filing	6093	6137	5965	5786	5861	+75	+1.3%	14.6%
Annual Filing	7897	7921	7559	7512				
Probate								
Year-to-Date Filing	4402	4484	4601	4640	4929	+289	+6.2%	12.3%
Annual Filing	5844	5920	6002	6073				
Guardianship								
Year-to-Date Filing	681	718	717	765	702	-63	-8.2%	1.8%
Annual Filing	884	928	969	1008				
Adoption								
Year-to-Date Filing	349	334	345	347	401	+54	+15.6%	1.0%
Annual Filing	483	470	460	458				
Paternity								
Year-to-Date Filing	754	522	486	380	418	+38	+10.0%	1.0%
Annual Filing	931	702	650	528				
ITA – Civil Commitment								
Year-to-Date Filing	2743	2886	3071	3124	3517	+393	+11.2%	8.8%
Annual Filing	3678	3852	4004	4152				
Juvenile Dependency (DEP)								
Year-to-Date Filing	658	727	598	573	595	+22	+3.8%	1.5%
Annual Filing	893	940	848	727				
Juvenile Termination (TER)								
Year-to-Date Filing	161	202	163	173	221	+48	+27.7%	0.6%
Annual Filing	209	325	214	219				
Juvenile ARY/CHINS/OTHERS								
Year-to-Date Filing	142	211	150	178	170	-8	-4.5%	0.4%
Annual Filing	168	285	217	247				
Juvenile Truancy								
Year-to-Date Filing	904	765	975	972	1078	+106	+10.9%	2.7%
Annual Filing	1236	1233	1369	1222				
Juvenile Offender								
Year-to-Date Filing	1306	1357	1300	972	975	+3	+0.3%	2.4%
Annual Filing	1808	1802	1649	1295				
Criminal RALJ								
Year-to-Date Filing	132	122	140	78	102	+24	+30.8%	0.3%
Annual Filing	181	172	180	111				
Civil RALJ								
Year-to-Date Filing	33	33	40	50	47	-3	-6.0%	0.1%
Annual Filing	53	47	57	66				
Matters Filed with Clerk ⁽⁴⁾								
Year-to-Date Filing	10168	9726	7280	6826	8741	+1915	+28.1%	
Annual Filing	13763	12240	9581	8742				

(1) New filings only (based on filing date), excluding re-opened cases (unable to count), and reflecting all documents received by 10/15/2017.

(2) New filings of each reporting category as percentage of "Year-to-Date Filing".

(3) "Matters Filed with Clerk" and "Additional Filings with Clerk" are not included in the "Total".

Chart 1-A. Quarterly Filing Activity
Total Judicial Cases Only ("Matters Filed with Clerk" excluded)

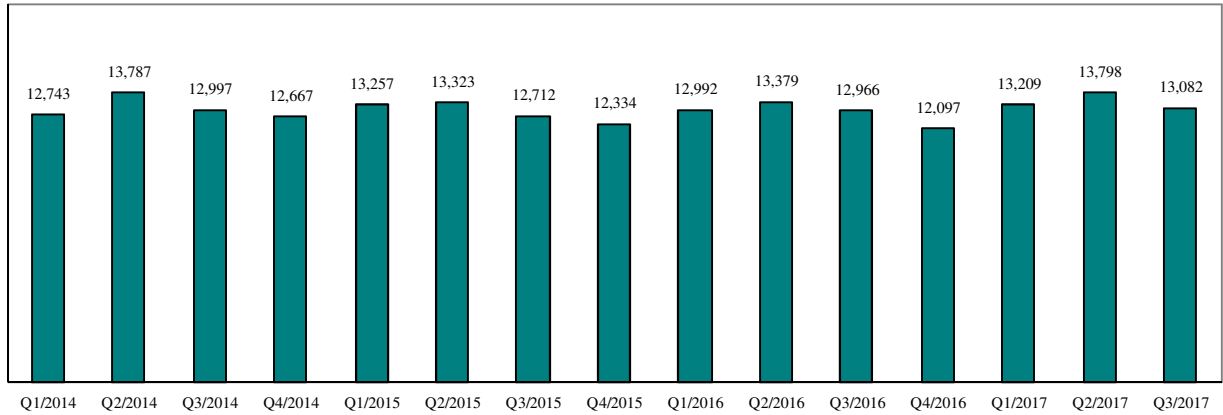
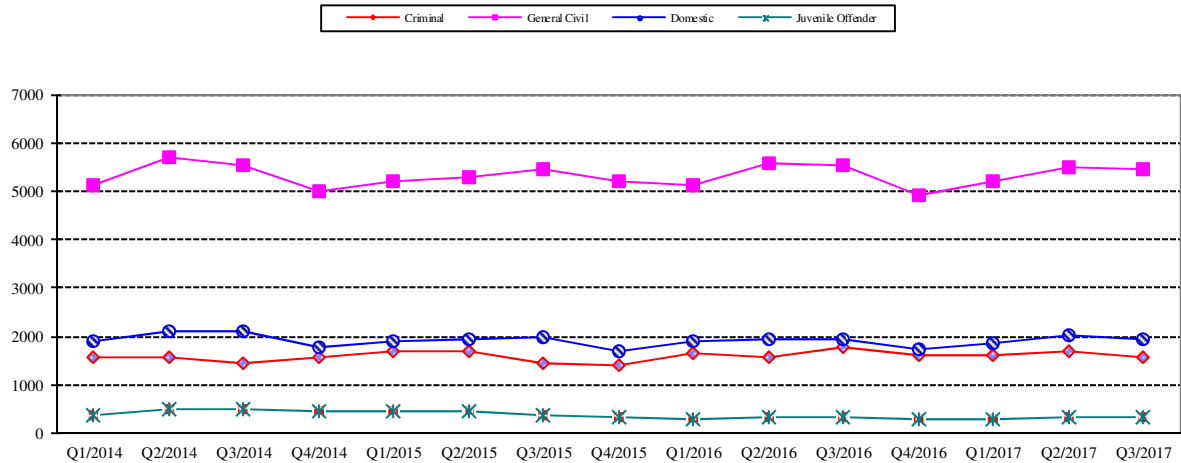


Chart 1-B. Quarterly Filings: Criminal, Domestic, General Civil and Juvenile Offender Cases Only



* Note: "General Civil" is specifically defined in this report. The category of "General Civil" does **not** include the following case types: domestic, probate, guardianship, adoption, paternity, ITA (civil commitment), juvenile cases (dependency, at-risk youth, child-in-need of service, civil RALJ, and tax filings that don't require judicial resources ("matters filed with clerk"). Please check the Appendix for the cause codes in the "General Civil" category.

Table 1-A. Post-Resolution Modifications (Domestic and Paternity Cases)

Based on Tracks Opened After Original Resolution Date

		2015Q1			2015Q2			2015Q3			2015Q4			Year 2015		
Location	Case Type	DMOD	DTBA	Total	DMOD	DTBA	Total	DMOD	DTBA	Total	DMOD	DTBA	Total	DMOD	DTBA	Total
KNT	Domestic	166	37	203	188	49	237	168	31	199	166	32	198	688	149	837
	Paternity	14	4	18	18	8	26	15	3	18	8	6	14	55	21	76
KNT Total		180	41	221	206	57	263	183	34	217	174	38	212	743	170	913
SEA	Domestic	150	56	206	145	85	230	171	44	215	146	49	195	612	234	846
	Paternity	8	8	16	8	7	15	7	8	15	5	4	9	28	27	55
SEA Total		158	64	222	153	92	245	178	52	230	151	53	204	640	261	901
KNT/SEA Total		338	105	443	359	149	508	361	86	447	325	91	416	1383	431	1814
		2016Q1			2016Q2			2016Q3			2016Q4			Year 2016		
Location	Case Type	DMOD	DTBA	Total	DMOD	DTBA	Total	DMOD	DTBA	Total	DMOD	DTBA	Total	DMOD	DTBA	Total
KNT	Domestic	174	29	203	167	56	223	204	32	236	179	34	213	724	151	875
	Paternity	16	6	22	12	6	18	12	3	15	8	4	12	48	19	67
KNT Total		190	35	225	179	62	241	216	35	251	187	38	225	772	170	942
SEA	Domestic	154	71	225	154	76	230	173	51	224	133	65	198	614	263	877
	Paternity	6	9	15	11	8	19	14	7	21	14	2	16	45	26	71
SEA Total		160	80	240	165	84	249	187	58	245	147	67	214	659	289	948
KNT/SEA Total		350	115	465	344	146	490	403	93	496	334	105	439	1431	459	1890
		2017Q1			2017Q2			2017Q3			2017Q4			Year 2017		
Location	Case Type	DMOD	DTBA	Total	DMOD	DTBA	Total	DMOD	DTBA	Total	DMOD	DTBA	Total	DMOD	DTBA	Total
KNT	Domestic	172	30	202	218	57	275	170	23	193				560	110	670
	Paternity	9	5	14	9	6	15	19	2	21				37	13	50
KNT Total		181	35	216	227	63	290	189	25	214				597	123	720
SEA	Domestic	151	54	205	170	86	256	176	53	229				497	193	690
	Paternity	9	3	12	16	8	24	15	1	16				40	12	52
SEA Total		160	57	217	186	94	280	191	54	245				537	205	742
KNT/SEA Total		341	92	433	413	157	570	380	79	459				1134	328	1462

* DMOD = parenting plan modification track; DTBA = support modification track.

Correction for the first two quarters was made in September 2017.

Table 2. Number of Cases Resolved and Resolution Category (%)

King County Superior Court

Reporting Category	Q4/15	Q1/16	Q2/16	Q3/16	Q4/16	Q1/17	Q2/17	Q3/17*
Total Resolutions (excl. "Matters Filed with Clerk")	13206	13113	13387	13274	12665	13067	13367	13411
Criminal (excl. RALJ): # Resolved	1532	1529	1444	1483	1432	1554	1536	1519
Resolved by Jury Trial	3.3%	4.3%	2.3%	2.5%	2.9%	3.3%	3.0%	3.6%
Resolved by Non-Jury Trial	0.5%	1.1%	1.0%	0.9%	0.1%	0.3%	0.5%	0.9%
Resolved by Guilty Plea	80.6%	80.1%	81.1%	80.3%	80.9%	79.5%	78.3%	79.3%
Dismissal	15.3%	13.8%	15.0%	15.5%	15.0%	15.8%	16.5%	15.0%
Others	0.4%	0.2%	0.6%	0.7%	1.1%	1.1%	1.6%	1.3%
General Civil: # Resolved	5853	5435	5872	5628	5301	5516	5608	5673
Resolved by Jury Trial	0.5%	0.6%	0.4%	0.5%	0.6%	0.2%	0.5%	0.5%
Resolved by Non-Jury Trial	0.3%	0.3%	0.4%	0.5%	0.3%	0.6%	0.4%	0.5%
Summary Judgment	1.8%	2.0%	2.0%	1.6%	1.6%	2.1%	2.2%	2.0%
Default/ Uncontested	42.1%	38.1%	40.2%	40.4%	38.3%	38.6%	38.0%	39.2%
Arbitration	2.7%	3.1%	3.3%	2.7%	3.2%	2.9%	3.1%	2.9%
Settlement/Dismissal	48.3%	52.6%	50.6%	49.4%	51.3%	51.9%	53.3%	51.5%
Closure by Clerk	3.6%	2.6%	2.5%	4.3%	3.4%	2.8%	1.5%	2.5%
Others	0.7%	0.8%	0.7%	0.8%	1.3%	1.1%	1.1%	1.0%
Asbestos Cases (civil): # Resolved	10	9	14	8	16	9	7	8
Resolved by Jury Trial	0.0%	11.1%	0.0%	12.5%	0.0%	0.0%	0.0%	0.0%
Resolved by Non-Jury Trial	0.0%	0.0%	0.0%	0.0%	0.0%	0.0%	0.0%	0.0%
Summary Judgment	50.0%	22.2%	0.0%	0.0%	0.0%	0.0%	28.6%	0.0%
Default/ Uncontested	0.0%	0.0%	7.1%	12.5%	6.3%	0.0%	28.6%	0.0%
Arbitration	0.0%	0.0%	0.0%	0.0%	0.0%	0.0%	0.0%	0.0%
Settlement/Dismissal	20.0%	55.6%	85.7%	62.5%	87.5%	66.7%	42.9%	87.5%
Closure by Clerk	30.0%	11.1%	7.1%	12.5%	6.3%	33.3%	0.0%	12.5%
Others	0.0%	0.0%	0.0%	0.0%	0.0%	0.0%	0.0%	0.0%
Domestic: # Resolved	2019	1810	1895	1881	1924	1829	1930	1902
Resolved by Trial	4.4%	4.0%	4.6%	4.8%	3.7%	4.1%	4.2%	3.8%
Default/ Uncontested	10.3%	10.1%	9.8%	10.2%	8.5%	9.4%	9.4%	8.6%
Settlement /Dismissal	84.5%	84.5%	84.3%	84.2%	86.6%	85.8%	84.9%	86.5%
Closure by Clerk	0.6%	0.8%	0.6%	0.4%	0.4%	0.4%	0.4%	0.4%
Others	0.3%	0.6%	0.6%	0.5%	0.7%	0.4%	1.2%	0.7%
Probate: # Resolved	1397	1561	1549	1473	1387	1680	1670	1472
Personal Rep. Appointed	72.8%	72.7%	72.3%	71.6%	70.7%	74.1%	73.4%	72.5%
Dismissal	4.3%	2.6%	2.8%	3.7%	2.7%	1.7%	4.1%	2.6%
Closure by Clerk	0.6%	0.1%	0.0%	0.0%	0.0%	0.0%	0.0%	0.0%
Others	22.3%	24.6%	24.9%	24.7%	26.6%	24.3%	22.6%	24.9%
Guardianship: # Resolved	228	220	258	265	231	232	231	230
Guardian Appointed	54.8%	55.5%	55.8%	47.6%	56.3%	50.9%	47.2%	53.5%
Dismissal	44.7%	43.2%	43.0%	51.7%	42.4%	48.3%	51.1%	45.2%
Closure by Clerk	0.0%	0.0%	0.0%	0.0%	0.0%	0.0%	0.0%	0.0%
Others	0.4%	1.4%	1.2%	0.8%	1.3%	0.9%	1.7%	1.3%
Adoption: # Resolved	131	116	113	104	140	86	145	130
Resolved by Trial	0.8%	0.0%	0.9%	0.0%	0.0%	0.0%	0.0%	0.8%
Uncontested	3.1%	9.5%	6.2%	3.9%	2.1%	3.5%	2.8%	2.3%
Settlement /Dismissal	93.9%	90.5%	92.9%	96.2%	97.9%	96.5%	97.2%	96.2%
Closure by Clerk	0.8%	0.0%	0.0%	0.0%	0.0%	0.0%	0.0%	0.0%
Others	1.5%	0.0%	0.0%	0.0%	0.0%	0.0%	0.0%	0.8%
Paternity: # Resolved	153	171	140	141	121	127	150	158
Resolved by Trial	0.0%	1.2%	2.1%	1.4%	1.7%	0.8%	0.7%	3.8%
Summary Judgment	45.8%	52.1%	39.3%	52.5%	43.8%	52.8%	50.0%	51.3%
Default/ Uncontested	24.2%	17.0%	25.7%	17.7%	20.7%	20.5%	18.7%	17.7%
Settlement/Dismissal	29.4%	29.8%	32.9%	27.7%	33.9%	26.0%	30.7%	27.2%
Closure by Clerk	0.0%	0.0%	0.0%	0.0%	0.0%	0.0%	0.0%	0.0%
Others	0.7%	0.0%	0.0%	0.7%	0.0%	0.0%	0.0%	0.0%

Reflecting all documents received by 10/15/2017.

Table 2 (cont.). Number of Cases Resolved and Resolution Category (%)

King County Superior Court

Reporting Category	Q4/15	Q1/16	Q2/16	Q3/16	Q4/16	Q1/17	Q2/17	Q3/17*
ITA (civil commitment): # Resolved	957	1014	1034	1085	1045	1073	1157	1206
Court Decision to Commit	60.4%	64.2%	65.3%	63.0%	59.3%	60.5%	57.6%	60.0%
Closed by Court	0.0%	0.0%	0.0%	0.0%	0.0%	0.0%	0.0%	0.0%
Dismissal	19.8%	20.6%	21.3%	16.7%	26.1%	24.0%	25.4%	19.6%
Others	19.9%	15.2%	13.4%	20.3%	14.6%	15.6%	17.0%	20.5%
Juv. Dependency: # Resolved	159	172	187	397	140	164	195	216
Finding of Dependency	80.5%	72.9%	81.8%	87.4%	77.9%	78.7%	78.5%	74.5%
Dismissal	19.5%	26.7%	18.2%	12.3%	22.1%	21.3%	21.5%	25.5%
Others	0.0%	1.2%	0.0%	0.3%	0.0%	0.0%	0.0%	0.0%
Juv. Terminations: # Resolved	61	62	48	103	49	50	56	72
Finding of Dependency	77.0%	74.2%	79.2%	95.2%	81.6%	90.0%	80.4%	88.9%
Dismissal	23.0%	25.8%	20.8%	4.8%	18.4%	10.0%	19.6%	11.1%
Others	0.0%	0.0%	0.0%	0.0%	0.0%	0.0%	0.0%	0.0%
Juv. ARY/CHINS/OTHER:# Resolved	36	63	45	93	70	37	41	101
Approve of Petition	52.8%	38.1%	28.9%	55.9%	62.8%	35.1%	24.4%	36.6%
Dismissal	47.2%	61.9%	71.1%	44.1%	37.2%	59.5%	68.3%	63.4%
Others	0.0%	0.0%	0.0%	0.0%	0.0%	5.4%	7.3%	0.0%
Juvenile Truancy: # Resolved	264	524	324	151	387	351	285	343
Approve of Petition	1.9%	5.0%	0.6%	7.3%	23.5%	3.4%	2.5%	0.6%
Dismissal	98.1%	95.0%	99.4%	92.7%	76.5%	96.6%	97.5%	99.4%
Others	0.0%	0.0%	0.0%	0.0%	0.0%	0.0%	0.0%	0.0%
Juvenile Offender: # Resolved	363	364	413	398	373	310	316	339
Resolved by Trial (Fact Finding)	1.1%	1.4%	4.6%	1.0%	3.5%	3.3%	4.1%	2.7%
Resolved by Guilty Plea	34.7%	37.4%	36.3%	34.4%	33.0%	35.2%	35.4%	37.8%
Dismissal	46.3%	40.9%	43.1%	43.2%	40.5%	37.7%	38.6%	36.9%
Deferred Disposition (DDSP)	13.2%	15.1%	12.6%	15.8%	17.4%	18.7%	17.4%	17.1%
Others (including Deferred Prosecution)	4.7%	5.2%	3.4%	5.5%	5.6%	5.2%	4.4%	5.6%
Criminal RALJ: # Resolved	35	48	39	40	33	30	34	32
RALJ Decision	54.3%	58.3%	79.5%	82.5%	66.7%	76.7%	70.6%	53.1%
Dismissal	45.7%	35.4%	10.3%	10.0%	15.2%	20.0%	17.7%	46.9%
Others	0.0%	6.3%	10.3%	7.5%	18.2%	3.3%	11.8%	0.0%
Civil RALJ: # Resolved	8	15	12	24	16	19	15	10
RALJ Decision	12.5%	46.7%	50.0%	37.5%	50.0%	36.8%	53.3%	60.0%
Dismissal	62.5%	46.7%	41.7%	25.0%	18.8%	42.1%	33.3%	40.0%
Others	25.0%	6.7%	8.3%	37.5%	31.3%	21.1%	13.3%	0.0%

* Reflecting all documents received by 10/15/2017.

Chart 2-A. Quarterly Resolutions
Total Judicial Cases Only ("Matters Filed with Clerk" excluded)

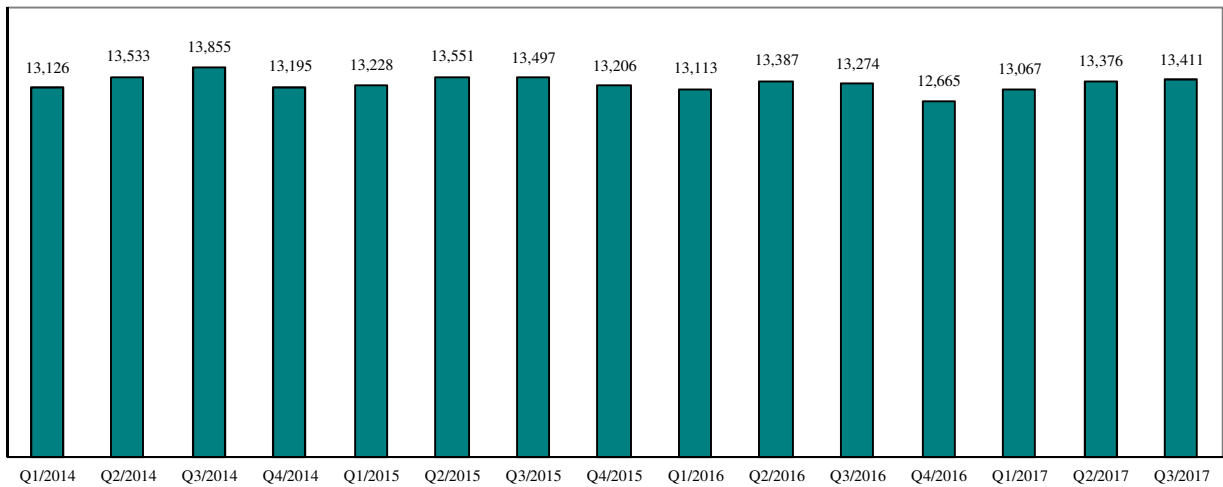
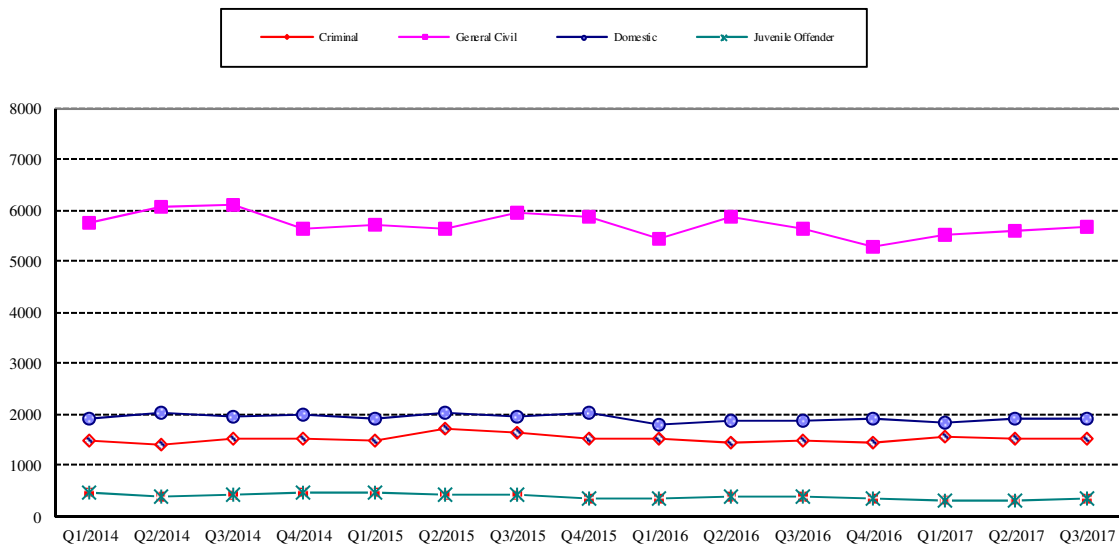


Chart 2-B. Quarterly Resolutions: Criminal, Dmestic, General Civil and Juvenile Offender Cases Only



* Note: "General Civil" is specifically defined in this report. The category of "General Civil" does **not** include the following case types: domestic, probate, guardianship, adoption, paternity, mental illness, juvenile cases (dependency, at-risk youth, child-in-need of service), civil RALJ, and tax filings that don't require judicial resources ("matters filed with clerk"). Please check the Appendix for the cause codes in the "General Civil" category.

Table 3. Age of Resolved Cases
King County Superior Court

Reporting Category	Age of Cases at Resolution							
	Q4/15	Q1/16	Q2/16	Q3/16	Q4/16	Q1/17	Q2/17	Q3/17*
Criminal (excl. RALJ)								
Age (days)								
50% Cases Resolved by Day	113	120	111	108	112	127	125	126
90% Cases Resolved by Day	306	364	346	328	317	371	371	361
Comparison with Court Standard of								
90% in 4 months	53%	50%	54%	56%	53%	47%	49%	48%
98% in 6 months	73%	69%	71%	74%	71%	65%	65%	67%
100% in 9 months	88%	84%	86%	86%	87%	81%	81%	81%
General Civil ⁽¹⁾								
Age (days)								
50% Cases Resolved by Day	35	38	33	28	42	40	41	40
90% Cases Resolved by Day	398	388	368	357	357	367	366	358
Comparison with Court Standard of								
90% in 12 months	88%	86%	89%	92%	89%	90%	88%	91%
98% in 18 months	97%	96%	97%	98%	97%	98%	97%	98%
100% in 24 months	99%	99%	99%	99%	99%	99%	99%	99%
Domestic								
Age (days)								
50% Cases Resolved by Day	149	176	172	147	154	172	144	146
90% Cases Resolved by Day	372	378	372	371	368	383	372	381
Comparison with Court Standard of								
90% in 8 months	66%	61%	61%	66%	65%	62%	68%	67%
98% in 10 months	76%	73%	75%	78%	78%	76%	78%	76%
100% in 14 months	93%	92%	94%	94%	94%	94%	94%	91%
Probate								
Age (days)								
50% Cases Resolved by Day	0	0	0	0	0	0	0	0
90% Cases Resolved by Day	19	12	13	24	8	4	22	15
Comparison with Court Standard of								
90% in 8 months	97%	97%	97%	98%	96%	98%	97%	98%
98% in 18 months	99%	100%	99%	99%	99%	99%	99%	99%
100% in 36 months	100%	100%	100%	100%	100%	99%	100%	99%
Guardianship								
Age (days)								
50% Cases Resolved by Day	62	70	68	71	65	73	63	69
90% Cases Resolved by Day	193	162	240	273	208	334	304	284
Comparison with Court Standard of								
90% in 8 months	92%	96%	91%	85%	94%	85%	88%	88%
98% in 18 months	99%	100%	99%	98%	100%	97%	98%	99%
100% in 36 months	100%	100%	100%	100%	100%	100%	100%	100%
Adoption								
Age (days)								
50% Cases Resolved by Day	55	62	66	99	69	55	61	79
90% Cases Resolved by Day	211	499	444	714	257	437	227	376
Comparison with Court Standard of								
90% in 8 months	89%	80%	86%	68%	87%	83%	89%	82%
98% in 10 months	91%	84%	86%	79%	94%	84%	92%	85%
100% in 14 months	94%	89%	85%	81%	99%	88%	95%	91%
Paternity								
Age (days)								
50% Cases Resolved by Day	139	164	142	172	154	143	141	140
90% Cases Resolved by Day	272	306	307	296	367	291	317	335
Comparison with Court Standard of								
90% in 8 months	84%	73%	79%	71%	71%	82%	82%	79%
98% in 10 months	94%	88%	89%	92%	82%	93%	87%	87%
100% in 14 months	98%	97%	98%	97%	96%	99%	95%	95%

Table 3 (cont.) Age of Resolved Cases

King County Superior Court

Reporting Category	Age of Cases at Resolution							
	Q4/15	Q1/16	Q2/16	Q3/16	Q4/16	Q1/17	Q2/17	Q3/17*
ITA (civil commitment) **								
Age (days)								
50% Cases Resolved by Day	4	3	4	4	4	4	4	4
90% Cases Resolved by Day	21	15	12	15	13	14	14	18
Juvenile Dependency (DEP)								
Age (days)								
50% Cases Resolved by Day	125	85	104	278	132	112	124	153
90% Cases Resolved by Day	221	218	230	570	283	232	268	389
Comparison with Court Standard of								
90% in 8 months	94%	92%	93%	46%	85%	90%	82%	74%
98% in 10 months	95%	97%	96%	60%	90%	94%	90%	81%
100% in 14 months	98%	99%	96%	77%	96%	99%	95%	93%
Juvenile Termination (TER)								
Age (days)								
50% Cases Resolved by Day	106	163	259	272	182	131	84	141
90% Cases Resolved by Day	350	406	665	680	679	437	453	445
Comparison with Court Standard of								
90% in 8 months	81%	68%	45%	45%	63%	72%	81%	70%
98% in 10 months	84%	81%	61%	61%	68%	76%	83%	70%
100% in 14 months	97%	92%	69%	73%	72%	90%	89%	89%
Juv ARY/CHINS/OTHER								
Age (days)								
50% Cases Resolved by Day	35	55	53	208	60	57	54	224
90% Cases Resolved by Day	288	294	230	730	338	230	223	3526
Comparison with Court Standard of								
90% in 8 months	90%	86%	96%	58%	86%	91%	95%	58%
98% in 10 months	93%	91%	98%	62%	86%	97%	95%	64%
100% in 14 months	97%	94%	100%	74%	93%	100%	100%	69%
Juvenile Truancy**								
Age (days)								
50% Cases Resolved by Day	269	341	371	483	320	343	394	436
90% Cases Resolved by Day	394	493	514	591	608	456	777	1183
Juvenile Offender								
Age (days)								
50% Cases Resolved by Day	88	99	112	90	93	94	86	85
90% Cases Resolved by Day	257	235	340	309	340	245	261	254
Comparison with Court Standard of								
90% in 4 months	66%	60%	53%	60%	61%	59%	65%	63%
98% in 6 months	79%	79%	73%	79%	75%	78%	79%	80%
100% in 9 months	91%	95%	87%	87%	87%	92%	91%	92%
Criminal RALJ								
Age (days)								
50% Cases Resolved by Day	260	247	269	292	273	349	269	333
90% Cases Resolved by Day	421	636	510	449	497	586	636	629
Civil RALJ								
Age (days)								
50% Cases Resolved by Day	170	165	172	165	151	163	161	203
90% Cases Resolved by Day	249	280	225	227	326	350	255	584

* Reflecting all documents received by 10/15/2017.

** No standard yet.

Table 4. Active Pending Caseload Statistics
King County Superior Court

Reporting Category	Q4/15	Q1/16	Q2/16	Q3/16	Q4/16	Q1/17	Q2/17	Q3/17*
Total (incl. RALJ)								
Previous Pending (+)	18333	17886	18216	18216	18678	19119	19087	19674
New Filing (+)	12334	12992	13373	12966	12097	13209	13798	13082
Resolved (-)	13206	13113	13387	13274	12665	13067	13376	13411
End Pending	17886	18216	18663	18678	19119	19087	19674	19654
Resolution Rate**	1.071	1.009	1.001	1.020	1.047	0.989	0.969	1.025
Criminal (excl. RALJ)								
Previous Pending (+)	2727	2619	2725	2849	3050	3139	3116	3242
New Filing (+)	1395	1647	1594	1780	1610	1606	1704	1583
Resolved (-)	1532	1529	1444	1483	1432	1554	1536	1519
End Pending	2619	2725	2849	3050	3193	3116	3242	3201
Resolution Rate**	1.098	0.928	0.906	0.833	0.889	0.968	0.901	0.960
General Civil								
Previous Pending (+)	6851	6691	6686	6803	7044	7752	7336	7338
New Filing (+)	5210	5110	5602	5531	4931	5199	5491	5477
Resolved (-)	5853	5435	5872	5628	5301	5516	5608	5673
End Pending	6691	6686	6803	7044	7752	7336	7338	7424
Resolution Rate**	1.123	1.064	1.048	1.018	1.075	1.061	1.021	1.036
Asbestos Cases (civil) ⁽¹⁾								
Previous Pending (+)	60	56	55	50	58	46	42	39
New Filing (+)	2	8	9	18	6	5	2	6
Resolved (-)	10	9	14	8	16	9	7	8
End Pending	56	55	50	58	46	42	39	36
Resolution Rate**	5.000	1.125	1.556	0.444	2.667	1.800	3.500	1.333
Domestic								
Previous Pending (+)	4562	4234	4336	4416	4465	4337	4386	4497
New Filing (+)	1694	1897	1942	1947	1720	1850	2046	1965
Resolved (-)	2019	1810	1895	1881	1924	1829	1930	1902
End Pending	4234	4336	4416	4465	4337	4386	4497	4585
Resolution Rate**	1.192	0.954	0.976	0.966	1.119	0.989	0.943	0.968
Probate								
Previous Pending (+)	581	580	624	703	715	684	808	814
New Filing (+)	1419	1586	1600	1454	1425	1783	1645	1501
Resolved (-)	1397	1561	1549	1473	1387	1680	1670	1472
End Pending	580	624	703	715	684	808	814	869
Resolution Rate**	0.984	0.984	0.968	1.013	0.973	0.942	1.045	0.981
Guardianship								
Previous Pending (+)	305	311	336	341	337	329	330	351
New Filing (+)	253	245	263	257	247	228	249	225
Resolved (-)	228	220	258	265	231	232	231	230
End Pending	311	336	341	337	329	330	351	345
Resolution Rate**	0.901	0.898	0.981	1.031	0.935	1.018	0.928	1.022
Adoption								
Previous Pending (+)	163	147	163	166	163	135	182	170
New Filing (+)	114	130	116	101	111	133	132	136
Resolved (-)	131	116	113	104	140	86	145	130
End Pending	147	163	166	163	135	182	170	177
Resolution Rate**	1.149	0.892	0.974	1.030	1.261	0.647	1.098	0.956
Paternity								
Previous Pending (+)	293	310	278	261	232	253	260	266
New Filing (+)	163	139	133	108	148	131	151	136
Resolved (-)	153	171	140	141	121	127	150	158
End Pending	310	278	261	232	253	260	266	241
Resolution Rate**	0.939	1.230	1.053	1.306	0.818	0.969	0.993	1.162

* Reflecting all documents received by 10/15/2017.

** A value of "Resolution Rate" less than one indicates the resolution pace is slower than the filing pace.

Table 4 (cont.) Active Pending Caseload Statistics
King County Superior Court

Reporting Category	Q4/15	Q1/16	Q2/16	Q3/16	Q4/16	Q1/17	Q2/17	Q3/17*
ITA (civil commitment)								
Previous Pending (+)	122	90	95	118	82	60	78	148
New Filing (+)	935	1020	1056	1048	1028	1092	1225	1200
Resolved (-)	957	1014	1034	1085	1045	1073	1157	1206
End Pending	90	95	118	82	60	78	148	141
Resolution Rate**	1.024	0.994	0.979	1.035	1.017	0.983	0.944	1.005
Juvenile Dependency (DEP)								
Previous Pending (+)	394	474	506	504	289	300	345	353
New Filing (+)	259	210	188	175	162	210	202	183
Resolved (-)	159	172	187	397	140	164	195	216
End Pending	474	506	504	289	300	345	353	321
Resolution Rate**	0.614	0.819	0.995	2.269	0.864	0.781	0.965	1.118
Juvenile Termination (TER)								
Previous Pending (+)	194	164	148	181	128	128	148	175
New Filing (+)	51	44	82	41	52	70	83	68
Resolved (-)	61	62	48	103	49	50	56	72
End Pending	164	148	181	128	128	148	175	171
Resolution Rate**	1.196	1.409	0.585	2.512	0.942	0.714	0.675	1.059
Juv ARY/CHINS/OTHERS								
Previous Pending (+)	87	111	118	136	98	86	103	120
New Filing (+)	56	63	64	51	61	52	59	59
Resolved (-)	36	63	45	93	70	37	41	101
End Pending	111	118	136	98	86	103	120	81
Resolution Rate**	0.642	1.000	0.703	1.824	1.148	0.712	0.695	1.712
Juvenile Truancy								
Previous Pending (+)	1202	1329	1397	1430	1374	1237	1389	1513
New Filing (+)	391	532	347	93	250	499	405	174
Resolved (-)	264	524	324	151	387	351	285	343
End Pending	1329	1397	1430	1374	1237	1389	1513	1395
Resolution Rate**	0.675	0.985	0.934	1.624	1.548	0.703	0.704	1.971
Juvenile Offender								
Previous Pending (+)	614	581	571	538	504	441	430	488
New Filing (+)	337	307	337	328	298	313	333	329
Resolved (-)	363	364	413	398	373	310	316	339
End Pending	581	571	538	504	441	430	488	502
Resolution Rate**	1.077	1.186	1.226	1.213	1.252	0.990	0.949	1.030
Criminal RALJ								
Previous Pending (+)	154	156	146	131	107	107	108	129
New Filing (+)	40	40	24	14	33	24	52	26
Resolved (-)	35	48	39	40	33	30	34	32
End Pending	156	146	131	107	107	108	129	129
Resolution Rate**	0.875	1.200	1.625	2.857	1.000	1.25	0.854	1.231
Civil RALJ								
Previous Pending (+)	24	33	32	36	32	31	26	31
New Filing (+)	15	14	16	20	15	14	19	14
Resolved (-)	8	15	12	24	16	19	15	10
End Pending	33	32	36	32	31	26	31	36
Resolution Rate**	0.533	1.071	0.750	1.200	1.067	1.357	0.789	0.714

* Reflecting all documents received by 10/15/2017.

** A value of "Resolution Rate" less than one indicates the resolution pace is slower than the filing pace.

Chart 4-A. Active Pending Caseload at Quarter End
Total Judicial Cases Only ("Matters Filed with Clerk" excluded)

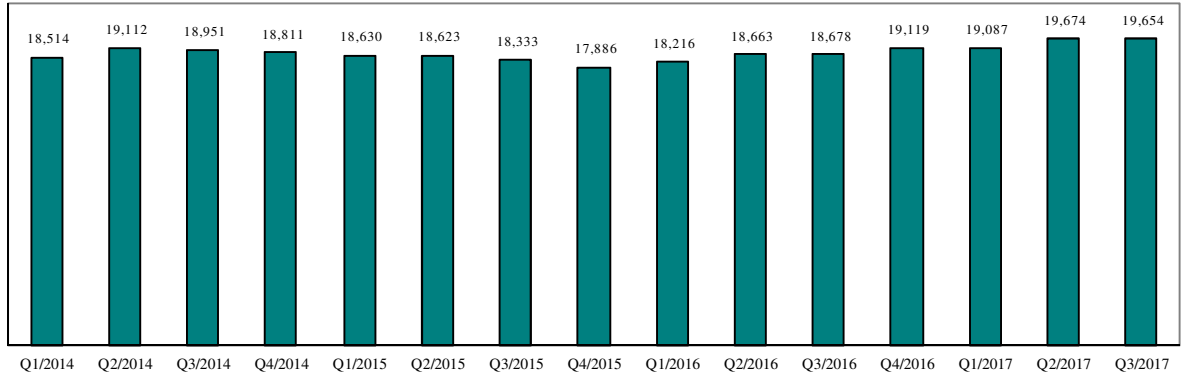


Chart 4-B. Active Pending Caseload at Quarter End: Domestic and General Civil Cases Only

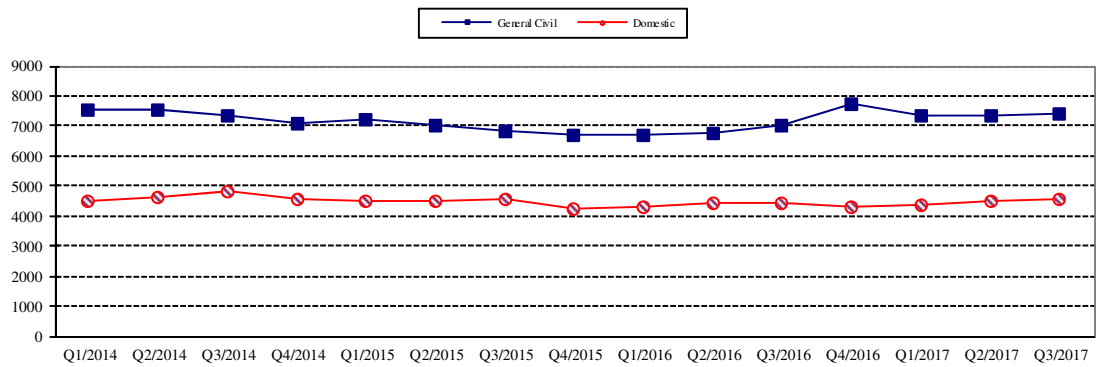
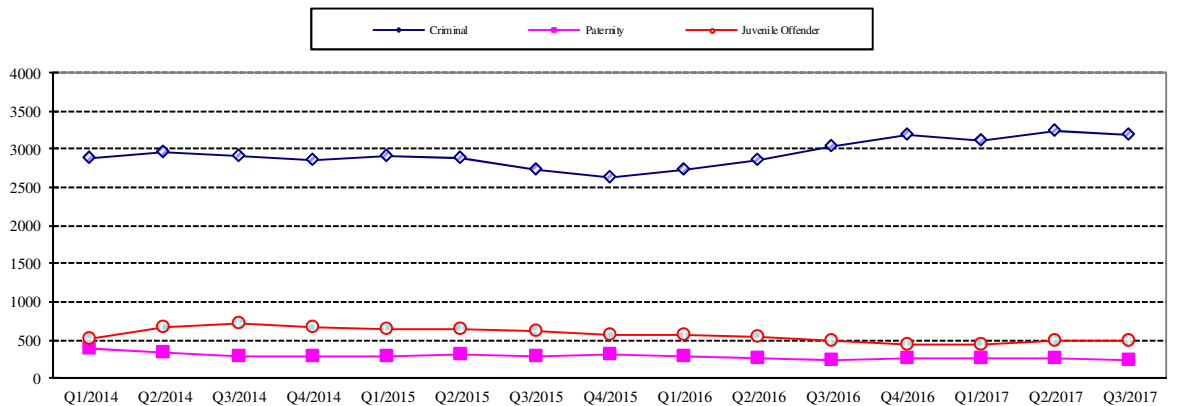


Chart 4-C. Active Pending Caseload at Quarter End:
Criminal, Juvenile Offender, Paternity and Dependency Cases Only



* Note: "General Civil" is specifically defined in this report. The category of "General Civil" does **not** include the following case types: domestic, probate, guardianship, adoption, paternity, mental illness, juvenile cases (dependency, at-risk youth, child-in-need of service), civil RALJ, and tax filings that don't require judicial resources ("matters filed with clerk"). Please check the Appendix for the cause codes in the "General Civil" category.

Table 5. Age of Pending Cases

King County Superior Court

Reporting Category	Age of Pending Cases and # of Cases in Each Age Interval							
	Q4/15	Q1/16	Q2/16	Q3/16	Q4/16	Q1/17	Q2/17	Q3/17*
Criminal (excl. RALJ): # of Cases	2619	2825	2849	3050	3193	3116	3242	3201
Age (days)								
Median (50 percentile)	110	95	99	101	111	115	106	117
95 percentile	610	395	541	542	564	562	529	566
# of Cases in Age Interval								
0 - 60 days (0 - 2 months)	808	1020	997	1046	964	993	1068	888
61 - 120 days (3 - 4 months)	586	547	671	629	709	602	699	743
121 - 180 days (5 - 6 months)	357	348	390	442	511	473	417	498
181 - 270 days (7 - 9 months)	337	306	292	389	387	436	408	407
> 270 days (> 9 months)	531	504	494	544	622	612	650	665
General Civil: # of Cases	6691	6686	6803	7044	7752	7336	7338	7424
Age (days)								
Median (50 percentile)	143	134	126	131	149	149	129	132
95 percentile	536	395	491	501	514	520	506	527
# of Cases in Age Interval								
0 - 120 days (0 - 4 months)	2942	3127	3302	3306	3270	3145	3515	3465
121 - 240 days (5 - 8 months)	1688	1643	1704	1885	2095	1923	1692	1922
241 - 360 days (9 - 12 months)	1144	1063	997	1031	1374	1283	1175	1059
361 - 540 days (13 - 18 months)	590	567	556	531	669	664	658	638
541 - 720 days (19 - 24 months)	185	146	129	180	190	173	163	203
> 720 days (> 24 months)	142	140	115	111	154	149	135	137
Asbestos Cases (civil) ⁽¹⁾ : # of Cases	56	55	50	58	46	42	39	36
Age (days)								
Median (50 percentile)	332	304	353	339	235	249	330	390
95 percentile	791	690	847	939	1013	652	652	549
# of Cases in Age Interval								
0 - 120 days (0 - 4 months)	6	9	10	17	8	7	2	6
121 - 240 days (5 - 8 months)	17	5	5	9	17	12	7	4
241 - 360 days (9 - 12 months)	8	16	15	3	8	13	16	3
361 - 540 days (13 - 18 months)	16	11	9	17	4	5	12	21
541 - 720 days (19 - 24 months)	5	9	4	4	6	4	2	1
> 720 days (> 24 months)	4	5	7	8	3	1	0	1
Domestic: # of Cases	4234	4336	4416	4465	4337	4386	4497	4585
Age (days)								
Median (50 percentile)	128	120	114	116	129	123	113	118
95 percentile	623	359	601	559	691	773	713	713
# of Cases in Age Interval								
0 - 120 days (0 - 4 months)	2020	2187	2307	2272	2041	2149	2342	2296
121 - 240 days (5 - 8 months)	1175	1133	1088	1185	1155	1132	1023	1200
241 - 360 days (9 - 12 months)	604	589	571	551	641	584	561	510
361 - 540 days (13 - 18 months)	196	177	202	226	227	212	262	264
> 540 days (> 18 months)	239	250	248	231	273	309	309	315
Probate: # of Cases	580	624	703	715	684	808	814	869
Age (days)								
Median (50 percentile)	297	332	338	393	377	343	387	416
95 percentile	1084	1025	1192	1277	1362	1418	1507	1591
# of Cases in Age Interval								
0 - 120 days (0 - 4 months)	149	161	181	160	150	204	172	167
121 - 240 days (5 - 8 months)	103	86	104	118	109	108	132	131
241 - 360 days (9 - 12 months)	86	81	82	72	81	109	81	101
361 - 540 days (13 - 18 months)	67	85	107	86	68	89	106	108
> 540 days (> 18 months)	175	211	229	279	276	298	323	362

Reflecting all documents received by 10/15/2017.

Table 5 (cont.). Age of Pending Cases

King County Superior Court

Reporting Category	Age of Pending Cases and # of Cases in Each Age Interval							
	Q4/15	Q1/16	Q2/16	Q3/16	Q4/16	Q1/17	Q2/17	Q3/17*
Guardianship: # of Cases	311	336	341	337	329	330	351	345
Age (days)								
Median (50 percentile)	70	67	78	81	83	86	86	102
95 percentile	409	364	456	506	510	498	487	550
# of Cases in Age Interval								
0 - 120 days (0 - 4 months)	215	222	217	214	189	189	211	189
121 - 240 days (5 - 8 months)	45	48	60	54	74	65	62	73
241 - 360 days (9 - 12 months)	31	32	27	35	28	39	37	28
361 - 540 days (13 - 18 months)	11	24	28	19	23	26	28	37
> 540 days (> 18 months)	9	10	9	15	15	11	13	18
Adoption: # of Cases	147	163	166	163	135	182	170	177
Age (days)								
Median (50 percentile)	155	101	112	106	116	88	110	88
95 percentile	1123	515	735	492	600	471	562	513
# of Cases in Age Interval								
0 - 120 days (0 - 4 months)	67	93	85	91	68	110	88	104
121 - 240 days (5 - 8 months)	24	21	37	34	31	31	36	31
241 - 360 days (9 - 12 months)	23	17	15	22	14	20	18	20
361 - 540 days (13 - 18 months)	13	17	13	11	14	16	18	14
> 540 days (> 18 months)	20	15	16	5	8	5	10	8
Paternity: # of Cases	310	278	261	232	253	260	266	241
Age (days)								
Median (50 percentile)	102	102	105	117	89	106	91	83
95 percentile	301	256	345	403	324	388	388	362
# of Cases in Age Interval								
0 - 120 days (0 - 4 months)	173	157	143	122	149	143	166	152
121 - 240 days (5 - 8 months)	95	86	77	71	70	75	56	49
241 - 360 days (9 - 12 months)	32	27	31	22	23	26	27	27
361 - 540 days (13 - 18 months)	10	7	8	14	9	12	15	10
> 540 days (> 18 months)	0	1	2	3	2	4	2	3
ITA (civil commitment): # of Cases	90	95	118	82	60	78	148	141
Age (days)								
Median (50 percentile)	10	9	25	5	12	5	8	16
95 percentile	168	182	350	442	545	547	103	131
# of Cases in Age Interval								
0 - 120 days (0 - 4 months)	76	85	100	70	47	74	141	129
121 - 240 days (5 - 8 months)	11	3	8	0	6	0	3	8
> 240 days (> 8 months)	3	7	10	12	7	4	4	4
Juv Dependency (DEP): # of Cases	474	506	504	289	300	345	353	321
Age (days)								
Median (50 percentile)	90	137	170	82	89	73	94	81
95 percentile	562	455	690	382	376	366	400	251
# of Cases in Age Interval								
0 - 60 days (0 - 2 months)	180	131	114	119	125	142	125	133
61 - 120 days (3 - 4 months)	110	105	72	71	71	80	95	76
121 - 180 days (5 - 6 months)	49	82	78	42	51	39	59	46
181 - 270 days (7 - 9 months)	56	71	79	23	28	48	26	53
> 270 days (> 9 months)	79	117	161	34	25	36	48	13
Juv Termination (TER): # of Cases	164	148	181	128	128	148	175	171
Age (days)								
Median (50 percentile)	175	214	156	152	177	106	103	128
95 percentile	539	589	680	645	527	617	603	604
# of Cases in Age Interval								
0 - 60 days (0 - 2 months)	27	21	48	23	20	55	57	48
61 - 120 days (3 - 4 months)	27	19	33	29	34	21	43	32
121 - 180 days (5 - 6 months)	31	17	17	25	14	17	16	27
181 - 270 days (7 - 9 months)	20	35	21	14	30	10	15	28
> 270 days (> 9 months)	59	56	62	37	30	45	44	36

* Reflecting all documents received by 10/15/2017.

Table 5 (cont.). Age of Pending Cases

King County Superior Court

Reporting Category	Age of Pending Cases and # of Cases in Each Age Interval							
	Q4/15	Q1/16	Q2/16	Q3/16	Q4/16	Q1/17	Q2/17	Q3/17*
Juv. ARY/CHINS/OTHER: # of Cases	111	118	136	98	86	103	120	81
Age (days)								
Median (50 percentile)	207	218	225	169	149	158	169	99
95 percentile	3482	2850	3630	3813	3905	3938	4012	405
# of Cases in Age Interval								
0 - 60 days (0 - 2 months)	23	26	37	25	23	30	30	32
61 - 120 days (3 - 4 months)	20	14	16	14	13	18	13	13
121 - 180 days (5 - 6 months)	11	14	10	16	14	10	24	9
181 - 270 days (7 - 9 months)	7	14	13	6	6	12	8	18
> 270 days (> 9 months)	50	50	60	37	30	33	45	9
Juvenile Truancy: # of Cases	1329	1397	1430	1374	1237	1389	1513	1395
Age (days)								
Median (50 percentile)	274	143	158	236	290	213	157	206
95 percentile	1324	470	899	1017	1334	1199	1139	961
# of Cases in Age Interval								
0 - 60 days (0 - 2 months)	277	380	177	74	173	369	276	167
61 - 120 days (3 - 4 months)	115	216	335	47	78	195	315	69
121 - 180 days (5 - 6 months)	9	242	281	296	85	125	249	316
181 - 270 days (7 - 9 months)	253	11	261	430	228	60	173	400
> 270 days (> 9 months)	675	548	376	527	673	640	500	443
Juvenile Offender: # of Cases	581	571	538	504	441	430	488	502
Age (days)								
Median (50 percentile)	120	118	98	92	98	91	85	88
95 percentile	507	435	596	689	628	646	745	806
# of Cases in Age Interval								
0 - 60 days (0 - 2 months)	162	177	201	176	142	166	189	179
61 - 120 days (3 - 4 months)	129	113	99	109	106	84	109	131
121 - 180 days (5 - 6 months)	93	71	63	65	66	56	51	61
181 - 270 days (7 - 9 months)	87	75	44	44	45	43	38	38
> 270 days (> 9 months)	110	135	131	110	82	81	101	93
Criminal RALJ: # of Cases	156	146	131	107	107	108	129	129
Age (days)								
Median (50 percentile)	171	169	198	227	208	183	115	163
95 percentile	673	364	506	656	639	694	718	810
# of Cases in Age Interval								
0 - 60 days (0 - 2 months)	28	27	16	8	17	23	36	19
61 - 120 days (3 - 4 months)	20	23	21	17	16	6	31	24
121 - 180 days (5 - 6 months)	40	24	21	10	11	25	7	30
181 - 270 days (7 - 9 months)	42	37	27	27	20	12	17	19
> 270 days (> 9 months)	26	35	46	45	43	42	38	37
Civil RALJ: # of Cases	33	32	36	32	31	26	31	36
Age (days)								
Median (50 percentile)	93	106	108	84	96	100	67	106
95 percentile	304	339	476	522	262	228	270	349
# of Cases in Age Interval								
0 - 60 days (0 - 2 months)	13	9	9	11	9	8	15	11
61 - 120 days (3 - 4 months)	7	9	14	12	11	11	5	11
121 - 180 days (5 - 6 months)	5	7	6	5	6	4	6	9
181 - 270 days (7 - 9 months)	5	3	3	1	4	3	4	2
> 270 days (> 9 months)	3	4	4	3	1	0	1	3

* Reflecting all documents received by 10/15/2017.

Table 6. Seattle vs. Regional Justice Center (KNT): Filing, Resolution, Pending Caseload (%)

King County Superior Court

	Q3/16		Q4/16		Q1/17		Q2/17		Q3/17	
	SEA	KNT	SEA	KNT	SEA	KNT	SEA	KNT	SEA	KNT
Filings Total <i>(excl. filings with clerk)</i>	65%	35%	63%	37%	64%	36%	64%	36%	64%	36%
Criminal (excl. RALJ)	56%	44%	54%	46%	54%	46%	56%	44%	55%	45%
General Civil (excl. RALJ)	56%	44%	55%	45%	57%	43%	57%	43%	54%	46%
Domestic	61%	39%	60%	40%	60%	40%	58%	42%	61%	39%
Probate	75%	25%	75%	25%	75%	25%	77%	23%	75%	25%
Guardianship	61%	39%	61%	39%	58%	42%	64%	36%	66%	34%
Adoption	75%	25%	76%	24%	72%	28%	76%	24%	74%	26%
Paternity	56%	44%	41%	59%	52%	48%	46%	54%	47%	53%
ITA (civil commitment)	100%	---	100%	---	100%	---	100%	---	100%	---
Juv. Dependency (DEP)	69%	31%	64%	36%	72%	28%	66%	34%	62%	38%
Juv. Termination (TER)	73%	27%	52%	48%	49%	51%	70%	30%	65%	35%
Juvenile ARY/CHINS/Other	53%	47%	49%	51%	35%	65%	56%	44%	49%	51%
Juvenile Truancy	85%	15%	38%	62%	45%	55%	36%	64%	97%	3%
Juvenile Offender	100%	---	100%	---	100%	---	100%	---	100%	---
Criminal RALJ	71%	29%	100%	---	96%	4%	98%	2%	69%	31%
Civil RALJ	80%	20%	93%	7%	86%	14%	79%	21%	36%	64%
Resolution Total <i>(excl. filings with clerk)</i>	63%	37%	64%	36%	64%	36%	65%	35%	64%	36%
Criminal (excl. RALJ)	56%	44%	57%	43%	58%	42%	55%	45%	58%	42%
General Civil (excl. RALJ)	54%	46%	56%	44%	57%	43%	58%	42%	56%	44%
Domestic	60%	40%	62%	38%	60%	40%	60%	40%	61%	39%
Probate	76%	24%	74%	26%	75%	25%	77%	23%	74%	26%
Guardianship	57%	43%	64%	36%	63%	37%	65%	35%	52%	48%
Adoption	72%	28%	82%	18%	70%	30%	75%	25%	70%	30%
Paternity	61%	39%	52%	48%	45%	55%	49%	51%	49%	51%
ITA (civil commitment)	100%	---	100%	---	100%	---	100%	---	100%	---
Juv. Dependency (DEP)	46%	54%	70%	30%	71%	29%	68%	32%	64%	36%
Juv. Termination (TER)	54%	46%	78%	22%	54%	46%	64%	36%	68%	32%
Juvenile ARY/CHINS/Other	60%	40%	56%	44%	46%	54%	44%	56%	64%	36%
Juvenile Truancy	38%	62%	53%	47%	39%	61%	42%	58%	47%	53%
Juvenile Offender	100%	---	100%	---	100%	---	100%	---	100%	---
Criminal RALJ	98%	2%	97%	3%	93%	7%	94%	6%	94%	6%
Civil RALJ	79%	21%	94%	6%	84%	16%	93%	7%	80%	20%
Pending Total <i>(excl. filings with clerk)</i>	65%	35%	64%	36%	63%	37%	62%	38%	62%	38%
Criminal (excl. RALJ)	59%	41%	58%	42%	56%	46%	57%	43%	55%	45%
General Civil (excl. RALJ)	68%	32%	67%	33%	68%	32%	66%	34%	65%	35%
Domestic	60%	40%	60%	40%	59%	41%	58%	42%	58%	42%
Probate	77%	23%	79%	21%	79%	21%	78%	22%	79%	21%
Guardianship	62%	38%	60%	40%	57%	43%	57%	43%	66%	34%
Adoption	76%	24%	66%	34%	69%	31%	70%	30%	73%	27%
Paternity	58%	42%	49%	51%	51%	49%	50%	50%	49%	51%
ITA (civil commitment)	100%	---	100%	---	100%	---	100%	---	100%	---
Juv. Dependency (DEP)	61%	39%	64%	36%	65%	35%	64%	36%	63%	37%
Juv. Termination (TER)	68%	32%	65%	35%	61%	39%	64%	36%	63%	37%
Juvenile ARY/CHINS/Other	63%	37%	64%	36%	53%	47%	58%	42%	46%	54%
Juvenile Truancy	50%	50%	47%	53%	49%	51%	47%	53%	53%	47%
Juvenile Offender	100%	---	100%	---	100%	---	100%	---	100%	---
Criminal RALJ	91%	9%	91%	9%	92%	8%	94%	6%	89%	11%
Civil RALJ	78%	22%	87%	13%	89%	11%	81%	19%	61%	39%

Reflecting all documents received by 10/15/2017.

Table 7. Quarterly Utilization of Pro Tem Judges/Commissioners ⁽¹⁾

Category	Q2/15	Q3/15	Q4/15	Q1/16	Q2/16	Q3/16	Q4/16	Q1/17	Q2/17	Q3/17*
Grand Total	1226	1054	1733	769	1157	859	1732	924	1567	1657
Judge FTE Equivalent ⁽³⁾	2.7	2.3	3.9	1.7	2.6	1.9	3.8	2.1	3.5	3.7
By Work Type										
Pro Tem Judge	97	130	236	99	191	134	436	166	322	456
Pro Tem Commissioner	1117	925	1497	679	966	725	1256	759	1245	1201
Unspecified	13	0	0	0	0	0	41	0	0	0
By Location										
KCCCH	454	346	882	420	394	346	840	344	604	864
MRJC	273	326	501	193	239	214	389	262	463	234
Juvenile	312	260	234	123	405	201	367	208	411	429
ITA	174	122	117	33	119	98	137	111	89	131
Other	13	0	0	0	0	0	0	7	0	0
By Calendar Type										
Criminal	51	112	185	70	50	55	130	36	68	120
Civil	0	0	0	3	0	0	0	0	0	0
Ex Parte	219	100	264	64	134	95	111	56	305	315
Family Law/Domestic	453	461	929	470	421	397	743	415	615	429
Dependency	225	240	172	81	251	120	250	150	236	320
Juvenile Offender	45	18	51	27	125	69	108	31	145	104
BECCA	42	3	11	16	29	13	10	26	30	6
ITA	174	122	117	33	119	98	137	111	89	131
Juvenile Drug Court	0	0	0	0	0	0	0	0	0	0
Family Treatment Court	0	0	0	0	0	0	0	0	0	0
Plea Calendar	0	0	0	0	4	11	157	79	67	167
Status/Non-Compliance	4	0	0	7	16	2	5	0	0	2
Other or Unspecified	13	0	0	0	9	0	82	20	12	65
By Reason										
Vacation Backfill	527	673	818	397	582	499	783	365	628	883
Medical Backfill	156	168	294	211	213	223	302	159	184	171
Duty Time	244	132	288	134	189	89	166	208	437	204
Conference Coverage	257	0	59	0	134	24	0	0	0	21
Congestion	30	69	126	23	29	14	235	99	318	380
Vacancy Coverage	0	0	5	4	0	0	185	84	0	0
Other	13	12	145	0	11	10	61	10	0	0

(1) This table is based on the time sheet for compensation

(2) Judge FTE Equivalent = # of hours / [7.5 hours/day * 20 days/month * 3 months] = # of hours/450.

Data for the most current quarter are incomplete at reporting time and will be updated in next quarterly report.

The statistics on Pro Tem judge/commissioner use provide information on the external help the court has obtained in order to handle the workload. The data are collected on the time sheet for compensation (therefore it does not include unpaid volunteering or visiting judges/commissioners). The database on Pro Tem judges/commissioners is managed by the Administrative Services Department (ASD) of King County Superior Court. The Pro Tem total hours presented in this section are provided quarterly by ASD.

Table 8. Family Law Activity

	1ST QTR, 2016		2ND QTR, 2016		3RD QTR, 2016		4TH QTR, 2016		1ST QTR, 2017		2ND QTR, 2017		3RD QTR, 2017	
	HRGS	ORDS	HRGS	ORDS	HRGS	ORDS	HRGS	ORDS	HRGS	ORDS	HRGS	ORDS	HRGS	ORDS
SEATTLE														
FAM.LAW	451	1673	483	1643	465	1546	430	1506	447	1553	435	1483	440	1521
DAILY AVG.	7	27	8	27	8	25	7	25	7	25	7	24	7	25
PATERNITY	103	909	67	752	76	840	94	752	71	792	48	665	52	720
DAILY AVG.	2	15	1	12	1	14	2	12	1	13	1	11	1	12
DOM. VIOL.	232	666	236	666	225	707	239	653	229	576	224	627	264	736
DAILY AVG.	4	11	4	11	4	12	4	11	4	9	4	10	4	12
KENT														
FAM.LAW	372	1309	368	1304	339	1268	361	1133	299	1209	334	1213	365	1249
DAILY AVG.	6	21	6	21	6	21	6	19	5	20	5	20	6	20
PATERNITY	72	763	46	697	59	622	63	515	61	699	57	685	58	591
DAILY AVG.	1	13	1	11	1	10	1	8	1	11	1	11	1	10
DOM. VIOL.	338	719	323	823	334	826	302	807	275	699	328	818	290	816
DAILY AVG.	6	12	5	13	5	14	5	13	5	11	5	13	5	13
SEA/KNT														
TOTAL	1568	6039	1523	5885	1498	5809	1489	5366	1382	5528	1426	5491	1469	5633
DAILY AVG.	26	99	25	96	25	95	24	88	23	91	23	90	24	92

The statistics on family law and Ex Parte activity are obtained directly from SCOMIS using the appropriate docket codes.

Table 9. Ex Parte Activity

	3RD QTR, 2016		4TH QTR, 2016		1ST QTR, 2017		2ND QTR, 2017		3RD QTR, 2017	
	HRGS	ORDS	HRGS	ORDS	HRGS	ORDS	HRGS	ORDS	HRGS	ORDS
SEATTLE										
ADOP/PAT	65	289	87	294	56	231	99	303	61	266
DOM. VIOL.	4	429	7	344	8	419	4	356	12	351
OTH. CIVIL	317	622	259	534	251	640	316	604	274	604
DOMESTIC	375	1688	400	1785	362	1722	399	1784	313	1643
PROB/GDN	1203	2445	1143	2367	853	2682	711	2301	691	1856
SUBTOTAL	1964	5473	1896	5324	1530	5694	1529	5348	1351	4720
DAILY AVG.	32	90	31	87	25	93	25	88	22	77
SEATTLE MAIL-IN										
ADOP/PAT	----	0	----	0	----	0	----	0	----	0
DOM. VIOL.	----	0	----	2	----	0	----	0	----	0
OTH. CIVIL	----	170	----	169	----	112	----	124	----	84
DOMESTIC	----	22	----	24	----	23	----	17	----	15
PROB/GDN	----	89	----	76	----	87	----	72	----	59
SUBTOTAL	----	281	----	271	----	222	----	213	----	158
DAILY AVG.	----	5	----	4	----	4	----	3	----	3
KENT										
ADOP/PAT	32	95	29	76	25	97	45	147	42	120
DOM. VIOL.	1	612	3	483	4	557	6	528	3	561
OTH. CIVIL	326	579	293	541	319	573	310	499	290	610
DOMESTIC	398	1348	377	1296	384	1277	388	1372	397	1287
PROB/GDN	473	760	423	728	455	807	453	690	409	601
SUBTOTAL	1230	3394	1125	3124	1187	3311	1202	3236	1141	3179
DAILY AVG.	20	56	18	51	19	54	20	53	19	52
KENT MAIL-IN										
ADOP/PAT	----	0	----	1	----	1	----	1	----	0
DOM. VIOL.	----	0	----	0	----	0	----	0	----	0
OTH. CIVIL	----	43	----	30	----	17	----	24	----	2
DOMESTIC	----	11	----	10	----	8	----	3	----	2
PROB/GDN	----	32	----	28	----	34	----	27	----	23
SUBTOTAL	----	86	----	69	----	60	----	55	----	27
DAILY AVG.	----	1	----	1	----	1	----	1	----	0
ALL SEA AND KENT										
TOTAL	3194	9235	3021	8789	2717	9288	2731	8853	2492	8085
AVERAGE	52	151	50	144	45	152	45	145	41	133

Note: Statistical report on Ex Parte via Clerk commenced in January 2009 and discontinued in 2016 when technology in E-filing allows orders being electronically signed by judicial officers without a department designation.

Appendix Glossary and Definition

General Definition

Active Status

A case is active if it is not on suspense status (see Suspense Status).

Case

A case is defined as a filing with an assigned case number (or a case number plus a defendant connection code in pre-1990 criminal filings).

Completion

A case is completed when dispositive document is filed with the court following resolution.

Jury Trial

A hearing is reported as a jury trial if the jury is impaneled.

New Case

A new case is an original filing with new case number assigned.

Non-Jury Trial

A hearing is reported as a non-jury trial if an opening statement is made, waived, or reserved. A juvenile fact finding hearings is reported as a non-jury trial.

Pending Case

A case is defined as pending if it is unresolved and active (not in suspense).

Reactivated Case

A case returns to active status from suspense status during the reporting period.

Re-opened Cases

A case is re-opened if it has been previously completed but returns to the court for supplement or change of the original case resolution. A re-opened case does not have a new case number. Only resolved cases can be "re-opened". (Note: measurement not available as of July 1996. SCOMIS capacity may exist after conversion to DB2 in the future).

Resolution

A case is resolved if all issues in the complaint are fully adjudicated.

Suspended Case

A case is placed in suspense status from active status during the reporting period.

Suspense Status

A case is on suspense status if it is on warrant, appeal, stay, mediation, arbitration ("Deferred Prosecution" is not a suspense status, but is treated as a resolution).

Trial

A hearing set before a judge or jury in which all the issues in the case are meant to be resolved. A trial normally includes opening statements to the court or jury stating what the evidence will show, introduction of witnesses and exhibits for direct and cross examination, final arguments to the court or jury in which counsel argue both the evidence and the law, and judgment by the court or jury stating what the facts of the case are and what law applies to the facts. In a jury case, it also includes the selection of the jury. A trial can be held

for one or more cases. A single trial may be held to adjudicate more than one case (as defined above).

Post-resolution Modifications

In this report, we also report the post-resolution modifications for case type 3 (domestic) and 5 (paternity). These numbers are based on the tracks (DMOD and DTBA) opened after the original resolution date (i.e., if the track beginning date is after the resolution date).

Section I. Filing Activity

Additional Filings with Clerk

Filings with clerk without assigning a SCOMIS case number. This reporting category consists of search warrants, wire taps, extradition, oaths and orders pertaining to Pro Tem judge/commissioners/Court

Reporters/Bailiffs, and other "non-case" filings as recorded under 12050 system.

Annual Filings

Total number of new case filings during the calendar year (January 1 to December 31).

Adoption Cases

This reporting category includes the following "cause-of-action" codes within SCOMIS case type 5:

- Relinquishment (REL)
- Termination of Parent/Child Relationship (TER)
- Adoption (ADP)
- Miscellaneous (MSC)
- Name Change - Confidential (CHN)
- Initial Pre-Placement Report Filed with Clerk (PPR)

General Civil Cases

"General Civil" cases include all civil matters other than Domestic, Probate, Guardianship, Adoption, Paternity and appeals from courts of limited jurisdiction and "Matters Filed with Clerk". "General civil" cases include small claims as identified by the "Small Claim Track". This reporting category includes the following "cause-of-action" codes within SCOMIS case type 2:

- Administrative Law Review (ALR)
- Change of Name - Non-Confidential (CHN)
- Collection (COL)
- Commercial (COM)
- Condemnation (CON)
- Domestic Violence Protection (DVP)
- Emancipation of Minor (EOM)
- Foreclosure (FOR)
- Civil Harassment (HAR)
- Injunction (INJ)
- Other Malpractice (MAL)
- Medical Malpractice (MED)
- Meretricious Relationship (MER)
- Malicious Harassment (MHA)
- Miscellaneous (MSC)
- Minor Settlement (MST) - as of 10/1/96, under Guardianship
- Petition of Civil Commitment- Sexual Predator (PCC)
- Property Fairness (PFA)
- Personal Injury (PIN)

- Property Damage (PRP)
- Quiet Title (QTI)
- Small Claims (LCA/LCI on “Small Claim Track”)
- Seizure of Property from the Commission of a Crime (SPC)
- Seizure of Property Resulting from a Crime (SPR)
- Tort Motor Vehicle (TMV)
- Tort Other (TTO)
- Unlawful Detainer (UND)
- Wrongful Death (WDE)
- Writ of Habeas Corpus (WHC)
- Miscellaneous Writ (WMW)
- Writ of Mandamus (WRM)
- Writ of Restitution (WRR)
- Writ of Review (WRV)

Civil RALJ Cases

Civil appeals from courts of limited jurisdiction (excluding small claims as identified by the “Small Claim Track”). Civil RALJ includes the following “cause-of-action” reporting categories:

- Lower Court Appeal - Civil and “Not a Small Claim”
- Lower Court Appeal - Infraction and “Not a Small Claim”

Note: The Civil RALJ cases are determined based on both SCOMIS “cause-of-action” code (LCA and LCI) within SCOMIS case type 2 and the “Small Claim Track”.

Criminal Cases (excl. RALJ)

Adult criminal cases, excluding appeals from courts of limited jurisdiction. This reporting category includes the following crime categories within SCOMIS case type 1:

- Homicide
- Sex Crime
- Robbery
- Assault
- Theft/Burglary
- Motor Vehicle Theft
- Controlled Substance
- Other Felony
- Others (Misdemeanor, Non-charge Case)

Criminal RALJ Cases

Criminal appeals from courts of limited jurisdiction. This reporting category includes all SCOMIS case type 1 cases that have an appeal from lower court field of “Yes”.

Domestic Cases

This reporting category includes the following “cause-of-action” codes within SCOMIS case type 3:

- Annulment – Invalidity (INV)
- Child Custody (CUS)
- Dissolution With Children Of The Marriage (DIC)
- Dissolution With No Children Of The Marriage (DIN)
- Dissolution of Domestic Partnership – With Children (DPC)
- Dissolution of Domestic Partnership – With No Children (DPN)
- Foreign Judgment (FJU)
- Invalidity – Domestic Partnership (INP)
- Mandatory Wage Assignment (MWA)
- Miscellaneous (MSC)
- Modification (MOD)
- Modification – Support Only (MDS)
- Out-Of-State Child Custody (OSC)
- Parenting Plan / Child Support (PPS)
- Reciprocal, Respondent In-County (RIC)
- Reciprocal, Respondent Out-of-County (ROC)
- Legal Separation (SEP)
- Legal Separation – Domestic Partnership (SPD)

Guardianship Cases

This reporting category includes the following “cause-of-action” codes within SCOMIS case type 4:

- Guardianship/Estate (G/E)
- Guardianship (GND)
- Limited Guardianship (LGD)
- Minor Settlement (MST)

Juvenile ARY/CHINS Cases

Juvenile dependency cases, excluding truancy cases and DEP cause code. This reporting category includes following “cause-of-action” codes within SCOMIS case type 7:

- Alternative Residential Placement (ARP)
- At-Risk Youth (ARY)
- Child in Need of Service (CNS)

Juvenile Dependency Cases

This reporting category includes following “cause-of-action” codes within SCOMIS case type 7:

- Dependency (DEP)
- Termination (TER)
- Developmental Disability (DDP)
- Guardianship Foster Children (GFC)
- Reinstatement of Parental Rights (RPR)
- Extension of Foster Care (EFC)
- Relative Visitation (RVS)

Juvenile Offender Cases

This reporting category includes the following crime categories in SCOMIS case type 8:

- Homicide
- Sex Crime
- Robbery
- Assault
- Theft/Burglary
- Motor Vehicle Theft
- Controlled Substance
- Other Felony
- Others (Misdemeanor, Non-charge Case)

Juvenile Truancy Cases

Mandatory truancy filings started on 10/01/1995. This reporting category includes the following “cause-of-action” code within SCOMIS case type 7:

- Truancy (TRU)

Matters Filed with Clerk

Filings with clerk (case numbers assigned), but requiring little or no judicial action. This reporting category includes the following “cause-of-action” codes within SCOMIS case type 2:

- Abstract of Judgment (ABJ)
- Foreign Judgment (FJU)
- Tax Warrant (TAX)
- Transcripts of Judgment (TRJ)

ITA (civil commitment) Cases

This reporting category includes all “cause-of-action” codes within SCOMIS case type 6:

- Alcoholic Treatment (ALT)
- Mental Illness - Adult (MI)
- Mental Illness - Juvenile (MIJ)
- Mental Illness - Family (MIF)

Paternity Cases

This reporting category includes the following “cause-of-action” codes within SCOMIS case type 5:

- Modification (MOD)
- Paternity (PAT)
- Paternity/URES/UFSA (PUR)

Probate Cases

This reporting category includes the following “cause-of-action” codes within SCOMIS case type 4:

- Absentee (ABS)
- Disclaimer (DSC)
- Estate (EST)
- Foreign Will (FNW)
- Miscellaneous (MSC)
- Non-Probate Notice to Creditors (NNC)
- Will Only (WLL)

Total Cases

New cases with case numbers assigned, excluding “Matters Filed with Clerk” and “Additional Filings with Clerk”.

Year-to-Date Filings

Total number of new filings since the beginning of calendar year (January 1) to the end of reporting period.

Section II. Resolution Category

Adoption - Resolved by Trial

Court Decision after Non-Jury Trial (CDAT)

Adoption - Uncontested

Consolidated Case (CONS)
Uncontested Resolution (UNDS)

Adoption - Settlement/Dismissal

Closed by Court Order after a Hearing (CLCO)
Dismissal without Trial (DSM)
Dismissal after Non-Jury Trial Commencement (DAT)
Settled after Non-Jury Trial Commencement (SAT)
Settled by Parties/Agreed Judgment (STPR)

Adoption - Closure by Clerk

Dismissal/Closure by Clerk (DSCK)

Adoption - Others

Change of Venue/Jurisdiction (CHV)
Other Non-specified Resolutions

Civil - Resolved by Jury Trial

Jury Verdict after Trial (JVAT)

Civil - Resolved by Non-Jury Trial

Court Decision after Non-Jury Trial (CDAT)

Civil - Summary Judgment

Summary Judgment (SMJG)

Civil - Default/Uncontested

Consolidated Case (CONS)
Default Judgment (DFJG)
Uncontested Resolution (UNDS)

Civil - Arbitration

Settle by Arbitration (ARBA)

Civil - Settlement/Dismissal

Closed by Court Order after a Hearing (CLCO)
Dismissal after Non-Jury Trial (DAT)
Dismissal after Jury Trial (DJT)
Dismissal (DSM)
Settled after Non-Jury Trial Commencement (SAT)
Settled after Jury Trial Commencement (SJT)
Settled by Parties/Agreed Judgment (STPR)

Civil - Closure by Clerk

Dismissal/Closure by Clerk (DSCK)

Civil - Others

Transferred to Federal bankruptcy Court (BANK)
Change of Venue/Jurisdiction (CHV)
Other Non-specified Resolutions

Civil RALJ - RALJ Decision

Court Decision to Affirm Appeal/review (CDTA)
Court Decision to Modify Appeal/Review (CDTM)
Court Decision to Reverse Appeal/review (CDTR)

Civil RALJ - Dismissal

Dismissal and Remand of Appeal/Review (DSRM)

Civil RALJ - Others

Other Non-specified Resolutions

Comparison with Court Standard

Percentage of cases actually falling within the Court’s standard benchmark.

Court Standard

Benchmarks set by a state advisory committee and adopted by the court indicating percentage of cases to be resolved at certain age (in months, 1 month = 30 days as used in the Advisory Case Processing Time Standard as published in the Court Rule).

Court standard is based on timelines as suggested by State Advisory Committee. For a case type with no time standard, the standard for a similar case type is adopted if appropriate.

Criminal: 90% by 4 months, 98% by 6 months, 100% by 9 months.

Civil: 90% by 12 months, 98% by 18 months, 100% by 24 months.

Domestic: 90% by 8 months, 98% by 10 months, 100% by 14 months.

Probate/Guardianship: 90% by 8 months, 98% by 18 months, 100% by 36 months.

Adoption/Paternity: 90% by 8 months, 98% by 10 months, 100% by 14 months.

Mental Illness/Juvenile Truancy: No standard yet.

Juvenile Dependency: 90% by 8 months, 98% by 10 months, 100% by 14 months.

Juvenile Offender: 90% by 4 months, 98% by 6 months, 100% by 9 months.

Criminal RALJ/Civil RALJ: 90% by 4 months, 98% by 5 months, 100% by 6 months.

Criminal - Resolved by Jury Trial

Acquittal by Jury (AQJV)
Convicted - Jury Verdict after Trial (CVJV)

Criminal - Resolved by Non-Jury Trial

Acquittal by Court (AQCT)
Convicted - Court Decision after Non-Jury Trial (CVCT)

Criminal - Resolved by Guilty Plea

Guilty Plea (GP)
Guilty Plea after Non-Jury Trial Commencement (GPAT)
Guilty Plea after Jury Trial Commencement (GPJT)

Criminal - Dismissal

Dismissal after Non-Jury Trial Commencement (DAT)
Dismissal after Jury Trial Commencement (DJT)
Dismissal (DSM)

Criminal - Others

Change of Venue (CHV)
Consolidated Case (CONS)
Continued Order of Prosecution with Completion (CTOP)*
Deferred Prosecution (DFPD)
Dismissal/Closure by Clerk (DSCK)
Governor’s warrant (GW)
Not Guilty by Reason of Insanity (NGRI)
Uncontested Resolution (UNDS)
Waiver of Extradition (WE)
Other Non-specified Resolutions

* Note: For adult criminal cases, “CTOP” does not necessarily constitute resolution. An adult criminal case with a “CTOP” as resolution code is counted as a resolved case only if a completion code exists along with the “CTOP”. If the resolution code is CTOP and there is no completion code, then the case is treated as unresolved. The primary reason for combining “CTOP” with a completion code is to determine resolution for drug court cases (CTOP is entered in the SCOMIS resolution field as soon as a defendant enrolls in

Drug Court). This rule on “CTOP” applies to adult criminal cases only.

Criminal RALJ - RALJ Decision

Court Decision to Affirm Appeal/review (CDTA)
Court Decision to Modify Appeal/Review (CDTM)
Court Decision to Reverse Appeal/review (CDTR)

Criminal RALJ - Dismissal

Dismissal and Remand of Appeal/Review (DSRM)

Criminal RALJ - Others

Other Non-specified Resolutions

Domestic - Resolved by Trial

Court Decision after Non-Jury Trial (CDAT)

Domestic - Default/Uncontested

Consolidated Case (CONS)
Default Judgment (DFJG)
Uncontested Resolution (UNDS)

Domestic - Settlement/Dismissal

Settled by Arbitration (ARBA)
Closed by Court Order after a Hearing (CLCO)
Dismissal after Non-Jury Trial Commencement (DAT)
Dismissal (DSM)
Settled after Non-Jury Trial Commencement (SAT)
Settled by Parties/Agreed Judgment (STPR)

Domestic - Closure by Clerk

Dismissal/Closure by Clerk (DSCK)

Domestic - Others

Change of Venue/Jurisdiction (CHV)
Summary Judgment (SMJG)
Other Non-specified Resolutions

Guardianship - Guardian Appointed

Guardian Appointed (PRGA)

Guardianship - Dismissal

Closed by Court Order after a Hearing (CLCO)
Dismissal (DSM)

Guardianship - Closure by Clerk

Dismissal/Closure by Clerk (DSCK)

Guardianship - Others

Change of Venue/Jurisdiction (CHV)
Consolidated Case (CONS)
Uncontested Resolution (UNDS)
Other Non-specified Resolutions

Juvenile Dependency - Finding of Dependency

Approved Petition (APP)

Juvenile Dependency - Dismissal

Dismissal (DSM)

Juvenile Dependency - Others

Change of Venue/Jurisdiction (CHV)
Consolidated Case (CONS)
Transfer of Jurisdiction (TRJU)
Other Non-specified Resolutions

Juvenile Offender - Resolved by Trial

Acquittal by Court (AQCT)
Convicted - Court Decision after Adjudicatory Hearing (CVCT)

Juvenile Offender - Resolved by Guilty Plea

Guilty Plea before Adjudicatory Hearing Commencement (GP)
Guilty Plea after Adjudicatory Hearing Commencement (GPAT)

Juvenile Offender - Dismissal

Dismissal after Adjudicatory Hearing Commencement (DAT)

Dismissal (DSM)

Juvenile Offender - Others

Change of venue (CHV)
Dismissal/Closure by Clerk (DSCK)
Consolidated Case (CONS)

Continued Prosecution (CTOP)

Decline of Jurisdiction (DECL)

Uncontested Resolution (UNDS)

Other Non-specified Resolutions

Juvenile Truancy - Finding of Truancy

Approved Petition (APP)

Juvenile Truancy - Dismissal

Dismissal (DSM)

Juvenile Truancy - Others

Change of Venue (CHV)
Consolidated Case (CONS)
Transfer of Jurisdiction (TRJU)
Other Non-specified Resolutions

ITA - Court Decision to Commit

Court Decision to Commit (CDTC)

ITA - Closed by Court

Closed by Court (CLCO)

ITA - Dismissal

Dismissal (DSM)

ITA - Others

Change of Venue/Jurisdiction (CHV)
Uncontested Resolution (UNDS)
Other Non-specified Resolutions

Paternity - Resolved by Trial

Court Decision after Non-Jury Trial (CDAT)

Paternity - Summary Judgment

Summary Judgment (SMJG)

Paternity - Default/Uncontested

Consolidated Case (CONS)
Default Judgment (DFJG)
Uncontested Resolution (UNDS)

Paternity - Settlement/Dismissal

Settled by Arbitration (ARBA)
Closed by Court Order after a Hearing (CLCO)
Dismissal after Non-Jury Trial Commencement (DAT)
Dismissal (DSM)
Settled after Non-Jury Trial Commencement (SAT)
Settled by Partied/Agreed Judgment (STPR)

Paternity - Closure by Clerk

Dismissal/Closure by Clerk (DSCK)

Paternity - Others

Change of Venue (CHV)
Other Non-specified Resolutions

Percentile

Percent of cases resolved at a given age. For example, if resolved cases had a 98 percentile of 12 months, it means that 98% of the cases were resolved within the age of 12 months, or conversely 2% of the cases were resolved after 12 months, not counting suspense time.

Probate - Personal Representative Appointed

Non-Intervention Probate (NIP)
Personal Representative Appointed (PRGA)

Probate - Dismissal

Closed by Court Order after a Hearing (CLCO)
Dismissal (DSM)

Probate - Closure by Clerk

Dismissal/Closure by Clerk (DSCK)

Probate - Others

Change of Venue (CHV)
Consolidated Case (CONS)
Uncontested Resolution (UNDS)
Other Non-specified Resolutions

Backlogged Cases

Active pending cases with an age exceeding the court-adopted time standard for each specific case type (recommended by the State Advisory Committee, see definition for *Court Standard*).

Section III. Pending Caseload

Adjustment

Adjustment made because of vacating of resolutions, or change in suspense status between two reporting period.

End Pending

Total number of pending cases at the end of reporting period.

Previous Pending

Total number of pending cases at the beginning of reporting period.

Resolution Rate

Resolution rate is defined as the ratio of number of resolutions to number of new filings (i.e., number of resolutions divided by number of new filings) during the reporting period. The resolution rate measures the relative pace of resolution in relation to the pace of new filings. A resolution rate of greater than 1 indicates the number of resolutions exceeds the number of new filings.

On-review Status

Cases that have been resolved (post-resolution) but still need court resources for periodic review and other remaining outstanding issues.

Probate (EST), Paternity (PAT) and Dependency (DEP): Resolved and not completed (paternity or dependency established, but outstanding issues remain).

Guardianship (GDN,LGD,G/E): Resolved and on tracks of G1,G2,G3,GE or GD; Minor Settlement (MST): Resolved with a future hearing date.

Section IV. Age of Pending Cases

Case Age

The age of a case is the time (number of days) since the filing date, less any suspense time if applicable.

Median Age

The median age is the time that 50% of the cases are under and 50% are above the given age. For example, if pending cases have a median age of 12 months, it means that 50% of the pending cases are within the age of 12 months, and 50% of pending cases are over 12 months. The median age is more robust to cases with extreme age values than the average age.

Suspense Time

Time (days) that a case is on suspense status before its resolution. If a case has more than one suspense between filing and resolution, the suspense time is the total from all suspense. Time on suspense status after resolution (e.g., appeals) is not counted.