

King County Superior Court  
Quarterly Statistical Report

Fourth Quarter 2017

Department of Judicial Administration  
Prepared by: Shiquan Liao, Ph.D., Statistician

*Release Date: January 20, 2018*

**Report #: QTR-2017-04**

Table 1. Year-to-Date Filing Activity

King County Superior Court

Reporting Category	Year-to-Date and Annual Filing Activity <sup>(1)</sup>					2016-2017 change (+ means "increase")		% of 2017 Total Filing <sup>(2)</sup>
	2013	2014	2015	2016	2017	Cases	Percentage	
<b>Total (incl. RALJ)</b>								
Year-to-Date Filing	52755	52224	51652	51472	53115	+1643	+3.1%	
Annual Filing	52755	52224	51652	51472				
<b>Criminal (excl. RALJ)</b>								
Year-to-Date Filing	6045	6213	6237	6632	6441	-191	-2.9%	12.1%
Annual Filing	6045	6213	6237	6632				
<b>General Civil (excl. Asbestos)</b>								
Year-to-Date Filing	22347	21378	21181	21181	21497	+316	+1.5%	40.5%
Annual Filing	22347	21378	21181	21181				
<b>Asbestos Cases (civil) <sup>(3)</sup></b>								
Year-to-Date Filing	63	40	36	41	20	-21	-51.2%	0.0%
Annual Filing	63	40	36	41				
<b>Domestic</b>								
Year-to-Date Filing	7897	7921	7559	7512	7597	+85	+1.1%	14.3%
Annual Filing	7897	7921	7559	7512				
<b>Probate</b>								
Year-to-Date Filing	5844	5920	6002	6073	6418	+345	+5.7%	12.1%
Annual Filing	5844	5920	6002	6073				
<b>Guardianship</b>								
Year-to-Date Filing	884	928	969	1008	949	-59	-5.9%	1.8%
Annual Filing	884	928	969	1008				
<b>Adoption</b>								
Year-to-Date Filing	483	470	460	458	546	+88	+19.2%	1.0%
Annual Filing	483	470	460	458				
<b>Paternity</b>								
Year-to-Date Filing	931	702	650	528	539	+11	+2.1%	1.0%
Annual Filing	931	702	650	528				
<b>ITA – Civil Commitment</b>								
Year-to-Date Filing	3678	3852	4004	4152	4694	+542	+13.1%	8.8%
Annual Filing	3678	3852	4004	4152				
<b>Juvenile Dependency (DEP)</b>								
Year-to-Date Filing	893	940	848	727	793	+66	+9.1%	1.5%
Annual Filing	893	940	848	727				
<b>Juvenile Termination (TER)</b>								
Year-to-Date Filing	209	325	214	219	304	+85	+38.8%	0.6%
Annual Filing	209	325	214	219				
<b>Juvenile ARY/CHINS/OTHERS</b>								
Year-to-Date Filing	168	285	217	247	245	-2	-0.8%	0.5%
Annual Filing	168	285	217	247				
<b>Juvenile Truancy</b>								
Year-to-Date Filing	1236	1233	1369	1222	1547	+325	+26.6%	2.9%
Annual Filing	1236	1233	1369	1222				
<b>Juvenile Offender</b>								
Year-to-Date Filing	1808	1802	1649	1295	1324	+29	+2.2%	2.5%
Annual Filing	1808	1802	1649	1295				
<b>Criminal RALJ</b>								
Year-to-Date Filing	181	172	180	111	136	+25	+22.5%	0.3%
Annual Filing	181	172	180	111				
<b>Civil RALJ</b>								
Year-to-Date Filing	53	47	57	66	65	-1	-1.5%	0.1%
Annual Filing	53	47	57	66				
<b>Matters Filed with Clerk <sup>(4)</sup></b>								
Year-to-Date Filing	13763	12240	9581	8742	10903	+2161	+24.7%	
Annual Filing	13763	12240	9581	8742				

(1) New filings only (based on filing date), excluding re-opened cases (unable to count), and reflecting all documents received by 01/15/2018.

(2) New filings of each reporting category as percentage of "Year-to-Date Filing".

(3) "Matters Filed with Clerk" and "Additional Filings with Clerk" are not included in the "Total".

Chart 1-A. Quarterly Filing Activity  
Total Judicial Cases Only ("Matters Filed with Clerk" excluded)

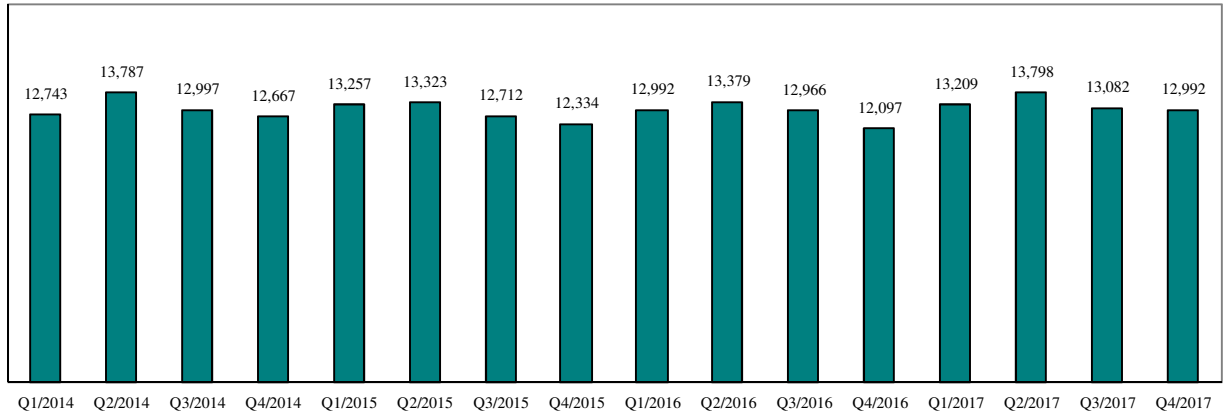
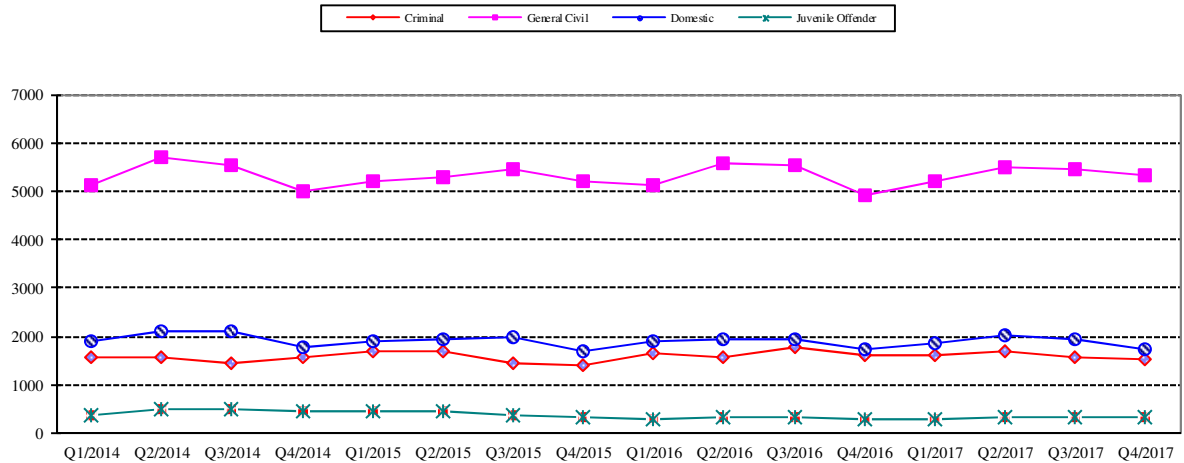


Chart 1-B. Quarterly Filings: Criminal, Domestic, General Civil and Juvenile Offender Cases Only



\* Note: "General Civil" is specifically defined in this report. The category of "General Civil" does **not** include the following case types: domestic, probate, guardianship, adoption, paternity, ITA (civil commitment), juvenile cases (dependency, at-risk youth, child-in-need of service, civil RALJ, and tax filings that don't require judicial resources ("matters filed with clerk")). Please check the Appendix for the cause codes in the "General Civil" category.

Table 1-A. Post-Resolution Modifications (Domestic and Paternity Cases)

*Based on Tracks Opened After Original Resolution Date*

		2015Q1			2015Q2			2015Q3			2015Q4			Year 2015		
Location	Case Type	DMOD	DTBA	Total	DMOD	DTBA	Total	DMOD	DTBA	Total	DMOD	DTBA	Total	DMOD	DTBA	Total
KNT	Domestic	166	37	203	188	49	237	168	31	199	166	32	198	688	149	837
	Paternity	14	4	18	18	8	26	15	3	18	8	6	14	55	21	76
<b>KNT Total</b>		<b>180</b>	<b>41</b>	<b>221</b>	<b>206</b>	<b>57</b>	<b>263</b>	<b>183</b>	<b>34</b>	<b>217</b>	<b>174</b>	<b>38</b>	<b>212</b>	<b>743</b>	<b>170</b>	<b>913</b>
SEA	Domestic	150	56	206	145	85	230	171	44	215	146	49	195	612	234	846
	Paternity	8	8	16	8	7	15	7	8	15	5	4	9	28	27	55
<b>SEA Total</b>		<b>158</b>	<b>64</b>	<b>222</b>	<b>153</b>	<b>92</b>	<b>245</b>	<b>178</b>	<b>52</b>	<b>230</b>	<b>151</b>	<b>53</b>	<b>204</b>	<b>640</b>	<b>261</b>	<b>901</b>
<b>KNT/SEA Total</b>		<b>338</b>	<b>105</b>	<b>443</b>	<b>359</b>	<b>149</b>	<b>508</b>	<b>361</b>	<b>86</b>	<b>447</b>	<b>325</b>	<b>91</b>	<b>416</b>	<b>1383</b>	<b>431</b>	<b>1814</b>
		2016Q1			2016Q2			2016Q3			2016Q4			Year 2016		
Location	Case Type	DMOD	DTBA	Total	DMOD	DTBA	Total	DMOD	DTBA	Total	DMOD	DTBA	Total	DMOD	DTBA	Total
KNT	Domestic	174	29	203	167	56	223	204	32	236	179	34	213	724	151	875
	Paternity	16	6	22	12	6	18	12	3	15	8	4	12	48	19	67
<b>KNT Total</b>		<b>190</b>	<b>35</b>	<b>225</b>	<b>179</b>	<b>62</b>	<b>241</b>	<b>216</b>	<b>35</b>	<b>251</b>	<b>187</b>	<b>38</b>	<b>225</b>	<b>772</b>	<b>170</b>	<b>942</b>
SEA	Domestic	154	71	225	154	76	230	173	51	224	133	65	198	614	263	877
	Paternity	6	9	15	11	8	19	14	7	21	14	2	16	45	26	71
<b>SEA Total</b>		<b>160</b>	<b>80</b>	<b>240</b>	<b>165</b>	<b>84</b>	<b>249</b>	<b>187</b>	<b>58</b>	<b>245</b>	<b>147</b>	<b>67</b>	<b>214</b>	<b>659</b>	<b>289</b>	<b>948</b>
<b>KNT/SEA Total</b>		<b>350</b>	<b>115</b>	<b>465</b>	<b>344</b>	<b>146</b>	<b>490</b>	<b>403</b>	<b>93</b>	<b>496</b>	<b>334</b>	<b>105</b>	<b>439</b>	<b>1431</b>	<b>459</b>	<b>1890</b>
		2017Q1			2017Q2			2017Q3			2017Q4			Year 2017		
Location	Case Type	DMOD	DTBA	Total	DMOD	DTBA	Total	DMOD	DTBA	Total	DMOD	DTBA	Total	DMOD	DTBA	Total
KNT	Domestic	172	30	202	218	57	275	170	23	193	171	32	203	731	142	873
	Paternity	9	5	14	9	6	15	19	2	21	13	2	15	50	15	65
<b>KNT Total</b>		<b>181</b>	<b>35</b>	<b>216</b>	<b>227</b>	<b>63</b>	<b>290</b>	<b>189</b>	<b>25</b>	<b>214</b>	<b>184</b>	<b>34</b>	<b>218</b>	<b>781</b>	<b>157</b>	<b>938</b>
SEA	Domestic	151	54	205	170	86	256	176	53	229	166	55	221	663	248	911
	Paternity	9	3	12	16	8	24	15	1	16	11	4	15	51	16	67
<b>SEA Total</b>		<b>160</b>	<b>57</b>	<b>217</b>	<b>186</b>	<b>94</b>	<b>280</b>	<b>191</b>	<b>54</b>	<b>245</b>	<b>177</b>	<b>59</b>	<b>236</b>	<b>714</b>	<b>264</b>	<b>978</b>
<b>KNT/SEA Total</b>		<b>341</b>	<b>92</b>	<b>433</b>	<b>413</b>	<b>157</b>	<b>570</b>	<b>380</b>	<b>79</b>	<b>459</b>	<b>361</b>	<b>93</b>	<b>454</b>	<b>1495</b>	<b>421</b>	<b>1916</b>

\* DMOD = parenting plan modification track; DTBA = support modification track.

Correction for the first two quarters was made in September 2017.

Table 2. Number of Cases Resolved and Resolution Category (%)

King County Superior Court

Reporting Category	Q1/16	Q2/16	Q3/16	Q4/16	Q1/17	Q2/17	Q3/17	Q4/17*
<b>Total Resolutions (excl. "Matters Filed with Clerk")</b>	<b>13113</b>	<b>13387</b>	<b>13274</b>	<b>12665</b>	<b>13067</b>	<b>13367</b>	<b>13411</b>	<b>13521</b>
<b>Criminal (excl. RALJ): # Resolved</b>	<b>1529</b>	<b>1444</b>	<b>1483</b>	<b>1432</b>	<b>1554</b>	<b>1536</b>	<b>1519</b>	<b>1550</b>
Resolved by Jury Trial	4.3%	2.3%	2.5%	2.9%	3.3%	3.0%	3.6%	3.3%
Resolved by Non-Jury Trial	1.1%	1.0%	0.9%	0.1%	0.3%	0.5%	0.9%	0.6%
Resolved by Guilty Plea	80.1%	81.1%	80.3%	80.9%	79.5%	78.3%	79.3%	78.5%
Dismissal	13.8%	15.0%	15.5%	15.0%	15.8%	16.5%	15.0%	16.8%
Others	0.2%	0.6%	0.7%	1.1%	1.1%	1.6%	1.3%	0.9%
<b>General Civil: # Resolved</b>	<b>5435</b>	<b>5872</b>	<b>5628</b>	<b>5301</b>	<b>5516</b>	<b>5608</b>	<b>5673</b>	<b>5745</b>
Resolved by Jury Trial	0.6%	0.4%	0.5%	0.6%	0.2%	0.5%	0.5%	0.5%
Resolved by Non-Jury Trial	0.3%	0.4%	0.5%	0.3%	0.6%	0.4%	0.5%	0.5%
Summary Judgment	2.0%	2.0%	1.6%	1.6%	2.1%	2.2%	2.0%	1.8%
Default/ Uncontested	38.1%	40.2%	40.4%	38.3%	38.6%	38.0%	39.2%	39.8%
Arbitration	3.1%	3.3%	2.7%	3.2%	2.9%	3.1%	2.9%	3.0%
Settlement/Dismissal	52.6%	50.6%	49.4%	51.3%	51.9%	53.3%	51.5%	51.6%
Closure by Clerk	2.6%	2.5%	4.3%	3.4%	2.8%	1.5%	2.5%	2.0%
Others	0.8%	0.7%	0.8%	1.3%	1.1%	1.1%	1.0%	0.9%
<b>Asbestos Cases (civil): # Resolved</b>	<b>9</b>	<b>14</b>	<b>8</b>	<b>16</b>	<b>9</b>	<b>7</b>	<b>8</b>	<b>8</b>
Resolved by Jury Trial	11.1%	0.0%	12.5%	0.0%	0.0%	0.0%	0.0%	0.0%
Resolved by Non-Jury Trial	0.0%	0.0%	0.0%	0.0%	0.0%	0.0%	0.0%	12.5%
Summary Judgment	22.2%	0.0%	0.0%	0.0%	0.0%	28.6%	0.0%	12.5%
Default/ Uncontested	0.0%	7.1%	12.5%	6.3%	0.0%	28.6%	0.0%	12.5%
Arbitration	0.0%	0.0%	0.0%	0.0%	0.0%	0.0%	0.0%	0.0%
Settlement/Dismissal	55.6%	85.7%	62.5%	87.5%	66.7%	42.9%	87.5%	62.5%
Closure by Clerk	11.1%	7.1%	12.5%	6.3%	33.3%	0.0%	12.5%	0.0%
Others	0.0%	0.0%	0.0%	0.0%	0.0%	0.0%	0.0%	0.0%
<b>Domestic: # Resolved</b>	<b>1810</b>	<b>1895</b>	<b>1881</b>	<b>1924</b>	<b>1829</b>	<b>1930</b>	<b>1902</b>	<b>1935</b>
Resolved by Trial	4.0%	4.6%	4.8%	3.7%	4.1%	4.2%	3.8%	3.0%
Default/ Uncontested	10.1%	9.8%	10.2%	8.5%	9.4%	9.4%	8.6%	9.2%
Settlement /Dismissal	84.5%	84.3%	84.2%	86.6%	85.8%	84.9%	86.5%	87.0%
Closure by Clerk	0.8%	0.6%	0.4%	0.4%	0.4%	0.4%	0.4%	0.4%
Others	0.6%	0.6%	0.5%	0.7%	0.4%	1.2%	0.7%	0.4%
<b>Probate: # Resolved</b>	<b>1561</b>	<b>1549</b>	<b>1473</b>	<b>1387</b>	<b>1680</b>	<b>1670</b>	<b>1472</b>	<b>1422</b>
Personal Rep. Appointed	72.7%	72.3%	71.6%	70.7%	74.1%	73.4%	72.5%	74.6%
Dismissal	2.6%	2.8%	3.7%	2.7%	1.7%	4.1%	2.6%	2.1%
Closure by Clerk	0.1%	0.0%	0.0%	0.0%	0.0%	0.0%	0.0%	0.6%
Others	24.6%	24.9%	24.7%	26.6%	24.3%	22.6%	24.9%	22.6%
<b>Guardianship: # Resolved</b>	<b>220</b>	<b>258</b>	<b>265</b>	<b>231</b>	<b>232</b>	<b>231</b>	<b>230</b>	<b>212</b>
Guardian Appointed	55.5%	55.8%	47.6%	56.3%	50.9%	47.2%	53.5%	59.9%
Dismissal	43.2%	43.0%	51.7%	42.4%	48.3%	51.1%	45.2%	36.8%
Closure by Clerk	0.0%	0.0%	0.0%	0.0%	0.0%	0.0%	0.0%	0.9%
Others	1.4%	1.2%	0.8%	1.3%	0.9%	1.7%	1.3%	2.4%
<b>Adoption: # Resolved</b>	<b>116</b>	<b>113</b>	<b>104</b>	<b>140</b>	<b>86</b>	<b>145</b>	<b>130</b>	<b>166</b>
Resolved by Trial	0.0%	0.9%	0.0%	0.0%	0.0%	0.0%	0.8%	0.0%
Uncontested	9.5%	6.2%	3.9%	2.1%	3.5%	2.8%	2.3%	4.8%
Settlement /Dismissal	90.5%	92.9%	96.2%	97.9%	96.5%	97.2%	96.2%	95.2%
Closure by Clerk	0.0%	0.0%	0.0%	0.0%	0.0%	0.0%	0.0%	0.0%
Others	0.0%	0.0%	0.0%	0.0%	0.0%	0.0%	0.8%	0.0%
<b>Paternity: # Resolved</b>	<b>171</b>	<b>140</b>	<b>141</b>	<b>121</b>	<b>127</b>	<b>150</b>	<b>158</b>	<b>109</b>
Resolved by Trial	1.2%	2.1%	1.4%	1.7%	0.8%	0.7%	3.8%	2.8%
Summary Judgment	52.1%	39.3%	52.5%	43.8%	52.8%	50.0%	51.3%	38.5%
Default/ Uncontested	17.0%	25.7%	17.7%	20.7%	20.5%	18.7%	17.7%	23.9%
Settlement/Dismissal	29.8%	32.9%	27.7%	33.9%	26.0%	30.7%	27.2%	34.9%
Closure by Clerk	0.0%	0.0%	0.0%	0.0%	0.0%	0.0%	0.0%	0.0%
Others	0.0%	0.0%	0.7%	0.0%	0.0%	0.0%	0.0%	0.0%

Reflecting all documents received by 01/15/2018.

Table 2 (cont.). Number of Cases Resolved and Resolution Category (%)

## King County Superior Court

Reporting Category	Q1/16	Q2/16	Q3/16	Q4/16	Q1/17	Q2/17	Q3/17	Q4/17*
<b>ITA (civil commitment): # Resolved</b>	<b>1014</b>	<b>1034</b>	<b>1085</b>	<b>1045</b>	<b>1073</b>	<b>1157</b>	<b>1206</b>	<b>1174</b>
Court Decision to Commit	64.2%	65.3%	63.0%	59.3%	60.5%	57.6%	60.0%	58.6%
Closed by Court	0.0%	0.0%	0.0%	0.0%	0.0%	0.0%	0.0%	0.0%
Dismissal	20.6%	21.3%	16.7%	26.1%	24.0%	25.4%	19.6%	16.4%
Others	15.2%	13.4%	20.3%	14.6%	15.6%	17.0%	20.5%	25.0%
<b>Juv. Dependency: # Resolved</b>	<b>172</b>	<b>187</b>	<b>397</b>	<b>140</b>	<b>164</b>	<b>195</b>	<b>216</b>	<b>172</b>
Finding of Dependency	72.9%	81.8%	87.4%	77.9%	78.7%	78.5%	74.5%	76.2%
Dismissal	26.7%	18.2%	12.3%	22.1%	21.3%	21.5%	25.5%	23.3%
Others	1.2%	0.0%	0.3%	0.0%	0.0%	0.0%	0.0%	0.6%
<b>Juv. Terminations: # Resolved</b>	<b>62</b>	<b>48</b>	<b>103</b>	<b>49</b>	<b>50</b>	<b>56</b>	<b>72</b>	<b>51</b>
Finding of Dependency	74.2%	79.2%	95.2%	81.6%	90.0%	80.4%	88.9%	82.4%
Dismissal	25.8%	20.8%	4.8%	18.4%	10.0%	19.6%	11.1%	17.7%
Others	0.0%	0.0%	0.0%	0.0%	0.0%	0.0%	0.0%	0.0%
<b>Juv. ARY/CHINS/OTHER:# Resolved</b>	<b>63</b>	<b>45</b>	<b>93</b>	<b>70</b>	<b>37</b>	<b>41</b>	<b>101</b>	<b>48</b>
Approve of Petition	38.1%	28.9%	55.9%	62.8%	35.1%	24.4%	36.6%	33.3%
Dismissal	61.9%	71.1%	44.1%	37.2%	59.5%	68.3%	63.4%	66.7%
Others	0.0%	0.0%	0.0%	0.0%	5.4%	7.3%	0.0%	0.0%
<b>Juvenile Truancy: # Resolved</b>	<b>524</b>	<b>324</b>	<b>151</b>	<b>387</b>	<b>351</b>	<b>285</b>	<b>343</b>	<b>552</b>
Approve of Petition	5.0%	0.6%	7.3%	23.5%	3.4%	2.5%	0.6%	0.2%
Dismissal	95.0%	99.4%	92.7%	76.5%	96.6%	97.5%	99.4%	99.8%
Others	0.0%	0.0%	0.0%	0.0%	0.0%	0.0%	0.0%	0.0%
<b>Juvenile Offender: # Resolved</b>	<b>364</b>	<b>413</b>	<b>398</b>	<b>373</b>	<b>310</b>	<b>316</b>	<b>339</b>	<b>330</b>
Resolved by Trial (Fact Finding)	1.4%	4.6%	1.0%	3.5%	3.3%	4.1%	2.7%	2.4%
Resolved by Guilty Plea	37.4%	36.3%	34.4%	33.0%	35.2%	35.4%	37.8%	37.3%
Dismissal	40.9%	43.1%	43.2%	40.5%	37.7%	38.6%	36.9%	42.7%
Deferred Disposition (DDSP)	15.1%	12.6%	15.8%	17.4%	18.7%	17.4%	17.1%	13.0%
Others (including Deferred Prosecution)	5.2%	3.4%	5.5%	5.6%	5.2%	4.4%	5.6%	4.6%
<b>Criminal RALJ: # Resolved</b>	<b>48</b>	<b>39</b>	<b>40</b>	<b>33</b>	<b>30</b>	<b>34</b>	<b>32</b>	<b>33</b>
RALJ Decision	58.3%	79.5%	82.5%	66.7%	76.7%	70.6%	53.1%	66.7%
Dismissal	35.4%	10.3%	10.0%	15.2%	20.0%	17.7%	46.9%	30.3%
Others	6.3%	10.3%	7.5%	18.2%	3.3%	11.8%	0.0%	3.0%
<b>Civil RALJ: # Resolved</b>	<b>15</b>	<b>12</b>	<b>24</b>	<b>16</b>	<b>19</b>	<b>15</b>	<b>10</b>	<b>14</b>
RALJ Decision	46.7%	50.0%	37.5%	50.0%	36.8%	53.3%	60.0%	42.9%
Dismissal	46.7%	41.7%	25.0%	18.8%	42.1%	33.3%	40.0%	50.0%
Others	6.7%	8.3%	37.5%	31.3%	21.1%	13.3%	0.0%	7.1%

\* Reflecting all documents received by 01/15/2018.

Chart 2-A. Quarterly Resolutions  
Total Judicial Cases Only ("Matters Filed with Clerk" excluded)

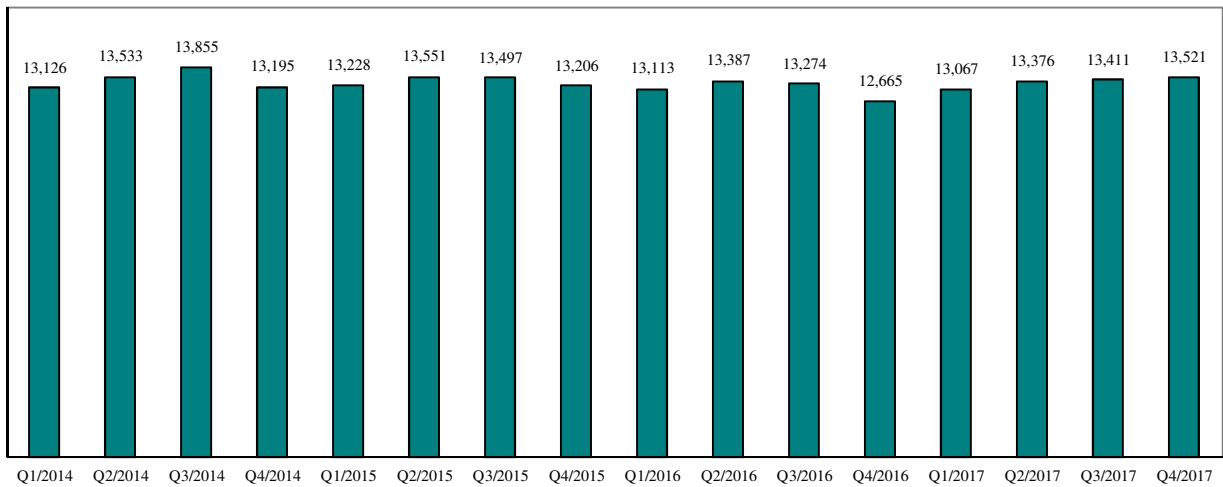
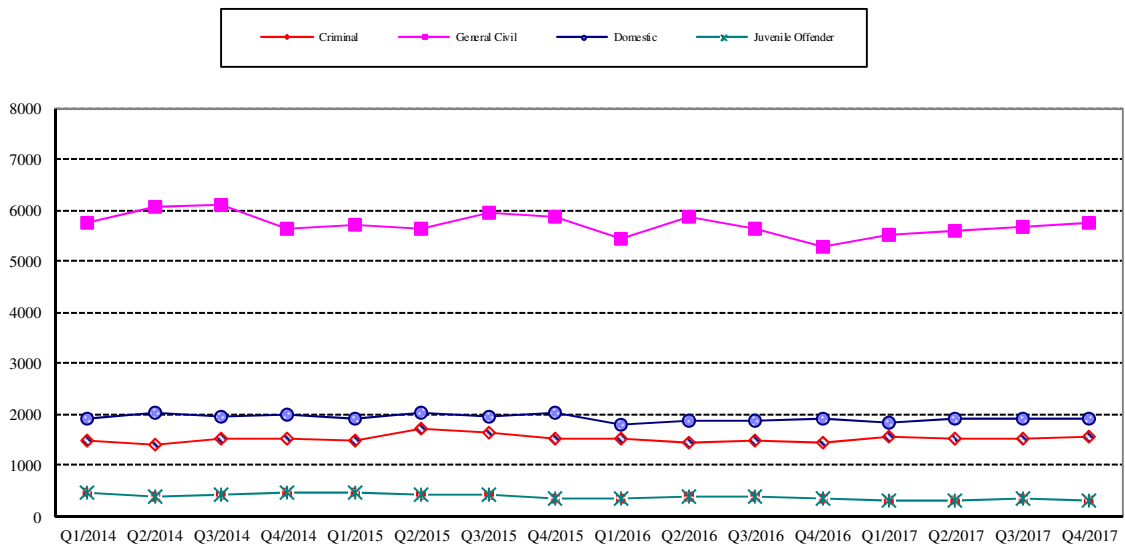


Chart 2-B. Quarterly Resolutions: Criminal, Dmestic, General Civil and Juvenile Offender Cases Only



\* Note: "General Civil" is specifically defined in this report. The category of "General Civil" does **not** include the following case types: domestic, probate, guardianship, adoption, paternity, mental illness, juvenile cases (dependency, at-risk youth, child-in-need of service), civil RALJ, and tax filings that don't require judicial resources ("matters filed with clerk"). Please check the Appendix for the cause codes in the "General Civil" category.

Table 3. Age of Resolved Cases  
King County Superior Court

Reporting Category	Age of Cases at Resolution							
	Q1/16	Q2/16	Q3/16	Q4/16	Q1/17	Q2/17	Q3/17	Q4/17*
<b>Criminal (excl. RALJ)</b>								
Age (days)								
50% Cases Resolved by Day	120	111	108	112	127	125	126	132
90% Cases Resolved by Day	364	346	328	317	371	371	361	408
<b>Comparison with Court Standard of</b>								
90% in 4 months	50%	54%	56%	53%	47%	49%	48%	46%
98% in 6 months	69%	71%	74%	71%	65%	65%	67%	64%
100% in 9 months	84%	86%	86%	87%	81%	81%	81%	81%
<b>General Civil <sup>(1)</sup></b>								
Age (days)								
50% Cases Resolved by Day	38	33	28	42	40	41	40	42
90% Cases Resolved by Day	388	368	357	357	367	366	358	357
<b>Comparison with Court Standard of</b>								
90% in 12 months	86%	89%	92%	89%	90%	88%	91%	91%
98% in 18 months	96%	97%	98%	97%	98%	97%	98%	97%
100% in 24 months	99%	99%	99%	99%	99%	99%	99%	99%
<b>Domestic</b>								
Age (days)								
50% Cases Resolved by Day	176	172	147	154	172	144	146	140
90% Cases Resolved by Day	378	372	371	368	383	372	381	397
<b>Comparison with Court Standard of</b>								
90% in 8 months	61%	61%	66%	65%	62%	68%	67%	68%
98% in 10 months	73%	75%	78%	78%	76%	78%	76%	78%
100% in 14 months	92%	94%	94%	94%	94%	94%	91%	92%
<b>Probate</b>								
Age (days)								
50% Cases Resolved by Day	0	0	0	0	0	0	0	0
90% Cases Resolved by Day	12	13	24	8	4	22	15	13
<b>Comparison with Court Standard of</b>								
90% in 8 months	97%	97%	98%	96%	98%	97%	98%	97%
98% in 18 months	100%	99%	99%	99%	99%	99%	99%	99%
100% in 36 months	100%	100%	100%	100%	99%	100%	99%	99%
<b>Guardianship</b>								
Age (days)								
50% Cases Resolved by Day	70	68	71	65	73	63	69	63
90% Cases Resolved by Day	162	240	273	208	334	304	284	178
<b>Comparison with Court Standard of</b>								
90% in 8 months	96%	91%	85%	94%	85%	88%	88%	94%
98% in 18 months	100%	99%	98%	100%	97%	98%	99%	99%
100% in 36 months	100%	100%	100%	100%	100%	100%	100%	100%
<b>Adoption</b>								
Age (days)								
50% Cases Resolved by Day	62	66	99	69	55	61	79	53
90% Cases Resolved by Day	499	444	714	257	437	227	376	262
<b>Comparison with Court Standard of</b>								
90% in 8 months	80%	86%	68%	87%	83%	89%	82%	88%
98% in 10 months	84%	86%	79%	94%	84%	92%	85%	93%
100% in 14 months	89%	85%	81%	99%	88%	95%	91%	96%
<b>Paternity</b>								
Age (days)								
50% Cases Resolved by Day	164	142	172	154	143	141	140	126
90% Cases Resolved by Day	306	307	296	367	291	317	335	328
<b>Comparison with Court Standard of</b>								
90% in 8 months	73%	79%	71%	71%	82%	82%	79%	75%
98% in 10 months	88%	89%	92%	82%	93%	87%	87%	86%
100% in 14 months	97%	98%	97%	96%	99%	95%	95%	94%



Table 3 (cont.) Age of Resolved Cases

King County Superior Court

Reporting Category	Age of Cases at Resolution							
	Q1/16	Q2/16	Q3/16	Q4/16	Q1/17	Q2/17	Q3/17	Q4/17*
<b>ITA (civil commitment) **</b>								
Age (days)								
50% Cases Resolved by Day	3	4	4	4	4	4	4	4
90% Cases Resolved by Day	15	12	15	13	14	14	18	21
<b>Juvenile Dependency (DEP)</b>								
Age (days)								
50% Cases Resolved by Day	85	104	278	132	112	124	153	127
90% Cases Resolved by Day	218	230	570	283	232	268	389	379
<b>Comparison with Court Standard of</b>								
90% in 8 months	92%	93%	46%	85%	90%	82%	74%	82%
98% in 10 months	97%	96%	60%	90%	94%	90%	81%	87%
100% in 14 months	99%	96%	77%	96%	99%	95%	93%	90%
<b>Juvenile Termination (TER)</b>								
Age (days)								
50% Cases Resolved by Day	163	259	272	182	131	84	141	143
90% Cases Resolved by Day	406	665	680	679	437	453	445	621
<b>Comparison with Court Standard of</b>								
90% in 8 months	68%	45%	45%	63%	72%	81%	70%	73%
98% in 10 months	81%	61%	61%	68%	76%	83%	70%	73%
100% in 14 months	92%	69%	73%	72%	90%	89%	89%	73%
<b>Juv ARY/CHINS/OTHER</b>								
Age (days)								
50% Cases Resolved by Day	55	53	208	60	57	54	224	42
90% Cases Resolved by Day	294	230	730	338	230	223	3526	252
<b>Comparison with Court Standard of</b>								
90% in 8 months	86%	96%	58%	86%	91%	95%	58%	85%
98% in 10 months	91%	98%	62%	86%	97%	95%	64%	95%
100% in 14 months	94%	100%	74%	93%	100%	100%	69%	100%
<b>Juvenile Truancy**</b>								
Age (days)								
50% Cases Resolved by Day	341	371	483	320	343	394	436	230
90% Cases Resolved by Day	493	514	591	608	456	777	1183	1093
<b>Juvenile Offender</b>								
Age (days)								
50% Cases Resolved by Day	99	112	90	93	94	86	85	89
90% Cases Resolved by Day	235	340	309	340	245	261	254	251
<b>Comparison with Court Standard of</b>								
90% in 4 months	60%	53%	60%	61%	59%	65%	63%	68%
98% in 6 months	79%	73%	79%	75%	78%	79%	80%	82%
100% in 9 months	95%	87%	87%	87%	92%	91%	92%	91%
<b>Criminal RALJ</b>								
Age (days)								
50% Cases Resolved by Day	247	269	292	273	349	269	333	250
90% Cases Resolved by Day	636	510	449	497	586	636	629	562
<b>Civil RALJ</b>								
Age (days)								
50% Cases Resolved by Day	165	172	165	151	163	161	203	165
90% Cases Resolved by Day	280	225	227	326	350	255	584	241

\* Reflecting all documents received by 01/15/2018.

\*\* No standard yet.

Table 4. Active Pending Caseload Statistics  
King County Superior Court

Reporting Category	Q1/16	Q2/16	Q3/16	Q4/16	Q1/17	Q2/17	Q3/17	Q4/17*
<b>Total (incl. RALJ)</b>								
Previous Pending (+)	17886	18216	18216	18678	19119	19087	19674	19654
New Filing (+)	12992	13373	12966	12097	13209	13798	13082	12992
Resolved (-)	13113	13387	13274	12665	13067	13376	13411	13521
<b>End Pending</b>	<b>18216</b>	<b>18663</b>	<b>18678</b>	<b>19119</b>	<b>19087</b>	<b>19674</b>	<b>19654</b>	<b>19305</b>
<b>Resolution Rate**</b>	<b>1.009</b>	<b>1.001</b>	<b>1.020</b>	<b>1.047</b>	<b>0.989</b>	<b>0.969</b>	<b>1.025</b>	<b>1.035</b>
<b>Criminal (excl. RALJ)</b>								
Previous Pending (+)	2619	2725	2849	3050	3139	3116	3242	3201
New Filing (+)	1647	1594	1780	1610	1606	1704	1583	1546
Resolved (-)	1529	1444	1483	1432	1554	1536	1519	1550
<b>End Pending</b>	<b>2725</b>	<b>2849</b>	<b>3050</b>	<b>3193</b>	<b>3116</b>	<b>3242</b>	<b>3201</b>	<b>3172</b>
<b>Resolution Rate**</b>	<b>0.928</b>	<b>0.906</b>	<b>0.833</b>	<b>0.889</b>	<b>0.968</b>	<b>0.901</b>	<b>0.960</b>	<b>1.003</b>
<b>General Civil</b>								
Previous Pending (+)	6691	6686	6803	7044	7752	7336	7338	7424
New Filing (+)	5110	5602	5531	4931	5199	5491	5477	5323
Resolved (-)	5435	5872	5628	5301	5516	5608	5673	5745
<b>End Pending</b>	<b>6686</b>	<b>6803</b>	<b>7044</b>	<b>7752</b>	<b>7336</b>	<b>7338</b>	<b>7424</b>	<b>7167</b>
<b>Resolution Rate**</b>	<b>1.064</b>	<b>1.048</b>	<b>1.018</b>	<b>1.075</b>	<b>1.061</b>	<b>1.021</b>	<b>1.036</b>	<b>1.079</b>
<b>Asbestos Cases (civil) <sup>(1)</sup></b>								
Previous Pending (+)	56	55	50	58	46	42	39	36
New Filing (+)	8	9	18	6	5	2	6	7
Resolved (-)	9	14	8	16	9	7	8	8
<b>End Pending</b>	<b>55</b>	<b>50</b>	<b>58</b>	<b>46</b>	<b>42</b>	<b>39</b>	<b>36</b>	<b>36</b>
<b>Resolution Rate**</b>	<b>1.125</b>	<b>1.556</b>	<b>0.444</b>	<b>2.667</b>	<b>1.800</b>	<b>3.500</b>	<b>1.333</b>	<b>1.143</b>
<b>Domestic</b>								
Previous Pending (+)	4234	4336	4416	4465	4337	4386	4497	4585
New Filing (+)	1897	1942	1947	1720	1850	2046	1965	1732
Resolved (-)	1810	1895	1881	1924	1829	1930	1902	1935
<b>End Pending</b>	<b>4336</b>	<b>4416</b>	<b>4465</b>	<b>4337</b>	<b>4386</b>	<b>4497</b>	<b>4585</b>	<b>4366</b>
<b>Resolution Rate**</b>	<b>0.954</b>	<b>0.976</b>	<b>0.966</b>	<b>1.119</b>	<b>0.989</b>	<b>0.943</b>	<b>0.968</b>	<b>1.117</b>
<b>Probate</b>								
Previous Pending (+)	580	624	703	715	684	808	814	869
New Filing (+)	1586	1600	1454	1425	1783	1645	1501	1488
Resolved (-)	1561	1549	1473	1387	1680	1670	1472	1422
<b>End Pending</b>	<b>624</b>	<b>703</b>	<b>715</b>	<b>684</b>	<b>808</b>	<b>814</b>	<b>869</b>	<b>909</b>
<b>Resolution Rate**</b>	<b>0.984</b>	<b>0.968</b>	<b>1.013</b>	<b>0.973</b>	<b>0.942</b>	<b>1.045</b>	<b>0.981</b>	<b>0.956</b>
<b>Guardianship</b>								
Previous Pending (+)	311	336	341	337	329	330	351	345
New Filing (+)	245	263	257	247	228	249	225	244
Resolved (-)	220	258	265	231	232	231	230	212
<b>End Pending</b>	<b>336</b>	<b>341</b>	<b>337</b>	<b>329</b>	<b>330</b>	<b>351</b>	<b>345</b>	<b>376</b>
<b>Resolution Rate**</b>	<b>0.898</b>	<b>0.981</b>	<b>1.031</b>	<b>0.935</b>	<b>1.018</b>	<b>0.928</b>	<b>1.022</b>	<b>0.869</b>
<b>Adoption</b>								
Previous Pending (+)	147	163	166	163	135	182	170	177
New Filing (+)	130	116	101	111	133	132	136	145
Resolved (-)	116	113	104	140	86	145	130	166
<b>End Pending</b>	<b>163</b>	<b>166</b>	<b>163</b>	<b>135</b>	<b>182</b>	<b>170</b>	<b>177</b>	<b>155</b>
<b>Resolution Rate**</b>	<b>0.892</b>	<b>0.974</b>	<b>1.030</b>	<b>1.261</b>	<b>0.647</b>	<b>1.098</b>	<b>0.956</b>	<b>1.145</b>
<b>Paternity</b>								
Previous Pending (+)	310	278	261	232	253	260	266	241
New Filing (+)	139	133	108	148	131	151	136	119
Resolved (-)	171	140	141	121	127	150	158	109
<b>End Pending</b>	<b>278</b>	<b>261</b>	<b>232</b>	<b>253</b>	<b>260</b>	<b>266</b>	<b>241</b>	<b>245</b>
<b>Resolution Rate**</b>	<b>1.230</b>	<b>1.053</b>	<b>1.306</b>	<b>0.818</b>	<b>0.969</b>	<b>0.993</b>	<b>1.162</b>	<b>0.916</b>

\* Reflecting all documents received by 01/15/2018.

\*\* A value of "Resolution Rate" less than one indicates the resolution pace is slower than the filing pace.

Table 4 (cont.) Active Pending Caseload Statistics  
King County Superior Court

Reporting Category	Q1/16	Q2/16	Q3/16	Q4/16	Q1/17	Q2/17	Q3/17	Q4/17*
<b>ITA (civil commitment)</b>								
Previous Pending (+)	90	95	118	82	60	78	148	141
New Filing (+)	1020	1056	1048	1028	1092	1225	1200	1177
Resolved (-)	1014	1034	1085	1045	1073	1157	1206	1174
<b>End Pending</b>	<b>95</b>	<b>118</b>	<b>82</b>	<b>60</b>	<b>78</b>	<b>148</b>	<b>141</b>	<b>126</b>
<b>Resolution Rate**</b>	<b>0.994</b>	<b>0.979</b>	<b>1.035</b>	<b>1.017</b>	<b>0.983</b>	<b>0.944</b>	<b>1.005</b>	<b>0.997</b>
<b>Juvenile Dependency (DEP)</b>								
Previous Pending (+)	474	506	504	289	300	345	353	321
New Filing (+)	210	188	175	162	210	202	183	205
Resolved (-)	172	187	397	140	164	195	216	172
<b>End Pending</b>	<b>506</b>	<b>504</b>	<b>289</b>	<b>300</b>	<b>345</b>	<b>353</b>	<b>321</b>	<b>357</b>
<b>Resolution Rate**</b>	<b>0.819</b>	<b>0.995</b>	<b>2.269</b>	<b>0.864</b>	<b>0.781</b>	<b>0.965</b>	<b>1.118</b>	<b>0.839</b>
<b>Juvenile Termination (TER)</b>								
Previous Pending (+)	164	148	181	128	128	148	175	171
New Filing (+)	44	82	41	52	70	83	68	83
Resolved (-)	62	48	103	49	50	56	72	51
<b>End Pending</b>	<b>148</b>	<b>181</b>	<b>128</b>	<b>128</b>	<b>148</b>	<b>175</b>	<b>171</b>	<b>196</b>
<b>Resolution Rate**</b>	<b>1.409</b>	<b>0.585</b>	<b>2.512</b>	<b>0.942</b>	<b>0.714</b>	<b>0.675</b>	<b>1.059</b>	<b>0.614</b>
<b>Juv ARY/CHINS/OTHERS</b>								
Previous Pending (+)	111	118	136	98	86	103	120	81
New Filing (+)	63	64	51	61	52	59	59	69
Resolved (-)	63	45	93	70	37	41	101	48
<b>End Pending</b>	<b>118</b>	<b>136</b>	<b>98</b>	<b>86</b>	<b>103</b>	<b>120</b>	<b>81</b>	<b>102</b>
<b>Resolution Rate**</b>	<b>1.000</b>	<b>0.703</b>	<b>1.824</b>	<b>1.148</b>	<b>0.712</b>	<b>0.695</b>	<b>1.712</b>	<b>0.696</b>
<b>Juvenile Truancy</b>								
Previous Pending (+)	1329	1397	1430	1374	1237	1389	1513	1395
New Filing (+)	532	347	93	250	499	405	174	467
Resolved (-)	524	324	151	387	351	285	343	552
<b>End Pending</b>	<b>1397</b>	<b>1430</b>	<b>1374</b>	<b>1237</b>	<b>1389</b>	<b>1513</b>	<b>1395</b>	<b>1421</b>
<b>Resolution Rate**</b>	<b>0.985</b>	<b>0.934</b>	<b>1.624</b>	<b>1.548</b>	<b>0.703</b>	<b>0.704</b>	<b>1.971</b>	<b>1.182</b>
<b>Juvenile Offender</b>								
Previous Pending (+)	581	571	538	504	441	430	488	502
New Filing (+)	307	337	328	298	313	333	329	334
Resolved (-)	364	413	398	373	310	316	339	330
<b>End Pending</b>	<b>571</b>	<b>538</b>	<b>504</b>	<b>441</b>	<b>430</b>	<b>488</b>	<b>502</b>	<b>504</b>
<b>Resolution Rate**</b>	<b>1.186</b>	<b>1.226</b>	<b>1.213</b>	<b>1.252</b>	<b>0.990</b>	<b>0.949</b>	<b>1.030</b>	<b>0.988</b>
<b>Criminal RALJ</b>								
Previous Pending (+)	156	146	131	107	107	108	129	129
New Filing (+)	40	24	14	33	24	52	26	34
Resolved (-)	48	39	40	33	30	34	32	33
<b>End Pending</b>	<b>146</b>	<b>131</b>	<b>107</b>	<b>107</b>	<b>108</b>	<b>129</b>	<b>129</b>	<b>132</b>
<b>Resolution Rate**</b>	<b>1.200</b>	<b>1.625</b>	<b>2.857</b>	<b>1.000</b>	<b>1.25</b>	<b>0.854</b>	<b>1.231</b>	<b>0.971</b>
<b>Civil RALJ</b>								
Previous Pending (+)	33	32	36	32	31	26	31	36
New Filing (+)	14	16	20	15	14	19	14	19
Resolved (-)	15	12	24	16	19	15	10	14
<b>End Pending</b>	<b>32</b>	<b>36</b>	<b>32</b>	<b>31</b>	<b>26</b>	<b>31</b>	<b>36</b>	<b>41</b>
<b>Resolution Rate**</b>	<b>1.071</b>	<b>0.750</b>	<b>1.200</b>	<b>1.067</b>	<b>1.357</b>	<b>0.789</b>	<b>0.714</b>	<b>0.737</b>

\* Reflecting all documents received by 01/15/2018.

\*\* A value of "Resolution Rate" less than one indicates the resolution pace is slower than the filing pace.

Chart 4-A. Active Pending Caseload at Quarter End  
Total Judicial Cases Only ("Matters Filed with Clerk" excluded)

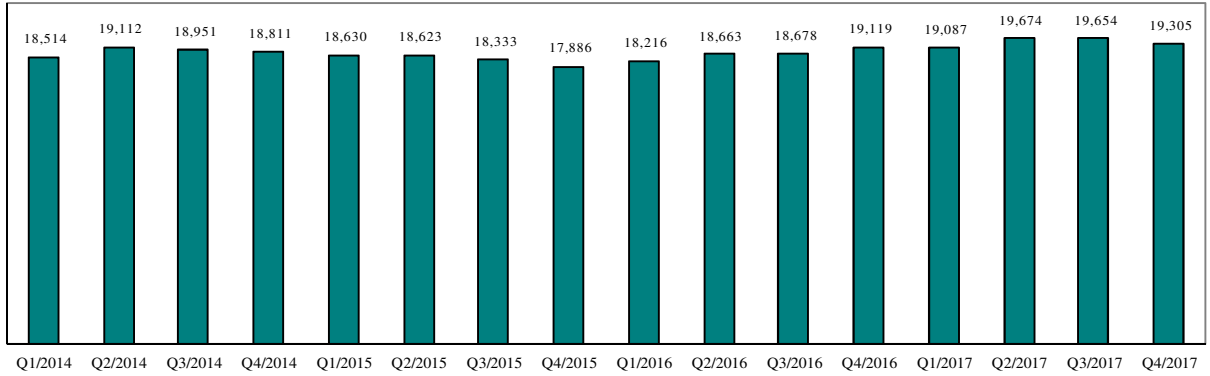


Chart 4-B. Active Pending Caseload at Quarter End: Domestic and General Civil Cases Only

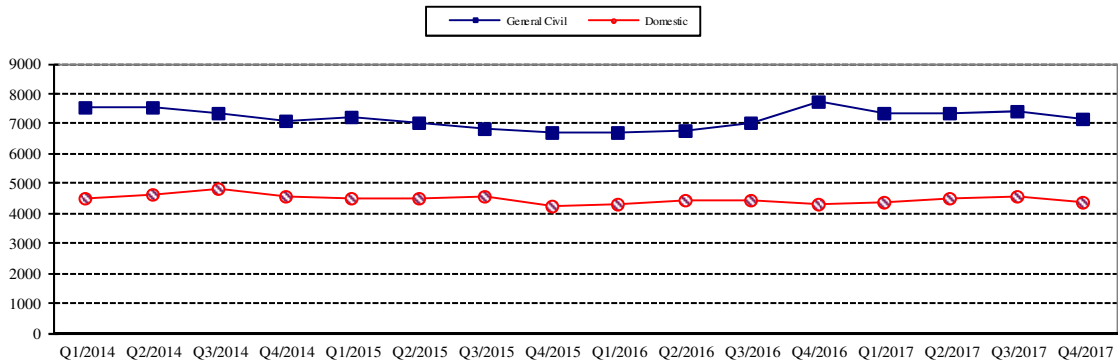
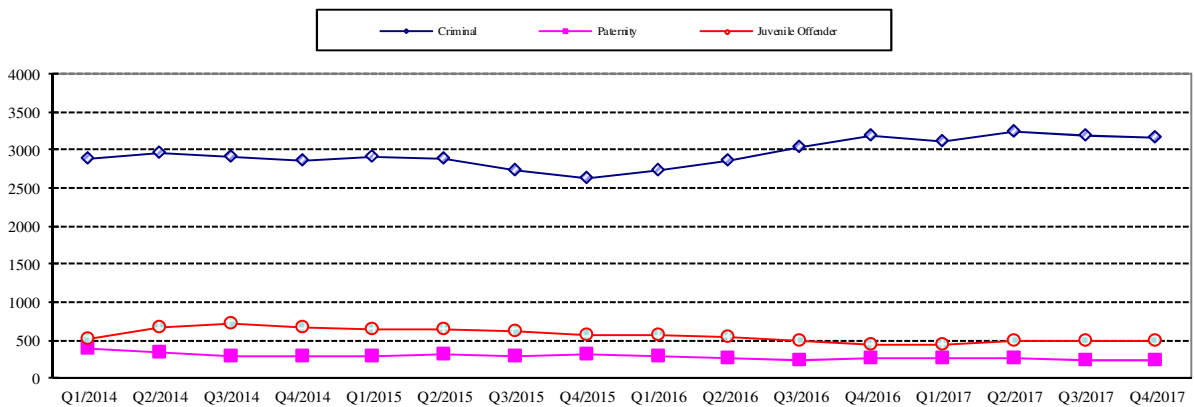


Chart 4-C. Active Pending Caseload at Quarter End:  
Criminal, Juvenile Offender, Paternity and Dependency Cases Only



\* Note: "General Civil" is specifically defined in this report. The category of "General Civil" does **not** include the following case types: domestic, probate, guardianship, adoption, paternity, mental illness, juvenile cases (dependency, at-risk youth, child-in-need of service), civil RALJ, and tax filings that don't require judicial resources ("matters filed with clerk"). Please check the Appendix for the cause codes in the "General Civil" category.

Table 5. Age of Pending Cases

King County Superior Court

Reporting Category	Age of Pending Cases and # of Cases in Each Age Interval							
	Q1/16	Q2/16	Q3/16	Q4/16	Q1/17	Q2/17	Q3/17	Q4/17*
<b>Criminal (excl. RALJ): # of Cases</b>	<b>2825</b>	<b>2849</b>	<b>3050</b>	<b>3193</b>	<b>3116</b>	<b>3242</b>	<b>3201</b>	<b>3172</b>
<b>Age (days)</b>								
Median (50 percentile)	95	99	101	111	115	106	117	119
95 percentile	395	541	542	564	562	529	566	542
<b># of Cases in Age Interval</b>								
0 - 60 days (0 - 2 months)	1020	997	1046	964	993	1068	888	845
61 - 120 days (3 - 4 months)	547	671	629	709	602	699	743	747
121 - 180 days (5 - 6 months)	348	390	442	511	473	417	498	476
181 - 270 days (7 - 9 months)	306	292	389	387	436	408	407	465
> 270 days (> 9 months)	504	494	544	622	612	650	665	639
<b>General Civil: # of Cases</b>	<b>6686</b>	<b>6803</b>	<b>7044</b>	<b>7752</b>	<b>7336</b>	<b>7338</b>	<b>7424</b>	<b>7167</b>
<b>Age (days)</b>								
Median (50 percentile)	134	126	131	149	149	129	132	132
95 percentile	395	491	501	514	520	506	527	510
<b># of Cases in Age Interval</b>								
0 - 120 days (0 - 4 months)	3127	3302	3306	3270	3145	3515	3465	3315
121 - 240 days (5 - 8 months)	1643	1704	1885	2095	1923	1692	1922	1782
241 - 360 days (9 - 12 months)	1063	997	1031	1374	1283	1175	1059	1147
361 - 540 days (13 - 18 months)	567	556	531	669	664	658	638	628
541 - 720 days (19 - 24 months)	146	129	180	190	173	163	203	167
> 720 days (> 24 months)	140	115	111	154	149	135	137	128
<b>Asbestos Cases (civil) <sup>(1)</sup> : # of Cases</b>	<b>55</b>	<b>50</b>	<b>58</b>	<b>46</b>	<b>42</b>	<b>39</b>	<b>36</b>	<b>36</b>
<b>Age (days)</b>								
Median (50 percentile)	304	353	339	235	249	330	390	436
95 percentile	690	847	939	1013	652	652	549	641
<b># of Cases in Age Interval</b>								
0 - 120 days (0 - 4 months)	9	10	17	8	7	2	6	7
121 - 240 days (5 - 8 months)	5	5	9	17	12	7	4	5
241 - 360 days (9 - 12 months)	16	15	3	8	13	16	3	5
361 - 540 days (13 - 18 months)	11	9	17	4	5	12	21	13
541 - 720 days (19 - 24 months)	9	4	4	6	4	2	1	5
> 720 days (> 24 months)	5	7	8	3	1	0	1	1
<b>Domestic: # of Cases</b>	<b>4336</b>	<b>4416</b>	<b>4465</b>	<b>4337</b>	<b>4386</b>	<b>4497</b>	<b>4585</b>	<b>4366</b>
<b>Age (days)</b>								
Median (50 percentile)	120	114	116	129	123	113	118	136
95 percentile	359	601	559	691	773	713	713	715
<b># of Cases in Age Interval</b>								
0 - 120 days (0 - 4 months)	2187	2307	2272	2041	2149	2342	2296	2022
121 - 240 days (5 - 8 months)	1133	1088	1185	1155	1132	1023	1200	1172
241 - 360 days (9 - 12 months)	589	571	551	641	584	561	510	624
361 - 540 days (13 - 18 months)	177	202	226	227	212	262	264	242
> 540 days (> 18 months)	250	248	231	273	309	309	315	306
<b>Probate: # of Cases</b>	<b>624</b>	<b>703</b>	<b>715</b>	<b>684</b>	<b>808</b>	<b>814</b>	<b>869</b>	<b>909</b>
<b>Age (days)</b>								
Median (50 percentile)	332	338	393	377	343	387	416	378
95 percentile	1025	1192	1277	1362	1418	1507	1591	1608
<b># of Cases in Age Interval</b>								
0 - 120 days (0 - 4 months)	161	181	160	150	204	172	167	202
121 - 240 days (5 - 8 months)	86	104	118	109	108	132	131	118
241 - 360 days (9 - 12 months)	81	82	72	81	109	81	101	113
361 - 540 days (13 - 18 months)	85	107	86	68	89	106	108	106
> 540 days (> 18 months)	211	229	279	276	298	323	362	370

Reflecting all documents received by 01/15/2018.

Table 5 (cont.). Age of Pending Cases

King County Superior Court

Reporting Category	Age of Pending Cases and # of Cases in Each Age Interval							
	Q1/16	Q2/16	Q3/16	Q4/16	Q1/17	Q2/17	Q3/17	Q4/17*
<b>Guardianship: # of Cases</b>	<b>336</b>	<b>341</b>	<b>337</b>	<b>329</b>	<b>330</b>	<b>351</b>	<b>345</b>	<b>376</b>
<b>Age (days)</b>								
Median (50 percentile)	67	78	81	83	86	86	102	89
95 percentile	364	456	506	510	498	487	550	570
<b># of Cases in Age Interval</b>								
0 - 120 days (0 - 4 months)	222	217	214	189	189	211	189	218
121 - 240 days (5 - 8 months)	48	60	54	74	65	62	73	51
241 - 360 days (9 - 12 months)	32	27	35	28	39	37	28	41
361 - 540 days (13 - 18 months)	24	28	19	23	26	28	37	42
> 540 days (> 18 months)	10	9	15	15	11	13	18	24
<b>Adoption: # of Cases</b>	<b>163</b>	<b>166</b>	<b>163</b>	<b>135</b>	<b>182</b>	<b>170</b>	<b>177</b>	<b>155</b>
<b>Age (days)</b>								
Median (50 percentile)	101	112	106	116	88	110	88	126
95 percentile	515	735	492	600	471	562	513	557
<b># of Cases in Age Interval</b>								
0 - 120 days (0 - 4 months)	93	85	91	68	110	88	104	74
121 - 240 days (5 - 8 months)	21	37	34	31	31	36	31	37
241 - 360 days (9 - 12 months)	17	15	22	14	20	18	20	19
361 - 540 days (13 - 18 months)	17	13	11	14	16	18	14	17
> 540 days (> 18 months)	15	16	5	8	5	10	8	8
<b>Paternity: # of Cases</b>	<b>278</b>	<b>261</b>	<b>232</b>	<b>253</b>	<b>260</b>	<b>266</b>	<b>241</b>	<b>245</b>
<b>Age (days)</b>								
Median (50 percentile)	102	105	117	89	106	91	83	108
95 percentile	256	345	403	324	388	388	362	339
<b># of Cases in Age Interval</b>								
0 - 120 days (0 - 4 months)	157	143	122	149	143	166	152	125
121 - 240 days (5 - 8 months)	86	77	71	70	75	56	49	91
241 - 360 days (9 - 12 months)	27	31	22	23	26	27	27	19
361 - 540 days (13 - 18 months)	7	8	14	9	12	15	10	8
> 540 days (> 18 months)	1	2	3	2	4	2	3	2
<b>ITA (civil commitment): # of Cases</b>	<b>95</b>	<b>118</b>	<b>82</b>	<b>60</b>	<b>78</b>	<b>148</b>	<b>141</b>	<b>126</b>
<b>Age (days)</b>								
Median (50 percentile)	9	25	5	12	5	8	16	14
95 percentile	182	350	442	545	547	103	131	194
<b># of Cases in Age Interval</b>								
0 - 120 days (0 - 4 months)	85	100	70	47	74	141	129	110
121 - 240 days (5 - 8 months)	3	8	0	6	0	3	8	14
> 240 days (> 8 months)	7	10	12	7	4	4	4	2
<b>Juv Dependency (DEP): # of Cases</b>	<b>506</b>	<b>504</b>	<b>289</b>	<b>300</b>	<b>345</b>	<b>353</b>	<b>321</b>	<b>357</b>
<b>Age (days)</b>								
Median (50 percentile)	137	170	82	89	73	94	81	94
95 percentile	455	690	382	376	366	400	251	313
<b># of Cases in Age Interval</b>								
0 - 60 days (0 - 2 months)	131	114	119	125	142	125	133	124
61 - 120 days (3 - 4 months)	105	72	71	71	80	95	76	94
121 - 180 days (5 - 6 months)	82	78	42	51	39	59	46	57
181 - 270 days (7 - 9 months)	71	79	23	28	48	26	53	44
> 270 days (> 9 months)	117	161	34	25	36	48	13	38
<b>Juv Termination (TER): # of Cases</b>	<b>148</b>	<b>181</b>	<b>128</b>	<b>128</b>	<b>148</b>	<b>175</b>	<b>171</b>	<b>196</b>
<b>Age (days)</b>								
Median (50 percentile)	214	156	152	177	106	103	128	136
95 percentile	589	680	645	527	617	603	604	577
<b># of Cases in Age Interval</b>								
0 - 60 days (0 - 2 months)	21	48	23	20	55	57	48	53
61 - 120 days (3 - 4 months)	19	33	29	34	21	43	32	41
121 - 180 days (5 - 6 months)	17	17	25	14	17	16	27	27
181 - 270 days (7 - 9 months)	35	21	14	30	10	15	28	29
> 270 days (> 9 months)	56	62	37	30	45	44	36	46

\* Reflecting all documents received by 01/15/2018.

Table 5 (cont.). Age of Pending Cases

King County Superior Court

Reporting Category	Age of Pending Cases and # of Cases in Each Age Interval							
	Q1/16	Q2/16	Q3/16	Q4/16	Q1/17	Q2/17	Q3/17	Q4/17*
<b>Juv. ARY/CHINS/OTHER: # of Cases</b>	<b>118</b>	<b>136</b>	<b>98</b>	<b>86</b>	<b>103</b>	<b>120</b>	<b>81</b>	<b>102</b>
<b>Age (days)</b>								
Median (50 percentile)	218	225	169	149	158	169	99	98
95 percentile	2850	3630	3813	3905	3938	4012	405	497
<b># of Cases in Age Interval</b>								
0 - 60 days (0 - 2 months)	26	37	25	23	30	30	32	30
61 - 120 days (3 - 4 months)	14	16	14	13	18	13	13	30
121 - 180 days (5 - 6 months)	14	10	16	14	10	24	9	14
181 - 270 days (7 - 9 months)	14	13	6	6	12	8	18	12
> 270 days (> 9 months)	50	60	37	30	33	45	9	16
<b>Juvenile Truancy: # of Cases</b>	<b>1397</b>	<b>1430</b>	<b>1374</b>	<b>1237</b>	<b>1389</b>	<b>1513</b>	<b>1395</b>	<b>1421</b>
<b>Age (days)</b>								
Median (50 percentile)	143	158	236	290	213	157	206	236
95 percentile	470	899	1017	1334	1199	1139	961	662
<b># of Cases in Age Interval</b>								
0 - 60 days (0 - 2 months)	380	177	74	173	369	276	167	355
61 - 120 days (3 - 4 months)	216	335	47	78	195	315	69	97
121 - 180 days (5 - 6 months)	242	281	296	85	125	249	316	116
181 - 270 days (7 - 9 months)	11	261	430	228	60	173	400	299
> 270 days (> 9 months)	548	376	527	673	640	500	443	554
<b>Juvenile Offender: # of Cases</b>	<b>571</b>	<b>538</b>	<b>504</b>	<b>441</b>	<b>430</b>	<b>488</b>	<b>502</b>	<b>504</b>
<b>Age (days)</b>								
Median (50 percentile)	118	98	92	98	91	85	88	96
95 percentile	435	596	689	628	646	745	806	821
<b># of Cases in Age Interval</b>								
0 - 60 days (0 - 2 months)	177	201	176	142	166	189	179	162
61 - 120 days (3 - 4 months)	113	99	109	106	84	109	131	133
121 - 180 days (5 - 6 months)	71	63	65	66	56	51	61	70
181 - 270 days (7 - 9 months)	75	44	44	45	43	38	38	57
> 270 days (> 9 months)	135	131	110	82	81	101	93	82
<b>Criminal RALJ: # of Cases</b>	<b>146</b>	<b>131</b>	<b>107</b>	<b>107</b>	<b>108</b>	<b>129</b>	<b>129</b>	<b>132</b>
<b>Age (days)</b>								
Median (50 percentile)	169	198	227	208	183	115	163	196
95 percentile	364	506	656	639	694	718	810	894
<b># of Cases in Age Interval</b>								
0 - 60 days (0 - 2 months)	27	16	8	17	23	36	19	21
61 - 120 days (3 - 4 months)	23	21	17	16	6	31	24	21
121 - 180 days (5 - 6 months)	24	21	10	11	25	7	30	16
181 - 270 days (7 - 9 months)	37	27	27	20	12	17	19	38
> 270 days (> 9 months)	35	46	45	43	42	38	37	36
<b>Civil RALJ: # of Cases</b>	<b>32</b>	<b>36</b>	<b>32</b>	<b>31</b>	<b>26</b>	<b>31</b>	<b>36</b>	<b>41</b>
<b>Age (days)</b>								
Median (50 percentile)	106	108	84	96	100	67	106	105
95 percentile	339	476	522	262	228	270	349	293
<b># of Cases in Age Interval</b>								
0 - 60 days (0 - 2 months)	9	9	11	9	8	15	11	11
61 - 120 days (3 - 4 months)	9	14	12	11	11	5	11	12
121 - 180 days (5 - 6 months)	7	6	5	6	4	6	9	10
181 - 270 days (7 - 9 months)	3	3	1	4	3	4	2	5
> 270 days (> 9 months)	4	4	3	1	0	1	3	3

\* Reflecting all documents received by 01/15/2018.

Table 6. Seattle vs. Regional Justice Center (KNT): Filing, Resolution, Pending Caseload (%)

King County Superior Court

	Q4/16		Q1/17		Q2/17		Q3/17		Q4/17	
	SEA	KNT	SEA	KNT	SEA	KNT	SEA	KNT	SEA	KNT
<b>Filings Total</b> <i>(excl. filings with clerk)</i>	<b>63%</b>	<b>37%</b>	<b>64%</b>	<b>36%</b>	<b>64%</b>	<b>36%</b>	<b>64%</b>	<b>36%</b>	<b>63%</b>	<b>37%</b>
Criminal (excl. RALJ)	54%	46%	54%	46%	56%	44%	55%	45%	55%	45%
General Civil (excl. RALJ)	55%	45%	57%	43%	57%	43%	54%	46%	56%	44%
Domestic	60%	40%	60%	40%	58%	42%	61%	39%	59%	41%
Probate	75%	25%	75%	25%	77%	23%	75%	25%	76%	24%
Guardianship	61%	39%	58%	42%	64%	36%	66%	34%	63%	37%
Adoption	76%	24%	72%	28%	76%	24%	74%	26%	72%	28%
Paternity	41%	59%	52%	48%	46%	54%	47%	53%	31%	69%
ITA (civil commitment)	100%	---	100%	---	100%	---	100%	---	100%	---
Juv. Dependency (DEP)	64%	36%	72%	28%	66%	34%	62%	38%	61%	39%
Juv. Termination (TER)	52%	48%	49%	51%	70%	30%	65%	35%	59%	41%
Juvenile ARY/CHINS/Other	49%	51%	35%	65%	56%	44%	49%	51%	48%	52%
Juvenile Truancy	38%	62%	45%	55%	36%	64%	97%	3%	44%	56%
Juvenile Offender	100%	---	100%	---	100%	---	100%	---	100%	---
Criminal RALJ	100%	---	96%	4%	98%	2%	69%	31%	94%	6%
Civil RALJ	93%	7%	86%	14%	79%	21%	36%	64%	90%	10%
<b>Resolution Total</b> <i>(excl. filings with clerk)</i>	<b>64%</b>	<b>36%</b>	<b>64%</b>	<b>36%</b>	<b>65%</b>	<b>35%</b>	<b>64%</b>	<b>36%</b>	<b>64%</b>	<b>36%</b>
Criminal (excl. RALJ)	57%	43%	58%	42%	55%	45%	58%	42%	55%	45%
General Civil (excl. RALJ)	56%	44%	57%	43%	58%	42%	56%	44%	55%	45%
Domestic	62%	38%	60%	40%	60%	40%	61%	39%	60%	40%
Probate	74%	26%	75%	25%	77%	23%	74%	26%	76%	24%
Guardianship	64%	36%	63%	37%	65%	35%	52%	48%	64%	36%
Adoption	82%	18%	70%	30%	75%	25%	70%	30%	75%	25%
Paternity	52%	48%	45%	55%	49%	51%	49%	51%	44%	56%
ITA (civil commitment)	100%	---	100%	---	100%	---	100%	---	100%	---
Juv. Dependency (DEP)	70%	30%	71%	29%	68%	32%	64%	36%	63%	37%
Juv. Termination (TER)	78%	22%	54%	46%	64%	36%	68%	32%	59%	41%
Juvenile ARY/CHINS/Other	56%	44%	46%	54%	44%	56%	64%	36%	52%	48%
Juvenile Truancy	53%	47%	39%	61%	42%	58%	47%	53%	61%	39%
Juvenile Offender	100%	---	100%	---	100%	---	100%	---	100%	---
Criminal RALJ	97%	3%	93%	7%	94%	6%	94%	6%	94%	6%
Civil RALJ	94%	6%	84%	16%	93%	7%	80%	20%	71%	29%
<b>Pending Total</b> <i>(excl. filings with clerk)</i>	<b>64%</b>	<b>36%</b>	<b>63%</b>	<b>37%</b>	<b>62%</b>	<b>38%</b>	<b>62%</b>	<b>38%</b>	<b>62%</b>	<b>38%</b>
Criminal (excl. RALJ)	58%	42%	56%	46%	57%	43%	55%	45%	56%	44%
General Civil (excl. RALJ)	67%	33%	68%	32%	66%	34%	65%	35%	66%	34%
Domestic	60%	40%	59%	41%	58%	42%	58%	42%	57%	43%
Probate	79%	21%	79%	21%	78%	22%	79%	21%	79%	21%
Guardianship	60%	40%	57%	43%	57%	43%	66%	34%	65%	35%
Adoption	66%	34%	69%	31%	70%	30%	73%	27%	70%	30%
Paternity	49%	51%	51%	49%	50%	50%	49%	51%	42%	58%
ITA (civil commitment)	100%	---	100%	---	100%	---	100%	---	100%	---
Juv. Dependency (DEP)	64%	36%	65%	35%	64%	36%	63%	37%	60%	40%
Juv. Termination (TER)	65%	35%	61%	39%	64%	36%	63%	37%	62%	38%
Juvenile ARY/CHINS/Other	64%	36%	53%	47%	58%	42%	46%	54%	45%	55%
Juvenile Truancy	47%	53%	49%	51%	47%	53%	53%	47%	47%	53%
Juvenile Offender	100%	---	100%	---	100%	---	100%	---	100%	---
Criminal RALJ	91%	9%	92%	8%	94%	6%	89%	11%	90%	10%
Civil RALJ	87%	13%	89%	11%	81%	19%	61%	39%	71%	29%

Reflecting all documents received by 01/15/2018



Table 7. Quarterly Utilization of Pro Tem Judges/Commissioners <sup>(1)</sup>

Category	Q3/15	Q4/15	Q1/16	Q2/16	Q3/16	Q4/16	Q1/17	Q2/17	Q3/17	Q4/17*
<b>Grand Total</b>	<b>1054</b>	<b>1733</b>	<b>769</b>	<b>1157</b>	<b>859</b>	<b>1732</b>	<b>924</b>	<b>1567</b>	<b>1657</b>	<b>2131</b>
<b>Judge FTE Equivalent <sup>(3)</sup></b>	<b>2.3</b>	<b>3.9</b>	<b>1.7</b>	<b>2.6</b>	<b>1.9</b>	<b>3.8</b>	<b>2.1</b>	<b>3.5</b>	<b>3.7</b>	<b>4.7</b>
<b>By Work Type</b>										
Pro Tem Judge	130	236	99	191	134	436	166	322	456	307
Pro Tem Commissioner	925	1497	679	966	725	1256	759	1245	1201	1824
Unspecified	0	0	0	0	0	41	0	0	0	0
<b>By Location</b>										
KCCCH	346	882	420	394	346	840	344	604	864	953
MRJC	326	501	193	239	214	389	262	463	234	403
Juvenile	260	234	123	405	201	367	208	411	429	553
ITA	122	117	33	119	98	137	111	89	131	222
Other	0	0	0	0	0	0	7	0	0	0
<b>By Calendar Type</b>										
Criminal	112	185	70	50	55	130	36	68	120	74
Civil	0	0	3	0	0	0	0	0	0	0
Ex Parte	100	264	64	134	95	111	56	305	315	433
Family Law/Domestic	461	929	470	421	397	743	415	615	429	693
Dependency	240	172	81	251	120	250	150	236	320	367
Juvenile Offender	18	51	27	125	69	108	31	145	104	123
BECCA	3	11	16	29	13	10	26	30	6	63
ITA	122	117	33	119	98	137	111	89	131	222
Juvenile Drug Court	0	0	0	0	0	0	0	0	0	0
Family Treatment Court	0	0	0	0	0	0	0	0	0	0
Plea Calendar	0	0	0	4	11	157	79	67	167	122
Status/Non-Compliance	0	0	7	16	2	5	0	0	2	9
Other or Unspecified	0	0	0	9	0	82	20	12	65	26
<b>By Reason</b>										
Vacation Backfill	673	818	397	582	499	783	365	628	883	1065
Medical Backfill	168	294	211	213	223	302	159	184	171	281
Duty Time	132	288	134	189	89	166	208	437	204	200
Conference Coverage	0	59	0	134	24	0	0	0	21	59
Congestion	69	126	23	29	14	235	99	318	380	527
Vacancy Coverage	0	5	4	0	0	185	84	0	0	0
Other	12	145	0	11	10	61	10	0	0	0

(1) This table is based on the time sheet for compensation

(2) Judge FTE Equivalent = # of hours / [7.5 hours/day \* 20 days/month \* 3 months] = # of hours/450.

Data for the most current quarter are incomplete at reporting time and will be updated in next quarterly report.

The statistics on Pro Tem judge/commissioner use provide information on the external help the court has obtained in order to handle the workload. The data are collected on the time sheet for compensation (therefore it does not include unpaid volunteering or visiting judges/commissioners). The database on Pro Tem judges/commissioners is managed by the Administrative Services Department (ASD) of King County Superior Court. The Pro Tem total hours presented in this section are provided quarterly by ASD.

Table 8. Family Law Activity

	2ND QTR, 2016		3RD QTR, 2016		4TH QTR, 2016		1ST QTR, 2017		2ND QTR, 2017		3RD QTR, 2017		4TH QTR, 2017	
	HRGS	ORDS	HRGS	ORDS	HRGS	ORDS	HRGS	ORDS	HRGS	ORDS	HRGS	ORDS	HRGS	ORDS
<b>SEATTLE</b>														
FAM.LAW	483	1643	465	1546	430	1506	447	1553	435	1483	440	1521	461	1539
DAILY AVG.	8	27	8	25	7	25	7	25	7	24	7	25	8	25
PATERNITY	67	752	76	840	94	752	71	792	48	665	52	720	47	557
DAILY AVG.	1	12	1	14	2	12	1	13	1	11	1	12	1	9
DOM. VIOL.	236	666	225	707	239	653	229	576	224	627	264	736	229	618
DAILY AVG.	4	11	4	12	4	11	4	9	4	10	4	12	4	10
	2ND QTR, 2016		3RD QTR, 2016		4TH QTR, 2016		1ST QTR, 2017		2ND QTR, 2017		3RD QTR, 2017		4TH QTR, 2017	
	HRGS	HRGS	HRGS	ORDS	HRGS	ORDS	HRGS	ORDS	HRGS	ORDS	HRGS	ORDS	HRGS	ORDS
<b>KENT</b>														
FAM.LAW	368	1304	339	1268	361	1133	299	1209	334	1213	365	1249	339	1067
DAILY AVG.	6	21	6	21	6	19	5	20	5	20	6	20	6	17
PATERNITY	46	697	59	622	63	515	61	699	57	685	58	591	50	480
DAILY AVG.	1	11	1	10	1	8	1	11	1	11	1	10	1	8
DOM. VIOL.	323	823	334	826	302	807	275	699	328	818	290	816	330	813
DAILY AVG.	5	13	5	14	5	13	5	11	5	13	5	13	5	13
	2ND QTR, 2016		3RD QTR, 2016		4TH QTR, 2016		1ST QTR, 2017		2ND QTR, 2017		3RD QTR, 2017		4TH QTR, 2017	
	HRGS	ORDS	HRGS	ORDS	HRGS	ORDS	HRGS	ORDS	HRGS	ORDS	HRGS	ORDS	HRGS	ORDS
<b>SEA/KNT</b>														
<b>TOTAL</b>	<b>1523</b>	<b>5885</b>	<b>1498</b>	<b>5809</b>	<b>1489</b>	<b>5366</b>	<b>1382</b>	<b>5528</b>	<b>1426</b>	<b>5491</b>	<b>1469</b>	<b>5633</b>	<b>1456</b>	<b>5074</b>
<b>DAILY AVG.</b>	<b>25</b>	<b>96</b>	<b>25</b>	<b>95</b>	<b>24</b>	<b>88</b>	<b>23</b>	<b>91</b>	<b>23</b>	<b>90</b>	<b>24</b>	<b>92</b>	<b>24</b>	<b>83</b>

The statistics on family law and Ex Parte activity are obtained directly from SCOMIS using the appropriate docket codes.

Table 9. Ex Parte Activity

	4TH QTR, 2016		1ST QTR, 2017		2ND QTR, 2017		3RD QTR, 2017		4TH QTR, 2017	
	HRGS	ORDS	HRGS	ORDS	HRGS	ORDS	HRGS	ORDS	HRGS	ORDS
<b>SEATTLE</b>										
ADOP/PAT	87	294	56	231	99	303	61	266	87	367
DOM. VIOL.	7	344	8	419	4	356	12	351	5	311
OTH. CIVIL	259	534	251	640	316	604	274	604	292	603
DOMESTIC	400	1785	362	1722	399	1784	313	1643	375	1861
PROB/GDN	1143	2367	853	2682	711	2301	691	1856	654	1758
<b>SUBTOTAL</b>	<b>1896</b>	<b>5324</b>	<b>1530</b>	<b>5694</b>	<b>1529</b>	<b>5348</b>	<b>1351</b>	<b>4720</b>	<b>1413</b>	<b>4900</b>
<b>DAILY AVG.</b>	<b>31</b>	<b>87</b>	<b>25</b>	<b>93</b>	<b>25</b>	<b>88</b>	<b>22</b>	<b>77</b>	<b>23</b>	<b>80</b>
<b>SEATTLE MAIL-IN</b>										
ADOP/PAT	----	0	----	0	----	0	----	0	----	1
DOM. VIOL.	----	2	----	0	----	0	----	0	----	0
OTH. CIVIL	----	169	----	112	----	124	----	84	----	96
DOMESTIC	----	24	----	23	----	17	----	15	----	9
PROB/GDN	----	76	----	87	----	72	----	59	----	68
<b>SUBTOTAL</b>	<b>----</b>	<b>271</b>	<b>----</b>	<b>222</b>	<b>----</b>	<b>213</b>	<b>----</b>	<b>158</b>	<b>----</b>	<b>174</b>
<b>DAILY AVG.</b>	<b>----</b>	<b>4</b>	<b>----</b>	<b>4</b>	<b>----</b>	<b>3</b>	<b>----</b>	<b>3</b>	<b>----</b>	<b>3</b>
<b>KENT</b>										
ADOP/PAT	29	76	25	97	45	147	42	120	38	121
DOM. VIOL.	3	483	4	557	6	528	3	561	2	502
OTH. CIVIL	293	541	319	573	310	499	290	610	145	587
DOMESTIC	377	1296	384	1277	388	1372	397	1287	343	1274
PROB/GDN	423	728	455	807	453	690	409	601	238	582
<b>SUBTOTAL</b>	<b>1125</b>	<b>3124</b>	<b>1187</b>	<b>3311</b>	<b>1202</b>	<b>3236</b>	<b>1141</b>	<b>3179</b>	<b>766</b>	<b>3066</b>
<b>DAILY AVG.</b>	<b>18</b>	<b>51</b>	<b>19</b>	<b>54</b>	<b>20</b>	<b>53</b>	<b>19</b>	<b>52</b>	<b>13</b>	<b>50</b>
<b>KENT MAIL-IN</b>										
ADOP/PAT	----	1	----	1	----	1	----	0	----	0
DOM. VIOL.	----	0	----	0	----	0	----	0	----	0
OTH. CIVIL	----	30	----	17	----	24	----	2	----	14
DOMESTIC	----	10	----	8	----	3	----	2	----	4
PROB/GDN	----	28	----	34	----	27	----	23	----	22
<b>SUBTOTAL</b>	<b>----</b>	<b>69</b>	<b>----</b>	<b>60</b>	<b>----</b>	<b>55</b>	<b>----</b>	<b>27</b>	<b>----</b>	<b>40</b>
<b>DAILY AVG.</b>	<b>----</b>	<b>1</b>	<b>----</b>	<b>1</b>	<b>----</b>	<b>1</b>	<b>----</b>	<b>0</b>	<b>----</b>	<b>1</b>
<b>ALL SEA AND KENT</b>										
<b>TOTAL</b>	<b>3021</b>	<b>8789</b>	<b>2717</b>	<b>9288</b>	<b>2731</b>	<b>8853</b>	<b>2492</b>	<b>8085</b>	<b>2179</b>	<b>8181</b>
<b>AVERAGE</b>	<b>50</b>	<b>144</b>	<b>45</b>	<b>152</b>	<b>45</b>	<b>145</b>	<b>41</b>	<b>133</b>	<b>36</b>	<b>134</b>

Note: Statistical report on Ex Parte via Clerk commenced in January 2009 and discontinued in 2016 when technology in E-filing allows orders being electronically signed by judicial officers without a department designation.

# Appendix Glossary and Definition

## General Definition

### **Active Status**

A case is active if it is not on suspense status (see Suspense Status).

### **Case**

A case is defined as a filing with an assigned case number (or a case number plus a defendant connection code in pre-1990 criminal filings).

### **Completion**

A case is completed when dispositive document is filed with the court following resolution.

### **Jury Trial**

A hearing is reported as a jury trial if the jury is impaneled.

### **New Case**

A new case is an original filing with new case number assigned.

### **Non-Jury Trial**

A hearing is reported as a non-jury trial if an opening statement is made, waived, or reserved. A juvenile fact finding hearings is reported as a non-jury trial.

### **Pending Case**

A case is defined as pending if it is unresolved and active (not in suspense).

### **Reactivated Case**

A case returns to active status from suspense status during the reporting period.

### **Re-opened Cases**

A case is re-opened if it has been previously completed but returns to the court for supplement or change of the original case resolution. A re-opened case does not have a new case number. Only resolved cases can be "re-opened". (Note: measurement not available as of July 1996. SCOMIS capacity may exist after conversion to DB2 in the future).

### **Resolution**

A case is resolved if all issues in the complaint are fully adjudicated.

### **Suspended Case**

A case is placed in suspense status from active status during the reporting period.

### **Suspense Status**

A case is on suspense status if it is on warrant, appeal, stay, mediation, arbitration ("Deferred Prosecution" is not a suspense status, but is treated as a resolution).

### **Trial**

A hearing set before a judge or jury in which all the issues in the case are meant to be resolved. A trial normally includes opening statements to the court or jury stating what the evidence will show, introduction of witnesses and exhibits for direct and cross examination, final arguments to the court or jury in which counsel argue both the evidence and the law, and judgment by the court or jury stating what the facts of the case are and what law applies to the facts. In a jury case, it also includes the selection of the jury. A trial can be held

for one or more cases. A single trial may be held to adjudicate more than one case (as defined above).

### **Post-resolution Modifications**

In this report, we also report the post-resolution modifications for case type 3 (domestic) and 5 (paternity). These numbers are based on the tracks (DMOD and DTBA) opened after the original resolution date (i.e., if the track beginning date is after the resolution date).

## Section I. Filing Activity

### **Additional Filings with Clerk**

Filings with clerk without assigning a SCOMIS case number. This reporting category consists of search warrants, wire taps, extradition, oaths and orders pertaining to Pro Tem judge/commissioners/Court

Reporters/Bailiffs, and other "non-case" filings as recorded under 12050 system.

### **Annual Filings**

Total number of new case filings during the calendar year (January 1 to December 31).

### **Adoption Cases**

This reporting category includes the following "cause-of-action" codes within SCOMIS case type 5:

- Relinquishment (REL)
- Termination of Parent/Child Relationship (TER)
- Adoption (ADP)
- Miscellaneous (MSC)
- Name Change - Confidential (CHN)
- Initial Pre-Placement Report Filed with Clerk (PPR)

### **General Civil Cases**

"General Civil" cases include all civil matters other than Domestic, Probate, Guardianship, Adoption, Paternity and appeals from courts of limited jurisdiction and "Matters Filed with Clerk". "General civil" cases include small claims as identified by the "Small Claim Track". This reporting category includes the following "cause-of-action" codes within SCOMIS case type 2:

- Administrative Law Review (ALR)
- Change of Name - Non-Confidential (CHN)
- Collection (COL)
- Commercial (COM)
- Condemnation (CON)
- Domestic Violence Protection (DVP)
- Emancipation of Minor (EOM)
- Foreclosure (FOR)
- Civil Harassment (HAR)
- Injunction (INJ)
- Other Malpractice (MAL)
- Medical Malpractice (MED)
- Meretricious Relationship (MER)
- Malicious Harassment (MHA)
- Miscellaneous (MSC)
- Minor Settlement (MST) - as of 10/1/96, under Guardianship
- Petition of Civil Commitment- Sexual Predator (PCC)
- Property Fairness (PFA)
- Personal Injury (PIN)

- Property Damage (PRP)
- Quiet Title (QTI)
- Small Claims (LCA/LCI on “Small Claim Track”)
- Seizure of Property from the Commission of a Crime (SPC)
- Seizure of Property Resulting from a Crime (SPR)
- Tort Motor Vehicle (TMV)
- Tort Other (TTO)
- Unlawful Detainer (UND)
- Wrongful Death (WDE)
- Writ of Habeas Corpus (WHC)
- Miscellaneous Writ (WMW)
- Writ of Mandamus (WRM)
- Writ of Restitution (WRR)
- Writ of Review (WRV)

**Civil RALJ Cases**

Civil appeals from courts of limited jurisdiction (excluding small claims as identified by the “Small Claim Track”). Civil RALJ includes the following “cause-of-action” reporting categories:

- Lower Court Appeal - Civil and “Not a Small Claim”
- Lower Court Appeal - Infraction and “Not a Small Claim”

Note: The Civil RALJ cases are determined based on both SCOMIS “cause-of-action” code (LCA and LCI) within SCOMIS case type 2 and the “Small Claim Track”.

**Criminal Cases (excl. RALJ)**

Adult criminal cases, excluding appeals from courts of limited jurisdiction. This reporting category includes the following crime categories within SCOMIS case type 1:

- Homicide
- Sex Crime
- Robbery
- Assault
- Theft/Burglary
- Motor Vehicle Theft
- Controlled Substance
- Other Felony
- Others (Misdemeanor, Non-charge Case)

**Criminal RALJ Cases**

Criminal appeals from courts of limited jurisdiction. This reporting category includes all SCOMIS case type 1 cases that have an appeal from lower court field of “Yes”.

**Domestic Cases**

This reporting category includes the following “cause-of-action” codes within SCOMIS case type 3:

- Annulment – Invalidity (INV)
- Child Custody (CUS)
- Dissolution With Children Of The Marriage (DIC)
- Dissolution With No Children Of The Marriage (DIN)
- Dissolution of Domestic Partnership – With Children (DPC)
- Dissolution of Domestic Partnership – With No Children (DPN)
- Foreign Judgment (FJU)
- Invalidity – Domestic Partnership (INP)
- Mandatory Wage Assignment (MWA)
- Miscellaneous (MSC)
- Modification (MOD)
- Modification – Support Only (MDS)
- Out-Of-State Child Custody (OSC)
- Parenting Plan / Child Support (PPS)
- Reciprocal, Respondent In-County (RIC)
- Reciprocal, Respondent Out-of-County (ROC)
- Legal Separation (SEP)
- Legal Separation – Domestic Partnership (SPD)

**Guardianship Cases**

This reporting category includes the following “cause-of-action” codes within SCOMIS case type 4:

- Guardianship/Estate (G/E)
- Guardianship (GND)
- Limited Guardianship (LGD)
- Minor Settlement (MST)

**Juvenile ARY/CHINS Cases**

Juvenile dependency cases, excluding truancy cases and DEP cause code. This reporting category includes following “cause-of-action” codes within SCOMIS case type 7:

- Alternative Residential Placement (ARP)
- At-Risk Youth (ARY)
- Child in Need of Service (CNS)

**Juvenile Dependency Cases**

This reporting category includes following “cause-of-action” codes within SCOMIS case type 7:

- Dependency (DEP)
- Termination (TER)
- Developmental Disability (DDP)
- Guardianship Foster Children (GFC)
- Reinstatement of Parental Rights (RPR)
- Extension of Foster Care (EFC)
- Relative Visitation (RVS)

**Juvenile Offender Cases**

This reporting category includes the following crime categories in SCOMIS case type 8:

- Homicide
- Sex Crime
- Robbery
- Assault
- Theft/Burglary
- Motor Vehicle Theft
- Controlled Substance
- Other Felony
- Others (Misdemeanor, Non-charge Case)

**Juvenile Truancy Cases**

Mandatory truancy filings started on 10/01/1995. This reporting category includes the following “cause-of-action” code within SCOMIS case type 7:

- Truancy (TRU)

**Matters Filed with Clerk**

Filings with clerk (case numbers assigned), but requiring little or no judicial action. This reporting category includes the following “cause-of-action” codes within SCOMIS case type 2:

- Abstract of Judgment (ABJ)
- Foreign Judgment (FJU)
- Tax Warrant (TAX)
- Transcripts of Judgment (TRJ)

**ITA (civil commitment) Cases**

This reporting category includes all “cause-of-action” codes within SCOMIS case type 6:

- Alcoholic Treatment (ALT)
- Mental Illness - Adult (MI)
- Mental Illness - Juvenile (MIJ)
- Mental Illness - Family (MIF)

**Paternity Cases**

This reporting category includes the following “cause-of-action” codes within SCOMIS case type 5:

- Modification (MOD)
- Paternity (PAT)
- Paternity/URES/UFSA (PUR)

**Probate Cases**

This reporting category includes the following “cause-of-action” codes within SCOMIS case type 4:

- Absentee (ABS)
- Disclaimer (DSC)
- Estate (EST)
- Foreign Will (FNW)
- Miscellaneous (MSC)
- Non-Probate Notice to Creditors (NNC)
- Will Only (WLL)

### **Total Cases**

New cases with case numbers assigned, excluding “Matters Filed with Clerk” and “Additional Filings with Clerk”.

### **Year-to-Date Filings**

Total number of new filings since the beginning of calendar year (January 1) to the end of reporting period.

## **Section II. Resolution Category**

### **Adoption - Resolved by Trial**

Court Decision after Non-Jury Trial (CDAT)

### **Adoption - Uncontested**

Consolidated Case (CONS)  
Uncontested Resolution (UNDS)

### **Adoption - Settlement/Dismissal**

Closed by Court Order after a Hearing (CLCO)  
Dismissal without Trial (DSM)  
Dismissal after Non-Jury Trial Commencement (DAT)  
Settled after Non-Jury Trial Commencement (SAT)  
Settled by Parties/Agreed Judgment (STPR)

### **Adoption - Closure by Clerk**

Dismissal/Closure by Clerk (DSCK)

### **Adoption - Others**

Change of Venue/Jurisdiction (CHV)  
Other Non-specified Resolutions

### **Civil - Resolved by Jury Trial**

Jury Verdict after Trial (JVAT)

### **Civil - Resolved by Non-Jury Trial**

Court Decision after Non-Jury Trial (CDAT)

### **Civil - Summary Judgment**

Summary Judgment (SMJG)

### **Civil - Default/Uncontested**

Consolidated Case (CONS)  
Default Judgment (DFJG)  
Uncontested Resolution (UNDS)

### **Civil - Arbitration**

Settle by Arbitration (ARBA)

### **Civil - Settlement/Dismissal**

Closed by Court Order after a Hearing (CLCO)  
Dismissal after Non-Jury Trial (DAT)  
Dismissal after Jury Trial (DJT)  
Dismissal (DSM)  
Settled after Non-Jury Trial Commencement (SAT)  
Settled after Jury Trial Commencement (SJT)  
Settled by Parties/Agreed Judgment (STPR)

### **Civil - Closure by Clerk**

Dismissal/Closure by Clerk (DSCK)

### **Civil - Others**

Transferred to Federal bankruptcy Court (BANK)  
Change of Venue/Jurisdiction (CHV)  
Other Non-specified Resolutions

### **Civil RALJ - RALJ Decision**

Court Decision to Affirm Appeal/review (CDTA)  
Court Decision to Modify Appeal/Review (CDTM)  
Court Decision to Reverse Appeal/review (CDTR)

### **Civil RALJ - Dismissal**

Dismissal and Remand of Appeal/Review (DSRM)

### **Civil RALJ - Others**

Other Non-specified Resolutions

### **Comparison with Court Standard**

Percentage of cases actually falling within the Court’s standard benchmark.

### **Court Standard**

Benchmarks set by a state advisory committee and adopted by the court indicating percentage of cases to be resolved at certain age (in months, 1 month = 30 days as used in the Advisory Case Processing Time Standard as published in the Court Rule).

Court standard is based on timelines as suggested by State Advisory Committee. For a case type with no time standard, the standard for a similar case type is adopted if appropriate.

*Criminal: 90% by 4 months, 98% by 6 months, 100% by 9 months.*

*Civil: 90% by 12 months, 98% by 18 months, 100% by 24 months.*

*Domestic: 90% by 8 months, 98% by 10 months, 100% by 14 months.*

*Probate/Guardianship: 90% by 8 months, 98% by 18 months, 100% by 36 months.*

*Adoption/Paternity: 90% by 8 months, 98% by 10 months, 100% by 14 months.*

*Mental Illness/Juvenile Truancy: No standard yet.*

*Juvenile Dependency: 90% by 8 months, 98% by 10 months, 100% by 14 months.*

*Juvenile Offender: 90% by 4 months, 98% by 6 months, 100% by 9 months.*

*Criminal RALJ/Civil RALJ: 90% by 4 months, 98% by 5 months, 100% by 6 months.*

### **Criminal - Resolved by Jury Trial**

Acquittal by Jury (AQJV)  
Convicted - Jury Verdict after Trial (CVJV)

### **Criminal - Resolved by Non-Jury Trial**

Acquittal by Court (AQCT)  
Convicted - Court Decision after Non-Jury Trial (CVCT)

### **Criminal - Resolved by Guilty Plea**

Guilty Plea (GP)  
Guilty Plea after Non-Jury Trial Commencement (GPAT)  
Guilty Plea after Jury Trial Commencement (GPJT)

### **Criminal - Dismissal**

Dismissal after Non-Jury Trial Commencement (DAT)  
Dismissal after Jury Trial Commencement (DJT)  
Dismissal (DSM)

### **Criminal - Others**

Change of Venue (CHV)  
Consolidated Case (CONS)  
Continued Order of Prosecution with Completion (CTOP)\*  
Deferred Prosecution (DFPD)  
Dismissal/Closure by Clerk (DSCK)  
Governor’s warrant (GW)  
Not Guilty by Reason of Insanity (NGRI)  
Uncontested Resolution (UNDS)  
Waiver of Extradition (WE)  
Other Non-specified Resolutions

\* Note: For adult criminal cases, “CTOP” does not necessarily constitute resolution. An adult criminal case with a “CTOP” as resolution code is counted as a resolved case only if a completion code exists along with the “CTOP”. If the resolution code is CTOP and there is no completion code, then the case is treated as unresolved. The primary reason for combining “CTOP” with a completion code is to determine resolution for drug court cases (CTOP is entered in the SCOMIS resolution field as soon as a defendant enrolls in

Drug Court). This rule on “CTOP” applies to adult criminal cases only.

***Criminal RALJ - RALJ Decision***

Court Decision to Affirm Appeal/review (CDTA)  
Court Decision to Modify Appeal/Review (CDTM)  
Court Decision to Reverse Appeal/review (CDTR)

***Criminal RALJ - Dismissal***

Dismissal and Remand of Appeal/Review (DSRM)

***Criminal RALJ - Others***

Other Non-specified Resolutions

***Domestic - Resolved by Trial***

Court Decision after Non-Jury Trial (CDAT)

***Domestic - Default/Uncontested***

Consolidated Case (CONS)  
Default Judgment (DFJG)  
Uncontested Resolution (UNDS)

***Domestic - Settlement/Dismissal***

Settled by Arbitration (ARBA)  
Closed by Court Order after a Hearing (CLCO)  
Dismissal after Non-Jury Trial Commencement (DAT)  
Dismissal (DSM)  
Settled after Non-Jury Trial Commencement (SAT)  
Settled by Parties/Agreed Judgment (STPR)

***Domestic - Closure by Clerk***

Dismissal/Closure by Clerk (DSCK)

***Domestic - Others***

Change of Venue/Jurisdiction (CHV)  
Summary Judgment (SMJG)  
Other Non-specified Resolutions

***Guardianship - Guardian Appointed***

Guardian Appointed (PRGA)

***Guardianship - Dismissal***

Closed by Court Order after a Hearing (CLCO)  
Dismissal (DSM)

***Guardianship - Closure by Clerk***

Dismissal/Closure by Clerk (DSCK)

***Guardianship - Others***

Change of Venue/Jurisdiction (CHV)  
Consolidated Case (CONS)  
Uncontested Resolution (UNDS)  
Other Non-specified Resolutions

***Juvenile Dependency - Finding of Dependency***

Approved Petition (APP)

***Juvenile Dependency - Dismissal***

Dismissal (DSM)

***Juvenile Dependency - Others***

Change of Venue/Jurisdiction (CHV)  
Consolidated Case (CONS)  
Transfer of Jurisdiction (TRJU)  
Other Non-specified Resolutions

***Juvenile Offender - Resolved by Trial***

Acquittal by Court (AQCT)  
Convicted - Court Decision after Adjudicatory Hearing (CVCT)

***Juvenile Offender - Resolved by Guilty Plea***

Guilty Plea before Adjudicatory Hearing Commencement (GP)  
Guilty Plea after Adjudicatory Hearing Commencement (GPAT)

***Juvenile Offender - Dismissal***

Dismissal after Adjudicatory Hearing Commencement (DAT)

Dismissal (DSM)

***Juvenile Offender - Others***

Change of venue (CHV)  
Dismissal/Closure by Clerk (DSCK)  
Consolidated Case (CONS)

Continued Prosecution (CTOP)

Decline of Jurisdiction (DECL)

Uncontested Resolution (UNDS)

Other Non-specified Resolutions

***Juvenile Truancy - Finding of Truancy***

Approved Petition (APP)

***Juvenile Truancy - Dismissal***

Dismissal (DSM)

***Juvenile Truancy - Others***

Change of Venue (CHV)  
Consolidated Case (CONS)  
Transfer of Jurisdiction (TRJU)  
Other Non-specified Resolutions

***ITA - Court Decision to Commit***

Court Decision to Commit (CDTC)

***ITA - Closed by Court***

Closed by Court (CLCO)

***ITA - Dismissal***

Dismissal (DSM)

***ITA - Others***

Change of Venue/Jurisdiction (CHV)  
Uncontested Resolution (UNDS)  
Other Non-specified Resolutions

***Paternity - Resolved by Trial***

Court Decision after Non-Jury Trial (CDAT)

***Paternity - Summary Judgment***

Summary Judgment (SMJG)

***Paternity - Default/Uncontested***

Consolidated Case (CONS)  
Default Judgment (DFJG)  
Uncontested Resolution (UNDS)

***Paternity - Settlement/Dismissal***

Settled by Arbitration (ARBA)  
Closed by Court Order after a Hearing (CLCO)  
Dismissal after Non-Jury Trial Commencement (DAT)  
Dismissal (DSM)  
Settled after Non-Jury Trial Commencement (SAT)  
Settled by Partied/Agreed Judgment (STPR)

***Paternity - Closure by Clerk***

Dismissal/Closure by Clerk (DSCK)

***Paternity - Others***

Change of Venue (CHV)  
Other Non-specified Resolutions

***Percentile***

Percent of cases resolved at a given age. For example, if resolved cases had a 98 percentile of 12 months, it means that 98% of the cases were resolved within the age of 12 months, or conversely 2% of the cases were resolved after 12 months, not counting suspense time.

**Probate - Personal Representative Appointed**

Non-Intervention Probate (NIP)  
Personal Representative Appointed (PRGA)

**Probate - Dismissal**

Closed by Court Order after a Hearing (CLCO)  
Dismissal (DSM)

**Probate - Closure by Clerk**

Dismissal/Closure by Clerk (DSCK)

**Probate - Others**

Change of Venue (CHV)  
Consolidated Case (CONS)  
Uncontested Resolution (UNDS)  
Other Non-specified Resolutions

**Backlogged Cases**

Active pending cases with an age exceeding the court-adopted time standard for each specific case type (recommended by the State Advisory Committee, see definition for *Court Standard*).

**Section III. Pending Caseload**

**Adjustment**

Adjustment made because of vacating of resolutions, or change in suspense status between two reporting period.

**End Pending**

Total number of pending cases at the end of reporting period.

**Previous Pending**

Total number of pending cases at the beginning of reporting period.

**Resolution Rate**

Resolution rate is defined as the ratio of number of resolutions to number of new filings (i.e., number of resolutions divided by number of new filings) during the reporting period. The resolution rate measures the relative pace of resolution in relation to the pace of new filings. A resolution rate of greater than 1 indicates the number of resolutions exceeds the number of new filings.

**On-review Status**

Cases that have been resolved (post-resolution) but still need court resources for periodic review and other remaining outstanding issues.

*Probate (EST), Paternity (PAT) and Dependency (DEP): Resolved and not completed (paternity or dependency established, but outstanding issues remain).*

*Guardianship (GDN,LGD,G/E): Resolved and on tracks of G1,G2,G3,GE or GD; Minor Settlement (MST): Resolved with a future hearing date.*

**Section IV. Age of Pending Cases**

**Case Age**

The age of a case is the time (number of days) since the filing date, less any suspense time if applicable.

**Median Age**

The median age is the time that 50% of the cases are under and 50% are above the given age. For example, if pending cases have a median age of 12 months, it means that 50% of the pending cases are within the age of 12 months, and 50% of pending cases are over 12 months. The median age is more robust to cases with extreme age values than the average age.

**Suspense Time**

Time (days) that a case is on suspense status before its resolution. If a case has more than one suspense between filing and resolution, the suspense time is the total from all suspense. Time on suspense status after resolution (e.g., appeals) is not counted.