

King County Superior Court
Quarterly Statistical Report

Second Quarter 2018

Department of Judicial Administration
Prepared by: Shiquan Liao, Ph.D., Statistician

Release Date: July 20, 2018

Report #: QTR-2018-02

Table 1. Year-to-Date Filing Activity

King County Superior Court

Reporting Category	Year-to-Date and Annual Filing Activity ⁽¹⁾					2017-2018 change (+ means "increase")		% of 2018 Total Filing ⁽²⁾
	2014	2015	2016	2017	2018	Cases	Percentage	
Total (incl. RALJ)								
Year-to-Date Filing	26530	26580	26371	27007	27766	+759	+2.8%	
Annual Filing	52224	51652	51472	53115				
Criminal (excl. RALJ)								
Year-to-Date Filing	3177	3393	3241	3310	3017	-293	-8.9%	10.9%
Annual Filing	6213	6237	6632	6441				
General Civil (excl. Asbestos)								
Year-to-Date Filing	10826	10521	10712	10690	11144	+454	+4.2%	40.1%
Annual Filing	21378	21181	21181	21497				
Asbestos Cases (civil) ⁽³⁾								
Year-to-Date Filing	16	15	17	7	47	+40	+571%	0.2%
Annual Filing	40	36	41	20				
Domestic								
Year-to-Date Filing	4013	3868	3839	3896	3888	-8	-0.2%	14.0%
Annual Filing	7921	7559	7512	7597				
Probate								
Year-to-Date Filing	3010	3179	3186	3428	3380	-48	-1.4%	12.2%
Annual Filing	5920	6002	6073	6418				
Guardianship								
Year-to-Date Filing	486	466	508	477	515	+38	+7.9%	1.9%
Annual Filing	928	969	1008	949				
Adoption								
Year-to-Date Filing	231	231	246	265	220	-45	-17.0%	0.8%
Annual Filing	470	460	458	546				
Paternity								
Year-to-Date Filing	376	337	272	282	269	-13	-4.6%	1.0%
Annual Filing	702	650	528	539				
ITA – Civil Commitment								
Year-to-Date Filing	1890	1986	2076	2317	2407	+90	+3.9%	8.7%
Annual Filing	3852	4004	4152	4694				
Juvenile Dependency (DEP)								
Year-to-Date Filing	546	383	398	412	411	-1	-0.2%	1.5%
Annual Filing	940	848	727	793				
Juvenile Termination (TER)								
Year-to-Date Filing	116	90	132	153	177	+24	+15.7%	0.6%
Annual Filing	325	214	219	304				
Juvenile ARY/CHINS/OTHERS								
Year-to-Date Filing	144	109	127	111	143	+32	+28.8%	0.5%
Annual Filing	285	217	247	245				
Juvenile Truancy								
Year-to-Date Filing	738	961	879	904	1418	+514	+56.9%	5.1%
Annual Filing	1233	1369	1222	1547				
Juvenile Offender								
Year-to-Date Filing	857	916	644	646	645	-1	-0.2%	2.3%
Annual Filing	1802	1649	1295	1324				
Criminal RALJ								
Year-to-Date Filing	76	85	64	76	55	-21	-27.6%	0.2%
Annual Filing	172	180	111	136				
Civil RALJ								
Year-to-Date Filing	24	30	30	33	30	-3	-9.1%	0.1%
Annual Filing	47	57	66	65				
Matters Filed with Clerk ⁽⁴⁾								
Year-to-Date Filing	6895	4845	4462	6073	4627	-1446	-23.8%	
Annual Filing	12240	9581	8742	10903				

(1) New filings only (based on filing date), excluding re-opened cases (unable to count), and reflecting all documents received by 07/15/2018.

(2) New filings of each reporting category as percentage of "Year-to-Date Filing".

(3) "Matters Filed with Clerk" and "Additional Filings with Clerk" are not included in the "Total".

Chart 1-A. Quarterly Filing Activity
Total Judicial Cases Only ("Matters Filed with Clerk" excluded)

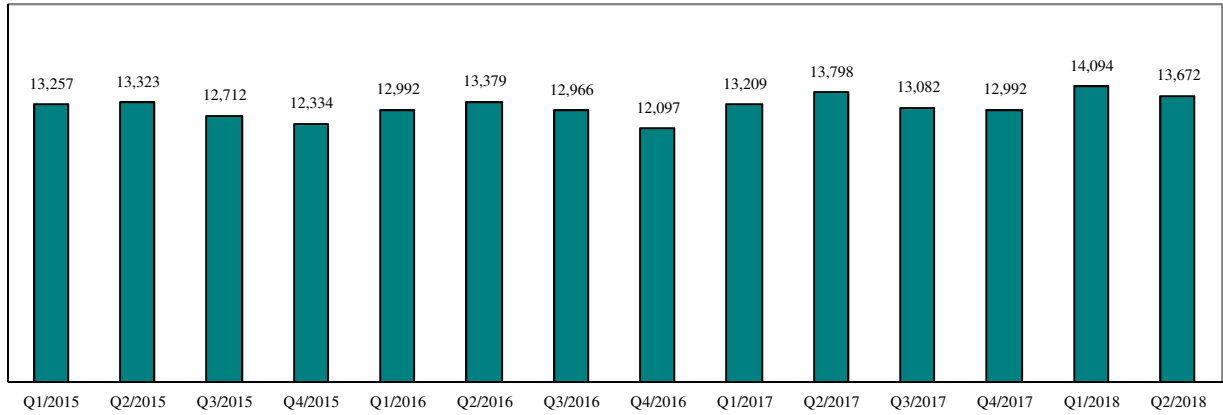
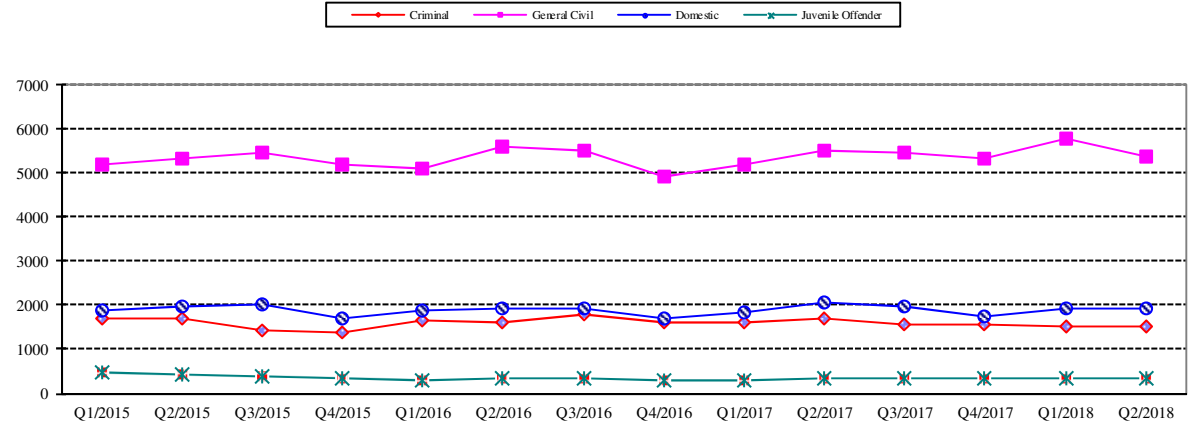


Chart 1-B. Quarterly Filings: Criminal, Domestic, General Civil and Juvenile Offender Cases Only



* Note: "General Civil" is specifically defined in this report. The category of "General Civil" does **not** include the following case types: domestic, probate, guardianship, adoption, paternity, ITA (civil commitment), juvenile cases (dependency, at-risk youth, child-in-need of service, civil RALJ, and tax filings that don't require judicial resources ("matters filed with clerk")). Please check the Appendix for the cause codes in the "General Civil" category.

Table 1-A. Post-Resolution Modifications (Domestic and Paternity Cases)

Based on Tracks Opened After Original Resolution Date

		2016Q1			2016Q2			2016Q3			2016Q4			Year 2016		
Location	Case Type	DMOD	DTBA	Total	DMOD	DTBA	Total	DMOD	DTBA	Total	DMOD	DTBA	Total	DMOD	DTBA	Total
KNT	Domestic	174	29	203	167	56	223	204	32	236	179	34	213	724	151	875
	Paternity	16	6	22	12	6	18	12	3	15	8	4	12	48	19	67
KNT Total		190	35	225	179	62	241	216	35	251	187	38	225	772	170	942
SEA	Domestic	154	71	225	154	76	230	173	51	224	133	65	198	614	263	877
	Paternity	6	9	15	11	8	19	14	7	21	14	2	16	45	26	71
SEA Total		160	80	240	165	84	249	187	58	245	147	67	214	659	289	948
KNT/SEA Total		350	115	465	344	146	490	403	93	496	334	105	439	1431	459	1890
		2017Q1			2017Q2			2017Q3			2017Q4			Year 2017		
Location	Case Type	DMOD	DTBA	Total	DMOD	DTBA	Total	DMOD	DTBA	Total	DMOD	DTBA	Total	DMOD	DTBA	Total
KNT	Domestic	172	30	202	218	57	275	170	23	193	171	32	203	731	142	873
	Paternity	9	5	14	9	6	15	19	2	21	13	2	15	50	15	65
KNT Total		181	35	216	227	63	290	189	25	214	184	34	218	781	157	938
SEA	Domestic	151	54	205	170	86	256	176	53	229	166	55	221	663	248	911
	Paternity	9	3	12	16	8	24	15	1	16	11	4	15	51	16	67
SEA Total		160	57	217	186	94	280	191	54	245	177	59	236	714	264	978
KNT/SEA Total		341	92	433	413	157	570	380	79	459	361	93	454	1495	421	1916
		2018Q1			2018Q2			2018Q3			2018Q4			Year 2018		
Location	Case Type	DMOD	DTBA	Total	DMOD	DTBA	Total	DMOD	DTBA	Total	DMOD	DTBA	Total	DMOD	DTBA	Total
KNT	Domestic	207	25	232	193	50	243							400	75	475
	Paternity	15	3	18	11	6	17							26	9	35
KNT Total		222	28	250	204	56	260							426	84	510
SEA	Domestic	172	51	223	182	82	264							354	133	487
	Paternity	11	2	13	5	4	9							16	6	22
SEA Total		183	53	236	187	86	273							370	139	509
KNT/SEA Total		405	81	486	391	142	533							796	223	1019

* DMOD = parenting plan modification track; DTBA = support modification track.

Correction for the first two quarters was made in September 2017.

Table 2. Number of Cases Resolved and Resolution Category (%)

King County Superior Court

Reporting Category	Q3/16	Q4/16	Q1/17	Q2/17	Q3/17	Q4/17	Q1/18	Q2/18*
Total Resolutions (excl. "Matters Filed with Clerk")	13274	12665	13067	13367	13411	13521	13230	13267
Criminal (excl. RALJ): # Resolved	1483	1432	1554	1536	1519	1550	1654	1438
Resolved by Jury Trial	2.5%	2.9%	3.3%	3.0%	3.6%	3.3%	2.1%	2.7%
Resolved by Non-Jury Trial	0.9%	0.1%	0.3%	0.5%	0.9%	0.6%	1.0%	1.3%
Resolved by Guilty Plea	80.3%	80.9%	79.5%	78.3%	79.3%	78.5%	78.3%	77.0%
Dismissal	15.5%	15.0%	15.8%	16.5%	15.0%	16.8%	17.7%	18.6%
Others	0.7%	1.1%	1.1%	1.6%	1.3%	0.9%	0.9%	0.4%
General Civil: # Resolved	5628	5301	5516	5608	5673	5745	5516	5523
Resolved by Jury Trial	0.5%	0.6%	0.2%	0.5%	0.5%	0.5%	0.3%	0.3%
Resolved by Non-Jury Trial	0.5%	0.3%	0.6%	0.4%	0.5%	0.5%	0.3%	0.3%
Summary Judgment	1.6%	1.6%	2.1%	2.2%	2.0%	1.8%	1.7%	1.9%
Default/ Uncontested	40.4%	38.3%	38.6%	38.0%	39.2%	39.8%	32.9%	36.9%
Arbitration	2.7%	3.2%	2.9%	3.1%	2.9%	3.0%	3.0%	3.1%
Settlement/Dismissal	49.4%	51.3%	51.9%	53.3%	51.5%	51.6%	55.7%	55.0%
Closure by Clerk	4.3%	3.4%	2.8%	1.5%	2.5%	2.0%	5.0%	1.6%
Others	0.8%	1.3%	1.1%	1.1%	1.0%	0.9%	1.0%	1.0%
Asbestos Cases (civil): # Resolved	8	16	9	7	8	8	13	37
Resolved by Jury Trial	12.5%	0.0%	0.0%	0.0%	0.0%	0.0%	7.7%	0.0%
Resolved by Non-Jury Trial	0.0%	0.0%	0.0%	0.0%	0.0%	12.5%	0.0%	0.0%
Summary Judgment	0.0%	0.0%	0.0%	28.6%	0.0%	12.5%	7.7%	10.8%
Default/ Uncontested	12.5%	6.3%	0.0%	28.6%	0.0%	12.5%	0.0%	0.0%
Arbitration	0.0%	0.0%	0.0%	0.0%	0.0%	0.0%	0.0%	0.0%
Settlement/Dismissal	62.5%	87.5%	66.7%	42.9%	87.5%	62.5%	84.6%	16.2%
Closure by Clerk	12.5%	6.3%	33.3%	0.0%	12.5%	0.0%	0.0%	0.0%
Others	0.0%	0.0%	0.0%	0.0%	0.0%	0.0%	0.0%	73.0%
Domestic: # Resolved	1881	1924	1829	1930	1902	1935	1814	1861
Resolved by Trial	4.8%	3.7%	4.1%	4.2%	3.8%	3.0%	3.1%	3.8%
Default/ Uncontested	10.2%	8.5%	9.4%	9.4%	8.6%	9.2%	10.6%	9.6%
Settlement /Dismissal	84.2%	86.6%	85.8%	84.9%	86.5%	87.0%	84.7%	85.1%
Closure by Clerk	0.4%	0.4%	0.4%	0.4%	0.4%	0.4%	0.8%	0.6%
Others	0.5%	0.7%	0.4%	1.2%	0.7%	0.4%	0.8%	1.0%
Probate: # Resolved	1473	1387	1680	1670	1472	1422	1590	1642
Personal Rep. Appointed	71.6%	70.7%	74.1%	73.4%	72.5%	74.6%	78.5%	77.2%
Dismissal	3.7%	2.7%	1.7%	4.1%	2.6%	2.1%	1.4%	1.5%
Closure by Clerk	0.0%	0.0%	0.0%	0.0%	0.0%	0.6%	0.1%	0.1%
Others	24.7%	26.6%	24.3%	22.6%	24.9%	22.6%	20.1%	21.2%
Guardianship: # Resolved	265	231	232	231	230	212	285	255
Guardian Appointed	47.6%	56.3%	50.9%	47.2%	53.5%	59.9%	54.7%	62.8%
Dismissal	51.7%	42.4%	48.3%	51.1%	45.2%	36.8%	43.2%	36.5%
Closure by Clerk	0.0%	0.0%	0.0%	0.0%	0.0%	0.9%	0.0%	0.8%
Others	0.8%	1.3%	0.9%	1.7%	1.3%	2.4%	2.1%	0.0%
Adoption: # Resolved	104	140	86	145	130	166	109	98
Resolved by Trial	0.0%	0.0%	0.0%	0.0%	0.8%	0.0%	1.8%	0.0%
Uncontested	3.9%	2.1%	3.5%	2.8%	2.3%	4.8%	9.2%	7.1%
Settlement /Dismissal	96.2%	97.9%	96.5%	97.2%	96.2%	95.2%	89.0%	92.9%
Closure by Clerk	0.0%	0.0%	0.0%	0.0%	0.0%	0.0%	0.0%	0.0%
Others	0.0%	0.0%	0.0%	0.0%	0.8%	0.0%	0.0%	0.0%
Paternity: # Resolved	141	121	127	150	158	109	144	125
Resolved by Trial	1.4%	1.7%	0.8%	0.7%	3.8%	2.8%	0.0%	0.8%
Summary Judgment	52.5%	43.8%	52.8%	50.0%	51.3%	38.5%	50.0%	47.2%
Default/ Uncontested	17.7%	20.7%	20.5%	18.7%	17.7%	23.9%	18.1%	24.8%
Settlement/Dismissal	27.7%	33.9%	26.0%	30.7%	27.2%	34.9%	31.3%	27.2%
Closure by Clerk	0.0%	0.0%	0.0%	0.0%	0.0%	0.0%	0.7%	0.0%
Others	0.7%	0.0%	0.0%	0.0%	0.0%	0.0%	0.0%	0.0%

Reflecting all documents received by 07/15/2018.

Table 2 (cont.). Number of Cases Resolved and Resolution Category (%)

King County Superior Court

Reporting Category	Q3/16	Q4/16	Q1/17	Q2/17	Q3/17	Q4/17	Q1/18	Q2/18*
ITA (civil commitment): # Resolved	1085	1045	1073	1157	1206	1174	1113	1228
Court Decision to Commit	63.0%	59.3%	60.5%	57.6%	60.0%	58.6%	67.3%	55.0%
Closed by Court	0.0%	0.0%	0.0%	0.0%	0.0%	0.0%	0.0%	0.0%
Dismissal	16.7%	26.1%	24.0%	25.4%	19.6%	16.4%	10.5%	13.7%
Others	20.3%	14.6%	15.6%	17.0%	20.5%	25.0%	22.2%	31.4%
Juv. Dependency: # Resolved	397	140	164	195	216	172	183	186
Finding of Dependency	87.4%	77.9%	78.7%	78.5%	74.5%	76.2%	74.3%	83.9%
Dismissal	12.3%	22.1%	21.3%	21.5%	25.5%	23.3%	25.7%	16.1%
Others	0.3%	0.0%	0.0%	0.0%	0.0%	0.6%	0.0%	0.0%
Juv. Terminations: # Resolved	103	49	50	56	72	51	91	72
Finding of Dependency	95.2%	81.6%	90.0%	80.4%	88.9%	82.4%	87.9%	91.7%
Dismissal	4.8%	18.4%	10.0%	19.6%	11.1%	17.7%	12.1%	8.3%
Others	0.0%	0.0%	0.0%	0.0%	0.0%	0.0%	0.0%	0.0%
Juv. ARY/CHINS/OTHER:# Resolved	93	70	37	41	101	48	53	60
Approve of Petition	55.9%	62.8%	35.1%	24.4%	36.6%	33.3%	30.2%	45.0%
Dismissal	44.1%	37.2%	59.5%	68.3%	63.4%	66.7%	69.8%	45.0%
Others	0.0%	0.0%	5.4%	7.3%	0.0%	0.0%	0.0%	10.0%
Juvenile Truancy: # Resolved	151	387	351	285	343	552	287	380
Approve of Petition	7.3%	23.5%	3.4%	2.5%	0.6%	0.2%	3.8%	3.2%
Dismissal	92.7%	76.5%	96.6%	97.5%	99.4%	99.8%	96.2%	96.8%
Others	0.0%	0.0%	0.0%	0.0%	0.0%	0.0%	0.0%	0.0%
Juvenile Offender: # Resolved	398	373	310	316	339	330	317	311
Resolved by Trial (Fact Finding)	1.0%	3.5%	3.3%	4.1%	2.7%	2.4%	4.1%	0.6%
Resolved by Guilty Plea	34.4%	33.0%	35.2%	35.4%	37.8%	37.3%	36.0%	31.5%
Dismissal	43.2%	40.5%	37.7%	38.6%	36.9%	42.7%	41.3%	49.5%
Deferred Disposition (DDSP)	15.8%	17.4%	18.7%	17.4%	17.1%	13.0%	14.2%	15.1%
Others (including Deferred Prosecution)	5.5%	5.6%	5.2%	4.4%	5.6%	4.6%	4.4%	3.2%
Criminal RALJ: # Resolved	40	33	30	34	32	33	41	38
RALJ Decision	82.5%	66.7%	76.7%	70.6%	53.1%	66.7%	68.3%	63.2%
Dismissal	10.0%	15.2%	20.0%	17.7%	46.9%	30.3%	26.8%	34.2%
Others	7.5%	18.2%	3.3%	11.8%	0.0%	3.0%	4.9%	2.6%
Civil RALJ: # Resolved	24	16	19	15	10	14	20	13
RALJ Decision	37.5%	50.0%	36.8%	53.3%	60.0%	42.9%	55.0%	53.9%
Dismissal	25.0%	18.8%	42.1%	33.3%	40.0%	50.0%	40.0%	38.5%
Others	37.5%	31.3%	21.1%	13.3%	0.0%	7.1%	5.0%	7.7%

* Reflecting all documents received by 07/15/2018.

Chart 2-A. Quarterly Resolutions
Total Judicial Cases Only ("Matters Filed with Clerk" excluded)

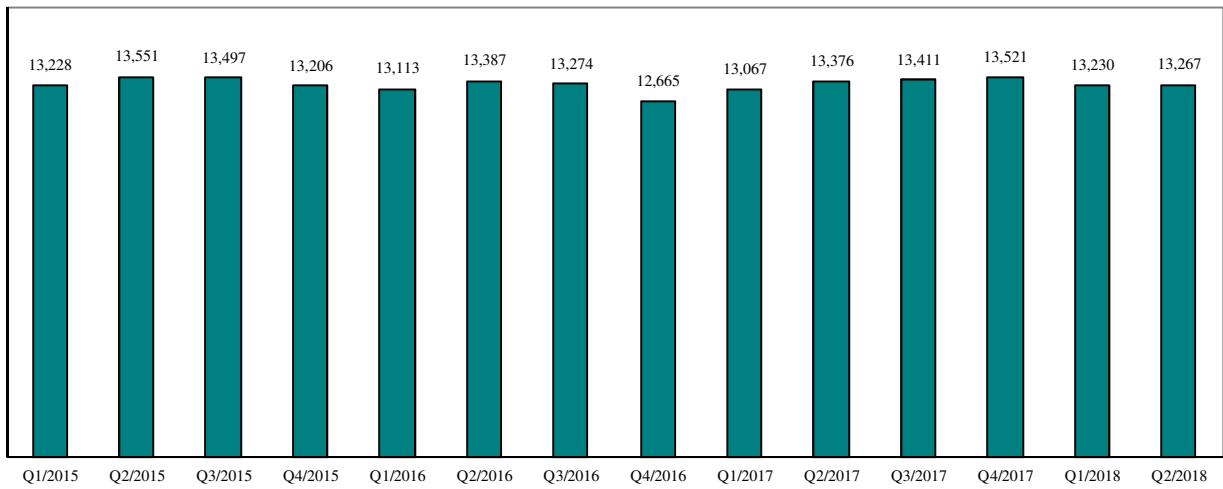
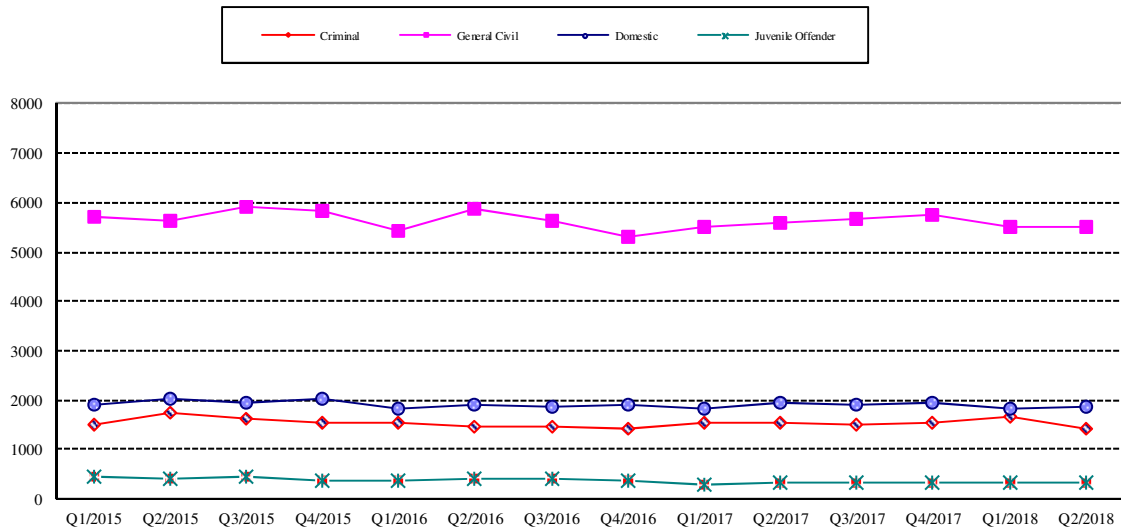


Chart 2-B. Quarterly Resolutions: Criminal, Dmestic, General Civil and Juvenile Offender Cases Only



* Note: "General Civil" is specifically defined in this report. The category of "General Civil" does **not** include the following case types: domestic, probate, guardianship, adoption, paternity, mental illness, juvenile cases (dependency, at-risk youth, child-in-need of service), civil RALJ, and tax filings that don't require judicial resources ("matters filed with clerk"). Please check the Appendix for the cause codes in the "General Civil" category.

Table 3. Age of Resolved Cases
King County Superior Court

Reporting Category	Age of Cases at Resolution							
	Q3/16	Q4/16	Q1/17	Q2/17	Q3/17	Q4/17	Q1/18	Q2/18*
Criminal (excl. RALJ)								
Age (days)								
50% Cases Resolved by Day	108	112	127	125	126	132	142	129
90% Cases Resolved by Day	328	317	371	371	361	408	435	382
Comparison with Court Standard of								
90% in 4 months	56%	53%	47%	49%	48%	46%	43%	48%
98% in 6 months	74%	71%	65%	65%	67%	64%	61%	63%
100% in 9 months	86%	87%	81%	81%	81%	81%	88%	79%
General Civil ⁽¹⁾								
Age (days)								
50% Cases Resolved by Day	28	42	40	41	40	42	41	36
90% Cases Resolved by Day	357	357	367	366	358	357	372	355
Comparison with Court Standard of								
90% in 12 months	92%	89%	90%	88%	91%	91%	88%	91%
98% in 18 months	98%	97%	98%	97%	98%	97%	96%	98%
100% in 24 months	99%	99%	99%	99%	99%	99%	99%	99%
Domestic								
Age (days)								
50% Cases Resolved by Day	147	154	172	144	146	140	168	156
90% Cases Resolved by Day	371	368	383	372	381	397	386	392
Comparison with Court Standard of								
90% in 8 months	66%	65%	62%	68%	67%	68%	66%	65%
98% in 10 months	78%	78%	76%	78%	76%	78%	76%	74%
100% in 14 months	94%	94%	94%	94%	91%	92%	92%	92%
Probate								
Age (days)								
50% Cases Resolved by Day	0	0	0	0	0	0	0	0
90% Cases Resolved by Day	24	8	4	22	15	13	8	7
Comparison with Court Standard of								
90% in 8 months	98%	96%	98%	97%	98%	97%	98%	98%
98% in 18 months	99%	99%	99%	99%	99%	99%	98%	99%
100% in 36 months	100%	100%	99%	100%	99%	99%	99%	99%
Guardianship								
Age (days)								
50% Cases Resolved by Day	71	65	73	63	69	63	59	57
90% Cases Resolved by Day	273	208	334	304	284	178	254	246
Comparison with Court Standard of								
90% in 8 months	85%	94%	85%	88%	88%	94%	90%	89%
98% in 18 months	98%	100%	97%	98%	99%	99%	97%	98%
100% in 36 months	100%	100%	100%	100%	100%	100%	99%	99%
Adoption								
Age (days)								
50% Cases Resolved by Day	99	69	55	61	79	53	52	84
90% Cases Resolved by Day	714	257	437	227	376	262	397	227
Comparison with Court Standard of								
90% in 8 months	68%	87%	83%	89%	82%	88%	83%	92%
98% in 10 months	79%	94%	84%	92%	85%	93%	87%	95%
100% in 14 months	81%	99%	88%	95%	91%	96%	91%	97%
Paternity								
Age (days)								
50% Cases Resolved by Day	172	154	143	141	140	126	152	127
90% Cases Resolved by Day	296	367	291	317	335	328	289	304
Comparison with Court Standard of								
90% in 8 months	71%	71%	82%	82%	79%	75%	81%	77%
98% in 10 months	92%	82%	93%	87%	87%	86%	93%	89%
100% in 14 months	97%	96%	99%	95%	95%	94%	97%	97%

Table 3 (cont.) Age of Resolved Cases

King County Superior Court

Reporting Category	Age of Cases at Resolution							
	Q3/16	Q4/16	Q1/17	Q2/17	Q3/17	Q4/17	Q1/18	Q2/18*
ITA (civil commitment) **								
Age (days)								
50% Cases Resolved by Day	4	4	4	4	4	4	4	5
90% Cases Resolved by Day	15	13	14	14	18	21	21	36
Juvenile Dependency (DEP)								
Age (days)								
50% Cases Resolved by Day	278	132	112	124	153	127	93	122
90% Cases Resolved by Day	570	283	232	268	389	379	227	268
Comparison with Court Standard of								
90% in 8 months	46%	85%	90%	82%	74%	82%	92%	88%
98% in 10 months	60%	90%	94%	90%	81%	87%	97%	93%
100% in 14 months	77%	96%	99%	95%	93%	90%	100%	99%
Juvenile Termination (TER)								
Age (days)								
50% Cases Resolved by Day	272	182	131	84	141	143	147	83
90% Cases Resolved by Day	680	679	437	453	445	621	414	333
Comparison with Court Standard of								
90% in 8 months	45%	63%	72%	81%	70%	73%	69%	84%
98% in 10 months	61%	68%	76%	83%	70%	73%	72%	89%
100% in 14 months	73%	72%	90%	89%	89%	73%	92%	96%
Juv ARY/CHINS/OTHER								
Age (days)								
50% Cases Resolved by Day	208	60	57	54	224	42	45	39
90% Cases Resolved by Day	730	338	230	223	3526	252	236	220
Comparison with Court Standard of								
90% in 8 months	58%	86%	91%	95%	58%	85%	92%	95%
98% in 10 months	62%	86%	97%	95%	64%	95%	100%	95%
100% in 14 months	74%	93%	100%	100%	69%	100%	100%	100%
Juvenile Truancy**								
Age (days)								
50% Cases Resolved by Day	483	320	343	394	436	230	309	370
90% Cases Resolved by Day	591	608	456	777	1183	1093	423	703
Juvenile Offender								
Age (days)								
50% Cases Resolved by Day	90	93	94	86	85	89	105	99
90% Cases Resolved by Day	309	340	245	261	254	251	375	358
Comparison with Court Standard of								
90% in 4 months	60%	61%	59%	65%	63%	68%	59%	59%
98% in 6 months	79%	75%	78%	79%	80%	82%	74%	77%
100% in 9 months	87%	87%	92%	91%	92%	91%	86%	86%
Criminal RALJ								
Age (days)								
50% Cases Resolved by Day	292	273	349	269	333	250	295	272
90% Cases Resolved by Day	449	497	586	636	629	562	539	574
Civil RALJ								
Age (days)								
50% Cases Resolved by Day	165	151	163	161	203	165	180	164
90% Cases Resolved by Day	227	326	350	255	584	241	262	221

* Reflecting all documents received by 07/15/2018.

** No standard yet.

Table 4. Active Pending Caseload Statistics
King County Superior Court

Reporting Category	Q3/16	Q4/16	Q1/17	Q2/17	Q3/17	Q4/17	Q1/18	Q2/18*
Total (incl. RALJ)								
Previous Pending (+)	18216	18678	19119	19087	19674	19654	19305	20656
New Filing (+)	12966	12097	13209	13798	13082	12992	14094	13672
Resolved (-)	13274	12665	13067	13376	13411	13521	13230	13267
End Pending	18678	19119	19087	19674	19654	19305	20656	21537
Resolution Rate**	1.020	1.047	0.989	0.969	1.025	1.035	0.939	0.970
Criminal (excl. RALJ)								
Previous Pending (+)	2849	3050	3139	3116	3242	3201	3172	3048
New Filing (+)	1780	1610	1606	1704	1583	1546	1505	1512
Resolved (-)	1483	1432	1554	1536	1519	1550	1654	1438
End Pending	3050	3193	3116	3242	3201	3172	3048	3113
Resolution Rate**	0.833	0.889	0.968	0.901	0.960	1.003	1.099	0.951
General Civil								
Previous Pending (+)	6803	7044	7752	7336	7338	7424	7167	7761
New Filing (+)	5531	4931	5199	5491	5477	5323	5762	5382
Resolved (-)	5628	5301	5516	5608	5673	5745	5516	5523
End Pending	7044	7752	7336	7338	7424	7167	7761	7991
Resolution Rate**	1.018	1.075	1.061	1.021	1.036	1.079	0.957	1.026
Asbestos Cases (civil) ⁽¹⁾								
Previous Pending (+)	50	58	46	42	39	36	36	53
New Filing (+)	18	6	5	2	6	7	30	17
Resolved (-)	8	16	9	7	8	8	13	37
End Pending	58	46	42	39	36	36	53	35
Resolution Rate**	0.444	2.667	1.800	3.500	1.333	1.143	0.433	2.176
Domestic								
Previous Pending (+)	4416	4465	4337	4386	4497	4585	4366	4547
New Filing (+)	1947	1720	1850	2046	1965	1732	1944	1944
Resolved (-)	1881	1924	1829	1930	1902	1935	1814	1861
End Pending	4465	4337	4386	4497	4585	4366	4547	4683
Resolution Rate**	0.966	1.119	0.989	0.943	0.968	1.117	0.933	0.957
Probate								
Previous Pending (+)	703	715	684	808	814	869	909	1027
New Filing (+)	1454	1425	1783	1645	1501	1488	1686	1694
Resolved (-)	1473	1387	1680	1670	1472	1422	1590	1642
End Pending	715	684	808	814	869	909	1027	1102
Resolution Rate**	1.013	0.973	0.942	1.045	0.981	0.956	0.943	0.969
Guardianship								
Previous Pending (+)	341	337	329	330	351	345	376	361
New Filing (+)	257	247	228	249	225	244	258	257
Resolved (-)	265	231	232	231	230	212	285	255
End Pending	337	329	330	351	345	376	361	380
Resolution Rate**	1.031	0.935	1.018	0.928	1.022	0.869	1.105	0.992
Adoption								
Previous Pending (+)	166	163	135	182	170	177	155	158
New Filing (+)	101	111	133	132	136	145	110	110
Resolved (-)	104	140	86	145	130	166	109	98
End Pending	163	135	182	170	177	155	158	170
Resolution Rate**	1.030	1.261	0.647	1.098	0.956	1.145	0.991	0.891
Paternity								
Previous Pending (+)	261	232	253	260	266	241	245	224
New Filing (+)	108	148	131	151	136	119	120	149
Resolved (-)	141	121	127	150	158	109	144	125
End Pending	232	253	260	266	241	245	224	252
Resolution Rate**	1.306	0.818	0.969	0.993	1.162	0.916	1.200	0.839

* Reflecting all documents received by 07/15/2018.

** A value of "Resolution Rate" less than one indicates the resolution pace is slower than the filing pace.

Table 4 (cont.) Active Pending Caseload Statistics
King County Superior Court

Reporting Category	Q3/16	Q4/16	Q1/17	Q2/17	Q3/17	Q4/17	Q1/18	Q2/18*
ITA (civil commitment)								
Previous Pending (+)	118	82	60	78	148	141	126	186
New Filing (+)	1048	1028	1092	1225	1200	1177	1173	1234
Resolved (-)	1085	1045	1073	1157	1206	1174	1113	1228
End Pending	82	60	78	148	141	126	186	191
Resolution Rate**	1.035	1.017	0.983	0.944	1.005	0.997	0.949	0.995
Juvenile Dependency (DEP)								
Previous Pending (+)	504	289	300	345	353	321	357	392
New Filing (+)	175	162	210	202	183	205	216	195
Resolved (-)	397	140	164	195	216	172	183	186
End Pending	289	300	345	353	321	357	392	406
Resolution Rate**	2.269	0.864	0.781	0.965	1.118	0.839	0.847	0.954
Juvenile Termination (TER)								
Previous Pending (+)	181	128	128	148	175	171	196	189
New Filing (+)	41	52	70	83	68	83	85	92
Resolved (-)	103	49	50	56	72	51	91	72
End Pending	128	128	148	175	171	196	189	209
Resolution Rate**	2.512	0.942	0.714	0.675	1.059	0.614	1.071	0.783
Juv ARY/CHINS/OTHERS								
Previous Pending (+)	136	98	86	103	120	81	102	120
New Filing (+)	51	61	52	59	59	69	72	71
Resolved (-)	93	70	37	41	101	48	53	60
End Pending	98	86	103	120	81	102	120	130
Resolution Rate**	1.824	1.148	0.712	0.695	1.712	0.696	0.736	0.845
Juvenile Truancy								
Previous Pending (+)	1430	1374	1237	1389	1513	1395	1421	1899
New Filing (+)	93	250	499	405	174	467	767	651
Resolved (-)	151	387	351	285	343	552	287	380
End Pending	1374	1237	1389	1513	1395	1421	1899	2172
Resolution Rate**	1.624	1.548	0.703	0.704	1.971	1.182	0.374	0.584
Juvenile Offender								
Previous Pending (+)	538	504	441	430	488	502	504	532
New Filing (+)	328	298	313	333	329	334	322	323
Resolved (-)	398	373	310	316	339	330	317	311
End Pending	504	441	430	488	502	504	532	554
Resolution Rate**	1.213	1.252	0.990	0.949	1.030	0.988	0.984	0.963
Criminal RALJ								
Previous Pending (+)	131	107	107	108	129	129	132	124
New Filing (+)	14	33	24	52	26	34	30	25
Resolved (-)	40	33	30	34	32	33	41	38
End Pending	107	107	108	129	129	132	124	111
Resolution Rate**	2.857	1.000	1.25	0.854	1.231	0.971	1.367	1.520
Civil RALJ								
Previous Pending (+)	36	32	31	26	31	36	41	35
New Filing (+)	20	15	14	19	14	19	14	16
Resolved (-)	24	16	19	15	10	14	20	13
End Pending	32	31	26	31	36	41	35	38
Resolution Rate**	1.200	1.067	1.357	0.789	0.714	0.737	1.429	0.813

* Reflecting all documents received by 07/15/2018.

** A value of "Resolution Rate" less than one indicates the resolution pace is slower than the filing pace.

Chart 4-A. Active Pending Caseload at Quarter End
Total Judicial Cases Only ("Matters Filed with Clerk" excluded)

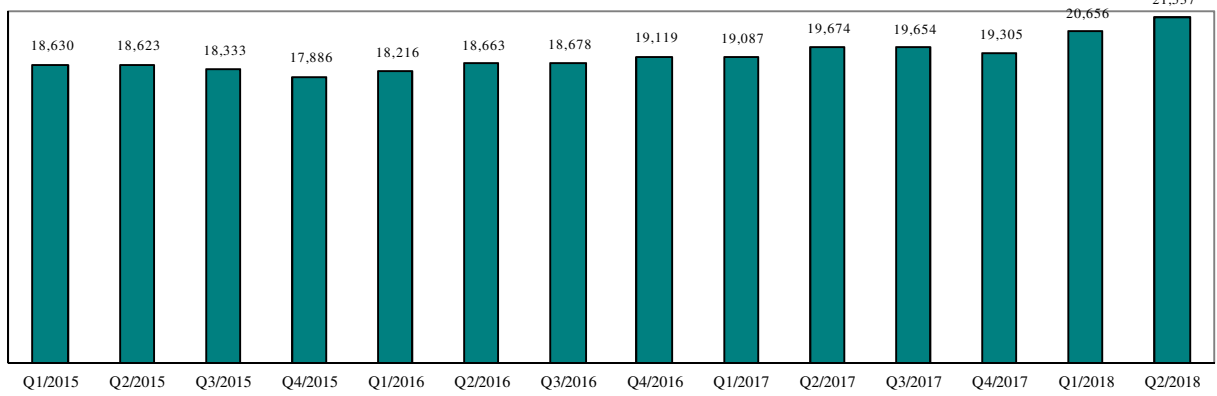


Chart 4-B. Active Pending Caseload at Quarter End: Domestic and General Civil Cases Only

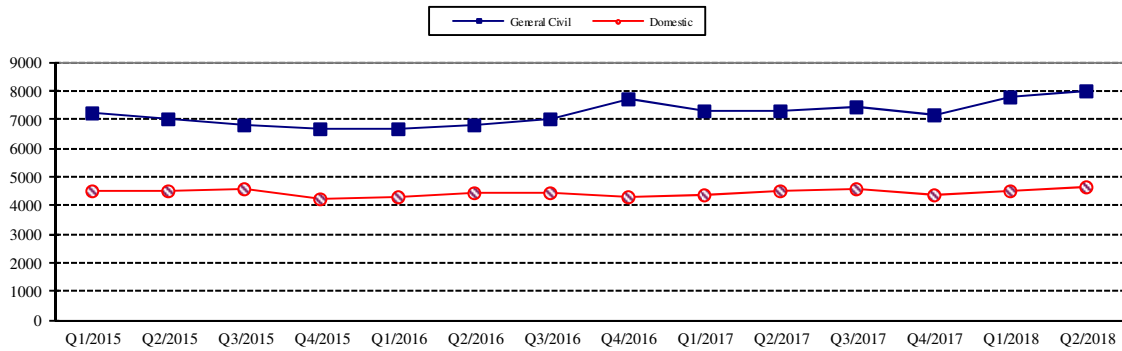
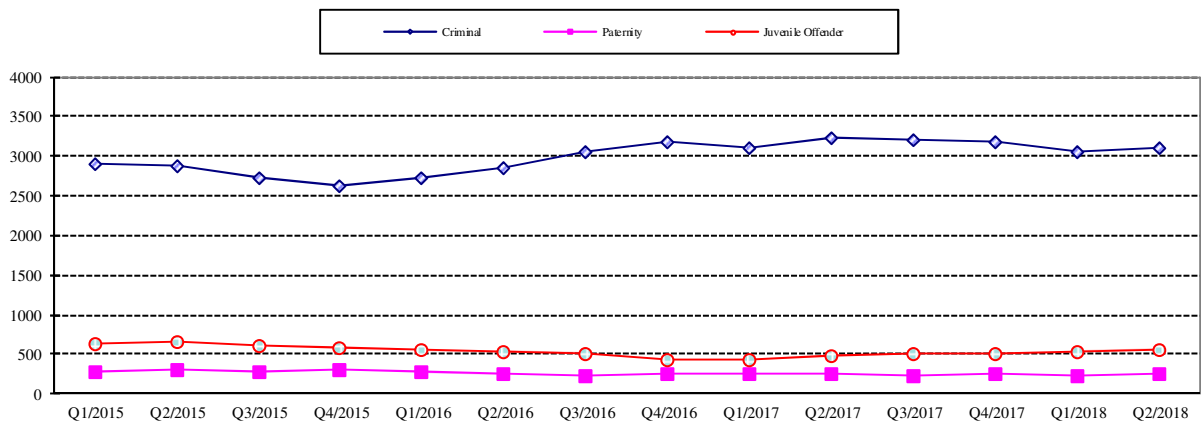


Chart 4-C. Active Pending Caseload at Quarter End:
Criminal, Juvenile Offender, Paternity and Dependency Cases Only



* Note: "General Civil" is specifically defined in this report. The category of "General Civil" does **not** include the following case types: domestic, probate, guardianship, adoption, paternity, mental illness, juvenile cases (dependency, at-risk youth, child-in-need of service), civil RALJ, and tax filings that don't require judicial resources ("matters filed with clerk"). Please check the Appendix for the cause codes in the "General Civil" category.

Table 5. Age of Pending Cases

King County Superior Court

Reporting Category	Age of Pending Cases and # of Cases in Each Age Interval							
	Q3/16	Q4/16	Q1/17	Q2/17	Q3/17	Q4/17	Q1/18	Q2/18*
Criminal (excl. RALJ): # of Cases	3050	3193	3116	3242	3201	3172	3048	3113
Age (days)								
Median (50 percentile)	101	111	115	106	117	119	124	114
95 percentile	542	564	562	529	566	542	541	567
# of Cases in Age Interval								
0 - 60 days (0 - 2 months)	1046	964	993	1068	888	845	892	967
61 - 120 days (3 - 4 months)	629	709	602	699	743	747	596	647
121 - 180 days (5 - 6 months)	442	511	473	417	498	476	505	434
181 - 270 days (7 - 9 months)	389	387	436	408	407	465	407	413
> 270 days (> 9 months)	544	622	612	650	665	639	648	652
General Civil: # of Cases	7044	7752	7336	7338	7424	7167	7761	7991
Age (days)								
Median (50 percentile)	131	149	149	129	132	132	121	136
95 percentile	501	514	520	506	527	510	481	492
# of Cases in Age Interval								
0 - 120 days (0 - 4 months)	3306	3270	3145	3515	3465	3315	3878	3673
121 - 240 days (5 - 8 months)	1885	2095	1923	1692	1922	1782	1923	2168
241 - 360 days (9 - 12 months)	1031	1374	1283	1175	1059	1147	1121	1215
361 - 540 days (13 - 18 months)	531	669	664	658	638	628	547	636
541 - 720 days (19 - 24 months)	180	190	173	163	203	167	162	181
> 720 days (> 24 months)	111	154	149	135	137	128	130	118
Asbestos Cases (civil) ⁽¹⁾ : # of Cases	58	46	42	39	36	36	53	35
Age (days)								
Median (50 percentile)	339	235	249	330	390	436	81	172
95 percentile	939	1013	652	652	549	641	614	705
# of Cases in Age Interval								
0 - 120 days (0 - 4 months)	17	8	7	2	6	7	31	9
121 - 240 days (5 - 8 months)	9	17	12	7	4	5	9	13
241 - 360 days (9 - 12 months)	3	8	13	16	3	5	1	4
361 - 540 days (13 - 18 months)	17	4	5	12	21	13	6	4
541 - 720 days (19 - 24 months)	4	6	4	2	1	5	5	1
> 720 days (> 24 months)	8	3	1	0	1	1	1	
Domestic: # of Cases	4465	4337	4386	4497	4585	4366	4547	4683
Age (days)								
Median (50 percentile)	116	129	123	113	118	136	130	121
95 percentile	559	691	773	713	713	715	752	754
# of Cases in Age Interval								
0 - 120 days (0 - 4 months)	2272	2041	2149	2342	2296	2022	2172	2324
121 - 240 days (5 - 8 months)	1185	1155	1132	1023	1200	1172	1145	1112
241 - 360 days (9 - 12 months)	551	641	584	561	510	624	648	625
361 - 540 days (13 - 18 months)	226	227	212	262	264	242	243	264
> 540 days (> 18 months)	231	273	309	309	315	306	339	358
Probate: # of Cases	715	684	808	814	869	909	1027	1102
Age (days)								
Median (50 percentile)	393	377	343	387	416	378	402	418
95 percentile	1277	1362	1418	1507	1591	1608	1677	1746
# of Cases in Age Interval								
0 - 120 days (0 - 4 months)	160	150	204	172	167	202	221	185
121 - 240 days (5 - 8 months)	118	109	108	132	131	118	158	186
241 - 360 days (9 - 12 months)	72	81	109	81	101	113	92	132
361 - 540 days (13 - 18 months)	86	68	89	106	108	106	155	156
> 540 days (> 18 months)	279	276	298	323	362	370	401	443

Reflecting all documents received by 07/15/2018.

Table 5 (cont.). Age of Pending Cases

King County Superior Court

Reporting Category	Age of Pending Cases and # of Cases in Each Age Interval							
	Q3/16	Q4/16	Q1/17	Q2/17	Q3/17	Q4/17	Q1/18	Q2/18*
Guardianship: # of Cases	337	329	330	351	345	376	361	380
Age (days)								
Median (50 percentile)	81	83	86	86	102	89	111	104
95 percentile	506	510	498	487	550	570	633	700
# of Cases in Age Interval								
0 - 120 days (0 - 4 months)	214	189	189	211	189	218	187	199
121 - 240 days (5 - 8 months)	54	74	65	62	73	51	68	59
241 - 360 days (9 - 12 months)	35	28	39	37	28	41	29	40
361 - 540 days (13 - 18 months)	19	23	26	28	37	42	42	40
> 540 days (> 18 months)	15	15	11	13	18	24	35	42
Adoption: # of Cases	163	135	182	170	177	155	158	170
Age (days)								
Median (50 percentile)	106	116	88	110	88	126	135	118
95 percentile	492	600	471	562	513	557	598	650
# of Cases in Age Interval								
0 - 120 days (0 - 4 months)	91	68	110	88	104	74	76	85
121 - 240 days (5 - 8 months)	34	31	31	36	31	37	41	26
241 - 360 days (9 - 12 months)	22	14	20	18	20	19	19	28
361 - 540 days (13 - 18 months)	11	14	16	18	14	17	12	19
> 540 days (> 18 months)	5	8	5	10	8	8	10	12
Paternity: # of Cases	232	253	260	266	241	245	224	252
Age (days)								
Median (50 percentile)	117	89	106	91	83	108	92	89
95 percentile	403	324	388	388	362	339	362	373
# of Cases in Age Interval								
0 - 120 days (0 - 4 months)	122	149	143	166	152	125	135	153
121 - 240 days (5 - 8 months)	71	70	75	56	49	91	56	62
241 - 360 days (9 - 12 months)	22	23	26	27	27	19	21	24
361 - 540 days (13 - 18 months)	14	9	12	15	10	8	10	8
> 540 days (> 18 months)	3	2	4	2	3	2	2	5
ITA (civil commitment): # of Cases	82	60	78	148	141	126	186	191
Age (days)								
Median (50 percentile)	5	12	5	8	16	14	20	13
95 percentile	442	545	547	103	131	194	216	307
# of Cases in Age Interval								
0 - 120 days (0 - 4 months)	70	47	74	141	129	110	166	166
121 - 240 days (5 - 8 months)	0	6	0	3	8	14	12	9
> 240 days (> 8 months)	12	7	4	4	4	2	8	16
Juv Dependency (DEP): # of Cases	289	300	345	353	321	357	392	406
Age (days)								
Median (50 percentile)	82	89	73	94	81	94	114	112
95 percentile	382	376	366	400	251	313	394	478
# of Cases in Age Interval								
0 - 60 days (0 - 2 months)	119	125	142	125	133	124	139	101
61 - 120 days (3 - 4 months)	71	71	80	95	76	94	69	113
121 - 180 days (5 - 6 months)	42	51	39	59	46	57	61	53
181 - 270 days (7 - 9 months)	23	28	48	26	53	44	62	44
> 270 days (> 9 months)	34	25	36	48	13	38	61	95
Juv Termination (TER): # of Cases	128	128	148	175	171	196	189	209
Age (days)								
Median (50 percentile)	152	177	106	103	128	136	114	129
95 percentile	645	527	617	603	604	577	527	514
# of Cases in Age Interval								
0 - 60 days (0 - 2 months)	23	20	55	57	48	53	67	66
61 - 120 days (3 - 4 months)	29	34	21	43	32	41	30	35
121 - 180 days (5 - 6 months)	25	14	17	16	27	27	32	27
181 - 270 days (7 - 9 months)	14	30	10	15	28	29	15	35
> 270 days (> 9 months)	37	30	45	44	36	46	45	46

* Reflecting all documents received by 07/15/2018.

Table 5 (cont.). Age of Pending Cases

King County Superior Court

Reporting Category	Age of Pending Cases and # of Cases in Each Age Interval							
	Q3/16	Q4/16	Q1/17	Q2/17	Q3/17	Q4/17	Q1/18	Q2/18*
Juv. ARY/CHINS/OTHER: # of Cases	98	86	103	120	81	102	120	130
Age (days)								
Median (50 percentile)	169	149	158	169	99	98	128	160
95 percentile	3813	3905	3938	4012	405	497	587	678
# of Cases in Age Interval								
0 - 60 days (0 - 2 months)	25	23	30	30	32	30	36	24
61 - 120 days (3 - 4 months)	14	13	18	13	13	30	20	26
121 - 180 days (5 - 6 months)	16	14	10	24	9	14	21	20
181 - 270 days (7 - 9 months)	6	6	12	8	18	12	21	25
> 270 days (> 9 months)	37	30	33	45	9	16	22	35
Juvenile Truancy: # of Cases	1374	1237	1389	1513	1395	1421	1899	2172
Age (days)								
Median (50 percentile)	236	290	213	157	206	236	124	142
95 percentile	1017	1334	1199	1139	961	662	713	577
# of Cases in Age Interval								
0 - 60 days (0 - 2 months)	74	173	369	276	167	355	569	411
61 - 120 days (3 - 4 months)	47	78	195	315	69	97	351	484
121 - 180 days (5 - 6 months)	296	85	125	249	316	116	240	445
181 - 270 days (7 - 9 months)	430	228	60	173	400	299	95	344
> 270 days (> 9 months)	527	673	640	500	443	554	644	488
Juvenile Offender: # of Cases	504	441	430	488	502	504	532	554
Age (days)								
Median (50 percentile)	92	98	91	85	88	96	91	95
95 percentile	689	628	646	745	806	821	636	522
# of Cases in Age Interval								
0 - 60 days (0 - 2 months)	176	142	166	189	179	162	195	200
61 - 120 days (3 - 4 months)	109	106	84	109	131	133	118	122
121 - 180 days (5 - 6 months)	65	66	56	51	61	70	68	63
181 - 270 days (7 - 9 months)	44	45	43	38	38	57	64	69
> 270 days (> 9 months)	110	82	81	101	93	82	87	100
Criminal RALJ: # of Cases	107	107	108	129	129	132	124	111
Age (days)								
Median (50 percentile)	227	208	183	115	163	196	189	191
95 percentile	656	639	694	718	810	894	947	1038
# of Cases in Age Interval								
0 - 60 days (0 - 2 months)	8	17	23	36	19	21	19	20
61 - 120 days (3 - 4 months)	17	16	6	31	24	21	22	16
121 - 180 days (5 - 6 months)	10	11	25	7	30	16	21	17
181 - 270 days (7 - 9 months)	27	20	12	17	19	38	21	21
> 270 days (> 9 months)	45	43	42	38	37	36	41	37
Civil RALJ: # of Cases	32	31	26	31	36	41	35	38
Age (days)								
Median (50 percentile)	84	96	100	67	106	105	124	107
95 percentile	522	262	228	270	349	293	383	474
# of Cases in Age Interval								
0 - 60 days (0 - 2 months)	11	9	8	15	11	11	10	15
61 - 120 days (3 - 4 months)	12	11	11	5	11	12	7	5
121 - 180 days (5 - 6 months)	5	6	4	6	9	10	12	10
181 - 270 days (7 - 9 months)	1	4	3	4	2	5	4	4
> 270 days (> 9 months)	3	1	0	1	3	3	2	4

* Reflecting all documents received by 07/15/2018.

Table 6. Seattle vs. Regional Justice Center (KNT): Filing, Resolution, Pending Caseload (%)

King County Superior Court

	Q2/17		Q3/17		Q4/17		Q1/18		Q2/18	
	SEA	KNT	SEA	KNT	SEA	KNT	SEA	KNT	SEA	KNT
Filings Total <i>(excl. filings with clerk)</i>	64%	36%	64%	36%	63%	37%	63%	37%	64%	36%
Criminal (excl. RALJ)	56%	44%	55%	45%	55%	45%	56%	44%	57%	43%
General Civil (excl. RALJ)	57%	43%	54%	46%	56%	44%	54%	46%	56%	44%
Domestic	58%	42%	61%	39%	59%	41%	60%	40%	59%	41%
Probate	77%	23%	75%	25%	76%	24%	75%	25%	75%	25%
Guardianship	64%	36%	66%	34%	63%	37%	56%	44%	66%	34%
Adoption	76%	24%	74%	26%	72%	28%	75%	25%	74%	26%
Paternity	46%	54%	47%	53%	31%	69%	45%	55%	46%	54%
ITA (civil commitment)	100%	---	100%	---	100%	---	100%	---	100%	---
Juv. Dependency (DEP)	66%	34%	62%	38%	61%	39%	61%	39%	70%	30%
Juv. Termination (TER)	70%	30%	65%	35%	59%	41%	57%	43%	75%	25%
Juvenile ARY/CHINS/Other	56%	44%	49%	51%	48%	52%	51%	49%	44%	56%
Juvenile Truancy	36%	64%	97%	3%	44%	56%	48%	52%	50%	50%
Juvenile Offender	100%	---	100%	---	100%	---	100%	---	100%	---
Criminal RALJ	98%	2%	69%	31%	94%	6%	87%	13%	92%	8%
Civil RALJ	79%	21%	36%	64%	90%	10%	93%	7%	88%	12%
Resolution Total <i>(excl. filings with clerk)</i>	65%	35%	64%	36%	64%	36%	63%	37%	63%	37%
Criminal (excl. RALJ)	55%	45%	58%	42%	55%	45%	58%	42%	58%	42%
General Civil (excl. RALJ)	58%	42%	56%	44%	55%	45%	54%	46%	55%	45%
Domestic	60%	40%	61%	39%	60%	40%	58%	42%	58%	42%
Probate	77%	23%	74%	26%	76%	24%	75%	25%	75%	25%
Guardianship	65%	35%	52%	48%	64%	36%	61%	39%	64%	36%
Adoption	75%	25%	70%	30%	75%	25%	69%	31%	80%	20%
Paternity	49%	51%	49%	51%	44%	56%	44%	56%	43%	57%
ITA (civil commitment)	100%	---	100%	---	100%	---	100%	---	100%	---
Juv. Dependency (DEP)	68%	32%	64%	36%	63%	37%	55%	45%	61%	39%
Juv. Termination (TER)	64%	36%	68%	32%	59%	41%	54%	46%	60%	40%
Juvenile ARY/CHINS/Other	44%	56%	64%	36%	52%	48%	34%	64%	45%	55%
Juvenile Truancy	42%	58%	47%	53%	61%	39%	41%	59%	30%	70%
Juvenile Offender	100%	---	100%	---	100%	---	100%	---	100%	---
Criminal RALJ	94%	6%	94%	6%	94%	6%	93%	7%	82%	18%
Civil RALJ	93%	7%	80%	20%	71%	29%	50%	50%	92%	8%
Pending Total <i>(excl. filings with clerk)</i>	62%	38%	62%	38%	62%	38%	62%	38%	62%	38%
Criminal (excl. RALJ)	57%	43%	55%	45%	56%	44%	55%	45%	54%	46%
General Civil (excl. RALJ)	66%	34%	65%	35%	66%	34%	64%	36%	64%	36%
Domestic	58%	42%	58%	42%	57%	43%	58%	42%	58%	42%
Probate	78%	22%	79%	21%	79%	21%	79%	21%	79%	21%
Guardianship	57%	43%	66%	34%	65%	35%	61%	39%	61%	39%
Adoption	70%	30%	73%	27%	70%	30%	75%	25%	72%	28%
Paternity	50%	50%	49%	51%	42%	58%	42%	58%	43%	57%
ITA (civil commitment)	100%	---	100%	---	100%	---	100%	---	100%	---
Juv. Dependency (DEP)	64%	36%	63%	37%	60%	40%	63%	37%	67%	33%
Juv. Termination (TER)	64%	36%	63%	37%	62%	38%	64%	36%	70%	30%
Juvenile ARY/CHINS/Other	58%	42%	46%	54%	45%	55%	54%	46%	53%	47%
Juvenile Truancy	47%	53%	53%	47%	47%	53%	48%	52%	51%	49%
Juvenile Offender	100%	---	100%	---	100%	---	100%	---	100%	---
Criminal RALJ	94%	6%	89%	11%	90%	10%	88%	12%	91%	9%
Civil RALJ	81%	19%	61%	39%	71%	29%	89%	11%	62%	38%

Reflecting all documents received by 07/15/201887%

Table 7. Quarterly Utilization of Pro Tem Judges/Commissioners ⁽¹⁾

Category	Q1/16	Q2/16	Q3/16	Q4/16	Q1/17	Q2/17	Q3/17	Q4/17	Q1/18	Q2/18*
Grand Total	769	1157	859	1732	924	1567	1657	2131	1149	2132
Judge FTE Equivalent ⁽³⁾	1.7	2.6	1.9	3.8	2.1	3.5	3.7	4.7	2.6	4.7
By Work Type										
Pro Tem Judge	99	191	134	436	166	322	456	307	139	357
Pro Tem Commissioner	679	966	725	1256	759	1245	1201	1824	1010	1775
Unspecified	0	0	0	41	0	0	0	0	0	0
By Location										
KCCCH	420	394	346	840	344	604	864	953	498	822
MRJC	193	239	214	389	262	463	234	403	164	659
Juvenile	123	405	201	367	208	411	429	553	420	511
ITA	33	119	98	137	111	89	131	222	67	141
Other	0	0	0	0	7	0	0	0	0	0
By Calendar Type										
Criminal	70	50	55	130	36	68	120	74	15	63
Civil	3	0	0	0	0	0	0	0	0	0
Ex Parte	64	134	95	111	56	305	315	433	141	630
Family Law/Domestic	470	421	397	743	415	615	429	693	414	606
Dependency	81	251	120	250	150	236	320	367	174	327
Juvenile Offender	27	125	69	108	31	145	104	123	32	123
BECCA	16	29	13	10	26	30	6	63	214	61
ITA	33	119	98	137	111	89	131	222	67	141
Juvenile Drug Court	0	0	0	0	0	0	0	0	0	0
Family Treatment Court	0	0	0	0	0	0	0	0	0	0
Plea Calendar	0	4	11	157	79	67	167	122	80	145
Status/Non-Compliance	7	16	2	5	0	0	2	9	0	11
Other or Unspecified	0	9	0	82	20	12	65	26	13	26
By Reason										
Vacation Backfill	397	582	499	783	365	628	883	1065	448	738
Medical Backfill	211	213	223	302	159	184	171	281	138	197
Duty Time	134	189	89	166	208	437	204	200	280	470
Conference Coverage	0	134	24	0	0	0	21	59	14	37
Congestion	23	29	14	235	99	318	380	527	149	264
Vacancy Coverage	4	0	0	185	84	0	0	0	0	426
Other	0	11	10	61	10	0	0	0	120	1

(1) This table is based on the time sheet for compensation

(2) Judge FTE Equivalent = # of hours / [7.5 hours/day * 20 days/month * 3 months] = # of hours/450.

Data for the most current quarter are incomplete at reporting time and will be updated in next quarterly report.

The statistics on Pro Tem judge/commissioner use provide information on the external help the court has obtained in order to handle the workload. The data are collected on the time sheet for compensation (therefore it does not include unpaid volunteering or visiting judges/commissioners). The database on Pro Tem judges/commissioners is managed by the Administrative Services Department (ASD) of King County Superior Court. The Pro Tem total hours presented in this section are provided quarterly by ASD.

Table 8. Family Law Activity

	4TH QTR, 2016		1ST QTR, 2017		2ND QTR, 2017		3RD QTR, 2017		4TH QTR, 2017		1ST QTR, 2018		2ND QTR, 2018	
	HRGS	ORDS	HRGS	ORDS	HRGS	ORDS	HRGS	ORDS	HRGS	ORDS	HRGS	ORDS	HRGS	ORDS
SEATTLE														
FAM.LAW	430	1506	447	1553	435	1483	440	1521	461	1539	443	1546	413	1592
DAILY AVG.	7	25	7	25	7	24	7	25	8	25	7	25	7	26
PATERNITY	94	752	71	792	48	665	52	720	47	557	68	740	50	648
DAILY AVG.	2	12	1	13	1	11	1	12	1	9	1	12	1	11
DOM. VIOL.	239	653	229	576	224	627	264	736	229	618	209	594	212	674
DAILY AVG.	4	11	4	9	4	10	4	12	4	10	3	10	3	11
	4TH QTR, 2016		1ST QTR, 2017		2ND QTR, 2017		3RD QTR, 2017		4TH QTR, 2017		1ST QTR, 2018		2ND QTR, 2018	
	HRGS	HRGS	HRGS	ORDS	HRGS	ORDS	HRGS	ORDS	HRGS	ORDS	HRGS	ORDS	HRGS	ORDS
KENT														
FAM.LAW	361	1133	299	1209	334	1213	365	1249	339	1067	306	1069	352	1160
DAILY AVG.	6	19	5	20	5	20	6	20	6	17	5	18	6	19
PATERNITY	63	515	61	699	57	685	58	591	50	480	59	632	53	600
DAILY AVG.	1	8	1	11	1	11	1	10	1	8	1	10	1	10
DOM. VIOL.	302	807	275	699	328	818	290	816	330	813	331	803	304	749
DAILY AVG.	5	13	5	11	5	13	5	13	5	13	5	13	5	12
SEA/KNT	4TH QTR, 2016		1ST QTR, 2017		2ND QTR, 2017		3RD QTR, 2017		4TH QTR, 2017		1ST QTR, 2018		2ND QTR, 2018	
	HRGS	ORDS	HRGS	ORDS	HRGS	ORDS	HRGS	ORDS	HRGS	ORDS	HRGS	ORDS	HRGS	ORDS
TOTAL	1489	5366	1382	5528	1426	5491	1469	5633	1456	5074	1416	5384	1384	5423
DAILY AVG.	24	88	23	91	23	90	24	92	24	83	23	88	23	89

The statistics on family law and Ex Parte activity are obtained directly from SCOMIS using the appropriate docket codes.

Table 9. Ex Parte Activity

	2ND QTR, 2017		3RD QTR, 2017		4TH QTR, 2017		1ST QTR, 2018		2ND QTR, 2018	
	HRGS	ORDS	HRGS	ORDS	HRGS	ORDS	HRGS	ORDS	HRGS	ORDS
SEATTLE										
ADOP/PAT	99	303	61	266	87	367	50	248	68	297
DOM. VIOL.	4	356	12	351	5	311	11	317	18	371
OTH. CIVIL	316	604	274	604	292	603	258	560	261	533
DOMESTIC	399	1784	313	1643	375	1861	342	1721	411	1823
PROB/GDN	711	2301	691	1856	654	1758	656	1849	678	1913
SUBTOTAL	1529	5348	1351	4720	1413	4900	1317	4695	1436	4937
DAILY AVG.	25	88	22	77	23	80	22	77	24	81
SEATTLE MAIL-IN										
ADOP/PAT	----	0	----	0	----	1	----	30	----	1
DOM. VIOL.	----	0	----	0	----	0	----	0	----	0
OTH. CIVIL	----	124	----	84	----	96	----	103	----	65
DOMESTIC	----	17	----	15	----	9	----	12	----	19
PROB/GDN	----	72	----	59	----	68	----	88	----	54
SUBTOTAL	----	213	----	158	----	174	----	233	----	139
DAILY AVG.	----	3	----	3	----	3	----	4	----	2
KENT										
ADOP/PAT	45	147	42	120	38	121	30	131	23	88
DOM. VIOL.	6	528	3	561	2	502	8	508	4	546
OTH. CIVIL	310	499	290	610	145	587	122	505	122	511
DOMESTIC	388	1372	397	1287	343	1274	377	1393	449	1485
PROB/GDN	453	690	409	601	238	582	244	524	236	578
SUBTOTAL	1202	3236	1141	3179	766	3066	781	3061	834	3208
DAILY AVG.	20	53	19	52	13	50	13	50	14	53
KENT MAIL-IN										
ADOP/PAT	----	1	----	0	----	0	----	0	----	1
DOM. VIOL.	----	0	----	0	----	0	----	1	----	0
OTH. CIVIL	----	24	----	2	----	14	----	5	----	5
DOMESTIC	----	3	----	2	----	4	----	7	----	7
PROB/GDN	----	27	----	23	----	22	----	33	----	33
SUBTOTAL	----	55	----	27	----	40	----	46	----	46
DAILY AVG.	----	1	----	0	----	1	----	1	----	1
ALL SEA AND KENT										
TOTAL	2731	8853	2492	8085	2179	8181	2098	8036	2270	8331
AVERAGE	45	145	41	133	36	134	34	132	37	137

Note: Statistical report on Ex Parte via Clerk commenced in January 2009 and discontinued in 2016 when technology in E-filing allows orders being electronically signed by judicial officers without a department designation.

Appendix Glossary and Definition

General Definition

Active Status

A case is active if it is not on suspense status (see Suspense Status).

Case

A case is defined as a filing with an assigned case number (or a case number plus a defendant connection code in pre-1990 criminal filings).

Completion

A case is completed when dispositive document is filed with the court following resolution.

Jury Trial

A hearing is reported as a jury trial if the jury is impaneled.

New Case

A new case is an original filing with new case number assigned.

Non-Jury Trial

A hearing is reported as a non-jury trial if an opening statement is made, waived, or reserved. A juvenile fact finding hearings is reported as a non-jury trial.

Pending Case

A case is defined as pending if it is unresolved and active (not in suspense).

Reactivated Case

A case returns to active status from suspense status during the reporting period.

Re-opened Cases

A case is re-opened if it has been previously completed but returns to the court for supplement or change of the original case resolution. A re-opened case does not have a new case number. Only resolved cases can be "re-opened". (Note: measurement not available as of July 1996. SCOMIS capacity may exist after conversion to DB2 in the future).

Resolution

A case is resolved if all issues in the complaint are fully adjudicated.

Suspended Case

A case is placed in suspense status from active status during the reporting period.

Suspense Status

A case is on suspense status if it is on warrant, appeal, stay, mediation, arbitration ("Deferred Prosecution" is not a suspense status, but is treated as a resolution).

Trial

A hearing set before a judge or jury in which all the issues in the case are meant to be resolved. A trial normally includes opening statements to the court or jury stating what the evidence will show, introduction of witnesses and exhibits for direct and cross examination, final arguments to the court or jury in which counsel argue both the evidence and the law, and judgment by the court or jury stating what the facts of the case are and what law applies to the facts. In a jury case, it also includes the selection of the jury. A trial can be held

for one or more cases. A single trial may be held to adjudicate more than one case (as defined above).

Post-resolution Modifications

In this report, we also report the post-resolution modifications for case type 3 (domestic) and 5 (paternity). These numbers are based on the tracks (DMOD and DTBA) opened after the original resolution date (i.e., if the track beginning date is after the resolution date).

Section I. Filing Activity

Additional Filings with Clerk

Filings with clerk without assigning a SCOMIS case number. This reporting category consists of search warrants, wire taps, extradition, oaths and orders pertaining to Pro Tem judge/commissioners/Court

Reporters/Bailiffs, and other "non-case" filings as recorded under 12050 system.

Annual Filings

Total number of new case filings during the calendar year (January 1 to December 31).

Adoption Cases

This reporting category includes the following "cause-of-action" codes within SCOMIS case type 5:

- Relinquishment (REL)
- Termination of Parent/Child Relationship (TER)
- Adoption (ADP)
- Miscellaneous (MSC)
- Name Change - Confidential (CHN)
- Initial Pre-Placement Report Filed with Clerk (PPR)

General Civil Cases

"General Civil" cases include all civil matters other than Domestic, Probate, Guardianship, Adoption, Paternity and appeals from courts of limited jurisdiction and "Matters Filed with Clerk". "General civil" cases include small claims as identified by the "Small Claim Track". This reporting category includes the following "cause-of-action" codes within SCOMIS case type 2:

- Administrative Law Review (ALR)
- Change of Name - Non-Confidential (CHN)
- Collection (COL)
- Commercial (COM)
- Condemnation (CON)
- Domestic Violence Protection (DVP)
- Emancipation of Minor (EOM)
- Foreclosure (FOR)
- Civil Harassment (HAR)
- Injunction (INJ)
- Other Malpractice (MAL)
- Medical Malpractice (MED)
- Meretricious Relationship (MER)
- Malicious Harassment (MHA)
- Miscellaneous (MSC)
- Minor Settlement (MST) - as of 10/1/96, under Guardianship
- Petition of Civil Commitment- Sexual Predator (PCC)
- Property Fairness (PFA)
- Personal Injury (PIN)

- Property Damage (PRP)
- Quiet Title (QTI)
- Small Claims (LCA/LCI on “Small Claim Track”)
- Seizure of Property from the Commission of a Crime (SPC)
- Seizure of Property Resulting from a Crime (SPR)
- Tort Motor Vehicle (TMV)
- Tort Other (TTO)
- Unlawful Detainer (UND)
- Wrongful Death (WDE)
- Writ of Habeas Corpus (WHC)
- Miscellaneous Writ (WMW)
- Writ of Mandamus (WRM)
- Writ of Restitution (WRR)
- Writ of Review (WRV)

Civil RALJ Cases

Civil appeals from courts of limited jurisdiction (excluding small claims as identified by the “Small Claim Track”). Civil RALJ includes the following “cause-of-action” reporting categories:

- Lower Court Appeal - Civil and “Not a Small Claim”
- Lower Court Appeal - Infraction and “Not a Small Claim”

Note: The Civil RALJ cases are determined based on both SCOMIS “cause-of-action” code (LCA and LCI) within SCOMIS case type 2 and the “Small Claim Track”.

Criminal Cases (excl. RALJ)

Adult criminal cases, excluding appeals from courts of limited jurisdiction. This reporting category includes the following crime categories within SCOMIS case type 1:

- Homicide
- Sex Crime
- Robbery
- Assault
- Theft/Burglary
- Motor Vehicle Theft
- Controlled Substance
- Other Felony
- Others (Misdemeanor, Non-charge Case)

Criminal RALJ Cases

Criminal appeals from courts of limited jurisdiction. This reporting category includes all SCOMIS case type 1 cases that have an appeal from lower court field of “Yes”.

Domestic Cases

This reporting category includes the following “cause-of-action” codes within SCOMIS case type 3:

- Annulment – Invalidity (INV)
- Child Custody (CUS)
- Dissolution With Children Of The Marriage (DIC)
- Dissolution With No Children Of The Marriage (DIN)
- Dissolution of Domestic Partnership – With Children (DPC)
- Dissolution of Domestic Partnership – With No Children (DPN)
- Foreign Judgment (FJU)
- Invalidity – Domestic Partnership (INP)
- Mandatory Wage Assignment (MWA)
- Miscellaneous (MSC)
- Modification (MOD)
- Modification – Support Only (MDS)
- Out-Of-State Child Custody (OSC)
- Parenting Plan / Child Support (PPS)
- Reciprocal, Respondent In-County (RIC)
- Reciprocal, Respondent Out-of-County (ROC)
- Legal Separation (SEP)
- Legal Separation – Domestic Partnership (SPD)

Guardianship Cases

This reporting category includes the following “cause-of-action” codes within SCOMIS case type 4:

- Guardianship/Estate (G/E)
- Guardianship (GND)
- Limited Guardianship (LGD)
- Minor Settlement (MST)

Juvenile ARY/CHINS Cases

Juvenile dependency cases, excluding truancy cases and DEP cause code. This reporting category includes following “cause-of-action” codes within SCOMIS case type 7:

- Alternative Residential Placement (ARP)
- At-Risk Youth (ARY)
- Child in Need of Service (CNS)

Juvenile Dependency Cases

This reporting category includes following “cause-of-action” codes within SCOMIS case type 7:

- Dependency (DEP)
- Termination (TER)
- Developmental Disability (DDP)
- Guardianship Foster Children (GFC)
- Reinstatement of Parental Rights (RPR)
- Extension of Foster Care (EFC)
- Relative Visitation (RVS)

Juvenile Offender Cases

This reporting category includes the following crime categories in SCOMIS case type 8:

- Homicide
- Sex Crime
- Robbery
- Assault
- Theft/Burglary
- Motor Vehicle Theft
- Controlled Substance
- Other Felony
- Others (Misdemeanor, Non-charge Case)

Juvenile Truancy Cases

Mandatory truancy filings started on 10/01/1995. This reporting category includes the following “cause-of-action” code within SCOMIS case type 7:

- Truancy (TRU)

Matters Filed with Clerk

Filings with clerk (case numbers assigned), but requiring little or no judicial action. This reporting category includes the following “cause-of-action” codes within SCOMIS case type 2:

- Abstract of Judgment (ABJ)
- Foreign Judgment (FJU)
- Tax Warrant (TAX)
- Transcripts of Judgment (TRJ)

ITA (civil commitment) Cases

This reporting category includes all “cause-of-action” codes within SCOMIS case type 6:

- Alcoholic Treatment (ALT)
- Mental Illness - Adult (MI)
- Mental Illness - Juvenile (MIJ)
- Mental Illness - Family (MIF)

Paternity Cases

This reporting category includes the following “cause-of-action” codes within SCOMIS case type 5:

- Modification (MOD)
- Paternity (PAT)
- Paternity/URES/UFSA (PUR)

Probate Cases

This reporting category includes the following “cause-of-action” codes within SCOMIS case type 4:

- Absentee (ABS)
- Disclaimer (DSC)
- Estate (EST)
- Foreign Will (FNW)
- Miscellaneous (MSC)
- Non-Probate Notice to Creditors (NNC)
- Will Only (WLL)

Total Cases

New cases with case numbers assigned, excluding “Matters Filed with Clerk” and “Additional Filings with Clerk”.

Year-to-Date Filings

Total number of new filings since the beginning of calendar year (January 1) to the end of reporting period.

Section II. Resolution Category

Adoption - Resolved by Trial

Court Decision after Non-Jury Trial (CDAT)

Adoption - Uncontested

Consolidated Case (CONS)
Uncontested Resolution (UNDS)

Adoption - Settlement/Dismissal

Closed by Court Order after a Hearing (CLCO)
Dismissal without Trial (DSM)
Dismissal after Non-Jury Trial Commencement (DAT)
Settled after Non-Jury Trial Commencement (SAT)
Settled by Parties/Agreed Judgment (STPR)

Adoption - Closure by Clerk

Dismissal/Closure by Clerk (DSCK)

Adoption - Others

Change of Venue/Jurisdiction (CHV)
Other Non-specified Resolutions

Civil - Resolved by Jury Trial

Jury Verdict after Trial (JVAT)

Civil - Resolved by Non-Jury Trial

Court Decision after Non-Jury Trial (CDAT)

Civil - Summary Judgment

Summary Judgment (SMJG)

Civil - Default/Uncontested

Consolidated Case (CONS)
Default Judgment (DFJG)
Uncontested Resolution (UNDS)

Civil - Arbitration

Settle by Arbitration (ARBA)

Civil - Settlement/Dismissal

Closed by Court Order after a Hearing (CLCO)
Dismissal after Non-Jury Trial (DAT)
Dismissal after Jury Trial (DJT)
Dismissal (DSM)
Settled after Non-Jury Trial Commencement (SAT)
Settled after Jury Trial Commencement (SJT)
Settled by Parties/Agreed Judgment (STPR)

Civil - Closure by Clerk

Dismissal/Closure by Clerk (DSCK)

Civil - Others

Transferred to Federal bankruptcy Court (BANK)
Change of Venue/Jurisdiction (CHV)
Other Non-specified Resolutions

Civil RALJ - RALJ Decision

Court Decision to Affirm Appeal/review (CDTA)
Court Decision to Modify Appeal/Review (CDTM)
Court Decision to Reverse Appeal/review (CDTR)

Civil RALJ - Dismissal

Dismissal and Remand of Appeal/Review (DSRM)

Civil RALJ - Others

Other Non-specified Resolutions

Comparison with Court Standard

Percentage of cases actually falling within the Court’s standard benchmark.

Court Standard

Benchmarks set by a state advisory committee and adopted by the court indicating percentage of cases to be resolved at certain age (in months, 1 month = 30 days as used in the Advisory Case Processing Time Standard as published in the Court Rule).

Court standard is based on timelines as suggested by State Advisory Committee. For a case type with no time standard, the standard for a similar case type is adopted if appropriate.

Criminal: 90% by 4 months, 98% by 6 months, 100% by 9 months.

Civil: 90% by 12 months, 98% by 18 months, 100% by 24 months.

Domestic: 90% by 8 months, 98% by 10 months, 100% by 14 months.

Probate/Guardianship: 90% by 8 months, 98% by 18 months, 100% by 36 months.

Adoption/Paternity: 90% by 8 months, 98% by 10 months, 100% by 14 months.

Mental Illness/Juvenile Truancy: No standard yet.

Juvenile Dependency: 90% by 8 months, 98% by 10 months, 100% by 14 months.

Juvenile Offender: 90% by 4 months, 98% by 6 months, 100% by 9 months.

Criminal RALJ/Civil RALJ: 90% by 4 months, 98% by 5 months, 100% by 6 months.

Criminal - Resolved by Jury Trial

Acquittal by Jury (AQJV)
Convicted - Jury Verdict after Trial (CVJV)

Criminal - Resolved by Non-Jury Trial

Acquittal by Court (AQCT)
Convicted - Court Decision after Non-Jury Trial (CVCT)

Criminal - Resolved by Guilty Plea

Guilty Plea (GP)
Guilty Plea after Non-Jury Trial Commencement (GPAT)
Guilty Plea after Jury Trial Commencement (GPJT)

Criminal - Dismissal

Dismissal after Non-Jury Trial Commencement (DAT)
Dismissal after Jury Trial Commencement (DJT)
Dismissal (DSM)

Criminal - Others

Change of Venue (CHV)
Consolidated Case (CONS)
Continued Order of Prosecution with Completion (CTOP)*
Deferred Prosecution (DFPD)
Dismissal/Closure by Clerk (DSCK)
Governor’s warrant (GW)
Not Guilty by Reason of Insanity (NGRI)
Uncontested Resolution (UNDS)
Waiver of Extradition (WE)
Other Non-specified Resolutions

* Note: For adult criminal cases, “CTOP” does not necessarily constitute resolution. An adult criminal case with a “CTOP” as resolution code is counted as a resolved case only if a completion code exists along with the “CTOP”. If the resolution code is CTOP and there is no completion code, then the case is treated as unresolved. The primary reason for combining “CTOP” with a completion code is to determine resolution for drug court cases (CTOP is entered in the SCOMIS resolution field as soon as a defendant enrolls in

Drug Court). This rule on “CTOP” applies to adult criminal cases only.

Criminal RALJ - RALJ Decision

Court Decision to Affirm Appeal/review (CDTA)
Court Decision to Modify Appeal/Review (CDTM)
Court Decision to Reverse Appeal/review (CDTR)

Criminal RALJ - Dismissal

Dismissal and Remand of Appeal/Review (DSRM)

Criminal RALJ - Others

Other Non-specified Resolutions

Domestic - Resolved by Trial

Court Decision after Non-Jury Trial (CDAT)

Domestic - Default/Uncontested

Consolidated Case (CONS)
Default Judgment (DFJG)
Uncontested Resolution (UNDS)

Domestic - Settlement/Dismissal

Settled by Arbitration (ARBA)
Closed by Court Order after a Hearing (CLCO)
Dismissal after Non-Jury Trial Commencement (DAT)
Dismissal (DSM)
Settled after Non-Jury Trial Commencement (SAT)
Settled by Parties/Agreed Judgment (STPR)

Domestic - Closure by Clerk

Dismissal/Closure by Clerk (DSCK)

Domestic - Others

Change of Venue/Jurisdiction (CHV)
Summary Judgment (SMJG)
Other Non-specified Resolutions

Guardianship - Guardian Appointed

Guardian Appointed (PRGA)

Guardianship - Dismissal

Closed by Court Order after a Hearing (CLCO)
Dismissal (DSM)

Guardianship - Closure by Clerk

Dismissal/Closure by Clerk (DSCK)

Guardianship - Others

Change of Venue/Jurisdiction (CHV)
Consolidated Case (CONS)
Uncontested Resolution (UNDS)
Other Non-specified Resolutions

Juvenile Dependency - Finding of Dependency

Approved Petition (APP)

Juvenile Dependency - Dismissal

Dismissal (DSM)

Juvenile Dependency - Others

Change of Venue/Jurisdiction (CHV)
Consolidated Case (CONS)
Transfer of Jurisdiction (TRJU)
Other Non-specified Resolutions

Juvenile Offender - Resolved by Trial

Acquittal by Court (AQCT)
Convicted - Court Decision after Adjudicatory Hearing (CVCT)

Juvenile Offender - Resolved by Guilty Plea

Guilty Plea before Adjudicatory Hearing Commencement (GP)
Guilty Plea after Adjudicatory Hearing Commencement (GPAT)

Juvenile Offender - Dismissal

Dismissal after Adjudicatory Hearing Commencement (DAT)

Dismissal (DSM)

Juvenile Offender - Others

Change of venue (CHV)
Dismissal/Closure by Clerk (DSCK)
Consolidated Case (CONS)

Continued Prosecution (CTOP)

Decline of Jurisdiction (DECL)

Uncontested Resolution (UNDS)

Other Non-specified Resolutions

Juvenile Truancy - Finding of Truancy

Approved Petition (APP)

Juvenile Truancy - Dismissal

Dismissal (DSM)

Juvenile Truancy - Others

Change of Venue (CHV)
Consolidated Case (CONS)
Transfer of Jurisdiction (TRJU)
Other Non-specified Resolutions

ITA - Court Decision to Commit

Court Decision to Commit (CDTC)

ITA - Closed by Court

Closed by Court (CLCO)

ITA - Dismissal

Dismissal (DSM)

ITA - Others

Change of Venue/Jurisdiction (CHV)
Uncontested Resolution (UNDS)
Other Non-specified Resolutions

Paternity - Resolved by Trial

Court Decision after Non-Jury Trial (CDAT)

Paternity - Summary Judgment

Summary Judgment (SMJG)

Paternity - Default/Uncontested

Consolidated Case (CONS)
Default Judgment (DFJG)
Uncontested Resolution (UNDS)

Paternity - Settlement/Dismissal

Settled by Arbitration (ARBA)
Closed by Court Order after a Hearing (CLCO)
Dismissal after Non-Jury Trial Commencement (DAT)
Dismissal (DSM)
Settled after Non-Jury Trial Commencement (SAT)
Settled by Partied/Agreed Judgment (STPR)

Paternity - Closure by Clerk

Dismissal/Closure by Clerk (DSCK)

Paternity - Others

Change of Venue (CHV)
Other Non-specified Resolutions

Percentile

Percent of cases resolved at a given age. For example, if resolved cases had a 98 percentile of 12 months, it means that 98% of the cases were resolved within the age of 12 months, or conversely 2% of the cases were resolved after 12 months, not counting suspense time.

Probate - Personal Representative Appointed

Non-Intervention Probate (NIP)
Personal Representative Appointed (PRGA)

Probate - Dismissal

Closed by Court Order after a Hearing (CLCO)
Dismissal (DSM)

Probate - Closure by Clerk

Dismissal/Closure by Clerk (DSCK)

Probate - Others

Change of Venue (CHV)
Consolidated Case (CONS)
Uncontested Resolution (UNDS)
Other Non-specified Resolutions

Backlogged Cases

Active pending cases with an age exceeding the court-adopted time standard for each specific case type (recommended by the State Advisory Committee, see definition for *Court Standard*).

Section III. Pending Caseload

Adjustment

Adjustment made because of vacating of resolutions, or change in suspense status between two reporting period.

End Pending

Total number of pending cases at the end of reporting period.

Previous Pending

Total number of pending cases at the beginning of reporting period.

Resolution Rate

Resolution rate is defined as the ratio of number of resolutions to number of new filings (i.e., number of resolutions divided by number of new filings) during the reporting period. The resolution rate measures the relative pace of resolution in relation to the pace of new filings. A resolution rate of greater than 1 indicates the number of resolutions exceeds the number of new filings.

On-review Status

Cases that have been resolved (post-resolution) but still need court resources for periodic review and other remaining outstanding issues.

Probate (EST), Paternity (PAT) and Dependency (DEP): Resolved and not completed (paternity or dependency established, but outstanding issues remain).

Guardianship (GDN, LGD, G/E): Resolved and on tracks of G1, G2, G3, GE or GD; Minor Settlement (MST): Resolved with a future hearing date.

Section IV. Age of Pending Cases

Case Age

The age of a case is the time (number of days) since the filing date, less any suspense time if applicable.

Median Age

The median age is the time that 50% of the cases are under and 50% are above the given age. For example, if pending cases have a median age of 12 months, it means that 50% of the pending cases are within the age of 12 months, and 50% of pending cases are over 12 months. The median age is more robust to cases with extreme age values than the average age.

Suspense Time

Time (days) that a case is on suspense status before its resolution. If a case has more than one suspense between filing and resolution, the suspense time is the total from all suspense. Time on suspense status after resolution (e.g., appeals) is not counted.