



# King County

Department of Judicial Administration

*Barbara Miner*

*Director and Superior Court Clerk*

(206) 296-9300 (206) 296-0100 TTY/TDD

King County Superior Court

## Quarterly Statistical Report

Second Quarter 2020

Department of Judicial Administration

Prepared by: Shiquan Liao, Ph.D., Statistician

*July 20, 2020*

**Report #: QTR-2020-02**

*Seattle:*  
516 Third Avenue Room E609  
Seattle, WA 98104-2386

*Regional Justice Center:*  
401 Fourth Avenue North Room 2C  
Kent, WA 98032-4429

*Juvenile Division:*  
1211 East Alder Room 3015  
Seattle, WA 98122-5598

# Quarterly Report Summary

King County Superior Court, Second Quarter 2020

**NOTE: Washington State Supreme Court orders related to the coronavirus pandemic, beginning March 2020, affect the statistics for the foreseeable future.**

## Highlights

- **Criminal Cases** -- The criminal filings in the first two quarters of 2020 were lower than that in 2019, with a 5.4% decrease. The criminal filings (excluding RALJ) in the first two quarters of 2020 were 2,777 cases. MRJC accounted for 39% of the total criminal filings in the court. The resolutions of criminal cases in the first two quarters of 2020 were 2,001 cases, significantly lower than the filing volume in the same time period. The pending criminal caseload at the end of the second quarter of 2020 was 5,113 cases (excluding RALJ). Of the 5,113 pending criminal cases, 38% were the MRJC cases. **The increase in pending criminal caseload is primarily due to the COVID-19 pandemic causing the court to suspend trials, to issue many fewer bench warrants and to postpone jury trials, thus keeping these cases in pending active status.**
- **Civil Cases**. Filings in general civil cases (case type 2) in the first two quarters of 2020 were significantly lower than that in 2019 (-26.8%) because of COV-19. The civil resolutions were low in the same time period. The pending civil caseload were 7,900 cases at the end of the second quarter of 2020. MRJC had 35% of the civil pending caseload at the end of the second quarter of 2020.
- **Domestic Cases**. For domestic cases (case type 3), the filings in the first two quarters of 2020 were also significantly lower than that in 2019 (-19.6%). The resolutions of domestic cases lagged slightly behind the filing volume in the same time period. The pending domestic caseload was 4,511 cases at the end of the second quarter of 2020, with 41% being the MRJC cases.
- **ITA Cases**. The filings of ITA cases in the first two quarters of 2020 were essentially same as that in 2019 (-1.0%), totaling 2,422 cases. The filing of ITA cases showed a flatter pattern after sharp increases in previous years. The pending ITA caseload at the end of the second quarter of 2020 was 433 cases, a high volume.
- **Juvenile Dependency/Termination (DEP/TER) and At-risk Youth (ARY)/Child-in-Need of Service (CHINS) Cases**. In the first two quarters of 2020, the filing volume in juvenile related cases showed a decreasing pattern when compared to the same time period in 2019 in most categories, dependency filings down 33.2% (-33.2%), truancy down 61.5% (-61.5%), ARY/CHINS/Other down 31.4% (-31.4%), while termination up by 11.5% . At the end of the second quarter of 2020, there were 692 dependency cases, 332 termination cases, and 128 ARY/CHINS/Other cases pending resolution.
- **Juvenile Offender Cases**. The juvenile offender filings in the first two quarters of 2020 were 484 cases, a 20.5% decrease from 2019 (-20.5%). The resolution pace for juvenile offender was behind the filing pace in the same time period. At the end of the second quarter of 2020, there were 758 juvenile offender pending cases.
- **Pro Tem Use**. In the first two quarters of 2020, the daily Pro Tem use by the court was 2.5 and 0.8 FTEs, a low volume.
- **Post-resolution Modifications (Table 1-A)**. In the first two quarters of 2020, there were 287 modifications (both parenting plan and relocation modifications).

Table 1. Year-to-Date Filing Activity

King County Superior Court

Reporting Category	Year-to-Date (Jan – Jun) and Annual Filing Activity <sup>(1)</sup>					2019-2020 change (+ means “increase”)		% of 2020 Total Filing <sup>(2)</sup>
	2016	2017	2018	2019	2020	Cases	Percentage	
<b>Total (incl. RALJ)</b>								
Year-to-Date Filing	26371	27007	27766	26886	21417	-5469	-20.3%	
Annual Filing	51472	53115	53835	52889				
<b>Criminal (excl. RALJ)</b>								
Year-to-Date Filing	3241	3310	3017	2937	2777	-160	-5.4%	13.0%
Annual Filing	6632	6441	5989	6607				
<b>Civil (excl. RALJ)</b>								
Year-to-Date Filing	10729	10697	11191	10842	7940	-2902	-26.8%	37.1%
Annual Filing	21222	21517	22217	21202				
<b>Domestic</b>								
Year-to-Date Filing	3839	3896	3888	3560	2861	-699	-19.6%	13.4%
Annual Filing	7512	7597	7640	7280				
<b>Probate</b>								
Year-to-Date Filing	3186	3428	3380	3582	3235	-347	-9.7%	15.1%
Annual Filing	6073	6418	6382	6804				
<b>Guardianship</b>								
Year-to-Date Filing	508	477	515	370	355	-15	-4.1%	1.7%
Annual Filing	1008	949	977	706				
<b>Adoption</b>								
Year-to-Date Filing	246	265	220	236	193	-43	-18.2%	1.0%
Annual Filing	458	546	445	483				
<b>Paternity</b>								
Year-to-Date Filing	272	282	269	265	154	-111	-41.9%	0.7%
Annual Filing	528	539	512	526				
<b>ITA – Civil Commitment</b>								
Year-to-Date Filing	2076	2317	2407	2446	2422	-24	-1.0%	11.3%
Annual Filing	4152	4694	4910	4985				
<b>Juvenile Dependency (DEP)</b>								
Year-to-Date Filing	398	412	411	426	245	-181	-42.5%	1.1%
Annual Filing	727	793	787	811				
<b>Juvenile Termination (TER)</b>								
Year-to-Date Filing	132	153	177	113	126	+13	+11.5%	0.6%
Annual Filing	219	304	344	225				
<b>Juvenile ARY/CHINS/OTHERS</b>								
Year-to-Date Filing	127	111	143	105	72	-33	-31.4%	0.3%
Annual Filing	247	245	293	206				
<b>Juvenile Truancy</b>								
Year-to-Date Filing	879	904	1418	1281	493	-788	-61.5%	2.3%
Annual Filing	1222	1547	1925	1706				
<b>Juvenile Offender</b>								
Year-to-Date Filing	644	646	645	609	484	-125	-20.5%	2.3%
Annual Filing	1295	1324	1229	1121				
<b>Criminal RALJ</b>								
Year-to-Date Filing	64	76	55	69	40	-29	-42.0%	0.2%
Annual Filing	111	136	117	146				
<b>Civil RALJ</b>								
Year-to-Date Filing	30	33	30	34	20	-14	-41.2%	0.1%
Annual Filing	66	65	68	81				
<b>Matters Filed with Clerk <sup>(3)</sup></b>								
Year-to-Date Filing	4462	6073	4627	4773	2292	-2481	-52.0%	
Annual Filing	8742	10903	9036	10030				

(1) New filings only (based on filing date).

(2) New filings of each reporting category as percentage of “Year-to-Date Filing”.

(3) “Matters Filed with Clerk” are not included in the “Total”.

Chart 1-A. Quarterly Filing Activity  
Total Judicial Cases Only ("Matters Filed with Clerk" excluded)

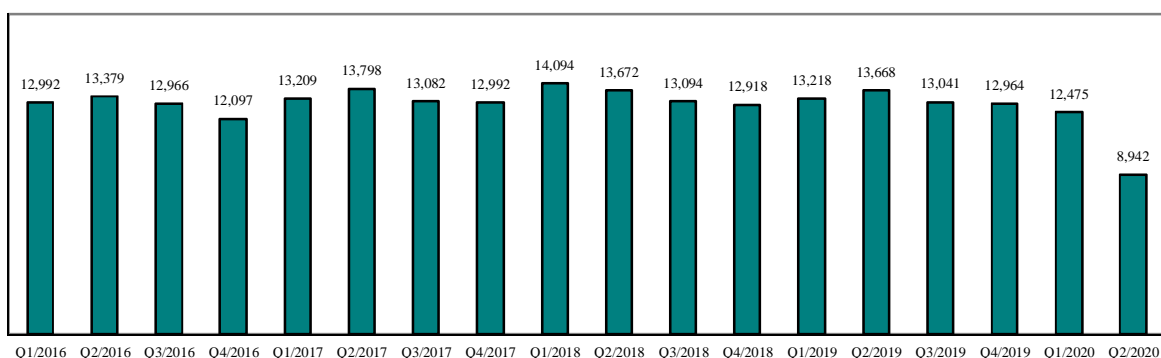
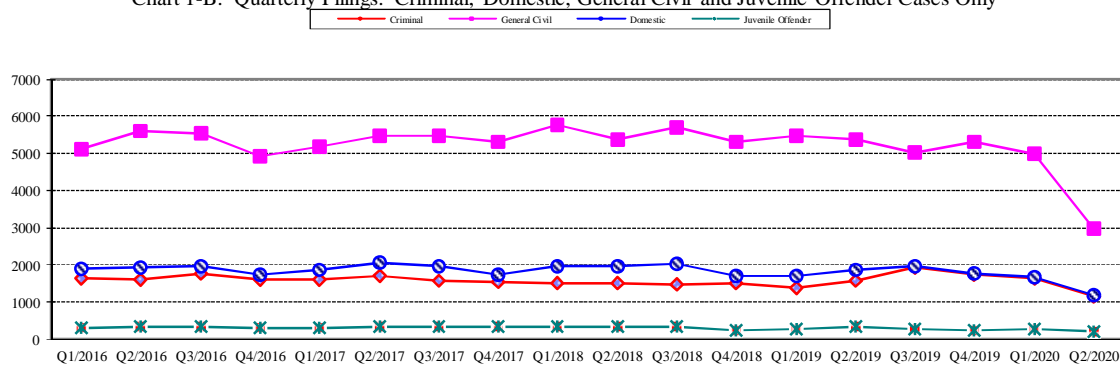


Chart 1-B. Quarterly Filings: Criminal, Domestic, General Civil and Juvenile Offender Cases Only



\* Note: "General Civil" is specifically defined in this report. The category of "General Civil" does **not** include the following case types: domestic, probate, guardianship, adoption, paternity, ITA (civil commitment), juvenile cases (dependency, at-risk youth, child-in-need of service, civil RALJ, and tax filings that don't require judicial resources ("matters filed with clerk")). Please check the Appendix for the cause codes in the "General Civil" category.

Table 1-A. Post-Resolution Modifications (Domestic and Paternity Cases)

		2018Q1			2018Q2			2018Q3			2018Q4			Year 2018		
Location	Case Type	DMOD	DTBA	Total	DMOD	DTBA	Total	DMOD	DTBA	Total	DMOD	DTBA	Total	DMOD	DTBA	Total
KNT	Domestic	207	25	232	193	50	243	168	33	201	134	22	156	702	130	832
	Paternity	15	3	18	11	6	17	16	3	19	8	1	9	50	13	63
<b>KNT Total</b>		<b>222</b>	<b>28</b>	<b>250</b>	<b>204</b>	<b>56</b>	<b>260</b>	<b>184</b>	<b>36</b>	<b>220</b>	<b>142</b>	<b>23</b>	<b>165</b>	<b>752</b>	<b>143</b>	<b>895</b>
SEA	Domestic	172	51	223	182	82	264	130	43	173	120	45	165	604	221	825
	Paternity	11	2	13	5	4	9	9	3	12	10	2	12	35	11	46
<b>SEA Total</b>		<b>183</b>	<b>53</b>	<b>236</b>	<b>187</b>	<b>86</b>	<b>273</b>	<b>139</b>	<b>46</b>	<b>185</b>	<b>130</b>	<b>47</b>	<b>177</b>	<b>639</b>	<b>232</b>	<b>871</b>
<b>KNT/SEA Total</b>		<b>405</b>	<b>81</b>	<b>486</b>	<b>391</b>	<b>142</b>	<b>533</b>	<b>323</b>	<b>82</b>	<b>405</b>	<b>272</b>	<b>70</b>	<b>342</b>	<b>1391</b>	<b>375</b>	<b>1766</b>
		2019Q1			2019Q2			2019Q3			2019Q4			Year 2019		
Location	Case Type	Reloc-ation	Parent Mod	Total	Reloc-ation	Parent Mod	Total	Reloc-ation	Parent Mod	Total	Reloc-ation	Parent Mod	Total	Reloc-ation	Parent Mod	Total
KNT	Domestic	6	66	72	15	53	68	18	64	82	5	60	65	44	243	287
	Paternity	0	11	11	0	9	9	1	14	15	0	15	15	1	49	50
<b>KNT Total</b>		<b>6</b>	<b>77</b>	<b>83</b>	<b>15</b>	<b>62</b>	<b>77</b>	<b>19</b>	<b>78</b>	<b>97</b>	<b>5</b>	<b>75</b>	<b>80</b>	<b>45</b>	<b>292</b>	<b>337</b>
SEA	Domestic	15	80	95	24	78	102	23	78	101	8	70	78	70	306	376
	Paternity	1	13	14	0	11	11	2	7	9	0	6	6	3	37	40
<b>SEA Total</b>		<b>16</b>	<b>93</b>	<b>109</b>	<b>24</b>	<b>89</b>	<b>113</b>	<b>25</b>	<b>85</b>	<b>110</b>	<b>8</b>	<b>76</b>	<b>84</b>	<b>73</b>	<b>343</b>	<b>416</b>
<b>KNT/SEA Total</b>		<b>22</b>	<b>170</b>	<b>192</b>	<b>39</b>	<b>151</b>	<b>190</b>	<b>44</b>	<b>163</b>	<b>207</b>	<b>13</b>	<b>151</b>	<b>164</b>	<b>118</b>	<b>635</b>	<b>753</b>
		2020Q1			2020Q2			2020Q3			2020Q4			Year 2020 (YTD)		
Location	Case Type	Reloc-ation	Parent Mod	Total	Reloc-ation	Parent Mod	Total	Reloc-ation	Parent Mod	Total	Reloc-ation	Parent Mod	Total	Reloc-ation	Parent Mod	Total
KNT	Domestic	5	59	64	11	39	50							16	98	114
	Paternity	1	11	12	1	2	3							2	13	15
<b>KNT Total</b>		<b>6</b>	<b>70</b>	<b>76</b>	<b>12</b>	<b>41</b>	<b>53</b>							<b>18</b>	<b>111</b>	<b>129</b>
SEA	Domestic	17	69	86	19	42	61							36	111	147
	Paternity	1	7	8	1	2	3							2	9	11
<b>SEA Total</b>		<b>18</b>	<b>76</b>	<b>94</b>	<b>20</b>	<b>44</b>	<b>64</b>							<b>38</b>	<b>120</b>	<b>158</b>
<b>KNT/SEA Total</b>		<b>24</b>	<b>146</b>	<b>170</b>	<b>32</b>	<b>85</b>	<b>117</b>							<b>56</b>	<b>231</b>	<b>287</b>
1) Prior to 2019, both parenting and support modifications were included; 2) Starting 2019, only parenting modification and relocation are included.																

Table 2. Number of Cases Resolved and Resolution Category (%)

King County Superior Court

Reporting Category	Q3/18	Q4/18	Q1/19	Q2/19	Q3/19	Q4/19	Q1/20	Q2/20
<b>Total Resolutions (excl. "Matters Filed with Clerk")</b>	<b>12698</b>	<b>12750</b>	<b>12414</b>	<b>13168</b>	<b>13115</b>	<b>13083</b>	<b>11629</b>	<b>8047</b>
<b>Criminal (excl. RALJ): # Resolved</b>	<b>1281</b>	<b>1397</b>	<b>1373</b>	<b>1439</b>	<b>1519</b>	<b>1457</b>	<b>1427</b>	<b>574</b>
Resolved by Jury Trial	3.0%	2.7%	2.6%	3.5%	2.1%	3.6%	2.6%	0.2%
Resolved by Non-Jury Trial	0.3%	0.1%	0.3%	0.5%	0.3%	0.4%	1.0%	1.7%
Resolved by Guilty Plea	78.6%	79.8%	77.9%	78.4%	78.1%	74.0%	72.0%	67.4%
Dismissal	17.7%	17.1%	18.6%	16.7%	19.4%	21.8%	24.2%	30.7%
Others	0.3%	0.2%	0.6%	0.8%	0.2%	0.2%	0.2%	0.0%
<b>Civil: # Resolved</b>	<b>5749</b>	<b>5190</b>	<b>5093</b>	<b>5346</b>	<b>5391</b>	<b>5559</b>	<b>4671</b>	<b>2708</b>
Resolved by Jury Trial	0.4%	0.4%	0.3%	0.5%	0.4%	0.3%	0.2%	0.0%
Resolved by Non-Jury Trial	0.4%	0.3%	0.2%	0.3%	0.5%	0.3%	0.1%	0.1%
Summary Judgment	1.6%	2.5%	1.4%	1.9%	2.2%	1.4%	1.3%	1.0%
Default/ Uncontested	38.4%	33.5%	30.5%	30.4%	29.8%	30.1%	32.3%	39.1%
Arbitration	3.0%	4.1%	3.8%	3.5%	3.3%	3.3%	3.2%	5.4%
Settlement/Dismissal	53.6%	58.0%	63.0%	59.2%	61.7%	60.0%	60.3%	53.3%
Closure by Clerk	2.1%	0.4%	0.0%	3.2%	1.2%	3.7%	1.8%	0.0%
Others	0.6%	0.8%	0.9%	0.9%	0.8%	0.9%	0.8%	1.1%
<b>Domestic: # Resolved</b>	<b>1826</b>	<b>2070</b>	<b>1564</b>	<b>1912</b>	<b>1903</b>	<b>1916</b>	<b>1507</b>	<b>1135</b>
Resolved by Trial	4.9%	2.9%	3.2%	3.2%	2.8%	4.1%	3.1%	1.0%
Default/ Uncontested	10.3%	9.0%	9.3%	8.5%	8.9%	8.4%	9.6%	6.7%
Settlement /Dismissal	83.8%	87.9%	87.0%	87.3%	88.1%	86.3%	86.7%	92.2%
Closure by Clerk	0.7%	0.0%	0.0%	0.4%	0.1%	0.8%	0.3%	0.0%
Others	0.4%	0.2%	0.5%	0.5%	0.1%	0.4%	0.3%	0.2%
<b>Probate: # Resolved</b>	<b>1401</b>	<b>1503</b>	<b>1762</b>	<b>1808</b>	<b>1622</b>	<b>1572</b>	<b>1534</b>	<b>1508</b>
Personal Rep. Appointed	73.3%	73.1%	68.2%	71.8%	68.0%	67.7%	69.0%	73.2%
Dismissal	1.9%	4.5%	6.6%	6.2%	7.0%	7.8%	5.4%	6.2%
Closure by Clerk	0.0%	0.0%	0.0%	0.0%	0.0%	0.0%	0.1%	0.0%
Others	24.8%	22.4%	25.1%	22.0%	25.0%	24.6%	25.5%	20.6%
<b>Guardianship: # Resolved</b>	<b>227</b>	<b>177</b>	<b>165</b>	<b>178</b>	<b>156</b>	<b>157</b>	<b>157</b>	<b>147</b>
Guardian Appointed	59.0%	75.7%	80.6%	87.1%	86.5%	82.2%	80.9%	69.4%
Dismissal	39.7%	23.2%	18.2%	12.4%	11.5%	16.6%	18.5%	28.6%
Closure by Clerk	0.0%	0.0%	0.0%	0.0%	0.0%	0.0%	0.0%	0.0%
Others	1.3%	1.1%	1.2%	0.6%	1.9%	1.3%	0.6%	2.0%
<b>Adoption: # Resolved</b>	<b>101</b>	<b>112</b>	<b>78</b>	<b>131</b>	<b>136</b>	<b>127</b>	<b>79</b>	<b>59</b>
Resolved by Trial	0.0%	0.9%	0.0%	0.8%	0.0%	0.0%	0.0%	0.0%
Uncontested	5.0%	6.3%	12.8%	2.3%	9.6%	3.1%	7.6%	0.0%
Settlement /Dismissal	94.1%	92.9%	87.2%	96.9%	90.4%	96.1%	91.1%	98.3%
Closure by Clerk	0.0%	0.0%	0.0%	0.0%	0.0%	0.8%	0.0%	0.0%
Others	1.0%	0.0%	0.0%	0.0%	0.0%	0.0%	1.3%	1.7%
<b>Paternity: # Resolved</b>	<b>132</b>	<b>129</b>	<b>107</b>	<b>146</b>	<b>129</b>	<b>129</b>	<b>98</b>	<b>27</b>
Resolved by Trial	1.5%	0.8%	0.0%	1.4%	2.3%	0.8%	1.0%	0.0%
Summary Judgment	49.2%	47.3%	50.5%	50.7%	45.0%	44.2%	51.0%	33.3%
Default/ Uncontested	15.2%	22.5%	15.0%	19.2%	18.6%	12.4%	8.2%	3.7%
Settlement/Dismissal	32.6%	29.15%	34.6%	28.8%	34.1%	41.9%	39.8%	63.0%
Closure by Clerk	1.5%	0.0%	0.0%	0.0%	0.0%	0.0%	0.0%	0.0%
Others	0.0%	0.0%	0.0%	0.0%	0.0%	0.8%	0.0%	0.0%
<b>ITA(civil commitment): # Resolved</b>	<b>1123</b>	<b>1144</b>	<b>1271</b>	<b>1259</b>	<b>1275</b>	<b>1175</b>	<b>1123</b>	<b>1116</b>
Court Decision to Commit	58.7%	60.2%	53.5%	52.9%	53.6%	50.2%	47.9%	44.6%
Closed by Court	0.0%	0.0%	0.0%	0.0%	0.0%	0.0%	0.0%	0.0%
Dismissal	15.9%	17.4%	13.6%	12.8%	15.2%	18.6%	14.1%	13.6%
Others	25.4%	22.4%	32.9%	34.3%	31.2%	31.1%	38.0%	41.8%
<b>Juv. Dependency: # Resolved</b>	<b>181</b>	<b>145</b>	<b>201</b>	<b>142</b>	<b>190</b>	<b>155</b>	<b>137</b>	<b>65</b>
Finding of Dependency	84.0%	81.4%	82.6%	85.2%	64.7%	39.4%	48.2%	41.5%
Dismissal	15.5%	18.6%	17.4%	14.8%	34.7%	50.6%	50.4%	58.5%
Others	0.6%	0.0%	0.0%	0.0%	0.5%	0.0%	1.5%	0.0%

Table 2 (cont.). Number of Cases Resolved and Resolution Category (%)

King County Superior Court

Reporting Category	Q3/18	Q4/18	Q1/19	Q2/19	Q3/19	Q4/19	Q1/20	Q2/20
<b>Juv. Terminations: # Resolved</b>	<b>63</b>	<b>71</b>	<b>58</b>	<b>58</b>	<b>34</b>	<b>37</b>	<b>40</b>	<b>15</b>
Finding of Dependency	81.0%	87.3%	79.3%	84.5%	88.2%	64.9%	85.0%	60.0%
Dismissal	19.0%	12.7%	20.7%	15.5%	11.8%	35.1%	15.0%	40.0%
Others	0.0%	0.0%	0.0%	0.0%	0.0%	0.0%	0.0%	0.0%
<b>ARY/CHINS/OTHER: # Resolved</b>	<b>62</b>	<b>36</b>	<b>43</b>	<b>49</b>	<b>50</b>	<b>41</b>	<b>29</b>	<b>14</b>
Approve of Petition	40.3%	38.9%	67.5%	63.2%	42.0%	39.0%	13.7%	28.6%
Dismissal	59.7%	61.1%	32.5%	36.7%	58.0%	61.0%	86.2%	71.4%
Others	0.0%	0.0%	0.0%	0.0%	0.0%	0.0%	0.0%	0.0%
<b>Juvenile Truancy: # Resolved</b>	<b>206</b>	<b>420</b>	<b>386</b>	<b>377</b>	<b>424</b>	<b>445</b>	<b>548</b>	<b>497</b>
Approve of Petition	0.5%	5.2%	7.8%	8.2%	0.2%	0.2%	0.5%	0.2%
Dismissal	99.5%	94.8%	92.2%	91.8%	99.8%	99.8%	99.5%	99.8%
Others	0.0%	0.0%	0.0%	0.0%	0.0%	0.0%	0.0%	0.0%
<b>Juvenile Offender: # Resolved</b>	<b>305</b>	<b>320</b>	<b>261</b>	<b>278</b>	<b>250</b>	<b>245</b>	<b>232</b>	<b>132</b>
Resolved by Trial (Fact Finding)	1.0%	0.0%	1.5%	0.0%	0.0%	0.0%	2.2%	0.8%
Resolved by Guilty Plea	40.3%	42.2%	41.0%	34.9%	40.8%	39.6%	34.5%	31.3%
Dismissal	42.0%	35.0%	31.0%	41.7%	40.0%	36.9%	43.1%	47.0%
Deferred Disposition (DDSP)	13.4%	15.6%	11.5%	13.7%	14.8%	16.7%	11.2%	15.2%
Others (including Deferred Prosecution)	3.3%	7.2%	14.9%	9.7%	4.4%	4.1%	9.1%	6.1%
<b>Criminal RALJ: # Resolved</b>	<b>27</b>	<b>21</b>	<b>35</b>	<b>32</b>	<b>26</b>	<b>41</b>	<b>22</b>	<b>39</b>
RALJ Decision	44.4%	81.0%	68.6%	75.0%	65.4%	65.9%	86.4%	76.9%
Dismissal	48.2%	9.5%	28.6%	18.8%	26.9%	19.5%	13.6%	20.5%
Others	7.4%	9.5%	2.9%	6.3%	7.7%	14.6%	0.0%	2.6%
<b>Civil RALJ: # Resolved</b>	<b>14</b>	<b>15</b>	<b>17</b>	<b>13</b>	<b>10</b>	<b>27</b>	<b>25</b>	<b>11</b>
RALJ Decision	57.1%	40.0%	52.9%	46.2%	30.0%	37.0%	20.0%	45.5%
Dismissal	42.9%	60.0%	47.1%	53.8%	60.0%	46.1%	28.0%	45.5%
Others	0.0%	0.0%	0.0%	0.0%	10.0%	14.8%	52.0%	9.1%

Chart 2-A. Quarterly Resolutions  
Total Judicial Cases Only ("Matters Filed with Clerk" excluded)

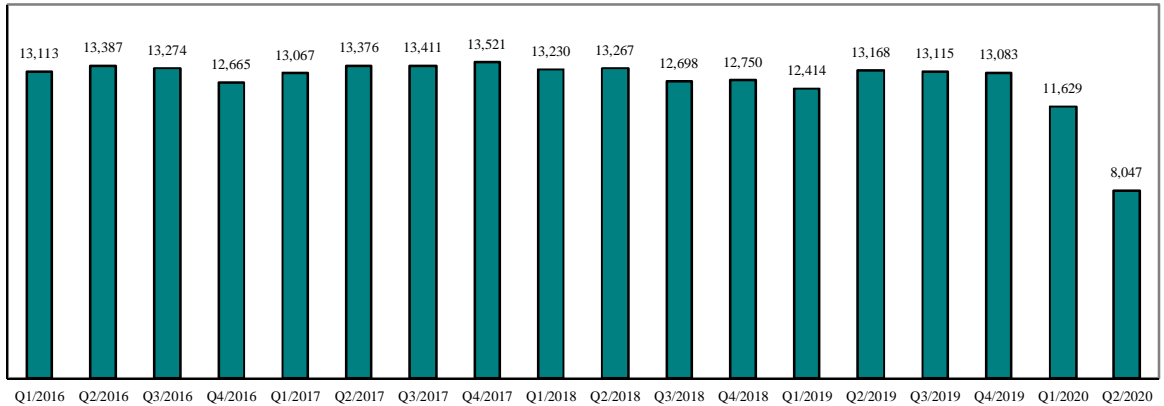
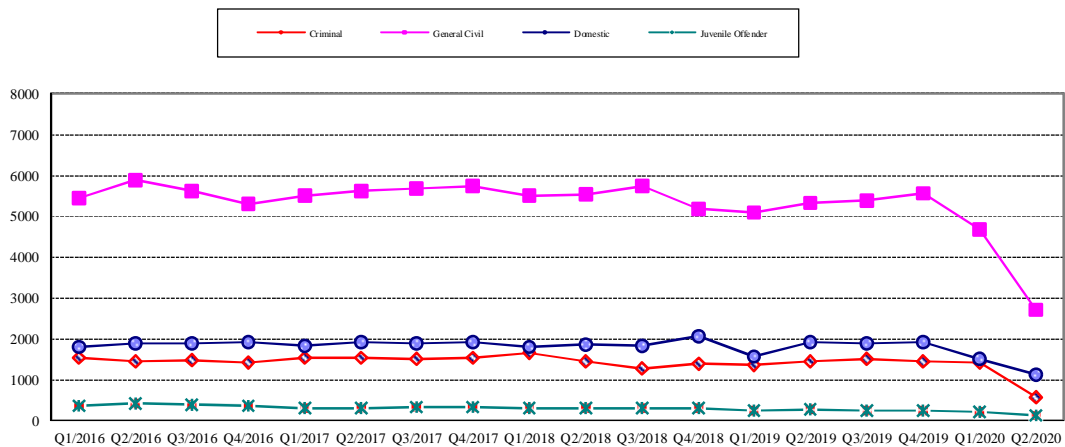


Chart 2-B. Quarterly Resolutions: Criminal, Dmestic, General Civil and Juvenile Offender Cases Only



Note: "General Civil" is specifically defined in this report. The category of "General Civil" does **not** include the following case types: domestic, probate, guardianship, adoption, paternity, mental illness, juvenile cases (dependency, at-risk youth, child-in-need of service), civil RALJ, and tax filings that don't require judicial resources ("matters filed with clerk"). Please check the Appendix for the cause codes in the "General Civil" category.



Table 3. Age of Resolved Cases  
King County Superior Court

Reporting Category	Age of Cases at Resolution							
	Q3/18	Q4/18	Q1/19	Q2/19	Q3/19	Q4/19	Q1/20	Q2/20
<b>Criminal (excl. RALJ)</b>								
<b>Age (days)</b>								
50% Cases Resolved by Day	129	132	144	127	109	104	118	112
90% Cases Resolved by Day	370	399	453	454	411	431	435	455
<b>Comparison with Court Standard of</b>								
90% in 4 months	47%	46%	43%	49%	53%	54%	51%	53%
98% in 6 months	65%	64%	59%	61%	66%	68%	66%	67%
100% in 9 months	81%	81%	76%	76%	79%	80%	80%	79%
<b>Civil (excl. RALJ)</b>								
<b>Age (days)</b>								
50% Cases Resolved by Day	38	46	54	58	62	64	42	73
90% Cases Resolved by Day	362	363	365	385	406	399	361	361
<b>Comparison with Court Standard of</b>								
90% in 12 months	91%	89%	89%	88%	86%	86%	90%	90%
98% in 18 months	97%	97%	99%	97%	95%	94%	97%	98%
100% in 24 months	99%	99%	100%	100%	99%	98%	99%	100%
<b>Domestic</b>								
<b>Age (days)</b>								
50% Cases Resolved by Day	155	139	169	190	157	149	153	170
90% Cases Resolved by Day	405	379	386	411	435	400	405	383
<b>Comparison with Court Standard of</b>								
90% in 8 months	64%	67%	65%	62%	67%	71%	66%	64%
98% in 10 months	73%	77%	76%	74%	75%	79%	75%	77%
100% in 14 months	91%	92%	92%	90%	89%	92%	91%	93%
<b>Probate</b>								
<b>Age (days)</b>								
50% Cases Resolved by Day	0	0	0	0	0	0	0	5
90% Cases Resolved by Day	11	20	25	25	30	30	18	30
<b>Comparison with Court Standard of</b>								
90% in 8 months	98%	97%	97%	97%	97%	98%	98%	99%
98% in 18 months	99%	98%	98%	98%	97%	98%	99%	100%
100% in 36 months	100%	99%	99%	98%	97%	98%	99%	100%
<b>Guardianship</b>								
<b>Age (days)</b>								
50% Cases Resolved by Day	64	59	51	54	52	59	52	53
90% Cases Resolved by Day	231	140	161	133	127	163	161	265
<b>Comparison with Court Standard of</b>								
90% in 8 months	91%	95%	96%	96%	98%	93%	96%	90%
98% in 18 months	95%	97%	100%	99%	99%	98%	99%	94%
100% in 36 months	100%	97%	100%	99%	99%	99%	99%	97%
<b>Adoption</b>								
<b>Age (days)</b>								
50% Cases Resolved by Day	77	54	38	30	38	35	36	70
90% Cases Resolved by Day	344	207	262	274	227	156	257	231
<b>Comparison with Court Standard of</b>								
90% in 8 months	87%	90%	89%	87%	92%	95%	89%	93%
98% in 10 months	89%	93%	92%	92%	95%	98%	94%	97%
100% in 14 months	91%	97%	96%	99%	97%	99%	96%	100%
<b>Paternity</b>								
<b>Age (days)</b>								
50% Cases Resolved by Day	129	140	158	164	131	121	152	275
90% Cases Resolved by Day	320	298	298	315	297	316	354	515
<b>Comparison with Court Standard of</b>								
90% in 8 months	78%	79%	79%	74%	79%	83%	76%	41%
98% in 10 months	85%	91%	93%	88%	90%	89%	87%	67%
100% in 14 months	96%	96%	100%	96%	93%	97%	95%	85%

Table 3 (cont.) Age of Resolved Cases

King County Superior Court

Reporting Category	Age of Cases at Resolution							
	Q3/18	Q4/18	Q1/19	Q2/19	Q3/19	Q4/19	Q1/20	Q2/20
<b>ITA (civil commitment) *</b>								
Age (days)								
50% Cases Resolved by Day	4	4	6	6	6	7	9	10
90% Cases Resolved by Day	22	20	59	24	22	27	32	30
<b>Juvenile Dependency (DEP)</b>								
Age (days)								
50% Cases Resolved by Day	103	116	128	105	116	211	198	190
90% Cases Resolved by Day	199	360	321	217	292	1056	618	517
<b>Comparison with Court Standard of</b>								
90% in 8 months	94%	76%	78%	91%	86%	54%	66%	55%
98% in 10 months	99%	89%	87%	93%	90%	62%	78%	71%
100% in 14 months	100%	91%	93%	94%	94%	73%	86%	77%
<b>Juvenile Termination (TER)</b>								
Age (days)								
50% Cases Resolved by Day	157	150	161	171	171	190	83	390
90% Cases Resolved by Day	501	269	467	329	377	375	523	675
<b>Comparison with Court Standard of</b>								
90% in 8 months	67%	86%	64%	72%	74%	63%	80%	27%
98% in 10 months	75%	93%	81%	90%	80%	71%	80%	40%
100% in 14 months	84%	99%	87%	95%	95%	98%	83%	67%
<b>Juv ARY/CHINS/OTHER</b>								
Age (days)								
50% Cases Resolved by Day	63	34	30	30	41	50	66	89
90% Cases Resolved by Day	240	228	119	226	230	238	251	224
<b>Comparison with Court Standard of</b>								
90% in 8 months	91%	95%	100%	96%	92%	91%	86%	93%
98% in 10 months	95%	100%	100%	98%	96%	93%	100%	93%
100% in 14 months	97%	100%	100%	100%	98%	95%	100%	93%
<b>Juvenile Truancy*</b>								
Age (days)								
50% Cases Resolved by Day	305	289	366	378	468	327	406	489
90% Cases Resolved by Day	607	470	544	623	616	700	1112	919
<b>Juvenile Offender</b>								
Age (days)								
50% Cases Resolved by Day	116	115	122	116	140	140	133	147
90% Cases Resolved by Day	327	260	285	345	307	385	331	330
<b>Comparison with Court Standard of</b>								
90% in 4 months	52%	54%	49%	52%	43%	47%	47%	45%
98% in 6 months	71%	79%	68%	68%	66%	65%	54%	59%
100% in 9 months	86%	91%	88%	84%	84%	84%	82%	76%
<b>Criminal RALJ</b>								
Age (days)								
50% Cases Resolved by Day	247	331	364	233	216	302	331	314
90% Cases Resolved by Day	444	519	588	493	500	716	490	632
<b>Civil RALJ</b>								
Age (days)								
50% Cases Resolved by Day	176	162	194	166	167	171	108	182
90% Cases Resolved by Day	333	386	291	259	210	324	323	250

\* No standard yet.

Table 4. Active Pending Caseload Statistics  
King County Superior Court

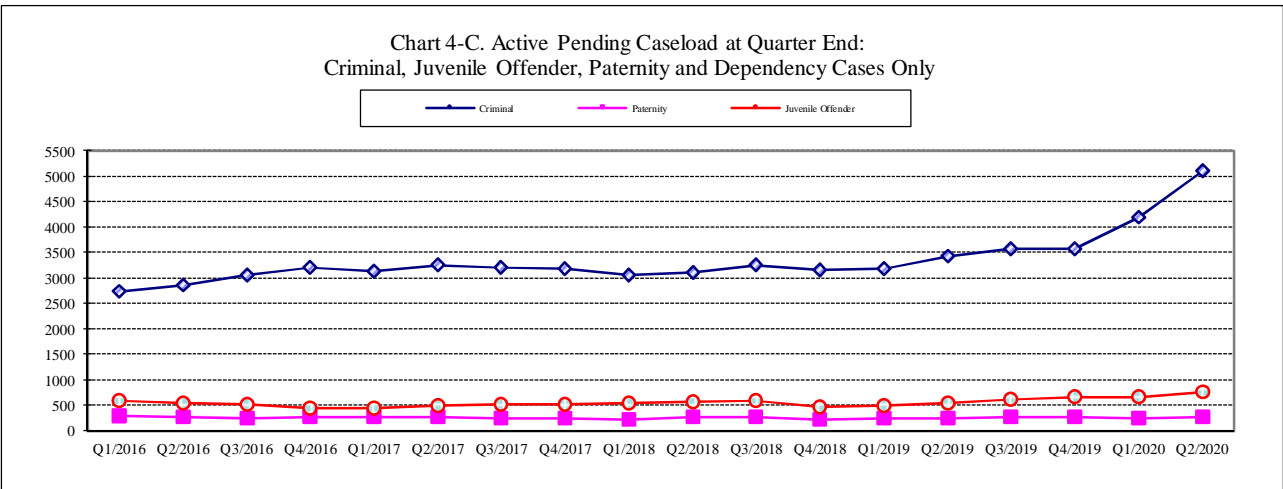
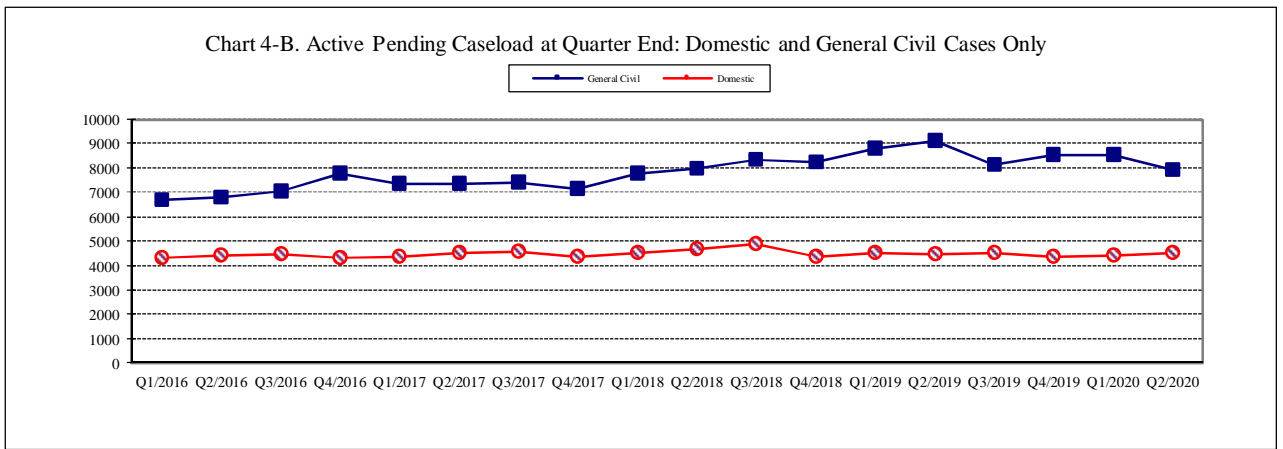
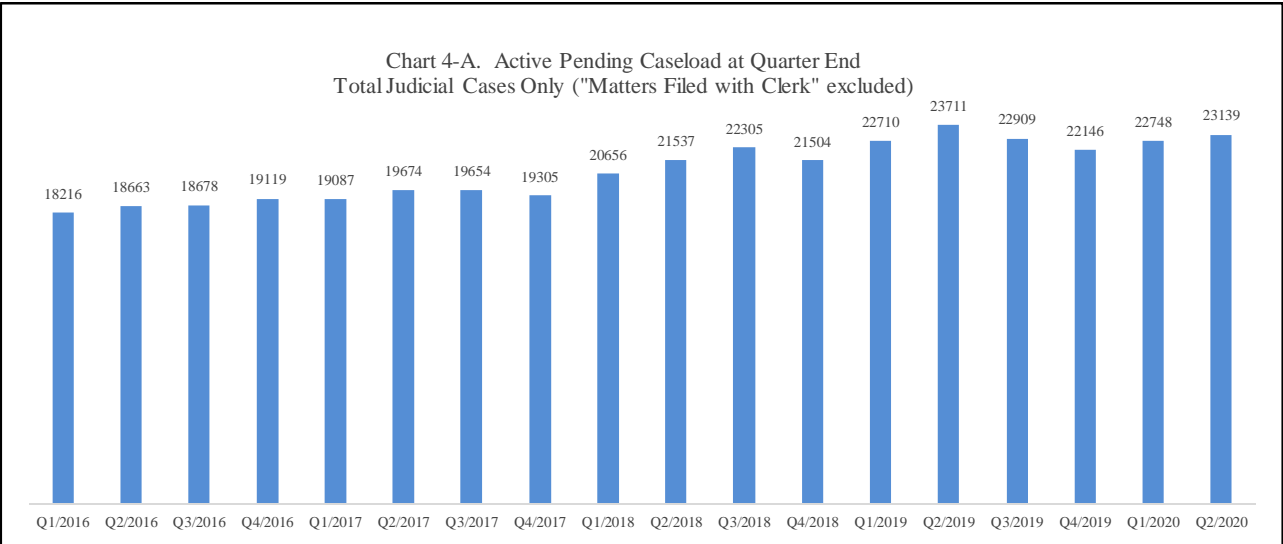
Reporting Category		Q3/18	Q4/18	Q1/19	Q2/19	Q3/19	Q4/19	Q1/20	Q2/20
<b>Total (incl. RALJ)</b>									
Previous Pending	(+)	21537	22305	12750	12414	13168	13115	22146	22746
New Filing	(+)	13094	12918	13218	13666	13041	12964	12475	8942
Resolved	(-)	12698	12750	12414	13168	13115	13083	11629	8047
<b>End Pending</b>		<b>22305</b>	<b>21504</b>	<b>22710</b>	<b>23711</b>	<b>22909</b>	<b>22146</b>	<b>22748</b>	<b>23139</b>
<b>Resolution Rate*</b>		<b>0.970</b>	<b>0.987</b>	<b>0.939</b>	<b>0.964</b>	<b>1.006</b>	<b>1.009</b>	<b>0.932</b>	<b>0.900</b>
<b>Criminal (excl. RALJ)</b>									
Previous Pending	(+)	3113	3247	3150	3176	3420	3579	3564	4188
New Filing	(+)	1460	1508	1362	1575	1928	1742	1628	1149
Resolved	(-)	1281	1397	1373	1439	1519	1457	1427	574
<b>End Pending</b>		<b>3247</b>	<b>3150</b>	<b>3176</b>	<b>3420</b>	<b>3579</b>	<b>3564</b>	<b>4188</b>	<b>5113</b>
<b>Resolution Rate*</b>		<b>0.877</b>	<b>0.926</b>	<b>1.008</b>	<b>0.914</b>	<b>0.788</b>	<b>0.836</b>	<b>0.877</b>	<b>0.500</b>
<b>Civil (excl. RALJ)</b>									
Previous Pending	(+)	8026	8366	8243	8813	9135	8152	8576	8515
New Filing	(+)	5714	5308	5480	5373	5031	5318	4981	2959
Resolved	(-)	5749	5189	5093	5346	5391	5559	4671	2708
<b>End Pending</b>		<b>8366</b>	<b>8243</b>	<b>8813</b>	<b>9135</b>	<b>8152</b>	<b>8576</b>	<b>8515</b>	<b>7900</b>
<b>Resolution Rate*</b>		<b>1.006</b>	<b>0.978</b>	<b>0.929</b>	<b>0.995</b>	<b>1.072</b>	<b>1.045</b>	<b>0.938</b>	<b>0.915</b>
<b>Domestic</b>									
Previous Pending	(+)	4683	4886	4381	4529	4478	4516	4384	4431
New Filing	(+)	2035	1694	1697	1863	1956	1764	1682	1179
Resolved	(-)	1826	2070	1564	1912	1903	1916	1507	1135
<b>End Pending</b>		<b>4886</b>	<b>4381</b>	<b>4529</b>	<b>4478</b>	<b>4516</b>	<b>4384</b>	<b>4431</b>	<b>4511</b>
<b>Resolution Rate*</b>		<b>0.897</b>	<b>1.222</b>	<b>0.922</b>	<b>1.026</b>	<b>0.973</b>	<b>1.086</b>	<b>0.896</b>	<b>0.963</b>
<b>Probate</b>									
Previous Pending	(+)	1102	1161	1146	1235	1476	1545	690	778
New Filing	(+)	1432	1569	1762	1820	1621	1601	1622	1613
Resolved	(-)	1401	1503	1762	1808	1622	1572	1534	1508
<b>End Pending</b>		<b>1161</b>	<b>1146</b>	<b>1235</b>	<b>1476</b>	<b>1545</b>	<b>690</b>	<b>778</b>	<b>869</b>
<b>Resolution Rate*</b>		<b>0.978</b>	<b>0.958</b>	<b>1.000</b>	<b>0.993</b>	<b>1.001</b>	<b>0.982</b>	<b>0.946</b>	<b>0.935</b>
<b>Guardianship</b>									
Previous Pending	(+)	380	371	409	509	377	429	235	240
New Filing	(+)	213	246	200	170	189	147	180	175
Resolved	(-)	227	177	165	178	156	157	157	147
<b>End Pending</b>		<b>371</b>	<b>409</b>	<b>509</b>	<b>377</b>	<b>429</b>	<b>235</b>	<b>240</b>	<b>285</b>
<b>Resolution Rate*</b>		<b>1.066</b>	<b>0.720</b>	<b>0.825</b>	<b>1.047</b>	<b>0.825</b>	<b>1.068</b>	<b>0.872</b>	<b>0.840</b>
<b>Adoption</b>									
Previous Pending	(+)	170	171	174	197	205	196	184	220
New Filing	(+)	102	126	97	139	133	114	119	74
Resolved	(-)	101	112	78	131	136	127	79	59
<b>End Pending</b>		<b>171</b>	<b>174</b>	<b>197</b>	<b>205</b>	<b>196</b>	<b>184</b>	<b>220</b>	<b>234</b>
<b>Resolution Rate*</b>		<b>0.990</b>	<b>0.889</b>	<b>0.804</b>	<b>0.942</b>	<b>1.023</b>	<b>1.114</b>	<b>0.664</b>	<b>0.797</b>
<b>Paternity</b>									
Previous Pending	(+)	252	256	225	246	242	253	251	239
New Filing	(+)	138	102	125	140	137	124	101	53
Resolved	(-)	132	129	107	146	129	129	98	27
<b>End Pending</b>		<b>256</b>	<b>225</b>	<b>246</b>	<b>242</b>	<b>253</b>	<b>251</b>	<b>239</b>	<b>268</b>
<b>Resolution Rate*</b>		<b>0.957</b>	<b>1.265</b>	<b>0.856</b>	<b>1.043</b>	<b>0.942</b>	<b>1.040</b>	<b>0.970</b>	<b>0.509</b>
<b>ITA (civil commitment)</b>									
Previous Pending	(+)	191	310	283	206	201	246	288	263
New Filing	(+)	1244	1259	1192	1254	1320	1219	1155	1267
Resolved	(-)	1123	1144	1271	1259	1275	1175	1123	1116
<b>End Pending</b>		<b>310</b>	<b>283</b>	<b>206</b>	<b>201</b>	<b>246</b>	<b>288</b>	<b>263</b>	<b>433</b>
<b>Resolution Rate*</b>		<b>0.903</b>	<b>0.909</b>	<b>1.066</b>	<b>1.004</b>	<b>0.966</b>	<b>0.964</b>	<b>0.972</b>	<b>0.881</b>

\* A value of "Resolution Rate" less than one indicates the resolution pace is slower than the filing pace.

Table 4 (cont.) Active Pending Caseload Statistics  
King County Superior Court

Reporting Category	Q3/18	Q4/18	Q1/19	Q2/19	Q3/19	Q4/19	Q1/20	Q2/20
<b>Juvenile Dependency (DEP)</b>								
Previous Pending (+)	406	411	434	428	590	587	647	638
New Filing (+)	186	193	199	227	193	192	133	112
Resolved (-)	181	145	201	142	190	155	137	65
<b>End Pending</b>	<b>411</b>	<b>434</b>	<b>428</b>	<b>590</b>	<b>587</b>	<b>647</b>	<b>638</b>	<b>692</b>
<b>Resolution Rate*</b>	<b>0.973</b>	<b>0.751</b>	<b>1.010</b>	<b>0.626</b>	<b>0.984</b>	<b>0.807</b>	<b>1.030</b>	<b>0.580</b>
<b>Juvenile Termination (TER)</b>								
Previous Pending (+)	209	231	244	260	241	248	277	297
New Filing (+)	85	82	74	39	45	67	62	64
Resolved (-)	63	71	58	58	34	37	40	15
<b>End Pending</b>	<b>231</b>	<b>244</b>	<b>260</b>	<b>241</b>	<b>248</b>	<b>277</b>	<b>297</b>	<b>332</b>
<b>Resolution Rate*</b>	<b>0.741</b>	<b>0.866</b>	<b>0.784</b>	<b>1.487</b>	<b>0.756</b>	<b>0.552</b>	<b>0.645</b>	<b>0.234</b>
<b>Juv ARY/CHINS/OTHERS</b>								
Previous Pending (+)	130	128	146	152	86	97	100	119
New Filing (+)	58	85	42	63	57	44	50	22
Resolved (-)	62	36	43	49	50	41	29	14
<b>End Pending</b>	<b>128</b>	<b>146</b>	<b>152</b>	<b>86</b>	<b>97</b>	<b>100</b>	<b>119</b>	<b>128</b>
<b>Resolution Rate*</b>	<b>1.069</b>	<b>0.424</b>	<b>1.024</b>	<b>0.778</b>	<b>0.877</b>	<b>0.932</b>	<b>0.580</b>	<b>0.636</b>
<b>Juvenile Truancy</b>								
Previous Pending (+)	2172	2017	2041	2313	2556	2244	2112	1976
New Filing (+)	45	461	659	620	109	318	448	45
Resolved (-)	206	420	386	377	424	445	548	497
<b>End Pending</b>	<b>2017</b>	<b>2041</b>	<b>2313</b>	<b>2556</b>	<b>2244</b>	<b>2112</b>	<b>1976</b>	<b>1484</b>
<b>Resolution Rate*</b>	<b>4.578</b>	<b>0.911</b>	<b>0.586</b>	<b>0.608</b>	<b>3.890</b>	<b>1.399</b>	<b>1.223</b>	<b>11.044</b>
<b>Juvenile Offender</b>								
Previous Pending (+)	554	595	464	479	539	614	647	659
New Filing (+)	335	241	276	333	273	239	268	216
Resolved (-)	305	320	261	278	250	245	232	132
<b>End Pending</b>	<b>595</b>	<b>464</b>	<b>479</b>	<b>539</b>	<b>614</b>	<b>647</b>	<b>659</b>	<b>758</b>
<b>Resolution Rate*</b>	<b>0.910</b>	<b>1.328</b>	<b>0.946</b>	<b>0.835</b>	<b>0.916</b>	<b>1.025</b>	<b>0.866</b>	<b>0.611</b>
<b>Criminal RALJ</b>								
Previous Pending (+)	111	118	126	133	129	136	140	147
New Filing (+)	34	28	42	27	33	44	34	6
Resolved (-)	27	21	35	32	26	41	22	39
<b>End Pending</b>	<b>118</b>	<b>126</b>	<b>133</b>	<b>129</b>	<b>136</b>	<b>140</b>	<b>147</b>	<b>96</b>
<b>Resolution Rate*</b>	<b>0.794</b>	<b>0.750</b>	<b>0.833</b>	<b>1.185</b>	<b>0.788</b>	<b>0.932</b>	<b>0.647</b>	<b>6.560</b>
<b>Civil RALJ</b>								
Previous Pending (+)	38	37	38	34	36	47	51	38
New Filing (+)	13	16	11	23	16	31	12	8
Resolved (-)	14	15	17	13	10	27	25	11
<b>End Pending</b>	<b>37</b>	<b>38</b>	<b>34</b>	<b>36</b>	<b>47</b>	<b>51</b>	<b>38</b>	<b>36</b>
<b>Resolution Rate*</b>	<b>1.077</b>	<b>0.938</b>	<b>1.545</b>	<b>0.565</b>	<b>0.625</b>	<b>0.871</b>	<b>2.083</b>	<b>1.375</b>

\* A value of "Resolution Rate" less than one indicates the resolution pace is slower than the filing pace.



Note: "General Civil" is specifically defined in this report. The category of "General Civil" does **not** include the following case types: domestic, probate, guardianship, adoption, paternity, mental illness, juvenile cases (dependency, at-risk youth, child-in-need of service), civil RALJ, and tax filings that don't require judicial resources ("matters filed with clerk"). Please check the Appendix for the cause codes in the "General Civil" category.

Table 5. Age of Pending Cases

King County Superior Court

Reporting Category	Age of Pending Cases and # of Cases in Each Age Interval							
	Q3/18	Q4/18	Q1/19	Q2/19	Q3/19	Q4/19	Q1/20	Q2/20
<b>Criminal (excl. RALJ): # of Cases</b>	<b>3247</b>	<b>3150</b>	<b>3176</b>	<b>3420</b>	<b>3579</b>	<b>3564</b>	<b>4148</b>	<b>5113</b>
<b>Age (days)</b>								
Median (50 percentile)	124	132	135	107	95	105	92	137
90 percentile	573	450	445	418	433	430	365	412
<b># of Cases in Age Interval</b>								
0 - 60 days (0 - 2 months)	842	814	1023	1232	1330	1169	1710	1188
61 - 120 days (3 - 4 months)	757	655	524	592	724	789	747	1039
121 - 180 days (5 - 6 months)	455	483	415	440	390	473	513	856
181 - 270 days (7 - 9 months)	459	439	455	409	409	414	525	840
> 270 days (> 9 months)	734	759	759	747	726	719	693	1190
<b>Civil (excl. RALJ): # of Cases</b>	<b>8366</b>	<b>8243</b>	<b>8813</b>	<b>9135</b>	<b>8152</b>	<b>8576</b>	<b>8515</b>	<b>7900</b>
<b>Age (days)</b>								
Median (50 percentile)	145	143	138	137	158	146	153	179
90 percentile	502	405	426	433	418	399	420	484
<b># of Cases in Age Interval</b>								
0 - 120 days (0 - 4 months)	3684	3725	3994	4078	3314	3808	3483	2714
121 - 240 days (5 - 8 months)	796	1908	2188	2328	2292	2172	2357	2198
241 - 360 days (9 - 12 months)	395	1550	1263	1436	1430	1464	1388	1359
361 - 540 days (13 - 18 months)	279	733	938	830	656	771	891	1067
541 - 720 days (19 - 24 months)	115	194	275	303	307	202	228	365
> 720 days (> 24 months)	89	133	155	160	173	160	168	197
<b>Domestic: # of Cases</b>	<b>4886</b>	<b>4381</b>	<b>4529</b>	<b>4478</b>	<b>4516</b>	<b>4384</b>	<b>4431</b>	<b>4511</b>
<b>Age (days)</b>								
Median (50 percentile)	125	136	145	118	117	131	144	172
90 percentile	752	443	471	474	460	477	468	511
<b># of Cases in Age Interval</b>								
0 - 120 days (0 - 4 months)	2361	2004	2017	2252	2303	2087	1990	1581
121 - 240 days (5 - 8 months)	1298	1152	1188	969	1082	1105	1213	1283
241 - 360 days (9 - 12 months)	606	627	618	569	476	569	593	784
361 - 540 days (13 - 18 months)	279	267	342	319	289	243	258	448
> 540 days (> 18 months)	342	331	364	369	366	380	377	115
<b>Probate: # of Cases</b>	<b>1161</b>	<b>1146</b>	<b>1235</b>	<b>1476</b>	<b>1545</b>	<b>690</b>	<b>778</b>	<b>869</b>
<b>Age (days)</b>								
Median (50 percentile)	465	480	517	517	570	347	298	230
90 percentile	1816	1623	1648	1612	1672	1640	1623	1574
<b># of Cases in Age Interval</b>								
0 - 120 days (0 - 4 months)	163	204	202	288	247	220	257	311
121 - 240 days (5 - 8 months)	151	108	146	160	173	83	109	132
241 - 360 days (9 - 12 months)	171	135	101	131	164	50	58	69
361 - 540 days (13 - 18 months)	152	177	191	196	162	65	63	68
> 540 days (> 18 months)	524	522	595	701	799	272	291	48
<b>Guardianship: # of Cases</b>	<b>371</b>	<b>409</b>	<b>509</b>	<b>377</b>	<b>429</b>	<b>235</b>	<b>240</b>	<b>285</b>
<b>Age (days)</b>								
Median (50 percentile)	124	125	118	177	241	133	139	125
90 percentile	742	612	650	741	797	881	976	1028
<b># of Cases in Age Interval</b>								
0 - 120 days (0 - 4 months)	180	204	255	125	155	115	115	139
121 - 240 days (5 - 8 months)	51	58	84	117	57	24	32	39
241 - 360 days (9 - 12 months)	53	39	43	32	98	25	8	19
361 - 540 days (13 - 18 months)	41	53	57	27	33	19	28	19
> 540 days (> 18 months)	46	55	70	76	86	52	57	15

Table 5 (cont.). Age of Pending Cases

King County Superior Court

Reporting Category	Age of Pending Cases and # of Cases in Each Age Interval							
	Q3/18	Q4/18	Q1/19	Q2/19	Q3/19	Q4/19	Q1/20	Q2/20
<b>Adoption: # of Cases</b>	<b>171</b>	<b>174</b>	<b>197</b>	<b>205</b>	<b>196</b>	<b>184</b>	<b>220</b>	<b>234</b>
<b>Age (days)</b>								
Median (50 percentile)	129	136	149	159	198	291	225	274
90 percentile	607	522	612	691	795	887	966	1051
<b># of Cases in Age Interval</b>								
0 - 120 days (0 - 4 months)	82	81	83	87	76	53	81	64
121 - 240 days (5 - 8 months)	30	37	44	41	32	30	31	42
241 - 360 days (9 - 12 months)	17	9	23	21	30	22	18	27
361 - 540 days (13 - 18 months)	32	31	13	13	17	30	37	25
> 540 days (> 18 months)	10	16	34	43	41	49	53	29
<b>Paternity: # of Cases</b>	<b>256</b>	<b>225</b>	<b>246</b>	<b>242</b>	<b>253</b>	<b>251</b>	<b>239</b>	<b>268</b>
<b>Age (days)</b>								
Median (50 percentile)	98	115	102	83	94	105	126	171
90 percentile	416	271	306	270	270	300	335	383
<b># of Cases in Age Interval</b>								
0 - 120 days (0 - 4 months)	145	117	143	156	158	137	117	80
121 - 240 days (5 - 8 months)	76	74	61	57	58	69	75	112
241 - 360 days (9 - 12 months)	18	25	26	11	22	25	29	43
361 - 540 days (13 - 18 months)	11	6	11	13	9	10	12	23
> 540 days (> 18 months)	6	3	5	5	6	10	6	5
<b>ITA (civil commitment): # of Cases</b>	<b>310</b>	<b>283</b>	<b>206</b>	<b>201</b>	<b>246</b>	<b>288</b>	<b>263</b>	<b>433</b>
<b>Age (days)</b>								
Median (50 percentile)	46	28	13	18	14	20	56	53
90 percentile	339	179	220	307	371	420	511	540
<b># of Cases in Age Interval</b>								
0 - 120 days (0 - 4 months)	266	211	169	149	188	219	179	295
121 - 240 days (5 - 8 months)	23	57	17	24	10	14	27	63
> 240 days (> 8 months)	21	15	20	28	48	55	57	58
<b>Juv Dependency (DEP): # of Cases</b>	<b>411</b>	<b>434</b>	<b>428</b>	<b>590</b>	<b>587</b>	<b>647</b>	<b>638</b>	<b>692</b>
<b>Age (days)</b>								
Median (50 percentile)	157	139	118	150	194	195	242	284
90 percentile	570	510	571	631	713	784	847	916
<b># of Cases in Age Interval</b>								
0 - 60 days (0 - 2 months)	109	126	135	139	112	121	84	64
61 - 120 days (3 - 4 months)	74	71	85	106	118	95	88	84
121 - 180 days (5 - 6 months)	55	64	40	76	48	82	86	67
181 - 270 days (7 - 9 months)	44	60	37	75	81	99	88	126
> 270 days (> 9 months)	129	113	131	194	228	250	292	351
<b>Juv Termination (TER): # of Cases</b>	<b>231</b>	<b>244</b>	<b>260</b>	<b>241</b>	<b>248</b>	<b>277</b>	<b>297</b>	<b>332</b>
<b>Age (days)</b>								
Median (50 percentile)	136	170	188	269	329	340	389	320
90 percentile	563	508	555	646	738	809	879	935
<b># of Cases in Age Interval</b>								
0 - 60 days (0 - 2 months)	61	51	47	28	31	46	38	23
61 - 120 days (3 - 4 months)	42	40	40	23	18	30	32	49
121 - 180 days (5 - 6 months)	43	37	37	33	19	21	27	49
181 - 270 days (7 - 9 months)	28	47	45	38	37	15	30	30
> 270 days (> 9 months)	57	69	91	119	143	165	170	181
<b>ARY/CHINS/OTHER: # of Cases</b>	<b>128</b>	<b>146</b>	<b>152</b>	<b>86</b>	<b>97</b>	<b>100</b>	<b>119</b>	<b>128</b>
<b>Age (days)</b>								
Median (50 percentile)	222	132	200	174	132	188	188	240
90 percentile	770	543	632	646	719	811	900	903
<b># of Cases in Age Interval</b>								
0 - 60 days (0 - 2 months)	24	42	30	33	28	20	27	16
61 - 120 days (3 - 4 months)	14	25	14	6	19	16	18	13
121 - 180 days (5 - 6 months)	7	16	28	5	7	11	13	25
181 - 270 days (7 - 9 months)	31	10	20	6	5	13	12	14
> 270 days (> 9 months)	52	53	60	36	38	40	49	60

Table 5 (cont.). Age of Pending Cases

King County Superior Court

Reporting Category	Age of Pending Cases and # of Cases in Each Age Interval							
	Q3/18	Q4/18	Q1/19	Q2/19	Q3/19	Q4/19	Q1/20	Q2/20
<b>Juvenile Truancy: # of Cases</b>	<b>2017</b>	<b>2041</b>	<b>2313</b>	<b>2556</b>	<b>2244</b>	<b>2112</b>	<b>1976</b>	<b>1484</b>
<b>Age (days)</b>								
Median (50 percentile)	223	278	290	194	251	300	315	321
90 percentile	661	615	688	613	706	769	718	747
<b># of Cases in Age Interval</b>								
0 - 60 days (0 - 2 months)	15	385	446	419	63	240	290	26
61 - 120 days (3 - 4 months)	211	80	416	428	248	70	259	108
121 - 180 days (5 - 6 months)	404	21	195	360	342	92	154	332
181 - 270 days (7 - 9 months)	678	482	31	367	585	425	88	250
> 270 days (> 9 months)	709	1073	1225	982	1006	1285	1185	768
<b>Juvenile Offender: # of Cases</b>	<b>595</b>	<b>464</b>	<b>479</b>	<b>539</b>	<b>614</b>	<b>647</b>	<b>659</b>	<b>758</b>
<b>Age (days)</b>								
Median (50 percentile)	94	116	116	101	110	144	145	167
90 percentile	486	300	362	355	405	459	475	477
<b># of Cases in Age Interval</b>								
0 - 60 days (0 - 2 months)	189	119	157	163	173	164	154	143
61 - 120 days (3 - 4 months)	168	125	88	138	151	124	148	138
121 - 180 days (5 - 6 months)	78	101	70	75	108	104	75	129
181 - 270 days (7 - 9 months)	53	56	80	55	71	124	106	107
> 270 days (> 9 months)	107	63	84	108	111	131	176	241
<b>Criminal RALJ: # of Cases</b>	<b>118</b>	<b>126</b>	<b>133</b>	<b>129</b>	<b>136</b>	<b>140</b>	<b>147</b>	<b>96</b>
<b>Age (days)</b>								
Median (50 percentile)	192	191	170	178	212	174	179	209
90 percentile	1130	577	592	683	706	609	643	432
<b># of Cases in Age Interval</b>								
0 - 60 days (0 - 2 months)	25	21	25	17	25	30	24	10
61 - 120 days (3 - 4 months)	17	23	28	21	14	28	30	22
121 - 180 days (5 - 6 months)	12	16	16	29	17	15	20	32
181 - 270 days (7 - 9 months)	22	18	23	21	29	16	24	29
> 270 days (> 9 months)	42	48	41	41	51	51	49	10
<b>Civil RALJ: # of Cases</b>	<b>37</b>	<b>38</b>	<b>34</b>	<b>36</b>	<b>47</b>	<b>51</b>	<b>38</b>	<b>36</b>
<b>Age (days)</b>								
Median (50 percentile)	119	109	98	118	108	61	115	183
90 percentile	566	277	289	355	298	239	288	341
<b># of Cases in Age Interval</b>								
0 - 60 days (0 - 2 months)	8	15	6	8	10	25	9	0
61 - 120 days (3 - 4 months)	11	6	16	10	14	10	14	10
121 - 180 days (5 - 6 months)	9	5	6	8	11	7	6	7
181 - 270 days (7 - 9 months)	4	8	2	6	4	5	5	13
> 270 days (> 9 months)	5	4	4	4	8	4	4	6



Table 6. Seattle vs. Regional Justice Center (KNT): Filing, Resolution, Pending Caseload (%)

King County Superior Court

	Q2/19		Q3/19		Q4/19		Q1/20		Q2/20	
	SEA	KNT	SEA	KNT	SEA	KNT	SEA	KNT	SEA	KNT
<b>Filings Total</b> <i>(excl. filings with clerk)</i>	<b>64%</b>	<b>36%</b>	<b>64%</b>	<b>36%</b>	<b>64%</b>	<b>36%</b>	<b>63%</b>	<b>37%</b>	<b>71%</b>	<b>29%</b>
Criminal (excl. RALJ)	61%	39%	61%	39%	63%	37%	61%	39%	60%	40%
Civil (excl. RALJ)	56%	44%	55%	45%	55%	45%	54%	46%	62%	38%
Domestic	58%	42%	59%	41%	57%	43%	61%	39%	63%	37%
Probate	74%	26%	70%	30%	71%	29%	73%	27%	75%	25%
Guardianship	58%	42%	64%	36%	67%	33%	64%	36%	61%	39%
Adoption	65%	35%	72%	28%	68%	32%	70%	30%	81%	19%
Paternity	49%	51%	44%	56%	41%	59%	46%	55%	45%	55%
ITA (civil commitment)	100%	0%	100%	0%	100%	0%	100%	0%	100%	0%
Juv. Dependency (DEP)	62%	38%	56%	44%	69%	31%	62%	38%	80%	20%
Juv. Termination (TER)	69%	31%	64%	36%	61%	39%	63%	37%	63%	37%
Juvenile ARY/CHINS/Other	52%	48%	53%	47%	50%	50%	50%	50%	41%	59%
Juvenile Truancy	41%	59%	50%	50%	53%	47%	32%	68%	82%	18%
Juvenile Offender	100%	0%	100%	0%	100%	0%	100%	0%	100%	0%
Criminal RALJ	85%	15%	73%	27%	95%	5%	82%	18%	67%	33%
Civil RALJ	96%	4%	88%	13%	84%	16%	92%	8%	88%	12%
<b>Resolution Total</b> <i>(excl. filings with clerk)</i>	<b>63%</b>	<b>37%</b>	<b>63%</b>	<b>37%</b>	<b>62%</b>	<b>38%</b>	<b>62%</b>	<b>38%</b>	<b>70%</b>	<b>30%</b>
Criminal (excl. RALJ)	59%	41%	58%	42%	58%	42%	58%	42%	59%	41%
Civil (excl. RALJ)	54%	46%	54%	46%	53%	47%	54%	46%	61%	39%
Domestic	58%	42%	58%	42%	59%	41%	58%	42%	63%	37%
Probate	75%	25%	71%	29%	71%	29%	74%	26%	73%	27%
Guardianship	61%	39%	61%	39%	69%	31%	67%	33%	66%	34%
Adoption	66%	34%	71%	29%	69%	31%	65%	35%	78%	22%
Paternity	48%	52%	40%	60%	58%	42%	42%	58%	30%	70%
ITA (civil commitment)	100%	0%	100%	0%	100%	0%	100%	0%	100%	0%
Juv. Dependency (DEP)	67%	33%	55%	45%	61%	39%	69%	31%	65%	35%
Juv. Termination (TER)	60%	40%	74%	26%	59%	41%	58%	43%	87%	13%
Juvenile ARY/CHINS/Other	35%	65%	56%	44%	59%	41%	66%	35%	36%	64%
Juvenile Truancy	33%	67%	50%	50%	41%	59%	51%	49%	62%	38%
Juvenile Offender	100%	0%	100%	0%	100%	0%	100%	0%	100%	0%
Criminal RALJ	88%	13%	88%	12%	88%	12%	82%	18%	77%	23%
Civil RALJ	77%	23%	100%	0%	89%	11%	84%	16%	91%	9%
<b>Pending Total</b> <i>(excl. filings with clerk)</i>	<b>62%</b>	<b>38%</b>	<b>63%</b>	<b>37%</b>	<b>63%</b>	<b>37%</b>	<b>63%</b>	<b>37%</b>	<b>64%</b>	<b>36%</b>
Criminal (excl. RALJ)	57%	43%	60%	40%	60%	40%	62%	38%	62%	38%
Civil (excl. RALJ)	63%	37%	65%	35%	66%	34%	64%	36%	65%	35%
Domestic	58%	42%	58%	42%	58%	42%	59%	41%	59%	41%
Probate	76%	24%	74%	26%	67%	33%	66%	34%	67%	33%
Guardianship	67%	33%	68%	32%	62%	38%	61%	39%	57%	43%
Adoption	66%	34%	66%	34%	66%	34%	69%	31%	71%	30%
Paternity	43%	57%	45%	55%	37%	63%	37%	63%	39%	61%
ITA (civil commitment)	100%	0%	100%	0%	100%	0%	100%	0%	100%	0%
Juv. Dependency (DEP)	58%	42%	59%	41%	60%	40%	59%	41%	61%	39%
Juv. Termination (TER)	66%	34%	65%	35%	64%	36%	65%	35%	66%	34%
Juvenile ARY/CHINS/Other	57%	43%	54%	46%	50%	50%	46%	54%	48%	52%
Juvenile Truancy	51%	49%	51%	49%	54%	46%	50%	50%	47%	53%
Juvenile Offender	100%	0%	100%	0%	100%	0%	100%	0%	100%	0%
Criminal RALJ	91%	9%	87%	13%	89%	11%	88%	12%	92%	8%
Civil RALJ	83%	17%	83%	17%	82%	18%	84%	16%	83%	17%

Table 7. Quarterly Utilization of Pro Tem Judges/Commissioners <sup>(1)</sup>

Category	Q1/18	Q2/18	Q3/18	Q4/18	Q1/19	Q2/19	Q3/19	Q4/19	Q1/20	Q2/20
<b>Grand Total</b>	<b>1149</b>	<b>2132</b>	<b>1362</b>	<b>1850</b>	<b>1084</b>	<b>2814</b>	<b>1454</b>	<b>2023</b>	<b>1125</b>	<b>346</b>
<b>FTE Equivalent <sup>(2)</sup></b>	<b>2.6</b>	<b>4.7</b>	<b>3.0</b>	<b>4.1</b>	<b>2.4</b>	<b>6.3</b>	<b>3.2</b>	<b>4.5</b>	<b>2.5</b>	<b>0.8</b>
<b>By Work Type</b>										
Pro Tem Judge	139	357	164	274	179	498	248	503	148	71
Pro Tem Commissioner	1010	1775	1168	1576	905	2316	1206	1520	978	284
<b>By Location</b>										
KCCH	498	822	731	981	434	1602	632	919	378	197
MRJC	164	659	294	403	235	579	411	466	331	35
Juvenile	420	511	161	292	323	462	335	456	284	48
ITA	67	141	176	37	93	171	75	182	132	75
Other	0	0	0	136	0	0	0	0	0	0
<b>By Calendar Type</b>										
Criminal	15	63	24	145	10	133	54	145	42	24
Civil	0	0	0	0	0	0	0	0	0	0
Ex Parte	141	630	231	411	200	432	322	476	143	21
Family Law/Domestic	414	606	650	782	429	1377	588	661	482	167
Dependency	174	327	107	216	184	336	210	196	222	22
Juvenile Offender	32	123	46	57	124	81	95	230	58	27
BECCA	214	61	8	19	16	45	30	30	5	0
ITA	67	141	176	136	93	171	75	182	132	75
Juvenile Drug Court	0	0	0	0	0	0	0	0	0	0
Family Treatment Court	0	0	0	0	0	0	0	0	0	0
Plea Calendar	80	145	111	35	26	205	63	81	43	21
Status/Non-Compliance	0	11	0	0	0	0	0	5	0	0
Other or Unspecified	13	26	9	48	3	34	17	18	0	0
<b>By Reason</b>										
Vacation Backfill	448	738	621	233	121	390	187	345	85	190
Medical Backfill	138	197	137	1431	835	2144	1151	1475	926	46
Duty Time	280	470	320	15	42	63	32	127	62	69
Conference Coverage	14	37	0	134	86	217	84	76	53	0
Congestion	149	264	57	0	0	0	0	0	0	36
Vacancy Coverage	0	426	124	0	0	0	0	0	0	14
Other	120	1	104	37	0	0	0	0	0	0

(1) This table is based on the time sheet for compensation

(2) Judge FTE Equivalent = # of hours / [7.5 hours/day \* 20 days/month \* 3 months] = # of hours/450.

*Data for the most current quarter are incomplete at reporting time and will be updated in next quarterly report.*

*The Pro Tem hours are provided quarterly by the Administrative Services Department of King County Superior Court.*

Table 8. Ex Parte and Family Law Hearings and Documents Signed

<b>Ex Parte: Hearings Held and Documents Signed</b>								
	2019Q3		2019Q4		2020Q1		2020Q2	
	Hearings	Documents Signed	Hearings	Documents Signed	Hearings	Documents Signed	Hearings	Documents Signed
<b>KNT (EXP04/05)</b>								
Civil	163	1148	248	1340	260	1190	65	312
Domestic	299	1444	459	1465	360	1364	21	370
Probate/Guardianship	194	572	271	276	220	271	192	64
Adoption/Paternity	38	123	50	145	32	127	6	8
Ex Parte Via Clerk (EXP06)		3152		3107		2681		3301
<b>KNT Subtotal</b>	<b>694</b>	<b>6439</b>	<b>1028</b>	<b>6333</b>	<b>872</b>	<b>5633</b>	<b>284</b>	<b>4055</b>
<b>SEA (EXP01/02)</b>								
Civil	207	965	326	1182	224	1020	118	703
Domestic	311	1870	405	1992	252	1789	41	441
Probate/Guardianship	517	1653	701	1771	542	1440	415	629
Adoption/Paternity	46	267	45	247	37	197	27	47
Ex Parte Via Clerk (EXP07)		6981		7270		6440		5369
<b>SEA Total</b>	<b>1081</b>	<b>11736</b>	<b>1477</b>	<b>12462</b>	<b>1055</b>	<b>10886</b>	<b>601</b>	<b>7189</b>
<b>KNT/SEA Total</b>	<b>1775</b>	<b>18175</b>	<b>2505</b>	<b>18795</b>	<b>1927</b>	<b>16519</b>	<b>885</b>	<b>11244</b>
<b>FAMILY LAW: Hearings Held and Documents Signed</b>								
	2019Q3		2019Q4		2020Q1		2020Q2	
	Hearings	Documents Signed	Hearings	Documents Signed	Hearings	Documents Signed	Hearings	Documents Signed
<b>KNT (FAM02)</b>								
Civil	479	914	670	958	556	878	268	605
Domestic	468	1285	622	1185	502	1621	40	401
Adoption/Paternity	63	507	84	440	84	488	8	142
<b>KNT Subtotal</b>	<b>1010</b>	<b>2706</b>	<b>1376</b>	<b>2583</b>	<b>1142</b>	<b>2987</b>	<b>316</b>	<b>1148</b>
<b>SEA (FAM01)</b>								
Civil	452	755	519	768	453	726	455	613
Domestic	434	1520	529	1663	428	1548	49	386
Adoption/Paternity	51	505	39	606	56	547	2	158
<b>SEA Total</b>	<b>937</b>	<b>2780</b>	<b>1087</b>	<b>3037</b>	<b>937</b>	<b>2821</b>	<b>506</b>	<b>1157</b>
<b>KNT/SEA Total</b>	<b>1947</b>	<b>5486</b>	<b>2463</b>	<b>5620</b>	<b>2079</b>	<b>5808</b>	<b>822</b>	<b>2305</b>

# Appendix Glossary and Definition

## **Active Status**

A case is active if it is not on suspense status (see Suspense Status).

## **Adoption and paternity Cases (case type 5)**

ADP - Adoption  
CFI - Confidential Intermediary  
CHN - Confidential Change of Name  
DIP - Disestablishment of Parentage  
MDS - Modification/Support Only  
MOD - Modification  
MSC - Miscellaneous  
OAA - Open Adoption Agreement  
PAD - De Facto Parentage  
PAG - Pre Birth Establish Parentage Genetic  
PAS - Establish Parentage Gestational Surrogacy  
PAT - Parentage  
PPR - Initial Pre Placement Report  
PRC - Parentage Rescission/Challenge  
PUR - Parentage (URES/UFSA)  
REL - Relinquishment  
ROB - Relocation Objection  
TER - Termination of Parental Rights

## **Case**

A case is defined as a filing with an assigned case number.

## **Civil Cases (case type 2, no RALJ)**

ALR - Administrative Law Review  
ALRLI - L&I Administrative Law Review  
AOD - Assurance of Discontinuance  
ASB - Asbestos  
ASP - Asbestos Personal Injury  
ASW - Asbestos Wrongful Death  
BAT - Petition to Appeal/Amend Ballot Title  
CAA - Motion to Confirm/Compel Arbitration Award  
CHN - Non Confidential Change of Name  
COL - Collection  
COM - Commercial  
CON - Condemnation  
CRP - Certificate of Restoration of Opportunity  
CRR - Petition for Certificate of Rehabilitation  
DOL - Appeal Licensing Revocation  
DSF - Notice of Deposit of Surplus Funds from Trustee's Sale of Real Property  
DVP - Domestic Violence  
ECP - Enforcement of Canadian Protection Order  
EOM - Emancipation of Minor  
FOR - Foreclosure  
FPO - Foreign Protection Order  
FVL - Motion to Show Cause /Fruivolous Lien  
HAR - Unlawful Harassment  
HSI - Application for Health & Safety Inspection  
INJ - Injunction  
IPL - Complaint for Interpleader  
LUP - Land Use Petition  
MAL - Other Malpractice  
MED - Medical Malpractice  
MER - Meretricious Relationships  
MHA - Malicious Harassment  
MSC - Miscellaneous  
MST - Minor Settlement  
MWP - Minor Work Permit  
NJF - Non Judicial Filing  
OSS - Petition to Issue Out of State Subpoena  
PBC - Petition for Birth Certificate Change  
PBJ - Petition for Justification /Bail Bond Company  
PCC - Petition for Civil Commitment  
PFA - Property Fairness Act  
PIN - Personal Injury  
PPT - Petition for Perpetuation of Testimony  
PRA - Public Records Act

PRG - Property Damage /Gangs  
PRP - Property Damage  
PVO - Petition for Vehicle Ownership  
QTI - Quiet Title  
RCV - Petition to Appoint Receiver  
RDR - Relief from Duty to Register  
RFR - Restoration of Firearms Rights  
RRC - Remove Restricted Covenant  
SCA - Small Claims Appeal  
SDR - School District /Required Action Plan  
SER - Subdivision Election Process Law Review  
SPC - Seizure of Property From Commission of a Crime  
SPR - Seizure of Property Resulting From a Crime  
STK - Stalking Protection  
SXP - Sexual Assault Protection  
TMV - Tort /Motor Vehicle  
TSS - Petition for Approval of Transfer of Structured Settlement  
TTO - Tort /Other  
UND - Unlawful Detainer  
VAP - Vulnerable Adult Protection Order  
VEP - Voter Election Process Law Review  
VVT - Victims of Motor Vehicle Theft /Civil Action  
WDE - Wrongful Death  
WHC - Writ of Habeas Corpus  
WMW - Miscellaneous Writs  
WRM - Writ of Mandamus  
WRR - Writ of Restitution  
WRV - Writ of Review  
XRP - Extreme Risk Protection Order

## **Civil Matters Filed with Clerk (case type 2)**

ABJ - Abstract of Judgment  
FJU - Foreign Judgment  
TAX - Tax Warrants  
TRJ - Transcript of Judgment  
CFJ - Petition for Order Granting Judgment on Confession of Judgment

## **Civil RALJ Cases (case type 2)**

LCA - Lower Court Appeal /Civil  
LCI - Lower Court Appeal /Infractions

## **Completion**

A case is completed if dispositive document is filed with the court following resolution.

## **Criminal Cases (case type 1, no RALJ)**

Adult criminal cases, excluding appeals from courts of limited jurisdiction. This reporting category includes the following crime categories within SCOMIS case type 1:

Homicide  
Sex Crime  
Robbery  
Assault  
Theft/Burglary  
Motor Vehicle Theft  
Controlled Substance  
Others

## **Criminal RALJ Cases (case type 1)**

CRJ - Criminal RALJ

## **Domestic Cases (case type 3)**

CIR - Committed Intimate Relationship  
CUS - Child Custody  
DIC - Dissolution w/ Children  
DIN - Dissolution no Children  
DIS - Dissolution  
DPC - Dissolution of Domestic Partnership w/ Children

DPN - Dissolution of Domestic Partnership /No Children  
 FJU - Out of State Support Registration /Foreign Judgment  
 INC - Annulment /Inv of Marriage w/ Children  
 IND - Annulment /Inv of Domestic Partnership w/ Children  
 INP - Invalidity, Domestic Partnership  
 INV - Annulment /Invalidity  
 MDS - Modification/Support Only  
 MOD - Modification  
 MSC - Miscellaneous  
 MWA - Mandatory Wage Assignment  
 OSC - Out of State Custody  
 PPS - Parenting Plan / Child Support  
 PSO - Petition for Entry of KC Support Order  
 RCV - Relative Child Visitation  
 RIC - Reciprocal, Resp in County  
 ROB - Relocation /Objection  
 ROC - Reciprocal, Resp out of County  
 RVC - Relative Child Visits  
 SDC - Legal Separation, Domestic Partnership w/ Children  
 SEC - Legal Separation w/ Children  
 SEP - Legal Separation  
 SPD - Legal Separation, Domestic Partnership /No Children  
 TSS - Structured Settlement

**Jury Trial**

A hearing is reported as a jury trial if the jury is impaneled.

**Juvenile BECCA Cases (case type 7)**

ARY - At Risk Youth  
 CNS - Child In Need Of Services  
 DDP - Developmental Disability  
 DGN - Dependency Guardianship  
 EFC - Extended Foster Care, Dependency  
 GFC - Guardianship Foster Children  
 RPR - Reinstatement of Parental Rights  
 RVS - Relative Visitation  
 TRU - Truancy  
 VYG - Vulnerable Youth Guardianship

**Juvenile Dependency Cases (case type 7)**

DEP - Dependency  
 TER - Termination of Parental Rights

**Juvenile Offender Cases (case type 8)**

Homicide  
 Sex Crime  
 Robbery  
 Assault  
 Theft/Burglary  
 Motor Vehicle Theft  
 Controlled Substance  
 Others

**Involuntary Treatment Act Cases (case type 6)**

Alcoholic Treatment (ALT)  
 ITA - Adult (MI)  
 ITA - Family (MIF)  
 ITA - Juvenile (MIJ)

**Non-Jury Trial**

A hearing is reported as a non-jury trial if an opening statement is made, waived, or reserved.

**Pending Case**

A case is defined as pending if it is unresolved and active (not in suspense).

**Post-disposition Modifications**

Petition to modify parenting plan after the resolution of the original case, based on the modification schedule.

**Probate and Guardianship Cases (case type 5)**

ABS - Absentee  
 AOS - Affidavit of Successor  
 ASE - Affidavit of Small Estate  
 DSC - Disclaimer  
 EST - Estate  
 FNW - Foreign Will  
 G/E - Guardianship/Estate  
 GDE - Guardianship of the Estate  
 GDN - Guardianship  
 GDP - Guardianship of the Person  
 LGD - Limited Guardianship  
 LGE - Limited Guardianship of the Estate  
 LGP - Limited Guardianship of the Person  
 MGD - Minor Guardianship  
 MSC - Miscellaneous  
 MST - Minor Settlement  
 NJB - Non Judicial Binding/TEDRA Agreement  
 NNC - Non Probate Notice to Creditor  
 POA - Petition for Relief (RCW 11.94) /Power of Attorney  
 RGR - Registration of Guardianship  
 RTR - Registration of Trust /Trust Situs  
 SNT - Special Needs Trust  
 TDR - Trust/Estate Dispute Resolution  
 TRS - Trust  
 WLL - Will Only

**Resolution**

A case is resolved if all issues in the complaint are fully adjudicated.

**Suspended Case**

A case is placed in suspense status from active status during the reporting period.

**Suspense Status**

A case is on suspense status if it is on warrant, appeal, stay, mediation, arbitration (“Deferred Prosecution” is not a suspense status, but is treated as a resolution).

**Trial**

A hearing set before a judge or jury in which all the issues in the case are meant to be resolved. A trial normally includes opening statements to the court or jury stating what evidence will show, introduction of witnesses and exhibits for direct and cross examination, final arguments to the court or jury in which counsel argue both the evidence and the law, and judgment by the court or jury stating what the facts of the case are and what law applies to the facts. In a jury case, it also includes the selection of the jury. A trial can be held for one or more cases. A single trial may be held to adjudicate more than one case (as defined above).