



King County

Department of Judicial Administration

Barbara Miner

Director and Superior Court Clerk

(206) 296-9300 (206) 296-0100 TTY/TDD

King County Superior Court

Quarterly Statistical Report

Fourth Quarter 2020

Department of Judicial Administration

Prepared by: Shiquan Liao, Ph.D., Statistician

January 15, 2021

Report #: QTR-2020-04

Seattle:

516 Third Avenue Room E609
Seattle, WA 98104-2386

Regional Justice Center:

401 Fourth Avenue North Room 2C
Kent, WA 98032-4429

Juvenile Division:

1211 East Alder Room 3015
Seattle, WA 98122-5598

Quarterly Report Summary

King County Superior Court

NOTE: Washington State Supreme Court orders related to the coronavirus pandemic, beginning March 2020, affect the statistics for the foreseeable future.

Highlights

- **Criminal Cases** -- The criminal filings in 2020 were lower than that in 2019, with an 11% decrease. The criminal filings (excluding RALJ) in 2020 were 5,877 cases. MRJC accounted for 43% of the total criminal filings in the court. The resolutions of criminal cases in 2020 were 4,085 cases, significantly lower than the filing volume in the same time period. The pending criminal caseload at the end of 2020 was 6,083 cases (excluding RALJ). Of the 6,083 pending criminal cases, 41% were the MRJC cases. **The increase in pending criminal caseload is primarily due to the COVID-19 pandemic causing the court to suspend trials, to issue many fewer bench warrants and to postpone jury trials, thus keeping these cases in pending active status.**
- **Civil Cases**. Filings in general civil cases (case type 2) in 2020 were significantly lower than that in 2019 (-28%) because of COV-19. The civil resolutions were low in the same time period, slightly lower than the filing volume. The pending civil caseload were 7,778 cases at the end of 2020, the lowest volume in three years. MRJC had 35% of the civil pending caseload at the end of 2020.
- **Domestic Cases**. Domestic case (case type 3) filings in 2020 were also significantly lower than that in 2019 (-15%), totaling 6,163 cases in 2020. The resolutions of domestic cases lagged slightly behind the filing volume in the same time period. The pending domestic caseload was 4,445 cases at the end of 2020, a normal pending volume with 41% being the MRJC cases.
- **ITA Cases**. The filings of ITA cases in 2020 increased slightly from that in 2019 (+3%) and reached a historical high, totaling 5,131 cases. However, the filing of ITA cases showed a flatter pattern after sharp increases in previous years. The pending ITA caseload at the end of 2020 was 321 cases.
- **Juvenile Dependency/Termination (DEP/TER) and At-risk Youth (ARY)/Child-in-Need of Service (CHINS) Cases**. In 2020, the filing volume in juvenile related cases showed a decreasing pattern when compared to that in 2019 in most categories: dependency filings down 46% (-46%), truancy filings down 71% (-71%), ARY/CHINS/Other filings down 9% (-9%), while termination filings up by 29% (+29%). At the end of 2020, there were 565 dependency cases, 382 termination cases, and 71 ARY/CHINS/Other cases pending resolution.
- **Juvenile Offender Cases**. The juvenile offender filings in 2020 were 788 cases, a 30% decrease from 2019 (-30%). The resolution pace for juvenile offender exceeded the filing pace in the same time period. At the end 2020, there were 572 juvenile offender pending cases.
- **Pro Tem Use**. In the four quarters of 2020, the daily Pro Tem use by the court was 2.5, 0.8, 2.3, and 5.1 FTEs, a low volume except in the 4th quarter.
- **Post-resolution Modifications (Table 1-A)**. In 2020, there were 575 post-resolution modifications filed (both parenting plan and relocation modifications).

Table 1. Year-to-Date Filing Activity

King County Superior Court

Reporting Category	Year-to-Date and Annual Filing Activity ⁽¹⁾					2019-2020 change (+ means "increase")		% of 2020 Total Filing ⁽²⁾
	2016	2017	2018	2019	2020	Cases	Percentage	
Total (incl. RALJ)								
Year-to-Date Filing	51472	53115	53835	52889	43103	-9786	-19%	
Annual Filing	51472	53115	53835	52889				
Criminal (excl. RALJ)								
Year-to-Date Filing	6632	6441	5989	6607	5877	-730	-11%	13.6%
Annual Filing	6632	6441	5989	6607				
Civil (excl. RALJ)								
Year-to-Date Filing	21222	21517	22217	21202	15352	-5850	-28%	35.6%
Annual Filing	21222	21517	22217	21202				
Domestic								
Year-to-Date Filing	7512	7597	7640	7280	6163	-1117	-15%	14.3%
Annual Filing	7512	7597	7640	7280				
Probate								
Year-to-Date Filing	6073	6418	6382	6804	6766	-38	-1%	15.7%
Annual Filing	6073	6418	6382	6804				
Guardianship								
Year-to-Date Filing	1008	949	977	706	725	+19	+3%	1.7%
Annual Filing	1008	949	977	706				
Adoption								
Year-to-Date Filing	458	546	445	483	431	-52	-11%	1.0%
Annual Filing	458	546	445	483				
Parentage								
Year-to-Date Filing	528	539	512	526	340	-186	-35%	0.8%
Annual Filing	528	539	512	526				
ITA – Civil Commitment								
Year-to-Date Filing	4152	4694	4910	4985	5131	+146	+3%	11.9%
Annual Filing	4152	4694	4910	4985				
Juvenile Dependency (DEP)								
Year-to-Date Filing	727	793	787	811	435	-376	-46%	1.1%
Annual Filing	727	793	787	811				
Juvenile Termination (TER)								
Year-to-Date Filing	219	304	344	225	291	+66	+29%	0.7%
Annual Filing	219	304	344	225				
Juvenile ARY/CHINS/OTHERS								
Year-to-Date Filing	247	245	293	206	187	-19	-9%	0.3%
Annual Filing	247	245	293	206				
Juvenile Truancy								
Year-to-Date Filing	1222	1547	1925	1706	501	-1205	-71%	1.2%
Annual Filing	1222	1547	1925	1706				
Juvenile Offender								
Year-to-Date Filing	1295	1324	1229	1121	788	-333	-30%	1.8%
Annual Filing	1295	1324	1229	1121				
Criminal RALJ								
Year-to-Date Filing	111	136	117	146	63	-83	-57%	0.2%
Annual Filing	111	136	117	146				
Civil RALJ								
Year-to-Date Filing	66	65	68	81	53	-28	-35%	0.1%
Annual Filing	66	65	68	81				
Matters Filed with Clerk ⁽³⁾								
Year-to-Date Filing	8742	10903	9036	10030	2784	-7246	-72%	
Annual Filing	8742	10903	9036	10030				

(1) New filings only (based on filing date).

(2) New filings of each reporting category as percentage of "Year-to-Date Filing".

(3) "Matters Filed with Clerk" not included in the "Total".

Chart 1-A. Quarterly Filing Activity
Total Judicial Cases Only ("Matters Filed with Clerk" excluded)

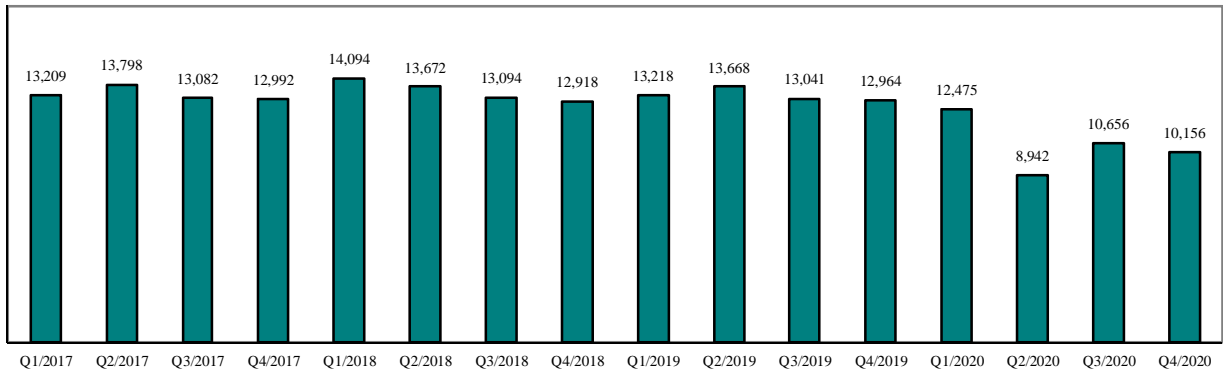
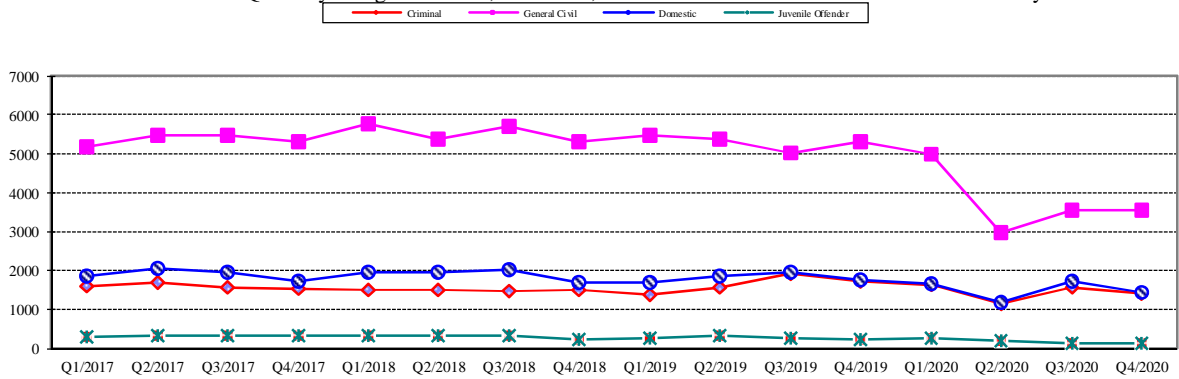


Chart 1-B. Quarterly Filings: Criminal, Domestic, General Civil and Juvenile Offender Cases Only



* Note: "General Civil" is specifically defined in this report. The category of "General Civil" does **not** include the following case types: domestic, probate, guardianship, adoption, Parentage, ITA (civil commitment), juvenile cases (dependency, at-risk youth, child-in-need of service, civil RALJ, and tax filings that don't require judicial resources ("matters filed with clerk"). Please check the Appendix for the cause codes in the "General Civil" category.

Table 1-A. Post-Resolution Modifications Filed (Domestic and Parentage Cases)

		2018Q1			2018Q2			2018Q3			2018Q4			Year 2018		
Location	Case Type	DMOD	DTBA	Total	DMOD	DTBA	Total	DMOD	DTBA	Total	DMOD	DTBA	Total	DMOD	DTBA	Total
KNT	Domestic	207	25	232	193	50	243	168	33	201	134	22	156	702	130	832
	Parentage	15	3	18	11	6	17	16	3	19	8	1	9	50	13	63
KNT Total		222	28	250	204	56	260	184	36	220	142	23	165	752	143	895
SEA	Domestic	172	51	223	182	82	264	130	43	173	120	45	165	604	221	825
	Parentage	11	2	13	5	4	9	9	3	12	10	2	12	35	11	46
SEA Total		183	53	236	187	86	273	139	46	185	130	47	177	639	232	871
KNT/SEA Total		405	81	486	391	142	533	323	82	405	272	70	342	1391	375	1766
		2019Q1			2019Q2			2019Q3			2019Q4			Year 2019		
Location	Case Type	Relocation	Parent Mod	Total	Relocation	Parent Mod	Total	Relocation	Parent Mod	Total	Relocation	Parent Mod	Total	Relocation	Parent Mod	Total
KNT	Domestic	6	66	72	15	53	68	18	64	82	5	60	65	44	243	287
	Parentage	0	11	11	0	9	9	1	14	15	0	15	15	1	49	50
KNT Total		6	77	83	15	62	77	19	78	97	5	75	80	45	292	337
SEA	Domestic	15	80	95	24	78	102	23	78	101	8	70	78	70	306	376
	Parentage	1	13	14	0	11	11	2	7	9	0	6	6	3	37	40
SEA Total		16	93	109	24	89	113	25	85	110	8	76	84	73	343	416
KNT/SEA Total		22	170	192	39	151	190	44	163	207	13	151	164	118	635	753
		2020Q1			2020Q2			2020Q3			2020Q4			Year 2020 (YTD)		
Location	Case Type	Relocation	Parent Mod	Total	Relocation	Parent Mod	Total	Relocation	Parent Mod	Total	Relocation	Parent Mod	Total	Relocation	Parent Mod	Total
KNT	Domestic	5	59	64	11	39	50	14	42	56	9	50	59	39	190	229
	Parentage	1	11	12	1	2	3	0	11	11	1	2	3	3	26	29
KNT Total		6	70	76	12	41	53	14	53	67	10	52	62	42	216	258
SEA	Domestic	17	69	86	19	42	61	26	55	81	20	52	72	82	218	300
	Parentage	1	7	8	1	2	3	1	3	4	0	2	2	3	14	17
SEA Total		18	76	94	20	44	64	27	58	85	20	54	74	85	232	317
KNT/SEA Total		24	146	170	32	85	117	41	111	152	30	106	136	127	448	575
1) Prior to 2019, both parenting and support modifications were included; 2) Starting 2019, only parenting modification and relocation are included.																

Table 2. Number of Cases Resolved and Resolution Category (%)

King County Superior Court

Reporting Category	Q1/19	Q2/19	Q3/19	Q4/19	Q1/20	Q2/20	Q3/20	Q4/20
Total Resolutions (excl. "Matters Filed with Clerk")	12414	13168	13115	13083	11629	8047	10374	10416
Criminal (excl. RALJ): # Resolved	1373	1439	1519	1457	1427	574	976	1015
Resolved by Jury Trial	2.6%	3.5%	2.1%	3.6%	2.6%	0.2%	0.6%	1.3%
Resolved by Non-Jury Trial	0.3%	0.5%	0.3%	0.4%	1.0%	1.7%	0.8%	0.6%
Resolved by Guilty Plea	77.9%	78.4%	78.1%	74.0%	72.0%	67.4%	69.5%	72.6%
Dismissal	18.6%	16.7%	19.4%	21.8%	24.2%	30.7%	29.1%	25.4%
Others	0.6%	0.8%	0.2%	0.2%	0.2%	0.0%	0.0%	0.1%
Civil: # Resolved	5093	5346	5391	5559	4671	2708	3608	3515
Resolved by Jury Trial	0.3%	0.5%	0.4%	0.3%	0.2%	0.0%	0.2%	0.2%
Resolved by Non-Jury Trial	0.2%	0.3%	0.5%	0.3%	0.1%	0.1%	0.1%	0.1%
Summary Judgment	1.4%	1.9%	2.2%	1.4%	1.3%	1.0%	1.2%	1.3%
Default/ Uncontested	30.5%	30.4%	29.8%	30.1%	32.3%	39.1%	40.8%	38.2%
Arbitration	3.8%	3.5%	3.3%	3.3%	3.2%	5.4%	6.3%	5.8%
Settlement/Dismissal	63.0%	59.2%	61.7%	60.0%	60.3%	53.3%	49.6%	53.0%
Closure by Clerk	0.0%	3.2%	1.2%	3.7%	1.8%	0.0%	0.6%	0.3%
Others	0.9%	0.9%	0.8%	0.9%	0.8%	1.1%	1.1%	1.1%
Domestic: # Resolved	1564	1912	1903	1916	1507	1135	1405	1750
Resolved by Trial	3.2%	3.2%	2.8%	4.1%	3.1%	1.0%	2.9%	4.1%
Default/ Uncontested	9.3%	8.5%	8.9%	8.4%	9.6%	6.7%	9.0%	8.6%
Settlement /Dismissal	87.0%	87.3%	88.1%	86.3%	86.7%	92.2%	87.9%	86.8%
Closure by Clerk	0.0%	0.4%	0.1%	0.8%	0.3%	0.0%	0.1%	0.1%
Others	0.5%	0.5%	0.1%	0.4%	0.3%	0.2%	0.1%	0.3%
Probate: # Resolved	1762	1808	1622	1572	1534	1508	1634	1621
Personal Rep. Appointed	68.2%	71.8%	68.0%	67.7%	69.0%	73.2%	70.9%	70.8%
Dismissal	6.6%	6.2%	7.0%	7.8%	5.4%	6.2%	6.5%	6.8%
Closure by Clerk	0.0%	0.0%	0.0%	0.0%	0.1%	0.0%	0.0%	0.0%
Others	25.1%	22.0%	25.0%	24.6%	25.5%	20.6%	22.6%	22.5%
Guardianship: # Resolved	165	178	156	157	157	147	172	172
Guardian Appointed	80.6%	87.1%	86.5%	82.2%	80.9%	69.4%	71.5%	83.7%
Dismissal	18.2%	12.4%	11.5%	16.6%	18.5%	28.6%	21.5%	16.3%
Closure by Clerk	0.0%	0.0%	0.0%	0.0%	0.0%	0.0%	4.7%	0.0%
Others	1.2%	0.6%	1.9%	1.3%	0.6%	2.0%	2.3%	0.0%
Adoption: # Resolved	78	131	136	127	79	59	104	107
Resolved by Trial	0.0%	0.8%	0.0%	0.0%	0.0%	0.0%	0.0%	0.0%
Uncontested	12.8%	2.3%	9.6%	3.1%	7.6%	0.0%	3.8%	0.9%
Settlement /Dismissal	87.2%	96.9%	90.4%	96.1%	91.1%	98.3%	96.2%	98.1%
Closure by Clerk	0.0%	0.0%	0.0%	0.8%	0.0%	0.0%	0.0%	0.0%
Others	0.0%	0.0%	0.0%	0.0%	1.3%	1.7%	0.0%	0.9%
Parentage: # Resolved	107	146	129	129	98	27	96	96
Resolved by Trial	0.0%	1.4%	2.3%	0.8%	1.0%	0.0%	0.0%	4.2%
Summary Judgment	50.5%	50.7%	45.0%	44.2%	51.0%	33.3%	58.3%	42.7%
Default/ Uncontested	15.0%	19.2%	18.6%	12.4%	8.2%	3.7%	8.3%	19.8%
Settlement/Dismissal	34.6%	28.8%	34.1%	41.9%	39.8%	63.0%	32.3%	33.3%
Closure by Clerk	0.0%	0.0%	0.0%	0.0%	0.0%	0.0%	0.0%	0.0%
Others	0.0%	0.0%	0.0%	0.8%	0.0%	0.0%	1.0%	0.0%
ITA(civil commitment): # Resolved	1271	1259	1275	1175	1123	1116	1395	1206
Court Decision to Commit	53.5%	52.9%	53.6%	50.2%	47.9%	44.6%	41.9%	35.8%
Closed by Court	0.0%	0.0%	0.0%	0.0%	0.0%	0.0%	0.0%	0.0%
Dismissal	13.6%	12.8%	15.2%	18.6%	14.1%	13.6%	11.0%	10.5%
Others	32.9%	34.3%	31.2%	31.1%	38.0%	41.8%	47.1%	53.6%
Juv. Dependency: # Resolved	201	142	190	155	137	65	152	162
Finding of Dependency	82.6%	85.2%	64.7%	39.4%	48.2%	41.5%	50.0%	69.5%
Dismissal	17.4%	14.8%	34.7%	50.6%	50.4%	58.5%	49.3%	28.7%
Others	0.0%	0.0%	0.5%	0.0%	1.5%	0.0%	0.7%	1.8%

Table 2 (cont.). Number of Cases Resolved and Resolution Category (%)

King County Superior Court

Reporting Category	Q1/19	Q2/19	Q3/19	Q4/19	Q1/20	Q2/20	Q3/20	Q4/20
Juv. Terminations: # Resolved	58	58	34	37	40	15	63	43
Finding of Dependency	79.3%	84.5%	88.2%	64.9%	85.0%	60.0%	81.0%	97.7%
Dismissal	20.7%	15.5%	11.8%	35.1%	15.0%	40.0%	19.0%	2.3%
Others	0.0%	0.0%	0.0%	0.0%	0.0%	0.0%	0.0%	0.0%
ARY/CHINS/OTHER: # Resolved	43	49	50	41	29	14	38	51
Approve of Petition	67.5%	63.2%	42.0%	39.0%	13.7%	28.6%	15.8%	58.7%
Dismissal	32.5%	36.7%	58.0%	61.0%	86.2%	71.4%	68.4%	41.3%
Others	0.0%	0.0%	0.0%	0.0%	0.0%	0.0%	0.0%	0.0%
Juvenile Truancy: # Resolved	386	377	424	445	548	497	424	228
Approve of Petition	7.8%	8.2%	0.2%	0.2%	0.5%	0.2%	0.0%	0.4%
Dismissal	92.2%	91.8%	99.8%	99.8%	99.5%	99.8%	100%	99.6%
Others	0.0%	0.0%	0.0%	0.0%	0.0%	0.0%	0.0%	0.0%
Juvenile Offender: # Resolved	261	278	250	245	232	132	251	191
Resolved by Trial (Fact Finding)	1.5%	0.0%	0.0%	0.0%	2.2%	0.8%	0.4%	0.5%
Resolved by Guilty Plea	41.0%	34.9%	40.8%	39.6%	34.5%	31.3%	24.7%	31.9%
Dismissal	31.0%	41.7%	40.0%	36.9%	43.1%	47.0%	48.6%	48.2%
Deferred Disposition (DDSP)	11.5%	13.7%	14.8%	16.7%	11.2%	15.2%	19.5%	16.2%
Others (including Deferred Prosecution)	14.9%	9.7%	4.4%	4.1%	9.1%	6.1%	6.8%	3.1%
Criminal RALJ: # Resolved	35	32	26	41	22	39	40	26
RALJ Decision	68.6%	75.0%	65.4%	65.9%	86.4%	76.9%	75.0%	84.6
Dismissal	28.6%	18.8%	26.9%	19.5%	13.6%	20.5%	25.0%	11.5
Others	2.9%	6.3%	7.7%	14.6%	0.0%	2.6%	0.0%	3.8
Civil RALJ: # Resolved	17	13	10	27	25	11	16	10
RALJ Decision	52.9%	46.2%	30.0%	37.0%	20.0%	45.5%	50.0%	90.0%
Dismissal	47.1%	53.8%	60.0%	46.1%	28.0%	45.5%	43.8%	0.0%
Others	0.0%	0.0%	10.0%	14.8%	52.0%	9.1%	6.3%	10.0%

Chart 2-A. Quarterly Resolutions
Total Judicial Cases Only ("Matters Filed with Clerk" excluded)

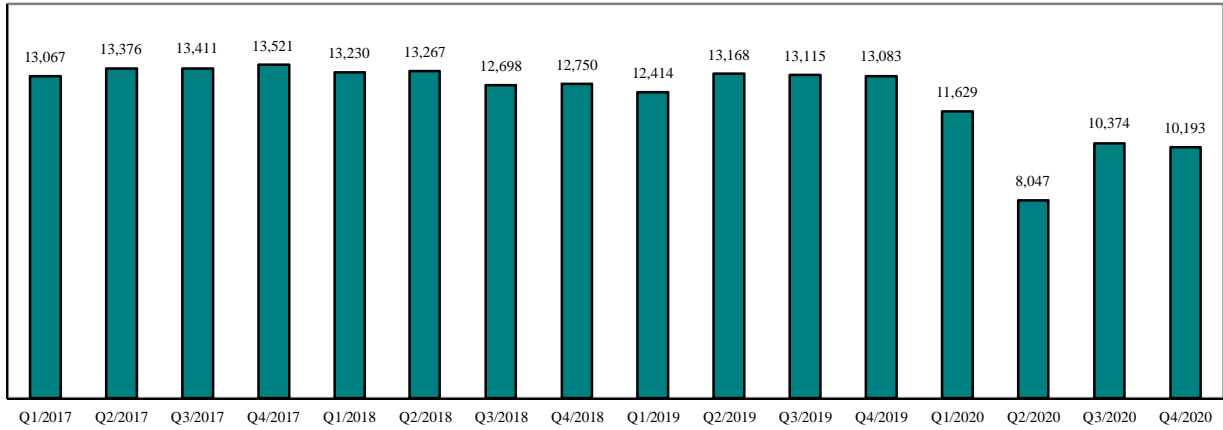
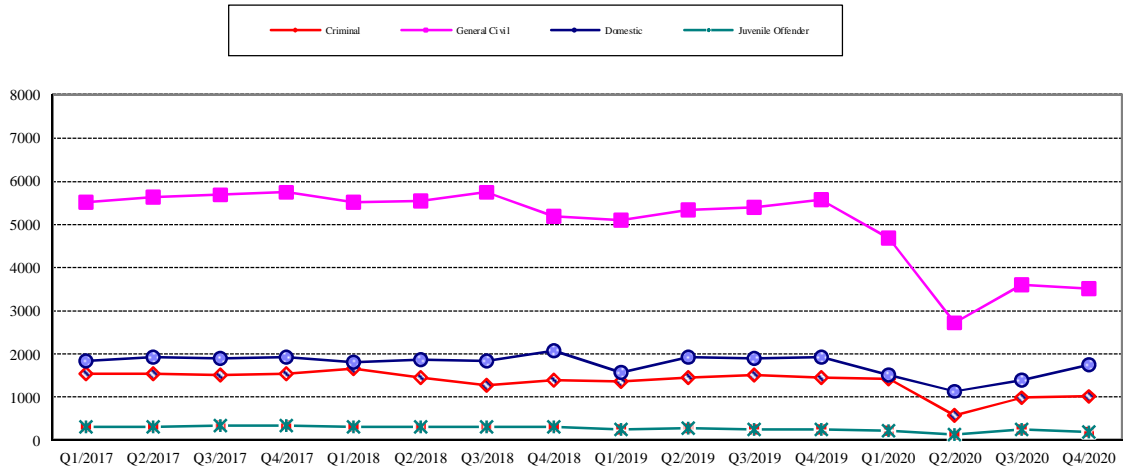


Chart 2-B. Quarterly Resolutions: Criminal, Dmestic, General Civil and Juvenile Offender Cases Only



Note: "General Civil" is specifically defined in this report. The category of "General Civil" does **not** include the following case types: domestic, probate, guardianship, adoption, Parentage, mental illness, juvenile cases (dependency, at-risk youth, child-in-need of service), civil RALJ, and tax filings that don't require judicial resources ("matters filed with clerk"). Please check the Appendix for the cause codes in the "General Civil" category.

Table 3. Age of Resolved Cases
King County Superior Court

Reporting Category	Age of Cases at Resolution							
	Q1/19	Q2/19	Q3/19	Q4/19	Q1/20	Q2/20	Q3/20	Q4/20
Criminal (excl. RALJ)								
Age (days)								
50% Cases Resolved by Day	144	127	109	104	118	112	179	216
90% Cases Resolved by Day	453	454	411	431	435	455	443	470
Comparison with Court Standard of								
90% in 4 months	43%	49%	53%	54%	51%	53%	34%	33%
98% in 6 months	59%	61%	66%	68%	66%	67%	51%	44%
100% in 9 months	76%	76%	79%	80%	80%	79%	70%	64%
Civil (excl. RALJ)								
Age (days)								
50% Cases Resolved by Day	54	58	62	64	42	73	91	88
90% Cases Resolved by Day	365	385	406	399	361	361	386	396
Comparison with Court Standard of								
90% in 12 months	89%	88%	86%	86%	90%	90%	87%	85%
98% in 18 months	99%	97%	95%	94%	97%	98%	97%	96%
100% in 24 months	100%	100%	99%	98%	99%	100%	99%	98%
Domestic								
Age (days)								
50% Cases Resolved by Day	169	190	157	149	153	170	224	213
90% Cases Resolved by Day	386	411	435	400	405	383	442	466
Comparison with Court Standard of								
90% in 8 months	65%	62%	67%	71%	66%	64%	53%	53%
98% in 10 months	76%	74%	75%	79%	75%	77%	66%	68%
100% in 14 months	92%	90%	89%	92%	91%	93%	88%	87%
Probate								
Age (days)								
50% Cases Resolved by Day	0	0	0	0	0	5	4	4
90% Cases Resolved by Day	25	25	30	30	18	30	34	35
Comparison with Court Standard of								
90% in 8 months	97%	97%	97%	98%	98%	99%	99%	98%
98% in 18 months	98%	98%	97%	98%	99%	100%	99%	99%
100% in 36 months	99%	98%	97%	98%	99%	100%	100%	100%
Guardianship								
Age (days)								
50% Cases Resolved by Day	51	54	52	59	52	53	56	52
90% Cases Resolved by Day	161	133	127	163	161	265	458	133
Comparison with Court Standard of								
90% in 8 months	96%	96%	98%	93%	96%	90%	81%	97%
98% in 18 months	100%	99%	99%	98%	99%	94%	93%	100%
100% in 36 months	100%	99%	99%	99%	99%	97%	100%	100%
Adoption								
Age (days)								
50% Cases Resolved by Day	38	30	38	35	36	70	52	40
90% Cases Resolved by Day	262	274	227	156	257	231	230	163
Comparison with Court Standard of								
90% in 8 months	89%	87%	92%	95%	89%	93%	91%	94%
98% in 10 months	92%	92%	95%	98%	94%	97%	94%	95%
100% in 14 months	96%	99%	97%	99%	96%	100%	97%	99%
Parentage								
Age (days)								
50% Cases Resolved by Day	158	164	131	121	152	275	239	246
90% Cases Resolved by Day	298	315	297	316	354	515	362	455
Comparison with Court Standard of								
90% in 8 months	79%	74%	79%	83%	76%	41%	50%	50%
98% in 10 months	93%	88%	90%	89%	87%	67%	81%	75%
100% in 14 months	100%	96%	93%	97%	95%	85%	95%	89%

Table 3 (cont.) Age of Resolved Cases

King County Superior Court

Reporting Category	Age of Cases at Resolution							
	Q1/19	Q2/19	Q3/19	Q4/19	Q1/20	Q2/20	Q3/20	Q4/20
ITA (civil commitment) *								
Age (days)								
50% Cases Resolved by Day	6	6	6	7	9	10	12	13
90% Cases Resolved by Day	59	24	22	27	32	30	53	48
Juvenile Dependency (DEP)								
Age (days)								
50% Cases Resolved by Day	128	105	116	211	198	190	203	245
90% Cases Resolved by Day	321	217	292	1056	618	517	455	636
Comparison with Court Standard of								
90% in 8 months	78%	91%	86%	54%	66%	55%	61%	49%
98% in 10 months	87%	93%	90%	62%	78%	71%	73%	61%
100% in 14 months	93%	94%	94%	73%	86%	77%	85%	75%
Juvenile Termination (TER)								
Age (days)								
50% Cases Resolved by Day	161	171	171	190	83	390	209	126
90% Cases Resolved by Day	467	329	377	375	523	675	560	307
Comparison with Court Standard of								
90% in 8 months	64%	72%	74%	63%	80%	27%	60%	61%
98% in 10 months	81%	90%	80%	71%	80%	40%	71%	88%
100% in 14 months	87%	95%	95%	98%	83%	67%	84%	93%
Juv ARY/CHINS/OTHER								
Age (days)								
50% Cases Resolved by Day	30	30	41	50	66	89	222	36
90% Cases Resolved by Day	119	226	230	238	251	224	362	339
Comparison with Court Standard of								
90% in 8 months	100%	96%	92%	91%	86%	93%	66%	80%
98% in 10 months	100%	98%	96%	93%	100%	93%	76%	87%
100% in 14 months	100%	100%	98%	95%	100%	93%	97%	91%
Juvenile Truancy*								
Age (days)								
50% Cases Resolved by Day	366	378	468	327	406	489	521	383
90% Cases Resolved by Day	544	623	616	700	1112	919	826	601
Juvenile Offender								
Age (days)								
50% Cases Resolved by Day	122	116	140	140	133	147	204	230
90% Cases Resolved by Day	285	345	307	385	331	330	461	489
Comparison with Court Standard of								
90% in 4 months	49%	52%	43%	47%	47%	45%	24%	18%
98% in 6 months	68%	68%	66%	65%	54%	59%	39%	40%
100% in 9 months	88%	84%	84%	84%	82%	76%	68%	59%
Criminal RALJ								
Age (days)								
50% Cases Resolved by Day	364	233	216	302	331	314	280	316
90% Cases Resolved by Day	588	493	500	716	490	632	486	703
Civil RALJ								
Age (days)								
50% Cases Resolved by Day	194	166	167	171	108	182	189	264
90% Cases Resolved by Day	291	259	210	324	323	250	301	359

* No standard yet.

Table 4. Active Pending Caseload Statistics
King County Superior Court

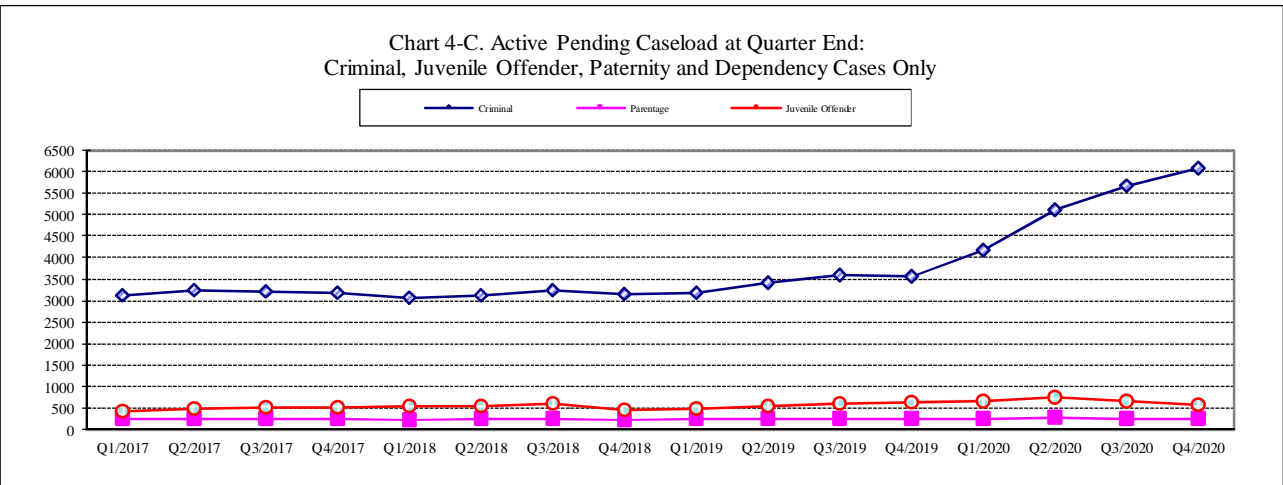
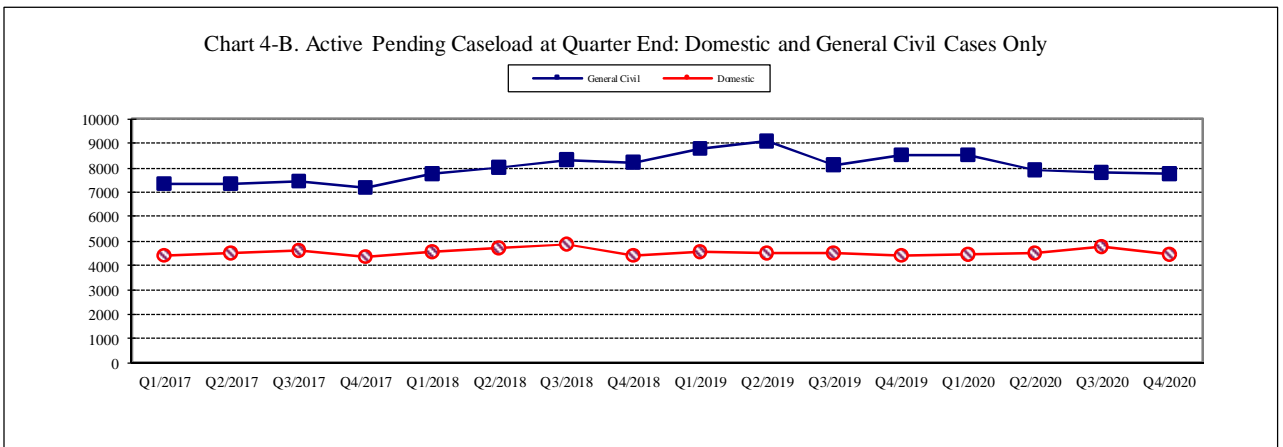
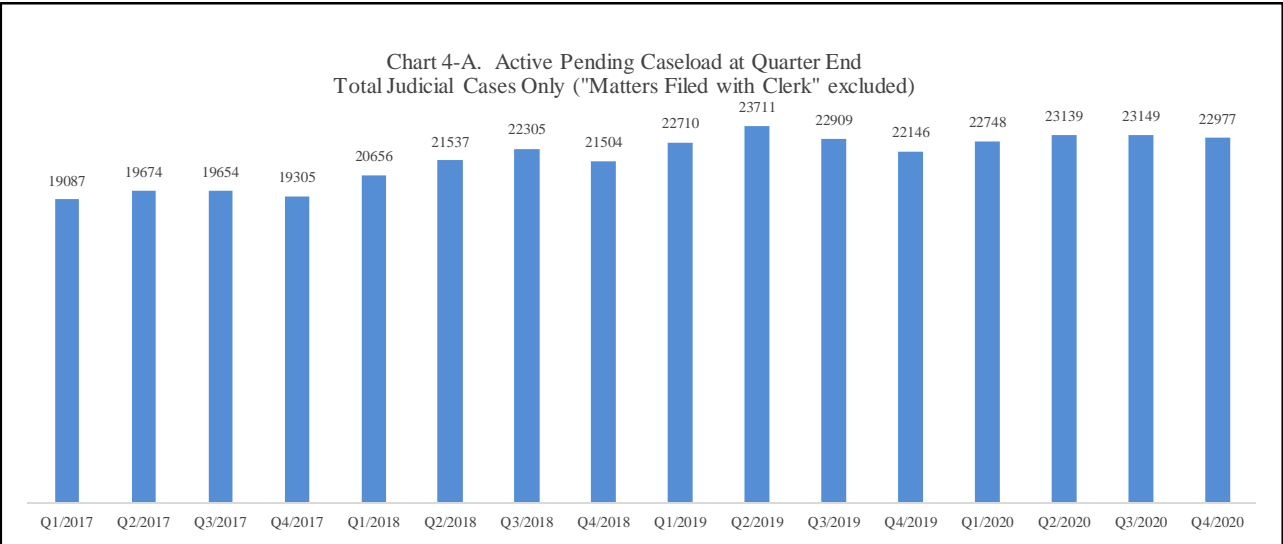
Reporting Category		Q1/19	Q2/19	Q3/19	Q4/19	Q1/20	Q2/20	Q3/20	Q4/20
Total (incl. RALJ)									
Previous Pending	(+)	12750	12414	13168	13115	22146	22746	23139	23149
New Filing	(+)	13218	13666	13041	12964	12475	8942	10656	10156
Resolved	(-)	12414	13168	13115	13083	11629	8047	10374	10193
End Pending		22710	23711	22909	22146	22748	23139	23149	22977
Resolution Rate*		0.939	0.964	1.006	1.009	0.932	0.900	0.974	1.004
Criminal (excl. RALJ)									
Previous Pending	(+)	3150	3176	3420	3579	3564	4188	5113	5659
New Filing	(+)	1362	1575	1928	1742	1628	1149	1579	1400
Resolved	(-)	1373	1439	1519	1457	1427	574	976	1015
End Pending		3176	3420	3579	3564	4188	5113	5659	6083
Resolution Rate*		1.008	0.914	0.788	0.836	0.877	0.500	0.618	0.725
Civil (excl. RALJ)									
Previous Pending	(+)	8243	8813	9135	8152	8576	8515	7900	7821
New Filing	(+)	5480	5373	5031	5318	4981	2959	3571	3551
Resolved	(-)	5093	5346	5391	5559	4671	2708	3608	3515
End Pending		8813	9135	8152	8576	8515	7900	7821	7778
Resolution Rate*		0.929	0.995	1.072	1.045	0.938	0.915	1.010	0.990
Domestic									
Previous Pending	(+)	4381	4529	4478	4516	4384	4431	4511	4773
New Filing	(+)	1697	1863	1956	1764	1682	1179	1728	1438
Resolved	(-)	1564	1912	1903	1916	1507	1135	1405	1750
End Pending		4529	4478	4516	4384	4431	4511	4773	4445
Resolution Rate*		0.922	1.026	0.973	1.086	0.896	0.963	0.813	1.217
Probate									
Previous Pending	(+)	1146	1235	1476	1545	690	778	869	923
New Filing	(+)	1762	1820	1621	1601	1622	1613	1690	1702
Resolved	(-)	1762	1808	1622	1572	1534	1508	1634	1621
End Pending		1235	1476	1545	690	778	869	923	1023
Resolution Rate*		1.000	0.993	1.001	0.982	0.946	0.935	0.967	0.952
Guardianship									
Previous Pending	(+)	409	509	377	429	235	240	285	281
New Filing	(+)	200	170	189	147	180	175	174	179
Resolved	(-)	165	178	156	157	157	147	172	172
End Pending		509	377	429	235	240	285	281	290
Resolution Rate*		0.825	1.047	0.825	1.068	0.872	0.840	0.989	0.961
Adoption									
Previous Pending	(+)	174	197	205	196	184	220	234	237
New Filing	(+)	97	139	133	114	119	74	101	132
Resolved	(-)	78	131	136	127	79	59	104	107
End Pending		197	205	196	184	220	234	237	258
Resolution Rate*		0.804	0.942	1.023	1.114	0.664	0.797	1.030	0.811
Parentage									
Previous Pending	(+)	225	246	242	253	251	239	268	249
New Filing	(+)	125	140	137	124	101	53	90	94
Resolved	(-)	107	146	129	129	98	27	96	96
End Pending		246	242	253	251	239	268	249	248
Resolution Rate*		0.856	1.043	0.942	1.040	0.970	0.509	1.067	1.021
ITA (civil commitment)									
Previous Pending	(+)	283	206	201	246	288	263	433	315
New Filing	(+)	1192	1254	1320	1219	1155	1267	1369	1225
Resolved	(-)	1271	1259	1275	1175	1123	1116	1395	1206
End Pending		206	201	246	288	263	433	315	321
Resolution Rate*		1.066	1.004	0.966	0.964	0.972	0.881	1.019	0.984

* A value of "Resolution Rate" less than one indicates the resolution pace is slower than the filing pace.

Table 4 (cont.) Active Pending Caseload Statistics
King County Superior Court

Reporting Category	Q1/19	Q2/19	Q3/19	Q4/19	Q1/20	Q2/20	Q3/20	Q4/20
Juvenile Dependency (DEP)								
Previous Pending (+)	434	428	590	587	647	638	692	635
New Filing (+)	199	227	193	192	133	112	99	117
Resolved (-)	201	142	190	155	137	65	152	162
End Pending	428	590	587	647	638	692	635	467
Resolution Rate*	1.010	0.626	0.984	0.807	1.030	0.580	1.535	1.347
Juvenile Termination (TER)								
Previous Pending (+)	244	260	241	248	277	297	332	341
New Filing (+)	74	39	45	67	62	64	68	93
Resolved (-)	58	58	34	37	40	15	63	43
End Pending	260	241	248	277	297	332	341	382
Resolution Rate*	0.784	1.487	0.756	0.552	0.645	0.234	0.926	0.462
Juv ARY/CHINS/OTHERS								
Previous Pending (+)	146	152	86	97	100	119	128	115
New Filing (+)	42	63	57	44	50	22	22	46
Resolved (-)	43	49	50	41	29	14	38	51
End Pending	152	86	97	100	119	128	115	169
Resolution Rate*	1.024	0.778	0.877	0.932	0.580	0.636	1.727	1.179
Juvenile Truancy								
Previous Pending (+)	2041	2313	2556	2244	2112	1976	1484	1042
New Filing (+)	659	620	109	318	448	45	0	8
Resolved (-)	386	377	424	445	548	497	424	228
End Pending	2313	2556	2244	2112	1976	1484	1042	832
Resolution Rate*	0.586	0.608	3.890	1.399	1.223	11.044	NA	28.500
Juvenile Offender								
Previous Pending (+)	464	479	539	614	647	659	758	649
New Filing (+)	276	333	273	239	268	216	147	136
Resolved (-)	261	278	250	245	232	132	251	191
End Pending	479	539	614	647	659	758	649	572
Resolution Rate*	0.946	0.835	0.916	1.025	0.866	0.611	1.707	1.404
Criminal RALJ								
Previous Pending (+)	126	133	129	136	140	147	96	77
New Filing (+)	42	27	33	44	34	6	8	12
Resolved (-)	35	32	26	41	22	39	40	26
End Pending	133	129	136	140	147	96	77	66
Resolution Rate*	0.833	1.185	0.788	0.932	0.647	6.560	5.000	2.167
Civil RALJ								
Previous Pending (+)	38	34	36	47	51	38	36	32
New Filing (+)	11	23	16	31	12	8	10	23
Resolved (-)	17	13	10	27	25	11	16	10
End Pending	34	36	47	51	38	36	32	43
Resolution Rate*	1.545	0.565	0.625	0.871	2.083	1.375	1.600	0.435

* A value of "Resolution Rate" less than one indicates the resolution pace is slower than the filing pace.



Note: "General Civil" is specifically defined in this report. The category of "General Civil" does **not** include the following case types: domestic, probate, guardianship, adoption, Parentage, mental illness, juvenile cases (dependency, at-risk youth, child-in-need of service), civil RALJ, and tax filings that don't require judicial resources ("matters filed with clerk"). Please check the Appendix for the cause codes in the "General Civil" category.

Table 5. Age of Pending Cases

King County Superior Court

Reporting Category	Age of Pending Cases and # of Cases in Each Age Interval							
	Q1/19	Q2/19	Q3/19	Q4/19	Q1/20	Q2/20	Q3/20	Q4/20
Criminal (excl. RALJ): # of Cases	3176	3420	3579	3564	4148	5113	5969	6083
Age (days)								
Median (50 percentile)	135	107	95	105	92	137	178	200
90 percentile	445	418	433	430	365	412	442	486
# of Cases in Age Interval								
0 - 60 days (0 - 2 months)	1023	1232	1330	1169	1710	1188	1179	1159
61 - 120 days (3 - 4 months)	524	592	724	789	747	1039	916	767
121 - 180 days (5 - 6 months)	415	440	390	473	513	856	741	928
181 - 270 days (7 - 9 months)	455	409	409	414	525	840	1214	937
> 270 days (> 9 months)	759	747	726	719	693	1190	1609	2292
Civil (excl. RALJ): # of Cases	8813	9135	8152	8576	8515	7900	7821	7778
Age (days)								
Median (50 percentile)	138	137	158	146	153	179	205	203
90 percentile	426	433	418	399	420	484	539	597
# of Cases in Age Interval								
0 - 120 days (0 - 4 months)	3994	4078	3314	3808	3483	2714	2652	2689
121 - 240 days (5 - 8 months)	2188	2328	2292	2172	2357	2198	1902	1628
241 - 360 days (9 - 12 months)	1263	1436	1430	1464	1388	1359	1523	1408
361 - 540 days (13 - 18 months)	938	830	656	771	891	1067	966	1052
541 - 720 days (19 - 24 months)	275	303	307	202	228	365	508	597
> 720 days (> 24 months)	155	160	173	160	168	197	270	404
Domestic: # of Cases	4529	4478	4516	4384	4431	4511	4773	4445
Age (days)								
Median (50 percentile)	145	118	117	131	144	172	155	155
90 percentile	471	474	460	477	468	511	525	584
# of Cases in Age Interval								
0 - 120 days (0 - 4 months)	2017	2252	2303	2087	1990	1581	2124	1817
121 - 240 days (5 - 8 months)	1188	969	1082	1105	1213	1283	984	1091
241 - 360 days (9 - 12 months)	618	569	476	569	593	784	749	600
361 - 540 days (13 - 18 months)	342	319	289	243	258	448	462	431
> 540 days (> 18 months)	364	369	366	380	377	415	454	506
Probate: # of Cases	1235	1476	1545	690	778	869	923	1023
Age (days)								
Median (50 percentile)	517	517	570	347	298	230	296	295
90 percentile	1648	1612	1672	1640	1623	1574	1631	1618
# of Cases in Age Interval								
0 - 120 days (0 - 4 months)	202	288	247	220	257	311	295	322
121 - 240 days (5 - 8 months)	146	160	173	83	109	132	119	146
241 - 360 days (9 - 12 months)	101	131	164	50	58	69	105	97
361 - 540 days (13 - 18 months)	191	196	162	65	63	68	91	107
> 540 days (> 18 months)	595	701	799	272	291	289	313	351
Guardianship: # of Cases	509	377	429	235	240	285	281	290
Age (days)								
Median (50 percentile)	118	177	241	133	139	125	136	207
90 percentile	650	741	797	881	976	1028	1121	1211
# of Cases in Age Interval								
0 - 120 days (0 - 4 months)	255	125	155	115	115	139	55	116
121 - 240 days (5 - 8 months)	84	117	57	24	32	39	15	45
241 - 360 days (9 - 12 months)	43	32	98	25	8	19	10	48
361 - 540 days (13 - 18 months)	57	27	33	19	28	19	70	8
> 540 days (> 18 months)	70	76	86	52	57	15	55	73

Table 5 (cont.). Age of Pending Cases

King County Superior Court

Reporting Category	Age of Pending Cases and # of Cases in Each Age Interval							
	Q1/19	Q2/19	Q3/19	Q4/19	Q1/20	Q2/20	Q3/20	Q4/20
Adoption: # of Cases	197	205	196	184	220	234	237	258
Age (days)								
Median (50 percentile)	149	159	198	291	225	274	344	339
90 percentile	612	691	795	887	966	1051	1144	1226
# of Cases in Age Interval								
0 - 120 days (0 - 4 months)	83	87	76	53	81	64	73	89
121 - 240 days (5 - 8 months)	44	41	32	30	31	42	29	21
241 - 360 days (9 - 12 months)	23	21	30	22	18	27	20	25
361 - 540 days (13 - 18 months)	13	13	17	30	37	25	27	26
> 540 days (> 18 months)	34	43	41	49	53	29	88	97
Parentage: # of Cases	246	242	253	251	239	268	249	248
Age (days)								
Median (50 percentile)	102	83	94	105	126	171	182	133
90 percentile	306	270	270	300	335	383	433	476
# of Cases in Age Interval								
0 - 120 days (0 - 4 months)	143	156	158	137	117	80	100	108
121 - 240 days (5 - 8 months)	61	57	58	69	75	112	64	57
241 - 360 days (9 - 12 months)	26	11	22	25	29	43	45	34
361 - 540 days (13 - 18 months)	11	13	9	10	12	23	28	32
> 540 days (> 18 months)	5	5	6	10	6	5	12	17
ITA (civil commitment): # of Cases	206	201	246	288	263	433	315	321
Age (days)								
Median (50 percentile)	13	18	14	20	56	53	28	39
90 percentile	220	307	371	420	511	540	206	274
# of Cases in Age Interval								
0 - 120 days (0 - 4 months)	169	149	188	219	179	295	265	258
121 - 240 days (5 - 8 months)	17	24	10	14	27	63	23	27
> 240 days (> 8 months)	20	28	48	55	57	58	27	36
Juv Dependency (DEP): # of Cases	428	590	587	647	638	692	635	467
Age (days)								
Median (50 percentile)	118	150	194	195	242	284	349	372
90 percentile	571	631	713	784	847	916	1009	955
# of Cases in Age Interval								
0 - 60 days (0 - 2 months)	135	139	112	121	84	64	64	72
61 - 120 days (3 - 4 months)	85	106	118	95	88	84	65	47
121 - 180 days (5 - 6 months)	40	76	48	82	86	67	46	32
181 - 270 days (7 - 9 months)	37	75	81	99	88	126	59	47
> 270 days (> 9 months)	131	194	228	250	292	351	401	269
Juv Termination (TER): # of Cases	260	241	248	277	297	332	341	382
Age (days)								
Median (50 percentile)	188	269	329	340	389	320	349	326
90 percentile	555	646	738	809	879	935	1018	1050
# of Cases in Age Interval								
0 - 60 days (0 - 2 months)	47	28	31	46	38	23	46	70
61 - 120 days (3 - 4 months)	40	23	18	30	32	49	26	31
121 - 180 days (5 - 6 months)	37	33	19	21	27	49	42	34
181 - 270 days (7 - 9 months)	45	38	37	15	30	30	39	42
> 270 days (> 9 months)	91	119	143	165	170	181	188	205
ARY/CHINS/OTHER: # of Cases	152	86	97	100	119	128	115	169
Age (days)								
Median (50 percentile)	200	174	132	188	188	240	314	658
90 percentile	632	646	719	811	900	903	996	1178
# of Cases in Age Interval								
0 - 60 days (0 - 2 months)	30	33	28	20	27	16	15	16
61 - 120 days (3 - 4 months)	14	6	19	16	18	13	12	15
121 - 180 days (5 - 6 months)	28	5	7	11	13	25	6	8
181 - 270 days (7 - 9 months)	20	6	5	13	12	14	24	7
> 270 days (> 9 months)	60	36	38	40	49	60	58	120

Table 5 (cont.). Age of Pending Cases

King County Superior Court

Reporting Category	Age of Pending Cases and # of Cases in Each Age Interval							
	Q1/19	Q2/19	Q3/19	Q4/19	Q1/20	Q2/20	Q3/20	Q4/20
Juvenile Truancy: # of Cases	2313	2556	2244	2112	1976	1484	1042	832
Age (days)								
Median (50 percentile)	290	194	251	300	315	321	300	359
90 percentile	688	613	706	769	718	747	575	675
# of Cases in Age Interval								
0 - 60 days (0 - 2 months)	446	419	63	240	290	26	.0	0
61 - 120 days (3 - 4 months)	416	428	248	70	259	108	20	0
121 - 180 days (5 - 6 months)	195	360	342	92	154	332	18	0
181 - 270 days (7 - 9 months)	31	367	585	425	88	250	414	35
> 270 days (> 9 months)	1225	982	1006	1285	1185	768	590	797
Juvenile Offender: # of Cases	479	539	614	647	659	758	649	572
Age (days)								
Median (50 percentile)	116	101	110	144	145	167	211	241
90 percentile	362	355	405	459	475	477	567	665
# of Cases in Age Interval								
0 - 60 days (0 - 2 months)	157	163	173	164	154	143	110	96
61 - 120 days (3 - 4 months)	88	138	151	124	148	138	98	66
121 - 180 days (5 - 6 months)	70	75	108	104	75	129	88	55
181 - 270 days (7 - 9 months)	80	55	71	124	106	107	108	108
> 270 days (> 9 months)	84	108	111	131	176	241	245	247
Criminal RALJ: # of Cases	133	129	136	140	147	96	77	66
Age (days)								
Median (50 percentile)	170	178	212	174	179	209	304	363
90 percentile	592	683	706	609	643	432	1204	1750
# of Cases in Age Interval								
0 - 60 days (0 - 2 months)	25	17	25	30	24	10	6	6
61 - 120 days (3 - 4 months)	28	21	14	28	30	22	5	11
121 - 180 days (5 - 6 months)	16	29	17	15	20	32	2	3
181 - 270 days (7 - 9 months)	23	21	29	16	24	29	18	3
> 270 days (> 9 months)	41	41	51	51	49	10	46	43
Civil RALJ: # of Cases	34	36	47	51	38	36	32	43
Age (days)								
Median (50 percentile)	98	118	108	61	115	183	221	122
90 percentile	289	355	298	239	288	341	434	459
# of Cases in Age Interval								
0 - 60 days (0 - 2 months)	6	8	10	25	9	0	5	12
61 - 120 days (3 - 4 months)	16	10	14	10	14	10	5	9
121 - 180 days (5 - 6 months)	6	8	11	7	6	7	3	9
181 - 270 days (7 - 9 months)	2	6	4	5	5	13	6	0
> 270 days (> 9 months)	4	4	8	4	4	6	13	13

Table 6. Seattle vs. Regional Justice Center (KNT): Filing, Resolution, Pending Caseload (%)

King County Superior Court

	Q4/19		Q1/20		Q2/20		Q3/20		Q4/20	
	SEA	KNT	SEA	KNT	SEA	KNT	SEA	KNT	SEA	KNT
Filings Total <i>(excl. filings with clerk)</i>	64%	36%	63%	37%	71%	29%	68%	32%	67%	33%
Criminal (excl. RALJ)	63%	37%	61%	39%	60%	40%	56%	44%	51%	49%
Civil (excl. RALJ)	55%	45%	54%	46%	62%	38%	60%	40%	61%	39%
Domestic	57%	43%	61%	39%	63%	37%	61%	39%	60%	40%
Probate	71%	29%	73%	27%	75%	25%	72%	28%	74%	26%
Guardianship	67%	33%	64%	36%	61%	39%	68%	32%	65%	35%
Adoption	68%	32%	70%	30%	81%	19%	73%	27%	83%	17%
Parentage	41%	59%	46%	55%	45%	55%	40%	60%	53%	47%
ITA (civil commitment)	100%	0%	100%	0%	100%	0%	100%	0%	100%	0%
Juv. Dependency (DEP)	69%	31%	62%	38%	80%	20%	76%	24%	68%	32%
Juv. Termination (TER)	61%	39%	63%	37%	63%	37%	49%	52%	34%	66%
Juvenile ARY/CHINS/Other	50%	50%	50%	50%	41%	59%	55%	46%	49%	51%
Juvenile Truancy	53%	47%	32%	68%	82%	18%	NA	NA	0%	100%
Juvenile Offender	100%	0%	100%	0%	100%	0%	100%	0%	100%	0%
Criminal RALJ	95%	5%	82%	18%	67%	33%	75%	25%	92%	8%
Civil RALJ	84%	16%	92%	8%	88%	12%	80%	20%	74%	26%
Resolution Total <i>(excl. filings with clerk)</i>	62%	38%	62%	38%	70%	30%	68%	32%	69%	31%
Criminal (excl. RALJ)	58%	42%	58%	42%	59%	41%	59%	41%	63%	37%
Civil (excl. RALJ)	53%	47%	54%	46%	61%	39%	61%	39%	62%	38%
Domestic	59%	41%	58%	42%	63%	37%	61%	39%	60%	40%
Probate	71%	29%	74%	26%	73%	27%	72%	28%	73%	27%
Guardianship	69%	31%	67%	33%	66%	34%	58%	42%	64%	36%
Adoption	69%	31%	65%	35%	78%	22%	68%	32%	92%	8%
Parentage	58%	42%	42%	58%	30%	70%	52%	48%	44%	56%
ITA (civil commitment)	100%	0%	100%	0%	100%	0%	100%	0%	100%	0%
Juv. Dependency (DEP)	61%	39%	69%	31%	65%	35%	62%	38%	58%	42%
Juv. Termination (TER)	59%	41%	58%	43%	87%	13%	62%	38%	54%	47%
Juvenile ARY/CHINS/Other	59%	41%	66%	35%	36%	64%	40%	61%	41%	59%
Juvenile Truancy	41%	59%	51%	49%	62%	38%	40%	60%	52%	48%
Juvenile Offender	100%	0%	100%	0%	100%	0%	100%	0%	100%	0%
Criminal RALJ	88%	12%	82%	18%	77%	23%	93%	8%	89%	12%
Civil RALJ	89%	11%	84%	16%	91%	9%	88%	13%	90%	10%
Pending Total <i>(excl. filings with clerk)</i>	63%	37%	63%	37%	64%	36%	63%	37%	63%	37%
Criminal (excl. RALJ)	60%	40%	62%	38%	62%	38%	61%	39%	59%	41%
Civil (excl. RALJ)	66%	34%	64%	36%	65%	35%	65%	35%	65%	35%
Domestic	58%	42%	59%	41%	59%	41%	59%	41%	59%	41%
Probate	67%	33%	66%	34%	67%	33%	67%	33%	68%	32%
Guardianship	62%	38%	61%	39%	57%	43%	62%	38%	63%	37%
Adoption	66%	34%	69%	31%	71%	30%	73%	27%	71%	30%
Parentage	37%	63%	37%	63%	39%	61%	35%	65%	38%	63%
ITA (civil commitment)	100%	0%	100%	0%	100%	0%	100%	0%	100%	0%
Juv. Dependency (DEP)	60%	40%	59%	41%	61%	39%	63%	37%	64%	36%
Juv. Termination (TER)	64%	36%	65%	35%	66%	34%	63%	37%	57%	43%
Juvenile ARY/CHINS/Other	50%	50%	46%	54%	48%	52%	50%	50%	58%	42%
Juvenile Truancy	54%	46%	50%	50%	47%	53%	49%	51%	48%	52%
Juvenile Offender	100%	0%	100%	0%	100%	0%	100%	0%	100%	0%
Criminal RALJ	89%	11%	88%	12%	92%	8%	90%	10%	91%	9%
Civil RALJ	82%	18%	84%	16%	83%	17%	78%	22%	74%	26%

Table 7. Quarterly Utilization of Pro Tem Judges/Commissioners ⁽¹⁾

Category	Q3/18	Q4/18	Q1/19	Q2/19	Q3/19	Q4/19	Q1/20	Q2/20	Q3/20	Q4/20
Grand Total	1362	1850	1084	2814	1454	2023	1125	346	1045	2316
FTE Equivalent ⁽²⁾	3.0	4.1	2.4	6.3	3.2	4.5	2.5	0.8	2.3	5.1
By Work Type										
Pro Tem Judge	164	274	179	498	248	503	148	71	138	305
Pro Tem Commissioner	1168	1576	905	2316	1206	1520	978	284	907	2011
By Location										
KCCH	731	981	434	1602	632	919	378	197	580	1355
MRJC	294	403	235	579	411	466	331	35	225	543
Juvenile	161	292	323	462	335	456	284	48	184	277
ITA	176	37	93	171	75	182	132	75	56	142
Other	0	136	0	0	0	0	0	0	0	0
By Calendar Type										
Criminal	24	145	10	133	54	145	42	24	63	70
Civil	0	0	0	0	0	0	0	0	0	1
Ex Parte	231	411	200	432	322	476	143	21	144	371
Family Law/Domestic	650	782	429	1377	588	661	482	167	550	1267
Dependency	107	216	184	336	210	196	222	22	158	231
Juvenile Offender	46	57	124	81	95	230	58	27	26	42
BECCA	8	19	16	45	30	30	5	0	0	4
ITA	176	136	93	171	75	182	132	75	56	142
Juvenile Drug Court	0	0	0	0	0	0	0	0	0	0
Family Treatment Court	0	0	0	0	0	0	0	0	0	0
Plea Calendar	111	35	26	205	63	81	43	21	49	182
Status/Non-Compliance	0	0	0	0	0	5	0	0	0	0
Other or Unspecified	9	48	3	34	17	18	0	0	0	7
By Reason										
Vacation Backfill	621	233	121	390	187	345	85	190	96	1072
Medical Backfill	137	1431	835	2144	1151	1475	926	46	852	392
Duty Time	320	15	42	63	32	127	62	69	42	317
Conference Coverage	0	134	86	217	84	76	53	0	83	0
Congestion	57	0	0	0	0	0	0	36	0	429
Vacancy Coverage	124	0	0	0	0	0	0	14	0	63
Other	104	37	0	0	0	0	0	0	0	44

(1) This table is based on the time sheet for compensation

(2) Judge FTE Equivalent = # of hours / [7.5 hours/day * 20 days/month * 3 months] = # of hours/450.

Data for the most current quarter are incomplete at reporting time and will be updated in next quarterly report.

The Pro Tem hours are provided quarterly by the Administrative Services Department of King County Superior Court.

Table 8. Ex Parte and Family Law Hearings and Documents Signed

Ex Parte: Hearings Held and Documents Signed								
	2020Q1		2020Q2		2020Q3		2020Q4	
	Hearings	Documents Signed	Hearings	Documents Signed	Hearings	Documents Signed	Hearings	Documents Signed
KNT (EXP04/05)								
Civil	260	1190	65	312	100	466	120	547
Domestic	360	1364	21	370	40	487	55	640
Probate/Guardianship	220	271	192	64	302	236	305	227
Adoption/Parentage	32	127	6	8	26	59	13	47
Ex Parte Via Clerk (EXP06)		2681		3678		3224		3985
KNT Subtotal	872	5633	284	4432	468	4472	493	5446
SEA (EXP01/02)								
Civil	224	1020	118	703	122	732	186	700
Domestic	252	1789	41	441	81	577	93	578
Probate/Guardianship	542	1440	415	629	625	690	683	755
Adoption/Parentage	37	197	27	47	54	96	81	185
Ex Parte Via Clerk (EXP07)		6440		6358		7476		9015
SEA Total	1055	10886	601	8178	882	8839	1043	10533
KNT/SEA Total	1927	16519	885	12610	1350	13311	1536	15979
FAMILY LAW: Hearings Held and Documents Signed								
	2020Q1		2020Q2		2020Q3		2020Q4	
	Hearings	Documents Signed	Hearings	Documents Signed	Hearings	Documents Signed	Hearings	Documents Signed
KNT (FAM02)								
Civil	556	878	268	605	817	766	917	1057
Domestic	502	1621	40	401	242	680	331	889
Adoption/Parentage	84	488	8	142	73	219	95	342
KNT Subtotal	1142	2987	316	1148	1132	1665	1343	2288
SEA (FAM01)								
Civil	453	726	455	613	394	986	699	846
Domestic	428	1548	49	386	159	689	372	1058
Adoption/Parentage	56	547	2	158	19	265	19	271
SEA Total	937	2821	506	1157	572	1940	1090	2175
KNT/SEA Total	2079	5808	822	2305	1704	3605	2433	4463

Note: Ex Parte via Clerk documents signed include 3 components 1) EPVC e-signed orders; 2) documents signed with a minute; 3) orders signed through the Ex Parte/Family Law judge panel (beginning 2nd quarter 2020 only).

Appendix Glossary and Definition

Active Status

A case is active if it is not on suspense status (see Suspense Status).

Adoption and Parentage Cases (case type 5)

ADP - Adoption
CFI - Confidential Intermediary
CHN - Confidential Change of Name
DIP - Disestablishment of Parentage
MDS - Modification/Support Only
MOD - Modification
MSC - Miscellaneous
OAA - Open Adoption Agreement
PAD - De Facto Parentage
PAG - Pre Birth Establish Parentage Genetic
PAS - Establish Parentage Gestational Surrogacy
PAT - Parentage
PPR - Initial Pre Placement Report
PRC - Parentage Rescission/Challenge
PUR - Parentage (URES/EIFSA)
REL - Relinquishment
ROB - Relocation Objection
TER - Termination of Parental Rights

Case

A case is defined as a filing with an assigned case number.

Civil Cases (case type 2, no RALJ)

ALR - Administrative Law Review
ALRLI - L&I Administrative Law Review
AOD - Assurance of Discontinuance
ASB - Asbestos
ASP - Asbestos Personal Injury
ASW - Asbestos Wrongful Death
BAT - Petition to Appeal/Amend Ballot Title
CAA - Motion to Confirm/Compel Arbitration Award
CHN - Non Confidential Change of Name
COL - Collection
COM - Commercial
CON - Condemnation
CRP - Certificate of Restoration of Opportunity
CRR - Petition for Certificate of Rehabilitation
DOL - Appeal Licensing Revocation
DSF - Notice of Deposit of Surplus Funds from Trustee's Sale of Real Property
DVP - Domestic Violence
ECP - Enforcement of Canadian Protection Order
EOM - Emancipation of Minor
FOR - Foreclosure
FPO - Foreign Protection Order
FVL - Motion to Show Cause /Frustrated Lien
HAR - Unlawful Harassment
HSI - Application for Health & Safety Inspection
INJ - Injunction
IPL - Complaint for Interpleader
LUP - Land Use Petition
MAL - Other Malpractice
MED - Medical Malpractice
MER - Meretricious Relationships
MHA - Malicious Harassment
MSC - Miscellaneous
MST - Minor Settlement
MWP - Minor Work Permit
NJF - Non Judicial Filing
OSS - Petition to Issue Out of State Subpoena
PBC - Petition for Birth Certificate Change
PBJ - Petition for Justification /Bail Bond Company
PCC - Petition for Civil Commitment

PFA - Property Fairness Act
PIN - Personal Injury
PPT - Petition for Perpetuation of Testimony
PRA - Public Records Act
PRG - Property Damage /Gangs
PRP - Property Damage
PVO - Petition for Vehicle Ownership
QTI - Quiet Title
RCV - Petition to Appoint Receiver
RDR - Relief from Duty to Register
RFR - Restoration of Firearms Rights
RRC - Remove Restricted Covenant
SCA - Small Claims Appeal
SDR - School District /Required Action Plan
SER - Subdivision Election Process Law Review
SPC - Seizure of Property From Commission of a Crime
SPR - Seizure of Property Resulting From a Crime
STK - Stalking Protection
SXP - Sexual Assault Protection
TMV - Tort /Motor Vehicle
TSS - Petition for Approval of Transfer of Structured Settlement
TTO - Tort /Other
UND - Unlawful Detainer
VAP - Vulnerable Adult Protection Order
VEP - Voter Election Process Law Review
VVT - Victims of Motor Vehicle Theft /Civil Action
WDE - Wrongful Death
WHC - Writ of Habeas Corpus
WMW - Miscellaneous Writs
WRM - Writ of Mandamus
WRR - Writ of Restitution
WRV - Writ of Review
XRP - Extreme Risk Protection Order

Civil Matters Filed with Clerk (case type 2)

ABJ - Abstract of Judgment
FJU - Foreign Judgment
TAX - Tax Warrants
TRJ - Transcript of Judgment
CFJ - Petition for Order Granting Judgment on Confession of Judgment

Civil RALJ Cases (case type 2)

LCA - Lower Court Appeal /Civil
LCI - Lower Court Appeal /Infractions

Completion

A case is completed if dispositive document is filed with the court following resolution.

Criminal Cases (case type 1, no RALJ)

Adult criminal cases, excluding appeals from courts of limited jurisdiction. This reporting category includes the following crime categories within SCOMIS case type 1:

Homicide
Sex Crime
Robbery
Assault
Theft/Burglary
Motor Vehicle Theft
Controlled Substance
Others

Criminal RALJ Cases (case type 1)

CRJ - Criminal RALJ

Domestic Cases (case type 3)

CIR - Committed Intimate Relationship
CUS - Child Custody
DIC - Dissolution w/ Children
DIN - Dissolution no Children
DIS - Dissolution
DPC - Dissolution of Domestic Partnership w/ Children
DPN - Dissolution of Domestic Partnership /No Children
FJU - Out of State Support Registration /Foreign Judgment
INC - Annulment /Inv of Marriage w/ Children
IND - Annulment /Inv of Domestic Partnership w/ Children
INP - Invalidity, Domestic Partnership
INV - Annulment /Invalidity
MDS - Modification/Support Only
MOD - Modification
MSC - Miscellaneous
MWA - Mandatory Wage Assignment
OSC - Out of State Custody
PPS - Parenting Plan / Child Support
PSO - Petition for Entry of KC Support Order
RCV - Relative Child Visitation
RIC - Reciprocal, Resp in County
ROB - Relocation /Objection
ROC - Reciprocal, Resp out of County
RVC - Relative Child Visits
SDC - Legal Separation, Domestic Partnership w/ Children
SEC - Legal Separation w/ Children
SEP - Legal Separation
SPD - Legal Separation, Domestic Partnership /No Children
TSS - Structured Settlement

Jury Trial

A hearing is reported as a jury trial if the jury is impaneled.

Juvenile BECCA Cases (case type 7)

ARY - At Risk Youth
CNS - Child In Need Of Services
DDP - Developmental Disability
DGN - Dependency Guardianship
EFC - Extended Foster Care, Dependency
GFC - Guardianship Foster Children
RPR - Reinstatement of Parental Rights
RVS - Relative Visitation
TRU - Truancy
VYG - Vulnerable Youth Guardianship

Juvenile Dependency Cases (case type 7)

DEP - Dependency
TER - Termination of Parental Rights

Juvenile Offender Cases (case type 8)

Homicide
Sex Crime
Robbery
Assault
Theft/Burglary
Motor Vehicle Theft
Controlled Substance
Others

Involuntary Treatment Act Cases (case type 6)

Alcoholic Treatment (ALT)
ITA - Adult (MI)
ITA - Family (MIF)
ITA - Juvenile (MIJ)

Non-Jury Trial

A hearing is reported as a non-jury trial if an opening statement is made, waived, or reserved.

Pending Case

A case is defined as pending if it is unresolved and active (not in suspense).

Post-disposition Modifications

Petition to modify parenting plan after the resolution of the original case, based on the modification schedule.

Probate and Guardianship Cases (case type 5)

ABS - Absentee
AOS - Affidavit of Successor
ASE - Affidavit of Small Estate
DSC - Disclaimer
EST - Estate
FNW - Foreign Will
G/E - Guardianship/Estate
GDE - Guardianship of the Estate
GDN - Guardianship
GDP - Guardianship of the Person
LGD - Limited Guardianship
LGE - Limited Guardianship of the Estate
LGP - Limited Guardianship of the Person
MGD - Minor Guardianship
MSC - Miscellaneous
MST - Minor Settlement
NJB - Non Judicial Binding/TEDRA Agreement
NNC - Non Probate Notice to Creditor
POA - Petition for Relief (RCW 11.94) /Power of Attorney
RGR - Registration of Guardianship
RTR - Registration of Trust /Trust Situs
SNT - Special Needs Trust
TDR - Trust/Estate Dispute Resolution
TRS - Trust
WLL - Will Only

Resolution

A case is resolved if all issues in the complaint are fully adjudicated.

Suspended Case

A case is placed in suspense status from active status during the reporting period.

Suspense Status

A case is on suspense status if it is on warrant, appeal, stay, mediation, arbitration ("Deferred Prosecution" is not a suspense status, but is treated as a resolution).

Trial

A hearing set before a judge or jury in which all the issues in the case are meant to be resolved. A trial normally includes opening statements to the court or jury stating what evidence will show, introduction of witnesses and exhibits for direct and cross examination, final arguments to the court or jury in which counsel argue both the evidence and the law, and judgment by the court or jury stating what the facts of the case are and what law applies to the facts. In a jury case, it also includes the selection of the jury. A trial can be held for one or more cases. A single trial may be held to adjudicate more than one case (as defined above).