

King County Superior Court at Meydenbauer Center

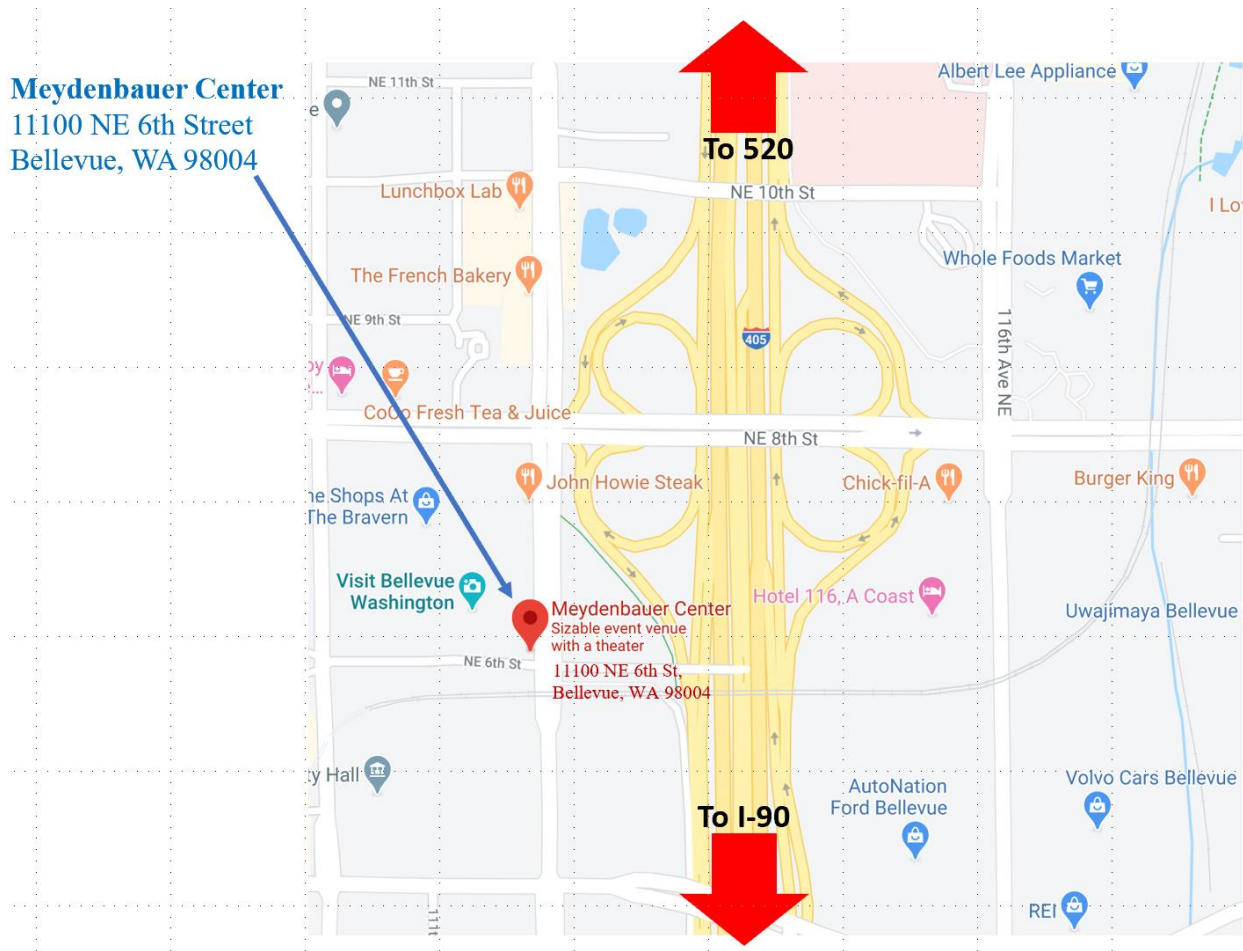
Welcome to our first Pop-Up courthouse! Your commitment and flexibility are keeping justice moving forward in King County. Here is what you need to know about participating in jury trials at Meydenbauer Center in Bellevue.

Getting Here

By Transit: The Bellevue Transit Center, 10850 NE 6th Street, is a 3-minute walk from Meydenbauer Center via NE 4th Street. It is served by numerous routes from around King County. For more information, see

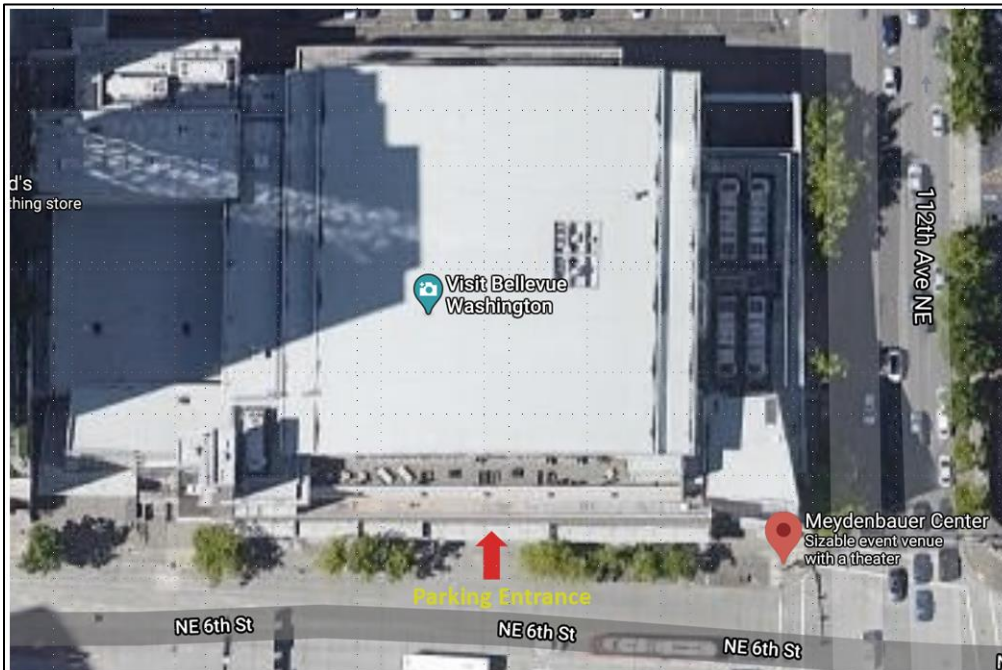
<https://kingcounty.gov/depts/transportation/metro/schedules-maps/maps/boarding/bellevue-tc.aspx>

Meydenbauer Center in downtown Bellevue is conveniently accessible from Interstate 405 which runs north and south through Bellevue. In addition it is served by Interstate 90 to the south and State Route 520 to the north. Downtown Bellevue is just 10 miles east of downtown Seattle and 17 miles from Sea-Tac International Airport. The most convenient off-ramp from I-405 is at NE 4th Street (Exit 13A). There is an HOV/Carpool exit at NE 6th Street from I-405 that exits directly to Meydenbauer Center.



Parking/ADA access: Court employees, and jurors will be allowed to park onsite for free. One parking validation/voucher per day per person will be issued by Court Administration staff in Room 303. Bailiffs will provide them to jurors. Attorneys and litigants must pay for parking. Parking rates are available at <https://www.meydenbauer.com/convention-center/attendees/directions-parking/main-parking/>

From the garage or street, go to the First Floor, and enter via the Security Screening station. All who are entering must go through Security. Please note that weapons and hazardous materials are prohibited.



Meydenbauer Parking

Parking is available in any spot in the parking garage except for those marked “Reserved” on the first level of parking. Vehicles over 6’ 9” will need to find offsite parking. A surface lot is located on the corner of NE 8th Street and 110th Ave NE.

ADA Parking: Meydenbauer Center’s garage has a total of nine disabled parking stalls, several on each floor of the garage located in close proximity to the building elevators. Two ADA parking stalls are reserved next door at the Bravern for over height vehicles. Access to the facility from these over height stalls will need to be coordinated with Meydenbauer Center security. Please contact them at 425-766-7496 to coordinate your arrival.

Exiting the parking garage and using the parking validation tickets when exiting: Prior to exiting the facility, obtain a yellow parking validation ticket from Court Administration in room 303. When leaving the garage, insert the blue parking ticket in first and the yellow parking ticket second to validate parking. Once the yellow ticket has been processed, the exit gate will be lifted.



Cleaning and sanitizing See page 5-6.

Coffee/Concessions There is a coffee cart on the 4th floor. Some food items are also available for purchase.

Emergency exits/defibrillators See map on page 5.

First Aid: Each floor of the building has a first aid kit. Call the event duty on manager 425-637-1020.

Food See map on page 7 for nearby food options, in addition to the Concessions inside Meydenbauer.

Hand sanitizing stations will be dispersed throughout the facility and outside every courtroom.

HVAC See page 5.

Lost and Found Call 425-450-3790 for Meydenbauer Center Lost and Found.

Masks/facial coverings are required. Free disposable masks are available at building entrances and in Room 303.

Restrooms There are restrooms on every floor. See map on page 7. If you are able, consider using a restroom on another floor to facilitate physical distancing.

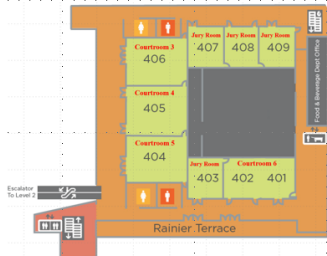
Security Call (206) 296-5000.

Terrace Rainer Terrace, located outside of the fourth floor, is available for all to use. See map on page 6.

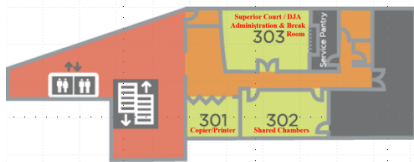
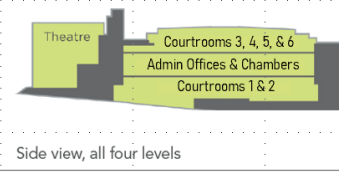
Water dispensers and disposable cups will be provided in courtrooms and jury rooms.

Wellness Room is located on the fourth floor between Rooms 403 and Room 404. This space contains two lounge chairs, a small table, a mini fridge and power. Jurors should contact the bailiff for access.

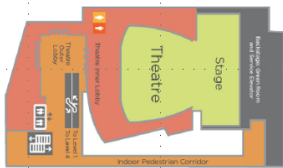
MEYDENBAUER CENTER: FACILITIES SUMMARY



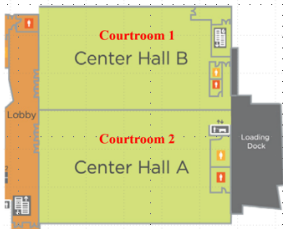
Level 4
 Courtrooms 3, 4, 5 & 6
 Jury Rooms 3, 4, 5, & 6



Level 3
 Superior Court & DJA Administration
 Judge's Chambers
 Copier, scanner & office supplies



Level 2
 Theatre - Not Leased For Court Use



Level 1
 Courtrooms 1 & 2
 Jury Rooms 1 & 2

COVID-19 CLEANING, SANITATION, AND HVAC PROTOCOLS

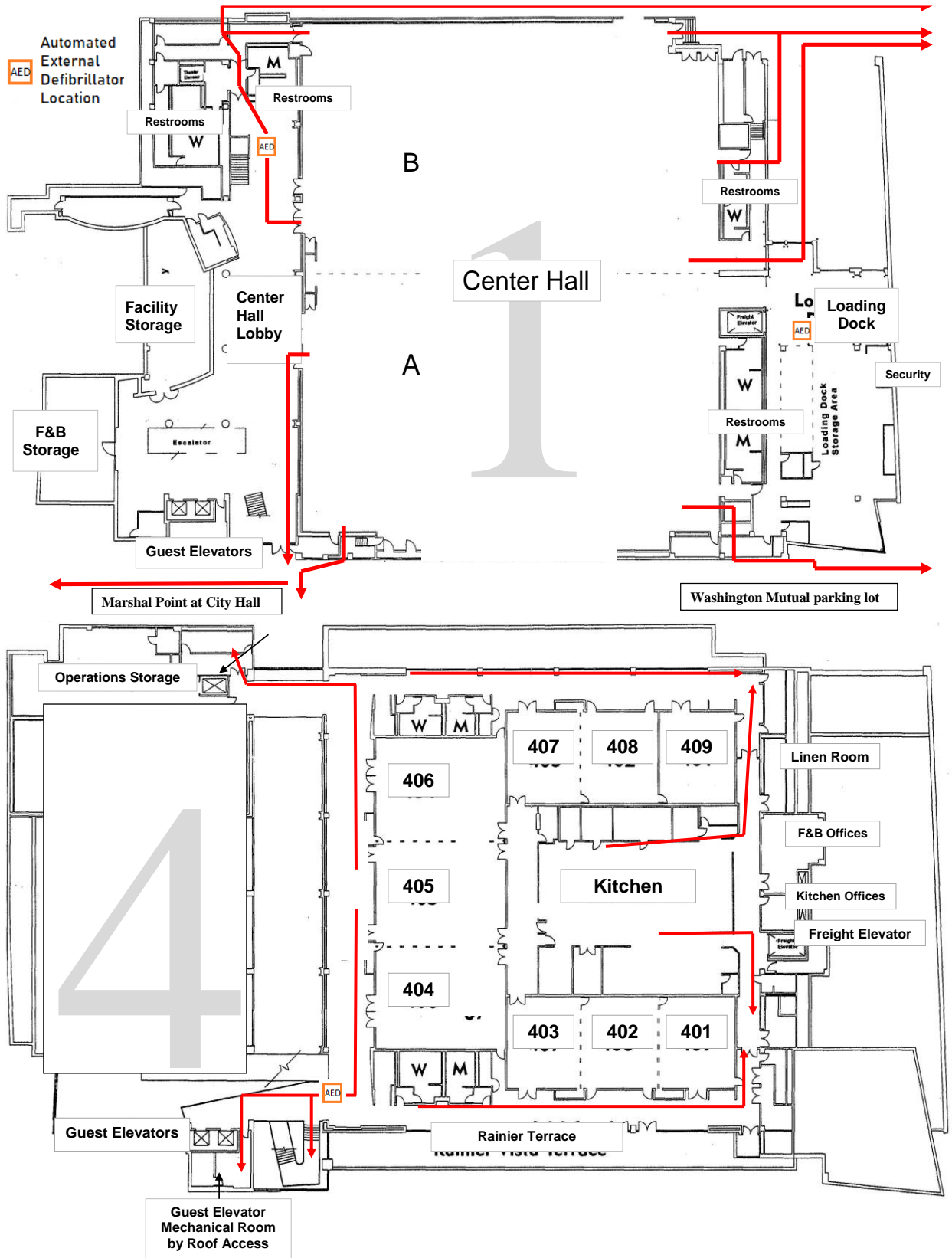
1. Meydenbauer Center is following the GBAC Star accreditation standards for cleaning and sanitation. The GBAC STAR Accreditation Program is performance-based and designed to help facilities establish a comprehensive system of cleaning, disinfection, and infectious disease prevention for their staff and their building. The program relies on GBAC's comprehensive training, which teaches the proper protocols, correct disinfection techniques, and cleaning best practices for biohazard situations like the novel coronavirus.
2. The following is a list of increased nightly cleaning standards related to Covid-19:
 - a. All surfaces and touch points (door handles, railings, elevators, tables, chairs, etc.) in meeting rooms, restrooms, pre-function spaces, conveyance systems, parking lobbies, are sanitized with an approved cleaner (Betco Quat-Stat5) that will neutralize Covid-19.
 - b. We are using Adenosine Triphosphate (ATP) testing to measure the effectiveness of our cleaning processes. Adenosine Triphosphate is the primary energy molecule that is present in all living organisms. This test method has a long track record of use in the food-production and medical industries where sterile or near-sterile conditions are required.
3. The following is a list of increased daily cleaning standards while the building is occupied related to Covid-19:
 - a. We will have staff dedicated to cleaning all surfaces and touch points in restrooms, pre-function spaces, conveyance systems, parking lobbies, are sanitized with an approved cleaner that will neutralize Covid-19 throughout the day.
 - b. Dedicated staff will clean and sanitize court rooms during the daily recess for lunch periods.
 - c. Dedicated staff will close restrooms twice per day to clean and sanitize all surfaces.
4. To improve indoor air quality, we have made the following upgrades to our HVAC systems:
 - a. We have upgraded the filters on our HVAC units throughout the building to the highest rated filter that does not decrease fresh air flow or diminish the functionality of the units. The building is served by a large hydronic loop consisting of large built up air handling units on the roof, make-up air units, and hydronic heat pumps throughout the building. The rooftop units will be provided *High Capacity* MERV 10 and *High Capacity* MERV 11 filters. The make-up air

units and hydronic heat pumps will be provided *High Capacity* MERV 8 filters. These filters will provide better filtration than a standard MERV 8 application and are the highest rated filter we are able to provide without causing harm to the existing equipment. These filters combined with the flush sequence(s) provided below will increase the overall air quality throughout the Meydenbauer Center.

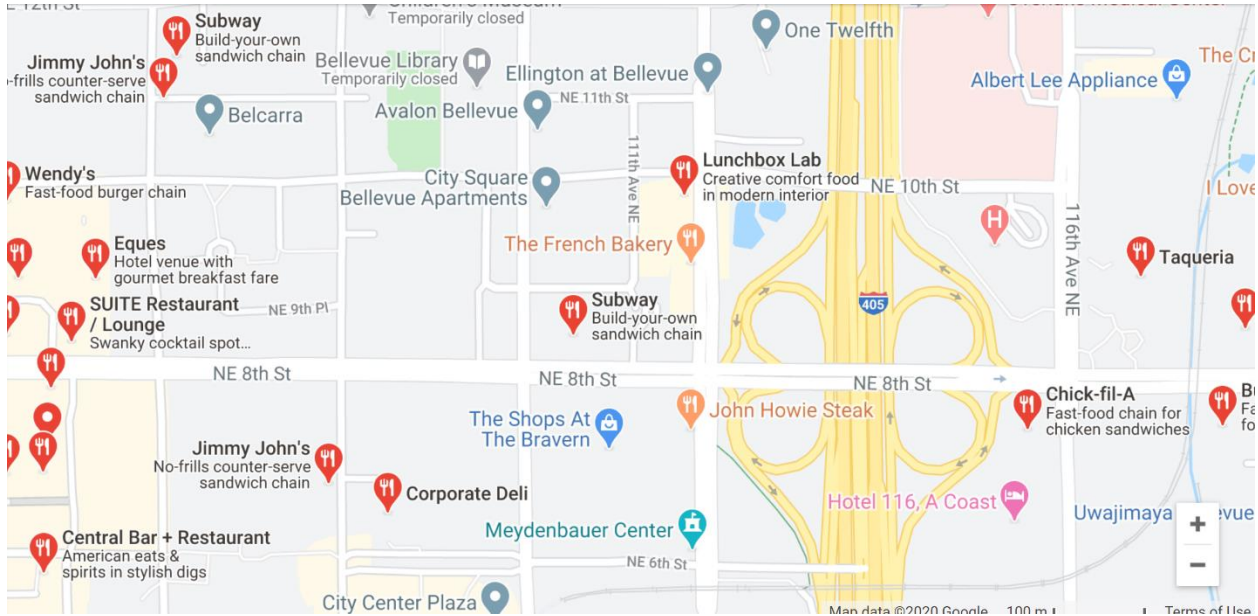
- b. We have reprogrammed our HVAC to increase outside air flow by 25 -50%. This will provide drastic improvement in circulation of fresh air to meeting rooms and lobby spaces. Our mechanical contractor, MacDonald-Miller, installed a program to “air flush” the meeting rooms, exhibit halls, lobby areas, and hallways during the building unoccupied hours. The program will turn on the air handler units, run the supply fans at maximum speed, open the air handlers’ outdoor air dampers to full open, and command the associated space dampers to maximum air flow settings. In this air flush mode, the air handler units will bring in the most outside air as the units are designed for and exhaust the equivalent amount of air – this is the most air changes that the units are capable of. The air flush mode will be run from 5pm to 8pm and from 5am to 7am daily. As a safety precaution to protect the equipment and the spaces, the air handler units’ outdoor air dampers can be less than full open based on the ambient air temperature, i.e., colder seasons.

MacDonald-Miller also installed an enhanced ventilation program for when the building is occupied. This program allows our building engineer to increase the amount of outdoor air based on the conditions of the building. The building engineer can select from three ventilation settings – Energy Efficient Mode, Partial Occupancy Mode, and Full Occupancy Mode. The Energy Efficient Mode is the original building HVAC sequence and the outdoor ventilation rate is kept to a minimum for maximum energy efficiency. The Partial Occupancy Mode will increase the outdoor ventilation by 25% and uses the space CO2 sensors (a reflection of space occupancy levels) to maintain the increased ventilation rate. The Full Occupancy Mode is similar to the Partial Occupancy Mode, but this increases the original ventilation rate by 50%. Full occupancy mode will run between 7am and 5pm daily.

- c. We have performed Legionnaire testing to our water tower to ensure the system is safe following a long-term shutdown.



Food Nearby



- Corporate Deli, 600 108th Ave. NE, 0.2 miles away
Open 10:30 a.m. to 1:30 p.m. corpdeli.com
- Chick-fil-A, 785 116th Ave. NE, 0.4 miles away
- Jimmy John's, 601 108th Ave. NE, 0.3 miles away
- Subway, 1102 NE 8th St., 0.2 miles away
- Chipotle/Evergreens, next door to each other at 10503 NE 4th St, 0.5 miles away
- Potbelly, 10650 NE 4th St., 0.4 miles away

