



King County

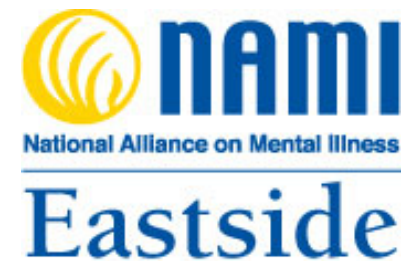
*Expanding Behavioral
Health Services in
Rural King County-
What we have learned*



Our Partners

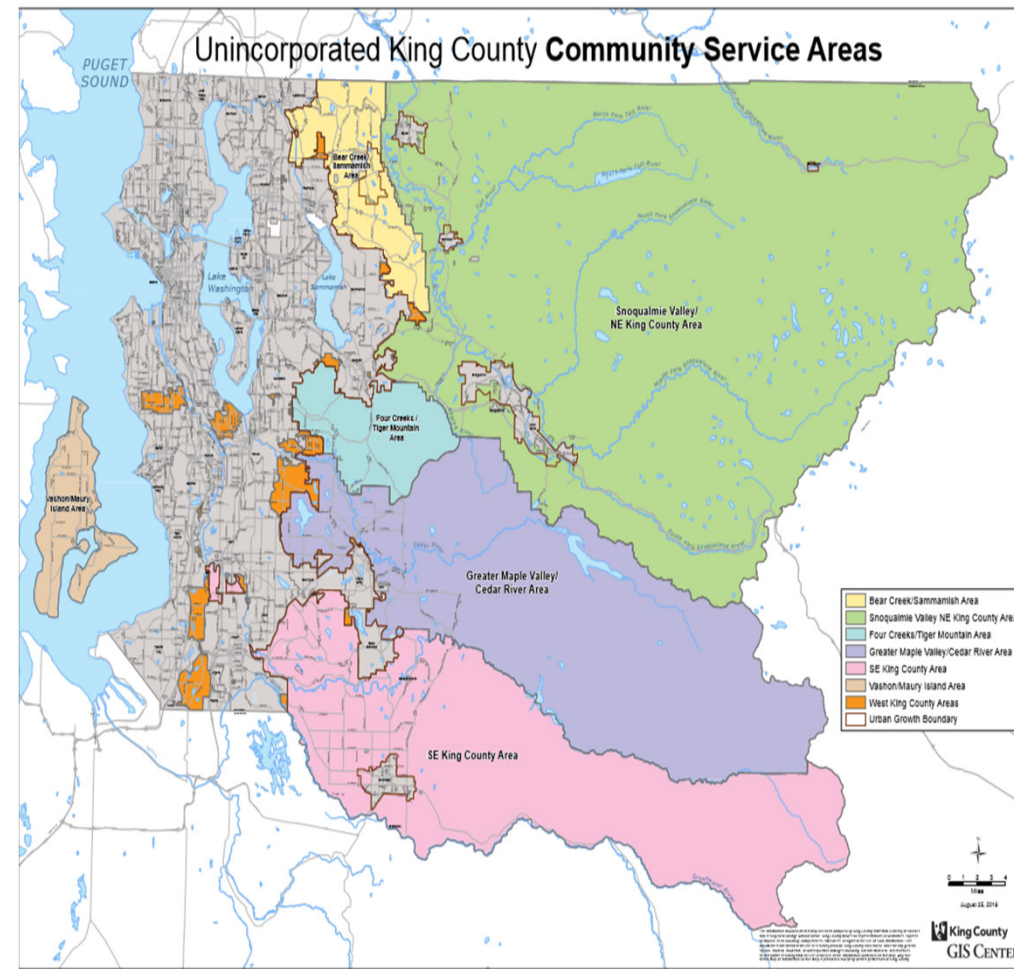


King County Peer Network



Expanding Behavioral Health Services in Rural King County

- DCHS/BHRD is seeking input from community members living and/or working in Rural areas of King County
- Community feedback will inform program priorities **should** federal COVID-19 funding become available



Consumer and Family Community Listening Session

1. Snoqualmie Valley/Northeast King County
2. Two on Vashon/Maury Island
3. Community-wide Session

Provider Listening Session

1. MIDD Behavioral Health in Rural King County 2020 Grantees
2. MIDD Behavioral Health in Rural King County 2021 Grantees
3. Two with the King County Integrated Care Network
4. King County Human Services Alliance-Unincorporated King County Workgroup
5. Key Informant Interview-Refugee services, youth specialized services and others

Behavioral Health in Rural King County Survey

Participants make take the survey via:

- ❖ Text
- ❖ Online

Survey is available in:

- ❖ Spanish
- ❖ Somali
- ❖ Traditional Chinese
- ❖ Simplified Chinese
- ❖ Russian
- ❖ Vietnamese
- ❖ Korean



Next Steps

- Analyze results of community engagement efforts and survey data
- Identify opportunities to replicate or expand behavioral health related programming
- Identify promising and best practices in providing behavioral health services in rural areas
- Develop a community informed funding proposal to present to council by May 31, 2021

Next Steps



King County

MIDD

Supporting behavioral
health and recovery

Suamhirs Piraino-Guzman

MIDD Community Partnerships Manager

spiraino@kingcounty.gov