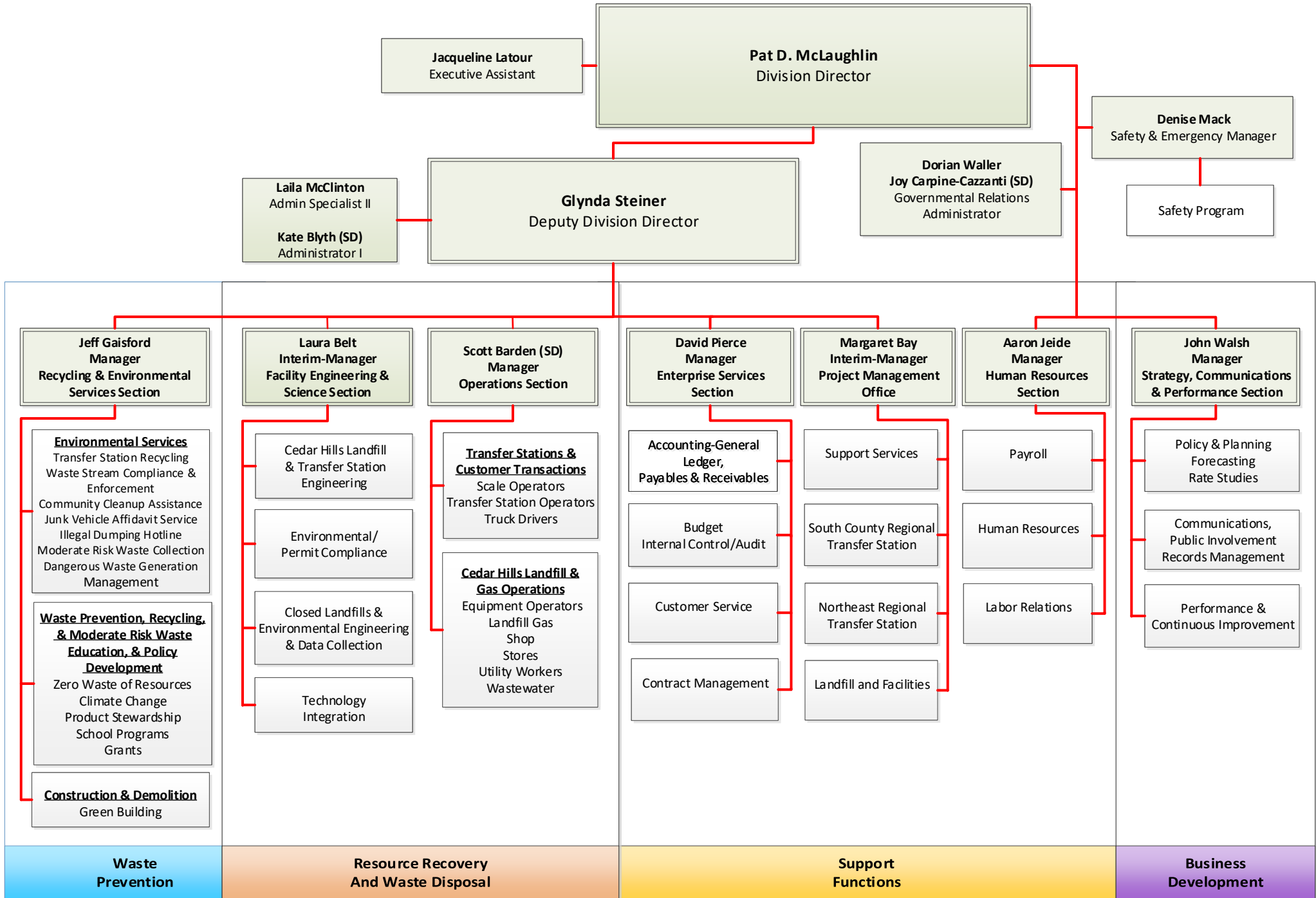


Solid Waste Division - Organizational Structure



Jacqueline Latour
Executive Assistant

Pat D. McLaughlin
Division Director

Denise Mack
Safety & Emergency Manager

Laila McClinton
Admin Specialist II

Kate Blyth (SD)
Administrator I

Glynda Steiner
Deputy Division Director

Dorian Waller
Joy Carpine-Cazzanti (SD)
Governmental Relations
Administrator

Safety Program

Jeff Gaisford
Manager
Recycling & Environmental
Services Section

Laura Belt
Interim-Manager
Facility Engineering &
Science Section

Scott Barden (SD)
Manager
Operations Section

David Pierce
Manager
Enterprise Services
Section

Margaret Bay
Interim-Manager
Project Management
Office

Aaron Jeide
Manager
Human Resources
Section

John Walsh
Manager
Strategy, Communications
& Performance Section

Environmental Services
Transfer Station Recycling
Waste Stream Compliance &
Enforcement
Community Cleanup Assistance
Junk Vehicle Affidavit Service
Illegal Dumping Hotline
Moderate Risk Waste Collection
Dangerous Waste Generation
Management

**Waste Prevention, Recycling,
& Moderate Risk Waste
Education, & Policy
Development**
Zero Waste of Resources
Climate Change
Product Stewardship
School Programs
Grants

Construction & Demolition
Green Building

**Cedar Hills Landfill
& Transfer Station
Engineering**

**Environmental/
Permit Compliance**

**Closed Landfills &
Environmental Engineering
& Data Collection**

**Technology
Integration**

**Transfer Stations &
Customer Transactions**
Scale Operators
Transfer Station Operators
Truck Drivers

**Cedar Hills Landfill &
Gas Operations**
Equipment Operators
Landfill Gas Shop
Stores
Utility Workers
Wastewater

**Accounting-General
Ledger,
Payables & Receivables**

**Budget
Internal Control/Audit**

Customer Service

Contract Management

Support Services

**South County Regional
Transfer Station**

**Northeast Regional
Transfer Station**

Landfill and Facilities

Payroll

Human Resources

Labor Relations

**Policy & Planning
Forecasting
Rate Studies**

**Communications,
Public Involvement
Records Management**

**Performance &
Continuous Improvement**

Waste Prevention

Resource Recovery
And Waste Disposal

Support Functions

Business Development